



**HAL**  
open science

## Development of large nebkhas along an accreting macrotidal coastline, Northern France

Marie-Hélène Ruz, Arnaud Héquette, Denis Marin

► **To cite this version:**

Marie-Hélène Ruz, Arnaud Héquette, Denis Marin. Development of large nebkhas along an accreting macrotidal coastline, Northern France. *Aeolian Research*, 2017, 24, pp.1 - 14. 10.1016/j.aeolia.2016.11.002 . hal-04266302

**HAL Id: hal-04266302**

**<https://hal.science/hal-04266302>**

Submitted on 24 Nov 2023

**HAL** is a multi-disciplinary open access archive for the deposit and dissemination of scientific research documents, whether they are published or not. The documents may come from teaching and research institutions in France or abroad, or from public or private research centers.

L'archive ouverte pluridisciplinaire **HAL**, est destinée au dépôt et à la diffusion de documents scientifiques de niveau recherche, publiés ou non, émanant des établissements d'enseignement et de recherche français ou étrangers, des laboratoires publics ou privés.

## **Development of large nebkhas along an accreting macrotidal coastline, Northern France**

Marie-Hélène Ruz<sup>1</sup>, Arnaud Héquette<sup>1</sup>, Denis Marin<sup>1</sup>

<sup>1</sup>Laboratoire d'Océanologie et de Géosciences, UMR CNRS 8187, Université du Littoral Côte d'Opale, 32 Avenue Foch, 62930 Wimereux, France

Corresponding author: Marie-Hélène Ruz; e-mail: [ruz@univ-littoral.fr](mailto:ruz@univ-littoral.fr)

**Highlights:**

- We document the formation and evolution of huge isolated nebkhas on an upper beach.
- Such large nebkhas have not been reported yet in beach environments.
- The nebkhas do not limit the development of an incipient foredune zone landward.
- They are likely restricted to macrotidal foreshores with abundant sediment supply.

**Abstract :**

Very large isolated nebkhas, up to 4 m high and 14 m wide, have developed on the upper beach of a several hundred meters wide foreshore on the French coast of the Dover Strait. This macrotidal shoreline is characterized by abundant sediment supply from the shoreface related to the onshore welding of a nearshore sand bank. Continuing beach accretion provided the conditions for rapid seaward development of incipient foredunes. The nebkhas developed on the uppermost beach, slightly above the highest astronomical tide limit, forming hemispheric to oval-shaped mounds only reached by spring tides and/or storm surges. They do not form an incipient foredune zone, but mounds that grew vertically and remained in the form of isolated huge nebkhas disconnected from the incipient foredune zone by a swale. The nebkhas consist of scattered landforms that do not impede aeolian accretion landward in the incipient foredune zone where the maximum accretion rates were recorded. The distribution of such large coastal nebkhas is probably limited in beach environments since the descriptions of similar examples of aeolian coastal landforms are virtually absent in the scientific literature, suggesting that they are presumably restricted to low gradient macrotidal beaches associated with an excess of sand supply.

**Keywords:** nebkhas, incipient foredunes, accreting coastline.

## 1. Introduction

Sandy beaches offer an exposed source of sediment and so most sandy beaches are fringed by some form of sand dune formed by sand transported by wind and deposited landward of the beach (Davidson-Arnott, 2010; Martinez and Psuty, 2004). Dunes of various size and morphology can be found depending on sediment supply, dominant wind velocity and direction, moisture and vegetation cover, but also on the geomorphology of the nearshore and intertidal beach (Houser and Ellis, 2013). Immediately landward of the active beach, incipient foredunes, which are also called embryo dunes by some authors (e.g., Davidson-Arnott, 2010), commonly develop, consisting of low dunes forming by aeolian sand accumulation in areas covered by pioneer plant communities (Hesp, 2002, 2012). Their formation is due to the presence of some roughness elements on the backshore that reduce wind flow velocity, resulting in sediment deposition. On beaches, the debris that accumulate at the drift line efficiently increase surface roughness, favouring the deposition of aeolian sand, but the formation of incipient dunes essentially takes place above the high tide limit where vegetation is the most common roughness element that initiates their formation. According to Hesp (1984, 1989), their morphological development depends on plant species, density, height and cover, as well as wind speed, rates of sand transport, and beach progradation rates. In their early stage of development, incipient foredunes may form nebkhas, often with attendant shadow dunes (Hesp, 1981). Nebkhas (also called nabkhas, coppice dunes, dune mounds) form isolated hummocks, and are common features in many aeolian settings (Melton, 1940; Hesp, 2011). They are sometimes considered as a distinct dune type (Pye and Tsoar, 1990; Nickling and Wolfe, 1994; Lancaster, 1995; Hesp and McLachlan, 2000). They usually develop as a result of the deposition of wind-driven sediments around shrubs in arid and semi-arid regions (Cooke et al., 1993). Nebkhas differ from shadow dunes that develop as a result of sediment deposition in the lee of an obstacle (Bagnold, 1941; Hesp, 1981). Nebkhas are also very common features along sandy coastlines (Hesp, 2011). They are found in arid and semi-arid coastal environments (Khalaf et al. 1995; Langford,

2000; el Bana et al, 2007; Ardon et al., 2009; Khalaf and Al-Awadhi, 2012; Hernandez-Cordero et al., 2015) as well as in temperate (Hesp and Walker, 2013), cool temperate humid (Mountney and Russel, 2006) and cold environments (Ruz and Hesp, 2014). They can develop at various locations, from the upper beach to low backbarrier areas (Carter et al., 1992), although nebkhas can also form in interdune areas or in the slacks of active dunes (Hesp and McLachlan, 2000). However, they usually develop on the backshore on swash-aligned drift material or on storm debris lines, through alongshore growth of pioneer plant seedlings and/or by rhizome growth, forming a quasi-continuous line of low (50-100 cm high) vegetated mounds (Hesp, 1989).

The shape and size of coastal nebkhas is variable. Along the arid coastal plain of Kuwait for example, the nebkha height varies between 0.4 to 1.2 m on average (Khalaf and Al-Awadhi, 2012). Nebkhas developing in temperate environments are usually forming discrete hummocks that are typically 0.2 - 0.5 m to 1 to 2 m in height (Davidson-Arnott, 2010; Montreuil et al. 2013). In cool humid coastal environments, as along the southern coastline of Iceland, an extensive nebkha field developed, with individual nebkha up to 2 m high (Mountley and Russel, 2006). Small nebkhas, 0.5 to 1 m high are also found along arctic coastlines (Ruz and Hesp, 2014).

Incipient foredunes can be ephemeral features that can be partly or completely eroded during storm events, especially when they develop near the high tide limit. They may also withstand storms if they are high enough above high spring tide limit where they represent the initial stage of foredune development. Foredunes (incipient and established) are dependent aeolian landforms, linked to beach and nearshore processes and are sometimes considered as the only distinctive coastal dune forms (Bauer and Sherman, 1999), where real dune formation can begin (Arens, 1996). According to Hesp (2002), all other factors being equal, large foredunes are more frequent on dissipative beaches, which are characterized by wide foreshore and maximum potential sediment supply. Macrotidal sandy beaches, with a wide wind-exposed foreshore at low tide, are also thought to represent optimal conditions for the development of

coastal dunes (King, 1972; Carter, 1988). Well-developed coastal foredunes are thus common along low-gradient macrotidal beaches (Battiau-Queney et al., 2001; Anthony et al., 2006, 2009; Pye and Blott, 2008; Montreuil et al., 2013). This is particularly the case on the northern coast of France where nebkha of substantial size have developed seaward of the foredune along a prograding macrotidal foreshore of the southern Dover Strait. In this paper, we report on the formation and evolution of isolated huge nebkhas that appear to be uncommon for seawardmost dunes and we try to determine the conditions leading to their development.

## **2. Study area**

The French North Sea coastline is a 55 km long almost continuous sand beach barrier extending from the Cap Blanc Nez chalk cliff to the Belgium border, facing the eastern English Channel and the southern North Sea (Figure 1). The coast essentially consists of wide and gently sloping sandy beaches with multiple intertidal bars (Anthony et al., 2005; Reichmüth and Anthony, 2007) backed by coastal dunes that commonly exceed 10 m high and reach up to 25 m in places (Battiau-Queney et al., 2001; Ruz et al., 2005). The dunes merge with the French coastal plain that extends 10 to 20 km landward. The coastal plain is a low-lying reclaimed land with mean elevation of 2 m above mean sea level. Based on historical records (old topographic and hydrographic maps), this area experienced shoreline progradation since at least the 14<sup>th</sup> century (Briquet, 1930). As the shoreline prograded seaward, dikes were erected in order to gain new farm lands. Nowadays, coastal dunes and dikes are the only protection against marine flooding.

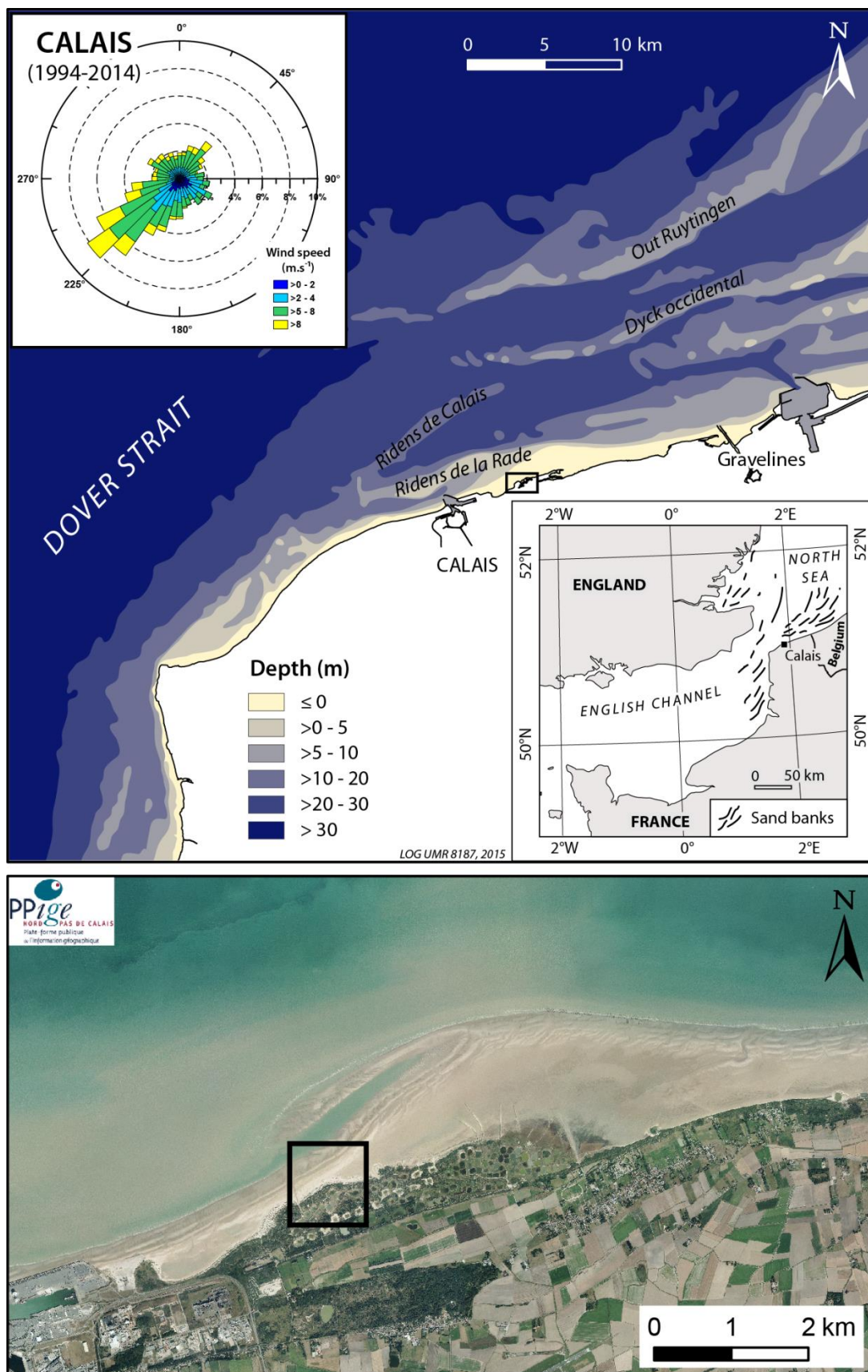


Figure 1. Location map of the study area. The inset on the aerial photograph shows the location of the investigated coastal dunes. Wind rose diagram based on three-hourly mean wind speed and direction from the Météo-France station in Calais.



The study area consists of a 350 to 500 m wide beach at low tide, east of Calais (Figure 1), comprising a series of intertidal bars and an upper beach platform bounded landward by coastal dunes. The coastal dunes bound a salt marsh that has been largely modified by humans, with the excavation of numerous hunting ponds (Figure 1). Eastward, the intertidal zone forms a protruding and extensive sandflat. The beach and sandflat exhibit large variability in surface sediment size, depending on morphology, elevation and exposure to waves. The intertidal bars and troughs are composed of well-sorted fine to medium sand (mean grain size: 0.2 to 0.33 mm), while the upper beach sandflat mainly consists of fine sand (mean grain size: 0.23 mm). The coastal dunes in the backshore are composed of fine to medium sand (mean grain size: 0.17 to 0.31 mm).

Offshore, tidal sand banks are widespread across the nearshore zone and the inner shelf where they form extensive linear sand bodies sub-parallel to the shoreline (Augris et al., 1990; Beck et al., 1991). Nearshore tidal sand banks have been migrating alongshore and/or onshore for centuries. Immediately east of Calais, a sand bank called “banc Braseux”, parallel to the shoreline, merged to the shore during the 16<sup>th</sup> century (Briquet, 1930), which resulted in the formation of a convex-shaped sand platform protruding seaward (Figure 1). During the 19<sup>th</sup> and 20<sup>th</sup> centuries, the Ridens de la Rade, a shallow 13 km long and 1.4 km wide sand bank (Figure 1), migrated alongshore and onshore and became eventually attached to the shore (Augris and Clabaut, 2001). Comparison of bathymetric charts revealed that this shore-attached sand bank grew up to about  $100 \times 10^6 \text{ m}^3$  during the 20<sup>th</sup> century (Héquette and Aernouts, 2010), forming an extensive sub-tidal sand source for the development of the intertidal sandflat and coastal dunes in the backshore (Anthony, 2013; Anthony et al., 2006), therefore favouring shoreline progradation.

Except for episodic storm events, the coast is exposed to low-energy waves. The dominant winds are from west to southwest, with a secondary wind direction from north to northeast (Figure 1). Winds are usually moderate, with more than 45 % of winds having a mean velocity

of less than 5 m/s; strongest winds ( $\geq 16$  m/s) occur only 0.06 % of the time. Associated with this wind regime, waves predominantly come from the English Channel-with a direction from southwest to west, followed by waves generated in the North Sea from the north to northeast. Modal significant wave height is less than 1 m with wave periods typically ranging from 4 to 8 s, but maximum wave height may episodically exceed 5 m with periods of 9 to 10 s during major storms (<http://candhis.cetmef.developpement-durable.gouv.fr/campagne/>). Wave heights are significantly lower at the coast, due to significant shoaling and energy dissipation over the offshore sand banks, resulting in wave heights that hardly exceed 1 m in the intertidal zone even during storms (Sedrati and Anthony, 2007; Héquette and Cartier, 2016).

The tidal regime in the region is semi-diurnal and is characterized by a large tidal range that increases from the North Sea to the English Channel, the tidal amplitude reaching 6.5 m at Calais during spring tides. Due to this large tidal range and current funnelling through the Dover Strait, tidal currents are powerful along the northern coast of France, reaching near-surface velocities of  $1.5 \text{ ms}^{-1}$  during flood and  $1.35 \text{ m s}^{-1}$  during ebb in the narrow channels of the nearshore sand banks (Augris et al., 1990). Tidal currents flow almost parallel to the shoreline, with flood currents directed to the east-northeast and ebb currents to the west-southwest. Because the dominant waves come from the southwest and the tidal currents asymmetry is flood-dominated, net sediment transport on the shoreface and on the foreshore is directed to the east-northeast (Héquette et al., 2008; Cartier and Héquette, 2015).

### **3. Methodology**

The evolution of coastal dunes was based on the comparison of orthorectified vertical aerial photographs (years 1963, 1983, 2000 and 2012) and georeferenced and rectified aerial photographs (years 1938, 1949, 1957, 1961, 1965, 1969, 1970, 1972, 1975, 1977, 1980, 1982, 1986, 1988, 1989, 1992, 1993, 1997, 2005 and 2009), which were used for carrying out detailed

geomorphological evolution of coastal dunes from stereo-pairs of aerial photographs. The error range of the orthorectified aerial photographs is  $\pm 2$  m.

High-resolution topographic data of the foreshore, upper beach and coastal dunes were obtained from airborne LiDAR surveys realised in 2011 (03/21/2011) and 2014 (01/18/2014). The data were obtained with a Leica ALS60 LiDAR system that acquired topographic data with a density of 1.2 to 1.4 points/m<sup>2</sup>. The LiDAR operating system was combined with real time kinematic DGPS and inertial motion unit, ensuring a planimetric precision of less than 0.5 m. The position accuracy of the LiDAR data points ranged from  $\pm 0.10$  to 0.17 m with a vertical accuracy less than  $\pm 0.10$  m as verified with several ground control points using a very high resolution differential GPS (Leica TPS Syst1200). However, vertical error can easily increase to  $\pm 0.25$  m or even more in areas covered by dense vegetation (Saye et al., 2005). The LiDAR topographic data were therefore filtered to remove vegetation and other objects above ground surface. Digital Terrain Models (DTM) were created from the filtered data using Golden Software Surfer™. The different DTMs were then used to calculate volume changes between each LiDAR survey. The DTMs were obtained using linear Delaunay triangulation interpolation, which resulted in a grid with a 1 m resolution. According to previous work on the spatial characterization and volume calculation of coastal dunes using LiDAR topographic data, a grid cell resolution of 1 m<sup>2</sup> provides reliable representation of topography and accurate volumetric measurements in coastal dunes (Woolard and Colby, 2002).

Observed and predicted hourly water levels at Calais were obtained from the SHOM (*Service Hydrographique et Océanographique de la Marine*). Water level data were analysed to determine the periods of time during which high water levels could reach the toe of the investigated coastal dunes. Tri-hourly and hourly wind data were obtained from Météo-France for the period 1994-1999 (tri-hourly data) and 2000-2014 (hourly data) to assess efficient winds for potential aeolian sand transport.

## **4. Results**

### **4.1. Development of sandy islets and shoreline advance**

On the 1938, 1949 and 1957 aerial photos, three sandy “islets”, 190 m to 360 m long and 150 m to 210 m wide, detached from the main shore, are clearly visible on the upper beach platform (Figure 2). In 1938, these islets were poorly vegetated and were separated from each other by channels, and from the main shoreline by a wet upper beach 110 m wide, indicating tidal incursion around and past them at high tide. The main shoreline consisted of low vegetated coastal dunes, with a hummocky topography, and to landwards, reclaimed salt marshes backed against a dike erected in 1773 (Taaf dike). In 1957, the sandy islets were still disconnected, but appeared more vegetated and partially covered by low coastal dunes (Figure 2). According to Briquet (1930), coastal dunes in this area were not continuous, but formed an archipelago of small sandy islands separated by narrow channels and spaced one hundred metres or more apart (Briquet, 1930, p. 298). In his description of the shoreline in ca. 1920-1925, Briquet (1930) called these coastal dunes, developed at the uppermost tide level, “insular dunes” as they formed isolated features, detached from the main foredune and surrounded by the sea during spring tides. It is likely that the three islets visible on the 1938 aerial photographs correspond to these “insular dunes” described by Briquet. In 1938, only three large sandy islets and four small ones were present along this section of the coastline.

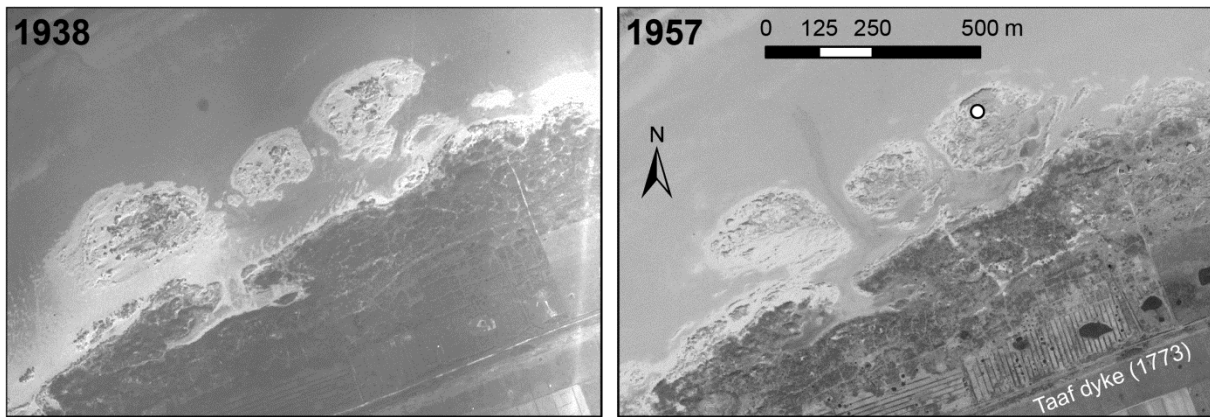


Figure 2. 1938 and 1957 aerial photographs showing the evolution of sandy islets on the upper beach east of Calais. The white circle corresponds to the location of a Second World War blockhouse.

Between 1963 and 1993, these islets were progressively integrated to the main shore (Figure 3). In 1963, they were separated by channels, but by 1972, the two eastern ones were clustered together, and only a pathway to the beach remained (Figure 3). The density of vegetation cover, likely marram grass and shrubs, increased during this time period. Dune morphology was chaotic, but hemispheric mounds are discernible on the 1963 aerial photo, especially on the western islet. Behind, hunting ponds were dredged and connected to the sea by a channel which was artificially excavated in order to maintain seawater incursion in the ponds. By 1986, the connected sandy islets formed the new shoreline (Figure 3), resulting in a shoreline advance of 320 m since 1938. Incipient coastal dunes progressively developed on the upper beach and the “older” dunes were covered by shrubs. This was followed by the development of an established foredune visible on the 1993 aerial photo. The 1993 aerial photographs also shows that a new incipient foredune, with a hummocky topography, developed seaward of the established foredune, resulting in continuing shoreline progradation.

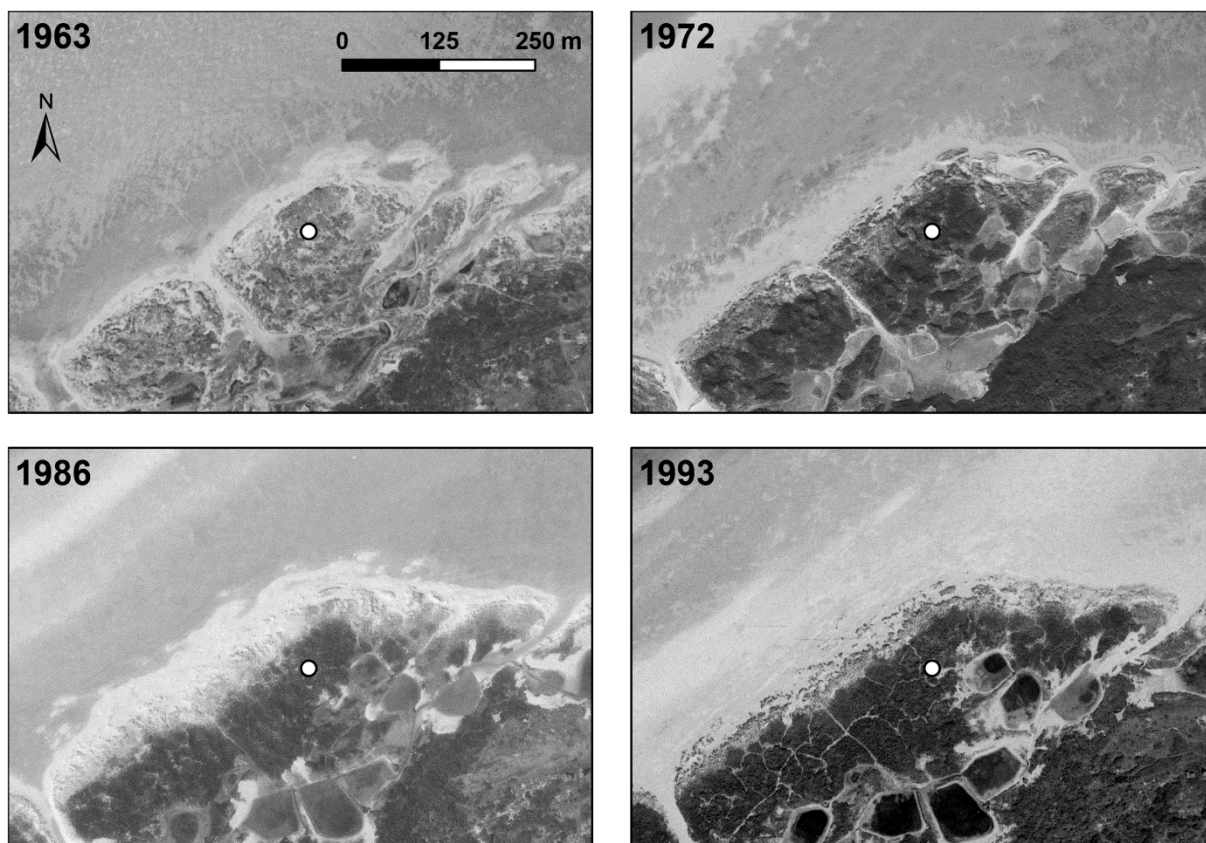


Figure 3. Series of aerial photographs from 1963 to 1993 showing the progressive merging of the sandy islets that resulted in shoreline advance. The white circle corresponds to the location of the Second World War blockhouse shown on figure 2.

#### 4.2. Formation of large isolated nebkhas

By 1986, a few discrete, scattered, bare, circular sandy hummocks, developed on the upper beach, 45 m to 50 m seaward of the incipient foredunes (Figure 3). By 1993, most of them had disappeared, but in 1997, a dozen of roughly circular sand patches, 13 to 40 m long and 10 to 28 m wide were visible (Figure 4). They were separated from the incipient foredune zone by a bare sand area 35 to 65 m wide. By 2000, a series of nascent nebkhas had developed. To the east, two lines of nebkhas developed. A first line of 5 nebkhas was close to the incipient foredune zone, while the seaward most nebkhas were located 30 to 50 m from the incipient foredune zone. In 2001 the nebkhas were partially vegetated and most of them were 1 to 1.5 m high, the highest ones reaching an elevation up to 2 m (Tékin, 2004). By 2005, they formed well developed isolated nebkhas, still disconnected from the incipient foredune zone (Figure

4). On the aerial photo of 2005 (Figure 4), the wet sand surface between the nebkhas and the incipient foredune zone indicates they were episodically surrounded by water during high tides.

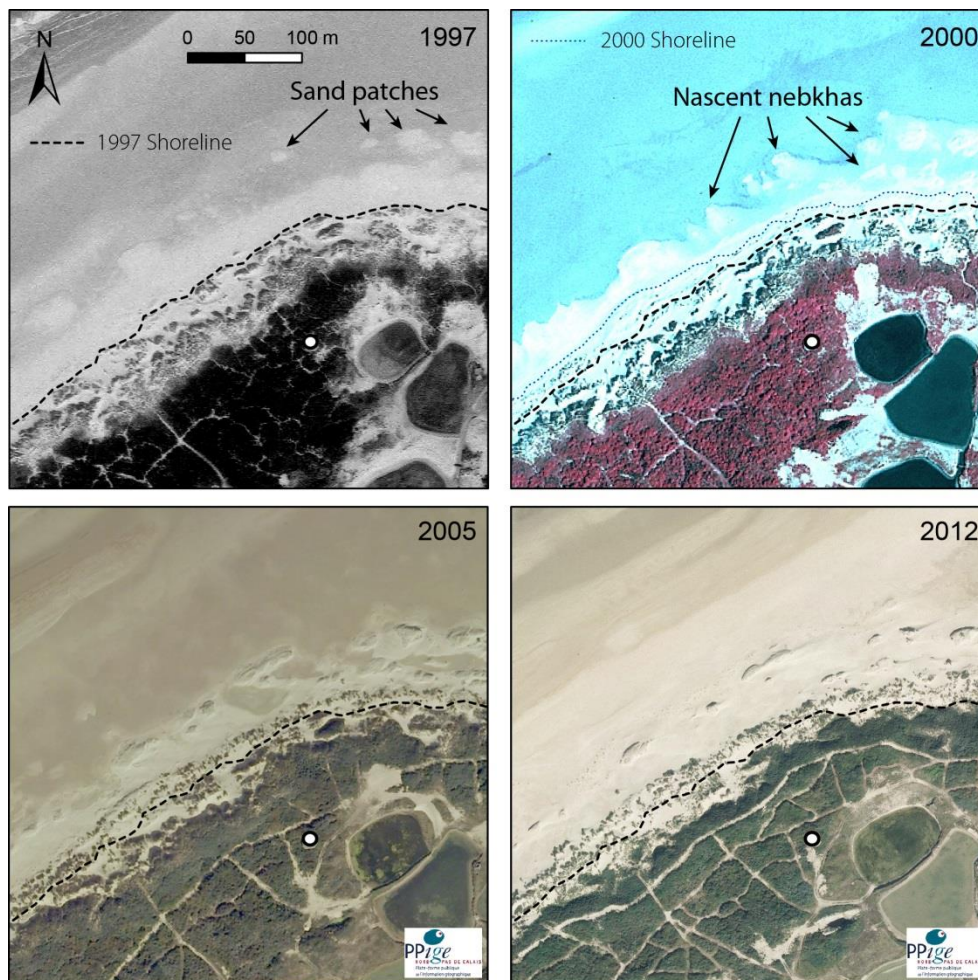


Figure 4. Series of aerial photographs from 1997 to 2012 showing the development of large nebkhas on the upper beach and seaward expansion of the incipient foredune zone. Note the inland position of the Second World War blockhouse shown on figures 2 and 3 (white circle), evidencing significant seaward shoreline displacement since the 1950s.

While the nebkhas formed, an incipient foredune zone developed at the toe of the established foredune (Figure 4). In 1997, the incipient foredune was characterized by a hummocky topography, with scattered well vegetated hummocks. Between 1997 and 2000, the incipient foredune zone developed seaward, due to significant sand accumulation resulting in a shoreline advance of 20 m on average (Figure 4). Incipient dunes grew in size and linked up and by 2005 they were forming a shore-parallel partially vegetated foredune zone. Only very few changes occurred between 2005 and 2012 and the shoreline remained fairly stable. During

the whole period, between 1997 and 2012, the interdune area between the nebkhas and the incipient foredune zone remained devoid of vegetation. The analysis of aerial photographs revealed that the incipient foredune zone developed seaward at the expense of the swale between the nebkhas and the advancing incipient foredunes (Figure 4).

Presently, an established foredune, 10 to 15.5 m high, is anchored by shrubs (*Hippophae rhamnoides*, common sea-buckthorn) and is fronted by a hummocky incipient foredune zone up to 10 m above French topographic datum (IGN69), partially colonized by *Ammophila arenaria*. Both established and incipient foredunes are lower in the eastern part of the studied area. Eight very large nebkhas, parallel to the incipient foredune, are located 20 to 40 m seaward of the main shoreline (seaward limit of the incipient foredune zone). Their seaward toe is slightly above the highest astronomical tide elevation (Figure 5).

Table 1. Morphological parameters of the nebkhas. The location of each nebkha is shown on Figure 5. The main shoreline corresponds to the seaward limit of the incipient foredune zone.

Nebkha N°	Lenght (m)	Width (m)	Height (m)	Distance from main shoreline (m)
1	14	8	1.9	19.5
2	9.7	8.7	1.8	19.4
3	32.2	12	3.5	24
4	13.8	11	2.6	28
5	52.5	10	4	40
6	15.3	9.5	1.8	36
7	17.5	9	3.2	32
8	31.5	14.5	3.6	22



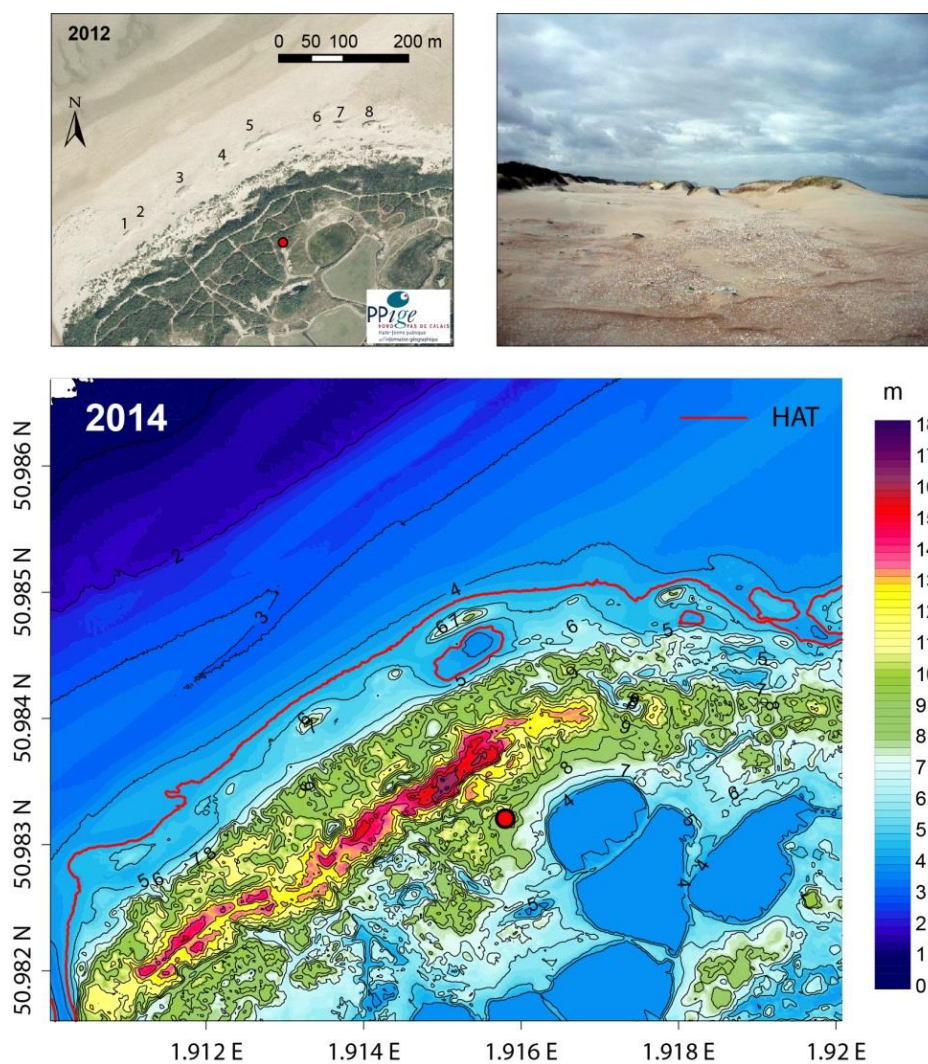


Figure 5. Vertical aerial photograph (upper left), ground photograph (upper right), and Digital Terrain Model of the study area based on airborne LiDAR topographic data (bottom map) showing large nebkhas on the upper beach. The red circle corresponds to the location of the Second World War blockhouse shown on figures 2, 3 and 4.

Most of them have a height of 2 to 3 m (Tabl. 1) and are located at the landward limit of a 20 m to 30 m wide, low gradient, upper beach (slope of 1.0 to 1.3% between the MHS and the HAT level). The largest nebkha is 4 m high, 52.5 m long and 10 m wide. This particularly long nebkha results from the coalescence of two individual nebkhas. The variation in the size and the shape of the nebkhas over a short distance may be related to the time of initiation of each individual nebkha, but also to their coalescence during their subsequent development. These scattered nebkhas, aligned along the uppermost tidal level on the very upper beach, form hemispheric to oval-shaped mounds only reached by spring tides and/or storm surges (Figure

6). They do not form an incipient foredune zone, but mounds that grew vertically and have remained in the form of isolated huge nebkhas.

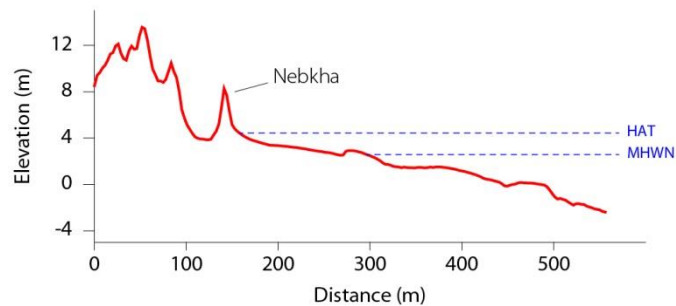


Figure 6. Typical cross-shore profile of the beach and coastal dunes east of Calais (based on LiDAR topographic data acquired in January 2014) and photograph showing the presence of large nebkha on the upper beach.

On the upper beach, some poorly developed nebkhas are still forming today, which are commonly observed in areas of extensive shell pavements (Figure 7). Such shell pavements, covering the beach, limit sediment transport (Carter, 1976) and it is also difficult for plants to establish in dense shell lags (Davidson-Arnott and Law, 1990). Surface shell lags also likely limit the development of pioneer species all along the wrack line. Wind driven fine sand preferentially accumulates around clumps of vegetation (*Elymus farctus*), resulting in the formation of circular low-elevated incipient nebkhas (Figure 7). *Elymus farctus* (sand couch-grass) is a perennial pioneer, salt-tolerant, strand species. It is a rhizomatous plant spreading outwards by means of long and wiry underground stems. By putting up vertical sympodial

branches as a result of repeated tillering, *Elymus farctus* can keep pace with rapid though modest accumulation of sand (Nicholson, 1952). Once the plant starts catching sand, its root system begins to develop a network of deep roots with side branches. To prevent being buried by the sand, the plant is continually growing. This plant, with culms 20-60 cm, can germinate (either by seedling or from rhizome fragments) in accumulations of organic tidal litter or directly on the beach and can survive seawater inundation. When *Elymus farctus* germinates, windblown sand preferentially accumulates around clumps of vegetation. A discrete, semi-circular, convex dome is typically formed (Figure 7). Then, they progressively grow up and enlarge, forming nebkhas. Although most of the nebkhas are exclusively colonised by *Elymus farctus*, some well-developed ones have clumps of *Ammophila arenaria* on their crest.



Figure 7. Low dune surrounded by shell pavements on the upper beach east of Calais.

Located near the highest water level limit, they are episodically surrounded by seawater during wind-induced and/or barometric surges. When developing, the seaward most ones can be episodically eroded during storm events. Nebkhas are mainly parallel to southwesterly dominant winds and most of them have an elongated shape. However, depending on wind direction, nebkha morphology can change (Figure 8). Under strong dominant winds from the southwest, parallel to the beach, they have a tail parallel to the prevailing wind direction (240°) (Figure 8A). Under direct onshore winds, their stoss side can be eroded and sand preferentially

accumulates on their landward side (Figure 8B). Most of the nebkhas have steep flanks, inclined up to 50° and can be steepened on their seaward side in response to episodic wave scarping.

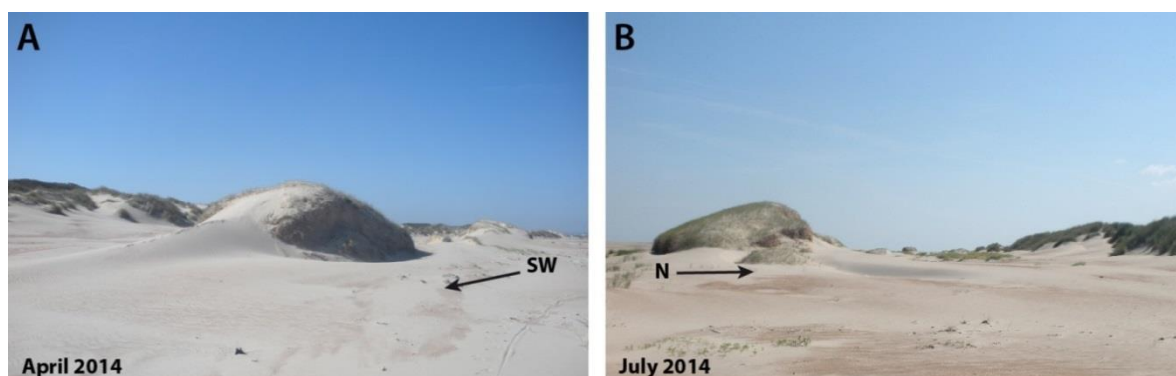


Figure 8. Sand accumulation behind nebkhas under (A) longshore and (B) onshore winds.

#### **4.3. The influence of hydro-meteorological conditions on the evolution of nebkhas and incipient foredune zone**

The analysis of hourly uppermost water levels recorded in Calais harbor (Figure 9) reveals that between 1993 and 2012, uppermost water levels reaching the nebkhas occurred only 15 times, less than once a year on average. The very low occurrence of extreme water levels between 1996 and 2000 may have also favored nebkhas and incipient foredune zone development. In 2013, however, 9 very high water levels were recorded, during two major storm events. A first storm, the Godehart storm, from 3 to 6 November 2013, was characterized by strong southwest winds, with instantaneous wind speed exceeding 21 m/s. A surge of 0.63 m at high tide resulted in water levels up to 8.08 m above HD (4.54 m IGN 69) on November 3, 2013.

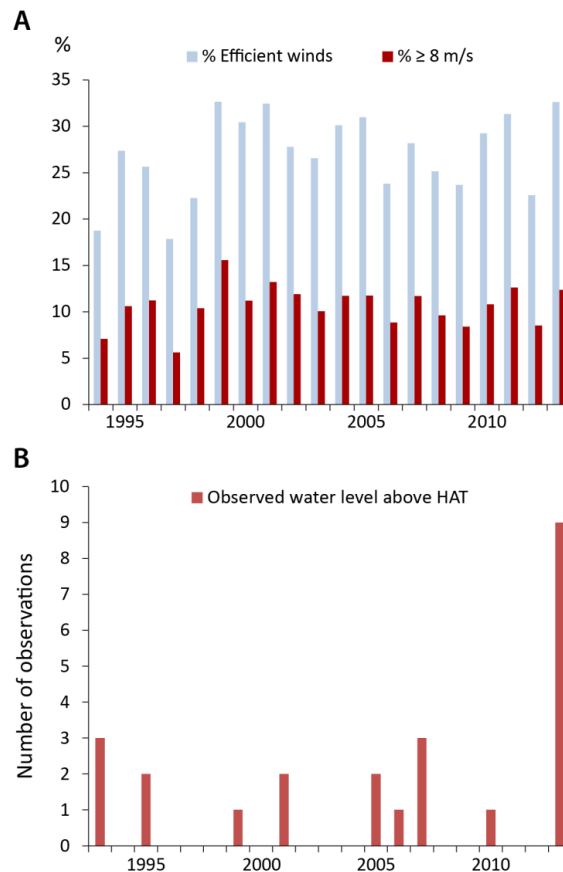


Figure 9. Annual frequency of (A) efficient winds for Aeolian transport (see text for explanation) and winds with velocities  $\geq 8$  m/s (data: *Météo-France*), and (B) of water levels above highest astronomical tide (HAT) measured at Calais tide gauge (data: *Service Hydrographique et Océanographique de la Marine*).

A second storm, Xaver storm, struck northern Europe in December 2013 (Masselink et al., 2016). Strong northwest winds, low atmospheric pressure, combined with a spring tide, generated a significant storm surge that has been responsible for erosion all along the coastline of the region. At Calais, on December 5<sup>th</sup> and 6<sup>th</sup>, southwestern to northwestern mean hourly winds above 8 m/s blew during more than 24 consecutive hours. The maximum instantaneous recorded wind speed was 24.4 m/s, while the maximum mean hourly recorded wind speed was 16 m/s. In this area, where wind speed rarely exceeds this value (Chaverot et al., 2008), it has been shown that wind duration is a major factor inducing storm surges. Moderate winds, 8 to 10 m/s, blowing more than 24 hours and combined with a high tide, can induce significant erosion along this coastline (Ruz et al., 2009). In Calais harbour, on December 6<sup>th</sup> 2013, the maximum recorded water level reached about 8.68 m above hydrographic datum (Daubord,

2014) or 5.22 m relative to topographic datum (IGN69). This observed water level is greater than the numerical value of extreme high water levels calculated for a 100-year return period which is 5.04 m (IGN69).

The recent morphological evolution of the nebkhas was strongly influenced by this latter storm event. The LiDAR topographic data collected on January 18<sup>th</sup> 2014 show that most of the nebkhas underwent erosion during the December 2013 storm event (Figure 10). During the storm surge, the maximum water levels reached the swale, isolating some nebkhas and eroding their landward slope. This happened only in areas where the swale depth was well under the storm surge level (Profile 4 and 5, Figure 10). The width of the seaward most nebkhas was reduced; however their height remained stable or increased due to vertical accretion. Two nebkhas were severely or completely eroded during this event (see Profile 1, Figure 10). The swale that formed between the nebkhas and the incipient foredune zone underwent both erosion and accumulation between 2011 and 2014 (Figure 11). Erosion mainly affected slightly lower areas located landward of the nebkhas (Figure 10), which were reached by the storm surge of December 2013. The incipient foredune zone was not reached by this storm surge and accumulation prevailed, with sand accretion resulting in up to 1.2 m of accumulation between 2011 and 2014 (Figure 10). Meanwhile, the established foredune remained fairly stable.



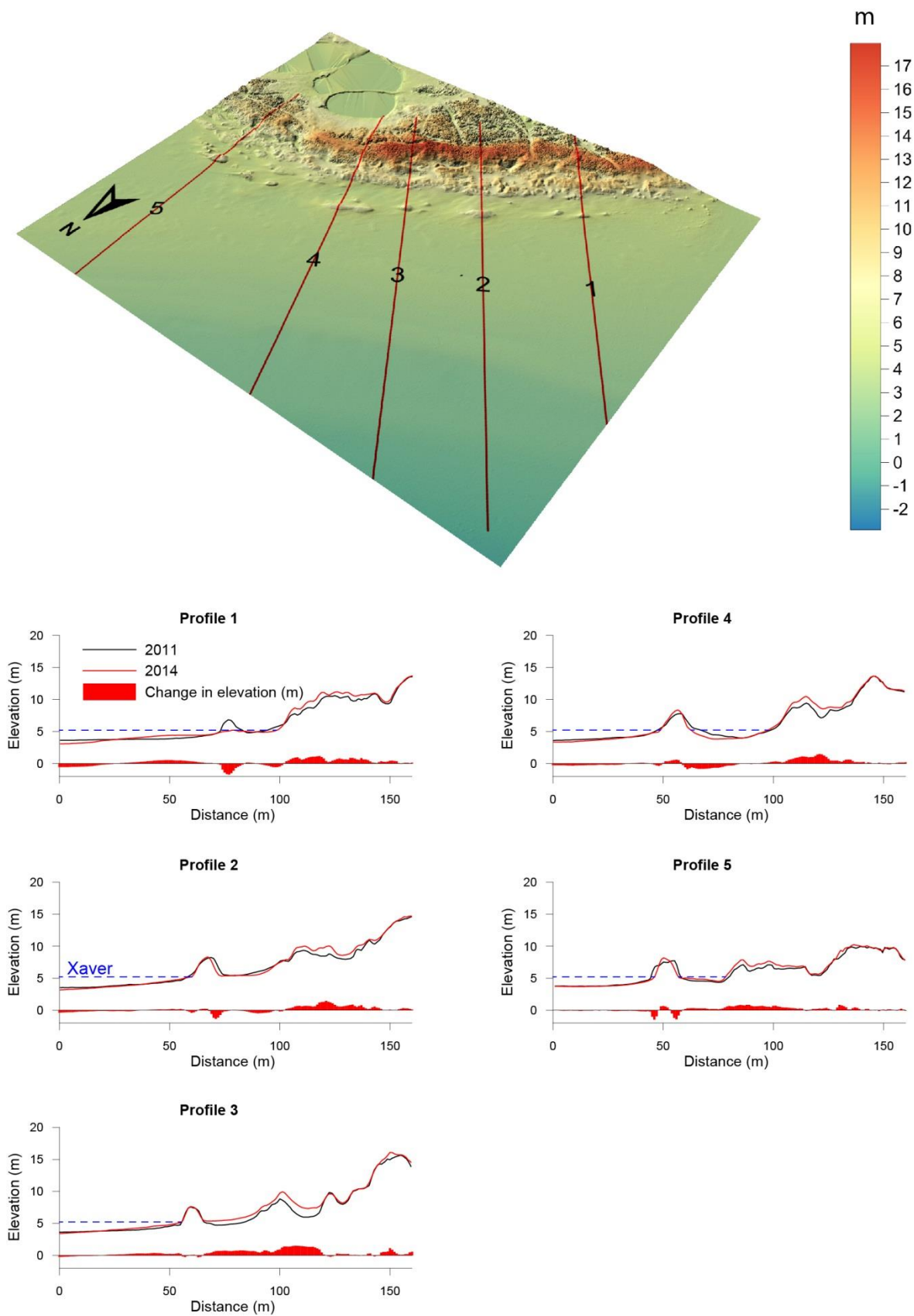


Figure 10. LiDAR-derived Digital Terrain Model showing the morphology of the study area in March 2011 and the location of topographic profiles showing changes in elevation on the upper beach and incipient foredune zone between March 2011 and January 2014.

A sediment budget calculation from a comparison of LiDAR data obtained in 2011 and 2014 along this portion of the coastline (Figure 11) was negative for the foreshore, with a mean erosion of  $-0.19 \text{ m}^3/\text{m}^2$ . This negative budget can be related to the Xaver storm event, the 2014 LiDAR survey having been carried out only a few weeks later. However, on the upper beach, including the nebkhas, the sediment budget was positive, with a gain of  $+0.20 \text{ m}^3/\text{m}^2$ . The maximum accumulation was recorded in the incipient foredune zone with a mean accumulation of  $0.61 \text{ m}^3/\text{m}^2$ . Even if huge nebkhas were present on the upper beach, they did not impede sediment transfer from the foreshore to the incipient foredune zone as well as in the swale where sediment accumulation locally occurred (Figure 11).

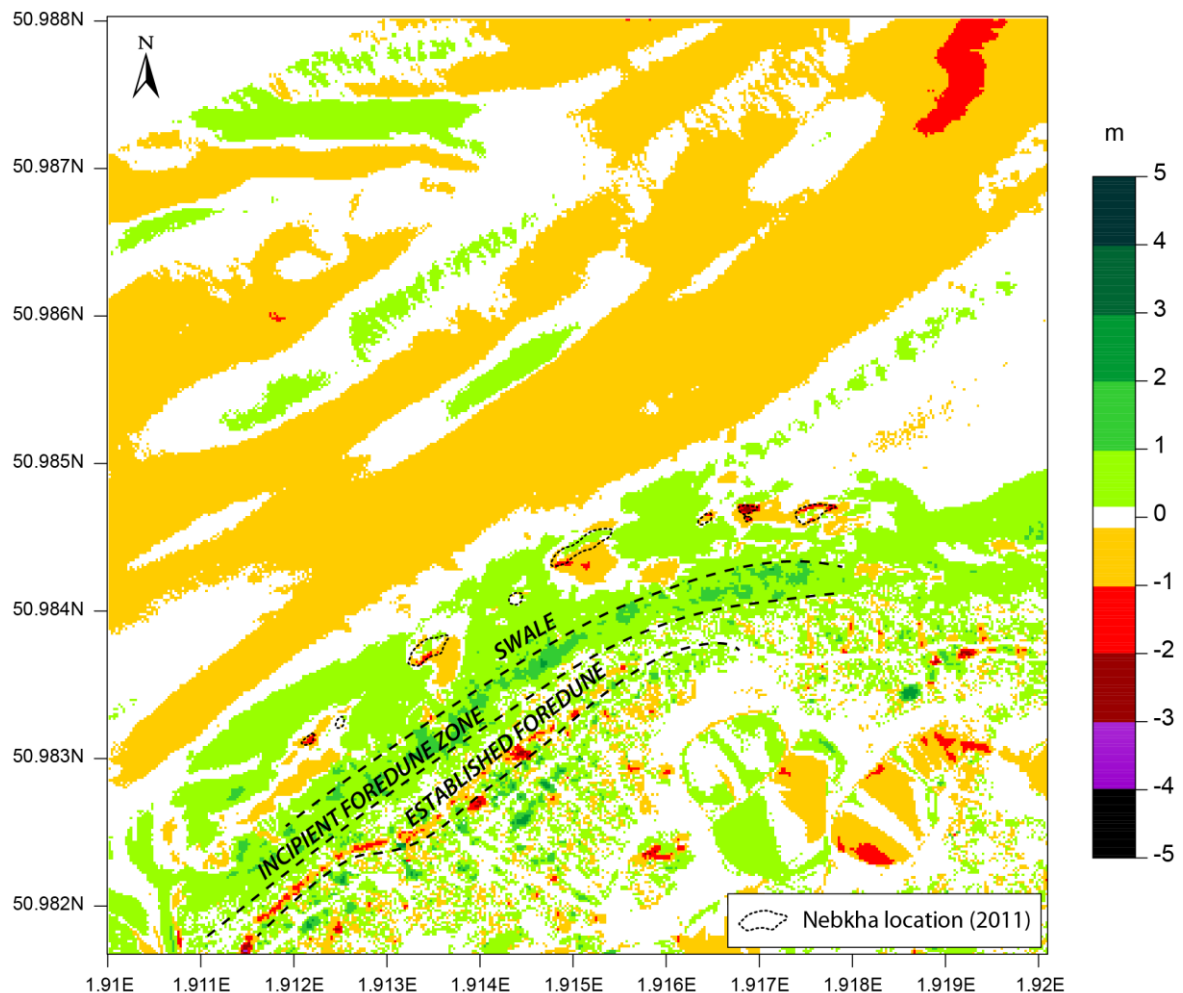


Figure 11. Net changes in surface elevation over the study area between March 2011 and January 2014 based on LiDAR topographic data. The location of the nebkhas in 2011 is also indicated.



Table 2. Analysis of strong wind events ( $\geq 12$  m/s during more than 6 consecutive hours) between March 2011 and January 2014 based on hourly wind data recorded at Calais meteorological station. Tidal range and uppermost water level reached during each event recorded at Calais harbour tide gauge do not include wave-induced set-up. The upper beach widths were extracted from LiDAR topographic profiles (Figure 10) and correspond to the distance between the uppermost water levels during the windy events and the toe of the nebkhas (4.5 to 5 m IGN 69). Mean spring tidal range: 6.5 m; mean neap tidal range: 4 m. The grey lines correspond to potential favourable conditions for aeolian sand transport.

Date of event	Duration (hours)	Mean wind speed (m/s)	Wind direction (°)	Uppermost water level (m IGN69)	Tidal range (m)	Upper beach width (m)
18/06/2011	6	12.9	SW 240/250	3.81	6.03	8 to 28
10/10/2011	8	13.3	SW 240/250	3.36	5.57	61 to 163
07/12/2011	11	12.8	WNW 270	2.84	4.48	95 to 209
04-05/01/2012	24	14.8	WNW 240/300	2.43	3.48	131 to 251
05/03/2012	25	14.4	NW 300-310	2.91	4.55	89 to 198
25/11/2012	7	14.6	SW 250	2.87	4.62	92 to 200
22/12/2012	10	12.5	SW 240	2.41	3.74	129 to 250
11-12/03/2013	23	14.1	E 60-70	3.85	6.39	7 to 24
18/04/2013	10	13.6	SW 240-250	2.25	3.35	138 to 264
10/10/2013	19	13.5	NNW 330-340	3.47	5.49	56 to 159
28/10/2013	7	15	SW 240	2.44	3.0	131 to 261
05/12/2013	7	14.8	WSW 250-260	4.10 m	6.67	0 to 10

Despite two major storm events in 2013, accumulation prevailed between 2011 and 2014, especially on the backshore, out of reach of uppermost water levels. During this period (from March 2011 to January 2014), efficient winds for potential aeolian sand transport (mean wind speed  $\geq 5$  m/s and wind direction  $240^\circ$  to  $60^\circ$ ) blew 28 % of the time, with winds above 8 m/s blowing 10.3 % of the time. Strongest ( $\geq 12$  m/s) efficient winds occurred only 1.4 %, mainly from the southwest sector (the highest mean hourly recorded wind speed during this period of time was 18.5 m/s). Twelve significant wind events (efficient winds  $\geq 12$  m/s blowing during more than 6 consecutive hours) were recorded during this period (Tabl. 2). Seven of them occurred during neap tide or moderate tidal range, potentially favoring aeolian sand transport on the upper beach. During these events, the exposed upper beach was a hundred metres wide, ranging from 89 m to 264 m (based on tide gauge measurements), depending on the location of each nebkha. During such conditions, the maximum wind fetch at high tide, under parallel winds (SW) could exceed 2000 m, while under onshore winds (NNW) the fetch is restricted to less than 160 m. As stressed by Anthony et al., (2009), along macrotidal beaches, strong oblique

onshore winds blowing on the dry upper beach during neap tides likely represent favorable conditions for incipient foredune accretion. Isolated nebkhas were not an obstacle for aeolian sand transport as they are scattered over the upper beach zone. Furthermore the bare sandy swale between them and the incipient foredune zone can also be a sand source for the incipient foredune.

## 5. Discussion

The nebkhas described in the present study are the largest we are aware of developed in the foreshore/intertidal region of a beach. The development of huge, spatially isolated nebkhas disconnected from the main foredune and situated this far out on the foreshore/intertidal region is probably uncommon as, to our knowledge, it has not been specifically reported in the scientific literature. Very large nebkhas have been described in desert environments where they can reach greater heights (Cooke et al., 1993; Langford, 2000; Lang et al., 2013). In China for example, nebkha-like features (*Tamarix* cones) up to 15 m high have been reported in the Taklimakan Desert (Qong et al., 2002). Large sand mounds that accumulate around clumps of trees are called mega-nebkhas (Khalaf et al., 1995). Such mega-nebkhas, reaching 10 m high and up to 1 km long, have notably been reported by Cooper (1958) on the edges of Oregon coastal dunes.

The large nebkhas described in this study, developed at the seaward edge of an upper beach platform close to the highest astronomical tide limit, are scattered and grew up *in situ*, reaching an elevation up to 4 m. According to Ranwell (1972), an irregular zone of scattered nebkhas and shadow dunes can develop if only a few seeds are transported to the backshore by swash or wind, or if only a few plants survive. In the study area, the development of scattered nebkhas is likely linked to the presence of shell lags that are commonly observed on the upper foreshore and backshore. In the presence of such shell lags, restricting sediment supply from the foreshore and the backshore, the wind is unsaturated, which reduces the sediment trapping capacity of the

vegetation (Houser et al., 2008; Hesp and Walker, 2013). In this case, the establishment of pioneer plants is restricted (Davidson-Arnott and Law, 1990) and, in the study area, *Elymus farctus* is the only pioneer species colonising scattered nebkhas. In addition, because the observed nebkhas are isolated from the incipient foredune zone and are surrounded by bare sandy areas, they are exposed to winds from various directions that may supply or remove sediment from one part of the nebkha (Figure 8) as exposure and shelter vary depending on wind direction as underlined by Hesp (2002).

It is well known that beach width and sediment supply, which are closely tied to surfzone-beach type, are important parameters controlling foredune development, particularly where sediment supply is not an important limiting factor (e.g., Short and Hesp, 1982; Psuty, 1988; Davidson-Arnott and Law, 1996). The development of nebkhas on the backshore east of Calais seems to be associated with a wide foreshore and upper beach in a context of abundant sediment supply along a macrotidal coastline. The formation of large nebkhas just above the uppermost tide level is probably favoured by the macrotidal regime characterizing this coastal area. Not only can the wide foreshore exposed at low tide serve as a sediment source for onshore aeolian transport, but the frequency of potentially erosive high water levels is extremely low.

Another key factor in foredune development is the supply of sediment from the shoreface to the beach (e.g., Anthony, 2013; Houser and Ellis, 2013), which is commonly controlled by the onshore migration of nearshore and/or intertidal bars (e.g., Aagaard et al., 2004; Houser 2009). In this area, the welding of nearshore sand banks, which started since at least the 16<sup>th</sup> century resulted in the development of a broad sandflat (1500 m at low tide) in the early 20<sup>th</sup> century (Briquet, 1930). The local increase in sand supply to the beach resulted in beach progradation, which created space in the backshore for coastal dune development. As stressed by Anthony (2013), in this area, the seaward advance of the shoreline was related to the development of this extensive sandflat, followed by the development of coastal dunes with a time lag on the order of years.

Historical evidence reveals that beach progradation resulted in successive episodes of dune formation. By the mid-19<sup>th</sup> to the beginning of the 20<sup>th</sup> century, sandy islets 150 m to 210 m wide, covered by small coastal dunes, formed on the upper beach, disconnected from the main shoreline (Briquet, 1930). These sandy islets were likely related to the presence of the extensive sandflat over which aeolian sand transport was active. Such large and low-elevated sandy islets disconnected from the main foredune have been reported in north Lincolnshire along the eastern coast of UK on a dissipative macrotidal beach (Montreuil, 2012; Montreuil et al., 2013). Even after 10 years of development, they were still expanding but had not merged with the established foredunes (Montreuil et al., 2013). East of Calais, however, the sandy islets observed on the aerial photography of 1938 (Figure 2) progressively merged to the main shoreline, resulting in a shoreline advance up to 320 m seaward.

Following this phase of sandy islets coalescence and significant shoreline advance, continuing beach accretion resulted in the development of incipient foredunes, and nebkhas formed at the uppermost tide level, disconnected from the incipient foredune zone by a swale. Whereas, according to Briquet (1930), the formation of foredunes all along this coastline during the 19<sup>th</sup> century and the early 20<sup>th</sup> century resulted from the coalescence of large “insular dunes”, only isolated nebkhas developed during the late 20<sup>th</sup> century. This is presumably linked to the progressive eastward migration of the extensive sandflat (Héquette and Aernouts, 2010) that resulted in the reduction in beach width along this stretch of the coastline.

Nebkhas started to develop by the mid 90’s and progressively grew up, reaching 1 to 2 m high in 2001 (Tékin, 2004) and up to 3.5 m to 4 m in 2011. Since 2011, very little change in their elevation was recorded (Figure 11). While the nebkhas formed, a shore-parallel partially vegetated foredune zone developed at the toe of the established foredune (Figure 4). In a situation with shore-parallel incipient and established foredune ridges, there are usually two sedimentation peaks, one in the incipient zone and the other one in the established foredune, with lower sedimentation in the bare zone separating the two (Arens, 1996; Keijsers et al.,

2015). In the study area, maximum accumulation was recorded in the incipient foredune zone, with vertical accretion up to 1.2 m between 2011 and 2014, while no major changes were observed in the established foredune (Figure 10). Although large nebkhas were present on the upper beach, they only trapped a small amount of wind-blown sand that was transferred from the foreshore to the incipient foredune zone. The swale between the nebkhas and the incipient foredune zone underwent both slight erosion and accumulation. Swales are generally low to limited aeolian deposition zones and become deeper as seaward incipient foredunes become higher (Olson, 1958; Hesp, 1983, 2002), but here, the swale remained fairly stable.

The analysis of aerial photographs and LiDAR topographic data revealed that the incipient foredune zone developed seaward at the expense of the swale (Figure 4 and Figure 11). This evolution suggests that the nebkhas may progressively merge with the prograding incipient foredunes, being eventually included in a new incipient foredune zone. The merging of the nebkhas would therefore occur due to maximum sand accumulation in the incipient foredune zone and not as a result of sediment accumulation in the nebkha zone. This would contrast with what is generally observed along foredunes that develop seaward through the development of the seawardmost embryo dunes (Pye and Tsoar, 1990; Hesp, 2011). Here the scattered nebkhas would not interrupt sand transfer from the foreshore to the incipient foredune zone located landward.

Our observations suggest that the most developed nebkhas have reached an equilibrium stage as their height, length and width remained fairly stable since 2011, although some of them were eroded by the major storm surge of December 2013. According to Mountley and Russel (2006), nebkhas have a characteristic shape and tend to adopt a similar morphology in any bioclimatic setting, suggesting they reach equilibrium once they have developed beyond their embryonic state. According to Hesp and Walker (2013), as nebkhas build they usually evolve through an evolutionary cycle of development from small to large forms. Cycles of nebkha build-up and erosion, processes controlling their size and density, and vegetation behaviour

were described by several authors (Suslov, 1961; Gile, 1966; Mahmoudi 1977; Gibbens et al., 1983; Hesp, 1988, 1989, Khalaf et al., 1995). Three stages of development were proposed by Tengberg and Chen (1998): (1) sand deposition and nebkha development, (2) steady state, and (3) nebkha erosion due to the disappearance of the vegetation and of the mound of sand.

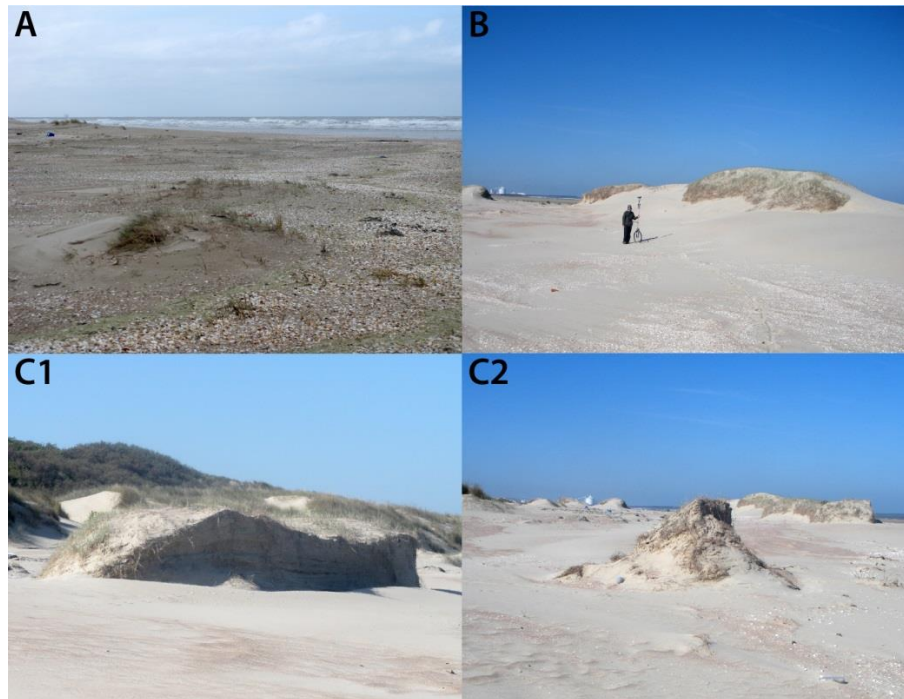


Figure 12. Examples of stages of nebkha development east of Calais: (A) initial development of scattered low dunes developing on shell lag close to highest astronomical tide level; (B) fully-developed nebkha having reached equilibrium state; (C) partially-eroded nebkhas.

In the study area, three stages of nebkha development are observed. Initially, nascent nebkhas develop on a shell lag close to the highest astronomical tide level (Figure 12 A). The surface area and height of the nebkha increase with time as wind-blown sand is supplied from the foreshore. The largest ones, reaching a height up to 4 m, seem to have reached an equilibrium state (Figure 12 B) as only minor change in their morphology can be observed. Nebkhas can develop and eventually attain equilibrium on the upper beach were they are only very episodically reached by storm surges. A major storm event associated with an extreme water level, such as the one of December 2013, can nevertheless partially or strongly erode some of the fully-developed nebkhas (Figure 12 C1 and C2) or even completely wash away

smaller nebkhas (Figure 10, profile 1). However, in this context of high sediment supply, nebkhas may eventually merge with the incipient foredune zone depending on the magnitude and frequency of future storm events.

## 6. Conclusions

(i) Large nebkhas, up to 4 m high and 14 m wide, have developed on the upper beach east of Calais, forming aeolian landforms parallel to the dominant southwest winds near the uppermost tide level and disconnected from the main foredune.

(ii) These large nebkhas formed in a coastal area characterized by abundant sediment supply from the shoreface due to the onshore migration of a nearshore sand bank that resulted in the formation of a wide sandy foreshore which favoured active incipient foredune development and significant seaward shoreline progradation.

(iii) They do not form an incipient foredune zone, but mounds that grew vertically and remained in the form of isolated huge nebkhas disconnected from the incipient foredune zone by a swale.

(iv) The nebkhas consist of scattered landforms that did not prevent aeolian accretion landward in the incipient foredune zone where the maximum accretion rates were recorded.

(v) Due to the seaward expansion of the incipient foredune zone, the nebkhas could be progressively amalgamated in the prograding foredune zone if they are not eroded during storms associated with high water levels.

(vi) The distribution of such large coastal nebkhas is probably very limited since the descriptions of similar examples of aeolian coastal landforms are virtually absent in the scientific literature.

(vii) Such uncommon nebkhas developed on an upper beach are presumably restricted to low gradient macrotidal beaches associated with an excess of sand supply.

## **Acknowledgements**

This study was partly funded by the CNRS (*Centre National de la Recherche Scientifique*) and by the *Ministère de l'Education Nationale et de l'Enseignement Supérieur* through operating research funds to the *Laboratoire d'Océanologie et de Géosciences*. The LiDAR data were acquired thanks to the CLAREC project. Thanks are due to P. Bretel and F. Levoy for the acquisition and processing of the raw LiDAR data. Vertical aerial photographs were obtained from the IGN (*Institut National de l'Information Géographique et Forestière*). Water level data were obtained from the French Naval Hydrographic and Oceanographic Service. Wind data were provided by *Météo-France* through a research agreement with the Université du Littoral Côte d'Opale. Thanks are due to V. Sipka, A. Crapoulet and A. Cartier for their help during the field surveys. The authors would also like to thank Patrick Hesp for his comments and suggestions on an earlier draft of the manuscript. The constructive comments from two anonymous reviewers are gratefully acknowledged.



## References

- Aagaard, T., Davidson-Arnott, R.G.D., Greenwood, B. and Nielsen, J., 2004. Sediment supply from shoreface to dunes: linking sediment transport measurements and long-term morphological evolution. *Geomorphology* 60, 205-224.
- Anthony, E.J., 2013. Storms, shoreface morphodynamics, sand supply, and the accretion and erosion of coastal dune barriers in the southern North Sea. *Geomorphology* 199, 8-21.
- Anthony, E.J., Levoy, F., Montfort, O. and Degryse-Kulkarni, C., 2005. Patterns of short-term intertidal bar mobility on a ridge and runnel beach, Merlimont, Northern of France. *Earth Surf. Processes Landf.* 30: 81-93.
- Anthony, E.J., Vanhee, S. and Ruz, M-H., 2006. Short-term beach-dune sand budgets on the north sea coast of France: Sand supply from shoreface to dunes, and the role of wind and fetch. *Geomorphology* 81, 316-329.
- Anthony, E.J., Ruz, M-H. and Vanh e, S., 2009. Aeolian sand transport over complex intertidal bar-trough beach topography. *Geomorphology* 105, 95-105.
- Ardon, K., Tsoar, H. and Blumberg, D.G., 2009. Dynamics of nebkhas superimposed on a parabolic dune and their effect on the dune dynamics. *J. Arid Env.* 73, 1014-1022.
- Arens, S.M., 1996. Patterns of sand transport on vegetated foredunes. *Geomorphology* 17, 339-350.
- Augris, C. and Clabaut, P., 2001. Cartographie g eologique des fonds marins c otiers Exemples le long du littoral fran ais. Editions Ifremer, Brest, 76 pp.
- Augris, C., Clabaut, P. and Vicaire, O., 1990. Le domaine marin du Nord-Pas-de-Calais – Nature, morphologie et mobilit  des fonds. Edition IFREMER – R gion Nord-Pas-de-Calais, 93 pp.
- Bagnold, R.A., 1941. *The Physics of Blown Sand and Desert Dunes*. Methuen, London, 265 pp.

- Battiau-Queney, Y., Fauchois, J., Deboudt, P. and Lanoy-Ratel, P., 2001. Beach-dune systems in a macrotidal environment along the northern French coast. *J. Coast. Res. Special Issue* 34, 580-592.
- Bauer, B.O. and Sherman, D.J., 1999. Coastal dune dynamics: problems and prospects. In: A.S. Goudie, I. Livingstone and S. Stokes (Eds.), *Aeolian Environments, Sediments, and Landforms*, Wiley, Chichester, pp. 71–103.
- Beck, C., Clabaut, P., Dewez, S., Vicaire, O., Chamley, H., Augris, C., Hoslin, R. and Caillot, A., 1991. Sand bodies and sand transport paths at the English Channel-North Sea border: morphology, dynamics and radioactive tracing. *Ocean. Acta* 11, 111-121.
- Briquet, A., 1930. *Le Littoral du Nord de la France et son évolution morphologique*. Armand Colin, Paris, 439 pp.
- Carter, R.W.G., 1976. Formation, maintenance and geomorphological significance of an aeolian shell pavement. *J. Sed. Petrol.* 46, 418-429.
- Carter, R.G.W., 1988. *Coastal Environments – An Introduction to the Physical, Ecological and Cultural Systems of Coastlines*, Academic Press, London, 617 pp.
- Carter, R.W.G., Bauer, B.O., Sherman, D.J., Davidson-Arnott, R.G.D., Gares, P.A., Nordstrom, K.F. and Orford, J.D., 1992. Dune development in the aftermath of stream outlet closure: examples from Ireland and California. In: R.W.G. Carter, T.G.F. Curtis and M.J. Sheehy-Skeffington, (Eds.), *Coastal Dunes: Geomorphology, Ecology and Management for Conservation*. Balkema, Rotterdam, pp. 57–69.
- Cartier, A. and Héquette, A., 2015. Vertical distribution of longshore sediment transport on barred macrotidal beaches, Northern France. *Cont. Shelf Res.* 93, 1-16.
- Chaverot, S., Héquette, A. and Cohen, O. 2008. Changes in storminess and shoreline evolution along the northern coast of France during the second half of the 20<sup>th</sup> century. *Zeits. Geomorph. Suppl.-Bd.*, 52(3), 1-20.

- Cooke, R.U., Warren, A. and Goudie, A.S., 1993. Desert Geomorphology. UCL Press, London, 526 pp.
- Cooper, W.S., 1958. Coastal sand dunes of Oregon and Washington. The Geological Society of America. Memoir 72, 169 pp
- Daubord, C., 2014. Caractérisation de 7 événements de tempête de l'automne-hiver 2013-2014 à partir des données disponibles au SHOM. SHOM Report 001/2014, Brest, 37 pp.
- Davidson-Arnott, R.G.D., 2010. Introduction to Coastal Processes and Geomorphology. Cambridge University Press, Cambridge, 442 pp.
- Davidson-Arnott, R.G.D. and Law, M.N., 1990. Seasonal patterns and controls on sediment supply to coastal foredunes, Long Point, Lake Erie. In: K.F. Nordstrom, N.P. Psuty and R.W.G. Carter, Coastal Dunes: Form and Process, Wiley, London, pp. 177-200.
- Davidson-Arnott, R.G.D. and Law, M.N., 1996. Measurement and prediction of long-term sediment supply to coastal foredunes. J. Coast. Res. 12, 654-663.
- El-Bana, M. I., Li, Z.Q. and Nijs, I., 2007. Role of host identity in effects of phytogenic mounds on plant assemblages and species richness on coastal arid dunes. J. Vegetation Sci. 18, 635-44.
- Gibbens, R. P., Tromble, J. N., Hennessey, J. T. and Cardenas, M., 1983. Soil movement in mesquite dunelands and former grasslands of southern New Mexico from 1933 to 1980. J. Range Manage. 36, 145-148.
- Gile, L. H., 1966. Coppice dunes and the Rotura soil. Proc. Soil Sci. Soc. America 30, 657-676.
- Héquette, A. and Aernouts, D., 2010. The influence of nearshore sand bank dynamics on shoreline evolution in a macrotidal coastal environment, Calais, Northern France. Cont. Shelf Res. 30, 1349-1361.
- Héquette, A. and Cartier, A., 2016. Theoretical and observed breaking wave height on a barred macrotidal beach: implications for the estimation of breaker index on beaches with large tidal range. J. Coast. Res., SI 75, 861-866.

- Héquette, A., Hemdane, Y. and Anthony, E.J., 2008. Sediment transport under wave and current combined flows on a tide-dominated shoreface, northern coast of France. *Mar. Geol.* 249, 226-242.
- Hernandez-Cordero, A.I., Hernandez-Calvento, L. and Pérez-Chacon, E., 2015. Relationship between vegetation dynamics and dune mobility in an arid transgressive coastal system, Maspalomas, Canary Islands. *Geomorphology*, 238: 160-176.
- Hesp, P.A., 1981. The formation of shadow dunes. *J. Sed. Petrol.* 51, 101–112.
- Hesp, P.A., 1983. Morphodynamics of incipient foredunes in N.S.W., Australia. In: M. E. Brookfield and T.S. Ahlbrandt (Eds.) *Eolian Sediments and Processes*, Elsevier, Amsterdam, 325-342.
- Hesp, P.A., 1984. Foredune formation in Southeast Australia; In: B.G. Thom (Ed.) *Coastal Geomorphology in Australia*, Academic Press, Sydney, p. 69-97.
- Hesp, P.A., 1988. Morphology, dynamics, and internal stratification of some established foredunes in southeast Australia: *Sed. Geol.* 55, 17-41.
- Hesp, P.A., 1989. A review of biological and geomorphological processes involved in the initiation and development of incipient foredunes. In: C.H. Gimingham, W. Ritchie, B.B. Willetts and A.J. Willis (Eds.), *Coastal Sand Dunes*, Proceedings of the Royal Society of Edinburgh 96B. Royal Society, Edinburgh, p. 181-201.
- Hesp, P.A., 2002. Foredunes and blowouts: initiation, geomorphology and dynamics. *Geomorphology* 48, 245-268.
- Hesp, P.A., 2011. Dune coasts. In: E. Wolanski and D.S. McLusky (Eds.), *Treatise on Estuarine and Coastal Science*, vol. 3, Academic Press, Waltham, MA, p. 193-221.
- Hesp, P.A., 2012. Surfzone-beach-dune interactions. In: W.M. Kranenburg, E.M. Horstman and K.M. Wijnberg (Eds.), *NCK-days 2012*, University of Twente, Department of Water Engineering & Management, Enschede, The Netherlands, p. 35-40.

- Hesp, P.A. and McLachlan, A., 2000. Morphology, dynamics, ecology and fauna of *Arctotheca populifolia* and *Gazania rigens* nabkha dunes. *J. Arid Env.* 44, 155-172.
- Hesp, P.A. and Walker, I.J., 2013. Aeolian environments: coastal dunes. In: J. Shroder, N. Lancaster, D.J. Sherman, A.C.W. Baas (Eds.), *Treatise on Geomorphology*, vol. 11, *Aeolian Geomorphology*, Academic Press, San Diego, CA, p. 109-133.
- Houser, C. 2009. Synchronization of transport and supply in beach–dune interaction. *Progr. Phys. Geogr.* 33, 733-746.
- Houser, C. and Ellis, J., 2013. Beach and Dune Interaction. In: J. F Shroder (Ed.), *Treatise on Geomorphology*, vol 10, Academic Press, San Diego, p. 267-288.
- Houser, C., Hapke, C. and Hamilton, S., 2008. Controls on coastal dune morphology, shoreline erosion and barrier island response to extreme storms. *Geomorphology* 100, 223-240.
- Keijsers, J.G.S., De Groot, A.V., and M.J. Riksen, P.M., 2015 Vegetation and sedimentation on coastal foredunes. *Geomorphology* 228, 723-734.
- King, C. A. M., 1972. *Beaches and coasts* (2<sup>nd</sup> ed). Arnold, London, 570 p.
- Khalaf, F. I., Misak, R., and Al-Dousari, A., 1995. Sedimentological and morphological characteristics of some nabkha deposits in the northern coastal plain of Kuwait, Arabia. *J. Arid Env.* 2, 267-92.
- Khalaf, F. I. and Al-Awadhi, J. M., 2012. Sedimentological and morphological characteristics of gypseous coastal nabkhas on Bubiyan Island, Kuwait, Arabian Gulf. *J. Arid Env.* 82, 31–43.
- Lancaster, N., 1995. *Geomorphology of Desert Dunes*. London and New York: Routledge, 312 pp.
- Lang, L., Wang, X., Hasi, E. Hua, T., 2013. Nebkha (coppice dune) formation and significance to environmental change reconstruction in arid and semi-arid areas. *J. Geogr. Sci.* 23, 344-358.

- Langford, R. P., 2000. Nabkha (coppice dune) fields of south-central New Mexico, U.S.A. *J. Arid Env.* 46, 25-41.
- Mahmoudi, F., 1977. Les Nebkhas de Lut, Iran. *Ann. Géogr.* 86, 315-321.
- Martinez, M.L. and Psuty, N.P., 2004. *Coastal Dunes, Ecology and Conservation*, Ecological Studies, Springer-Verlag, Berlin Heidelberg, 386 pp.
- Masselink, G. Scott, T., Poate, T., Russell, P., Davidson, M. and Conley, D., 2016. The extreme 2013/2014 winter storms: hydrodynamic forcing and coastal response along the southwest coast of England. *Earth Surf. Process. Landf.* 41, 378-391.
- Melton, F. A., 1940. A tentative classification of sand dunes its application to dune history in the southern High Plains. *Geology* 48, 113-174.
- Montreuil, A.-L., 2012. *Aeolian Dune Development and Evolution on a Macro-tidal Coast with a Complex Wind Regime, Lincolnshire Coast, UK*. Ph.D. Thesis, Loughborough University, UK.
- Montreuil, A.-L., Bullard, J.E., Millett, J. and Chandler, J.H., 2013. Decadal and seasonal development of embryo dunes on an accreting macrotidal beach: North Lincolnshire, UK, *Earth Surf. Process. Landf.* 38, 1851-1868.
- Mountney, N. P. and Russell, A. J., 2006. Coastal aeolian dune development, Sólheimasandur, southern Iceland. *Sed. Geol.* 192, 167–181.
- Nicholson, I.A., 1952. A study of *Agropyron junceum* (Beauv.) in relation to the stabilisation of coastal sand and the development of sand dunes. M.Sc. Thesis, University of Durham.
- Nickling, W.G. and Wolfe, S.A., 1994. The morphology and origin of nabkhas, region of Mopti, Mail, West Africa. *J. Arid Env.* 28, 13-30.
- Olson, J.S., 1958. Lake Michigan dune development 2. Plants as agents and tools in geomorphology. *J. Geol.* 66, 345-351.
- Psuty, N.P., 1988. Sediment budget and dune/beach interaction. *J. Coast. Res.*, SI 3, 1-4.
- Pye, K. and Tsoar, H., 1990. *Aeolian Sand and Sand Dunes*. Unwin Hyman, London, 396 pp.

- Pye, K. and Blott, S.J., 2008. Decadal-scale variation in dune erosion and accretion rates: An investigation of the significance of changing storm tide frequency and magnitude on the Sefton coast, UK. *Geomorphology*, 102, 652–666.
- Qong M., Takamura H.; Hudaberdi M., 2002. Formation and internal structure of Tamarix cones in the Taklimakan Desert. *J. Arid Env.* 50, 81–97.
- Ranwell, D.S., 1972. *Ecology of Salt Marshes and Sand Dunes*. Chapman and Hall, London, 258 pp.
- Reichmüth, B. and Anthony, E.J., 2007. Tidal influence on the intertidal bar morphology of two contrasting macrotidal beaches. *Geomorphology* 90, 101-114.
- Ruz, M-H. and Hesp, P.A., 2014. Geomorphology of high-latitude coastal dunes: A review. In: I. P. Martini and H. R. Wanless (eds). *Sedimentary Coastal Zones from High to Low Latitudes: Similarities and Differences*. Geological Society, London, Special Publication 388, 199-212.
- Ruz, M-H., Anthony, E.J. and Faucon, L., 2005. Coastal dune evolution on a shoreline subject to strong human pressure : the Dunkirk area, northern France. In: J.-L. Herrier, J. Mees, A. Salman, J. Seys, H. Nieuwenhuysse and I. Dobbelaere (Eds.). *Proceedings ‘Dunes & Estuaries 2005’ – International Conference on Nature restoration Practices in European Coastal Habitats*, Koksijde, Belgium, 19-23 September 2005, p. 441-449.
- Ruz, M-H., Héquette, A. and Maspataud, A., 2009. Identifying forcing conditions responsible for foredune erosion on the northern coast of France. *J.Coast. Res.*, Special Issue 56, 356-360.
- Saye, S.E., Van Der Wal, D., Pye, K. and Blott, S.J., 2005. Beach–dune morphological relationships and erosion/accretion: An investigation at five sites in England and Wales using LIDAR data. *Geomorphology* 72, 128-155.

- Sedrati, M. and Anthony, E.J., 2007. Storm-generated morphological change and longshore sand transport in the intertidal zone of a multi-barred macrotidal beach. *Mar. Geol.* 244, 209-229.
- Short, A.D. and Hesp. P.A., 1982. Wave, beach and dune interactions in South Eastern Australia. *Mar. Geol.* 48, 259-284.
- Suslov, S. P., 1961. *Physical Geography of Asiatic Russia* (translated by N. D. Gershevsky). London: Freeman.
- Tékin, M., 2004. Un type original de dunes embryonnaires sur la plage macrotidale du Fort-Vert (Pas de Calais, France). *Bull. Ass. Géogr. Français* 81, 418-426.
- Tengberg, A. and Chen, D., 1998. A comparative analysis of nebkhas in central Tunisia and northern Burkina Faso. *Geomorphology* 22, 181-192.
- Woolard, J.W. and Colby, J.D., 2002. Spatial characterization, resolution, and volumetric change of coastal dunes using airborne LIDAR: Cape Hatteras, North Carolina. *Geomorphology* 48, 269-287.