



HAL
open science

Unidirectional Rashba Spin Splitting in Single Layer WS₂(1-x)Se_{2x} alloy

Jihene Zribi, Debora Pierucci, Federico Bisti, Biyuan Zheng, José Avila, Lama Khalil, Cyrine Ernandes, Julien Chaste, Fabrice Oehler, Marco Pala, et al.

► **To cite this version:**

Jihene Zribi, Debora Pierucci, Federico Bisti, Biyuan Zheng, José Avila, et al.. Unidirectional Rashba Spin Splitting in Single Layer WS₂(1-x)Se_{2x} alloy. *Nanotechnology*, 2023, 34 (7), pp.075705. 10.1088/1361-6528/aca0f6 . hal-04265051

HAL Id: hal-04265051

<https://hal.science/hal-04265051>

Submitted on 30 Oct 2023

HAL is a multi-disciplinary open access archive for the deposit and dissemination of scientific research documents, whether they are published or not. The documents may come from teaching and research institutions in France or abroad, or from public or private research centers.

L'archive ouverte pluridisciplinaire **HAL**, est destinée au dépôt et à la diffusion de documents scientifiques de niveau recherche, publiés ou non, émanant des établissements d'enseignement et de recherche français ou étrangers, des laboratoires publics ou privés.

Unidirectional Rashba Spin Splitting in Single Layer $WS_{2(1-x)}Se_{2x}$ alloy

Jihene Zribi¹, Debora Pierucci¹, Federico Bisti², Biyuan Zheng³, José Avila⁴, Lama Khalil¹, Cyrine Ernandes¹, Julien Chaste¹, Fabrice Oehler¹, Marco Pala¹, Thomas Maroutian¹, Ilka Hermes⁵, Emmanuel Lhuillier⁶, Anlian Pan^{3||}, and Abdelkarim Ouerghi^{1||}

¹ Université Paris-Saclay, CNRS, Centre de Nanosciences et de Nanotechnologies, 91120, Palaiseau,

² Dipartimento di Scienze Fisiche e Chimiche, Università dell'Aquila, Via Vetoio 10, 67100 L'Aquila, Italy

³ Key Laboratory for Micro-Nano Physics and Technology of Hunan Province, State Key Laboratory of Chemo/Biosensing and Chemometrics, College of Materials Science and Engineering, Hunan University, Changsha, Hunan 410082, China

⁴ Synchrotron-SOLEIL, Saint-Aubin, BP48, F91192 Gif sur Yvette Cedex, France

⁵ Park Systems Europe GmbH, Schildkroetstrasse 15, 68199 Mannheim, Germany

⁶ Sorbonne Université, CNRS, Institut des NanoSciences de Paris, INSP, F-75005 Paris, France

Atomically thin two-dimensional (2D) layered semiconductors such as transition metal dichalcogenides (TMDs) have attracted considerable attention due to their tunable band gap, intriguing spin-valley physics, piezoelectric effects and potential device applications. Here we study the electronic properties of a single layer $WS_{1.4}Se_{0.6}$ alloys. The electronic structure of this alloy, explored using angle resolved photoemission spectroscopy, shows a clear valence band structure anisotropy characterized by two paraboloids shifted in one direction of the k -space by a constant in-plane vector. This band splitting is a signature of a unidirectional Rashba spin splitting with a related giant Rashba parameter of 2.8 ± 0.7 eV Å. The combination of angle resolved photoemission spectroscopy with piezo force microscopy highlights the link between this giant unidirectional Rashba spin splitting and an in-plane polarization present in the alloy. These peculiar anisotropic properties of the $WS_{1.4}Se_{0.6}$ alloy can be related to local atomic orders induced during the growth process due the different size and electronegativity between S and Se atoms. This distorted crystal structure combined to the observed macroscopic tensile strain, as evidenced by photoluminescence, displays electric dipoles with a strong in-plane component, as shown by piezoelectric microscopy. The interplay between semiconducting properties, in-plane spontaneous polarization and giant out-of-plane Rashba spin-splitting in this two-dimensional material has potential for a wide range of applications in next-generation electronics, piezotronics and spintronics devices.

KEYWORDS: in-plane polarization – 2D Materials – $WS_{2(1-x)}Se_{2x}$ alloy – Electronic band structure

|| Corresponding authors E-mail:

abdelkarim.ouerghi@c2n.upsaclay.fr

anlian.pan@hnu.edu.cn

1
2
3 Atomically thin two-dimensional (2D) layered semiconductors such as transition metal dichalcogenides (TMDs)
4 MX_2 with $\text{M} = \text{Mo}$ or W and $\text{X} = \text{S}$, Se or Te have attracted considerable attention due to their tunable band gap,
5 intriguing spin-valley physics piezoelectric effects and potential device applications.¹⁻⁶ In order to explore the
6 potential properties of these 2D layered materials, their combination into heterostructures can give access to a
7 variety of the chemical, structural and electronic properties of TMDs.⁷⁻⁹ These heterostructures have been proven
8 to be of great interest for the realization of the next-generation of specific 2D devices, for which the electrical and
9 optical properties are intrinsically determined by the unique energy band alignment at their hetero-interfaces.¹⁰⁻¹⁷
10 In this regard, TMDs materials are particularly interesting semiconductors as they combine tunable indirect to
11 direct band gap transitions¹⁸ with large exciton binding energies and lack of inversion symmetry¹⁹. Furthermore,
12 the presence of d orbitals from the heavy transition metal (W , Mo) can lead to strong spin-orbit coupling effects
13 (SOC), which induces an energy splitting of the valence bands at the corners (K points) of the first Brillouin zone
14 (BZ). Due to the lack of the inversion symmetry in monolayer MX_2 , the spin degeneracy is lifted. Therefore, the
15 bands are spin polarized with opposite polarization in the two K and K' valleys. If the out-of-plane mirror
16 symmetry of the system is also broken, then a Rashba spin splitting can be induced at the Γ point of the BZ. This
17 Rashba spin splitting leads to a shift of the spin polarized bands in the momentum space (Δk_R) in opposite
18 directions, lifting the spin degeneracy of electronic states around the Γ point²⁰⁻²³. The relevant quantities are the
19 magnitude of the Rashba effect induced spin splitting, characterized by the Rashba energy ΔE_R of the split states,
20 and the Rashba spin splitting parameter²⁴ $\alpha_R = \frac{2\Delta E_R}{\Delta k_R}$. This Rashba-type spin splitting based on 2D materials has
21 attracted increasing interest in the field of spintronic applications^{25,26}. For instance, the spin field effect -
22 transistor (SFET) as proposed by Datta-Das²⁷ requires a channel material with large Rashba-type spin splitting
23 bands and an electrically tunable Rashba constant to effectively modulate the electron current by driving the spin
24 precession²⁸. Then, various efforts have been made to break out-of-plane mirror symmetry in MX_2 monolayers. In
25 particular, recent *ab initio* calculations²² predicted that this symmetry can be broken for high electric fields (0.1–0.5
26 $\text{V}/\text{\AA}$) inducing an anisotropic Rashba spin splitting. The Rashba effect has been demonstrated also in van der
27 Waals heterostructures, where MX_2 monolayer have been combined with different materials such as Bi (111)²⁹
28 and ferromagnet CoFeB ³⁰. Recently, ternary compounds of TMDs (MXY , $\text{M} = \text{Mo}$ or W and $\text{X}, \text{Y} = \text{S}$, Se , Te
29 where $\text{X} \neq \text{Y}$) have been synthesized in the Janus form, where the top chalcogen X atoms have been completely
30 replaced by Y atoms³¹, or in the alloy form^{32,33}. Presenting an intrinsic mirror asymmetry, these materials are
31 predicted to display Rashba effect³⁴⁻³⁷ and a possible in plane and/or out of plane electrical polarization^{31,38-40}.
32 Despite numerous theoretical studies, experimental evidence of such intrinsic electrical polarization and related
33 Rashba spin splitting of the bands is still missing.

34
35
36
37
38
39
40
41
42
43
44
45
46
47
48
49 Here, we use chemical vapor deposition (CVD) technique to prepare monolayer $\text{WS}_{1.4}\text{Se}_{0.6}$ alloy⁴¹. Based on
50 theoretical calculations³⁸, we expect a stable in-plane spontaneous polarization, which we are able to experimentally
51 characterize using piezo-force microscopy (PFM). Angle resolved photoemission spectroscopy (ARPES)
52 measurements show a clear valence band structure anisotropy characterized by two paraboloids shifted in the k -
53 space by a constant in-plane vector. This experimental out-of-plane Rashba spin splitting ($\alpha_R = 2.8 \pm$
54 0.7 eV \AA) is ascribed to the in-plane spontaneous polarization observed in the $\text{WS}_{2(1-x)}\text{Se}_{2x}$ alloy by PFM.
55
56
57
58
59
60

1
2
3 The standard crystal structure of hexagonal TMDs as MX_2 monolayer is shown [Figure 1\(a\)](#). Due to the hexagonal
4 symmetry of the monolayer, the in-plane positions of the top and bottom chalcogen sub-layers are superposed.
5 Moving to the band structure, we can describe the effective magnetic field inducing spin precession of carriers as
6 by $\mathbf{B}(\mathbf{k}) = \alpha(\mathbf{E} \times \mathbf{k})$, with α a material-dependent parameter accounting for the first-order momentum Rashba
7 spin splitting, \mathbf{E} an effective electric field originating from either external potential differences or internal
8 polarization and \mathbf{k} the carrier wavevector. [Figures 1\(b-d\)](#) sketch the three basic band splitting types of the valence
9 band at Γ in different spin-orbit field orientations. From left to right, we show the case without field $E=0$ ([Figure](#)
10 [1\(b\)](#)), with a vertical electric field $\mathbf{E} = E\hat{z}$ ([Figure 1\(c\)](#)), and with an in-plane electric field $\mathbf{E} = E\hat{x}$ ([Figure 1\(d\)](#)).
11 The second and latter case corresponds to the conventional Rashba spin splitting and the out-of-plane Rashba spin
12 splitting, respectively. These two configurations can be easily distinguished in the k -space because the
13 conventional Rashba effect (out-of-plane electric field) induces an isotropic spin-splitting of the bands, while the
14 out-of-plane Rashba effect (in-plane electric field) creates a unidirectional spin-splitting of the bands (i.e., an
15 anisotropic valence band structure modulation) separated by a constant vector Δk_y , and a spin-degenerate line at
16 $k_x=0$. The former presents spin textures that are clockwise and anti-clockwise for the two top valence bands,
17 whereas the latter has a persistent spin texture with a k -independent spin orientation (see also Supporting
18 Information [Figure S1](#)).

19
20
21
22
23
24
25
26
27 In the present study, our $\text{WS}_{2(1-x)}\text{Se}_{2x}$ alloy flakes of monolayer thickness are obtained by CVD on SiO_2/Si
28 substrate³². The results of the growth are shown in [Figure 1\(e\)](#) with a triangular shape (3-fold symmetry) and well-
29 defined W zigzag edges (W-zz)⁴²⁻⁴⁴ (average size $\sim 50 \mu\text{m}$). In [Figure 1\(f\) and \(g\)](#), we show the photoluminescence
30 ($\mu\text{-PL}$) peak intensity and position mapping images obtained from this typical microscopic triangular flake. The
31 PL peak amplitude, position and linewidth are quite homogenous, suggesting a high crystallinity of the alloy. The
32 only sizeable variations in PL intensity and energy position on the maps relates to the defective edges of the
33 monocrystal (i.e., chalcogens vacancies in the W-zz edges⁴³). Small signatures of cracks are also visible (white
34 arrows), starting at the edges and propagating towards the center of the flake following a 3-fold symmetry. We
35 observe that these cracks can induce local small strain variation region and reduce locally the PL intensity, as
36 previously reported⁴². From the PL energy position, we determine the optical band gap of this ternary alloy $E_g =$
37 1.88 eV . Then, the composition of the alloy is estimated using a simple mixing law⁴⁵ $E_g = xE_{g(\text{WS}_2)} + (1 -$
38 $x)E_{g(\text{WSe}_2)}$. The obtained alloy composition $x = S/(S+\text{Se}) = 0.70$ corresponds to $\text{WS}_{1.4}\text{Se}_{0.6}$. The PL peak position of
39 the edges present a shift of 30 meV toward the higher energies ([Figure 1\(h\), point 1](#)) indicating a higher strain level at the W-
40 zz edges and probably a higher presence of Se or S vacancies⁴³. In [Figure S2](#), we show the composition dependent μ -
41 Raman spectra (532nm laser, room-temperature), from three different monolayers (WSe_2 , WS_2 and $\text{WS}_{1.4}\text{Se}_{0.6}$). For
42 pure WSe_2 , the $^{\text{WSe}_2}\text{A}_{1\text{g}(\text{Se-W})}$ and $^{\text{WSe}_2}\text{E}_{2\text{g}(\text{Se-W})}$ modes are superposed at 249.5 cm^{-1} and the typical in-plane TA
43 phonon mode appears at 250.7 cm^{-1} . These phonon mode positions are analogous to those reported in a preceding
44 experimental study.⁴⁶ For the pure WS_2 phase, the $^{\text{WS}_2}\text{A}_{1\text{g}(\text{S-W})}$ and $^{\text{WS}_2}\text{E}_{2\text{g}(\text{S-W})}$ mode positions are separate at 417.6
45 cm^{-1} and 350.6 cm^{-1} , respectively. The Raman spectra collected from the WSSe single layer is more complex and
46 displays five main modes³². The first three are modes from the binaries: $\text{A}_{1\text{g}(\text{S-W})}$ mode (412.1 cm^{-1}), $\text{E}_{2\text{g}(\text{Se-W})}$ or
47 $\text{A}_{1\text{g}(\text{Se-W})}$ modes (262.8 cm^{-1}), $\text{E}_{2\text{g}(\text{S-W})}$ mode (324.7 cm^{-1}). These are all marginally upshifted from pure WSe_2 and
48 slightly downshifted from pure WS_2 ⁴⁷. Next, we find specific modes which are only observed in WSSe alloys⁴⁸,
49
50
51
52
53
54
55
56
57
58
59
60

$A_{1g(S-W-Se)}$ (385.6 cm^{-1}) and the combined $E_{2g(S-W)} - LA_{(S-W)} + A_{1g(Se-W)} - LA_{(Se-W)}$ mode (159.8 cm^{-1}) which mixes LA phonons and Raman modes. The observation of these ternary-specific Raman modes is coherent with the PL result and their relative position with respect to reference data confirms the ternary nature and the composition of the $WS_{1.4}Se_{0.6}$ alloy⁴⁹. More information at the atomic scale are given by the high-resolution scanning transmission electron microscopy (HRSTEM) image (Supporting Information Figure S3) where, thanks to the Z-contrast (Z = atomic number), we can clearly recognize the hexagonal organization of the alternative W and S/Se atoms in each unit (green dashed lines). The homogeneous and brightest spots represent the W atoms ($Z=74$, light blue circle on the image), the S/Se atoms appear darker ($Z=16$ and $Z=34$, respectively). Three level of brightness are present on the image: the dimmest spots representing the S atoms on top of S atoms (S+S atoms, yellow circle), the relative bright spots the S atoms on top of Se atoms (S+Se, red circle) and the even brighter spots the Se atoms on top of Se ones (Se+Se, purple circle). Due to the ternary alloy nature of $WS_{2(1-x)}Se_{2x}$ sample, each chalcogen position in the TEM projection (0001) actually consists in the superposition of two atoms, of which each can either be S or Se.

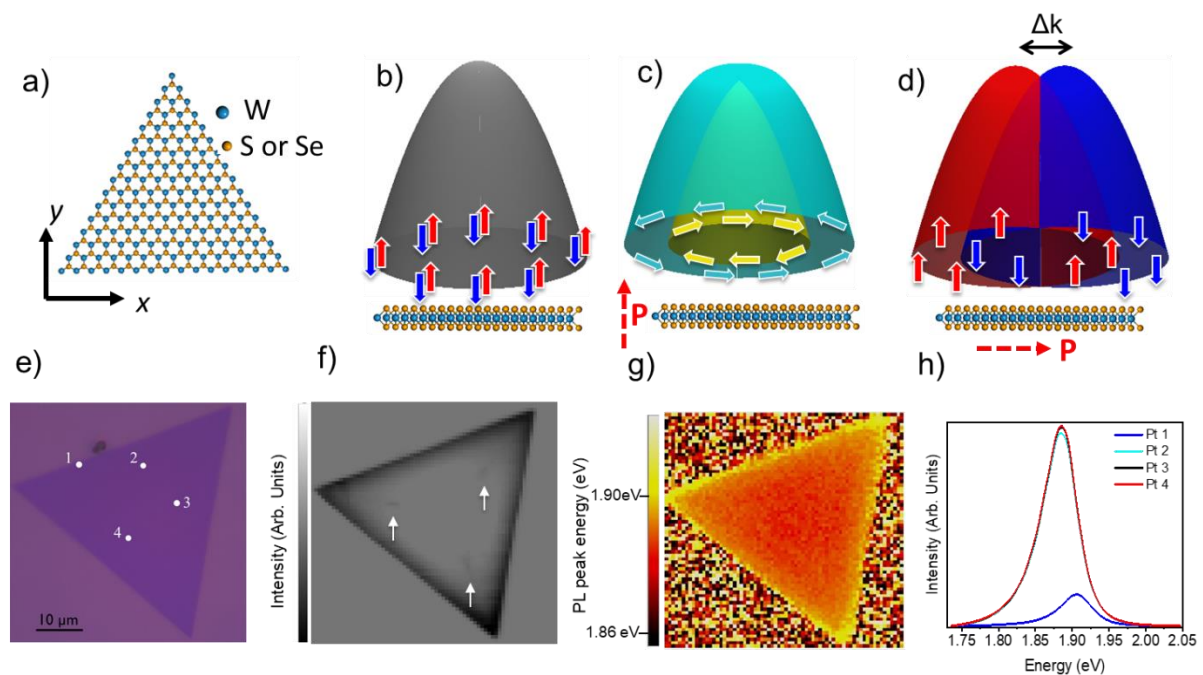


Figure 1: Structural and optical properties of $WS_{1.4}Se_{0.6}$ alloy. (a) Top view of a monolayer $WS_{1.4}Se_{0.6}$ alloy. (b), (c) and (d) Possible band splitting types in momentum space originating in the valence band of a semiconductor from different spin-orbit field orientations. In a two-dimensional electron system, the conventional (c) and out-of-plane Rashba spin splitting (d) appear under the out-of-plane and in-plane polarization, respectively. (e) Optical image, (f) PL intensity map and associated PL peak position map (g). (h) Individual PL (Pt1-Pt4) spectra, acquired at spatial positions (#1-4) in the optical image (e).

Recent calculations have predicted for non-Janus MSeTe and MSSe (M=W or Mo) MLs the presence of a giant in-plane spontaneous electric polarization, with WSSe having the largest one³⁸. However, no experimental evidence of such property is present in literature for $WS_{2(1-x)}Se_{2x}$ alloys. To experimentally measure both the electrical polarization and its effect on the band structure, we perform Piezoelectric Force Microscopy (PFM) coupled to angle resolved photoemission spectroscopy with a nanometric x-ray beam at the synchrotron facility (nano-ARPES). To this end, the $WS_{1.4}Se_{0.6}$ flakes were transferred on a conductive graphene/SiC substrate³¹ which avoids sample charging effects but also prevent additional stressing or straining on the layer material. Lateral PinPoint™ mode Dual Frequency Resonance Tracking (DFRT) PFM images acquired using a Conductive Diamond Coated Tip are shown in figure 3 (Figure 3(a) topography and 3(b) PFM amplitude). Unlike Janus TDMs³¹, $WS_{1.4}Se_{0.6}$ alloy does not present any vertical piezoelectric response. Instead, as shown by figure 3 (b) a clear intrinsic in plane piezoelectric response is present. Combined with the characteristic hysteresis loops observed for both PFM amplitude and phase as a function of applied dc electric field (Supporting Information Figure S5), this response is a signature of a in plane polarization³⁸. For parallel comparison, cross-sections along the red lines in both images are compared. The topography shows a relatively homogeneous area with the presence of few wrinkles. In the homogenous parts a clear piezoelectric amplitude of about $180 \pm 10 \mu\text{V}$ is present. Note that the PFM amplitude is lower near the wrinkled zone, which proves that the measured in-plane polarization value relates to an intrinsic material property and are not associated to large scale topological defects.

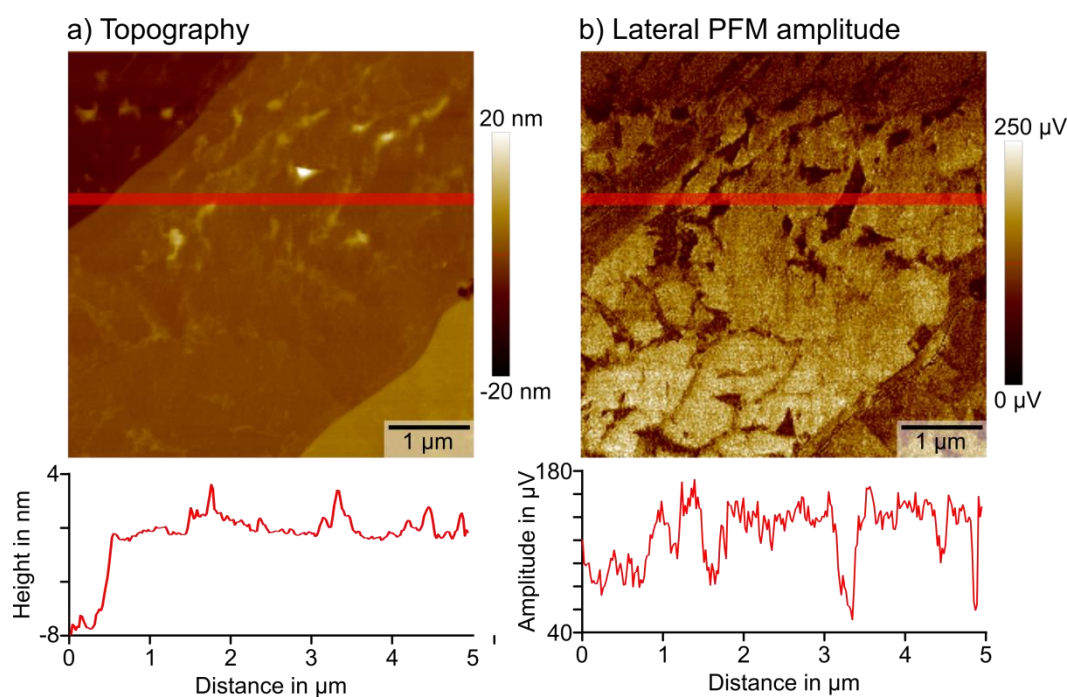


Figure 2: Characterization of in plane piezoelectricity in the $WS_{1.4}Se_{0.6}$ alloy: (a) Topography and (b) piezoelectric amplitude (b) of an isolated $WS_{1.4}Se_{0.6}$ monolayer transferred on a graphene/SiC substrate. The layer is uniform in most areas, and shows clear in-plane piezoelectric contrast, except in the area of wrinkles. In the bottom of each image, cross-sections along the red lines are compared at the same tip position.

To directly probe the effect of the measured in-plane polarization on the electronic structure modulations of the $\text{WS}_{2(1-x)}\text{Se}_{2x}$ alloy, we conduct nano-angle resolved photoemission (nano-ARPES, see Methods) experiments^{52,53}. In Figure 3, we compare the electronic structure of a reference binary TMDs monolayer, WS_2 (see corresponding PL and Raman data in Supporting Information Figure S4) with that of a ternary $\text{WS}_{1.4}\text{Se}_{0.6}$ alloy along the ΓK direction (corresponding to W - zz edge direction in the real space, see Supporting Information Figure S6). The sharpness of all the measured bands is indicative of the high crystalline quality of the two samples. For both WS_2 and $\text{WS}_{1.4}\text{Se}_{0.6}$, the top of the valence band at the K point is mostly formed by in-plane d_{xy} and $d_{x^2-y^2}$ orbital of tungsten, while at the Γ point the valence band is mostly composed by d_{z^2} orbitals of tungsten and p_z orbitals of the chalcogen⁵⁴. For the WS_2 , the valence band maximum (VBM) at the K point ($E_K^{\text{WS}_2} = -1.70$ eV respect the Fermi level) is higher than the Γ point valence band ($\Delta_{K\Gamma}^{\text{WS}_2} = -0.20$ eV), Figure 3(a)^{55,56}. The spin-orbit energy splitting of the valence band at the K point, which mainly originates from the hybridization between the metal $d_{x^2-y^2} + d_{xy}$ and chalcogen $p_x + p_y$ bonding states, is about 420 meV⁵⁷⁻⁶⁰. For the $\text{WS}_{1.4}\text{Se}_{0.6}$ alloy, Figure 3(b), the VBM is also located at the K point, specifically at $E_K^{\text{WSSe}} = -1.40$ eV respects the Fermi level and is $\Delta_{K\Gamma}^{\text{WSSe}} = -0.41$ eV higher than the top of the valence band at the Γ point. We also measure spin-orbit splitting at the K point is 440 meV. From these measurements, we compute, for the $\text{WS}_{1.4}\text{Se}_{0.6}$ alloy a hole effective mass of 0.5 m_e (upper band) and 0.7 m_e (lower band), with m_e is the free electron mass at K point. The VBM position at the K point, as underlined by our density functional theory (DFT) calculations (blue dash lines in Figure 3(c-d)) suggests a direct band gap nature of monolayer $\text{WS}_{1.4}\text{Se}_{0.6}$ alloy⁶¹ as for the standards TMDs materials.

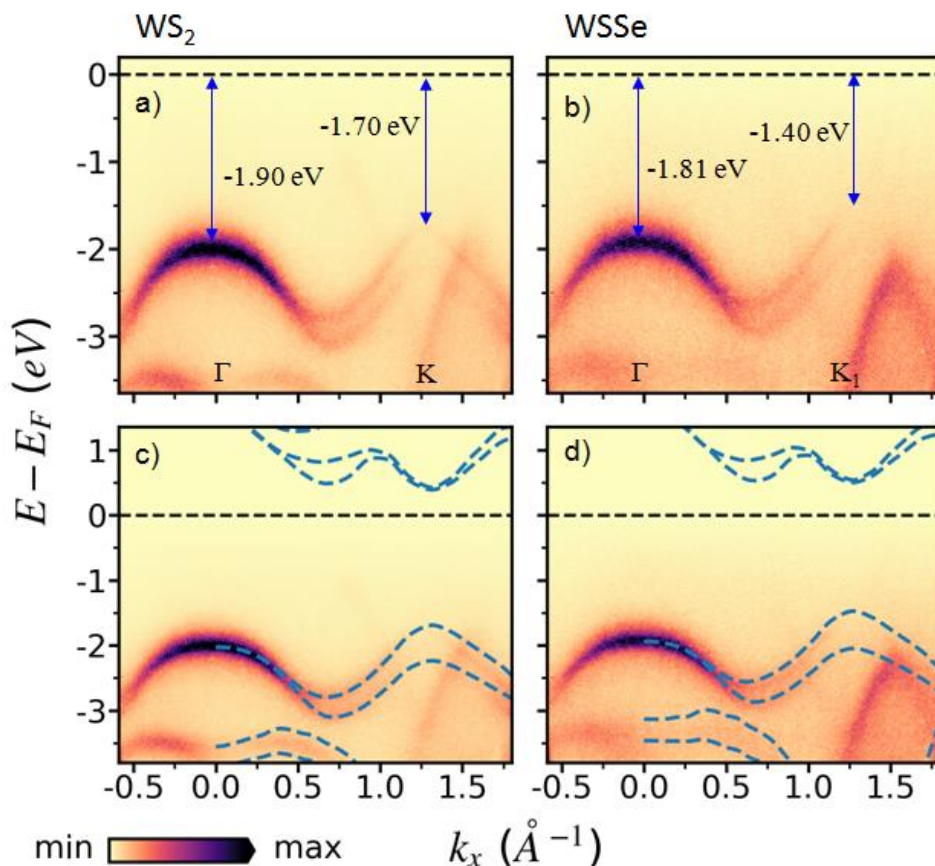


Figure 3: Comparison between nano-ARPES map of WS₂ and WS_{1.4}Se_{0.6} along the Γ K direction: nano-ARPES map of single layer WS₂ (a) and WS_{1.4}Se_{0.6} (b) along the Γ K direction. (c) and (d) shows DFT calculations of valence and conduction bands superposed on the experimental data from parts (a) and (b) as blue dotted lines.

Figure 4 display the ARPES 3D and 2D mapping in k -space for the WS₂ and WS_{1.4}Se_{0.6}, respectively. The WS₂ electronic structure (Figure 4(a)) is well described by a single paraboloid centred at the Γ point, and its cuts along the Γ -K (Figures 4(b)) and Γ -M directions (Figures 4(c)) clearly indicates a sharp parabolic profile. On the opposite, the WS_{1.4}Se_{0.6} electronic structure (Figures 4(d-f)) is composed by two paraboloids shifted in one direction of the k -space by constant vector (Δk_R). This vector is found to perfectly align with a specific direction of the BZ (named M₁- Γ -M₁, see insert panel of Figure 4(d)). This anisotropic electronic structure is of different symmetry respect the WS₂. The C_{3v} rotational symmetry is lost and the number of symmetry plane is reduced to a single one, along the direction perpendicular to Δk_R (see dashed line in the insert panel of Figure 4(d)) and which contains a specific pair of K and K' points (named as K₁ and K'₁). Along K'₁- Γ -K₁ direction (Figure 4(e)) the projection is that of a single parabolic band shape, but actually consists in the superposition of two distinct paraboloids. Along M₁- Γ -M₁ direction (Figure 4(f)) we now distinguish each of the two parabolic bands, well separated in the k -space. An additional representation of these paraboloids is reported in Figure 5, where we show a stack of iso-energy slices, cutting the full tridimensional structure of the band at regular energy intervals. We confirm that only a single paraboloid is observed for WS₂, while WS_{1.4}Se_{0.6} exhibits split paraboloids. We assign the observed split in WS_{1.4}Se_{0.6} as a the signature of a unidirectional Rashba spin splitting (see Figure 1(d)), driven by an in-plane electric field directed along the K'₁- Γ -K₁ direction⁶², which breaks the spin degeneracy observed in WS₂. In turn, the existence of such electric field can be ascribed to a unidirectional in -plane polarization present in the WS_{1.4}Se_{0.6} alloy.. This peculiar field orientation could be related to possible local ordered configuration present in the WS_{1.4}Se_{0.6} alloy. From the point of view of application, the observed Rashba spin splitting is described by a momentum offset (Δk_R) away from the crossing point of 0.095 Å and a corresponding energy offset (ΔE_R) of 0.15 eV (see Figure 4(f) and Supporting Information Figure S7). Our analysis shows that the out-of-plane Rashba spin splitting is due to a large in-plane spontaneous polarization in WS_{2(1-x)Se_{2x}} alloy with a Rashba parameter of 2.8 ± 0.7 eV Å which are among the first giant Rashba spin splitting size parameters reported in the single layer of 2D materials. This Rashba parameter is high in comparison with the theoretically reported for janus WSSe monolayers, $\alpha_R \sim 0.005$ eV·Å^{63,64}. However, other recent calculations have shown that such Rashba parameters computed through DFT may vary by one or two order of magnitude with extremely small strain³⁶. This Rashba parameter even compares favorably to standard InGaAs/GaAs quantum dots, $\alpha_R \sim 0.08 - 0.12$ eV·Å,⁶⁵ heavy metal films including the Au(111) surface ($\alpha_R = 0.33$ eV·Å)⁶⁶ and Au/W(110) quantum well ($\alpha_R = 0.16$ eV·Å)⁶⁷. Our 2D Giant Rashba effect is also same order than the recently reported for bulk BiTeI²⁴ and of the same order of the giant Rashba spin splitting observed in bulk α -GeTe⁶⁸. Such a remarkably large Rashba parameter can significantly improve the spin-charge conversion in spintronic devices^{69,70}.

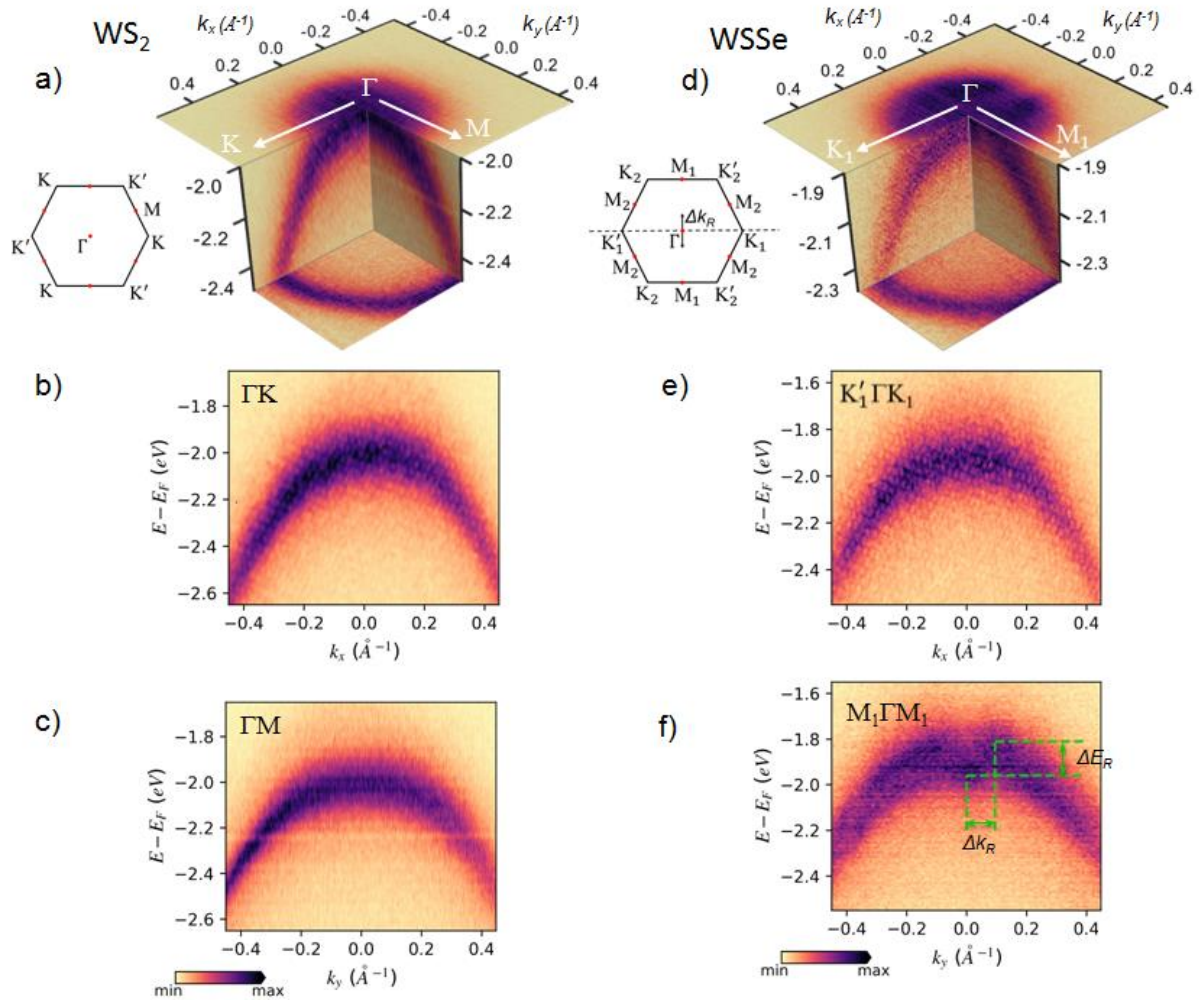


Figure 4: Comparison between nano-ARPES map of WS_2 and $WS_{1.4}Se_{0.6}$ at the Γ point: (a) ARPES 3D mapping in k -space and the related BZ in the insert, cuts along (b) Γ -K and (c) Γ -M high symmetry directions for WS_2 . (d) ARPES 3D mapping in k -space and the related BZ in the insert, cuts along (e) K'_1 - Γ - K_1 and (f) M_1 - Γ - M_1 high symmetry directions for $WS_{1.4}Se_{0.6}$.

We briefly discuss the origin of the in-plan polarization. Standard hexagonal WS_2 monolayers obeys the 3m point group symmetry, which gives rise to non-null elements of the piezoelectric tensor due to the lack of symmetry along the armchair directions. However, the piezoelectric tensor coefficients are zero for the zigzag directions (i.e. parallel to zigzag edges of the crystal structure) due to existing inversion symmetry along these lines. As the Γ -K directions in reciprocal space align with the zigzag directions in real space, the zero coefficients of the piezoelectric tensor impose an absence of polarization along the Γ -K directions of the WS_2 band structure. In the ternary alloy WSSe monolayer, this ideal symmetric configuration is disrupted by the difference in atomic sizes and electronegativities between S and Se atoms. In an idealized TMD ternary random alloy, the chemical nature of the chalcogen atoms is fully independent of its neighbors. Still, the replacement of one site of chalcogen (say S) with another chalcogen atom (say Se) of different atomic radii, will change the local distances to the hexagonal W sublattice sandwiched in between the S and Se layers and break down the symmetry of the binary TMDs system. This local symmetry breaking gives rise to finite piezoelectric coefficients along arbitrary orientations. The strain

1
2
3 relaxation of such randomly distributed ternary alloy thus gives rise to a distorted crystal structure, in which in-
4 plane electric fields can appear and generate the unidirectional Rashba SOC (see Supporting Information section
5 VII). As these dipoles may exist anywhere inside the $WS_{1.4}Se_{0.6}$ crystal, including the previously field-free the zig-
6 zag (real space) or Γ -K (reciprocal space) directions, it is possible to generate the observed unidirectional Rashba
7 SOC along Γ -M.
8
9

10 In practice, real ternary material often exhibits a more complex structure in which chemical fluctuations are
11 spatially correlated. Several studies concerning TMDs alloys⁷¹⁻⁷³ have demonstrated that fluctuations along the
12 growth direction can lead to ordered configurations in the form of atomic chains oriented parallel to the flake edges
13 (i.e. zigzag directions), akin to ordering observed in the epitaxy of 3D bulk crystals⁷⁴. These chemically ordered
14 configurations of the 2D alloy are mostly generated by the interplay between local lattice distortion and long-range
15 strain interactions. Similarly to the idealized random alloy, the different sizes of the S and Se atoms, and their
16 different electronegativity, will create macroscopic strain (as shown by PL) and local electric dipoles (as shown
17 by PFM). However due to 2D ordering in the ternary alloy (i.e. spatial chemical correlations), the in-plane
18 component of the electrical field may be stronger in particular crystal directions. Here, the local in-plane electric
19 field aligns along a Γ -K direction, i.e. along the zigzag edges, which is perpendicular to the expected growth
20 direction. Ordering in the ternary alloy may thus link the final crystal shape to the in-plane electrical dipole
21 orientation and the particular Γ -M orientation of the unidirectional Rashba SOC observed in our sample. In
22 summary, the alloying process first allows the presence of an in-plane field, while its ordering may favor particular
23 crystal orientation, resulting in the observed Rashba SOC along the specific Γ -M direction. The presence of this
24 dipole provides a 2D platform to study light-matter interactions where dipole orientation is critical, such as dipole-
25 dipole correlations and strong coupling with plasmonic structures.
26
27
28
29
30
31
32
33
34
35
36
37
38
39
40
41
42
43
44
45
46
47
48
49
50
51
52
53
54
55
56
57
58
59
60

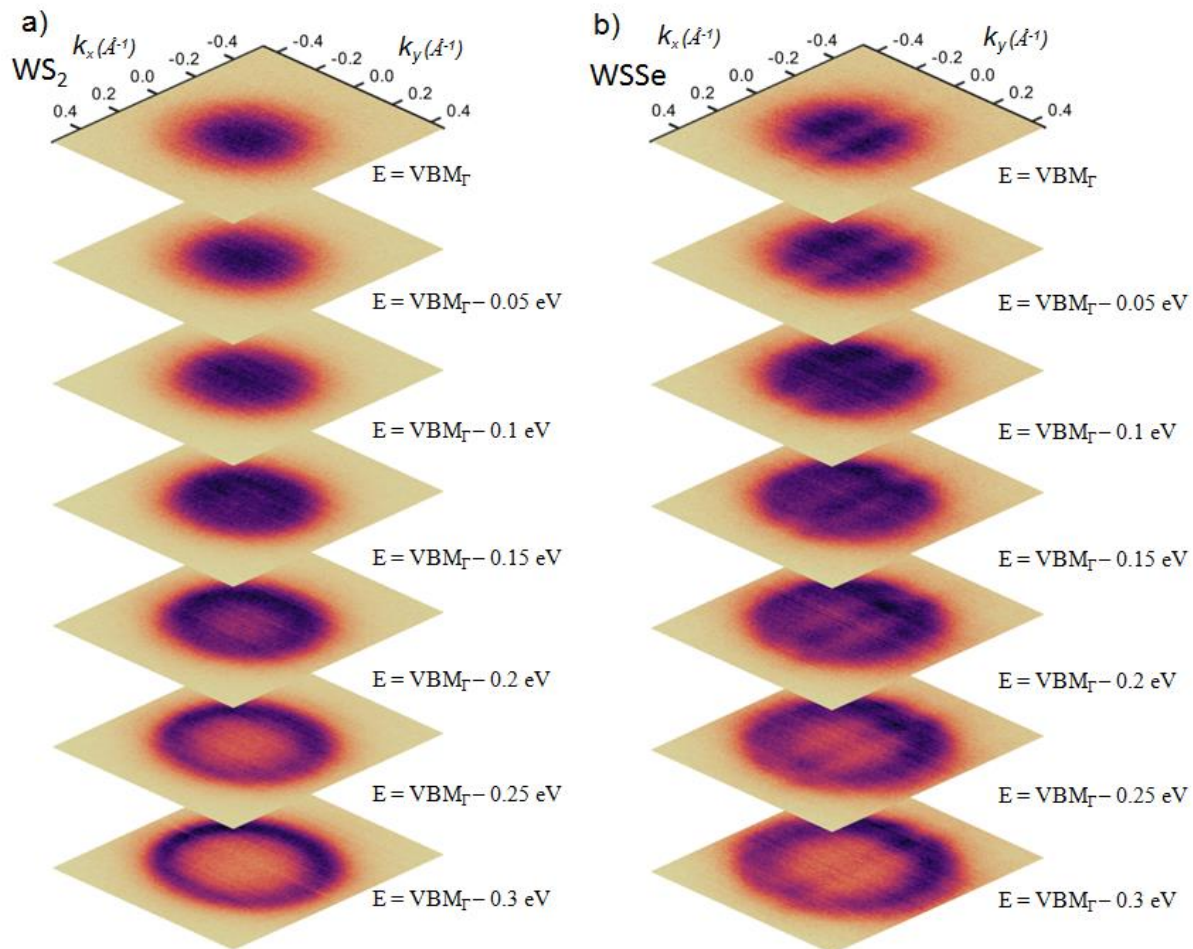


Figure 5: Comparison between 3D nano-ARPES map of WS_2 and $WS_{1.4}Se_{0.6}$: Iso-energy contours of WS_2 (a) and $WS_{1.4}Se_{0.6}$ (b) of the VBM at the Γ point and different cuts below this point.

In conclusion, we investigate the electronic properties of $WS_{2(1-x)}Se_{2x}$ monocrystals of monolayer thickness. We find that $WS_{1.4}Se_{0.6}$ gives rise to sharp and well-defined bands showing a giant out-of-plane Rashba effect. Considering that the monolayer $WS_{1.4}Se_{0.6}$ is stable in air, despite being only a monolayer thick, it can seamlessly assembled with different rotation angles with other 2D material of different kind allowing an easily band engineering through tunable moiré super lattices⁵³ and strain^{75,76}. This band engineering could allow the valence band maximum of the system to be moved from the K point to the Γ point, in order to obtain well isolated Rashba spin splitting state. Moreover, due to the semiconducting nature of the ternary alloy, the Fermi level can be easily tuned to cross this bands *via* doping⁷⁷ or a gate, providing exciting opportunities to fabricate electrically controllable spintronics devices. We expect that the present observations of a giant out-of-plane Rashba spin splitting induced by an in-plane electrical polarization can also be achieved in other 2D alloyed TMDs, which share similar structural and electronic properties. The coexistence of unidirectional Rashba spin splitting (out-plane spin direction) and band splitting at the K and K' valleys (out-of-plane spin direction) also makes WSSe interesting for valleytronics. Thus, our findings open up new avenues for exploring exotic electrical and optical phenomena in 2D materials systems, as well as novel spintronic devices driven by the Rashba effect.

Methods

Growth of $WS_{1.4}Se_{0.6}$. The $WS_{1.4}Se_{0.6}/SiO_2/Si$ monocrystals were grown through a one-step chemical vapor deposition (CVD) process⁴¹. At the beginning, 1000 SCCM pure Ar gas was introduced into the system for 10 minutes to ensure a stable chemical reaction environment. Then, the center temperature of the furnace was heated to 1100 °C for 10 minutes and the rate of Ar gas flow was set to 100 SCCM to obtain $WS_{1.4}Se_{0.6}$ monocrystals. The as-prepared sample were transferred onto the graphene/SiC. Before any measurement, the samples were annealed at 250 °C in ultrahigh vacuum, in order to remove any residual surface contaminations left by the wet⁷⁸.

PFM measurement: Lateral dual frequency resonance tracking (DFRT) piezoelectric force microscopy (PFM) in PinPoint™ mode was measured on a NX10 AFM (Park Systems, Suwon, Korea) with a Zurich Instruments (Zurich, Switzerland) HF2 lock-in amplifier (LIA) via a conductive diamond-doped CDT-CONTR cantilever (Nanosensors, Neuchatel, Switzerland). PinPoint™ mode was used for topography imaging by performing fast force spectroscopy curves (30 μ m/s for approach and retract) at each pixel. Once the force setpoint is reached at the lower turning point of the spectroscopy curve, the average lateral PFM signal was collected over a period of 10 ms. For DFRT PFM, an AC sample voltage was applied via the Zurich Instruments HF2 LIA and swept over a frequency range of 300 -500 kHz to identify the lateral contact resonance at ~380 kHz. The two sidebands for the frequency tracking were generated at ± 2 kHz with 2 V AC excitation. During the scan, the DFRT feedback kept the amplitude ratio of both sidebands constant by readjusting the AC frequency to match the lateral contact resonance. The DFRT PFM signals were fed back into the atomic force microscopy (AFM) controller using the auxiliary outputs of the HF2 LIA and the auxiliary inputs on the AFM controller.

Photoluminescence and Nano-ARPES measurements: Photoluminescence (PL) measurements were conducted using a commercial confocal Horiba micro-Raman microscope with an objective focused 532 nm laser in an ambient environment at room temperature⁴¹. The Nano-ARPES measurements were performed at the ANTARES beamline of Synchrotron SOLEIL. The ARPES data were taken at a photon energy of 100 eV, spot size of about 500 nm, using linearly polarized light at a base pressure of 5×10^{-11} mbar⁷⁸.

DFT simulations: Band structures calculations were obtained by means of the QUANTUM ESPRESSO suite⁷⁹. We used a fully relativistic pseudopotential and non-collinear simulations to consider the spin-orbit interaction. For the exchange-correlation term we considered the HSE hybrid functional⁸⁰ to better estimate the band-gap energy. The self-consistent solution was obtained by adopting a 15x15x1 Monkhorst-Pack grid and a cutoff energy of 50 Ry. A vacuum space of 20 Å along the vertical direction was used to minimize the interaction between two adjacent sheets. Cell parameters and atomic positions were relaxed according to a convergence threshold for forces and energy of 10^{-3} and 10^{-4} (a.u.), respectively. The $WS_{1.4}Se_{0.6}$ alloy was modeled within the virtual crystal approximation by using a chalcogen pseudopotential given by a linear interpolation of the pseudopotentials for S and Se. The use of the VCA in the context of plane-wave DFT using pseudopotentials is justified when the atoms composing the alloy are similar and when the pseudopotentials use the same number of valence orbitals for each angular momentum, as in the case of S and Se. Recently, the VCA method has been successfully employed in simulating the electronic properties of transition metal chalcogenide alloys^{81,82}.

Data availability: The data sets generated during and/or analyzed during the current study are available from the corresponding author on reasonable request.

Competing interests: The authors declare no competing interests.

Contributions: B.Z. and A.P. fabricated the samples and carried TEM measurement. J.Z. D.P., A.O., and J.A., carried out the nano-XPS/nano-ARPES experiments. J.C., C.E., L.K., characterized the samples by means of μ -Raman/PL spectroscopy and analyzed the Raman/PL data. I. H, carried the PFM measurement. M.P. carried the DFT calculation. J.Z., F.B., J.A., D.P., F.O., A.O., and E.L. analyzed the data. All the authors discussed the results and commented on the manuscript.

ACKNOWLEDGMENTS: We acknowledge the financial support by MagicValley (ANR-18-CE24-0007), Graskop (ANR-19-CE09-0026), 2D-on-Demand (ANR-20-CE09-0026), and MixDferro (ANR-21-CE09-0029) grants, the French technological network RENATECH, the National Natural Science Foundation of China (Nos. U19A2090 and 62090035), the China Postdoctoral Science Foundation (No. 2020M680112), and the Science and Technology Innovation Program of Hunan Province (No. 2020RC2028).

REFERENCES

1. Duan, X. *et al.* Lateral epitaxial growth of two-dimensional layered semiconductor heterojunctions. *Nat. Nanotechnol.* **9**, 1024–1030 (2014).
2. Radisavljevic, B., Radenovic, A., Brivio, J., Giacometti, V. & Kis, A. Single-layer MoS₂ transistors. *Nat. Nanotechnol.* **6**, 147–150 (2011).
3. Özçelik, V. O., Azadani, J. G., Yang, C., Koester, S. J. & Low, T. Band alignment of two-dimensional semiconductors for designing heterostructures with momentum space matching. *Phys. Rev. B* **94**, 035125 (2016).
4. Duan, X., Wang, C., Pan, A., Yu, R. & Duan, X. Two-dimensional transition metal dichalcogenides as atomically thin semiconductors: Opportunities and challenges. *Chem. Soc. Rev.* **44**, 8859–8876 (2015).
5. Duerloo, K. A. N., Ong, M. T. & Reed, E. J. Intrinsic Piezoelectricity in Two-Dimensional Materials. *J. Phys. Chem. Lett.* **3**, 2871–2876 (2012).
6. Zhu, H. *et al.* Observation of piezoelectricity in free-standing monolayer MoS₂. *Nat. Nanotechnol.* **2014** *102* **10**, 151–155 (2014).
7. Rivera, P. *et al.* Observation of long-lived interlayer excitons in monolayer MoSe₂-WSe₂ heterostructures. *Nat. Commun.* **6**, 6242 (2015).
8. Zeng, Q. *et al.* Band Engineering for Novel Two-Dimensional Atomic Layers. *Small* **11**, 1868–1884 (2014).
9. Wakamura, T. *et al.* Spin-orbit interaction induced in graphene by transition metal dichalcogenides. *Phys. Rev. B* **99**, 1–12 (2019).
10. Gong, Y. *et al.* Vertical and in-plane heterostructures from WS₂/MoS₂ monolayers. *Nat. Mater.* **13**, 1135–1142 (2014).
11. Huang, C. *et al.* Lateral heterojunctions within monolayer MoSe₂-WSe₂ semiconductors. *Nat. Mater.* **13**, 1096–1101 (2014).
12. Sahoo, P. K., Memaran, S., Xin, Y., Balicas, L. & Gutiérrez, H. R. One-pot growth of two-dimensional lateral heterostructures via sequential edge-epitaxy. *Nature* **553**, 63–67 (2018).
13. Li, M.-Y. *et al.* Epitaxial growth of a monolayer WSe₂-MoS₂ lateral p-n junction with an atomically sharp interface. *Science (80-.)*. **349**, 524–528 (2015).
14. Zhang, Z. *et al.* Robust epitaxial growth of two-dimensional heterostructures, multiheterostructures, and superlattices. *Science (80-.)*. **357**, 788–792 (2017).
15. Yang, T. *et al.* Van der Waals epitaxial growth and optoelectronics of large-scale WSe₂/SnS₂ vertical bilayer p-n junctions. *Nat. Commun.* **8**, 1906 (2017).
16. Li, D., Wang, B., Chen, M., Zhou, J. & Zhang, Z. Gate-Controlled BP-WSe₂ Heterojunction Diode for Logic Rectifiers and Logic Optoelectronics. *Small* **13**, 1603726 (2017).

17. Xu, H. *et al.* High Detectivity and Transparent Few-Layer MoS₂/Glassy-Graphene Heterostructure Photodetectors. *Adv. Mater.* **30**, 1706561 (2018).
18. Splendiani, A. *et al.* Emerging photoluminescence in monolayer MoS₂. *Nano Lett.* **10**, 1271–5 (2010).
19. Eda, G. *et al.* Photoluminescence from Chemically Exfoliated MoS₂. *Nano Lett.* **11**, 5111–5116 (2011).
20. Shanavas, K. V. & Satpathy, S. Effective tight-binding model for MX_2 under electric and magnetic fields. *Phys. Rev. B* **91**, 235145 (2015).
21. Yuan, H. *et al.* Zeeman-type spin splitting controlled by an electric field. *Nat. Phys.* **9**, 563–569 (2013).
22. Cheng, C., Sun, J.-T., Chen, X.-R., Fu, H.-X. & Meng, S. Nonlinear Rashba spin splitting in transition metal dichalcogenide monolayers. *Nanoscale* **8**, 17854–17860 (2016).
23. Wu, S. *et al.* Electrical tuning of valley magnetic moment through symmetry control in bilayer MoS₂. *Nat. Phys.* **9**, 149–153 (2013).
24. Ishizaka, K. *et al.* Giant Rashba-type spin splitting in bulk BiTeI. *Nat. Mater.* **10**, 521–526 (2011).
25. Soumyanarayanan, A., Reyren, N., Fert, A. & Panagopoulos, C. Emergent phenomena induced by spin-orbit coupling at surfaces and interfaces. *Nature* vol. 539 509–517 (2016).
26. Manchon, A., Koo, H. C., Nitta, J., Frolov, S. M. & Duine, R. A. New perspectives for Rashba spin-orbit coupling. *Nat. Mater.* **14**, 871–882 (2015).
27. Datta, S. & Das, B. Electronic analog of the electro-optic modulator. *Appl. Phys. Lett.* **56**, 665–667 (1990).
28. Edelstein, V. M. Spin polarization of conduction electrons induced by electric current in two-dimensional asymmetric electron systems. *Solid State Commun.* **73**, 233–235 (1990).
29. Lee, K., Yun, W. S. & Lee, J. D. Giant Rashba-type splitting in molybdenum-driven bands of MoS₂ / Bi(111) heterostructure. **125420**, 1–5 (2015).
30. Shao, Q. *et al.* Strong Rashba-Edelstein Effect-Induced Spin – Orbit Torques in Monolayer Transition Metal Dichalcogenide/Ferromagnet Bilayers. (2016) doi:10.1021/acs.nanolett.6b03300.
31. Lu, A.-Y. *et al.* Janus monolayers of transition metal dichalcogenides. *Nat. Nanotechnol.* **12**, 744–749 (2017).
32. Duan, X. *et al.* Synthesis of WS_{2-x}Se_{2-2x} Alloy Nanosheets with Composition-Tunable Electronic Properties. *Nano Lett.* **16**, 264–269 (2016).
33. Li, H. *et al.* Growth of Alloy MoS_{2-x}Se_{2(1-x)} Nanosheets with Fully Tunable Chemical Compositions and Optical Properties. *J. Am. Chem. Soc.* **136**, 3756–3759 (2014).
34. Hu, T. *et al.* Intrinsic and anisotropic Rashba spin splitting in Janus transition-metal dichalcogenide monolayers. *Phys. Rev. B* **97**, 235404 (2018).
35. Cheng, Y. C., Zhu, Z. Y., Tahir, M. & Schwingenschlögl, U. Spin-orbit-induced spin splittings in polar transition metal dichalcogenide monolayers. *EPL (Europhysics Lett.)* **102**, 57001 (2013).
36. Yao, Q.-F. *et al.* Manipulation of the large Rashba spin splitting in polar two-dimensional transition-metal dichalcogenides. *Phys. Rev. B* **95**, 165401 (2017).
37. Li, F. *et al.* Intrinsic Electric Field-Induced Properties in Janus MoSSe van der Waals Structures. *J. Phys. Chem. Lett.* **10**, 559–565 (2019).
38. Abbas, H. G., Debela, T. T., Hahn, J. R. & Kang, H. S. Multiferroicity of Non-Janus MXY (X = Se/S, Y = Te/Se) Monolayers with Giant In-Plane Ferroelectricity. *J. Phys. Chem. C* **125**, 7458–7465 (2021).
39. Cui, C., Xue, F., Hu, W. J. & Li, L. J. Two-dimensional materials with piezoelectric and ferroelectric functionalities. *npj 2D Mater. Appl.* **2018 21** **2**, 1–14 (2018).
40. Dong, L., Lou, J. & Shenoy, V. B. Large In-Plane and Vertical Piezoelectricity in Janus Transition Metal Dichalcogenides. *ACS Nano* **11**, 8242–8248 (2017).
41. Ernandes, C. *et al.* Indirect to direct band gap crossover in two-dimensional WS_{2(1-x)}Se_{2x} alloys. *npj 2D Mater. Appl.* **5**, 1–7 (2021).
42. Ly, T. H., Yun, S. J., Thi, Q. H. & Zhao, J. Edge Delamination of Monolayer Transition Metal Dichalcogenides. *ACS Nano* **11**, 7534–7541 (2017).
43. Wang, S. *et al.* Shape Evolution of Monolayer MoS₂ Crystals Grown by Chemical Vapor Deposition. *Chem. Mater.* **26**, 6371–6379 (2014).
44. Deng, Q. *et al.* Impact of Polar Edge Terminations of the Transition Metal Dichalcogenide Monolayers during Vapor Growth. *J. Phys. Chem. C* **122**, 3575–3581 (2018).
45. Duan, X. *et al.* Synthesis of WS_{2-x}Se_{2-2x} Alloy Nanosheets with Composition-Tunable Electronic Properties. *Nano Lett.* **16**, 264–269 (2016).
46. Tangi, M. *et al.* Band Alignment at GaN/Single-Layer WSe₂ Interface. *ACS Appl. Mater. Interfaces* **9**, 9110–9117 (2017).
47. Zhao, W. *et al.* Lattice dynamics in mono- and few-layer sheets of WS₂ and WSe₂. *Nanoscale* **5**, 9677–9683 (2013).
48. Wang, H. *et al.* Two-dimensional heterostructures: fabrication, characterization, and application. *Nanoscale* **6**, 12250–12272 (2014).

- 1
 - 2
 - 3
 - 4
 - 5
 - 6
 - 7
 - 8
 - 9
 - 10
 - 11
 - 12
 - 13
 - 14
 - 15
 - 16
 - 17
 - 18
 - 19
 - 20
 - 21
 - 22
 - 23
 - 24
 - 25
 - 26
 - 27
 - 28
 - 29
 - 30
 - 31
 - 32
 - 33
 - 34
 - 35
 - 36
 - 37
 - 38
 - 39
 - 40
 - 41
 - 42
 - 43
 - 44
 - 45
 - 46
 - 47
 - 48
 - 49
 - 50
 - 51
 - 52
 - 53
 - 54
 - 55
 - 56
 - 57
 - 58
 - 59
 - 60
 - 61
 - 62
 - 63
 - 64
 - 65
 - 66
 - 67
 - 68
 - 69
 - 70
 - 71
 - 72
 - 73
 - 74
 - 75
 - 76
 - 77
49. Zheng, B. *et al.* Band Alignment Engineering in Two-Dimensional Lateral Heterostructures. *J. Am. Chem. Soc.* **140**, 11193–11197 (2018).
50. Pierucci, D. *et al.* Band Alignment and Minigaps in Monolayer MoS₂-graphene van der Waals Heterostructures. *Nano Lett.* **16**, 4054–4061 (2016).
51. Henck, H. *et al.* Electronic band structure of Two-Dimensional WS₂/Graphene van der Waals Heterostructures. *Phys. Rev. B* **97**, 155421 (2018).
52. Henck, H. *et al.* Flat electronic bands in long sequences of rhombohedral-stacked graphene. *Phys. Rev. B* **97**, 245421 (2018).
53. Zribi, J. *et al.* Strong interlayer hybridization in the aligned SnS₂/WSe₂ hetero-bilayer structure. *npj 2D Mater. Appl.* **3**, 27 (2019).
54. Kormányos, A. *et al.* K · P theory for two-dimensional transition metal dichalcogenide semiconductors. *2D Mater.* **2**, 022001 (2015).
55. Scherpelz, P., Govoni, M., Hamada, I. & Galli, G. Implementation and Validation of Fully Relativistic GW Calculations: Spin-Orbit Coupling in Molecules, Nanocrystals, and Solids. *J. Chem. Theory Comput.* **12**, 3523–3544 (2016).
56. Hill, H. M., Rigosi, A. F., Rim, K. T., Flynn, G. W. & Heinz, T. F. Band Alignment in MoS₂/WS₂ Transition Metal Dichalcogenide Heterostructures Probed by Scanning Tunneling Microscopy and Spectroscopy. *Nano Lett.* **16**, 4831–4837 (2016).
57. Zhu, Z. Y., Cheng, Y. C. & Schwingenschlögl, U. Giant spin-orbit-induced spin splitting in two-dimensional transition-metal dichalcogenide semiconductors. *Phys. Rev. B* **84**, 153402 (2011).
58. Ramasubramaniam, A. Large excitonic effects in monolayers of molybdenum and tungsten dichalcogenides. *Phys. Rev. B* **86**, 115409 (2012).
59. Zhou, B. *et al.* Evolution of electronic structure in Eu_{1-x}La_xFe₂As₂. *J. Phys. Chem. Solids* **72**, 474–478 (2011).
60. Dendzik, M. *et al.* Growth and electronic structure of epitaxial single-layer WS₂ on Au(111). *Phys. Rev. B* **92**, 245442 (2015).
61. Kandemir, A. & Sahin, H. Bilayers of Janus WSSe: Monitoring the stacking type via the vibrational spectrum. *Phys. Chem. Chem. Phys.* **20**, 17380–17386 (2018).
62. Lee, H., Im, J. & Jin, H. Emergence of the giant out-of-plane Rashba effect and tunable nanoscale persistent spin helix in ferroelectric SnTe thin films. *Appl. Phys. Lett.* **116**, (2020).
63. Cheng, Y. C., Zhu, Z. Y., Tahir, M. & Schwingenschlögl, U. Spin-orbit-induced spin splittings in polar transition metal dichalcogenide monolayers. *Epl* **102**, (2013).
64. Riis-Jensen, A. C., Deilmann, T., Olsen, T. & Thygesen, K. S. Classifying the Electronic and Optical Properties of Janus Monolayers. *ACS Nano* **13**, 13354–13364 (2019).
65. Huang, S. M. *et al.* Enhancement of Rashba coupling in vertical In_{0.05}Ga_{0.95}As/GaAs quantum dots. *Phys. Rev. B - Condens. Matter Mater. Phys.* **84**, 085325 (2011).
66. LaShell, S., McDougall, B. A. & Jensen, E. Spin Splitting of an Au(111) Surface State Band Observed with Angle Resolved Photoelectron Spectroscopy. *Phys. Rev. Lett.* **77**, 3419–3422 (1996).
67. Varykhalov, A. *et al.* Quantum cavity for Spin due to spin-orbit interaction at a metal boundary. *Phys. Rev. Lett.* **101**, 256601 (2008).
68. Krempaský, J. *et al.* Disentangling bulk and surface Rashba effects in ferroelectric α -GeTe. *Phys. Rev. B* **94**, 1–7 (2016).
69. Koralek, J. D. *et al.* Emergence of the persistent spin helix in semiconductor quantum wells. *Nature* **458**, 610–613 (2009).
70. Han, W., Otani, Y. C. & Maekawa, S. Quantum materials for spin and charge conversion. *npj Quantum Mater.* **3**, 1–16 (2018).
71. Azizi, A. *et al.* Spontaneous Formation of Atomically Thin Stripes in Transition Metal Dichalcogenide Monolayers. *Nano Lett.* **16**, 6982–6987 (2016).
72. Loh, S. M., Xia, X., Wilson, N. R. & Hine, N. D. M. Strong in-plane anisotropy in the electronic properties of doped transition metal dichalcogenides exhibited in W_{1-x}Nb_xS₂. *Phys. Rev. B* **103**, 245410 (2021).
73. Azizi, A. *et al.* Frustration and Atomic Ordering in a Monolayer Semiconductor Alloy. *Phys. Rev. Lett.* **124**, 096101 (2020).
74. Stringfellow, G. B. & Chen, G. S. Atomic ordering in III/V semiconductor alloys. *J. Vac. Sci. Technol. B Microelectron. Nanom. Struct. Process. Meas. Phenom.* **9**, 2182 (1998).
75. Ben Aziza, Z. *et al.* Bandgap inhomogeneity of MoS₂ monolayer on epitaxial graphene bilayer in van der Waals p-n junction. *Carbon N. Y.* **110**, 396–403 (2016).
76. Liu, H. *et al.* Strain engineering the structures and electronic properties of Janus monolayer transition-metal dichalcogenides. *J. Appl. Phys.* **125**, 082516 (2019).
77. Pierucci, D. *et al.* Tunable Doping in Hydrogenated Single Layered Molybdenum Disulfide. *ACS Nano*

- 1
2
3 **11**, 1755–1761 (2017).
- 4 78. Ernandes, C. *et al.* Strain and Spin-Orbit Coupling Engineering in Twisted WS₂/Graphene
5 Heterobilayer. *Nanomater.* 2021, Vol. 11, Page 2921 **11**, 2921 (2021).
- 6 79. Giannozzi, P. *et al.* QUANTUM ESPRESSO: a modular and open-source software project for quantum
7 simulations of materials. *J. Phys. Condens. Matter* **21**, 395502 (2009).
- 8 80. Heyd, J., Scuseria, G. E. & Ernzerhof, M. Hybrid functionals based on a screened Coulomb potential. *J.*
9 *Chem. Phys.* **118**, 8207 (2003).
- 10 81. Wang, D., Liu, L., Basu, N. & Zhuang, H. L. High-Throughput Computational Characterization of 2D
11 Compositionally Complex Transition-Metal Chalcogenide Alloys. *Adv. Theory Simulations* **3**, 1–16
12 (2020).
- 13 82. Shahmanesh, A. *et al.* 2D Monolayer of the 1T' Phase of Alloyed WSSe from Colloidal Synthesis. *J.*
14 *Phys. Chem. C* **125**, 11058–11065 (2021).
- 15
16
17
18
19
20
21
22
23
24
25
26
27
28
29
30
31
32
33
34
35
36
37
38
39
40
41
42
43
44
45
46
47
48
49
50
51
52
53
54
55
56
57
58
59
60