



HAL
open science

Comprehensive, Continuous, and Vertical Measurements of Seawater Constituents with Triple-Field-of-View High-Spectral-Resolution Lidar

Kai Zhang, Yatong Chen, Hongkai Zhao, Zhongping Lee, Emmanuel Boss,
Iwona Stachlewska, Davide Dionisi, Paolo Girolamo, Aleksey Malinka,
Chengchong Jiang, et al.

► **To cite this version:**

Kai Zhang, Yatong Chen, Hongkai Zhao, Zhongping Lee, Emmanuel Boss, et al.. Comprehensive, Continuous, and Vertical Measurements of Seawater Constituents with Triple-Field-of-View High-Spectral-Resolution Lidar. *Research*, 2023, 6, 10.34133/research.0201 . hal-04254787

HAL Id: hal-04254787

<https://hal.science/hal-04254787>

Submitted on 23 Oct 2023

HAL is a multi-disciplinary open access archive for the deposit and dissemination of scientific research documents, whether they are published or not. The documents may come from teaching and research institutions in France or abroad, or from public or private research centers.

L'archive ouverte pluridisciplinaire **HAL**, est destinée au dépôt et à la diffusion de documents scientifiques de niveau recherche, publiés ou non, émanant des établissements d'enseignement et de recherche français ou étrangers, des laboratoires publics ou privés.



RESEARCH ARTICLE

Comprehensive, Continuous, and Vertical Measurements of Seawater Constituents with Triple-Field-of-View High-Spectral-Resolution Lidar

Kai Zhang^{1,2†}, Yatong Chen^{1,3†}, Hongkai Zhao¹, Zhongping Lee⁴, Emmanuel Boss⁵, Iwona Stachlewska⁶, Davide Dionisi⁷, Cédric Jamet⁸, Paolo D. Girolamo⁹, Aleksey Malinka¹⁰, Chengchong Jiang¹, Hongda Wu¹, Lingyun Wu¹, Feitong Chen¹, Xiaolei Zhu¹¹, Nanchao Wang¹, Chuxiao Chen¹, Qun Liu¹, Lan Wu¹, Yudi Zhou^{1*}, Weibiao Chen^{11*}, and Dong Liu^{1,2,12,13*}

¹Ningbo Research Institute, State Key Laboratory of Modern Optical Instrumentation, College of Optical Science and Engineering, Zhejiang University, Hangzhou 310027, China. ²ZJU-Hangzhou Global Scientific and Technological Innovation Center, Zhejiang University, Hangzhou 311200, China. ³Donghai Laboratory, Zhoushan 316021, China. ⁴State Key Lab of Marine Environmental Science, College of Ocean and Earth Sciences, Xiamen University, Xiamen 361102, China. ⁵School of Marine Sciences, University of Maine, Orono, ME 04469-5741, USA. ⁶Faculty of Physics, University of Warsaw, Warsaw 02093, Poland. ⁷Institute of Marine Sciences, Italian National Research Council, Rome 00133, Italy. ⁸Université du Littoral Côte d'Opale, CNRS, Univ. Lille, IRD, UMR 8187 - LOG - Laboratoire d'Océanologie et de Géosciences, Wimereux F-62930, France. ⁹Institute Scuola di Ingegneria, Università della Basilicata, Potenza 85100, Italy. ¹⁰Institute of Physics, National Academy of Sciences of Belarus, Minsk 220072, Belarus. ¹¹Key Laboratory of Space Laser Communication and Detection Technology, Shanghai Institute of Optics and Fine Mechanics, Chinese Academy of Sciences, Shanghai 201800, China. ¹²Intelligent Optics & Photonics Research Center, Jiaxing Research Institute Zhejiang University, Jiaxing 314000, China. ¹³Jiaxing Key Laboratory of Photonic Sensing & Intelligent Imaging, Jiaxing 314000, China.

*Address correspondence to: zhouyudi@zju.edu.cn (Y.Z.); wbchen@siom.ac.cn (W.C.); liudongopt@zju.edu.cn (D.L.)

†These authors contributed equally to this work.

Measuring the characteristics of seawater constituent is in great demand for studies of marine ecosystems and biogeochemistry. However, existing techniques based on remote sensing or in situ samplings present various tradeoffs with regard to the diversity, synchronism, temporal-spatial resolution, and depth-resolved capacity of their data products. Here, we demonstrate a novel oceanic triple-field-of-view (FOV) high-spectral-resolution lidar (HSRL) with an iterative retrieval approach. This technique provides, for the first time, comprehensive, continuous, and vertical measurements of seawater absorption coefficient, scattering coefficient, and slope of particle size distribution, which are validated by simulations and field experiments. Furthermore, it depicts valuable application potentials in the accuracy improvement of seawater classification and the continuous estimation of depth-resolved particulate organic carbon export. The triple-FOV HSRL with high performance could greatly increase the knowledge of seawater constituents and promote the understanding of marine ecosystems and biogeochemistry.

Introduction

Various processes that are critical for marine ecosystems and biogeochemistry are associated with seawater constituents [1,2]. Measuring optical properties and particle size distribution (PSD),

which are external expressions of type, refractive index, geometric shape, structure, and biological and chemical features of seawater constituents, makes important contributions to increase our knowledge regarding planktonic growth-metabolic processes [3], particle aggregation and fragmentation [4], phytoplankton

Citation: Zhang K, Chen Y, Zhao H, Lee Z, Boss E, Stachlewska I, Dionisi D, Jamet C, Girolamo PD, Malinka A, et al. Comprehensive, Continuous, and Vertical Measurements of Seawater Constituents with Triple-Field-of-View High-Spectral-Resolution Lidar. *Research* 2023;6:Article 0201. <https://doi.org/10.34133/research.0201>

Submitted 31 December 2022

Accepted 4 July 2023

Published 19 July 2023

Copyright © 2023 Kai Zhang et al. Exclusive licensee Science and Technology Review Publishing House. No claim to original U.S. Government Works. Distributed under a Creative Commons Attribution License 4.0 (CC BY 4.0).

Downloaded from <https://sji.science.org> on September 27, 2023

blooms [5], biological pumps [6], etc. Furthermore, the temporal and spatial variability of ambient light in the oceans can be quantified, which affects practical applications ranging from prey–predator relationships to coastal bathymetric mapping, as it is a fundamental driver of marine productivity and upper ocean heat budget [7,8]. Therefore, high-resolution and accurate measurement techniques are highly desired for monitoring optical properties and PSD of seawater constituents to study marine ecosystems and biogeochemistry.

Passive optical remote sensing techniques provide surface information in large areas but have little sensitivity to vertical distributions of seawater constituents [9]. In situ methods can provide accurate and depth-resolved data, but they are limited in the amount of spatial and temporal coverage due to unavoidable contact with seawater [10]. Lidar, an active optical remote sensing technique, can obtain continuous and vertical optical properties during both day and night time [11,12], which has been used to study plankton [13], primary productivity [14], etc. Hitherto, most oceanic lidars have limited information, mainly including the backscatter and lidar attenuation coefficients [15]. The lack of absorption and scattering coefficients, as well as PSD, limits the lidar applications in marine science, including carbon cycles and seawater classification. Thus, it remains a challenge in optical remote sensing and in situ techniques to meet the simultaneous measurement demands of characteristic types, underway observations, and vertical information.

To overcome this conundrum, lidar signals, which are coupled with absorption, scattering coefficients, and PSD through multiple scattering effect, should be further analyzed to obtain more information of seawater constituents [16]. Studies have shown that the lidar attenuation coefficient can be regarded as the beam attenuation coefficient at a narrow field of view (FOV) near zero and the diffuse attenuation coefficient (K_d) at a wide FOV [17], which was then verified by field measurements [12]. Therefore, a multi-field-of-view (multi-FOV) lidar system can potentially obtain more information than current single-FOV lidar systems. Furthermore, the particulate volume scattering function is highly complicated in the backward direction, leading to the quantifying of the multiple scattering become an arduous task [18]. The molecular Brillouin scattering could solve this problem due to its isotropic backscattering [11]. It is shifted about 7 to 8 GHz to both sides relative to the central wavelength of the laser, which can be discriminated by the high-spectral-resolution lidar (HSRL) technique. Thus, the combination of multi-FOV and HSRL techniques could be beneficial to solving the above conundrum.

Here, we demonstrate an oceanic triple-FOV HSRL for comprehensive, continuous, and vertical measurements of seawater constituents. With the well-designed and well-calibrated triple-FOV HSRL system, desirable performance is achieved for continuous profiles of absorption (a) (532 nm), scattering (b) (532 nm), and the slope of PSD (ξ), which are highly consistent with Monte Carlo (MC) simulations and in situ measurements. The system has been deployed in the South China Sea to measure the vertical structure and horizontal gradient of nearshore to offshore seawaters. Furthermore, potential applications in the seawater classification and estimating the particulate organic carbon export are presented, which have broad implications for understanding seawater constituents and related marine science studies.

Results

Triple-FOV HSRL technique

The triple-FOV HSRL system, deployed on the foredeck of R/V Runjiang No.1, is composed of the upper and lower parts (Fig. 1A). The transmitter and receiver are integrated into the upper part to ensure a stable optical system with supporting devices in the lower part. The transmitter, emitting the laser pulse into the seawater, mainly consists of a diode-pumped, Q-switched, injection-seeded, frequency-doubled neodymium-doped yttrium aluminum garnet laser with a pulse energy of 10 mJ at 532 nm and a repetition frequency of 10 Hz (Fig. 1B) [19–21]. The laser wavelength is locked to the absorption line of an iodine cell by a proportional-integral-derivative (PID) servo loop. The lidar signals, including particulate scattering and molecular Brillouin scattering, are collected through a telescope and divided into 4 channels. The combined channel at the wide FOV (200 mrad) detects all components of the lidar signals, while the 3 molecular channels at the triple-FOV (40, 80, and 200 mrad) all reject the particulate signal and transmit the molecular Brillouin signal through the exploitation of the iodine absorption line. Photomultiplier tubes (PMT) and a high-speed data acquisition card are used to record the lidar signals [22,23]. The channel gains are intercalibrated by the gain ratio calibration of the PMTs. The main parameters of oceanic triple-FOV HSRL are shown in Supplementary Materials (Table S3), and the optimization of lidar FOVs is analyzed in Text S1.

The basic principle of triple-FOV HSRL for detecting seawater constituents depends on the multiple scattering of photons in the seawater (Fig. 1C). The emitted photons of the laser beam can be scattered in different directions by seawater constituents. In this process, multiple scattering takes place when a portion of scattered photons is dispersed again by neighbouring molecules or particles. Hence, lidar signals are generated by combining single scattered and multiple scattered photons collected by the telescope. In particular, the expansion of the signal angular distribution due to multiple scattering results in intensity variations collected by different FOVs. These signals are governed by the absorption coefficient, the scattering coefficient, the PSD of particles, and the spatial geometry distribution of the observation using the analytical model (see the Materials and Methods for details). Therefore, significant information of seawater constituents can be obtained from the multi-FOV system.

The seawater absorption coefficient (a), the scattering coefficient (b), and the slope of PSD (ξ) (see the Materials and Methods for more details) are retrieved from triple-FOV molecular signals according to an iterative retrieval scheme (Fig. 2A). The steps are as follows:

1. The simulated molecular signals (B_s) are produced by using the analytical model as mentioned above. The initial values of a , b , and ξ input into the model are estimated as the lidar attenuation coefficient at wide FOV, narrow FOV, and a median value within the possible range of coastal water [24], respectively.

2. An iterative retrieval scheme is employed to retrieve the most likely values of a , b , and ξ by minimizing the relative differences between the simulated signal B_s and the measured molecular signal B_M at triple FOVs. This process can be expressed as a numerical solution to the minimum of the 2-Norm form, that is,

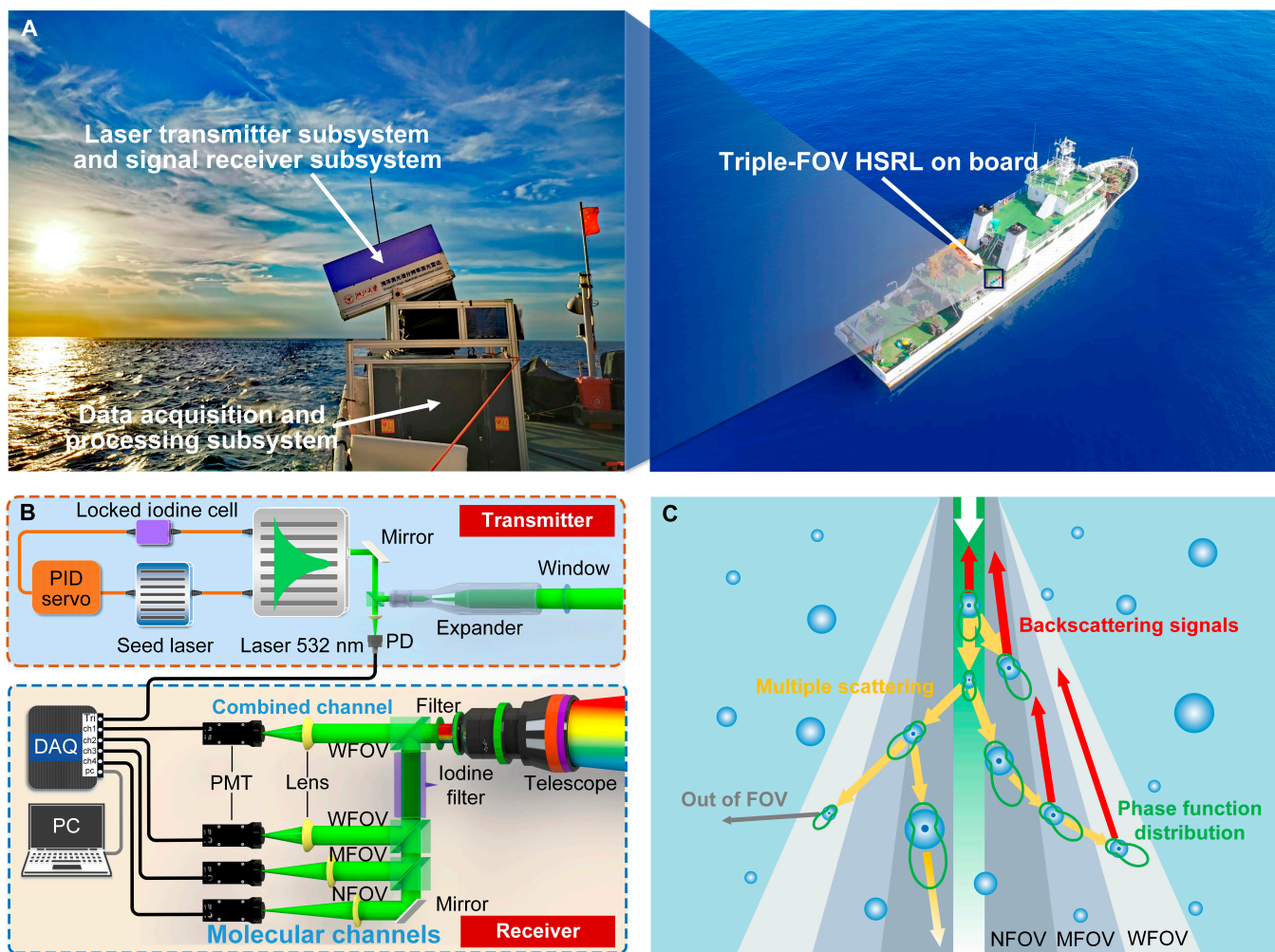


Fig. 1. Principle of the shipborne triple-FOV HSRL. (A) System deployment geometry. (B) Schematic diagram of the triple-FOV HSRL system. WFOV, MFOV, and NFOV are for the wide FOV (200 mrad), middle FOV (80 mrad), and narrow FOV (40 mrad), respectively. (C) Simplified scheme for the triple-FOV HSRL detecting multiple scattering signals from seawater constituents.

$$\mathbf{X} = [a_r, b_r, \xi_r] = \operatorname{argmin} \left\| \frac{\Delta \mathbf{B}}{\mathbf{B}} \right\|_2,$$

$$\frac{\Delta \mathbf{B}}{\mathbf{B}} = \left[\frac{B_{M1} - B_{S1}}{B_{M1}}, \frac{B_{M2} - B_{S2}}{B_{M2}}, \frac{B_{M3} - B_{S3}}{B_{M3}} \right], \quad (1)$$

where a_r , b_r , and ξ_r are the retrieved values of a , b , and ξ , respectively; the subscripts 1, 2, and 3 correspond to the narrow, medium, and wide FOV, respectively. The signal relative differences are gradually approaching the minimum value, while a , b , and ξ are adjusted toward true values during the convergence iterations (Fig. 2B). Taking a trial group at the j th iteration of a_j , b_j , and ξ_j as an example, the retrieval parameters are perturbed as $\mathbf{X}_{j+1} = \mathbf{X}_j + \Delta \mathbf{X}_j$. The convergence steps $\Delta \mathbf{X}_j$ are generated by:

$$\frac{\Delta \mathbf{X}}{\mathbf{X}} = \frac{\Delta \mathbf{B}}{\mathbf{B}} \mathbf{S}^{-1}, \quad (2)$$

where \mathbf{S} is the triple-FOV signal sensitivity to a , b , and ξ (see the Supplementary Materials, Text S1 for more details), calculated by the analytical model. Due to signal noises, the iteration is forced to stop when the relative difference is below a threshold

value predetermined by the system noise levels. In this work, 10% root-mean-square relative difference between the simulated B_s profile with the measured B_M profile is used, and its detailed definition is given in the next section. It should be noted that the seawater characteristics at different depths corresponding to the specific profiles under 3 FOVs are retrieved simultaneously. It is because that the lidar signal at a deeper depth is jointly determined by the seawater characteristics at all depths above it.

To illustrate the iteration process, an intuitive example is given (Fig. 2C): the initial values of B_M and B_s corresponding to the initial values of a , b , and ξ at different FOVs are provided (left plot); combining the signal differences and sensitivities in Eqs. 1 and 2, values of Δa , Δb , and $\Delta \xi$ resulting in convergence of B_s to B_M are derived (middle plot); finally, the relative differences fall below the threshold values, and the retrieval results are obtained (right plot).

In addition to a , b , and ξ , the particulate backscatter coefficient (b_{bp}) and K_d can be obtained from the combined and molecular signals at the wide FOV [25]. Similar to the atmospheric aerosol studies [26–29], the lidar ratio (R) and the single scattering albedo (ω_0) are regarded as key parameters for the

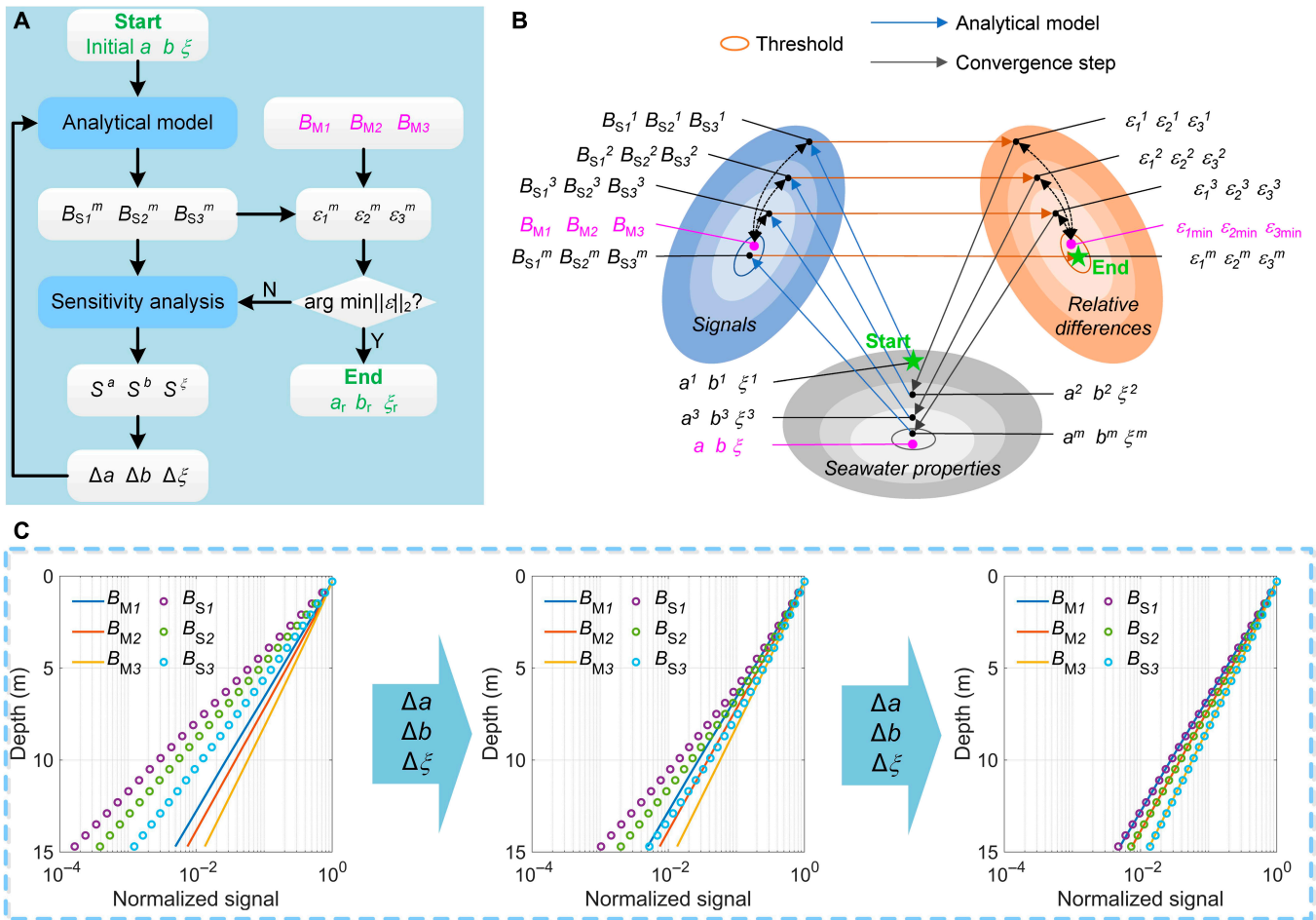


Fig. 2. Triple-FOV HSRL retrieval algorithm. (A) Flow chart of the retrieval algorithm. (B) Schematic diagram of the iteration process. (C) Example of the signal iteration process. ε is the relative difference between the simulated and measured molecular signals B_S and B_M . The superscripts 1, 2, 3... m is the number of iterations.

characterization and classification of seawater constituents. R is defined as the ratio of K_d excluding pure seawater to the particulate volume scattering function at 180° , which can be obtained by a single-FOV HSRL. ω_0 is the ratio of the particulate scattering coefficient to the beam attenuation coefficient excluding pure seawater, which can be calculated from the triple-FOV HSRL retrieval products.

Performance of the triple-FOV HSRL technique

To ensure the quality of measurements, the edge and width of the triple FOVs are calibrated by the laser spot position where the lidar signal attenuates to half (see the Supplementary Materials, Text S2 and Fig. S1). As shown in Fig. 3A, the final calibration values for the triple-FOV are 196.8 ± 9.5 mrad (wide FOV), 83.2 ± 4.0 mrad (middle FOV), and 43.4 ± 1.6 mrad (narrow FOV), respectively, proving the accuracy of the system FOV design. By the PID servo loop, the laser frequency is locked to the iodine absorption line within an offset frequency of 10 MHz (Fig. 3B). In this way, coincident wavelengths of the laser emission, the iodine line, and the particulate backscatter signals are generated to ensure the retrieval accuracy of optical properties at 532 nm.

Moreover, simulated data from the MC technique and in situ data from field measurements are used to verify the consistency of the triple-FOV HSRL results. Parameter settings of the MC simulations (see the Supplementary Materials, Tables S1 and

S2) and profiles of field experiments (see the Supplementary Materials, Fig. S2) are given for more details. To evaluate the relative difference between B_S with B_M or the retrieval accuracy, the root-mean-square relative difference (*RMSRD*) is used, which is defined as

$$RMSRD = \sqrt{\frac{\sum_{i=1}^n (x_i/\bar{x}_i - 1)^2}{n}} \times 100\%, \quad (3)$$

where n is the total number of signal sampling bins; x_i is the simulated or lidar retrieved values; \bar{x}_i is the MC input or measured values, working as the reference values.

The lidar measurements of a , b , and ξ are found to be in good agreement with MC and in situ estimates (Fig. 3C to E). Estimated values of *RMSRD* for a , b , and ξ between the triple-FOV HSRL and MC values are 7.7%, 10.9%, and 0.6%, respectively. A strong correlation is observed with a coefficient of determination (r^2) of 0.92, 0.95, and 0.99, respectively. Relative differences are higher in turbid seawaters, i.e., when a and b are larger (ξ is smaller), since the signal fluctuations of the MC simulations are more significant in this case. In field experiments, values of *RMSRD* are 3.9%, 8.4%, and 1.0%, with values of r^2 as 0.95, 0.76, and 0.70, respectively, for a , b , and ξ constituting an excellent agreement when compared with in situ measurements.

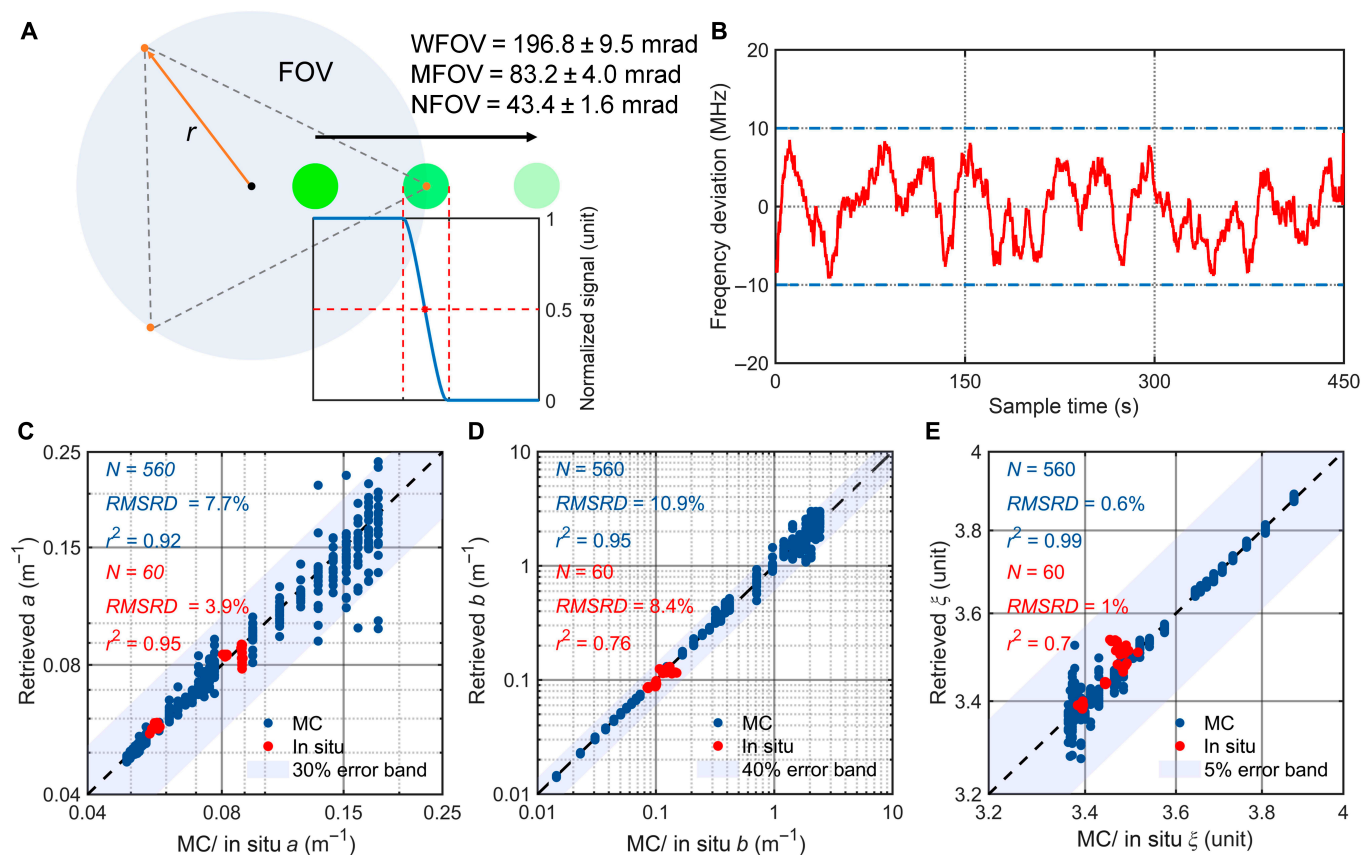


Fig. 3. The performance of the triple-FOV HSRL technique. (A) Calibration of FOVs. (B) Locked laser frequency drift compared with the iodine line. Comparisons of (C) the absorption coefficient a , (D) the scattering coefficient b , and (E) the slope of PSD ξ with MC and in situ results. WFOV, MFOV, and NFOV are for the wide FOV, middle FOV, and narrow FOV, respectively.

Underway measurements

During the 2020 Joint autumn cruise, underway measurements were carried out from September 11 to September 13 (UTC+0800) with the ship track and study region in the South China Sea (see the Supplementary Materials, Fig. S3). Profiles of b_{bp} from the triple-FOV HSRL are plotted in Fig. 4A. The results show a decreased trend of turbidity from nearshore to offshore, which is consistent with variations of chlorophyll- a concentration (Chl) from Moderate-resolution Imaging Spectroradiometer (MODIS) monthly products. High values of b_{bp} and Chl in the nearshore water are attributed to the sufficient nutrient supply due to the shallow depth and prevalent upwelling near Hainan Island [30]. The transect with distinct nearshore-to-offshore gradients of b_{bp} on September 12 was selected for further investigation (magenta line in Fig. 4A).

Along the transect, depth-resolved distributions of K_d , b_{bp} , a , b , and ξ were obtained except near the sea surface (0 to 2 m, to avoid surface effect) and at depths where signal-to-noise ratios are too low (Fig. 4B to F). The transect is divided into 5 regions, L1 to L5, based on the variation of seawater characteristics. In the L1 region that is closest to the shore, K_d , b_{bp} , a , and b reached maximum values of about 0.17, 0.005, 0.11, and 0.75 m^{-1} , respectively, while ξ came to the minimum value of about 3.15. As the ship traveled southwest into the L2 region, K_d , b_{bp} , a , and b decreased to 0.12, 0.0028, 0.085, and 0.55 m^{-1} , respectively, while ξ increased to 3.35. Moving offshore, K_d , b_{bp} , a , and b decreased rapidly to about 0.1, 0.0018, 0.078, and 0.4 m^{-1} , respectively, in the junction area of L2 and L3, while ξ remained

relatively constant. In the L3 region, seawater was clearer than in the L1 to L2 region, with b_{bp} and b gradually decreasing with increasing ξ . Then the ship turned the direction near the L4 region, during which the ship first sailed to nearshore and then headed offshore to the southeast. This trajectory was reflected in the fact that b_{bp} , b , and ξ came to about 0.002 m^{-1} , 0.45 m^{-1} , and 3.3 in the L4 region, then K_d , b_{bp} , a , and b decreased to their minimum values in the L5 region (about 0.07, 0.00045, 0.047, and 0.25 m^{-1} , respectively), while ξ achieved a maximum value of about 3.42. In addition, vertical variations of characteristics were found near the water surface in the L4 regions, indicating the higher concentration of seawater constituents at greater depths. These results demonstrate that the water clarity gradually increases from the nearshore to the offshore region, which is consistent with other studies [31,32]. ξ was negatively correlated with the other seawater optical properties (see the Supplementary Materials, Fig. S4), indicating that the slope of the PSD decreases as the proportion of large particles increases in more turbid seawater [33]. This series of long-distance observations showcase the utility of the triple-FOV HSRL technique providing a continuous observation of seawater characteristics.

Constituent classification and carbon export

As demarcations of different regions are clearly visible, it is fairly appealing to employ optical properties and PSD for seawater constituent classification. The lidar ratio (R), the single scattering albedo (ω_0), and ξ are clustered (see the

Supplementary Materials, Fig. S5) and classified (Fig. 5A to D) for L1 to L5 regions using the random-forest-based seawater classification model (see the Materials and Methods for more details). It exhibits a substantial improvement compared to using only R based on the single-FOV HSRL for classification (Fig. 5A and B). In particular, single-FOV HSRL classification results in a large confused proportion in the L2-L4 regions between nearshore and offshore. Notably, the triple-FOV HSRL method improved the self-validation accuracy of classification confusion matrix in these 3 regions by 2.1, 1.6, and 2.5 times, respectively (Fig. 5C and D). The triple-FOV HSRL classification is able to resolve a shallow L3 in the L4 region, presenting the intrusion of seawater from the L3 region into the surface layer of the L4 region (Fig. 5B). A possible explanation for this intrusion event might be that the tide impacts the diurnal variation in seawater constituents [34]. The night-time high tide near Hainan Island (see the Supplementary Materials, Fig. S6) carried deeper seawaters of the L3 region into the upper layer of nearshore seawaters, causing marked stratifications of seawater characteristics in the L4 region. The results indicate that additional characteristics benefit the classification of seawater constituents and the discovery of special phenomena.

Particles of biological origin play an important role in ocean carbon sequestration by converting inorganic carbon into organic carbon and exporting particulate organic carbon to the deep ocean [35]. However, estimates of the particulate organic carbon export flux (EP) remain highly uncertain, mainly limited to surface-integrated quantities [36]. The PSD slope ξ provides ways to compute the particle size fractions relative to total particles [24]. A depth-resolved EP can be computed by employing the K_d , b_{bp} , and ξ profiles with other auxiliary data based on the food-web model (see the Materials and Method).

Overall, EP showed similar distribution patterns as those of seawater characteristics along the transect from the nearshore to offshore regions (Fig. 5E). The intensity of EP decreased from a maximum of $58.08 \text{ mgCm}^{-3}\text{d}^{-1}$ in the L1 region to a

minimum of $7.37 \text{ mgCm}^{-3}\text{d}^{-1}$ in the L5 region (Fig. 5F). The results suggest that values of EP were dominated by the flux of fecal matter from zooplankton grazing ($FecEZ$) in all regions, of which the large phytoplankton ($FecEZm$) took a more significant fraction than the small phytoplankton ($FecEZs$), while the direct sinking export of large phytoplankton ($AlgEZ$) made a much smaller contribution [36]. High values of EP were found in parts of the sea surface in the L1 region, perhaps due to the aggregation of nearshore phytoplankton and other organic particles. This result was consistent with the Chl and seawater characteristics distributions (Fig. 4). Besides, phytoplankton will accumulate in shallow waters because of stronger light intensity, which may lead to the decrease of NPP and EP with depth increasing in nearshore seawaters [37]. As mentioned previously, the high tide from L3 took part of phytoplankton away from the upper L4, and reduced the EP of surface seawaters and weakened the decreasing trend of EP with depth in the L4 region. This intrusion event was also reflected in the more significant contributions of large phytoplankton ($AlgEZ$ and $FecEZm$) into the EP than in the surrounding regions. The depth-resolved EP derived from triple-FOV HSRL measurements offers vertical information on carbon exports and will further advance studies on the 3-dimensional global carbon cycle.

Numerous studies have attempted to obtain PSD slope based on remote sensing of ocean color or directly from in situ measurements. Previous values of ξ range from 2.5 to 5 [31–33,38–46], with typically smaller values in turbid waters compared to higher values in clear seawaters (Fig. 5G). The mean value and SD of ξ from triple-FOV HSRL are found to be 3.38 and 0.23 in this work, respectively. The values are significantly smaller than values in clear open ocean environments (around 4.0). We have found that the relatively low values of ξ in the coastal seawater near Hainan are consistent with the characteristics of the more turbid waters in other studies, such as the coastal waters of California [31] or the English Channel [40], potentially indicating a more significant EP than other clearer regions.

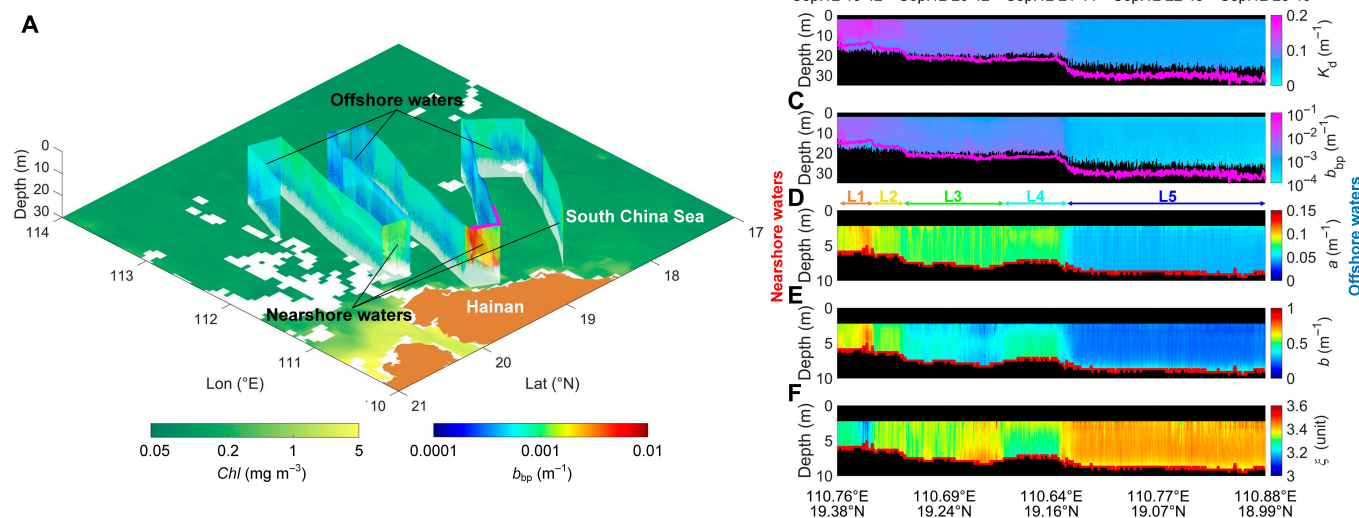


Fig. 4. Triple-FOV HSRL and ocean color results near Hainan Province on 2020 September 12. (A) Continuous S-shaped underway triple-FOV HSRL measurements of the particulate backscattering coefficient b_{bp} together with the surrounding chlorophyll-a concentration Chl from MODIS satellite measurements. The magenta line shows the area selected for further studies. (B) Diffuse attenuation coefficient K_d . (C) Particulate backscattering coefficient b_{bp} . (D) Absorption coefficient a . (E) Scattering coefficient b . (F) Slope of PSD ξ . Magenta lines in (B) and (C) indicate 3 optical depths, and red lines in (D) and (E) show the maximum effective depth of the triple-FOV HSRL retrieval, which is mainly determined by the noise level of the signal at the narrow FOV, where the dynamic range of 3 orders of magnitude is selected in this work.

Discussion

In this work, we developed a novel oceanic triple-FOV HSRL that can provide comprehensive, continuous, and vertical measurements of seawater constituents. This high-performance technique can retrieve multiproperty profile measurements (absorption coefficient a , scattering coefficient b , and slope of PSD ξ) in various water types, and we have validated these abilities using both MC radiative transfer simulations and in situ measurements with high fidelity (Fig. 3). Furthermore, we studied a typical nearshore-to-offshore transect in the coastal seawater of Hainan Island on 2020 September 12 (Fig. 4). Although ocean color remote sensing data, such as MODIS and Visible infrared Imaging Radiometer products, contain global surface-integrated optical properties and particle size parameters of seawaters [9,33], the triple-FOV HSRL provides more refined depth-resolved characteristics of seawater constituents for conducting in-depth analyses of shallow oceans. The continuous profiles obtained by the triple-FOV HSRL reveal both horizontal gradients and vertical variations of comprehensive seawater constituent characteristics, which can be very difficult to get from in situ measurements, such as the WETLabs AC-S and HOBILabs HS6P used in this work.

Using the triple-FOV HSRL technique, we developed a seawater classification approach based on lidar ratio (R), single scattering albedo (ω_0), and ξ (Fig. 5A to D). The accuracy of self-validation in the L1 to L5 region is improved by up to 41.2%

compared to the results for R -only classification. An interesting seawater layer intrusion event related to the tide impact on the variation of seawater constituents was founded in the classification results. In addition, triple-FOV HSRL can provide additional seawater characteristics for other classification schemes, such as remote-sensing-reflectance-based [47] and K_d -based [48] methods, producing a more accurate and informative seawater classification. In this work, we have not distinguished between planktonic and mineral fractions of oceanic particles. The integration of polarization information [49] available with triple-FOV HSRL will enable us to further classify particulate constituents of upper seawaters. Distinguishing the contribution of different plankton or particle types is imperative for validating and improving the food-web model processes and ocean carbon cycle analyses.

In the global carbon cycle, the biological carbon pump by seawater constituents is essential for ocean carbon sequestration by converting inorganic source into organic carbon and exporting it to the deep ocean, and it is an important scientific quest to study the link between this process to the changing climate [2]. However, there remains great challenges to getting accurate estimates of EP and its vertical distribution based on ocean color remote sensing or in situ measurements [50]. The ξ from the triple-FOV HSRL can be used to constrain the microphytoplankton contribution to the total chlorophyll- a concentration, which is a critical parameter in the estimation of EP . In combination with auxiliary data

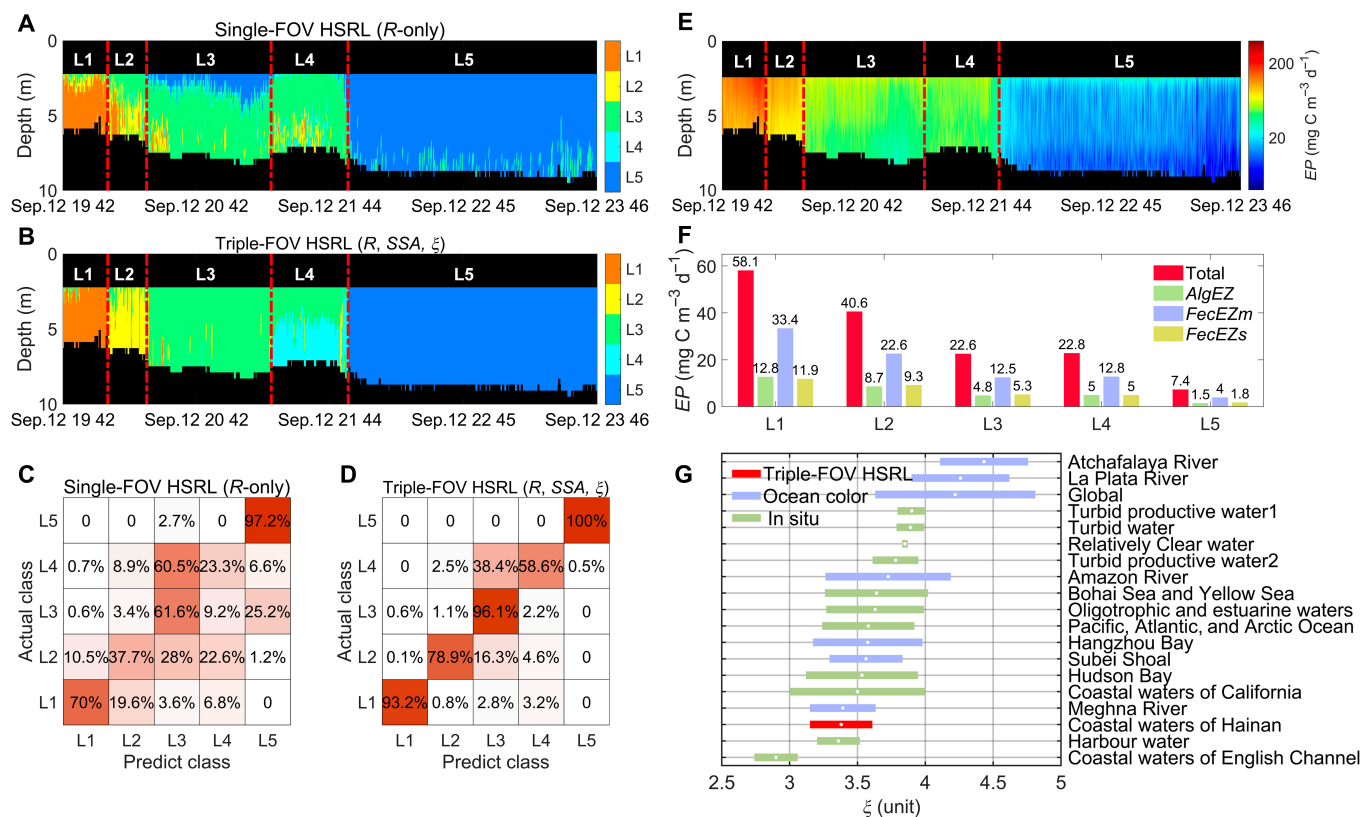


Fig. 5. Applications of retrieval results. (A) Classification results from single-FOV HSRL. (B) Classification results from triple-FOV HSRL. (C) Confusion matrix of single-FOV HSRL classification. (D) Confusion matrix of triple-FOV HSRL classification. (E) Depth-resolved particulate organic carbon export flux EP . (F) Contributions of different sources to EP in L1 to L5 regions; $AlgEZ$ is the direct sinking export of large phytoplankton; $FecEZm$ is the flux of fecal matter from large zooplankton grazing; $FecEZs$ is the flux of fecal matter from small zooplankton grazing. (G) Historical ξ values from previous studies, including this work; the white center point of the color bar represents the mean value, and the lengths on both sides represent the SD of the observations.

Downloaded from https://spj.science.org on September 27, 2023

obtained from other instruments, the triple-FOV HSRL enables the analysis of depth-resolved *EP* and its components in different regions, indicating the great potential of this technique in improving ocean carbon studies (Fig. 5E and F).

Promising future directions also include improving the system detection capabilities, accumulating more field experiment data, and integrating the triple-FOV HSRL with other measurement systems to benefit future investigations into plankton community structure and succession. Overall, the proposed triple-FOV HSRL technique can provide an improved solution for interpreting seawater constituent characteristics and expanding our understanding of marine ecosystems and biogeochemistry.

Materials and Methods

Parameterization of the seawater

The absorption coefficient (*a*), scattering coefficient (*b*), and backscattering coefficient (*b_b*) can be separated into the contribution from pure seawater and other components, where the values for pure seawater at 532 nm adopted in this work are 0.042, 0.0022, and 0.0011 m⁻¹, respectively [51,52]. The effects of temperature and salinity were omitted. Optical properties are determined by the particulate constituents and their PSD in seawaters.

Several analytical models for the PSD of seawater particles have been proposed in previous studies. The most used PSD is a power-law type [53]:

$$N_p(D) = N_0 \left(\frac{D_0}{D} \right)^{-\xi}, \quad (4)$$

where *N_p* is the number concentration of particles per volume of seawater particles in m⁻³μm⁻¹; *D* is the particle diameter in μm; *N₀* is the particle number concentration at the reference diameter *D₀*, and *ξ* is the power-law exponent of the PSD (often referred to as “slope”). As described by this power-law distribution, *N_p* decreases with the increase of *D*, consistently with the analysis of the ecological structure and predator–prey relationships in planktonic ecosystems [54]. The distribution and evolution of the PSD are closely related to physical and biogeochemical processes in seawaters. The Fourier–Forand phase function [53] provides us with an analytic expression for the phase function of a population of homogeneous spheres, distributed according to the power-law size distribution based on a modified form of the anomalous diffraction approximation. This function is used in our calculations of the further multiple scattering model and iterative retrieval process. Basing on the Fourier–Forand phase function, the particulate backscattering fraction of the seawater *BF* can be further obtained by

$$BF = \frac{b_{bp}}{b_p} = 1 - \frac{1 - \delta_{90}^{\nu+1} - 0.5(1 - \delta_{90}^{\nu})}{(1 - \delta_{90}^{\nu})\delta_{90}^{\nu}}, \quad (5)$$

where *b_p* is the particulate scattering coefficient in m⁻¹; $\delta_{90} = 0.75(m - 1)^{-2} \sin^2(90^\circ/2)$ and $\nu = (3 - \xi)/2$ are intermediate variables; $m = 1.01 + 0.1542(\xi - 3)$ represents the refractive index of particles relative to seawater.

Multiple scattering model

The analytical model based on the quasi-single-scattering small-angle approximation is used to simulate oceanic HSRL

signals efficiently [55]. The analytical model is applied to the forward simulation of triple-FOV HSRL signals and the further iterative retrieval process, achieving more credible simplification than the traditional methods. In the analytical model, the coaxial molecular signal profile of HSRL can be expressed as

$$B_{Sn} = F \{ C_0, [a_1 \dots a_i], [b_1 \dots b_i], [\xi_1 \dots \xi_i], FOV_n \}, \quad (6)$$

where *F* represents the forward simulation of HSRL molecular signals by analytical model; *C₀* is the system constant; *a₁...a_p*, *b₁...b_p*, and *ξ₁...ξ_i* are whole profiles of *a*, *b*, and *ξ*. This means that once the lidar system parameters are determined, the molecular signal can be written as an equation of *a*, *b*, and *ξ*.

Data from a semianalytical MC were used to validate the performance of the retrieval algorithm in this work. The details of this model can be found in our previous work [56]. The traditional MC applied to lidar achieves the purpose of signal simulations by tracing the scattering process of numerous photons in the water and counting the number of photons returned to the lidar receiver. The semianalytical MC model combines the statistical approach and the analytical estimation, which greatly improves the efficiency of the MC simulation and reduces the fluctuation of the simulated signal. To obtain the multi-channel signals in triple-FOV HSRL simultaneously, the semianalytical MC considered in this paper relies on both particulate scattering and molecular scattering and divides the lidar returns into combined channels and molecular ones.

In situ measurements

An optical package, which included WETLabs AC-S and HOBILabs HS6P, measuring in situ optical properties was deployed at specific locations (stations) lowered with a winch. WETLabs AC-S can measure the spectral absorption and beam attenuation coefficients (here, we use only the values at 532 nm). The particulate backscattering coefficient at 532 nm was obtained from the particulate backscattering at 510 nm from HOBILabs HS6P, assuming $b_{bp}(\lambda) = b_{bp}(\lambda_0)\lambda_0/\lambda$ [57]. *ξ* is calculated by substituting the in situ values of *b_p* and *b_{bp}* into Eq. 5. All in situ data were binned to a depth resolution of 1 m.

It should be noted that, in situ *ξ* are converted from in situ measurements of the particulate backscattering fraction *BF* of the seawater. Therefore, for the rigor, we also converted retrieved *ξ* to *BF* and compared them with in situ values in the Supplementary Materials, Fig. S2.

Assessment of particulate organic carbon export flux

Vertically resolved particulate organic carbon export flux (*EP*) is defined using a 2-component food-web-based model as [36,50]

$$EP(z) = AlgEZ(z) + FecEZ(z), \quad (7)$$

where *AlgEZ* is the direct sinking export of large phytoplankton and *FecEZ* is flux of fecal matter from zooplankton grazing. *AlgEZ* can be calculated as the product of the net primary production (*NPP*). This model has been commonly used in the studies of *EP* [36,50], and the triple-FOV HSRL data are applied to it in this work. The *NPP* is calculated using the carbon-based production model, where inputs include *b_{bp}* (from triple-FOV HSRL), chlorophyll-a (*Chl*, derived by *K_d* from triple-FOV

HSRL), and photosynthetically available radiation (*PAR*, from MODIS L3 monthly products) [58].

The *FecEZ*, which can be divided into parts from large (*FecEZm*) and small phytoplankton (*FecEZs*), is calculated using the *NPP*, b_{bp} , K_d , the rate of change in *Chl* (from MODIS L3 products) and mixed-layer depth (calculated from wind field data of CMPP 2.0) [50,59]. The fractions of micro and small phytoplankton are estimated based on the value of ξ [24].

Seawater classification method

Random forest is one of the most successful methods currently applied to various regressions, classifications, and other related issues [60]. A random forest classification model is used for the seawater classification in this work, in which a total of 100 trees with a split number of 5 and a depth of 12 are adopted. R , ω_0 , ξ (or only R), and corresponding seawater types L1 to L5 work for the model training. Finally, confusion matrixes of self-validation are used to evaluate the classification performance.

Acknowledgments

The authors want to thank insightful discussions from Dr. M. Behrenfeld at Oregon State University about lidar data and marine science. We thank NASA Ocean Biology Processing Group, USA, National Marine Data Information Center, China, Remote Sensing Systems, USA, and National Geophysical Data Center, USA, for the ocean color and other auxiliary data. We thank the captain and all the crews of R/V Runjiang No.1 for the assistance and support in the field experiment, and scientists at Second Institute of Oceanography, China, for collecting in situ data.

Funding: This study was supported by the National Key Research and Development Program of China (2022YFB3901704); the Excellent Young Scientist Program of Zhejiang Provincial Natural Science Foundation of China (LR19D050001 and LQ23F050011); the Fundamental Research Funds for the Central Universities (2021XZZX019); the National Natural Science Foundation of China (NSFC) (62205289); the Scientific Research Foundation for Talent Introduction of Zhejiang University Ningbo Campus (20201203Z0175 and 20201203Z0177); the Ningbo Natural Science Foundation (2022J153 and 2022J154); the State Key Laboratory of Modern Optical Instrumentation Innovation Program; and the Zhejiang University Global Partnership Fund. **Author contributions:** D.L. and Y.Z. conceived the idea. D.L., N.W., Lingyun W., C. Jiang, H.W., C.C., and F.C. designed and built the triple-FOV HSRL instrument. K.Z., Y.C., and A.M. established the retrieval algorithm. K.Z., H.Z., and Y.C. processed the HSRL and passive data. H.Z. and Y.Z. prepared the in situ data. W.C., Z.L., E.B., I.S., D.D., P.D.G., and C. Jamet provided the explanation of marine science. K.Z., Y.Z., and Y.C. wrote the manuscript with contributions from all coauthors. Z.L., E.B., I.S., D.D., C. Jamet, P.D.G., A.M., X.Z., Lan W., and Q.L. revised the manuscript. D.L., Y.Z., and Q.L. acquired the fundings. D.L., W.C., and Y.Z. supervised the research. K.Z. and Y.C. contributed equally. **Competing interests:** The authors declare that there is no conflict of interest regarding the publication of this article.

Data Availability

The digital topographic data from the ETOPO1 Global Relief Model published by the National Geophysical Data Center are available at <http://www.ngdc.noaa.gov/mgg/global/global.html>. The tide height data from the National Marine Data and

Information Service are available at <http://global-tide.nmdis.org.cn>. The *Chl* and *PAR* from Level-3 products of MODIS are available at <https://oceancolor.gsfc.nasa.gov/l3>. The wind field data from CCMP Wind Vector Analysis Product (L3, version 2.0) are available at <https://data.remss.com/ccmp>. The code of the random forest method is available at <https://github.com/karpathy/Random-Forest-Matlab>. The other data are available from the corresponding author upon reasonable request.

Supplementary Materials

Text S1 and S2

Figs. S1 to S8

Tables S1 to S4

References

1. Mahadevan A, D'Asaro E, Lee C, Perry MJ. Eddy-driven stratification initiates North Atlantic spring phytoplankton blooms. *Science*. 2012;337(6090):54–58.
2. Henson SA, Laufkötter C, Leung S, Giering SLC, Palevsky HI, Cavan EL. Uncertain response of ocean biological carbon export in a changing world. *Nat Geosci*. 2022;15(4):248–254.
3. Marañón E. Cell size as a key determinant of phytoplankton metabolism and community structure. *Annu Rev Mar Science*. 2015;7(1):241–264.
4. Briggs N, Dall'Olmo G, Claustre H. Major role of particle fragmentation in regulating biological sequestration of CO_2 by the oceans. *Science*. 2020;367(6479):791–793.
5. Lacour L, Ardyna M, Stec KF, Claustre H, Prieur L, Poteau A, D'Alcala MR, Iudicone D. Unexpected winter phytoplankton blooms in the North Atlantic subpolar gyre. *Nat Geosci*. 2017;10(11):836–839.
6. Boyd PW, Claustre H, Levy M, Siegel DA, Weber T. Multi-faceted particle pumps drive carbon sequestration in the ocean. *Nature*. 2019;568(7752):327–335.
7. Dickey T, Lewis M, Chang G. Optical oceanography: Recent advances and future directions using global remote sensing and in situ observations. *Rev Geophys*. 2006;44(1):RG1001.
8. Su X, Sutarlie L, Loh XJ. Sensors, biosensors, and analytical technologies for aquaculture water quality. *Research*. 2020;2020:Article 8272705.
9. Chai F, Johnson KS, Claustre H, Xing X, Wang Y, Boss E, Riser S, Fennel K, Schofield O, Sutton A. Monitoring ocean biogeochemistry with autonomous platforms. *Nat Rev Earth Environ*. 2020;1(6):315–326.
10. Dore JE, Lukas R, Sadler DW, Church MJ, Karl DM. Physical and biogeochemical modulation of ocean acidification in the central north pacific. *Proc Natl Acad Sci U S A*. 2009;106(30):12235–12240.
11. Hostetler CA, Behrenfeld MJ, Hu Y, Hair JW, Schullien JA. Spaceborne lidar in the study of marine systems. *Annu Rev Mar Science*. 2018;10(1):121–147.
12. Liu D, Xu P, Zhou Y, et al. Lidar remote sensing of seawater optical properties: Experiment and Monte Carlo simulation. *IEEE Trans Geosci Remote Sens*. 2019;57(11):9489–9498.
13. Behrenfeld MJ, Gaube P, Della Penna A, O'Malley RT, Burt WJ, Hu Y, Bontempi PS, Steinberg DK, Boss ES, Siegel DA, et al. Global satellite-observed daily vertical migrations of ocean animals. *Nature*. 2019;576(7786):257–261.
14. Jamet C, Ibrahim A, Ahmad Z, Angelini F, Babin M, Behrenfeld MJ, Boss E, Cairns B, Churnside J, Chowdhary J, et al. Going

- beyond standard ocean color observations: Lidar and polarimetry. *Front Mar Sci*. 2019;6:Article 251.
15. Behrenfeld MJ, Hu Y, O'Malley RT, Boss ES, Hostetler CA, Siegel DA, Sarmiento JL, Schulien J, Hair JW, Lu X, et al. Annual boom–bust cycles of polar phytoplankton biomass revealed by space-based lidar. *Nat Geosci*. 2017;10(2):118–122.
 16. Xu P, Liu D, Shen Y, Chen Y, Zhang H, Ye Z, Jiang C, Zhou Y, Liu Q, Liu C. Design and validation of a shipborne multiple-field-of-view lidar for upper ocean remote sensing. *J Quant Spectrosc Radiat Transf*. 2020;254:Article 107201.
 17. Gordon HR. Interpretation of airborne oceanic lidar: Effects of multiple scattering. *Appl Opt*. 1982;21(16):2996–3001.
 18. Harmel T, Hieronymi M, Slade W, Röttgers R, Roullier F, Chami M. Laboratory experiments for inter-comparison of three volume scattering meters to measure angular scattering properties of hydrosols. *Opt Express*. 2016;24(2):A234–A256.
 19. Sun H, Wang S, Hu X, Liu H, Zhou X, Huang J, Cheng X, Sun F, Liu Y, Liu D. Detection of surface defects and subsurface defects of polished optics with multisensor image fusion. *Photonix*. 2022;3(1):6.
 20. Wang N, Zhang K, Shen X, Wang Y, Li J, Li C, Mao J, Malinka A, Zhao C, Russell LM, et al. Dual-field-of-view high-spectral-resolution lidar: Simultaneous profiling of aerosol and water cloud to study aerosol-cloud interaction. *Proc Natl Acad Sci U S A*. 2022;119(10):Article e2110756119.
 21. Jiang B, Zhu S, Ren L, Shi L, Zhang X. Simultaneous ultraviolet, visible, and near-infrared continuous-wave lasing in a rare-earth-doped microcavity. *Adv Photonics*. 2022;4(4):Article 046003.
 22. Li Y, Zheng W, Huang F. All-silicon photovoltaic detectors with deep ultraviolet selectivity. *Photonix*. 2020;1(1):15.
 23. Jia L, Zheng W, Huang F. Vacuum-ultraviolet photodetectors. *Photonix*. 2020;1(1):22.
 24. Kostadinov TS, Siegel DA, Maritorena S. Global variability of phytoplankton functional types from space: Assessment via the particle size distribution. *Biogeosciences*. 2010;7(10):3239–3257.
 25. Zhou Y, Chen Y, Zhao H, Jamet C, Dionisi D, Chami M, di Girolamo P, Churnside JH, Malinka A, Zhao H, et al. Shipborne oceanic high-spectral-resolution lidar for accurate estimation of seawater depth-resolved optical properties. *Light Sci Appl*. 2022;11(1):261.
 26. Groß S, Esselborn M, Weinzierl B, Wirth M, Fix A, Petzold A. Aerosol classification by airborne high spectral resolution lidar observations. *Atmos Chem Phys*. 2013;13:2487–2505.
 27. Ke J, Sun Y, Dong C, Zhang X, Wang Z, Lyu L, Zhu W, Ansmann A, Su L, Bu L, et al. Development of china's first space-borne aerosol-cloud high-spectral-resolution lidar: Retrieval algorithm and airborne demonstration. *Photonix*. 2022;3(1):17.
 28. Wang N, Xiao D, Veselovskii I, Wang Y, Russell LM, Zhao C, Guo J, Li C, Gross S, Liu X, et al. This is fast: Multivariate full-permutation based stochastic forest method—Improving the retrieval of fine-mode aerosol microphysical properties with multi-wavelength lidar. *Remote Sens Environ*. 2022;280:Article 113226.
 29. Chen S, Tong B, Russell LM, Wei J, Guo J, Mao F, Liu D, Huang Z, Xie Y, Qi B, et al. Lidar-based daytime boundary layer height variation and impact on the regional satellite-based pm2.5 estimate. *Remote Sens Environ*. 2022;281:Article 113224.
 30. Lin P, Cheng P, Gan J, Hu J. Dynamics of wind-driven upwelling off the northeastern coast of Hainan island. *J Geophys Res*. 2016;121(2):1160–1173.
 31. Reynolds RA, Stramski D, Wright VM, Woźniak SB. Measurements and characterization of particle size distributions in coastal waters. *J Geophys Res*. 2010;115(C8):C08024.
 32. McCluskey E, Brewin B, Vanhellemont Q, Jones O, Cummings D, Tilstone G, Jackson T, Widdicombe C, Woodward EMS, Harris C, et al. On the seasonal dynamics of phytoplankton chlorophyll-a concentration in nearshore and offshore waters of Plymouth, in the english channel: Enlisting the help of a surfer. *Oceans*. 2022;3:125–146.
 33. Shi W, Wang M. Characterization of suspended particle size distribution in global highly turbid waters from viirs measurements. *J Geophys Res*. 2019;124(6):3796–3817.
 34. Chen P, Jamet C, Liu D. Lidar remote sensing for vertical distribution of seawater optical properties and chlorophyll-a from the East China Sea to the South China Sea. *IEEE Trans Geosci Remote Sens*. 2022;60:1–21.
 35. Guidi L, Chaffron S, Bittner L, Eveillard D, Larhlimi A, Roux S, Darzi Y, Audic S, Berline L, Brum JR, et al. Plankton networks driving carbon export in the oligotrophic ocean. *Nature*. 2016;532(7600):465–470.
 36. Siegel DA, Buesseler KO, Doney SC, Sailley SF, Behrenfeld MJ, Boyd PW. Global assessment of ocean carbon export by combining satellite observations and food-web models. *Global Biogeochem Cycles*. 2014;28(3):181–196.
 37. Schulien JA, Behrenfeld MJ, Hair JW, Hostetler CA, Twardowski MS. Vertically-resolved phytoplankton carbon and net primary production from a high spectral resolution lidar. *Opt Express*. 2017;25(12):13577–13587.
 38. Kostadinov TS, Siegel DA, Maritorena S. Retrieval of the particle size distribution from satellite ocean color observations. *J Geophys Res*. 2009;114(C9):C09015.
 39. Buonassissi CJ, Dierssen HM. A regional comparison of particle size distributions and the power law approximation in oceanic and estuarine surface waters. *J Geophys Res*. 2010;115(C10):C10028.
 40. Renosh PR, Schmitt FG, Loisel H, Sentchev A, Mériaux X. High frequency variability of particle size distribution and its dependency on turbulence over the sea bottom during re-suspension processes. *Cont Shelf Res*. 2014;77:51–60.
 41. Xi H, Larouche P, Michel C, Tang S. Beam attenuation, scattering and backscattering of marine particles in relation to particle size distribution and composition in Hudson bay (Canada). *J Geophys Res*. 2015;120(5):3286–3300.
 42. Qiu Z, Sun D, Hu C, Wang S, Zheng L, Huan Y, Peng T. Variability of particle size distributions in the bohai sea and the yellow sea. *Remote Sens*. 2016;8(11):Article 949.
 43. Gomathisankaraprasad Harharasudhan V, Shanmugam P. Modelling the particulate backscattering coefficients of turbid and productive coastal waters. *Ocean Sci J*. 2019;54(2):147–164.
 44. Reynolds RA, Stramski D. Variability in oceanic particle size distributions and estimation of size class contributions using a non-parametric approach. *J Geophys Res*. 2021;126(12):Article e2021JC017946.
 45. Loisel H, Nicolas J-M, Sciandra A, Stramski D, Poteau A. Spectral dependency of optical backscattering by marine particles from satellite remote sensing of the global ocean. *J Geophys Res*. 2006;111(C9):C09024.
 46. Boss E, Pegau W, Gardner W, Zaneveld JRV, Barnard AH, Twardowski MS, Chang GC, Dickey TD. Spectral particulate attenuation and particle size distribution in the bottom boundary layer of a continental shelf. *J Geophys Res*. 2001;106:9509–9516.

47. Jackson T, Sathyendranath S, Mélin F. An improved optical classification scheme for the ocean colour essential climate variable and its applications. *Remote Sens Environ.* 2017;203:152–161.
48. Qing S, Cui T, Tang J, Song Q, Liu R, Bao Y. An optical water classification and quality control model (oc_qc model) for spectral diffuse attenuation coefficient. *ISPRS J Photogramm Remote Sens.* 2022;189:255–271.
49. Collister BL, Zimmerman RC, Sukenik CI, Balch WM, Hill VJ. The influence of particle concentration and bulk characteristics on polarized oceanographic lidar measurements. *Limnol Oceanogr.* 2022;67(6):1374–1387.
50. Li T, Bai Y, He X, Xie Y, Chen X, Gong F, Pan D. Satellite-based estimation of particulate organic carbon export in the northern South China Sea. *J Geophys Res.* 2018;123(11):8227–8246.
51. Smith RC, Baker KS. Optical properties of the clearest natural waters (200–800 nm). *Appl Opt.* 1981;20(2):177–184.
52. Lee Z, Wei J, Voss K, Lewis M, Bricaud A, Huot Y. Hyperspectral absorption coefficient of "pure" seawater in the range of 350–550nm inverted from remote sensing reflectance. *Appl Opt.* 2015;54(3):546–558.
53. Mobley C, Sundman L, Boss E. Phase function effects on oceanic light fields. *Appl Opt.* 2002;41:1035–1050.
54. Rinaldo A, Maritan A, Cavender-Bares K, Chisholm SW. Cross-scale ecological dynamics and microbial size spectra in marine ecosystems. *Proc R Soc B Biol Sci.* 2002;269:2051–2059.
55. Malinka AV, Zege EP. Analytical modeling of raman lidar return, including multiple scattering. *Appl Opt.* 2003;42(6):1075–1081.
56. Liu Q, Cui X, Jamet C, Zhu X, Mao Z, Chen P, Bai J, Liu D. A semianalytic Monte Carlo simulator for spaceborne oceanic lidar: Framework and preliminary results. *Remote Sens.* 2020;12:2820.
57. Gordon HR, Morel AY. *Remote assessment of ocean color for interpretation of satellite visible imagery: A review.* New York (NY): Springer; 1983.
58. Churnside JH, Sullivan JM, Twardowski MS. Lidar extinction-to-backscatter ratio of the ocean. *Opt Express.* 2014;22(15):18698–18706.
59. Pollard RT, Rhines PB, Thompson RORY. The deepening of the wind-mixed layer. *Geophys Fluid Dyn.* 1973;4(4):381–404.
60. Breiman L. Random forest. *Mach Learn.* 2001;45:5–32.