



**HAL**  
open science

## Feeding and growth variations affect $\delta^{13}\text{C}$ and $\delta^{15}\text{N}$ budgets during ontogeny in a lepidopteran larva

Samuel Charberet, Annick Maria, David Siaussat, Isabelle Gounand, Jérôme Mathieu

### ► To cite this version:

Samuel Charberet, Annick Maria, David Siaussat, Isabelle Gounand, Jérôme Mathieu. Feeding and growth variations affect  $\delta^{13}\text{C}$  and  $\delta^{15}\text{N}$  budgets during ontogeny in a lepidopteran larva. Peer Community Journal, 2023, 3, 10.24072/pcjournal.265 . hal-04254584

**HAL Id: hal-04254584**

**<https://hal.science/hal-04254584>**

Submitted on 23 Oct 2023

**HAL** is a multi-disciplinary open access archive for the deposit and dissemination of scientific research documents, whether they are published or not. The documents may come from teaching and research institutions in France or abroad, or from public or private research centers.

L'archive ouverte pluridisciplinaire **HAL**, est destinée au dépôt et à la diffusion de documents scientifiques de niveau recherche, publiés ou non, émanant des établissements d'enseignement et de recherche français ou étrangers, des laboratoires publics ou privés.

RESEARCH ARTICLE

Published  
AAAA-MM-DD

Cite as

Samuel M. Charberet, Annick Maria, David Siaussat, Isabelle Gounand and Jérôme Mathieu (2023) *Feeding and growth variations affect  $\delta^{13}\text{C}$  and  $\delta^{15}\text{N}$  budgets during ontogeny in a lepidopteran larva*, Peer Community Journal, 3: XX.

Correspondence

[samuelcharberet@gmail.com](mailto:samuelcharberet@gmail.com)

Peer-review

Peer reviewed and recommended by  
PCI Ecology,  
<https://doi.org/10.24072/pci.ecology.100515>



This article is licensed under the Creative Commons Attribution 4.0 License.

## Feeding and growth variations affect $\delta^{13}\text{C}$ and $\delta^{15}\text{N}$ budgets during ontogeny in a lepidopteran larva

Samuel M. Charberet <sup>1</sup>, Annick Maria<sup>1</sup>, David Siaussat <sup>1</sup>, Isabelle Gounand <sup>1</sup>, and Jérôme Mathieu <sup>1</sup>

Volume 3 (2023), article XX

<https://doi.org/10.24072/pcjournal.265>

### Abstract

Isotopes are widely used in ecology to study food webs and physiology. The fractionation observed between trophic levels in nitrogen and carbon isotopes, explained by isotopic biochemical selectivity, is subject to important within-trophic level variations, leading to imprecision in trophic level estimation. Understanding the drivers of these variations is thus important to improve the study of food webs. In this study, we characterized this variation by submitting *Spodoptera littoralis* larvae to a gradient of starvation levels, a factor that we hypothesized would change the trophic fractionation between individuals. The various growth rates that were induced from these starvation levels resulted in a  $\sim 1$ -1.5‰ within-trophic level variation of the trophic fractionation in both carbon and nitrogen, which is substantial compared to the 3-4‰ classically associated with between-trophic levels variations. Hence starved animals sampled *in natura* may be ranked at a higher trophic level than they really are. We were able to gain an understanding of the effect of growth rate on isotopes fluxes between three easy-to-measure biological materials, food, organism and its wastes (frass), giving insight into physiological processes at play but also conveying helpful information to the sampling framework of field studies.

<sup>1</sup>Sorbonne Université, CNRS, UPEC, CNRS, IRD, INRAE Institute of Ecology and Environmental Sciences (iEES Paris), Paris, F-75005, France.

## Contents

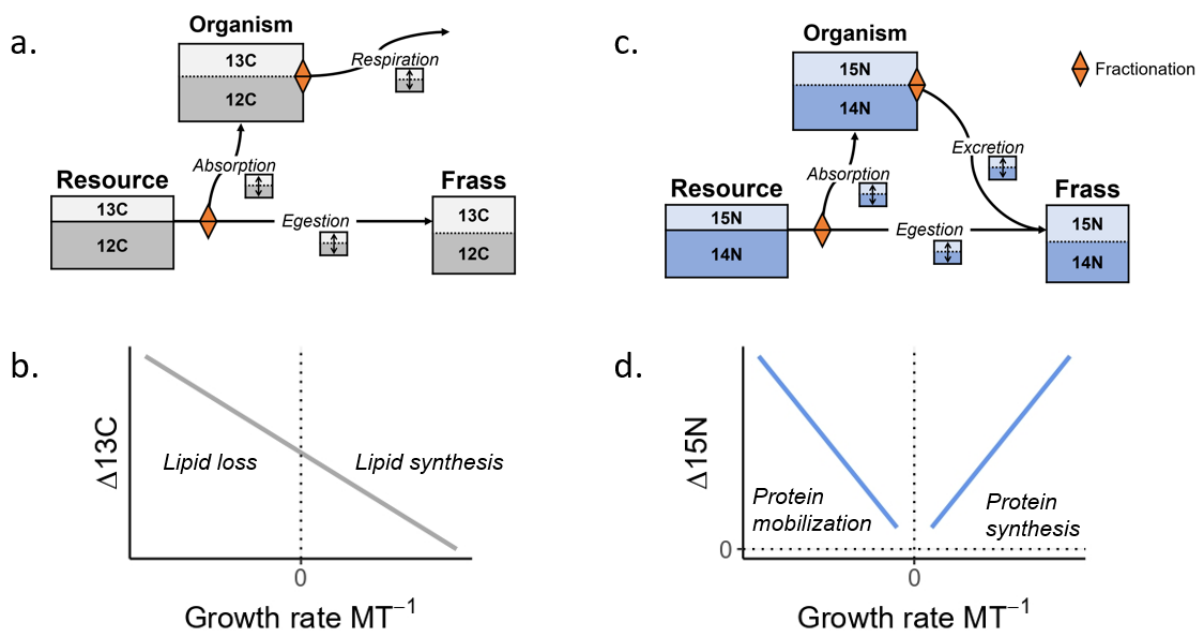
Introduction .....	2
Material and methods .....	4
Results .....	6
Discussion .....	7
Acknowledgements .....	8
Fundings .....	8
Conflict of interest disclosure .....	8
Data, script, code, and supplementary information availability .....	9
References .....	9

## Introduction

Stable isotopes are frequently used to understand fluxes of nutrients in ecosystems as well as trophic position and animal body condition (Post, 2002). The systematic differences in stable isotope levels between the resource and the tissue of a consumer - the trophic fractionation, here denoted  $\Delta^{13}\text{C}$  and  $\Delta^{15}\text{N}$  - are used to estimate the trophic level of consumers. It occurs because isotopes of different masses have slightly different kinetics during biochemical processes (i.e. respiration or absorption, see Fry, 2006). The  $^{15}\text{N}$  level of the consumer is usually increased by 3-4‰ relative to its resource because animals retain  $^{15}\text{N}$  preferentially over  $^{14}\text{N}$  (Martinez del Rio, N Wolf, Carleton, and Gannes, 2009). Carbon fractionation, on the other hand, might vary in a population due to differences in the abundance of *de novo* synthesized lipids in the consumer's body (Melzer and H Schmidt, 1987). However, the within-trophic level variability of trophic fractionation sometimes impedes accurate trophic level estimation (Martinez del Rio, N Wolf, Carleton, and Gannes, 2009). Understanding the drivers of these variations is crucial to improve our estimations.

Most of the proposed mechanisms to explain  $\Delta^{15}\text{N}$  variation involve diet protein quality and metabolism (Starck and Wang, 2005). However, nutritional status, determined by the resource availability in the environment (Doi, Akamatsu, and González, 2017; Trochine, Diaz Villanueva, Balseiro, and Modenutti, 2019), can influence trophic fractionation. Physiological responses to nutritional stress involve adjustments in digestion, reserve utilization and metabolic rate. As these processes change in rate (see fig.1.a. and c.), biochemical processes that determine absorption, respiration and excretion, also change, therefore impacting  $\Delta^{15}\text{N}$  and  $\Delta^{13}\text{C}$ . Total food restriction, which causes weight loss (corresponding to negative growth rates in fig.1.b. and d.), has the overall tendency to increase heavy isotopes content ( $^{15}\text{N}$  and  $^{13}\text{C}$ ), leading to an overestimation of the trophic level (see Adams and Sterner, 2000; Boag, Neilson, and Scrimgeour, 2006; Gorokhova and Hansson, 1999; Haubert, Langel, Scheu, and Ruess, 2005; McCue, 2008; Oelbermann and Scheu, 2002; Olive, Pinnegar, Polunin, Richards, and Welch, 2003; O Schmidt, Scrimgeour, and Curry, 1999). But more rarely have the effect of various feeding levels been considered, with no convincing conclusion to this day (Hertz, Trudel, Cox, and Mazumder, 2015). To improve the estimation of trophic levels by including these mechanisms, we need a detailed understanding of the relationship between variation in nutritional status and trophic fractionation.

Across this gradient in nutritional status, an important threshold is the maintenance feeding level (zero growth rate in fig.1.b. and d.). Below the feeding level required for maintenance, body mass decreases, and adaptations in lipids and proteins metabolism are triggered. Lipids typically contain proportionally less  $^{13}\text{C}$  than proteins and carbohydrates (DeNiro and Epstein, 1977; McConnaughey and McRoy, 1979). A shrinkage of body lipid content should thus result in an



**Figure 1** – Isotopes routing and main hypotheses. a. & c. The three analyzed matrices, their relative (not-to-scale) content of isotopes, fluxes between them, as well as nodes where fractionation can occur (diamonds). The exact proportion of isotopes is not intended to represent reality faithfully but rather to illustrate the dynamical aspect of trophic fractionation. b. & d. Hypothesized relationship between trophic fractionation and growth rate for nitrogen and carbon. a. Most carbon is lost through either respiration or egestion and marginally through excretion. c. On the contrary, nitrogen is solely dropped through either egestion or excretion, with the impossibility of distinguishing their contribution only based on frass analysis. b. The hypothesized relationship between  $\Delta^{13}\text{C}$  and growth rate, measured as mass gained per unit of time  $\text{MT}^{-1}$ . We expect a negative relationship because of the increasing proportion of  $^{13}\text{C}$ -poor *de novo* synthesized lipids, thus modulating the respiration fractionation. d. Hypothesized relationship between  $\Delta^{15}\text{N}$  and growth rate. High growth rates should increase protein synthesis and breakdown rates, which retain preferentially  $^{15}\text{N}$ , and very low intake rates (weight loss) should increase protein catabolism, also increasing  $\Delta^{15}\text{N}$ , both playing on the excretion fractionation.

increase in  $\Delta^{13}\text{C}$  compared to high feeding levels (Julia Gaye-Siessegger, Ulfert Focken, Muetzel, Hansjörg Abel, and Klaus Becker, 2004), where the organism might be able to accumulate  $^{13}\text{C}$ -poor lipid reserves, therefore decreasing  $\Delta^{13}\text{C}$  (fig.1.a.).

Regarding nitrogen, low feeding levels are classically associated with an increase in  $\Delta^{15}\text{N}$  due to asymmetrical isotopic routing during protein mobilization for energetic catabolism (KA Hatch, 2012, see fig.1.c.). But high feeding levels, which are often accompanied by high growth rates, can also be accompanied by an increase in  $\Delta^{15}\text{N}$  (Sick, Roos, Saggau, Haas, Meyn, Walch, and Trugo, 1997, Focken, 2001). Indeed, due to an increase in protein synthesis and breakdown rates when the animal is growing fast, removal of  $^{14}\text{N}$  is intensified, thus enriching the consumer in  $^{15}\text{N}$  and increasing  $\Delta^{15}\text{N}$  (fig.1.c.). As a result, both very low and very high intake rates might increase  $\Delta^{15}\text{N}$ , but due to different processes, protein mobilization at low intake rates in a weight loss context and protein synthesis and breakdown rates at high intake rates in a growth context.

Moreover, as the gut filling level decreases with underfeeding, the food passage time increases and the biochemical conditions in the gut change. This change in temporal and chemical conditions might alter the isotopic fractionation right from the absorption stage (HL Schmidt, Robins, and Werner, 2015). The relative decrease in the concentration of food in the near-empty gut might increase the enzymes' accessibility and, in turn, the absorption of heavy isotopes. As a whole, trophic fractionation should depend on both nutritional status and body mass dynamics (Sears, SA Hatch, and O'Brien, 2009, Williams, Buck, Sears, and Kitaysky, 2007; see also KA

Hatch, 2012 for a review), but these effects remain poorly investigated, especially in varying feeding levels (see Gaye-Siessegger, Focken, HJ Abel, and Becker, 2007).

Elucidating how the nutritional status modifies isotopic fractionation in a growing organism could shed light on the within-trophic level variability of the estimated trophic level and should be of interest for field studies as well. We conducted a feeding level experiment during the larval development of the cotton leaf worm *Spodoptera littoralis*, including severe food restriction, three intermediate restriction levels, and an *ad libitum* level, which corresponded to a range of growth rates. We assessed  $^{15}\text{N}$  and  $^{13}\text{C}$  budgets, measuring isotopic fractionations between food, body and frass (excretion + egestion).

More specifically, we wanted to test the hypotheses that:

- (1)  $\Delta^{15}\text{N}$  should increase at negative growth rates due to protein catabolism during weight loss and increase at positive growth rates due to faster protein synthesis and oxidation. Around maintenance level, as these two processes slow,  $\Delta^{15}\text{N}$  should decrease. Overall we should thus obtain a V-shaped relationship between  $\Delta^{15}\text{N}$  and growth rate (fig.1.d.).
- (2)  $\Delta^{13}\text{C}$  should decrease with growth rate because of the accumulation of  $^{13}\text{C}$ -poor lipid stores (fig.1.c.).
- (3) The relative absorption of  $^{13}\text{C}$  might increase at low feeding levels as both gut passage time and digestion efficiency increase.

## Material and methods

### Study system

*S. littoralis* larvae from a laboratory strain were reared on a semi-artificial diet for the total duration of the experiment. We provide the detailed food composition in Supplementary Information, table 1. The climate chamber was set at 23 °C, 60–70% relative humidity, and a 16:8 light/dark cycle (Hinks and Byers, 1976). In these rearing conditions and with continuous access to food, the larvae go through 7 instars before entering metamorphosis (chrysalid stage). To enable proper mass balance calculation and prevent cannibalism, we isolated the 400 larvae intended for the experiments at the 6th instar in individual 30 mL circular polypropylene boxes. We provided them *ad libitum* food until 6th moult completion (start of the 7th instar).

### Experimental design

We randomly assigned each of the 400 7th instar larvae to one of five food provision levels for the duration of the experiment. Food was kept the same as before the start of the feeding level experiment. The food intake level was fixed to either 120, 240, 360, 480 or 900 mg of food per day (fresh weight), depending on the larva. We had beforehand estimated the average maximal individual intake rate for 7th instar larvae and obtained  $595 \pm 43$  mg/day. There were 80 individuals for each tested food intake level. We conducted this study over 10 weeks (10 temporal blocks), performing the experiment with 40 individuals each week, 8 for each food intake level. Individual measurements and sample collections took place over two or three days depending on whether the larva pre-pupation occurred on the third day of the 7th instar (in which case measures were taken during 2 days) or later (in which case measures were taken during 3 days).

### Experimental workflow

During the experiment, each larva was given the defined amount of freshly prepared food and weighed every day. Food subsamples were taken at every food preparation for subsequent chemical analysis. We collected and weighed daily food leftovers and frass produced by each larva to assess the actual intake and egestion rates. Food leftovers and frass were quickly stored at -20 °C, and later dried for 72 hours at 60 °C in an oven, to measure their dry mass. On the third day, half the larvae were quickly stored at -20 °C, dried for 72 hours at 60 °C in an oven, and their dry mass was measured. The other half of the individuals was left in the rearing chambers

to later investigate the effect of food restriction on mortality, emergence success and body mass (not analyzed here).

### Chemical analyses

Chemical analyses required that we pooled samples to obtain enough analyzable material. Hence groups of 4 caterpillars reared over the same week and on the same feeding level were composed, 2 that were pooled together for chemical analysis, and 2 that were left alive until emergence. The analyzed frass was a pooled sample of all 4 individuals.

All samples - food, larvae, and frass - were ground to a fine powder using a mill. Total carbon, total nitrogen, as well as  $\delta^{13}\text{C}$  and  $\delta^{15}\text{N}$  were measured using an elemental analyser coupled to a mass-spectrometer (Flash HT - Delta V Advantage, ThermoFisher). We checked for measurement errors using aromatic polyimide (EMA-P2) as standard.

### Starvation proxy and isotopic data

Intake rate alone does not accurately represent the nutritional status. Rather, it depends on the balance between intake and requirements, the latter largely depending on body mass. We, therefore, used mass-specific ingestion rate (MSIR) as an indicator of nutritional status. Low values of mass-specific ingestion rate define intense starvation, whereas high values of mass-specific ingestion rate represent sufficient intake.

$$MSIR_j = \frac{\sum_{i \in j} l_i}{\left(\frac{1}{4} \sum_{i \in j} d_i\right) \left(\frac{\sum_{i \in j} ib_i + \sum_{i \in j} fb_i}{2}\right)}$$

with  $l_i$  the total fresh mass of food ingested by the individual  $i$  of the group  $j$  over the course of the 7th instar,  $d_i$  the number of days spent in 7th instar by individual  $i$ ,  $ib_i$  the initial body mass of individual  $i$ , and  $fb_i$  the final body mass of individual  $i$ .

Pee Dee Belemnite (PDB) and atmospheric nitrogen were used as standards for  $\delta^{13}\text{C}$  and  $\delta^{15}\text{N}$ , respectively. Isotopic data for sample  $s$  are reported using delta notation:

$$\delta^{13}\text{C}_s = 1000 \left[ \frac{^{13}\text{C}_s / ^{12}\text{C}_s}{^{13}\text{C}_{\text{PDB}} / ^{12}\text{C}_{\text{PDB}}} - 1 \right]$$

and

$$\delta^{15}\text{N}_s = 1000 \left[ \frac{^{15}\text{N}_s / ^{14}\text{N}_s}{^{15}\text{N}_{\text{air}} / ^{14}\text{N}_{\text{air}}} - 1 \right]$$

The trophic fractionation, *i.e.* the difference in  $\delta^{13}\text{C}$  or  $\delta^{15}\text{N}$  between larvae and food, was computed as follows:

$$\Delta^{13}\text{C} = \delta^{13}\text{C}_{\text{larvae}} - \delta^{13}\text{C}_{\text{food}}$$

and

$$\Delta^{15}\text{N} = \delta^{15}\text{N}_{\text{larvae}} - \delta^{15}\text{N}_{\text{food}}$$

We computed the ratio of absorption efficiencies between the two carbon isotopes (thereafter C IAER) to characterize how isotopes are differentially absorbed. This metric characterizes the absorption process, which is one of the two fluxes, along with respiration, determining carbon trophic fractionation (fig.1.a.). We did not compute this metric for nitrogen because, unlike carbon, nitrogen excretion products also end up in insect frass, and it is, therefore, impossible to disentangle absorption from excretion effects using this metric (fig.1.c.). Moreover, as samples are heated during drying, some ammonium might volatilize, biasing the mass balance (Harrison, 1995).

$$C \text{ IAER} = 1000 \left( \frac{AE_{^{13}\text{C}}}{AE_{^{12}\text{C}}} - 1 \right)$$

with  $AE_i$  the proportion of ingested isotope which is assimilated, and not egested/excreted, over the 7th instar, given in % dry weight:

$$AE_{jk} = 1 - \frac{C_{Ejk} E_j}{C_{ljk} I_j}$$

with  $C_{Ejk}$  the proportion of isotope  $k$  in the frass of the group  $j$ ,  $E_j$  the summed mass of frass produced by the four larvae of the group  $j$  and with  $C_{ljk}$  the proportion of isotope  $k$  in the food of the group  $j$ ,  $I_j$  the summed mass of food ingested by the four larvae of the group  $j$ . Please refer to Appendix 2 for a detailed calculation of  $C_{Ejk}$  and  $C_{ljk}$ .

## Statistics

To test the effect of starvation and subsequent variation in growth rate (GR) on the trophic fractionation and relative carbon isotope absorptions, we used linear regressions. We chose to test the effect of growth rates on  $\Delta^{15}\text{N}$  and  $\Delta^{13}\text{C}$ , and the effect of mass-specific intake rate on C IAER. Details on modelling choices are provided in Appendix 3.

## Results

**Table 1** – Summary of linear models describing the influence of growth rate and mass-specific ingestion rate (MSIR) on the trophic fractionation ( $\Delta$ ), and carbon isotope absorption efficiencies ratio (C IAER), respectively.

Equation	n	$R^2$	F	p-value
$\Delta^{13}\text{C} = -0.0032 \times GR + -1.7$	92	0.35	48	$p < 0.01$
$\Delta^{15}\text{N} = 0.0054 \times GR + 0.32$	92	0.53	100	$p < 0.01$
$\text{C IAER} = -0.65 \times \text{MSIR} - 0.97$	100	0.28	38	$p < 0.01$

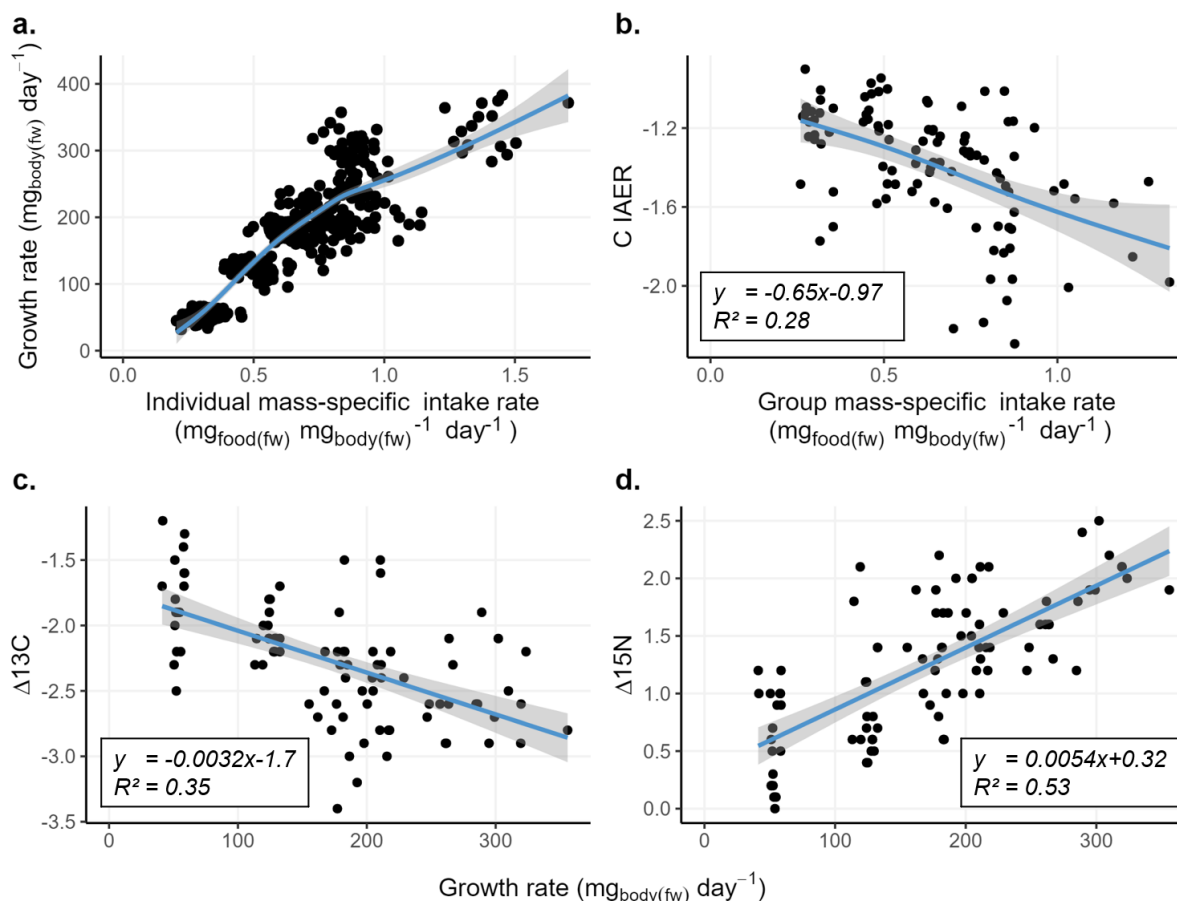
Despite strong starvation conditions, we were not able to force negative growth rate (fig.2.a.). We were therefore unable to test the relationships between trophic fractionation -  $\Delta^{13}\text{C}$  and  $\Delta^{15}\text{N}$  - and growth rates for negative growth rates. Here, we describe these relationships for positive growth rates only.

### Trophic fractionation

As expected, larvae were always richer in  $^{15}\text{N}$  than the food they ate ( $\Delta^{15}\text{N} > 0$  for all larvae, see fig.2.d.). There was a clear positive correlation between  $\Delta^{15}\text{N}$  and (positive) growth rate ( $F = 100$ ,  $p < 0.01$ ,  $R^2 = 0.53$ ; table 1.) in accordance with our hypothesis (right side of the graph in fig.1.d). As for carbon, larvae were always poorer in  $^{13}\text{C}$  than their food ( $\Delta^{13}\text{C} < 0$  for all larvae, fig.2.c.), and this difference was exacerbated by a growth rate increase ( $F = 48$ ,  $p < 0.01$ ,  $R^2 = 0.35$ ; table 1.), also in accordance with our hypothesis (fig.1.c.). In both cases, the  $\Delta^{13}\text{C}$  and  $\Delta^{15}\text{N}$  spanned over a range of  $\sim 2.5$  ‰, of which 1 ‰ in the case of carbon, and 1.5 ‰ can be fully attributed to growth rate variation. These variations are substantial vis-à-vis the one classically attributed to a one trophic level shift (3-4 ‰),

### Isotope absorption efficiencies ratio (IAER)

The relative absorption of  $^{12}\text{C}$  and  $^{13}\text{C}$  depended on the mass-specific intake rate.  $^{12}\text{C}$  was systematically better absorbed than  $^{13}\text{C}$ , and this effect increased with feeding level ( $R^2 = 0.28$ ,  $F = 38$ ,  $p < 0.01$ , fig.2.b.).



**Figure 2** – Growth and isotopic analyses. a. Individual growth rate as a function of mass-specific intake rate. The fitted curve is a generalized additive model. b. Carbon isotope absorption efficiencies ratio (IAER) as a function of mass-specific intake rate measured at the level of a group of 4 caterpillars, hence the term “group”. c. Carbon trophic ( $\Delta^{13}\text{C}$ ) fractionation as a function of growth rate. d. Nitrogen trophic fractionation ( $\Delta^{15}\text{N}$ ) as a function of growth rate.

## Discussion

In agreement with our prediction,  $\Delta^{15}\text{N}$  increases with growth rate, up to 1.5 ‰, which is substantial compared to differences typically associated with trophic fractionation (3–4 ‰). Our results agree with previous work showing that  $\Delta^{15}\text{N}$  is sensitive to growth, at least in some tissues, as highlighted by Sick, Roos, Saggau, Haas, Meyn, Walch, and Trugo, 1997. We show that food limitation does not always increase  $\Delta^{15}\text{N}$  but rather depends on the underfeeding intensity and whether underfeeding is concurrent with growth. This contrasts with the classic view that  $\Delta^{15}\text{N}$  should increase in starved individuals owing to protein depletion for energetic requirements. At least two studies suggested that this increase in  $\Delta^{15}\text{N}$  at high growth rates could be due to higher rates of deamination and protein synthesis at higher intake rates (Sick, Roos, Saggau, Haas, Meyn, Walch, and Trugo, 1997, Focken, 2001). Combining both predictions leads to a more comprehensive view of the effect of feeding level on nitrogen trophic fractionation. Despite very low intake rates, down to 10% of *ad libitum* levels, no weight loss was observed in our experiment, leaving the complete shape of the relationship between  $\Delta^{15}\text{N}$  and growth rate only speculative, although the fact that most studies show an increase of  $\Delta^{15}\text{N}$  with starvation intensity or fasting duration in a negative growth context, whereas we find the contrary for positive growth rates, suggest such a relationship (Martinez del Rio and BO Wolf, 2005). But whether a V-shaped relation can arise or not requires further investigation.

On the other hand,  $\Delta^{13}\text{C}$  decreased with growth rate and intake level, which is consistent



with previous findings (Doi, Akamatsu, and González, 2017). This is likely due to the possibility of constituting  $^{13}\text{C}$ -poor lipid reserves at high growth rates (DeNiro and Epstein, 1977, McConnaughey and McRoy, 1979). To conclude, both  $\Delta^{13}\text{C}$  and  $\Delta^{15}\text{N}$  were affected by feeding level and growth rate. This shows that when assessing trophic levels using isotopic data, the nutritional status of the individual can bias the estimate. Despite being hard to estimate without destructive measurements, at least severe starvation and underfeeding might be detectable through environmental conditions. Physiologically, the nutritional state at which an individual grows can be assessed through age-size comparison, sclerochronology if applicable (Castanet, 1994), or biochemical indicators (e.g. ketone bodies, Chowdhury, Jiang, Rothman, and Behar, 2014; Shah and Bailey, 1976).

Diet indicators are also prone to estimate error owing to variable nutritional status. The carbon isotopic signature of herbivores is sometimes used to estimate if their diet is composed primarily of C4 plants, rich in  $^{13}\text{C}$  ( $-12$  to  $-20$  ‰), or of the  $^{13}\text{C}$ -poorer C3 plants ( $-25$  to  $-32$  ‰, O'Leary, 1981). Elevated  $\delta^{13}\text{C}$  values in the consumer can hence indicate a predominance of C4 plants in the diet. The proportion of C3 in the diet of insects has sometimes been inferred through this tool. It is not clear whether the intensity of isotopic fractionation due to starvation could change as a result of the difference between C4 or C3-based diets, the present case being an example of an artificial diet containing both. Still, starvation is likely to lead to overestimates of the C4 fraction, although not by much (around 10% based on fig. 3 in Fry, Joern, and Parker, 1978).

The mass budget of heavy and light isotopes revealed that  $^{12}\text{C}$  was more easily absorbed than  $^{13}\text{C}$ , which is consistent with the observation of a negative  $\Delta^{13}\text{C}$ . But as the intake rate decreases,  $^{13}\text{C}$  is better absorbed compared to well-fed animals. This indicates that the biochemical environment of the gut varies with intake level, with effects on the processes of digestion and absorption. Moreover, we can also conclude that the respiration fractionation either is negligible compared to the one associated with absorption or that it further decreases the amount of  $^{13}\text{C}$  in the organism. But the biochemical origin of this modulation of  $^{13}\text{C}$  absorption is unclear. It could be due to longer gut passage time, or to increased food enzymatic availability at low gut filling levels. Our results reveal that the within-trophic level differences in trophic fractionation imputable to nutritional status (1-1.5 ‰) are substantial compared to differences typically associated with trophic level changes (3-4 ‰). Hence assessing trophic levels *in natura* using isotopic analysis requires caution, especially if the community is perturbed and might be subject to nutritional stress. With the changes in frequency and intensity of drought episodes, one should be cautious to these potential biases in isotopic trophic ecology.

### Acknowledgements

The authors wish to thank Anabelle Fuentes and Philippe Couzi for their contribution to rearing and Magloire Mandeng-Yogo for his support to chemical analysis. Preprint version 3 of this article has been peer-reviewed and recommended by Peer Community In Ecology (Kalinkat, 2023, available at: <https://doi.org/10.24072/pci.ecology.100515>).

### Fundings

This work was supported by the French National program EC2CO (Ecosphère Continentale et Côtière).

### Conflict of interest disclosure

The authors declare they have no conflict of interest relating to the content of this article. I. Gounand and J. Mathieu are identified as potential recommenders for PCI Ecology.

## Data, script, code, and supplementary information availability

Data, code and supporting information are available at: <https://doi.org/10.5281/zenodo.7824974> (Charberet, 2023).

## References

- Adams TS, Sterner RW (2000). *The effect of dietary nitrogen content on trophic level 15N enrichment*. *Limnology and Oceanography* **45**, 601–607. <https://doi.org/10.4319/lo.2000.45.3.0601>.
- Boag B, Neilson R, Scrimgeour CM (2006). *The effect of starvation on the planarian *Arthurdendyus triangulatus* (Tricladida: Terricola) as measured by stable isotopes*. *Biology and fertility of soils* **43**, 267–270. <https://doi.org/10.1007/s00374-006-0108-3>.
- Castanet J (1994). *Age estimation and longevity in reptiles*. *Gerontology* **40**, 174–192. <https://doi.org/10.1159/000213586>.
- Charberet S (2023). *Data and code for Feeding and growth variations affect 13C and 15N budgets during ontogeny in a lepidopteran larva (Version v3)*. Zenodo. <https://doi.org/10.5281/zenodo.7824974>.
- Chowdhury GM, Jiang L, Rothman DL, Behar KL (2014). *The contribution of ketone bodies to basal and activity-dependent neuronal oxidation in vivo*. *Journal of Cerebral Blood Flow & Metabolism* **34**, 1233–1242. <https://doi.org/10.1038/jcbfm.2014.77>.
- DeNiro MJ, Epstein S (1977). *Mechanism of carbon isotope fractionation associated with lipid synthesis*. *Science* **197**, 261–263. <https://doi.org/10.1126/science.327543>.
- Doi H, Akamatsu F, González AL (2017). *Starvation effects on nitrogen and carbon stable isotopes of animals: an insight from meta-analysis of fasting experiments*. *Royal Society Open Science* **4**, 170633. <https://doi.org/10.1098/rsos.170633>.
- Focken U (2001). *Stable isotopes in animal ecology: the effect of ration size on the trophic shift of C and N isotopes between feed and carcass*. *Isotopes in environmental and health studies* **37**, 199–211. <https://doi.org/10.1080/10256010108033296>.
- Fry B (2006). *Stable isotope ecology*. Vol. 521. Springer. <https://doi.org/10.1007/0-387-33745-8>.
- Fry B, Joern A, Parker P (1978). *Grasshopper food web analysis: use of carbon isotope ratios to examine feeding relationships among terrestrial herbivores*. *Ecology* **59**, 498–506. <https://doi.org/10.2307/1936580>.
- Gaye-Siessegger J, Focken U, Abel H, Becker K (2007). *Starvation and low feeding levels result in an enrichment of 13C in lipids and 15N in protein of Nile tilapia *Oreochromis niloticus* L*. *Journal of Fish Biology* **71**, 90–100. <https://doi.org/10.1111/j.1095-8649.2007.01469.x>.
- Gaye-Siessegger J, Focken U, Muetzel S, Abel H, Becker K (2004). *Feeding level and individual metabolic rate affect  $\delta^{13}\text{C}$  and  $\delta^{15}\text{N}$  values in carp: implications for food web studies*. *Oecologia* **138**, 175–183. <https://doi.org/10.1007/s00442-003-1429-7>.
- Gorokhova E, Hansson S (1999). *An experimental study on variations in stable carbon and nitrogen isotope fractionation during growth of *Mysis mixta* and *Neomysis integer**. *Canadian Journal of Fisheries and Aquatic Sciences* **56**, 2203–2210. <https://doi.org/10.1139/f99-149>.
- Harrison JF (1995). *Nitrogen metabolism and excretion in locusts*. In: *Nitrogen metabolism and excretion*. Ed. by Patrick J. Walsh and Patricia A. Wright. CRC Press, pp. 119–131.
- Hatch KA (2012). *The use and application of stable isotope analysis to the study of starvation, fasting, and nutritional stress in animals*. *Comparative physiology of fasting, starvation, and food limitation*, 337–364. [https://doi.org/10.1007/978-3-642-29056-5\\_20](https://doi.org/10.1007/978-3-642-29056-5_20).
- Haubert D, Langel R, Scheu S, Ruess L (2005). *Effects of food quality, starvation and life stage on stable isotope fractionation in *Collembola**. *Pedobiologia* **49**, 229–237. <https://doi.org/10.1016/j.pedobi.2004.11.001>.
- Hertz E, Trudel M, Cox MK, Mazumder A (2015). *Effects of fasting and nutritional restriction on the isotopic ratios of nitrogen and carbon: a meta-analysis*. *Ecology and evolution* **5**, 4829–4839. <https://doi.org/10.1002/ece3.1738>.

- Hinks C, Byers J (1976). *Biosystematics of the genus Euxoa (Lepidoptera: Noctuidae): V. Rearing procedures, and life cycles of 36 species*. *The Canadian Entomologist* **108**, 1345–1357. <https://doi.org/10.4039/Ent1081345-12>.
- Kalinkat G (2023). *Refining our understanding how nutritional conditions affect 13C and 15N isotopic fractionation during ontogeny in a herbivorous insect*. *Peer Community in Ecology*. <https://doi.org/10.24072/pci.ecology.100515>.
- Martinez del Rio C, Wolf BO (2005). *Mass-balance models for animal isotopic ecology*. In: *Physiological and ecological adaptations to feeding in vertebrates*. Ed. by J. Matthias Starck and Tobias Wang. Science Publishers, pp. 141–174.
- Martinez del Rio C, Wolf N, Carleton SA, Gannes LZ (2009). *Isotopic ecology ten years after a call for more laboratory experiments*. *Biological Reviews* **84**, 91–111. <https://doi.org/10.1111/j.1469-185X.2008.00064.x>.
- McConnaughey T, McRoy C (1979). *Food-web structure and the fractionation of carbon isotopes in the Bering Sea*. *Marine biology* **53**, 257–262. <https://doi.org/10.1007/BF00952434>.
- McCue MD (2008). *Endogenous and environmental factors influence the dietary fractionation of 13C and 15N in hissing cockroaches Gromphadorhina portentosa*. *Physiological and Biochemical Zoology* **81**, 14–24. <https://doi.org/10.1086/522901>.
- Melzer E, Schmidt H (1987). *Carbon isotope effects on the pyruvate dehydrogenase reaction and their importance for relative carbon-13 depletion in lipids*. *Journal of Biological Chemistry* **262**, 8159–8164. [https://doi.org/10.1016/S0021-9258\(18\)47543-6](https://doi.org/10.1016/S0021-9258(18)47543-6).
- O'Leary MH (1981). *Carbon isotope fractionation in plants*. *Phytochemistry* **20**, 553–567. [https://doi.org/10.1016/0031-9422\(81\)85134-5](https://doi.org/10.1016/0031-9422(81)85134-5).
- Oelbermann K, Scheu S (2002). *Stable isotope enrichment ( $\delta^{15}\text{N}$  and  $\delta^{13}\text{C}$ ) in a generalist predator (*Pardosa lugubris*, Araneae: Lycosidae): effects of prey quality*. *Oecologia*, 337–344. <https://doi.org/10.1007/s004420100813>.
- Olive PJ, Pinnegar JK, Polunin NV, Richards G, Welch R (2003). *Isotope trophic-step fractionation: a dynamic equilibrium model*. *Journal of Animal Ecology* **72**, 608–617. <https://doi.org/10.1046/j.1365-2656.2003.00730.x>.
- Post DM (2002). *Using stable isotopes to estimate trophic position: models, methods, and assumptions*. *Ecology* **83**, 703–718. <https://doi.org/10.2307/3071875>.
- Schmidt HL, Robins RJ, Werner RA (2015). *Multi-factorial in vivo stable isotope fractionation: causes, correlations, consequences and applications*. *Isotopes in Environmental and Health Studies* **51**, 155–199. <https://doi.org/10.1080/10256016.2015.1014355>.
- Schmidt O, Scrimgeour CM, Curry JP (1999). *Carbon and nitrogen stable isotope ratios in body tissue and mucus of feeding and fasting earthworms (*Lumbricus festivus*)*. *Oecologia*, 9–15. <https://doi.org/10.1007/s004420050697>.
- Sears J, Hatch SA, O'Brien DM (2009). *Disentangling effects of growth and nutritional status on seabird stable isotope ratios*. *Oecologia* **159**, 41–48. <https://doi.org/10.1007/s00442-008-1199-3>.
- Shah J, Bailey E (1976). *Enzymes of ketogenesis in the fat body and the thoracic muscle of the adult cockroach*. *Insect Biochemistry* **6**, 251–254. [https://doi.org/10.1016/0020-1790\(76\)90091-3](https://doi.org/10.1016/0020-1790(76)90091-3).
- Sick H, Roos N, Saggau E, Haas K, Meyn V, Walch B, Trugo N (1997). *Amino acid utilization and isotope discrimination of amino nitrogen in nitrogen metabolism of rat liver in vivo*. *Zeitschrift für Ernährungswissenschaft* **36**, 340–346. <https://doi.org/10.1007/bf01617819>.
- Starck J Matthias and Tobias Wang, eds. (2005). *Physiological and ecological adaptations to feeding in vertebrates*. Science Publishers, p. 425.
- Trochine C, Diaz Villanueva V, Balseiro E, Modenutti B (2019). *Nutritional stress by means of high C: N ratios in the diet and starvation affects nitrogen isotope ratios and trophic fractionation of omnivorous copepods*. *Oecologia* **190**, 547–557. <https://doi.org/10.1007/s00442-019-04438-5>.
- Williams CT, Buck CL, Sears J, Kitaysky AS (2007). *Effects of nutritional restriction on nitrogen and carbon stable isotopes in growing seabirds*. *Oecologia* **153**, 11–18. <https://doi.org/10.1007/s00442-007-0717-z>.