



HAL
open science

Early activation and recruitment of invariant natural killer T cells during liver ischemia-reperfusion: the major role of the alarmin interleukin-33

Aurélie Robin, Claire Mackowiak, Romain Bost, Fanny Dujardin, Alice Barbarin, Antoine Thierry, Thierry Hauet, Luc Pellerin, Jean-Marc Gombert, Ephrem Salamé, et al.

► To cite this version:

Aurélie Robin, Claire Mackowiak, Romain Bost, Fanny Dujardin, Alice Barbarin, et al.. Early activation and recruitment of invariant natural killer T cells during liver ischemia-reperfusion: the major role of the alarmin interleukin-33. *Frontiers in Immunology*, 2023, 14, 10.3389/fimmu.2023.1099529 . hal-04249259

HAL Id: hal-04249259

<https://hal.science/hal-04249259>

Submitted on 20 Nov 2023

HAL is a multi-disciplinary open access archive for the deposit and dissemination of scientific research documents, whether they are published or not. The documents may come from teaching and research institutions in France or abroad, or from public or private research centers.

L'archive ouverte pluridisciplinaire **HAL**, est destinée au dépôt et à la diffusion de documents scientifiques de niveau recherche, publiés ou non, émanant des établissements d'enseignement et de recherche français ou étrangers, des laboratoires publics ou privés.



Distributed under a Creative Commons Attribution 4.0 International License



OPEN ACCESS

EDITED BY

Liyen Loh,
University of Colorado, United States

REVIEWED BY

Dominic Paquin Proulx,
United States Military HIV Research
Program, United States
Kazuya Iwabuchi,
Kitasato University School of Medicine,
Japan
Karina Inacio Carvalho,
Case Western Reserve University,
United States

*CORRESPONDENCE

André Herbelin

✉ andre.herbelin@inserm.fr

Louise Barbier

✉ louisebarbier@hotmail.fr

†PRESENT ADDRESS

Louise Barbier,
New Zealand Liver Transplant unit,
Auckland City Hospital, Auckland,
New Zealand

†These authors have contributed
equally to this work and share
first authorship

‡These authors have contributed
equally to this work and share
last authorship

RECEIVED 15 November 2022

ACCEPTED 12 April 2023

PUBLISHED 09 May 2023

CITATION

Robin A, Mackowiak C, Bost R, Dujardin F,
Barbarin A, Thierry A, Hauet T, Pellerin L,
Gombert J-M, Salamé E, Herbelin A and
Barbier L (2023) Early activation and
recruitment of invariant natural killer T cells
during liver ischemia-reperfusion: the
major role of the alarmin interleukin-33.
Front. Immunol. 14:1099529.
doi: 10.3389/fimmu.2023.1099529

Early activation and recruitment of invariant natural killer T cells during liver ischemia-reperfusion: the major role of the alarmin interleukin-33

Aurélie Robin^{1‡}, Claire Mackowiak^{2‡}, Romain Bost²,
Fanny Dujardin³, Alice Barbarin¹, Antoine Thierry⁴,
Thierry Hauet⁵, Luc Pellerin⁵, Jean-Marc Gombert⁶,
Ephrem Salamé^{7‡}, André Herbelin^{2*‡} and Louise Barbier^{7*†‡}

¹Centre Hospitalier Universitaire de Poitiers, Institut National de la Santé Et de la Recherche Médicale, Ischemie Reperfusion Métabolisme et Inflammation Stérile en Transplantation, Université de Poitiers, Poitiers, France, ²Institut National de la Santé Et de la Recherche Médicale (INSERM), Ischemie Reperfusion Métabolisme et Inflammation Stérile en Transplantation (IRMETIST), Université de Poitiers, Poitiers, France, ³Centre Hospitalier Universitaire (CHU) Trousseau, Pathology, Tours, France, ⁴Université de Poitiers, Institut National de la Santé Et de la Recherche Médicale (INSERM), Ischemie Reperfusion Métabolisme et Inflammation Stérile en Transplantation (IRMETIST), Centre Hospitalier Universitaire (CHU) de Poitiers, Nephrology, Poitiers, France, ⁵Université de Poitiers, Institut National de la Santé Et de la Recherche Médicale (INSERM), Ischemie Reperfusion Métabolisme et Inflammation Stérile en Transplantation (IRMETIST), Centre Hospitalier Universitaire (CHU) de Poitiers, Biochemistry, Poitiers, France, ⁶Université de Poitiers, Institut National de la Santé Et de la Recherche Médicale (INSERM), Ischemie Reperfusion Métabolisme et Inflammation Stérile en Transplantation (IRMETIST), Centre Hospitalier Universitaire (CHU) de Poitiers, Immunology, Poitiers, France, ⁷Université de Tours, Centre Hospitalier Universitaire (CHU) Trousseau, Digestive Surgery and Liver Transplantation, Institut National de la Santé Et de la Recherche Médicale (INSERM), Ischemie Reperfusion Métabolisme et Inflammation Stérile en Transplantation (IRMETIST), Tours, France

Over the past thirty years, the complexity of the $\alpha\beta$ -T cell compartment has been enriched by the identification of innate-like T cells (ITCs), which are composed mainly of invariant natural killer T (iNKT) cells and mucosal-associated invariant T (MAIT) cells. Based on animal studies using ischemia-reperfusion (IR) models, a key role has been attributed to iNKT cells in close connection with the alarmin/cytokine interleukin (IL)-33, as early sensors of cell-stress in the initiation of acute sterile inflammation. Here we have investigated whether the new concept of a biological axis of circulating iNKT cells and IL-33 applies to humans, and may be extended to other ITC subsets, namely MAIT and $\gamma\delta$ -T cells, in the acute sterile inflammation sequence occurring during liver transplant (LT). From a prospective biological collection of recipients, we reported that LT was accompanied by an early and preferential activation of iNKT cells, as attested by almost 40% of cells having acquired the expression of CD69 at the end of LT (i.e. 1-3 hours after portal reperfusion), as opposed to only 3-4% of conventional T cells. Early activation of iNKT cells was positively correlated with the systemic release of the alarmin IL-33 at graft reperfusion. Moreover, in a mouse model of hepatic IR, iNKT cells were activated in the periphery (spleen), and recruited in the liver in WT mice, as early as the first hour after reperfusion, whereas this phenomenon was virtually missing in IL-33-deficient mice. Although to a lesser degree than iNKT cells, MAIT and $\gamma\delta$ -T cells also seemed targeted during LT, as attested by 30% and

10% of them acquiring CD69 expression, respectively. Like iNKT cells, and in clear contrast to $\gamma\delta$ -T cells, activation of MAIT cells during LT was closely associated with both release of IL-33 immediately after graft reperfusion and severity of liver dysfunction occurring during the first three post-operative days. All in all, this study identifies iNKT and MAIT cells in connection with IL-33 as new key cellular factors and mechanisms of acute sterile inflammation in humans. Further investigations are required to confirm the implication of MAIT and iNKT cell subsets, and to precisely assess their functions, in the clinical course of sterile inflammation accompanying LT.

KEYWORDS

innate like T cell, iNKT cell, interleukin-33, sterile Inflammation, alarmin, liver transplantation, ischemia - reperfusion

Introduction

Besides classic adaptive CD4+ and CD8+ T cells, the T cell compartment comprises several lineages of cells endowed with both innate and adaptive properties that are referred to as unconventional or innate-like invariant T cells (ITCs) (for reviews (1–3)). This class of T cells includes three main lineages, i.e., invariant natural killer T (iNKT) cells, mucosa-associated invariant T (MAIT) cells, and $\gamma\delta$ -T cells. These cells recognize non-peptide antigens, are not restricted to classical major histocompatibility complex (MHC) and have emerged as key players in tissue homeostasis and protection from infection. As immune system components, ITCs are also expected to rapidly and efficiently respond to cell-stress and represent obvious candidates to participate in endogenous pathways of inflammation. For instance, non-classical MHC cluster differentiation (CD)1d-restricted presentation of self-antigens to iNKT cells is induced by endogenous stress and may be activated by proinflammatory cytokines (4, 5). Given their versatile functions, in addition to contributing to tissue inflammation and damage, ITCs can participate in the process of the resolution of inflammation, including tissue repair and regeneration (6, 7).

Based on numerous mouse models, iNKT cells are recognized as the archetypal ITCs, which are capable of being early sensors and managers in the development and resolution of acute sterile inflammation (for review: (8)), a condition that occurs in the absence of infection and underlies medical afflictions such as mechanical trauma, chemical and environmental insults, and

organ ischemia-reperfusion (IR) injury (IRI) (for reviews: (9–11)). Indeed, activation of iNKT cells has been documented as a general mechanism for the initiation of IRI in solid organs (kidney, liver, lung, brain and heart) (12–18); for review: (8)). Moreover, exploration of the modes of activation and recruitment of iNKT cells in sterile inflammation induced by IRI in mice suggests the involvement of T cell receptor (TCR)/non-classical MHC CD1d molecule interactions in iNKT cell activation, even though further investigations are needed to characterize the effective endogenous lipids presented by CD1d (13, 15, 17, 19–21). Another specific feature of ITCs is their ability to be activated by cytokine-driven signals independently of TCR-engagement and CD1d molecule recognition. In particular, the pro-inflammatory cytokines interleukin (IL)-12 and IL-18 can activate iNKT cells to produce IFN- γ , a response that is amplified upon TCR-engagement (22). Accordingly, in a model of sterile liver injury, the authors documented a biphasic mechanism of iNKT cell activation through self-antigen presentation and IL-12/IL-18-driven signals (7).

More recently, the alarmin/cytokine IL-33 has emerged as a new general mechanism driving activation and recruitment of iNKT cells in the early phase of sterile inflammation (for review:(8)). IL-33 belongs to the IL-1 superfamily ((23); for review: (24)), is constitutively expressed in the nucleus of endothelial cells and epithelial cells and is immediately released after tissue damage (12, 25–31); for reviews: (32, 33)). IL-33 has aroused interest due to its singular action as an alarmin during infectious, allergic responses and acute tissue injury (8, 24, 29, 34, 35), and as a cytokine, contributing to the resolutive/repair phase of sterile inflammation (30, 31, 36, 37). We recently provided evidence that IL-33 and iNKT cells interact directly to promote kidney inflammation in an experimental model of renal IRI (12). Indeed, iNKT cells, like innate cells (natural killer cells, neutrophils), constitutively express the IL-33 receptor-specific ST2 chain (38, 39). As a result, recruitment of iNKT cells is rapidly driven by endogenous released IL-33, which induces their IFN- γ /IL-17A production in response to IR (12).

Even though the contribution of iNKT cells to induction of sterile inflammation in experimental models is well-established, the

Abbreviations: ALT, alanine amino transferase; CD, cluster differentiation; D0, before transplantation; EoT, end of transplantation; FCM, flow cytometry; HS, healthy subjects; IFN, interferon; IL, interleukin; iNKT, invariant natural killer T; IR, ischemia reperfusion; IRI, ischemia-reperfusion injury; ITCs, innate-like T cells; LT, liver transplant or liver transplantation; MAIT, mucosa-associated invariant T; MEAF, model for early allograft function; MFI, median fluorescence intensity; MHC, major histocompatibility complex; PBMC, peripheral blood mononuclear cells; SEM, standard error of the mean; TCR, T cell receptor; WT, wild-type.

place of this ITC subset in acute conditions resulting from sterile inflammation in humans remains poorly documented. Considering our recent demonstration that endogenous IL-33 acts as an alarmin in liver IR and is associated with injury after human liver transplantation (LT) (40), we decided to investigate whether the new concept of a biological axis of iNKT cells and IL-33, involved in alerting the immune cells during sterile inflammation, applies to human LT.

To this end, we analyzed the influence of the LT on the activation status of blood iNKT cells and its possible association with early IL-33 release. To conclusively demonstrate that IL-33 is the causal effect, we compared iNKT cell activation in wild-type (WT) and IL-33-deficient mice in a model of hepatic IRI. We extended our analysis in LT patients to the other main ITC compartments, namely MAIT and $\gamma\delta$ -T cells, relative to the adaptive conventional T cell compartments.

Material and methods

LT patients and healthy subjects

Twenty-one patients from a prospective biological collection of adult LT recipients from the Transplant Unit of the University Hospital of Tours between July 1, 2017, and June 2, 2019, were included. These patients represent a sub-group of patients described in a previous report (40) where intra-operative and post-operative management was described. Recipients, donor characteristics, and outcomes of LT are detailed in [Supplementary Table 1](#).

Early allograft dysfunction was assessed by the model of early allograft function (MEAF) score defined by Pareja et al. in 2015 (41) (mathematical model based on bilirubinemia levels, International Normalized Ratio and ALT during the first three post-operative days, giving a continuous score ranging from 0 to 10).

Peripheral blood mononuclear cells (PBMC) from eleven healthy subjects (HS) (mean age 47 ± 15 years) without liver disease obtained from the French Blood Institute (Etablissement Français du Sang, Lyon, France) were used as controls. This study was approved by a regional ethics committee (comité consultatif de protection des personnes dans la recherche biomédicale Tours-Région Centre-Ouest 1 under registration number DC-2016-2651) and by the French regulatory agency (Agence de la Biomédecine, the national authority for organ procurement and transplantation in France, under registration number PFS16-005). Written informed consents were obtained for each patient and healthy donor according to the Declaration of Helsinki. All data were collected anonymously in a prospectively maintained database declared to the French Data Protection Authority. No potentially identifiable human images or data are presented in this study.

PBMC and serum collections from LT patients

PBMC were isolated by Ficoll density gradient from peripheral blood of HS (n=11) and patients prior to LT (D0: usually 2-6 hours

prior to transplantation; n=17), and at the end of the procedure during skin closure (EoT; n=16).

Serum was isolated from peripheral blood of healthy subjects (n=11) and LT patients at D0 (n=21), at graft reperfusion (GR: just after unclamping of the caval and portal anastomoses, usually around 3-4 hours after the beginning of the procedure; n=21), and at EoT (n=21). PBMC and serum were stored frozen in liquid nitrogen and at -80°C , respectively, at the Centre de Ressources Biologiques Santé of Tours (BB-0033-00013).

Enzyme-linked immunosorbent assay

Serum IL-33, IL-12 and IL-18 (R&D systems) were determined using ELISA kits according to the manufacturer's instructions.

Mice

WT C57BL/6 mice were purchased from Janvier Labs (Le Genest-Saint-Isle, France). $J\alpha 18\text{KO}$ C57BL/6 mice (lacking iNKT cells), hereafter referred to as iNKT cell-deficient mice, were provided by Taniguchi and colleagues (42). Mice with a Lac-z gene-trap (Gt) reporter (IL-33^{Gt/Gt}) onto a C57BL/6 background, hereafter referred to as IL-33-deficient mice, were generated as described by Pichery et al. (43). Ten-to-twelve-week-old male mice weighing between 22 and 30 g were used in all experiments.

Experimental model of warm IRI

All animal experimental procedures and housing were carried out in accordance with the European Communities Council Directive (2010/63/EU) and complied with the three Rs principle (Replace, Reduce, Refine). The animal study was reviewed and approved by a regional Ethics Committee (COMETHEA Poitou-Charentes, authorization n°2016110211568800).

The entire procedure of warm IR was adapted from the technique described by Abe et al. (44). Briefly, thirty minutes before general anesthesia, mice received analgesia with subcutaneous injection of buprenorphine (0.05 mg/kg). Mice were then anaesthetized with intraperitoneal injection of ketamine (80 mg/kg) and xylazine (10 mg/kg). Mice then received continuous anesthesia with gaseous administration of isoflurane (2% then 1.5% for maintenance). After disinfection of the abdomen, laparotomy with right subcostal and upper midline incision was performed. Median and left lateral lobes were lift up to expose their hepatic pedicle just above the branching to the right lateral lobe and an atraumatic clamp was placed. This technique allows partial ischemia of 70% of the liver (median and left lateral lobes), while right lateral and caudate, quadrate lobes are still perfused. Saline serum was carefully added to the abdominal cavity for hydration. Clamp was applied for 70 minutes under gaseous isoflurane anesthesia. The clamp was then removed, and the abdominal wall and skin were totally closed before isoflurane cessation. Animals were culled at various time points after reperfusion by cervical dislocation.

In sham-operated animals, the surgical procedure was identical, but without clamping of the hepatic pedicle.

Mouse plasma collection for ALT activity assay

Blood samples were obtained by retro-orbital bleed under gaseous isoflurane (5%) and collected in tubes containing heparin. After centrifugation (10 minutes, 2000g), plasma samples were stored at -20°C prior to ALT measurement with a Cobas C701 automatic analyzer (Roche Diagnostic).

Histology of mouse livers

The portal vein was cut immediately after euthanasia and the inferior vena cava was injected with phosphate-buffered saline to perfuse the liver. Liver samples were preserved in formalin before paraffin embedding. Samples were cut at 3.5µm and subjected to hematoxylin phloxine saffron staining. To quantify tissue lesions of IRI, we used a reading grid from the literature that we adapted, as previously detailed (43). The total number of points was referred to as the liver injury score.

Mouse cell isolation

Dissociation of liver and spleen was carried out at 37°C during 30 minutes and at room temperature during 56 seconds, respectively, using a gentleMACS™ dissociator (Miltenyi Biotec), according to the manufacturer's instructions. Note that dissociation of liver was performed with the Liver Dissociation kit (Miltenyi Biotec) in gentleMACS™ C tubes (Miltenyi Biotec). Spleen and liver samples were then homogenized through a 70-µm cell-strainer and washed. Parenchymal cells were removed by centrifugation and red blood cells were lysed in ammonium chloride buffer before resuspension in DMEM cell culture media and RPMI 1640 for liver and spleen samples, respectively. Cell counting was performed in trypan blue. Cell numbers were determined with a hemacytometer, re-suspended at 1.10^6 /mL in phosphate-buffered saline, and expressed per mg tissue.

Flow cytometry analysis

Briefly, cells were stained by viability dye, and then incubated with the appropriate antibody/reagent mix prior to fixation, as previously reported (12, 45). A detailed list of antibodies and reagents used for staining is provided in [Supplementary Table 2](#). Fluorescence minus one control or unstained cells served as negative staining control samples. Samples were acquired on a spectral cytometer AURORA using SpectroFlo® software for unmixing (Cytex) and on a BD FACS Verse™ cytometer using the BD FACSuite software (BD Biosciences) for human and mouse samples, respectively. Data were analyzed using FlowJo v10 (BD Biosciences). Because of the very low relative proportion of iNKT

cells among human PBMC (that can be less than 0.01% of total CD3(+) cells), a minimum of 50,000 CD3(+) cells were analyzed for all human samples. For qualitative evaluation (CD69 and CD4 expression), iNKT cells could be counted (mean ± SEM and range/sample) in all HS (387 ± 148 [30-4221]), and in 8 (out of 17) (127 ± 51 [13-399]) and 9 (out of 16) (40 ± 17 [10-2982]) patients before and at the end of LT, respectively.

Gating strategies are detailed in [Supplementary Figure 1](#) and [Supplementary Figure 11](#) for human and mouse samples, respectively. Heatmap analysis presented in [Supplementary Figure 4](#) was performed by OMIQ® software.

Statistical analysis

Statistical analysis was performed using Excel® for Mac Os (Microsoft® Corporation) and Graph Pad Prism software v7 (GraphPad, La Jolla, Inc.). Quantitative data are presented as percentages and absolute numbers. Qualitative data are presented as mean (± standard error of the mean (SEM)). Non-parametric tests were used because of the small number of samples per group. Experimental and control groups were compared with the unpaired (independent) two-tailed Mann-Whitney U test. Spearman tests were performed for correlation analysis. Results were considered to be statistically significant when $p < 0.05$.

Results

Overall decrease in the relative proportion of circulating ITC subsets in patients awaiting LT

First, we analyzed the relative proportion of conventional lymphocytes and ITCs (for gating strategy, see [Supplementary Figure 1](#)) in patients awaiting LT (D0) and in healthy subjects (HS) (for representative plots, see [Figure 1A](#)). The frequency of total T lymphocytes (defined as CD3(+) cells) among PBMC did not differ between LT patients and HS ([Figure 1B](#), left panel). In LT patients, we observed decreased frequency of the conventional CD8 T cell subset, as compared to HS ([Figure 1B](#), right panel), which was accompanied by an increase of its CD4 counterpart ([Figure 1B](#), middle panel). All in all, a dramatic decrease in frequency of all ITC components was evidenced among total T lymphocytes in LT patients as compared to HS ([Figures 1C-E](#)). Indeed, substantially lower frequency (mean ± SEM) of iNKT cells (0.02 ± 0.006 vs. $0.17 \pm 0.02\%$ in HS; $p < 0.01$) ([Figure 1C](#)), MAIT cells (0.51 ± 0.11 vs. $2.89 \pm 0.49\%$ in HS; $p < 0.0001$) ([Figure 1D](#)), and $\gamma\delta$ -T cells (2.70 ± 0.61 vs. $4.47 \pm 0.82\%$ in HS; $p < 0.05$) ([Figure 1E](#)) was observed.

LT did not affect the relative proportion of ITC subsets, except for MAIT cells

Next, we investigated the impact of LT on frequencies of circulating conventional T lymphocytes and ITCs ([Figure 1](#), for

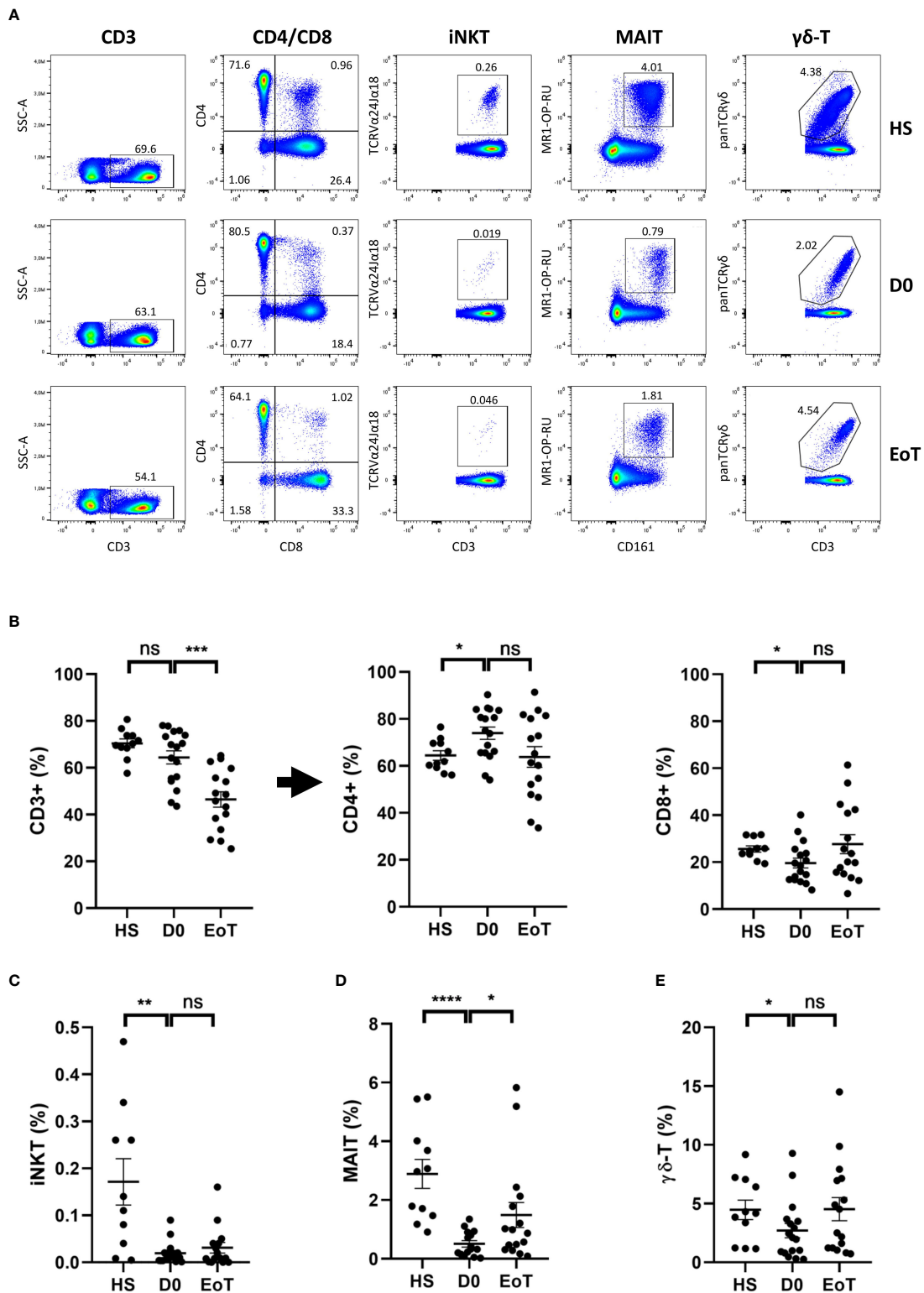


FIGURE 1

Effect of LT on relative proportion of blood conventional and ITC subsets. Flow cytometry analysis (representative plots are depicted in (A)) showing frequencies of total CD3(+) cells (among total mononuclear live cells), conventional CD4 T cells, referred as CD4+ cells, and conventional CD8 T cells, referred as CD8+ cells (among total CD3(+) cells) (B), iNKT cells (C), MAIT cells (D) and γδ-T cells (E) (among total CD3(+) cells) in peripheral blood of healthy subjects (HS; n=11), patients awaiting LT (D0; n=17) and after LT (EoT; n=16). Of note the decrease frequency of total T lymphocytes (CD3(+)) among PBMC between the beginning and the end of LT (64.4 ± 1.9% (n=17) vs. 46.4 ± 3.3% (n=16), respectively) is fully explained by an increase of its CD3(-) counterpart (53.6 ± 3.3% (n=16) at EoT vs. 35.6 ± 2.8% (n=17) at D0). For detailed gating strategy, see [Supplementary Figure 1](#). Data are expressed as means ± SEM. Unpaired (independent) two-tailed Mann-Whitney U test. *p<0.05, **p<0.01, ***p<0.001, ****p<0.0001, ns, not significant. Each symbol represents one HS or a LT patient.

representative plots, see [Figure 1A](#)). As shown in [Figure 1B](#), frequency of total T lymphocytes (CD3(+)) significantly decreased between the beginning (D0) and the end (EoT) of LT, a phenomenon explained by an increase of non-T lymphocytes (CD3(-)) among PBMC (for details, see the legend of [Figure 1](#)). Apart from CD4 T cells, for which a decreasing trend was observed, all T cell subsets showed an increased trend in terms of rate frequency, ranging from 1.4-fold-increase for conventional CD8 T-cells ([Figure 1B](#)), 1.6-fold-increase for iNKT cells ([Figure 1C](#)), 1.6-fold-increase for $\gamma\delta$ -T cells ([Figure 1E](#)) to a significant 2.9-fold-increase ($p < 0.05$) for MAIT cells ([Figure 1D](#)).

LT was associated with early and preferential activation of ITC subsets, especially iNKT cells

LT was accompanied by cell activation of all T cell subsets ([Figure 2](#); for representative histograms and plots, see [Figure 2A](#) and [Supplementary Figure 2](#), respectively), as attested by the rate of increase in cells expressing the early activation marker CD69, which ranged from a 2.9-fold-increase for iNKT cells ([Figure 2C](#)), a 2.3-fold-increase for MAIT cells ([Figure 2D](#)) and conventional T cells ([Figure 2B](#)) to a 2.0-fold-increase for $\gamma\delta$ -T cells ([Figure 2E](#)). Moreover, by comparing the percentage of cells expressing CD69 between the end and the beginning of LT, we deduced that almost 40% of iNKT cells had become activated ($57.3 \pm 9.2\%$ at EoT vs. $19.7 \pm 3.2\%$ at D0), instead of only 3-4% of conventional T cells (CD3 T cells: $6.2 \pm 1.4\%$ at EoT vs. $2.3 \pm 0.5\%$ at D0; CD4 T cells: $4.2 \pm 1.2\%$ at EoT vs. $1.6 \pm 3.6\%$ at D0; CD8 T cells: $6.7 \pm 1.4\%$ at EoT vs. $2.9 \pm 0.6\%$ at D0). To an intermediate place, 30% of MAIT cells ($52.3 \pm 7.0\%$ at EoT vs. $22.5 \pm 3.6\%$ at D0) and 10% of $\gamma\delta$ -T cells ($21.0 \pm 2.6\%$ at EoT vs. $10.3 \pm 1.95\%$ at D0) had also become activated during LT. Of note, iNKT cell activation during LT involved both CD4(+) ($37.3 \pm 11.3\%$ at EoT vs. $9.55 \pm 3.9\%$ at D0) and CD4(-) ($78.6 \pm 8.6\%$ at EoT vs. $37.0 \pm 9.9\%$ at D0) contingents ([Supplementary Figure 3A](#)). The same conclusion was reached when comparing the CD8(+) ($55.4 \pm 7.0\%$ at EoT vs. $23.5 \pm 3.8\%$ at D0) and CD8(-) ($47.4 \pm 4.8\%$ at EoT vs. $22.9 \pm 4.8\%$ at D0) contingents of the MAIT subset ([Supplementary Figure 3B](#)).

Activation of iNKT and MAIT cells at the end of LT was closely associated with release of the alarmin IL-33 immediately after graft reperfusion

At this stage, an important question was to identify the underlying mechanism involved in activation of ITC populations during LT. Although TCR-engagement could not be excluded, the fact that no modulation of the TCR signal transduction molecule CD3 expression level was found on iNKT, MAIT and $\gamma\delta$ -T cells between the beginning and the end of LT even when comparing CD69(+) to CD69(-) fractions for each of the three ITC populations studied, does not support the hypothesis of activation-induced TCR internalization ([Supplementary Figure 4](#); for representative plots, see [Supplementary Figure 5](#)).

Regarding innate activation by cytokines, as mentioned above, a major candidate is IL-33, which, on the one hand, targets innate components of the immune system, including ITCs such as iNKT cells ([38, 39](#)) and MAIT cells ([46](#)) and, on the other hand, has been documented to be released as an alarmin both in a mouse model of warm hepatic IRI and in the setting of human LT ([40](#)), a conclusion that we confirmed in the present study ([Figure 3A](#)).

Supporting the proposal that ITCs were activated early during LT in response to IL-33 release, we found a positive correlation between serum levels of IL-33 after graft reperfusion and expression of the early activation marker CD69 on blood iNKT cells ($r=0.74$; $p < 0.03$; $n=9$) and MAIT cells ($r=0.73$; $p < 0.002$; $n=16$) at the end of LT ([Figure 3B](#); left and middle panel, respectively). In clear contrast, during LT, serum levels of IL-12 and IL-18, also known to activate ITCs, were neither increased ([Supplementary Figure 6A](#)), nor correlated with CD69 expression on any of the three ITC populations studied ([Supplementary Figure 6B](#)).

Note that no correlation was found with IL-33 when considering CD69(+) $\gamma\delta$ -T cells ([Figure 3B](#); right panel) and CD69(+) conventional T cells ([Supplementary Figure 7](#)). Moreover, and compatible with the hypothesis that IL-33 would be a common underlying factor contributing to iNKT and MAIT cell activation, we observed a positive correlation between the relative proportions of CD69(+) iNKT and CD69(+) MAIT cells at the end of LT. In contrast, CD69(+) $\gamma\delta$ -T cells, which did not correlate with serum of IL-33, did not correlate with CD69(+) iNKT cells either ([Supplementary Figure 8](#)).

Activation of iNKT and MAIT cells at the end of LT correlated with early graft dysfunction

Finally, we interrogated whether activation of ITCs induced by LT could be predictive of the level of early graft dysfunction, measured by the MEAF score ([Figure 3C](#)). Although no correlation was found for $\gamma\delta$ -T cells ($r=0.35$; $p=0.18$; $n=16$), we observed that CD69 expression on MAIT cells ($r=0.55$; $p < 0.05$; $n=16$) was positively correlated with the MEAF score. For iNKT cells, a non-significant trend ($p=0.11$) for a positive correlation was evidenced ($r=0.57$).

The proof of concept of a deleterious IL-33/ITC axis applied to liver IR injury

In order to provide direct and definitive evidence of the causal link between IL-33 and activation of ITCs during liver IR, we decided to determine the impact of IL-33 on activation/recruitment of iNKT cells in a mouse model of warm hepatic ischemia. We chose to focus on iNKT cells, based on their presence in mouse at high frequencies both in periphery (spleen) and in liver ([47](#)), as well as their contribution to severity of liver IR, as attested by decreased ALT levels, and fewer neutrophil recruitment and histological lesions in iNKT cell-deficient ($\alpha 18\text{KO}$) mice, compared to WT mice ([Supplementary Figures 9, 10](#)).

To test the hypothesis of an IL-33/iNKT cell axis, we then evaluated IL-33-deficient (IL-33^{Gt/Gt}) mice ([43](#)) in our liver IR model. Number and activation level (mean fluorescence intensity

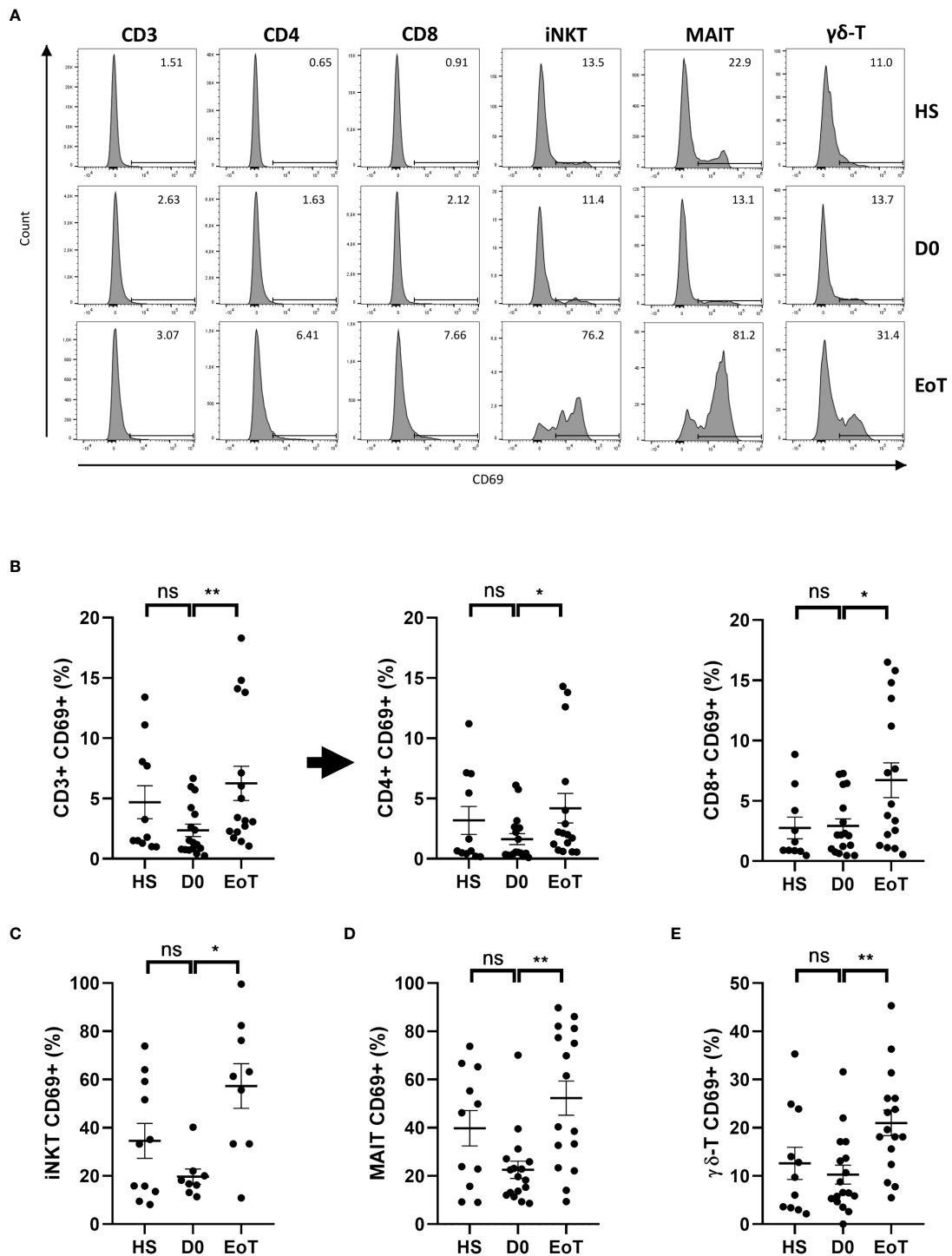


FIGURE 2

Effect of LT on relative proportion of blood CD69(+) cells among conventional and ITC subsets. Flow cytometry analysis (representative histograms are depicted in (A)) showing frequencies of CD69(+) cells among total CD3(+) cells, conventional CD4 T cells, referred as CD4+ cells, conventional CD8 T cells, referred as CD8+ cells (B), iNKT cells (C), MAIT cells (D), and γδ-T cells (E) in peripheral blood of healthy subjects (HS; n=11) patients before (D0; n=8-17) and at the end of LT (EoT; n=9-16). Of note, iNKT cells could not be detected in 9 (out of 17) and 7 (out of 16) patients before and at the end of LT, respectively. For detailed gating strategy, see [Supplementary Figure 1](#). Representative plots are shown in [Supplementary Figure 2](#). Data are expressed as means ± SEM. Unpaired (independent) two-tailed Mann-Whitney U test. *p<0.05, **p<0.01, ns, not significant. Each symbol represents one HS or LT patient.

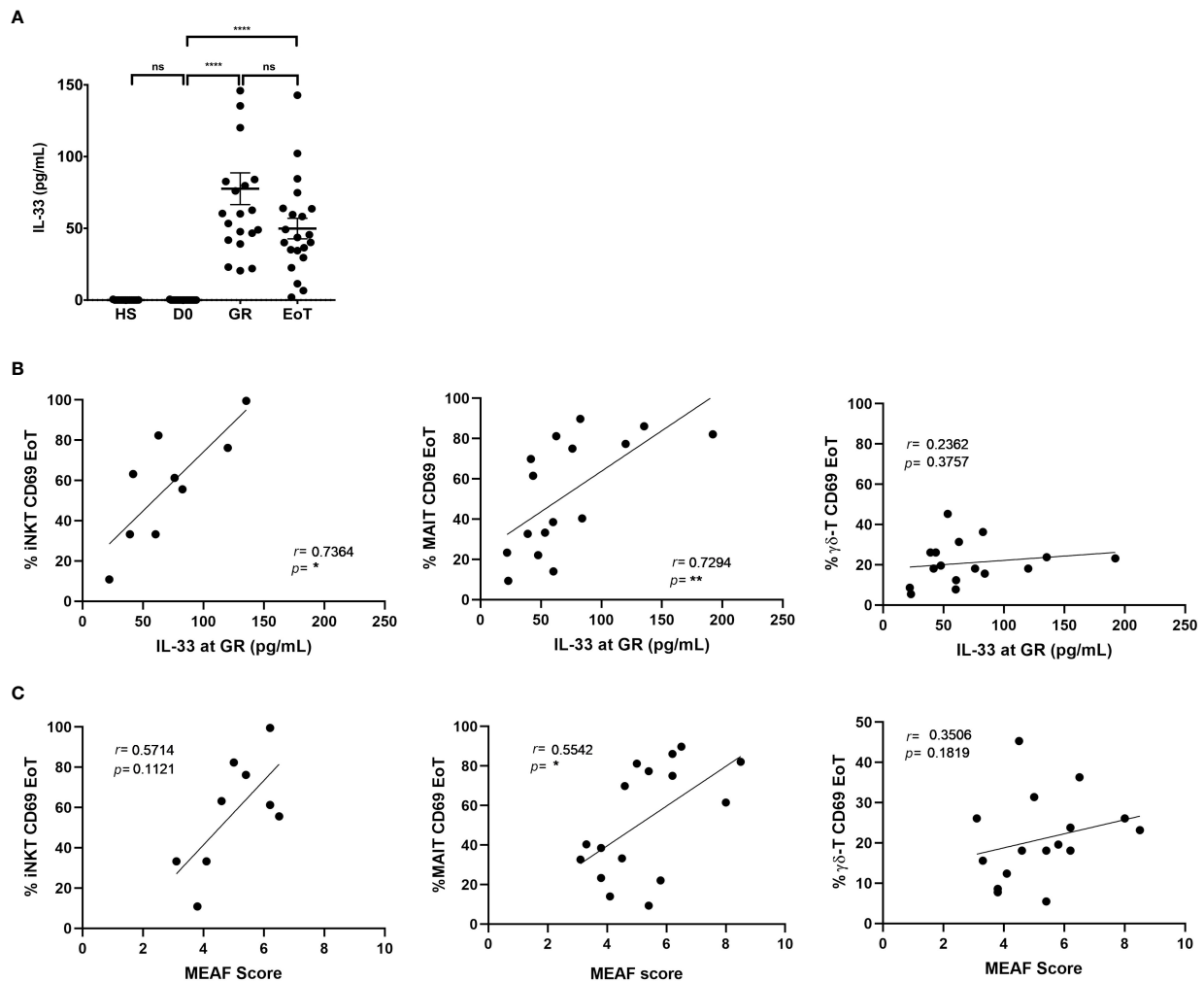


FIGURE 3

Analysis of the association between IL-33 release, ITC activation and liver injury in LT patients. **(A)** Serum levels of IL-33 (pg/mL) in healthy subjects (HS: $n=11$) and in patients prior to LT (D0: $n=21$), at graft reperfusion (GR: $n=21$), and at the end of LT (EoT: $n=21$). Horizontal bars represent means. Unpaired (independent) two-tailed Mann-Whitney U test. **** $p < 0.0001$, ns, not significant. **(B, C)** Spearman's rank correlation of CD69 expression (%) on blood ITC subsets (iNKT, MAIT, $\gamma\delta$ -T cells) at the end of LT and serum levels of IL-33 at graft reperfusion ($n=9-16$) **(B)** or MEAF score ($n=9-16$) **(C)**. Of note, iNKT cells could not be detected in 7 out of 16 patients at the end of LT. Analysis was performed by Spearman test. Each symbol represents one LT patient.

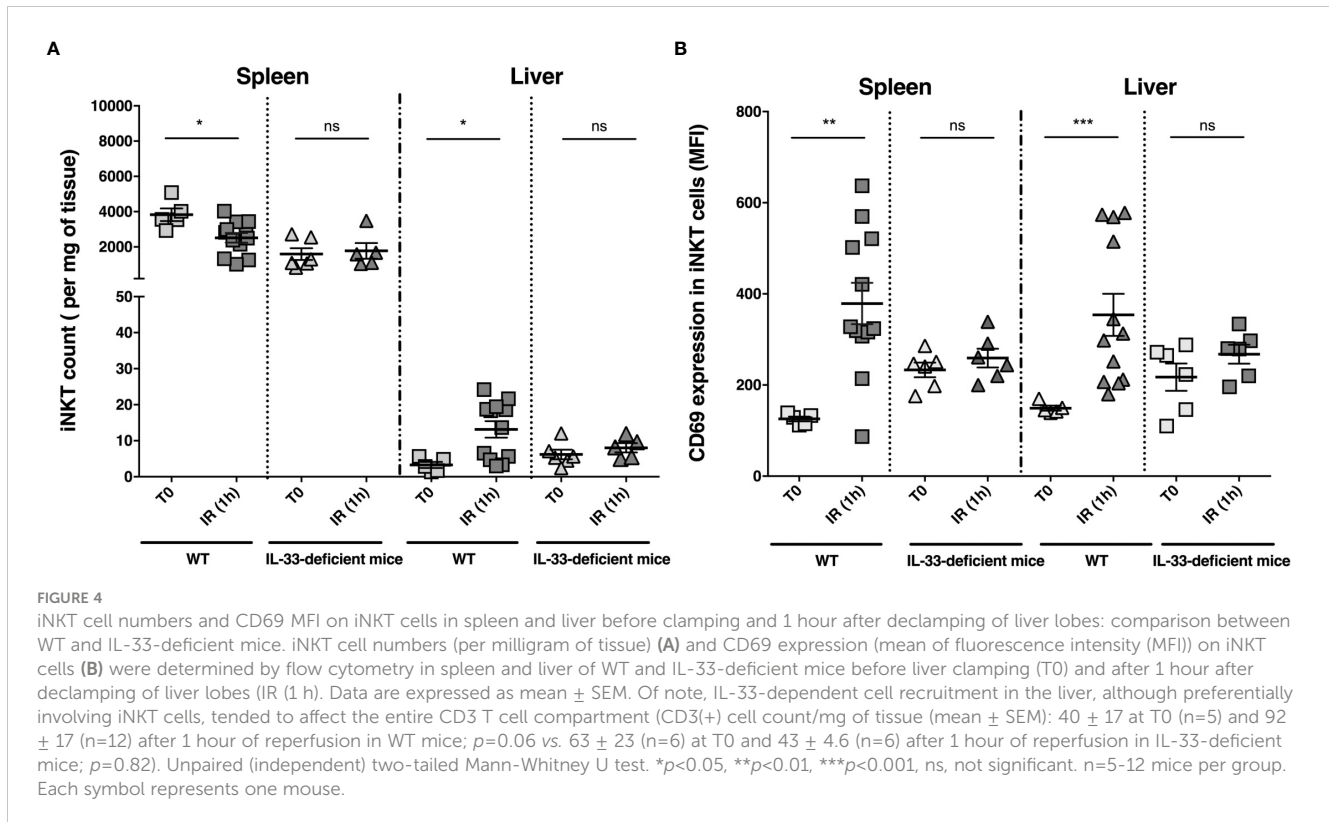
(MFI) surface expression level of the early activation marker CD69) of iNKT cells were determined in the spleen and liver in WT and IL-33-deficient mice after 1 hour of reperfusion. Flow cytometry gating strategy to identify iNKT cells in mice is shown in [Supplementary Figure 11](#). As depicted in [Figure 4](#), the number of iNKT cells decreased in the spleen and increased in the liver of WT mice ([Figure 4A](#) and [Supplementary Figure 12](#)), while being activated ([Figure 4B](#) and [Supplementary Figure 13](#)). On the contrary, IL33-deficient mice showed neither recruitment ([Figure 4A](#)) nor activation of iNKT cells ([Figure 4B](#)) in the liver, demonstrating that recruitment and activation of iNKT cells after liver IR depends on IL-33.

Discussion

This work provides initial evidence in humans of general and preferential activation of the circulating iNKT cell compartment in the acute sterile inflammation sequence occurring during LT.

Two lines of evidence support the hypothesis that early iNKT cell activation shown at the end of LT could be driven by the alarmin IL-33, which is released in circulation and reaches a peak immediately after graft reperfusion (40): **i**) activation of iNKT cells at the end of LT was closely associated with release of IL-33 immediately after graft reperfusion; **ii**) in a mouse model of liver IRI, early activation of iNKT cells depended on endogenous IL-33, as attested by its virtual loss when WT mice were replaced by IL-33-deficient mice.

In humans, although iNKT cells are rapidly activated in response to IL-33 alone (48), co-signals provided by the pro-inflammatory cytokines IL-12 and IL-18 or by TCR-engagement could also contribute to the amplitude of iNKT cell activation observed in patients at the end of LT. However, during LT, there was no correlation between serum levels of the two pro-inflammatory cytokines and activation of iNKT cells, suggesting that, unlike IL-33, IL-12 and IL-18 were not sufficient



by themselves to significantly induce iNKT cell activation, even though we cannot exclude the involvement of IL-12 as an effective coagent of IL-33, due to its high baseline pre-LT levels. Furthermore, no TCR internalization on iNKT cells could be detected, which does not suggest involvement of a TCR ligand.

By providing the *princeps* observation that iNKT cells could be activated in response to IL-33 released as an alarmin during LT, our study extends to humans the new concept of a biological axis of iNKT cells and IL-33, involved in alerting and controlling the immune cells during sterile inflammation. However, our study is based on a single condition of sterile inflammation, namely LT, implying a population of patients with iNKT cell biology altered at baseline (see Figure 1, and (49, 50)) and having received immunosuppression. In this clinical setting, we should therefore highlight the limitation of our phenotypic analysis, due to the very low events of iNKT cells, which are virtually absent in one third of patients.

Another limitation of our study is the origin of iNKT cells that are detected among recipient PBMC, namely transplant-derived versus host origin. Although microchimerism of hematopoietic cells has not been documented during transplantation procedure in LT recipients, we cannot exclude early recirculation of liver resident iNKT cells from the donor liver during this time-sequence. However, the fact that we did not observe an increase in the frequency of iNKT within PBMC in recipient patients between the beginning and the end of LT, suggests that this phenomenon, if it occurs, is still marginal.

An important objective now would be to determine whether the IL-33/iNKT cell biological axis contributes to the severity of IRI associated with LT. In fact, in our mouse model of liver IR, IL-33 and iNKT cells were separately deleterious as evidenced by

attenuation of IRI in IL-33-deficient mice (40) and iNKT cell-deficient mice (see Supplementary Figure 9 and Supplementary Figure 10), respectively. In a remarkably similar fashion, when considering the setting of human LT, we previously reported that IL-33 release at reperfusion was positively correlated with cardinal features of early liver injury-associated disorders after LT (40). The possibility that activation of iNKT cells is also closely associated with IR manifestations during LT, which is suggested in the present study by a trend toward positive correlation between the proportion of activated iNKT cells and the MEAF score, remains to be demonstrated in a larger cohort of patients.

Although the precise functions and associated mechanisms of iNKT cells necessitate further investigation, their possible action *via* IFN- γ or/and IL-17A secretion, as reported in mouse IRI models of kidney IRI (12, 13, 17), merits special attention.

Unlike the mouse, resident iNKT cells in human liver are not abundant (% among T lymphocytes: 0.1 to 1.0 vs. 5 to 40 in mouse) (51–53). Since our analysis is restricted to peripheral blood, it is difficult to determine whether activation of circulating iNKT cells mirrors their migration into the liver. However, this hypothesis is in line with our data in mice showing that iNKT cell activation in the periphery (spleen) driven by liver IR is accompanied by their recruitment to the liver. In all cases, we assume that both host-derived and graft-resided iNKT cells are targeted by IL-33, thereby causing graft dysfunction in the early phase of LT.

Another important aim of our study was to determine whether during LT, IL-33 also drives activation of the other two main circulating ITC components, namely MAIT and $\gamma\delta$ -T cells. As expected, the two non-conventional T cell components shared with iNKT cells a preferential activation during LT, in accordance

with their well-recognized hyperreactivity to endogenous cellular stress elements. Of note, as with iNKT cells, MAIT and $\gamma\delta$ -T cells displayed a profound number defect in patients awaiting LT, in accordance with previous reports (49, 54), thereby suggesting a general and coordinated “innateness” alteration. Despite this, as was the case for iNKT cells, activation of MAIT cells during LT was closely associated with both early release of IL-33 and severity of liver dysfunction after graft reperfusion. Future studies using mice lacking MAIT cells (MR1-deficient mice) and IL-33-deficient mice overexpressing MAIT cells (IL-33^{Gt/Gt} x V α 19i TCR transgenic mice) will allow to directly test the existence of a deleterious IL-33/MAIT cell axis during liver IRI.

In clear contrast to activation of MAIT cells, activation of $\gamma\delta$ -T cells during LT did not correlate with early release of IL-33. This difference may be explained by the fact that, unlike iNKT and MAIT cells (12, 38, 39, 46), $\gamma\delta$ -T cells do not seem directly targeted by IL-33 (55). Of course, future studies dedicated to $\gamma\delta$ -T cells during LT will need to take into account the significant qualitative differences between the two major $\gamma\delta$ -T contingents present in the blood (i.e., δ 1 and δ 2).

Interestingly, this response pattern within the ITC compartment is similar to that reported in the acute response to COVID-19 infection (56), in which activation of all three ITC subsets also occurs. In this infection condition, activation of iNKT and MAIT cells, but not $\gamma\delta$ -T cells, was correlated with both IL-18 secretion and disease severity. Since IL-18 is known to fully activate iNKT and MAIT cell functions in synergy with IL-33 (12, 38, 39, 46), it remains to be investigated whether IL-33 might be a common and key component in infection and sterile inflammation conditions, driving MAIT and iNKT cells to initiate the clinical course and to determine disease severity. In this context, special attention should also be given to the capacity attributed to iNKT and MAIT cells (57–60), as well as IL-33 (37), to lead to repair response. Longitudinal analysis after LT will help to determine whether MAIT and iNKT cell activation persists over time and may be associated with protective mechanisms in relation with IL-33.

More generally, additional analyses comparing other sterile inflammation conditions and infection of other origins will help to better evaluate the “sterile inflammation” specificity of our findings.

In summary, we have shown that LT drives general and preferential activation of the three main ITC components, namely iNKT, MAIT, and $\gamma\delta$ -T cells. In addition, we have identified iNKT and MAIT cells in connection with IL-33 as new key cellular factors and mechanisms of sterile inflammation in clinical settings. Of importance, our study also raises the possibility that the levels of activation (as assessed by CD69 expression) on MAIT and iNKT cells may be predictive of the clinical course of sterile inflammation conditions. Further investigations will be required to precisely assess their functions during sterile inflammation and its resolution after LT.

Taken as a whole, these findings should encourage further studies on MAIT and iNKT cells in sterile inflammation conditions so as to assess their potential as biomarkers and/or targets for immune intervention strategies.

Data availability statement

The raw data supporting the conclusions of this article will be made available by the authors, without undue reservation.

Ethics statement

The studies involving human participants were reviewed and approved by Comité consultatif de protection des personnes dans la recherche biomédicale Tours-Région Centre-Ouest 1 under registration number DC-2016-2651. The patients/participants provided their written informed consent to participate in this study. The animal study was reviewed and approved by COMETHEA Poitou Charentes, authorization no. 2016110211568800.

Author contributions

AR and CM developed methodology, performed investigation, and wrote the original draft. RB performed investigations and reviewed the manuscript. AB performed formal analysis and reviewed the manuscript. FD helped in creating the liver injury score and in analyzing liver tissue. AT, TH, and LP were involved in conceptualization and project administration and reviewed the manuscript. J-MG was involved in conceptualization, performed supervision and reviewed the manuscript. ES and AH were involved in conceptualization and project administration, performed supervision, and reviewed the manuscript. LB developed methodology, performed investigations, was involved in conceptualization and project administration, performed supervision, and wrote the original draft. All authors contributed to the article and approved the submitted version.

Funding

The study was supported by grants from “Agence de la Biomédecine” (Appel d’offres Recherche 2019), “Fondation de la Recherche Médicale” (Subvention Transplantation et Thérapie Cellulaire 2020; PME 202006011489), University Hospital Federation “SUPOrT” SURvival oPTimization in ORgan Transplantation, by INSERM, University Hospital of Poitiers, University Hospital of Tours, and University of Poitiers, and by program FEDER/CPER HABISAN of Nouvelle Aquitaine for their participation in equipment funding.

Acknowledgments

The authors would like to acknowledge Jeffrey Arsham, a professional American medical translator, who reviewed the manuscript. The authors also thank the staff of PREBIOS animal facility and the ImageUP platform of flow cytometry (University of Poitiers); Dr Jean-Philippe Girard for providing IL-33^{Gt/Gt} mice;

Dr Rémy Sindayigaya from the Department of Digestive Surgery and Liver Transplantation (University Hospital of Tours) for the clinical data; Dr Héloïse Ducouso from the Department of Urology (University Hospital of Poitiers) for mouse experiments; Sandrine Joffrion from the Biochemistry Laboratory (University Hospital of Poitiers) for ALT measurements; and the National Institute of Health Tetramer Core Facility for providing the CD1d and MRI tetramers.

Conflict of interest

The authors declare that the research was conducted in the absence of any commercial or financial relationships that could be construed as a potential conflict of interest.

References

- Bendelac A, Rivera MN, Park S-H, Roark JH. MOUSE CD1-SPECIFIC NK1 T CELLS: development, specificity, and function. *Annu Rev Immunol* (1997) 15:535–62. doi: 10.1146/annurev.immunol.15.1.535
- Godfrey DI, Uldrich AP, McCluskey J, Rossjohn J, Moody DB. The burgeoning family of unconventional T cells. *Nat Immunol* (2015) 16:1114–23. doi: 10.1038/ni.3298
- Wencker M, Turchinovich G, Di Marco Barros R, Deban L, Jandke A, Cope A, et al. Innate-like T cells straddle innate and adaptive immunity by altering antigen-receptor responsiveness. *Nat Immunol* (2014) 15:80–7. doi: 10.1038/ni.2773
- Paget C, Mallevaey T, Speak AO, Torres D, Fontaine J, Sheehan KCF, et al. Activation of invariant NKT cells by toll-like receptor 9-stimulated dendritic cells requires type I interferon and charged glycosphingolipids. *Immunity* (2007) 27:597–609. doi: 10.1016/j.immuni.2007.08.017
- Brigl M, Tatituri RVV, Watts GFM, Bhowruth V, Leadbetter EA, Barton N, et al. Innate and cytokine-driven signals, rather than microbial antigens, dominate in natural killer T cell activation during microbial infection. *J Exp Med* (2011) 208:1163–77. doi: 10.1084/jem.20102555
- Hossain M, Kubes P. Innate immune cells orchestrate the repair of sterile injury in the liver and beyond. *Eur J Immunol* (2019) 49:831–41. doi: 10.1002/eji.201847485
- Liew PX, Lee W-Y, Kubes P. iNKT cells orchestrate a switch from inflammation to resolution of sterile liver injury. *Immunity* (2017) 47:752–765.e5. doi: 10.1016/j.immuni.2017.09.016
- Ferhat MH, Robin A, Barbier L, Thierry A, Gombert J-M, Barbarin A, et al. The impact of invariant NKT cells in sterile inflammation: the possible contribution of the Alarmin/Cytokine IL-33. *Front Immunol* (2018) 9:2308. doi: 10.3389/fimmu.2018.02308
- Rock KL, Latz E, Ontiveros F, Kono H. The sterile inflammatory response. *Annu Rev Immunol* (2010) 28:321–42. doi: 10.1146/annurev-immunol-030409-101311
- van Golen RF, Reiniers MJ, Olthof PB, van Gulik TM, Heger M. Sterile inflammation in hepatic ischemia/reperfusion injury: present concepts and potential therapeutics: hepatic ischemia/reperfusion injury. *J Gastroenterol Hepatol* (2013) 28:394–400. doi: 10.1111/jgh.12072
- McDonald B, Kubes P. Innate immune cell trafficking and function during sterile inflammation of the liver. *Gastroenterology* (2016) 151:1087–95. doi: 10.1053/j.gastro.2016.09.048
- Ferhat M, Robin A, Giraud S, Sena S, Goujon J-M, Touchard G, et al. Endogenous IL-33 contributes to kidney ischemia-reperfusion injury as an alarmin. *J Am Soc Nephrol* (2018) 29:1272–88. doi: 10.1681/ASN.2017060650
- Li L, Huang L, Sung SJ, Lobo PI, Brown MG, Gregg RK, et al. NKT cell activation mediates neutrophil IFN- γ production and renal ischemia-reperfusion injury. *J Immunol* (2007) 178:5899–911. doi: 10.4049/jimmunol.178.9.5899
- Zimmerman M, Martin A, Yee J, Schiller J, Hong J. Natural killer T cells in liver ischemia-reperfusion injury. *J Clin Med* (2017) 6:41. doi: 10.3390/jcm6040041
- Lappas CM, Day Y-J, Marshall MA, Engelhard VH, Linden J. Adenosine A2A receptor activation reduces hepatic ischemia reperfusion injury by inhibiting CD1d-dependent NKT cell activation. *J Exp Med* (2006) 203:2639–48. doi: 10.1084/jem.20061097
- Wang Z-K, Xue L, Wang T, Wang X-J, Su Z-Q. Infiltration of invariant natural killer T cells occur and accelerate brain infarction in permanent ischemic stroke in mice. *Neurosci Lett* (2016) 633:62–8. doi: 10.1016/j.neulet.2016.09.010

Publisher's note

All claims expressed in this article are solely those of the authors and do not necessarily represent those of their affiliated organizations, or those of the publisher, the editors and the reviewers. Any product that may be evaluated in this article, or claim that may be made by its manufacturer, is not guaranteed or endorsed by the publisher.

Supplementary material

The Supplementary Material for this article can be found online at: <https://www.frontiersin.org/articles/10.3389/fimmu.2023.1099529/full#supplementary-material>

- Li L, Huang L, Vergis AL, Ye H, Bajwa A, Narayan V, et al. IL-17 produced by neutrophils regulates IFN- γ -mediated neutrophil migration in mouse kidney ischemia-reperfusion injury. *J Clin Invest* (2010) 120:331–42. doi: 10.1172/JCI38702
- Shimamura K, Kawamura H, Nagura T, Kato T, Naito T, Kameyama H, et al. Association of NKT cells and granulocytes with liver injury after reperfusion of the portal vein. *Cell Immunol* (2005) 234:31–8. doi: 10.1016/j.cellimm.2005.04.022
- Richards JA, Wigmore SJ, Anderton SM, Howie SEM. NKT cells are important mediators of hepatic ischemia-reperfusion injury. *Transpl Immunol* (2017) 45:15–21. doi: 10.1016/j.trim.2017.08.002
- Kuboki S, Sakai N, Tschöp J, Edwards MJ, Lentsch AB, Caldwell CC. Distinct contributions of CD4⁺ T cell subsets in hepatic ischemia/reperfusion injury. *Am J Physiol-Gastrointest Liver Physiol* (2009) 296:G1054–9. doi: 10.1152/ajpgi.90464.2008
- Savransky V, Molls RR, Burne-Taney M, Chien C-C, Racusen L, Rabb H. Role of the T-cell receptor in kidney ischemia-reperfusion injury. *Kidney Int* (2006) 69:233–8. doi: 10.1038/sj.ki.5000038
- Leite-de-Moraes MC, Hameg A, Arnould A, Machavoine F, Koezuka Y, Schneider E, et al. A distinct IL-18-Induced pathway to fully activate NK T lymphocytes independently from TCR engagement. *J Immunol* (1999) 163:5871–6. doi: 10.4049/jimmunol.163.11.5871
- Schmitz J, Owyang A, Oldham E, Song Y, Murphy E, McClanahan TK, et al. IL-33, an interleukin-1-like cytokine that signals via the IL-1 receptor-related protein ST2 and induces T helper type 2-associated cytokines. *Immunity* (2005) 23:479–90. doi: 10.1016/j.immuni.2005.09.015
- Liew FY, Girard J-P, Turnquist HR. Interleukin-33 in health and disease. *Nat Rev Immunol* (2016) 16:676–89. doi: 10.1038/nri.2016.95
- Moussion C, Ortega N, Girard J-P. The IL-1-Like cytokine IL-33 is constitutively expressed in the nucleus of endothelial cells and epithelial cells in vivo: a novel 'Alarmin'? *PLoS One* (2008) 3:e3331. doi: 10.1371/journal.pone.0003331
- Yazdani HO, Chen H-W, Tohme S, Tai S, van der Windt DJ, Loughran P, et al. IL-33 exacerbates liver sterile inflammation by amplifying neutrophil extracellular trap formation. *J Hepatol* (2018) 68:130–9. doi: 10.1016/j.jhep.2017.09.010
- Li D, Guabiraba R, Besnard A-G, Komai-Koma M, Jabir MS, Zhang L, et al. IL-33 promotes ST2-dependent lung fibrosis by the induction of alternatively activated macrophages and innate lymphoid cells in mice. *J Allergy Clin Immunol* (2014) 134:1422–1432.e11. doi: 10.1016/j.jaci.2014.05.011
- Luo Q, Fan Y, Lin L, Wei J, Li Z, Li Y, et al. Interleukin-33 protects ischemic brain injury by regulating specific microglial activities. *Neuroscience* (2018) 385:75–89. doi: 10.1016/j.neuroscience.2018.05.047
- Akcaay A, Nguyen Q, He Z, Turkmen K, Won Lee D, Hernando AA, et al. IL-33 exacerbates acute kidney injury. *J Am Soc Nephrol* (2011) 22:2057–67. doi: 10.1681/ASN.2010091011
- Michaudel C, Mackowiak C, Mailet I, Fauconnier L, Akdis CA, Sokolowska M, et al. Ozone exposure induces respiratory barrier biphasic injury and inflammation controlled by IL-33. *J Allergy Clin Immunol* (2018) 142:942–58. doi: 10.1016/j.jaci.2017.11.044
- Gadani SP, Walsh JT, Smirnov I, Zheng J, Kipnis J. The glia-derived alarmin IL-33 orchestrates the immune response and promotes recovery following CNS injury. *Neuron* (2015) 85:703–9. doi: 10.1016/j.neuron.2015.01.013
- Haraldsen G, Balogh J, Pollheimer J, Sponheim J, Küchler AM. Interleukin-33 – cytokine of dual function or novel alarmin? *Trends Immunol* (2009) 30:227–33. doi: 10.1016/j.it.2009.03.003

33. Cayrol C, Girard J-P. Interleukin-33 (IL-33): a nuclear cytokine from the IL-1 family. *Immunol Rev* (2018) 281:154–68. doi: 10.1111/imr.12619
34. McSorley HJ, Smyth DJ. IL-33: a central cytokine in helminth infections. *Semin Immunol* (2021) 53:101532. doi: 10.1016/j.smim.2021.101532
35. Guo H, Bossila EA, Ma X, Zhao C, Zhao Y. Dual immune regulatory roles of interleukin-33 in pathological conditions. *Cells* (2022) 11:3237. doi: 10.3390/cells11203237
36. Riedel J-H, Becker M, Kopp K, Düster M, Brix SR, Meyer-Schwesinger C, et al. IL-33-mediated expansion of type 2 innate lymphoid cells protects from progressive glomerulosclerosis. *J Am Soc Nephrol* (2017) 28:2068–80. doi: 10.1681/ASN.2016080877
37. Dwyer GK, D'Cruz LM, Turnquist HR. Emerging functions of IL-33 in homeostasis and immunity. *Annu Rev Immunol* (2022) 40:15–43. doi: 10.1146/annurev-immunol-101320-124243
38. Bourgeois E, Van LP, Samson M, Diem S, Barra A, Roga S, et al. The pro-Th2 cytokine IL-33 directly interacts with invariant NKT and NK cells to induce IFN- γ production. *Eur J Immunol* (2009) 39:1046–55. doi: 10.1002/eji.200838575
39. Smithgall MD, Comeau MR, Park Yoon B-R, Kaufman D, Armitage R, Smith DE. IL-33 amplifies both Th1- and Th2-type responses through its activity on human basophils, allergen-reactive Th2 cells, iNKT and NK cells. *Int Immunol* (2008) 20:1019–30. doi: 10.1093/intimm/dxn060
40. Barbier L, Robin A, Sindayigaya R, Ducouso H, Dujardin F, Thierry A, et al. Endogenous interleukin-33 acts as an alarmin in liver ischemia-reperfusion and is associated with injury after human liver transplantation. *Front Immunol* (2021) 12:744927. doi: 10.3389/fimmu.2021.744927
41. Pareja E, Cortes M, Hervás D, Mir J, Valdivieso A, Castell JV, et al. A score model for the continuous grading of early allograft dysfunction severity: GRADING EARLY ALLOGRAFT DYSFUNCTION. *Liver Transpl* (2015) 21:38–46. doi: 10.1002/lt.23990
42. Cui J, Shin T, Kawano T, Sato H, Kondo E, Taura I, et al. Requirement for V α 14 NKT cells in IL-12-Mediated rejection of tumors. *Science* (1997) 278:1623–6. doi: 10.1126/science.278.5343.1623
43. Pichery M, Mirey E, Mercier P, Lefrançais E, Dujardin A, Ortega N, et al. Endogenous IL-33 is highly expressed in mouse epithelial barrier tissues, lymphoid organs, brain, embryos, and inflamed tissues: in situ analysis using a novel IL-33–LacZ gene trap reporter strain. *J Immunol* (2012) 188:3488–95. doi: 10.4049/jimmunol.1101977
44. Abe Y, Hines I, Zibari G, Pavlick K, Gray L, Kitagawa Y, et al. Mouse model of liver ischemia and reperfusion injury: method for studying reactive oxygen and nitrogen metabolites in vivo. *Free Radic Biol Med* (2009) 46:1–7. doi: 10.1016/j.freeradbiomed.2008.09.029
45. Daniel L, Tassery M, Lateur C, Thierry A, Herbelin A, Gombert J-M, et al. Allotransplantation is associated with exacerbation of CD8 T-cell senescence: the particular place of the innate CD8 T-cell component. *Front Immunol* (2021) 12:674016. doi: 10.3389/fimmu.2021.674016
46. Azzout M, Dietrich C, Machavoine F, Gastineau P, Bottier A, Lezmi G, et al. IL-33 enhances IFN γ and TNF α production by human MAIT cells: a new pro-Th1 effect of IL-33. *Int J Mol Sci* (2021) 22:10602. doi: 10.3390/ijms221910602
47. Chen Y, Tian Z. Innate lymphocytes: pathogenesis and therapeutic targets of liver diseases and cancer. *Cell Mol Immunol* (2021) 18:57–72. doi: 10.1038/s41423-020-00561-z
48. Thierry A, Giraud S, Robin A, Barra A, Bridoux F, Ameteau V, et al. The alarmin concept applied to human renal transplantation: evidence for a differential implication of HMGB1 and IL-33. *PloS One* (2014) 9:e88742. doi: 10.1371/journal.pone.0088742
49. Huang W, He W, Shi X, He X, Dou L, Gao Y. The role of CD1d and MR1 restricted T cells in the liver. *Front Immunol* (2018) 9:2424. doi: 10.3389/fimmu.2018.02424
50. Bandyopadhyay K, Marrero I, Kumar V. NKT cell subsets as key participants in liver physiology and pathology. *Cell Mol Immunol* (2016) 13:337–46. doi: 10.1038/cmi.2015.115
51. Paquin-Proulx D, Greenspun BC, Pasquet L, Strunz B, Aleman S, Falconer K, et al. IL13R α 2 expression identifies tissue-resident IL-22-producing PLZF $^{+}$ innate T cells in the human liver: Dominant paquin-proulx et al. *Eur J Immunol* (2018) 48:1329–35. doi: 10.1002/eji.201747334
52. Cheng X, Tan X, Wang W, Zhang Z, Zhu R, Wu M, et al. Long-Chain Acylcarnitines Induce Senescence of Invariant Natural Killer T Cells in Hepatocellular Carcinoma. *Cancer Res* (2022) 83, 582–94. doi: 10.1158/0008-5472.CAN-22-2273
53. Ishihara S, Nieda M, Kitayama J, Osada T, Yabe T, Kikuchi A, et al. α -glycosylceramides enhance the antitumor cytotoxicity of hepatic lymphocytes obtained from cancer patients by activating CD3–CD56 $^{+}$ NK cells in vitro. *J Immunol* (2000) 165:1659–64. doi: 10.4049/jimmunol.165.3.1659
54. Zhang Y, Kong D, Wang H. Mucosal-associated invariant T cell in liver diseases. *Int J Biol Sci* (2020) 16:460–70. doi: 10.7150/ijbs.39016
55. Duault C, Franchini DM, Familiades J, Cayrol C, Roga S, Girard J-P, et al. TCRV γ 9 γ δ T cell response to IL-33: a CD4 T cell–dependent mechanism. *J Immunol* (2016) 196:493–502. doi: 10.4049/jimmunol.1500260
56. Jouan Y, Guillon A, Gonzalez L, Perez Y, Boisseau C, Ehrmann S, et al. Phenotypical and functional alteration of unconventional T cells in severe COVID-19 patients. *J Exp Med* (2020) 217:e20200872. doi: 10.1084/jem.20200872
57. Trottein F, Paget C. Natural killer T cells and mucosal-associated invariant T cells in lung infections. *Front Immunol* (2018) 9:1750. doi: 10.3389/fimmu.2018.01750
58. Hinks TSC, Marchi E, Jabeen M, Olshansky M, Kurioka A, Pediongco TJ, et al. Activation and in vivo evolution of the MAIT cell transcriptome in mice and humans reveals tissue repair functionality. *Cell Rep* (2019) 28:3249–3262.e5. doi: 10.1016/j.celrep.2019.07.039
59. Lamichhane R, Schneider M, de la Harpe SM, Harrop TWR, Hannaway RF, Dearden PK, et al. TCR- or cytokine-activated CD8 $^{+}$ mucosal-associated invariant T cells are rapid polyfunctional effectors that can coordinate immune responses. *Cell Rep* (2019) 28:3061–3076.e5. doi: 10.1016/j.celrep.2019.08.054
60. Leng T, Akther HD, Hackstein C-P, Powell K, King T, Friedrich M, et al. TCR and inflammatory signals tune human MAIT cells to exert specific tissue repair and effector functions. *Cell Rep* (2019) 28:3077–3091.e5. doi: 10.1016/j.celrep.2019.08.050

COPYRIGHT

© 2023 Robin, Mackowiak, Bost, Dujardin, Barbarin, Thierry, Hauet, Pellerin, Gombert, Salamé, Herbelin and Barbier. This is an open-access article distributed under the terms of the [Creative Commons Attribution License \(CC BY\)](https://creativecommons.org/licenses/by/4.0/). The use, distribution or reproduction in other forums is permitted, provided the original author(s) and the copyright owner(s) are credited and that the original publication in this journal is cited, in accordance with accepted academic practice. No use, distribution or reproduction is permitted which does not comply with these terms.