



Optogenetic control of beta-carotene bioproduction in yeast across multiple lab-scales

Sylvain Pouzet, Jessica Cruz-Ramón, Matthias Le Bec, Céline Cordier, Alvaro Banderas, Simon Barral, Sara Castaño-Cerezo, Thomas Lautier, Gilles Truan, Pascal Hersen

► To cite this version:

Sylvain Pouzet, Jessica Cruz-Ramón, Matthias Le Bec, Céline Cordier, Alvaro Banderas, et al.. Optogenetic control of beta-carotene bioproduction in yeast across multiple lab-scales. *Frontiers in Bioengineering and Biotechnology*, 2023, 11, pp.1085268. 10.3389/fbioe.2023.1085268 . hal-04247146

HAL Id: hal-04247146

<https://hal.science/hal-04247146>

Submitted on 18 Oct 2023

HAL is a multi-disciplinary open access archive for the deposit and dissemination of scientific research documents, whether they are published or not. The documents may come from teaching and research institutions in France or abroad, or from public or private research centers.

L'archive ouverte pluridisciplinaire **HAL**, est destinée au dépôt et à la diffusion de documents scientifiques de niveau recherche, publiés ou non, émanant des établissements d'enseignement et de recherche français ou étrangers, des laboratoires publics ou privés.



Distributed under a Creative Commons Attribution 4.0 International License



OPEN ACCESS

EDITED BY

Yun Chen,
Chalmers University of Technology,
Sweden

REVIEWED BY

Antonios Michael Makris,
Centre for Research and Technology
Hellas (CERTH), Greece
Zengyi Shao,
Iowa State University, United States

*CORRESPONDENCE

Pascal Hersen,
✉ pascal.hersen@curie.fr

SPECIALTY SECTION

This article was submitted to
Synthetic Biology,
a section of the journal
Frontiers in Bioengineering
and Biotechnology

RECEIVED 31 October 2022

ACCEPTED 16 January 2023

PUBLISHED 06 February 2023

CITATION

Pouzet S, Cruz-Ramón J, Le Bec M,
Cordier C, Banderas A, Barral S,
Castaño-Cerezo S, Lautier T, Truan G and
Hersen P (2023), Optogenetic control of
beta-carotene bioproduction in yeast
across multiple lab-scales.
Front. Bioeng. Biotechnol. 11:1085268.
doi: 10.3389/fbioe.2023.1085268

COPYRIGHT

© 2023 Pouzet, Cruz-Ramón, Le Bec,
Cordier, Banderas, Barral, Castaño-
Cerezo, Lautier, Truan and Hersen. This is
an open-access article distributed under
the terms of the [Creative Commons
Attribution License \(CC BY\)](https://creativecommons.org/licenses/by/4.0/). The use,
distribution or reproduction in other
forums is permitted, provided the original
author(s) and the copyright owner(s) are
credited and that the original publication in
this journal is cited, in accordance with
accepted academic practice. No use,
distribution or reproduction is permitted
which does not comply with these terms.

Optogenetic control of beta-carotene bioproduction in yeast across multiple lab-scales

Sylvain Pouzet¹, Jessica Cruz-Ramón¹, Matthias Le Bec¹,
Céline Cordier¹, Alvaro Banderas¹, Simon Barral¹,
Sara Castaño-Cerezo², Thomas Lautier^{2,3}, Gilles Truan² and
Pascal Hersen^{1*}

¹Institut Curie, Université PSL, Sorbonne Université, CNRS UMR168, Laboratoire Physico Chimie Curie, Paris, France, ²Toulouse Biotechnology Institute, Université de Toulouse, Centre National de la Recherche Scientifique (CNRS), Institut National de Recherche pour l'Agriculture, l'Alimentation et l'Environnement (INRAE), Institut National des Sciences Appliquées (INSA), Toulouse, France, ³CNRS@CREATE, Singapore Institute of Food and Biotechnology Innovation, Agency for Science Technology and Research, Singapore, Singapore

Optogenetics arises as a valuable tool to precisely control genetic circuits in microbial cell factories. Light control holds the promise of optimizing bioproduction methods and maximizing yields, but its implementation at different steps of the strain development process and at different culture scales remains challenging. In this study, we aim to control beta-carotene bioproduction using optogenetics in *Saccharomyces cerevisiae* and investigate how its performance translates across culture scales. We built four lab-scale illumination devices, each handling different culture volumes, and each having specific illumination characteristics and cultivating conditions. We evaluated optogenetic activation and beta-carotene production across devices and optimized them both independently. Then, we combined optogenetic induction and beta-carotene production to make a light-inducible beta-carotene producer strain. This was achieved by placing the transcription of the bifunctional lycopene cyclase/phytoene synthase CrtYB under the control of the pC120 optogenetic promoter regulated by the EL222-VP16 light-activated transcription factor, while other carotenogenic enzymes (CrtI, CrtE, tHMG) were expressed constitutively. We show that illumination, culture volume and shaking impact differently optogenetic activation and beta-carotene production across devices. This enabled us to determine the best culture conditions to maximize light-induced beta-carotene production in each of the devices. Our study exemplifies the stakes of scaling up optogenetics in devices of different lab scales and sheds light on the interplays and potential conflicts between optogenetic control and metabolic pathway efficiency. As a general principle, we propose that it is important to first optimize both components of the system independently, before combining them into optogenetic producing strains to avoid extensive troubleshooting. We anticipate that our results can help designing both strains and devices that could eventually lead to larger scale systems in an effort to bring optogenetics to the industrial scale.

KEYWORDS

Optogenetics, beta-carotene, bioproduction, metabolic engineering, synthetic biology, DIY, yeast, *Saccharomyces cerevisiae*

Introduction

Advances in bioproduction using yeast and bacteria as microbial cell factories have enabled significant feats in metabolic engineering (Galanie et al., 2015; Srinivasan and Smolke, 2020) and allow for the unprecedented production of complex chemicals through more sustainable processes. However, despite impressive progress, the compound of interest is often produced at relatively low levels (Chen et al., 2020). To increase production yields, forward metabolic engineering (rational design and Design-Build-Test-Learn Cycles) (Chen et al., 2020) and reverse metabolic engineering (mutagenesis and directed evolution) (Oud et al., 2012) have emerged as preferred strategies to increase the carbon flux and redirect more cellular resources towards the production of the compound of interest. These strain engineering strategies are increasingly benefiting from progress in computational approaches (multiomics (Subramanian et al., 2020; Pereira et al., 2021), genome-wide metabolic models (Pereira et al., 2021), machine learning (Sahu et al., 2021)).

To improve yields, complementary strategies mostly focus at the bioprocess level. There, the key is to best cope with metabolic burden, *i.e.*, the potential metabolic load and stress created during production, such that growth is least impaired, and productivity maintained. To this end, tools and methods to decouple growth from production have been continuously perfected since the first production of antibiotics from fungi (Martin and Demain, 1980). Inducible systems (usually relying on transcriptional activation) are often employed to control the shift from the growth phase (building up biomass without production nor burden) to the production phase (which focuses on production with minimal growth).

Moving beyond this two-step cultivation strategy, several recent studies showed that controlling growth *versus* production in a dynamic manner can further increase production yields (Zhao et al., 2018; Lalwani et al., 2021a). Finely controlling the induction of the metabolic pathways leading to production is critical for such “dynamic regulation” (Tan and Prather, 2017) strategies. The inducer must be reversible, responsive, easy to handle, and cheap. Today, mostly chemical inducers are used. But once injected in large volumes, chemical inducers take time to diffuse uniformly, which leads to potential induction heterogeneity, and cumbersome medium changes are usually required to reverse their action. Besides, metabolizable carbon-sources used as inducers (galactose, methanol, arabinose) exhibit slow response dynamics and can be expensive at larger scales. In contrast, the use of light as an inducer (optogenetics) is a very attractive strategy since the responsiveness and its reversibility are instantaneous.

Optogenetics has already been applied to bioproduction, though only in a handful of lab-scale studies. Light has mostly been used to control transcription irreversibly (Raghavan et al., 2020) or reversibly (Zhao et al., 2018; Senoo et al., 2019; Ding et al., 2020; Lalwani et al., 2020), to direct the assembly of enzymatic clusters (Zhao et al., 2019), or to tune the composition of microbial consortia (Lalwani et al., 2021b). Development of an optogenetic producer strain at the lab-scale requires the use of specific illumination devices. In this paper, we present and compare four devices that can be used at every step of the strain

development process: from 24-well plate systems (OptoBox (Gerhardt et al., 2016)), to simple small-scale starter cultures (OptoTubes), larger-scale batch cultures (OptoFlasks), and devices that allow multiple-parameter control of the culture conditions (eVOLVER (Wong et al., 2018)).

We used the EL222 optogenetic system, a single-component light-oxygen-voltage-sensing (LOV)-based light-activated synthetic transcription factor derived from the bacteria *Erythrobacter litoralis*. EL222 offers rapid activation ($\tau_{\text{on}} = 5$ s) and deactivation kinetics ($\tau_{\text{off}} = 30$ s) (Motta-Mena et al., 2014) and is an established system in yeast (Zhao et al., 2018).

Beta-carotene is a terpene known for its characteristic yellow/orange color. Its photochemical and antioxidant properties make this carotenoid a valuable molecule in a wide range of industries, including cosmetics (sun protection), health (antioxidant, dietary supplement as provitamin A), feed and food (health and coloring) (Bogacz-Radomska and Harasym, 2018). Major sources of beta-carotene are chemical synthesis (enol-ether condensation or Wittig condensation of beta-ionone (Ribeiro et al., 2011)) and extraction from plants (carrots, oil of palm fruit, and sweet potato) or naturally producing microorganisms (mostly the algae *Dunaliella* spp. and fungus *Blakeslea trispora*) (Bogacz-Radomska and Harasym, 2018). Beyond its industrial relevance, beta-carotene and other compounds of economic importance (artemisinine (Paddon et al., 2013), taxol (Nowrouzi et al., 2020), celastrol (Hansen et al., 2020)) originate from the isoprenoid pathway. Therefore, new improvements obtained using beta-carotene could also benefit the production of other compounds. In addition, production of a colorful compound that can be detected with the naked eye is a particularly convenient output for bioproduction studies. Hence, beta-carotene is often used as a proxy for various proofs-of-concept and genetic systems (Shaw et al., 2019; Liu et al., 2020; Duplus-Bottin et al., 2021; Benzinger et al., 2022).

In this study, we use the EL222 optogenetic system and the beta-carotene synthesis pathway to explore the importance of different culture parameters at various scales using four illumination devices. The constraints encountered at these different scales of lab culture foreshadow larger-scale potential challenges. Indeed, differences in illumination (light input, medium penetration, and device geometry) and the culture conditions (stirring and shaking, culture volume, gas exchange) between these scales can independently impact both genetic components: the activation of the optogenetic system and the bioproduction by the metabolic pathway. First, we detail the constructions of these four illumination devices and investigate how optogenetics translates across lab scales. Second, we optimize culture conditions to maximize beta-carotene production across devices and identify production constraints. Only then, as a third step, we combine optogenetic control with beta-carotene production. We investigate to what extent this optogenetic control of bioproduction recapitulates constraints identified independently for both genetic components and discuss the relationships between optogenetic activation and the resulting production. In a nutshell, we demonstrate how this three-step approach can help identify optogenetic, metabolic and scaling constraints to define the optimal parameters to drive beta-carotene production in response to light in the budding yeast *Saccharomyces cerevisiae* in multiple lab culture scales.

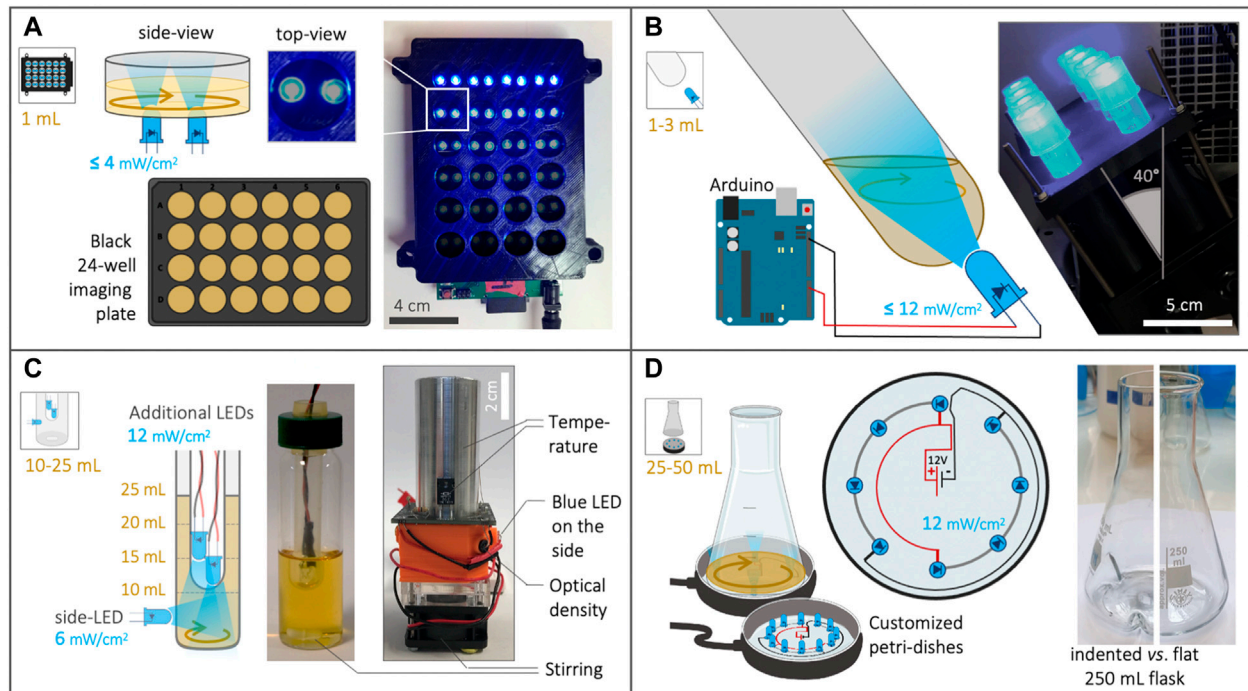


FIGURE 1

Description of the four optogenetic devices used in this study. (A) The OptoBox (adapted from Gerhardt et al., 2016) can independently illuminate 1 mL cultures in a 24-well plate placed in a shaking incubator. Two LEDs ($0\text{--}4\text{ mW/cm}^2$) illuminate each well from below and can be programmed. (B) The OptoTubes are used to illuminate 14 mL tubes (generally 3 mL cultures) using a LED ($0\text{--}12\text{ mW/cm}^2$) placed at the bottom of each tube. The OptoTubes can be programmed with an Arduino ($0\text{--}255\text{ u.a.}$) and be placed in a shaking incubator thanks to a dedicated 3D printed opaque holder. (C) The eVOLVER culture platform adapted from Wong et al., 2018 uses a DIY “sleeve” (right) where a glass vial (center) can be inserted, all connected to an Arduino. We built 16 of these units, and the temperature, stirring and illumination (via an additional side-LED: 6 mW/cm^2) can be controlled for each unit, while the growth rate and production of beta-carotene can be monitored. The lid of the glass vial was adapted to accommodate the input of more light using additional LEDs (12 mW/cm^2 each). (D) The OptoFlasks, in which custom-made illumination stands were built to hold different numbers of LEDs (12 mW/cm^2 each), on top of which the flasks (indented/baffled or flat) are positioned and can hold 25–50 mL cultures.

Results and discussion

Setting-up optogenetics in different lab-scale culture devices

OptoBox

The OptoBox, (*a.k.a.* The Light-Plate Apparatus (Gerhardt et al., 2016)—Figure 1A) was developed to illuminate 24-well imaging plates in a shaking incubator. Each well of the OptoBox contains two interchangeable LEDs connected to a Printed Circuit Board (PCB). Although the two LEDs can be different in order to be compatible with various optogenetic systems, we connected two blue LEDs (461 nm) to maximize light exposure for the EL222 optogenetic system. Programming of the device is particularly easy: the program can be set up online using the user-friendly software Iris, uploaded to an SD card, and plugged into the PCB. The programming consists of assigning each of the two LEDs an arbitrary value between 0 and 4,000 (for a given illumination pattern), corresponding, in our case, to an intensity of $0\text{--}4\text{ mW/cm}^2$ per LED (Supplementary Figure S1). The OptoBox provides a convenient tool to screen various strains or illumination conditions. The 24-well plates generally hold a culture volume of 1 mL per well and can be sealed with aluminum foil to prevent light leaking, culture spilling and evaporation. At the bottom

of the well-plates we use (see Methods), lies a $25\text{ }\mu\text{m}$ film that allows for gas exchanges and light penetration.

OptoTubes

To illuminate simple culture tubes with light, we designed a set of OptoTubes by positioning LEDs at the bottom of 14 mL glass test tubes (Figure 1B). The LEDs are directly connected to an Arduino’s Pulse-Width Modulation (PWM) pin for intermediate light intensities (from 0 to 255, corresponding to $0\text{--}12\text{ mW/cm}^2$)—(Supplementary Figures S1, S2). This is the simplest system to illuminate simple cultures of typically 3 mL, for either overnight cultures or specific, programmed, durations. Specific illumination patterns can also be accommodated by programming the Arduino. The inclination of the tubes and LEDs was designed to increase gas exchange during shaking in the incubator (See Supplementary Figure S2 and Supplementary File S1).

eVOLVER

The eVOLVER platform, adapted from Wong et al., 2018, comprises 16 independent culture units, in which a glass vial can be inserted (Figure 1C), each allowing a single automated yeast culture of 10–25 mL. For each unit, the temperature (heaters and thermistor) and stirring (rotating magnet in vial combined with disc-magnets on a

rotating fan) are controlled and the growth rate (infra-red LED and photodiodes) can be monitored semi-quantitatively.

Optogenetics was not included in the original design of the eVOLVER platform, but the addition of a LED in their culture unit PCB to illuminate the culture from the side of the device was anticipated, and we indeed took advantage of this option. We also added a photoresistor so that absorption of blue light in the medium can be monitored. Given that beta-carotene interacts with blue light (Pénicaud et al., 2011), its production in cells could be estimated using the blue-LED-photoresistor pair (Supplementary File S2) to obtain qualitative estimations of the cell density and beta-carotene production within the eVOLVER. To further increase the illumination of the cultures, we designed a custom lid: in the hollow lid ordinarily sealed using a removable silicon septum, an autoclavable cytometry tube is placed. Additional LEDs can be stacked inside this tube to illuminate the inside of the medium. Here, we distinguish between the side-LED of the original eVOLVER design (6 mW/cm²—external illumination) and the additional LEDs inserted from the top (internal illumination). Adding 1, 2, 3, or 4 additional LEDs was found to correspond to adding 6.7, 8.3, 9.3 and 9.4 mW/cm² of intensity, respectively, in the culture medium (See Supplementary Figure S1).

In our design, each eVOLVER unit is controlled by an individual Arduino Nano and each Arduino is connected to a computer *via* USB. Compared to the Khalil lab's fully integrated eVOLVER platform (Wong et al., 2018), we propose this more DIY and straightforward design for biologists with minimal knowledge of electronics, since our design circumvents the need to order and assemble various cards and PCBs (see Supplementary File 2). In terms of software, we developed a Node-Red program (detailed in Supplementary File 2 and available on Github) to communicate with the Arduinos in real-time, *via* the Firmata Arduino Template. This software handles the user interface used to set up and launch experiments, PID used to control temperature, illumination control and data-output. Using this platform containing 16 functional units and an efficient user-interface, we are able to quickly and easily vary multiple parameters at the same time (illumination, volume, stirring, temperature, strain) and thus achieve a high experimental throughput.

OptoFlasks

Shake-flasks are the standard culture container used to test strains before scaling up to pilot-scale bioreactors. In order to illuminate flasks, we arranged LEDs into petri-dishes, which were used as illumination stands to illuminate them from the bottom (Figure 1D, Supplementary Figure S3). LEDs were soldered in a circular pattern such that they line the outermost area of the bottom of the flask. Thus, in a shaking incubator, when the culture medium is driven to the sides of the flask and rotates along the round bottom of the flask, the exposure of the culture to light will be maximized. LEDs are soldered such that each receives 20 mA current, resulting in a measured 12 mW/cm² intensity per LED, similar to the additional LEDs of eVOLVER and the maximal value of the OptoTubes' LEDs (Supplementary Figure S1). Here, we used both flat-bottom flasks and indented-bottom (baffled) 250 mL flasks: the indentation creates turbulences in the liquid flow, which in turn incorporates more air in the culture medium and improves gas transfer. We tested volumes of 25 and 50 mL in 250 mL flat and indented flasks.

Devices and culture conditions influence optogenetic activation

To investigate how optogenetics translates at different scales, we tested the four optogenetic devices presented above. Each device has its own intrinsic properties: illumination modalities (disposition, number, controllability of the LEDs), geometries (which impact light diffusion and shaking), and ranges of culture volumes. Illumination, culture volume and shaking can be altered within each device, so that the influence of these factors on optogenetic activation can be identified.

We used the strain OPTO-EXP from the Avalos Lab (Zhao et al., 2018), a *Saccharomyces cerevisiae* CEN.PK2-1C-derived strain that contains the light-activated EL222-VP16 transcription factor under constitutive expression (pPGK1 promoter). Upon blue light illumination, a change of conformation induced *via* its flavin chromophore allows EL222 to dimerize, bind to its synthetic cognate pC120 promoter and activate the transcription of the downstream Green Fluorescent Protein (GFP) thanks to its VP16 transactivation domain (Figure 2A).

To test optogenetic activation in different devices and different growth conditions, YPD medium was first inoculated with the OPTO-EXP strain at 5.10⁶ cells/mL (OD₆₀₀ = 0.05), spread across culture containers, placed in illumination devices and illumination started at t0. During growth, as cell density increases, light penetration may be impaired and the amount of light received by each cell may decrease, leading to lower optogenetic activation. Therefore, to determine the best timepoint to obtain a readout of optogenetic activation during growth, we performed a time course experiment, measuring GFP levels every hour using cytometry (Supplementary Figure S4 and Methods). We determined that the highest activation per cell was reached at 6 h post-inoculation. Therefore, we standardized the optogenetic experiments using these parameters. As references, we measured fluorescence levels of GFP expressed from the strong and medium constitutive promoters pTDH3 and pADH1 (Figure 2B). To estimate background fluorescence, the autofluorescence of a WT non-producer strain (CEN.PK2-1C) was also measured in the different devices, averaged and subtracted to all datapoints.

By varying the intensity of the LEDs in the Optobox and OptoTubes and measuring the production of GFP (Figures 2C,D), we determined light-response curves. The shaking (250 rpm) and volumes (1 mL and 3 mL) were constant for each device. We obtained two sigmoidal response curves; the dynamic ranges started at 110 arbitrary units of fluorescence (a.u.) and increased to 1,014 and 1,236 a.u. for the OptoBox and the OptoTubes, respectively, resulting in 9.2- and 11.2-fold, a ~18% differences in max fluorescence between those two devices. In the OptoBox, maximal activation could almost be reached with one single LED operating at maximal intensity (4,000–4 mW/cm², for 1 mL). In the OptoTubes, the maximum activation threshold was reached when using maximum intensity (255–12 mW/cm², for 3 mL). The effective amount of light reaching the culture volume can be difficult to evaluate due to the geometry of the devices, the type of material and the thicknesses of the materials or media the light has to pass through. However, it is necessary to determine the minimal amount of light needed for maximal optogenetic activation as high doses of blue light can result in phototoxic effects (Grangateau et al., 2018; Enwemeka et al., 2021).

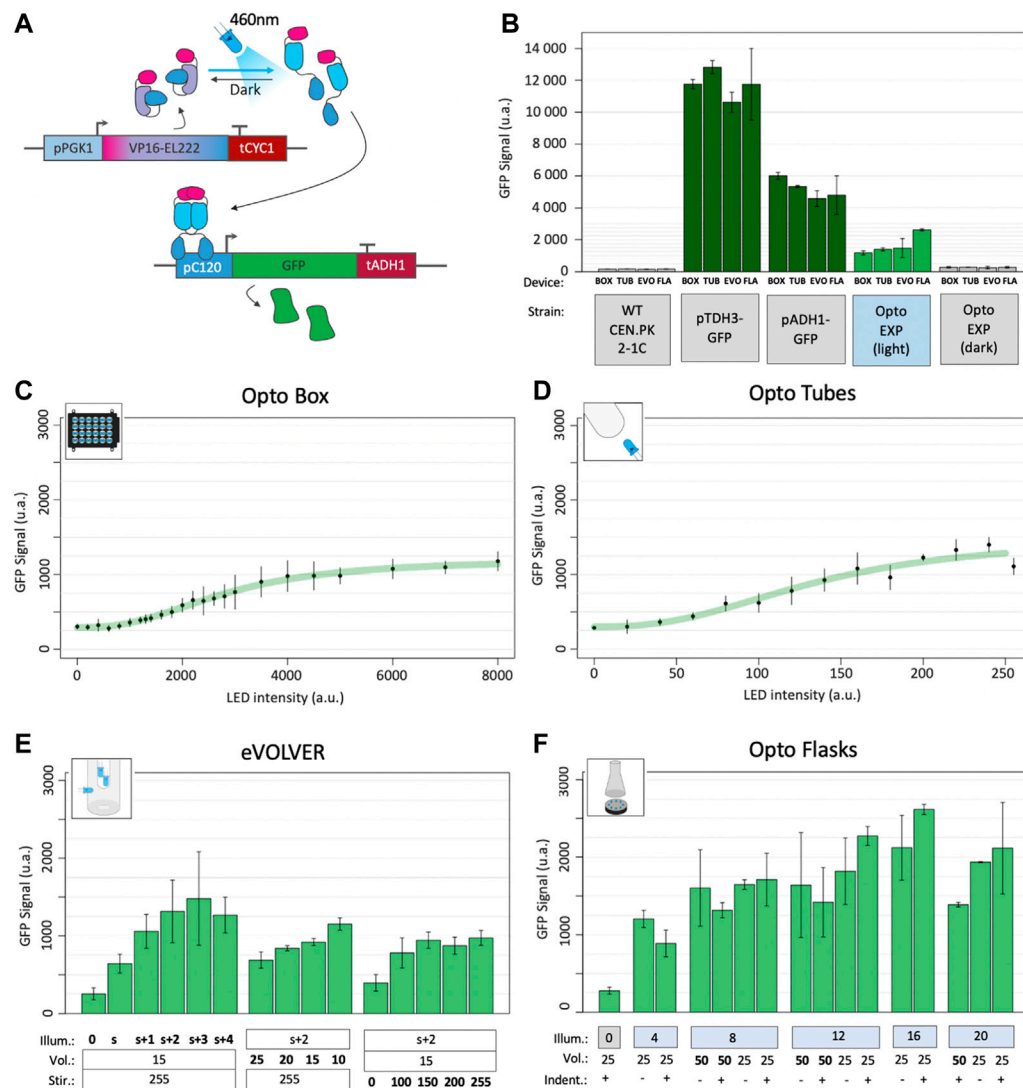


FIGURE 2

Optogenetic activation in different devices. (A) The EL222 optogenetic system responds to blue light which activates the transcription of genes under the control of the pC120 promoter (here a GFP, in the OPTO-EXP strain). Adapted from (Zhao et al., 2018). (B) Fluorescence GFP levels of the background strain CEN.PK2-1C; strains carrying GFP under the strong pTDH3 and medium pADH1 constitutive promoters; and highest levels of fluorescence reached with the OPTO-EXP strain in the light and in the dark in each the four different illumination devices (BOX: OptoBox, TUB: OptoTubes, EVO: eVOLVER, FLA: OptoFlasks). (C) OPTO-EXP optogenetic activation in the OptoBox. Cumulative LED intensities from 0 to 8000 u.a. correspond to 0–4 mW/cm² per LED. (D) OPTO-EXP optogenetic activation in the OptoTubes. LED intensities from 0 to 255 u.a. correspond to 0–12 mW/cm² (Supplementary Figure S1) (E) OPTO-EXP optogenetic activation in the eVOLVER, with variation of illumination (number of LEDs: s+2 corresponds to the side-LED and 2 additional LEDs inserted via the lid), volume (mL) and stirring (u.a., 0–255). The side-LED corresponds to 6 mW/cm², and 1, 2, 3, and 4 additional LEDs add 6.7, 8.3, 9.3 and 9.4 mW/cm² of intensity in the medium. (F) OPTO-EXP optogenetic activation in OptoFlasks. Illumination (0, 4, 8, 12, 16 or 20 LEDs on the illumination stand, 12 mW/cm² each). Volume (25 and 50 mL) and the presence of indentation in the 250 mL flask (+ is indented, - is flat) were tested. For all measures, the levels of GFP were determined using cytometry (n > 3); error bars represent the standard deviation.

For eVOLVER and the OptoFlasks, we not only varied the illumination but also the culture volume and the agitation properties, *i.e.*, the stirring speed in eVOLVER and the presence or absence of indentation (*i.e.*, baffles) in the culture flasks for the OptoFlasks system. Figure 2E shows that the additional LEDs increase activation compared to the side-LED alone and that the maximal activation is obtained with the side-LED and two to three additional LEDs (s+2 and s+3), reaching about 1,190 a.u. Volume also has an impact on optogenetic activation: using a 10 mL culture, activation corresponds to 990 a.u., but only 526 a.u. for 25 mL. Here, reducing the volume 2.5 times yields a 1.9-fold increase in

fluorescence. Moreover, in eVOLVER, stirring also proved significant: no stirring leads to an activation of 233 a.u., and low and high stirring (100–255 – Arduino PWM values) lead to activation of 730 a.u., corresponding to a 3.1-fold increase. Interestingly, the absence of the stirring appears detrimental to optogenetic activation, while any other stirring value restores the activation level: there, cells do not simply sit at the bottom of the glass vial.

We reached up to 2,453 a.u. in the OptoFlasks (Figure 2F), the highest optogenetic activation of the four devices. Although the impact of the tested volumes (50 and 25 mL) does not appear significant,

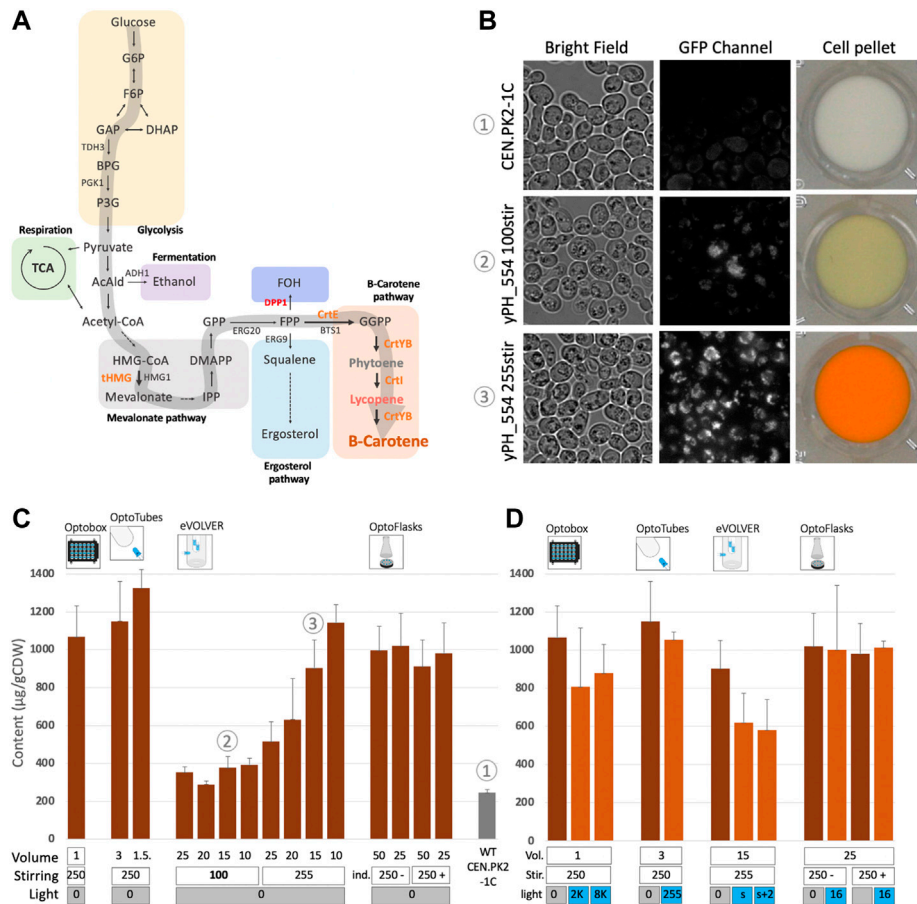


FIGURE 3

Constitutive beta-carotene production and analysis of the effect of light on beta-carotene accumulation in yeast. **(A)** Beta-carotene pathway. Arrows point to chemical species (see [Supplementary Figure S8](#) for more details), genes names are indicated in capital letters beside arrows. The large grey arrow represents the carbon flux leading to beta-carotene production. Orange: heterologous genes inserted under constitutive promoters. Red: endogenous gene deletion. **(B)** Microscopic observations and corresponding cell pellets. CEN.PK2-1C (top) strain and constitutive beta-carotene production (yPH_554—middle and bottom). Growth in YPD at 30°C for 24 h with low stirring (100—middle) versus high stirring (255—bottom). Bright field images and GFP images showing beta-carotene localized in lipid droplets and emitting in the GFP channel (100X objective). See also [Supplementary Figure S5](#). **(C)** Constitutive beta-carotene production (content—μg beta-carotene/g cell dry weight) measured after growth in the different devices (see Methods). Volume (mL), stirring/shaking (rpm except for eVOLVER, which is given in arbitrary units, + and - in OptoFlasks represent the presence or absence of indentation, respectively). In this panel, all experiments were performed in the dark (non-optogenetic strain). The WT non-producer strain is CEN.PK2-1C. Sample numbers indicated in circled numbers in **(C)** match images in **(B)**. **(D)** Effect of light on constitutive beta-carotene production in the different devices. Dark-orange bars are cultures kept in the dark, light-orange bars are illuminated cultures. Volume (mL), stirring (rpm or u.a. and indentation presence) are the same as in **(C)** and light (u.a.) as in [Supplementary Figure S2](#).

activation in 25 mL cultures seems to respond more to higher illumination. In general, maximal activation is reached above eight LEDs (12 mW/cm² per LED). Using flat or indented flasks did not yield any significant difference in activation.

In general, while the OptoBox, OptoTubes and eVOLVER reach similar maximal activation values of 1,015 a.u., activation in OptoFlasks reached an average of 1,652 a.u., 1.63-fold higher ([Figure 2B](#)), suggesting that the optogenetic activation in the three first devices has potential for improvement. Compared to the basal optogenetic expression in the dark (110 a.u. - leaking), optogenetic activation yielded a 13.7-fold increase in GFP fluorescence. In most of the devices, the optimal activation levels (1,505) corresponds to 30% of the pADH1 (5,021) and 13% of the pTDH3 promoter activity (11,578 a.u.).

Beta-carotene production is impacted at different scales

Before investigating the efficiency of the optogenetic control of beta-carotene production, we carefully characterized and optimized constitutive beta-carotene production under different culture conditions and across scales. For these experiments, the strain yPH_554, in which the beta-carotene pathway is placed under constitutive expression (no optogenetic control), was assayed in the different devices. Culture volume, stirring and light-side-effects have been quantified.

The synthesis of beta-carotene relies on the isoprenoid/mevalonate metabolic pathway. First, acetyl-CoA is channeled towards mevalonate production, then to production of IPP and

DMAPP, which are precursors to many other high value-added molecules (Clomburg et al., 2019). Condensation of IPP and DMAPP produces geranyl-pyrophosphate (GPP) and the addition of a second IPP molecule gives farnesyl-pyrophosphate (FPP). FPP can be converted to either farnesol (FOH) *via* DPP1p; two FPP molecules can condensate to form squalene *via* ERG9p (the pathway for synthesis of ergosterol and other sterols, essential for cell membranes) or *via* the addition of another IPP molecule to GGPP, the precursor of the beta-carotene pathway (Figure 3A). To increase GGPP synthesis by yPH_554, the enzymes tHMG1 and CrtE were placed under control of the strong constitutive promoters (pPGK1 and pTDH3 respectively) at the DPP1 locus, while the DPP1 gene was knocked out. Thus, the conversion of acetyl-CoA to mevalonate is increased and the conversion of FPP to FOH is prevented, favoring GGPP production. GGPP can then be converted to phytoene (uncolored) by the bi-functional CrtYB enzyme, and subsequently converted to lycopene (red pigment) by CrtI and finally into beta-carotene by CrtYB again. In yPH_554, the genes encoding the CrtYB and CrtI enzymes are inserted at the *ho* locus and both under the strong constitutive promoter pTDH3 (see Methods for more details). This design is based on (Rabeharindranto et al., 2019), which originated from (Verwaal et al., 2007).

yPH_554 cell pellets appear orange, and cells observed under fluorescence microscopy display numerous fluorescent foci, which are likely to be lipid droplets (Jing et al., 2021; Zhao Y. et al., 2021) enriched in beta-carotene (Figure 3B). In fact, these droplets that emit in the GFP channel are orange when observed using a color camera (Supplementary Figure S5). A time course of production was carried out to compare production in the different devices: we found that no more beta-carotene was produced after 24 h of culture (Supplementary Figure S6). Thus, we standardized our protocol such that cultures are launched at OD₆₀₀ 0.05 and left to grow and produce for 24 h in YPD at 30°C in batches before extraction in dodecane and quantification of beta-carotene *via* spectrophotometric analysis (based on Reyes and Kao, 2018, see Methods).

The effect of culture volume varied across devices (Figure 3C). In the OptoTubes, reducing the culture volume from 3 mL to 1.5 mL yielded a 16% increase in the beta-carotene content, from 1,150 to 1,330 µg/gCDW (Cell Dry Weight), respectively. Similarly, decreasing the volume in eVOLVER from 25 mL to 10 mL also improved production by 2.2-fold from 515 to 1,145 µg/gCDW, respectively. However, this increase was not observed at low stirring, meaning that the limiting factor is probably a combination of low stirring and volume, hence indicating probable differences in aeration between the conditions. At low stirring in eVOLVER (corresponding to the Digital PWM value of 100 sent by the Arduino; the maximum being 255), production is strongly impaired, resulting in an average of 355 µg/gCDW (3.2 times less than the maximum, Figure 3C) and a faintly yellow cell pellet (Figure 3B). In the OptoFlasks, neither the culture volume (50 and 25 mL) nor the presence of indentation in the flasks appeared to affect production. All OptoFlasks conditions yielded slightly less beta-carotene (about 1,000 µg/gCDW) than all other devices under their respective optimal conditions.

Beta-carotene is sensitive to blue light: its peak absorption wavelength is about 450 nm (Scita, 1992; Pénicaud et al., 2011) and the blue LEDs used to activate the EL222 optogenetic system peak at 461 nm (see Methods). In plants, beta-carotene is even considered to function as a protective molecule against excessive illumination, given

its photo-oxidative properties (Telfer et al., 1991). Therefore, there might be some incompatibility between the blue light-activated optogenetic system and the molecule we wish to produce. Thus, we investigated the impact of blue light on constitutive beta-carotene production (*i.e.*, no optogenetic activation) across devices with the illumination conditions used to activate the optogenetic system. As shown in Figure 3D, in the OptoTubes and OptoFlasks, strong illumination does not impact beta-carotene production. However, strong illumination impacted production in the OptoBox and in eVOLVER, resulting in a drop from 1,070 to 845 µg/gCDW (21%) in OptoBox and from 905 to 705 µg/gCDW (22%) in eVOLVER; this effect does not appear to be light dose dependent. It is important to bear these results in mind when interpreting the forthcoming results of the experiments combining optogenetics and beta-carotene production.

In conclusion, we optimized the culture conditions such that the constitutive level of beta-carotene production varied only moderately across devices, ranging from 1,000 to 1,200 µg/gCDW. The culture conditions were especially improved in the eVOLVER and we showed that culture volume and stirring impacted the production the most. Moreover, beta-carotene production and/or accumulation was impacted by illumination in OptoBox and eVOLVER.

Optogenetic control of beta-carotene production in different devices

In the two previous parts, to assess the influence of illumination, volume and stirring across devices, we used two different strains: the OPTO-EXP strain, in which GFP transcription is controlled by the EL222 optogenetic system *via* its pC120 promoter; and the constitutive beta-carotene producer strain yPH_554, which expresses all four carotenogenic genes under strong constitutive promoters.

Now, we combine these genetic systems into the strain yPH_551, in which the EL222 optogenetic system controls beta-carotene production. tHMG, CrtE, and CrtI were inserted into OPTO-EXP under the control of the constitutive promoters, similarly to the genetic design of yPH_554. However, CrtYB, which recapitulates two enzymatic reactions necessary to produce beta-carotene, was placed under the control of the pC120 optogenetic promoter (see Methods). Thus, in strain yPH_551, the expression of CrtYB acts as a light-activated valve for beta-carotene production (Figure 4A).

Figure 4B shows that beta-carotene production by strain yPH_551 was indeed successfully made light-dependent. The average production of 215 µg/g CDW in the dark corresponds to no production of beta-carotene (as confirmed by white cell pellets – see Figure 3C), *i.e.*, this value is our detection threshold (see Methods).

In the OptoBox and OptoFlasks, optogenetically controlled beta-carotene production saturates at 550 and 610 µg/gCDW respectively. In the OptoTubes and eVOLVER, production increases with the amount of light, to reach a maximum of 780 µg/gCDW in the OptoTubes and 880 in the eVOLVER. The maximal optogenetically-controlled production values in each device were lower than their respective maximal values achieved using the constitutive pTDH3 promoter, as shown in Figure 3C (52%, 68%, 79%, 62%—for OptoBox, OptoTubes, eVOLVER and OptoFlasks, respectively). Comparatively, maximal GFP levels

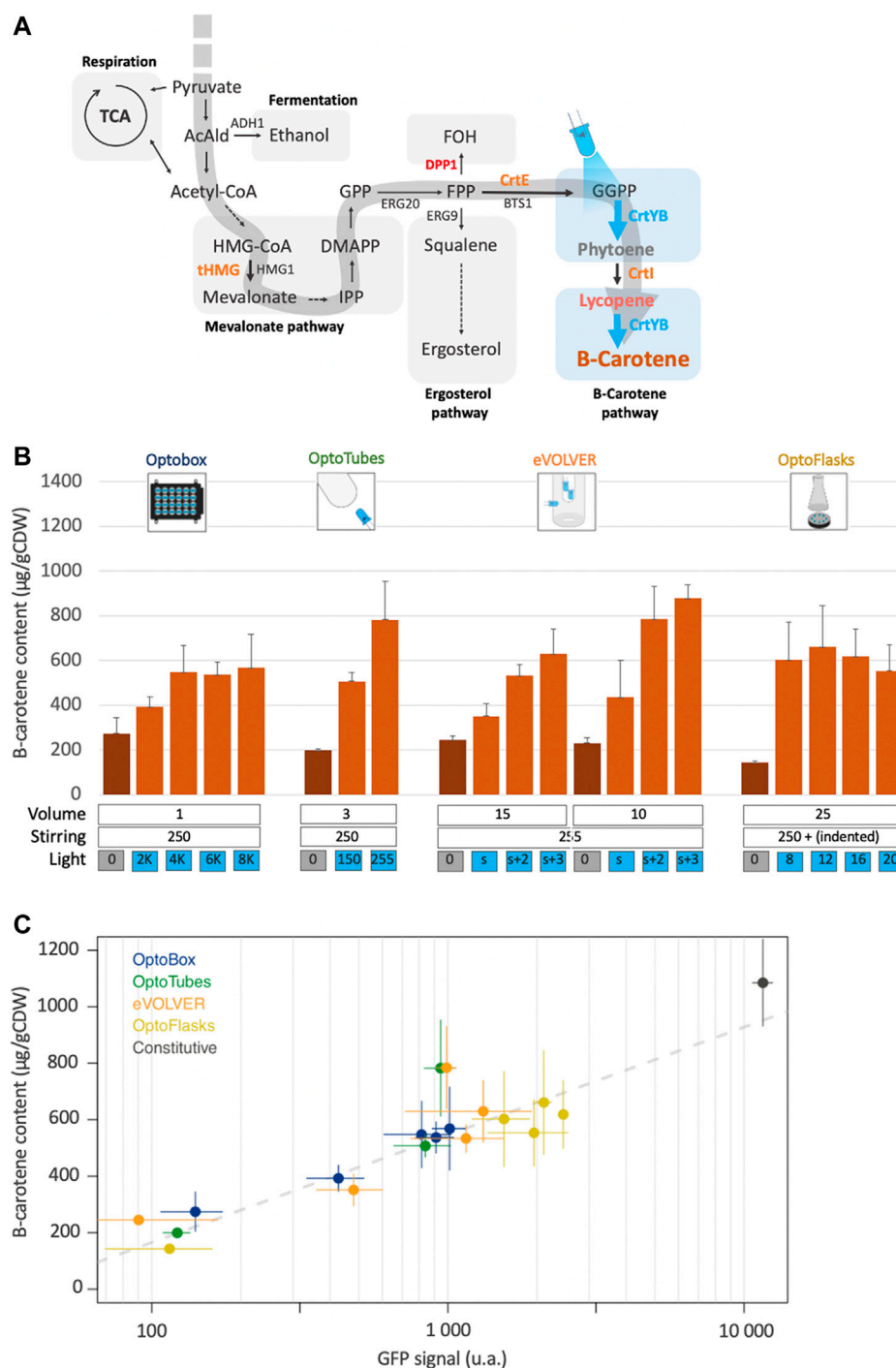


FIGURE 4

Light-activated beta-carotene production. (A) Design leading to light controlled beta-carotene production: in the optogenetic strain, only CrtYB is under the control of the pC120 promoter (yPH_551). Blue arrows represent light-induced enzymatic reactions. Orange: heterologous carotenogenic genes inserted under constitutive promoters. Red: deleted endogenous genes. Blue: optogenetically controlled reaction. (B) Beta-carotene production quantification from the different devices. Dark-orange bars correspond to cultures in the dark, light-orange bars correspond to illuminated cultures. Volumes (mL), stirring (rpm except u.a. for eVOLVER) and illumination (u.a.) are indicated ($n > 3$). (C) Light-activated beta-carotene production (Figure 4B) versus corresponding optogenetic activation (from Figures 2C–F—note the \log_{10} scale) in the different devices. Grey dashes represent the linear regression fit (adjusted $R^2 = 0.81$). The black point represents the pTDH3 promoter GFP signal and production by the constitutive beta-carotene production strain (yPH_554—Figure 3C). Error bars are standard deviations.

obtained using optogenetics reached a maximum of about 11% of pTDH3 constitutive promoter (Figure 2B). If we extrapolate this expression level to the CrtYB enzyme, this means that 50%–80% of

constitutive beta-carotene production is obtained with 11% of pTDH3 (Figure 4C), which reveals dose dependent effects and shows that light induction is efficient, despite the detrimental

effects of light on beta-carotene production in the OptoTubes and eVOLVER (Figure 3D).

For most of the conditions tested here, the light-induced production can be related to the previously measured amount of optogenetic activation (Figure 4C), such that conditions yielding more optogenetic activation result in higher beta-carotene production. Here, the production is proportional to the \log_{10} of the optogenetic activation value. The consequence of this relationship is that only about 8% of the strength of the pTDH3 promoter is required to reach 50% of the possible beta-carotene production. In other words, even though the Opto-EXP optogenetic system has comparatively low transcriptional strength, in our case, this system produces a good amount of beta-carotene compared to production from a strong constitutive promoter, perhaps because the controlled enzyme, CrtYB, does not conduct the rate-limiting step of the pathway (Verwaal et al., 2007). Finally, the outliers in Figure 4C suggest that culture conditions could probably be further improved to increase production even more.

Discussion

To test the scalability of the use of optogenetic to control bioproduction and identify its challenges, we built four illumination devices at different lab scales. These devices mainly vary with respect to the culture volumes they hold (from 1 to 50 mL); in their geometry, which impacts shaking and illumination; and in their illumination modalities, which impacts cells exposure to light. Each optogenetic device corresponds to a standard lab-scale culture device, and alternative designs exist for each device and purpose: screen straining in imaging plates like the OptoBox (Heo et al., 2015; Gerhardt et al., 2016; Bugaj and Lim, 2019; Repina et al., 2020), illumination of starter cultures in OptoTubes (Olson et al., 2014), monitoring multiple culture parameters in minibioreactors such as eVOLVER (Wang and Yang, 2017; Wong et al., 2018; Steel et al., 2020), or use of larger culture volumes for various purposes in OptoFlasks (Nedbal et al., 2020). Measuring the intensities of the LEDs allows us to compare the relative amounts of input light across these devices. However, due to the unique geometry of each device (position of the LEDs, light absorption, diffraction, and reflection) and their different culture volumes (light penetration), it remains difficult to precisely estimate the actual quantity of light received by each cell; thus, testing the activation of a reporter gene like GFP remains the best way to take these technical aspects into consideration in combination with potential biological limitations.

We concluded that optogenetic activation reached an average maximum of 13% of the pTDH3 promoter across devices. Estimations of the quantity of light per milliliter of culture revealed that between 1 and 4 mW/cm²/mL was sufficient for maximal activation in the different devices. The variations across devices indicate that other factors impact optogenetic activation in addition to the amount of light, even though measuring the effective amount of light entering and staying in the media remains difficult. Light distribution has been actively studied using single-particle and fluid dynamics models to optimize illumination of photobioreactors (mostly cultures of photosynthetic microorganisms) and predict the amount of light received by each cell over time (Pires et al., 2017; Loomba et al., 2018); and microbial optogenetics could indeed profit from such approaches.

In eVOLVER, the volume and stirring parameters strongly impacted optogenetic activation. Indeed, reducing the volume from 25 to 10 mL with maximum stirring and s+2 illumination improved activation by almost 2-fold. Furthermore, a lack of stirring resulted in a 3-fold decrease in activation, while it remained constant between low (100) and strong (255) stirring. One can interpret these results from two points of view: in terms of gas exchange in the medium and in terms of light availability. On one hand, a decrease in volume will increase the surface-to-volume ratio in the vial and improve gas exchange, and more specifically the oxygen transfer rate (OTR), a crucial element taken into consideration in bioreactors. Similarly, increasing the stirring will create a bigger vortex, resulting in comparable effects. Since only the absence of stirring (and not an increase in stirring) impacts activation, we suggest that the limitation of the OTR may be relatively low in this case, justified by the fact that the cultures measured in our experiments were only 6 h old. On the other hand, these effects may relate to the amount of light received per cell. For a set amount of light, a lower culture volume (lower cell number) could result in a higher amount of light per cell. Moreover, in eVOLVER, a high volume (25 mL) implies that some parts of the culture volume (and therefore, cells) are lying above the LEDs (*i.e.*, the poorly illuminated area—Figure 1C) and a higher volume also leads to lower light penetration; both of these factors result in a decrease in the amount of light per milliliter. In addition, in the absence of stirring, the cells lie still on the bottom of the glass vial and remain far from the light sources due to the position of the LEDs, which are placed at the top and on the side in eVOLVER. These results emphasize the importance of the illumination design within each of the different devices, which may not necessarily be well-suited for larger culture volumes.

Using our genetic design, constitutive beta-carotene production achieved a content of 1,000–1,300 µg/gCDW in the different devices. Beta-carotene production was sensitive to the culture volume and stirring. Reducing stirring in eVOLVER resulted in a 3-fold drop in production and increasing the volume to 25 mL led to a 2-fold drop (compared to production at 255 stirring of 10 mL). Culture volume also had an effect in the OptoTubes, but not in the OptoFlasks. This highlights the need to optimize the culture conditions of every device to obtain a functional strain in each and across scales. Since both higher stirring and lower volume impact beta-carotene production, we suggest that improved gas-exchange favors beta-carotene production by impacting cellular metabolism. At a sufficient concentration of oxygen (which is constrained by gas-exchange), *S. cerevisiae*, a Crabtree-positive species, undergoes both fermentation and also respiration (Pfeiffer and Morley, 2014), which consequently increases the acetyl-CoA pool directed to the Krebs cycle as well as other precursors to beta-carotene. Besides, since beta-carotene is known to be sensitive to light, we tested the impact of the blue light used for optogenetic activation in the constitutive beta-carotene producing strain. We showed that light generated about 20% drop in beta-carotene production in the OptoBox and eVOLVER only. It remains unclear why this effect is device dependent, but we may suggest that those two devices reflect light back into the culture medium. One can start to appreciate that the use of light needed for the optogenetic system may conflict with components of the cell, and here even with our produced compound.

The effects of volume and stirring on our two different genetic components were found to overlap: more stirring and a lower volume improved both optogenetic activation (for optimal illumination reasons) and beta-carotene production (for metabolic reasons), making those two genetic components easily compatible. This compatibility may not always be consistent for every system; hence, it is crucial to anticipate and evaluate these effects independently before combining optogenetic control with the pathway of interest.

We saw that the constraints of the optogenetic system and the beta-carotene pathway in each device are recapitulated in the optogenetic beta-carotene strain: in general, more light resulted in more production, and a smaller volume in eVOLVER favored the light-activated production. Light-activated production levels reached 50%–80% of those from constitutive production. Based on optogenetic activation reported by GFP, we extrapolated CrtYB levels (although qPCR analyses could give more precise estimations), and we saw that production was proportional to the \log_{10} of the expression of the enzyme. The fact that CrtYB activity is not considered rate-limiting could explain this relationship. Thus, increasing CrtYB level beyond a certain point may only slightly increase beta-carotene production, which in turns explains why the relatively lower transcriptional strength of the pC120 optogenetic promoter led to relatively high beta-carotene levels, although lower compared to the pTDH3-controlled constitutive producer strain. Controlling another enzyme of the pathway using optogenetics, like the rate-limiting CrtI or tHMG (Verwaal et al., 2007) would lead to other optogenetic-activation/beta-carotene production relationships, likely making production more sensitive to the low protein levels reached using optogenetics. This could be solved by adding more copies of the optogenetically-controlled enzyme or by using a different (Zhao et al., 2018) or more recent and stronger optogenetic system (Benzinger and Khammash, 2018; Zhao et al., 2020; Zhao E. M. et al., 2021).

Besides, although we found that more activation (optogenetic or constitutive) yielded more beta-carotene production, this straightforward profile may not always stand (Aw and Polizzi, 2013; Looser et al., 2014). Indeed, relative enzymatic levels can have an impact on the production of different metabolites (and this has even been demonstrated for beta-carotene production (Rabeharindranto et al., 2019; López et al., 2020)). Therefore, fine-tuning the optimal enzyme concentration with optogenetics could result in higher yields in different designs and for different metabolic pathways. More importantly, if higher expression yields more production, it can also lead to a higher burden and impact growth and strain stability, and therefore impact the production titers. Using optogenetics could enable precise control over the levels of enzymes using dynamic control based on feedback from the expression levels and growth rate (Pouzet et al., 2020).

Optogenetics also allows for precise control of gene expression in terms of timing. Here, we activated the cells constantly during a 24 h culture. Nevertheless, other studies have indicated that starting the illumination at later phases of growth or using pulsed patterns of illumination can improve production: (Zhao et al., 2021) distinguished the growth, induction and production phases and differently optimized the illumination patterns to produce specific chemicals and (Raghavan et al., 2020) defined the optimal illumination onsets to start the production.

This question of timing can be especially important when the production of the chemical of interest creates a burden on the cell and therefore slows down growth and/or creates a stress. In our study, beta-carotene production did not appear to produce a burden (Supplementary Figure S7); however, if this were the case, the ease of timing optimization and control using optogenetics could allow for improved titer (g/L of culture) and yield (g/g of carbon source), not only content (g/gCDW—shown in this study). To further reduce this burden, dynamic control of bioproduction could be employed to let the cells recover from the production stress and then resume production with a renewed high productivity (Pouzet et al., 2020).

Scaling-up optogenetics to industrial culture volumes will generate different constraints on optogenetic activation and yeast metabolism. In our case, the four optogenetic devices presented here are lab-scale culture devices, and with those, small volumes tended to yield better production results. We suggested two explanations: for optogenetics, a small volume is easier to illuminate more, and better to expose all cells to light sources. In terms of metabolism, adequate gas exchange appears important for beta-carotene production, and favored by low volume and stirring. Both aspects will have to be addressed at larger scales: bringing light into large metallic bioreactors, with various internal and external illumination strategies are being discussed (Pouzet et al., 2020), we have shown that this can and has to be optimized for every device. Besides, at larger scales, bioreactors often have better control over culture parameters than lab-scale devices (pH, dissolved O_2 and CO_2 , temperature), such that limitations in terms of aeration might be better dealt with. Other papers have already demonstrated optogenetic control of bioproduction in up to 5 L bioreactors (Zhao et al., 2021) and we look forward to seeing how optogenetics can be scaled-up to industrial settings.

Conclusion

We suggest a three-step approach to apply optogenetics to bioproduction control: characterize and optimize each of the optogenetic and the bioproduction components independently, before combining them. Indeed, optogenetic activation can vary across devices and the production behavior of a strain can be significantly affected by seemingly minor differences in culture conditions. Overall, this approach can help to reveal incompatibilities between the genetic components and eliminate optogenetic-dependent or pathway-dependent confounding factors.

While optogenetic systems are becoming better and illumination devices more widespread, the use of optogenetics to control microbial systems and its application to bioproduction is still a biotechnology in its infancy. Scalability remains a technical challenge and this study sets the stage for every step of the strain development process at the lab scale. Coming up next will be small and larger bioreactors before industrial scales. The promises of optogenetics for bioproduction lie in the controllability it offers to achieve more robust bioprocesses and apply real-time dynamic control of growth *versus* production, wherein lies an important resource allocation trade-off, with the overall goal of improving yields and making bioproduction an economically viable

technology for sustainable production of any type of chemical or protein for multiple industrial sectors.

Materials and methods

Construction of yeast strains

All plasmids used in this study are listed in Table 1, and *S. cerevisiae* strains used, all derived from CEN.PK2-1C, are listed in Table 2. The GFP optogenetic strain OPTO-EXP originated from (Zhao et al., 2018). Using the CEN.PK2-1C background, pPGK1-

EL222 (constitutive expression of the light-activated transcription factor) and pC120-GFP (optogenetic promoter to which EL222 binds to activate the GFP transcription) were inserted at the $\Delta his3$ locus, with a functional HIS3 copy (CgHIS3).

For constitutive beta-carotene production, constructs were made using (Rabeharindranto et al., 2019)'s DNA material in which a trifusion enzyme CrtYBekI was developed. In plasmid pHR0016, the pGal1-10 promoter was replaced with pTDH3 using the Gibson assembly (Gibson et al., 2009), to obtain plasmid pPH_386. Similarly, the bidirectional pGAL1-10 controlling the expression of CrtE and tHMG1 in plasmid pMRI34 was replaced with pPGK1-pTDH3 to build plasmid pPH_350.

TABLE 1 Plasmids used in this study.

Plasmid	Derived from	Description	Source
pHR0016	–	pGAL1-10-CrtYB(ek)I	Rabeharindranto et al. (2019)
pPH_386	pHR0016	pTDH3-CrtYB(ek)I	This study
pPH_371	pHR0016	pC120-CrtYB(ek)I	This study
pMRI34	–	CrtE-pGal1-10-tHMG1	Rabeharindranto et al. (2019)
pPH_350	pMRI34	CrtE-pTDH3-pPGK1-tHMG1	This study
YIplac211	–	pTDH3-CrtYB, pTDH3-CrtI, pTDH3-CrtE	Verwaal et al. (2007)
EZ-L83	–	pC120-GFP	Zhao et al. (2018)
pML104	–	Cas9, gRNA scaffold (URA3)	Laughery et al. (2015)
pML104-ho	pML104	gRNA targeting <i>ho</i> promoter	This study
pML104-DPP1	pML104	gRNA targeting DPP1 CDS	This study
pML104-GFP	pML104	gRNA targeting GFP CDS	This study
pML104-ek	pML104	gRNA targeting the (ek) linker	This study

TABLE 2 Strains used in this study

Yeast strain	Genotype	Source
CEN.PK2-1C	<i>MATa; ura3-52; trp1-289; leu2-3_112; his3D1; MAL2-8c; SUC2</i>	Euroscarf (ref 30000A)
yPH_545	<i>CEN.PK2-1C</i> <i>ho::pTDH3-GFP</i>	This study
yPH_550	<i>CEN.PK2-1C</i> <i>ho::pADH1-GFP</i>	This study
OPTO-EXP (YEZ139)	<i>CEN.PK2-1C</i> <i>his3D1::pPGK1-EL222-pC120-GFP (CgHIS3)</i>	Zhao et al. (2018)
yPH_463 (OPTO-EXP-mCherry)	<i>CEN.PK2-1C his3D1::pPGK1-EL222-pC120-mCherry (CgHIS3)</i>	This study
yPH_554	<i>CEN.PK2-1C</i> <i>Δho::pTDH3-CrtYB-pTDH3-CrtI</i> <i>Δdpp1::CrtE-pTDH3-pPGK1-tHMG</i>	This study
yPH_551	OPTO-EXP-mCherry (yPH_463) <i>Δho::pC120-CrtYB-pTDH3-CrtI</i> <i>Δdpp1::CrtE-pTDH3-pPGK1-tHMG</i>	This study

In strain CEN.PK2-1C, the trifusion CrtYBekI was inserted at the *ho* locus using CRISPR (Laughery et al., 2015). In brief, a gRNA targeting the *ho* locus was designed and inserted into the pML104 plasmid containing cas9, the gRNA expression cassette and the URA3 marker [pML04-*ho*, built using restriction enzyme digestion and ligation according to (Laughery et al., 2015)]. The template DNA strand was amplified from the plasmid pPH_386, containing pTDH3-CrtYBekI and two homologous arms of 90 bp targeting the *ho* locus. Upon transformation using the LiOAc Gietz method (Gietz and Schiestl, 2007), both the pML104-*ho* plasmid and the template strand were added to the mix. In brief, Cas9 will cut repeatedly at the *ho* locus and favor homologous recombination with the template DNA at this locus, which acts as selective pressure against perfect double stranded break repair. After transformation, cells were plated on Complete Synthetic Medium (CSM)-URA. Clones were isolated and screened using OneTaq DNA polymerase (NEB). The pML104-*ho* plasmid was then cured using 5-fluoroorotic acid (5-FOA) CSM. The trifusion design (Rabeharindranto et al., 2019) was broken down to the natural bifusion CrtYB and CrtI using the same CRISPR method (pML104-ek, and template from YIplac211), resulting in pTDH3-CrtYB-pTDH3-CrtI at the *ho* locus. In addition, using a gRNA targeting the *DPP1* locus (pML104-DPP1), CrtE and tHMG were inserted under the constitutive pPGK1 and pTDH3 promoters (pPH_350), both of which favor carbon flux to increase production of the GGPP precursor [at the same time, *DPP1* was deleted, which was shown to improve production (Rabeharindranto et al., 2019)].

To achieve optogenetic control of beta-carotene production (yPH_551), the background strain was OPTO-EXP-mCherry (yPH_463), in which the GFP reporter of the optoEXP system at the *HIS* locus of the OPTO-EXP strain was replaced with mCherry (using pML104-GFP) to prevent spectral overlap in microscopy (beta-carotene localizes in lipid droplets that are visible in the GFP channel and would therefore overlap with the GFP signal). The CrtYBekI trifusion was placed under the control of the pC120 optogenetic promoter in plasmid pHR0016 (amplified from the plasmid EZ-L83) using the Gibson assembly (Gibson et al., 2009). Then, the CrtYBekI trifusion was inserted at the *ho* locus in strain OPTO-EXP-mCherry (yPH_463) and broken down using CRISPR, similarly to the constitutive yPH_554 strain. In addition, as for yPH_554, CrtE-pTDH3-pPGK1-tHMG was inserted at the *dpp1* locus.

Growth conditions

All strains were grown in standard, home-made, filter-sterilized YPD [yeast extract 1% w/v (BD 212750), peptone 2% w/v (BD 211677) and D-glucose 2% w/v] at 30°C. All devices except for eVOLVER, were placed in incubators with shaking at 250 rpm and protected from ambient light. For strain selection after transformation, CSM-URA was made with Yeast Nitrogen Base (YNB) without amino acids 0.67% w/v (BD 291940), D-glucose 2% w/v, CSM dropout-URA 0.08% (MP Bio 114500022). To prepare 5-FOA medium, 50 mL/L of 1 g/L uracil solution and 0.8 g/L 5-FOA were added to CSM-URA.

Illumination devices

LED intensity

Würth Elektronik 151054BS04500 LEDs with a peak wavelength of 461 nm were used for all devices. Intensity measurements were conducted

using a power meter (TOR Labs S120C) and divided by the sensor surface (0.7088 cm²). The intensities of the LEDs depend on their connection. Optobox LEDs have a maximum intensity of 4 mW/cm² due to the resistance present in the PCB design. Similarly, in eVOLVER, the side-LED intensity is limited to 6 mW/cm² by the 82 Ω resistance. The additional LEDs in the eVOLVER and the OptoTubes LEDs are directly connected to the digital pins of an Arduino, such that their current is only dependent on the Arduino, reaching about 20 mAmp and yielding 12 mW/cm² intensity. In the OptoFlasks, the illumination stand was designed with the 20 mAmp constraint mentioned earlier; four LEDs in series was computed to reach a similar current per LED, such that their intensity was also 12 mW/cm².

OptoBox

Based on (Gerhardt et al., 2016), the OptoBox (*a.k.a.* the Light Plate Apparatus) was assembled using ordered PCBs, soldered LED-sockets, inserted blue LEDs and 3D-printed cases. LED calibration was performed using a power meter (TOR Labs S120C) and increasing illumination steps to achieve homogeneous illumination between all LEDs and wells at the same illumination intensity. Black 24-well cell imaging plates (Eppendorf 0030741005) were used to prevent light leaking between wells and sealed with aluminum foil to prevent light leakage and culture spillage and evaporation. A 25-μm film lies at bottom of the well plate to allow high gas permeability and UV-light transparency, according to the manufacturer. For an experiment, 1 mL of inoculated medium is placed into each well. A sticking aluminum sheet is used to seal the wells, and the lid is placed in top. The imaging plate is placed in the previously programmed (*via* its SD card) OptoBox, which is then connected to a 5 V power supply. The device sits in a 30°C incubator shaking at 250 rpm.

OptoTubes

LEDs are encased in a box at regular intervals (4 x 2 LEDs) and the tubes are held on top, with their bottom almost touching the LED, *via* a 3D printed holder (Supplementary Figure S2; Supplementary File S1). LEDs are directly connected to an Arduino PWM pin and were measured to result in a LED intensity of 12 mW/cm². Pictures and schemes are shown in Supplementary Figure S2. To run an experiment, 3 mL (generally) of inoculated medium is placed into a 14 mL glass test tube. The tubes are closed with a cellulose cap, placed in the OptoTubes device, and the Arduino (previously programmed with the Arduino software for the chosen light intensities) is connected to 12 V power supply. The device also sits in a 30°C incubator shaking at 250 rpm.

eVOLVER

eVOLVER was built following the instructions of (Wong et al., 2018). To launch an experiment, autoclaved vials are filled with inoculated medium and closed with a simple lid or with the custom-lid (briefly detailed below and more extensively described in Supplementary File 2). The lid is loosely placed on top of the vial, loosely screwed on, to allow for gas exchange. The vials are then placed in the aluminum sleeves (which are used for temperature control) of each eVOLVER unit. There, the additional LEDs, are placed and stacked by hand into each custom-lid. Using Node-RED software on the user interface, the culture parameters can be set (stirring, illumination from the side-LED, temperature), measure cycles modified, and names and notes added for each unit independently.

The lid of the glass vial used in eVOLVER is a hollow cap, normally closed with a removable silicone septum. To improve illumination, the cap was modified to accommodate insertion of LEDs that reach into the medium (custom-lid). For this, autoclavable cytometry tubes (5 mL Polypropylene Round-Bottom Tubes; BD Falcon REF 352063) are held tightly inside the cap hole using a larger piece of silicon (autoclavable) tubing. Using this design, additional LEDs can be placed inside the culture vial without getting wet and while maintaining sterility (Supplementary File 2). In the intensity measurements, we distinguished the side-LED of the original eVOLVER design (6 mW/cm² - a 82 Ω resistor sets its intensity Wong et al., 2018) from the additional LEDs inserted from the top (12 mW/cm² each, independently). However, combining several additional LEDs in the custom-lid does not result in a linear increase in total intensity. Since the LEDs are stacked on top of each other in a plastic (quite opaque) cytometer tube, adding 1, 2, 3, or 4 additional LEDs was measured to correspond to adding 6.7, 8.3, 9.3 and 9.4 mW/cm² of intensity, respectively, (measured at the tip of the tube—(Supplementary Figure S1)) in the culture medium.

OptoFlask

The OptoFlask illumination stand is made by connecting standard LEDs in series of four in order to have 20 mA per LEDs (similar to the Arduino output, and recommended in the LED specs datasheet) with a 12 V input (DC power connector socket). Several series of four LEDs can be connected in derivation such that all LEDs remain at 20 mA per LED, resulting in a proportional increase in light intensity in the different illumination stands containing 4, 8, 12, 16 or 20 LEDs. To set up an experiment, 250 mL flasks (flat or indented -baffled—bottom) are filled with inoculated media and sealed with a cotton-cap, held with a thin rubber-band. The 250 mL flasks are positioned on the illumination stand, then placed in an oversized metal flask holder in a 30°C shaking incubator (250 rpm) and held in place with a metal string and lab tape. Then, the stand is connected to the 12 V power supply. See Supplementary Figure S3.

Quantification of optogenetic activation (cytometry)

To quantify the activation of the optogenetic system in the different devices under different growth and illumination conditions, the YEZ139 strain (OPTO-EXP (Zhao et al., 2018)) was streaked onto YPD from a glycerol stock and incubated at room temperature for 48 h. For the preculture, a single colony was picked from the plate and incubated overnight in the dark. The next morning, an aliquot of the preculture was inoculated into YPD to obtain a OD₆₀₀ of 0.05 (5.10e6 cells/mL) and then dispensed into the different containers for the illuminated cultures. The cultures and illumination were set for 6 h: 2 Optoboxes, 8 OptoTubes, 5 Flasks, and 16 eVOLVER units can be tested in parallel. After culture, 200 μ L of cultures were diluted in 200 μ L of PBS and the levels of GFP resulting from the optogenetic activation were quantified using a BD LSR II flow cytometer (BD Biosciences) at an excitation wavelength of 488 nm and emission wavelength of 530 nm. The acquisition settings (voltage) for fluorescence quantification were identical for all experiments. Data

were collected for 10,000 cells in each culture and analysis was performed in R using the FlowCore (Ellis et al., 2022) package.

Beta-carotene extraction and content estimation

Beta-carotene quantification was adapted from (Reyes and Kao, 2018). In brief, after inoculation of the media at OD₆₀₀ 0.05 and growth for 24 h, each yeast culture sample was diluted 1:100, the OD₆₀₀ was read and Cell Dry Weight was estimated accordingly using a calibration curve (of equivalences between spectrophotometer and actual freeze-dried weighed samples). Then, 1 mL of culture was transferred to a collection tube (MP Bio). The cells were collected by centrifugation at 11,000 \times g for 2 min, the supernatant was discarded, 250 μ L of acid-washed glass beads (Sigma 425-600 μ m—G8772) and 1 mL of dodecane were added to the cell pellet and the yeast cells were lysed using a FastPrep bead-beater (MP Bio) for five times for 1 min to ensure maximal carotenoid recovery. After cell disruption, the samples were centrifuged (11,000 \times g, 2 min) to separate cell debris and glass beads, 200 μ L of the supernatant was transferred to a 96 well plate and scanned from OD₂₀₀ to OD₇₀₀ using a Spark TECAN analyzer. The A₄₅₄ of the scan was used to estimate the beta-carotene of the dodecane solution using calibration curve prepared with hexane and beta-carotene's extinction coefficient. By comparing the determined beta-carotene concentration in the dodecane solution with the actual OD and culture volume, the content, yield and titer can be calculated. Note that *non*-beta-carotene-producing cells yield a production value of about 200 μ g/g CDW, even though the colonies will appear white, *i.e.*, this value is the limit of detection.

To view the color of the cell pellets, cultures were concentrated to OD 50 by centrifugation, 200 μ L was poured into a 96-well-plate, allowed to sit for 15 min, then the plate was color-scanned using a desktop scanner.

Microscopy

Bright field (BF) and fluorescence images were acquired with MetaMorph software from an Olympus IX83 inverted epifluorescence microscope paired with an Andor CMOS Zyla camera using an 100x objective. Samples were illuminated using a CoolLED pE4000 fluorescence lamp. An exposure time of 200 ms was used to acquire BF images. Images of GFP fluorescence were acquired using excitation and emission wavelengths of 470 and 525 nm, respectively, and an exposure time of 250 ms at 25% light intensity. To acquire images, a small volumes of culture were centrifuged and the cells were simply loaded into a custom-made PDMS chip (Llamosi et al., 2016) to obtain a monolayer of cells. The chip was then placed under the 100x objective for image acquisition.

Data availability statement

The datasets presented in this study can be found in the following Zenodo repository <https://zenodo.org/record/7265419#.Y5c9Oy2ZNQII>. Code used to carry out the experiments and more construction details

are available in the following Github repository: https://github.com/Lab513/DIY_Optogenetics further inquiries can be directed to the corresponding author.

Author contributions

SP performed all experiments and participated in all aspects of this work. JC-R contributed to the experiments related to beta-carotene production and extraction. MB, CC, AB, SB, and SC-C contributed the experiments and associated with the setup and control of the optogenetic devices. SP, TL, GT and PH designed the study and wrote the article.

Funding

JC-R postdoctoral fellowship was supported by the SECTEL. This work was supported by the European Research Council grant SmartCells (724,813) and received support from grants ANR-11-LABX-0038, ANR-10-IDEX-0001-02 and ANR-16-CE12-0025-01.

Acknowledgments

We would like to thank Doctor Jose Avalos for kindly providing us with the optogenetic strains and genetic materials. We also thank

Guillermo Nevot, William Bretts, Arnaud Grados and the mechanical workshop of the Matter and Complex Systems Lab, especially Oune-Saysavanh Souramasing, for their help with setting up the eVolver hardware.

Conflict of interest

The authors declare that the research was conducted in the absence of any commercial or financial relationships that could be construed as a potential conflict of interest.

Publisher's note

All claims expressed in this article are solely those of the authors and do not necessarily represent those of their affiliated organizations, or those of the publisher, the editors and the reviewers. Any product that may be evaluated in this article, or claim that may be made by its manufacturer, is not guaranteed or endorsed by the publisher.

Supplementary material

The Supplementary Material for this article can be found online at: <https://www.frontiersin.org/articles/10.3389/fbioe.2023.1085268/full#supplementary-material>

References

- Aw, R., and Polizzi, K. M. (2013). Can too many copies spoil the broth? *Microb. Cell Fact.* 12 (1), 128. doi:10.1186/1475-2859-12-128
- Benzing, D., and Khammash, M. (2018). Pulsatile inputs achieve tunable attenuation of gene expression variability and graded multi-gene regulation. *Nat. Commun.* 9 (1), 3521. doi:10.1038/s41467-018-05882-2
- Benzing, D., Ovinnikov, S., and Khammash, M. (2022). Synthetic gene networks recapitulate dynamic signal decoding and differential gene expression. *Cell Syst.* 13 (5), 353–364.e6. doi:10.1016/j.cels.2022.02.004
- Bogacz-Radomska, L., and Harasym, J. (2018). β -Carotene-properties and production methods. *Food Qual. Saf.* 2 (2), 69–74. doi:10.1093/fqsaf/fyy004
- Bugaj, L. J., and Lim, W. A. (2019). High-throughput multicolor optogenetics in microwell plates. *Nat. Protoc.* 14 (7), 2205–2228. doi:10.1038/s41596-019-0178-y
- Chen, R., Yang, S., Zhang, L., and Zhou, Y. J. (2020). Advanced strategies for production of natural products in yeast. *iScience* 23 (3), 100879. doi:10.1016/j.isci.2020.100879
- Clomburg, J. M., Qian, S., Tan, Z., Cheong, S., and Gonzalez, R. (2019). The isoprenoid alcohol pathway, a synthetic route for isoprenoid biosynthesis. *Proc. Natl. Acad. Sci. U. S. A.* 116 (26), 12810–12815. doi:10.1073/pnas.1821004116
- Ding, Q., Ma, D., Liu, G. Q., Li, Y., Guo, L., Gao, C., et al. (2020). Light-powered *Escherichia coli* cell division for chemical production. *Nat. Commun.* 11 (1), 2262–2314. doi:10.1038/s41467-020-16154-3
- Duplus-Bottin, H., Spichty, M., Triqueneaux, G., Place, C., Mangeot, P. E., Ohlmann, T., et al. (2021). A single-chain and fast-responding light-inducible cre recombinase as a novel optogenetic switch. *Elife* 10, 612688–e61352. doi:10.7554/eLife.61268
- Ellis, B., Haaland, P., Hahne, F., Le Meur, N., and Gopalakrishnan, N. (2022). *flowCore: Basic structures for flow cytometry data*. R Package version 280. Published online.
- Enwemeka, C. S., Baker, T. L., and Bumah, V. V. (2021). The role of UV and blue light in photo-eradication of microorganisms. *J. Photochem Photobiol.* 8, 100064. doi:10.1016/j.jpap.2021.100064
- Galanie, S., Thodey, K., Trenchard, I. J., Filsinger Interrante, M., and Smolke, C. D. (2015). Complete biosynthesis of opioids in yeast. *Science* 349 (6252), 1095–1100. doi:10.1126/science.aac9373
- Gerhardt, K. P., Olson, E. J., Castillo-Hair, S. M., Hartsough, L. A., Landry, B. P., Ekness, F., et al. (2016). An open-hardware platform for optogenetics and photobiology. *Sci. Rep.* 6, 35363–35413. doi:10.1038/srep35363
- Gibson, D. G., Young, L., Chuang, R., Venter, J. C., Hutchison, C. A., and Smith, H. O. (2009). Enzymatic assembly of DNA molecules up to several hundred kilobases. *Nat. Methods* 6 (5), 343–345. doi:10.1038/NMETH.1318
- Gietz, R. D., and Schiestl, R. H. (2007). High-efficiency yeast transformation using the LiAc/SS carrier DNA/PEG method. *Nat. Protoc.* 2 (1), 31–34. doi:10.1038/nprot.2007.13
- Grangateau, C., Lepinois, F., Winckler, P., Perrier-Cornet, J. M., Dupont, S., and Beney, L. (2018). Cell death mechanisms induced by photo-oxidation studied at the cell scale in the yeast *Saccharomyces cerevisiae*. *Front. Microbiol.* 9, 2640–2648. doi:10.3389/fmicb.2018.02640
- Hansen, N. L., Miettinen, K., Zhao, Y., Ignea, C., Andreaddi, A., Raadam, M. H., et al. (2020). Integrating pathway elucidation with yeast engineering to produce polypunonic acid the precursor of the anti-obesity agent celastrol. *Microb. Cell Fact.* 19 (1), 15–17. doi:10.1186/s12934-020-1284-9
- Heo, J., Cho, D. H., Ramanan, R., Oh, H. M., and Kim, H. S. (2015). PhotoBiobox: A tablet sized, low-cost, high throughput photobioreactor for microalgal screening and culture optimization for growth, lipid content and CO₂ sequestration. *Biochem. Eng. J.* 103, 193–197. doi:10.1016/j.bej.2015.07.013
- Jing, Y., Guo, F., Zhang, S., Dong, W., Zhou, J., Xin, F., et al. (2021). Recent advances on biological synthesis of lycopene by using industrial yeast. *Ind. Eng. Chem. Res.* 60 (9), 3485–3494. doi:10.1021/acs.iecr.0c05228
- Lalwani, M. A., Ip, S. S., Carrasco-López, C., Day, C., Zhao, E. M., Kawabe, H., et al. (2020). Optogenetic control of the lac operon for bacterial chemical and protein production. *Nat. Chem. Biol.* 17, 71–79. doi:10.1038/s41589-020-0639-1
- Lalwani, M. A., Zhao, E. M., Wegner, S. A., and Avalos, J. L. (2021a). The neurospora crassa inducible Q system enables simultaneous optogenetic amplification and inversion in *Saccharomyces cerevisiae* for bidirectional control of gene expression. *ACS Synth. Biol.* 10 (8), 2060–2075. doi:10.1021/acssynbio.1c00229
- Lalwani, M. A., Kawabe, H., Mays, R. L., Hoffman, S. M., and Avalos, J. L. (2021b). Optogenetic control of microbial consortia populations for chemical production. *ACS Synth. Biol.* 10 (8), 2015–2029. doi:10.1021/acssynbio.1c00182
- Laughery, M. F., Hunter, T., Brown, A., Hoopes, J., Ostbye, T., Shumaker, T., et al. (2015). New vectors for simple and streamlined CRISPR-Cas9 genome editing in *Saccharomyces cerevisiae*. *Yeast* 32 (12), 711–720. doi:10.1002/yea.3098
- Liu, R., Liu, L., Li, X., Liu, D., and Yuan, Y. (2020). Engineering yeast artificial core promoter with designated base motifs. *Microb. Cell Fact.* 19 (1), 38–39. doi:10.1186/s12934-020-01305-4

- Llamasi, A., Gonzalez-Vargas, A. M., Versari, C., Cinquemani, E., Ferrari-Trecate, G., Hersen, P., et al. (2016). What population reveals about individual cell identity: Single-cell parameter estimation of models of gene expression in yeast. *PLoS Comput. Biol.* 12 (2), e1004706–e1004718. doi:10.1371/journal.pcbi.1004706
- Loomba, V., Huber, G., and Von Lieres, E. (2018). Single-cell computational analysis of light harvesting in a flat-panel photo-bioreactor. *Biotechnol. Biofuels* 11 (1), 149–211. doi:10.1186/s13068-018-1147-3
- Looser, V., Bruhlmann, B., Bumbak, F., Stenger, C., Costa, M., Camattari, A., et al. (2014). Cultivation strategies to enhance productivity of *Pichia pastoris*: A review. *Biotechnol. Adv.* 33 (6), 1177–1193. doi:10.1016/j.biotechadv.2015.05.008
- López, J., Bustos, D., Camilo, C., Arenas, N., Saa, P. A., and Agosin, E. (2020). Engineering *Saccharomyces cerevisiae* for the overproduction of β -ionone and its precursor β -carotene. *Front. Bioeng. Biotechnol.* 8, 578793–578813. doi:10.3389/fbioe.2020.578793
- Martin, J. F., and Demain, A. L. (1980). Control of antibiotic biosynthesis. *Microbiol. Rev.* 44 (2), 230–251. doi:10.1128/mr.44.2.230-251.1980
- Motta-Mena, L. B., Reade, A., Mallory, M. J., Glantz, S., Weiner, O. D., Lynch, K. W., et al. (2014). An optogenetic gene expression system with rapid activation and deactivation kinetics. *Nat. Chem. Biol.* 10 (3), 196–202. doi:10.1038/nchembio.1430
- Nedbal, J., Gao, L., and Suhling, K. (2020). Bottom-illuminated orbital shaker for microalgae cultivation. *HardwareX* 8, e00143. doi:10.1016/j.ohx.2020.e00143
- Nowrouzi, B., Li, R. A., Walls, L. E., d'Espaux, L., Malci, K., Liang, L., et al. (2020). Enhanced production of taxadiene in *Saccharomyces cerevisiae*. *Microb. Cell Fact.* 19 (1), 200–212. doi:10.1186/s12934-020-01458-2
- Olson, E. J., Hartsough, L. A., Landry, B. P., Shroff, R., and Tabor, J. J. (2014). Characterizing bacterial gene circuit dynamics with optically programmed gene expression signals. *Nat. Methods* 11 (4), 449–455. doi:10.1038/nmeth.2884
- Oud, B., Van Maris, A. J. A., Daran, J. M., and Pronk, J. T. (2012). Genome-wide analytical approaches for reverse metabolic engineering of industrially relevant phenotypes in yeast. *FEMS Yeast Res.* 12 (2), 183–196. doi:10.1111/j.1567-1364.2011.00776.x
- Paddon, C. J., Westfall, P. J., Pitera, D. J., Benjamin, K., Fisher, K., McPhee, D., et al. (2013). High-level semi-synthetic production of the potent antimalarial artemisinin. *Nature* 496 (7446), 528–532. doi:10.1038/nature12051
- Pénicaud, C., Achir, N., Dhuique-Mayer, C., Dornier, M., and Bohuon, P. (2011). Degradation of β -carotene during fruit and vegetable processing or storage: Reaction mechanisms and kinetic aspects: A review. *Fruits* 66 (6), 417–440. doi:10.1051/fruits/2011058
- Pereira, F., Lopes, H., Maia, P., Meyer, B., Nocon, J., Jouhten, P., et al. (2021). Model-guided development of an evolutionarily stable yeast chassis. *Mol. Syst. Biol.* 17 (7), 102533–e10318. doi:10.15252/msb.202110253
- Pfeiffer, T., and Morley, A. (2014). An evolutionary perspective on the Crabtree effect. *Front. Mol. Biosci.* 1, 17–26. doi:10.3389/fmolb.2014.00017
- Pires, J. C. M., Alvim-Ferraz, M. C. M., and Martins, F. G. (2017). Photobioreactor design for microalgae production through computational fluid dynamics: A review. *Renew. Sustain Energy Rev.* 79, 248–254. doi:10.1016/j.rser.2017.05.064
- Pouzet, S., Banderas, A., Beclé, M., Lautier, T., Truan, G., and Hersen, P. (2020). The promise of optogenetics for bioproduction: Dynamic control strategies and scale-up instruments. *Bioengineering* 7 (4), 151–217. doi:10.3390/bioengineering7040151
- Rabeharindranto, H., Castaño-Cerezo, S., Lautier, T., Garcia-Alles, L. F., Treitz, C., Tholey, A., et al. (2019). Enzyme-fusion strategies for redirecting and improving carotenoid synthesis in *S. cerevisiae*. *Metab. Eng. Commun.* 8, 000866–e111. doi:10.1016/j.mec.2019.e00086
- Raghavan, A. R., Salim, K., and Yadav, V. G. (2020). Optogenetic control of heterologous metabolism in *E. coli*. *ACS Synth. Biol.* 9 (9), 2291–2300. doi:10.1021/acssynbio.9b00454
- Repina, N. A., McClave, T., Johnson, H. J., Bao, X., Kane, R. S., and Schaffer, D. V. (2020). Engineered illumination devices for optogenetic control of cellular signaling dynamics. *Cell Rep.* 31 (10), 107737. doi:10.1016/j.celrep.2020.107737
- Reyes, L. H., and Kao, K. C. (2018). Growth-coupled carotenoids production using adaptive laboratory evolution. *Methods Mol. Biol.* 1671, 319–330. doi:10.1007/978-1-4939-7295-1_20
- Ribeiro, B. D., Barreto, D. W., and Coelho, M. A. Z. (2011). Technological aspects of β -carotene production. *Food Bioprocess Technol.* 4 (5), 693–701. doi:10.1007/s11947-011-0545-3
- Sahu, A., Blätke, M. A., Szymański, J. J., and Töpfer, N. (2021). Advances in flux balance analysis by integrating machine learning and mechanism-based models. *Comput. Struct. Biotechnol. J.* 19, 4626–4640. doi:10.1016/j.csbj.2021.08.004
- Scita, G. (1992). The stability of β -carotene under different laboratory conditions. *J. Nutr. Biochem.* 3 (3), 124–128. doi:10.1016/0955-2863(92)90104-Q
- Senoo, S., Tandar, S. T., Kitamura, S., Toya, Y., and Shimizu, H. (2019). Light-inducible flux control of triosephosphate isomerase on glycolysis in *Escherichia coli*. *Biotechnol. Bioeng.* 116 (12), 3292–3300. doi:10.1002/bit.27148
- Shaw, W. M., Yamauchi, H., Mead, J., Gowers, G. O. F., Bell, D. J., Oling, D., et al. (2019). Engineering a model cell for rational tuning of GPCR signaling. *Cell* 177 (3), 782–796.e27. doi:10.1016/j.cell.2019.02.023
- Srinivasan, P., and Smolke, C. D. (2020). Biosynthesis of medicinal tropane alkaloids in yeast. *Nature* 585 (7826), 614–619. doi:10.1038/s41586-020-2650-9
- Steel, H., Habgood, R., Kelly, C., and Papachristodoulou, A. (2020). *In situ* characterisation and manipulation of biological systems with ChiBio. *PLOS Biol.* 18, 30007944–e3000812. doi:10.1371/journal.pbio.3000794
- Subramanian, I., Verma, S., Kumar, S., Jere, A., and Anamika, K. (2020). Multi-omics data integration, interpretation, and its application. *Bioinform. Biol. Insights* 14, 117793221989905–117793221989909. doi:10.1177/1177932219899051
- Tan, S. Z., and Prather, K. L. (2017). Dynamic pathway regulation: Recent advances and methods of construction. *Curr. Opin. Chem. Biol.* 41, 28–35. doi:10.1016/j.cbpa.2017.10.004
- Telfer, A., De Las Rivas, J., and Barber, J. (1991). β -Carotene within the isolated photosystem II reaction centre: Photooxidation and irreversible bleaching of this chromophore by oxidised P680. *BBA - Bioenerg.* 1060 (1), 106–114. doi:10.1016/S0005-2728(05)80125-2
- Verwaal, R., Wang, J., Meijnen, J. P., Visser, H., Sandmann, G., van den Berg, J. A., et al. (2007). High-level production of beta-carotene in *Saccharomyces cerevisiae* by successive transformation with carotenogenic genes from *Xanthophyllomyces dendrorhous*. *Appl. Environ. Microbiol.* 73 (13), 4342–4350. doi:10.1128/AEM.02759-06
- Wang, H., and Yang, Y. T. (2017). Mini photobioreactors for *in vivo* real-time characterization and evolutionary tuning of bacterial optogenetic circuit. *ACS Synth. Biol.* 6 (9), 1793–1796. doi:10.1021/acssynbio.7b00091
- Wong, B. G., Mancuso, C. P., Kiriakov, S., Bashor, C. J., and Khalil, A. S. (2018). Precise, automated control of conditions for high-throughput growth of yeast and bacteria with eVOLVER. *Nat. Publ. Gr* 36, 614–623. doi:10.1038/nbt.4151
- Zhao, E. M., Zhang, Y., Mehl, J., Park, H., Lalwani, M. A., Toettcher, J. E., et al. (2018). Optogenetic regulation of engineered cellular metabolism for microbial chemical production. *Nature* 555 (7698), 683–687. doi:10.1038/nature26141
- Zhao, E. M., Suek, N., Wilson, M. Z., Dine, E., Pannucci, N. L., Gitai, Z., et al. (2019). Light-based control of metabolic flux through assembly of synthetic organelles. *Nat. Chem. Biol.* 15 (6), 589–597. doi:10.1038/s41589-019-0284-8
- Zhao, E. M., Lalwani, M. A., Lovelett, R. J., García-Echauri, S. A., Hoffman, S. M., Gonzalez, C. L., et al. (2020). Design and characterization of rapid optogenetic circuits for dynamic control in yeast metabolic engineering. *ACS Synth. Biol.* 9 (12), 3254–3266. Published online. doi:10.1021/acssynbio.0c00305
- Zhao, E. M., Lalwani, M. A., Chen, J.-M., Orillac, P., Toettcher, J. E., and Avalos, J. L. (2021). Optogenetic amplification circuits for light-induced metabolic control. *ACS Synth. Biol.* 10 (5), 1143–1154. doi:10.1021/acssynbio.0c00642
- Zhao, Y., Zhang, Y., Nielsen, J., and Liu, Z. (2021). Production of β -carotene in *Saccharomyces cerevisiae* through altering yeast lipid metabolism. *Biotechnol. Bioeng.* 118 (5), 2043–2052. doi:10.1002/bit.27717