



**HAL**  
open science

## How Groundwater Models Can Benefit from Near-Surface Seismic Data ?

Agnès Rivière, Ludovic Bodet, Marine Dangeard, Ramon Sanchez Gonzalez,  
Alexandrine Gesret

► **To cite this version:**

Agnès Rivière, Ludovic Bodet, Marine Dangeard, Ramon Sanchez Gonzalez, Alexandrine Gesret.  
How Groundwater Models Can Benefit from Near-Surface Seismic Data ?. Tereno OZCAR, Sep 2023,  
Germany, France. hal-04245901

**HAL Id: hal-04245901**

**<https://hal.science/hal-04245901>**

Submitted on 17 Oct 2023

**HAL** is a multi-disciplinary open access archive for the deposit and dissemination of scientific research documents, whether they are published or not. The documents may come from teaching and research institutions in France or abroad, or from public or private research centers.

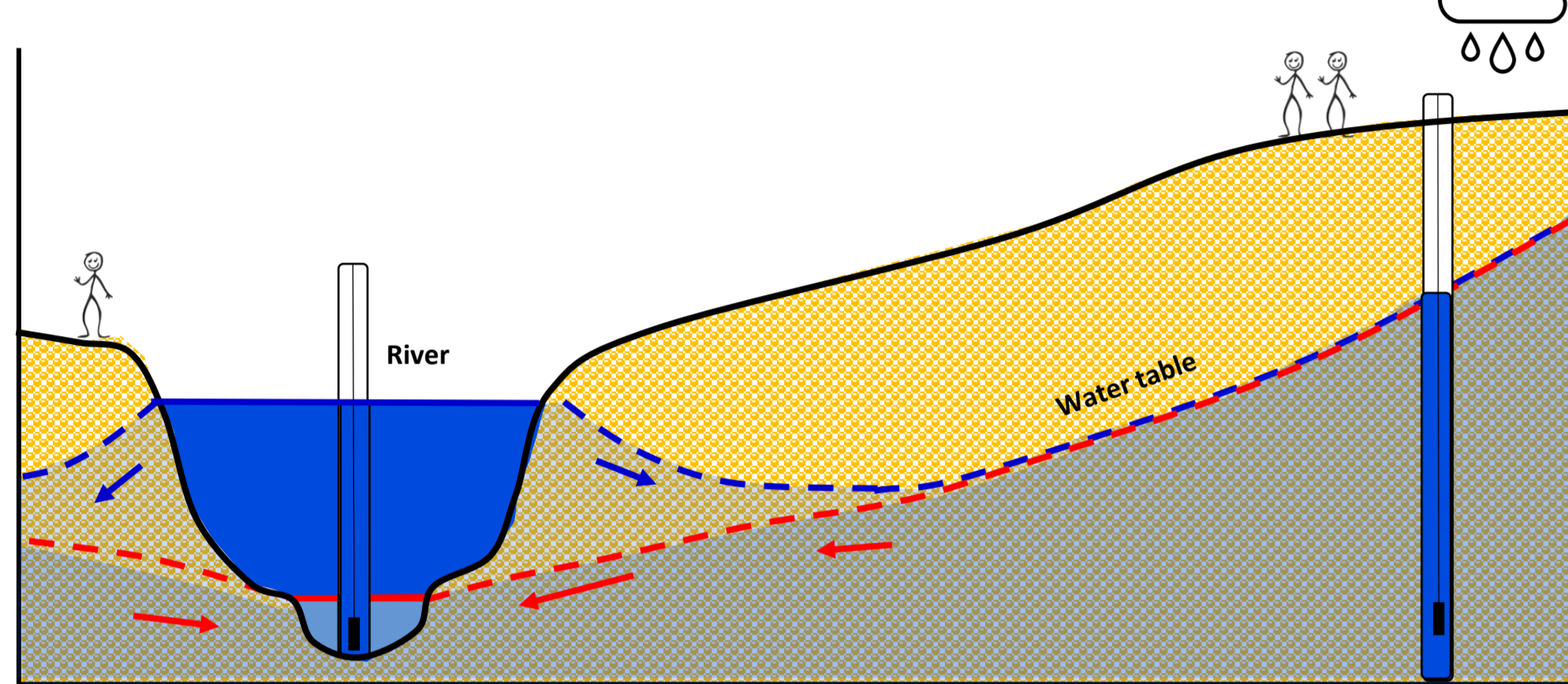
L'archive ouverte pluridisciplinaire **HAL**, est destinée au dépôt et à la diffusion de documents scientifiques de niveau recherche, publiés ou non, émanant des établissements d'enseignement et de recherche français ou étrangers, des laboratoires publics ou privés.



Distributed under a Creative Commons Attribution - NonCommercial - ShareAlike 4.0 International License

## 1. Motivations

Groundwater (GW) systems exist in dynamic balance with the climate and human pressure, connecting interfacing zones of recharge and discharge with multiple feedbacks. These interfaces are composed of various morpho-sedimentary units with highly contrasting geometries and lithologies. GW recharge and SW-GW exchanges cannot be directly measured.

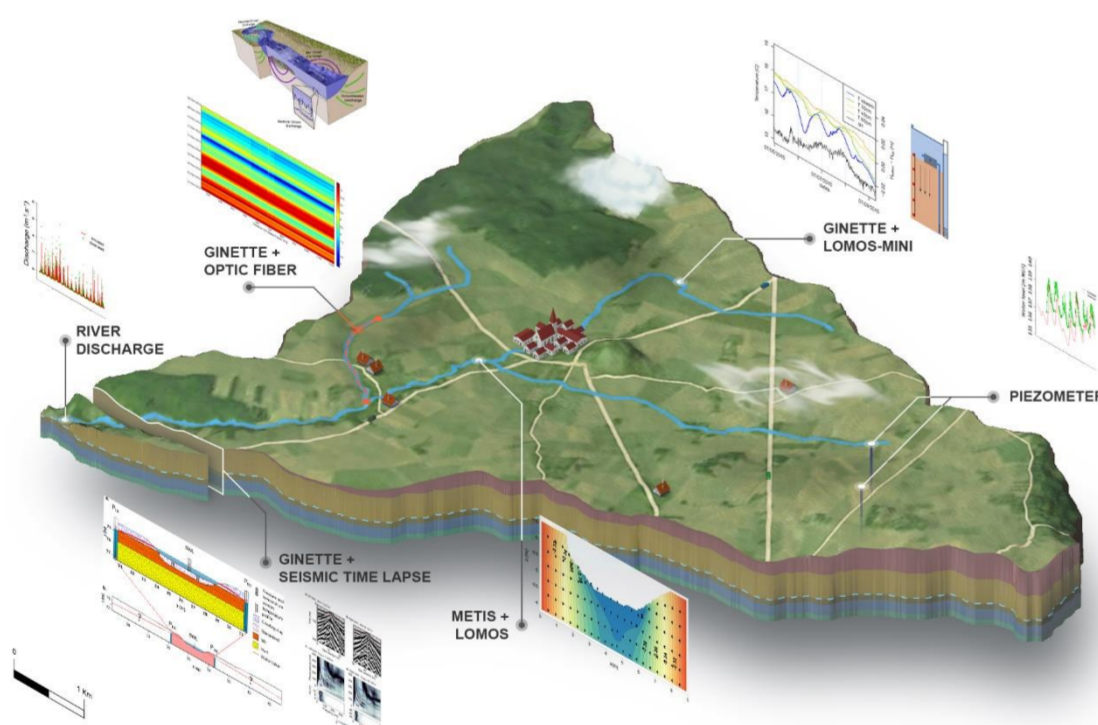


→ Quantifying Water Fluxes at Interfaces:

- Determining Hydrofacies Distribution?
- Defining Initial and Boundary Conditions?
- Calibration of Variable States?

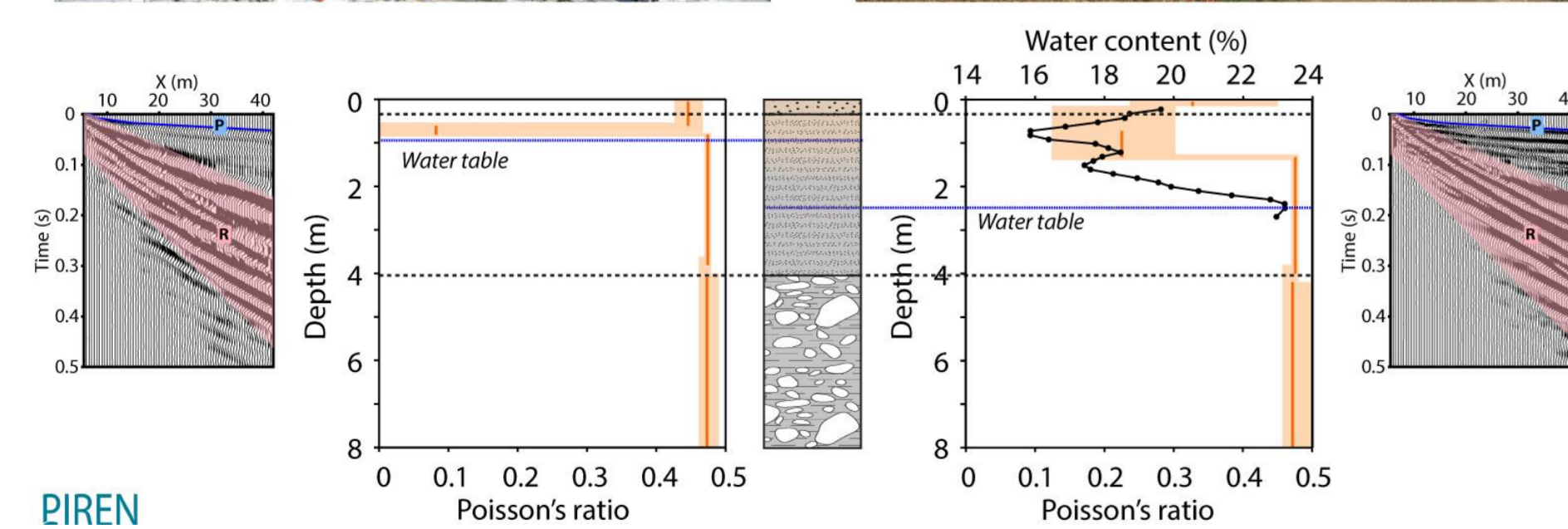
## Orgeval Critical zone observatory

- Long-term experimental observatory and research site
- Area of 46 km<sup>2</sup>
- Representative of rural areas with intensive cereal farming



## 2. Seismic data and model

Combined P-wave first arrivals and surface-wave dispersion measurements and inversion

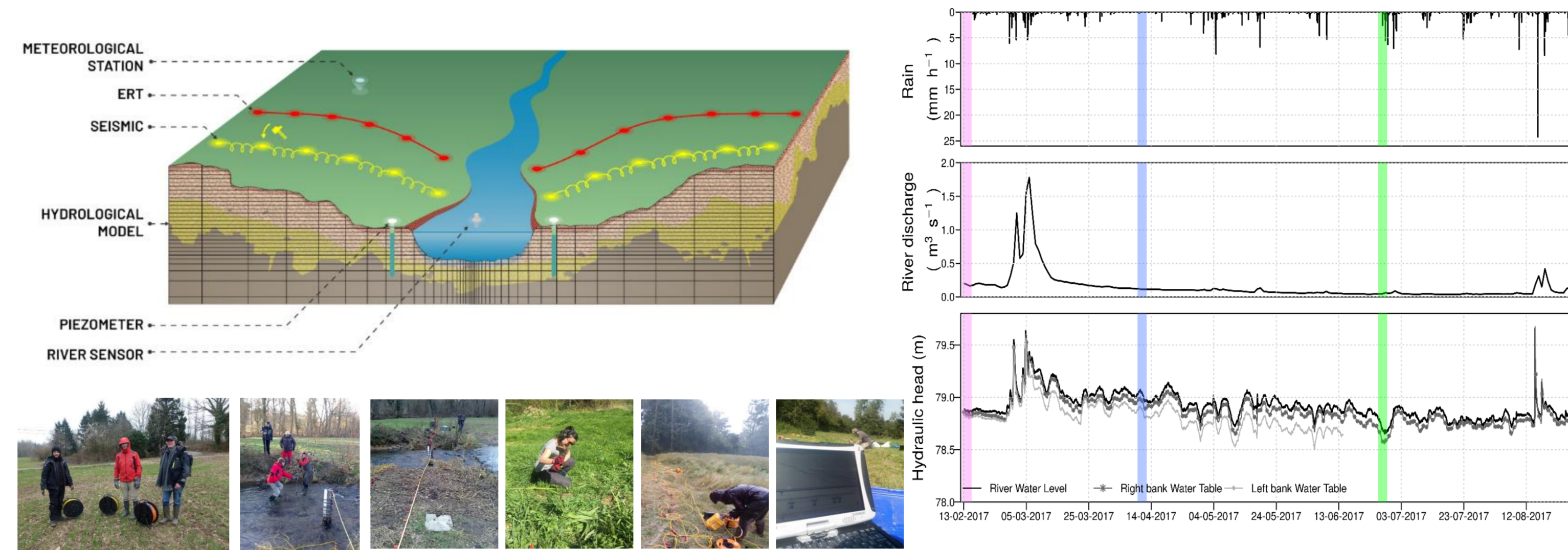


→ VP/VS or Poisson's ratio estimation = Water table depth !!  
→ related to strong water content contrasts

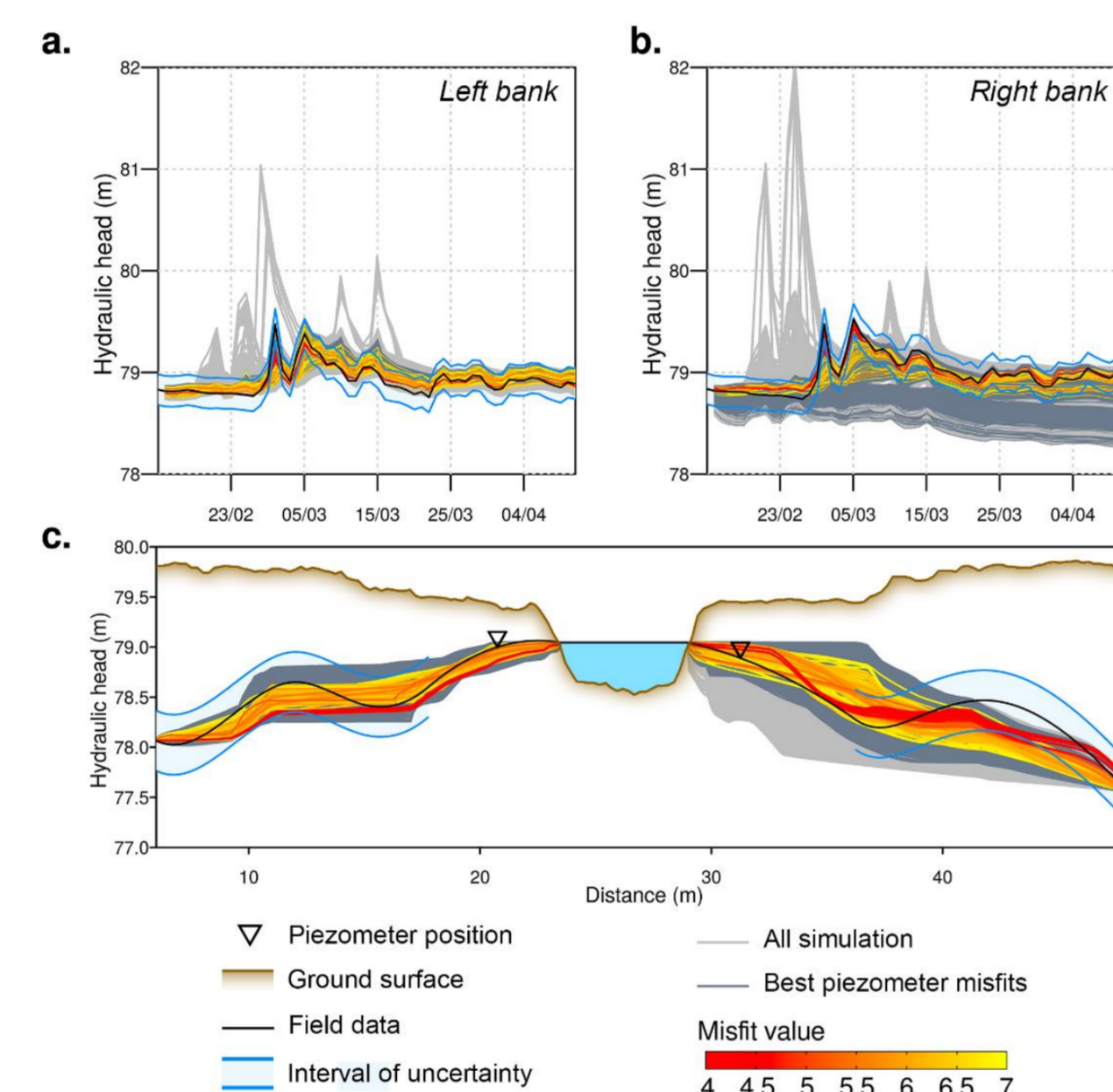
Pasque et al. (JAG 2015)

## 3. SW-GW exchanges: Dangeard et al. 2021 (WRR)

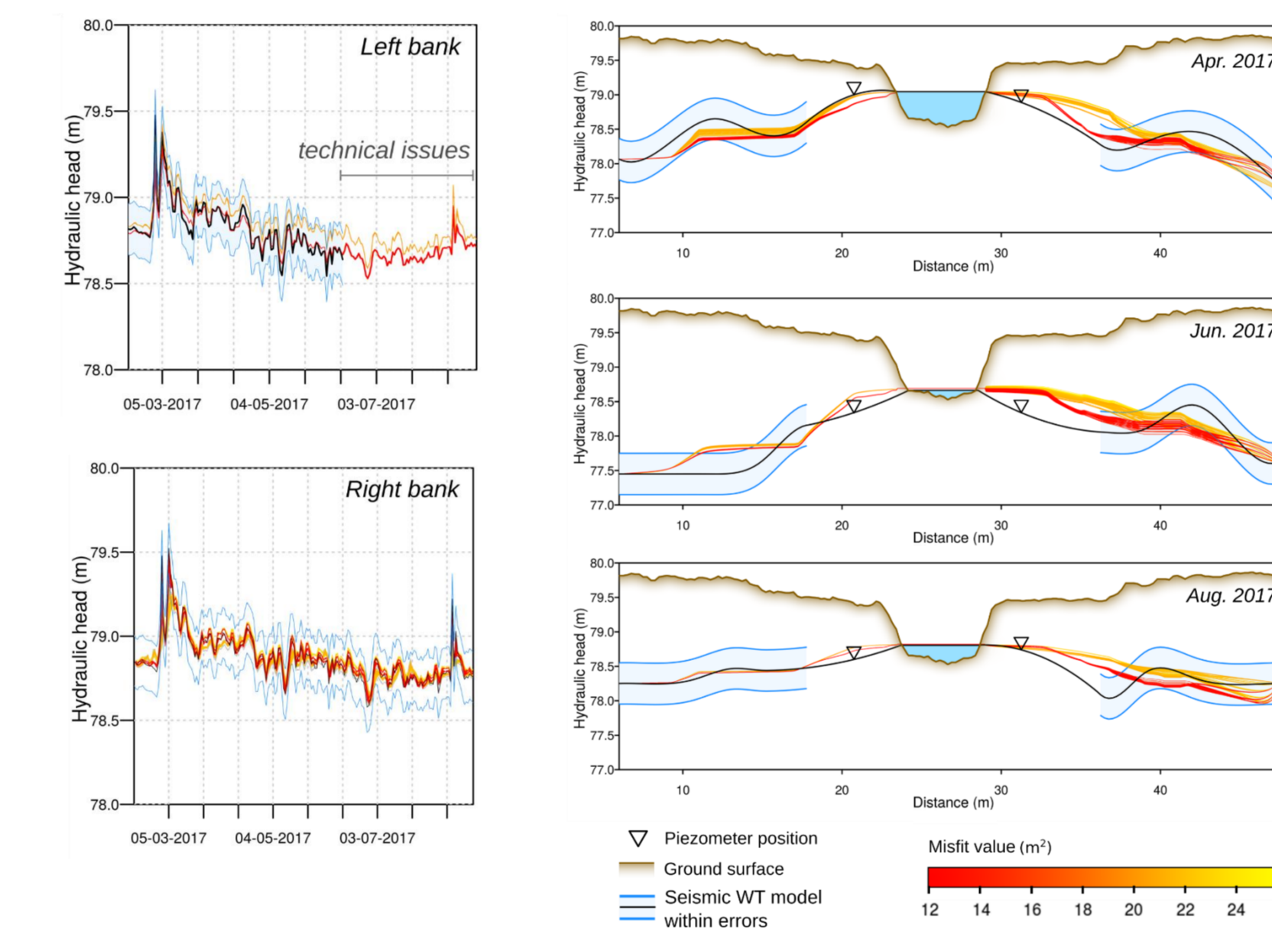
→ a. Field works



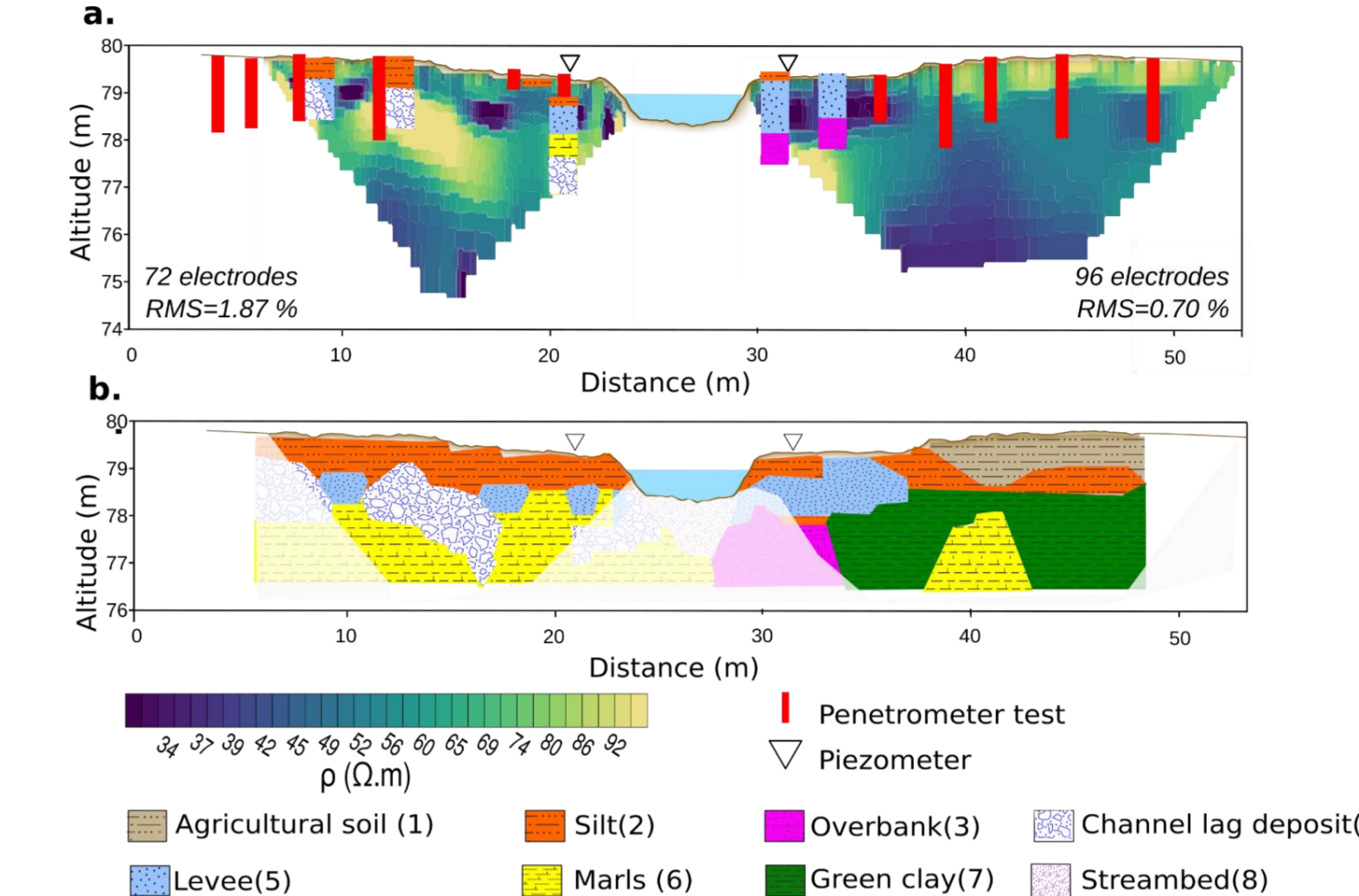
→ Calibration



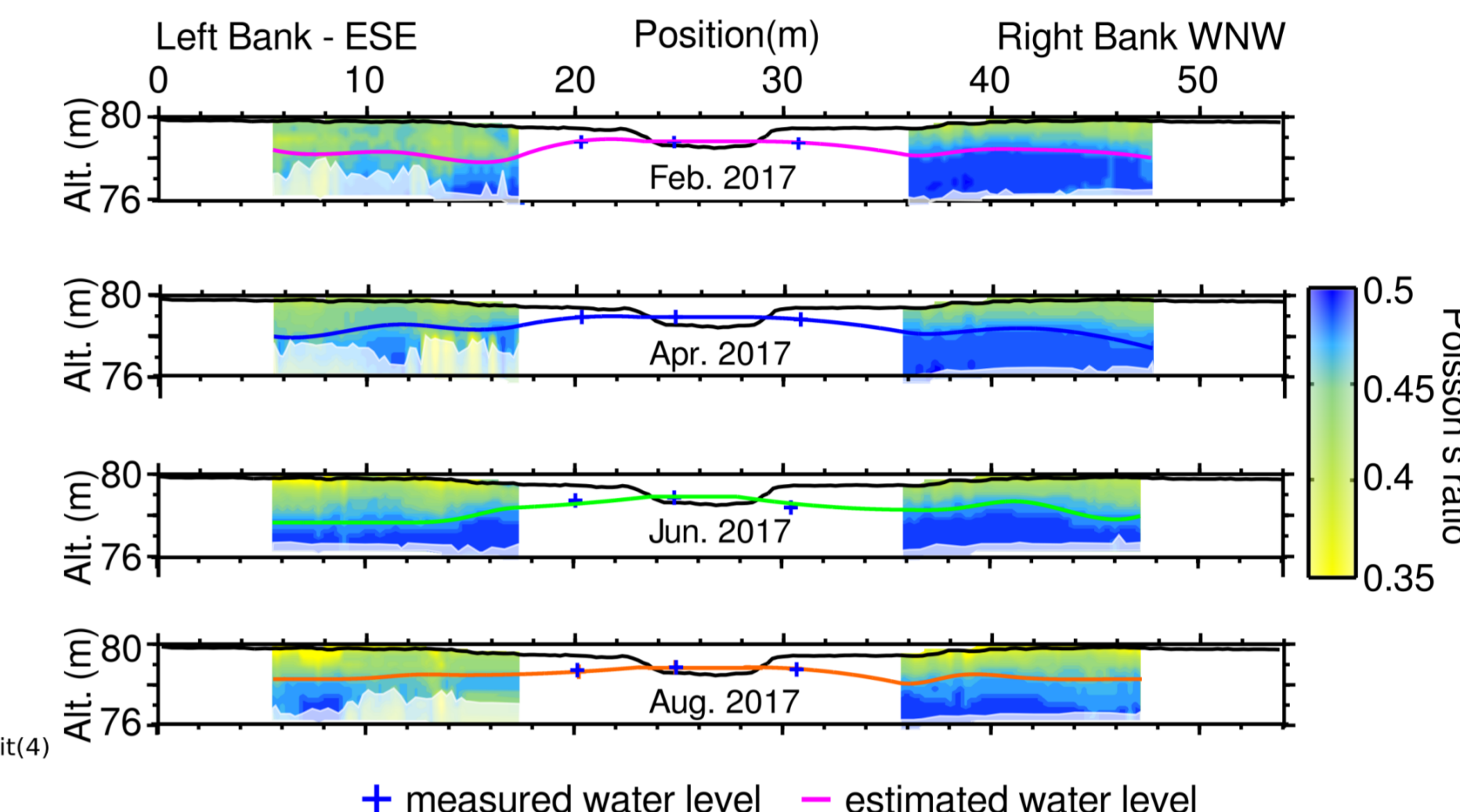
→ Validation



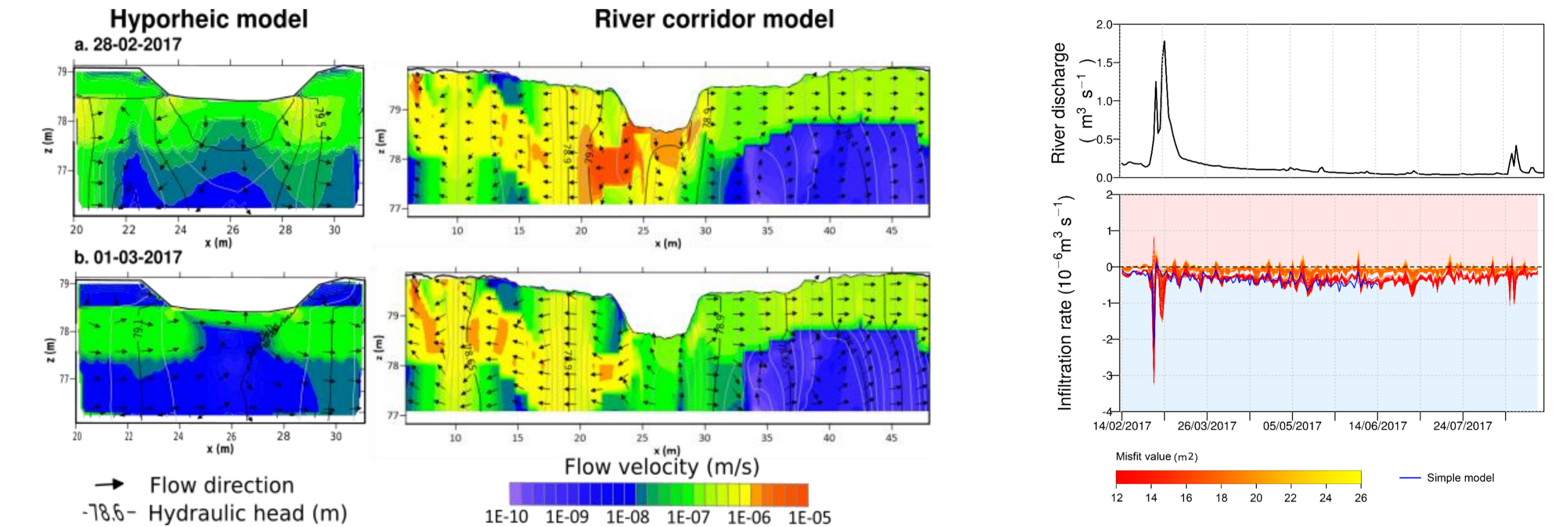
→ Hydrofacies distribution



→ Water table image

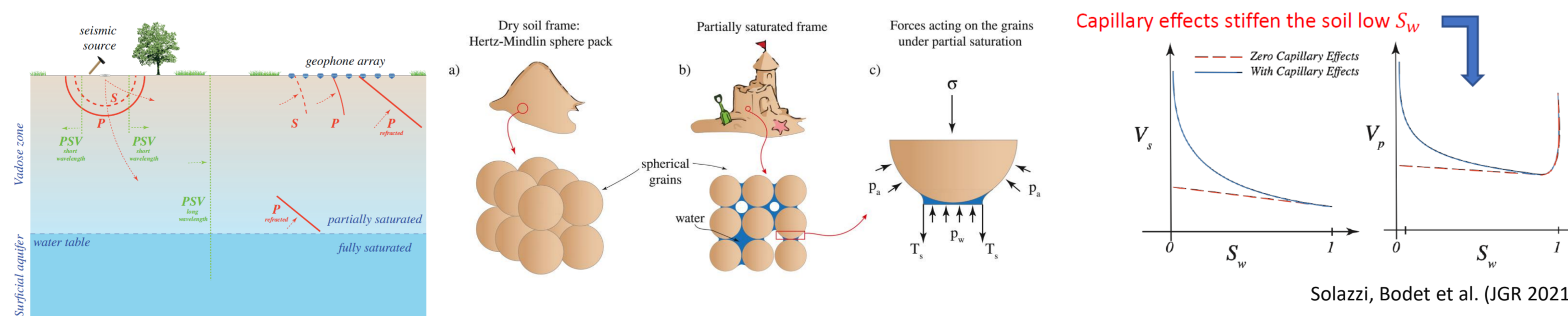


→ Simulations

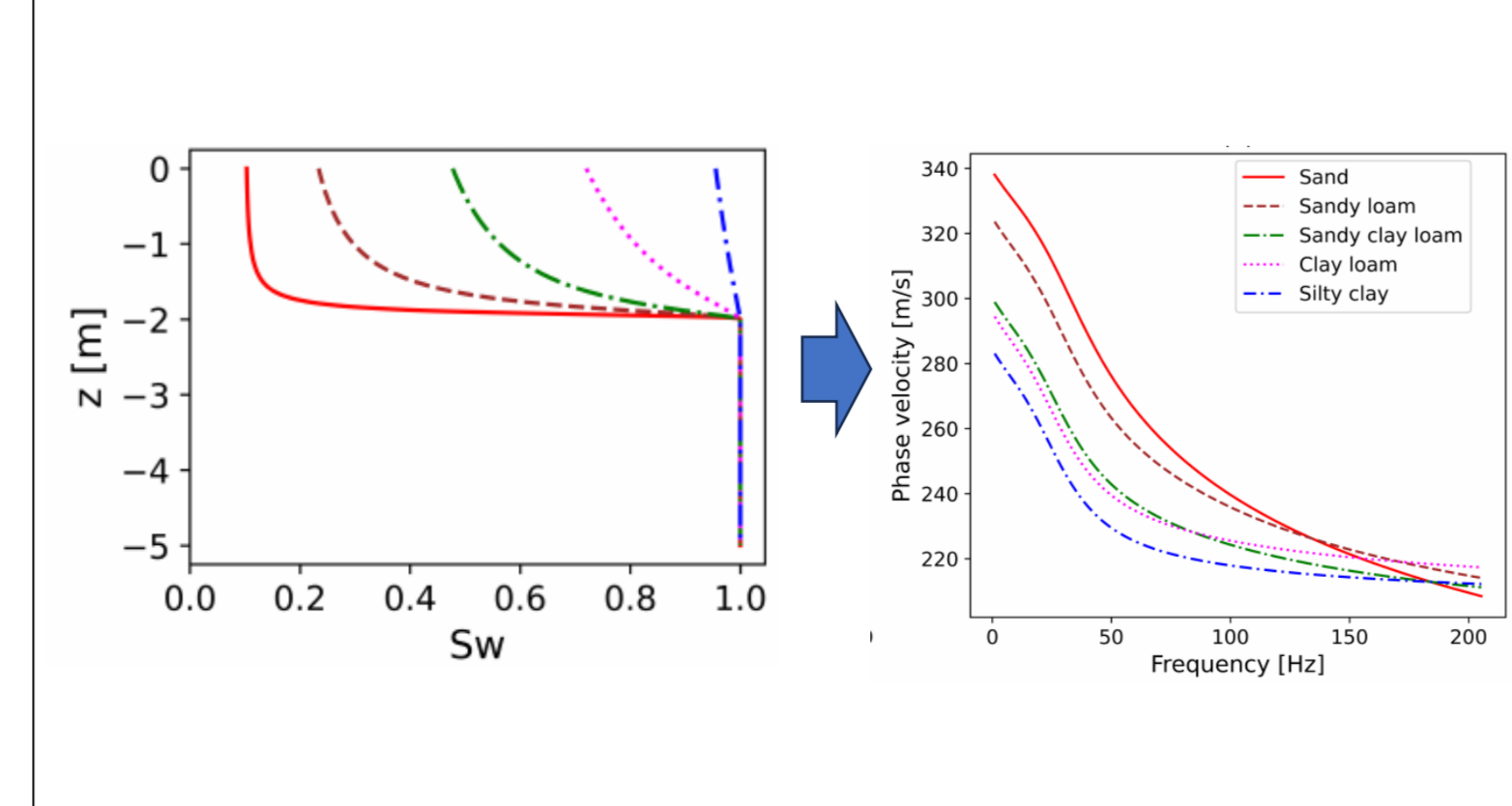


→ Geophysical models provide initial-boundary conditions to calibrate and validate the hydrogeological model & to perform fully integrated 2D river corridor modeling

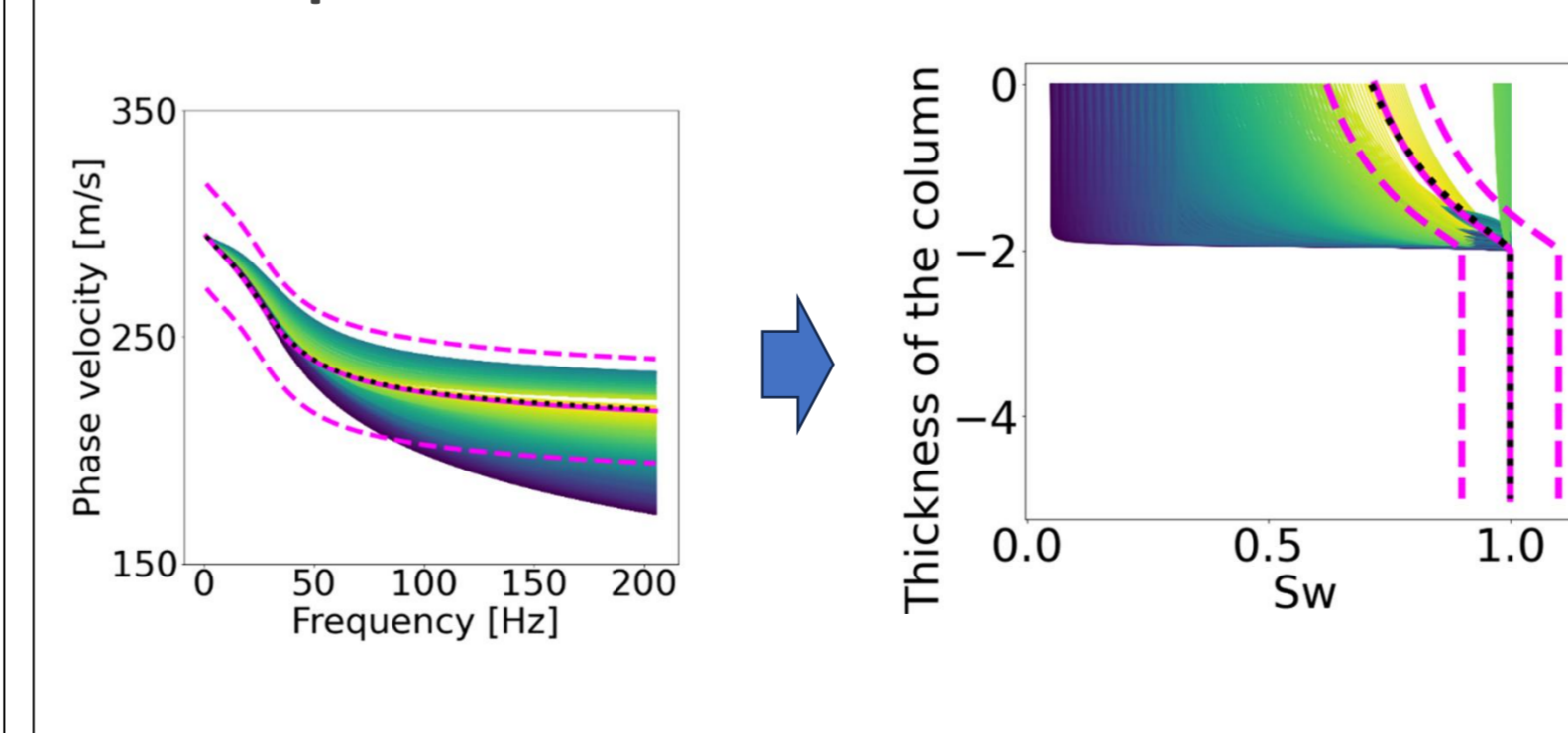
## 4. GW recharge



→ Forward problem sensitive to the hydrofacies (e.g. van Genuchten model)



→ We can then implement the inverse problem... means retrieving a model of saturation profile from dispersion data



Ramon Sanchez Gonzalez (PhD thesis 2021-2024)

## 5. Next steps

1. Characterizing the Propagation of Uncertainty from Geophysical Data to the Models  
→ Probabilistic Joint Inversion Approach;
2. Exploring the Consideration of these Geophysical Models as 'Inputs' to Hydrogeological Models  
→ Propagation of Uncertainties from Geophysical Models  
→ to Petrophysical Relationships;  
→ to Hydrogeological Models...
3. Combining Hydrogeological Simulations with Geophysical Simulations  
→ Achieving More Reliable Calibrations

→ Thermal Seismic Coupling!!

We are currently seeking candidates for the following positions:

- 1 Postdoctoral Researcher
- 1 PhD Candidate

If you are interested in these positions, please do not hesitate to contact us.

Contact: Agnès Rivière : agnes.riviere@minesparis.psl.eu

