



HAL
open science

Epigenome-Wide Associations of Placental DNA Methylation and Behavioral and Emotional Difficulties in Children at 3 Years of Age

Aurélie Nakamura, Lucile Broséus, Jörg Tost, Daniel Vaiman, Silvia Martins, Katherine Keyes, Kim Bonello, Mathilde Fekom, Katrine Strandberg-Larsen, Anne-Laure Sutter-Dallay, et al.

► **To cite this version:**

Aurélie Nakamura, Lucile Broséus, Jörg Tost, Daniel Vaiman, Silvia Martins, et al.. Epigenome-Wide Associations of Placental DNA Methylation and Behavioral and Emotional Difficulties in Children at 3 Years of Age. *International Journal of Molecular Sciences*, 2023, 24 (14), pp.11772-10.3390/ijms241411772 . hal-04245800

HAL Id: hal-04245800

<https://hal.science/hal-04245800>

Submitted on 17 Oct 2023

HAL is a multi-disciplinary open access archive for the deposit and dissemination of scientific research documents, whether they are published or not. The documents may come from teaching and research institutions in France or abroad, or from public or private research centers.

L'archive ouverte pluridisciplinaire **HAL**, est destinée au dépôt et à la diffusion de documents scientifiques de niveau recherche, publiés ou non, émanant des établissements d'enseignement et de recherche français ou étrangers, des laboratoires publics ou privés.



Distributed under a Creative Commons Attribution 4.0 International License



Article

Epigenome-Wide Associations of Placental DNA Methylation and Behavioral and Emotional Difficulties in Children at 3 Years of Age

Aurélie Nakamura ^{1,*} , Lucile Broséus ¹ , Jörg Tost ² , Daniel Vaiman ³ , Silvia Martins ⁴ , Katherine Keyes ⁴ , Kim Bonello ^{5,6} , Mathilde Fekom ⁵ , Katrine Strandberg-Larsen ⁷ , Anne-Laure Sutter-Dallay ^{8,9} , Barbara Heude ¹⁰ , Maria Melchior ⁵ and Johanna Lepeule ^{1,*}

¹ Team of Environmental Epidemiology Applied to Development and Respiratory Health, Institute for Advanced Biosciences (IAB), University Grenoble Alpes, INSERM, 38700 La Tronche, France; lucile.broseus@univ-grenoble-alpes.fr

² Laboratory for Epigenetics and Environment, Centre National de Recherche en Génomique Humaine, CEA—Institut de Biologie François Jacob, University Paris Saclay, 91057 Evry, France; tost@cng.fr

³ From Gametes to Birth, Institut Cochin, U1016 INSERM, UMR 8104 CNRS, Paris Cité University, 75014 Paris, France; daniel.vaiman@inserm.fr

⁴ Department of Epidemiology, Columbia University Mailman School of Public Health, New York, NY 10032, USA; ssm2183@cumc.columbia.edu (S.M.); kmk2104@cumc.columbia.edu (K.K.)

⁵ Institut Pierre Louis d'Epidémiologie et de Santé Publique (IPLESP), Equipe de Recherche en Epidémiologie Sociale (ERES), Sorbonne Université, INSERM, 75571 Paris, France; kim1202@hotmail.fr (K.B.); mathilde.fekom@iplesp.upmc.fr (M.F.); maria.melchior@inserm.fr (M.M.)

⁶ Department of General Practice, School of Medicine, Sorbonne University, 75013 Paris, France

⁷ Section of Epidemiology, Department of Public Health, University of Copenhagen, 1165 Copenhagen, Denmark; ksla@sund.ku.dk

⁸ Bordeaux Population Health, Bordeaux University, INSERM, UMR 1219, 33076 Bordeaux, France; alsutter@ch-perrrens.fr

⁹ University Department of Child and Adolescent Psychiatry, Charles Perrens Hospital, 33000 Bordeaux, France

¹⁰ Center for Research in Epidemiology and Statistics (CRESS), Université Paris Cité and Université Sorbonne Paris Nord, INSERM, INRAE, 75004 Paris, France; barbara.heude@inserm.fr

* Correspondence: aurelie.nakamura@univ-grenoble-alpes.fr (A.N.); johanna.lepeule@univ-grenoble-alpes.fr (J.L.); Tel.: +33-(0)4-76-54-94-66 (J.L.)



Citation: Nakamura, A.; Broséus, L.; Tost, J.; Vaiman, D.; Martins, S.; Keyes, K.; Bonello, K.; Fekom, M.; Strandberg-Larsen, K.; Sutter-Dallay, A.-L.; et al. Epigenome-Wide Associations of Placental DNA Methylation and Behavioral and Emotional Difficulties in Children at 3 Years of Age. *Int. J. Mol. Sci.* **2023**, *24*, 11772. <https://doi.org/10.3390/ijms241411772>

Academic Editor: Ilona Hromadnikova

Received: 12 May 2023
Revised: 4 July 2023
Accepted: 12 July 2023
Published: 21 July 2023



Copyright: © 2023 by the authors. Licensee MDPI, Basel, Switzerland. This article is an open access article distributed under the terms and conditions of the Creative Commons Attribution (CC BY) license (<https://creativecommons.org/licenses/by/4.0/>).

Abstract: The placenta is a key organ for fetal and brain development. Its epigenome can be regarded as a biochemical record of the prenatal environment and a potential mechanism of its association with the future health of the fetus. We investigated associations between placental DNA methylation levels and child behavioral and emotional difficulties, assessed at 3 years of age using the Strengths and Difficulties Questionnaire (SDQ) in 441 mother–child dyads from the EDEN cohort. Hypothesis-driven and exploratory analyses (on differentially methylated probes (EWAS) and regions (DMR)) were adjusted for confounders, technical factors, and cell composition estimates, corrected for multiple comparisons, and stratified by child sex. Hypothesis-driven analyses showed an association of cg26703534 (*AHRR*) with emotional symptoms, and exploratory analyses identified two probes, cg09126090 (intergenic region) and cg10305789 (*PPP1R16B*), as negatively associated with peer relationship problems, as well as 33 DMRs, mostly positively associated with at least one of the SDQ subscales. Among girls, most associations were seen with emotional difficulties, whereas in boys, DMRs were as much associated with emotional than behavioral difficulties. This study provides the first evidence of associations between placental DNA methylation and child behavioral and emotional difficulties. Our results suggest sex-specific associations and might provide new insights into the mechanisms of neurodevelopment.

Keywords: EWAS; DNA methylation; DOHAD; placenta; child behavior; pregnancy; epidemiology

1. Introduction

Behavioral and emotional difficulties of children are expressed as a continuum of symptoms affecting children in their everyday social, school, and family life with various intensities. Behavioral difficulties (also referred to as externalizing symptoms) include, among others, attention deficit hyperactivity disorder (ADHD), conduct problems, and oppositional behavior, while emotional difficulties (or internalizing symptoms) include peer relationship problems, anxiety, and depression [1,2]. About 10 to 15% of preschoolers are estimated to be affected by behavioral or emotional disorders [3,4].

In the context of the Developmental Origins of Health and Disease (DOHaD) [5], the first thousand days of life from conception [6] are a critical period for child development, where organs are simultaneously developing and vulnerable to environmental insults, especially during the gestational period [7,8]. Prenatal etiological factors for emotional and behavioral problems in preschoolers include environmental factors such as chemicals and air pollution [9–11], alcohol and tobacco consumption [12,13], and psychosocial factors [14]. However, mechanisms underpinning these associations remain poorly understood.

The placenta is the pivotal organ of viviparous species enabling the supply of oxygen and nutrients to the fetus, waste elimination, and fetal hormonal and endocrine regulation [15]. It records a molecular memory of the prenatal environment, in which alterations could be potential biomarkers of fetal exposures [16–21] and predictors of health outcomes [22,23]. The placenta is a key organ for fetal and brain development [24,25] and is considered a relevant proxy for brain tissue, with a high number of genes that are expressed at a high level in both placenta and brain tissues [26]. This is well documented with regard to the glucocorticoid and serotonin pathways, which are important for brain maturation and cognitive functions [27]. DNA methylation is the most studied epigenetic mark, especially stable compared to other marks (such as histone code or miRNA profiles), and has been identified as a candidate mechanism underlying child neurodevelopment disorders [20,24]. In some cases, for example, for the tumor suppressor *AHRR*, a decrease in DNA methylation in the promoter region results in an increase in gene expression, while an increase in DNA methylation results in decreased gene expression [28].

A number of placental DNA methylation studies have been conducted with regard to child neurodevelopmental outcomes during the last ten years [22,29–35]. These studies were mostly conducted on neonates, had relatively small sample sizes, and used hypothesis-driven approaches for the vast majority, targeting a few genes belonging to the hypothalamic–pituitary–adrenal (HPA) axis and to the serotonin pathways [22,29–31]. Animal studies showed that dysregulation of glucocorticoids altered fetal brain anatomy and the HPA axis functioning and could predict anxiety in adults [36,37]. Consistently, human placental DNA methylation of the *HSD11B2*, *NR3C1*, and *HTR2A* genes—involved in the HPA and the serotonin pathways—has been shown to be associated with infant neurodevelopment in humans [23]. Males and females present differences in placental DNA methylation levels as well as in the prevalence of behavioral and emotional disorders in childhood [38–40], raising the need to explore sex-specific associations.

Epigenome-wide association studies (EWAS) have the potential to uncover other pathways tuning brain wiring, development, and behavior. However, contrary to studies in cord blood [41–45], only one placental EWAS has so far been performed with regard to neonates' neurobehavior [33]. In this study, conducted on 335 participants, the authors found a statistically significant association between two CpGs within *FHIT* (cg15970800) and *ANKRD11* (cg16710656) and neonate attention. However, to our knowledge, no placental EWAS was conducted on behavioral and emotional difficulties in children, illustrating a gap in the literature.

We first aimed to explore the associations between placental DNA methylation levels and child behavioral and emotional difficulties using both hypothesis-driven and epigenome-wide approaches on data from 441 mother–child dyads from the EDEN cohort study. Placental DNA methylation was measured using Illumina's Infinium HumanMethylation450 (450 K) BeadChip, and child emotional and behavioral symptoms were assessed

using the four negative subscales of the Strengths and Difficulties Questionnaire (SDQ), involving conduct problems and hyperactivity/inattention (that can be summed up to an externalizing symptoms subscale) and emotional symptoms and peer relationship problems (that can be summed up an internationalizing symptoms subscale). The second aim was to explore potential sex-specific associations by conducting stratified analyses by child sex.

2. Results

2.1. Characteristics of Study Participants

Women were, on average, 29.6 years of age (± 4.8 years) at child conception, and about half of them were multiparous. Most women (94%) were Caucasian, and about two-thirds had higher education. Approximately 39% and 22% of women experienced depressive symptoms or adverse events during their pregnancy, respectively. Forty-three percent of women were exposed (either passively or directly) to tobacco smoke during their pregnancy, and 26% were occasional or daily smokers. This sample included 228 boys (52%) and 213 girls (Table 1).

Table 1. Description of the study population. Italics in all the columns + “Mean” and “sd” labels for quantitative variables have been used to distinguish *means* from N and *sd* from %.

	N = 441	N or Mean	% or sd
Emotional and behavioural difficulties			
Emotional symptoms		1.8	1.7
Girls		2.0	1.8
Boys		1.6	1.7
Peer relationship problems		1.4	1.5
Girls		1.3	1.3
Boys		1.6	1.6
Internalizing symptoms		3.2	2.6
Girls		3.3	2.4
Boys		3.2	2.8
Conduct problems		3.2	2.0
Girls		2.9	1.9
Boys		3.4	2.0
Inattention/hyperactivity		3.4	2.2
Girls		3.1	2.1
Boys		3.6	2.3
Externalizing symptoms		6.5	3.6
Girls		6.1	3.4
Boys		6.9	3.7
Total symptoms		9.8	4.9
Girls		9.4	4.6
Boys		10.1	5.1
Sociodemographic characteristics			
Mother’s age at conception (years)		29.6	4.8
Parity			
No other child		206	0.47
At least one other child		235	0.53
Mother’s ethnicity			
Caucasian		415	0.94
Other		26	0.06
Mother’s educational attainment			
Low		139	0.32
High		302	0.68

Table 1. Cont.

	N = 441	N or Mean	% or sd
Pregnancy characteristics			
Depressive symptoms during pregnancy			
No (CES-D < 16)		343	0.78
Yes (CES-D ≥ 16)		98	0.22
Adverse events during pregnancy			
None		270	0.61
At least one		171	0.39
Maternal tobacco smoking exposure during pregnancy			
Non-smoker or former smoker and no secondhand		251	0.57
Non-smoker or former smoker and secondhand		74	0.17
Occasional or smoker during all pregnancy		116	0.26
Infant characteristics			
Sex			
Boy		228	0.52
Girl		213	0.48
Estimated cellular composition			
Endothelial		0.10	0.03
Hofbauer		0.02	0.01
nRBC		0.02	0.01
Stromal		0.11	0.03
Syncytiotrophoblast		0.64	0.08
Trophoblasts		0.13	0.06

2.2. Emotional and Behavioral Difficulties at 3 years of age

Emotional and behavioral difficulties in children were assessed by mothers using the four negative subscales (conduct problems, hyperactivity/inattention, emotional symptoms, and peer relationship problems, each subscale being rated out of 10) of the French version of the Strengths and Difficulties Questionnaire (SDQ). Internalizing symptoms (rated out of 20) were defined as the sum of emotional symptoms and peer relationship problems subscales, and externalizing symptoms (rated out of 20) as the sum of conduct problems and hyperactivity/inattention subscales. The addition of internalizing symptoms and externalizing symptoms resulted in a total score (ranging from 0 to 40). In the description and interpretation of the results, “emotional difficulties” can relate to either emotional symptoms, peer relationship problems, or internalizing symptoms, and “behavioral difficulties” to either conduct disorders, inattention/hyperactivity, or externalizing symptoms (Figure 1).

In this study, internalizing and externalizing symptoms scores, respectively, varied between 0 and 15 and between 0 and 17. Children presented more externalizing (mean score = 6.52/20; sd = 3.60) than internalizing (mean = 3.24/20; sd = 2.41) symptoms (paired Welch test p -value < 2.2×10^{-16} , Supplementary Figure S1A). Boys presented on average more externalizing symptoms and total difficulties than girls (mean externalizing symptoms score = 6.94 for boys vs. 6.06 for girls, Welch test p -value = 0.01; mean total difficulties score = 10.11 for boys vs. 9.37 for girls, Welch test p -value = 0.11). Their overall level of internalizing symptoms was not significantly different (mean score = 3.17 for boys vs. 3.31 for girls, Welch test p -value = 0.57); however, girls presented on average more emotional symptoms (mean score = 1.60 for boys vs. 2.02 for girls, Welch test p -value = 0.01) and fewer peer relationship problems than boys (mean score = 1.56 for boys vs. 1.29 for girls, Welch test p -value = 0.05) (Table 1). Overall, these results suggest the need to investigate

sex-specific associations with regard to DNA methylation levels. The distributions of all SDQ subscales were right-skewed, and 25% of the children presented either no emotional symptoms or peer relationship problems (Supplementary Figure S1B).

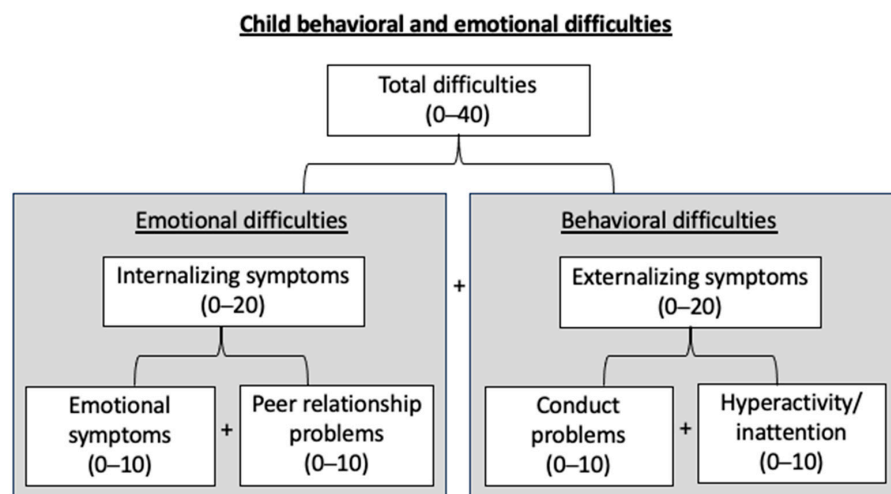


Figure 1. Child emotional and behavioral difficulties assessment at 3 years of age using the four negative subscales of the Strengths and Difficulties Questionnaire (SDQ). Internalizing symptoms = emotional symptoms + peer-relationships problems; externalizing symptoms = inattention/hyperactivity + conduct problems; total = internalizing symptoms + externalizing symptoms.

The results of all the analyses conducted between placental DNA methylation levels and child emotional and behavioral difficulties at 2 years of age are summarized in Table 2. More precisely, Table 2 reports the number of CpGs associated with each type of symptom and for each type of analysis conducted. Detailed results are provided in the Supplementary Tables mentioned in the following subsections.

Table 2. Summary of the hypothesis-driven, EWAS, and DMR analyses—Number of significant associations between placental DNA methylation and child behavior; pFDR < 0.05 for the hypothesis-driven and epigenome-wide association studies and pSidak < 0.05 for the differentially methylated regions analyses; + positive association; – negative association; CC = cellular composition, EWAS = epigenome-wide association study, DMR = differentially methylated region. Internalizing symptoms subscale = emotional symptoms subscale + peer-relationships problems subscale; externalizing symptoms subscale = inattention/hyperactivity subscale + conduct problems subscale; total = internalizing symptoms subscale + externalizing symptoms subscale (indicated by different colors).

Approach/Subscale	Emotional Difficulties			Behavioural Difficulties			Total
	Emotional Symptoms	Peer Relationship Problems	Internalizing symptoms	Inattention/Hyperactivity	Conduct Problems	Externalizing Symptoms	
Hypothesis driven							
HPA/Serotonin pathways (53 genes—736 CpGs)	0	0	0	0	0	0	0
Literature review (92 genes—3 101 CpGs)	1+	0	0	0	0	0	0
EWAS	0	2–	0	0	0	0	0
Girls	17+/4–	0	1+	0	0	0	0
Boys	0	0	0	0	0	0	0
DMR	11	5	12	5	4	4	12
Girls	48	12	17	7	3	0	11
Boys	4	4	9	5	4	0	9
EWAS without CC adjustment	0	1–	0	0	0	0	0
DMR without CC adjustment	13	4	7	6	5	5	12

2.3. Hypothesis-Driven Analyses

In the unstratified analyses performed on genes selected from our literature review, one CpG (cg26703534), located on chromosome five, in the body of the *AHRR* gene, was significantly positively associated with the emotional symptoms subscale, after correction for multiple testing ($\beta = 5.85$; pFDR = 0.03; average level of methylation = 90%; sd = 4%). The top one hundred CpGs with the smallest p -values with regard to child emotional and behavioral symptoms are listed for each of the two hypothesis-driven analyses carried out in Supplementary Tables S1 and S2. The main functions of the genes mentioned in the results are summarized in Supplementary Table S3. In analyses stratified by child sex, no association reached statistical significance after applying an FDR correction for multiple testing.

2.4. Epigenome-Wide Association Study Analyses (EWAS)

As both emotional and behavioral difficulties of the children and placental DNA methylation levels present sex specificities, unstratified EWAS and child sex-stratified EWAS were conducted. In the unstratified EWAS, an increase of one percentage of placental DNA methylation at cg10305789 (0 to 200 bases upstream of the *PPP1R16B* transcription starting site) and cg09126090 (intergenic region) were, respectively, associated with a decrease of 5.85 (pFDR < 0.01; average level of methylation = 28%; sd = 5%) and 5.60 (pFDR = 0.04; average level of methylation = 24%; sd = 6%) in peer relationship problem scores (Supplementary Table S4). Among girls, twenty-one CpGs were significantly associated with the emotional symptoms subscale (17 positive and 4 negative associations), and one CpG was significantly positively associated with the internalizing symptoms subscale (Supplementary Table S5). In boys, no association between DNA methylation and child behavior difficulties was statistically significant (Supplementary Table S6). The one hundred CpGs with the smallest p -value with regards to any of the SDQ subscales studied differed from girls to boys. Girls' and boys' effect sizes were little correlated (between 0 and 8% depending on the SDQ subscale, see Figure 2A). On average, absolute effect sizes related to behavioral and total difficulties were higher in girls than in boys. This tendency was not observed for emotional difficulties effect sizes (Figure 2B).

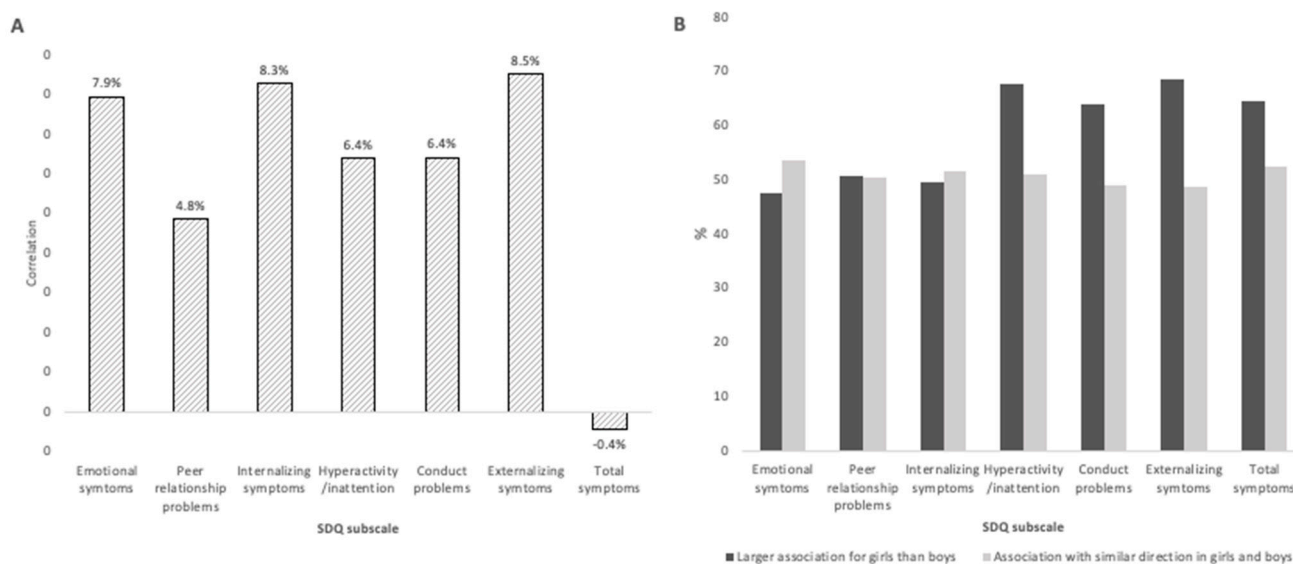


Figure 2. Comparison of EWAS effect sizes in boys and girls using the 371 713 CpGs included in the EWAS. (A) Correlation coefficients between beta estimates in girls and in boys; (B) Percentage of effects sizes (absolute value betas) that are larger for girls than for boys; percentage of effects sizes with the same direction (either positive or negative) between girls and boys.

2.5. Differentially Methylated Regional (DMR) Analyses

DMR analysis results are summarized in Tables 2 and 3 and in Supplementary Table S7. Table 2 describes the number of DMRs significantly associated with each of the SDQ subscales for the DMR analyses unstratified as well as stratified by child sex. The list of the DMRs significantly associated with at least one of the SDQ subscales and the number of CpGs included in the DMR can be found in Table 3 (only DMRs including at least 5 CpGs) and in Supplementary Table S7 (all the DMRs).

Among the 33 DMRs significantly associated with at least one sub-scale of the SDQ, the average number of CpGs per DMR was 8, and 23 DMRs (70%) included at least 5 CpGs (Supplementary Table S7). Among the 33 DMRs, all but 1 (located within *UBXN11*) were positively associated with emotional and behavioral difficulties of the children (see Supplementary Table S8 for the full description of the DMRs). Interestingly, 1 DMR, located within *C6orf47*, was significantly associated with many subscales, including internalizing symptoms (18 CpGs), emotional symptoms (18 CpGs), externalizing symptoms (22 CpGs), hyperactivity/inattention (22 CpGs), and total difficulties (27 CpGs). Among the 23 DMRs containing at least 5 CpGs, 15 were associated with emotional difficulties subscales (either emotional symptoms, peer relationship problems, or internalizing symptoms), including DMRs within *BSCL2*, *CALCB*, *CLIP4*, *EVX1*, and *THSD7A*, which are all protein-coding genes. In addition, 9 DMRs were associated with behavioral difficulties subscales (hyperactivity/inattention, conduct problems, or externalizing symptoms); 2 both with emotional and behavioral difficulties subscales (within *C6orf47* and *ZBBX*) and 1 only with total subscale (Table 3A,B). There were no common DMR between hyperactivity/inattention and conduct problems subscales and between emotional problems and peer relationship problems subscales, suggesting specific associations between DNA methylation and each SDQ subscale (Table 3A,B).

When stratifying our statistical analyses by child sex, we noticed numerous differences that are summarized in Table 3B,C and fully described in Supplementary Tables S9 and S10. In boys, 19 DMRs including at least 5 CpGs (out of 27 DMRs in total—see Supplementary Table S7) were associated with at least one of the SDQ subscales: 7 (4 negatively and 3 positively) with at least one of the emotional difficulties subscales, 7 (2 negatively and 5 positively) with at least one of the behavioral difficulties subscales and 2 (positively) with total problems (Table 3B,C and Supplementary Table S10). In boys, DMRs with the largest number of significantly deregulated CpGs (≥ 10) associated with emotional difficulties were located within *C5orf13* and *UBXN11*, and the ones associated with behavioral difficulties were located within *GGT1*, *ZNF655*, and within an intergenic region encompassing cg21334513 (Supplementary Table S10).

Among girls, 49 DMRs with at least 5 CpGs (out of 83 DMRs in total, Supplementary Table S7) were associated with at least one SDQ subscale; including 39 DMRs associated with at least one of the emotional difficulties subscales, 7 with at least one of the behavioral difficulties subscales and 3 with total difficulties subscale. Among the largest DMRs (including at least 10 CpGs), all but two were associated with emotional and total difficulties subscales in boys and all but three were associated with emotional and total difficulties in girls.

Most of the DMRs were positively associated with emotional and behavioral difficulties in boys as well as in girls. The exceptions were the DMRs associated with peer relationship problems. In boys, all the DMRs with at least 5 CpGs associated with peer relationship problems presented a negative association, and in girls, 5 out of 12 presented a negative association.

Table 3. Number of CpGs within the identified differentially methylated regions (DMR) with at least five CpGs associated with child SDQ at 3 years of age—Unstratified and stratified analyses on child sex. * DMR significantly associated with at least one of the emotional difficulties subscales (emotional symptoms, peer relationship problems, and internalizing symptoms); † DMR significantly associated with at least one of the behavioral difficulties subscales (hyperactivity/inattention, conduct problems, and externalizing symptoms); NA = intergenic region. Internalizing symptoms subscale = emotional symptoms subscale + peer-relationships problems subscale; externalizing symptoms subscale = inattention/hyperactivity subscale + conduct problems subscale; total = internalizing symptoms subscale + externalizing symptoms subscale (indicated by different colors).

DMR	All Children (N = 441)						Only Boys (N = 228)						Only Girls (N = 213)								
	Emotional Symptoms	Peer relationship Problems	Internalizing Symptoms	Hyperactivity/Inattention	Conduct Problems	Externalizing Symptoms	Total Symptoms	Emotional Symptoms	Peer relationship Problems	Internalizing Symptoms	Hyperactivity/Inattention	Conduct Problems	Externalizing Symptoms	Total Symptoms	Emotional Symptoms	Peer relationship Problems	Internalizing Symptoms	Hyperactivity/Inattention	Conduct Problems	Externalizing Symptoms	Total Symptoms
(A) DMRs only found in unstratified analyses (N = 9)																					
ANKS1B *	6																				
BIN2 *			7																		
CALCB *	6																				
EVX1 *	6		6			6															
NPY *			6																		
ProSAPiP1 †				9																	
THSD7A *	7		7			8															
VWCE *			8			11															
ZBBX *†	11		9																		
(B) DMRs found both in unstratified and stratified analyses by child sex (N = 14)																					
BSCL2 *	9													9							
C3orf26 *	6		6				5		7												
C5orf13 *	13		12			13	13														
C6orf47 *†	18		18	22		27						18					28				25
CCDC62						9											8				8
CLIP4 *	8													8							9

Table 3. Cont.

DMR	All Children (N = 441)							Only Boys (N = 228)							Only Girls (N = 213)						
	Emotional Symptoms	Peer relationship Problems	Internalizing Symptoms	Hyperactivity/Inattention	Conduct Problems	Externalizing Symptoms	Total Symptoms	Emotional Symptoms	Peer relationship Problems	Internalizing Symptoms	Hyperactivity/Inattention	Conduct Problems	Externalizing Symptoms	Total Symptoms	Emotional Symptoms	Peer relationship Problems	Internalizing Symptoms	Hyperactivity/Inattention	Conduct Problems	Externalizing Symptoms	Total Symptoms
(B) DMRs found both in unstratified and stratified analyses by child sex (N = 14)																					
<i>GGT1</i> *			9			9					10		9								
<i>GPR75</i> †			9											9							
<i>FAM3B</i> †				8		8	7			7											
<i>MIR564</i> †					12													13			
<i>RUFY2</i> †				8													7				
<i>THBD</i> †					6					7											
<i>UBXN11</i> *		5						12	11												
<i>ZNF844</i> †					6	6	6											7			
(C) Sex-specific DMRs (N = 54) (** No significant DMR)																					
<i>ACP 5</i> *									5												
<i>ADAMTS17</i> *														11		6					
<i>B4GALNT2</i> *														7		5					
<i>C6orf52</i> *															5						
<i>C10orf25</i> *																10					
<i>C16orf67</i> *															5						
<i>C17orf46</i> *								7	6												
<i>CCNA1</i> *														5							
<i>CROT</i> *														12							
<i>CWH43</i> *														8							
<i>EN1</i>														5							
<i>FLJ42289</i> *														6							

Table 3. Cont.

DMR	All Children (N = 441)							Only Boys (N = 228)							Only Girls (N = 213)						
	Emotional Symptoms	Peer relationship Problems	Internalizing Symptoms	Hyperactivity/Inattention	Conduct Problems	Externalizing Symptoms	Total Symptoms	Emotional Symptoms	Peer relationship Problems	Internalizing Symptoms	Hyperactivity/Inattention	Conduct Problems	Externalizing Symptoms	Total Symptoms	Emotional Symptoms	Peer relationship Problems	Internalizing Symptoms	Hyperactivity/Inattention	Conduct Problems	Externalizing Symptoms	Total Symptoms
(C) Sex-specific DMRs (N = 54) (** No significant DMR)																					
<i>FLOT1</i> *																					8
<i>GNAS</i> *														10			11				
<i>HECW1</i> *															6						
<i>HFE</i> *														6							
<i>HLA-F</i> *														10							
<i>HORMAD 2</i> *															9						
<i>IGFBP3</i> *														8		7					
<i>KIAA0101</i>													8								
<i>LOC148824</i> *															5						
<i>LOC641518</i> *														5							
<i>MECOM</i> *															5						
<i>MOCS1</i>													8								
<i>NA (cg04373548)</i> †																			8		
<i>NA (cg05931423)</i> *															5						
<i>NA (cg18081456)</i> *																5					
<i>NA (cg18356974)</i>																					5
<i>NA (cg21334513)</i> †											12										
<i>NA (cg27405554)</i>																					5
<i>NR2E1</i> *															9						
<i>PAX6</i> *																10					
<i>PRRT1</i> *															14						

Table 3. Cont.

DMR	All Children (N = 441)							Only Boys (N = 228)							Only Girls (N = 213)						
	Emotional Symptoms	Peer relationship Problems	Internalizing Symptoms	Hyperactivity/Inattention	Conduct Problems	Externalizing Symptoms	Total Symptoms	Emotional Symptoms	Peer relationship Problems	Internalizing Symptoms	Hyperactivity/Inattention	Conduct Problems	Externalizing Symptoms	Total Symptoms	Emotional Symptoms	Peer relationship Problems	Internalizing Symptoms	Hyperactivity/Inattention	Conduct Problems	Externalizing Symptoms	Total Symptoms
(C) Sex-specific DMRs (N = 54) (** No significant DMR)																					
<i>RIN2</i>																					5
<i>RPS6KA2</i> †																					
<i>SEC14L4</i> *									7		9										
<i>SERPING1</i> *															6						
<i>SOX11</i> *														5	5						5
<i>SP9</i> †																					
<i>STAM</i> †											6										
<i>TBX15</i> *											6										
<i>TEKT1</i>																					
<i>TM6SF1</i> *															5						
<i>TMEM176B</i> *															6						
<i>TRIM26</i> *															10						
<i>TRIM72</i> *															14						
<i>TSPYL3</i> *															13						
<i>TSTD1</i> *																10					
<i>WSCD2</i> *								5		5											5
<i>ZFP42</i> *															9						
<i>ZMYND10</i> †																	11				
<i>ZNF655</i>																					10
<i>ZNF780B</i> *															5						
<i>ZSCAN16</i> *																8					

2.6. Sensitivity Analyses

In the hypothesis-driven analyses, cg26703534 (*AHRR*) was no longer significantly associated with the emotional symptoms subscale when the association was not adjusted for estimates of cellular heterogeneity, but the beta of the association remained close to the one of the associations with adjustment; furthermore, this was the CpG with the smallest *p*-value with regards to the emotional symptoms subscale ($\beta = 5.36$; *pFDR* = 0.13 without adjustment for cellular composition vs. $\beta = 5.85$; *pFDR* = 0.03 with adjustment for cellular composition, Supplementary Tables S11 and S12).

In the EWAS, placental DNA methylation at cg10305789 (*PPP1R16B*) remained negatively significantly associated with the peer relationship problems subscale ($\beta = -5.34$; *pFDR* = 0.03). The association between cg09126090 (intergenic region) and peer relationship problems subscale found in the analyses adjusted for cell composition was no longer significant ($\beta = -4.17$; *pFDR* = 0.90), but it belonged to the top 5 hits with the strongest associations with peer relationship problems subscale (Supplementary Table S13). A total number of 31 DMRs were found to be associated with any of the SDQ subscales, and an 81% concordance between the analyses with and without adjustment for cellular composition was estimated (see Supplementary Tables S14 and S15 for the detailed results of the DMR analyses without adjustment for cell mix composition).

3. Discussion

Our study, based on the largest to-date sample of placentas collected from the longitudinal EDEN cohort study, identified differentially methylated CpG sites and regions (DMR) with regards to child emotional and behavioral difficulties using both hypothesis-driven and epigenome-wide approaches. Our results mostly show positive associations between placental DNA methylation and child emotional and behavioral symptoms. They suggest that DNA methylation alterations could affect both several domains or could be domain-specific, and could affect either both sexes or could be sex-specific for some genomic regions, with more hits in girls.

In the hypothesis-driven analyses, children's emotional symptoms were positively associated with methylation of cg26703534 located in the gene body of the aryl hydrocarbon receptor repressor (*AHRR*) ($\beta = 5.85$; *pFDR* = 0.03). *AHRR* is a known tumor suppressor gene involved in the regulation of cell growth and differentiation, and detoxification pathways. The relationship between the gene body methylation and the expression of the gene remains unclear. Interestingly, in placenta and cord blood, *AHRR* methylation seems to be involved in response to maternal tobacco smoking [28,46–48]. This could suggest *AHRR* methylation as a candidate mediator of the association between tobacco smoking exposures during pregnancy and later child emotional and behavioral symptoms [20,46,49]. In adults, decreased blood methylation of *AHRR*, in particular on cg26703534, has been associated with post-traumatic stress disorder cases [50,51].

In the EWAS, two CpG sites were significantly negatively associated with peer relationship problems in children: cg09126090, located on an intergenic region on the first chromosome, and cg10305789, located within the promoter region of *PPP1R16B* on the 20th chromosome. *PPP1R16B* is involved in protein phosphatase binding, and its expression has been associated with pre-eclamptic human placentas [52] and maternal hyperglycemia in mice [53]. At the regional level, 33 DMRs were—mostly positively—significantly associated with at least one of the subscales of the SDQ. Twice as many DMRs were associated with emotional difficulties (including emotional symptoms and peer relationship problems) than behavioral difficulties (including inattention-hyperactivity and conduct problems). Only three DMRs were associated with both emotional and behavioral difficulties: within *C6orf47*, an unidentified protein-coding gene located on chromosome six, whose placental methylation has been associated with maternal circadian disruption [54]; *C5orf13*, which may have roles in neural function and cell differentiation [55] and which is highly expressed in brain and placenta; and *UBXN11*, a protein-coding gene involved in the control of cellular processes, such as protein degradation [56]. Previous studies in mouse models

suggest that *UBX* family genes are essential for fetal development [57]. In humans, placental *UBXN11* methylation has been associated with lower expression of the gene and with higher birth weight [58]. Within behavioral and emotional difficulties, the fact that there was no overlap between the DMRs associated with inattention/hyperactivity and conduct problems subscales on the one hand and with emotional symptoms and peer relationship problems subscales on the other hand suggest that associations could be domain-specific. DMRs tended to be negatively associated with peer relationship problems. On the opposite, most of the DMRs were positively associated with the other SDQ subscales.

The effect sizes observed in boys were little correlated with the ones observed in girls and tended to be greater in girls than in boys. In the meantime, more DMRs were associated with emotional and behavioral difficulties in girls compared to boys. Only the DMR within *C6orf47* was associated with emotional and behavioral difficulties in both girls and boys. In girls, DMRs were mostly associated with emotional difficulties, whereas in boys, DMRs were as much associated with emotional than behavioral difficulties. Previous studies showed that girls might be more prompt to emotional difficulties, whereas boys were more likely to encounter behavioral difficulties [59]. These results could suggest some sex specificities in terms of DNA methylation marks, both at individual CpG and regional levels, with regards to child emotional and behavioral symptoms at 3 years of age. Sexual dimorphism of the placental methylome [22,38,60–62] and of the brain structure and function development [63,64] has been widely documented. Placental dimorphism could be due to distinct effects of sexual hormones and chromosomes [65]. In the current study, we identified for the first time both global and sex-specific differentially methylated probes and regions in the placenta associated with emotional and behavioral difficulties in children. A number of CpGs and DMRs associated with emotional and behavioral difficulties in children did not overlap between boys and girls. Such changes to the placental methylome might partly explain the sex-based differences observed in neurodevelopmental disorders. The placental DNA methylation dimorphism could also result in the distinct transport of environmental pollutants and nutrients through the placenta between male and female fetuses, resulting in a sex-specific response of the fetus [62,66]. Overall, our results provide additional evidence in favor of a mediating role of the placental methylome in the developmental origins of health and diseases [67,68].

Interestingly, in our unstratified analyses, we identified some DMRs that have been previously involved in mental health issues. The emotional symptoms subscale was significantly positively associated with DMRs located within *EVX1*, which is involved in central nervous system development, and *THSD7A*, which has been shown to be highly expressed in the placenta and could play an important role in the appropriate vascularization of the placenta [69]. Placental DNA methylation of *CALCB*, involved in hormone and neuropeptide hormone activity, and *CLIP4*, a biomarker of suicidal ideation [70], were also associated with the emotional symptoms subscale in our unstratified analyses as well as in girls for *CLIP4*. The peer relationship problems subscale was significantly positively associated with DMRs located near *BSCL2* (in unstratified analyses and in girls), involved in the adipogenesis and glucose/energy metabolism pathways. The hyperactivity/inattention subscale was significantly associated with DMRs located near the *FAM3B* gene (in unstratified analyses and in boys), which is involved in cytokine activity, and *ProSAPiP1*, *RUFY2* (both in unstratified analyses and in boys) and *ZBBX* (only in unstratified analyses) genes, previously identified as a candidate susceptibility genes for ADHD [71]. Regarding prenatal exposures, *ZBBX* placental methylation was found to be positively associated with maternal triclosan exposure in boys from the EDEN cohort [19]. Furthermore, DMRs within *GGT1* and *ZNF655*, associated with behavioral difficulties, were previously found to be associated with maternal tobacco smoking during pregnancy [72] and smoking status in adults [73].

In a previous EWAS conducted on a sample of 335 mother–neonate dyads, Paquette and colleagues [33] identified a statistically significant positive relationship between placental DNA methylation at a CpG located within *FHIT* and newborn attention and

a negative relationship between placental DNA methylation of *ANKRD11* and neonate attention scores, measured using the NNNS scale and without correction for multiple testing. Interestingly, these CpG sites within the *FHIT* and *ANKRD11* genes belonged to the top 100 CpGs associated with child emotional and behavioral development in our hypothesis-driven approach, but they were not statistically significant after correction for multiple testing. The SDQ and the NNNS evaluate different domains of child development at different ages: 3 years of age for the SDQ in our study versus newborn in Paquette and colleagues, which can explain the small overlap between the two studies.

Our study is the so far only study that characterized the associations between placental DNA methylation and child behavior among preschoolers. It presents several strengths. Standardized tools were used for assessing child behavior and adjusting our analyses for the major confounding factors in the association between DNA methylation and child behavior. Whether adjusting EWAS for cell heterogeneity is relevant is still debated [74,75]. Epigenetic marks are highly specific to cell types in the placenta as in other tissues. Therefore, part of the DNA methylation levels measured are driven by the cell composition of the tissue sample [76]. Our analyses were adjusted for cell heterogeneity [28], using placenta reference-based estimates [77] that showed better performance than reference-free estimates [78]. Adjusting the analyses on cellular composition estimates had little effect on our conclusions. Finally, conducted analyses were stratified by child sex in order to take into account potential sex-specificities in the association of DNA methylation with child behavior [38,79].

Child emotional and behavioral problems were not assessed by a clinical evaluation but by the Strengths and Difficulties Questionnaires [80]. However, this scale has shown acceptable performances for assessing emotional and behavioral problems in school-aged children. The SDQ has notably been validated among preschoolers in its Swedish version [81]. We might lack statistical power to detect significant associations between placental DNA methylation at a CpG level and child emotional and behavioral difficulties. In order to overcome the lack of statistical power, differentially methylated regions analyses were conducted in addition to CpG-specific analyses. Most of the DMRs included a high number of CpGs (on average, eight CpG per DMR in the unstratified analyses), which reinforces the robustness of our results. One perspective of this study would be to include larger sample size, by conducting a meta-analysis using children from birth cohorts consortia, for example [20].

4. Materials and Methods

4.1. Study Population

Mothers and children included in this study are a subset of the EDEN Mother–Child Cohort study participants [82]. Between 2003 and 2006, 2002 pregnant women were recruited before 24 weeks of gestation in the university hospitals of Nancy and Poitiers, France. Exclusion criteria included multiple pregnancies, pre-pregnancy diabetes, French illiteracy, and plans to move outside the region within the following 3 years. Lifestyle, demographic and medical data were collected by questionnaires either completed directly by participating women or administered by midwives during clinical examinations between 24 and 28 weeks of gestation, and additionally at 4 months, 8 months, 1 year, 2 years, 3 years, 5.5 years, and at 8 years post-delivery. DNA methylation (DNAm) was measured in placental samples from 668 women included in the EDEN cohort. Among women with measures of DNAm, children’s behavioral and emotional difficulties were available for 474 participants. Finally, our study population included 441 dyads without missing values on any of the covariates (Figure 3). The EDEN cohort study received approval from the ethics committee (CCPPRB) of Kremlin Bicêtre and from the French data privacy institution Commission Nationale de l’Informatique et des Libertés (CNIL). Written consent was obtained from the mother for herself and for the offspring.

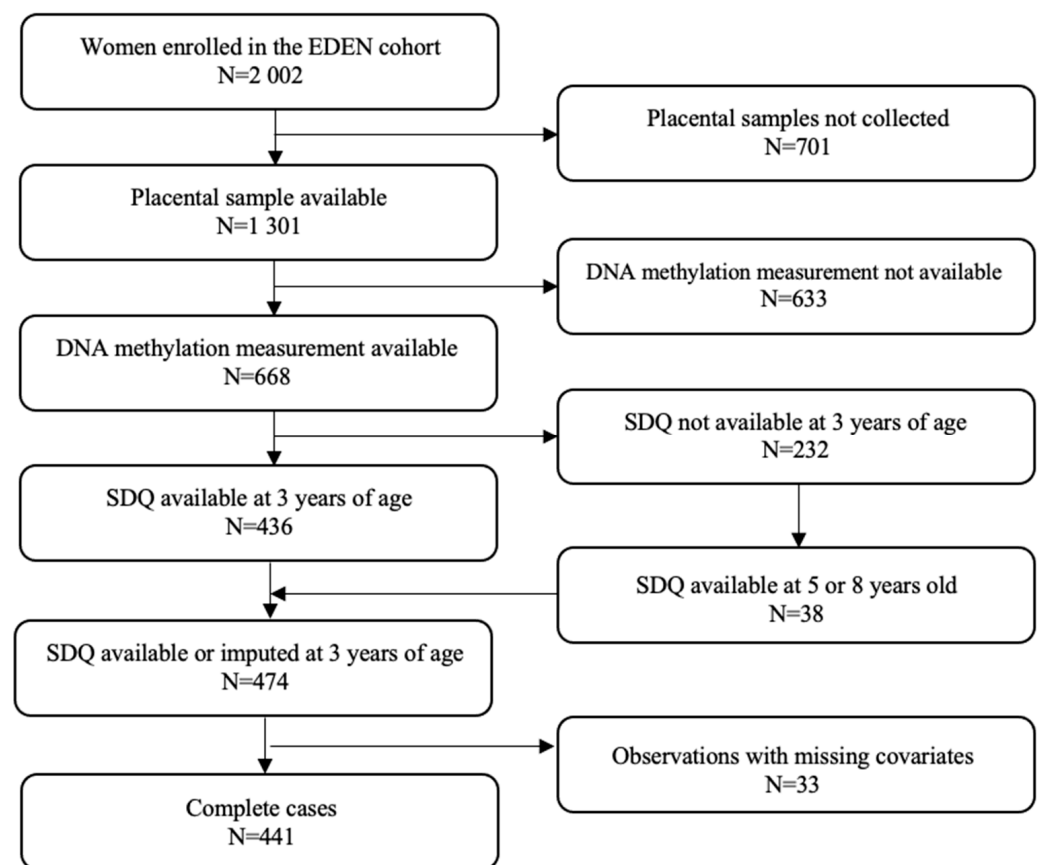


Figure 3. Flow chart of the study; SDQ: Strengths and Difficulties Questionnaire.

4.2. Child's Emotional and Behavioral Difficulties at 3 Years of Age

The child's behavioral and emotional difficulties were assessed by mothers using the French version of the Strengths and Difficulties Questionnaire (SDQ). Translated into several languages, the SDQ is a validated screening tool for emotional and behavioral problems in children and adolescents from 3 years of age [80,83]. The SDQ includes 25 items divided into 5 subscales of 5 items each: one positive subscale covering pro-social behavior (not included in our analyses) and four negative subscales involving conduct problems, hyperactivity/inattention, emotional symptoms, and peer relationship problems. Each subscale is scored from 0 to 10. The addition of the 4 negative subscales generates a total difficulties score ranging from 0 to 40. In accordance with the general instructions of the use of the SDQ [84], internalizing symptoms were defined as the sum of emotional symptoms and peer relationship problems subscales (score varying from 0 to 20) and externalizing symptoms as the sum of conduct problems and hyperactivity/inattention subscales (score varying from 0 to 20) [83]. All the subscales we used in our analyses are summarized in Figure 1. As trends in child behavior appear to be stable over time [1], including in EDEN [85], missing values for child SDQ at 3 years of age were imputed, when available, by the one measured at 5 or 8 years of age ($N = 38$, Figure 3).

4.3. Placental DNA Methylation Levels

Placental biopsies were collected at the fetal side of each placenta at delivery by the midwife or the technician of the study using a standardized procedure. DNA extraction and methylation assessment were previously described elsewhere [16]. Briefly, DNA concentration was determined by Nanodrop measurement and fluorescent quantification using Picogreen by the Centre National de Recherche en Génomique Humaine (CNRGH, Evry, France). DNA samples were plated onto nine plates, including 64 chips, that were analyzed in 4 batches. Each chip was balanced according to child sex and recruitment

center. The Illumina's Infinium HumanMethylation450 (450 K) BeadChip, which represents over 485,000 individual CpG sites, was used to assess the levels of methylation in placenta samples, following the manufacturer's instructions (Illumina, San Diego, CA, USA). Raw signals were extracted using the GenomeStudio[®] software (version 2011.1. Illumina). For each CpG, DNA methylation level was calculated as the ratio of the intensity of fluorescent signals of the methylated alleles over the sum of methylated and unmethylated alleles (β value, ranging from 0 (unmethylated) to 1 (fully methylated)). All samples passed initial quality control and had, on average, more than 98% of valid data points (detection p -value < 0.01). DNA methylation data were corrected and normalized using a Beta Mixture Quantile (BMIQ) normalization method, which corrects for probe type differences [86].

4.4. Covariates

Covariates were a priori identified based on a literature review and a Directed Acyclic Graph (DAG) and included: the mother's age at conception (as a continuous variable), mother's ethnicity (Caucasian; Other—estimated using the planet R package version 1.8.0 [87]), parity (0; ≥ 1 other child), maternal educational attainment (≤ 20 ; > 20 years old), adverse events during pregnancy (none; at least one among fourteen adverse events including separation or divorce; death or serious illness of a close friend or a family member; being evicted from accommodation; deal with a fire, a flood or a major disaster in the dwelling; being involved in a serious traffic accident; losing job; legal issues; having a partner facing: job loss; legal issues; alcohol-related problem; as well as being hit or brutalized; forced to have sexual intercourses or being harassed by the partner or finally have faced another disturbing event). Covariates also included depressive symptoms during pregnancy, assessed via the Centre for Epidemiological Studies Depression (CES-D) questionnaire at 24 weeks of amenorrhea [88], using a cut-off of 16 and above [89], maternal tobacco exposure during pregnancy (no exposure; passive smoking; mother smoking), child sex (boy; girl), technical factors related to DNAm measurements: batch, plate, and chip (Supplementary Figure S2).

4.5. Cellular Heterogeneity of Placenta Samples

DNA methylation levels differ among cell types within the placenta [90]. Some proportion of the DNA methylation variability observed across samples may be due to the interindividual heterogeneity of the placenta samples. Reference-based [91] placental cellular composition was estimated using DNA methylation data based on Yuan's method, implemented in the planet R package version 1.8.0 [77,87]. Briefly, using their results as reference methylation profiles of the six major human term placental cell types (Endothelial, Hofbauer, nRBC, Stromal, Syncytiotrophoblast, and Trophoblasts), the cellular composition was estimated in our data using a Robust Partial Correlations (RPC) cell-type deconvolution algorithm implemented in the R package EpiDISH version 2.16.0.

4.6. Statistical Analyses

A workflow of all the statistical analyses is provided in Figure 4. Conduct problems, hyperactivity/inattention, externalizing symptoms, and total difficulties SDQ subscales were modeled using quasi-Poisson regressions due to their right-skewed distributions and overdispersion [92] whereas emotional symptoms, peer relationship problems, and internalizing subscales were modeled using a negative binomial regression because of the excess of zeros. Multivariate regressions were adjusted for the covariates listed above in addition to cellular composition and stratified by child sex. As few mother-child dyads had few missing values on covariates (7%), we decided not to impute missing data.

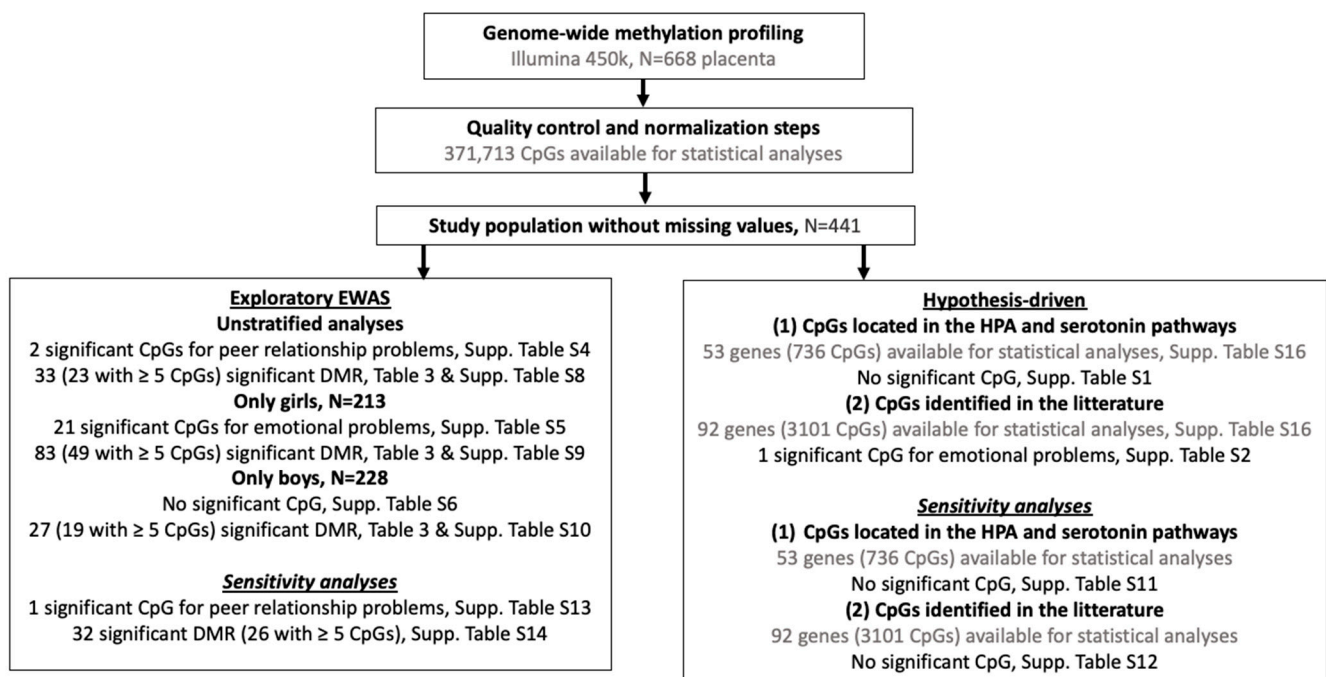


Figure 4. Workflow of the study; EWAS = epigenome-wide association study; DMR = differentially methylated region; Significance at $p\text{FDR} < 0.05$ for the hypothesis-driven and EWAS and $p\text{Sidak} < 0.05$ for the DMR analyses.

Hypothesis-driven analyses were based on: (i) 53 genes (corresponding to 736 CpGs) identified to be involved in the hypothalamic-pituitary-adrenal axis (HPA) [93] and the dopamine and serotonin [94] dysregulation in relation to neurodevelopmental disorders (ii) 92 genes (3 101 CpGs) associated with child neurodevelopment in previous hypothesis-driven and epigenome-wide studies (Supplementary Table S16). The p -values were given with a correction for multiple testing using the Benjamini and Hochberg false discovery rate (FDR) procedure [95]. An FDR value < 0.05 was considered statistically significant.

In parallel, we carried out an exploratory epigenome-wide association study (EWAS) unstratified and stratified by child sex. Analyses were performed on a total of 371,713 CpGs that passed quality control, with the aim of discovering new genes/genomic regions where placental DNA methylation is associated with child behavioral and emotional difficulties. CpGs located on X and Y chromosomes were excluded. For the EWAS approach, p -values were corrected for multiple testing using the FDR procedure. An FDR value < 0.05 was considered statistically significant. Differentially methylated regions (DMR) were identified using the comb-p method [96]. These regional analyses allow a gain in statistical power to detect changes in DNAm versus single CpG site analyses [97]. The p -values obtained by the EWAS analyses were combined using sliding windows that account for spatial correlations across the genome using Stouffer-Liptak-Kechris correction [98]. DMR's p -values were adjusted for multiple testing using the Šidác correction [99], with a threshold of 0.05. Significant DMRs included at least two probes (p -value < 0.001 to start a region) at a maximum distance of 500 bp. Probes and DMRs were characterized using the GeneCards Human Gene Database [100].

4.7. Sensitivity Analyses

Whether interindividual variation in methylation levels is dependent or independent of cellular heterogeneity is impossible to distinguish [74]. Therefore, we conducted a sensitivity analysis replicating both hypothesis-driven and epigenome wide analyses on each SDQ subscale without adjustment for cellular composition.

4.8. Softwares

All the statistical analyses were conducted using R Studio 1.3.1093 version (PBC, Boston, MA, USA). Quasi-Poisson and negative binomial regressions were computed using the `glm` and `glm.nb` functions from the `Stats` and `MASS` (version 7.3-60) R packages, respectively. DMR analyses were computed using the `comb-p` method [96], implemented in the `ENmix` R package version 1.36.01.

5. Conclusions

In this study, we showed that among girls, placental DNA methylation was mostly associated with internalizing symptoms, both at an individual CpG and at a regional level, whereas in boys, DMRs were as much associated with internalizing than externalizing symptoms. Our results further suggest sex-specific associations between placental DNA methylation and child emotional and behavioral difficulties. Further analyses would be necessary to confirm our results.

Supplementary Materials: The supporting information can be downloaded at: <https://www.mdpi.com/article/10.3390/ijms241411772/s1>.

Author Contributions: Conceptualization, J.L. and A.N.; methodology, J.L., A.N., and L.B.; validation, D.V., J.T., and L.B.; formal analysis, A.N. and L.B.; investigation, A.N. and J.L.; writing—original draft preparation, A.N. and J.L.; writing—review and editing, all the authors; supervision, J.L.; project administration, J.L. and M.M.; funding acquisition, M.M., J.L., S.M., K.K., K.S.-L., and B.H. All authors have read and agreed to the published version of the manuscript.

Funding: A.N. is supported by a grant from IReSP and INCa in the context of the Research program and interventions to reduce and fight against tobacco consumption, grant IRESP-19-TABAC-V1-01. This research was further funded by IReSP and INCa in the context of the research program and interventions to reduce and fight against tobacco consumption, grant INCa_13641, and by the French Agency for National Research, grant ANR-18-CE36-0005. The EDEN study was supported by Foundation for medical research (FRM), National Agency for Research (ANR), National Institute for Research in Public health (IRESP: TGIR cohorte santé 2008 program), French Ministry of Health (DGS), French Ministry of Research, INSERM Bone and Joint Diseases National Research (PRO-A), and Human Nutrition National Research Programs, Paris-Sud University, Nestlé, French National Institute for Population Health Surveillance (InVS), French National Institute for Health Education (INPES), the European Union FP7 programs (FP7/2007–2013, HELIX, ESCAPE, ENRIECO, Medall projects), Diabetes National Research Program (through a collaboration with the French Association of Diabetic Patients (AFD)), French Agency for Environmental Health Safety (now ANSES), Mutuelle Générale de l'Éducation Nationale complementary health insurance (MGEN), French national agency for food security, French-speaking association for the study of diabetes and metabolism (ALFEDIAM).

Institutional Review Board Statement: The EDEN cohort study received approval from the ethics committee (CCPPRB) of Kremlin Bicêtre and from the French data privacy institution Commission Nationale de l'Informatique et des Libertés (CNIL). Written consent was obtained from the mother for herself and for the offspring.

Informed Consent Statement: Informed consent was obtained from all subjects involved in the study.

Data Availability Statement: The data presented in this study are available on request from etude.eden@inserm.fr.

Acknowledgments: The authors thank the EDEN mother–child cohort study group, whose members are: I. Annesi-Maesano, J.Y. Bernard, M.A. Charles, P. Dargent-Molina, B. de Lauzon-Guillain, P. Ducimetière, M. de Agostini, B. Foliguet, A. Forhan, X. Fritel, A. Germa, V. Goua, R. Hankard, B. Heude, M. Kaminski, B. Larroquey, N. Lelong, J. Lepeule, G. Magnin, L. Marchand, C. Nabet, F. Pierre, R. Slama, M.J. Saurel-Cubizolles, M. Schweitzer, and O. Thiebaugeorges.

Conflicts of Interest: The authors declare no conflict of interest.

References

1. Bagner, D.M.; Rodríguez, G.M.; Blake, C.A.; Linares, D.; Carter, A.S. Assessment of Behavioral and Emotional Problems in Infancy: A Systematic Review. *Clin. Child Fam. Psychol. Rev.* **2012**, *15*, 113–128. [[CrossRef](#)] [[PubMed](#)]
2. Ogundele, M.O. Behavioural and Emotional Disorders in Childhood: A Brief Overview for Paediatricians. *World J. Clin. Pediatr.* **2018**, *7*, 9. [[CrossRef](#)] [[PubMed](#)]
3. Barican, J.L.; Yung, D.; Schwartz, C.; Zheng, Y.; Georgiades, K.; Waddell, C. Prevalence of Childhood Mental Disorders in High-Income Countries: A Systematic Review and Meta-Analysis to Inform Policymaking. *Evid.-Based Ment. Health* **2022**, *25*, 36–44. [[CrossRef](#)]
4. Centers for Disease Control and Prevention. Data and Statistics on Children’s Mental Health. *Cent. Dis. Control Prev.* **2019**, *13*, 2019.
5. Barker, D.J. The Origins of the Developmental Origins Theory. *J. Intern. Med.* **2007**, *261*, 412–417. [[CrossRef](#)] [[PubMed](#)]
6. Scher, M.S. “The First Thousand Days” Define a Fetal/Neonatal Neurology Program. *Front. Pediatr.* **2021**, *9*, 683138. [[CrossRef](#)]
7. Selevan, S.G.; Kimmel, C.A.; Mendola, P. Identifying Critical Windows of Exposure for Children’s Health. *Environ. Health Perspect.* **2000**, *108*, 451–455.
8. Victora, C.G.; De Onis, M.; Hallal, P.C.; Blössner, M.; Shrimpton, R. Worldwide Timing of Growth Faltering: Revisiting Implications for Interventions. *Pediatrics* **2010**, *125*, e473–e480. [[CrossRef](#)]
9. Guilbert, A.; Rolland, M.; Pin, I.; Thomsen, C.; Sakhi, A.K.; Sabaredzovic, A.; Slama, R.; Guichardet, K.; Philippat, C. Associations between a Mixture of Phenols and Phthalates and Child Behaviour in a French Mother–Child Cohort with Repeated Assessment of Exposure. *Environ. Int.* **2021**, *156*, 106697. [[CrossRef](#)]
10. Jedynak, P.; Maitre, L.; Guxens, M.; Gützkow, K.B.; Julvez, J.; López-Vicente, M.; Sunyer, J.; Casas, M.; Chatzi, L.; Gražulevičienė, R. Prenatal Exposure to a Wide Range of Environmental Chemicals and Child Behaviour between 3 and 7 Years of Age—An Exposome-Based Approach in 5 European Cohorts. *Sci. Total Environ.* **2021**, *763*, 144115. [[CrossRef](#)]
11. Maitre, L.; Julvez, J.; López-Vicente, M.; Warembourg, C.; Tamayo-Uria, I.; Philippat, C.; Gützkow, K.B.; Guxens, M.; Andrusaityte, S.; Basagaña, X. Early-Life Environmental Exposure Determinants of Child Behavior in Europe: A Longitudinal, Population-Based Study. *Environ. Int.* **2021**, *153*, 106523. [[CrossRef](#)] [[PubMed](#)]
12. Fekom, M.; Bonello, K.; Gomajee, R.; Ibanez, G.; Martin, S.; Keyes, K.; Nakamura, A.; Lepeule, J.; Strandberg-Larsen, K.; Melchior, M. Smoking during Pregnancy and Children’s Emotional and Behavioural Trajectories: Mathilde Fekom. *Eur. J. Public Health* **2022**, *32*, ckac129–669. [[CrossRef](#)]
13. Tsang, T.W.; Lucas, B.R.; Carmichael Olson, H.; Pinto, R.Z.; Elliott, E.J. Prenatal Alcohol Exposure, FASD, and Child Behavior: A Meta-Analysis. *Pediatrics* **2016**, *137*, e20152542. [[CrossRef](#)]
14. Van Der Waerden, J.; Galéra, C.; Larroque, B.; Saurel-Cubizolles, M.-J.; Sutter-Dallay, A.-L.; Melchior, M.; EDEN Mother–Child Cohort Study Group. Maternal Depression Trajectories and Children’s Behavior at Age 5 Years. *J. Pediatr.* **2015**, *166*, 1440–1448. [[CrossRef](#)] [[PubMed](#)]
15. Turco, M.Y.; Moffett, A. Development of the Human Placenta. *Development* **2019**, *146*, dev163428. [[CrossRef](#)] [[PubMed](#)]
16. Abraham, E.; Rousseaux, S.; Agier, L.; Giorgis-Allemand, L.; Tost, J.; Galigneau, J.; Hulin, A.; Siroux, V.; Vaiman, D.; Charles, M.-A. Pregnancy Exposure to Atmospheric Pollution and Meteorological Conditions and Placental DNA Methylation. *Environ. Int.* **2018**, *118*, 334–347. [[CrossRef](#)]
17. Broséus, L.; Vaiman, D.; Tost, J.; Martin, C.R.S.; Jacobi, M.; Schwartz, J.D.; Béranger, R.; Slama, R.; Heude, B.; Lepeule, J. Maternal Blood Pressure Associates with Placental DNA Methylation Both Directly and through Alterations in Cell-Type Composition. *BMC Med.* **2022**, *20*, 397. [[CrossRef](#)]
18. Heijmans, B.T.; Tobi, E.W.; Lumey, L.; Slagboom, P.E. The Epigenome: Archive of the Prenatal Environment. *Epigenetics* **2009**, *4*, 526–531. [[CrossRef](#)]
19. Jedynak, P.; Tost, J.; Calafat, A.M.; Bourova-Flin, E.; Busato, F.; Forhan, A.; Heude, B.; Jakobi, M.; Rousseaux, S.; Schwartz, J. Pregnancy Exposure to Synthetic Phenols and Placental DNA Methylation—An Epigenome-Wide Association Study in Male Infants from the EDEN Cohort. *Environ. Pollut.* **2021**, *290*, 118024. [[CrossRef](#)]
20. Nakamura, A.; François, O.; Lepeule, J. Epigenetic Alterations of Maternal Tobacco Smoking during Pregnancy: A Narrative Review. *Int. J. Environ. Res. Public Health* **2021**, *18*, 5083. [[CrossRef](#)]
21. Rousseaux, S.; Seyve, E.; Chuffart, F.; Bourova-Flin, E.; Benmerad, M.; Charles, M.-A.; Forhan, A.; Heude, B.; Siroux, V.; Slama, R. Immediate and Durable Effects of Maternal Tobacco Consumption Alter Placental DNA Methylation in Enhancer and Imprinted Gene-Containing Regions. *BMC Med.* **2020**, *18*, 306. [[CrossRef](#)] [[PubMed](#)]
22. Lesseur, C.; Armstrong, D.A.; Murphy, M.A.; Appleton, A.A.; Koestler, D.C.; Paquette, A.G.; Lester, B.M.; Marsit, C.J. Sex-Specific Associations between Placental Leptin Promoter DNA Methylation and Infant Neurobehavior. *Psychoneuroendocrinology* **2014**, *40*, 1–9. [[CrossRef](#)] [[PubMed](#)]
23. Marsit, C.J.; Maccani, M.A.; Padbury, J.F.; Lester, B.M. Placental 11-Beta Hydroxysteroid Dehydrogenase Methylation Is Associated with Newborn Growth and a Measure of Neurobehavioral Outcome. *PLoS ONE* **2012**, *7*, e33794. [[CrossRef](#)] [[PubMed](#)]
24. Rosenfeld, C.S. The Placenta-brain-axis. *J. Neurosci. Res.* **2021**, *99*, 271–283. [[CrossRef](#)] [[PubMed](#)]
25. Zeltser, L.M.; Leibel, R.L. Roles of the Placenta in Fetal Brain Development. *Proc. Natl. Acad. Sci. USA* **2011**, *108*, 15667–15668. [[CrossRef](#)]
26. Jensen Peña, C.L.; Champagne, F.A. Epigenetic and Neurodevelopmental Perspectives on Variation in Parenting Behavior. *Parenting* **2012**, *12*, 202–211. [[CrossRef](#)]

27. Bonnini, A.; Levitt, P. Fetal, Maternal, and Placental Sources of Serotonin and New Implications for Developmental Programming of the Brain. *Neuroscience* **2011**, *197*, 1–7. [[CrossRef](#)]
28. Novakovic, B.; Ryan, J.; Pereira, N.; Boughton, B.; Craig, J.M.; Saffery, R. Postnatal Stability, Tissue, and Time Specific Effects of AHRR Methylation Change in Response to Maternal Smoking in Pregnancy. *Epigenetics* **2014**, *9*, 377–386. [[CrossRef](#)]
29. Appleton, A.A.; Lester, B.M.; Armstrong, D.A.; Lesueur, C.; Marsit, C.J. Examining the Joint Contribution of Placental NR3C1 and HSD11B2 Methylation for Infant Neurobehavior. *Psychoneuroendocrinology* **2015**, *52*, 32–42. [[CrossRef](#)]
30. Breton, E.; Gagné-Ouellet, V.; Thibeault, K.; Guérin, R.; Van Lieshout, R.; Perron, P.; Hivert, M.; Bouchard, L. Placental NEGR1 DNA Methylation Is Associated with BMI and Neurodevelopment in Preschool-Age Children. *Epigenetics* **2020**, *15*, 323–335. [[CrossRef](#)]
31. Bromer, C.; Marsit, C.J.; Armstrong, D.A.; Padbury, J.F.; Lester, B. Genetic and Epigenetic Variation of the Glucocorticoid Receptor (NR3C1) in Placenta and Infant Neurobehavior. *Dev. Psychobiol.* **2013**, *55*, 673–683. [[CrossRef](#)]
32. Paquette, A.G.; Lester, B.M.; Lesueur, C.; Armstrong, D.A.; Guerin, D.J.; Appleton, A.A.; Marsit, C.J. Placental Epigenetic Patterning of Glucocorticoid Response Genes Is Associated with Infant Neurodevelopment. *Epigenomics* **2015**, *7*, 767–779. [[CrossRef](#)]
33. Paquette, A.G.; Houseman, E.A.; Green, B.B.; Lesueur, C.; Armstrong, D.A.; Lester, B.; Marsit, C.J. Regions of Variable DNA Methylation in Human Placenta Associated with Newborn Neurobehavior. *Epigenetics* **2016**, *11*, 603–613. [[CrossRef](#)]
34. Stroud, L.R.; Papandonatos, G.D.; Salisbury, A.L.; Phipps, M.G.; Huestis, M.A.; Niaura, R.; Padbury, J.F.; Marsit, C.J.; Lester, B.M. Epigenetic Regulation of Placental NR3C1: Mechanism Underlying Prenatal Programming of Infant Neurobehavior by Maternal Smoking? *Child Dev.* **2016**, *87*, 49–60. [[CrossRef](#)]
35. Zhu, Y.; Mordaunt, C.E.; Yasui, D.H.; Marathe, R.; Coulson, R.L.; Dunaway, K.W.; Jianu, J.M.; Walker, C.K.; Ozonoff, S.; Hertz-Picciotto, I. Placental DNA Methylation Levels at CYP2E1 and IRS2 Are Associated with Child Outcome in a Prospective Autism Study. *Hum. Mol. Genet.* **2019**, *28*, 2659–2674. [[CrossRef](#)]
36. Holmes, M.C.; Abrahamsen, C.T.; French, K.L.; Paterson, J.M.; Mullins, J.J.; Seckl, J.R. The Mother or the Fetus? 11 β -Hydroxysteroid Dehydrogenase Type 2 Null Mice Provide Evidence for Direct Fetal Programming of Behavior by Endogenous Glucocorticoids. *J. Neurosci.* **2006**, *26*, 3840–3844.
37. Wyrwoll, C.S.; Holmes, M.C. Prenatal Excess Glucocorticoid Exposure and Adult Affective Disorders: A Role for Serotonergic and Catecholamine Pathways. *Neuroendocrinology* **2012**, *95*, 47–55. [[CrossRef](#)]
38. Andrews, S.V.; Yang, I.J.; Froehlich, K.; Oskotsky, T.; Sirota, M. Large-Scale Placenta DNA Methylation Integrated Analysis Reveals Fetal Sex-Specific Differentially Methylated CpG Sites and Regions. *Sci. Rep.* **2022**, *12*, 9396. [[CrossRef](#)]
39. Kaczurkin, A.N.; Raznahan, A.; Satterthwaite, T.D. Sex Differences in the Developing Brain: Insights from Multimodal Neuroimaging. *Neuropsychopharmacology* **2019**, *44*, 71–85. [[CrossRef](#)]
40. Polanczyk, G.; De Lima, M.S.; Horta, B.L.; Biederman, J.; Rohde, L.A. The Worldwide Prevalence of ADHD: A Systematic Review and Meta-regression Analysis. *Am. J. Psychiatry* **2007**, *164*, 942–948. [[CrossRef](#)]
41. Caramaschi, D.; Neumann, A.; Cardenas, A.; Tindula, G.; Alemany, S.; Zillich, L.; Pesce, G.; Lahti, J.M.; Havdahl, A.; Mulder, R. Meta-Analysis of Epigenome-Wide Associations between DNA Methylation at Birth and Childhood Cognitive Skills. *Mol. Psychiatry* **2022**, *27*, 2126–2135. [[CrossRef](#)] [[PubMed](#)]
42. Cardenas, A.; Rifas-Shiman, S.L.; Agha, G.; Hivert, M.-F.; Litonjua, A.A.; DeMeo, D.L.; Lin, X.; Amarasiriwardena, C.J.; Oken, E.; Gillman, M.W. Persistent DNA Methylation Changes Associated with Prenatal Mercury Exposure and Cognitive Performance during Childhood. *Sci. Rep.* **2017**, *7*, 288. [[CrossRef](#)] [[PubMed](#)]
43. Cecil, C.A.; Walton, E.; Jaffee, S.R.; O'Connor, T.; Maughan, B.; Relton, C.L.; Smith, R.G.; McArdle, W.; Gaunt, T.R.; Ouellet-Morin, I. Neonatal DNA Methylation and Early-Onset Conduct Problems: A Genome-Wide, Prospective Study. *Dev. Psychopathol.* **2018**, *30*, 383–397. [[CrossRef](#)]
44. Hodyl, N.A.; Roberts, C.T.; Bianco-Miotto, T. Cord Blood DNA Methylation Biomarkers for Predicting Neurodevelopmental Outcomes. *Genes* **2016**, *7*, 117. [[CrossRef](#)]
45. Rijlaarsdam, J.; Barker, E.D.; Caserini, C.; Koopman-Verhoeff, M.E.; Mulder, R.H.; Felix, J.F.; Cecil, C.A. Genome-Wide DNA Methylation Patterns Associated with General Psychopathology in Children. *J. Psychiatr. Res.* **2021**, *140*, 214–220. [[CrossRef](#)]
46. Everson, T.M.; Vives-Usano, M.; Seyve, E.; Cardenas, A.; Lacasaña, M.; Craig, J.M.; Lesueur, C.; Baker, E.R.; Fernandez-Jimenez, N.; Heude, B. Placental DNA Methylation Signatures of Maternal Smoking during Pregnancy and Potential Impacts on Fetal Growth. *Nat. Commun.* **2021**, *12*, 5095. [[CrossRef](#)]
47. Joubert, B.R.; Håberg, S.E.; Nilsen, R.M.; Wang, X.; Vollset, S.E.; Murphy, S.K.; Huang, Z.; Hoyo, C.; Middtun, Ø.; Cupul-Uicab, L.A. 450K Epigenome-Wide Scan Identifies Differential DNA Methylation in Newborns Related to Maternal Smoking during Pregnancy. *Environ. Health Perspect.* **2012**, *120*, 1425–1431. [[CrossRef](#)]
48. Joubert, B.R.; Felix, J.F.; Yousefi, P.; Bakulski, K.M.; Just, A.C.; Breton, C.; Reese, S.E.; Markunas, C.A.; Richmond, R.C.; Xu, C.-J. DNA Methylation in Newborns and Maternal Smoking in Pregnancy: Genome-Wide Consortium Meta-Analysis. *Am. J. Hum. Genet.* **2016**, *98*, 680–696. [[CrossRef](#)] [[PubMed](#)]
49. Knopik, V.S.; Marceau, K.; Bidwell, L.C.; Rolan, E. Prenatal Substance Exposure and Offspring Development: Does DNA Methylation Play a Role? *Neurotoxicol. Teratol.* **2019**, *71*, 50–63. [[CrossRef](#)]
50. Katrinli, S.; Maihofer, A.X.; Wani, A.H.; Pfeiffer, J.R.; Ketema, E.; Ratanatharathorn, A.; Baker, D.G.; Boks, M.P.; Geuze, E.; Kessler, R.C. Epigenome-Wide Meta-Analysis of PTSD Symptom Severity in Three Military Cohorts Implicates DNA Methylation Changes in Genes Involved in Immune System and Oxidative Stress. *Mol. Psychiatry* **2022**, *27*, 1720–1728. [[CrossRef](#)]

51. Smith, A.K.; Ratanatharathorn, A.; Maihofer, A.X.; Naviaux, R.K.; Aiello, A.E.; Amstadter, A.B.; Ashley-Koch, A.E.; Baker, D.G.; Beckham, J.C.; Boks, M.P. Epigenome-Wide Meta-Analysis of PTSD across 10 Military and Civilian Cohorts Identifies Methylation Changes in AHRR. *Nat. Commun.* **2020**, *11*, 5965. [[CrossRef](#)]
52. Brew, O.; Sullivan, M.H.; Woodman, A. Comparison of Normal and Pre-Eclamptic Placental Gene Expression: A Systematic Review with Meta-Analysis. *PLoS ONE* **2016**, *11*, e0161504. [[CrossRef](#)] [[PubMed](#)]
53. Eckmann, M.; Sheng, Q.; Baldwin, S.; Lister, R.L. Maternal Hyperglycemia Induces Changes in Gene Expression and Morphology in Mouse Placentas. *Gynecol. Reprod. Health* **2020**, *4*, 1–15. [[CrossRef](#)] [[PubMed](#)]
54. Clarkson-Townsend, D.A.; Everson, T.M.; Deyssenroth, M.A.; Burt, A.A.; Hermetz, K.E.; Hao, K.; Chen, J.; Marsit, C.J. Maternal Circadian Disruption Is Associated with Variation in Placental DNA Methylation. *PLoS ONE* **2019**, *14*, e0215745. [[CrossRef](#)] [[PubMed](#)]
55. Alliance of Genome Resources Consortium. The Alliance of Genome Resources: Building a Modern Data Ecosystem for Model Organism Databases. *Genetics* **2019**, *213*, 1189–1196. [[CrossRef](#)] [[PubMed](#)]
56. Safran, M.; Dalah, I.; Alexander, J.; Rosen, N.; Iny Stein, T.; Shmoish, M.; Nativ, N.; Bahir, I.; Doniger, T.; Krug, H. GeneCards Version 3: The Human Gene Integrator. *Database* **2010**, *2010*, baq020. [[CrossRef](#)]
57. Hu, Y.; O'Boyle, K.; Auer, J.; Raju, S.; You, F.; Wang, P.; Fikrig, E.; Sutton, R.E. Multiple UBXN Family Members Inhibit Retrovirus and Lentivirus Production and Canonical NF κ B Signaling by Stabilizing I κ B α . *PLoS Pathog.* **2017**, *13*, e1006187. [[CrossRef](#)]
58. Tekola-Ayele, F.; Zeng, X.; Ouidir, M.; Workalemahu, T.; Zhang, C.; Delahaye, F.; Wapner, R. DNA Methylation Loci in Placenta Associated with Birthweight and Expression of Genes Relevant for Early Development and Adult Diseases. *Clin. Epigenet.* **2020**, *12*, 78. [[CrossRef](#)]
59. Chaplin, T.M.; Aldao, A. Gender Differences in Emotion Expression in Children: A Meta-Analytic Review. *Psychol. Bull.* **2013**, *139*, 735. [[CrossRef](#)]
60. Bozack, A.K.; Colicino, E.; Just, A.C.; Wright, R.O.; Baccarelli, A.A.; Wright, R.J.; Lee, A.G. Associations between Infant Sex and DNA Methylation across Umbilical Cord Blood, Artery, and Placenta Samples. *Epigenetics* **2021**, *17*, 1080–1097. [[CrossRef](#)]
61. Inkster, A.M.; Yuan, V.; Konwar, C.; Matthews, A.M.; Brown, C.J.; Robinson, W.P. A Cross-Cohort Analysis of Autosomal DNA Methylation Sex Differences in the Term Placenta. *Biol. Sex Differ.* **2021**, *12*, 38. [[CrossRef](#)]
62. Martin, E.; Smeester, L.; Bommarito, P.A.; Grace, M.R.; Boggess, K.; Kuban, K.; Karagas, M.R.; Marsit, C.J.; O'Shea, T.M.; Fry, R.C. Sexual Epigenetic Dimorphism in the Human Placenta: Implications for Susceptibility during the Prenatal Period. *Epigenomics* **2017**, *9*, 267–278. [[CrossRef](#)]
63. López-Ojeda, W.; Hurley, R.A. Sexual Dimorphism in Brain Development: Influence on Affective Disorders. *J. Neuropsychiatry Clin. Neurosci.* **2021**, *33*, A4–85. [[CrossRef](#)]
64. Pallayova, M.; Brandeburova, A.; Tokarova, D. Update on Sexual Dimorphism in Brain Structure–Function Interrelationships: A Literature Review. *Appl. Psychophysiol. Biofeedback* **2019**, *44*, 271–284. [[CrossRef](#)]
65. Gabory, A.; Attig, L.; Junien, C. Developmental Programming and Epigenetics. *Am. J. Clin. Nutr.* **2011**, *94*, 1943S–1952S. [[CrossRef](#)]
66. Rosenfeld, C.S.; Trainor, B.C. Environmental Health Factors and Sexually Dimorphic Differences in Behavioral Disruptions. *Curr. Environ. Health Rep.* **2014**, *1*, 287–301. [[CrossRef](#)]
67. Bronson, S.L.; Bale, T.L. The Placenta as a Mediator of Stress Effects on Neurodevelopmental Reprogramming. *Neuropsychopharmacology* **2016**, *41*, 207–218. [[CrossRef](#)]
68. Burton, G.J.; Fowden, A.L.; Thornburg, K.L. Placental Origins of Chronic Disease. *Physiol. Rev.* **2016**, *96*, 1509–1565. [[CrossRef](#)]
69. Everson, T.; Vives-Usano, M.; Craig, J.; Hivert, M.; Karagas, M.; Lacasaña, M.; Lepeule, J.; Marsit, C.; Bustamante, M. Placental Methylation Signatures from Maternal Smoking during Pregnancy and Potential Impacts on Fetal Growth: Meta-Analyses from 7 Cohorts. *Environ. Epidemiol.* **2019**, *3*, 115.
70. Niculescu, A.; Levey, D.; Phalen, P.; Le-Niculescu, H.; Dainton, H.; Jain, N.; Belanger, E.; James, A.; George, S.; Weber, H. Understanding and Predicting Suicidality Using a Combined Genomic and Clinical Risk Assessment Approach. *Mol. Psychiatry* **2015**, *20*, 1266–1285. [[CrossRef](#)]
71. Lionel, A.C.; Crosbie, J.; Barbosa, N.; Goodale, T.; Thiruvahindrapuram, B.; Rickaby, J.; Gazzellone, M.; Carson, A.R.; Howe, J.L.; Wang, Z. Rare Copy Number Variation Discovery and Cross-Disorder Comparisons Identify Risk Genes for ADHD. *Sci. Transl. Med.* **2011**, *3*, 95ra75. [[CrossRef](#)]
72. Sikdar, S.; Joehanes, R.; Joubert, B.R.; Xu, C.-J.; Vives-Usano, M.; Rezwani, F.I.; Felix, J.F.; Ward, J.M.; Guan, W.; Richmond, R.C. Comparison of Smoking-Related DNA Methylation between Newborns from Prenatal Exposure and Adults from Personal Smoking. *Epigenomics* **2019**, *11*, 1487–1500. [[CrossRef](#)] [[PubMed](#)]
73. Qiu, W.; Wan, E.; Morrow, J.; Cho, M.H.; Crapo, J.D.; Silverman, E.K.; DeMeo, D.L. The Impact of Genetic Variation and Cigarette Smoke on DNA Methylation in Current and Former Smokers from the COPD Gene Study. *Epigenetics* **2015**, *10*, 1064–1073. [[CrossRef](#)] [[PubMed](#)]
74. Holbrook, J.D.; Huang, R.-C.; Barton, S.J.; Saffery, R.; Lillycrop, K.A. Is Cellular Heterogeneity Merely a Confounder to Be Removed from Epigenome-Wide Association Studies? *Epigenomics* **2017**, *9*, 1143–1150. [[CrossRef](#)]
75. Konwar, C.; Del Gobbo, G.F.; Terry, J.; Robinson, W.P. Association of a Placental Interleukin-6 Genetic Variant (Rs1800796) with DNA Methylation, Gene Expression and Risk of Acute Chorioamnionitis. *BMC Med. Genet.* **2019**, *20*, 36. [[CrossRef](#)] [[PubMed](#)]
76. Houseman, E.A.; Kile, M.L.; Christiani, D.C.; Ince, T.A.; Kelsey, K.T.; Marsit, C.J. Reference-Free Deconvolution of DNA Methylation Data and Mediation by Cell Composition Effects. *BMC Bioinform.* **2016**, *17*, 259. [[CrossRef](#)] [[PubMed](#)]

77. Yuan, V.; Hui, D.; Yin, Y.; Peñaherrera, M.S.; Beristain, A.G.; Robinson, W.P. Cell-Specific Characterization of the Placental Methylome. *BMC Genom.* **2021**, *22*, 6. [[CrossRef](#)]
78. Dieckmann, L.; Cruceanu, C.; Lahti-Pulkkinen, M.; Lahti, J.; Kvist, T.; Laivuori, H.; Sammallahti, S.; Villa, P.M.; Suomalainen-König, S.; Rancourt, R.C. Reliability of a Novel Approach for Reference-Based Cell Type Estimation in Human Placental DNA Methylation Studies. *Cell. Mol. Life Sci.* **2022**, *79*, 115. [[CrossRef](#)]
79. Yousefi, P.; Huen, K.; Davé, V.; Barcellos, L.; Eskenazi, B.; Holland, N. Sex Differences in DNA Methylation Assessed by 450 K BeadChip in Newborns. *BMC Genom.* **2015**, *16*, 911. [[CrossRef](#)]
80. Shojaei, T.; Wazana, A.; Pitrou, I.; Kovess, V. The Strengths and Difficulties Questionnaire: Validation Study in French School-Aged Children and Cross-Cultural Comparisons. *Soc. Psychiatry Psychiatr. Epidemiol.* **2009**, *44*, 740–747. [[CrossRef](#)]
81. Gustafsson, B.M.; Gustafsson, P.A.; Proczkowska-Björklund, M. The Strengths and Difficulties Questionnaire (SDQ) for Preschool Children—A Swedish Validation. *Nord. J. Psychiatry* **2016**, *70*, 567–574. [[CrossRef](#)] [[PubMed](#)]
82. Heude, B.; Forhan, A.; Slama, R.; Douhaud, L.; Bedel, S.; Saurel-Cubizolles, M.-J.; Hankard, R.; Thiebaugeorges, O.; De Agostini, M.; Annesi-Maesano, I. Cohort Profile: The EDEN Mother-Child Cohort on the Prenatal and Early Postnatal Determinants of Child Health and Development. *Int. J. Epidemiol.* **2016**, *45*, 353–363. [[CrossRef](#)] [[PubMed](#)]
83. Goodman, R. The Strengths and Difficulties Questionnaire: A Research Note. *J. Child Psychol. Psychiatry* **1997**, *38*, 581–586. [[CrossRef](#)]
84. Goodman, A.; Lamping, D.L.; Ploubidis, G.B. When to Use Broader Internalising and Externalising Subscales Instead of the Hypothesised Five Subscales on the Strengths and Difficulties Questionnaire (SDQ): Data from British Parents, Teachers and Children. *J. Abnorm. Child Psychol.* **2010**, *38*, 1179–1191. [[CrossRef](#)]
85. Gomajee, R.; El-Khoury, F.; Côté, S.; van der Waerden, J.; Pryor, L.; Melchior, M. Early Childcare Type Predicts Children’s Emotional and Behavioural Trajectories into Middle Childhood. Data from the EDEN Mother-Child Cohort Study. *J. Epidemiol. Community Health* **2018**, *72*, 1033–1043. [[CrossRef](#)]
86. Teschendorff, A.E.; Marabita, F.; Lechner, M.; Bartlett, T.; Tegner, J.; Gomez-Cabrero, D.; Beck, S. A Beta-Mixture Quantile Normalization Method for Correcting Probe Design Bias in Illumina Infinium 450 k DNA Methylation Data. *Bioinformatics* **2013**, *29*, 189–196. [[CrossRef](#)] [[PubMed](#)]
87. Yuan, V.; Price, E.M.; Del Gobbo, G.; Mostafavi, S.; Cox, B.; Binder, A.M.; Michels, K.B.; Marsit, C.; Robinson, W.P. Accurate Ethnicity Prediction from Placental DNA Methylation Data. *Epigenet. Chromatin* **2019**, *12*, 51. [[CrossRef](#)]
88. Radloff, L.S. The CES-D Scale: A Self-Report Depression Scale for Research in the General Population. *Appl. Psychol. Meas.* **1977**, *1*, 385–401. [[CrossRef](#)]
89. Vilagut, G.; Forero, C.G.; Barbaglia, G.; Alonso, J. Screening for Depression in the General Population with the Center for Epidemiologic Studies Depression (CES-D): A Systematic Review with Meta-Analysis. *PLoS ONE* **2016**, *11*, e0155431. [[CrossRef](#)]
90. Grigoriu, A.; Ferreira, J.C.; Choufani, S.; Baczyk, D.; Kingdom, J.; Weksberg, R. Cell Specific Patterns of Methylation in the Human Placenta. *Epigenetics* **2011**, *6*, 368–379. [[CrossRef](#)]
91. Teschendorff, A.E.; Breeze, C.E.; Zheng, S.C.; Beck, S. A Comparison of Reference-Based Algorithms for Correcting Cell-Type Heterogeneity in Epigenome-Wide Association Studies. *BMC Bioinform.* **2017**, *18*, 105. [[CrossRef](#)]
92. Pappa, I.; St Pourcain, B.; Benke, K.; Cavadino, A.; Hakulinen, C.; Nivard, M.G.; Nolte, I.M.; Tiesler, C.M.; Bakermans-Kranenburg, M.J.; Davies, G.E. A Genome-wide Approach to Children’s Aggressive Behavior: The EAGLE Consortium. *Am. J. Med. Genet. Part B Neuropsychiatr. Genet.* **2016**, *171*, 562–572. [[CrossRef](#)]
93. Gerritsen, L.; Milaneschi, Y.; Vinkers, C.H.; Van Hemert, A.M.; Van Velzen, L.; Schmaal, L.; Penninx, B.W. HPA Axis Genes, and Their Interaction with Childhood Maltreatment, Are Related to Cortisol Levels and Stress-Related Phenotypes. *Neuropsychopharmacology* **2017**, *42*, 2446–2455. [[CrossRef](#)] [[PubMed](#)]
94. Gao, X.; Liu, J.; Gong, P.; Wang, J.; Fang, W.; Yan, H.; Zhu, L.; Zhou, X. Identifying New Susceptibility Genes on Dopaminergic and Serotonergic Pathways for the Framing Effect in Decision-Making. *Soc. Cogn. Affect. Neurosci.* **2017**, *12*, 1534–1544. [[CrossRef](#)]
95. Benjamini, Y.; Hochberg, Y. Controlling the False Discovery Rate: A Practical and Powerful Approach to Multiple Testing. *J. R. Stat. Soc. Ser. B (Methodol.)* **1995**, *57*, 289–300. [[CrossRef](#)]
96. Pedersen, B.S.; Schwartz, D.A.; Yang, I.V.; Kechris, K.J. Comb-p: Software for Combining, Analyzing, Grouping and Correcting Spatially Correlated *p*-Values. *Bioinformatics* **2012**, *28*, 2986–2988. [[CrossRef](#)] [[PubMed](#)]
97. Robinson, M.D.; Kahraman, A.; Law, C.W.; Lindsay, H.; Nowicka, M.; Weber, L.M.; Zhou, X. Statistical Methods for Detecting Differentially Methylated Loci and Regions. *Front. Genet.* **2014**, *5*, 324. [[CrossRef](#)] [[PubMed](#)]
98. Kechris, K.J.; Biehs, B.; Kornberg, T.B. Generalizing Moving Averages for Tiling Arrays Using Combined *p*-Value Statistics. *Stat. Appl. Genet. Mol. Biol.* **2010**, *9*, 29. [[CrossRef](#)]
99. Šidák, Z. Rectangular Confidence Regions for the Means of Multivariate Normal Distributions. *J. Am. Stat. Assoc.* **1967**, *62*, 626–633. [[CrossRef](#)]
100. Stelzer, G.; Rosen, N.; Plaschkes, I.; Zimmerman, S.; Twik, M.; Fishilevich, S.; Stein, T.I.; Nudel, R.; Lieder, I.; Mazor, Y. The GeneCards Suite: From Gene Data Mining to Disease Genome Sequence Analyses. *Curr. Protoc. Bioinform.* **2016**, *54*, 1–30. [[CrossRef](#)]

Disclaimer/Publisher’s Note: The statements, opinions and data contained in all publications are solely those of the individual author(s) and contributor(s) and not of MDPI and/or the editor(s). MDPI and/or the editor(s) disclaim responsibility for any injury to people or property resulting from any ideas, methods, instructions or products referred to in the content.