



**HAL**  
open science

## **New method to characterize epidermal Ceramides by Supercritical Fluid Chromatography (SFC) coupled to High Resolution Mass (Q-Tof) : Application to various samples with skin barrier default.**

Justine Bertrand-Michel, Cyrielle Clement, Pauline Le Faouder, Julia Soullier, Carla Orlandi, Nathalie Jonca, Nuria Pell-Vidal

### **► To cite this version:**

Justine Bertrand-Michel, Cyrielle Clement, Pauline Le Faouder, Julia Soullier, Carla Orlandi, et al.. New method to characterize epidermal Ceramides by Supercritical Fluid Chromatography (SFC) coupled to High Resolution Mass (Q-Tof) : Application to various samples with skin barrier default.. Forum of lipidomics 2023, Aug 2023, Vienne (Austria), Austria. hal-04245640

**HAL Id: hal-04245640**

**<https://hal.science/hal-04245640>**

Submitted on 17 Oct 2023

**HAL** is a multi-disciplinary open access archive for the deposit and dissemination of scientific research documents, whether they are published or not. The documents may come from teaching and research institutions in France or abroad, or from public or private research centers.

L'archive ouverte pluridisciplinaire **HAL**, est destinée au dépôt et à la diffusion de documents scientifiques de niveau recherche, publiés ou non, émanant des établissements d'enseignement et de recherche français ou étrangers, des laboratoires publics ou privés.

# New method to characterize epidermal Ceramides by Supercritical Fluid Chromatography (SFC) coupled to High Resolution Mass (Q-ToF) : Application to various samples with skin barrier defect.

Cyrielle Clément<sup>1,2</sup>, Julia Soullier<sup>1,2</sup>, Roselyne Gautier<sup>1,3</sup>, Carla Orlandi<sup>1,3</sup>, Emilien Jamin<sup>1,3</sup>, H el ene Duplan<sup>4</sup>, Carine Jacques<sup>4</sup>, Nuria Pell Vidal<sup>5</sup>, Nathalie Jonca<sup>5</sup>, Pauline Le Faouder<sup>1,2</sup>, Justine Bertrand-Michel<sup>1,2</sup>  
<sup>1</sup>MetaboHUB-MetaToul, National Infrastructure of Metabolomics and Fluxomics, Toulouse, 31077, France, <sup>2</sup>I2MC, Universit e de Toulouse, Inserm, Universit e Toulouse III – Paul Sabatier (UPS), Toulouse, France., <sup>3</sup>Toxalim (Research Center in Food Toxicology), Universit e de Toulouse, INRAE, ENVT, INP-Purpan, Toulouse, France, <sup>4</sup>Centre de R&D Pierre Fabre - Centre de Recherche Pierre Fabre, <sup>5</sup>INSERM, Infinity - Institut Toulousain des Maladies Infectieuses et Inflammatoires

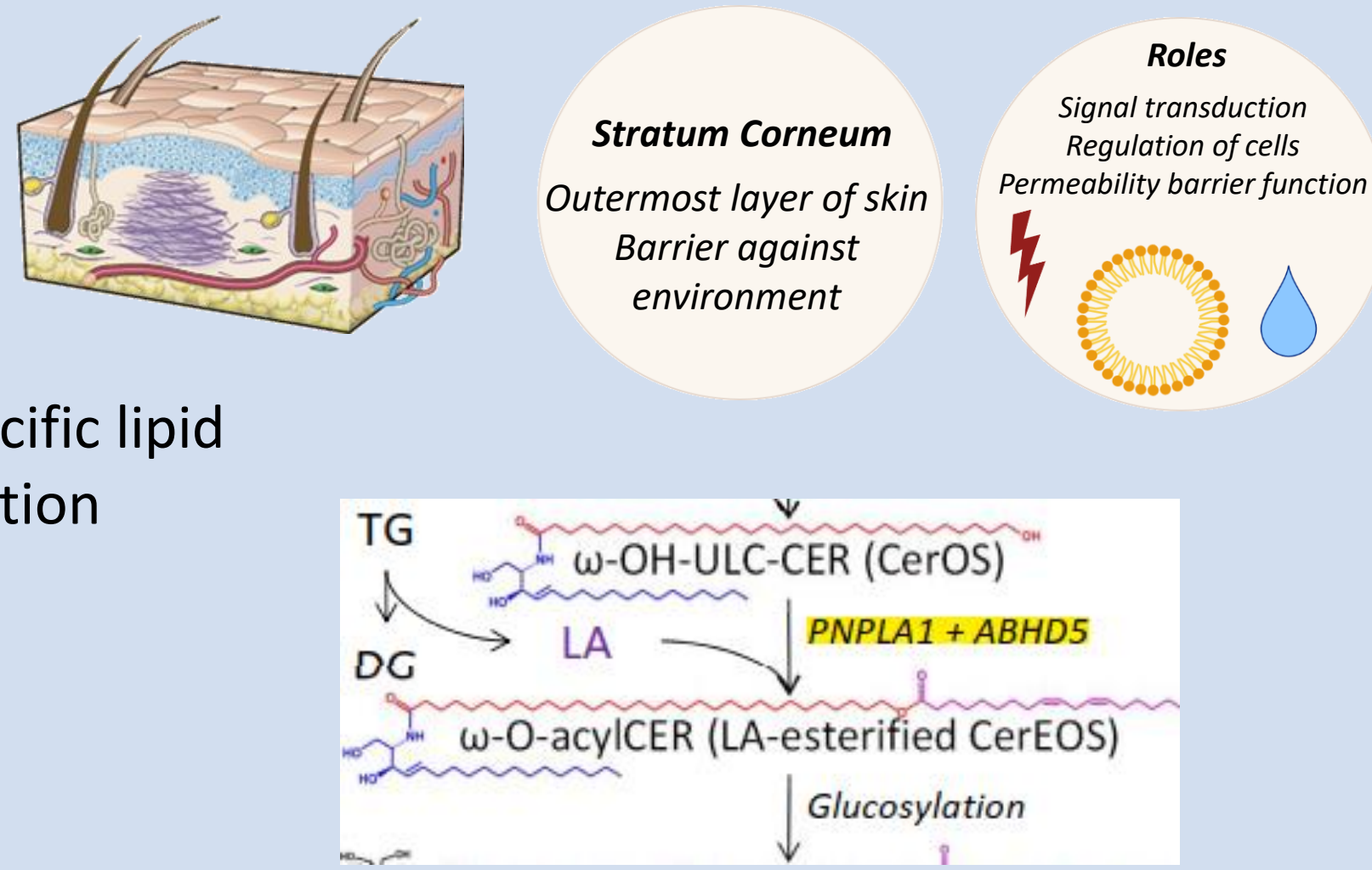
## Biological context

✓ Skin ceramide are key partners of epidermal barrier

➢ ω-O-Acylceramide is an epidermis specific lipid with a crucial role for skin barrier function

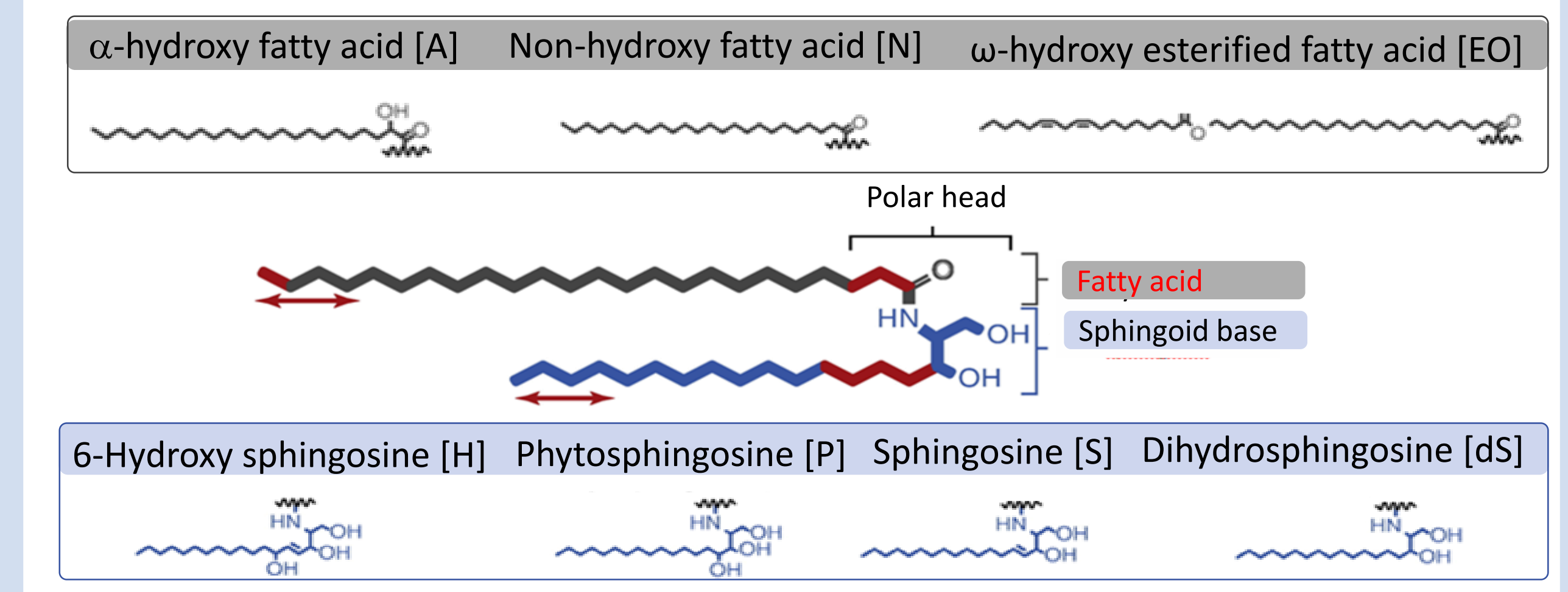
✓ Diseases such as ichthyosis are impacted by ceramide quality

➢ Mutation in patatin-like phospholipase domain-containing 1 (PNPLA1) causes autosomal recessive congenital ichthyosis

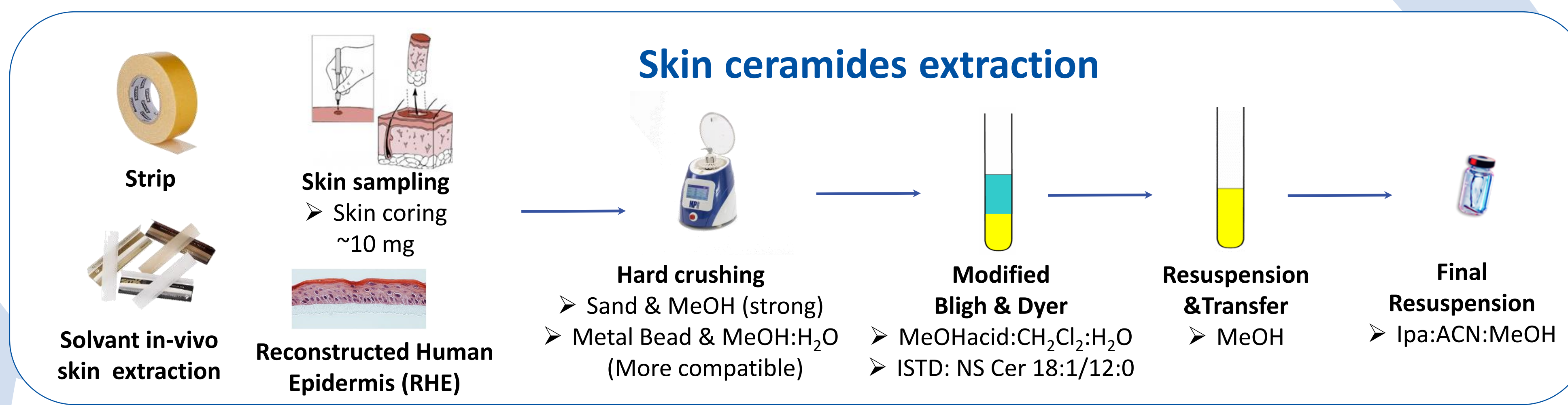


➢ PNPLA1 mutated patients present a default in CerEOS synthesis

## Ceramides structures

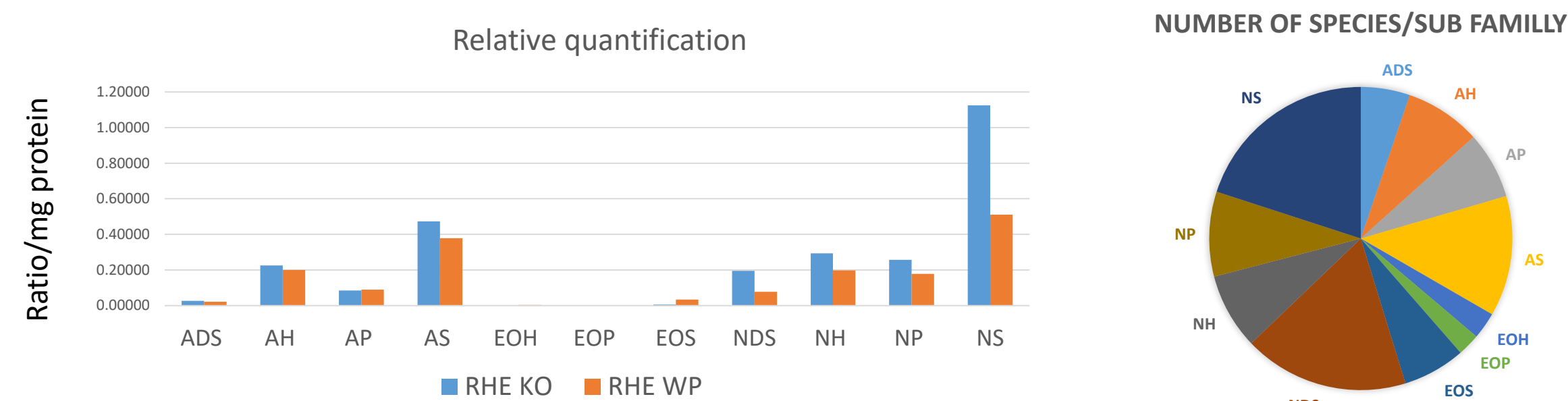


✓ Huge and complex diversity of epidermal ceramides

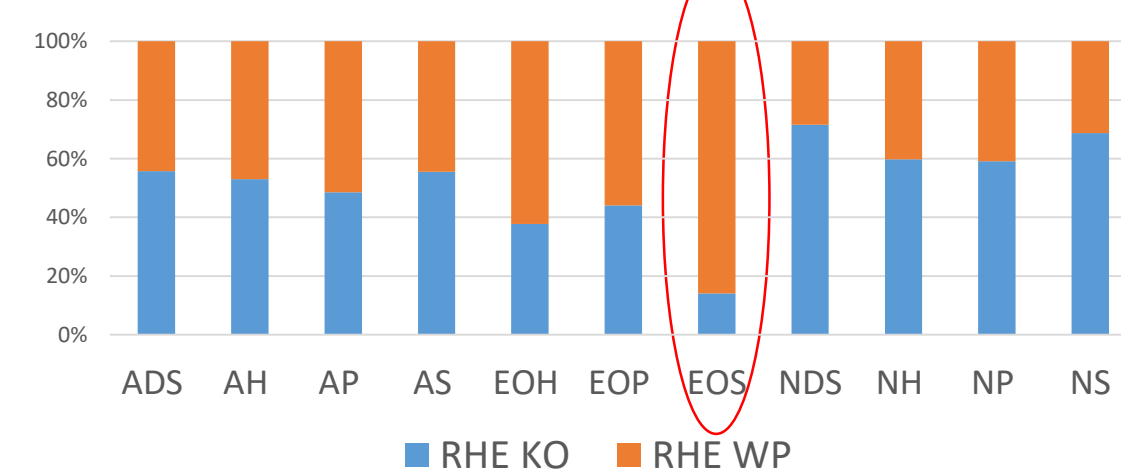


## RHE analysis

✓ Analysis of 209 ceramides species in 11 subclasses



✓ Decrease of CerEOS in PNPLA1 KO



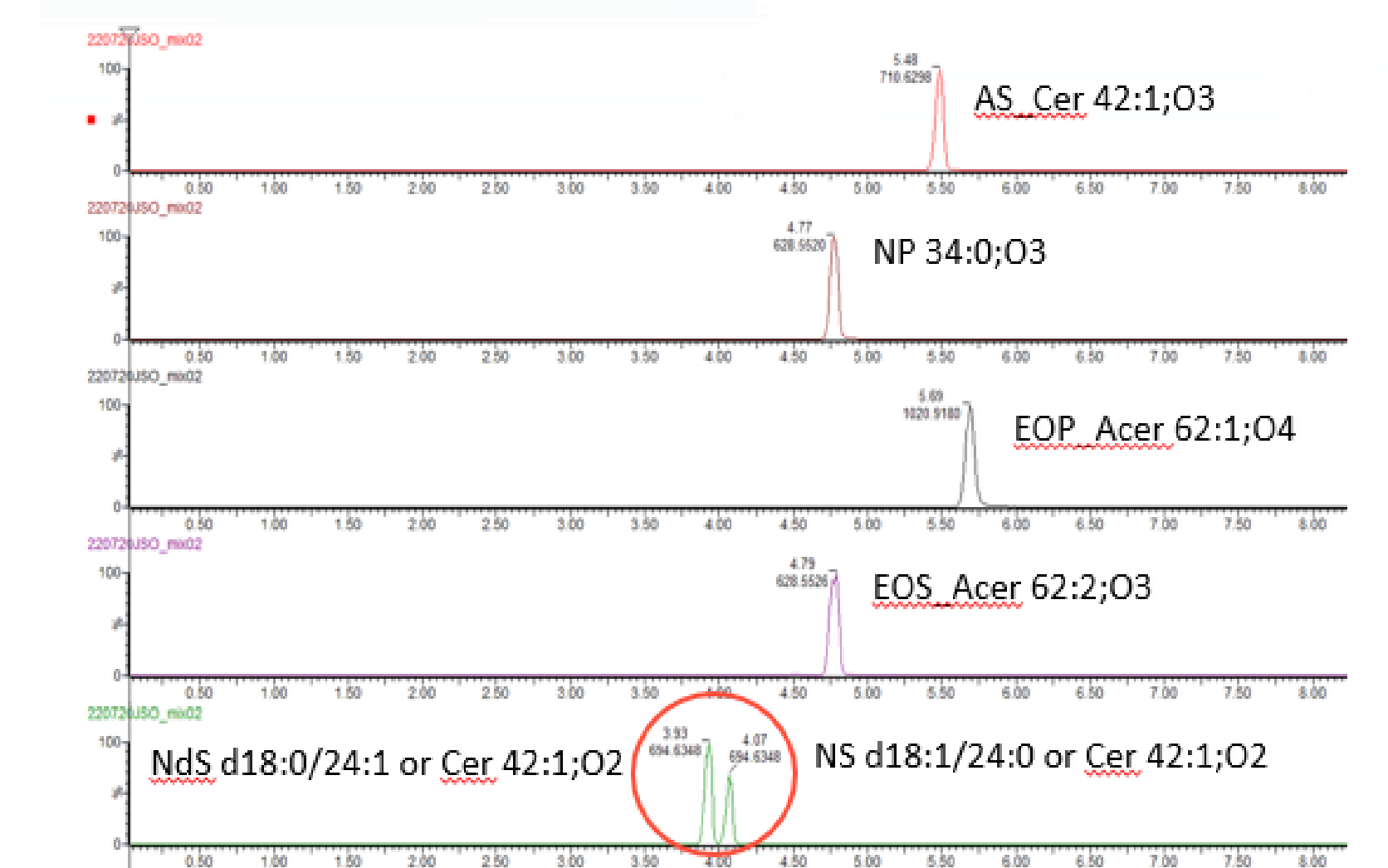
## SFC-QTOF analysis

✓ Optimized SFC conditions

**Column** : Torus DIOL 130Å, 1.7µm, 3 x 100 mm; Waters  
**A solvent** : SCCO<sub>2</sub>  
**B solvent (=Modifier)** : IPA:ACN:MeOH 30:30:40 (v/v/v)  
 0.1% acid formic  
**Flow rate** : 1.1 mL/min  
**ISM** : Methanol at 0.1 mL/min



✓ Separation by polar heads in 8min



## Data Processing

✓ Home made data base:

➢ 280 species for 11 sub-classes

Metabolite	m/z	RT (min)	Adduct
ADS_Cer34:0_O3	600.52088	5.09	[M+HCOO] <sup>-</sup>
NDS_Cer40:1_O2	666.60422	4.19	[M+HCOO] <sup>-</sup>
AP_Cer45:0_O4	770.68795	6.78	[M+HCOO] <sup>-</sup>

✓ Data treatment

➢ MS DIAL

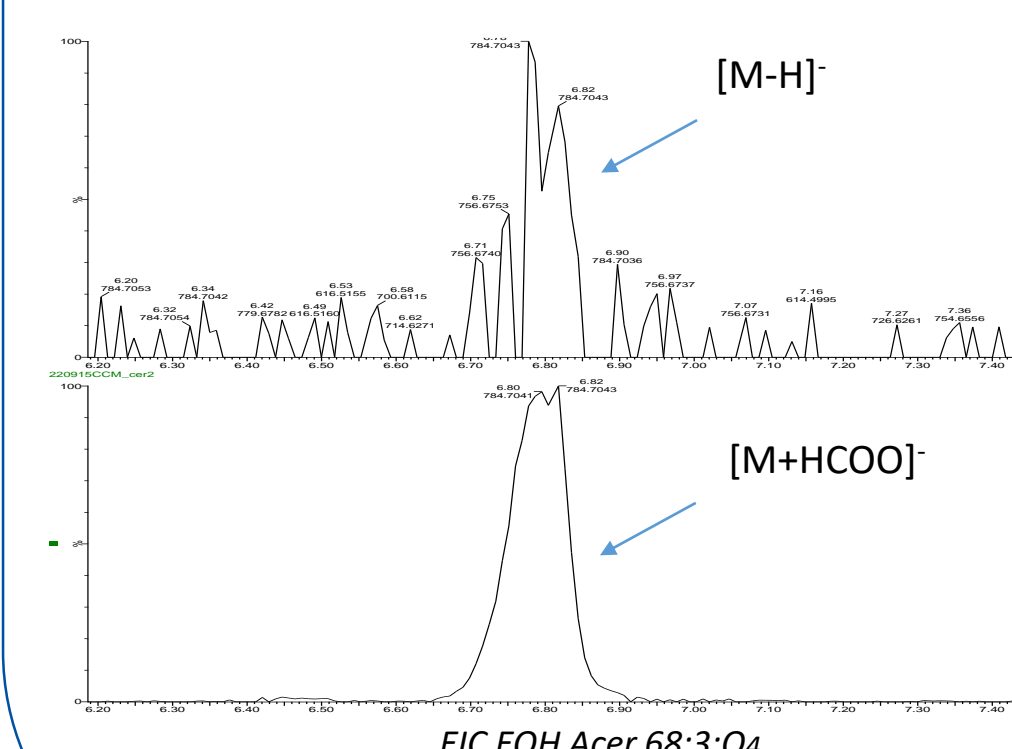
➢ Mzmine 3



## Ceramides characterization by MS/MS acquisition

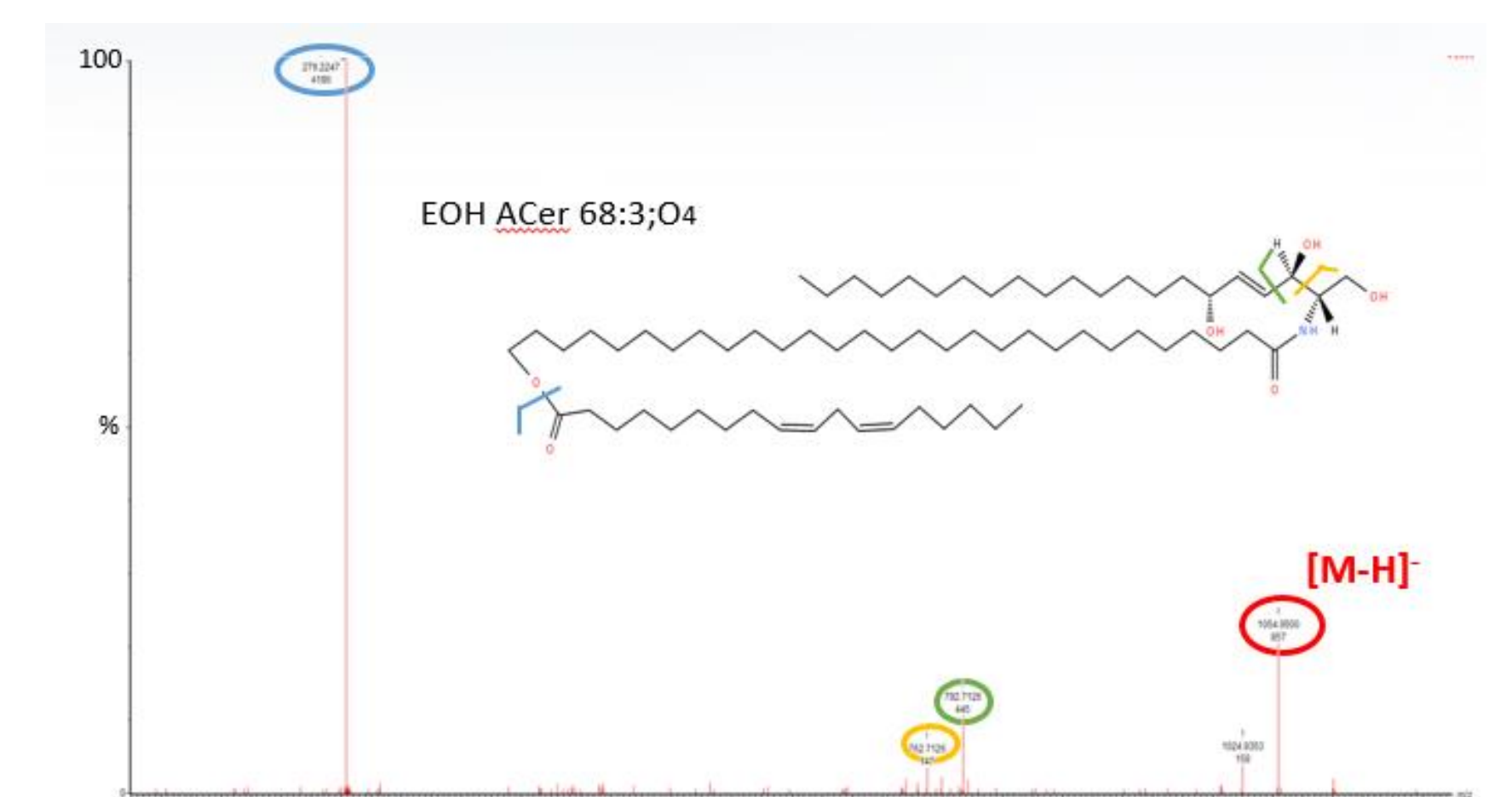
✓ Mass detection

➢ ESI negative mode  
 ➢ [M+HCOO]<sup>-</sup> adduct



✓ MS/MS fragmentation

➢ Validation of MS/MS for all on [M+HCOO]<sup>-</sup>



## Conclusion & outlooks

- ✓ Development of a specific and robust method for skin ceramides quantitative profiling using SFC-QTOF
- ✓ Application to RHE sample in the context of ichthyosis diseases
- ✓ Need to develop the analysis of Cer EOS precursor: CerEOS
- ✓ Continue the optimization of extraction on various sample (i.e Strip)

## References

- [1] Smeden et al, Biochimica et Biophysica Acta, 2014 (<https://doi.org/10.1016/j.bbali.2013.10.002>)
- [2] Smeden et al, Biochimica et Biophysica Acta, 2014 (<http://dx.doi.org/10.1016/j.bbali.2013.11.006>)
- [3] Jamin et al, EJMS, 2018 (DOI: 10.1177/1469066718815380) Forum lipidomic meeting, ILS, Vienna, 2023

## Acknowledgments

R egion Occitanie  
 Pierre Fabre Dermo-cosm etique  
 Inserm

