



HAL
open science

Seed storage protein composition and glucosinolate content in rapeseed: towards the identification of genetic and molecular determinants

Véronique Solé-Jamault, Sophie Rolland, Erwan Corlouer, Alain Lecureuil,
Nathalie Marnet, Sophie Jasinski, Nathalie Nesi

► To cite this version:

Véronique Solé-Jamault, Sophie Rolland, Erwan Corlouer, Alain Lecureuil, Nathalie Marnet, et al.. Seed storage protein composition and glucosinolate content in rapeseed: towards the identification of genetic and molecular determinants. *Graines 2023*, Nov 2023, Versailles, France. . hal-04245596

HAL Id: hal-04245596

<https://hal.science/hal-04245596>

Submitted on 17 Oct 2023

HAL is a multi-disciplinary open access archive for the deposit and dissemination of scientific research documents, whether they are published or not. The documents may come from teaching and research institutions in France or abroad, or from public or private research centers.

L'archive ouverte pluridisciplinaire **HAL**, est destinée au dépôt et à la diffusion de documents scientifiques de niveau recherche, publiés ou non, émanant des établissements d'enseignement et de recherche français ou étrangers, des laboratoires publics ou privés.

Seed storage protein composition and glucosinolate content in rapeseed : towards the identification of genetic and molecular determinants

2S napins are sulfur-rich seed storage proteins. In modern rapeseed varieties '00' without erucic acid (EA) and low in glucosinolates (GSL), the 2S content is generally lower than in older varieties '++' (rich in erucic acid and glucosinolates).

Objective: Identify the genetic and molecular bases of the relationship between the glucosinolate and 2S contents in rapeseed

Matériel & Methods

□ Rapeseed

- 174 winter rapeseed accessions : WOSR++ (31), WOSR0+ (15), WOSR +0 (1), WOSR 00 (127) in 9 environments (location x year) and 2 N nutrition regimes
- High dense genotyping assays (270k SNP)
- 12S and 2S contents by size exclusion chromatography
- GSL by NIRS

□ Arabidopsis

- T-DNA mutants from the SALK collection
- 1 trial (growth chamber, 15 biological repetitions)
- Elementary analysis CNS by Dumas combustion
- 2S content by electrophoresis
- GSL content by UPLC TQD

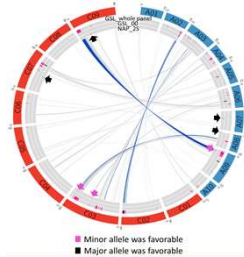
□ Genetic and genomic analyses:

- GWAS was conducted using a mixed linear model including a Kinship matrix (MLM-K)
- Sequence data : WOSR00 DARMOR Bzh [1] and WOSR++ SAREPTA (personal communication).
- Alignment and tree (neighbor joining) with QIAGEN CLC Main Workbench 23.0

2S & GSL QTL

- Identification of 7 loci (QTL) controlling the 2S content located on chromosomes A07, A08, A09, C03 (2), C07 and C09 (Fig.1 – arrows).
- Favorable allele for high 2S content is the minor allele in the population
- 3 co-localizations between QTL for 2S and GSL contents

Fig1. Circos diagram showing the mapping of 2S QTL and GSL QTL onto the rapeseed genome. The GSL QTL were calculated within the whole population ("GSL_ whole panel" lane) or the double low subset ("GSL_00" lane). Pairs of homoeologous genes between the A (blue) and C (red) sub-genomes are represented by gray lines (homoeologous genes between QTL and regions carrying no other QTL) or blue lines (homoeologous genes between QTL).



S metabolism genes

Under these QTL, six different genes involved in sulfur-based metabolism pathways were targeted and their orthologs in *Arabidopsis thaliana* were identified.

| Gene | Chromosome | <i>A. thaliana</i> Ortholog |
|----------------|------------|-----------------------------|
| MYB34 | A09 - 1 | At5g60890 |
| | C09 - 2 | |
| MYB28 | C09 - 2 | At5g61420 |
| ATSD11 | C09 - 2 | At5g48850 |
| GSH2 | C09 - 2 | At5g27380 |
| APK APS kinase | A09 - 3 | At2g14750 |
| IAA28 | C09 - 2 | At5g25890 |

Table. List of targeted genes underlying common QTLs between 2S and GSL with correspondence of *Arabidopsis* orthologs

Myb28 rapeseed polymorphism

According to the results obtained with the *Arabidopsis* mutant lines and literature, we focused on the *Myb28* gene family in rapeseed.

The resources available led to identify *Myb28* orthologues in oilseed rape (6 orthologues on WOSR++ and 5 orthologues on WOSR00 (loss of the copy on chromosome A09) and to build a phylogenetic tree (Fig.3).

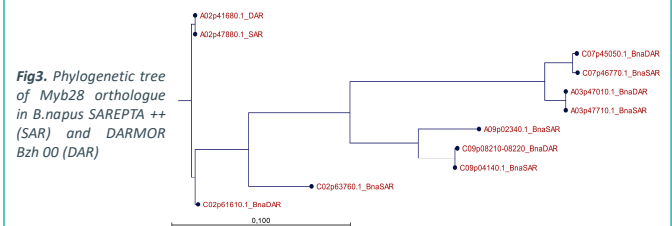


Fig3. Phylogenetic tree of *Myb28* orthologue in *B.napus* SAREPTA ++ (SAR) and DARMOR Bzh 00 (DAR)

The 4bp insertion on *Myb28* C09 gene of WOSR00 previously identified by [2] was confirmed leading to the production of stop codon and truncation of *Myb28* protein (Fig4).

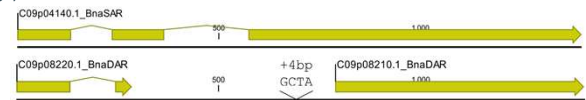
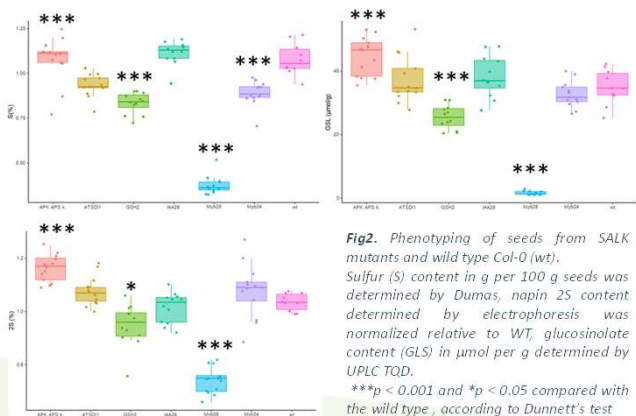


Fig4. Genomic *Myb28* representation of SAREPTA (WOSR++) and DARMOR (WOSR00) on C09 chromosome associated to the translated reading frame

Work in progress : identification of *Myb28* profile in WOSR 00 accessions with high 2S content

Phenotyping of SALK mutants

Homozygous mutant and wild type lines were scored for oil (%C), protein (%N) (data not shown), sulfur (%S), 2S and total GSL contents. Only the *myb28* line (SALK_136312c) has a strong negative impact on all 3 variables observed simultaneously. These results have to be confirmed by a second culture.



Conclusion & Perspectives

Our results showed that the glucosinolates and 2S napin contents were positively correlated in winter oilseed rape. Crop conversion to low glucosinolate varieties tended to have reduced the 2S content in seeds of the modern-grown varieties. The sulfur metabolic pathway has probably been affected by selection. Our results suggested that *Myb28* genes could be a potential target. These results provided new clues how to improve the seed protein composition in rapeseed.

References

- [1] Rousseau-Gueutin M. et al. *GigaScience* vol. 9,12 (2020): g1aa137.
[2] Schilbert H.M. et al. *Genes* 13, 1131 (2022).