



HAL
open science

Linking blood oxylin profiles to internal POPs exposure levels in women undergoing in vitro fertilization

Anne-Lise Royer, Tiphaine Lefebvre, Thomas Fréour, Stéphane Ploteau, Philippe Marchand, Bruno Le Bizec, Yann Guitton, Jean-Philippe Antignac, Germán Cano-Sancho

► **To cite this version:**

Anne-Lise Royer, Tiphaine Lefebvre, Thomas Fréour, Stéphane Ploteau, Philippe Marchand, et al.. Linking blood oxylin profiles to internal POPs exposure levels in women undergoing in vitro fertilization. JS RFMF 2023, May 2023, Perpignan, France. 2023. hal-04241252

HAL Id: hal-04241252

<https://hal.science/hal-04241252>

Submitted on 13 Oct 2023

HAL is a multi-disciplinary open access archive for the deposit and dissemination of scientific research documents, whether they are published or not. The documents may come from teaching and research institutions in France or abroad, or from public or private research centers.

L'archive ouverte pluridisciplinaire **HAL**, est destinée au dépôt et à la diffusion de documents scientifiques de niveau recherche, publiés ou non, émanant des établissements d'enseignement et de recherche français ou étrangers, des laboratoires publics ou privés.

Linking blood oxylipin profiles to internal POPs exposure levels in women undergoing in vitro fertilization

Anne-Lise Royer^a; Tiphaine Lefebvre^{a,b,c}; Thomas Fréour^{b,c,d}; Stéphane Ploteau^{b,e}; Philippe Marchand^a; Bruno Le Bizec^a; Yann Guitton^a; Jean-Philippe Antignac^a; German Cano Sancho^a



^a Oniris, INRAE, LABERCA, 44300, Nantes, France

^b CHU Nantes, Nantes Université, Service de médecine et biologie de la reproduction, gynécologie médicale, 38 bd Jean Monnet, Nantes, France

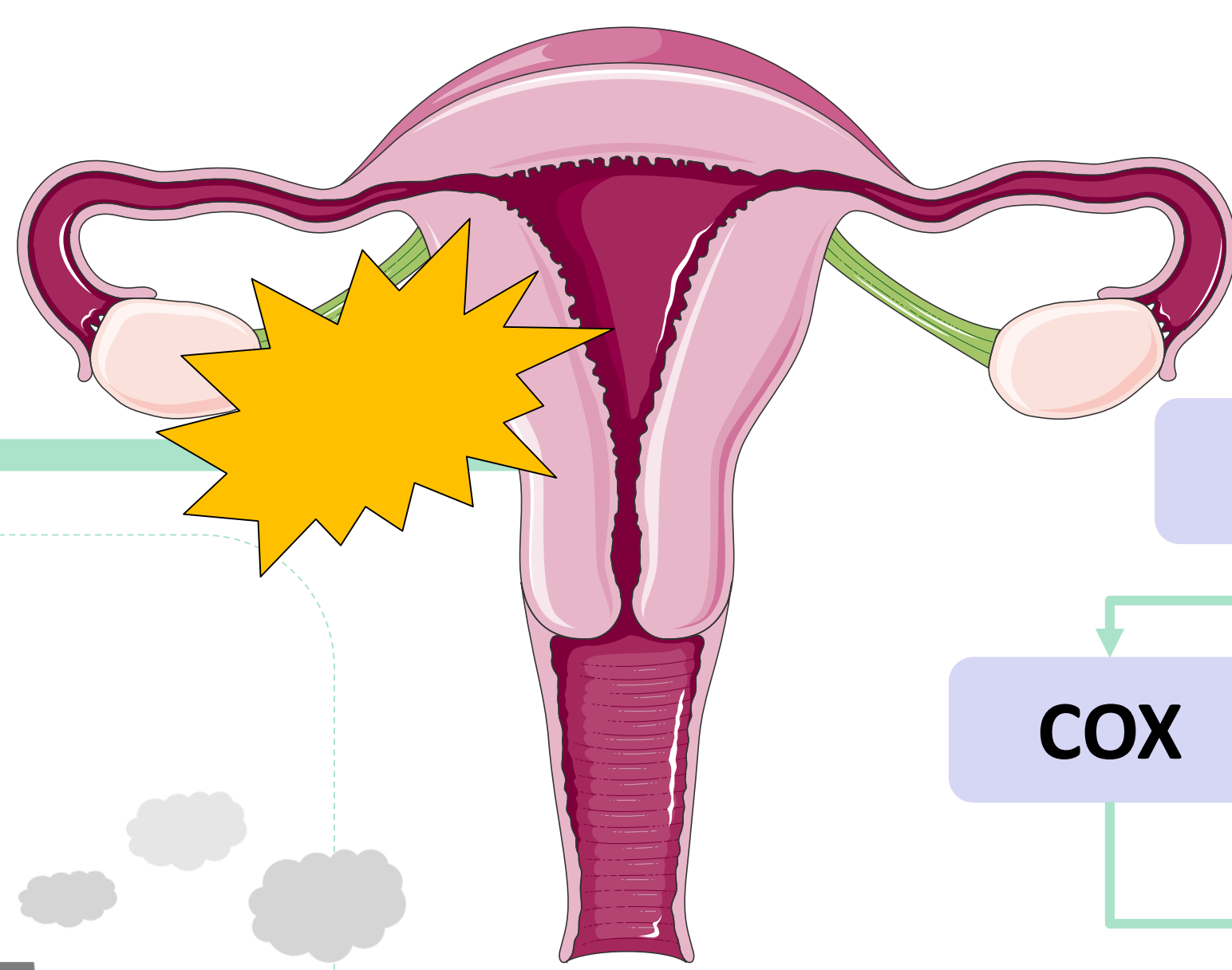
^c Faculté de Médecine, Nantes Université, France

^d Nantes Université, CHU Nantes, INSERM, Center for Research in Transplantation and Translational Immunology, UMR 1064, F-44000 Nantes, France

^e CHU Nantes, Department of Gynecology and Obstetrics, 38 bd Jean Monnet, Nantes, France

Introduction and objectives

The impact of environmental pollutants on gynecological disorders is mediated by inflammation and oxidative stress, but little is known about the interaction of oxylipins, bioactive lipids derived from polyunsaturated fatty acids that play an important upstream role in regulating of these biological processes. **The aim** of this study was to explore factors influencing the levels of oxylipins and their precursor fatty acids in the serum of women undergoing in vitro fertilization (IVF), including internal exposure to chemical pollutants and underlying gynecological disorders in infertile women.



PFAS

PCBs

Chemical exposome

Arachidonic Acid

COX

5/15-LOX

P450

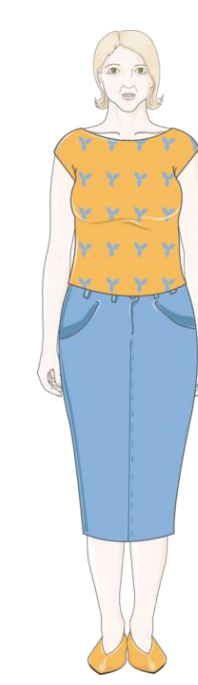
Inflammation

Reproductive disorders

Parts of the figure were drawn by using pictures from Servier Medical Art

Methods

Study population (n=100 women attending IVF) CHU Nantes



Fertile women (n=24)

Infertile (n=76)

Endometriosis

Polycystic ovaries

Ovarian Insufficiency

Unexplained

Laboratory Analysis

Free fatty acids

30 μ L serum
+ ISTD
+ heptane and cold drifting agent
Liquid/liquid extraction
Evaporation of organic phase
+ re-suspension with ethyl acetate



Agilent 5973 - GC-FID/MS
Column FAMEWAX 30 m x 0.25 mm, 0.25 μ m

Oxylipin profiling

200 μ L serum
+ ISTD
Protein precipitation (ice Methanol)
Extraction on SPE in 96-well plate, elution with methanol
Evaporation
+re-suspension with methanol



Waters Xevo TQ-S - ESI
Column BEH C18 100 x 2.1 mm, 1.7 μ m

Results

Figure 1. The most abundant free fatty acids in serum were C18:1, C18:2 and C18:0, followed by arachidonic acid (C20:4-w6). The oxylipins thromboxane B2 (TXB2), 5-HETE, 15-HETE and prostaglandin D2 (PGD2) presented the largest concentrations in serum (1B). Arachidonic acid (C20:4-w6) was positively associated with PGE2 and negatively correlated with PGD2, 8-iso-PGA2 and 5-HETE (1C).

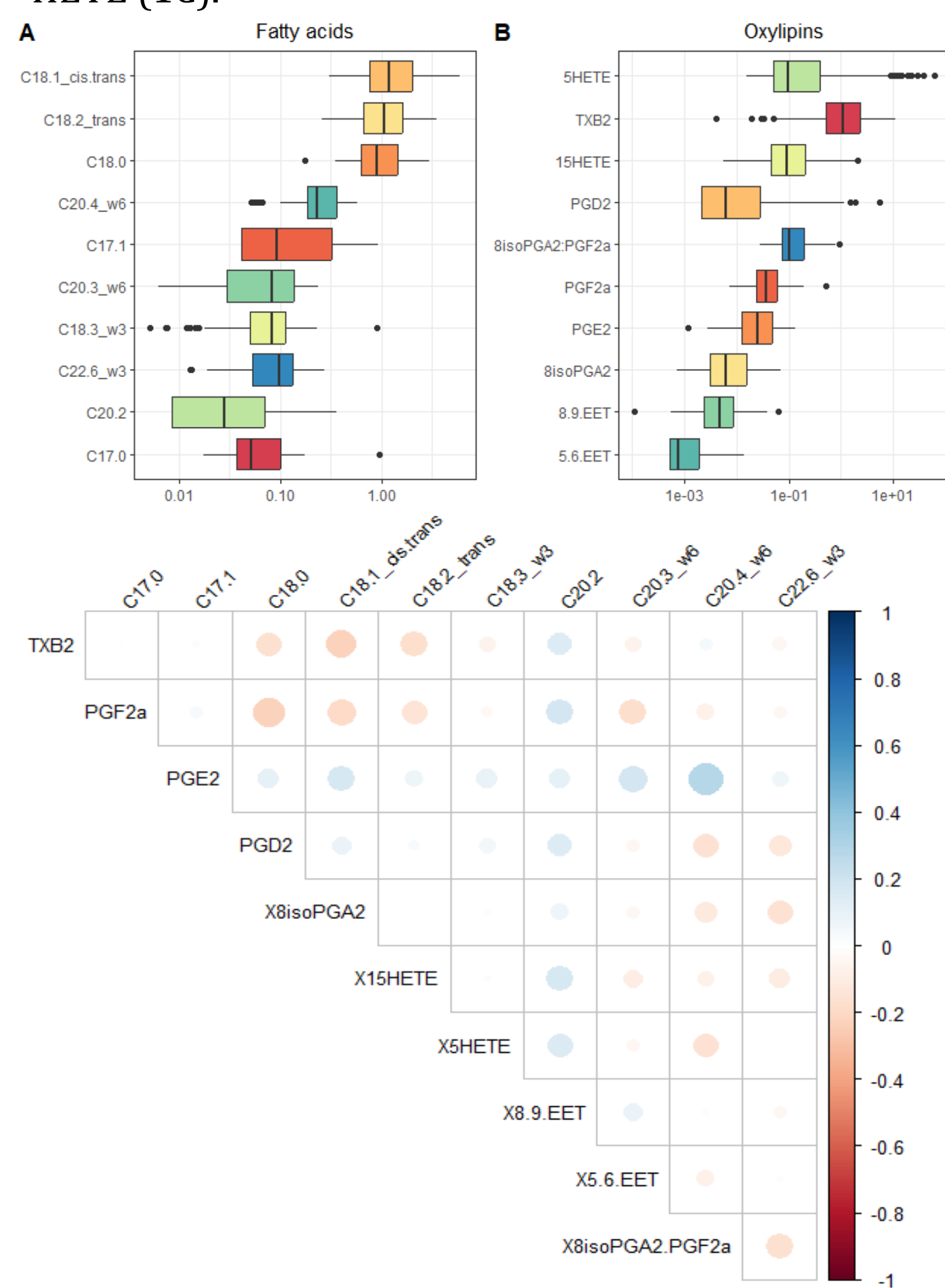


Figure 2. The associations between oxylipins and organochlorinated chemicals like the polychlorinated biphenyls or pesticides were statistically non-significant (2A). The fluorinated pollutant, perfluoroundecanoic acid (PFUnA) was negatively associated with 5-HETE, 15-HETE, PGD2 and 8-iso-PGA2 (2B). The levels of anti-müllerian hormone (AMH) were not associated with the oxylipin levels (2C). Significant values are depicted with white circles ($p < 0.05$).

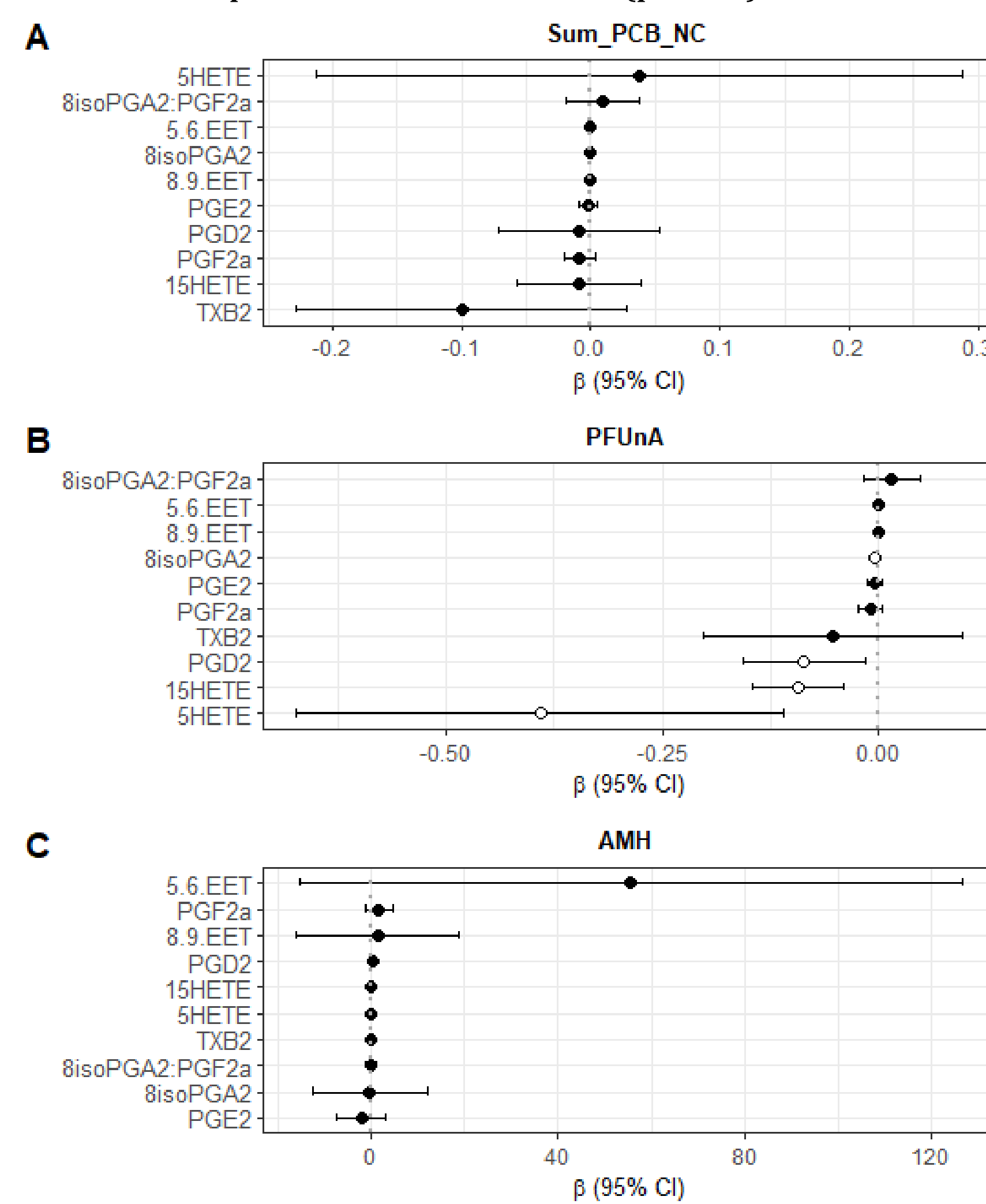
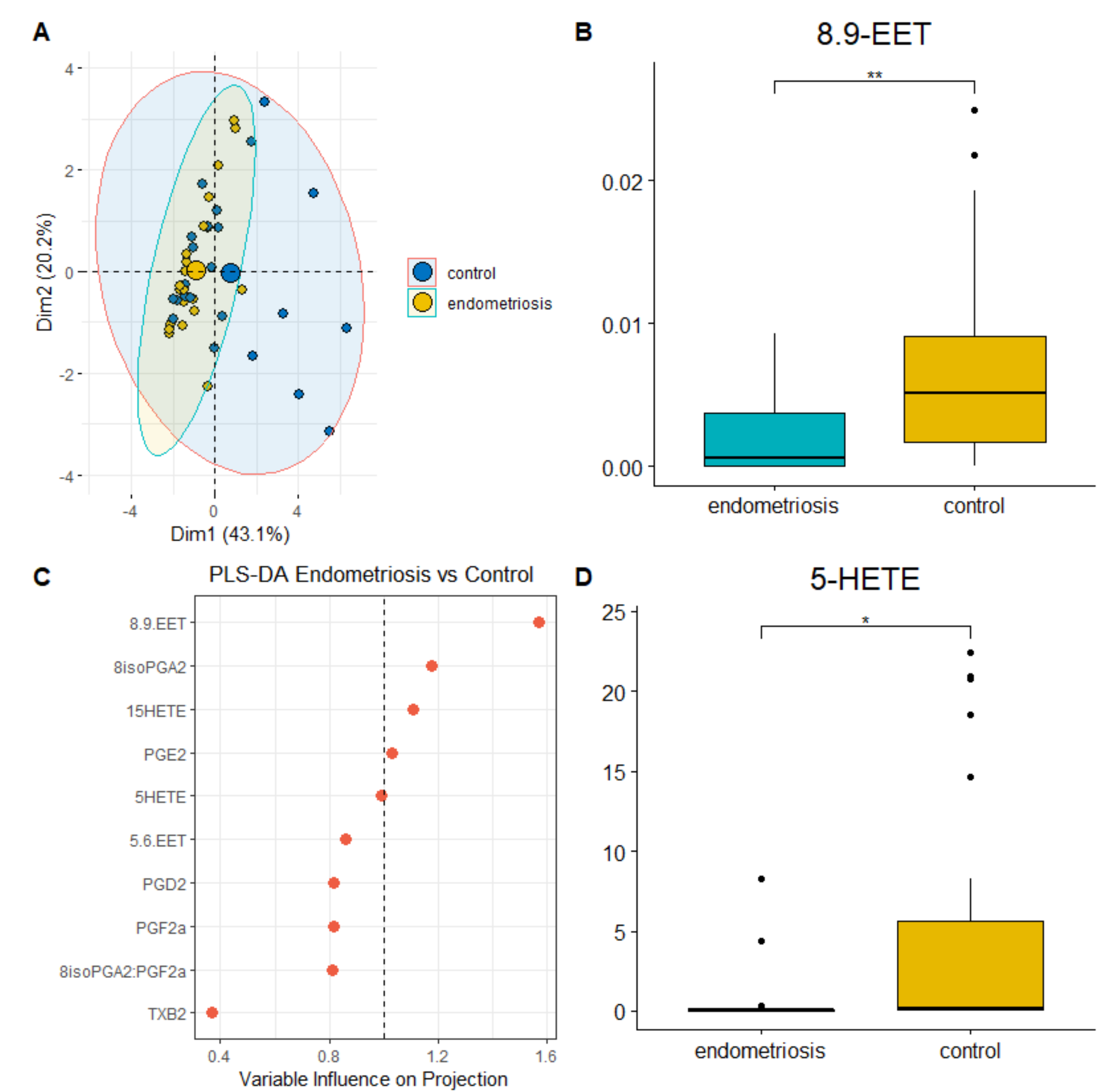


Figure 3. The levels of oxylipins poorly discriminated the groups of women attending IVF (3A) Infertile women with endometriosis showed lower levels of oxylipins 8.9-EET and 5-HETE than fertile women used as control (3B-D). Fertile women showed profiles of oxylipins similar to those of infertile women with polycystic ovaries and no associations were found between endometriosis status and levels of PFUnA. (Data not shown).



Acknowledgements :



Conclusions

Infertile women showed a specific profile of oxylipins when compared with fertile women. Further research will be conducted to better understand the potential role of oxylipins on the functional associations between environmental pollutants and gynecological disorders.