



HAL
open science

Redescription of *Apocorophium acutum* (Crustacea, Amphipoda, Corophiidae) with material from type locality and key of world *Apocorophium* species

Benoit Gouillieux, Hugues Blanchet, Patrice Gonzalez

► **To cite this version:**

Benoit Gouillieux, Hugues Blanchet, Patrice Gonzalez. Redescription of *Apocorophium acutum* (Crustacea, Amphipoda, Corophiidae) with material from type locality and key of world *Apocorophium* species. *Zookeys*, 2022, 1106, pp.101-119. 10.3897/zookeys.1106.83340 . hal-04239285

HAL Id: hal-04239285

<https://hal.science/hal-04239285>

Submitted on 12 Oct 2023

HAL is a multi-disciplinary open access archive for the deposit and dissemination of scientific research documents, whether they are published or not. The documents may come from teaching and research institutions in France or abroad, or from public or private research centers.

L'archive ouverte pluridisciplinaire **HAL**, est destinée au dépôt et à la diffusion de documents scientifiques de niveau recherche, publiés ou non, émanant des établissements d'enseignement et de recherche français ou étrangers, des laboratoires publics ou privés.



Distributed under a Creative Commons Attribution 4.0 International License

Redescription of *Apocorophium acutum* (Crustacea, Amphipoda, Corophiidae) with material from type locality and key of world *Apocorophium* species

Benoit Gouillieux¹, Hugues Blanchet¹, Patrice Gonzalez¹

¹ *Université de Bordeaux, CNRS, EPOC, EPHE, UMR 5805, F-33600 Pessac, France*

Corresponding author: Benoit Gouillieux (benoit.gouillieux@u-bordeaux.fr)

Academic editor: Charles Oliver Coleman | Received 9 March 2022 | Accepted 23 May 2022 | Published 17 June 2022

<http://zoobank.org/1F1AE2A7-EA38-48DD-9EDE-021B6CB4C57F>

Citation: Gouillieux B, Blanchet H, Gonzalez P (2022) Redescription of *Apocorophium acutum* (Crustacea, Amphipoda, Corophiidae) with material from type locality and key of world *Apocorophium* species. ZooKeys 1106: 101–119. <https://doi.org/10.3897/zookeys.1106.83340>

Abstract

Apocorophium acutum (Chevreux, 1908), the type species of the genus, was originally but only partially described by Chevreux with female specimens from Bônes (Algeria); male specimens were later described from Brittany (France). Since then, the species has been recorded in different places of the world, some of them questionable. Herein, the species is entirely redescribed with material from the type locality and Brittany, and additional material from Arcachon Bay is studied to provide biological data. The known geographical distribution of this species is summarized, and a world identification key of *Apocorophium* species is also given.

Keywords

Corophiini, ecology, redescription, world key

Introduction

Corophiini Leach, 1814 are generally tube-dwelling amphipods present in various marine, estuarine, and freshwater habitats, including in sandy to muddy bottoms, with hydrozoa, on algae, and among oysters, and some species can be commensal (Crawford 1937; Lincoln 1979; Bousfield and Hoover 1997). Some genera and species have a

worldwide distribution. Bousfield and Hoover (1997) reviewed in depth the superfamily Corophioidea Leach, 1814 and described the subfamily Corophiinae, 12 new genera, and a new species. Later, Myers and Lowry (2003) provided a new classification, dividing the suborder Corophiidea Leach, 1814 into two infraorders (Corophiida and Caprellida Leach, 1814) and reassigned the authority of Corophiini, Corophiinae, Corophiidae, and Corophiida to Leach (1814). Lowry and Myers (2013) replaced Corophiidea by Senticaudata Lowry & Myers, 2013.

The identification key by Bousfield and Hoover (1997) is widely used around the world, but unfortunately, the study of some original descriptions of selected Corophiini species show that their key contains mistakes; this was rectified by Gouillieux and Sauriau (2019) in their key to the species characterized by urosome segments fused with uropod 1 arising mainly ventrally.

According to Horton et al. (2021), five species belong to the genus *Apocorophium*: *A. acutum* (Chevreux, 1908), *A. curumim* Valério-Berardo & Thiago de Souza, 2009, *A. lacustre* (Vanhöffen, 1911), *A. louisianum* (Shoemaker, 1934), and *A. simile* (Shoemaker, 1934). *Apocorophium acutum*, the type species of the genus, was partially described by Chevreux (1908) and Chevreux and Fage (1925) from the Algerian Mediterranean and French Atlantic coasts. It is a well-known Mediterranean and Atlantic species (Crawford 1937; Myers 1982; Bachelet et al. 2003) and was subsequently recorded in different areas around the world with more or less detailed descriptions; however, some of these are doubtful. This paper provides a complete redescription of *A. acutum* based on females specimens from Bône (the type locality) and male specimens from Brittany (the geographical area of the first description of a male specimen), additional ecological and biological information, and an identification key to the world *Apocorophium* species.

Materials and methods

Specimens of *Apocorophium acutum* examined come from three different localities (Fig. 1): (1) Bône, Algeria, type locality of female specimens; (2) Trébeurden, Brittany, France, 5 km from Lanion River, which is the geographical area of the first description of male specimens, and (3) Arcachon Bay, France. The specimens were examined with a stereomicroscope and a compound microscope. Body length (BL) from the anterior margin of head to the posterior end of telson and eggs' size were measured with NIS-Elements Analysis software. Females from Arcachon Bay (stations "bouée 13" and "Arcachon harbor") with intact brood pouches were separated in order to measure their fecundity: the eggs were removed from the brood pouch of each female, counted, and their diameter measured. Specimens from a third location in Arcachon Bay (station "blockhaus") were used to evaluate the relationship between body length and gender features (male characteristics features, oostegite shape and presence of eggs). Relationships between quantitative variables such as body length in females and number of eggs in the marsupium were assessed by Spearman's rank correlation in order to potentially



Figure 1. Sampling stations of *Apocorophium acutum* (Chevreux, 1908) used in this study. Bône (Algeria): female locality type; Trébeurden (France): 5 km from the location of the first description of a male; Arcachon Bay (France): additional material examined.

show a possible non-linear but monotone relationship between variables (Hollander and Wolfe 1973). Differences in body length among morphologically different specimens (e.g., males, egg-bearing female, female with smooth oostegite) were tested using non-parametric Kruskal-Wallis test followed by post-hoc pairwise Dunn test where significant differences were assessed by Kruskal-Wallis test (Hollander and Wolfe 1973).

For scanning electron microscope (SEM) studies, specimens were dehydrated in a graded ethanol series, critical-point dried, sputter coated with gold, and examined with a scanning electron microscope. Drawings were carried out from pictures using INKSCAPE software (v. 0.92). Specimens from Bône were loaned from the Muséum national d’Histoire naturelle (MNHN, Paris), and some specimens studied from Trébeurden were deposited in the MNHN, Paris. Molecular analyses on specimens from Trébeurden and Arcachon were carried out and sequences are available in GenBank (GenBank accession numbers: ON455206 to ON455209). Unfortunately, it was not possible to do molecular analyses with material from the type locality to compare with French specimens.

Results

Systematics

Order Amphipoda Latreille, 1816

Suborder Senticaudata Lowry & Myers, 2013

Family Corophiidae Leach, 1814

Subfamily Corophiinae Leach, 1814

Tribe Corophiini Leach, 1814

Genus *Apocorophium* Bousfield & Hoover, 1997

Apocorophium acutum (Chevreux, 1908)

Corophium acutum Chevreux 1908: 75 (original description), fig. 6.—1910: 271, h.—Chevreux and Fage 1925: 366–367, figs 359, 374.—Poisson and Legueux 1926: 320–325, figs 5,6 (Banyuls form).—Schellenberg 1928: 672–673.—Shoemaker 1934: 26–27.—Crawford 1937: 624–625.—Ruffo 1938: 147–148.—Salfi 1939: 31–62, figs 1–7.—Shoemaker 1947: 59, fig. 9.—Hurley 1954: 439–442, figs 2, 3 (in part).—Barnard 1969: 42.—Bousfield 1973: 205, fig. LXIV.—Lincoln 1979: 534, fig. 256 (in part).—Dickinson et al. 1980: 12.—Myers 1982 (in Ruffo ed.): male 188–190, fig. 126.—Barnard and Karaman 1991: 185.

Apocorophium acutum Bousfield and Hoover 1997: 123–125, fig. 35.—Lowry and Stoddart 2003: 88.—Ren 2006: 296–297, fig. 117.—Bano and Kazmi 2012: 113.—Hossain and Hughes 2016: 376–381, figs 2–5.

Not *Corophium acutum* Poisson and Legueux 1926: 320–325, figs 5, 6 (Caen form).—Myers 1982 (in Ruffo ed.): female 188–190, fig. 126.

Doubtful *Apocorophium acutum* Jung and Kim 2007: 247–250, fig. 1.—Demicheli and Verdi: 2018, 1169–1173, figs 1–3.

Material examined. ALGERIA • 6 brooding females and 1 juvenile; Bône (type locality); 4 May 1900; MNHN-IU-2013-19982; campaign MELITA, St. 677 “Melita II”, on concrete blocks removed from the harbor • 1 female, same data as for preceding; MNHN-IU-2016-3401; dissected brooding specimen.

FRANCE • many males and females; Arcachon Bay / station “bouée 13”; 44°38'07.20"N, 001°14'06.60"W; 2 m depth; 20 September 2014; Benoit Gouillieux leg.; mussels, hand-collected on submerged part of a navigation buoy; MNHN-IU-2016-3426 and MNHN-IU-2016-3427 • many males and females; Arcachon Bay / station “Arcachon harbor”; 44°39'36.53"N, 001°09'06.59"W; 0.5 m depth; 20 February 2020; Benoit Gouillieux leg.; on floating pontoons in harbor • 414 specimens; Arcachon Bay / station “blockhaus”; 44°34'00.40"N, 001°14'15.14"W; 5 m depth; between May 2018 and April 2019; Benoit Gouillieux leg.; with Hydrozoa *Amphisbetia operculata* (Linnaeus, 1758) • many males and females; Trébeurden / harbor; 48°46'12.21"N, 003°35'09.71"W; 0.5 m depth; 1 February 2020; Gabin Droual leg.; on floating pontoons (Port); MNHN-IU-2016-3392.

Description (Figs 2–5). Based on adults females, Chevreux collection, MNHN-IU-2016-3401 and MNHN-IU-2013-19982, Bône, Algeria, 4 May 1900, campaign MELITA, St. 677 “Melita II”, type locality.

Head. *Head* with rostrum pointed distally, triangular in dorsal view, reaching lateral ridge of head. *Eyes* visible in alcohol. *Antenna 1* weakly setose; peduncular article 1 rectangular, ventral margin with three robust setae, dorsomedial margin with two robust setae; length ratio of peduncular articles 1–3 = 1.00 : 0.72 : 0.31; flagellum 5-articulate, shorter than peduncle, articles 2–4 with a small aesthetascs ventrodistally. *Antenna 2* peduncular article 3 wider than long, with a pair of mediobasal robust setae; peduncular article 4 with three solitary robust setae; peduncular article 5 with a robust seta medially and a small process mediobasally; flagellum 3-articulate, distal article tiny with two robust setae. *Lower lip* inner lobe subovate, coalescent proximally, rounded apically; mandibular process small and blunt; both lobes covered with patch of pubescence medially. *Right mandible* well developed, incisor process and lacinia mobilis produced inward, bluntly tridentate; accessory setal row with three curved, finely pectinate blades, followed by tuft of pappose setae and a brush-like seta; molar well developed, massive, truncate; palp biarticulate, proximal segment shorter than distal, with 1 finely plumose seta apically, distal segment slender, with pubescence medially and long plumose seta apically. *Left mandible* similar, except for molar process which presents 2 additional blades. *Maxilla 1* outer plate armed with seven setal-teeth apically; palp biarticulate, proximal segment short, distal one extending beyond end of outer lobe, with row of seven distal setae. *Maxilla 2* inner plate with longitudinal row of pinnate setae on inner and distal margins; outer plate extending beyond end of inner one, with row of pinnate setae on distal margin. *Maxilliped* inner plate slender and elongate, basal portion with row of about nine plumose setae, inner margin with four and two pinnate setae; outer plate not reaching distal end of palp article 2, basal portion with row of about ten plumose setae, inner margin densely setose; palp 4-articulate, article 2 elongate, about three times as long as wide, inner margin densely setose, outer margin with one plumose seta distally, article 3 with rounded distal corner, distal article small, 0.24× article 3, with apical setae.

Pereon. *Gnathopod 1* subchelate; coxa ventral margin with three long plumose setae, anterior margin with two simple setae; basis anterior margin unarmed, posterodistal corner with unequal setae; ischium quadrate, with long pinnate setae posterodistally; merus short, with long pinnate setae posterodistally; carpus slightly narrowing distally, anterior margin with one median and two distal simple setae, posterior margin with two rows of pinnate setae; propodus 0.9× carpus, posterior margin slightly convex, medial portion with pectinate setae, palm transverse, slightly convex, edge laminar and transversally striated, limited posteriorly by two robust setae; dactylus falcate. *Gnathopod 2* simple; coxa small, with one long simple seta anteriorly; basis subrectangular, anterodistal and posterodistal corners with a simple seta; ischium flat, depressed, posterodistal corner with a simple seta; merus convexly curved posteriorly, with two rows of long pinnate setae along posterior margin and medial portion; carpus isosceles triangle in shape, strongly widening distally, with two small simple and few long pinnate setae posterodistally; propodus weakly narrowing distally, 1.6× carpus,

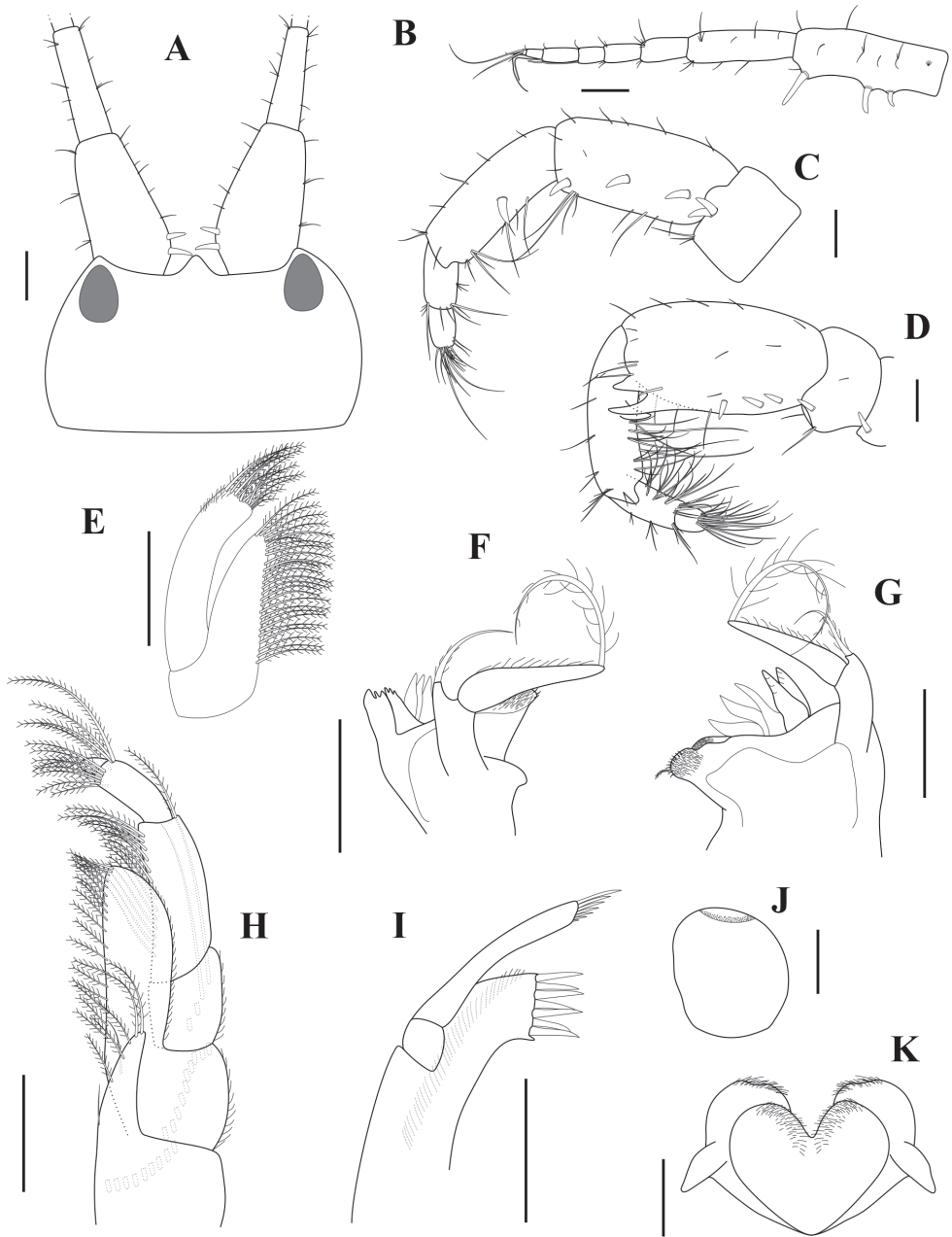


Figure 2. *Apocorophium acutum* (Chevreux, 1908). (**A–C**) brooding female, BL = 3.19 mm, MNHN-IU-2013-19982, Bône (**D**) male, BL = 2.32 mm, MNHN-IU-2016-3392, Trébeurden (**E–K**) female, BL = 3.55 mm, MNHN-IU-2016-3401, Bône. **A** head and antenna 1, dorsal view **B** left antenna 1, outer view **C** right female antenna 2, inner view **D** right male antenna 2, inner view **E** maxilla 2 **F** left mandible **G** right mandible **H** maxilla 1 **I** maxilla 1 **J** upper lip **K** lower lip. Scale bars: 0.1 mm.

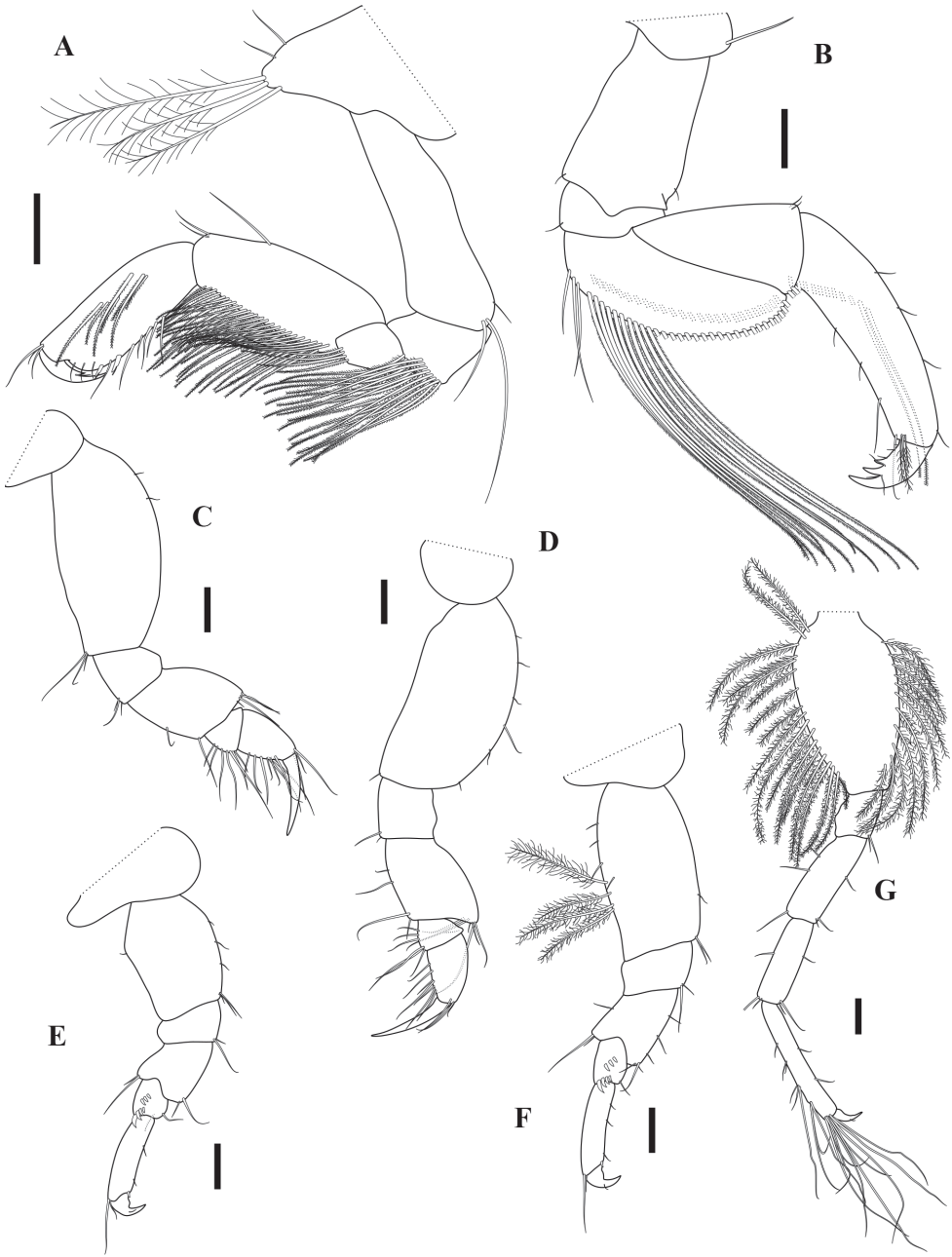


Figure 3. *Apocorophium acutum* (Chevreux, 1908), female BL = 3.55 mm, MNHN-IU-2016-3401. **A** right gnathopod 1, inner view **B** right gnathopod 2, outer view **C–G** right pereopods 3–7, outer view. Scale bars: 0.1 mm.

proximal third of medial portion with oblique row of pinnate setae, anterior and posterior margins sparsely setose, posterodistal corner with simple and plumose setae; dactylus short, flexor margin with two teeth and simple setae.

Pereopod 3 coxa small; basis weakly expanded medially, anterior margin with two setules, posterior margin bare, posterodistal corner with cluster of simple setae; merus anterodistal corner with cluster of simple setae, posterior margin with one medial and one distal simple seta; carpus small, subtriangular, with setae on anterior margin; propodus about twice as long as carpus, posterior margin and anterodistal corner with simple setae; dactylus simple, subequal in length to carpus and propodus length together. **Pereopod 4** similar to pereopod 3, except basis anterior margin slightly more setose. **Pereopod 5** coxa depressed, much wider than long, narrowing distally; basis slightly widened medially, anterior margin weakly setose, posterior margin with one setule; merus widening distally, antero and posterodistal corners with simple setae; carpus short, with two oblique rows of three proximal and four distal robust setae respectively; propodus about four times as long as wide, weakly setose; dactylus short. **Pereopod 6** similar to pereopod 5, but about 1.3× longer; basis more subrectangular, with a row of setules and four plumose setae. **Pereopod 7** elongate, much longer than either pereopod 5 or 6; basis elongate-ovate, moderately expanded anteriorly, densely setose along both margins with long plumose setae; ischium to propodus linear and rectangular; length ratio of articles 2–7 = 1.00 : 0.26 : 0.52 : 0.5 : 0.56 : 0.16.

Pleon. Epimera 1–2 subovate, ventral margins rounded, with long plumose setae; **epimeron 3** subrectangular, distinctly longer than epimera 1–2, ventral margin bare, hind margin with many long simple setae. **Urosomites 1–3** fused, without notch laterally; uropod 1 arising mainly ventrally. **Uropod 1** peduncle rectangular, about 2.2× outer ramus, ventrodistal process present, triangular, blunt, lateral margin with row of robust setae, proximal ones short and setae like, medial margin bare except a small distal robust seta; outer ramus slightly shorter than inner, lateral margin with six robust setae, medial margin bare, three subdistal robust setae, the middle one the longest; inner ramus slightly curved medially, lateral margin with four robust setae, medial margin bare, three subdistal robust setae, the middle one the longest. **Uropod 2** peduncle longer than rami, without ventrodistal process, outer margin with setae on distal half; rami with one distal robust seta; outer ramus slightly shorter than inner with simple setae marginally. **Uropod 3** uniramous, peduncle short, broad, with three simple setae on outer margin; ramus subelliptical, narrowing distally, margins with unequal simple setae. **Telson** fleshy, thickened, grooved centrally, subtriangular, broadest in middle.

Male (sexually dimorphic characters, based on specimens from Trébeurden, France, 1 February 2020, MNHN-IU-2016-3392).

Antenna 1 and 2 (Figs 2D, 5A, D) with longer and more numerous setae; antenna 2 peduncular article 3 with a single or a pair of smaller robust setae; peduncular article 4 with 1–3 ventromedial small robust setae, with two ventrodistal processes; peduncular article 5 without robust seta, with ventroproximal and ventrodistal process, size of process function to maturity of the specimen.

Variability (based on specimens from Bône, Arcachon Bay, and Trébeurden; same data as material examined).

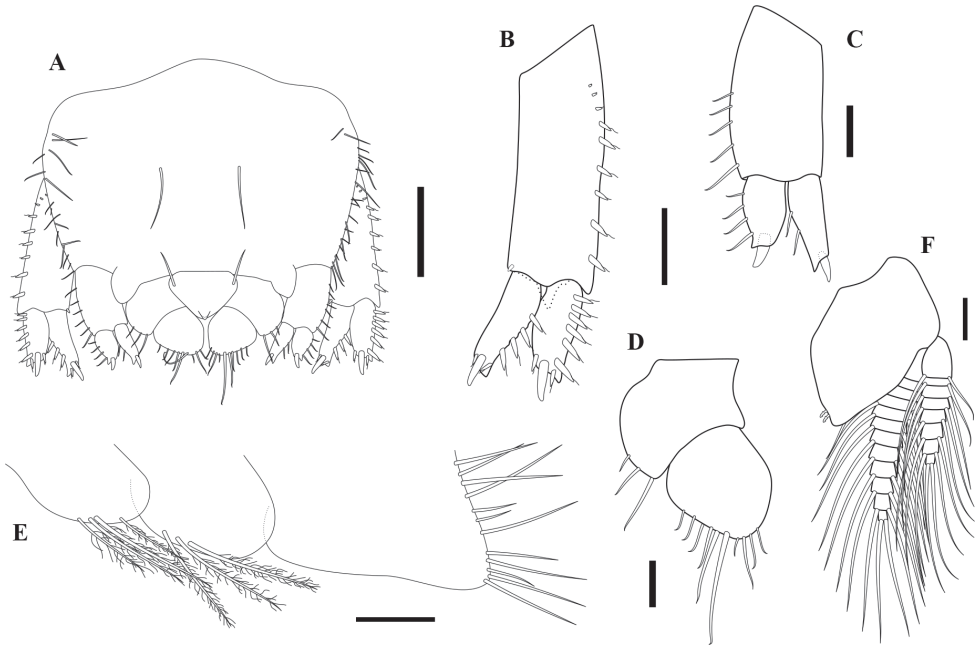


Figure 4. *Apocorophium acutum* (Chevreux, 1908), female BL = 3.55 mm, MNHN-IU-2016-3401 **A** pleotelson, dorsal view **B** uropod 1, dorsal view **C** uropod 2, ventral view **D** uropod 3, dorsal view **E** right epimeral plates 1–3, outer view **F** pleopod 1, dorsal view. Scale bars: 0.2 mm (**A**); 0.1 mm (**B**, **D–F**); 0.05 mm (**C**).

Head with rostrum reaching or not lateral ridge of head; **antenna 1** peduncular article 1 with one or two dorsomedial and two to four ventral robust setae, sometimes no left right symmetry; antenna 1 flagellum with five or six articles; **female antenna 2** peduncular article 4 with two to four robust setae, and few times in larger specimens a distal pair; **male antenna 2** peduncular article 4 with one to three medioventral robust setae, ventrodistal process subequal or the upper one slightly shorter; **maxilliped** article 2 outer margin with one to three plumose setae distally; **gnathopod 1** coxa ventral margin with one to three long plumose setae; **gnathopod 2** dactylus with generally two teeth on flexor margin for adult specimens (specimen with BL < 2.2 mm mainly juveniles with only one tooth, 1.7% of adults specimens examined with three teeth), sometimes no left right symmetry, an adult male specimen (BL = 2.46 mm) with two teeth on the left and a single tooth on the right gnathopod 2; **pereopod 3 and 4** dactylus reaching between proximal to distal end of carpus; **pereopod 5 and 6** carpus with clusters of three or four proximal and three to five distal robust setae; urosome with or without small lateral depression which looks like a vestigial notch; **uropod 1** peduncle with five to nine robust setae along outer margin, sometimes with one to three proximal simple setae, rami with three to five robust setae on outer margin; **uropod 3** peduncle shorter to subequal in length to ramus, variously expanded, with or without setae dorsally; **telson** more or less acute, dorsodistal robust setae tooth-like, mostly not observed.

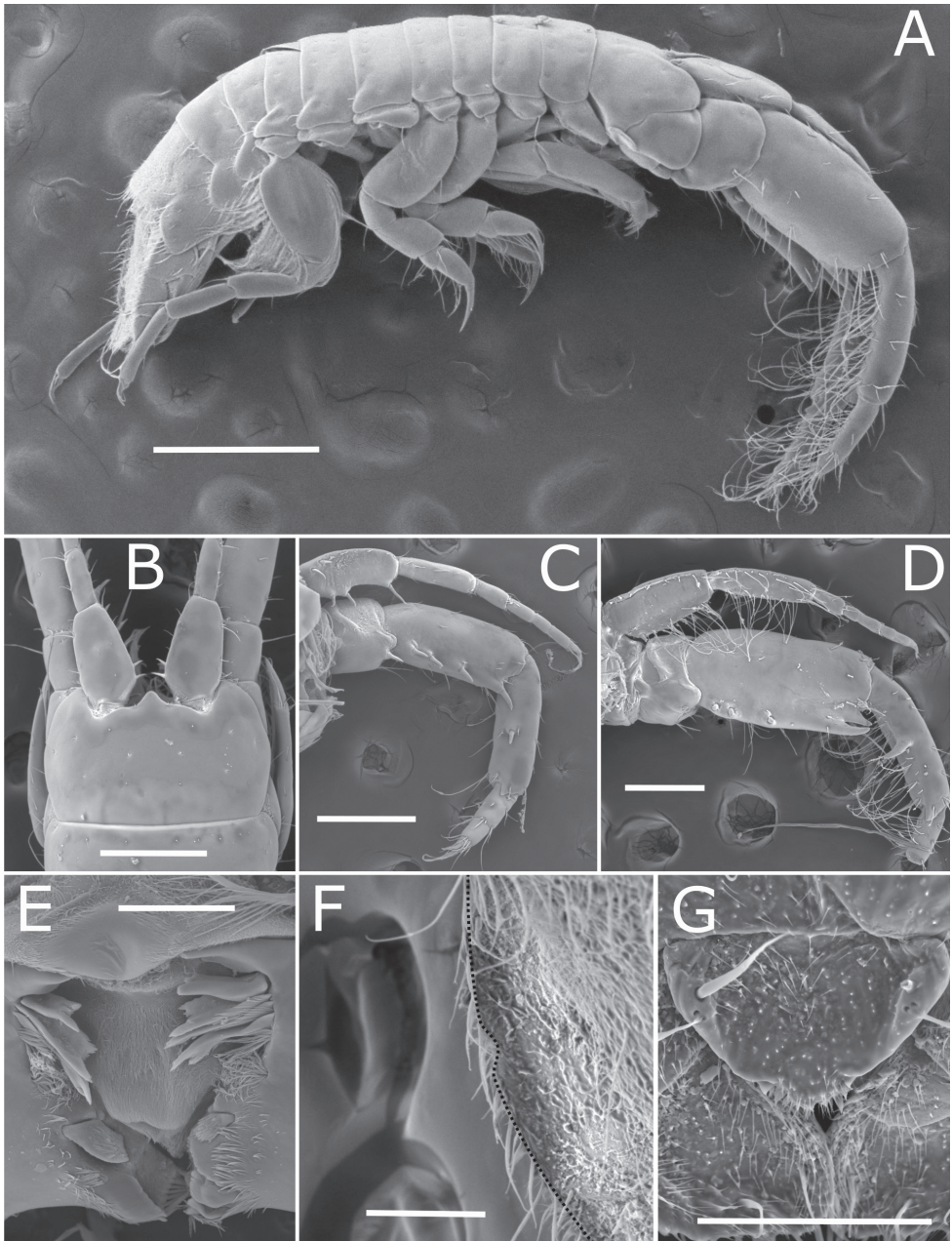


Figure 5. *Apocorophium acutum* (Chevreux, 1908), specimens from Arcachon Bay, station “bouée 13”, France, 20/09/2014 **A** male specimen, lateral view **B** female head, dorsal view **C** female antenna 1 and 2, inner view **D** male antenna 1 and 2, inner view **E** mandibles **F** female pleotelson, dorsolateral view showing vestigial notch (dotted edge) **G** female, telson, dorsal view. Scale bars: 0.5 mm (**A**); 0.250 mm (**B–D**); 0.05 mm (**E**); 0.1 mm (**F, G**).

Ecological data. Thirty-eight brooding females were examined; BL ranged from 2.49 to 4.53 mm; fecundity ranged between 4 and 37 eggs/marsupium; mean fecundity of 9 eggs/marsupium. Eggs were ovoid, with mean major and minor diameters of 0.323 ± 0.055 mm and 0.266 ± 0.037 mm, respectively ($\bar{x} \pm s$; $n = 351$). These females were collected from two locations in Arcachon bay. In both locations, there were moderate but significant positive correlation between body length and number of eggs per marsupium (Spearman's $\rho = 0.69$ and 0.55 , for locations “bouée 13” and “Arcachon harbor”, respectively). There was no significant correlation between the size of eggs and the number of eggs in the marsupium of females (Spearman correlation tests, p -values > 0.05).

Field data collected in Arcachon Bay showed that gender features could be distinguished from a body length of c. 1.7 mm. Smaller female displayed smooth oostegites, while larger female displayed ramified oostegites with or without eggs (Fig. 6; Kruskal-Wallis test followed by post-hoc Dunn tests, p -values < 0.05). Mature female with ramified oostegites or bearing eggs reached higher size than male (Fig. 6; Kruskal-Wallis test followed by post-hoc Dunn tests, p -values < 0.05).

Discussion

The genus *Apocorophium* was described by Bousfield and Hoover in 1997 during their revision of the family Corophiidae, with *Corophium acutum* as the type species. Chevreux originally described *Apocorophium acutum* in 1908 with only female specimens from Bône, Algeria. Later, in 1925, Chevreux and Fage provided the first description of a male with specimens from the Lannion river mouth, Brittany, France. The species has been recorded in European waters (Mediterranean Sea and Atlantic coast), and also in the Suez Canal, Pakistan, New Zealand, South China Sea, and the Atlantic and Pacific coasts of America (Schelleberg 1928; Shoemaker 1934, 1947; Hurley 1954; Barnard 1969; Bousfield 1973; Dickinson et al. 1980; Bano and Kazmi 2012; Hossain and Hughes 2016). Even if most records and redescriptions are this species, some can be considered as doubtful due to inconsistencies (Table 1). This is the case for Korean specimens (Joung and Kim 2007) where some morphological characters differs from *A. acutum* (in parentheses): antenna 1 peduncular article 1 ventral margin bare in females and with only one distal robust seta in males (vs two to four in both sexes), female antenna 2 peduncular article 5 without robust setae (vs with one robust seta), and male antenna 2 peduncular article 4 without robust setae (vs with one to three robust setae). Specimens recently recorded from Uruguay (Demicheli and Verdi 2018) are also doubtful: urosome illustration represents lateral insertion of uropods, which infers *Monocorophium* and not *Apocorophium*. A reexamination of the specimens from Korea and Uruguay is, therefore, needed to confirm their identification, and molecular studies could be helpful for confirming identifications of species. Specimens from Bône, Brittany, and Arcachon Bay agree with the original and subsequent descriptions, apart from Korea and Uruguay specimens (see above). The only difference is related to the male antenna 2: Chevreux and Fage (1925) described and

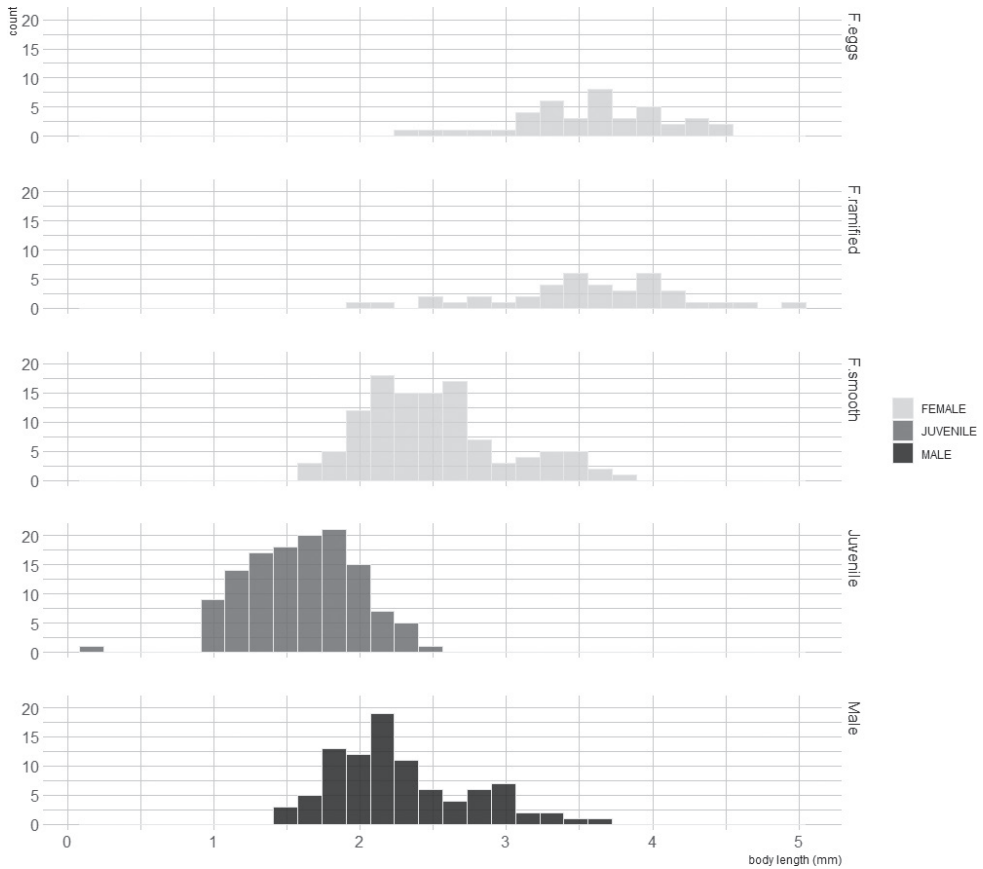


Figure 6. Frequency distribution of body size (in mm) for juvenile, male, female with smooth oostegites (F.smooth), female with ramified oostegites but no eggs (F.ramified), and female with eggs (F.eggs) of *Apocorophium acutum* (Chevreux, 1908) in Arcachon bay, station “blockhaus”.

illustrated male specimens without any reference to robust setae on antenna 2 peduncular articles. Examination of specimens from Brittany, as well as information from other descriptions, reveals the presence of robust setae on peduncular articles 3 and 4. This was probably an oversight during the original description. Two characters that support the close similarity of *A. acutum* to species of *Hirayamaia* are the variously expanded uropod 3 peduncle and the presence of a lateral depression on the fused urosomite in some specimens (Fig. 5F), closed to a notch morphology. However, these two genera can be distinguished by the number of teeth on gnathopod 2 dactylus: two or three in *Apocorophium* and only one in *Hirayamaia* (Gouillieux and Sauriau 2019).

Bousfield and Hoover (1997) provided a revision on the family Corophiidae for species belonging to the tribe Corophiini. They described many new genera and proposed a key, based on type species, to world genera, which has been largely used by all taxonomists. However, some mistakes have been noted by Gouillieux

Table 1. Main morphological characters for *Apocorophium acutum* (Chevreux, 1908) in original and subsequent descriptions.

References	Chevreux, 1908 – Original female description	Chevreux & Fage, 1925 – Original male description	Poisson & Legueux, 1926	Shoemaker, 1947	Hurley, 1954	Bousfield, 1973	Lincoln, 1979	Ruffo et al., 1989	Bousfield & Hoover, 1997 (after Bousfield, 1973)	Ren, 2006	Joung & Kim, 2007	Hossain & Hughes, 2016	Demicheli & Verdi, 2018	Present study
Area	Algeria	France, Monaco	France	East coast of America	New Zealand	New England	British Isles	Italia	Summarize	East China Sea	Korea	South China Sea	Uruguay	Algeria, France
Head rostrum	No data	Short, triangular, not reaching lateral ridge of head	NO DATA	Short, triangular	Short, not reaching lateral ridge of head	Short, triangular, not reaching lateral ridge of head	Short, triangular, not reaching lateral ridge of head	Short, triangular, not reaching lateral ridge of head	Short, triangular, not reaching lateral ridge of head	Short, triangular, not reaching lateral ridge of head	Short, flattened, not reaching lateral ridge of head	Absent	Short, triangular, reaching lateral ridge of head	Short, triangular, reaching or not lateral ridge of head
Male antenna 1 article 1 robust setae ventral margin	No data	3	3	3	4	4	3	3	4	3	1	No data	No data	2–4
Male antenna 1 article 1 robust setae dorsomedial margin	No data	2	0	2	0	1	2	2	1	2	2	No data	No data	1–2
Male antenna 2 article 4 robust setae	No data	0	0	2–4	2	2–3	1–3	1–3	2–3	2	0	2	No data	1–3
Male antenna 2 article 5 process	No data	Medioventral and distoventral	Medioventral and no distal	Medioventral and distoventral	Medioventral and distoventral	Medioventral and distoventral	Medioventral and no distal	Medioventral and distoventral	Medioventral and distoventral	Medioventral and no distal	Medioventral and distoventral	Medioventral and distoventral	No data	Medioventral and distoventral
Female antenna 1 article 1 robust setae ventral margin	3	3	3	3	3–4	2–3	3–4	4–6	2	3–4	0	3	5	2–4
Female antenna 1 article 1 robust setae dorsomedial margin	0?	0?	0?	2	2–3	2	2–3	2	2	2	2	3	2	1–2
Female antenna 2 article 4 robust setae	3	3	3	3	3	3	4	6, some in pairs	3	3–5	3	3	3	2–4, rarely distal paired in larger specimens
Female antenna 2 article 5 distal process	Without	Without	Small	Small	Small	Small	Small	Without	Small	Without	Small	Small	Small	Small

References	Chevreaux, 1908 – Original female description	Chevreaux & Fage, 1925 – Original male description	Poisson & Legueux, 1926	Shoemaker, 1947	Hurley, 1954	Bousfield, 1973	Lincoln, 1979	Ruffo ed., 1989	Bousfield & Hoover, 1997 (after Bousfield, 1973)	Ren, 2006	Joung & Kim, 2007	Hossain & Hughes, 2016	Demicheli & Verdi, 2018	Present study
Female antenna	1	1	0?	1	1	1	1	1–2	1	0–1	0	1	0?	1
2 article 5 ventral robust setae														
Gn2 dactylus number of ventral teeth	No data	2	No data	2	3	2	No data	2	2	2	2	2	2	2–3
Uropod 1 inscription	Ventral	Ventral	Ventral	Ventral	Ventral	Ventral	Ventral	Ventral	Ventral	Ventral	Ventral	Ventral	Lateral	Ventral

and Sauriau (2019) for species characterized by having urosome segments fused with uropod 1 arising mainly ventrally; they suggested that *Hirayamaia tridentia* (Hirayama, 1986) should be changed to *Apocorophium tridentia* and a partially revised key was proposed.

Apocorophium identification key

Based on the original descriptions of *Apocorophium* species, the authors proposed a world key to adults of *Apocorophium* species (*Hirayamaia tridentia* is herein mentioned as *Apocorophium tridentia*; female of *A. louisianum* was not included in the present key due to lack of description).

- 1 Female specimen.....2
- Male specimen.....6
- 2 Female antenna 2 peduncular article 4 with distal process.....3
- Female antenna 2 peduncular article 4 without distal process4
- 3 Female antenna 1 peduncular article 1 with 1 ventral and without dorsomedial robust setae; antenna 2 peduncular article 4 without robust setae; pereopods 3 and 4 dactylus shorter than propodus and carpus combined.....
.....*A. lacustre* (Vanhöffen, 1911)*
- Female antenna 1 peduncular article 1 with 2 ventral and without dorsomedial robust setae; antenna 2 peduncular article 4 with 1 robust seta; pereopods 3 and 4 dactylus longer than propodus and carpus combined
.....*A. simile* (Shoemaker, 1934)
- 4 Female antenna 2 peduncular article 4 with pairs of robust setae
.....*A. tridentia* (Hirayama, 1986)
- Female antenna 2 peduncular article 4 with row of single robust setae (can be a distal pair for larger specimens)5
- 5 Female antenna 2 peduncular article 4 with 4 robust setae on ventral margin and 6 robust setae on dorsomedial margin
.....*A. curumim* Valério-Berardo & Thiago de Souza, 2009
- Female antenna 2 peduncular article 4 with 2 to 4 robust setae on ventral margin, without robust setae on dorsomedial margin.....
.....*A. acutum* (Chevreux, 1908)
- 6 Male antenna 1 peduncular article 1 with proximomedial tubercule; antenna 2 peduncular article 5 without median process
.....*A. louisianum* (Shoemaker, 1934)
- Male antenna 1 peduncular article 1 without proximomedial tubercule; antenna 2 peduncular article 5 with median process7
- 7 Male antenna 2 peduncular article 4 with robust setae on inner face.....8
- Male antenna 2 peduncular article 4 without robust setae on inner face.....9

* based on original description and redescription from Bousfield 1973.

- 8 Male antenna 1 peduncular segment 1 with 2 ventral and no dorsomedial robust setae; antenna 2 peduncular segment 5 without distal process.....
.....*A. simile* (Shoemaker, 1934)
- Male antenna 1 peduncular segment 1 with 2 to 4 ventral and 1 or 2 dorso-medial robust setae; antenna 2 peduncular segment 5 with distal process.....
.....*A. acutum* (Chevreux, 1908)
- 9 Male antenna 1 peduncular article 1 with 2 robust setae on dorsomedial margin; rostrum papillate.....*A. tridentia* (Hirayama, 1986)
- Male antenna 1 peduncular article 1 with 0 or 1 robust seta on dorsomedial margin; rostrum triangular..... **10**
- 10 Male antenna 1 peduncular article 1 without robust setae on dorsomedial margin; uropod 3 rami shorter than peduncle..... *A. lacustre* (Vanhöffen, 1911)
- Male antenna 1 peduncular article 1 with 1 robust seta on dorsomedial margin; uropod 3 rami subequal to peduncle.....
..... *A. curumim* Valério-Berardo & Thiago de Souza, 2009

Ecological notes

Apocorophium acutum is a tube-dwelling amphipod living subtidally to 360 m, but usually between 0 and 5 m, in brackish water, in channels, on open coasts, in estuaries, and in harbors. It occurs on sponges, algae, roots of *Laminaria* J.V. Lamouroux, 1813, ascidians, hydrozoa, with coralline, oysters and *Sabellaria* Lamarck, 1818 reef, in the fouling of man-made installations (buoys, pilings, floating pontoons) (Chevreux 1908; Chevreux and Fage 1925; Poisson and Legueux 1926; Salfi 1939; Bousfield 1973; Myers 1982; Barnard and Karaman 1991; Bousfield and Hoover 1997; present paper).

Ovigerous females have been recorded in December in Suez Canal (Schellenberg 1928), between June and September in New England (USA) (Bousfield 1973); in February, March, May, July to November in British waters (Crawford 1937), and in February in Trébeurden. In Arcachon Bay (present study), examination of specimens showed presence of ovigerous females in April, May, August, October to February, and sexual maturity is reached over 1.7 mm in males and over 2.2 mm in females.

Conclusion

The concept of cosmopolitan species is increasingly questioned. Such species are often found to be species with incomplete, early descriptions. Their redescription highlights the presence of new species, often supported by genetic analyses. The redescription of *Apocorophium acutum* was necessary in order to avoid misidentification. The molecular description of specimens from the French coast is considered to be identical to that of the type locality due to morphological similarities, but a species complex cannot be excluded until specimens from Bônes have been sequenced.

Acknowledgements

The authors want to thank L. Corbari and P. Martin-Lefevre (MNHN, Direction des collections, Paris, France) for the loan of the Chevreaux collection specimens and for their help with depositing our specimens in the MNHN, and G. Droual (IFREMER, Plouzané, France) for the specimens collected in Brittany. Finally, the authors want to thank the crew of the Arcachon marine station boat *Planula IV*. This paper was improved by constructive comments from Robert Forsyth (ZooKeys, Copy editor), Anne Helene S. Tandberg (University of Bergen, Norway) and Rachael Peart (National Institute of Water and Atmospheric Research, New Zealand).

References

- Bachelet G, Dauvin JC, Sorbe JC (2003) An updated checklist of marine and brackish water Amphipoda (Crustacea: Peracarida) of the southern Bay of Biscay (NE Atlantic). *Cahiers de Biologie Marine* 44: 121–151.
- Bano H, Kazmi QG (2012) A checklist of marine amphipods of Pakistan. *Fuuast Journal of Biology* 2: 113–116.
- Barnard JL (1969) Gammaridean Amphipoda of the rocky intertidal of California: Monterey Bay to La Jolla. *United States National Museum Bulletin* 258: 1–230. <https://doi.org/10.5479/si.03629236.258.1>
- Barnard JL, Karaman GS (1991) The families and genera of marine gammaridean Amphipoda (except marine gammaroids). Part 1. *Records of the Australian Museum, Supplement* 13(1): 1–417. <https://doi.org/10.3853/j.0812-7387.13.1991.91>
- Bousfield EL (1973) *Shallow-water Gammaridean Amphipoda of New England*. Cornell University Press, Ithaca.
- Bousfield EL, Hoover PM (1997) The amphipod superfamily Corophioidea on the Pacific coast of North America. Part V. Family Corophiidae: Corophiinae, new subfamily. *Systematics and distributional ecology. Amphipacifica* 2: 67–139.
- Chevreaux E (1908) Sur trois nouveaux amphipodes méditerranéens appartenant au genre *Corophium* Latreille. *Bulletin de la Société Zoologique de France* 33: 69–75. <https://doi.org/10.5962/bhl.part.19156>
- Chevreaux E (1910) Note sur les crustacés amphipodes d'Algérie et de Tunisie. *Bulletin de la Société d'Histoire Naturelle de l'Afrique du Nord* 1(9): 135–137.
- Chevreaux E, Fage L (1925) Amphipodes. *Faune de France* 9. Lechevalier, Paris.
- Crawford GI (1937) A review of the amphipod genus *Corophium* with notes on the British species. *Journal of the Marine Biological Association of the United Kingdom* 21: 589–630. <https://doi.org/10.1017/S0025315400053753>
- Dickinson JJ, Wigley RL, Brodeur RD, Brown-leger S (1980) Distribution of gammaridean Amphipoda (Crustacea) in the Middle Atlantic Bight region. NOAA Technical Report. N.M.F.S. S.S.R.F., 741, 46 pp.

- Demicheli A, Verdi A (2018) First record of *Apocorophium acutum* (Chevreux, 1908) (Amphipoda, Corophiidae, Corophiinae) from Uruguay, with notes on the biology and distribution. Check List 14(6): 1169–1173. <https://doi.org/10.15560/14.6.1169>
- Gouillieux B, Sauriau PG (2019) *Laticorophium baconi* (Shoemaker, 1934) (Crustacea: Amphipoda: Corophiidae: Corophiini): first record in European marine waters. BioInvasions Records 8(4): 848–861. <https://doi.org/10.3391/bir.2019.8.4.13>
- Hirayama A (1986) Marine gammaridean amphipoda (Crustacea from Hong Kong: the family Corophiidae, genus *Corophium*. In: Morton B (Ed.) Proceedings of the Second International Marine Biological Workshop: the marine fauna and flora of Hong Kong and southern China. Hong Kong University Press, Hong Kong, 449–484.
- Horton T, Lowry J, De Broyer C, Bellan-Santini D, Coleman CO, Corbari L, Costello MJ, Daneliya M, Dauvin JC, Fišer C, Gasca R, Grabowski M, Guerra-García JM, Hendrycks E, Hughes L, Jaume D, Jazdzewski K, Kim YH, King R, Krapp-Schickel T, LeCroy S, Lörz AN, Mamos T, Senna AR, Serejo C, Sket B, Souza-Filho JF, Tandberg AH, Thomas J, Thurston M, Vader W, Väinölä R, Vonk R, White K, Zeidler W (2021) World Amphipoda Database. *Apocorophium* Bousfield & Hoover, 1997. World Register of Marine Species. <http://www.marinespecies.org/aphia.php?p=taxdetails&id=148593> [Accessed on 2019-02-22]
- Hollander M, Wolfe DA (1973) Nonparametric Statistical Methods. John Wiley & Sons, New York.
- Hossain MB, Hughes L (2016) New species *Victoriopisa bruneiensis* and *Apocorophium acutum* (Chevreux, 1908) from Brunei (Crustacea: Peracarida: Amphipoda). Zootaxa 4117(3): 375–386. <https://doi.org/10.11646/zootaxa.4117.3.5>
- Hurley DE (1954) Studies on the New Zealand Amphipodan fauna. 7. The family Corophiidae, including a new species of *Paracorophium*. Transactions of the Royal Society of New Zealand 82: 431–460.
- Jung JW, Kim W (2007) *Apocorophium acutum* (Crustacea: Amphipoda: Corophiidae), newly recorded corophiid species in Korea. Animal Systematics, Evolution and Diversity 23(2): 247–250. <https://doi.org/10.5635/KJSZ.2007.23.2.247>
- Lamarck JB (1818) Histoire Naturelle des Animaux sans Vertèbres, présentant les caractères généraux et particuliers de ces animaux, leur distribution, leurs classes, leurs familles, leurs genres, et la citation des principales espèces qui s’y rapportent; precedes d’une Introduction offrant la détermination des caractères essentiels de l’Animal, sa distinction du végétal et des autres corps naturels, enfin, l’exposition des principes fondamentaux de la zoologie. Paris, Deterville, 5, 612 pp.
- Lamouroux JVF (1813) Essai sur les genres de la famille des thalassiphytes non articulées. Annales du Muséum d’Histoire Naturelle [Paris], 20, 21–47, 115–139, 267–293.
- Latreille PA (1816) Amphipoda. In: Nouveau dictionnaire d’Histoire naturelle, appliquée aux Arts, à l’Agriculture, à l’Économie rurale et domestique, à la Médecine, etc. Par une société de Naturalistes et d’Agriculteurs. Vol. 1. 2nd Edn. Deterville, Paris, 467–469.
- Leach WE (1814) Crustaceology. The Edinburgh Encyclopaedia 7: 383–437.
- Lincoln RJ (1979) British Marine Amphipoda: Gammaridea. British Museum (Natural History), London, 658 pp.

- Linnaeus C (1758) *Systema Naturae per regna tria naturae, secundum classes, ordines, genera, species, cum characteribus, differentiis, synonymis, locis*. Editio decima, reformata, 1. Laurentius Salvius: Holmiae, 824 pp. <https://doi.org/10.5962/bhl.title.542>
- Lowry JK, Myers AA (2013) A phylogeny and classification of the Senticaudata subord. nov. (Crustacea: Amphipoda). *Zootaxa* 3610(1): 1–80. <https://doi.org/10.11646/zootaxa.3610.1.1>
- Lowry JK, Stoddart HE (2003) Crustacea: Malacostraca: Peracarida: Amphipoda, Cumacea, Mysidacea (Vol. 19.2B). CSIRO Publishing, Melbourne, Australia.
- Myers AA (1982) Family Corophiidae. In: Ruffo S (Ed.) *The Amphipoda of the Mediterranean*. Part 1. Gammaridea (Acanthonotozomatidae to Gammaridea). *Mémoires de l'Institut Océanographique* 13: 185–208.
- Myers AA, Lowry JK (2003) A phylogeny and a new classification of the Corophiidea Leach, 1814 (Amphipoda). *Journal of Crustacean Biology* 23: 443–485. <https://doi.org/10.1163/20021975-99990353>
- Poisson R, Legueux ML (1926) Notes sur les crustacés amphipodes I Crustacés amphipodes marins littoraux de la zone dite du «trottoir» des environs de Banyuls-sur-mer. II. Etude comparée du *Corophium acutum* Chevreux et d'un *Corophium* d'eau saumâtre du canal de Caen. *Bulletin de la Société Zoologique de France* 51: 314–325.
- Ren X (2006) Crustacea, Amphipoda, Gammaridea. *Fauna Sinica Invertebrata* 41: 558.
- Ruffo S (1938) Studi sui crostacei anfipodi, VIII: gli anfipodi marini del Museo Civico di Storia Naturale di Genova, (a) gli anfipodi del Mediterraneo. *Annali del Museo Civico di Storia Naturale di Genova* 60: 127–151.
- Salfi M (1939) Ricerche etologiche ed ecologiche sugli Anfipodi tubicoli del canale delle Saline di Cagliari. *Archivio Zoologico Italiano* 27: 31–62.
- Schellenberg A (1928) Report on Amphipoda. Zoological results of the Cambridge Expedition to the Suez Canal. *Transactions of the Zoological Society of London* 22: 633–692. <https://doi.org/10.1111/j.1096-3642.1928.tb00209.x>
- Shoemaker CR (1934) The amphipod genus *Corophium* on the east coast of America. *Proceedings of the Biological Society of Washington* 47: 23–32.
- Shoemaker CR (1947) Further notes on the amphipod genus *Corophium* from the east coast of America. *Journal of the Washington Academy of Sciences* 37(2): 47–63.
- Valério-Berardo MT, Thiago de Souza AMT (2009) Description of two new species of the Corophiidae (Amphipoda, Crustacea) and register of *Laticorophium baconi* (Shoemaker, 1934) from Brazilian waters. *Zootaxa* 2215: 55–68. <https://doi.org/10.5281/zenodo.189937>
- Vanhoffen E (1911) Beiträge zur Kenntnis der Brackwasserfauna im Frischen Haff. *Sitzungsberichte Gesellschaft Naturforschung Freunde, Berlin* 9: 399–405.