



HAL
open science

Cytokinin in action is linked to oxidative stress as shown by proteome analysis in *Arabidopsis*

P Vanova, François Chevalier, V Rofidal, M Rossignol, J Malbeck, O Novak, B Brzobohaty

► **To cite this version:**

P Vanova, François Chevalier, V Rofidal, M Rossignol, J Malbeck, et al.. Cytokinin in action is linked to oxidative stress as shown by proteome analysis in *Arabidopsis*. 19th annual meeting of the International Plant growth substance Association, Jul 2007, Puerto Vallarta, Mexico. <hal-04239178>

HAL Id: hal-04239178

<https://hal.science/hal-04239178v1>

Submitted on 18 Oct 2023

HAL is a multi-disciplinary open access archive for the deposit and dissemination of scientific research documents, whether they are published or not. The documents may come from teaching and research institutions in France or abroad, or from public or private research centers.

L'archive ouverte pluridisciplinaire **HAL**, est destinée au dépôt et à la diffusion de documents scientifiques de niveau recherche, publiés ou non, émanant des établissements d'enseignement et de recherche français ou étrangers, des laboratoires publics ou privés.



HAL Authorization

Pavlina Váňová^{1,2}, François Chevalier³, Valérie Rofidal³, Michel Rossignol³, Jiří Malbeck⁴, Ondřej Novák⁵, Břetislav Brzobohatý^{1,2}

¹Department of Molecular Biology and Radiobiology, Mendel University of Agriculture and Forestry, CZ-61300 Brno, Czech Republic; ²Institute of Biophysics AS CR, CZ-61265 Brno, Czech Republic; ³Unité de Protéomique, INRA Montpellier, FR-34060 Montpellier, France; ⁴Institute of Experimental Botany AS CR, CZ-16502 Prague, Czech Republic; ⁵Laboratory of Growth Regulators, Palacký University and Institute of Experimental Botany AS CR, CZ-78371 Olomouc, Czech Republic

I. Introduction

Cytokinins (CKs) regulate diverse developmental processes in plants. The molecular mechanisms of CK action are currently the subject of intense research. We analyzed changes in the *Arabidopsis* proteome caused by increase in endogenous CKs which was achieved by the employment of an improved pOp-*ipt*/LhGR transgenic system in which the production of CKs is inducible by dexamethasone (DEX) (Craft et al., 2005).

II. Results

1. Plant material



Fig. 1: Wild-type Columbia 0 (Col; control) and a transgenic pOp-*ipt*/LhGR line (*ipt*) grown for 15 days on MS medium in the absence and presence of 2.5 μ M DEX, at 16h light/8h dark; 21 °C day/19 °C night; light intensity 117 μ mol.m⁻².s⁻¹.

2. Quantitative analysis of CKs

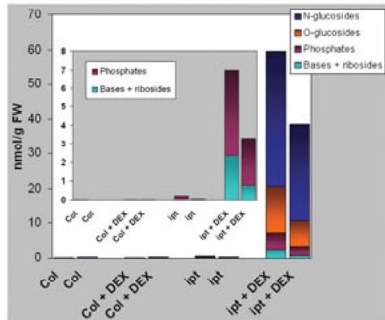


Fig. 2: CKs extracted by methanol/chloroform/acetic acid and purified on RP-C18 columns were quantified by LC/MS using deuterated CKs as internal standards. Samples were analysed in duplicates.

3. Two-dimensional (2-D) electrophoresis

2-D electrophoresis was performed as follows: IPG strips pH 4-7; 500 μ g protein/strip; 11% SDS-PA gel; colloidal Coomassie G250 staining.

Analysis of gel images in triplicates and subsequent statistical evaluation revealed significant differences between protein maps from DEX treated and non-treated pOp-*ipt*/LhGR seedlings (Fig. 3). No significant effects of DEX on wild-type protein maps were observed.

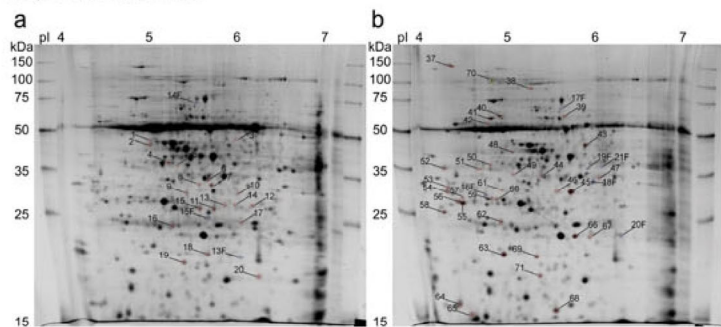


Fig. 3: Protein maps of pOp-*ipt*/LhGR seedlings grown in the absence (a) and presence (b) of 2.5 μ M DEX; numbers indicate the significantly overexpressed spots.

4. Protein identification and functional classification

Total of 62 differentially expressed spots were subjected to MALDI-TOF MS analysis; 58 of them were characterized: 2 specific, 35 upregulated, 19 downregulated and 2 absent in gels from DEX treated pOp-*ipt*/LhGR plants (Table 1). The identified proteins were classified into functional categories (Fig. 4).

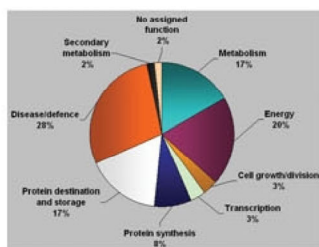


Fig. 4: Assignment of the differentially expressed proteins to functional categories according to Bevan et al. (1998).

Regulation	Spot	Protein
Up	45	Jasmonate inducible protein isolog
	18F	2'-hydroxyisoflavone reductase
	37	Cor78 protein
	20F	Glutathione-S-transferase
	43	S-adenosylmethionine synthase
	66	GSH-dependent dehydroascorbate reductase
Down	13	L-ascorbate peroxidase
	10	Probable ethylene-inducible protein

Table 1: Abbreviated list of differentially expressed proteins.

Validity of 2-D analysis results, particularly the high proportion of defence and oxidative stress related proteins, was examined by the following experiments:

5. Quantitative analysis of jasmonic acid (JA)

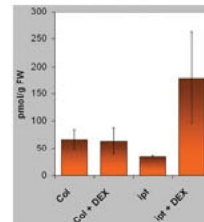


Fig. 5: Content of JA as quantified by LC/MS.

6. Localization of hydrogen peroxide

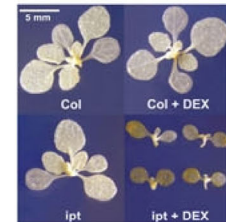


Fig. 6: Chromogenic detection of H₂O₂ in plant tissues by diaminobenzidine (DAB) staining (2.5 mM/2 h).

7. Assays for antioxidant enzymes

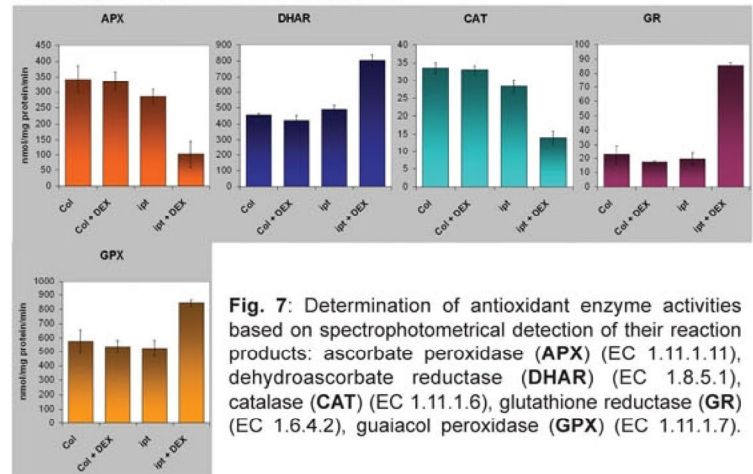


Fig. 7: Determination of antioxidant enzyme activities based on spectrophotometrical detection of their reaction products: ascorbate peroxidase (APX) (EC 1.11.1.11), dehydroascorbate reductase (DHAR) (EC 1.8.5.1), catalase (CAT) (EC 1.11.1.6), glutathione reductase (GR) (EC 1.6.4.2), guaiacol peroxidase (GPX) (EC 1.11.1.7).

8. Reduced glutathion (GSH) treatment

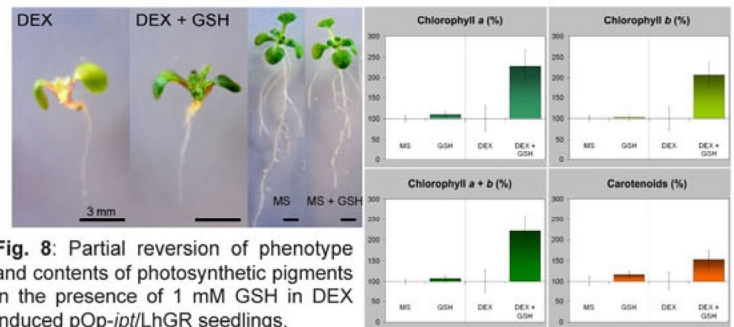


Fig. 8: Partial reversion of phenotype and contents of photosynthetic pigments in the presence of 1 mM GSH in DEX induced pOp-*ipt*/LhGR seedlings.

III. Summary

- 2-D electrophoresis as a top-down approach is a suitable tool for identifying candidates related to CK action on the protein level.
- High proportion of the differentially expressed proteins were related to oxidative stress and defense mechanisms including JA inducible proteins.
- Subsequent analyses revealed increased levels of hydrogen peroxide and JA in seedlings with elevated CKs together with significant changes in activity of several antioxidant enzymes.
- Application of reduced glutathion, an antioxidant, partially reversed the adverse effects caused by high CK levels (i.e. retarded development and contents of photosynthetic pigments).
- The data demonstrate a link between CKs and oxidative stress at the proteome level, implying cross-talk between CKs and JA in planta.

References:
Bevan M, et al. (1998) *Nature* 391:485-488
Craft J, et al. (2005) *Plant J* 41:899-918

Supported by grants Nos. 1M06030, MSM143100008 and AVOZ50040507 and by the scholarship IN-CO Czech 2002-04 within the Leonardo da Vinci programme.