



**HAL**  
open science

## Errors and uncertainties in a gridded carbon dioxide emissions inventory

Tomohiro Oda, Rostyslav Bun, Vitaliy Kinakh, Petro Topylko, Mariia Halushchak, Gregg Marland, Thomas Lauvoux, Matthias Jonas, Shamil Maksyutov, Zbigniew Nahorski, et al.

### ► To cite this version:

Tomohiro Oda, Rostyslav Bun, Vitaliy Kinakh, Petro Topylko, Mariia Halushchak, et al.. Errors and uncertainties in a gridded carbon dioxide emissions inventory. *Mitigation and Adaptation Strategies for Global Change*, 2019, 24 (6), pp.1007 - 1050. 10.1007/s11027-019-09877-2 . hal-04238492

**HAL Id: hal-04238492**

**<https://hal.science/hal-04238492>**


Submitted on 12 Oct 2023

**HAL** is a multi-disciplinary open access archive for the deposit and dissemination of scientific research documents, whether they are published or not. The documents may come from teaching and research institutions in France or abroad, or from public or private research centers.

L'archive ouverte pluridisciplinaire **HAL**, est destinée au dépôt et à la diffusion de documents scientifiques de niveau recherche, publiés ou non, émanant des établissements d'enseignement et de recherche français ou étrangers, des laboratoires publics ou privés.



# Errors and uncertainties in a gridded carbon dioxide emissions inventory

Tomohiro Oda<sup>1,2</sup> · Rostyslav Bun<sup>3,4</sup> · Vitaliy Kinakh<sup>3</sup> · Petro Topylko<sup>3</sup> ·  
Mariia Halushchak<sup>3,5</sup> · Gregg Marland<sup>6</sup> · Thomas Lauvaux<sup>7</sup> · Matthias Jonas<sup>5</sup> ·  
Shamil Maksyutov<sup>8</sup> · Zbigniew Nahorski<sup>9,10</sup> · Myroslava Lesiv<sup>5</sup> · Olha Danylo<sup>3,5</sup> ·  
Joanna Horabik-Pyzel<sup>9</sup> 

Received: 21 January 2019 / Accepted: 10 June 2019 / Published online: 23 July 2019  
© The Author(s) 2019

## Abstract

Emission inventories (EIs) are the fundamental tool to monitor compliance with greenhouse gas (GHG) emissions and emission reduction commitments. Inventory accounting guidelines provide the best practices to help EI compilers across different countries and regions make comparable, national emission estimates regardless of differences in data availability. However, there are a variety of sources of error and uncertainty that originate beyond what the inventory guidelines can define. Spatially explicit EIs, which are a key product for atmospheric modeling applications, are often developed for research purposes and there are no specific guidelines to achieve spatial emission estimates. The errors and uncertainties associated with the spatial estimates are unique to the approaches employed and are often difficult to assess. This study compares the global, high-resolution (1 km), fossil fuel, carbon dioxide (CO<sub>2</sub>), gridded EI Open-source Data Inventory for Anthropogenic CO<sub>2</sub> (ODIAC) with the multi-resolution, spatially explicit bottom-up EI geoinformation technologies, spatio-temporal approaches, and full carbon account for improving the accuracy of GHG inventories (GESAPU) over the domain of Poland. By taking full advantage of the data granularity that bottom-up EI offers, this study characterized the potential biases in spatial disaggregation by emission sector (point and non-point emissions) across different scales (national, subnational/regional, and urban policy-relevant scales) and identified the root causes. While two EIs are in agreement in total and sectoral emissions (2.2% for the total emissions), the emission spatial patterns showed large differences (10–100% relative differences at 1 km) especially at the urban-rural transitioning areas (90–100%). We however found that the agreement of emissions over urban areas is surprisingly good compared with the estimates previously reported for US cities. This paper also discusses the use of spatially explicit EIs for climate mitigation applications beyond the common use in atmospheric modeling. We conclude with a discussion of current and future challenges of EIs in support of successful implementation of GHG emission

---

✉ Joanna Horabik-Pyzel  
Joanna.Horabik@ibspan.waw.pl

monitoring and mitigation activity under the Paris Climate Agreement from the United Nations Framework Convention on Climate Change (UNFCCC) 21st Conference of the Parties (COP21). We highlight the importance of capacity building for EI development and coordinated research efforts of EI, atmospheric observations, and modeling to overcome the challenges.

**Keywords** Greenhouse gas emission · Emission inventory · Carbon dioxide · Carbon cycle · Uncertainty analysis · Climate mitigation · Remote sensing · Monitoring · Reporting and verification · Paris Agreement

## 1 Introduction

Emission inventories (EIs) are the fundamental tool to quantify the amount of man-made emissions, such as those of greenhouse gases (GHGs) and other air pollutants, and to keep track of their changes over time. For GHGs, nationally reported EIs are generally compiled following the guidelines prepared by the Intergovernmental Panel on Climate Change (IPCC) (e.g., IPCC 2006). Emissions are reported by countries in order to monitor international compliance of GHG reductions (e.g., under the Kyoto Protocol or Paris Agreement). National EIs are primarily based on statistical data (e.g., on fuel production, consumption, and trade data), and emission estimates are often made at the national scale by economic sector or by fuel type. The IPCC Guidelines provide “best practice” to compile EIs in a consistent manner, regardless of the data availability in different countries. The uncertainties associated with national estimates for fossil fuel carbon dioxide (CO<sub>2</sub>) emissions (FFCO<sub>2</sub>) are often relatively small, especially for developed countries (e.g.,  $\pm 4\%$  for the USA). However, the uncertainty reported with EIs often serves as an indicator for the level of confidence, rather than for the accuracy (Jonas et al. 2010). As previously discussed in Liberman et al. (2007), White et al. (2011), and Ometto et al. (2015), studying the variety of sources of errors and uncertainties is crucial in order to make EIs more robust and accurate for providing science-based guidance to global climate mitigation.

Adding an atmospheric, observational (top-down) constraint on statistically based emission estimates (bottom-up) should help improve the accuracy of emission estimates and provide a verification support to the current global GHG monitoring framework (e.g., Nisbet and Weiss 2010; Pacala et al. 2010; Ciais et al. 2015; Pinty et al. 2017). Because the effective spatial and temporal resolution of emissions estimates depends highly on the availability of observational data and the model reproducibility, how top-down approaches can play a role in the bottom-up vs. top-down exercise cannot be easily generalized (see Ciais et al. 2010). However, the increased volume of recent atmospheric CO<sub>2</sub> data collected from intensive urban observation networks (e.g., Lauvaux et al. 2016 for Indianapolis; Staufer et al. 2016 for Paris; Verhulst et al. 2017 for Los Angeles; Martin et al. 2018 for Baltimore-Washington area) and the recently available carbon observing satellites, such as the Japanese Greenhouse gases Observing SATellite (GOSAT, Yokota et al. 2009) and NASA’s Orbiting Carbon Observatory-2 (OCO-2, Crisp et al. 2017), have placed us in a better position to implement bottom-up vs. top-down analyses at policy-relevant scales. For example, Lauvaux et al. (2016) developed a state-of-the-art, high-resolution atmospheric inversion system that demonstrated the feasibility of a top-down approach at a city scale, and confirmed the bottom-up emission estimates. Vogel et al. (2013) also demonstrated the use of radiocarbon measurements to detect potential biases in a bottom-up EI.

In such bottom-up vs. top-down exercises, bottom-up emission estimates generally need to be given in a spatially explicit form (e.g., gridded EIs). In fact, both Lauvaux et al. (2016) and Vogel et al. (2013) employed locally constructed, fine-grained, spatially explicit EIs for their atmospheric CO<sub>2</sub> model simulations (1.3-km resolution for Lauvaux et al. (2016) and 5-km for Vogel et al. (2013)). The Hestia inventory, which was used by Lauvaux et al. (2016), is based on a multi-resolution emission modeling approach and emission estimates are achieved at the resolution of emission sources of interest (e.g., point, line, and area sources). The multi-resolution, bottom-up approach makes Hestia unique compared with spatially explicit EIs that are based on spatial disaggregation of national or regional emission estimates (e.g., Andres et al. 1996; Janssens-Maenhout et al. 2012, 2017, Rayner et al. 2010; Oda and Maksyutov 2011). While the multi-resolution modeling approach is considered to be the best approach to achieve emission estimates at policy-relevant scales, their development is extremely labor-intensive and such EIs are only available for limited places and times. A few other spatially explicit EIs that employ a multi-resolution modeling approach (e.g., Gurney et al. 2012; Bun et al. 2018; Mori et al. 2015) also share these difficulties, and none of them cover the full globe to support global climate mitigation. It is important to note that large-scale, top-down GHG emission verification support systems, such as the one proposed by Pinty et al. (2017), assume the use of a disaggregation-based EI such as the Emission Database for Global Atmospheric Research (EDGAR, Janssens-Maenhout et al. 2012, 2017), not of the detailed bottom-up estimates based on multi-resolution modeling.

A challenge for top-down monitoring systems is to achieve accurate, disaggregated, subnational emission estimates from national-level emission estimates. The spatial disaggregation is often an independent process from the regular, bottom-up, national EI compilation defined by the IPCC (2006). However, the uncertainty evaluation of spatially disaggregated emission estimates, especially for diffused (area) emission fields obtained with proxy approaches, is challenging, primarily due to the lack of physical measurements (e.g., Andres et al. 2016; Oda et al. 2018). To achieve accurate estimates, errors and uncertainties due to the emission disaggregation process need to be quantified and the error/uncertainty characterization needs to be incorporated into the top-down estimation (e.g., Rayner et al. 2010; Lauvaux et al. 2016; Oda et al. 2017). In principle, spatial patterns in disaggregated emission estimates, and their changes in time, are driven by changes in the total emissions and in the spatial patterns in proxy data. Thus, the changes in disaggregated emission estimates might not be accurately reflecting actual changes in emission. Given the requirements for useful emission estimates suggested by Ciais et al. (2015) (e.g., 1-km spatial resolution and hourly temporal resolution) and the labor expected for these detailed bottom-up EIs, the use of disaggregation-based EIs for climate mitigation analyses still remains valid. To successfully use disaggregated emissions to monitor emissions changes at subnational levels in a verification support system, we need to characterize the biases in disaggregated emission fields at different spatial levels of disaggregation, such as countries, provinces/states, and cities.

The Open-source Data Inventory for Anthropogenic CO<sub>2</sub> (ODIAC, Oda and Maksyutov 2011; Oda et al. 2018) is so far the only global, spatially explicit EI data product that meets the requirements of Ciais et al. (2015). ODIAC is based on disaggregation of national FFCO<sub>2</sub> estimates made by the Carbon Dioxide Information Analysis Center (CDIAC) at the Oak Ridge National Laboratory (ORNL) and projections (Oda et al. 2018). Since its establishment in 2009, ODIAC has been intensively used for global and regional atmospheric inversions (e.g., Takagi et al. 2011; Maksyutov et al. 2013; Saeki et al. 2013; Thompson et al. 2016; Feng et al. 2016a; Shirai et al. 2017). ODIAC



has been also used for regional- to urban-scale studies because of the high-spatial resolution (e.g., Ganshin et al. 2012; Oda et al. 2013; Brioude et al. 2013; Wong et al. 2016; Lauvaux et al. 2016; Oda et al. 2017; Ye et al. 2017; Wu et al. 2018; Martin et al. 2018; Hedelius et al. 2018). The fair agreement with local estimates and atmospheric CO<sub>2</sub> model reproducibility support the utility of ODIAC subnational emissions at regional to urban scales; however, it is yet unclear how well ODIAC subnational emissions are reflecting the true emission dynamics at policy-relevant spatial scales.

This study evaluates the ODIAC high-resolution emission fields by comparing them with a locally developed, fine-grained EI, the geoinformation technologies, spatio-temporal approaches, and full carbon account for improving the accuracy of GHG inventories (GESAPU, Bun et al. 2018; Charkovska et al. 2019). GESAPU is based on a multi-resolution approach and the domain of Poland. By taking full advantage of GESAPU emission fields, we characterize the biases and uncertainties in ODIAC over the course of spatial resolution from the national level (zero disaggregation), subnational, and city to the native 1-km grid scale of ODIAC. Following the “Data and methods” section, we compare ODIAC with GESAPU by emission sectors (point and non-point sources of emissions as defined in ODIAC) at different levels of disaggregation (national, province, city, and native 1-km grid) (“Results” section). In the “Discussions” section, we discuss the current limitations, and challenges in emission data studies (e.g., development and evaluation) and how we could potentially overcome them. We also respond to general questions about the merger of bottom-up and top-down approaches. We conclude this paper with some recommendations to establish a good, meaningful EI-based framework for international agreements on emissions limits.

## 2 Data and methods

### 2.1 Emissions data

This subsection describes the two spatially explicit CO<sub>2</sub> emission data used in this study: (1) the Open-source Data Inventory for Anthropogenic CO<sub>2</sub> (ODIAC, Oda et al. 2010, 2018; Oda and Maksyutov 2011, 2015) and (2) the geoinformation technologies, spatio-temporal approaches, and full carbon account for improving the accuracy of GHG inventories (GESAPU, Bun et al. 2018; Charkovska et al. 2018, 2019; Danylo et al. 2019). Table 1 compares the specifications of ODIAC and GESAPU. Figure 1 shows the two estimates of CO<sub>2</sub> emissions from fossil fuel use in Poland during 2010, presented at a common 1-km domain.

#### 2.1.1 ODIAC global 1-km emission data product

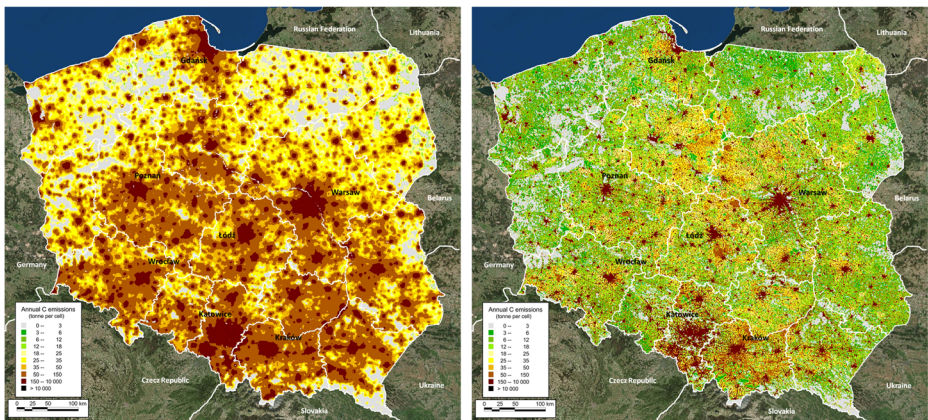
ODIAC is a global, high-resolution (1 × 1 km) monthly, a gridded emission data product that is based on the spatial disaggregation of country total emissions estimates (e.g., Oda and Maksyutov 2011; Oda et al. 2018). The ODIAC first introduced the combined use of point source information for large point sources and satellite-observed nightlight data for global emission spatial disaggregation in order to achieve emission spatial distributions. The current ODIAC data product is based on country-level emission estimates made by CDIAC/ORNL, which consists of CO<sub>2</sub> emission estimates from fuel use (coal, oil, and gas), cement production, and gas flaring (e.g., Marland and Rotty 1984). CO<sub>2</sub> emissions

**Table 1** A brief summary of ODIAC and GESAPU. Note the latest, year 2018 version, of the ODIAC data (ODIAC2018, 2000–2017) is available from <http://db.egernies.go.jp/dataset/ODIAC/>. The GESAPU data have been provided as a part of Bun et al. (2018) (see Supplementary Material in Bun et al. 2018)

	ODIAC (version 2016)	GESAPU
Geographical coverage	Global	Poland and Ukraine
Best gridded spatial resolution	1 × 1 km <sup>a</sup>	100 × 100 m
Temporal coverage	2000–2015 <sup>b</sup>	2010
Temporal resolution	Monthly	Annual
Compounds of interest	CO <sub>2</sub>	CO <sub>2</sub> , CH <sub>4</sub> , N <sub>2</sub> O, NMVOCs, and SO <sub>2</sub>
Emission sectors	Defined by fuel type	Defined as in IPCC (2006)
Emission calculation	CDIAC approach (Marland and Rotty, 1984)	IPCC guideline (IPCC, 2006)
Emission spatial distributions	Downscaled with point source information and nighttime	Achieved by a multi-resolution (point, line, and area) approach
References	Oda and Maksyutov (2011); Oda et al. (2018)	Bun et al. (2018); Charkovska et al. (2019).

<sup>a</sup> The actual resolution is 30 arcsec. Thus, the grid size is smaller than 1 km<sup>2</sup> as it goes to higher latitude

<sup>b</sup> The latest version of the ODIAC data product (ODIAC2018) covers 2000–2017



**Fig. 1** ODIAC (left) and GESAPU (right) emissions estimates over the domain of Poland. Emission fields are for the year 2010 and are presented on a common  $1 \times 1$  km domain. Some of GESAPU sectoral emissions that are not indicated by ODIAC are all excluded (see the “Emissions dataset comparison” section). The values are given in the unit of ton carbon per year (tC/year).

from cement production and gas flaring are not due to fossil fuel use; however, those emissions are often included as a part of FFCO<sub>2</sub> by definition (e.g., Andres et al. 2012). The emissions are distributed differently depending on the type of emissions (e.g., point source and non-point source). ODIAC employs the global power plant database CARMA (CARbon Monitoring and Action, [www.carma.org](http://www.carma.org); Wheeler and Ummel 2008; Ummel 2012) to estimate the power plant portion of a country’s total emissions and maps its emissions as point sources. The rest of the emissions (total emissions minus point source emissions) are distributed as an aggregated area source sector using the Defense Meteorological Satellite Program (DMSP) calibrated radiance nightlight product (Ziskin et al. 2010). This study used the version 2016 of the ODIAC data (ODIAC2016, 2000–2015). Oda et al. (2018) describe the details of ODIAC2016 (available from <http://db.cger.nies.go.jp/dataset/ODIAC/>).

### 2.1.2 GESAPU high-definition, bottom-up emission inventory

GESAPU is a fine-grained, spatially explicit bottom-up GHG EI product that covers the domains of Poland and Ukraine, which was developed under the European Union’s 7th Framework Programme (FP7) Marie Curie Actions International Research Staff Exchange Scheme (IRSES) project (No. 247645) (Bun et al. 2018; Charkovska et al. 2018, 2019; Danylo et al. 2019, Kinakh et al. 2018) and is based on earlier studies (Bun et al. 2007, 2010; Boychuk and Bun 2014). We here define GESAPU as a bottom-up EI solely for convenience, also by the EI calculation approach. However, we also distinguish GESAPU from other existing spatially explicit EIs, such as EDGAR (Janssens-Maenhout et al. 2012, 2017), which are also often classified as bottom-up EIs in comparison with top-down atmospheric inversion studies. Many gridded EIs, including ODIAC as mentioned earlier, are based on emission spatial aggregation (e.g., Andres et al. 1996, 2011, 2014, 2016; Kurokawa et al. 2013; Asefi-Najafabady et al. 2014; Janssens-Maenhout et al. 2012, 2017); however, GESAPU employed a multi-resolution, high-definition (HD) emission modeling approach and the emissions are, in

principle, calculated at the individual source level. GESAPU's HD approach is similar to the approach done for US cities by Gurney et al. (2012) and allows us to achieve detailed emission accounting and emission modeling simultaneously at a policy-relevant scale. Where information disaggregation is needed (e.g., diffused sources such as settlements and line sources such as road segments), GESAPU employs high granularity data at the municipality or district level, rather than country-level data. The GESAPU approach, which is an HD approach extended to a country, should help provide constraints on subnational emissions information and reduce potential biases due to the use of large-scale data (e.g., national data) for emission disaggregation. Given the GESAPU emission modeling approach, the authors believe GESAPU is on the complete another side of the spectrum of spatially explicit EI from ODIAC. Thus, the authors expect GESAPU should allow us to thoroughly evaluate a disaggregation-based EI like ODIAC.

GESAPU is based on the best available official statistical data and geospatial information data, which are collected at the best (smallest) possible administrative levels, such as municipalities and districts (Bun et al. 2018). Emission calculations are done according to the IPCC methodology for CO<sub>2</sub>, CH<sub>4</sub>, and N<sub>2</sub>O. Unlike ODIAC that holds its own modified, fuel-based emission categories, emission estimates are obtained for the IPCC-defined sectors and categories. Since GESAPU employs a multi-resolution modeling approach, the resulting emission estimates are accompanied by point locations, lines, and/or the polygon spatial information, rather than a grid point coordinate. GESAPU then is able to seamlessly prepare emission fields at a spatial resolution of interest (up to 100-m resolution) via emission spatial aggregation. The vector emission source maps for all human activity-induced emissions categories covered by the IPCC guidelines were developed, utilizing official company disclosure information available, the administrative boundary maps, the Corine Land Cover map, and other available data. GESAPU also employs the region-specific parameters (e.g., the differentiated characteristics of the fossil fuel used in the energy sector, the climatic conditions and the energy sources available in the residential sector, the species and age composition of forests, and many others) for the emission calculation. Thus, the total GESAPU emissions at aggregated levels, such as province and national levels, should be achieved more precisely than other estimates that are often calculated using national-specific parameters. Other than GHG, GESAPU also indicates non-methane volatile organic compounds (NMVOCs) and air pollutants such as SO<sub>2</sub>. GESAPU data have been provided as a part of Bun et al. (2018) (see Supplementary Material in Bun et al. 2018).

## 2.2 Emissions dataset comparison

### 2.2.1 Emission comparison principles in this study

Comparing gridded EIs has become a common evaluation approach, as seen in previous studies (e.g., Oda et al. 2015; Hutchins et al. 2016; Hogue et al. 2016; Gately and Hutyrá 2017; Oda et al. 2018), with an increasing interest in gridded EI uncertainties. Due to technical difficulties, which will be discussed later in this manuscript, comparisons of gridded EIs often only provide a limited opportunity to partially evaluate the uncertainty of interest and do not offer an objective measure for their accuracy (e.g., Oda et al. 2018). This is a fundamental limitation due to the fact that (1) gridded EIs are often achieved via two independent processes (i.e., emission calculations and emission spatial disaggregation and/or mapping) and (2)

emission estimates at grid level are often not evaluated objectively due to the lack of physical measurements (e.g., Andres et al. 2016, Oda et al. 2015, 2018). Thus, it is very important to clearly define the objective and implementation of the emission comparison and describe limitations.

This study attempts to evaluate the ODIAC global  $1 \times 1$  km gridded emissions over the domain of Poland by comparing it with the GESAPU emissions aggregated to the same 1-km resolution domain. As done in previous studies, such as Hutchins et al. (2016) and Gately and Hutyra (2017), we use a bottom-up EI, which is GESAPU in this study, as a truth. It is primarily because of the fact that GESAPU, as described in the previous section and elsewhere (e.g., Bun et al. 2018; Charkovska et al. 2019), is a detailed spatially explicit EI that is locally developed using the best available data, while ODIAC is a global disaggregation EI. But the true significance of this comparison is from the fact that GESAPU's HD emission fields are achieved by its multi-resolution approach in which the little use is made of emission disaggregation. This type of comparison could be potentially achieved for a few US cities using Gurney et al. (2012). But GESAPU provides a unique opportunity to evaluate ODIAC emissions at a high resolution across the entire country.

The authors acknowledge that there are potential emission modeling errors and uncertainties associated with GESAPU. From the bottom-up vs. top-down perspective discussed by Jonas et al. (2011), the emissions estimates are not constrained by atmospheric observations. This study assumes that those errors and uncertainties are minor when compared with the ODIAC-GESAPU differences, defined as ODIAC minus GESAPU, and that the differences can be attributed to ODIAC. This is because the ODIAC-GESAPU difference is expected to be largely driven by the emission representation errors in ODIAC due to the use of global power plant data and nightlight data for emission disaggregation, especially at a high-spatial resolution where large-scale downscaling approaches often fail (e.g., Gately and Hutyra 2017). This could be also supported by a comparison of 1-km resolution emission fields presented in Fig. 1. While major spatial patterns of emitting areas (mainly major cities and their suburb areas) are shared by two emission fields, GESAPU offers more spatial details in the emissions field due to the data granularity. This study thus uses ODIAC-GESAPU differences as a proxy measure for errors and uncertainties associated with ODIAC emissions.

### 2.2.2 Emission comparison setup

Another common limitation we often face in emission comparison is the differences in emission calculations such as calculation methods and emission definition. Ideally, the differences in gridded EIs should be explained by individual components of emission calculation (e.g., emission calculation and emission disaggregation), but it is often not done so (Oda et al. 2015). For example, Oda et al. (2015) attempted to mitigate this issue by scaling the gridded emissions to the same total and combined them with the global emission uncertainty. In fact, the use of GESAPU makes this even harder as its spatially explicit emissions are not based on emission disaggregation. Thus, we do not separate two error sources as also done in previous studies (e.g., Hutchins et al. 2016; Gately and Hutyra 2017).

We here focus to do the best effort to mitigate the differences due to different emission sectors covered in ODIAC and GESAPU. As described earlier, GESAPU indicates emissions by the IPCC sector (calculated at source level), while ODIAC has its own unique emission categorization (point source and non-point source over land) built upon the ODIAC fuel-based emissions categories. Depending on the comparisons we implement in this study, we do the

best effort to mitigate the emission definition differences in order to implement the emission comparisons in a meaningful way. For example, emissions from refineries and cokes are indicated as point source emissions in GESAPU, but those are not explicitly indicated in ODIAC and are assumed to be a part of the non-point source emissions. We thus do an ad hoc adjustment for each emission comparison to best support the results.

Table 2 summarizes the domain-wide emission totals from the two EIs and their breakdown, when emissions are compared as they are. We see this as a comparison at zero disaggregation level. We found that the domain-wide totals from ODIAC and GESAPU are fairly close (87,502 ktC/year for ODIAC and 85,612 ktC/year for GESAPU). The difference between the two totals was only 2.2%, which is well within the 2 sigma uncertainty range of the typical country-level emissions for developed countries (e.g., 5% as estimated by Andres et al., 2012). When compared with the original CDIAC estimate for Poland (86,246 ktC/year as estimated by Boden et al. (2016)), note that CDIAC national emissions are scaled in the ODIAC emission data development, in order to account for the difference between the global total emission and the sum of national total emissions mainly due to the inconsistency in the import/export portion of the statistical data (see more in Oda et al. 2018). When solely compared emission estimates taken from CDIAC and GESAPU, the difference is only 0.7% (CDIAC = 84,130 ktC/year). When the cement and gas flare emissions (2.5% of the total) are subtracted from ODIAC (85,355 ktC/year), the difference is even smaller (−0.3%). Andres et al. (2012) showed that the agreements among different national-level estimates are often reasonable and this initial comparison is consistent with the study. The differences in point source and non-point source emissions categories are also small (−0.1% for point source emissions and 4.5% non-point source emissions) (the definition of point and non-point emissions in this study will be discussed in detail later). The small differences support that the differences between two emission spatial fields are largely explained by the differences in emission modeling (thus, errors and uncertainties in ODIAC most likely). The results from this comparison can be combined with the national total uncertainty (CDIAC total uncertainty by Andres et al. (2012) in the case of ODIAC) to get the total uncertainty, in the method proposed Oda et al. (2015).

### 3 Results

In this section, we compare ODIAC with GESAPU by emission types (point and non-point emissions in the “[Point source emissions comparison](#)” and “[Non-point source comparison](#)” section), from the national scale to a policy-relevant city scale (“[City-level comparison](#)” section). It is challenging to put all of the evaluations done in this study together and come up with a single, universal evaluation metric. We thus attempted to summarize our results by

**Table 2** A summary of total, point, and non-point emissions for the year 2010. GESAPU sectoral emissions are aggregated to point and non-point emissions following the emission category defined in ODIAC (see the “[Point source emissions comparison](#)” section). The values are given in the unit of kiloton carbon per year (ktC/year)

	ODIAC	GESAPU	ODIAC minus GESAPU
Total	87,502 units	85,612 units	1890 (2.2%)
Point	42,687 (48.8%)	42,721 (49.9%)	−34 (−0.1%)
Non-point	44,815 (51.2%)	42,891 (50.1%)	1924 (4.5%)



focusing on the levels of the overall errors and uncertainties in ODIAC as a function of spatial resolution. We compared the emissions spatial patterns from the two EIs at different spatial resolution from the native 1-km resolution to aggregated spatial scales that are roughly consistent with the spatial resolutions commonly used in transport model studies (“[The disaggregation errors across different spatial resolutions—putting all together](#)” section).

### 3.1 Point source emissions comparison

#### 3.1.1 Background, issues, and focus in this comparison

The combined use of the point source information and nightlight data was a key the global high-resolution emission field in ODIAC (see Rayner et al. 2010; Oda and Maksyutov 2011). A major known issue has been the inaccuracies in facility-level emission estimates and geolocations in the power plant database, which are directly aliasing to the resulting emission field. The errors, especially the geolocation errors, could be mitigated by spatially aggregating the emission field. However, a high-spatial resolution EI, such as ODIAC, requires a very high accuracy in the geolocation. The power plant information for the USA is often considered to be one of the best, but Woodard et al. (2014) showed a mean 0.84-km geolocation error from randomly selected 500 plants and thus demonstrated that geolocation error in power plant databases is an issue even for the USA. Such geolocation errors can be significantly reduced by a simple data review, but such reviews would be labor-intensive. For example, Oda and Maksyutov (2011) reviewed data on approximately 400 power plants, but it was just a little more than 2% of the 17,000 CARMA plants. More fundamentally, the information in power plant databases available are often incomplete (missing power plants), sparse in time (limited base year), and often outdated. We here evaluate the point source part of ODIAC emissions by taking advantage of the facility-level power plant emission estimates with verified geolocations that GESAPU offers.

#### 3.1.2 Point source definition differences

First, we review the definitions of the two-point source data sources (CARMA/ODIAC and GESAPU). The point source definition in ODIAC was inherited from CARMA (i.e., electric power plants, as defined in Wheeler and Ummel (2008) and Ummel (2012)). CARMA was originally developed as a monitoring tool for GHG emissions from power plants (Wheeler and Ummel 2008). CARMA is primarily based on the individual plant information from the World Electric Power Plants (WEPP) database (<https://www.platts.com/products/world-electric-power-plants-database> now at <https://www.spglobal.com/platts/en/products-services/electric-power/world-electric-power-plants-database>), which is a commercial subscription global database provided by the company S&P Global Platts (<https://www.platts.com/>). According to the website, “It (WEPP) contains design data for plants of all sizes and technologies operated by regulated utilities, private power companies, and industrial autoproducers” and a product description (<https://www.platts.com/im.platts.content/downloads/udi/wepp/descmeth.pdf>); WEPP covers a wide variety of electricity generators worldwide (> 1 kW), not limited to major electric power plants regulated by the authorities. WEPP includes facility-level information and the geographical locations, but not CO<sub>2</sub> emission estimates. CO<sub>2</sub> emission estimates in CARMA were obtained in two ways: (1) taken from publicly available national power plant data if a facility entry can be matched up and (2) estimated using their own



emission estimation scheme defined by Wheeler and Ummel (2008). Wheeler and Ummel (2008) reported that 2922 entries in an earlier version of CARMA (which has been used for the ODIAC emission data development) were matched up with publicly available CO<sub>2</sub> emissions data globally and 260 for Europe with the European Pollutant Emissions Register (EPER) database. In the newer version of CARMA (CARMA v3.0), 6200 entries were matched up with the publicly available data globally and 63% of the total emissions in Europe were covered (Ummel 2012). However, the match up is extremely labor-intensive and Wheeler and Ummel (2008) acknowledged that the data match up was incomplete and might be inaccurate. Geographical coordinates (latitude and longitude) were derived from the postal address indicated in the WEPP using a fuzzy string matching approach (e.g., Wheeler and Ummel 2008; Ummel 2012). In CARMA v3.0, the geographical coordinates are also taken from the matched up publicly available data.

Oda and Maksyutov (2011) used the CARMA power plant entries with CO<sub>2</sub> emission estimates, assuming them as fossil fuel-fired power plants. In ODIAC, we loosely estimate the point source portion of national emissions using 2007 CARMA emissions. For other years, Oda and Maksyutov (2011) scaled the total point source emissions using national total emissions. The point source emissions thus might not be identical to ones originally indicated in CARMA. The potential errors of the power plant modeling approach have been evaluated in Oda and Maksyutov (2011). Emissions from cement production plants and gas flares should also be defined as point sources, but currently, emissions from cement production are distributed as a part of non-point source emissions and gas flare emissions are distributed using the spatial distribution of a gas flare nightlight product (see Oda et al. 2018).

In contrast, point source emissions in GESAPU are calculated at the facility-level and their geolocations are reviewed and verified (Bun et al. 2018). The GESAPU point source category includes non-power plant point sources such as facilities for petroleum refining and manufacturing solid fuels (coke plants) (in fact, these emissions are mapped using industrial area polygons, see Charkovska et al. 2019). Because of the emission estimation method, emissions from refineries and coke plants are not explicitly represented in ODIAC (hence in ODIAC). Thus, we considered the corresponding emissions in ODIAC are distributed as a part of the non-point source emissions and in the GESAPU emissions (six refineries, and solid fuels production by eight coke plants) are excluded from the GESAPU point sources and added to the non-point source emissions. In GESAPU, power plants with a capacity less than 20 MW are not included in the point source sector (specifically, electricity and heat generation), but are included in the sector “Manufacturing Industry and Construction” as a part of non-point source emissions (see Charkovska et al. 2019). This classification in GESAPU was originated from the power plant categories defined in the Polish data collection framework (big as a rule; separate statistical reporting) and industrial (small as a rule; electricity generation by industrial plants for their needs; statistical reporting within industrial plants reporting).

Table 3 summarized the differences in CARMA/ODIAC and GESAPU point source information after the adjustments mentioned earlier. Figure 2 shows the spatial distributions and intensities of the point source emissions from the two datasets. Regardless of the adjustments to mitigate the point source definitions differences, the differences between the two data sources are still significantly large and seem to be difficult to characterize the difference in a meaningful way. Although the totals from the two data sources are very close (0.1% difference), the numbers of point sources are significantly different. Looking at the spatial distributions, some of the major power plants seem to be well co-located (e.g., ones in Lublin (LU) and Mazovian (MZ) provinces; a list of two-letter codes is

**Table 3** A summary of point emissions for the year 2010 from CARMA (hence ODIAC) and GESAPU

	CARMA/ODIAC	GESAPU	ODIAC minus GESAPU
Total emissions	42,687 ktC/year (48.8% of the total)	42,721 ktC/year (49.9% of the total)	- 34 ktC/year (- 0.1%)
No. of plants	248 <sup>a</sup> (186 points)	77 (72 points)	+ 171 (+ 237.5%)
Definition	> 1 kW <sup>b</sup>	> 20 MW	-
Data source	WEPP <sup>c</sup>	Bun et al. (2018)	-

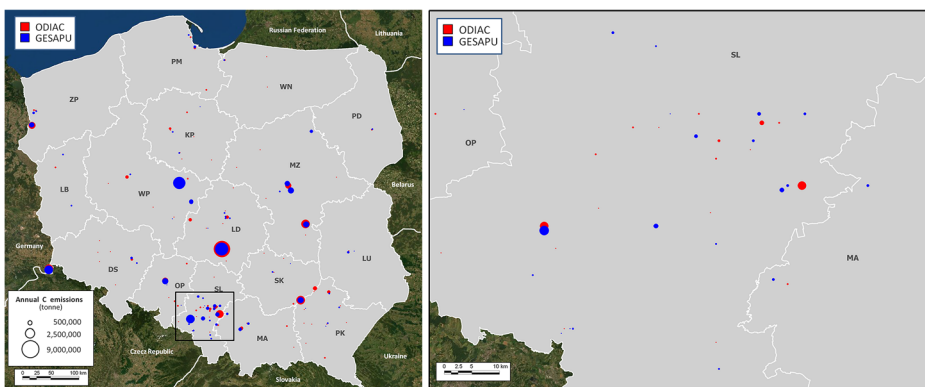
<sup>a</sup> Plants used in ODIAC only. The original CARMA has 491 plants for Poland

<sup>b</sup> <https://www.platts.com/im.platts.content/downloads/udi/wepp/descmeth.pdf>

<sup>c</sup> <https://www.spglobal.com/platts/en/products-services/electric-power/world-electric-power-plants-database>

shown in Appendix Table 6). However, many small CARMA plants seems to be distributed without being co-located with GESAPU plants and do not show any clear systematic patterns. This is more clearly shown in the enlarged view of the southern part of the Silesian province (SL in Fig. 2). The geolocation errors seem to be significantly larger than the estimates by Woodard et al. (2014) for the USA (0.8 km).

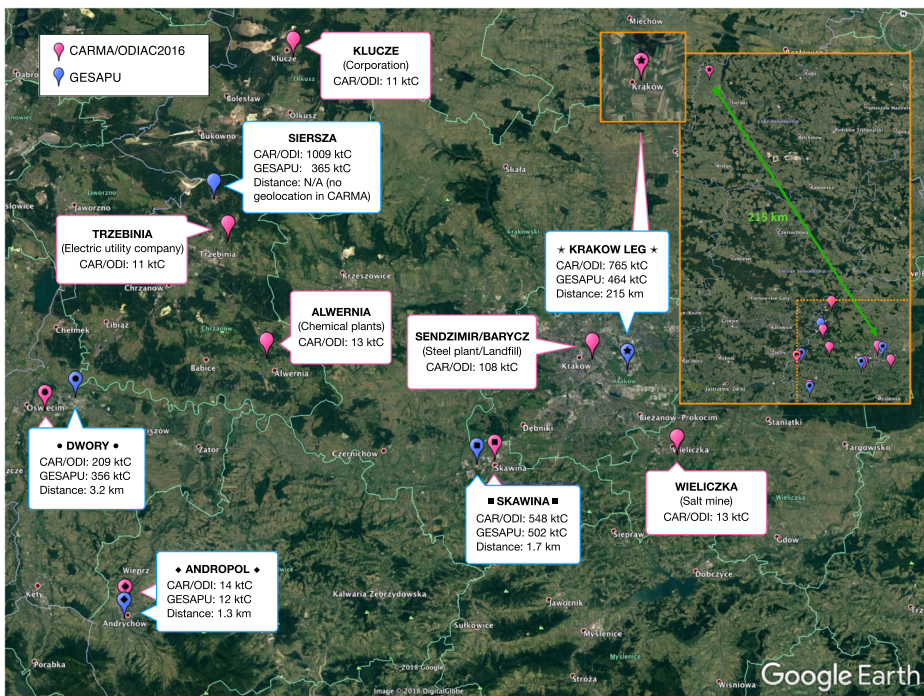
Our original intention in this comparison was to estimate an average geolocation error, like done by Woodard et al. (2014), but it turned out it is not straightforward and it is questionable if we could derive a meaningful conclusion given the significantly large difference between two data sources. One could theoretically do is to review point sources information, match them up and do a geolocation error assessment like done by Woodard et al. (2014), although it will be extremely labor-intensive. Before doing so, we decided to focus on a subset of point sources with a hope of getting a general sense of what the difference looks like. We will try to answer the geolocation question in a different way in the “[The disaggregation errors across different spatial resolutions—putting all together](#)” section.



**Fig. 2** Point source distributions over the entire Poland domain (left) and the south part of Silesian Voivodeship (province) (right). Blue dots indicate the ODIAC point source emissions and red dots indicate the GESAPU point source emissions. The size of the dots represents the emission intensities. The diameter of the dots in the figure is proportional to a log of power emissions. Note that point source definitions in ODIAC and GESAPU are not exactly the same (see the “[Point source emissions comparison](#)” section). Also, the numbers of point sources are quite different (186 for ODIAC and 77 for GESAPU) largely due to the differences in the point source definitions. See Table 6 in Appendix A for a list of two-letter Polish voivodeship (province) codes and full names

### 3.1.3 Point sources in Lesser Poland Voivodeship as an example

Figure 3 shows the locations of five GESAPU plants in Lesser Poland Voivodeship (MA, indicated by blue pins) and CARMA plants located in their vicinity (pink pins). The emissions intensity of GESAPU plants ranges from 11 to 502 ktC/year (1699 ktC/year in total, 4.0% of the national total of point source emissions). In comparison, we found eight CARMA plants in the vicinity of GESAPU plants that have the similar range of emission intensities (11 to 548 ktC/year), but with a smaller total (927 ktC/year, 2.1% of the national total point source emissions). Among five GESAPU plants, we are able to find three perfectly paired plants: Dwory (CARMA\_ID 11572; 356 ktC/year for GESAPU and 209 ktC/year for CARMA, indicated by pins with circle), Andoropol (CARMA\_ID 1522; 12 ktC/year for GESAPU and 14 ktC/year for GESAPU, indicated by pins with diamond), and Skawina (CARMA\_ID 41886; 502 ktC/year for GESAPU and 548 ktC/year for CARMA, indicated by pins with square). The three plants (870 ktC/year in total) account for 51% of the GESAPU MA regional total point source emissions. The three CARMA plants (771 ktC/year, 78% of the CARMA regional total) underestimated GESAPU by 99 ktC (11.3%). Those three paired plants are closely located (approximately, 1.3–3.2 km); however, the geolocation error exceeds the size of the single ODIAC grid cell (1 km) and thus those emissions are located a few grid cells away from the correct grid cell location.



**Fig. 3** A Google Earth image of the locations of GESAPU electric power plants in the Lesser Poland Voivodeship and CARMA/ODIAC power plant emissions nearby. Blue pins indicate GESAPU electric power plants and pink pins indicate CARMA/ODIAC point sources nearby. Paired plants are indicated by the mark (circle, diamond, square, and star) on the pins. The distances between paired plants are roughly measured on Google Earth application

Some other CARMA plants are closely located with GESAPU plants, but those are not indicating electric power plants in GESAPU. For example, the CARMA plants in the middle of Kraków (indicated as Sendzimir/Braysz) looks like representing the power plant near the city center the Krakow Leg, which is the largest GESAPU plant in MA. But in fact, the Sendzimir/Barycz (CARMA\_ID 40540/3454; total 108 ktC/year) is a combination of multiple sources such as a steel plant and a landfill which are both located somewhere else. The steel plant is just located a few kilometers east of the city center. We think that the reason might be that the central office of all these plants is located in the central part of Kraków and its postal address was used for setting geographical coordinates of these plants. This is obviously an error from the point source information point of view. Placing emissions to city centers however might have mitigated errors in the atmospheric CO<sub>2</sub> simulations to some degree by not creating an imaginary point-wise emission gradient, rather than assigning an intense point source emission to a completely non-emitting region. In fact, we found that Krakow Leg in CARMA (CARMA\_ID 23019; 464 ktC/year for GESAPU and 765 ktC/year for CARMA), was placed to a village named Kraków located in the administrative gmina (municipality) Warta, Łódź Voivodeship (LD), in central Poland, which is approximately 215 km away from the city of Kraków in MA. This seems to be explained by an error in the fuzzy string match done by Wheeler and Ummel (2008), probably due to the accurately (or inaccurately) including Slavic characters. While Krakow Leg in CARMA has provided an error in LD, the Sendzimir/Barycz have helped a bit to make up the missing large emissions, although only by a quarter of it. Another large power plant Siersza (CARMA\_ID 41552; 365 ktC/year for GESAPU and 1009 ktC/year for in CARMA) was not found in the ODIAC emissions, although indicated in the original CARMA. This was because its geographical coordinates were not available and the emission was distributed as a part of non-point source emissions. Even with a correct geolocation, ODIAC would have overestimated the Siersza emission by more than 200%. The electricity utility company nearby Trzebinia (CARMA\_ID 46415; 11 ktC/year) might have helped to reduce the emission representation error, but only by 3% of the true emission. For the rest of the CARMA plants, we confirmed Alwernia (CARMA\_ID 1249; 13 ktC/year) represents a chemical plant, Wieliczka (CARMA\_ID 49640; 13 ktC/year) is a salt mine place for tourists, based on the information on the web. Klucze (CARMA\_ID 22496; 11 ktC/year) is most likely to indicate a hygiene manufacture company, but the location indicated in CARMA did not match with the company's actual facility location.

## 3.2 Non-point source comparison

### 3.2.1 Background, issues, and focus in this comparison

The data on nightlights observed from satellites have been identified as an excellent indicator of the intensity of human activities (e.g., Elvidge et al. 1999). The use of nightlight data allows us to incorporate the dynamic changes in satellite-observed human emissions in a timely and globally coherent way (e.g., Oda and Maksyutov 2011; Oda et al. 2018). Separating point source emissions (which are not always co-located with human settlements) from total emissions further improved the performance of the nightlight data as an emission proxy, even at a higher spatial resolution (Rayner et al. 2010; Oda and Maksyutov 2011). The performance of the nightlight data as a proxy for CO<sub>2</sub> emissions however has not been fully evaluated,



especially at a subnational level. This is because of the difficulties in evaluating disaggregated emissions as discussed earlier (see the “Emissions dataset comparison” section) and elsewhere (Andres et al. 2016; Oda et al. 2018). ODIAC emission distributions are compared with other disaggregated or semi-disaggregated emissions (e.g., Hutchins et al. 2016; Hogue et al. 2016; Gately and Hutrya 2017), but those evaluations do not allow us to evaluate the performance of nightlight data as the comparisons did not take the differences in the disaggregation approaches into account.

In this comparison, we evaluate the performance of the satellite-observed nightlights as a proxy for diffuse source emissions with a special focus on characterizing the biases in the resulting emission field. The non-point emissions defined here are the residual of the total minus point source emissions. As already, the non-point total was close enough (only 4.5% difference, see Table 2) that we did not subtract the emissions from cement production and gas flaring from the ODIAC field. The subnational differences in non-point source emissions between ODIAC and GESAPU are expected to be larger than the difference in the total of non-point emissions. Non-point source emissions spatial distributions in ODIAC are purely estimated from the nightlight data. Thus, this comparison reveals how well nightlight data can explain the emission spatial distributions over the domain of Poland. Our special interest is to see the performance of the nightlight data along with the urban-rural transition, as it is only possible to do the detailed distribution of emissions with a multi-resolution EI such as GESAPU that covers not only cities but the entire country domain.

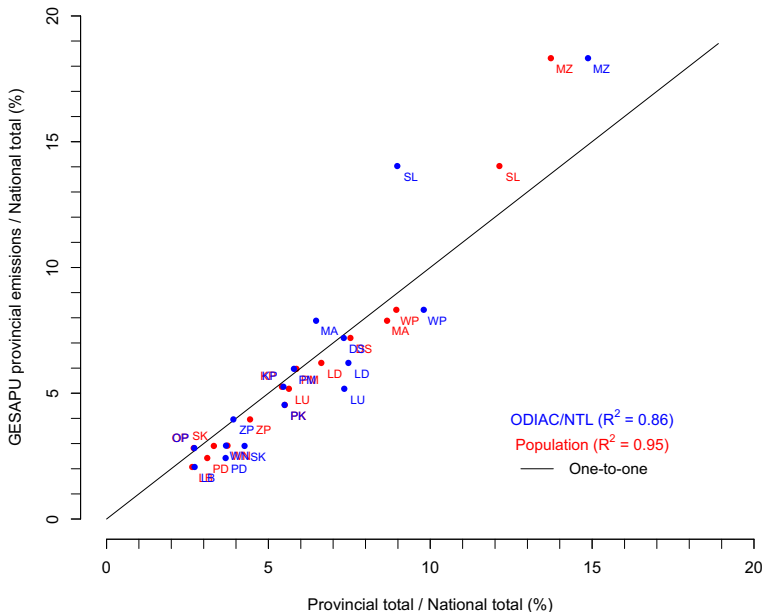
### 3.2.2 The province-level accuracy of ODIAC disaggregation

In principle, the proxy-based disaggregation approach should work reasonably well at a large scale. Andres et al. (1996), for example, disaggregated national emissions using population distribution to a  $1 \times 1$  degree resolution global domain (i.e., CDIAC gridded EI). The gridded EI has been used for forward and inverse model calculations of CO<sub>2</sub> at large scales (e.g., Gurney et al. 2002). The population is a good estimator of the intensity and spatial extent of human activities (hence, CO<sub>2</sub> emissions) at an aggregated large spatial scale (e.g., state/province levels). The correlation between population and CO<sub>2</sub> emissions however is expected to become weak at a higher spatial scale where spatial and temporal patterns of individual emissions sources (e.g., power plants and traffic) are more apparent (e.g., Oda et al. 2018). This should remain true, regardless of the choice of proxy data such as a nightlight, gross domestic production (GDP), and any other spatially distributed variables that have a fair correlation with human activities. As the name suggests, those variables are used as a proxy and could poorly represent regional differences in the degree of correlations with human activities, which could be a source of disaggregation bias. In fact, as shown by Raupach et al. (2007), regional emission drivers are very different over different parts of the world and this is expected to be applicable to subnational emissions. For example, nightlight data show different levels of correlation with population over different countries with different economic development status (e.g., Raupach et al. 2010; Oda et al. 2010). Those are the sources of uncertainty we have not been able to study in detail and thus the focus in this comparison.

Here we compared the non-point emissions totals of ODIAC and GESAPU calculated at province (called voivodeship in Poland) level. This is an important check to confirm if nightlight data are a fair proxy and/or estimator of province-level CO<sub>2</sub> emissions, before disaggregating emissions to much higher spatial scales (where disaggregation error can be significant). Total emissions at provincial levels are available for some other parts of the world

(e.g., USA, Japan, and China). Thus, a comparison of provincial-level emission estimates could be an option to further evaluate the performance of the proxy approach used. A fair performance of the proxy (nightlight data) at the provincial level should support that subnational emissions changes driven by provincial-level mitigation activities could be detected with the proxy-based disaggregated emissions.

Figure 4 compares the percentage provincial share of the Polish national emissions (hence nightlight data shown in blue in Fig. 4) with the comparable values from GESAPU. All of the values calculated are shown in Table S3. We also plotted the population (shown in red in Fig. 4) as a reference to characterize the performance of the nightlight data over different provinces. What Fig. 4 essentially shows is the accuracy of the proxy-based provincial emission estimates. Figure 4 shows the fair performance of nightlights to estimate province emissions ( $R^2 = 0.86$ ). However, the percentage differences at the province level (estimation errors) are ranging from  $-33$  to  $58.4\%$ . The estimation errors of provinces with a large emission share such as Masovian province (MZ,  $18.3\%$  in GESAPU) and Silesian province (SL,  $14.0\%$  in GESAPU), which are the top two provinces with the highest per capita non-point emissions (see Table S3), are relatively larger in absolute value than for others with smaller emission share. ODIAC underestimated the MZ emission by  $15\%$  ( $1196$  ktC,  $2.8\%$  of the total GESAPU) and the SL emission by  $32\%$  ( $1995$  ktC,  $-4.7\%$  of the total GESAPU). Also, the percentage differences for provinces such as Podlaskie (PD,  $58\%$ ) and Holy Cross (SK,  $53\%$ ) are more prominent, although their emission shares are small ( $2.4\%$  and  $2.9\%$ , respectively) (hence, small estimation errors in absolute value). Those differences are minor given the  $4.4\%$  total difference ( $1901$  ktC), especially in large-scale transport modeling applications. The good spatial subnational emission partitioning (supported with the excellent correlation with GESAPU subnational emissions) (at approximately  $139$ -km resolution based on



**Fig. 4** A comparison of the % share of the provincial ODIAC emissions (hence, nightlight (NTL)), population, and GESAPU emissions

the average area size of provinces) and relatively low emission errors compared with the total emissions ( $-4.7$ – $2.5\%$ , in the presence of the  $4.4\%$  total difference) support the good quality of the disaggregated emissions at this disaggregation level. However, an improvement will be needed in the use of the estimated subnational emissions to keep track of subnational emissions changes, as the estimation errors at the province level are almost the same magnitude as the emission reduction proposed in local climate actions or larger.

We also found that population data outperformed nightlight data in estimating provincial emissions ( $R^2 = 0.95$ ). Although we acknowledge that this comparison is only done for a single year (year 2010) and a single country, thus, the conclusions here might not remain the same for other years and other countries, the correlation might imply that demographic data such as population data might be able to provide regional constraint on subnational emissions for Poland and potentially improve the accuracy of nightlight-based emission disaggregation. One thing we can do is to calibrate the provincial nightlight to population (if an EI like GESAPU is not available). In fact, provincial-level information has been proven to be useful to improve the subnational disaggregated emissions. Nassar et al. (2013) applied a per capita correction to ODIAC and CDIAC population-based gridded emissions over Canada. The study found the correction to ODIAC was smaller than that to CDIAC gridded emissions.

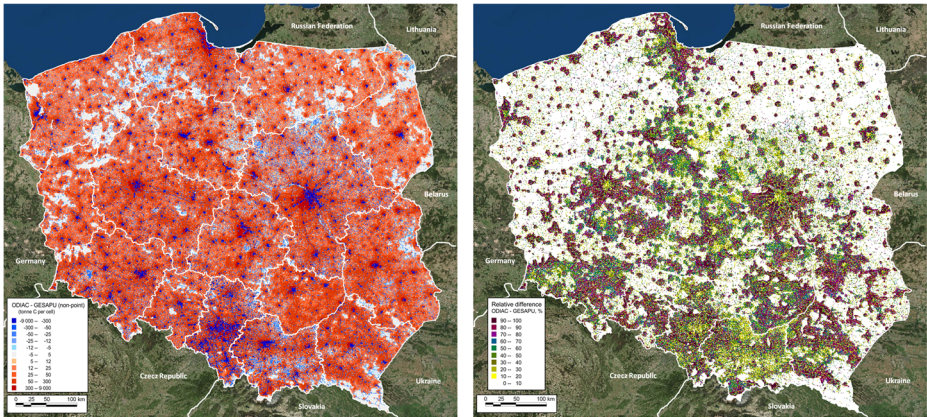
The estimation error (estimation accuracy) of the two proxies seems to be comparable. The size of the corrections we could make by using population data in addition to nightlight data might be subtle, but reducing the emission estimation errors and improving the ability to accurately partitioning provincial emissions should help making a robust logical link between subnational emissions and total emissions. Provincial-level demographic data and/or statistical data could potentially provide a measure for the emission accuracy in disaggregated emissions and/or provide a constraint on emission disaggregation.

### 3.2.3 ODIAC-GESAPU subnational differences at a grid-scale level

Although population showed better performance in estimating province emissions, the advantages of nightlight data over population data remain valid. The high-resolution images of nightlights, which are collected far more frequently than demographic data in a globally coherent manner, allow us to disaggregate emissions to a 1-km resolution. Here we compared ODIAC and GESAPU emissions on a common 1-km grid and evaluated the high-resolution emission disaggregation. Figure 5 shows the absolute and relative differences between ODIAC and GESAPU. The actual non-point maps are only presented in Appendix A (see Fig. 9) as the differences from the total maps (Fig. 1 in the main text) are not obvious in the same color scale. To mitigate the differences due to pre-disaggregation emission estimates and focus on the emissions spatial patterns differences, although the difference is only  $4.5\%$ , we scaled the ODIAC total emissions to GESAPU. The differences seen in the plots are thus largely explained by the differences in disaggregation approaches, mainly the lack of the underlying data granularity in ODIAC.

The comparison reveals several interesting spatial features in ODIAC-GESAPU differences. In general, ODIAC underestimates the emissions at the urban centers (see urban cores in blue in the absolute difference plot) and overestimates emissions outside of them. The underestimations at cities are outstanding in the absolute difference plot, but those are often of an order of  $10$ – $30\%$  in relative difference. This is very good in agreement, especially compared with the recent study in the northeastern USA area (Gately and Huryra (2017) that was showing  $50$ – $250\%$  relative differences over urban areas). The underestimations in the





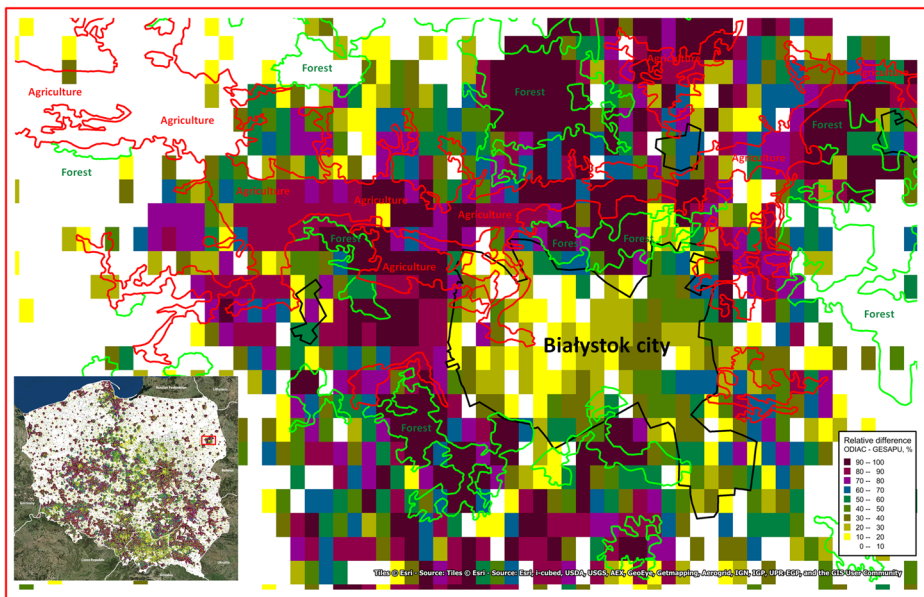
**Fig. 5** ODIAC-GESAPU absolute (left) and relative (right) differences. The differences are defined as ODIAC minus GESAPU

suburban areas, especially immediately outside of the cities, are relatively larger (90–100% in relative difference). The relative differences are decreasing as we go to remote areas (~10% relative difference). This general difference feature (underestimation in cities and overestimation outside of them) could be explained by the lack of a traffic sector in ODIAC as transportation is often a major sector in urban areas. The lack of a transportation sector thus incorrectly shifts those emissions to suburban areas (Oda et al. 2017, 2018). The insolation of transportation emissions will be the next key to addressing the urban-rural emission biases. The underestimation over remote areas is largely explained by ODIAC having zero emission areas due to the nightlight data proxy. From the spatial patterns of the underestimated emissions over the remote areas, we speculate that the underestimation is mostly related to transport sector (roads), centralized heat production (cities), and manufacturing industry (industrial zones in/near cities). Approximately 25,000 pixels (4.2% of the total pixels) indicate the 100% relative difference (dark brown) and 66% of them in GESAPU indicate 2–10 tC/year. emissions with ODIAC indicating zero emissions (hence, 100% relative difference).

### 3.2.4 Nightlight proxy bias at urban-rural transition areas

While we take a closer look at the difference plot, we become curious about the large relative differences (overestimations in ODIAC) over the urban-suburban transitioning areas. To our eyes, the high relative difference seems to be located in the west-north of cities (see Fig. 11). Here we hypothesized that the large difference might be due to the error in the geolocation of the nightlight data. We roughly estimated that we could significantly mitigate the difference by shifting the nightlight data by approximately 1.6 km to the south-east direction with 27.3 degrees (see Appendix B). This slightly less than 2-km geolocation error, which is larger than the ODIAC native grid (30 arcsec~1 km), could be a non-negligible source of errors especially when ODIAC emissions are used for urban studies. We further speculate some light aureole around cities strengthened by the vegetation in the areas might force ODIAC to incorrectly distribute emissions.

Figure 6 shows the relative emission difference around the city of Białystok (300,000 habitats). We superposed several data layers, such as the city administrative boundaries (black), forest maps (green), and agricultural land maps (red, from Corine land cover map),



**Fig. 6** The relative difference around the city of Białystok. Several layers such as the boundaries of cities (black), the boundaries of forests (green), and the boundaries of agricultural lands (red, from Corine land cover map) are superposed. The forest and agricultural maps only indicate major ones just not to make the plot too busy

onto the relative difference map. The forest and agricultural maps only indicate major patches in order not to make the plot busy. The city lights give a certain halo at a short distance from the urbanized area. The DMSP sensor (or retrieval algorithm) incorrectly identified them as electrical lights although those are from forested or agricultural areas. With the weak non-electrical lights, ODIAC thus allocates weak emissions over the areas (order of 100 tC/year), while GESAPU indicates zero emissions (hence, yielding 90–100% relative differences). As goes far from the urban area, this bias becomes weaker as the sky reflection gets weaker and eventually lower than the instrument detection limit. This could be confirmed or rejected by a further investigation with new nightlight data collected from the Visible Infrared Imaging Radiometer Suites (VIIRS) on board Suomi National Polar-orbiting Partnership (Suomi-NPP) (e.g., Román and Stokes 2015; Román et al. 2018). The Suomi-NPP/VIIRS has an improved light sensitivity over previous nightlight instrument (e.g., Elvidge et al. 2013) and has been collecting improved nightlight images since 2012 (e.g., Román et al. 2018).

### 3.3 City-level comparison

#### 3.3.1 Disaggregating national emissions to the city level

With the recent growing research interest in GHG emissions from cities, ODIAC emissions have been used for urban simulation studies where highly spatially resolved urban emissions are required (e.g., Oda et al. 2013 for Tokyo; Lauvaux et al. 2016 for Indianapolis; Ye et al. 2017 for Riyadh, Cairo and the Pearl River Delta (PRD); Martin et al. 2018 for the DC-Baltimore area; Hedelius et al. 2018 for LA). As mentioned earlier, ODIAC was originally designed for atmospheric CO<sub>2</sub> inverse flux calculations to reduce the potential model

biases due to coarse resolution gridded EIs. Given the simple nightlight-based downscaling in ODIAC, also as shown earlier in this section, urban emissions derived from ODIAC are subject to errors associated with the emission disaggregation. However, a few US domain-based studies have shown the utility of ODIAC downscaled urban emissions (e.g., Brioude et al. 2013; Lauvaux et al. 2016; Hedelius et al. 2018). Those studies have partially supported that ODIAC downscaled urban emissions are reasonably allocating emissions to urban areas. For example, Lauvaux et al. (2016) reported that the difference from locally developed GIS-based emissions by Gurney et al. (2012) was just 20% regardless of the significant differences in emission modeling approaches. The recent study by Gurney et al. (2019) further compared ODIAC and Hestia products for four US cities (Los Angeles, Salt Lake City, Indianapolis, and Baltimore) and found that the city-wide emission differences range from  $-1.5$  (Los Angeles) to 20.8% (Salt Lake City). Gately and Hutyra (2017) also found that ODIAC, among several downscaled emissions such as EDGAR and FFDAS, showed the best agreement with their 1-km ACES bottom-up emission data product. An encouraging message from this study is that the urban relative differences (shown in the previous subsection) are much smaller than the previous study such as Gately and Hutyra (2017). This might imply that the nightlight regional dependency is working reasonably well for urban areas in Poland. With the lack of highly detailed EI such as GESAPU and Hestia, getting reasonably accurate urban emissions via global disaggregation has a significance for global GHG emissions monitoring.

To make such downscaled emissions more useful for urban studies, we need to assure the accuracy of the spatially distributed emission estimates for urban high-resolution transport modeling. Previous studies have shown fair model reproducibility using ODIAC emissions. The ability of evaluating ODIAC emissions might be limited by the model ability (Martin et al., 2018). Due to the issues with the nightlight data (e.g., blooming effect), it is challenging to accurately map electrical light patterns without biases (hence, errors in resulting emission fields). Such errors might be too subtle to detect. Also, for policy applications, showing reasonable emission distributions is not good enough. We need to assure the emissions changes in the field are reflecting changes in the local emission driver (emission reduction), which might be difficult to achieve by current national emission downscaling. However, it might be possible with EI collected by local climate actions, such as the C40 cities climate leadership group (<https://www.c40.org/>) and the global covenant of mayors for climate and energy (<https://www.globalcovenantofmayors.org/>). A regular EI reporting is often a requirement under these climate mitigation activities. For example, the global covenant of mayors has four processes such as commitment, inventory, target, and plan. EI reporting is the first process after cities declare their commitment. The covenant of mayors defined at least scope 1 emission following an inventory guide defined by the Global Protocol for Community-Scale Greenhouse Gas Emission Inventories (<https://ghgprotocol.org/greenhouse-gas-protocol-accounting-reporting-standard-cities>). In the use of locally compiled city EIs, creating reasonably well spatial distribution has more significance (e.g., Oda et al. 2017).

### 3.3.2 Disaggregated urban emissions for Warsaw

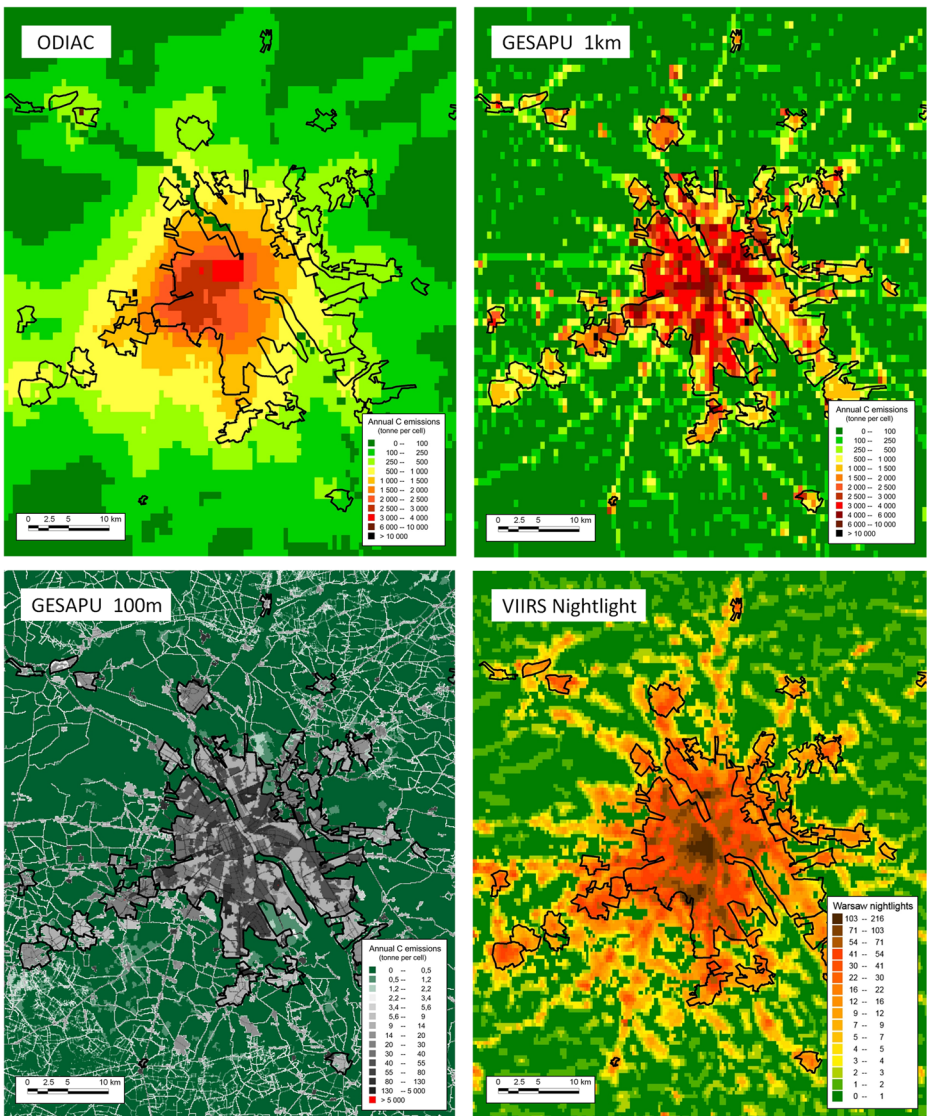
Here we took a look at the emission fields over the city of Warsaw, the capital city of Poland (population 1.7M in the year 2010). Warsaw is one of the world megacities that have been active in global climate mitigation activities, such as the C40 cities climate leadership group (since 2005, as one of the founding member cities) and the global covenant of mayors (since

2009–Present), and the district energy in cities initiative (<http://www.iclei.org/activities/agendas/low-carbon-city/districtenergy.html>). Warsaw has been moving towards low-carbon ([https://www.c40.org/case\\_studies/c40-good-practice-guides-warsaw-sustainable-energy-action-plan-for-warsaw-in-the-perspective-of-2020](https://www.c40.org/case_studies/c40-good-practice-guides-warsaw-sustainable-energy-action-plan-for-warsaw-in-the-perspective-of-2020)) and air quality ([https://www.c40.org/case\\_studies/cities100-warsaw-district-heating-upgrades-cut-air-pollution](https://www.c40.org/case_studies/cities100-warsaw-district-heating-upgrades-cut-air-pollution)). As a part of the climate action activities, Warsaw completed the first phase of the requirement (inventory development) (<https://www.globalcovenantofmayors.org/cities/warsaw/>). Including those locally compiled emission inventories should reduce the disaggregation bias significantly, compared with the current national emission disaggregation, although the uncertainty assessment of the city-level emission estimates will be another major challenge.

Figure 7 compares three Warsaw emission fields from ODIAC (1 km) and GESAPU in two different aggregated spatial resolutions (1 km and 100 m), and a 15-arcsec (approximately 500 m) nightlight image collected from the VIIRS on the Suomi-NPP spacecraft, developed by the National Oceanic and Atmospheric Administration (NOAA)'s National Center for Environmental Information. As we expect, also shown in the results earlier (Fig. 6), urban emission spatial distributions are poorly represented in ODIAC. The 2010 total emissions within the city boundary (this should roughly correspond to the scope 1 territorial emissions) are 3638 ktC in GESAPU and 2554 ktC in ODIAC (30% difference). The authors conclude the difference is reasonably small compared with the cases in the US cities, such as Lauvaux et al. (2016) and Gurney et al. (2019). The agreement could be better if we take a slightly bigger domain for the emission calculation to mitigate the poor nightlight-driven city patterns. Here we also see the ODIAC urban emission core is shifted roughly towards west, compared with the city boundary as well as the VIIRS nightlight data. Comparing the ODIAC and the VIIRS nightlight data, our hypothesis for the high relative difference value around cities could be plausible (ODIAC distribute emissions over non-electrical light areas in the VIIRS nightlight data. Note the two nightlights are not taken in the same year although), is not only one example plausible (see Fig. 10 for absolute and relative difference plots for Warsaw). Also, it is very clear that the inclusion of traffic emissions would benefit to achieve a better emission estimate as this scale, with the underestimation in ODIAC emissions outside the city, as also discussed by Oda et al. (2017) and Gurney et al. (2019). Also shown in the previous subsection, the relative differences within the city boundary range from 0 to 60% and are relatively smaller than the case of Gately and Hutrya (2017) in the northeastern part of the USA.

Comparing the Warsaw city boundary to the VIIRS nightlight spatial pattern, the use of the VIIRS nightlight data for emission downscaling would significantly improve the spatial representation of urban emissions that has been proven to be useful for urban inversion (Oda et al. 2017). With the improved light sensitivity over previous nightlight instrument (e.g., Elvidge et al. 2013) as well as an improved nightlight data retrieval (Román et al. 2018), disaggregation errors due to the current emission representation errors can be greatly reduced. However, it is very clear that nightlight patterns within Warsaw do not always represent sectoral CO<sub>2</sub> emissions reasonably well, and better within-city emission modeling is required for achieving improved emission gradient within the city. Oda et al. (2017) have shown the validity of the combined use of satellite and geospatial modeling for better approximation of emission spatial patterns in urban inversion applications. This approach should improve the urban-remote area emission allocation we have looked earlier this section. Or instead of starting from the national estimate, we could start with city-level emission estimates available from activities by local climate actions.





**Fig. 7** A comparison of different city emission spatial representations for Warsaw, Poland. ODIAC (top left), GESAPU at 1-km resolution (top right), GESAPU at 100-m resolution (bottom left), and VIIRS nightlight at 500-m resolution (bottom right). The 15-arcsec (approximately 500 m) nightlight image collected from the Visible Infrared Imaging Radiometer Suite (VIIRS) on the Suomi National Polar-orbiting Partnership (Suomi-NPP) spacecraft, is available from [https://www.ngdc.noaa.gov/eog/viirs/download\\_dnb\\_composites.html](https://www.ngdc.noaa.gov/eog/viirs/download_dnb_composites.html)

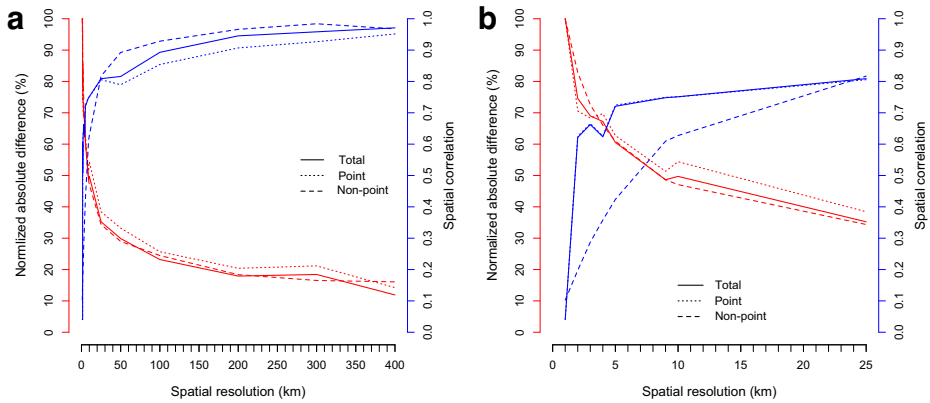
### 3.4 The disaggregation errors across different spatial resolutions—putting all together

This study is unique compared with previous EI evaluation studies, in the way how we evaluated ODIAC emissions by components (point and non-point), over different spatial scales (national, province, city, and in between). The series of emission comparisons in this study not just estimated

the disaggregation errors but also identified the possible causes of the biases and provided implications to reduce the disaggregation errors in ODIAC and possibly other nightlight-based disaggregation frameworks. The final challenge at the end of the series of the emission comparisons is to combine all the knowledge about the disaggregation errors we obtained from different comparison shown earlier, and come up with one single metric that guides the users of the ODIAC emission data product. The authors believe that such a metric would be a benefit for the data users who prescribe atmospheric transport models with ODIAC emissions and the potential users who wish to use ODIAC beyond the original intended use.

The errors in disaggregated emissions are expected to change as a function of the spatial scales (e.g., Hogue et al. 2017). In atmospheric modeling, the error is also a function of the sensitivity of the observation to the error. In most of global atmospheric CO<sub>2</sub> flux inversions (e.g., Bousquet et al. 1999; Gurney et al. 2002; Baker et al. 2006; Feng et al. 2009; Chevallier et al. 2010; Peylin et al. 2013; Houweling et al. 2015; Feng et al. 2016a), for example, FFCO<sub>2</sub> is given as a known quantity and never be optimized. Gurney et al. (2005) have pointed out that FFCO<sub>2</sub> needs to be accurately given in the inversions in order to obtain robust estimates of natural uptakes; otherwise, the errors in FFCO<sub>2</sub> are aliasing to the final flux inverse estimates. Historically, most of the atmospheric CO<sub>2</sub> data have been collected at remote background sites in order to infer at natural carbon uptakes (hence, FFCO<sub>2</sub> atmospheric signals are minor) (e.g., Tans et al. 1990; Ballantyne et al. 2012). Also, the spatial resolutions of working atmospheric transport models have been often coarser than 1 degree (e.g., Gurney et al. 2002), with few exceptions. The use of perfect FFCO<sub>2</sub> thus has been a fair assumption in the conventional atmospheric inversions and the accuracy of the emissions disaggregation has not been a major concern. However, atmospheric CO<sub>2</sub> data from dense city-focused observation networks (e.g., Lauvaux et al. 2016; Martin et al. 2018) and satellites (e.g., Kort et al. 2012; Janardanan et al. 2016; Schwandner et al. 2017; Hakkarainen et al. 2016; Nassar et al. 2017) are recording local emissions signatures from human activities up to few kilometer spatial scales and models are capable of replicating those concentration (e.g., Oda et al. 2012; Feng et al. 2016b; Lauvaux et al. 2016; Oda et al. 2017; Ye et al. 2017; Martin et al. 2018; Wu et al. 2018; Hedelius et al. 2018). As the spatial resolution of transport modeling increases to fully utilize those observations, the system should be more sensitive to the errors in FFCO<sub>2</sub> (e.g., Oda and Maksyutov 2011; Oda et al. 2015). However, many global and regional inversion studies do not even incorporate any kind of uncertainty information regarding FFCO<sub>2</sub> imposed. This is partly because the error characterization is challenging and the uncertainty estimates from the multi-inventory comparison might not be fair to work with inversions. At the urban scale, it is often challenging to define errors due to the lack of EIs (e.g., Lauvaux et al. 2016; Oda et al. 2017). This study also shares difficulties in evaluating uncertainties in spatially explicit EIs. The difficulties do not fully allow us to assess the accuracy of the disaggregation, but this study attempts to demonstrate the change in disaggregation errors as a function of spatial scales in order to demonstrate what extent the spatial aggregation would help reducing the errors in the downscaled emissions, as a case study.

Figure 8 shows the levels of ODIAC-GESAPU differences in the emission magnitude and the agreement in the spatial patterns (spatial correlation), as a function of the spatial resolution (1, 5, 10, 25, 50, 100, 200, and 400 km). Some of the spatial resolutions roughly match with some popular spatial resolutions in transport model simulations (e.g., 1 km, urban simulations; 10 km, regional simulations; and 200 km, global inversions; see Table 4). The differences are defined as the sum of the absolute differences, which we think conservative as a measure. The initial difference (at 1-km resolution) is approximately 155% (200% for point and 112% for non-point). To highlight the level



**Fig. 8** ODIAC-GESAPU difference (or agreement) as a function of the spatial resolution

of mitigation by going from the native 1-km resolution to lower spatial resolutions, we normalized the difference by the initial difference. Thus, the difference begins with 100%.

As we expect, the emission differences are reduced as aggregated at coarser spatial resolutions. The difference in total emission was significantly mitigated during the first 100 km (close to 1 degree) of aggregation, by slightly more than 70%. The decrease in the difference (mitigation) after passing 100 km was subtle, compared with what we see in the first 100 km of aggregation, but showed a monotonous decrease. At 400-km resolution (slightly less than 4 degrees), the difference was mitigated by approximately 85%. Point and non-point emissions differences showed similar changes as a function of spatial resolution, with the point source difference being a few percent higher (preceded by non-point emission difference). For example, non-point source emissions achieved 80% difference reduction at 200 km, while point source emissions achieved it at 350-km resolution and coarser. Also, it is important to note that the total emissions differences are largely driven by point source differences, rather than non-point emission difference. The overall behavior of the correlation over the spatial scales is similar, but some features are worth describing. The three correlation curves achieved 0.9 at different spatial scales (100 km for total emission, 200 km for point source emissions, and a little after 50 km for non-point emissions), with the point source curve preceding to the non-point source emission before 25 km. Currently, ODIAC emission data products are provided in two spatial resolutions (1 km and 1 degree). Based on this analysis, the disaggregation error seems to be well mitigated (76.8% at 100 km). If we move from the 1 degree to a 0.1 degree, which is a typical global gridded EI resolution (e.g., EDGAR), we need to accept a more disaggregation error (50.3% at 10 km).

Figure 8 b shows the change of difference and correlation at less than 25 km. We found that approximately 50% of the difference was mitigated during the first 10 km (approximately 0.1 degree). Also, it is now clearly seen that the correlation improvement was driven by point source aggregation than non-point emissions, which suggests the total agreement is dominated by point emissions. This implies that mitigating the errors in point source emissions should effectively improve the overall accuracy of the emission field of ODIAC especially at high-spatial resolutions. As shown in the previous section, the current ODIAC point source emissions have significant errors due to the use of CARMA. Point source emissions holding more disaggregation mitigation potential than non-point source emissions is a promising message for ODIAC, as the improvement of point sources are very labor-intensive, but achievable, and this study has identified the sources of errors and provided implications of how to improve them.



**Table 4** A summary of the ODIAC-GFASAPU emission differences and spatial pattern agreements at significant spatial resolutions for atmospheric modeling. Values are for total emissions (point + non-point) and values for point and non-point are in the brackets. The error reduction is defined by 100% minus normalized emission difference. The resolutions and narrative are just for reference and do not absolutely define high or low resolution

Spatial resolution	Error reduction by spatial aggregation (point/non-point)	Spatial correlation (point/non-point)	Narrative, application examples
1 km	–	0.04 (0.04/0.10)	1 km: ODIAC native resolution, high-resolution urban simulations (e.g., Lauvaux et al. 2016);
5 km	39.4% (37.3/39.1)	0.72 (0.72/0.42)	5 km: Fine-grained EI (e.g., Vogel et al. 2013; Thiruchittampalam 2012);
10 km	50.3% (45.6/52.9)	0.75 (0.75/0.63)	10 km: Typical global and regional gridded EI spatial resolution (0.1 degree; e.g., the Emission Database for Global Atmospheric Research (EDGAR) and the Regional Emission Inventory in Asia (REAS));
25 km	64.8% (61.6/65.6)	0.81 (0.81/0.82)	
50 km	70.1% (66.8/71.0)	0.82 (0.79/0.89)	
100 km	76.8% (74.3/75.5)	0.89 (0.85/0.93)	25 km: MRV <sup>a</sup> fossil fuel data assimilation system (e.g., Rayner et al. 2010; Pinty et al. 2017), regional simulations, and global high-resolution CO <sub>2</sub> simulations ( <a href="https://gmao.gsfc.nasa.gov/research/science_snapshots/new-view-CO2.php">https://gmao.gsfc.nasa.gov/research/science_snapshots/new-view-CO2.php</a> );
200 km	82.1% (79.6/81.6)	0.95 (0.91/0.97)	100 km: CDIAC gridded EI (1 degree, Andres et al. 1996), NOAA's CarbonTracker for the USA (Peters et al. 2007);
400 km	88.1% (85.8/83.9)	0.97 (0.95/0.97)	≥ 200 km: TransCom models (e.g., Gurney et al. 2002; Houweling et al. 2015)

<sup>a</sup> Monitoring, Reporting, and Verification

While we found that the differences can be significantly mitigated by spatial aggregation (coarsen the spatial resolution), this analysis also shows that the absolute difference does not go down lower than 12% of the initial errors (18% without normalization). This is not surprising as we think the error corresponds to the biases due to the use of nightlight data as an emission proxy (see the “[Non-point source comparison](#)” section). The absolute error at the provincial level is about 21.6% (note only non-point emissions), while the average provincial area is approximately  $140 \times 140$  km<sup>2</sup>. From this analysis, the error at 140 km is slightly less than 30% (without normalization). It is natural to think this comparison would yield higher errors as the provincial-level comparison is less sensitive to the subnational emission spatial distribution errors. This is another form of the emissions representation error of nightlight proxy, in addition to the emission representation errors at higher spatial scales. Oda et al. (2015) defined the gridded emission errors as:

$$E = \sqrt{(E_{est})^2 + (E_{disagg})^2},$$

where  $E_{est}$  is the errors associated with emission calculation and  $E_{disagg}$  is the error associated with disaggregation. The focus of Oda et al. (2015) was to quantify the uncertainty in global inversions due to the fossil fuel assumption. But when the formula is applied to a single downscaled gridded emission, the evaluation of the second term will be challenging. Oda et al. (2015) assumed that  $E_{disagg}$  equals zero at the global level (zero disaggregation), which is essentially what is assumed in the global inversions. But in reality, it is not zero as shown in the analysis. But this disaggregation errors should be relatively easy to fix, compared with the emission representation errors at native 1-km resolution. For example, we should be able to significantly mitigate the second emission representation errors (which we see in this subsection) by improving the subnational distribution using population.

## 4 Discussion

The analyses reported here have explored errors and uncertainties in the CO<sub>2</sub> emissions estimates of the ODIAC model. The use of the error and uncertainty estimates derived in this study is thus limited, but the estimates have practical implications to EI developers and to those who use the emissions data in atmospheric transport models. The authors believe that results could be generalized to some extent as we could use ODIAC to typify spatially explicit estimates of emissions created by taking national emissions estimates and distributing those emissions across a country using some proxy (such as satellite-observed nightlights and population) that plausibly correlates with CO<sub>2</sub> emissions.

In this section, we discuss the importance and challenges of EIs in future GHG monitoring and management, the prospects of improving emission GHG estimates using atmospheric data, the utility of the spatially explicit EIs (for both scientific and political purposes), and the future of EIs and their scientific and political applications. There were five key topics addressed in the 3 previous workshops in this series on uncertainty in emissions inventories (see Liberman et al. 2007; White et al. 2011; Ometto et al. 2015):

1. Achieving reliable GHG inventories at national and sector scales and reporting uncertainties reliably at these and finer scales,

2. Bottom-up versus top-down GHG emission analysis,
3. Reconciling short-term emissions commitments and long-term atmospheric concentration targets, detecting and analyzing GHG emission changes vis-à-vis uncertainty, and addressing issues of compliance with commitments,
4. Issues of the scale of GHG inventories, and
5. Trading emissions and emission offsets.

In this discussion, we touch on topics 2, 3, and 4 with special focus on topic 2. In the “[Perspectives towards the utility and the future of robust, spatially explicit EIs](#)” section, we focus on the utility of spatially explicit inventories and the new challenges in the era of the Paris Agreement. In the “[Recommendations for the future global emissions-inventory framework](#)” section, we discuss how to proceed to achieve more robust, more accurate, spatially explicit EIs that can act as a part of a future GHG monitoring framework under the Paris Agreement and beyond.

## 4.1 Perspectives towards the utility and the future of robust, spatially explicit EIs

### 4.1.1 New challenges for EI in the Paris era

As seen in studies, such as those of Guan et al. (2012) and Liu et al. (2015), following common, established guidelines, such as the IPCC guidelines, does not assure the accuracy of national emissions estimates. Guan et al. (2012) demonstrated a significant difference between two Chinese estimates of total-country emissions based on (1) national-level fuel statistics, which is an analogue of what is reported by the country, and (2) a collection of province-level statistics. Liu et al. (2015) found that the emission factor for coal recommended by the IPCC guidelines is larger than what they measured locally, and they suggested a downward correction to the country total emissions estimate for China. Charkovska et al. (2018) also found a similar systematic bias in the case of Poland. These are examples of biases that might not be always detected in the verification process defined in current inventory frameworks. Such biases, however, do not necessarily prevent us from keeping track of emission changes under frameworks such as the Kyoto Protocol. The emission reductions are measured as a relative change from the base year (typically, 1990). If we could reasonably assume that the errors in the EIs remain at the same level (or biased in the same way) every year, the relative change from the base year and the interannual changes (i.e., estimates of emission reduction effort) should be somewhat robust.

The authors argue, however, that the situation will change under the Paris Agreement and the two Chinese emission studies provide a good example of biases future monitoring systems need to detect. A future monitoring system will not be good enough if it just keeps track of percentage changes in emissions from a single-signatory country using reported EIs, but it needs to provide accurate estimates of how much GHG each country has emitted to the atmosphere. Accurate emission estimates are needed to clearly define each country’s responsibility under a global framework. Under the Paris Agreement, commitments for emission reductions should be made by each country in order to meet the 2 °C global target—or even below. Thus, the sum of country emission estimates needs to be consistent with the actual increase or decrease of GHG in the atmosphere and allow us to accurately project future climate. EIs will be used not only for a short-term commitment but also for long-term commitments (Jonas et al. 2014). Atmospheric inversions, for which ODIAC was originally

conceived, also need accurate FFCO<sub>2</sub> estimates in order to obtain robust estimates of past and current natural sinks and to evaluate the future sink capacity in response to changes in environmental conditions.

Under the Paris Agreement, EI reporting is mandatory for all signatory countries, including for developing countries that were exempt under the Kyoto Protocol. Many developing countries are still in need of economic development and thus are projected as major GHG emitters in the future. With data collection being a big part in EI compilation, EIs from developing countries with weak infrastructure for data collection and processing are more likely to contribute to uncertainties in global total estimates of FFCO<sub>2</sub>. Thus, one of the keys for the successful implementation of the global EI framework under the Paris Agreement is to help these countries with less experience to develop robust EIs. Estimating GHG emissions is, in fact, a challenge not only for developing countries but also for developed countries, when it comes to emission estimates at subnational levels. Emission reduction efforts at subnational levels, such as cities and states, and in the private sector (particularly at large point sources), are not accurately quantified by EIs compiled at the national level. EI compilation at the subnational level introduces a new challenge in data collection to accurately quantify emissions, for example in cities, where the boundaries in data collection are less clear. Studying the sources of uncertainty will become more important over time.

#### 4.1.2 Towards the use of atmospheric measurements

The challenges discussed in the previous subsection suggest the use of atmospheric measurements for examining EIs (for example a bottom-up vs. top-down comparison). In theory, surface emissions will lead to enhanced concentrations in the atmosphere, and these emissions can be coupled to an atmospheric model and then the calculated concentrations compared with atmospheric measurements of concentration. Biases in EIs should appear as a deviation of calculated concentrations from the atmospheric measurements. Such a top-down approach for emissions verification has been performed for some non-CO<sub>2</sub> GHGs, i.e., nitrous oxide (N<sub>2</sub>O) and methane (CH<sub>4</sub>) (Leip et al. 2018). But, FFCO<sub>2</sub> is a more challenging target for a top-down approach because of the smaller uncertainty associated with them in relation to other gases, such as N<sub>2</sub>O and CH<sub>4</sub> (White et al. 2011), and because of the presence of natural sinks and sources of CO<sub>2</sub> with large uncertainty. The use of atmospheric measurements from different platforms, such as ground-based stations, aircraft, and satellites, has been considered (see Pacala et al. 2010; Ciais et al. 2015; Pinty et al. 2017), and several studies have demonstrated the feasibility (e.g., Vogel et al. 2013; Lauvaux et al. 2016) of useful atmospheric measurements. Table 5 summarizes the current technological status of bottom-up vs. top-down analyses in general and some of their challenges and difficulties. Each type of observation has strengths and weaknesses and these change depending on the spatial and temporal scales of monitoring (e.g., national inventory vs. large emitters, fossil fuel emissions vs. biomass emissions). Feng et al. (2016b), for example, employed a high-resolution meteorological simulation with a detailed spatially explicit EI to evaluate the ability of the GHG observation network for Los Angeles to monitor the city's emissions. Globally coordinated carbon observations have been discussed by groups of international space mission partners, such as the Group of Earth Observations (GEO), in support of policy-making through global atmospheric GHG monitoring (e.g., Ciais et al. 2010). With future technological developments/improvements, such extensive observation capabilities should place us in a better position to successfully implement a system for providing a verification support for the implementation of global emissions monitoring (e.g., Ciais et al. 2015).

**Table 5** Bottom-up vs. top-down—where are we and what is still missing?

Bottom-up (BU) approach		Top-down (TD) approach		
	Current status	Challenges/Difficulties	Current status	
National	Emission estimates are available with relatively smaller uncertainty and compatible estimates across nations because of the established guidelines.	Poor data quality for some countries, need for expanded data collection, need for estimating the spatial patterns (e.g., disaggregation).	No established TD system to constrain national emissions, prototype studies have been conducted to demonstrate the concept (e.g., Ciais et al. 2015; Basu et al. 2016; Pinty et al. 2017; Wang et al. 2018)	Need for observational data to constrain emissions in the presence of fundamental difficulties (e.g., biogenic emissions, boundary conditions), cost for observational systems
Province/state	Available for some countries, but not required for reporting. We recommend this spatial level as a good meeting point for national EIs and spatial EIs for accurate emissions and verification.	No guidelines specified, data collection will be challenging	No established operational systems, but prototype studies have been conducted (e.g., Basu et al. 2016; Fischer et al. 2017).	Same as above.
City	BU emissions estimates are available for some cities on a research basis; local climate actions require some cities to report EIs.	Data collection, accuracy, consistency with larger area emissions estimates, quality assurance across cities, often not special distributions	Proven to be technologically feasible with a well-designed in situ observation network (e.g., Lauvaux et al. 2016). Satellites detect signals from cities (e.g., Kort et al. 2012; Schwander et al. 2017). The estimation methods are being studied (e.g., Ye et al. 2017). Satellites detect signals from power plants under some conditions (Nassar et al. 2017).	Data availability, background issue, presence of biogenic sources and sinks, modeling (see Lauvaux et al. 2016; Ye et al. 2017)
Point sources	Power plant data are collected in some countries, relatively easy to calculate upon data availability	Data are not globally available, geolocation errors, lack of site-level data such as site-specific facility data and operational data		Data availability and the estimation accuracy are often not good enough for operational monitoring due to errors in data, transport model calculation, and the estimation method.

Among technological development/improvements towards the establishment of an atmospheric measurements–based emission monitoring system is the continued effort of improving spatially explicit EIs. If one wants to incorporate the reported total emissions from a country into an atmospheric model in order to calculate regional and/or local concentration enhancements in the atmosphere and to compare these enhancements to observations, subnational, spatial emissions distributions need to be available; and the estimation errors associated with these subnational emissions estimates need to be reasonably small. Emissions from large-point sources (LPS), such as power plants (which need to be accurately located), and from cities should be a good target for improving the bottom-up vs. top-down analyses. Emissions from LPS are large enough to be detected even from current satellites (e.g., Pacala et al. 2010; Bovensmann et al. 2010; Nassar et al. 2017) and the detection can be enhanced with the aid of auxiliary data and/or observations (such as  $^{14}\text{C}$ ,  $\text{NO}_2$ , and  $\text{CO}$ ) for separating fossil fuel and biogenic sources. Recently, Nassar et al. (2017) demonstrated the possibility of detecting emission signals from a space-based instrument such as the OCO-2 satellite. Exploring such an approach is currently limited largely by the availability of data collected in suitable meteorological and geophysical conditions (e.g., Ye et al. 2017). More spatial and temporal data over cities and large point sources would be helpful.

A multi-scale emission modeling approach such as GESAPU will probably be the ideal candidate to serve as a part of the monitoring system for accurately introducing emission information to the global system. Challenges are the workload required to create an EI like GESAPU and that EIs reported to the United Nations Framework Convention on Climate Change (UNFCCC) do not cover the globe, which will be required to prescribe global simulations (e.g., Denier van der Gon et al. 2017). The emissions dataset EDGAR is currently closest to what will be required. EDGAR follows the IPCC guideline to calculate national emissions and it does emission spatial disaggregation in a systematic way. Although the errors and biases in the downscaled spatial emissions in EDGAR have been pointed out (e.g., Gately and Hutyra, 2017), the global systematic disaggregation has considerable value as it allows us to make the spatial emissions traceable. We need to build a framework to support the systematic development of spatially explicit EIs around the current EI framework.

#### 4.1.3 New challenges in the global EI framework

Regardless of what a future EI framework will be, we need to expand our capability of collecting data to improve the accuracy of subnational emissions estimates. As demonstrated in this study, extensive data collection (e.g., GESAPU) will allow us to characterize the biases in downscaled EIs, identify the root causes of biases, and plan a remedy for them. Reducing the uncertainties associated with the terms, such as emission factors and activity data, is important and is directly connected to the current EI system. There is a need to expand the collection of more regionally and/or sectorally varying emission factors.

But, how far do we need to expand the data collection? For example, Ciais et al. (2015) suggested a need for global emissions estimates at  $1 \text{ km}^2$  and hourly scales—an extremely challenging goal. Given the finite amount of financial and time resources, we need to come up with a reasonable plan to make the EI system as accurate as possible and help global monitoring. This study has been greatly benefited from the data granularity that GESAPU offers and highlights an ideal form of spatially explicit EIs. The multi-resolution EI of Gurney et al. (2012) is thought to be the best effort for quantifying emissions from US cities. But such detailed EIs are extremely labor-intensive and make it difficult to cover a large area or to

conduct replicate inventories over time. More input data is required and more data means more labor for quality assurance (QA) and quality checks (QC). Establishing a data collection system or guideline that allow us to make a systematic collection for EI development would greatly reduce the labor, possibly deliver EIs quicker, and reduce the level of uncertainty associated with the emission estimates. Note that Gurney et al. (2012) and Gately and Hutyra (2017) have extended their emissions over time by scaling the base year or assuming the same total emissions (see [https://daac.ornl.gov/CMS/guides/CMS\\_Carbon\\_Emissions\\_NE\\_US.html](https://daac.ornl.gov/CMS/guides/CMS_Carbon_Emissions_NE_US.html)).

In this situation, there is a significant benefit in the use of downscaled, disaggregated emissions estimates. Although this study revealed large room for improvement in disaggregated emissions estimates, it is conceptually possible to both improve disaggregation and to move towards emissions estimates that are at 1 km<sup>2</sup> and hourly scale using the ODIAC framework. As demonstrated in this study, if data are available, it is possible to downscale emissions estimates and to calibrate the ODIAC model to a regional model. The use of satellite data, such as nightlight data, has an advantage in its global and timely systematic data collection (observation) and coherence. With a wider variety of useful satellite data (e.g., nightlight, land cover, imperviousness, etc.) and geospatial statistical data (e.g., road networks, gridded demographic data, etc.), we should be able to achieve emission fields that meet the requirements of a future global system. EIs like GESAPU and disaggregation emissions estimates are complementary: in the future system and we need to come up with a complementary combination of them. GESAPU has a unique, strong significance of resolving local human activities while being a large-scale model (country level). However, GESAPU is only available for Poland and Ukraine and we have to stitch together small models and large models to achieve national and then global coverage.

We propose further that emission calculations at an intermediate administrative level such as state or province have a chance in achieving useful emission estimates from the viewpoint of data availability. At this spatial scale, the errors from emission disaggregation should be less severe. Provincial emissions estimates could be used as a regional constraint to reduce disaggregation errors due to the lack of regional differences in carbon emission drivers. This would also provide an additional verification that could be implemented in the current EI framework. As seen in the provincial-level comparison (shown in Fig. 4), the difference between GESAPU and ODIAC were only 4%, regardless of the differences in the calculation methods.

## 4.2 Recommendations for the future global emissions-inventory framework

Based on the outcome of this study, we offer three recommendations to those who build and those who use inventories of greenhouse gas emissions. These are aimed at using emission inventories for monitoring of emissions agreements and for seeking aggregate global goals for limiting global climate change.

### 4.2.1 A capacity building for extended data collection for EI development

Due to the nature of EIs, they are strongly dependent on the quantity and quality of the data collected. One of the biggest sources of difficulties is that EIs are largely based on repurposed data, data that were collected for some other purposes with attendant criteria and manners. A coordinated data collection system to support more robust EI compilation is recommended. Information on large point sources is particularly important for disaggregation purposes and



for bottom-up vs. top-down exercises. Existing efforts collecting point source emissions, such as US EPA's Emissions and Generation Resource Integrated Database (eGRID, <https://www.epa.gov/energy/emissions-generation-resource-integrated-database-egrid>), the Global Energy Observatory (<http://globalenergyobservatory.org/>), and the Global Power Plant Database recently published by the World Research Institute (<http://www.wri.org/publication/global-power-plant-database>), are close to what we would suggest, but they have missing key variables (e.g., reported emissions, timely updates, accurate geolocations). Some of these efforts are attempting to achieve global coverage, but this is not quite achieved yet. Since emissions from the power sector often account for a significant portion of national emissions, this focus on large point sources will contribute to reducing the errors associated with the national and sectoral totals. At the same time, this should help the emissions spatial disaggregation. The inventory calculation for CO<sub>2</sub> needs to be extremely accurate to claim an independent, objective monitoring capability (see Quick, 2014). Also, it means we need to expand the parameters collected for power plants such as plant-specific values and operation status. These should place a satellite application to a better position (e.g., Nassar et al. 2017).

#### 4.2.2 A consistency check at the provincial-state intermediate aggregation level

Our study demonstrated the utility of emission estimates at an intermediate level such as province or state. In some countries, just population data at this level might be useful for consistency checks. The international data collection system should support this effort. State-level data can provide an additional check on EI calculations, potentially add regional constraints, and reduce the uncertainties associated with spatially explicit EIs.

Also, state-level data should help connecting the small models and large models (or subsystem and full system). Although the disaggregation models are often unable to maintain the linkage of emission estimates and spatial extent, we can use the multi-resolution local models, such as Hestia and GESAPU, and global disaggregated models to achieve a global emission field to be used in a future monitoring system. By doing this, the separation of the emission calculation and disaggregation is mitigated. It is important for emission models to help support local climate actions as emission models can reveal emission changes from the local climate actions as a part of the global monitoring framework.

#### 4.2.3 Coordinated research efforts towards future emission monitoring system

With more data and more technological developments, we expect to obtain more robust estimates of emissions from top-down and bottom-up exercises at different scales. To examine the optimal use of future observations, simulation experiments (Observing System Simulation Experiments, OSSEs) have been conducted (e.g., Feng et al. 2016b). OSSEs provide a useful tool to design an optimal top-down vs. bottom-up exercise setup, taking observations, emissions estimates, and other environmental conditions into account (e.g., Feng et al. 2016b). To make OSSEs more effective, a key is to feed realistic statistics based on actual experiments to the simulation experiment. For example, OSSEs for cities might have to rely on only several city cases. Thus, it is important to have a coordinated effort of emission inventories, observations, and modeling. Several successful projects such as Jet Propulsion Laboratory's Megacities Carbon Project (Duren and Miller 2012, <https://megacities.jpl.nasa.gov/portal/>, see Lauvaux et al. 2016) and the Indianapolis Flux Experiment (INFLUX, <http://sites.psu.edu/influx/>) are good examples. For Poland, a coordinated effort with existing observation

projects such as Zimnoch et al. (2018) (radiocarbon measurements at Krakow) and Messerschmidt et al. (2012) (upward looking FTIR at Białystok) provide a starting point to approach emission uncertainty using a top-down vs. bottom-up approach. Such efforts need to be supported for a long term for monitoring purpose.

---

### Recommendations

1. Capacity building to support an extended, systematic data collection for EI development
  2. An EI consistency check at the provincial or state intermediate level for robust EI and for connecting EIs at different spatial levels
  3. Coordinated research efforts of EIs, atmospheric observations, and modeling towards a future emissions monitoring framework
- 

## 5 Conclusions

In this study, we evaluated the global high-resolution, gridded EI ODIAC using the multi-resolution EI GESAPU over the domain of Poland. We focused on the errors associated with the emissions disaggregation from national total to 1-km grid spaces in ODIAC by accepting GESAPU as a truth. The differences between the two data sets were thus taken as a proxy for the disaggregation error (or uncertainty). The emissions data granularity that GESAPU offers should justify us largely attributing the differences as the errors in ODIAC. The total emissions of the two EIs for Poland are very close. This study evaluated the ODIAC emission field by emission types (point and non-point) across different scales (national, provincial, and cities) and identified the root causes of the errors.

With the verified point source information from GESAPU, we took a close look at point source emissions in ODIAC and investigated the root causes of the disagreement with GESAPU emissions. The agreement between ODIAC and GESAPU in total, point source, and non-point source emissions was fairly good. However, we found the good agreement was partially dependent on consistency between emissions categories and power plant information. Errors in CARMA, a global data set on power plants, turned out to be a significant source of error in ODIAC. CARMA information seems to be reasonable for large emitting facilities, but the inclusion of small facilities brought in difficulty to the ODIAC modeling. The errors included both plant characteristics and the exact geographic locations. Comparisons with the detailed studies in GESAPU provided implications of how we should model power plant emissions in ODIAC.

As previously known, disaggregating non-point sources of emissions, here using nightlight data, to higher spatial resolution also leads to errors. This study showed the degree of goodness of disaggregated emissions estimates at the provincial level and confirmed the excellent performance of the nightlight to be a proxy for subnational, non-point emissions at this scale. We also found that population density is a slightly better predictor at this aggregated level and could potentially serve as an emission constraint for ODIAC.

We also evaluated disaggregation errors at the city level. Although we do not often expect the disaggregated emissions at the city level to be robust, the emission error level for Warsaw was 30%. This is a surprisingly good agreement given what is reported for US cities. The error seems to be dominated by the emission proxy representation errors and future improvements in nightlight data should reduce the errors.

There is a general interest in the uncertainty of emissions estimates as a function of spatial resolution. As expected, in general, the emissions uncertainty can be mitigated by aggregating emissions over space. The error level at the native spatial resolution of 1 km can be mitigated by 80% at 100 km. At 10 km, the error can be mitigated to 50%. The biggest numerical errors are attributed to the uncertainty at large point sources. Also, as suggested by the provincial-level emission comparison, even at the 400-km resolution, the errors in non-point source emissions do not converge to zero.

From the outcome of this study, the authors believe that spatially explicit emissions inventories can be improved with 3 major initiatives. These will allow emissions inventories to contribute to a future global emission monitoring framework:

1. Capacity building to support extended, systematic data collection for EI development
2. An emission EI consistency check at the provincial or state intermediate level for robust EI and connecting EIs at different spatial levels
3. Coordinated research efforts of EI, atmospheric observations, and modeling towards future emission monitoring framework

This study was solely about FFCO<sub>2</sub> but the implications from the study should apply for other compounds and monitoring frameworks that are based on spatially explicit EIs.

**Acknowledgments** The ODIAC emission data product is hosted by the National Institute for Environmental Studies (NIES), Japan.

**Funding information** TO is supported by NASA Carbon Cycle Science program (Grant No. NNX14AM76G).

## Supporting information for the ODIAC-GESAPU emission comparison

**Table 6** A list of Polish voivodeship (province) codes and full names. Population counts are based on the year 2011 version of Polish official demographic statistics (Demographic Yearbook of Poland 2011/Rocznik Demograficzny 2011) published by Polish Central Statistical Office (available from <https://stat.gov.pl/en/topics/statistical-yearbooks/statistical-yearbooks/>, access date: 25 May 2018). Note the per capita carbon (C) was calculated using non-point total provincial emissions, rather than the total provincial emissions

Code	Name	In Polish	Population (% of total)	Area in km <sup>2</sup> (% of the total)	Per capita C (tC)
DS	Lower Silesian	Dolnośląskie	2,877,840 (7.5%)	19,947 (6.4%)	1.07
KP	Kuyavian-Pomeranian	Kujawsko-pomorskie	2,069,543 (5.4%)	17,972 (5.7%)	1.09
LU	Lublin	Lubelskie	2,151,895 (5.6%)	25,122 (8.0%)	1.03
LB	Lubusz	Lubuskie	1,011,024 (2.6%)	13,988 (4.5%)	0.88
LD	Łódź	Łódzkie	2,534,357 (6.6%)	18,219 (5.8%)	1.05
MA	Lesser Poland	Małopolskie	3,310,094 (8.7%)	15,183 (4.9%)	1.02
MZ	Masovian	Mazowieckie	5,242,911 (13.7%)	35,558 (11.4%)	1.50
OP	Opole	Opolskie	1,028,585 (2.7%)	9412 (3.0%)	1.18
PK	Subcarpathian	Podkarpackie	2,103,505 (5.5%)	17,846 (5.7%)	0.92
PD	Podlaskie	Podlaskie	1,188,329 (3.1%)	20,187 (6.5%)	0.88
PM	Pomeranian	Pomorskie	2,240,319 (5.9%)	18,310 (5.9%)	1.14
SL	Silesian	Śląskie	4,635,882 (12.1%)	12,333 (3.9%)	1.30
SK	Holy Cross	Świętokrzyskie	1,266,014 (3.3%)	11,711 (3.7%)	0.98
WN	Warmian-Masurian	Warmińsko-mazurskie	1,427,241 (3.7%)	24,173 (7.7%)	0.88
WP	Greater Poland	Wielkopolskie	3,419,426 (9.0%)	29,826 (9.5%)	1.04
ZP	West Pomeranian	Zachodniopomorskie	1,693,072 (4.4%)	22,892 (7.3%)	1.00
		Total	38,200,037	312,679	1.12*

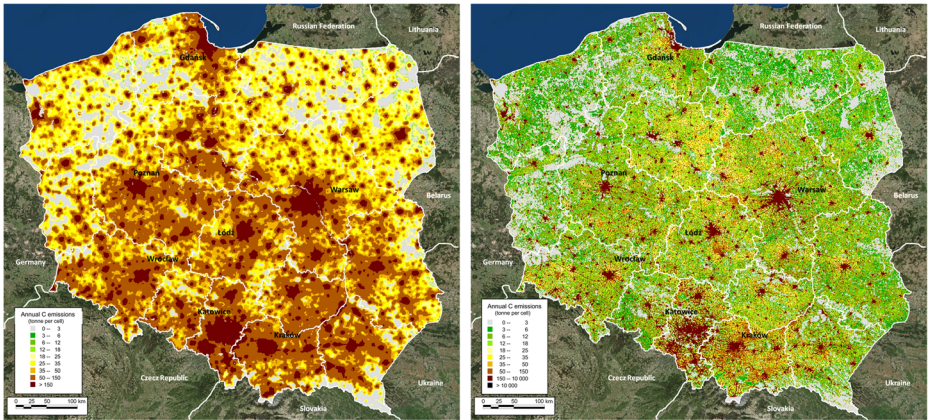
\*National average

**Table 7** CARMA-GESAPU power plant comparison. Values are taken from CARMA, not from ODIAC. Given in the unit ktC/year

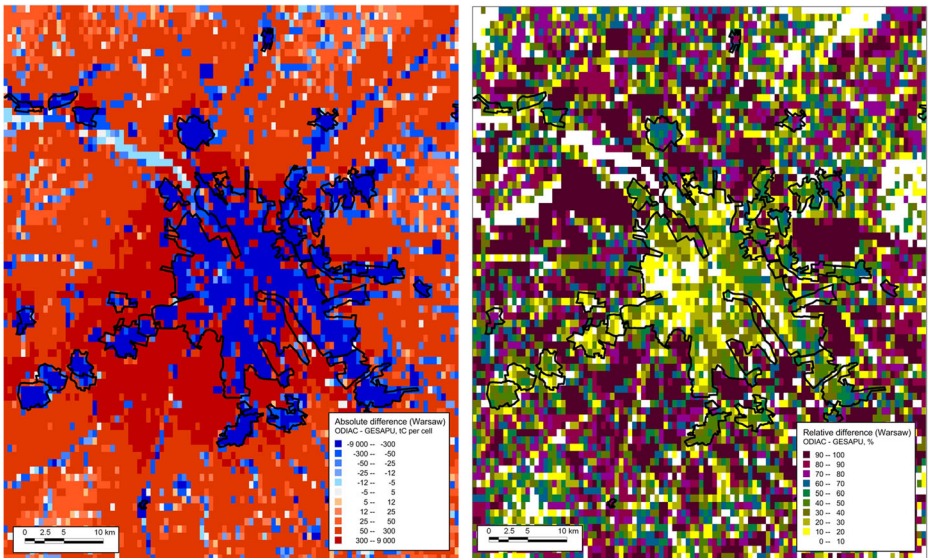
CARMA Name (ID)	GESAPU	Original CARMA (Wheeler and Ummel, 2012)			CARMA v3.0 (Ummel, 2012)		Scaling factor	
	Y2010	Y2000	Y2007	Mean	Y2004	Y2009	Y2004/ Mean	Y2009/ GESAPU
ANDROPOL (1522)	11.6	9.2	9.5	9.3	2.3	1.8	0.24	0.16
KRAKOW LEG (23019)	463.7	722.7	747.3	735.0	0	507.2	0.00	1.09
DWORY (11572)	356.0	206.0	212.8	209.4	150.4	93.0	0.72	0.26
SIERSZA (41552)	365.4	759.2	1258.9	1009.0	1105.8	886.7	1.10	2.43
SKAWINA (41886)	502.2	517.8	535.1	526.5	631.2	360.0	1.20	0.72

**Table 8** ODIAC and GESAPU provincial non-point source emissions comparison (see Fig. 2 for the provincial locations). The values are given in the unit ktC/year. The provincial totals do not sum to the non-point totals presented in Table 2. The differences are defined as ODIAC minus GESAPU. Note the differences in total numbers indicated in Table 2 (44,815 ktC/year vs. 44,773 ktC/year for ODIAC and 42,891 ktC/year vs. 42,872 ktC/year for GESAPU, approximately 0.1% differences) can be largely explained by the differences in the sampling methods. In this comparison, we sampled emission grid cells using provincial boundaries. For emission grid cells that belong to more than one province, emissions were distributed to provinces based on the fractional area

Voivodeship (province) name (code)	ODIAC	(% of the total)	GESAPU	(% of the total)	ODIAC- GESAP	Difference in %
Lower Silesian (DS)	3281	7.3%	3086	7.2%	196	6.3%
Kuyavian-Pomeranian (KP)	2446	5.5%	2254	5.3%	192	8.5%
Lublin (LU)	3288	7.3%	2220	5.2%	1068	48.1%
Lubusz (LB)	1218	2.7%	887	2.1%	331	37.4%
Łódź (LD)	3345	7.5%	2661	6.2%	684	25.7%
Lesser Poland (MA)	2898	6.5%	3380	7.9%	-482	-14.3%
Masovian (MZ)	6659	14.9%	7854	18.3%	-1196	-15.2%
Opole (OP)	1214	2.7%	1209	2.8%	5	0.4%
Subcarpathian (PK)	2462	5.5%	1945	4.5%	517	26.6%
Podlaskie (PD)	1647	3.7%	1040	2.4%	607	58.4%
Pomeranian (PM)	2592	5.8%	2560	6.0%	32	1.2%
Silesian (SL)	4021	9.0%	6016	14.0%	-1995	-33.2%
Holy Cross (SK)	1909	4.3%	1246	2.9%	663	53.2%
Warmian-Masurian (WN)	1653	3.7%	1251	2.9%	402	32.1%
Greater Poland (WP)	4387	9.8%	3566	8.3%	821	23.0%
West Pomeranian (ZP)	1754	3.9%	1698	4.0%	56	3.3%
Total	44,773	100%	42,872	100%	1901	4.4%



**Fig. 9** Non-point emissions from ODIAC (left) and GESAPU (right) over the domain of Poland. Emission fields are for the year 2010. The values are given in the unit tC/year

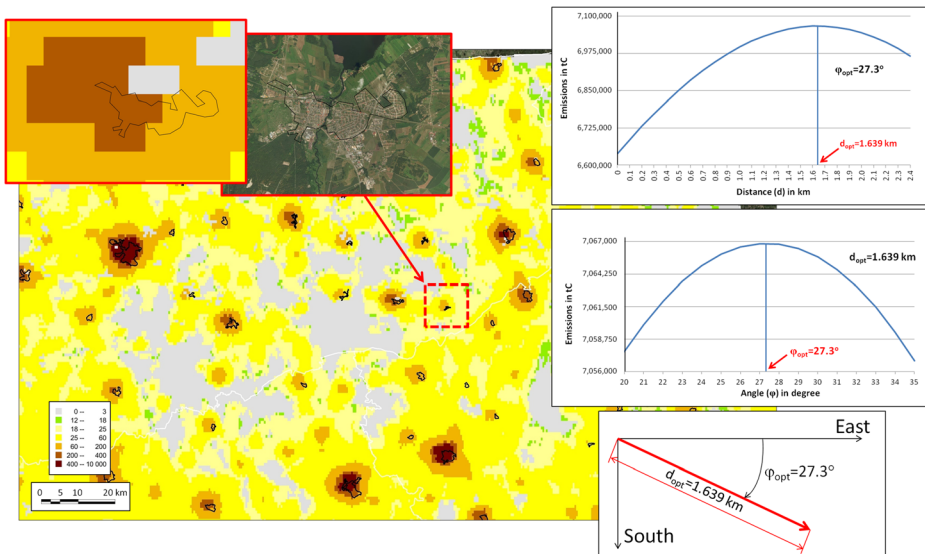


**Fig. 10** ODIAC-GESAPU absolute (left) and relative (right) differences over the Warsaw area. The differences are defined as ODIAC minus GESAPU



## Estimating the geolocation in the nightlight data

We loosely estimated the magnitude of the shift (geolocation error) we found in the nightlight spatial distribution, in which shift would appear as a spatial error (biases) in the resulting disaggregated emission fields. Here we estimate a nationwide average geolocation error, simply assuming the estimate can be obtained when the total emissions within the city boundaries (black polygons shown in Fig. 11) are maximized. We iteratively calculated the total emissions by changing (a) distance and (b) angle. The iterative optimization calculation yielded the maximum total emissions when distance = 1.6 km and angle = 27.3 degrees. Thus, the correction needs to be made by shifting the nightlight distribution by 1.6 km towards a south-east direction (with 27.3 degrees).



**Fig. 11** ODIAC non-point source emissions over a north-east part of Poland, highlighting the shifts in emissions from the city boundaries. The graphs on the right show the estimations of geolocation errors

**Open Access** This article is distributed under the terms of the Creative Commons Attribution 4.0 International License (<http://creativecommons.org/licenses/by/4.0/>), which permits unrestricted use, distribution, and reproduction in any medium, provided you give appropriate credit to the original author(s) and the source, provide a link to the Creative Commons license, and indicate if changes were made.

## References

- Andres RJ, Marland G, Fung I, Matthews E (1996) A  $1^\circ \times 1^\circ$  distribution of carbon dioxide emissions from fossil fuel consumption and cement manufacture, 1950–1990. *Global Biogeochem Cy* 10(3):419–429. <https://doi.org/10.1029/96GB01523>
- Andres RJ, Gregg JS, Losey L, Marland G, Boden TA (2011) Monthly, global emissions of carbon dioxide from fossil fuel consumption. *Tellus B* 63(3):309–327. <https://doi.org/10.1111/j.1600-0889.2011.00530.x>

- Andres RJ, Boden TA, Bréon F-M, Ciais P, Davis S, Erickson D, Gregg JS, Jacobson A, Marland G, Miller J, Oda T, Olivier JGJ, Raupach MR, Rayner P, Treanton K (2012) A synthesis of carbon dioxide emissions from fossil-fuel combustion. *Biogeosciences* 9:1845–1871. <https://doi.org/10.5194/bg-9-1845-2012>
- Andres RJ, Boden TA, Higdon D (2014) A new evaluation of the uncertainty associated with CDIAC estimates of fossil fuel carbon dioxide emission. *Tellus B Chem Phys Meteorol* 66:23616. <https://doi.org/10.3402/tellusb.v66.23616>
- Andres RJ, Boden TA, Higdon DM (2016) Gridded uncertainty in fossil fuel carbon dioxide emission maps, a CDIAC example. *Atmos Chem Phys Discuss* (in review):1–56. <https://doi.org/10.5194/acp-2016-258>
- Asefi-Najafabady S, Rayner PJ, Gurney KR, McRobert A, Song Y, Coltin K, Huang J, Elvidge C, Baugh K (2014) A multiyear, global gridded fossil fuel CO<sub>2</sub> emission data product: evaluation and analysis of results. *J Geophys Res Atmos* 119(17):10,213–10,231. <https://doi.org/10.1002/2013JD021296>
- Ballantyne AP, Alden CB, Miller JB, Tans PP, White JWC (2012) Increase in observed net carbon dioxide uptake by land and oceans during the past 50 years. *Nature* 488(7409):70–72. <https://doi.org/10.1038/nature11299>
- Baker DF, Doney SC, Schimel DS (2006) Variational data assimilation for atmospheric CO<sub>2</sub>. *Tellus B* 58(5):359–365. <https://doi.org/10.1111/j.1600-0889.2006.00218.x>
- Basu S, Miller JB, Lehman S (2016) Separation of biospheric and fossil fuel fluxes of CO<sub>2</sub> by atmospheric inversion of CO<sub>2</sub> and <sup>14</sup>CO<sub>2</sub> measurements: observation system simulations. *Atmos Chem Phys* 16:5665–5683. <https://doi.org/10.5194/acp-16-5665-2016>
- Boden TA, Marland G, Andres RJ (2016) Global, regional, and national fossil-fuel CO<sub>2</sub> emissions. Carbon Dioxide Information Analysis Center, Oak Ridge National Laboratory, U.S. Department of Energy, Oak Ridge, Tenn., U.S.A. doi: [https://doi.org/10.3333/CDIAC/00001\\_V2016](https://doi.org/10.3333/CDIAC/00001_V2016)
- Bousquet P, Ciais P, Peylin P, Ramonet M, Monfray P (1999) Inverse modeling of annual atmospheric CO<sub>2</sub> sources and sinks: 1. Method and control inversion. *J Geophys Res* 104(D21):26161–26178. <https://doi.org/10.1029/1999JD900342>
- Bovensmann H, Buchwitz M, Burrows JP, Reuter M, Krings T, Gerilowski K, Schneising O, Heymann J, Tretner A, Erzinger J (2010) A remote sensing technique for global monitoring of power plant CO<sub>2</sub> emissions from space and related applications. *Atmos Meas Tech* 3:781–811. <https://doi.org/10.5194/amt-3-781-2010>
- Boyчук K, Bun R (2014) Regional spatial inventories (cadastres) of GHG emissions in the energy sector: accounting for uncertainty. *Clim Chang* 124(3):561–574. <https://doi.org/10.1007/s10584-013-1040-9>
- Brioude J, Angevine WM, Ahmadov R, Kim S-W, Evan S, McKeen SA, Hsieh E-Y, Frost GJ, Neuman JA, Pollack IB, Peischl J, Ryerson BJ, Holloway J, Brown SS, Nowak JB, Roberts JM, Wofsy SC, Santoni GW, Oda T, Trainer M (2013) Top-down estimate of surface flux in the Los Angeles Basin using a mesoscale inverse modeling technique: assessing anthropogenic emissions of CO, NO<sub>x</sub> and CO<sub>2</sub> and their impacts. *Atmos Chem Phys* 13:3661–3677. <https://doi.org/10.5194/acp-13-3661-2013>
- Bun R, Gusti M, Kujii L, Tokar O, Tsybrivskyy Y, Bun A (2007) Spatial GHG inventory: analysis of uncertainty sources. A case study for Ukraine. *Water Air Soil Poll* 7(4–5):483–494. <https://doi.org/10.1007/s11267-006-9116-4>
- Bun R, Hamal K, Gusti M, Bun A (2010) Spatial GHG inventory on regional level: accounting for uncertainty. *Clim Chang* 103(1):227–244. <https://doi.org/10.1007/s10584-010-9907-5>
- Bun R, Nahorski Z, Horabik-Pyzel J, Danylo O, See L, Charkovska N, Topylko P, Halushchak M, Lesiv M, Valakh M, Kinakh V (2018) Development of a high resolution spatial inventory of GHG emissions for Poland from stationary and mobile sources. *Mitig Adapt Strat Gl*. <https://doi.org/10.1007/s11027-018-9791-2>
- Charkovska N, Halushchak M, Bun R, Nahorski Z, Oda T, Jonas M, Topylko P (2019) A high-definition spatially explicit inventory of greenhouse gas (GHG) emissions from the industrial processes: reducing the errors and uncertainties in global emission modelling. *Mitig Adapt Strat Gl*. <https://doi.org/10.1007/s11027-018-9836-6>
- Charkovska N, Horabik-Pyzel J, Bun R, Danylo O, Nahorski Z, Jonas M, Xu X (2018) High resolution spatial distribution and associated uncertainties of greenhouse gas emissions from the agricultural sector. *Mitig Adapt Strat Gl*. <https://doi.org/10.1007/s11027-017-9779-3>
- Chevallier F, Ciais P, Conway TJ, Aalto T, Anderson BE, Bousquet P, Brunke EG, Ciattaglia L, Esaki Y, Fröhlich M, Gomez A, Gomez-Pelaez AJ, Haszpra L, Krummel PB, Langenfelds RL, Leuenberger M, Machida T, Maignan F, Matsueda H, Morgui JA, Mukai H, Nakazawa T, Peylin P, Ramonet M, Rivier L, Sawa Y, Schmidt M, Steele LP, Vay SA, Vermeylen AT, Wofsy S, Worthy D (2010) CO<sub>2</sub> surface fluxes at grid point scale estimated from a global 21 year reanalysis of atmospheric measurements. *J Geophys Res* 115(D21):307. <https://doi.org/10.1029/2010JD013887>

- Ciais P, Rayner P, Chevallier F, Bousquet P, Logan M, Peylin P, Ramonet M (2010) Atmospheric inversions for estimating CO<sub>2</sub> fluxes: methods and perspectives. *Clim Chang* 103(1–2):69–92. <https://doi.org/10.1007/s10584-010-9909-3>
- Ciais P, Crisp D, Denier van der Gon H, Engelen R, Heimann M, Janssens-Maenhout G, Rayner P, Scholze M (2015) Towards a European operational observing system to monitor fossil CO<sub>2</sub> emissions, European Commission – ISBN 15 978-92-79-53482-9. doi: 10.2788/350433. Available: [http://edgar.jrc.ec.europa.eu/news\\_docs/CO2\\_report\\_22-10-2015.pdf](http://edgar.jrc.ec.europa.eu/news_docs/CO2_report_22-10-2015.pdf). Cited 29 Jun 2018
- Crisp D, Pollock HR, Rosenberg R, Chapsky L, Lee RAM, Oyafuso FA, Frankenberg C, O'Dell CW, Bruegge CJ, Doran GB, Eldering A, Fisher BM, Fu D, Gunson MR, Mandrake L, Osterman GB, Schwandner FM, Sun K, Taylor TE, Wennberg PO, Wunch D (2017) The on-orbit performance of the Orbiting Carbon Observatory-2 (OCO-2) instrument and its radiometrically calibrated products. *Atmos Meas Tech* 10:59–81. <https://doi.org/10.5194/amt-10-59-2017>
- Denier van der Gon HAC, Kuenen JJP, Janssens-Maenhout G, Döring U, Jonkers S, Visschedijk A (2017) TNO\_CAMS high resolution European emission inventory 2000–2014 for anthropogenic CO<sub>2</sub> and future years following two different pathways. *Earth Syst Sci Data Discuss*:1–30. <https://doi.org/10.5194/essd-2017-124>
- Danylo O, Bun R, See L, Charkovska N (2019) High resolution spatial distribution of greenhouse gas emissions in the residential sector. *Mitig Adapt Strat Gl*. <https://doi.org/10.1007/s11027-019-9846-z>
- Duren RM, Miller CE (2012) Measuring the carbon emissions of megacities. *Nat Clim Chang* 2(8):560–562. <https://doi.org/10.1038/nclimate1629>
- Elvidge CD, Baugh KE, Dietz JB, Bland T, Sutton PC, Kroehl HW (1999) Radiance calibration of DMSP-OLS lowlight imaging data of human settlements – a new device for portraying the Earth's surface entire. *Remote Sens Environ* 68(1):77–88. [https://doi.org/10.1016/S0034-4257\(98\)00098-4](https://doi.org/10.1016/S0034-4257(98)00098-4)
- Elvidge CD, Baugh KE, Zhizhin M, Hsu F-C (2013) Why VIIRS data are superior to DMSP for mapping nighttime lights. *Proceedings of the Asia-Pacific Advanced Network* 35:62–69. <https://doi.org/10.7125/apan.35.7>
- Feng L, Palmer PI, Bösch H, Dance S (2009) Estimating surface CO<sub>2</sub> fluxes from space-borne CO<sub>2</sub> dry air mole fraction observations using an ensemble Kalman filter. *Atmos Chem Phys* 9:2619–2633. <https://doi.org/10.5194/acp-9-2619-2009>
- Feng L, Palmer PI, Parker RJ, Deutscher NM, Feist DG, Kivi R, Morino I, Sussmann R (2016a) Estimates of European uptake of CO<sub>2</sub> inferred from GOSAT X<sub>CO2</sub> retrievals: sensitivity to measurement bias inside and outside Europe. *Atmos Chem Phys* 16(3):1289–1302. <https://doi.org/10.5194/acp-16-1289-2016>
- Feng S, Lauvaux T, Newman S, Rao P, Ahmadov R, Deng A, Díaz-Isaac LI, Duren RM, Fischer ML, Gerbig C, Gurney KR, Huang J, Jeong S, Li Z, Miller CE, O'Keefe D, Patarasuk R, Sander SP, Song Y, Wong KW, Yung YL (2016b) Los Angeles megacity: a high-resolution land-atmosphere modelling system for urban CO<sub>2</sub> emissions. *Atmos Chem Phys* 16(14):9019–9045. <https://doi.org/10.5194/acp-16-9019-2016>
- Fischer ML, Parazoo N, Brophy K, Cui X, Jeong S, Liu J, Keeling R, Taylor TE, Gurney K, Oda T, Graven H (2017) Simulating estimation of California fossil fuel and biosphere carbon dioxide exchanges combining in situ tower and satellite column observations. *J Geophys Res Atmos* 122:3653–3671. <https://doi.org/10.1002/2016JD025617>
- Ganshin A, Oda T, Saito M, Maksyutov S, Valsala V, Andres RJ, Fisher RE, Lowry D, Lukyanov A, Matsueda H, Nisbet EG, Rigby M, Sawa Y, Toumi R, Tsuboi K, Varlagin A, Zhuravlev R (2012) A global coupled Eulerian-Lagrangian model and 1 × 1 km CO<sub>2</sub> surface flux dataset for high-resolution atmospheric CO<sub>2</sub> transport simulations. *Geosci Model Dev* 5(1):231–243. <https://doi.org/10.5194/gmd-5-231-2012>
- Gately CK, Hutrya LR (2017) Large uncertainties in urban-scale carbon emissions. *J Geophys Res-Atmos* 122(20):11,242–11,260. <https://doi.org/10.1002/2017JD027359>
- Guan D, Liu Z, Geng Y, Lindner S, Hubacek K (2012) The gigatonne gap in China's carbon dioxide inventories. *Nat Clim Chang* 2:672–675. <https://doi.org/10.1038/nclimate1560>
- Gurney KR, Law RM, Denning AS, Rayner PJ, Baker D, Bousquet P, Bruhwiler L, Chen YH, Ciais P, Fan S, Fung IY, Gloor M, Heimann M, Higuchi K, John J, Maki T, Maksyutov S, Masarie K, Peylin P, Prather M, Pak BC, Randerson J, Sarmiento J, Taguchi S, Takahashi T, Yuen CW (2002) Towards robust regional estimates of CO<sub>2</sub> sources and sinks using atmospheric transport models. *Nature* 415:626–630. <https://doi.org/10.1038/415626a>
- Gurney KR, Chen Y-H, Maki T, Kawa SR, Andrews A, Zhu Z (2005) Sensitivity of atmospheric CO<sub>2</sub> inversions to seasonal and interannual variations in fossil fuel emissions. *J Geophys Res* 110:D10308. <https://doi.org/10.1029/2004JD005373>
- Gurney K, Razlivanov I, Song Y, Zhou Y, Benes B, Abdul-Massih M (2012) Quantification of fossil fuel CO<sub>2</sub> emission on the building/street scale for a large US city. *Environ Sci Technol* 46(21):12194–12202. <https://doi.org/10.1021/es3011282>

- Gurney KR, Liang J, O’Keefe D, Patarasuk R, Hutchins M, Huang J, Rao P, Song Y (2019) Comparison of global downscaled versus bottom-up fossil fuel CO<sub>2</sub> emissions at the urban scale in four US urban areas. *J Geophys Res Atmos* 124:2823–2840. <https://doi.org/10.1029/2018JD028859>
- Hakkarainen J, Ialongo I, Tamminen J (2016) Direct space-based observations of anthropogenic CO<sub>2</sub> emission areas from OCO-2. *Geophys Res Lett* 43(21):11,400–11,406. <https://doi.org/10.1002/2016GL070885>
- Hedelius JK, Liu J, Oda T, Maksyutov S, Roehl CM, Iraci LT, Podolske JR, Hillyard PW, Wunch D, Wennberg PO (2018) Southern California megacity CO<sub>2</sub>, CH<sub>4</sub>, and CO flux estimates using remote sensing and a Lagrangian model. *Atmos Chem Phys Discuss* (in review):1–32. <https://doi.org/10.5194/acp-2018-517>
- Hogue S, Marland E, Andres RJ, Marland G, Woodard D (2016) Uncertainty in gridded CO<sub>2</sub> emissions estimates. *Earth’s Future* 4(5):225–239. <https://doi.org/10.1002/2015EF000343>
- Hogue S, Roten D, Marland E, Marland G, Boden T (2017) Gridded estimates of CO<sub>2</sub> emissions: uncertainty as a function of grid size. *Mitig Adapt Strat Glob Change*. <https://doi.org/10.1007/s11027-017-9770-z>
- Houweling S, Baker D, Basu S, Boesch H, Butz A, Chevallier F, Deng F, Dlugokencky EJ, Feng L, Ganshin A, Hasekamp O, Jones D, Maksyutov S, Marshall J, Oda T, O’Dell CW, Oshchepkov S, Palmer PI, Peylin P, Poussi Z, Reum F, Takagi H, Yoshida Y, Zhuravlev R (2015) An intercomparison of inverse models for estimating sources and sinks of CO<sub>2</sub> using GOSAT measurements. *J Geophys Res Atmos* 120(10):5253–5266. <https://doi.org/10.1002/2014JD022962>
- Hutchins MG, Colby JD, Marland G, Marland E (2016) A comparison of five high-resolution spatially-explicit, fossil-fuel, carbon dioxide emission inventories for the United States. *Mitig Adapt Strat Gl* 22(6):947–972. <https://doi.org/10.1007/s11027-016-9709-9>
- IPCC (2006) IPCC Guidelines for national greenhouse gas inventories, prepared by the National Greenhouse Gas Inventories Programme, Eggleston HS, Buendia L, Miwa K, Ngara T, Tanabe K (eds)
- Janardanan R, Maksyutov S, Oda T, Saito M, Kaiser JW, Ganshin A, Stohl A, Matsunaga T, Yoshida Y, Yokota T (2016) Comparing GOSAT observations of localized CO<sub>2</sub> enhancements by large emitters with inventory-based estimates. *Geophys Res Lett* 43(7):3486–3493. <https://doi.org/10.1002/2016GL067843>
- Janssens-Maenhout G, Dentener F, Van Aardenne J, Monni S, Pagliari V, Orlandini L, Klimont Z, Kurokawa J, Akimoto H, Ohara, T, Wankmueller R, Battye B, Grano D, Zuber A, Keating T (2012) EDGAR-HTAP: a harmonized gridded air pollution emission dataset based on national inventories. *Ispira* (Italy): European Commission Publications Office. JRC68434, EUR report No EUR 25 299–2012, ISBN 978-92-79-23122-0, ISSN 1831-9424. <https://doi.org/10.2788/14102>
- Janssens-Maenhout G, Crippa M, Guizzardi D, Muntean M, Schaaf E, Dentener F, Bergamaschi P, Pagliari V, Olivier JGJ, Peters JAHW, van Aardenne JA, Monni S, Doering U, Petrescu AMR (2017) EDGAR v4.3.2 global atlas of the three major greenhouse gas emissions for the period 1970–2012. *Earth Syst Sci Data Discuss* (in review). <https://doi.org/10.5194/essd-2017-79>
- Jonas M, Marland G, Krey V, Wagner F, Nahorski Z (2014) Uncertainty in an emissions-constrained world. *Clim Chang* 124(3):459–476. <https://doi.org/10.1007/s10584-014-1106-6>
- Jonas M, Marland G, Winiwarter W, White T, Nahorski Z, Bun R, Nilsson S (2010) Benefits of dealing with uncertainty in greenhouse gas inventories: introduction. *Clim Chang* 103(1–2):3–18. <https://doi.org/10.1007/s10584-010-9922-6>
- Jonas M, Marland G, Winiwarter W, White T, Nahorski Z, Bun R, Nilsson S (2011) Lessons to be learned from uncertainty treatment: conclusions regarding greenhouse gas inventory. In: *Greenhouse gas inventories: dealing with uncertainty*, White Th. Et al. eds., Springer:339–343. [https://doi.org/10.1007/978-94-007-1670-4\\_20](https://doi.org/10.1007/978-94-007-1670-4_20)
- Kinakh V, Bun R, Danylo O (2018) Geoinformation technology for analysis and visualisation of high spatial resolution greenhouse gas emissions data using a cloud platform. *Advances in Intelligent Systems and Computing II* 689:217–229. [https://doi.org/10.1007/978-3-319-70581-1\\_15](https://doi.org/10.1007/978-3-319-70581-1_15)
- Kort EA, Frankenberg C, Miller CE, Oda T (2012) Space-based observations of megacity carbon dioxide. *Geophys Res Lett* 39(17):L17806. <https://doi.org/10.1029/2012GL052738>
- Kurokawa J, Ohara T, Morikawa T, Hanayama S, Janssens-Maenhout G, Fukui T, Kawashima K, Akimoto H (2013) Emissions of air pollutants and greenhouse gases over Asian regions during 2000–2008: Regional Emission inventory in ASia (REAS) version 2. *Atmos Chem Phys* 13:11019–11058. <https://doi.org/10.5194/acp-13-11019-2013>
- Lauvaux T, Miles NL, Deng A, Richardson SJ, Cambaliza MO, Davis KJ, Gaudet B, Gurney KR, Huang J, O’Keefe D, Song Y, Karion A, Oda T, Patarasuk R, Razlivanov I, Sarmiento D, Shepson P, Sweeney C, Turnbull J, Wu K (2016) High-resolution atmospheric inversion of urban CO<sub>2</sub> emissions during the dormant season of the Indianapolis flux experiment (INFLUX). *J Geophys Res-Atmos* 121(10):5213–5236. <https://doi.org/10.1002/2015JD024473>

- Leip A, Skiba U, Vermeulen A, Thompson RL (2018) A complete rethink is needed on how greenhouse gas emissions are quantified for national reporting. *Atmos Environ* 174:237–240. <https://doi.org/10.1016/j.atmosenv.2017.12.006>
- Liberman D, Jonas M, Nahorski Z, Nilsson S (eds) (2007) Accounting for climate change: uncertainty in greenhouse gas inventories – verification, compliance, and trading. Springer. ISBN 978-1-4020-5930-8. <https://doi.org/10.1007/978-1-4020-5930-8>
- Liu Z, Guan D, Wei W, Davis SJ, Ciais P, Bai J, Peng S, Zhang Q, Hubacek K, Marland G, Andres RJ, Crawford-Brown D, Lin J, Zhao H, Hong C, Boden T, Feng K, Peters GP, Xi F, Liu J, Li Y, Zhao Y, Zeng N, He K (2015) Reduced carbon emission estimates from fossil fuel combustion and cement production in China. *Nature* 524:335–338. <https://doi.org/10.1038/nature14677>
- Maksyutov S, Takagi H, Valsala VK, Saito M, Oda T, Saeki T, Belikov DA, Saito R, Ito A, Yoshida Y, Morino I, Uchino O, Andres RJ, Yokota T (2013) Regional CO<sub>2</sub> flux estimates for 2009–2010 based on GOSAT and ground-based CO<sub>2</sub> observations. *Atmos Chem Phys* 13(18):9351–9373. <https://doi.org/10.5194/acp-13-9351-2013>
- Marland G, Rotty RM (1984) Carbon dioxide emissions from fossil fuels: a procedure for estimation and results for 1950–1982. *Tellus B* 36B(4):232–261. <https://doi.org/10.3402/tellusb.v36i4.14907>
- Martin CR, Zeng N, Karion A, Mueller K, Ghosh S, Lopez-Coto I, Gurney KR, Oda T, Prasad K, Liu Y, Dickerson RR, Whetstone J (2018) Investigating sources of variability and error in simulations of carbon dioxide in an urban region. *Atmos Environ* 199:55–69. <https://doi.org/10.1016/j.atmosenv.2018.11.013>
- Messerschmidt J, Chen H, Deutscher NM, Gerbig C, Grupe P, Katrynski K, Koch F-T, Lavrič JV, Notholt J, Rödenbeck C, Ruhe W, Warneke T, Weinzierl C (2012) Automated ground-based remote sensing measurements of greenhouse gases at the Białystok site in comparison with collocated in situ measurements and model data. *Atmos Chem Phys* 12(15):6741–6755. <https://doi.org/10.5194/acp-12-6741-2012>
- Mori Y, Machimura T, Matsui T, Oda T (2015) Towards multi-scale mapping of human carbon dioxide emissions from megacity Osaka, Japan. 17th Global Emission Initiative Conference Proceedings. 2015. [https://www.geiacenter.org/sites/default/files/site/community/geia-conferences/2015/presentations/megacities\\_theme/Poster/ActualPoster/Poster\\_for\\_GEIA\\_YutakaMori.pdf](https://www.geiacenter.org/sites/default/files/site/community/geia-conferences/2015/presentations/megacities_theme/Poster/ActualPoster/Poster_for_GEIA_YutakaMori.pdf)
- Nassar R, Napier-Linton L, Gurney KR, Andres RJ, Oda T, Vogel FR, Deng F (2013) Improving the temporal and spatial distribution of CO<sub>2</sub> emissions from global fossil fuel emission data sets. *J Geophys Res-Atmos* 118(2):917–933. <https://doi.org/10.1029/2012JD018196>
- Nassar R, Hill TG, McLinden CA, Wunch D, Jones DBA, Crisp D (2017) Quantifying CO<sub>2</sub> emissions from individual power plants from space. *Geophys Res Lett* 44:10,045–10,053. <https://doi.org/10.1002/2017GL074702>
- Nisbet E, Weiss R (2010) Top-down versus bottom-up. *Science* 328:1241–1243. <https://doi.org/10.1126/science.1189936>
- Oda T, Ganshin A, Saito M, Andres RJ, Zhuravlev R, Sawa Y, Fisher RE, Rigby M, Lowry D, Tsuboi K, Matsueda H, Nisbet EG, Toumi R, Lukyanov A, Maksyutov S (2012) The use of a high-resolution emission dataset in a global Eulerian-Lagrangian coupled model. "Lagrangian modeling of the atmosphere". AGU Geophysical monograph series 200:173–184. <https://doi.org/10.1029/2012GM001263>
- Oda T, Maksyutov S (2011) A very high-resolution (1 km×1 km) global fossil fuel CO<sub>2</sub> emission inventory derived using a point source database and satellite observations of nighttime lights. *Atmos Chem Phys* 11: 543–556. <https://doi.org/10.5194/acp-11-543-2011>
- Oda T, Ganshin A, Saito M, Andres RJ, Zhuravlev R, Sawa Y, Fisher RE, Rigby M, Lowry D, Tsuboi K, Matsueda H, Nisbet EG, Toumi R, Lukyanov A, Maksyutov S (2013) The use of a high-resolution emission data set in a global Eulerian-Lagrangian coupled model. In: Lin J, Brunner D, Gerbig C, Stohl A, Luhar A, Webley P (eds) Lagrangian modeling of the atmosphere. American Geophysical Union, Washington, D. C. <https://doi.org/10.1029/2012GM001263>
- Oda T, Maksyutov S, Andres RJ (2018) The Open-source Data Inventory for Anthropogenic CO<sub>2</sub>, version 2016 (ODIAC2016): a global monthly fossil fuel CO<sub>2</sub> gridded emissions data product for tracer transport simulations and surface flux inversions. *Earth Syst Sci Data* 10:87–107. <https://doi.org/10.5194/essd-10-87-2018>
- Oda T, Maksyutov S, Elvidge CD (2010) Disaggregation of national fossil fuel CO<sub>2</sub> emissions using a global power plant database and DMSP nightlight data. *Proc of the Asia Pacific Advanced Network* 30:220–229. <https://doi.org/10.7125/APAN.30.24>
- Oda T, Maksyutov S (2015) Open-source Data Inventory for Anthropogenic CO<sub>2</sub> (ODIAC) emission dataset (ODIAC2016), National Institute for Environmental Studies, Tsukuba, Japan <https://doi.org/10.17595/20170411.001>. Available: <http://db.cger.nies.go.jp/dataset/ODIAC/>



- Oda T, Lauvaux T, Lu D, Rao P, Miles NL, Richardson SJ, Gurney KR (2017) On the impact of granularity of space-based urban CO<sub>2</sub> emissions in urban atmospheric inversions: a case study for Indianapolis. *Elem Sci Anth* 5:28. <https://doi.org/10.1525/elementa.146>
- Oda T, Ott L, Topylko P, Halushchak M, Bun R, Lesiv M, Danylo O, Horabik-Pyzel J (2015) Uncertainty associated with fossil fuel carbon dioxide (CO<sub>2</sub>) gridded emission datasets. In: *Proceedings, 4th International Workshop on Uncertainty in Atmospheric Emissions*, 7–9 October 2015, Krakow, Poland. Systems Research Institute, Polish Academy of Sciences, Warsaw, Poland, pp. 124–129. ISBN 83-894-7557-X
- Ometto JP, Bun R, Jonas M, Nahorski Z, Eds. (2015) *Uncertainties in greenhouse gas inventories - expanding our perspective*. Springer. ISBN 978-3-319-15900-3. <https://doi.org/10.1007/978-3-319-15901-0>
- Pacala SW et al. (2010) Verifying greenhouse gas emissions: methods to support international climate agreements. Committee on Methods for Estimating Greenhouse Gas Emissions; National Research Council, National Academy of Sciences, 124 pp. <https://doi.org/10.17226/12883>
- Peters W, Jacobson AR, Sweeney C, Andrews AE, Conway TJ, Masrie K, Miller JB, Bruhwiler LM, Petron G, Hirsch AI, Worthy DE, van der Werf GR, Randerson JT, Wennberg PO, Krol MC, Tans PP (2007) An atmospheric perspective on North American carbon dioxide exchange: CarbonTracker. *PNAS* 104(48): 18925–18930. <https://doi.org/10.1073/pnas.0708986104>
- Peylin P, Law RM, Gurney KR, Chevallier F, Jacobson AR., Maki T, Niwa Y, Patra PK, Peters W, Rayner PJ, Rödenbeck C, van der Laan-Luijckx IT, Zhang X (2013) Global atmospheric carbon budget: results from an ensemble of atmospheric CO<sub>2</sub> inversions. *Biogeosciences* 10:6699–6720. <https://doi.org/10.5194/bg-10-6699-2013>
- Pinty B, Janssens-Maenhout G, Dowell M, Zunker H, Brunhes T, Ciais P, Dee D, Denier van der Gon H, Dolman H, Drinkwater M, Engelen R, Heiman M, Holmlund K, Husband R, Kentarchos A, Meijer Y, Palmer P, Scholze M (2017) An operational anthropogenic CO<sub>2</sub> emissions monitoring & verification support capacity - baseline requirements, model components and functional architecture. European Commission Joint Research Centre, 25 EUR 28736 EN. doi: <https://doi.org/10.2760/08644> Available: [http://edgar.jrc.ec.europa.eu/news\\_docs/Report\\_Copernicus\\_CO2\\_Monitoring\\_TaskForce\\_2017.pdf](http://edgar.jrc.ec.europa.eu/news_docs/Report_Copernicus_CO2_Monitoring_TaskForce_2017.pdf) Cited: 10 Jul 2018
- Quick JC (2014) Carbon dioxide emission tallies for 210 U.S. coal-fired power plants: a comparison of two accounting methods. *J Air Waste Manag Assoc* 64(1):73–79
- Raupach MR, Marland G, Ciais P, Le Quéré C, Canadell JG, Klepper G, Field CB (2007) Global and regional drivers of accelerating CO<sub>2</sub> emissions. *Proc Natl Acad Sci* 104(24):10288–10293. <https://doi.org/10.1073/pnas.0700609104>
- Raupach MR, Rayner PJ, Paget M (2010) Regional variations in spatial structure of nightlights, population density and fossil fuel CO<sub>2</sub> emissions. *Energy Policy* 38(7):4756–4764. <https://doi.org/10.1016/j.enpol.2009.08.021>
- Rayner PJ, Raupach MR, Paget M, Peylin P, Koffi E (2010) A new global gridded data set of CO<sub>2</sub> emissions from fossil fuel combustion: methodology and evaluation. *J Geophys Res* 115:D19306. <https://doi.org/10.1029/2009JD013439>
- Román MO, Stokes EC (2015) Holidays in lights: tracking cultural patterns in demand for energy services. *Earth's Future* 3(6):182–205. <https://doi.org/10.1002/2014EF000285>
- Román MO, Wang Z, Sun Q, Kalb V, Miller S, Molthan A, Schultz L, Bell J, Stokes EC, Pandey B, Seto KC, Hall D, Oda T, Wolfé RE, Lin G, Golpayegani N, Devadiga S, Davidson C, Sarkar S, Praderas C, Schaltz J, Boller R, Stevens J, González OMR, Padilla E, Alonso J, Detrés Y, Armstrong R, Miranda I, Conte Y, Marrero N, MacManus K, Esch T, Masuoka EJ (2018) NASA's black marble nighttime lights product suite. *Remote Sens Environ* 210:113–143. <https://doi.org/10.1016/j.rse.2018.03.017>
- Saeki T, Maksyutov S, Sasakawa M, Machida T, Arshinov M, Tans P, Conway TJ, Saito M, Valsala V, Oda T, Andres RJ, Belikov D (2013) Carbon flux estimation for Siberia by inverse modeling constrained by aircraft and tower CO<sub>2</sub> measurements. *J Geophys Res Atmos* 118(2):1100–1122. <https://doi.org/10.1002/jgrd.50127>
- Schwandner FM, Gunson MR, Miller CE, Carn SA, Eldering A, Kring T, Verhulst KR, Schimel DS, Nguyen HM, Crisp D, O'Dell CW, Osterman GB, Iraci LT, Podolske JR (2017) Spaceborne detection of localized carbon dioxide sources. *Science* 358(6360):eaam5782. <https://doi.org/10.1126/science.aam5782>
- Shirai T, Ishizawa M, Zhuravlev R, Ganshin A, Belikov D, Saito M, Oda T, Valsala V, Gomez-Pelaez AJ, Langenfelds R, Maksyutov S (2017) A decadal inversion of CO<sub>2</sub> using the global Eulerian-Lagrangian coupled atmospheric model (GELCA): sensitivity to the ground-based observation network. *Tellus B: Chemical and Physical Meteorology* 69(1):1291158. <https://doi.org/10.1080/16000889.2017.1291158>
- Staufer J, Broquet G, Bréon F-M, Puygrenier V, Chevallier F, Xueref-Rémy I, Dieudonné E, Lopez M, Schmidt M, Ramonet M, Perrussel O, Lac C, Wu L, Ciais P (2016) The first 1-year-long estimate of the Paris region fossil fuel CO<sub>2</sub> emissions based on atmospheric inversion. *Atmos Chem Phys* 16:14703–14726. <https://doi.org/10.5194/acp-16-14703-2016>

- Takagi H, Saeki T, Oda T, Saito M, Valsala V, Belikov D, Saito R, Yoshida Y, Morino I, Uchino O, Andres RJ, Yokota T, Maksyutov S (2011) On the benefit of GOSAT observations to the estimation of regional CO<sub>2</sub> fluxes. *SOLA* 7:161–164. <https://doi.org/10.2151/sola.2011-041>
- Tans PP, Fung IY, Takahashi T (1990) Observational constraints on the global atmospheric CO<sub>2</sub> budget. *Science* 247(4949):1431–1438. <https://doi.org/10.1126/science.247.4949.1431>
- Thiruchittampalam B (2012) Entwicklung und Anwendung von Methoden und Modellen zur Berechnung von räumlich und zeitlich hochaufgelösten Emissionen in Europa, PhD Thesis at the University Stuttgart IER, Band 118
- Thompson RL, Patra PK, Chevallier F, Maksyutov S, Law RM, Ziehn T, Laan-Luijckx IT, Peters W, Ganshin A, Zhuravlev R, Maki T, Nakamura T, Shirai T, Ishizawa M, Saeki T, Machida T, Poulter B, Canadell JG, Ciais P (2016) Top-down assessment of the Asian carbon budget since the mid 1990s. *Nat Commun* 7:10724. <https://doi.org/10.1038/ncomms10724>
- Ummel K (2012) CARMA Revisited: an updated database of carbon dioxide emissions from power plant worldwide. Available: <https://www.cgdev.org/publication/carma-revisited-updated-database-carbon-dioxide-emissions-power-plants-worldwide-working>. Cited 8 Jul 2018
- Verhulst KR, Karion A, Kim J, Salameh PK, Keeling RF, Newman S, Miller J, Sloop C, Pongetti T, Rao P, Wong C, Hopkins FM, Yadav V, Weiss RF, Duren RM, Miller CE (2017) Carbon dioxide and methane measurements from the Los Angeles megacity carbon project – part 1: calibration, urban enhancements, and uncertainty estimates. *Atmos Chem Phys* 17:8313–8341. <https://doi.org/10.5194/acp-17-8313-2017>
- Vogel F, Thiruchittampalam B, Theloke J, Kretschmer R, Gerbig C, Hammer S, Levin I (2013) Can we evaluate a fine-grained emission model using high-resolution atmospheric transport modelling and regional fossil fuel CO<sub>2</sub> observations? *Tellus B* 65(1):18681. <https://doi.org/10.3402/tellusb.v65i0.18681>
- Wang Y, Broquet G, Ciais P, Chevallier F, Vogel F, Wu L, Yin Y, Wang R, Tao S (2018) Potential of European <sup>14</sup>CO<sub>2</sub> observation network to estimate the fossil fuel CO<sub>2</sub> emissions via atmospheric inversions. *Atmos Chem Phys* 18:4229–4250. <https://doi.org/10.5194/acp-18-4229-2018>
- Wheeler D, Ummel K (2008) Calculating CARMA: global estimation of CO<sub>2</sub> emissions from the power sector. Available: <https://www.cgdev.org/publication/calculating-carma-global-estimation-co2-emissions-power-sector-working-paper-145> Cited 5 Oct 2018
- White T, Jonas M, Nahorski Z, Nilsson S, Eds (2011) Greenhouse gas inventories: dealing with uncertainty. Springer. ISBN 978-94-007-1670-4. <https://doi.org/10.1007/978-94-007-1670-4>
- Wong CK, Pongetti TJ, Oda T, Rao P, Gurney KR, Newman S, Duren RM, Miller CE, Yung YL, Sander SP (2016) Monthly trends of methane emissions in Los Angeles from 2011 to 2015 inferred by CLARS-FTS observations. *Atmos Chem Phys* 16:13121–13130. <https://doi.org/10.5194/acp-16-13121-2016>
- Woodard D, Branham M, Buckingham G, Hogue S, Hutchins M, Gosky R, Marland G, Marland E (2014) A spatial uncertainty metric for anthropogenic CO<sub>2</sub> emissions. *Greenhouse Gas Meas Manage* 4(2–4):139–160. <https://doi.org/10.1080/20430779.2014.1000793>
- Wu D, Lin JC, Fasoli B, Oda T, Ye X, Lauvaux T, Yang EG, Kort EA (2018) A Lagrangian approach towards extracting signals of urban CO<sub>2</sub> emissions from satellite observations of atmospheric column CO<sub>2</sub> (XCO<sub>2</sub>): X-Stochastic Time-Inverted Lagrangian Transport model (“X-STILT v1”). *Geosci Model Dev* 11:4843–4871. <https://doi.org/10.5194/gmd-11-4843-2018>
- Ye X, Lauvaux T, Kort EA, Oda T, Feng S, Lin JC, Yang E, Wu D (2017) Constraining fossil fuel CO<sub>2</sub> emissions from urban area using OCO-2 observations of total column CO<sub>2</sub>. *Atmos Chem Phys Discuss*. <https://doi.org/10.5194/acp-2017-1022>
- Yokota T, Yoshida Y, Eguchi N, Ota Y, Tanaka T, Watanabe H, Maksyutov S (2009) Global concentrations of CO<sub>2</sub> and CH<sub>4</sub> retrieved from GOSAT: first preliminary results. *SOLA* 5:160–163. <https://doi.org/10.2151/sola.2009-041>
- Zimnoch M, Necki J, Chmura L, Jasek A, Jelen D, Galkowski M, Kuc T, Gorczyca Z, Bartyzel J, Rozanski K (2018) Quantification of carbon dioxide and methane emissions in urban areas: source apportionment based on atmospheric observations. In: Top-down assessment of CO<sub>2</sub> and CH<sub>4</sub> emissions and carbon dioxide source apportionment in urban areas based on atmospheric observations. *Mitig Adapt Strat Gl*. <https://doi.org/10.1007/s11027-018-9821-0>
- Ziskin D, Baugh K, Hsu F-C, Ghosh T, Elvidge C (2010) Methods used for the 2006 radiance lights. In: Proc. of the 30th Asia-Pacific advanced network meeting, vol 30, pp 131–142. <https://doi.org/10.7125/APAN.30.18>

## Affiliations

**Tomohiro Oda**<sup>1,2</sup> · **Rostyslav Bun**<sup>3,4</sup> · **Vitaliy Kinakh**<sup>3</sup> · **Petro Topylko**<sup>3</sup> · **Maria Halushchak**<sup>3,5</sup> · **Gregg Marland**<sup>6</sup> · **Thomas Lauvaux**<sup>7</sup> · **Matthias Jonas**<sup>5</sup> · **Shamil Maksyutov**<sup>8</sup> · **Zbigniew Nahorski**<sup>9,10</sup> · **Myroslava Lesiv**<sup>5</sup> · **Olha Danylo**<sup>3,5</sup> · **Joanna Horabik-Pyzel**<sup>9</sup>

<sup>1</sup> Global Modeling and Assimilation Office, NASA Goddard Space Flight Center, Greenbelt, MD, USA

<sup>2</sup> Goddard Earth Sciences Technology and Research, Universities Space Research Association, Columbia, MD, USA

<sup>3</sup> Lviv Polytechnic National University, Lviv, Ukraine

<sup>4</sup> WSB University, Dąbrowa Górnicza, Poland

<sup>5</sup> International Institute for Applied Systems Analysis, Laxenburg, Austria

<sup>6</sup> Department of Geological and Environmental Sciences, Appalachian State University, Boone, NC, USA

<sup>7</sup> Laboratoire des sciences du climat et de l'environnement, Gif sur Yvette, France

<sup>8</sup> Center for Global Environmental Research, National Institute for Environmental Studies, Tsukuba, Japan

<sup>9</sup> Systems Research Institute of Polish Academy of Sciences, Warsaw, Poland

<sup>10</sup> Warsaw School of Information Technology, Warsaw, Poland