



HAL
open science

Luteolin Isolated from *Juncus acutus* L., a Potential Remedy for Human Coronavirus 229E

Asma Hakem, Lowiese Desmarests, Ramla Sahli, Rawen Ben Malek, Charline Camuzet, Nathan François, Gabriel Lefèvre, Jennifer Samaillie, Sophie Moureu, Sevser Sahpaz, et al.

► **To cite this version:**

Asma Hakem, Lowiese Desmarests, Ramla Sahli, Rawen Ben Malek, Charline Camuzet, et al.. Luteolin Isolated from *Juncus acutus* L., a Potential Remedy for Human Coronavirus 229E. *Molecules*, 2023, 28 (11), pp.4263. 10.3390/molecules28114263 . hal-04237724

HAL Id: hal-04237724

<https://hal.science/hal-04237724>

Submitted on 11 Oct 2023

HAL is a multi-disciplinary open access archive for the deposit and dissemination of scientific research documents, whether they are published or not. The documents may come from teaching and research institutions in France or abroad, or from public or private research centers.

L'archive ouverte pluridisciplinaire **HAL**, est destinée au dépôt et à la diffusion de documents scientifiques de niveau recherche, publiés ou non, émanant des établissements d'enseignement et de recherche français ou étrangers, des laboratoires publics ou privés.

Article

Luteolin Isolated from *Juncus acutus* L., a Potential Remedy for Human Coronavirus 229E

Asma Hakem ^{1,2} , Lowiese Desmarests ³ , Ramla Sahli ^{1,2}, Rawen Ben Malek ¹, Charline Camuzet ³, Nathan François ³, Gabriel Lefèvre ¹, Jennifer Samaillie ¹, Sophie Moureu ¹ , Sevser Sahpaz ¹, Sandrine Belouzard ³, Riadh Ksouri ², Karin Séron ^{3,†}  and Céline Rivière ^{1,*,†} 

¹ Joint Research Unit 1158, BioEcoAgro, Univ. Lille, INRAE, Univ. Liège, UPJV, JUNIA, Univ. Artois, Univ. Littoral Côte d'Opale, ICV—Institut Charles Viollette, 59650 Villeneuve-d'Ascq, France; asma.hakem.etu@univ-lille.fr (A.H.); sahliramla@gmail.com (R.S.); rawen.ben-malek@inrae.fr (R.B.M.); gabriel.lefevre@univ-lille.fr (G.L.); jennifer.samaillie@univ-lille.fr (J.S.); sophie.moureu@gmail.com (S.M.); sevser.sahpaz@univ-lille.fr (S.S.)

² Laboratory of Aromatic and Medicinal Plants, Biotechnology Centre of Borj-Cedria (CBBC), Hammam-Lif 2050, Tunisia; ksouririadh@gmail.com

³ Center for Infection and Immunity of Lille (CIIL), Univ. Lille, CNRS, INSERM, CHU Lille, Institut Pasteur de Lille, U1019—UMR 9017, 59000 Lille, France; lowiese.desmarests@ibl.cnrs.fr (L.D.); charline.camuzet@pasteur-lille.fr (C.C.); nathanfrancoislille@gmail.com (N.F.); sandrine.belouzard@ibl.cnrs.fr (S.B.); karin.seron@ibl.cnrs.fr (K.S.)

* Correspondence: celine.riviere@univ-lille.fr; Tel.: +33-(0)3-20-96-40-41

† These authors contributed equally to this work.

Abstract: The COVID-19 pandemic, caused by SARS-CoV-2, addressed the lack of specific antiviral drugs against coronaviruses. In this study, bioguided fractionation performed on both ethyl acetate and aqueous sub-extracts of *Juncus acutus* stems led to identifying luteolin as a highly active antiviral molecule against human coronavirus HCoV-229E. The apolar sub-extract (CH₂Cl₂) containing phenanthrene derivatives did not show antiviral activity against this coronavirus. Infection tests on Huh-7 cells, expressing or not the cellular protease TMPRSS2, using luciferase reporter virus HCoV-229E-Luc showed that luteolin exhibited a dose-dependent inhibition of infection. Respective IC₅₀ values of 1.77 μM and 1.95 μM were determined. Under its glycosylated form (luteolin-7-O-glucoside), luteolin was inactive against HCoV-229E. Time of addition assay showed that utmost anti-HCoV-229E activity of luteolin was achieved when added at the post-inoculation step, indicating that luteolin acts as an inhibitor of the replication step of HCoV-229E. Unfortunately, no obvious antiviral activity for luteolin was found against SARS-CoV-2 and MERS-CoV in this study. In conclusion, luteolin isolated from *Juncus acutus* is a new inhibitor of alphacoronavirus HCoV-229E.

Keywords: HCoV-229E; SARS-CoV-2; MERS-CoV; *Juncus* species; bioguided fractionation; luteolin



Citation: Hakem, A.; Desmarests, L.; Sahli, R.; Malek, R.B.; Camuzet, C.; François, N.; Lefèvre, G.; Samaillie, J.; Moureu, S.; Sahpaz, S.; et al. Luteolin Isolated from *Juncus acutus* L., a Potential Remedy for Human Coronavirus 229E. *Molecules* **2023**, *28*, 4263. <https://doi.org/10.3390/molecules28114263>

Academic Editor: Fernando Albericio

Received: 6 May 2023

Revised: 17 May 2023

Accepted: 18 May 2023

Published: 23 May 2023



Copyright: © 2023 by the authors. Licensee MDPI, Basel, Switzerland. This article is an open access article distributed under the terms and conditions of the Creative Commons Attribution (CC BY) license (<https://creativecommons.org/licenses/by/4.0/>).

1. Introduction

Viruses are responsible for 25.4% of infectious diseases affecting human health [1]. Some of these viruses are implicated in respiratory infections causing thereby a high rate of mortality worldwide, especially in developing countries. The most well-known examples are the Spanish flu (H1N1) which occurred in Spain in 1918 and caused the death of about 50 million persons worldwide mainly due to bacterial pneumonia complications, as well as the Asian flu (H2N2) in 1957 and the Hong Kong flu (H3N2) in 1968 responsible for the death of 4 million and one million people, respectively. Over the past two decades, three highly pathogenic human coronaviruses belonging to the genus Betacoronavirus have emerged, SARS-CoV (severe acute respiratory syndrome coronavirus) and MERS-CoV (Middle East respiratory syndrome coronavirus), which were first at the origin of two new severe respiratory epidemics [2] and lately SARS-CoV-2.

The SARS-CoV originated in Southern China in 2002 has infected 8437 individuals leading to 813 deaths [3]. The MERS-CoV appeared 10 years later. This virus was isolated, for the first time, from a sputum sample of a male patient suffering from a severe pneumonia in Djeddah (Saudi Arabia) [4]. According to the World Health Organization's data, since 2012, MERS-CoV has killed 945 people with a case fatality rate of more than 30%, and the epidemic is still ongoing [5]. In December 2019, SARS-CoV-2 was identified as the infectious agent responsible for the COVID-19 pandemic. So far, it is estimated to have caused the death of more than 6.9 million people [6].

Before the emergence of these highly pathogenic coronaviruses, other human coronaviruses existed but not much attention was accorded to them because of their minor pathogenic potential. The human coronavirus 229E (HCoV-229E) was isolated in the mid-1960's and was originally discovered in Great Britain from a nasal wash of patients with cold [7]. HCoV-229E is an alphacoronavirus characterized by a single positively-charged RNA strand of about 27.7 kb [8]. Its emergence into the human population is estimated to about 200 years ago. HCoV-229E as well as other coronaviruses causing mild symptoms, notably HCoV-OC43, HCoV-NL63, and HCoV-HKU1, are well adapted to humans and do not seem to need an animal reservoir for transmission unlike the betacoronaviruses MERS-CoV, SARS-CoV and SARS-CoV-2. However, the latter now also shows a very efficient human-to-human transmission. Epidemics that have appeared during these last 20 years highlight the ability of coronaviruses to cross barriers between species causing severe pathologies in humans. This clearly underlines that this family of viruses constitutes a reservoir of emerging pathogens [9–11].

To deal with the SARS-CoV-2 pandemic, the scientific community worldwide put into action many strategies to counteract SARS-CoV-2 infection, such as blocking SARS-CoV-2 entry with monoclonal antibodies [12], impairing SARS-CoV-2 replication with polymerase or protease inhibitors [13,14], inhibiting excessive inflammatory response by repurposing already existing antivirals and broad-spectrum drugs [15,16]. While RNA vaccines have shown evidence of efficacy to prevent severe outcomes in patients, few other therapeutic options seemed to significantly reduce the symptomatology caused by SARS-CoV-2. Some therapeutic and prophylactic options to help fight COVID-19 were nonetheless developed and approved by the European Medicines Agency (EMA) and/or the Food and Drug Administration via the Emergency Use Authorizations (FDA EUAs), like for instance Monoclonal antibody treatments (mAb) and the new approved drug, Paxlovid®.

The efficacy of mAbs treatment against SARS-CoV-2 was demonstrated in several studies including clinical trials, however the anticipated activity of the different anti-SARS-CoV-2 mAb therapies varied dramatically depending on the circulating variant [17,18]. The antiviral drug Paxlovid® is prescribed once the first signs of COVID-19 infection appear to help prevent severe outcomes. This medicine was authorized for marketing across the European Union by the European Commission on the 28th of January 2022. Paxlovid® is composed of 2 drugs: nirmatrelvir, which is an orally bioavailable viral protease Mpro inhibitor and ritonavir, an inhibitor of cytochrome P450 (CYP) 3A4 and a pharmacokinetic boosting agent. Paxlovid® has proven its efficacy clinically in reducing the mortality rate [19]. Two other SARS-CoV-2 antivirals targeting the viral RNA-dependent RNA polymerase are available for COVID-19 therapy, remdesivir and molnupiravir. However, remdesivir benefits are low. Only a small effect against death or progression to ventilation was observed in hospitalized patients that had not yet been ventilated. Recent data on molnupiravir, whose mode of action apparently involves a two-step mechanism, showed no effect on death outcome of the patients [20,21].

Despite the development of highly efficient vaccines, the global fast-spreading of SARS-CoV-2 led to the emergence of multiple new variants decreasing the efficacy of both vaccines and mAb therapy. Therefore, it is clear that vaccines are part of the solution but the search for specific antiviral treatments remains challenging. In this context, our study aims to explore the plant kingdom in order to find specific antiviral natural compounds against coronaviruses, in particular against HCoV-229E, SARS-CoV-2 and MERS-CoV.

Natural products from plant species continue to hold a powerful position in drug discovery process [22]. They are renowned for their structural diversity and their promising biological activities. 42% of the total antiviral agents produced between 1981 and 2019 were derived from natural products [22,23]. So far, a number of high-throughput in silico studies highlighted the great potential of phytochemicals against coronaviruses [24,25]. In the case of our study, we are mainly seeking in vitro evidence. The choice of plant species was based on an ecological approach and we specifically selected halophytes. Even though the definition of halophytes remains debated, these plant species can simply be defined as having the ability to survive in saline environments with NaCl concentrations around 85 mM or more (up to 2 M in the case of some *Tecticornia* species) [26–29]. In a previous collaborative study, we demonstrated that dehydrojuncusol, a natural phenanthrene derivative, isolated from *Juncus maritimus* was able to inhibit hepatitis C virus replication by targeting the non-structural protein NS5A [30,31]. To conduct our study, different *Juncus* species, halophytes and glycophytes, were selected and collected from different locations in France. Bioguided fractionation was performed in order to thoroughly investigate their antiviral activity against HCoV-229E, SARS-CoV-2 and MERS-CoV coronaviruses and identify the natural bioactive compound(s).

2. Results

2.1. Antiviral Activity of Different *Juncus* Species against HCoV-229E

A primary screening based on the use of a luciferase recombinant HCoV-229E (HCoV-229E-Luc) was carried out on the crude methanolic extracts of rhizomes, stems and inflorescences of the collected *Juncus* species (*Juncus acutus* L., *Juncus inflexus* L. and *Juncus maritimus* Lam.) in order to identify the most active extract(s) against HCoV-229E. Infection was performed in Huh-7 cells expressing the transmembrane serine protease 2 (TMPRSS2). TMPRSS2 is a key enzyme in HCoV-229E and SARS-CoV-2 entry as it allows the fusion of the viral particle to the cell membrane, which is the major entry pathway for coronaviruses [32–34]. In the absence of TMPRSS2, the virus enters the cell via endocytosis and fusion with the endosomal membrane. Among all crude methanolic extracts tested at $100 \mu\text{g}\cdot\text{mL}^{-1}$ (Figure 1), the highest antiviral activities against HCoV-229E-Luc were respectively observed for *J. acutus* closed inflorescences (locality 1) = JA1 CICE, *J. acutus* rhizomes (locality 2) = JA2 RCE, *J. acutus* open inflorescences (locality 1) = JA1 OICE, *J. acutus* stems (locality 2) = JA2 SCE, and finally for *J. inflexus* rhizomes (locality 3) = JI3 RCE. The activity of these five crude extracts was quite similar.

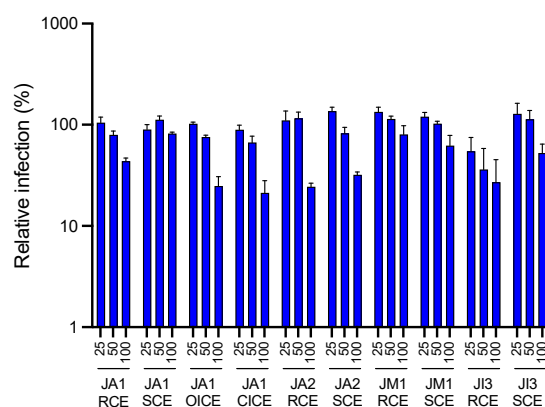


Figure 1. Antiviral activity of the different crude methanolic extracts of *Juncus* species against HCoV-229E-Luc in Huh-7/TMPRSS2 cells. Huh-7/TMPRSS2 cells were inoculated with HCoV-229E-Luc in the presence of the different extracts at 25, 50 and $100 \mu\text{g}\cdot\text{mL}^{-1}$. The cells were lysed 7 h post-inoculation and luciferase activity was quantified. Data are expressed at mean \pm SEM of 3 experiments performed in triplicate and relative to the control without extract (DMSO) for which a value of 100 was attributed. JA1 = *J. acutus* (locality 1); JA2 = *J. acutus* (locality 2); JM1 *J. maritimus* (locality 1); JI3 = *J. inflexus* (locality 3); RCE = rhizome crude extract; SCE = stem crude extract; OICE = open inflorescence crude extract; CICE = closed inflorescence crude extract.

2.2. Antiviral Activity of Sub-Extracts of *Juncus acutus* Stems (JA2) against HCoV-229E

Ecological reasons to maintain biodiversity led us to continue our study on *Juncus acutus* stems. Indeed, *Juncus* inflorescences were not the most abundant organs in terms of weight of plant raw materials. Even though their crude methanolic extracts demonstrated the most important antiviral activity, it was difficult to continue working on them. Moreover, in an effort to preserve *Juncus* plants, we also decided not to carry on the antiviral study on *J. acutus* rhizomes and *J. inflexus* rhizomes because this plant part is implicated in the vegetative replication of these species and therefore their durability. It was therefore more appropriate to perform our study on the stems of *Juncus acutus* that was collected in the locality 2 in Brittany.

In order to identify the molecule(s) responsible for this activity, bioguided fractionation was performed. At first, liquid-liquid extraction was done using solvents with increasing polarity. Three sub-extracts, methylene chloride (CH_2Cl_2), ethyl acetate (EtOAc) and aqueous were obtained and they were, in their turn, evaluated for their antiviral activity against HCoV-229E. A crude methanolic extract of *Mallotus oppositifolius* was used as a control because this latter was previously described as a highly active extract against HCoV-229E [35].

Our results showed that crude methanolic extract, as well as EtOAc and aqueous sub-extracts obtained from JA2, tested at $25 \mu\text{g}\cdot\text{mL}^{-1}$, were the most active against HCoV-229E (Figure 2). EtOAc sub-extract exhibited the most anti-HCoV-229E activity followed by the crude methanolic extract and aqueous sub-extract.

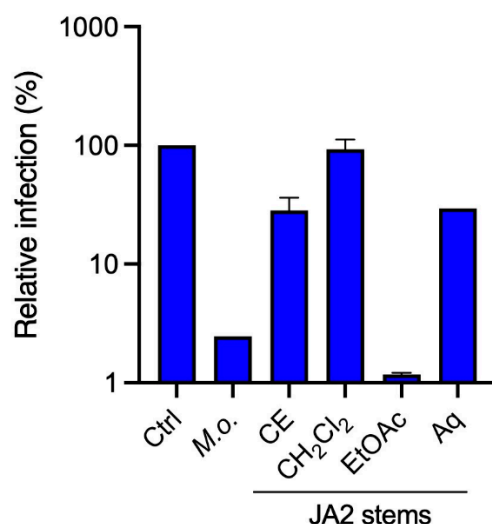


Figure 2. Antiviral activity of crude methanolic extract and sub-extracts obtained from JA2, *Juncus acutus* stems, against HCoV-229E-Luc in Huh-7/TMPRSS2 cells. Huh-7/TMPRSS2 cells were inoculated with HCoV-229E-Luc in the presence of the different extracts at $25 \mu\text{g}\cdot\text{mL}^{-1}$. The cells were lysed 7 h post-inoculation and luciferase activity was quantified. Results are expressed at the mean \pm SEM of one or two experiments performed in triplicate. Results are expressed relative to the control (DMSO).

2.3. Analysis by UHPLC-UV-MS of Sub-Extracts of *Juncus acutus* Stems (JA2)

Taking into account the polarity nature of both EtOAc and aqueous sub-extracts, it can be assumed that the compound(s) responsible for this anti-HCoV-229E activity are moderately polar constituents or polar constituents. The existing literature has highlighted the fact that flavonoids are specialized metabolites rarely isolated from *Juncus* species [36]. However, some flavones, including luteolin and some of its derivatives, have already been reported in some *Juncus* species, such as *Juncus acutus* [30,36–38].

The different sub-extracts obtained from JA2 were analyzed by UHPLC-UV-MS (Figure 3). The chromatogram of the EtOAc sub-extract at $\lambda = 254 \text{ nm}$ showed the presence of two major peaks with the corresponding retention times $R_t = 3.42 \text{ min}$ and $R_t = 4.36 \text{ min}$. Mass spectra for

these two peaks gave molecular ions $[M - H]^-$ at m/z 447 and 285, respectively. The comparison of retention times and mass spectra of these two peaks with reference standards confirmed the presence of luteolin ($R_t = 4.36$ min; $MW = 286.24$ g·mol $^{-1}$; $C_{15}H_{10}O_6$) and one of its glucoside, luteolin-7-*O*-glucoside ($R_t = 3.42$ min; $MW = 448.4$ g·mol $^{-1}$; $C_{21}H_{20}O_{11}$). These two flavones could potentially be responsible for the antiviral activity highlighted for the EtOAc sub-extract against HCoV-229E. They were also detected in the aqueous sub-extract in trace amounts, which may explain the activity close to that of the crude extract and slightly higher than that of the non-active CH_2Cl_2 sub-extract. The chromatogram of this latter, obtained by UHPLC-UV-MS, showed the presence of phenanthrene derivatives as previously detected in other *Juncus* species, such as juncusol. This class of phytochemicals was already reported in other *Juncus* species [39,40].

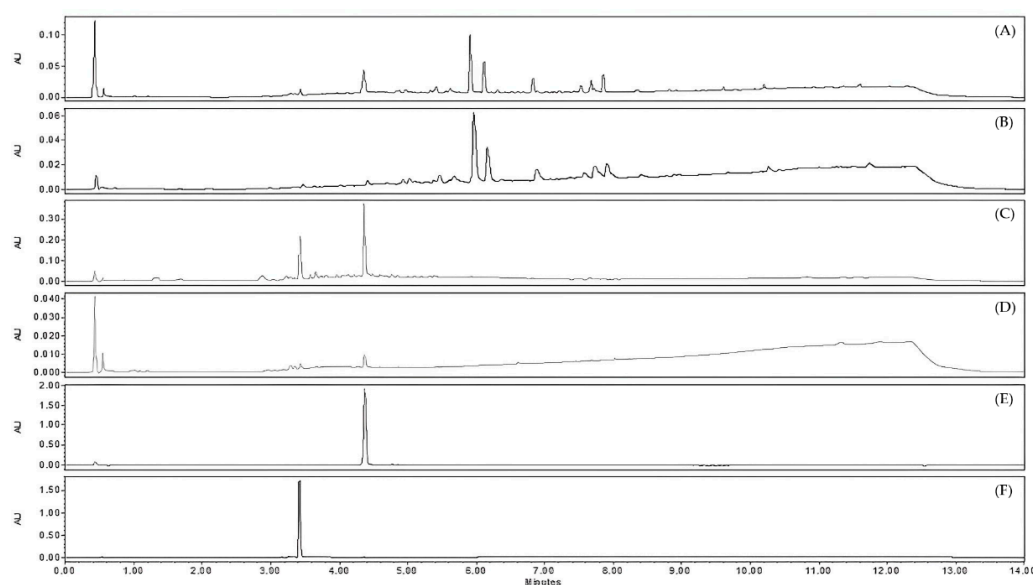


Figure 3. Chromatograms obtained by UHPLC-UV-MS at $\lambda = 254$ nm of different extracts of *J. acutus* stems (JA2) (A) crude methanolic extract, (B) CH_2Cl_2 sub-extract, (C) EtOAc sub-extract, (D) aqueous sub-extract; as well as reference standards (E) luteolin, (F) luteolin-7-*O*-glucoside.

2.4. Identification of the Active Antiviral Compound(s) from the Ethyl Acetate and the Aqueous Sub-Extracts of *Juncus acutus* Stems (JA2) following Bioguided Fractionation

In the light of the above promising antiviral activity results against HCoV-229E, it was decided to pursue bioguided fractionation process on both EtOAc and aqueous sub-extracts to identify the compound(s) responsible for this activity.

2.4.1. Antiviral Activity of Fractions Obtained from JA2 EtOAc Sub-Extract by Semi-Preparative HPLC

The fractionation of the EtOAc sub-extract of JA2 was performed by semi-preparative HPLC. The 12 pre-purified fractions were subjected to the above-mentioned antiviral activity assay against HCoV-229E. For this experiment, a lower range of concentrations was tested, 10 and 25 $\mu\text{g}\cdot\text{mL}^{-1}$.

Our results (Figure 4) clearly demonstrated that fraction F7 showed the most remarkable antiviral activity compared to the rest of the tested fractions, with a reduction of approximately 2 \log_{10} of the relative luciferase activity at 10 $\mu\text{g}\cdot\text{mL}^{-1}$.

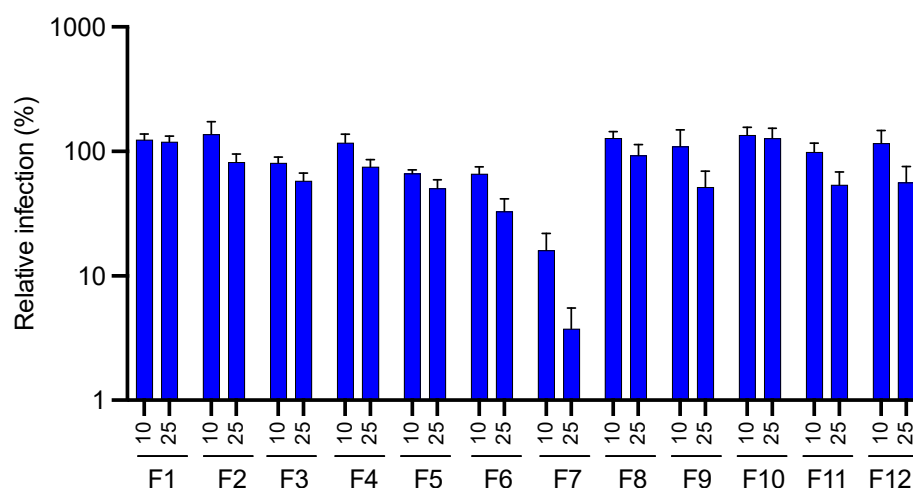


Figure 4. Anti-HCoV-229E activity of the different pre-purified fractions obtained from the EtOAc sub-extract of *J. acutus* stems (JA2) by semi-preparative HPLC. Huh-7/TMPRSS2 cells were inoculated with HCoV-229E-Luc in the presence of the different fractions (F1–F12) obtained from JA2 EtOAc sub-extract at 10 and 25 $\mu\text{g}\cdot\text{mL}^{-1}$. Luciferase activity was quantified 7 h post-inoculation. Data are presented relative to control DMSO for which a value of 100 was attributed and as mean \pm SEM of 3 independent experiments performed in triplicate.

UHPLC-UV-MS analysis were performed on the 12 fractions. The comparison of their UV chromatograms at $\lambda = 254$ nm with those of reference standards (luteolin and luteolin-7-*O*-glucoside) (Figures 5 and S1) highlighted the abundant presence of luteolin in the active fraction F7. On the basis of the PDA chromatogram, its estimated purity was about 92% according to the integration algorithm ‘Apex Track’ of the software Empower[®] version 3. Fraction F6 appeared to also contain luteolin but in a lesser amount, as well as other minor compounds. The other fractions were slightly active or inactive. Chromatograms from F8 to F12 displayed the presence of some phenanthrene derivatives such as juncusol $\text{C}_{18}\text{H}_{18}\text{O}_2$ ($R_t = 5.88$ min; $\text{MW} = 266.3$ $\text{g}\cdot\text{mol}^{-1}$). The fractions F1 to F5 were mainly consisted of luteolin-7-*O*-glucoside.

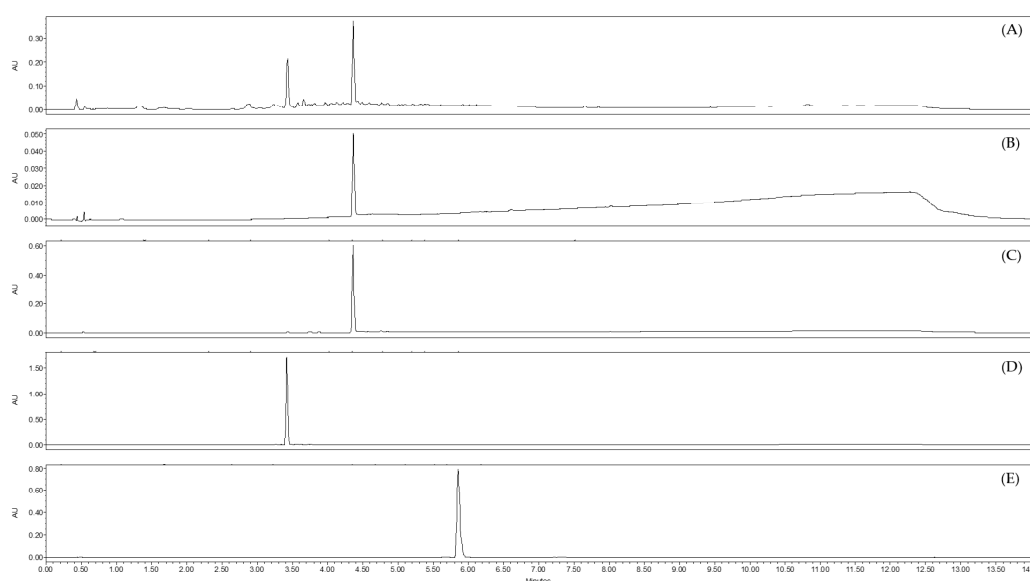


Figure 5. Chromatograms acquired by UHPLC-UV-MS at $\lambda = 254$ nm of (A) EtOAc sub-extract of *J. acutus* stems (JA2), (B) the active pre-purified fraction F7 obtained by semi-preparative HPLC from the same sub-extract, and reference standards (C) luteolin, (D) luteolin-7-*O*-glucoside and (E) juncusol (at $\lambda = 280$ nm).

All these findings supported the plausibility of our hypothesis that luteolin (Figure 6) was the flavone responsible for the antiviral activity against HCoV-229E. The glycosylated form of luteolin, luteolin-7-O-glucoside, was not active against HCoV-229E.

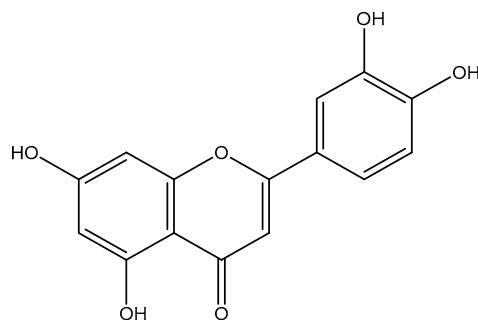


Figure 6. Luteolin.

2.4.2. Antiviral Activity of Fractions Obtained from JA2 Aqueous Sub-Extract by CPC

Compared to the EtOAc sub-extract, the aqueous sub-extract of JA2 displayed to a lesser degree an antiviral activity against the coronavirus HCoV-229E. Similarly to the EtOAc sub-extract, we wanted to identify the compound(s) responsible for this activity. For this purpose, the aqueous sub-extract was subjected to CPC fractionation using a ternary system composed of EtOAc/Isopropanol/Water (7:3:10). The 12 pre-purified fractions were grouped on the basis of similar chromatographic profiles, then were evaluated for their antiviral activity against HCoV-229E at a concentration of $50 \mu\text{g}\cdot\text{mL}^{-1}$. A higher concentration than the one used for the EtOAc fractions was used because no antiviral activity was observed at $25 \mu\text{g}\cdot\text{mL}^{-1}$.

According to our results, fractions F3 and F4 showed sequentially the highest anti-HCoV-229E activity (Figure 7). As we have previously postulated that luteolin present in both EtOAc and aqueous sub-extracts of *Juncus acutus* stems was responsible for the observed antiviral activity, we analyzed therefore the phytochemical composition of these two active pre-purified fractions by UHPLC-UV-MS. As suggested, our data (Figure 8) clearly confirmed the presence of luteolin in fractions F3 and F4. Hence, the abundance of luteolin in fraction F3 can be correlated with the antiviral activity previously observed for the same fraction. These results are in agreement with those obtained for the EtOAc sub-extract.

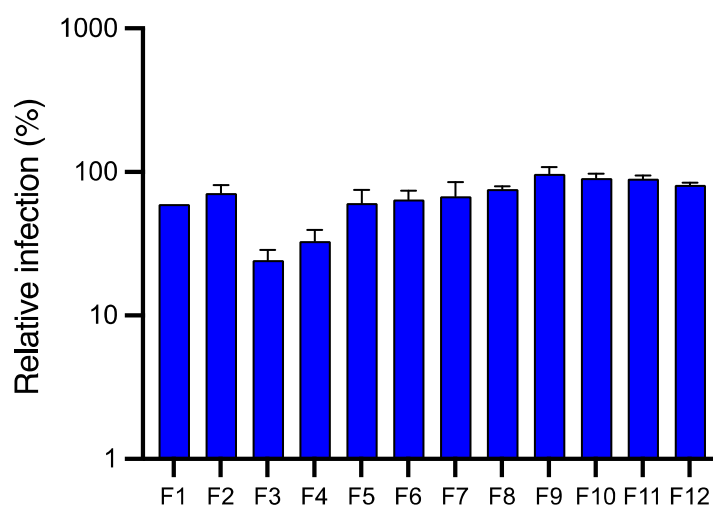


Figure 7. Anti-HCoV-229E activity of the different pre-purified fractions obtained from the aqueous sub-extract of *J. acutus* stems (JA2) by CPC. Huh-7/TMPRSS2 cells were inoculated with HCoV-229E-Luc in the presence of the different fractions (F1–F12) obtained from JA2 aqueous sub-extract at $50 \mu\text{g}\cdot\text{mL}^{-1}$. Data are expressed relative to control (DMSO) and as mean \pm SEM of 3 independent experiments performed in triplicates.

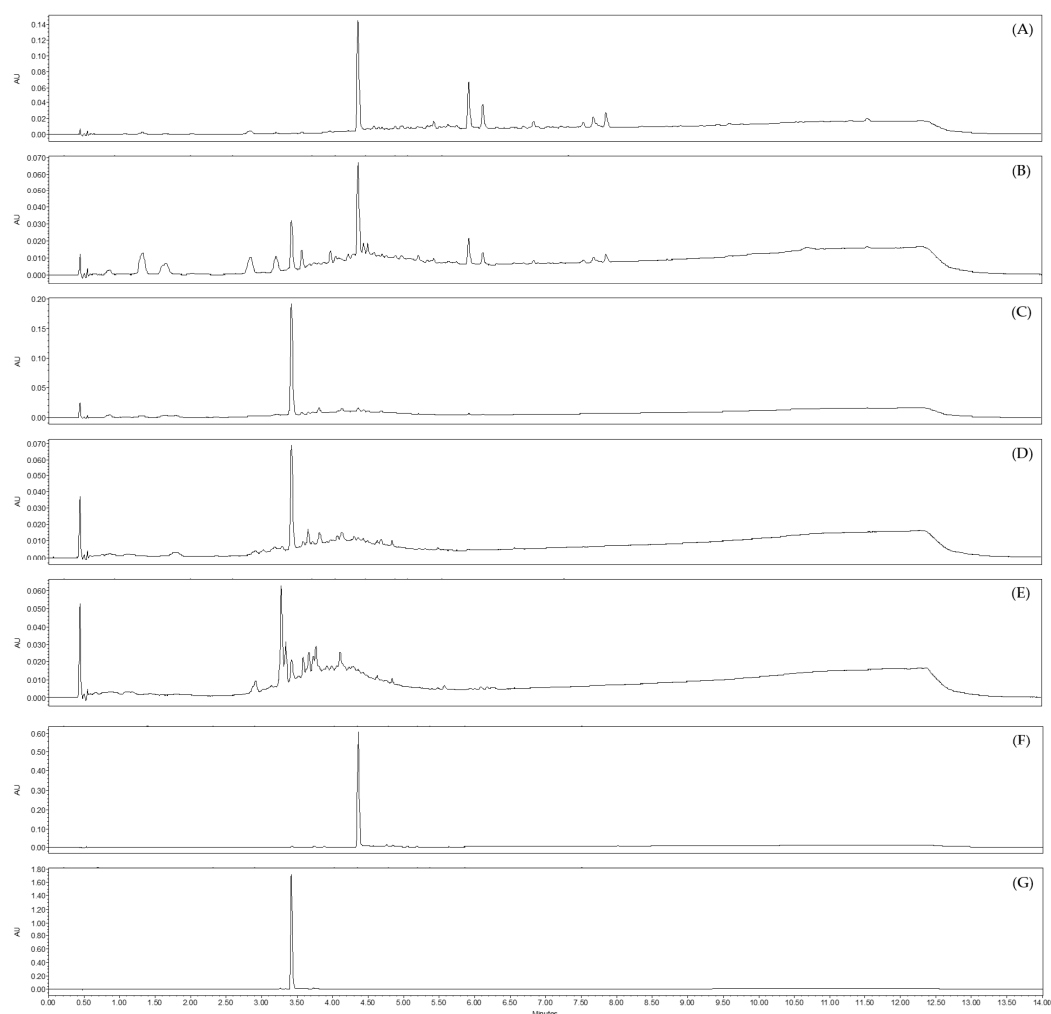


Figure 8. Chromatograms obtained by UHPLC-UV-MS at $\lambda = 254$ nm of the most active pre-purified fractions obtained by CPC from the aqueous sub-extract of *J. acutus* stems (JA2), (A) fraction F3, (B) fraction F4, as well as non-active fractions from the same sub-extract, (C) fraction F5, (D) fraction F6, (E) fraction F7. (F) luteolin and (G) luteolin-7-*O*-glucoside are reference standards.

Considering all acquired data, luteolin is undoubtedly the compound responsible for the antiviral activity against HCoV-229E of the two JA2 sub-extracts (EtOAc and aqueous). Further experiments were required in order to probe the antiviral activity of luteolin against HCoV-229E and to gain more insight into its toxicity and its potential mechanism of action.

2.5. Antiviral Activity of Luteolin against HCoV-229E and Toxicity in Huh-7 Cells

To confirm that luteolin is the active compound identified in the different pre-purified active fractions, its toxicity and its antiviral activity were tested in dose-response experiments. For toxicity, Huh-7 cells were incubated with luteolin at different concentrations for 24 h and the toxicity was quantified by MTS assay (Figure 9A). Our results showed that the half-maximal cytotoxic concentration (CC_{50}) of luteolin was approximately 33 μ M. For antiviral assays, Huh-7 cells expressing or not TMPRSS2 were inoculated with increasing concentrations of luteolin. Our data showed a dose-dependent inhibition of HCoV-229E-Luc infection confirming that luteolin was the active compound of JA2 sub-extracts (Figure 9B). The IC_{50} was similar in Huh-7 and Huh-7/TMPRSS2 cells (1.77 and 1.95 μ M, respectively) underlying thereby that luteolin exhibited an antiviral activity against HCoV-229E regardless the entry pathway. From these data, respective selectivity index (SI) values, 18.6 and 16.9, were determined. The results presented in Figure 9A clearly showed that luteolin was not toxic at active concentration.

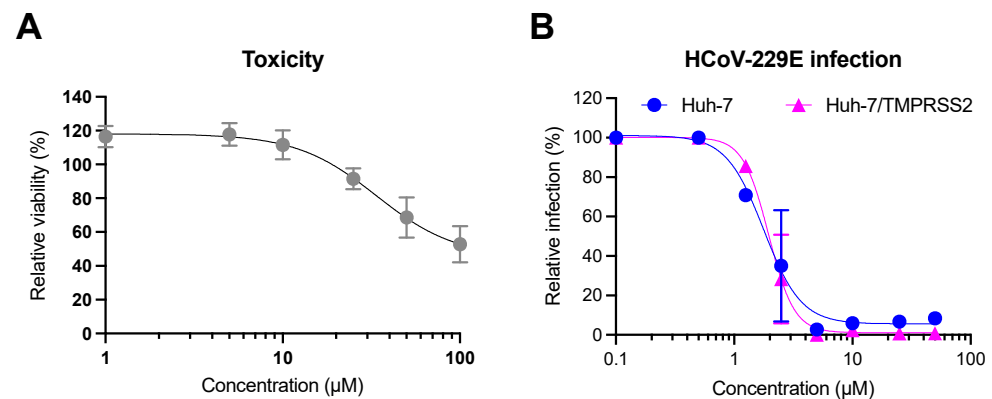


Figure 9. Toxicity and antiviral activity of luteolin. For toxicity assay (A), Huh-7 cells were incubated with different concentrations of luteolin for 24 h. The medium was replaced with MTS to determine the cell viability. For antiviral assays (B), Huh-7 cells expressing or not TMPRSS2 were inoculated with HCoV-229E-Luc in the presence of different concentration of luteolin for 1 h. The inoculum was removed and replaced with culture medium containing luteolin at the same concentration; 7 h post-inoculation, cells were lysed and luciferase activity was quantified. Results were expressed relative to the control for which a value of 100% (either viability or infection) was attributed. Results are the mean \pm SEM of 3 experiments performed in triplicates.

2.6. Mechanism of Action of Luteolin against HCoV-229E

To determine which virus infection step was inhibited by luteolin, a time of addition assay was performed. The molecule was added, at a concentration of 10 μ M, at different time points during infection (Figure 10A). Three different inhibitors were added as control, camostat, a TMPRSS2 inhibitor that inhibits entry, GC376, a protease inhibitor that inhibits replication, and remdesivir, a RdRp inhibitor that also inhibits replication. As shown in Figure 10B, luteolin was the most active when it was added at post-inoculation (PI): either 1 h PI or 2 h PI, similarly to results obtained with GC376 and remdesivir. Taken together, these data indicated that luteolin was an inhibitor of the replication step of HCoV-229E.

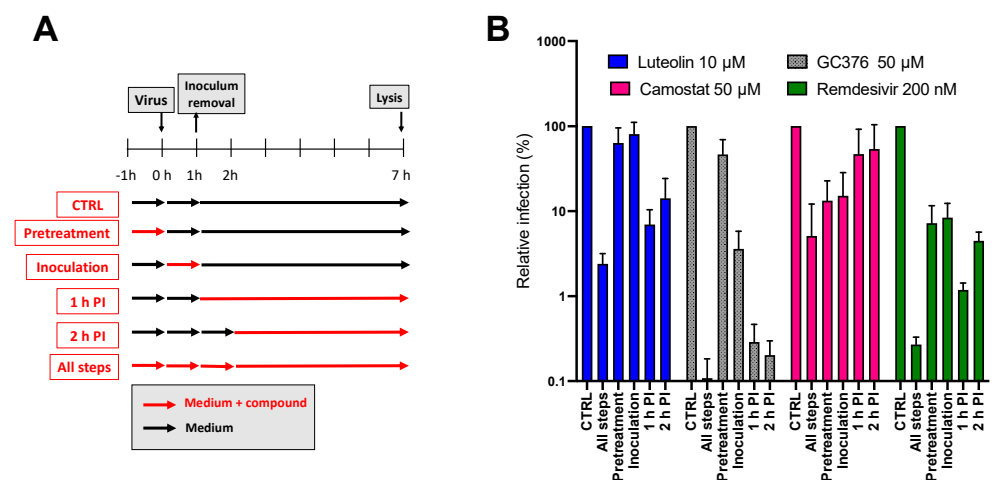


Figure 10. Luteolin is active at the replication step. (A) Schematic representation of the time of addition assay; (B) Huh-7/TMPRSS2 cells were inoculated with HCoV-229E-Luc. Luteolin (10 μ M), GC376 (50 μ M), camostat (50 μ M) and remdesivir (200 nM) were added at different time points either before, during or post-inoculation (1 h or 2 h post-inoculation). Cells were lysed 7 h post-inoculation and luciferase activity was quantified. Results were expressed relative to the control without compound for which a value of 100 was attributed. Results are means \pm SEM of 3 experiments performed in triplicate.

2.7. Antiviral Activity of Luteolin against SARS-CoV-2 and MERS-CoV

Regarding the strong activity of luteolin on HCoV-229E, the antiviral activity of this molecule was tested against highly pathogenic coronaviruses SARS-CoV-2 and MERS-CoV. GC376, a protease inhibitor or remdesivir, were added as controls. The results showed that GC376 and remdesivir inhibited SARS-CoV-2 and MERS-CoV, respectively. Unfortunately, no inhibition of infection was observed against these two viruses showing that luteolin was not active neither on SARS-CoV-2 nor on MERS-CoV. Altogether, the findings showed that luteolin is a specific replication inhibitor of HCoV-229E but has no obvious antiviral activity on SARS-CoV-2 and MERS-CoV in vitro (Figure 11).

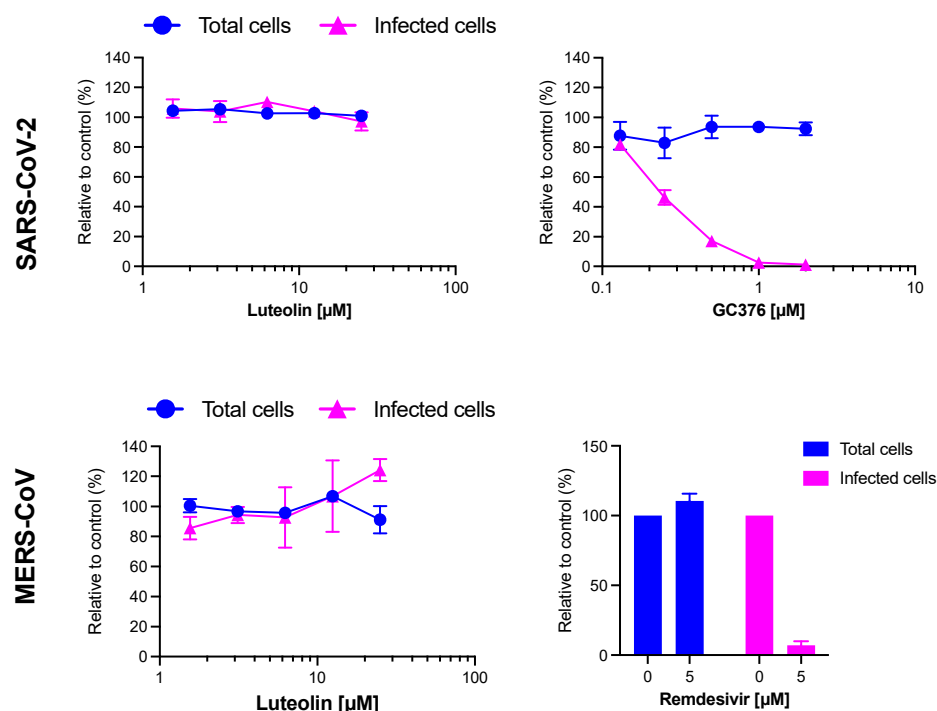


Figure 11. Luteolin is not active against SARS-CoV-2 and MERS-CoV. Vero81-derived F1G-red cells and Calu-3 cells were inoculated with SARS-CoV-2 and MERS-CoV (MOI 0.2), respectively, in the presence of increasing concentrations of luteolin or control compounds (GC376 and remdesivir for SARS-CoV-2 and MERS-CoV, respectively). For SARS-CoV-2 infection in F1Gred cells, infected cells and total cell numbers were recorded and quantified 16 h post-inoculation as previously described (Desmarets et al., 2022). For MERS-CoV infection in Calu-3 cells, cells were fixed with 4% PFA 16 h post-inoculation and immunofluorescence staining was performed against dsRNA. Nuclei were visualized with DAPI. Images were obtained with an EVOS M5000 imaging system and percentage of infected cells and total cell numbers were quantified with the Image J software version 1.5i. Data are presented as percentage of infection relative to the DMSO controls. Data are means \pm SEM of 2 independent experiments performed in triplicates.

3. Discussion

Human coronaviruses, belonging to the genus Alphacoronavirus or Betacoronavirus, have the ability to trigger symptoms with different severity; from common cold to life-threatening respiratory illnesses in the lower respiratory tract [41]. The recent outbreak of COVID-19 has pointed out the lack of clinically proven therapeutics to combat coronavirus infections. Plants are known to be a great source of antimicrobial agents [22,42]. They can be selected according to different approaches: traditional knowledge, chemotaxonomy or ecological criteria. In a previous study conducted in our laboratory, we demonstrated the relevance of the ecological approach by underlining the antiviral activity of *Juncus maritimus* against hepatitis C virus and highlighting the potential of dehydrojuncusol as a NS5A inhibitor [30,31]. In this present study, we continued to investigate the antiviral potential

of *Juncus* species, whether halophytes and glycophytes, but this time against coronavirus infections. Considering some aspects of biodiversity preservation and accessibility to resources, we have chosen to deepen the antiviral activity of the crude methanolic extract of *Juncus acutus* stems, even if other crude extracts were slightly more active (inflorescences or rhizomes). HCoV-229E was selected for the evaluation of the antiviral activity of the selected plants because of its minimal pathogenicity and its general association with asymptomatic to mild disease and sometimes acute respiratory distress syndrome [43]. Bioguided fractionation, combining conventional purification techniques (liquid-liquid extraction, semi-preparative HPLC and CPC) with in vitro antiviral experiments allowed us to identify the molecule, present in the crude methanolic extract, responsible for this activity. It is the flavone luteolin or 3',4',5,7-tetrahydroxyflavone. This specialized metabolite was the major compound of the active fraction F7 obtained from the ethyl acetate sub-extract of *J. acutus* stems. Luteolin is commonly ubiquitous throughout the plant kingdom and was described as one of the major phenolic flavonoids of soft rush (*Juncus effusus* L.) [44,45]. This flavone is frequently present under its glycosylated form in various dietary sources and medicinal plants. The health benefits of luteolin have been extensively described in literature, among them, antioxidant, anti-inflammatory, sun protectant, antimicrobial, chemoprotective and chemotherapeutic properties [46–49]. In the case of our antiviral study, luteolin was inactive against HCoV-229E under its glycosylated form, luteolin-7-O-glucoside, the main constituent of fractions F2, F3, F4 and F5 of the EtOAc sub-extract and fractions F5 and F6 of the aqueous sub-extract of *J. acutus* stems (JA2). Likewise, phenanthrene derivatives, identified in the methylene chloride sub-extract, which had previously shown an antiviral activity against hepatitis C virus, were not active against coronaviruses.

Before conducting our antiviral study against HCoV-229-E and SARS-CoV-2, it was important to ensure that luteolin does not affect cellular functions when administered at the active dose. In this study, we determined a half-maximum cytotoxic concentration (CC₅₀) equal to 33 µM for luteolin using MTS assay on Huh-7 cells. A higher CC₅₀ (155 µM) was reported on Vero E6 cells by the MTT assay [50]. In another study, luteolin showed a cytotoxic effect at 50 µM on MH14 cells, which are a derivative of the Huh-7 cell line [51].

Afterward, we determined the antiviral activity of luteolin against HCoV-229E using Huh-7 and Huh-7/TMPRSS2 cells. Similar IC₅₀ values were obtained in both cell types, 1.77 and 1.95 µM respectively. These results showed clear evidence that luteolin exhibits anti-HCoV-229E activity regardless the entry pathway.

The antiviral activity of luteolin has been highlighted in many studies against both enveloped and non-enveloped viruses; among them the Influenza A virus, the Japanese encephalitis virus, the hepatitis B virus, the human immunodeficiency virus (HIV-1), the enterovirus 71 (EV71) and the coxsackievirus A16 (CA16) [49,52–55].

Depending on the studied virus, different mechanisms of action were reported for luteolin. For enteroviruses EV71 and CA16, it was reported that luteolin targets their post-attachment stage infection and block their RNA synthesis [55]. Luteolin was also described as anti-HIV-1 molecule, precisely at the Tat-LTR transactivation (transcriptional step) [54]. Moreover, Manvar and collaborators demonstrated that luteolin can inhibit the RNA-dependent RNA polymerase (RdRp) activity of the non-structural protein 5B (NS5B) of hepatitis C virus with a IC₅₀ equal to 52 µM [51]. More recently, the in vitro antiviral activity of luteolin against influenza A virus was outlined, specifically at the early stages of its lifecycle. Evidence that luteolin blocked the absorption and internalization of influenza virus was brought to light using time of addition assay. The highlighted mode of action of luteolin in the study was the one involving the host protein COPI [49].

To gain insight into the potential mechanism of action of luteolin against HCoV-229E, we added luteolin at different time points during infection and compared its activity with those of selected inhibitors, camostat, GC376 and remdesivir. Our data showed that luteolin had an antiviral activity at the same step as GC-376 (protease inhibitor) and remdesivir (RdRp inhibitor), when it was added at post-inoculation (1 h or 2 h). These findings

indicated that luteolin is an inhibitor of the replication step of HCoV-229E. However, further experiments are needed to determine its precise mechanism of action.

One of the main challenges in the fight against HCoVs is to find broad-spectrum antivirals capable of inhibiting both alphacoronavirus and betacoronavirus. Luteolin turned out to be inactive against both SARS-CoV-2 and MERS-CoV in our in vitro experiments showing that luteolin did not have a broad-spectrum activity against all HCoVs. Its activity seemed to be specific to the alphacoronavirus HCoV-229E. It would be interesting, in the future, to test its capacity to inhibit other coronaviruses belonging to alphacoronavirus genus. Luteolin has been the subject of multiple in silico studies showcasing molecular docking simulations. Unlike our in vitro results, in silico studies highlighted a potential interest of luteolin against SARS-CoV-2 infections. It was described as an allosteric modulator of the spike protein of SARS-CoV-2 [56]. In another study, luteolin was also reported as a potent inhibitor that is capable of getting entry into the active sites of Mpro (3CLpro) and ACE2 [57]. In the same way, the inhibitory activity of luteolin against the RdRp was demonstrated in the experimental-computational study of Munafò and his collaborators [58]. However, these in silico strategies must remain complementary to the in vitro and in vivo approaches as they may have some limitations [59]. In silico analysis were not confirmed by our in vitro assays.

A study conducted by Yi et al., right after the global outburst of SARS-CoV in 2003, has identified luteolin, among other small molecules, as a potential drug, which can interfere with the entry of SARS-CoV into host cells. Thanks to the frontal affinity chromatography-mass spectrometry (FAC/MS) method, luteolin was selected because it exhibited a strong binding affinity to the fusion protein GST-S2, an S2 protein fragment that corresponds to the sequence between Asn733 to Gln1190 of the SARS-CoV S protein and plays a crucial role in the virus-cell fusion process. To investigate its antiviral activity, HIV-luc/SARS pseudotyped virus and wild-type SARS-CoV infection assays were performed on Vero E6. Respective EC₅₀ values of 9.02 µM and 10.6 µM were determined for luteolin [50]. These results suggested that luteolin could be active at the entry pathway of SARS-CoV. Despite the similarities of SARS-CoV and SARS-CoV-2, we were not able to show an activity of luteolin on SARS-CoV-2 entry. It would be interesting to determine if luteolin is active on SARS-CoV, in a cell culture assay reproducing the complete viral cycle.

A better understanding of the mechanism of action of anti-SARS-CoV-2 candidates, including molecules from plant origin, is also highly important as natural products and/or their synthetic analogues can veritably accelerate the process of discovering and developing new molecular entities with greater efficacy and affinity, and with fewer side effects. The combination of already-existing antivirals with bioactive natural compounds such as luteolin or other drugs can also be a promising approach for developing anti-coronavirus treatments [22].

The bioavailability of luteolin still deserves further study, but it appears to be absorbed quite rapidly into plasma and persists in plasma after being metabolized to glucuronide and sulfate conjugates [60,61]. Luteolin was also previously identified as a highly bioactive phytochemical in *Artemisia afra* Jacq. ex Willd (Asteraceae), a plant widely used in traditional medicine especially for treating respiratory disorders. This flavone was demonstrated to contribute significantly in the broncho-dilatory effects of *Artemisia afra* notably under its nebulized form [62]. More recently, luteolin was also the focus of a clinical trial that aimed to treat olfactory dysfunction of SARS-CoV-2-affected patients. This latter showed that supplementation with palmitoylethanolamide (PEA) combined with luteolin can greatly improve the recovery of olfactory functions [63]. Luteolin is considered non-toxic with oral LD50 value greater than 2500 mg/kg in mouse and greater than 5000 mg/kg in rats [64]. No toxicity was observed in humans when administered at a dose of 100 mg/day [61]. Taken together, our data showed that luteolin might be a promising agent against mild HCoVs. Due to its good safety and its broad-spectrum antiviral activities, luteolin could provide a clinical solution for coronavirus treatment. Further experiments are needed to determine its precise mechanism of action.

4. Materials and Methods

4.1. Plant Material

Three *Juncus* species were collected in 2 regions in France, Brittany (2 different localities: 1 and 2) and Nouvelle-Aquitaine (locality 3) during July 2018 (Table 1 and Figure 12). Botanical identification was performed by Drs. Gabriel Lefèvre and Céline Rivière and a voucher specimen for each plant was deposited at the laboratory of Pharmacognosy, University of Lille, France.

Table 1. Collected *Juncus* species used in this study.

Species	Plant Part	Region	Geographical Coordinates
<i>Juncus acutus</i> L.	rhizomes, stems, inflorescences	Brittany, locality 1	48°48′44″ North, 3°05′27″ West
<i>Juncus acutus</i> L.	rhizomes, stems	Brittany, locality 2	48°49′48″ North, 3°04′40″ West
<i>Juncus inflexus</i> L.	rhizomes, stems	Nouvelle-Aquitaine, locality 3	44°59′44″ North, 0°26′41″ West
<i>Juncus maritimus</i> Lam	rhizomes, stems	Brittany locality 1	48°48′44″ North, 3°05′27″ West

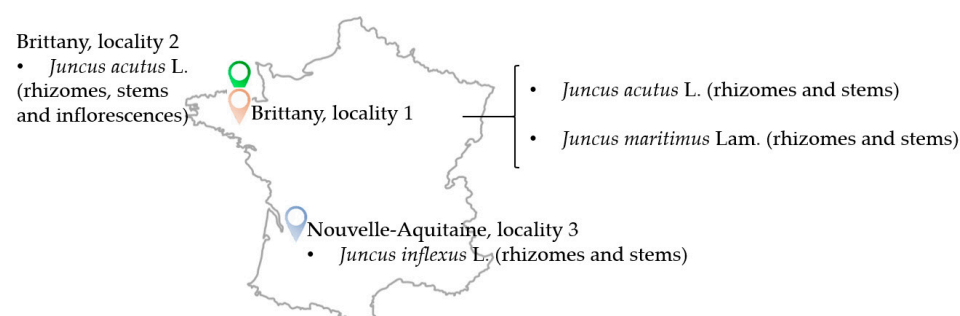


Figure 12. Illustrative map showing the locations from which *Juncus* species were collected during July 2018 (France).

4.2. Plant Extract Preparation

All collected plants were dried at 30 °C in a light protected environment. Their organs (rhizomes, stems and inflorescences) were powdered separately and stored in the dark. The crude extract of each organ was obtained by performing 4 sessions of maceration (12 h for each) in methanol, which were done at room temperature, away from light and under stirring. At the end of each maceration, the filtered methanolic extract was evaporated at 30 °C by a rotary evaporator (Heidolph™, Schwabach, Germany). The obtained dry methanolic extracts were then suspended in water in a round-bottom flask, frozen overnight and finally lyophilized at −50 °C using a freeze dryer (Telstar Cryodos™, Barcelona, Spain) for better and longer preservation. The yield of each crude methanolic extract (%) was calculated based on the dry weight (20 g for rhizomes and stems and 10 g for inflorescences) (Table 2).

Table 2. Yields of the different crude methanolic extracts obtained after solid/liquid extraction.

Species	Plant Part	Abbreviation	Yield (%)
<i>J. acutus</i> (locality 1)	rhizomes	JA1 RCE	9.6
	stems	JA1 SCE	12.3
	open inflorescences	JA1 OICE	2.7
	closed inflorescences	JA1 CICE	8.5
<i>J. acutus</i> (locality 2)	stems	JA2 SCE	11.85
	rhizomes	JA2 RCE	6.95
<i>J. maritimus</i> (locality 1)	rhizomes	JM1 RCE	11.25
	stems	JM1 SCE	11.6
<i>J. inflexus</i> (locality 3)	rhizomes	JI3 RCE	5.2
	stems	JI3 SCE	11.5

4.3. Solvent-Solvent Partition of *Juncus acutus* Stems (JA2 SCE)

Only the crude extract of *Juncus acutus* stems (5.15 g) was subjected to partitioning with liquid-liquid extraction using solvents with increasing polarity. The crude extract was suspended in water (300 mL) and the partitioning was, firstly, performed with methylene chloride (CH₂Cl₂) (Carlo Erba Reagents[®], Val de Reuil, France) (3 × 300 mL) then with ethyl acetate (EtOAc) (Carlo Erba Reagents[®], Val de Reuil, France) (3 × 300 mL). Anhydrous sodium sulfate (Na₂SO₄) was added to the organic phase in order to remove residual traces of water. After filtration, the CH₂Cl₂ phase and the EtOAc phase were evaporated using a rotary evaporator and the aqueous phase was frozen then lyophilized. The yield percentages of the three obtained sub-extracts were the following: 7.13% for the CH₂Cl₂ sub-extract, 4.54% for the EtOAc sub-extract and 72.58% for the aqueous sub-extract.

4.4. Fractionation of the EtOAc Sub-Extract of *Juncus acutus* Stems

The fractionation of the EtOAc sub-extract of *Juncus acutus* stems was performed using semi-preparative HPLC. The equipment was composed of Shimadzu[®] LC-20AP binary high-pressure pumps, a SPD-M20A photodiode array detector and a CBM-20A controller. A VisionHT C₁₈ HL (5 μm, 250 × 10 mm) column (Grace, batch number 60/036) was used in this experiment as the stationary phase. The mobile phase was composed of ultra-pure water (Millipore Integral 5 Milli-Q, Merck[™], Trosly-Breuil, France) + 0.1% formic acid (Merck[™], Darmstadt, Germany) (solvent A) and acetonitrile (Carlo Erba Reagents[®], Val de Reuil, France) (solvent B). The elution program started with 5% of solvent B to reach 100% within 60 min. The flow rate was set at 3 mL·min⁻¹. 8 injections of 12.5 mg of EtOAc sub-extract of *Juncus acutus* stems solubilized in 500 μL of MeOH were performed. The fractionation monitoring was carried out at three main wavelengths: 254 nm, 280 nm and 320 nm. 12 fractions (EtOAc F1 → EtOAc F12) were obtained at the end of the experiment. They were, later on, analyzed with UHPLC-UV-MS.

4.5. Fractionation of the Aqueous Sub-Extract of *Juncus acutus* Stems

The fractionation of the aqueous sub-extract of *Juncus acutus* stems was carried out by centrifugal partition chromatography (CPC). Several ternary systems were tested in different proportions: AcOEt/ACN/H₂O, AcOEt/Isopropanol/H₂O and AcOEt/Butanol/H₂O. The ternary system composed of EtOAc/Isopropanol/H₂O (7:3:10; v/v/v) was selected because it provided a partition coefficient (K_d) for luteolin-7-*O*-glucoside close to 1 (K_d = 1.022), whereas luteolin remained in the upper phase.

The CPC instrument (Armen instruments[®], Saint-Avé, France) was equipped with a column compartment (250 mL rotor), a Shimadzu[®] pump (LC-20AP, Kyoto, Japan), a DAD detector (SPD-M20A) and an automated fraction collector (Gilson[®] FC 204, Villiers-le-Bel, France). The elution profile was monitored by LabSolutions[™] software version 1.25.

The CPC rotor was firstly filled with the stationary phase (lower phase) at a flow rate of $30 \text{ mL}\cdot\text{min}^{-1}$ (500 rpm) in ascending mode. Equilibration was attained while introducing the mobile phase (upper phase) at 1600 rpm and a flow rate of $8 \text{ mL}\cdot\text{min}^{-1}$. 1 g of the aqueous sub-extract of *Juncus acutus* stems, previously dissolved in 8 mL of the organic/aqueous phase mixture (1:1, *v/v*) and filtered through a Millipore ($0.45 \mu\text{m}$) syringe filter, was immediately injected after the displacement of stationary phase (100 mL). The elution was done at $8 \text{ mL}\cdot\text{min}^{-1}$ for a duration of 60 min and monitored at $\lambda = 254 \text{ nm}$. After that, extrusion mode was performed to allow recover the molecules that were heavily retained in the stationary phase. At the end of the CPC run, the 105 obtained fractions were characterized by UHPLC-UV-MS and then pooled into 12 fractions according to their phytochemical profiles. The 12 fractions were then concentrated by a centrifugal concentrator (GenevacTM, Fisher-Scientific, Illkirch, France)

4.6. UHPLC-UV-MS Analysis

The Acquity UPLC H-Class Waters[®] System (Guyancourt, France) apparatus was equipped with two independent pumps, a controller, a diode array detector (DAD) and a QDa electrospray quadrupole mass spectrometer. The stationary phase was a C₁₈ BEH ($2.1 \times 50 \text{ mm}$, $1.7 \mu\text{m}$) reverse column. The mobile phase was composed of two solvents: (A) ultrapure water + 0.1% formic acid (Carlo Erba Reagents[®], Val de Reuil, France) and (B) Acetonitrile (Carlo Erba Reagents[®], Val de Reuil, France) + 0.1% formic acid. A method was specially developed for the analysis of *Juncus* extracts, sub-extracts, fractions and purified compounds. Flow rate and column temperature were set at $0.3 \text{ mL}\cdot\text{min}^{-1}$ and $30 \pm 5 \text{ }^\circ\text{C}$ respectively. Wavelength range was fixed at 200–790 nm with a resolution of 1.2 nm. Ionization was carried out in both negative and positive mode with a mass range of 100 to 950 Da. Cone voltage and capillary voltage values were 15 V and 0.8 kV respectively. Injection volume was set at 2 μL . UHPLC-UV-MS analysis were executed following the elution program: 10% → 100% (B) (0–9 min), 100% (B) (9–11 min) and 10% (B) (11–14 min). All samples were prepared at $1 \text{ mg}\cdot\text{mL}^{-1}$ in analytical grade MeOH and filtered through a PTFE $0.4 \mu\text{m}$ membrane before injection. Only standards, luteolin (Sarsyntex), luteolin-7-*O*-glycoside (Sarget) and phenanthrene derivatives such as juncusol (purified in the laboratory) were prepared at $0.1 \text{ mg}\cdot\text{mL}^{-1}$. The acquired data were compared to online databases like PubChem (<https://pubchem.ncbi.nlm.nih.gov/>) (accessed on 21 November 2022).

4.7. Cells and Culture Conditions

Human hepatoma cell line Huh-7 and African monkey kidney cell lines Vero-81 cells were grown in DMEM with glutaMAX-I and 10% FBS in an incubator at $37 \text{ }^\circ\text{C}$ with 5% CO₂. Human lung cell line Calu-3 (ATCC number HTB-55) was maintained in MEM supplemented with 10% FBS and glutaMAX-I.

4.8. Viruses

The following viral strains were used: recombinant HCoV-229E-Luc (kindly gifted by Pr. V. Thiel) [65]; SARS-CoV-2 (isolate SARS-CoV-2/human/FRA/Lille_Vero-81-TMPRSS2/2020, NCBI MW575140) and MERS-CoV (MERS-CoV-EMC12, kindly provided by Luis Enjuanes).

4.9. Cell Toxicity Assay

6×10^4 Huh-7 cells were seeded in 96-well plates and incubated for 16 h at $37 \text{ }^\circ\text{C}$ 5% CO₂ incubator. The cells were then treated with increasing concentrations of each extract, fraction or compound and incubated at $37 \text{ }^\circ\text{C}$ 5% CO₂ for 23 h. An MTS [3-(4,5-dimethylthiazol-2-yl)-5-(3-carboxymethoxyphenyl)-2-(4-sulfophenyl)-2H-tetrazolium]-based viability assay (Cell Titer 96 Aqueous non-radioactive cell proliferation assay, Promega) was performed as recommended by the manufacturer. The absorbance of formazan at $\lambda = 490 \text{ nm}$ was detected using a plate reader (ELX 808 Bio-Tek Instruments Inc., Charlotte,

VT, USA). Each measure was performed in triplicate and each experiment was repeated at least 3 times.

4.10. Antiviral Activity Assay on HCoV-229E

Hepatoma cell line Huh-7 and Huh-7 cells transduced with a lentivirus encoding for TMPRSS2 protease, a cellular protease that allows fusion of the virus at the host cell surface (Huh-7/TMPRSS2), were used for all HCoV-229E infection assays. All the above-mentioned samples from *Juncus acutus* stems were screened for their antiviral activity against HCoV-229E-Luc expressing the luciferase, a recombinant HCoV-229E with luciferase reporter gene. Huh-7 cells seeded in 96-well plates were inoculated with HCoV-229E-Luc in the presence of each extract, fraction or compound for 1 h. Inoculum was then removed and replaced with culture medium containing the compounds for another 6 h. Finally, cells were lysed in 20 μ L of Renilla lysis buffer (Promega) and luciferase activity was quantified using Renilla luciferase assay kit (Promega). Luciferase activity was measured by the use of a Tristar LB941 luminometer (Berthold Technologies, Bad Wildbad, Germany).

4.11. SARS-CoV-2 Infection Assay

A Vero-81 reporter cell line for SARS-CoV-2 infection, F1G-Red, was used in this study. F1G-red cells were seeded in 384-well plates at a concentration of 4000 cells per well. The next day, cells were inoculated with SARS-CoV-2 (MOI 0.2) in the presence of 50 nM tariquidar and increasing doses of luteolin (0, 1.56, 3.13, 6.25, 12.5 or 25 μ M) or GC376 (0, 0.125, 0.250, 0.5, 1 or 2 μ M). 16 h post-inoculation, image acquisition was performed using an InCell-6500 automated confocal microscope (Cytiva) and percentages of infection and total cell numbers were assessed as described before [66].

4.12. MERS-CoV Infection Assay

Calu-3 cells, seeded on coverslips 24 h before inoculation, were inoculated with MERS-CoV at an MOI of 0.2 in the presence of increasing doses of luteolin (0, 1.56, 3.13, 6.25, 12.5 or 25 μ M) or remdesivir (0 or 5 μ M). 16 h post-inoculation, cells were fixed with 4% PFA. After permeabilization with 0.1% Triton-X100 in PBS for 5 min at RT, cells were incubated with 10% normal goat serum for 20 min at RT. Viral dsRNA was visualized by incubation with mouse monoclonal anti-dsRNA antibodies (clone J2, Scicons) in 10% normal goat serum, followed by incubation with Alexa Fluor[®] 488-conjugated goat-anti-mouse IgG secondary antibodies. Nuclei were visualized with 1 μ g/mL of 4',6-diamidino-2-phenylindole (DAPI), and coverslips were mounted in Mowiol[®] mounting medium. Images were obtained with an EVOS M5000 imaging system and percentage of infected cells and total cell numbers were quantified with the Image J software version 1.5i.

5. Conclusions

Luteolin, isolated from *Juncus acutus* stems, showed a very strong antiviral activity against the alphacoronavirus HCoV-229E. Our study underlined that this ubiquitous flavone acts as an inhibitor of the replication step. The identification of its exact target could be a future perspective. On the other hand, the activity of luteolin could not be demonstrated against the betacoronaviruses, SARS-CoV-2 and MERS-CoV. This flavone is therefore not active against all of the members of the *Coronaviridae* family, suggesting that it could target a HCoV-229E protein(s) or a cellular factor specifically involved in HCoV-229E RNA replication. Moreover, our results are in discordance with some in silico studies focused on luteolin and highlight the relevance of using traditional in vitro strategies. To conclude, luteolin is showing promising results and could serve as a lead for further drug development in the treatment of coronavirus based on different strategies such as nanotechnology, pharmacomodulation, combination drug therapies or even a prodrug strategy [67].

Supplementary Materials: The following supporting information can be downloaded at: <https://www.mdpi.com/article/10.3390/molecules28114263/s1>, Figure S1: Chromatograms acquired by UHPLC-UV-MS, at $\lambda = 254$ nm, of the different pre-purified fractions (F1 → F12) from the ethyl acetate sub-extract of *J. acutus* stems and of reference standards luteolin, luteolin-7-O-glucoside and juncusol (at $\lambda = 280$ nm).

Author Contributions: Conceptualization, L.D., R.S., G.L., S.B., K.S. and C.R.; Formal analysis, A.H., L.D., R.B.M., C.C., J.S., S.M., S.B., K.S. and C.R.; Funding acquisition, R.S., R.K., K.S. and C.R.; Investigation, A.H., L.D., R.B.M., C.C., N.F., G.L., J.S., S.M., S.B., K.S. and C.R.; Methodology, A.H., L.D., S.B., K.S. and C.R.; Project administration, S.S., R.K. and C.R.; Supervision, R.K. and C.R.; Validation, K.S. and C.R.; Writing—original draft, A.H., K.S. and C.R.; Writing—review & editing, L.D., K.S. and C.R. All authors have read and agreed to the published version of the manuscript.

Funding: This research and the PhD of A.H. were supported by the PHC Utique 2020–2022 Program (Campus France code: 44197ZG & Comité Mixte franco-tunisien pour la coopération universitaire “CMCU” code: 20G0822), which is a French-Tunisian partnership, the MOBILLEX grant provided by the University of Lille and the scholarships (Bourse alternance, 2020–2021 Edition code 2020-BALT-806 & 2021–2022 Edition code 2021-BALT-114, University of Carthage) provided by the Tunisian Ministry of Higher Education and Scientific Research.

Institutional Review Board Statement: Not applicable.

Data Availability Statement: Not applicable.

Acknowledgments: Authors are grateful to Nathalie Azaroual and the engineers Vincent Ultré and Alexandre Rech for their help to accessing NMR equipment (LARM, University of Lille, France).

Conflicts of Interest: The authors declare no conflict of interest.

Sample Availability: Luteolin and luteolin-7-O-glucoside were purified from stems of *Juncus acutus* L. (JA2 SCE), whereas juncusol was purified from rhizomes of *Juncus inflexus* L. (J13 RCE). The three compounds were identified by NMR. Reference molecules and *Juncus* extracts are available at the Laboratory of Pharmacognosy (Joint Research Unit 1158, BioEcoAgro, Univ. Lille). Some reference samples such as luteolin (Sarsyntex) and luteolin-7-O-glucoside (Sarget) are also available.

Abbreviations

CH₂Cl₂: Methylene chloride; CICE, Closed inflorescence crude extract; COVID-19, Coronavirus disease; CPC, Centrifugal Partition Chromatography; CYP, Cytochrome; DMSO, Dimethylsulfoxide; EtOAc, Ethyl acetate; H1N1, Influenza A virus subtype H1N1; H2N2, Influenza A virus subtype H2N2; H3N2, Influenza A virus subtype H3N2; HCoV-229E, Human coronavirus 229E; HPLC, High-Performance Liquid Chromatography; Huh-77, Human hepatoma cell lines; MeOH, Methanol; MERS-CoV, Middle East Respiratory Syndrome Coronavirus; NS5A, Non-structural protein 5A; OICE, Open inflorescences crude extract; RNA, Ribonucleic acid; RCE, Rhizome crude extract; SARS-CoV, Severe Acute Respiratory Syndrome Coronavirus; SARS-CoV-2, Severe Acute Respiratory Syndrome Coronavirus 2; SCE, Stem crude extract; TMPRSS2, Transmembrane protease serine 2; UHPLC-UV-MS, Ultra-High-Performance Liquid Chromatography-Ultraviolet-Mass Spectrometry.

References

1. Sa, T.; Syed, N. The Future of Humanity and Microbes: Impact of Emerging Infectious Diseases on Global Health and Economies. *IJSR* **2013**, *4*, 2427–2442.
2. Masters, P.S.; Perlman, S. Coronaviridae. *Fields Virol.* **2013**, *1*, 825–858.
3. WHO. *Report of the Twenty-First Meeting of Ministers of Health of Countries of the South-East Asia Region, New Delhi, India, 8–9 September 2003*; WHO Regional Office for South-East Asia: New Delhi, India, 2003.
4. Zaki, A.M.; van Boheemen, S.; Bestebroer, T.M.; Osterhaus, A.D.M.E.; Fouchier, R.A.M. Isolation of a Novel Coronavirus from a Man with Pneumonia in Saudi Arabia. *N. Engl. J. Med.* **2012**, *367*, 1814–1820. [[CrossRef](#)] [[PubMed](#)]
5. Petersen, E.; Koopmans, M.; Go, U.; Hamer, D.H.; Petrosillo, N.; Castelli, F.; Storgaard, M.; Al Khalili, S.; Simonsen, L. Comparing SARS-CoV-2 with SARS-CoV and Influenza Pandemics. *Lancet Infect. Dis.* **2020**, *20*, e238–e244. [[CrossRef](#)]
6. WHO. *WHO Coronavirus (COVID-19) Dashboard 2023*. Available online: <https://covid19.who.int/> (accessed on 21 May 2023).
7. Hamre, D.; Procknow, J.J. A New Virus Isolated from the Human Respiratory Tract. *Exp. Biol. Med.* **1966**, *121*, 190–193. [[CrossRef](#)]

8. Farsani, S.M.J.; Dijkman, R.; Jebbink, M.F.; Goossens, H.; Ieven, M.; Deijs, M.; Molenkamp, R.; van der Hoek, L. The First Complete Genome Sequences of Clinical Isolates of Human Coronavirus 229E. *Virus Genes* **2012**, *45*, 433–439. [[CrossRef](#)]
9. Corman, V.M.; Eckerle, I.; Memish, Z.A.; Liljander, A.M.; Dijkman, R.; Jonsdottir, H.; Juma Ngeiywa, K.J.Z.; Kamau, E.; Younan, M.; Al Masri, M.; et al. Link of a Ubiquitous Human Coronavirus to Dromedary Camels. *Proc. Natl. Acad. Sci. USA* **2016**, *113*, 9864–9869. [[CrossRef](#)]
10. Sabir, J.S.M.; Lam, T.T.-Y.; Ahmed, M.M.M.; Li, L.; Shen, Y.; Abo-Aba, S.E.M.; Qureshi, M.I.; Abu-Zeid, M.; Zhang, Y.; Khiyami, M.A.; et al. Co-Circulation of Three Camel Coronavirus Species and Recombination of MERS-CoVs in Saudi Arabia. *Science* **2016**, *351*, 81–84. [[CrossRef](#)]
11. Su, S.; Wong, G.; Shi, W.; Liu, J.; Lai, A.C.K.; Zhou, J.; Liu, W.; Bi, Y.; Gao, G.F. Epidemiology, Genetic Recombination, and Pathogenesis of Coronaviruses. *Trends Microbiol.* **2016**, *24*, 490–502. [[CrossRef](#)]
12. Lee, J.-H.; Jung, Y.; Lee, S.-K.; Kim, J.; Lee, C.-S.; Kim, S.; Lee, J.-S.; Kim, N.-H.; Kim, H.-G. Rapid Biosensor of SARS-CoV-2 Using Specific Monoclonal Antibodies Recognizing Conserved Nucleocapsid Protein Epitopes. *Viruses* **2022**, *14*, 255. [[CrossRef](#)]
13. Wang, Z.; Wang, N.; Yang, L.; Song, X. Bioactive Natural Products in COVID-19 Therapy. *Front. Pharmacol.* **2022**, *13*, 926507. [[CrossRef](#)] [[PubMed](#)]
14. Pokhrel, R.; Chapagain, P.; Siltberg-Liberles, J. Potential RNA-Dependent RNA Polymerase Inhibitors as Prospective Therapeutics against SARS-CoV-2. *J. Med. Microbiol.* **2020**, *69*, 864–873. [[CrossRef](#)] [[PubMed](#)]
15. Aldea, M.; Michot, J.-M.; Danlos, F.-X.; Ribas, A.; Soria, J.-C. Repurposing of Anticancer Drugs Expands Possibilities for Antiviral and Anti-Inflammatory Discovery in COVID-19. *Cancer Discov.* **2021**, *11*, 1336–1344. [[CrossRef](#)] [[PubMed](#)]
16. Wang, Z.; Yang, L. Broad-spectrum Prodrugs with Anti-SARS-CoV-2 Activities: Strategies, Benefits, and Challenges. *J. Med. Virol.* **2022**, *94*, 1373–1390. [[CrossRef](#)]
17. Deb, P.; Molla, M.M.A.; Saif-Ur-Rahman, K.M. An Update to Monoclonal Antibody as Therapeutic Option against COVID-19. *Biosaf. Health* **2021**, *3*, 87–91. [[CrossRef](#)] [[PubMed](#)]
18. Plichta, J.; Kuna, P.; Panek, M. Monoclonal Antibodies as Potential COVID-19 Therapeutic Agents. *COVID* **2022**, *2*, 599–620. [[CrossRef](#)]
19. Hammond, J.; Leister-Tebbe, H.; Gardner, A.; Abreu, P.; Bao, W.; Wisemandle, W.; Baniecki, M.; Hendrick, V.M.; Damle, B.; Simón-Campos, A.; et al. Oral Nirmatrelvir for High-Risk, Nonhospitalized Adults with COVID-19. *N. Engl. J. Med.* **2022**, *386*, 1397–1408. [[CrossRef](#)]
20. Kabinger, F.; Stiller, C.; Schmitzová, J.; Dienemann, C.; Kokic, G.; Hillen, H.S.; Höbartner, C.; Cramer, P. Mechanism of Molnupiravir-Induced SARS-CoV-2 Mutagenesis. *Nat. Struct. Mol. Biol.* **2021**, *28*, 740–746. [[CrossRef](#)]
21. WHO. Solidarity Trial Consortium Remdesivir and Three Other Drugs for Hospitalised Patients with COVID-19: Final Results of the WHO Solidarity Randomised Trial and Updated Meta-Analyses. *Lancet* **2022**, *399*, 1941–1953. [[CrossRef](#)]
22. Newman, D.J.; Cragg, G.M. Natural Products as Sources of New Drugs over the Nearly Four Decades from 01/1981 to 09/2019. *J. Nat. Prod.* **2020**, *83*, 770–803. [[CrossRef](#)]
23. Molyneux, R.J.; Lee, S.T.; Gardner, D.R.; Panter, K.E.; James, L.F. Phytochemicals: The Good, the Bad and the Ugly? *Phytochemistry* **2007**, *68*, 2973–2985. [[CrossRef](#)] [[PubMed](#)]
24. Mani, J.S.; Johnson, J.B.; Steel, J.C.; Broszczak, D.A.; Neilsen, P.M.; Walsh, K.B.; Naiker, M. Natural Product-Derived Phytochemicals as Potential Agents against Coronaviruses: A Review. *Virus Res.* **2020**, *284*, 197989. [[CrossRef](#)] [[PubMed](#)]
25. Elmorsy, M.A.; El-Baz, A.M.; Mohamed, N.H.; Almeer, R.; Abdel-Daim, M.M.; Yahya, G. In Silico Screening of Potent Inhibitors against COVID-19 Key Targets from a Library of FDA-Approved Drugs. *Environ. Sci. Pollut. Res.* **2022**, *29*, 12336–12346. [[CrossRef](#)]
26. Santos, J.; Al-Azzawi, M.; Aronson, J.; Flowers, T.J. eHALOPH a Database of Salt-Tolerant Plants: Helping put Halophytes to Work. *Plant Cell Physiol.* **2016**, *57*, e10. [[CrossRef](#)] [[PubMed](#)]
27. Chapman, V.J. The New Perspective in the Halophytes. *Q. Rev. Biol.* **1942**, *17*, 291–311. [[CrossRef](#)]
28. Cheeseman, J.M. The Evolution of Halophytes, Glycophytes and Crops, and Its Implications for Food Security under Saline Conditions. *New Phytol.* **2015**, *206*, 557–570. [[CrossRef](#)] [[PubMed](#)]
29. Merchaoui, H.; Ksouri, R.; Abdelly, C.; Hanana, M. Halophytes.Tn: An Innovative Database for Tunisian Halophyte Plant Identification, Distribution and Characterization. *Database* **2022**, *2022*, baab082. [[CrossRef](#)]
30. Sahli, R.; Rivière, C.; Neut, C.; Bero, J.; Sahuc, M.-E.; Smaoui, A.; Beaufay, C.; Roumy, V.; Hennebelle, T.; Rouillé, Y.; et al. An Ecological Approach to Discover New Bioactive Extracts and Products: The Case of Extremophile Plants. *J. Pharm. Pharmacol.* **2017**, *69*, 1041–1055. [[CrossRef](#)]
31. Sahuc, M.-E.; Sahli, R.; Rivière, C.; Pène, V.; Lavie, M.; Vandeputte, A.; Brodin, P.; Rosenberg, A.R.; Dubuisson, J.; Ksouri, R.; et al. Dehydrojuncusol, a Natural Phenanthrene Compound Extracted from *Juncus Maritimus*, Is a New Inhibitor of Hepatitis C Virus RNA Replication. *J. Virol.* **2019**, *93*, e02009-18. [[CrossRef](#)]
32. Matsuyama, S.; Nagata, N.; Shirato, K.; Kawase, M.; Takeda, M. Taguchi Efficient Activation of the Severe Acute Respiratory Syndrome Coronavirus Spike Protein by the Transmembrane Protease TMPRSS2. *J. Virol.* **2010**, *84*, 12658–12664. [[CrossRef](#)]
33. Shulla, A.; Heald-Sargent, T.; Subramanya, G.; Zhao, J.; Perlman, S.; Gallagher, T. A Transmembrane Serine Protease Is Linked to the Severe Acute Respiratory Syndrome Coronavirus Receptor and Activates Virus Entry. *J. Virol.* **2011**, *85*, 873–882. [[CrossRef](#)] [[PubMed](#)]

34. Koch, J.; Uckelely, Z.M.; Doldan, P.; Stanifer, M.; Boulant, S.; Lozach, P.-Y. TMPRSS2 Expression Dictates the Entry Route Used by SARS-CoV-2 to Infect Host Cells. *EMBO J.* **2021**, *40*, e107821. [[CrossRef](#)] [[PubMed](#)]
35. Meunier, T.; Desmarests, L.; Bordage, S.; Bamba, M.; Hervouet, K.; Rouillé, Y.; François, N.; Decossas, M.; Sencio, V.; Trottein, F.; et al. A Photoactivable Natural Product with Broad Antiviral Activity against Enveloped Viruses, Including Highly Pathogenic Coronaviruses. *Antimicrob. Agents Chemother.* **2022**, *66*, e01581-21. [[CrossRef](#)] [[PubMed](#)]
36. El-Shamy, A.I.; Abdel-Razek, A.F.; Nassar, M.I. Phytochemical Review of *Juncus* L. Genus (Fam. Juncaceae). *Arab. J. Chem.* **2015**, *8*, 614–623. [[CrossRef](#)]
37. Behery, F.A.A.; Naeem, Z.-E.M.; Maatooq, G.T.; Amer, M.M.A.; Ahmed, A.F. A Novel Antioxidant Phenanthrenoid Dimer from *Juncus acutus* L. *Nat. Prod. Res.* **2013**, *27*, 155–163. [[CrossRef](#)]
38. Moustafa, S.; El-Alfy, T.; Hasan, N.; Abou El-Seoud, K. Inhibitory Effect of Flavonoids Isolated from Some *Juncus* Species (Flowers & Callus) on Blood Platelets Aggregation. *Bull. Pharm. Sci. Assiut* **2002**, *25*, 43–52. [[CrossRef](#)]
39. Bús, C.; Tóth, B.; Stefkó, D.; Hohmann, J.; Vasas, A. Family Juncaceae: Promising Source of Biologically Active Natural Phenanthrenes. *Phytochem. Rev.* **2018**, *17*, 833–851. [[CrossRef](#)]
40. Kovács, A.; Vasas, A.; Hohmann, J. Natural Phenanthrenes and Their Biological Activity. *Phytochemistry* **2008**, *69*, 1084–1110. [[CrossRef](#)]
41. Murgolo, N.; Therien, A.G.; Howell, B.; Klein, D.; Koeplinger, K.; Lieberman, L.A.; Adam, G.C.; Flynn, J.; McKenna, P.; Swaminathan, G.; et al. SARS-CoV-2 Tropism, Entry, Replication, and Propagation: Considerations for Drug Discovery and Development. *PLoS Pathog.* **2021**, *17*, e1009225. [[CrossRef](#)]
42. Chassagne, F.; Samarakoon, T.; Porras, G.; Lyles, J.T.; Dettweiler, M.; Marquez, L.; Salam, A.M.; Shabih, S.; Farrokhi, D.R.; Quave, C.L. A Systematic Review of Plants with Antibacterial Activities: A Taxonomic and Phylogenetic Perspective. *Front. Pharmacol.* **2021**, *11*, 586548. [[CrossRef](#)]
43. Vassilara, F.; Spyridaki, A.; Pothitos, G.; Deliveliotou, A.; Papadopoulos, A. A Rare Case of Human Coronavirus 229E Associated with Acute Respiratory Distress Syndrome in a Healthy Adult. *Case Rep. Infect. Dis.* **2018**, *2018*, 6796839. [[CrossRef](#)] [[PubMed](#)]
44. Ishiuchi, K.; Kosuge, Y.; Hamagami, H.; Ozaki, M.; Ishige, K.; Ito, Y.; Kitanaka, S. Chemical Constituents Isolated from *Juncus effusus* Induce Cytotoxicity in HT22 Cells. *J. Nat. Med.* **2015**, *69*, 421–426. [[CrossRef](#)] [[PubMed](#)]
45. Williams, C.A.; Harborne, J.B. Luteolin and Daphnetin Derivatives in the Juncaceae and Their Systematic Significance. *Biochem. Syst. Ecol.* **1975**, *3*, 181–190. [[CrossRef](#)]
46. Lin, Y.; Shi, R.; Wang, X.; Shen, H.-M. Luteolin, a Flavonoid with Potential for Cancer Prevention and Therapy. *Curr. Cancer Drug Targets* **2008**, *8*, 634–646. [[CrossRef](#)]
47. López-Lázaro, M. Distribution and Biological Activities of the Flavonoid Luteolin. *Mini Rev. Med. Chem.* **2009**, *9*, 31–59. [[CrossRef](#)]
48. Wang, S.; Ling, Y.; Yao, Y.; Zheng, G.; Chen, W. Luteolin Inhibits Respiratory Syncytial Virus Replication by Regulating the MiR-155/SOCS1/STAT1 Signaling Pathway. *Virology* **2020**, *17*, 187. [[CrossRef](#)]
49. Yan, H.; Ma, L.; Wang, H.; Wu, S.; Huang, H.; Gu, Z.; Jiang, J.; Li, Y. Luteolin Decreases the Yield of Influenza A Virus in Vitro by Interfering with the Coat Protein I Complex Expression. *J. Nat. Med.* **2019**, *73*, 487–496. [[CrossRef](#)]
50. Yi, L.; Li, Z.; Yuan, K.; Qu, X.; Chen, J.; Wang, G.; Zhang, H.; Luo, H.; Zhu, L.; Jiang, P.; et al. Small Molecules Blocking the Entry of Severe Acute Respiratory Syndrome Coronavirus into Host Cells. *J. Virol.* **2004**, *78*, 11334–11339. [[CrossRef](#)]
51. Manvar, D.; Mishra, M.; Kumar, S.; Pandey, V.N. Identification and Evaluation of Anti Hepatitis C Virus Phytochemicals from *Eclipta alba*. *J. Ethnopharmacol.* **2012**, *144*, 545–554. [[CrossRef](#)]
52. Bai, L.; Nong, Y.; Shi, Y.; Liu, M.; Yan, L.; Shang, J.; Huang, F.; Lin, Y.; Tang, H. Luteolin Inhibits Hepatitis B Virus Replication through Extracellular Signal-Regulated Kinase-Mediated Down-Regulation of Hepatocyte Nuclear Factor 4 α Expression. *Mol. Pharm.* **2016**, *13*, 568–577. [[CrossRef](#)]
53. Fan, W.; Qian, S.; Qian, P.; Li, X. Antiviral Activity of Luteolin against Japanese Encephalitis Virus. *Virus Res.* **2016**, *220*, 112–116. [[CrossRef](#)]
54. Mehla, R.; Bivalkar-Mehla, S.; Chauhan, A. A Flavonoid, Luteolin, Cripples HIV-1 by Abrogation of Tat Function. *PLoS ONE* **2011**, *6*, e27915. [[CrossRef](#)] [[PubMed](#)]
55. Xu, L.; Su, W.; Jin, J.; Chen, J.; Li, X.; Zhang, X.; Sun, M.; Sun, S.; Fan, P.; An, D.; et al. Identification of Luteolin as Enterovirus 71 and Coxsackievirus A16 Inhibitors through Reporter Viruses and Cell Viability-Based Screening. *Viruses* **2014**, *6*, 2778–2795. [[CrossRef](#)] [[PubMed](#)]
56. Alvarado, W.; Perez-Lemus, G.R.; Menéndez, C.A.; Byléhn, F.; De Pablo, J.J. Molecular Characterization of COVID-19 Therapeutics: Luteolin as an Allosteric Modulator of the Spike Protein of SARS-CoV-2. *Mol. Syst. Des. Eng.* **2022**, *7*, 58–66. [[CrossRef](#)]
57. Shawan, M.M.A.K.; Halder, S.K.; Hasan, M.d.A. Luteolin and Abyssinone II as Potential Inhibitors of SARS-CoV-2: An in Silico Molecular Modeling Approach in Battling the COVID-19 Outbreak. *Bull. Natl. Res. Cent.* **2021**, *45*, 27. [[CrossRef](#)]
58. Munafò, F.; Donati, E.; Brindani, N.; Ottonello, G.; Armirotti, A.; De Vivo, M. Quercetin and Luteolin Are Single-Digit Micromolar Inhibitors of the SARS-CoV-2 RNA-Dependent RNA Polymerase. *Sci. Rep.* **2022**, *12*, 10571. [[CrossRef](#)]
59. Sacan, A.; Ekins, S.; Kortagere, S. Applications and Limitations of In Silico Models in Drug Discovery. In *Bioinformatics and Drug Discovery*; Larson, R.S., Ed.; Methods in Molecular Biology; Humana Press: Totowa, NJ, USA, 2012; Volume 910, pp. 87–124, ISBN 978-1-61779-964-8.
60. Yasuda, M.T.; Fujita, K.; Hosoya, T.; Imai, S.; Shimoi, K. Absorption and Metabolism of Luteolin and Its Glycosides from the Extract of *Chrysanthemum Morifolium* Flowers in Rats and Caco-2 Cells. *J. Agric. Food Chem.* **2015**, *63*, 7693–7699. [[CrossRef](#)]

61. Ali, F.; Siddique, Y.H. Bioavailability and Pharmaco-Therapeutic Potential of Luteolin in Overcoming Alzheimer's Disease. *CNS Neurol. Disord. Drug Targets* **2019**, *18*, 352–365. [[CrossRef](#)]
62. Joel Mjiqiza, S.; Abraham Syce, J.; Chibuzo Obikeze, K. Pulmonary Effects and Disposition of Luteolin and *Artemisia Afra* Extracts in Isolated Perfused Lungs. *J. Ethnopharmacol.* **2013**, *149*, 648–655. [[CrossRef](#)]
63. D'Ascanio, L.; Vitelli, F.; Cingolani, C.; Maranzano, M.; Brenner, M.J.; Di Stadio, A. Randomized Clinical Trial "Olfactory Dysfunction after COVID-19: Olfactory Rehabilitation Therapy vs. Intervention Treatment with Palmitoylethanolamide and Luteolin": Preliminary Results. *Eur. Rev. Med. Pharmacol. Sci.* **2021**, *25*, 4156–4162. [[CrossRef](#)]
64. Aziz, N.; Kim, M.-Y.; Cho, J.Y. Anti-Inflammatory Effects of Luteolin: A Review of in Vitro, in Vivo, and in Silico Studies. *J. Ethnopharmacol.* **2018**, *225*, 342–358. [[CrossRef](#)] [[PubMed](#)]
65. van den Worm, S.H.E.; Eriksson, K.K.; Zevenhoven, J.C.; Weber, F.; Züst, R.; Kuri, T.; Dijkman, R.; Chang, G.; Siddell, S.G.; Snijder, E.J.; et al. Reverse Genetics of SARS-Related Coronavirus Using Vaccinia Virus-Based Recombination. *PLoS ONE* **2012**, *7*, e32857. [[CrossRef](#)]
66. Desmarets, L.; Callens, N.; Hoffmann, E.; Danneels, A.; Lavie, M.; Couturier, C.; Dubuisson, J.; Belouzard, S.; Rouillé, Y. A Reporter Cell Line for the Automated Quantification of SARS-CoV-2 Infection in Living Cells. *Front. Microbiol.* **2022**, *13*, 1031204. [[CrossRef](#)] [[PubMed](#)]
67. Yang, L.; Wang, Z. Natural Products, Alone or in Combination with FDA-Approved Drugs, to Treat COVID-19 and Lung Cancer. *Biomedicines* **2021**, *9*, 689. [[CrossRef](#)] [[PubMed](#)]

Disclaimer/Publisher's Note: The statements, opinions and data contained in all publications are solely those of the individual author(s) and contributor(s) and not of MDPI and/or the editor(s). MDPI and/or the editor(s) disclaim responsibility for any injury to people or property resulting from any ideas, methods, instructions or products referred to in the content.