



HAL
open science

A unitary model of auditory frequency change perception

Kai Siedenburg, Jackson Graves, Daniel Pressnitzer

► **To cite this version:**

Kai Siedenburg, Jackson Graves, Daniel Pressnitzer. A unitary model of auditory frequency change perception. PLoS Computational Biology, 2023, 19 (1), pp.e1010307. <10.1371/journal.pcbi.1010307>. <hal-04235822>

HAL Id: hal-04235822

<https://hal.science/hal-04235822v1>

Submitted on 27 Nov 2023

HAL is a multi-disciplinary open access archive for the deposit and dissemination of scientific research documents, whether they are published or not. The documents may come from teaching and research institutions in France or abroad, or from public or private research centers.

L'archive ouverte pluridisciplinaire **HAL**, est destinée au dépôt et à la diffusion de documents scientifiques de niveau recherche, publiés ou non, émanant des établissements d'enseignement et de recherche français ou étrangers, des laboratoires publics ou privés.



HAL Authorization

RESEARCH ARTICLE

A unitary model of auditory frequency change perception

Kai Siedenburg^{1*}, Jackson Graves², Daniel Pressnitzer²

1 Carl von Ossietzky University of Oldenburg, Dept. of Medical Physics and Acoustics, Oldenburg, Germany, **2** Laboratoire des systèmes perceptifs, Dépt. d'études cognitives, École normale supérieure, PSL University, CNRS, Paris, France

* kai.siedenburg@uol.de

Abstract

Changes in the frequency content of sounds over time are arguably the most basic form of information about the behavior of sound-emitting objects. In perceptual studies, such changes have mostly been investigated separately, as aspects of either pitch or timbre. Here, we propose a unitary account of “up” and “down” subjective judgments of frequency change, based on a model combining auditory correlates of acoustic cues in a sound-specific and listener-specific manner. To do so, we introduce a generalized version of so-called Shepard tones, allowing symmetric manipulations of spectral information on a fine scale, usually associated to pitch (spectral fine structure, SFS), and on a coarse scale, usually associated timbre (spectral envelope, SE). In a series of behavioral experiments, listeners reported “up” or “down” shifts across pairs of generalized Shepard tones that differed in SFS, in SE, or in both. We observed the classic properties of Shepard tones for either SFS or SE shifts: subjective judgements followed the smallest log-frequency change direction, with cases of ambiguity and circularity. Interestingly, when both SFS and SE changes were applied concurrently (synergistically or antagonistically), we observed a trade-off between cues. Listeners were encouraged to report when they perceived “both” directions of change concurrently, but this rarely happened, suggesting a unitary percept. A computational model could accurately fit the behavioral data by combining different cues reflecting frequency changes after auditory filtering. The model revealed that cue weighting depended on the nature of the sound. When presented with harmonic sounds, listeners put more weight on SFS-related cues, whereas inharmonic sounds led to more weight on SE-related cues. Moreover, these stimulus-based factors were modulated by inter-individual differences, revealing variability across listeners in the detailed recipe for “up” and “down” judgments. We argue that frequency changes are tracked perceptually via the adaptive combination of a diverse set of cues, in a manner that is in fact similar to the derivation of other basic auditory dimensions such as spatial location.

OPEN ACCESS

Citation: Siedenburg K, Graves J, Pressnitzer D (2023) A unitary model of auditory frequency change perception. *PLoS Comput Biol* 19(1): e1010307. <https://doi.org/10.1371/journal.pcbi.1010307>

Editor: Emili Balaguer-Ballester, Bournemouth University, UNITED KINGDOM

Received: June 16, 2022

Accepted: January 4, 2023

Published: January 12, 2023

Copyright: © 2023 Siedenburg et al. This is an open access article distributed under the terms of the [Creative Commons Attribution License](https://creativecommons.org/licenses/by/4.0/), which permits unrestricted use, distribution, and reproduction in any medium, provided the original author and source are credited.

Data Availability Statement: All data, statistical analyses, and modeling code are available under https://github.com/Music-Perception-and-Processing/frequency_change.

Funding: KS was supported by a Freigeist Fellowship of the Volkswagen Foundation. KS was also funded by the Deutsche Forschungsgemeinschaft (DFG, German Research Foundation) – Project ID 352015383 – SFB 1330 A6. DP and JG were supported by the Agence Nationale de la Recherche (ANR), grants ANR-17-EURE-0017 and ANR-19-CE28-0019-01. DP was

further supported by ANR grant ANR-22-CE28-0023-01. The funders had no role in study design, data collection and analysis, decision to publish, or preparation of the manuscript.

Competing interests: The authors have declared that no competing interests exist.

Author summary

As we speak or play music, the sounds we produce change their frequency content over time. Perceiving such frequency changes is crucial to e.g. differentiating vowels and understanding prosody in speech, or following melodies in music. Traditionally, such frequency changes have been described as perceptual changes in “pitch” or “timbre”, with some contradictory experimental findings as to the independence between such dimensions. Here, we study frequency change perception by generalizing a classic auditory stimulus, the so-called Shepard tones, in order to concurrently manipulate acoustic cues to pitch and timbre in fully symmetric and parametric manner. Our main conclusion is that listeners use a compound perceptual dimension to achieve the ecological task of tracking frequency-change across sounds. Interestingly, this dimension can be modeled as an adaptive combination of acoustic cues, weighted according to task demands and listener-specific biases. In addition to suggesting a resolution for discrepancies in the pitch literature, our model reveals basic analogies between the seemingly mysterious concepts of “pitch” and “timbre” and other perceptual dimensions, such as auditory space, which have long been known to be derived from cue combination.

Introduction

One of the most fundamental tasks of the auditory system is to track changes across sounds as they form sequences over time. For instance, in speech, the “ups” and “downs” of prosody carry information about emotion, about whether a sentence is affirmative or interrogative, or even about the meaning of words in tonal languages [1]. In music, the “ups” and “downs” of melodies constitute the major structural factor for most musical idioms around the world [2]. Both prosody and melody are traditionally described as perceptual “pitch” patterns, isomorphic to changes in the acoustic periodicity of sounds. However, in spite of centuries of intense scrutiny, the precise nature of the auditory cues determining pitch in the general case has remained elusive, with many additional candidates beyond periodicity [3–5]. Moreover, in the perceptual domain, the independence of pitch from other perceptual attributes such as timbre has been recently challenged [6–10]. Here, we explore a unifying hypothesis, suggesting that a salient perceptual dimension on which sounds can be ordered from “low” to “high” is in fact a compound construct, seamlessly derived by listeners from the combination of distinct auditory cues, each adaptively weighted in a manner that can be sound-dependent and listener-specific.

In the following experiments and modeling, we investigated two main types of acoustic cues: spectral fine-structure cues (SFS) and spectral envelope cues (SE). Such a dichotomy is in part motivated by the standard source-filter model of sound production [11, 12], whereby an excitatory source generates a signal which is then filtered by resonant bodies. For the voice, the source would be vocal cords and the filter the vocal tract. For a musical instrument such as the violin, the source would be strings and the filter the body of the violin. There is an approximate mapping between source and SFS on the one hand, and filter and SE on the other hand. Sources constrain SFS, for instance for periodical excitatory motion that produce harmonically-related frequency components with frequencies at multiples of a fundamental frequency (f_0). In contrast, filters constrain SE, through resonances that shape the global amplitude profile of the frequency spectrum. Our choice of SFS and SE is also motivated by perceptual considerations. Harmonicity in SFS, equivalent to periodicity, has long been associated to pitch, and may also explain the pitch of inharmonic sounds [13]. SE cues are thought to affect timbre and source recognition [14, 15]. In particular, the balance of low vs. high energy imposed by

SE is associated to a timbre dimension termed brightness [16, 17]. However, as we will now briefly review, there is also a growing amount of evidence that SFS and SE interact for pitch perception, and that the distinction between pitch and brightness may not be as clear-cut as initially thought.

An often-quoted definition of pitch was formalized by the American National Standards Institute (ANSI): “That attribute of auditory sensation in terms of which sounds may be ordered on a scale extending from low to high.” [18] The full ANSI definition continues by stating that: “Pitch depends mainly on the frequency content of the sound stimulus, but it also depends on the sound pressure and the waveform of the stimulus”. A parallel ANSI definition exists for timbre: “That attribute of auditory sensation which enables a listener to judge that two nonidentical sounds, similarly presented and having the same loudness and pitch, are dissimilar. NOTE-Timbre depends primarily upon the frequency spectrum, although it also depends upon the sound pressure and the temporal characteristics of the sound.” [18] It is noticeable that, by stating that pitch or timbre basically depend on the waveform of a sound, these definitions could accommodate each and every acoustic feature as a determinant of perception. There is also a clear overlap between the two definitions. Perhaps as a result, reviews of the pitch and timbre literature have repeatedly pointed to their limited utility [19, 20]. One of the goals of the present work is to provide a modeling framework based on the theoretically grounded idea of optimal cue combination [21, 22] to formally quantify the contribution of acoustic and auditory cues to the perception of frequency changes, whether cast as pitch or timbre.

The idea that a pitch scale may be constructed from multiple cues is not new and predates even the ANSI definition cited above. For harmonic sounds, for instance, Bachem [23] introduced the now classic distinction between “pitch chroma”, a circular dimension repeating at the octave, and “pitch height”, a linear dimension following absolute frequency (see also [13, 24]). Pitch has been further qualified, with notions of “virtual pitch”, “spectral pitch”, “melodic pitch” introduced for various combinations of SFS and SE cues [25–27]. For inharmonic sounds, recent results by McPherson and McDermott add yet additional candidate cues to try and explain pitch judgements [28]. Using a variety of tasks usually understood as involving pitch, such as pitch discrimination, melodic contour identification, or interval judgments, the authors concluded that pitch judgements were in fact based on multiple mechanisms operating concurrently, such as the computation of f_0 from SFS cues for harmonic sounds, and the tracking of SE cues for inharmonic and harmonic sounds (see also [29]). Previously, frequency-shift detectors tracking local changes in SFS cues had also been evidenced [30], providing yet another mechanism contributing to “up” or “down” pitch judgements available for harmonic and inharmonic sounds alike [31]. Surprisingly, in spite of this history of experimental and theoretical arguments, there is currently no model implementing the straight-forward idea of cue combination in a quantitative computational framework.

Another line of evidence further suggesting that pitch judgments may be based on more than one type of acoustic cue is found in studies where SFS and SE cues were combined in an antagonistic manner. The experimental findings using such paradigms appear contradictory so far. Small simultaneous SFS and SE changes can be processed largely independently by some listeners at least [32, 33] while timbre judgments involving SE are largely unaffected by changes in SFS [34]. However, it is also the case that SFS and SE cues interfere in discrimination experiments with adult listeners, such that simultaneous variation in timbral brightness impairs pitch discrimination, and vice versa [8, 35–38]. Interestingly, there exist recent reports of 3 and 7 month infants being “immune” to the interaction of SFS and SE [39], suggesting a role for long-term auditory learning in the interaction [40, 41]. One ecological interpretation for such a learnt interaction between SFS and SE may be the actual coupling of f_0 and SE

observed for natural sounds, underlining limitations of the classical source-filter physical model [42].

Finally, an intriguing synergy between SFS and SE cues has been revealed through the crossmodal correspondence of auditory pitch with the spatial dimension of height. Empirically, it has been shown that “high” pitches are spontaneously associated with high spatial elevation [43, 44]. However, while the association is strong in Western musicians and parallels the way Western musical notation represents pitch, recent work suggests that listeners without musical training only exhibit such spatial association effects for frequency changes consisting of coupled SFS and SE shifts, but not for one-dimensional shifts alone [6].

We now turn to the distinction that is conventionally made between pitch and timbre, and especially timbral brightness. An intuitive definition of pitch, in addition to the “low” to “high” scale, is that it is “that attribute of sounds of which melodies are made” [26, 45]. However, pitch may not be the only perceptual dimension with which melodies can be made of. A number of studies have now revealed strong and unexpected commonalities between the perception of SFS and SE in sequences akin to melodies. These include the recognition of familiar tunes based on brightness alone [46] or the accurate discrimination of melodic patterns for both pitch and brightness [31, 47, 48]. These commonalities stand in sharp contrast with the qualitative differences observed between e.g. pitch and loudness sequences [49, 50]. Furthermore, even though melodies are only conceived in terms of pitch changes for Western tonal music, musical idioms outside of Western culture do use “melodies” made out of timbral changes, such as throat singing or jaw’s harp in East Asia, or the musical bow in Africa [51]. In all of these musical techniques, a fixed SFS is being modulated by changes in SE, incompatible with the traditional Western musical definition of melody. These observations cast further doubt on the long-held but perhaps arbitrary distinction made between pitch and brightness as separate perceptual correlates of sound sequences with dynamically-changing frequency content.

In the present study, we introduce a generalized version of Shepard tones [52] to further address the role of SFS and SE cues on judgements of frequency change on a “low” to “high” scale. Shepard tones were originally designed to tear apart the contributions of chroma and pitch height cues to pitch perception [24, 52–54]. They consist of octave-spaced pure tone components, defining chroma, with a fixed bell-shaped spectral envelope, defining height. A sequence of Shepard tones with increasing chroma is cyclic, as a full octave shift is acoustically identical to no shift at all. Such sequences give rise to the famous Shepard scale illusion, that is, a sequence of tones with seemingly continually ascending or descending pitch. Shepard tones were also found to produce ambiguous frequency shift judgements for half-octave shifts. Typically, listeners’ responses were split between upward and downward shifts for the same sound in this so-called tritone paradox [52, 54]. Finally, the pitch percept associated to ambiguous shifts between Shepard tones can be strongly biased by preceding context [55, 56]. In the original Shepard tones, only SFS is manipulated, while SE is kept constant. Interestingly, exactly analogous findings for all of these observations were recently reported using SE changes instead of SFS changes. Sounds were designed to have local SE shifts combined with a fixed, harmonic SFS. This produced a Shepard scale illusion, a tritone paradox, and context effects for SE cues [48].

The further generalization of Shepard tones we introduce here aims at independently manipulating SFS and SE cues, in a symmetric manner and with the same cyclic topology, both for harmonic and inharmonic sounds (Fig 1). We used the trick of even-to-odd harmonic attenuation [57, 58] to obtain a circular SFS dimension with harmonic sounds. These tones were coupled with an SE that was quasi-periodic along the frequency axis [48]. Combining the resulting octave-circular SFS and octave-circular SE dimensions meant that the two

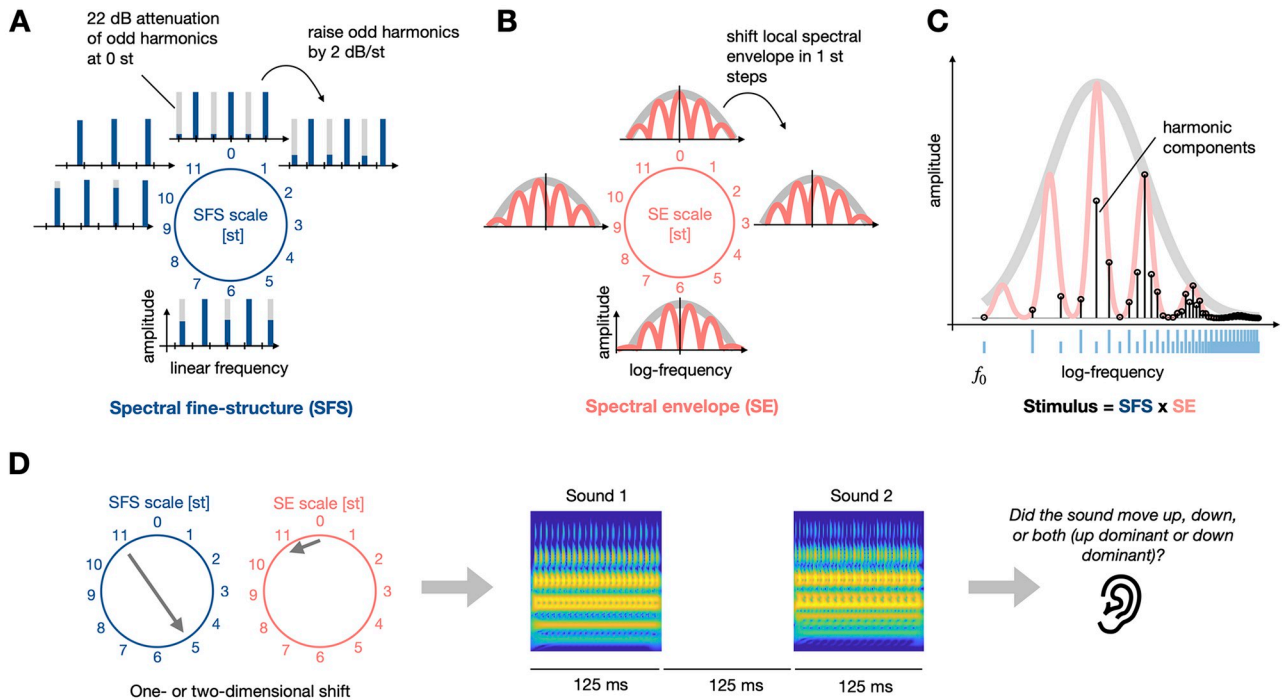


Fig 1. Stimulus schematic for the generalized Shepard tones used in Exp. 1 and 2. (A) Spectral fine structure (SFS, blue) is illustrated here as a set of harmonic components at integer multiples of a fundamental frequency f_0 . SFS could be shifted in 1-semitone (st) steps, while manipulating the amplitude of odd harmonics at each step to induce perceptual circularity across a 12-st shift. Inharmonic stimuli were created by jittering the individual frequency components around their nominal values. (B) Spectral envelope (SE, red) had peaks at octave-related frequencies superimposed with a fixed bell-shaped envelope. SE could also be shifted in st steps and displayed exact acoustic circularity across a 12-st shift. (C) Example stimulus for a given combination of SFS and SE. Frequency components are constrained by the SE (red line) and follow the harmonic series of the SFS and its even-odd attenuation (indicated by blue lines). The resulting amplitude of the actual stimulus components is shown by black lines. Note that some components are lower than their nominal SE amplitude, because of the even/odd attenuation. (D) Schematic depiction of example trial with two-dimensional shift of 6 st in the SFS dimension and 11 st in the SE dimension. After each trial, participants were asked to judge whether the sound pair moved up, down, both (up dominant), or both (down dominant). Stimuli for Exp. 3 were generated in a similar manner except that the SFS was not harmonic, but with fixed distance on a log-frequency scale, allowing for exact acoustic circularity for a shift corresponding to their log-frequency distance.

<https://doi.org/10.1371/journal.pcbi.1010307.g001>

dimensions were intrinsically comparable with regards to the size of shifts along each dimension. Furthermore, even though SFS and SE cues overlap in the general case, especially for lower-rand harmonics, in our stimuli they could be distinguished in terms of spectral granularity because the global spectral envelope removed the lower part of the stimuli. As a result, the amplitude of the f_0 component was negligible (see Fig 1) and the maximum separation between individual harmonics (i.e., SFS cues) was a perfect fifth interval, whereas SE maxima were separated by one octave. Finally, by jittering the frequency position of partial tones [28], stimuli could also be made inharmonic.

The data collection was split into different experiments, each consisting of various stimulus conditions. The experiments were run as several experimental sessions on different days, with partial overlap of participants (see Methods for details). Experiment 1 tested whether these generalized Shepard tones yielded classic Shepard properties. Participants were asked to report “up” or “down” shifts across pairs of tones. Such subjective changes were described to participants as either changes in pitch or brightness, to test our core hypothesis that, irrespective of semantic labels, consistent “up” or “down” judgments could be made irrespective of the cue manipulated. Experiment 2 tested interference between SFS and SE shifts presented concurrently, in a synergistic or antagonistic manner, for harmonic and inharmonic tones.

Importantly, to test whether two explicit perceptual dimensions were simply competing during the judgements, participants had the opportunity to report whether they perceived “both” directions of change concurrently. This rarely happened. Experiment 3 tested whether the observed effects generalized to an SFS with a different spacing of partial tones. Finally, to provide a synthetic interpretation of the rich but complex behavioral dataset and quantify the auditory cues compatible with the observed perceptual data, we used a computational model combining both SFS-related and SE-related cues. Fitting the model to each listener in each condition revealed common stimulus-based factors as well as inter-individual effects, characterizing the recipe for “up” vs. “down” judgments in a novel degree of detail. Overall, we suggest that auditory frequency change perception is based on an adaptive combination of a diverse set of cues.

Results

One-dimensional shifts of harmonic and inharmonic sounds

In Exp. 1, we tested the perception of one-dimensional SFS or SE shifts for generalized Shepard tones as described in Fig 1. Pairs of sounds to be compared perceptually were presented on each trial, with shifts of SFS or SE between 1 and 11 semitones (st) introduced across the two sounds of the pair. Because of the design of the stimuli, a shift of 12 st is equivalent to no shift at all, so all possible shift values were effectively sampled at a 1 st resolution. In addition, harmonic and inharmonic SFS were both tested. Inharmonic SFS was obtained by jittering the nominal frequency values of individual frequency components of the harmonic SFS case of up to $\pm 50\%$ of the frequency of f_0 according to a uniform distribution, while keeping the jitter values fixed across the two sounds within a trial. Blocks of trials were constructed for each stimulus condition (SFS harmonic, SFS inharmonic, SE harmonic, SE inharmonic) and all shift values were randomly presented within a block. Listeners were asked to report whether they heard the sound pair moving “up” or “down”, with the instructions specifying that the changes could be characterized as either pitch or brightness.

Results are shown in Fig 2. As expected, we obtained a general trend of increasing “down” responses as a function of shift size in all cases. In most cases, the increase was monotonic, with the most notable exception being the inharmonic SFS shifts. In the latter condition, we observed an increase of the proportion of “down” responses up to 6 st, followed by an unexpected u-shaped pattern of scores from 6 to 11 st. For SE shifts, there was also a tendency to

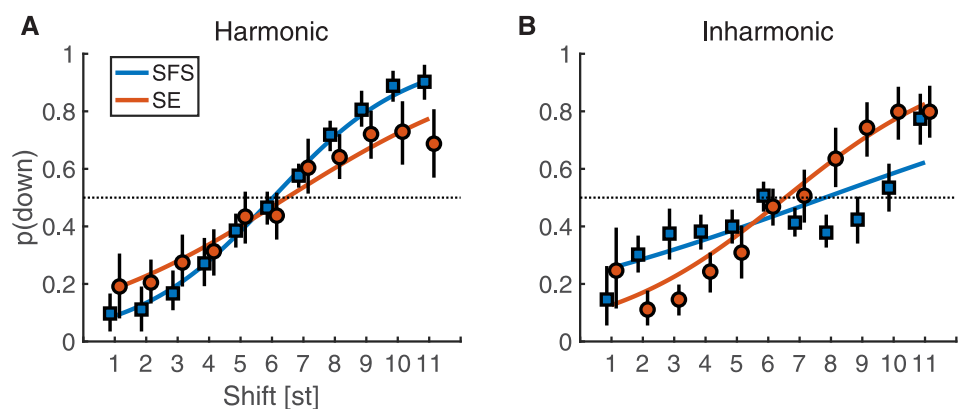


Fig 2. Proportion “down” responses for one-dimensional shifts of Exp. 1 for harmonic (A) and inharmonic (B) Shepard sounds. Colored lines correspond to the fitted GLME model. Black vertical lines indicate 95% confidence intervals across participants obtained by bootstrapping.

<https://doi.org/10.1371/journal.pcbi.1010307.g002>

plateau or even reverse the general trend for extreme shifts smaller than 2 st or larger than 10 st. For these shifts, the increasing width of error bars for SE shifts also indicates less agreement among participants. In all cases, however, the results displayed a hallmark feature of Shepard tones: shifts of 6 st yielded ambiguous responses (around 50% “down”, 50% “up”), thus providing a first indication that our generalization of Shepard tones to SFS and SE shifts, harmonic or inharmonic, was successful.

The raw data were fitted by a general linear mixed-effects (GLME) model, corresponding to a logistic regression approach with by-participant and by-item intercepts. The shift size factor was coded as numerical variable and all categorical variables were effects coded (see [Methods](#) and supplementary Table A in [S1 Text](#) for details). The colored lines in [Fig 2](#) correspond to the fixed-effects predictions of the GLME model. Specifically, the model did not indicate a main effect of shift type, SFS vs. SE ($\beta = 0.01 [-0.08, 0.1]$, $p = .87$) but confirmed a clear effect of shift size ($\beta = 0.31 [0.30, 0.32]$, $p < .001$). Further, the GLME confirmed interactions between harmonicity and shift type ($\beta = -0.52 [-0.61, -0.43]$, $p < .001$), harmonicity and shift size ($\beta = 0.06 [0.04, 0.07]$, $p < .001$), as well as harmonicity, type, and size ($\beta = 0.1 [0.08, 0.11]$, $p < .001$). The latter interaction corresponded to the shallower slopes for SE shifts compared to SFS shifts for harmonic sounds and the reversal of that pattern for inharmonic sounds. This three-way interaction indicated that harmonicity mediated the strength of the shift percept for one-dimensional SFS and SE shifts: SFS shifts were more clearly discernible for harmonic sounds whereas SE shifts became clearer for inharmonic sounds.

Two-dimensional shifts of harmonic and inharmonic sounds

In Exp. 2, we set out to explore the perception of two-dimensional shifts with SFS and SE combined, and sometimes pitted against each other. In this experiment, shifts were concurrently introduced in both SFS and SE, with independent shift values for SFS and SE. We sampled three shift values for each type of cue: 1, 6, and 11 st, providing nine different 2D combinations of shifts for either harmonic SFS or inharmonic SFS. Importantly, on each trial, listeners were allowed to report whether they perceived both directions of change concurrently. Four response options were thus provided: “up”, “both (up dominant)”, “both (down dominant)”, and “down”. If listeners explicitly weighed pitch and brightness judgements to provide their response, then a large proportion of “both” responses should be observed when SFS and SE shifts were in opposite directions. Conversely, if they simply used a perceptual “low” to “high” scale by implicitly combining SFS and SE cues on a unitary perceptual dimension, little or no “both” responses should be observed. Results showed that “both” responses were not clustered around the antagonistic 1/11 and 11/1 shifts but rather distributed across conditions. In fact, “both” responses were only observed for a relatively small fraction of the trials (on average 8 and 14 percent of overall responses for synergistic and antagonistic trials with harmonic sounds, respectively; and 10 and 19 percent of responses for synergistic and antagonistic trials with inharmonic sounds; see supplementary Fig A in [S1 Text](#)). For comparison with Exp. 1, responses were thus aggregated as either “up” (“up” together with “both (up dominant)”) or “down” (“down” together with “both (down dominant)”). The resulting patterns of response are shown in [Fig 3](#). Visual inspection of this [Fig 3](#) suggests that the effect of SE shifts was smaller than the effect of SFS shifts for harmonic sounds, but SFS and SE shifts had similar effects for inharmonic sounds. Interestingly, shifts of 6 st along the SE dimension (shift “SE6”) appeared to yield a reduced effect of SFS for harmonic sounds and a complete lack of an effect for inharmonic sounds ([Fig 3B](#)). Furthermore, incongruent SFS and SE shifts appeared to exactly cancel out for inharmonic sounds, with SFS1-SE11 and SFS11-SE1 shifts producing around 50% “down” responses.

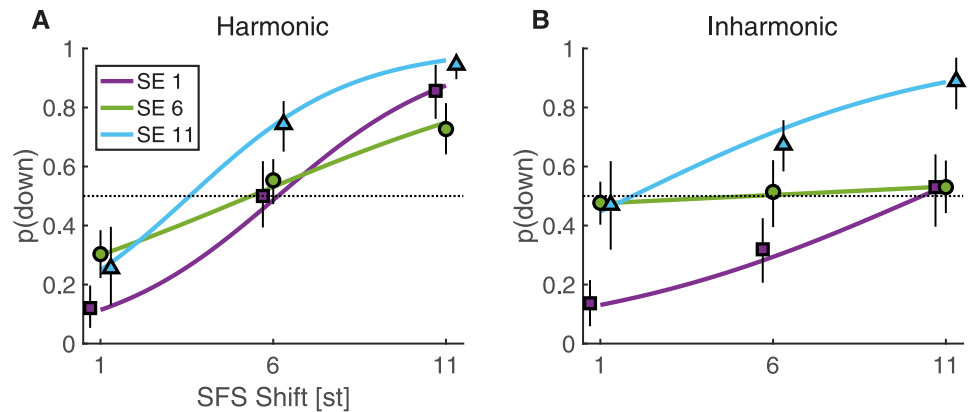


Fig 3. Proportion “down” responses for two-dimensional shifts of Exp. 2 for harmonic (A) and inharmonic (B) Shepard sounds. Colored lines indicate the fixed effects of the GLME model. Black vertical lines indicate 95% confidence intervals obtained by bootstrapping.

<https://doi.org/10.1371/journal.pcbi.1010307.g003>

A similar GLME model as in Exp. 1 was fitted to the data (see equations in Table B in [S1 Text](#)). The model suggested that listeners tended to perceive harmonic sound pairs more frequently as moving “down” compared to inharmonic shifts ($\beta = -0.39$ [$-0.49, -0.3$], $p < .001$). There were strong main effects of SFS ($\beta = 0.25$, [$0.23, 0.26$], $p < .001$) and SE ($\beta > 0.7$, [$0.57, 0.83$], $p < .001$), the latter parametrized by the two factors SE1/11 and SE6/11 that used effects coding to contrast shifts SE1 and SE6 with SE11, respectively. Different types of regressors were used for SFS and SE variables in order to account for the interactions of SFS and SE factors with different slopes of SFS for the SE6 level compared to the other SE levels (see [Fig 3](#) and next paragraph for an alternative model). Importantly, the effects of SFS shifts were markedly greater for harmonic sounds compared to inharmonic sounds as indicated by a harmonicity-SFS interaction ($\beta = 0.09$ [$0.08, 0.11$], $p < .001$). To the contrary, the difference between the SE1 and SE11 shifts were enhanced for inharmonic sounds as indicated by a harmonicity-SE1/11 interaction ($\beta = 0.22$ [$0.07, 0.37$], $p = .004$). Further, the SFS factor interacted with both the SE1/11 factor ($\beta = 0.06$ [$0.03, 0.08$], $p < .001$) and the SE6/11 factor ($\beta = -0.14$ [$-0.16, -0.12$], $p < .001$), which reflected the drastically reduced effect of SFS for SE6 shifts, that was even close to zero for inharmonic sounds.

The GLME model above used different predictors for the SFS and SE factors to account for interactions. To quantitatively compare both factors, we also ran a GLME with numerical predictors for both variables. This model indicated that SFS shifts indeed yielded larger main effects ($\beta = 0.22$ [$0.20, 0.25$], $p < .001$) compared to SE ($\beta = 0.12$ [$0.10, 0.14$], $p < .001$). At the same time, SFS shifts also depended positively on harmonicity ($\beta = 0.09$ [$0.07, 0.12$], $p < .001$), whereas the harmonicity-SE interaction was weaker and in the opposite direction ($\beta = 0.03$ [$-0.06, -0.01$], $p = .005$). Thus, SFS had stronger effects compared to SE, but the effect of SFS was reduced for inharmonic sounds, whereas the effect of SE was only slightly greater for inharmonic sounds compared to harmonic sounds.

In sum, the two-dimensional shifts of Exp. 2 showed a dominance of SFS cues for harmonic sounds, but an increase of the contribution of SE cues for inharmonic sounds. This is coherent with the one-dimensional shifts of Exp. 1, where SFS responses had steeper slopes than SE responses for harmonic sounds, whereas SE responses had steeper slopes than SFS responses for inharmonic sounds. Importantly, for inharmonic sounds, we observed a cancellation effect of incongruent SFS and SE shifts. To confirm that this pattern of responses was not due to the specific kind of inharmonicity induced by the linear jittering operation together with the odd-

even attenuation, we conducted Exp. 3 using a potentially more simple, yet still inharmonic partial series.

One- and two-dimensional shifts with log-equidistant partials

In Exp. 3, we replaced the linearly-spaced partial series by a partial series, in which all partials were spaced 4 st apart (i.e., equidistant on a logarithmic frequency scale), such that there were three partials per octave and the resulting SFS shift was 4-st periodic. This can be viewed as a compressed version of the octave-spaced original Shepard tones. Such a choice was motivated by the need to sample accurately enough the SE cues over a reasonable range of audible frequencies. As a consequence, only three different SFS shifts could be tested: 1 st (up), 2 st (ambiguous), and 3 st (down). These are conceptually equivalent to the three shifts tested in Exp. 2. The SE cues were kept identical as for Exp. 1 and 2, with an octave spacing between peaks and hence 12-st circularity. For the SE cues, shifts of 1 st (up), 6 st (ambiguous), 11 st (down) were used. Exp. 3A paralleled Exp. 1, as we tested one-dimensional shifts with 1, 2, 3 st shifts for the SFS cues or, separately, 1, 6, 11 st shifts for the SE cues. Exp. 3B paralleled Exp. 2, as we tested 2D shifts along both the SFS and SE cues concurrently. The methodological details were otherwise identical between Exp. 1 and Exp. 3A, and between Exp. 2 and Exp. 3B.

Fig 4 shows the results for both Exp. 3A and 3B, following the convention of previous figures. For Exp. 3A, the GLME fit indicated an effect of shift type, SFS or SE ($\beta = -0.92 [-1.23, -0.61]$, $p < .001$) and shift size in st ($\beta = 1.28 [1.13, 1.42]$, $p < .001$). Both effects are qualified by a strong interaction between shift type and size ($\beta = 0.52 [0.37, 0.66]$, $p < .001$), suggesting a stronger effect of SFS cues compared to SE cues. For Exp. 3B, again we observed a relatively small fraction of trials for which “both” responses were provided (on average 13 percent of responses for synergistic trials and 23 percent of responses for antagonistic trials, see Fig A in S1 Text for details). Using a similar analysis method as for Exp. 2, we again obtained an interaction between the SFS and SE factors. Besides effects of SFS and SE (see Table D in S1 Text for details), there was a robust interaction between the SFS and SE6 factor ($\beta = -1.0 [-1.14, -0.86]$, $p < .001$), corresponding to the lack of effect of SFS shifts for SE6 shifts, but enhanced differences for SE11 shifts. Overall, Exp. 3 confirmed the interaction between SFS and SE cues in perceptual judgments and suggested that SE cues were robust in 2D shifts for a broader class of inharmonic sounds compared to those tested in Exp. 1 and 2.

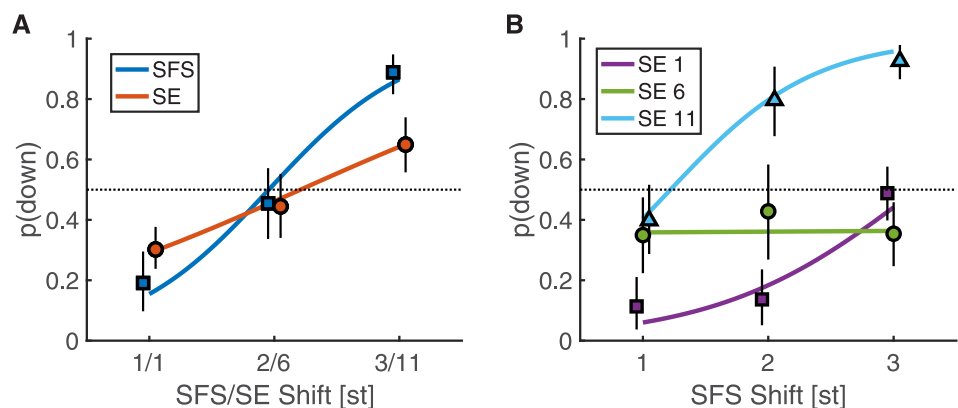


Fig 4. Proportion “down” responses in Exp. 3 with log-equidistant partials for one-dimensional shifts (A) and two-dimensional shifts (B). Colored lines indicate the fixed effects of the GLME model. Black vertical lines indicate 95% confidence intervals obtained by bootstrapping.

<https://doi.org/10.1371/journal.pcbi.1010307.g004>

Computational modeling

Rationale

Our stimuli were constructed along two acoustic dimensions, SFS and SE, and included harmonic sounds and two types of inharmonic sounds. The different conditions tested combined shift type (SFS, SE) with harmonicity (harmonic, inharmonic), with the full factorial set of conditions studied. To provide a synthetic understanding of such a rich dataset, we now turn to computational modeling. Based on previous results [5], one may broadly differentiate three types of candidate *auditory* cues (in contrast to the *acoustic* dimensions used for the stimulus design) that could underlie the perceptual judgements of listeners. First, listeners could have extracted a single pitch estimate for each sound in a trial, and compared the estimates across the two sounds of a trial. Such a pitch estimate is broadly assumed to be based on periodicity extraction, or, equivalently, f_0 estimation by matching harmonic templates to the SFS [5]. Second, listeners may have extracted frequency-shifts between individually resolved frequency components, that is, frequency components that are represented by distinct neural populations after peripheral auditory filtering in the cochlea [30, 59]. These frequency-shifts could be computed across pairs of components over the two sounds in a trial by a population of frequency-shift detectors and the dominant output from the population could then be taken as the direction of perceptual shift. Equivalently, such cues from resolved frequency components may also be related to so-called spectral tracking [28]. Third, listeners may compare the broad spectral peaks defined by the unresolved frequency components, that is, frequency components exciting overlapping neural populations after peripheral auditory filtering. These unresolved harmonics can provide coarse-grained spectral cues such as formants and have been shown to act as an important basis for timbre processing [12, 60, 61].

We implemented a relatively simple computational model to estimate these three types of cues (see Fig 5 and Methods section for details). For a fair comparison, all cues were estimated after a common front-end simulating peripheral frequency filtering at the level of the cochlea, to provide an “auditory representation” capturing some features of the neural representation available to the auditory system. The front-end chosen was a standard Gammatone auditory filterbank decomposition [62–64]. The first cue was based on the extraction of peaks in the autocorrelation (AC) function over time at the output of each Gammatone filter, summed across all filters, implementing a standard model of pitch estimation [5]. For the second and third cues, we computed the “excitation pattern” produced by each sound. Excitation patterns are a spectral representation of sound with frequency resolution matched to auditory peripheral filtering. They were computed here as the root-mean square of the output of each Gammatone filter over time. To determine the dominant direction of frequency shift in a given trial, we cross-correlated the excitations patterns for the two sounds of the trial and computed the center of mass (on the frequency axis) of this function. For the second cue, which was broadly conceived to capture resolved partials (CCres), the cross-correlation was computed for the low-frequency part of the excitation patterns. For the third cue, which was conceived to capture unresolved components (CCunres), the cross-correlation was computed for the high-frequency part of the excitation patterns. The frequency limit was conservatively chosen at ten times the geometric mean of the range of f_0 used in the experiment (905 Hz), corresponding to the average frequency of the tenth partial component of the test sounds. Other choices of frequency limits yielded qualitatively and quantitatively very similar results, indicating that the model did not critically rely on this choice.

These three types of auditory cues, AC, CCres, and CCunres, can be approximately mapped to the SFS and SE acoustic dimensions manipulated in the experiments. The AC cue should be

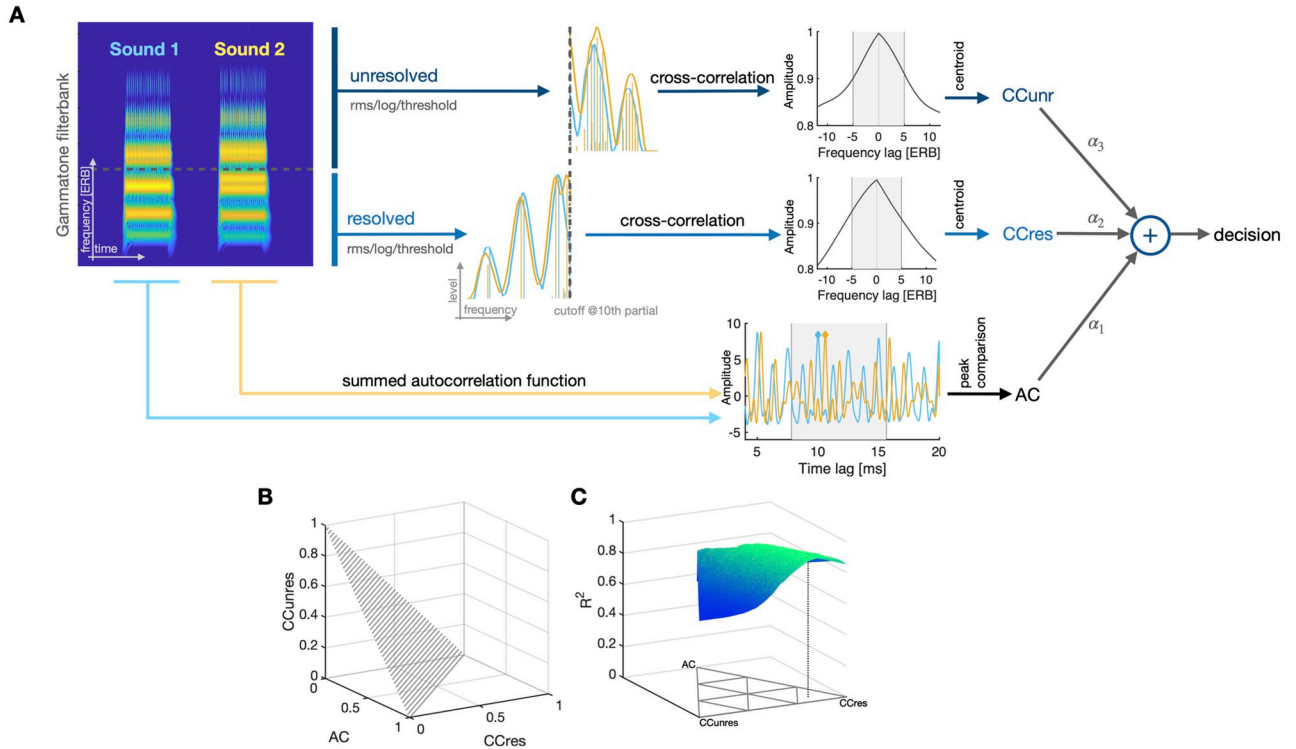


Fig 5. (A) Schematic of cue computation and integration, illustrated with a pair of harmonic sounds shifted by 11 and 1 st along the SFS and SE dimension, respectively. For the AC cue, autocorrelations within each auditory band are computed and subsequently summed across bands. From the resulting summed autocorrelation function, peaks are extracted from a search range corresponding to 64–128 Hz (gray patch) and subtracted, yielding an estimate of the periodicity difference of the two sounds; positive differences indicate downward movement. CC cues are computed using the rms-energy of bands across time, followed by a logarithm (conversion to level-domain) and thresholding below -30 dB peak level. The CCres cue considers the presumably resolved part of the excitation pattern below 905 Hz (geometric mean of the frequency of the 10th partial component across Exps. 1 and 2); the CCunres cue considers the unresolved part above that frequency limit. For both types of cues, the remaining excitation patterns are cross-correlated and the centroid (first moment) is computed in a search range (gray patches). Positive centroids indicate downward movement. Cues are integrated in a weighted sum (positive sum coded as “down”). (B) Possible cue weightings of sum one. (C) Cue weights projected onto x-y plane; the farther a point’s distance to a specific edge, the less weight the respective cue receives. The corresponding model fit is displayed on z-axis for one human listener’s results in the inharmonic SFS-EN condition. The dashed line shows the optimal weights for this example.

<https://doi.org/10.1371/journal.pcbi.1010307.g005>

impacted by changes along both SFS and SE dimensions. The CCres cue focuses on a region that is known for having a dominant impact on pitch [5]. Cross-correlation is not a standard way to estimate pitch, however, so our computation may be best understood in terms of local frequency-shift detectors based on SFS, rather than as a global pitch estimate. The CCunres cue is the one most directly related to SE as conceived in timbre models of e.g. brightness [16]. To check for these a priori mappings, correlations between the three different auditory cues, and between the cues and behavioral data, will be presented together with the modeling results.

Finally, because the behavioral data showed that listeners mostly provided a unitary estimate of “up” or “down” shift, we integrated all three cues in an additive decision model [22]. To this aim, the three cues were normalized by their variance and integrated as part of a weighted sum, such that the model yielded a single “up” or “down” decision on every trial. The model was then fitted by optimizing the correlation between the model and individual participants per experimental condition. The optimization procedure was a simple grid search. Fig 5B depicts the resulting parameter space and Fig 5C illustrates the grid search.

Modeling results

Across all experiments, all three auditory cues turned out to be relatively independent from each other. Computing the inter-cue correlation across all simulated trials of the three experiments indicated no relation between the AC cue with any of the two CC cues ($p > .26$). A weak, yet non-negligible linear relation was only observed between CCres and CCunres ($r = .22, p < .0001$). The low inter-cue correlation thus validates the a priori hypothesis that AC, CCres, CCunres cues captured qualitatively different aspects of the experimental stimuli. As these cues can be approximately mapped to stimulus dimensions, this relative independence further validates our terminology distinguishing SFS and SE as different spectral granularities.

To illustrate which aspects of the behavioral response patterns were captured by the model, Fig 6 presents the average response patterns from listeners together with the model average

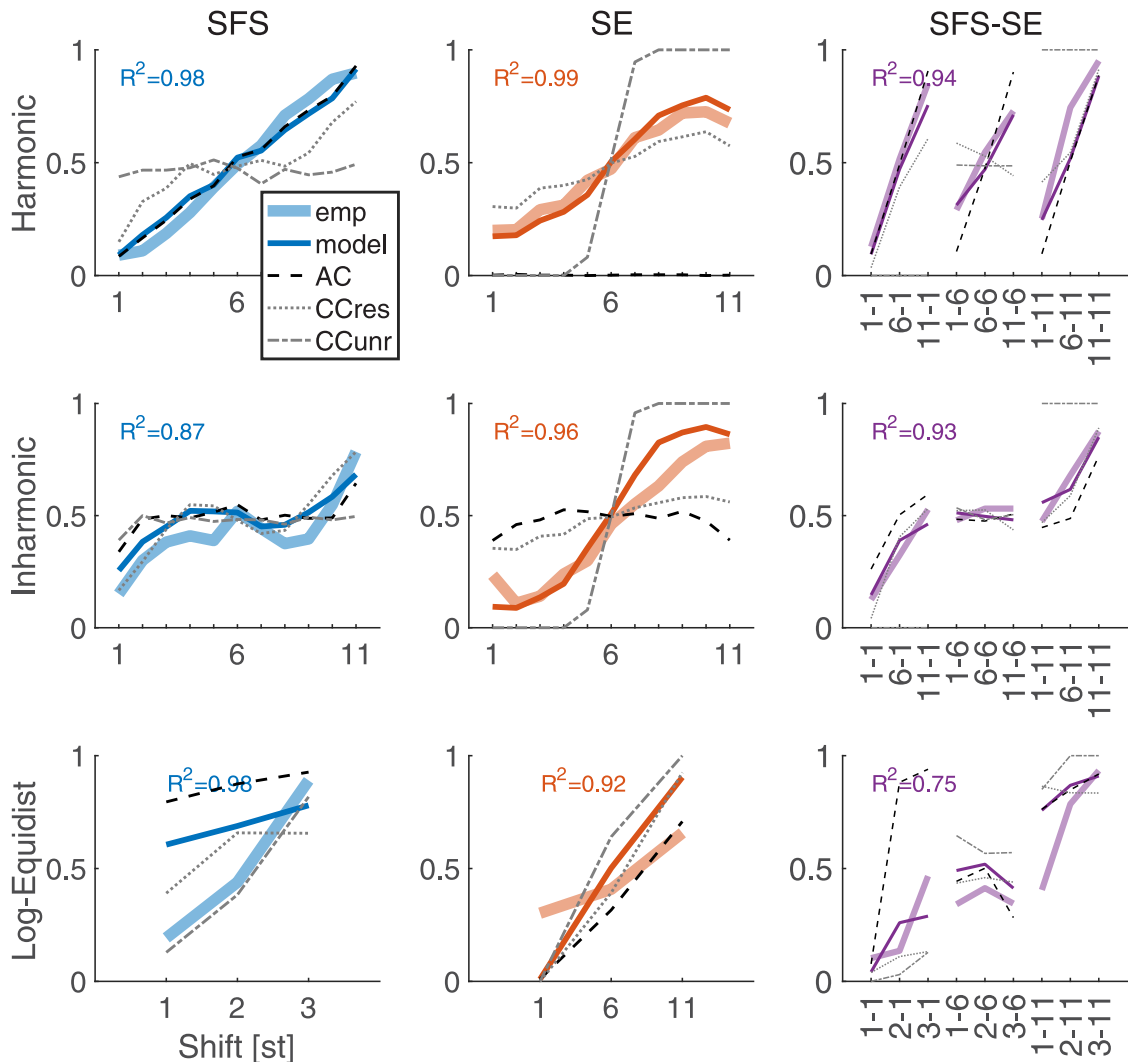


Fig 6. Model results and human listeners across all experiments. The y-axis shows the proportion of “down” responses. The x-axis indicate shift size; for two-dimensional shifts, pairs indicate shifts along the SFS and SE dimension, respectively. The rows index the properties of the fine structure (harmonic, inharmonic (Exps. 1&2) and log-equidistant (Exp. 3)). The columns index the shift type, one-dimensional SFS or SE, and two-dimensional SFS-SE with average data from human listeners and the model plotted in thick and thin colored lines, respectively. Raw predictions from the AC, CCres, and CCunres cues as indicated in the legend. R^2 values for correlation between average model and empirical data (omitted for log-equidistant SFS and SE shifts of Exp. 3 due to insufficient number of shifts). R^2 values for raw cues are provided in Table E in S1 Text.

<https://doi.org/10.1371/journal.pcbi.1010307.g006>

across all individually fitted models. The harmonic conditions, for SFS, SE, or two-dimensional SFS-SE shifts, yielded excellent fits with beyond 95% of shared variance between model and human data. In the inharmonic conditions, we still obtained more than 85% of shared variance for SFS shifts and more than 90% shared variance for SE and SFS-SE shifts. The most challenging case to interpret with the model appeared to be the inharmonic SFS-SE condition, with around 75% of shared variance. Furthermore, all three types of cues contributed in various combinations across experimental conditions and listeners. This is demonstrated in Fig B in [S1 Text](#), depicting paired differences of model fit between the full model and reduced model variants with fewer cues. The chosen model dimensionality thus seems necessary to fully account for the present data.

Our modeling approach allowed us to investigate which cues enabled such high shared variance between the behavioral and modeling data, for each experimental condition. The corresponding strength of the correlations between average human data and raw auditory cue estimates is provided in Table E in [S1 Text](#). Overall, the CCres cue appeared to be most versatile, yielding significant correlations for all of the three shift types, SFS, SE, and SFS-SE. The CCunres cue only yielded significant correlations for one-dimensional SE shifts. The AC cue yielded high correlations for SFS and SFS-SE shifts but not for SE. Note that even for inharmonic SFS shifts, the AC cue shared 83% of the variance with the average empirical responses, presumably highlighting the residual periodicity information comprised in shifts of inharmonic sounds.

To rule out the possibility that the success of the model to fit the behavioral data arose as a consequence of overfitting, we fitted the same model to shuffled data obtained by randomizing the indices of the shift size factor (using the same index randomization for all participants and weightings) for 1000 distinct index permutations. If our results were merely a consequence of overfitting through the optimization of cue weights, then the model should still successfully be fitted to human data for shuffled cue values. Thus, we tested the hypothesis that the model fitted with permuted shift indices achieved an equal or better fit (i.e., correlation) with the empirical data compared to our actual model. The advantage of the actual model was highly statistically significant, with corresponding p -values (i.e., proportion of positive trials in the permutation test) negligible ($p < .001$) in all but the log-equidistant conditions, with $p = .19$ for SFS, $p = .14$ for SE, and $p = .001$ for SFS-SE (see Fig C in [S1 Text](#) for a visualization of the corresponding test distributions). These conditions were also those with the least amount of experimental data available. Hence, our model fitting procedure generally did not yield overfitting, but rather allowed us to capture pertinent aspects of the auditory cues underlying perceptual responses.

Predictive power of the model estimated by cross-validation

So far, the model was able to fit satisfactorily all of the experimental data. We further wished to investigate whether the model also had predictive power. We thus used a cross-validation approach, training the model on part of the data and testing on unseen data. Because our model was fitted to each participant and condition, unseen data can be defined as: (i) unseen stimulus characteristics within a condition, that is, shift sizes; (ii) unseen participants; or (iii) unseen stimulus conditions (e.g., harmonic vs. inharmonic sounds). Each choice has its own merit, so we performed cross-validations with all three possibilities.

[Fig 7A](#) illustrates choice (i), by depicting R^2 values between model and behavioral data for the full set of n shifts as a function of the number of k shifts available for fitting (averaged across the $\binom{n}{k}$ possible drawings of subsets). The figure shows that the models needed only

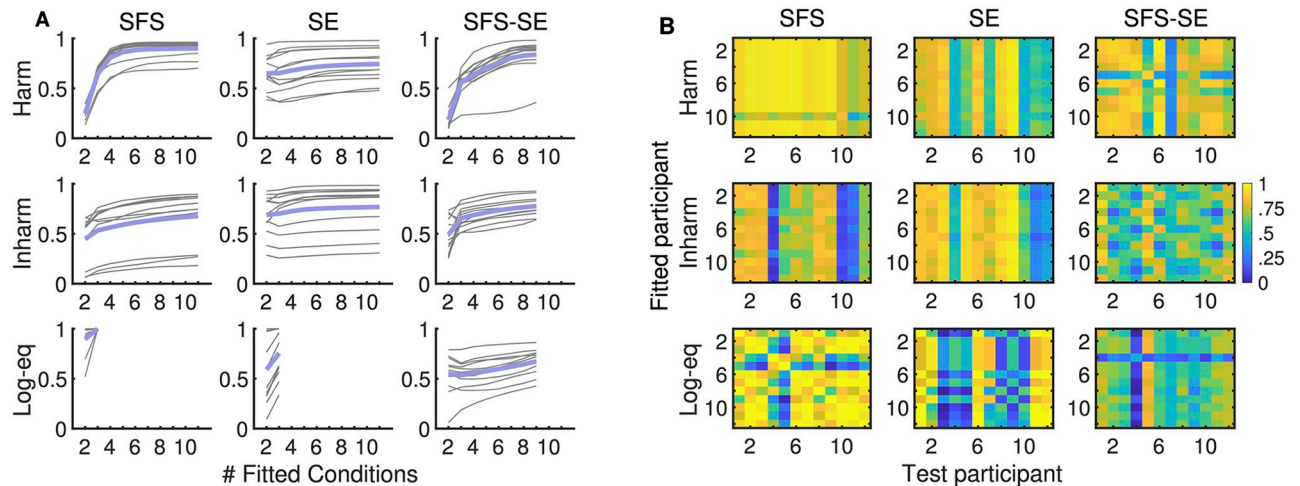


Fig 7. Generalization across shifts and participants. (A) R^2 values of models fitted on a subset of shifts (x-axis) and evaluated on the full set of shifts. Thin gray lines display individual data from individual participants, the thick blue line the average across participants. For every subset of shifts, all possible combinations of subsets were used and the average across all combinations is shown. (B) R^2 values of models fitted for one participant (x-axis) and tested on another participant (y-axis).

<https://doi.org/10.1371/journal.pcbi.1010307.g007>

limited information (i.e., number of available shifts for fitting) to achieve relatively high fit with the behavioral data. Specifically, in almost all conditions model accuracy plateaued after around half of shifts available for fitting. The harmonic SFS-SE appeared to be an exception to this and only plateaued at seven out of nine shifts. For harmonic SFS shifts, participants appeared to be more homogeneous in terms of the model fit ($R^2 > .5$ for all participants). This was not the case for inharmonic SFS shifts and harmonic/inharmonic SE shifts, where the model yielded R^2 values below 0.5 for a few participants. For two-dimensional SFS-SE shifts, the fitted models generally closely matched individual response patterns, with only one participant yielding a poor fit for the harmonic SFS-SE condition. Note that evaluations of the log-equitidistant SFS and SE conditions are of limited value due to the small number of shifts.

Fig 7B illustrates choice (ii), showing the generalization performance when the model was fitted to one participant and tested on another. For the harmonic-SFS condition, it is visible that models generalize well across participants (with the one noted exception). This is less the case for other conditions, suggesting that there were inter-individual differences in cue weighting across listeners. These differences will be systematically described in the next section.

Finally, there is a practical complication with fully evaluating choice (iii), cross-validating across conditions, because only four participants completed all experiment conditions. We nevertheless present the cross-validation results for these four listeners as Fig E in S1 Text, showing tentative generalization from this small sample.

Inter-individual differences in cue weighting

The model computed the same three auditory cues for all listeners, but allowed for inter-individual differences in the weighting of these cues when fitting model predictions to behavioral responses. To qualitatively illustrate the inter-individual differences across listener-fitted model, Fig 8 shows the optimal weights across participants and experimental conditions, as well as an estimate of the spread of these estimates obtained by a bootstrapping technique (see Methods). For harmonic SFS shifts, participants' behavior was best described by the AC cue with very little inter-individual differences across participants. This is generally consistent with the consensus idea that comparing two harmonic complex tones is mediated by a

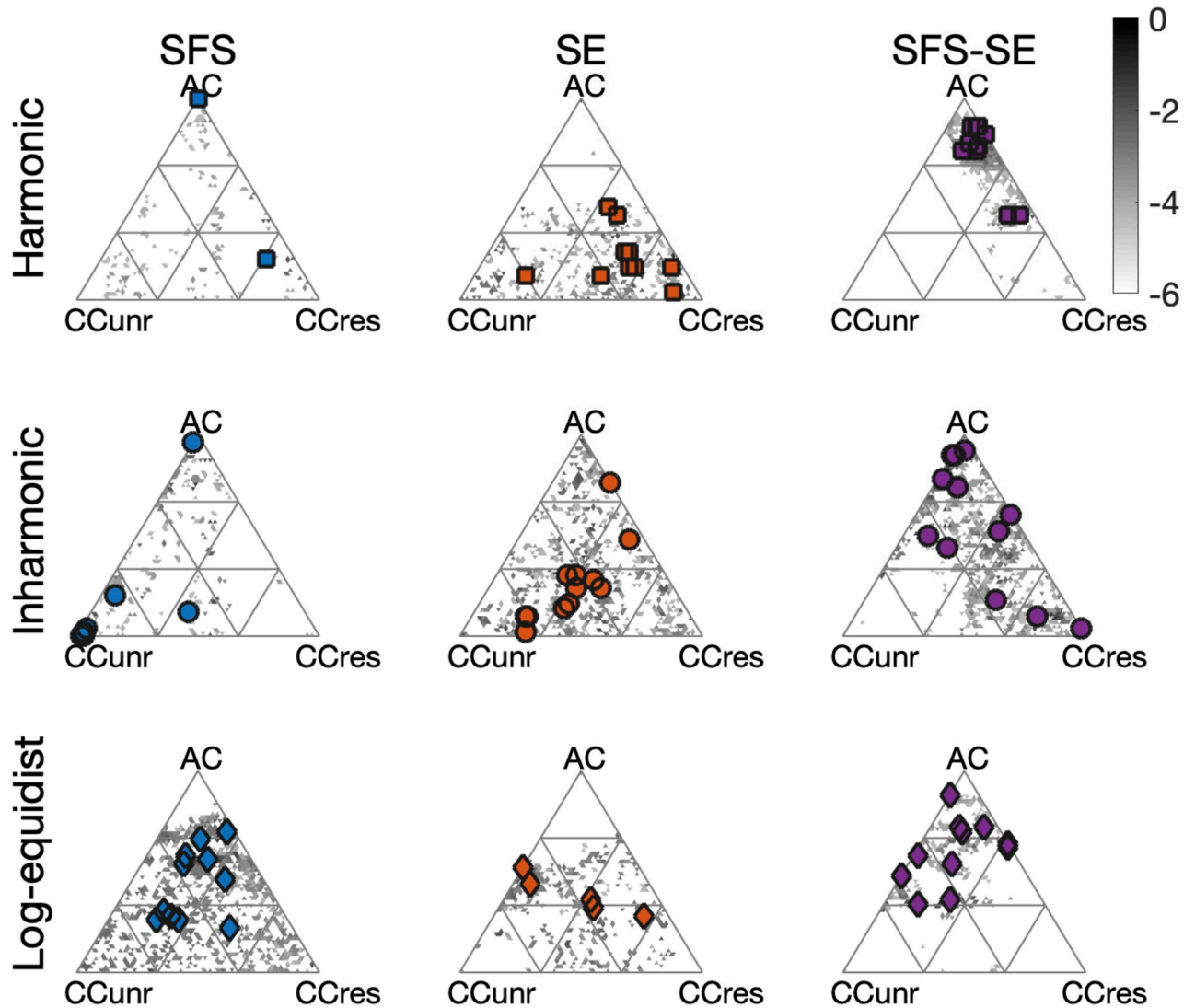


Fig 8. Cue weights for all conditions and participants with panels sorted as in Fig 7. Constrained to sum up to one, cue weights live on a two-dimensional hyperplane with triangular borders. Points in the triangular space correspond to weightings of the three cues AC, CCres, and CCunr (weights sum up to one). Large symbols correspond to the medians of the optimal weighting for individual listeners as computed from 2000 bootstrap iterations. Gray symbols highlight spread of bootstrap samples (the darker, the more overlap from different bootstrap iterations; specifically plotting \log_{10} of the empirical density function of the bootstrap distribution).

<https://doi.org/10.1371/journal.pcbi.1010307.g008>

periodicity analysis, the core mechanism of most current pitch models. There was one exception, namely a participant who more strongly relied on CCres cues.

More spread across cues weights was obtained in the other conditions, which could be explored for the first time with the generalized Shepard tones. For inharmonic SFS shifts, AC and CCunr were weighted most strongly across the group of listeners, yielding considerable spread of weightings across participants. For harmonic SE shifts, listeners most strongly weighed the CCres cue, even though one participant mostly relied on the CCunr cue. For inharmonic sounds, the weights were generally wide-spread across participants, suggesting large inter-individual differences. For inharmonic SE shifts, the distribution of optimal weights was roughly centred in the middle of the triangular plot, which suggests that most participants

tended to assign roughly equal weights all three types of cues. Correspondingly, the accuracy of generalization across participants, even generally robust, may vary as depicted in Fig 7B.

We now describe the two-dimensional SFS-SE shifts. These conditions are of special interest, because listeners may have implicitly relied on different weight combinations when faced with conflicting acoustic cues. This is qualitatively what was observed. In the harmonic SFS-SE case, two clusters of participants were observed along the AC-CCres continuum: most listeners predominantly relied on AC, the universal cue for harmonic SFS shift, while two participants also took into account CCres, the most weighed cue for harmonic SE shifts. A much more wide-spread clustering of participant was observed for the inharmonic SFS-SE case, although the CCunres cue was not predominantly used by any of the participants in this condition. Note that the inharmonic one-dimensional SFS or SE shifts were also the ones with the larger spread. Finally, for the log-equidistant SFS-SE case, AC and CCunres cues appeared to be dominant.

Discussion

We introduced a novel auditory stimulus to probe the effect of different acoustic and auditory cues on perceptual judgments of the “low” to “high” scale, which is commonly associated to pitch perception. Our stimuli were generalized versions of classic Shepard tones. The original Shepard tones proved pivotal in trying to disentangle the contribution of two putative cues to pitch termed chroma and pitch height [52, 65]. Our generalized Shepard tones further allowed the independent manipulation of two types of acoustic dimensions, SFS and SE, which could be crossed with properties of harmonicity and inharmonicity. The acoustic dimensions SFS and SE were chosen based on the physics of natural sounds, with SFS related to source excitation and SE related to filter resonance [12]. The resulting stimulus conditions were tested across three experiments: Exp. 1 showed that generalized Shepard tones displayed cyclicity over frequency shifts, the central feature of the original Shepard tones. We further demonstrated ambiguity for frequency shifts corresponding to a half frequency cycle. Moreover, because of the inherent symmetry of generalized Shepard tones, in Exps. 2 and 3 we could investigate in a parametrical manner the synergistic or antagonistic interactions of changes along the SFS and SE dimensions. A first finding was that, even in the case of conflict between SFS and SE, cues were implicitly combined for the perceptual reports. A detailed examination of the interactions between SFS, SE, harmonicity, and two types of inharmonicity demonstrated that the acoustic dimensions were not equally effective for all types of sounds. To quantify this observation, a computational model was designed, based on three estimated auditory cues. These auditory cues were chosen based on perceptual models of pitch (AC), frequency-shift detection (CCres), and timbre perception (CCunres). The model was highly effective at accounting for the behavioral data. It further specified the implicit weighting of cues in each experimental condition, revealing effects of sound type and inter-individual differences.

What did participants judge in the behavioral task?

Our experimental design involved presenting two sounds and asking listeners to report whether they heard a shift “up” or “down”. We explicitly stated in the instructions that the shift could be described as a change in pitch or in timbre brightness. A first issue is, then, what did listeners actually judge: pitch, or brightness? We will argue here and in rest of this Discussion that this distinction, while theoretically relevant, is not central to the interpretation of our experimental data and modeling results.

A large body of literature has now reported interactions between pitch and brightness in terms of discrimination experiments [8, 35, 38] and interval estimation [66, 67]. In spite of the

labels provided to listeners in these experiments, it is intrinsically impossible to know whether listeners judged “pitch” or “brightness” to perform the tasks successfully. Moreover, such a sharp distinction becomes a moot point in light of the strong interactions observed [19, 20].

A complementary approach consists of relating listeners’ behavior to auditory cues, which can be mathematically defined irrespective of the label attached to them and hypothetical underlying perceptual dimension. A long history of models have contributed to clarify and produce testable hypotheses about pitch (reviewed in [5]). It is precisely in this spirit that we designed our own computational model, which shares many features with existing ones. One novelty is that our model explicitly encodes several candidate auditory cues, all contributing to a single decision process on an equal footing, but with the weight of each cue left free to vary depending on the stimulus condition and listener. Experimentally, this approach proved successful to account for a large behavioral dataset, further suggesting that a combination of cues was necessary and sufficient to account for the perceptual “up” vs. “down” judgments provided by listeners.

Did participants access a perceptual correlate of each cue, and combine them at the decisional level, or was there rather a unitary perceptual dimension underlying their response? A notable feature of our findings concerns the cases where acoustic dimensions, and thus presumably auditory cues, were put in conflict. In these experiments (Exp. 2 and Exp. 3B), listeners had four response choices: “up”; “both (up dominant)”; “both (down dominant)”; “down”. Thus, they were encouraged to report when they heard two distinct cues signaling two different shift directions. However, “both” responses were only rarely reported, which was not a priori obvious. For instance, Singh and Hirsh [36] provided labels of pitch and timbre changes to report judgments of concurrent SFS and SE shifts, and listeners appeared to be able to use such labels independently. Interestingly, here “both” responses were not dominant even when responses were split between around 50% up and 50% down reports, suggesting a fundamental ambiguity in the stimulus similar to the tritone paradox for the original Shepard tones [52, 54–56]. Unlike the tritone paradox case, here the ambiguity was caused by opposing changes along acoustic dimensions, and not only by ambiguous cues in either domain. Such an ambiguity did not seem to clearly reach metacognitive awareness, as “both” responses were rare even in ambiguous trials. This finding parallels recent results using single-cue ambiguity with the original Shepard tones [68]. Moreover, a recent imaging study [65] also used Shepard tones with conflicting pitch chroma and pitch height shifts, akin to SFS and SE shifts. They also reported unitary perceptual judgements. In their study, perceptual judgements were overwhelmingly dominated by pitch chroma. But, as pointed out by the authors, this was likely due to a lack of parametric flexibility of the original Shepard tones. Our generalized paradigm extends these results, including cases similar to those of [65]. Consistent with their results, AC cues dominated harmonic SFS shifts. Yet, other conditions such as inharmonic SE shifts were strongly dominated by other cues derived from the SE shifts. A promising extension for future studies, suggested by one Reviewer, would be to manipulate experimental instructions to further test whether the unitary perception of frequency changes depending on several cues is mandatory or, itself, variable across participants and instruction sets. We would predict modulations of the strength of the unitary percept, possibly along the musician/non-musician divide that was observed in previous investigations of classic Shepard tones [69].

In summary, the present results suggest that changes along the frequency axis, to some degree independent of their acoustic nature, may be projected onto a “low” to “high” perceptual dimension. For clarity, we will now describe our results in terms of frequency change perception, and not pitch or brightness. Note that this terminology is not meant to imply that listeners did not in fact perform “pitch” judgments. Rather, it is intended to distinguish the remaining discussion points from this first, basic issue.

The role of acoustic cues in frequency change perception

Physical objects produce sounds that evolve over time, either because a vibratory source changes its behavior or because resonant bodies excited by the source change their shape. Such ecologically-relevant events lead to changes of SFS and SE properties. The present behavioral results show that both types of changes impact the perception of frequency change, but to a different extent depending on the nature of the sound.

Exp. 1 tested one-dimensional SFS and SE cues for harmonic and inharmonic series of frequency components. Harmonicity was found to mediate the relative strength of the perceived shift. For harmonic sounds, changes over the SFS dimension yielded steeper slopes as a function of shift size compared to changes over the SE dimension. For inharmonic sounds, the reverse was true with changes along the SE dimension producing steeper slopes. Exp. 2 tested two-dimensional changes on both the SFS and SE dimensions. Here again, harmonicity mediated the results, in a manner consistent with Exp. 1. The SE dimension had a much smaller effects on shift perception for harmonic sounds compared to inharmonic sounds. Exp. 3, using a different type of sounds, replicated the dominant effects of SE changes for inharmonic sounds. In summary, these findings suggest that the perception of frequency changes was dominated by SFS cues for harmonic sounds, but not necessarily for inharmonic sounds.

Why would different acoustic cues be used for frequency-change tracking depending on the harmonicity of the sounds? Speculatively, it can be remarked that harmonicity plays an important role in auditory scene analysis [70–72]. In particular, harmonicity favors the binding of frequency components within and across sounds [29, 70]. Local frequency changes in SFS may then be more informative for harmonic sounds, whereas coarser SE cues may take over for inharmonic changes. In the present study, one- and two-dimensional shifts were presented separately as part of different (sub-)experiments. It could be part of future work to explore whether interleaving these shift types can affect and potentially align cue weighting across conditions. However, a recent study tested pitch discrimination with interference of envelope variation and did not observe a mediating role of harmonicity throughout all experimental conditions [29]. Instead, they only found a mediating role for very large intervals (9 st) or in the case when there was no overlap between the frequency components of the two sounds, but not for natural speech or musical instrument sounds. It could be the case that natural sounds, potentially having weaker spectral modulations compared to what was induced by our SE dimension, are somewhat less prone to the observed interference effects. Future work should attempt to reconcile these apparently divergent findings on the role of harmonicity in acoustic cue weighting.

The role of auditory cues in frequency change perception

To bridge the gap between the acoustic description of stimuli and the behavioral judgments by listeners, we used a computational model estimating a variety of auditory cues available to auditory processing. Mostly, this involved simulating the effects of peripheral filtering on frequency encoding [62], and extracting three types of cues inspired by models of pitch perception (AC, [5]), frequency-shift detection (CCres, [30]), or timbre perception (CCunres).

The choice of cues was somewhat arbitrary. It was nevertheless partially validated by two experimental observations. First, the model achieved a high accuracy in fitting the behavioral data, with more than 90% of the variance explained in most cases. We further observed robust generalization across unseen shift conditions. The three cues selected were thus sufficient to explain frequency change perception with generalized Shepard tones. The three cues were also only weakly correlated with each other, showing that they were not redundant. The only weak but significant correlation that was observed was between CCres and CCunres cues. These

cues shared the same computational principle, cross-correlation between successive excitation patterns, but operated on different part of the frequency scale. CCres was focused on resolved harmonic while CCunres was focused on unresolved harmonics. The distinction between resolved and unresolved harmonics may not, in fact, be clear cut [73]. Thus, we are using the CCres and CCunres cues as a proxy for processes that capture distinct aspects of the excitation pattern, without necessarily being completely independent. Finally, all cues contributed in various combinations across experimental conditions and listeners, suggesting they were all necessary for our dataset. Future models may well, however, settle on a different set of cues within the cue-combination framework.

The auditory cues estimated could be mapped to some extent to the acoustic SFS and SE dimensions. For harmonic sounds, the AC cues provided a reliable estimation of sound periodicity and hence captured the specific pattern of frequency components for harmonic SFS. This may explain why AC dominated perceptual judgments for harmonic SFS shifts. Given the duality of spectral and temporal fine-structure information, we suspect that the AC cue could also be implemented based on SFS information alone [74], but not with the common Gammatone front end we chose to use for all cues estimated. For the CCres cue, because of the cross-correlation operation, we argue that this auditory cue is reflecting local shifts in the SFS rather than global pitch estimates, but this remains speculative. We acknowledge that the information derived from resolved harmonics is dominant for pitch perception as well [4, 74, 75]. The CCunres cue, finally, is most clearly linked to SE. Moreover, the distinction between resolved and unresolved harmonics will critically depend on the filter width chosen for the model front-end. Here, we selected the default Gammatone filterbank settings [63], but “functional” filter bandwidth could be investigated in the future as another potential individual difference across normal-hearing but also hearing-impaired listeners.

A natural question concerns the extent to which our results would generalize to more natural type of sounds. We designed the generalized Shepard tones with the aim of having the same topology for two distinct acoustic dimensions. This choice was thus not motivated primarily by a wish to have stimuli “representative” of our natural listening habitat, but rather, to have precisely controlled sounds to put a computational model to the test. However, unlike the classic Shepard tones, our stimuli included a harmonic spectral fine structure together with formant-like spectral envelopes. These sounds are in fact quite similar to the vocal sounds we encounter every day. Moreover, our inharmonic conditions also arguably resemble some natural sounds such as bell sounds. Finally, we are optimistic that our model will be successful for natural sounds, as they represent by far the easiest case to be modeled: the pitch of harmonic sounds containing resolved components will be captured by a version of our model that weights almost exclusively the AC cue. Indeed, this is what we observed for the harmonic SFS condition. As is often the case with pitch, artificial lab-designed sounds are useful to distinguish competing models that would all predict correctly the percept of harmonic complex sounds.

Inter-individual differences in frequency change perception

Another novel finding revealed by the multi-cue model concerns inter-individual differences. To simulate a perceptual decision, our model assigned weights to each auditory cue before combining them through simple summation (normalized by each cue’s variance). Weights were individually fitted to each listener. Results showed that weights indeed varied across listeners, especially for inharmonic sounds and for cases with conflicting SFS and SE cues. The differences observed were not due to model overfitting, but appear to represent true inter-

individual differences in the weighting of biologically-plausible auditory cues when faced with a task of frequency change perception.

Intriguingly, there are already several lines of evidence demonstrating large interindividual differences in pitch perception. To start with, the perception of the tritone paradox with Shepard tones famously shows differences in bias across listeners (which f_0 is perceived as higher). These inter-individual differences have been claimed to reflect the auditory experience of each listener, and in particular their linguistic background [76] although this has been contested [77, 78]. Experiments with simultaneous changes in SE and SFS often emphasize a large inter-individual variability in the results, even when independence between dimensions or labels were observed [33, 36]. In an experimental setting closer to our own, several studies have introduced conflicts between what has been termed “low-pitch” or “global pitch” on the one hand, and “spectral pitch” on the other hand [25, 79, 80]. In these studies, frequency components were changed across successive tones so that the missing fundamental changed in one direction whereas the frequency of each component changed in the opposite direction. In our terminology, this would approximately correspond to a conflict between SFS and SE cues. For our model, this would be a conflict between AC and CCres cues. Substantial interindividual differences were found in such tasks [80], with listeners described as holistic (AC cues dominant) or analytic (CCres cues dominant). These differences were again ascribed to auditory experience, in this case to musicianship [80, 81]). In our results, pronounced individual differences between listeners favoring different weightings of AC and CCres cues were observed in particular for the inharmonic two-dimensional SFS and SE shifts. This could suggest that the holistic and analytic distinction demonstrated by previous studies might be even more pertinent for the case of inharmonic sounds.

Pitch as an adaptive combinations of sensory cues

Based on the experimental data and modeling results, we argue that frequency changes are tracked thanks to a perceptual dimension derived from the combination of different auditory cues. At least parts of the acoustic cue manipulations that were investigated would conventionally be described as changes in pitch. Thus, as we observed that all judgements involving generalized Shepard tones mapped to a single perceptual “low” to “high” dimension, then this dimension may perhaps be described as a generalization of pitch. A nuance may be introduced between such a dimension and musical pitch, which for Western music has the added constraints of being able to support interval perception, melodic patterns discrimination, and be robust to frequency transposition, none of which were tested here. But, as reviewed in the Introduction, the distinction is not so clear in all musical idioms, and timbre has been shown to share the ability to convey musical melodies [46]. In summary, a broader and more speculative claim of our findings is that pitch is a perceptual dimension useful to track frequency changes, which may be seamlessly constructed from a variety of acoustic cues as relevant to each sound class and listener.

Such a claim is clearly somewhat unorthodox with respect to the long and respected tradition of investigations about pitch. However, multi-stage pitch models have already been proposed to account of temporal integration properties [82]. Moreover, it can be pointed out that a multi-cue model would put pitch on par with another fundamental dimension of auditory perception, namely spatial location. The perception of subjective spatial location tracks the physical spatial position of objects in the world. However, spatial position has no direct correlate in the sensory receptor for hearing, the cochlea, which is tonotopically organized in terms of frequency channels rather than space. As a consequence, location needs to be perceptually constructed from a combination of binaural and monaural cues that are

very different in nature from each other. Binaural cues compare the sensory information between the two ears, looking for discrepancies introduced by differences in acoustic paths from the object to the ears, whereas monaural cues are based on a location-based spectral filtering of the acoustic signal. Within binaural cues, interaural differences in timing (ITDs) and in level (ILDs) are processed in separate parts of the auditory pathways. Presented monaurally, the level differences corresponding to ecological ILDs are clearly heard as differences in loudness. However, ILD and ITDs are seamlessly combined into the perception of spatial location. These general features of auditory spatial location perception are qualitatively equivalent to our claim of a “unitary” pitch perception mechanism based on multiple cues.

The parallel between our results and the perception of spatial location can even be made more specific. In the implicit combination of binaural cues to derive location, the weighing of ITDs and ILDs is stimulus-specific: to localize low-frequency noise bands, ITD will be weighed more than ILDs, while the converse is true for high-frequency noise bands [83]. Thus, cue weighting depends on the stimulus. Conflict between ITD and ILD cues has also been investigated, and it has been observed that they can be precisely counterbalanced so that an ITD pointing e.g. to the left combined with an ILD pointing to the right results in a sound perceived in the middle [83]. Thus, they contribute to a unitary dimension. Finally, for broadband noise, there are distinct inter-individual differences in ITD and ILD weighting [84]. Similar effects of cue integration have been found for the lateralization of sounds with incongruent ITDs of signal temporal fine structure and temporal envelope [85], two different acoustic cues which are processed independently in the early stages of the auditory system, including pronounced inter-individual differences [86]. Monaural cues are also known to be strongly idiosyncratic, to the point that monaural cues from someone else’s ear are heard as timbre changes, but become transparent cues to location for one’s own ears. Moreover, it appears that they can be learnt through experience [87]. Thus, auditory cues to spatial location are derived and combined in a listener-specific manner.

Conclusion

The present behavioral data and computational results suggest that, just as is the case for spatial location, a unitary perceptual dimension of “pitch” is derived from a set of various acoustic cues in a sound-specific and listener-specific manner. There are no direct correlates of the physical properties of sound-producing objects on the cochlea, but there are many indirect correlates related to the frequency content of sounds. A perceptual dimension may then be constructed from several cues, with a stimulus-specific weighting of cues and additional inter-individual differences in the weighting. It might be tempting to think that pitch is a gift from above so that we can enjoy Bach chorales, or that it neatly maps to a single acoustic cue, but this is probably not how evolution works. Instead, we speculate that a compound perceptual dimension tracking frequency-changes has adaptive value for hearing in complex and ever-changing environments.

Methods

Ethics statement

The research reported in this manuscript was carried out according to the principles expressed in the Declaration of Helsinki and was approved by the ethics board of the University of Oldenburg (Drs. 09/2017). Formal consent (written) was obtained from the participants.

Participants

Participants were recruited via ads at the online job board of the University of Oldenburg and received monetary compensation for their time. All experiments tested participants of self-reported normal hearing. In Exp. 1, thirteen participants were tested, but one participant failed to meet the screening test (see Procedure) and was not considered in the analysis; the remaining twelve participants had a median age of 25 years (range: 20–56 years). Considering musical training of participants (which we did not specifically attempt to balance), there were two participants without any musical training; the ten participants with musical training were amateur musicians with a median of 11 years of training on their main instrument (range: 5–19 years) and a median of 54 points (range: 27–73) on the Goldsmiths-Musical Sophistication Index (Gold-MSI) musical training subscale [88].

In Exp. 2, twelve participants were tested and all passed the screening test. Participants had a median age of 24.5 years (range: 21–30 years). There were three participants without any musical training; the remaining participants were amateur musicians with a median of 10 years of training on their main instrument (range: 6–20 years) and a median of 54 points (range: 30–82) on the Gold-MSI musical training subscale.

In Exp. 3, twelve participants were tested (all passed the screening). Participants had a median age of 25 years (range: 19–29 years). There were four participants without any musical training; the remaining participants were amateur musicians with a median of 10 years of training on their main instrument (range: 3–15 years) and a median of 43 points (range: 30–62) on the Gold-MSI musical training subscale.

Exps. 1–3 were run with around two months separation between experimental sessions. From the twelve participants per experiment, four participants completed all three experiments, two participants completed two out of three experiments, and six participants completed only one experiment.

Stimuli

The experiment presented artificially synthesized tone complexes that were created using additive synthesis. Tone complexes were generated with fundamental frequency f_0 randomly drawn between 64 and 128 Hz and partials covered the range up to 16 kHz. In the harmonic condition, partial tones were at integer ratios $f_k = f_0 \cdot k$ (i.e., equidistant on a linear scale). In the inharmonic condition, partial tone frequencies were jittered such that the frequency of the harmonic partials were shifted randomly up or down by up to 50% of the frequency of f_0 (i.e., jittering preserved the rank order of partials). Formally speaking, $f_k = f_0(k + X_k - \frac{1}{2})$, where for all k , X_k is a uniformly distributed random variable with values between zero and one, see [28]. The same instantiation of X_k was used for any pair of sounds within trials of the inharmonic condition.

To create an SFS scale that was circular with regards to pitch chroma, the amplitudes of odd harmonics were attenuated as a function of the scale position in the octave, see Fig 1. At scale position 0, odd harmonics were attenuated by 22 dB and raised by 2 dB for every semitone (st) step. This attenuation is smaller than the value of 3.5 dB in [58], but in combination with SE manipulation appeared to yield favourable results. Hence, after 11 st steps, odd and even harmonics were of equal amplitude.

The SFS manipulation was combined with an SE manipulation that has been shown to yield circular brightness perception [48]. A global spectral envelope was defined as Gaussian distribution as a function of log-frequency with a mean three octaves above f_0 and a standard deviation of one octave. This global envelope was multiplied with a more fine-grained spectrally periodic envelope consisting of superpositions of octave-shifted Gaussians with a more

narrow standard deviation of 0.15 (and 0.2 in Exp. 3 to account for the log-equidistant partials). The resulting spectral envelope hence was the product of superimposing a global and a local spectral envelope. Fig 1B shows an illustration. Sounds were synthesized with a duration of 125 ms including a 5 ms fade-in and fade-out using cosine ramps. Inter-trial sequences were used to minimize carry-over effects [48, 56]. These consisted of three sounds with a duration of 125 ms (including 5 ms raised cosine fades), separated by 125ms inter-stimulus-intervals and sounds had random spectra with 30 partial tones of random initial phase and random frequencies drawn uniformly from a linear scale between 50 Hz and 10 kHz. These tone complexes were synthesized with the same global spectral envelope that was used for the target tones in the subsequent trial.

In Exp. 1, every trial presented a pair of sounds, which was generated through unidimensional shifts of either SFS or SE. For the target attribute, the starting position on the circular SFS or SE scales was chosen at random integer scale positions from 0–11 st. The attribute that was kept fixed was held constant at shift position 0. In Exp. 2, stimuli consisted of two-dimensional shifts, that is, both SFS and SE were shifted simultaneously. Here, the starting positions of both the SFS and SE attributes were chosen at random.

Stimuli in Exp. 3A and B used equidistant partial tones on a logarithmic scale with a distance of four semitones, that is, three partials per octave. In Exp. 3A, unidimensional shifts were presented, similar to Exp. 1. In Exp. 3B, bidimensional shifts were presented, similar to Exp. 2. Sound examples can be found under <https://uol.de/en/music-perception/sound-examples/generalized-shepard-tones-1/conflicting-spectral-cues>

Apparatus

Listeners were seated individually in a sound-proof lab and provided responses on a computer keyboard. Sounds were synthesized in MATLAB (<https://www.mathworks.com>) and were presented with an RME FIREFACE audio interface at an audio sampling frequency of 44.1 kHz and 24 bit resolution. Stimuli were presented diotically over Sennheiser I 200 headphones at 65 dBA sound pressure level, as calibrated by a Norsonic Nor140 sound-level meter with a G.R.A.S. IEC 60711 artificial ear to which the headphones were coupled.

Procedure and design

All experiments started with a screening task [48], comprising 40 SE trials with 2 st and 3 st shifts. The screening task was used to ensure that participants understood the task. Participants who did not achieve scores of more than 80% correct responses did not take part in the main experiment (which turned out to be the case only for one participant of Exp. 1).

The experimental instructions (originally formulated in German) explained that the task was to judge whether the second sound was perceived as “*higher or brighter (that is, going upwards) or lower or darker (that is, going downwards)*” in comparison to the first sound. For the two-dimensional shifts of Exps. 2 and 3B, instructions noted that it is possible that both directions can be heard at once, in which case participants were asked to indicate the dominant direction by selecting one of the four response alternatives: “down”, “both (down dominant)”, “both (up dominant)”, and “up”.

In Exp. 1, only one-dimensional shifts were presented. The experiment contained the factors of shift size (1–11 st), shift type (SFS, SE), and harmonicity (harmonic, inharmonic). There were 24 trials per combination of shift size and shift type x harmonicity condition with randomized scale positions of sound 1. Trials were split half across two sessions on separate days. Overall, this yielded $24 \times 11 \times 2 \times 2 = 1056$ trials per participant. Trials were presented in four blocks, with each block corresponding to one of the four shift type x harmonicity

conditions. The presentation order of blocks was randomized and the presentation of blocks was separated by short breaks of around 5 minutes. Levels of the shift-size factor were presented in fully randomized order.

Experiment 2 contained the factors SFS shift size (1, 6, 11 st), SE shift size (1, 6, 11 st), and harmonicity (harmonic, inharmonic). There were 36 trials per shift type with randomized scale positions of sound 1. Overall, this yielded $36 \times 3 \times 3 \times 2 = 648$ trials in total. The harmonicity factor was presented blockwise with short breaks separating the blocks and the data were collected in one session. Participants could take breaks between trials, if requested.

In Exp. 3A, participants completed the unidimensional shifts, with shifts of the target attributes (SFS, SE) presented blockwise. The experiment contained the factors shift type (SFS, SE) and shift size (1, 2, 3 for SFS; 1, 6, 11 for SE). There were 24 trials per shift size with randomized scale positions of sound 1, overall yielding $24 \times 2 \times 3 = 144$ trials. The shift type factor was presented blockwise with order of presentation randomized across participants. After a short break, participants went on to complete Exp. 3B, which contained the two factors SFS shift size (1, 2, 3 st) and SE shift size (1, 6, 11 st). As in Exp. 2, there were 36 trials per shift size with randomized scale positions of sound 1, overall yielding $36 \times 3 \times 3 = 324$ trials, which were presented in fully randomized order.

Data analysis

Data were analysed in MATLAB. In Exps. 2 and 3B, which comprised two-dimensional shifts, “both (up dominant)” responses were collapsed with “up” responses and “both (down dominant)” with “down” responses. This approach is justified by the generally low number of both responses, as visible in supplementary Fig A in [S1 Text](#).

Trial-level down responses were analyzed using generalized linear mixed-effect (GLME) models as implemented in the `fitglme` class, using a logit link function and a binomial distribution of the response variable. The following options were used as part of the `fitglme` class: `'Distribution', 'binomial', 'FitMethod', 'REML', 'CheckHessian', 1, 'DummyVarCoding', 'effects'`. Models comprised by-participant intercepts. By-item random intercepts (encoding the randomly chosen position of sound 1 along the circular SFS scale) were included for all but Exp. 3A. In Exp. 1, the shift factor was numerically coded without normalizing predictors. In Exp. 2, the SFS shift factor was coded numerically (without normalization) whereas for the SE factor, effects coding was used (corresponding to [Fig 3](#)). In Exp. 3A, both shift factors were numerically coded (using factor levels 1, 2, and 3). In Exp. 3B, factors were coded analogously to Exp. 2 (see [Fig 4B](#)), that is, the SFS factor was coded numerically and for the SE factor effects coding was used. For all other categorical predictors effects coding was used. Model formulas and full results are provided in supplementary Tables A-D in [S1 Text](#). The fitted statistical models are plotted in all results figures as solid lines. Square brackets in the text indicate 95% confidence (i.e., compatibility) intervals.

All experimental data and analyses together with the modeling code can be accessed here: https://github.com/Music-Perception-and-Processing/frequency_change.

Computation of acoustical cues

The two signals presented on every trial were processed by a 128-channel Gammatone filterbank spanning 20 to 16000 Hz. For the autocorrelation (AC) cue, a standard pitch estimator was used (de Cheveigné, 2005). Specifically, the AC functions were computed for every band of signals 1 and 2 and summed across bands. The maximal values of the resulting summed AC functions were used as f_0 estimates for signals 1 and 2, see [Fig 5](#). The f_0 search range was constrained between 64 and 128 Hz, which is the f_0 range used in Exps. 1 and 2. Formally, the AC

cue hence can be written as

$$AC = \hat{f}_0(S_1) - \hat{f}_0(S_2)$$

with $\hat{f}_0(S)$ denoting the f_0 estimate of signal S .

The cross-correlation (CC) cues extracted shifts between the excitation patterns of signals 1 and 2. The CCres and CCunres cues were computed identically, but considered the presumed resolved and unresolved portions of the excitation pattern, respectively, with the cutoff point chosen at the geometric mean of the 10th harmonic [89] of sounds in Exps. 1–2 (905 Hz). Note that other implementations of the cutoff frequency, chosen as the exact frequency of the tenth partial of the sound with lower f_0 on every trial or even chosen randomly in the range between 640 and 1280 Hz yielded qualitatively and quantitatively very similar results.

The root-mean-square sound levels were computed for every of the 128 channels of the filterbank, and the overall profile was peak-normalized at 0 dB across channels and thresholded at -30 dB (i.e., levels below -30 dB were set to -30 dB). The cross-correlation function between the two resulting excitation patterns of signals 1 and 2 was computed. Subsequently, the first moment of the CC function was computed in the heuristically chosen range of -5 to +5 ERBs, corresponding to a centroid of the CC function in ERB-lag units.

Formally, the CC cue can thus be written as

$$CC = \frac{\sum_{k=-5}^5 k \cdot f_{cc}(k, S_1, S_2)}{\sum_{k=-5}^5 f_{cc}(k, S_1, S_2)}$$

with $f_{cc}(\cdot, S_1, S_2)$ denoting the cross-correlation function of the excitation patterns of sounds S_1 and S_2 on a single trial.

We did not use the maximal value of the CC function (which would have been analogous to how the AC function was evaluated), because for the present stimuli with a fixed global spectral envelope in every trial, the maximal value turned out to constantly occur at a lag of zero, calling for a more sensitive measure. Instead, we used the CC centroid as a continuous estimate of the strength of downward vs. upward frequency movement with negative CC centroids indicating dominant downward movement and positive CC centroids indicating upward movement.

Cue weighting

Similar to classic maximum likelihood approaches of multisensory integration [22], our model integrated the sum of individual estimates corrected by their variance. To capture the potentially stimulus- and participant-dependent weighting of AC, CCres and CCunres cues [80], three weighting parameters $\alpha_{1/2/3}$ allowed to assess which type of cues would best correspond with participants' behavior. Let σ^2 denote the variance of the estimators specific to the stimuli computed individually for every of the three experiments. Then the three cues were integrated using the weighting factors $\alpha_1 + \alpha_2 + \alpha_3 = 1$ with the following response criterion ("down" response, if valid):

$$\alpha_1 \frac{AC}{\sigma_{AC}^2} + \alpha_2 \frac{CC_{res}}{\sigma_{CC_{res}}^2} + \alpha_3 \frac{CC_{unr}}{\sigma_{CC_{unr}}^2} > 0$$

For every participant and experimental block, we computed the optimal combination of weights, yielding the largest Pearson correlation between individual response pattern (proportion "down" responses) and corresponding model responses by using a grid-search with 2% resolution ($0 \leq \alpha_{1/2/3} \leq 1$ such that $\alpha_1 + \alpha_2 + \alpha_3 = 1$), yielding 1326 different parameter triples.

Because the non-negative weights live on a hyperplane, they can be represented as part of a triangle in two dimensions (Fig 5B and 5C).

The stability of the derived weights was assessed using bootstrapping with 2000 iterations. In every iteration, the response of individual participants was perturbed by only computing response patterns from a random subset of trials from the respective experiment (same number of trials as in the original experiment but drawn with replacement). The procedure for selecting weights described above was subsequently conducted for every bootstrap iteration (each containing a different perturbation of participant's responses). Fig 8 presents the median of the derived weights (large symbols) across all iterations in addition to all 2000 derived weights plotted with transparent symbols. That is, the less transparent a region in the figure is, the more often weights from different bootstrap iterations overlap in that region.

To measure how well the fitted model also accounted for the global pattern of responses (data averaged across participants), we averaged the models fitted to individual human participants. The resulting response patterns is shown in Fig 7 with R^2 values provided in the figure. For Exp. 3a, there are only three data points, thus correlation coefficients were not considered reliable and omitted in the figure.

Supporting information

S1 Text. Supplementary data plots and results from statistical analyses.
(PDF)

Acknowledgments

The authors thank Alain de Cheveigné and Laurent Demany for valuable comments on an earlier version of the manuscript.

Author Contributions

Conceptualization: Kai Siedenburg, Jackson Graves, Daniel Pressnitzer.

Data curation: Kai Siedenburg, Jackson Graves, Daniel Pressnitzer.

Formal analysis: Kai Siedenburg, Daniel Pressnitzer.

Funding acquisition: Kai Siedenburg.

Investigation: Kai Siedenburg, Daniel Pressnitzer.

Methodology: Kai Siedenburg, Jackson Graves, Daniel Pressnitzer.

Project administration: Kai Siedenburg, Daniel Pressnitzer.

Resources: Kai Siedenburg.

Software: Kai Siedenburg.

Supervision: Kai Siedenburg, Jackson Graves, Daniel Pressnitzer.

Validation: Kai Siedenburg, Jackson Graves, Daniel Pressnitzer.

Visualization: Kai Siedenburg, Daniel Pressnitzer.

Writing – original draft: Kai Siedenburg, Daniel Pressnitzer.

Writing – review & editing: Kai Siedenburg, Jackson Graves, Daniel Pressnitzer.

References

1. Bolinger D. Intonation and its parts: Melody in spoken English. Stanford University Press; 1986.
2. Mehr SA, Singh M, Knox D, Ketter DM, Pickens-Jones D, Atwood S, et al. Universality and diversity in human song. *Science*. 2019; 366 (6468). <https://doi.org/10.1126/science.aax0868> PMID: 31753969
3. Plack CJ, Oxenham AJ. The psychophysics of pitch. In: Pitch. Springer; 2005. p. 7–55.
4. Oxenham AJ. Pitch perception. *Journal of Neuroscience*. 2012; 32(39):13335–13338. <https://doi.org/10.1523/JNEUROSCI.3815-12.2012> PMID: 23015422
5. De Cheveigné A. Pitch perception models. In: Pitch. Springer; 2005. p. 169–233.
6. Pitteri M, Marchetti M, Priftis K, Grassi M. Naturally together: pitch-height and brightness as coupled factors for eliciting the SMARC effect in non-musicians. *Psychological Research*. 2017; 81(1):243–254. <https://doi.org/10.1007/s00426-015-0713-6> PMID: 26424464
7. Marty N, Marty M, Pfeuty M. Relative contribution of pitch and brightness to the auditory kappa effect. *Psychological Research*. 2019. PMID: 31440814
8. Allen EJ, Oxenham AJ. Symmetric interactions and interference between pitch and timbre. *Journal of the Acoustical Society of America*. 2014; 135(3):1371–1379. <https://doi.org/10.1121/1.4863269> PMID: 24606275
9. Allen EJ, Burton PC, Olman CA, Oxenham AJ. Representations of Pitch and Timbre Variation in Human Auditory Cortex. *Journal of Neuroscience*. 2016; 37(5):1284–1293. <https://doi.org/10.1523/JNEUROSCI.2336-16.2016> PMID: 28025255
10. Allen EJ, Burton PC, Mesik J, Olman CA, Oxenham AJ. Cortical Correlates of Attention to Auditory Features. *Journal of Neuroscience*. 2019; 39(17):3292–3300. <https://doi.org/10.1523/JNEUROSCI.0588-18.2019> PMID: 30804086
11. Fant G. Acoustic theory of speech production. The Hague, The Netherlands: Mouton; 1960.
12. Patterson RD, Irino T. Size matters in hearing: How the auditory system normalizes the sounds of speech and music for source size. In: Perspectives on auditory research. Springer; 2014. p. 417–440.
13. Terhardt E. Pitch, consonance, and harmony. *The Journal of the Acoustical Society of America*. 1974; 55(5):1061–1069. <https://doi.org/10.1121/1.1914648> PMID: 4833699
14. Handel S. Timbre perception and auditory object identification. In: Moore BC, editor. Hearing. Handbook of Perception and Cognition. San Diego, CA: Academic Press; 1995. p. 425–461.
15. Siedenburg K, Saitis C, McAdams S, Popper AN, Fay RR. Timbre: Acoustics, Perception, and Cognition. Springer Handbook of Auditory Research. Heidelberg, Germany: Springer Nature; 2019.
16. Siedenburg K, Barg FM, Schepker H. Adaptive auditory brightness perception. *Scientific Reports*. 2021; 11(1):1–11. <https://doi.org/10.1038/s41598-021-00707-7> PMID: 34728660
17. Almeida A, Schubert E, Smith J, Wolfe J. Brightness scaling of periodic tones. *Attention, Perception, & Psychophysics*. 2017; 79(7):1892–1896. <https://doi.org/10.3758/s13414-017-1394-6> PMID: 28752284
18. ANSI. Psychoacoustic Terminology: Timbre; 1960/1994.
19. Houtsma AJ. Pitch and timbre: Definition, meaning and use. *Journal of New Music Research*. 1997; 26(2):104–115. <https://doi.org/10.1080/09298219708570720>
20. Siedenburg K, McAdams S. Four Distinctions for the Auditory “Wastebasket” of Timbre. *Frontiers in Psychology*. 2017; 8 (1747). <https://doi.org/10.3389/fpsyg.2017.01747> PMID: 29046659
21. Noppeney U. Perceptual inference, learning, and attention in a multisensory world. *Annual Review of Neuroscience*. 2021; 44:449–473. <https://doi.org/10.1146/annurev-neuro-100120-085519> PMID: 33882258
22. Ernst MO, Banks MS. Humans integrate visual and haptic information in a statistically optimal fashion. *Nature*. 2002; 415(6870):429–433. <https://doi.org/10.1038/415429a> PMID: 11807554
23. Bachem A. Tone height and tone chroma as two different pitch qualities. *Acta Psychologica*. 1950; 7:80–88. [https://doi.org/10.1016/0001-6918\(50\)90004-7](https://doi.org/10.1016/0001-6918(50)90004-7)
24. Ueda K, Ohgushi K. Perceptual components of pitch: Spatial representation using a multidimensional scaling technique. *The Journal of the Acoustical Society of America*. 1987; 82(4):1193–1200. <https://doi.org/10.1121/1.395255> PMID: 3680777
25. Smoorenburg GF. Pitch perception of two-frequency stimuli. *The Journal of the Acoustical Society of America*. 1970; 48(4B):924–942. <https://doi.org/10.1121/1.1912232> PMID: 5480388
26. Pressnitzer D, Patterson RD, Krumbholz K. The lower limit of melodic pitch. *The Journal of the Acoustical Society of America*. 2001; 109(5):2074–2084. <https://doi.org/10.1121/1.1359797> PMID: 11386559

27. Oxenham AJ, Micheyl C, Keebler MV, Loper A, Santurette S. Pitch perception beyond the traditional existence region of pitch. *Proceedings of the National Academy of Sciences*. 2011; 108(18):7629–7634. <https://doi.org/10.1073/pnas.1015291108> PMID: 21502495
28. McPherson MJ, McDermott JH. Diversity in pitch perception revealed by task dependence. *Nature Human Behaviour*. 2017; p. <https://doi.org/10.1038/s41562-017-0261-8> PMID: 30221202
29. McPherson MJ, McDermott JH. Invariance in pitch perception.
30. Demany L, Ramos C. On the binding of successive sounds: Perceiving shifts in nonperceived pitches. *The Journal of the Acoustical Society of America*. 2005; 117(2):833–841. <https://doi.org/10.1121/1.1850209> PMID: 15759703
31. Cousineau M, Carcagno S, Demany L, Pressnitzer D. What is a melody? On the relationship between pitch and brightness of timbre. *Frontiers in Systems Neuroscience*. 2014; 7(127). <https://doi.org/10.3389/fnsys.2013.00127> PMID: 24478638
32. Semal C, Demany L. Dissociation of pitch from timbre in auditory short-term memory. *The Journal of the Acoustical Society of America*. 1991; 89:2404–2410. <https://doi.org/10.1121/1.400928> PMID: 1861000
33. Demany L, Semal C. Pitch versus brightness of timbre: Detecting combined shifts in fundamental and formant frequency. *Music Perception*. 1993; 11(1):1–13. <https://doi.org/10.2307/40285596>
34. Marozeau J, de Cheveigné A, McAdams S, Winsberg S. The dependency of timbre on fundamental frequency. *The Journal of the Acoustical Society of America*. 2003; 114(5):2946–2957. <https://doi.org/10.1121/1.1618239> PMID: 14650028
35. Melara RD, Marks LE. Interaction among auditory dimensions: Timbre, pitch, and loudness. *Perception & Psychophysics*. 1990; 48(2):169–178. <https://doi.org/10.3758/BF03207084> PMID: 2385491
36. Singh PG, Hirsh IJ. Influence of spectral locus and F 0 changes on the pitch and timbre of complex tones. *The Journal of the Acoustical Society of America*. 1992; 92(5):2650–2661. <https://doi.org/10.1121/1.404381> PMID: 1479128
37. Zarate JM, Ritson CR, Poeppel D. The Effect of Instrumental Timbre on Interval Discrimination. *PLoS one*. 2013; 8(9):e75410. <https://doi.org/10.1371/journal.pone.0075410> PMID: 24066179
38. Caruso VC, Balaban E. Pitch and Timbre Interfere When Both Are Parametrically Varied. *PLoS ONE*. 2014; 9(1):e87065. <https://doi.org/10.1371/journal.pone.0087065> PMID: 24466328
39. Lau BK, Oxenham AJ, Werner LA. Infant Pitch and Timbre Discrimination in the Presence of Variation in the Other Dimension. *Journal of the Association for Research in Otolaryngology*. 2021; 22(6):693–702. <https://doi.org/10.1007/s10162-021-00807-1> PMID: 34519951
40. Stilp CE, Kluender KR. Stimulus statistics change sounds from near-indiscriminable to hyperdiscriminable. *PLoS one*. 2016; 11(8):e0161001. <https://doi.org/10.1371/journal.pone.0161001> PMID: 27508391
41. Scharine AA, McBeath MK. Natural regularity of correlated acoustic frequency and intensity in music and speech: Auditory scene analysis mechanisms account for integrality of pitch and loudness. *Auditory Perception & Cognition*. 2018; 1(3-4):205–228. <https://doi.org/10.1080/25742442.2019.1600935>
42. Siedenburg K, Jacobsen S, Reuter C. Spectral envelope position and shape in orchestral instrument sounds. *The Journal of the Acoustical Society of America*. 2021; 149(6):3715–3727. <https://doi.org/10.1121/10.0005088>
43. Pratt CC. The spatial character of high and low tones. *Journal of Experimental Psychology*. 1930; 13(3):278. <https://doi.org/10.1037/h0072651>
44. Rusconi E, Kwan B, Giordano BL, Umiltà C, Butterworth B. Spatial representation of pitch height: the SMARC effect. *Cognition*. 2006; 99(2):113–129. <https://doi.org/10.1016/j.cognition.2005.01.004> PMID: 15925355
45. de Cheveigné A. Pitch perception. In: Moore DR, editor. *The Oxford Handbook of Auditory Science: Hearing*. vol. 3. Oxford University Press; 2010. p. 71–104.
46. McDermott JH, Lehr AJ, Oxenham AJ. Is relative pitch specific to pitch? *Psychological Science*. 2008; 19(12):1263–1271. <https://doi.org/10.1111/j.1467-9280.2008.02235.x> PMID: 19121136
47. Graves JE, Pralus A, Fornoni L, Oxenham AJ, Caclin A, Tillmann B. Short-and long-term memory for pitch and non-pitch contours: Insights from congenital amusia. *Brain and Cognition*. 2019; 136:103614. <https://doi.org/10.1016/j.bandc.2019.103614> PMID: 31546175
48. Siedenburg K. Timbral Shepard-illusion reveals perceptual ambiguity and context sensitivity of brightness perception. *The Journal of the Acoustical Society of America*. 2018; 143(2):EL93–EL98. <https://doi.org/10.1121/1.5022983>
49. Moore BC, Rosen SM. Tune recognition with reduced pitch and interval information. *The Quarterly journal of experimental psychology*. 1979; 31(2):229–240. <https://doi.org/10.1080/14640747908400722> PMID: 461680

50. Cousineau M, Demany L, Pressnitzer D. What makes a melody: The perceptual singularity of pitch sequences. *The Journal of the Acoustical Society of America*. 2009; 126(6):3179–3187. <https://doi.org/10.1121/1.3257206> PMID: 20000931
51. Castellengo M. *Ecoute musicale et acoustique*. Paris: Eyrolles; 2015.
52. Shepard RN. Circularity in judgments of relative pitch. *The Journal of the Acoustical Society of America*. 1964; 36(12):2346–2353. <https://doi.org/10.1121/1.1919362>
53. Risset JC. Paradoxes de hauteur: Le concept de hauteur sonore n'est pas le meme pour tout le monde. In: *Proc. of the 7th International Congress on Acoustics (ICA)*, Budapest; 1971. p. 613–616.
54. Deutsch D. A musical paradox. *Music Perception*. 1986; 3(3):275–280. <https://doi.org/10.2307/40285337>
55. Chambers C, Pressnitzer D. Perceptual hysteresis in the judgment of auditory pitch shift. *Attention, Perception, & Psychophysics*. 2014; 76(5):1271–1279. <https://doi.org/10.3758/s13414-014-0676-5> PMID: 24874257
56. Chambers C, Akram S, Adam V, Pelofi C, Sahani M, Shamma S, et al. Prior context in audition informs binding and shapes simple features. *Nature Communications*. 2017; 8:15027. <https://doi.org/10.1038/ncomms15027> PMID: 28425433
57. Warren J, Uppenkamp S, Patterson RD, Griffiths TD. Separating pitch chroma and pitch height in the human brain. *Proceedings of the National Academy of Sciences*. 2003; 100(17):10038–10042. <https://doi.org/10.1073/pnas.1730682100> PMID: 12909719
58. Deutsch D, Dooley K, Henthorn T. Pitch circularity from tones comprising full harmonic series. *The Journal of the Acoustical Society of America*. 2008; 124(1):589–597. <https://doi.org/10.1121/1.2931957> PMID: 18647001
59. Demany L, Trost W, Serman M, Semal C. Auditory change detection: simple sounds are not memorized better than complex sounds. *Psychological Science*. 2008; 19(1):85–91. <https://doi.org/10.1111/j.1467-9280.2008.02050.x> PMID: 18181796
60. Town SM, Atilgan H, Wood KC, Bizley JK. The role of spectral cues in timbre discrimination by ferrets and humans. *The Journal of the Acoustical Society of America*. 2015; 137(5):2870–2883. <https://doi.org/10.1121/1.4916690> PMID: 25994714
61. Siedenburg K, Fujinaga I, McAdams S. A Comparison of Approaches to Timbre Descriptors in Music Information Retrieval and Music Psychology. *Journal of New Music Research*. 2016; 45(1):27–41. <https://doi.org/10.1080/09298215.2015.1132737>
62. Patterson RD, Robinson K, Holdsworth J, McKeown D, Zhang C, Allerhand M. Complex sounds and auditory images. *Auditory Physiology and Perception*. 1992; 83:429–446. <https://doi.org/10.1016/B978-0-08-041847-6.50054-X>
63. Slaney M, et al. An efficient implementation of the Patterson-Holdsworth auditory filter bank. Apple Computer, Perception Group, Tech Rep. 1993; 35(8).
64. Hohmann V. Frequency analysis and synthesis using a Gammatone filterbank. *Acta Acustica United with Acustica*. 2002; 88(3):433–442.
65. Lin JFL, Imada T, Kuhl PK, Lin FH. Incongruent pitch cues are associated with increased activation and functional connectivity in the frontal areas. *Scientific Reports*. 2018; 8(1):1–12. <https://doi.org/10.1038/s41598-018-23287-5> PMID: 29581445
66. Russo FA, Thompson WF. An interval size illusion: The influence of timbre on the perceived size of melodic intervals. *Attention, Perception, & Psychophysics*. 2005; 67(4):559–568. <https://doi.org/10.3758/BF03193514> PMID: 16134451
67. Russo FA, Vuvan DT, Thompson WF. Vowel Content Influences Relative Pitch Perception in Vocal Melodies. *Music Perception: An Interdisciplinary Journal*. 2019; 37(1):57–65. <https://doi.org/10.1525/mp.2019.37.1.57>
68. Graves JE, Egré P, Pressnitzer D, de Gardelle V. An implicit representation of stimulus ambiguity in pupil size. *Proceedings of the National Academy of Sciences*. 2021; 118(48). <https://doi.org/10.1073/pnas.2107997118> PMID: 34819369
69. Pelofi C, de Gardelle V, Egré P, Pressnitzer D. Interindividual variability in auditory scene analysis revealed by confidence judgements. *Phil Trans R Soc B*. 2017; 372(1714):1–12. <https://doi.org/10.1098/rstb.2016.0107> PMID: 28044018
70. Bregman AS. *Auditory Scene Analysis: The Perceptual Organization of Sound*. Cambridge, MA: MIT Press; 1990.
71. de Cheveigné A. Harmonic Cancellation—A Fundamental of Auditory Scene Analysis. *Trends in Hearing*. 2021; 25. <https://doi.org/10.1177/23312165211041422> PMID: 34698574

72. Popham S, Boebinger D, Ellis DP, Kawahara H, McDermott JH. Inharmonic speech reveals the role of harmonicity in the cocktail party problem. *Nature Communications*. 2018; 9(1):2122. <https://doi.org/10.1038/s41467-018-04551-8> PMID: 29844313
73. Moore BC, Gockel HE. Resolvability of components in complex tones and implications for theories of pitch perception. *Hearing research*. 2011; 276(1-2):88–97. <https://doi.org/10.1016/j.heares.2011.01.003> PMID: 21236327
74. Shamma S, Klein D. The case of the missing pitch templates: how harmonic templates emerge in the early auditory system. *The Journal of the Acoustical Society of America*. 2000; 107(5):2631–2644. <https://doi.org/10.1121/1.428649> PMID: 10830385
75. Saddler MR, Gonzalez R, McDermott JH. Deep neural network models reveal interplay of peripheral coding and stimulus statistics in pitch perception. *Nature Communications*. 2021; 12(1):1–25. <https://doi.org/10.1038/s41467-021-27366-6> PMID: 34907158
76. Deutsch D. The tritone paradox: An influence of language on music perception. *Music Perception: An Interdisciplinary Journal*. 1991; 8(4):335–347. <https://doi.org/10.2307/40285517>
77. Repp BH. The tritone paradox and the pitch range of the speaking voice: A dubious connection. *Music Perception*. 1994; 12(2):227–255. <https://doi.org/10.2307/40285653>
78. Repp BH. Spectral envelope and context effects in the tritone paradox. *Perception*. 1997; 26(5):645–665. <https://doi.org/10.1068/p260645> PMID: 9488887
79. Laguitton V, Demany L, Semal C, Liégeois-Chauvel C. Pitch perception: a difference between right- and left-handed listeners. *Neuropsychologia*. 1998; 36(3):201–207. [https://doi.org/10.1016/S0028-3932\(97\)00122-X](https://doi.org/10.1016/S0028-3932(97)00122-X) PMID: 9622185
80. Schneider P, Sluming V, Roberts N, Scherg M, Goebel R, Specht HJ, et al. Structural and functional asymmetry of lateral Heschl's gyrus reflects pitch perception preference. *Nature Neuroscience*. 2005; 8(9):1241–1247. <https://doi.org/10.1038/nn1530> PMID: 16116442
81. Seither-Preisler A, Johnson L, Krumbholz K, Nobbe A, Patterson R, Seither S, et al. Tone sequences with conflicting fundamental pitch and timbre changes are heard differently by musicians and nonmusicians. *Journal of Experimental Psychology: Human Perception and Performance*. 2007; 33(3):743. <https://doi.org/10.1037/0096-1523.33.3.743> PMID: 17563235
82. Balaguer-Ballester E, Clark NR, Coath M, Krumbholz K, Denham SL. Understanding pitch perception as a hierarchical process with top-down modulation. *PLoS Computational Biology*. 2009; 5(3): e1000301. <https://doi.org/10.1371/journal.pcbi.1000301> PMID: 19266015
83. Macpherson EA, Middlebrooks JC. Listener weighting of cues for lateral angle: the duplex theory of sound localization revisited. *The Journal of the Acoustical Society of America*. 2002; 111(5):2219–2236. <https://doi.org/10.1121/1.1471898> PMID: 12051442
84. Lang AG, Buchner A. Relative influence of interaural time and intensity differences on lateralization is modulated by attention to one or the other cue. *The Journal of the Acoustical Society of America*. 2008; 124(5):3120–3131. <https://doi.org/10.1121/1.2981041> PMID: 19045797
85. Dietz M, Ewert SD, Hohmann V. Lateralization of stimuli with independent fine-structure and envelope-based temporal disparities. *The Journal of the Acoustical Society of America*. 2009; 125(3):1622–1635. <https://doi.org/10.1121/1.3076045> PMID: 19275320
86. Encke J, Dietz M. Influence of envelope fluctuation on the lateralization of interaurally delayed low-frequency stimuli. *The Journal of the Acoustical Society of America*. 2021; 150(4):3101–3108. <https://doi.org/10.1121/10.0006571> PMID: 34717449
87. Hofman PM, Van Riswick JG, Van Opstal AJ. Relearning sound localization with new ears. *Nature Neuroscience*. 1998; 1(5):417. <https://doi.org/10.1038/1633> PMID: 10196533
88. Müllensiefen D, Gingras B, Musil J, Stewart L. The musicality of non-musicians: an index for assessing musical sophistication in the general population. *PLoS ONE*. 2014; 9(2):e89642. <https://doi.org/10.1371/journal.pone.0089642> PMID: 24586929
89. Bernstein JG, Oxenham AJ. Pitch discrimination of diotic and dichotic tone complexes: Harmonic resolvability or harmonic number? *The Journal of the Acoustical Society of America*. 2003; 113(6):3323–3334. <https://doi.org/10.1121/1.1572146> PMID: 12822804