



HAL
open science

Metabolic actions of the growth hormone-insulin growth factor-1 axis and its interaction with the central nervous system

Omar Al-Massadi, Paolo Parini, Johan Fernø, Serge Luquet, Mar Quiñones

► **To cite this version:**

Omar Al-Massadi, Paolo Parini, Johan Fernø, Serge Luquet, Mar Quiñones. Metabolic actions of the growth hormone-insulin growth factor-1 axis and its interaction with the central nervous system. *Reviews in Endocrine and Metabolic Disorders*, 2022, 23 (5), pp.919-930. 10.1007/s11154-022-09732-x. hal-04235606

HAL Id: hal-04235606

<https://hal.science/hal-04235606>

Submitted on 11 Oct 2023

HAL is a multi-disciplinary open access archive for the deposit and dissemination of scientific research documents, whether they are published or not. The documents may come from teaching and research institutions in France or abroad, or from public or private research centers.

L'archive ouverte pluridisciplinaire **HAL**, est destinée au dépôt et à la diffusion de documents scientifiques de niveau recherche, publiés ou non, émanant des établissements d'enseignement et de recherche français ou étrangers, des laboratoires publics ou privés.

Metabolic Actions of the Growth Hormone-Insulin Growth Factor-1 axis and its Interaction with the Central Nervous System

Omar Al-Massadi^{1,2}, Paolo Parini^{3,4,5}, Johan Fernø⁶, Serge Luquet⁷, Mar Quiñones^{1,2,7}

¹Instituto de Investigación Sanitaria de Santiago de Compostela, Complejo Hospitalario Universitario de Santiago (CHUS/SERGAS), Travesía da Choupana s/n, 15706 Santiago de Compostela, Spain

²CIBER Fisiopatología de la Obesidad y Nutrición (CIBERObn), Santiago de Compostela 15706, Spain.

³Department of Laboratory Medicine, Division of Clinical Chemistry, Karolinska Institute, Stockholm, Sweden.

⁴Department of Medicine, Metabolism Unit, Karolinska Institute at Karolinska University Hospital Huddinge, Stockholm, Sweden.

⁵Patient Area Nephrology and Endocrinology, Inflammation and Infection Theme, Karolinska University Hospital, Stockholm, Sweden.

⁶Hormone Laboratory, Haukeland University Hospital, Bergen, Norway.

⁷Univ Paris Diderot, Sorbonne Paris Cité, Unité de Biologie Fonctionnelle et Adaptative, CNRS UMR 8251, F-75205 Paris, France.

Corresponding authors

Omar Al-Massadi. Instituto de Investigación Sanitaria de Santiago de Compostela, Complejo Hospitalario Universitario de Santiago (CHUS/SERGAS), Travesía da Choupana s/n, 15706 Santiago de Compostela, Spain. ORCID:0000-0003-0645-6159. e-mail: omar.al-massadi.iglesias@sergas.es

Mar Quiñones. Department of Physiology, Research Centre of Molecular Medicine and Chronic Diseases (CIMUS), Instituto de Investigación Sanitaria de Santiago de Compostela, Universidad de Santiago de Compostela (USC), Santiago de Compostela, Spain. ORCID: 0000-0003-0180-2147. e-mail: mar.quinones@usc.es

Acknowledgements: This research was funded by Instituto de Salud Carlos III-European Union, grant number PI21/01216 (OA-M) and Fundación de la Sociedad Gallega de Endocrinología y Nutrición (OA-M). Centro de Investigación Biomédica en Red (CIBER) de Fisiopatología de la Obesidad y Nutrición (CIBERObn). CIBERObn is an initiative of the Instituto de Salud Carlos III (ISCIII) of Spain which is supported by FEDER funds. Western Norway Regional Health Authority (Helse Vest RHF). This work was partly supported by funding from HUMAN within the European union's seventh framework program for research, technological development and demonstration; OA-M and M.Q. were funded by a research contract Miguel Servet (CP20/00146 and CP21/00108 respectively) from the ISCIII. The figures were generated by using materials from Servier Medical Art (Servier) under consideration of a Creative Commons Attribution 3.0 Unported License.

Competing Interests: The authors have no relevant financial or non-financial interests to disclose.

ABSTRACT

The growth hormone/insulin growth factor-1 axis is a key endocrine system that exerts profound effects on metabolism by its actions on different peripheral tissues but also in the brain. Growth hormone together with insulin growth factor-1 perform metabolic adjustments, including regulation of food intake, energy expenditure, and glycemia. The dysregulation of this hepatic axis leads to different metabolic disorders including obesity, type 2 diabetes or liver disease. In this review, we discuss how the growth hormone/insulin growth factor-1 axis regulates metabolism and its interactions with the central nervous system. Finally, we state our vision for possible therapeutic uses of compounds based in the components of this hepatic axis.

Keywords: GH, IGF-1, energy balance, brain, liver.

Abbreviations:

ARC	Hypothalamic arcuate nucleus
AgRP	Agouti-related peptide
BAT	Brown adipose tissue
bGH	Bovine growth hormone
CNS	Central nervous system
GH	Growth hormone
GHR	Growth hormone receptor
GHRLD	Liver-specific deletion of growth hormone receptor
hGH	Human growth hormone
IGF-1	Insulin growth factor-1
IGFBPs	Insulin growth factor binding proteins
IGF-1R	Insulin growth factor-1 receptor
NAFLD	Non-alcoholic fatty liver disease
NASH	Non-alcoholic steatohepatitis
NEFA	Non esterified fatty acid
NPY	Neuropeptide Y
mGH	Mouse growth hormone
ob/ob mice	Leptin deficient mice
POMC	Proopiomelanocortin
rhIGF-1	Recombinant human IGF-1
SS	Somatostatin
T2DM	Type 2 diabetes mellitus
Tg	Transgenic
WAT	White adipose tissue

1. Introduction

Obesity is reaching pandemic proportions in the world and becoming a major social, economic and health problem [1, 2]. The increased incidence of this condition has precipitated comorbidities such as cardiometabolic disease, type 2 diabetes mellitus (T2DM) and liver diseases, including non-alcoholic fatty liver disease and non-alcoholic steatohepatitis (NAFLD/NASH), that negatively impacts public health globally [3, 4].

One critical factor in the development of obesity is dysregulated feeding behaviour, a complex process regulated mainly by the central nervous system (CNS) according to homeostatic and hedonic drives [5, 6]. In the hypothalamus the arcuate nucleus (ARC) is the main neuronal core involved in homeostatic response, integrating information about the levels of nutrients and hormones in the periphery, and modulating the energy balance accordingly [7, 8]. The ARC is composed of two antagonistic neuronal populations, the neuropeptide Y/Agouti-related peptide (NPY/AgRP) neurons that induce a positive energy balance [9], and proopiomelanocortin (POMC) neurons that in turn induce a negative energy balance [10]. Both neuronal types are involved in the regulation of food intake, energy expenditure and nutrient partitioning. However, not all of the neuronal signals that control feeding behaviour originate in the brain; some are produced in the gastrointestinal tract or in the liver and these signals are transmitted to the brain.

In line with this, the experiments performed in the early 1960s by the group of Russek laid the grounds for the hepatostatic theory, which proposed that signals produced by the liver may contribute to changes in feeding behaviour [11]. The hepatostatic theory originated from the observation of a more pronounced decrease in food intake in dogs after direct administration of glucose into the liver compared to systemic administration of glucose [12, 13]. However, recent experimental data has contributed to increasing knowledge and led to more refined theories [14, 15].

The liver is a master metabolic organ that integrates peripheral nutrient status to control proper energetic homeostasis. Endocrine factors such as insulin, growth hormone (GH), and glucagon transmit information on the peripheral energetic status to the liver, but this organ also integrates signals directly from the nutrients themselves. Another relevant signal is the insulin growth factor-1 (IGF-1), a crucial factor in the control of metabolism, that is regulated by the action GH in the liver. In this review, we describe how the GH-IGF-1 axis controls energy balance and how metabolic actions may be induced by the activity of these factors in the CNS.

2. Growth hormone.

Growth hormone (GH), also known as somatotropin, is an amino acid peptide of 191 aa and a molecular weight of 22.650D that is released from the anterior pituitary somatotrophs [16-18]. GH secretion is regulated mainly by two hypothalamic hormones, the growth hormone-releasing hormone and somatostatin (SS), also referred as growth hormone-inhibiting hormone [19, 17, 20]. In addition to these canonical regulators, the gastric hormone ghrelin (GH-releasing peptide) is also an endogenous and strong GH secretagogue [21-24]. Ghrelin binds and activates its receptor, the growth hormone secretagogue receptor 1a, in the hypothalamus to induce GH secretion [25, 26]

GH binds to the GH receptor (GHR), a member of the class I cytokine receptor family, and an amino acid dimeric receptor with an extracellular domain, a single-pass transmembrane domain, and a cytoplasmic intracellular domain [27]. The GHR is located mainly in epiphyseal plates in long bones and spine, liver, muscles, and adipose tissue [28, 18, 20]. GH binding to its receptor leads to activation of several intracellular signal cascades, including mitogenic signaling through Janus kinase signal transducers and activators of transcription,

mitogen-activated protein kinase, phosphoinositide-3-kinase/Protein kinase B/mammalian target of rapamycin pathways and phospholipase C/Protein kinase C [29, 30].

GH presents a pulsatile secretion pattern, with phases of sudden release (dark phase), separated from each other by periods when there is no discharge.

2.1. Metabolic actions of GH:

GH is a pleiotropic hormone that, in addition to regulate linear growth has important biological functions such as the regulation of metabolism (Figure 1). In the following sections we describe the relationship of GH with some metabolic diseases.

2.1.1 GH and obesity:

GH is an anabolic hormone with an important impact on body weight and insulin homeostasis. Despite its name, there is an inverse relationship between body weight and GH levels in rodents [31, 32]. Moreover, humans with defective expression of GH receptor (GHR, Laron's syndrome) and GHR knockout (GHR^{-/-}) mice are obese, with reduced IGF-1 levels and increased insulin sensitivity [33-36]. Conversely, transgenic (Tg) mice expressing the bovine GH gene (bGH) are characterized by increased IGF-1 levels, accelerated growth, increased lean body mass and decreased white adipose tissue (WAT) mass [37, 38]. Moreover, genetic models of obesity, such as leptin deficient (ob/ob) mice, and obese humans have lower levels of circulating GH [39, 31, 40, 41]. Notably, GH increase lipolysis in adipocytes and enhance triglyceride secretion from the liver. Since GH directly influences fat mass by promoting lipolysis and preventing lipogenesis, obese patients have compromised GH-directed lipolytic and anti-lipogenic actions[34]. Thus, GH has a clear impact on body weight because of its action on lipid metabolism.

2.1.2. GH and NAFLD/NASH:

In line with these outcomes, other reports link the lipolytic effects of GH with the liver (Extensive reviewed in [42]). In this regard, diet-induced fatty liver is associated with reduced circulating GH [43]. Consistently, the liver-specific deletion of GHR (GHRLD) in mice results in a marked decrease in serum IGF-1 levels, significant increases in fat mass and serum lipids, and severe hepatic steatosis associated with systemic insulin resistance [44, 45]. Moreover, the rescue of GHR signalling in the liver of GHRLD mice completely restored hepatic triglycerides and glucose tolerance. In contrast, infusion of recombinant human IGF-1 (rhIGF-1) failed to correct hepatic steatosis, although circulating GH was restored to normal, indicating an IGF-1-independent effect of GH in hepatic steatosis[44]. These outcomes are also observed in humans, with patients with Laron's syndrome or hypopituitary adults with growth hormone deficiency exhibiting NAFLD [46-48, 45]. In agreement patients with acromegaly have lower levels of hepatic steatosis [49, 50].

Interestingly, the identification of differences between humans and mice is important to translational research. In line with this, the development of sophisticated mice models such the chimeric mice with humanized livers [51] may be of particular interest for assessing the role of GH on liver diseases. For example, mouse GH (mGH) cannot bind to human GHR (hGHR) in the liver of the humanized mouse due to species differences. However, treating these mice with human growth hormone (hGH) ameliorated fatty liver development [52]. Therefore, this mouse model will be useful tool for investigating the mechanism of the action of hGH on human hepatocytes in vivo as well as the role of GH in the onset of NAFLD/NASH.

2.1.3. GH and diabetes mellitus:

GH has also been described as a diabetogenic agent with the ability to increase hepatic glucose production [53]. GH influences glucose homeostasis by negatively affecting insulin

sensitivity, leading to a compensatory increase in insulin secretion that predisposes patients to diabetes. It has recently been reported that GH might also stimulate insulin secretion by directly affecting the function of pancreatic β cells in both animals and humans [54, 55].

2.2. GH targets the brain to mediate energy balance

Several studies have linked the action of GH in the brain to energy balance (For review see [56]). For example, GHR is widely expressed in the ARC [57] and GH-deficient or GHR-knockout (-/-) mice exhibit reduced formation of AgRP and POMC projections to postsynaptic targets [58]. Brain-specific GHR-deficient mice exhibited increased body weight, mostly due to excessive lean mass [59] possibly due impaired GH negative feedback. Consistently, GH overexpression in the CNS results in hyperphagia-induced obesity associated with insulin resistance and dyslipidaemia [60].

More specific studies with conditional mutant mouse models in specific neuronal populations reinforce these arguments. For example, GHR deletion in POMC cells blunts the glucoprivic hyperphagia following 2-deoxy glucose administration [61]. Also, genetic GHR inhibition in AgRP or POMC neurons decreases the density of the neuronal projections to other hypothalamic neurons[62]. In addition, pharmacological or genetic central activation of GH signalling triggers the expression of AgRP neurons in mice [59] and fish [63] and concomitantly increases food intake while reducing energy expenditure. Consistently, GH administration in humans increases the levels of plasmatic AgRP protein levels, and this effect is reversible after pharmacological GH inhibition [64]. While mice with specific deletion of GHR in AgRP neurons are comparable to wild type animals in ad libitum conditions, the mutant mice showed reduced activation of AgRP neurons after acute or chronic food deprivation [59]. Additionally, the impairments induced by the lack of GH signalling in the AgRP neurons are extensive to brown adipose tissue (BAT) thermogenesis

and energy expenditure under chronic starvation conditions in those mice[59]. Interestingly, the increase in food intake associated with low glucose levels is blunted in GHR-AgRP (-/-) mice compared to the intake by the control mice. In addition, the treatment with an antagonist of GH as pegvisomant, prevented the decrease in glucose levels and the decline in energy expenditure associated with chronic food restriction. Altogether, these findings point to a key role of GH signalling in AgRP neurons in the induction of metabolic responses to preserve the proper energy balance during times of famine.

2.3. Therapeutic action of GH:

Since GH is a potent lipolytic hormone and an inverse relationship has been reported between GH and body weight in mice and humans, therapies aimed to activate GH activities has been suggested as a possible therapeutic target against obesity.

In this sense, a vaccine against SS, the main negative regulator of GH has been developed with interesting results in preclinical models. Specifically, SS vaccination reduces around 10% of body weight in mice fed high fat diet [65]. In line with this, a clinical study shown modest reduction of fat mass and a mild increase in lean mass in obese individuals after a long-term treatment with GH [66]. Accordingly, therapies aimed to activate GH levels are proposed to alleviate NAFLD in a context of obesity. For example, GH administration lead to a significant reduction in liver fat content in obese patients with NAFLD [67, 68]. Interestingly, currently there are two clinical trials which results are not published yet, studying the action of the GH stimulation on subjects with NAFLD (NCT02217345; NCT03375788).

Conversely, immunological or pharmacological approaches that are capable of inhibit GH signalling represent a promising approach to facilitate weight loss and improve the efficacy of

obesity treatments, by possibly preventing compensatory decreases in energy expenditure during food restriction [69-71]. For example, a vaccine targeting ghrelin, a potent GH secretagogue with orexigenic activity [72], has been developed but however with mixed results. Whereas an anti-ghrelin antibodies has been shown to be effective in the induction of energy expenditure in mice and pigs [73-75], in humans no weight loss has been shown in clinical trials despite a strong anti-ghrelin immunological response [69, 76, 77].

Another line of research proposed the use of SS and its analogues for the treatment of specific obesity states associated with hyperinsulinemia. As we commented before, SS is a potent GH inhibitor but suppresses the secretion of other hormones such as insulin or glucagon [78]. Several studies have shown that SS and its analogues (octreotide and lanreotide) may limit insulin release and consequently decrease adipogenesis and weigh gain [70, 71]. Some clinical trials, both in children and adults, have recently examined the possible usefulness of the administration of SS analogues in hyperinsulinemic states [71, 79, 80]. Octreotide has been found to be effective in reducing hyperinsulinemia and body weigh in children's associated with hypothalamic obesity such as craniopharyngiomas [71, 81]. Similar results were obtained in adult obese people but in this case the effect over body weight is less effective than in children's [79, 82, 83].

Thus, seems that SS and its analogues has potentially therapeutic use against obesity by reducing insulin secretion in children with hypothalamic obesity and in adults with hyperinsulinemic obesity.

There is currently no clear explanation for the controversial findings regarding the strategy of inhibit or activate GH signaling, but it is believed that the processes that involves metabolic regulation are highly complex and that this may sometimes lead to counterintuitive findings.

Since GH is also the primary inducer of IGF-1 expression in the liver, and since together with insulin these anabolic hormones exert potent metabolic effects, we focus on the metabolic actions of IGF-1 in the following section.

3. Insulin growth factor 1:

IGF-1 is produced mainly in the liver by the action of GH [84, 85] and circulates bound to insulin growth factor binding proteins (IGFBPs), which act as transport proteins, modulate IGF-1 bioavailability, prolong its half-life, and regulate its activity in target tissues and clearance [86]. The human IGF1 gene is located on chromosome 12q23.2, consist of 6 exons of >84 kilobases, which, through alternative splicing from two promoters, generates multiple pre-propeptide transcripts [87]. IGF-I mediates its actions by binding to and activating the IGF1 receptor (IGF-1R), a ubiquitously expressed cell-surface tyrosine kinase receptor [88]. The IGF-1R gene consists of 21 exons of 315 kilobases and is located in chromosome 15q26.3. The IGF-1R is synthesized as a single polypeptide precursor structurally similar to the insulin receptor [89]. IGF-1 activates the IGF-1R and induces receptor autophosphorylation activating multiple signal cascades such the phosphatidylinositol 3-kinase/protein kinase B, RAS/RAF/MEK and Mitogen-Activated Protein Kinases/extracellular regulated kinase pathways [90].

3.1. Insulin growth factor-1 and its metabolic actions

IGF-1 has several metabolic effects on lipid metabolism, glucose homeostasis, and insulin sensitivity (Figure 2). Therefore, in this section we state how the dysregulation of IGF-1 levels affects these processes and thus its implication on the most common metabolic diseases.

3.1.1 IGF-1, obesity and liver disease:

In line with the prominent role of IGF-I in lipid metabolism, this hormone has been linked to markers of metabolic syndrome, diabetes, insulin resistance, and obesity [91, 92]. Also, it is inversely correlated with body mass index [93]. Further, abnormal circulating IGF-1 levels are present in obese humans, as well as in animal models of obesity [91]; and circulating IGF-1 inversely correlates to visceral fat mass [94, 95]. In addition, another study have reported that circulating IGF-1 correlates to increased adiponectin levels and reduced prevalence of metabolic syndrome [96], while the severity of liver steatosis seems to be inversely correlated with circulating IGF-1 levels [97]. This can in part be explained by the interference on IGF-1 and insulin signalling of circulating non esterified fatty acids (NEFAs) once taken up by the liver and by their accumulation leading to hepatic steatosis.

3.1.2 IGF-1 and insulin sensitivity and glucose homeostasis

Studies in humans showed that IGF-1 administration increased lipid oxidation, energy expenditure and improves insulin resistance [98-100], and these effects are believed to be due to IGF-1 suppression of insulin secretion, in turn leading to augmented lipolysis in adipose tissue and promotion of NEFA use in muscle and liver. IGF-1 promotes fatty acid transport in muscle [101, 99, 102] and its specific inhibition in this tissue causes severe consequences, such as insulin resistance and eventual development of diabetes[101]. Consistently low circulating IGF-1 levels are also associated with reduced insulin sensitivity [103], glucose intolerance, and T2DM [103-105]. In line with this, several studies linked the action of IGF-1 and glucose homeostasis. For example, an epidemiological study revealed that patients with a polymorphism in the promoter region of the IGF-1 gene secreted 40% less IGF-1 than the control subjects [100, 106], were shorter and had increased prevalence of T2DM among the elderly [100, 107] . Moreover, another study supported the connection of IGF-1 and glucose

homeostasis by showing that exogenous administration of IGF-1 enhanced insulin sensitivity in healthy adults [108, 109] and in T2DM patients [100, 110, 111]. Notably, the low levels of circulating IGF-1 are independently associated with hyperglycaemia and insulin resistance in adults [112, 113].

Consistent with human studies, mice heterozygous for genetically depleted IGF-1 develop glucose intolerance during fasting, whereas the homozygous hepatic IGF-1(-/-) mice show increased insulin resistance and glucose intolerance[114]. Further, liver-specific IGF-1 (-/-) mice developed muscle insulin resistance, showing an increase in insulin concentrations [115]. Interestingly, the glucose intolerance was ameliorated by administration of IGF-1 or the GHR antagonist pegvisomant [100, 116]. Importantly, the concomitant administration of IGF-1 and pegvisomant resulted in further enhancement of insulin sensitivity, suggesting that IGF-1, at supraphysiological doses, has important and independent effects on hepatic insulin sensitivity [100, 114]. In summary, IGF-1 enhances insulin sensitivity by suppressing insulin and GH secretion, and enhances insulin signalling indirectly by reducing NEFAs flux from the circulation to the liver and muscle. Hence, administration of IGF-1 at high doses typically results in hypoglycaemia, despite the improved downregulation of insulin concentrations in circulation [117, 118]. Since IGF-1 reduces serum GH levels by a feedback mechanism in the CNS, it may enhance insulin actions in the liver by suppressing the effects of GH on this organ [119]. Therefore, IGF-1 seems to indirectly modulate peripheral carbohydrate metabolism through suppression of GH and enhancement of insulin actions. To this, some experimental evidence suggests that some of these actions on carbohydrate metabolism are induced by the action of IGF-1 in the brain, as well.

3.2. IGF-1 action in the brain

IGF-1 and IGF-R1 are expressed together in common brain areas, suggesting paracrine or autocrine activity [120]. By crossing the blood brain barrier, IGF-related peptides may also act in the brain, and IGF-1 can be found in the cerebrospinal fluid, in the hypothalamus, and in the hippocampus. Some studies reported an association of low serum IGF-1 levels and cognitive dysfunction but also demonstrated a correlation between endocrine IGF-1 levels and other brain-related functions, including protection against cognitive and neurosensory deficits, depressive-like symptoms, and neurodegeneration [121, 122]. Furthermore, IGF-1 administration in the brain can improve insulin sensitivity in young animals and aged rats [123, 124]. Therefore, IGF-1 acts centrally to regulate insulin sensitivity and reduces hepatic glucose production in rodents. In line with these findings, additional experimental evidence supports the description of IGF-1 action in the brain. Central IGF-1 administration decreases food intake in chicks [125, 126] by increasing the levels of hypothalamic POMC and the phosphorylated form of protein kinase B [125]. Furthermore, central administration of IGF-1 decreased food intake in diabetic rats [127]. It is well known that the mechanism by which IGF-1 inhibits GH secretion in the pituitary involves the upregulation of hypothalamic SS [128]. Therefore, in the brain, IGF-1 seems to act not only to exert the negative feedback regulation of GH by its action on the pituitary but also regulates insulin resistance and food intake by its action in the hypothalamus.

3.3. Therapeutic use of IGF-1

Due to its importance in maintaining proper energy homeostasis, IGF-1 has been proposed as therapeutic agent for the treatment of different diseases. For example, IGF-1 analogues have been tested in clinical trials for the treatment of the short stature that is associated with GHR deficiency [129-131]. Furthermore, the use of rhIGF-1 (mecasermin) or an equimolar

combination of IGF-1 and insulin growth factor binding protein-3 (mecasermin rinfabate) are marketed for the treatment of severe primary IGF-1 deficiency. Phase II clinical trials showed that mecasein rinfabate enhanced insulin resistance and the glycaemic index in the type 1 diabetes mellitus and T2DM patients [131, 132]. Despite the clinical benefits, the safety of long-term administration of IGF-1 remains controversial due to several side effects, such as hypoglycaemia and loss of appetite [129, 133].

Interestingly, recent findings suggests that other members of the IGF family such as IGFBPs could be useful therapeutic targets over metabolic disorders. Both IGFBP-1 and IGFBP-2 have been positively correlated with insulin sensitivity in humans and data in animal's models implicate its direct involvement in the molecular regulation of insulin signaling and adiposity (for review see [134]).

4. Concluding remarks

In this review, we covered the metabolic actions the GH/IGF-1 axis, and its effect on energy balance. These endocrine signals that convey or are released from the liver appear not only as key metabolic factors directly implicated in obesity, T2DM and NAFLD/NASH by their action in glucose and lipid metabolism, but also as regulators of food intake and body weight through their action on the CNS. It is important to note that some authors propose the use of IGF-1 therapies only in states of IGF-1 deficits; however, other authors suggest that the problems with IGF-1 applications are based on dosing issue because most of the studies that investigate IGF-1 biology have been done with supraphysiological doses [85]. Notably growing experimental evidence describing the metabolic actions of IGFBPs could boost the research focus in therapeutic potential of IGF-1 system against insulin resistance or states associated with higher adiposity such as obesity.

On the other hand, the development of NASH models using chimeric mice may be of particular interest for assessing the efficacy and safety of new therapeutic agents involving

GH-IGF-1 axis [52]. In this regard, if we taking into account that GH levels decrease with age, leading to a GH deficiency that in turn precipitates the development of NAFLD, these mice will be useful tools for investigating the role of hGH in age-dependent onset of NAFLD/NASH.

In conclusion, we highlight the activity of the hepatic GH-IGF-1 axis, as an interesting tool for the study and precise understanding of metabolic and liver diseases by its crosstalk with the brain.

Author contributions

OA-M and M.Q. conceptualized the article, OA-M and MQ performed the literature search OA-M, P.P., JF, S.L and M.Q. drafted and/or critically revised the work.

Conflict of interest

The authors declare that they have no conflicts of interest in the authorship or publication of this work.

References

1. Collaboration NCDRF. Rising rural body-mass index is the main driver of the global obesity epidemic in adults. *Nature*. 2019;569(7755):260-4. doi:10.1038/s41586-019-1171-x.
2. Hill JO, Peters JC. Environmental contributions to the obesity epidemic. *Science*. 1998;280(5368):1371-4. doi:10.1126/science.280.5368.1371.
3. Angulo P. Nonalcoholic fatty liver disease. *The New England journal of medicine*. 2002;346(16):1221-31. doi:10.1056/NEJMra011775.
4. Quinones M, Ferno J, Al-Massadi O. Ghrelin and liver disease. *Reviews in endocrine & metabolic disorders*. 2020;21(1):45-56. doi:10.1007/s11154-019-09528-6.
5. Al Massadi O, Nogueiras R, Dieguez C, Girault JA. Ghrelin and food reward. *Neuropharmacology*. 2019;148:131-8. doi:10.1016/j.neuropharm.2019.01.001.
6. Al-Massadi O, Dieguez C, Schneeberger M, Lopez M, Schwaninger M, Prevot V et al. Multifaceted actions of melanin-concentrating hormone on mammalian energy homeostasis. *Nature reviews Endocrinology*. 2021;17(12):745-55. doi:10.1038/s41574-021-00559-1.
7. Jais A, Bruning JC. Arcuate nucleus-dependent regulation of metabolism - pathways to obesity and diabetes mellitus. *Endocrine reviews*. 2021. doi:10.1210/endrev/bnab025.
8. Al Massadi O, Lopez M, Tschop M, Dieguez C, Nogueiras R. Current Understanding of the Hypothalamic Ghrelin Pathways Inducing Appetite and Adiposity. *Trends in neurosciences*. 2017;40(3):167-80. doi:10.1016/j.tins.2016.12.003.
9. Luquet S, Perez FA, Hnasko TS, Palmiter RD. NPY/AgRP neurons are essential for feeding in adult mice but can be ablated in neonates. *Science*. 2005;310(5748):683-5. doi:10.1126/science.1115524.

10. Quarta C, Claret M, Zeltser LM, Williams KW, Yeo GSH, Tschöp MH et al. POMC neuronal heterogeneity in energy balance and beyond: an integrated view. *Nat Metab.* 2021;3(3):299-308. doi:10.1038/s42255-021-00345-3.
11. Russek M. Participation of hepatic glucoreceptors in the control of intake of food. *Nature.* 1963;197:79-80. doi:10.1038/197079b0.
12. Russek M. Current status of the hepatostatic theory of food intake control. *Appetite.* 1981;2(2):137-43. doi:10.1016/s0195-6663(81)80007-4.
13. Tordoff MG, Friedman MI. Hepatic portal glucose infusions decrease food intake and increase food preference. *The American journal of physiology.* 1986;251(1 Pt 2):R192-6. doi:10.1152/ajpregu.1986.251.1.R192.
14. Bray GA, Campfield LA. Metabolic factors in the control of energy stores. *Metabolism: clinical and experimental.* 1975;24(1):99-117. doi:10.1016/0026-0495(75)90011-6.
15. Schwartz MW, Woods SC, Porte D, Jr., Seeley RJ, Baskin DG. Central nervous system control of food intake. *Nature.* 2000;404(6778):661-71. doi:10.1038/35007534.
16. Dieguez C, Casanueva FF. Influence of metabolic substrates and obesity on growth hormone secretion. *Trends Endocrinol Metab.* 1995;6(2):55-9. doi:10.1016/1043-2760(94)00206-j.
17. Casanueva FF. Physiology of growth hormone secretion and action. *Endocrinology and metabolism clinics of North America.* 1992;21(3):483-517.
18. Ranke MB, Wit JM. Growth hormone - past, present and future. *Nature reviews Endocrinology.* 2018;14(5):285-300. doi:10.1038/nrendo.2018.22.
19. Pombo M, Maccario M, Seoane LM, Tovar S, Micic D, Ghigo E et al. Control and function of the GH-IGF-I axis in obesity. *Eat Weight Disord.* 2001;6(3 Suppl):22-7.
20. Bidlingmaier M, Strasburger CJ. Growth hormone. *Handb Exp Pharmacol.* 2010(195):187-200. doi:10.1007/978-3-540-79088-4_8.
21. Kojima M, Hosoda H, Date Y, Nakazato M, Matsuo H, Kangawa K. Ghrelin is a growth-hormone-releasing acylated peptide from stomach. *Nature.* 1999;402(6762):656-60. doi:10.1038/45230.
22. Al-Massadi O, Gabellieri E, Trujillo ML, Senaris R, Pagotto U, Pasquali R et al. Peripheral endocannabinoid system-mediated actions of rimonabant on growth hormone secretion are ghrelin-dependent. *J Neuroendocrinol.* 2010;22(11):1127-36. doi:10.1111/j.1365-2826.2010.02065.x.
23. Seoane LM, Tovar S, Baldelli R, Arvat E, Ghigo E, Casanueva FF et al. Ghrelin elicits a marked stimulatory effect on GH secretion in freely-moving rats. *European journal of endocrinology.* 2000;143(5):R7-9. doi:10.1530/eje.0.143r007.
24. Peino R, Baldelli R, Rodriguez-Garcia J, Rodriguez-Segade S, Kojima M, Kangawa K et al. Ghrelin-induced growth hormone secretion in humans. *European journal of endocrinology.* 2000;143(6):R11-4. doi:10.1530/eje.0.143r011.
25. Popovic V, Miljic D, Micic D, Damjanovic S, Arvat E, Ghigo E et al. Ghrelin main action on the regulation of growth hormone release is exerted at hypothalamic level. *The Journal of clinical endocrinology and metabolism.* 2003;88(7):3450-3. doi:10.1210/jc.2003-030211.
26. Sun Y, Wang P, Zheng H, Smith RG. Ghrelin stimulation of growth hormone release and appetite is mediated through the growth hormone secretagogue receptor. *Proceedings of the National Academy of Sciences of the United States of America.* 2004;101(13):4679-84. doi:10.1073/pnas.0305930101.
27. Dehkhoda F, Lee CMM, Medina J, Brooks AJ. The Growth Hormone Receptor: Mechanism of Receptor Activation, Cell Signaling, and Physiological Aspects. *Frontiers in endocrinology.* 2018;9:35. doi:10.3389/fendo.2018.00035.

28. Lu M, Flanagan JU, Langley RJ, Hay MP, Perry JK. Targeting growth hormone function: strategies and therapeutic applications. *Signal Transduct Target Ther.* 2019;4:3. doi:10.1038/s41392-019-0036-y.
29. Hu B, Li H, Zhang X. A Balanced Act: The Effects of GH-GHR-IGF1 Axis on Mitochondrial Function. *Front Cell Dev Biol.* 2021;9:630248. doi:10.3389/fcell.2021.630248.
30. Chhabra Y, Lee CMM, Muller AF, Brooks AJ. GHR signalling: Receptor activation and degradation mechanisms. *Molecular and cellular endocrinology.* 2021;520:111075. doi:10.1016/j.mce.2020.111075.
31. Luque RM, Kineman RD. Impact of obesity on the growth hormone axis: evidence for a direct inhibitory effect of hyperinsulinemia on pituitary function. *Endocrinology.* 2006;147(6):2754-63. doi:10.1210/en.2005-1549.
32. Steyn FJ, Xie TY, Huang L, Ngo ST, Veldhuis JD, Waters MJ et al. Increased adiposity and insulin correlates with the progressive suppression of pulsatile GH secretion during weight gain. *The Journal of endocrinology.* 2013;218(2):233-44. doi:10.1530/JOE-13-0084.
33. List EO, Sackmann-Sala L, Berryman DE, Funk K, Kelder B, Gosney ES et al. Endocrine parameters and phenotypes of the growth hormone receptor gene disrupted (GHR^{-/-}) mouse. *Endocrine reviews.* 2011;32(3):356-86. doi:10.1210/er.2010-0009.
34. Berryman DE, List EO, Sackmann-Sala L, Lubbers E, Munn R, Kopchick JJ. Growth hormone and adipose tissue: beyond the adipocyte. *Growth hormone & IGF research : official journal of the Growth Hormone Research Society and the International IGF Research Society.* 2011;21(3):113-23. doi:10.1016/j.ghir.2011.03.002.
35. Berryman DE, List EO, Palmer AJ, Chung MY, Wright-Piekarski J, Lubbers E et al. Two-year body composition analyses of long-lived GHR null mice. *The journals of gerontology Series A, Biological sciences and medical sciences.* 2010;65(1):31-40. doi:10.1093/gerona/glp175.
36. Piotrowska K, Borkowska SJ, Wiszniewska B, Laszczynska M, Sluczanska-Glabowska S, Havens AM et al. The effect of low and high plasma levels of insulin-like growth factor-1 (IGF-1) on the morphology of major organs: studies of Laron dwarf and bovine growth hormone transgenic (bGHTg) mice. *Histology and histopathology.* 2013;28(10):1325-36. doi:10.14670/HH-28.1325.
37. Chen WY, Wight DC, Wagner TE, Kopchick JJ. Expression of a mutated bovine growth hormone gene suppresses growth of transgenic mice. *Proceedings of the National Academy of Sciences of the United States of America.* 1990;87(13):5061-5. doi:10.1073/pnas.87.13.5061.
38. Brooks NE, Hjortebjerg R, Henry BE, List EO, Kopchick JJ, Berryman DE. Fibroblast growth factor 21, fibroblast growth factor receptor 1, and beta-Klotho expression in bovine growth hormone transgenic and growth hormone receptor knockout mice. *Growth hormone & IGF research : official journal of the Growth Hormone Research Society and the International IGF Research Society.* 2016;30-31:22-30. doi:10.1016/j.ghir.2016.08.003.
39. Sinha YN, Salocks CB, Vanderlaan WP. Prolactin and growth hormone secretion in chemically induced and genetically obese mice. *Endocrinology.* 1975;97(6):1386-93. doi:10.1210/endo-97-6-1386.
40. Pijl H, Langendonk JG, Burggraaf J, Frolich M, Cohen AF, Veldhuis JD et al. Altered neuroregulation of GH secretion in viscerally obese premenopausal women. *The Journal of clinical endocrinology and metabolism.* 2001;86(11):5509-15. doi:10.1210/jcem.86.11.8061.
41. Ozata M, Dieguez C, Casanueva FF. The inhibition of growth hormone secretion presented in obesity is not mediated by the high leptin levels: a study in human leptin deficiency patients. *The Journal of clinical endocrinology and metabolism.* 2003;88(1):312-6. doi:10.1210/jc.2002-020122.

42. Dichtel LE, Cordoba-Chacon J, Kineman RD. Growth hormone and insulin-like growth factor I regulation of nonalcoholic fatty liver disease. *The Journal of clinical endocrinology and metabolism*. 2022. doi:10.1210/clinem/dgac088.
43. Liu Z, Cordoba-Chacon J, Kineman RD, Cronstein BN, Muzumdar R, Gong Z et al. Growth Hormone Control of Hepatic Lipid Metabolism. *Diabetes*. 2016;65(12):3598-609. doi:10.2337/db16-0649.
44. Fan Y, Menon RK, Cohen P, Hwang D, Clemens T, DiGirolamo DJ et al. Liver-specific deletion of the growth hormone receptor reveals essential role of growth hormone signaling in hepatic lipid metabolism. *The Journal of biological chemistry*. 2009;284(30):19937-44. doi:10.1074/jbc.M109.014308.
45. Laron Z, Ginsberg S, Webb M. Nonalcoholic fatty liver in patients with Laron syndrome and GH gene deletion - preliminary report. *Growth hormone & IGF research : official journal of the Growth Hormone Research Society and the International IGF Research Society*. 2008;18(5):434-8. doi:10.1016/j.ghir.2008.03.003.
46. Ichikawa T, Hamasaki K, Ishikawa H, Ejima E, Eguchi K, Nakao K. Non-alcoholic steatohepatitis and hepatic steatosis in patients with adult onset growth hormone deficiency. *Gut*. 2003;52(6):914. doi:10.1136/gut.52.6.914.
47. Nishizawa H, Iguchi G, Murawaki A, Fukuoka H, Hayashi Y, Kaji H et al. Nonalcoholic fatty liver disease in adult hypopituitary patients with GH deficiency and the impact of GH replacement therapy. *European journal of endocrinology*. 2012;167(1):67-74. doi:10.1530/EJE-12-0252.
48. Adams LA, Feldstein A, Lindor KD, Angulo P. Nonalcoholic fatty liver disease among patients with hypothalamic and pituitary dysfunction. *Hepatology*. 2004;39(4):909-14. doi:10.1002/hep.20140.
49. Bredella MA, Schorr M, Dichtel LE, Gerweck AV, Young BJ, Woodmansee WW et al. Body Composition and Ectopic Lipid Changes With Biochemical Control of Acromegaly. *The Journal of clinical endocrinology and metabolism*. 2017;102(11):4218-25. doi:10.1210/jc.2017-01210.
50. Winhofer Y, Wolf P, Krssak M, Wolfsberger S, Tura A, Pacini G et al. No evidence of ectopic lipid accumulation in the pathophysiology of the acromegalic cardiomyopathy. *The Journal of clinical endocrinology and metabolism*. 2014;99(11):4299-306. doi:10.1210/jc.2014-2242.
51. Minniti ME, Pedrelli M, Vedin LL, Delbes AS, Denis RGP, Oorni K et al. Insights From Liver-Humanized Mice on Cholesterol Lipoprotein Metabolism and LXR-Agonist Pharmacodynamics in Humans. *Hepatology*. 2020;72(2):656-70. doi:10.1002/hep.31052.
52. Tatenos C, Kataoka M, Utoh R, Tachibana A, Itamoto T, Asahara T et al. Growth hormone-dependent pathogenesis of human hepatic steatosis in a novel mouse model bearing a human hepatocyte-repopulated liver. *Endocrinology*. 2011;152(4):1479-91. doi:10.1210/en.2010-0953.
53. Bartke A, Sun LY, Longo V. Somatotrophic signaling: trade-offs between growth, reproductive development, and longevity. *Physiological reviews*. 2013;93(2):571-98. doi:10.1152/physrev.00006.2012.
54. Vijayakumar A, Yakar S, Leroith D. The intricate role of growth hormone in metabolism. *Frontiers in endocrinology*. 2011;2:32. doi:10.3389/fendo.2011.00032.
55. Nielsen JH, Galsgaard ED, Moldrup A, Friedrichsen BN, Billestrup N, Hansen JA et al. Regulation of beta-cell mass by hormones and growth factors. *Diabetes*. 2001;50 Suppl 1:S25-9. doi:10.2337/diabetes.50.2007.s25.
56. Donato J, Jr., Wasinski F, Furigo IC, Metzger M, Frazao R. Central Regulation of Metabolism by Growth Hormone. *Cells*. 2021;10(1). doi:10.3390/cells10010129.

57. Furigo IC, Metzger M, Teixeira PD, Soares CR, Donato J, Jr. Distribution of growth hormone-responsive cells in the mouse brain. *Brain structure & function*. 2017;222(1):341-63. doi:10.1007/s00429-016-1221-1.
58. Sadagurski M, Landeryou T, Cady G, Kopchick JJ, List EO, Berryman DE et al. Growth hormone modulates hypothalamic inflammation in long-lived pituitary dwarf mice. *Aging cell*. 2015;14(6):1045-54. doi:10.1111/accel.12382.
59. Furigo IC, Teixeira PDS, de Souza GO, Couto GCL, Romero GG, Perello M et al. Growth hormone regulates neuroendocrine responses to weight loss via AgRP neurons. *Nature communications*. 2019;10(1):662. doi:10.1038/s41467-019-08607-1.
60. Bohlooly YM, Olsson B, Bruder CE, Linden D, Sjogren K, Bjursell M et al. Growth hormone overexpression in the central nervous system results in hyperphagia-induced obesity associated with insulin resistance and dyslipidemia. *Diabetes*. 2005;54(1):51-62. doi:10.2337/diabetes.54.1.51.
61. Quaresma PGF, Teixeira PDS, Furigo IC, Wasinski F, Couto GC, Frazao R et al. Growth hormone/STAT5 signaling in proopiomelanocortin neurons regulates glucoprivic hyperphagia. *Molecular and cellular endocrinology*. 2019;498:110574. doi:10.1016/j.mce.2019.110574.
62. Wasinski F, Furigo IC, Teixeira PDS, Ramos-Lobo AM, Peroni CN, Bartolini P et al. Growth Hormone Receptor Deletion Reduces the Density of Axonal Projections from Hypothalamic Arcuate Nucleus Neurons. *Neuroscience*. 2020;434:136-47. doi:10.1016/j.neuroscience.2020.03.037.
63. Zhong C, Song Y, Wang Y, Zhang T, Duan M, Li Y et al. Increased food intake in growth hormone-transgenic common carp (*Cyprinus carpio* L.) may be mediated by upregulating Agouti-related protein (AgRP). *General and comparative endocrinology*. 2013;192:81-8. doi:10.1016/j.ygcen.2013.03.024.
64. Freda PU, Reyes-Vidal C, Jin Z, Pugh M, Panigrahi SK, Bruce JN et al. Plasma Agouti-Related Protein Levels in Acromegaly and Effects of Surgical or Pegvisomant Therapy. *The Journal of clinical endocrinology and metabolism*. 2019;104(11):5453-61. doi:10.1210/jc.2019-01079.
65. Haffer KN. Effects of novel vaccines on weight loss in diet-induced-obese (DIO) mice. *J Anim Sci Biotechnol*. 2012;3(1):21. doi:10.1186/2049-1891-3-21.
66. Mekala KC, Tritos NA. Effects of recombinant human growth hormone therapy in obesity in adults: a meta analysis. *The Journal of clinical endocrinology and metabolism*. 2009;94(1):130-7. doi:10.1210/jc.2008-1357.
67. Pan CS, Weiss JJ, Fourman LT, Buckless C, Branch KL, Lee H et al. Effect of recombinant human growth hormone on liver fat content in young adults with nonalcoholic fatty liver disease. *Clinical endocrinology*. 2021;94(2):183-92. doi:10.1111/cen.14344.
68. Bredella MA, Gerweck AV, Lin E, Landa MG, Torriani M, Schoenfeld DA et al. Effects of GH on body composition and cardiovascular risk markers in young men with abdominal obesity. *The Journal of clinical endocrinology and metabolism*. 2013;98(9):3864-72. doi:10.1210/jc.2013-2063.
69. Altabas V, Zjadic-Rotkvic V. Anti-ghrelin antibodies in appetite suppression: recent advances in obesity pharmacotherapy. *Immunotargets Ther*. 2015;4:123-30. doi:10.2147/ITT.S60398.
70. Hansen JB, Arkhammar PO, Bodvarsdottir TB, Wahl P. Inhibition of insulin secretion as a new drug target in the treatment of metabolic disorders. *Curr Med Chem*. 2004;11(12):1595-615. doi:10.2174/0929867043365026.
71. Lustig RH, Hinds PS, Ringwald-Smith K, Christensen RK, Kaste SC, Schreiber RE et al. Octreotide therapy of pediatric hypothalamic obesity: a double-blind, placebo-controlled trial.

- The Journal of clinical endocrinology and metabolism. 2003;88(6):2586-92.
doi:10.1210/jc.2002-030003.
72. Al Massadi O, Lear PV, Muller TD, Lopez M, Dieguez C, Tschop MH et al. Review of novel aspects of the regulation of ghrelin secretion. *Curr Drug Metab*. 2014;15(4):398-413. doi:10.2174/1389200215666140505153723.
73. Zorrilla EP, Iwasaki S, Moss JA, Chang J, Otsuji J, Inoue K et al. Vaccination against weight gain. *Proceedings of the National Academy of Sciences of the United States of America*. 2006;103(35):13226-31. doi:10.1073/pnas.0605376103.
74. Vizcarra JA, Kirby JD, Kim SK, Galyean ML. Active immunization against ghrelin decreases weight gain and alters plasma concentrations of growth hormone in growing pigs. *Domest Anim Endocrinol*. 2007;33(2):176-89. doi:10.1016/j.domaniend.2006.05.005.
75. Andrade S, Pinho F, Ribeiro AM, Carreira M, Casanueva FF, Roy P et al. Immunization against active ghrelin using virus-like particles for obesity treatment. *Curr Pharm Des*. 2013;19(36):6551-8. doi:10.2174/13816128113199990506.
76. Takagi K, Legrand R, Asakawa A, Amitani H, Francois M, Tenuoune N et al. Anti-ghrelin immunoglobulins modulate ghrelin stability and its orexigenic effect in obese mice and humans. *Nature communications*. 2013;4:2685. doi:10.1038/ncomms3685.
77. AG; SCB. Phase I/IIa clinical trial with obese individuals shows no effect of CYT009-GhrQb on weight loss [webpage on the Internet] <http://www.cytos.ch/news/180/15/Phase-I-IIa-clinical-trial-with-obese-individuals-shows-no-effect-of-CYT009-GhrQb-on-weight-loss.html>. [Accessed January 3, 2015]. [updated November 7, 2006; cited January 3, 2015].
78. Lamers CB. Clinical and pathophysiological aspects of somatostatin and the gastrointestinal tract. *Acta Endocrinol Suppl (Copenh)*. 1987;286:19-25. doi:10.1530/acta.0.115s019.
79. Lustig RH, Greenway F, Velasquez-Mieyer P, Heimbürger D, Schumacher D, Smith D et al. A multicenter, randomized, double-blind, placebo-controlled, dose-finding trial of a long-acting formulation of octreotide in promoting weight loss in obese adults with insulin hypersecretion. *Int J Obes (Lond)*. 2006;30(2):331-41. doi:10.1038/sj.ijo.0803074.
80. Boehm BO, Lustig RH. Use of somatostatin receptor ligands in obesity and diabetic complications. *Best Pract Res Clin Gastroenterol*. 2002;16(3):493-509. doi:10.1053/bega.2002.0320.
81. Lustig RH, Rose SR, Burghen GA, Velasquez-Mieyer P, Broome DC, Smith K et al. Hypothalamic obesity caused by cranial insult in children: altered glucose and insulin dynamics and reversal by a somatostatin agonist. *J Pediatr*. 1999;135(2 Pt 1):162-8. doi:10.1016/s0022-3476(99)70017-x.
82. Velasquez-Mieyer PA, Cowan PA, Arheart KL, Buffington CK, Spencer KA, Connelly BE et al. Suppression of insulin secretion is associated with weight loss and altered macronutrient intake and preference in a subset of obese adults. *International journal of obesity and related metabolic disorders : journal of the International Association for the Study of Obesity*. 2003;27(2):219-26. doi:10.1038/sj.ijo.802227.
83. Velasquez-Mieyer PA, Umpierrez GE, Lustig RH, Cashion AK, Cowan PA, Christensen M et al. Race affects insulin and GLP-1 secretion and response to a long-acting somatostatin analogue in obese adults. *International journal of obesity and related metabolic disorders : journal of the International Association for the Study of Obesity*. 2004;28(2):330-3. doi:10.1038/sj.ijo.0802561.
84. Le Roith D. Seminars in medicine of the Beth Israel Deaconess Medical Center. Insulin-like growth factors. *The New England journal of medicine*. 1997;336(9):633-40. doi:10.1056/NEJM199702273360907.

85. Aguirre GA, De Ita JR, de la Garza RG, Castilla-Cortazar I. Insulin-like growth factor-1 deficiency and metabolic syndrome. *Journal of translational medicine*. 2016;14:3. doi:10.1186/s12967-015-0762-z.
86. Firth SM, Baxter RC. Cellular actions of the insulin-like growth factor binding proteins. *Endocrine reviews*. 2002;23(6):824-54. doi:10.1210/er.2001-0033.
87. Rotwein P. Diversification of the insulin-like growth factor 1 gene in mammals. *PloS one*. 2017;12(12):e0189642. doi:10.1371/journal.pone.0189642.
88. Adams TE, Epa VC, Garrett TP, Ward CW. Structure and function of the type 1 insulin-like growth factor receptor. *Cell Mol Life Sci*. 2000;57(7):1050-93. doi:10.1007/PL00000744.
89. Bano N, Hossain MM, Bhat AQ, Ayaz MO, Kumari M, Sandhu P et al. Analyzing structural differences between insulin receptor (IR) and IGF1R for designing small molecule allosteric inhibitors of IGF1R as novel anti-cancer agents. *Growth hormone & IGF research : official journal of the Growth Hormone Research Society and the International IGF Research Society*. 2020;55:101343. doi:10.1016/j.ghir.2020.101343.
90. Jones JI, Clemmons DR. Insulin-like growth factors and their binding proteins: biological actions. *Endocrine reviews*. 1995;16(1):3-34. doi:10.1210/edrv-16-1-3.
91. Franco C, Bengtsson BA, Johannsson G. The GH/IGF-1 Axis in Obesity: Physiological and Pathological Aspects. *Metabolic syndrome and related disorders*. 2006;4(1):51-6. doi:10.1089/met.2006.4.51.
92. Kreitschmann-Andermahr I, Suarez P, Jennings R, Evers N, Brabant G. GH/IGF-I regulation in obesity--mechanisms and practical consequences in children and adults. *Hormone research in paediatrics*. 2010;73(3):153-60. doi:10.1159/000284355.
93. Paszynska E, Dmierzak-Weglarz M, Slopian A, Tyszkiewicz-Nwafor M, Rajewski A. Salivary and serum insulin-like growth factor (IGF-1) assays in anorexic patients. *The world journal of biological psychiatry : the official journal of the World Federation of Societies of Biological Psychiatry*. 2016;17(8):615-21. doi:10.3109/15622975.2015.1023356.
94. Rasmussen MH, Frystyk J, Andersen T, Breum L, Christiansen JS, Hilsted J. The impact of obesity, fat distribution, and energy restriction on insulin-like growth factor-1 (IGF-1), IGF-binding protein-3, insulin, and growth hormone. *Metabolism: clinical and experimental*. 1994;43(3):315-9. doi:10.1016/0026-0495(94)90099-x.
95. Kunitomi M, Wada J, Takahashi K, Tsuchiyama Y, Mimura Y, Hida K et al. Relationship between reduced serum IGF-I levels and accumulation of visceral fat in Japanese men. *International journal of obesity and related metabolic disorders : journal of the International Association for the Study of Obesity*. 2002;26(3):361-9. doi:10.1038/sj.ijo.0801899.
96. Oh J, Kim JY, Park S, Youn JC, Son NH, Shin DJ et al. The relationship between insulin-like growth factor-1 and metabolic syndrome, independent of adiponectin. *Clinica chimica acta; international journal of clinical chemistry*. 2012;413(3-4):506-10. doi:10.1016/j.cca.2011.11.015.
97. Mallea-Gil MS, Ballarino MC, Spiraquis A, Iriarte M, Kura M, Gimenez S et al. IGF-1 levels in different stages of liver steatosis and its association with metabolic syndrome. *Acta gastroenterologica Latinoamericana*. 2012;42(1):20-6.
98. Conchillo M, de Knegt RJ, Payeras M, Quiroga J, Sangro B, Herrero JI et al. Insulin-like growth factor I (IGF-I) replacement therapy increases albumin concentration in liver cirrhosis: results of a pilot randomized controlled clinical trial. *Journal of hepatology*. 2005;43(4):630-6. doi:10.1016/j.jhep.2005.03.025.
99. Mauras N, O'Brien KO, Welch S, Rini A, Helgeson K, Vieira NE et al. Insulin-like growth factor I and growth hormone (GH) treatment in GH-deficient humans: differential effects on protein, glucose, lipid, and calcium metabolism. *The Journal of clinical endocrinology and metabolism*. 2000;85(4):1686-94. doi:10.1210/jcem.85.4.6541.

100. Clemmons DR. Involvement of insulin-like growth factor-I in the control of glucose homeostasis. *Current opinion in pharmacology*. 2006;6(6):620-5. doi:10.1016/j.coph.2006.08.006.
101. Fernandez AM, Kim JK, Yakar S, Dupont J, Hernandez-Sanchez C, Castle AL et al. Functional inactivation of the IGF-I and insulin receptors in skeletal muscle causes type 2 diabetes. *Genes & development*. 2001;15(15):1926-34. doi:10.1101/gad.908001.
102. Heron-Milhavet L, Haluzik M, Yakar S, Gavrilova O, Pack S, Jou WC et al. Muscle-specific overexpression of CD36 reverses the insulin resistance and diabetes of MKR mice. *Endocrinology*. 2004;145(10):4667-76. doi:10.1210/en.2003-1543.
103. Succurro E, Andreozzi F, Marini MA, Lauro R, Hribal ML, Perticone F et al. Low plasma insulin-like growth factor-1 levels are associated with reduced insulin sensitivity and increased insulin secretion in nondiabetic subjects. *Nutrition, metabolism, and cardiovascular diseases : NMCD*. 2009;19(10):713-9. doi:10.1016/j.numecd.2008.12.011.
104. Sandhu MS, Heald AH, Gibson JM, Cruickshank JK, Dunger DB, Wareham NJ. Circulating concentrations of insulin-like growth factor-I and development of glucose intolerance: a prospective observational study. *Lancet*. 2002;359(9319):1740-5. doi:10.1016/S0140-6736(02)08655-5.
105. Mannino GC, Greco A, De Lorenzo C, Andreozzi F, Marini MA, Perticone F et al. A fasting insulin-raising allele at IGF1 locus is associated with circulating levels of IGF-1 and insulin sensitivity. *PloS one*. 2013;8(12):e85483. doi:10.1371/journal.pone.0085483.
106. Rietveld I, Janssen JA, van Rossum EF, Houwing-Duistermaat JJ, Rivadeneira F, Hofman A et al. A polymorphic CA repeat in the IGF-I gene is associated with gender-specific differences in body height, but has no effect on the secular trend in body height. *Clinical endocrinology*. 2004;61(2):195-203. doi:10.1111/j.1365-2265.2004.02078.x.
107. Vaessen N, Heutink P, Janssen JA, Witteman JC, Testers L, Hofman A et al. A polymorphism in the gene for IGF-I: functional properties and risk for type 2 diabetes and myocardial infarction. *Diabetes*. 2001;50(3):637-42. doi:10.2337/diabetes.50.3.637.
108. Russell-Jones DL, Bates AT, Umpleby AM, Hennessy TR, Bowes SB, Hopkins KD et al. A comparison of the effects of IGF-I and insulin on glucose metabolism, fat metabolism and the cardiovascular system in normal human volunteers. *European journal of clinical investigation*. 1995;25(6):403-11. doi:10.1111/j.1365-2362.1995.tb01721.x.
109. Boulware SD, Tamborlane WV, Rennert NJ, Gesundheit N, Sherwin RS. Comparison of the metabolic effects of recombinant human insulin-like growth factor-I and insulin. Dose-response relationships in healthy young and middle-aged adults. *The Journal of clinical investigation*. 1994;93(3):1131-9. doi:10.1172/JCI117065.
110. Moses AC, Young SC, Morrow LA, O'Brien M, Clemmons DR. Recombinant human insulin-like growth factor I increases insulin sensitivity and improves glycemic control in type II diabetes. *Diabetes*. 1996;45(1):91-100. doi:10.2337/diab.45.1.91.
111. Baker J, Liu JP, Robertson EJ, Efstratiadis A. Role of insulin-like growth factors in embryonic and postnatal growth. *Cell*. 1993;75(1):73-82.
112. Berryman DE, Glad CA, List EO, Johannsson G. The GH/IGF-1 axis in obesity: pathophysiology and therapeutic considerations. *Nature reviews Endocrinology*. 2013;9(6):346-56. doi:10.1038/nrendo.2013.64.
113. Scott RA, Lagou V, Welch RP, Wheeler E, Montasser ME, Luan J et al. Large-scale association analyses identify new loci influencing glycemic traits and provide insight into the underlying biological pathways. *Nature genetics*. 2012;44(9):991-1005. doi:10.1038/ng.2385.
114. O'Connell T, Clemmons DR. IGF-I/IGF-binding protein-3 combination improves insulin resistance by GH-dependent and independent mechanisms. *The Journal of clinical endocrinology and metabolism*. 2002;87(9):4356-60. doi:10.1210/jc.2002-020343.

115. Yakar S, Liu JL, Fernandez AM, Wu Y, Schally AV, Frystyk J et al. Liver-specific igf-1 gene deletion leads to muscle insulin insensitivity. *Diabetes*. 2001;50(5):1110-8. doi:10.2337/diabetes.50.5.1110.
116. Yakar S, Setser J, Zhao H, Stannard B, Haluzik M, Glatt V et al. Inhibition of growth hormone action improves insulin sensitivity in liver IGF-1-deficient mice. *The Journal of clinical investigation*. 2004;113(1):96-105. doi:10.1172/JCI17763.
117. Mauras N, Beaufre B. Recombinant human insulin-like growth factor-I enhances whole body protein anabolism and significantly diminishes the protein catabolic effects of prednisone in humans without a diabetogenic effect. *The Journal of clinical endocrinology and metabolism*. 1995;80(3):869-74. doi:10.1210/jcem.80.3.7533772.
118. Turkalj I, Keller U, Ninnis R, Vosmeer S, Stauffacher W. Effect of increasing doses of recombinant human insulin-like growth factor-I on glucose, lipid, and leucine metabolism in man. *The Journal of clinical endocrinology and metabolism*. 1992;75(5):1186-91. doi:10.1210/jcem.75.5.1430077.
119. Yuen KC, Dunger DB. Therapeutic aspects of growth hormone and insulin-like growth factor-I treatment on visceral fat and insulin sensitivity in adults. *Diabetes, obesity & metabolism*. 2007;9(1):11-22. doi:10.1111/j.1463-1326.2006.00591.x.
120. Bondy C, Werner H, Roberts CT, Jr., LeRoith D. Cellular pattern of type-I insulin-like growth factor receptor gene expression during maturation of the rat brain: comparison with insulin-like growth factors I and II. *Neuroscience*. 1992;46(4):909-23. doi:10.1016/0306-4522(92)90193-6.
121. Piriz J, Muller A, Trejo JL, Torres-Aleman I. IGF-I and the aging mammalian brain. *Experimental gerontology*. 2011;46(2-3):96-9. doi:10.1016/j.exger.2010.08.022.
122. Deak F, Sonntag WE. Aging, synaptic dysfunction, and insulin-like growth factor (IGF)-1. *The journals of gerontology Series A, Biological sciences and medical sciences*. 2012;67(6):611-25. doi:10.1093/gerona/gls118.
123. Muzumdar RH, Ma X, Fishman S, Yang X, Atzmon G, Vuguin P et al. Central and opposing effects of IGF-I and IGF-binding protein-3 on systemic insulin action. *Diabetes*. 2006;55(10):2788-96. doi:10.2337/db06-0318.
124. Huffman DM, Farias Quipildor G, Mao K, Zhang X, Wan J, Apontes P et al. Central insulin-like growth factor-1 (IGF-1) restores whole-body insulin action in a model of age-related insulin resistance and IGF-1 decline. *Aging cell*. 2016;15(1):181-6. doi:10.1111/acel.12415.
125. Fujita S, Honda K, Yamaguchi M, Fukuzo S, Saneyasu T, Kamisoyama H. Role of Insulin-like Growth Factor-1 in the Central Regulation of Feeding Behavior in Chicks. *The journal of poultry science*. 2019;56(4):270-6. doi:10.2141/jpsa.0180127.
126. Fujita S, Honda K, Hiramoto D, Gyu M, Okuda M, Nakayama S et al. Central and peripheral administrations of insulin-like growth factor-1 suppress food intake in chicks. *Physiology & behavior*. 2017;179:308-12. doi:10.1016/j.physbeh.2017.07.001.
127. Lu H, Martinez-Nieves B, Lapanowski K, Dunbar J. Intracerebroventricular insulin-like growth factor-1 decreases feeding in diabetic rats. *Endocrine*. 2001;14(3):349-52. doi:10.1385/ENDO:14:3:349.
128. Ohlsson C, Mohan S, Sjogren K, Tivesten A, Isgaard J, Isaksson O et al. The role of liver-derived insulin-like growth factor-I. *Endocrine reviews*. 2009;30(5):494-535. doi:10.1210/er.2009-0010.
129. Backeljauw PF, Underwood LE. Therapy for 6.5-7.5 years with recombinant insulin-like growth factor I in children with growth hormone insensitivity syndrome: a clinical research center study. *The Journal of clinical endocrinology and metabolism*. 2001;86(4):1504-10. doi:10.1210/jcem.86.4.7381.

130. Azcona C, Preece MA, Rose SJ, Fraser N, Rappaport R, Ranke MB et al. Growth response to rhIGF-I 80 microg/kg twice daily in children with growth hormone insensitivity syndrome: relationship to severity of clinical phenotype. *Clinical endocrinology*. 1999;51(6):787-92. doi:10.1046/j.1365-2265.1999.00887.x.
131. Ranke MB, Savage MO, Chatelain PG, Preece MA, Rosenfeld RG, Wilton P. Long-term treatment of growth hormone insensitivity syndrome with IGF-I. Results of the European Multicentre Study. The Working Group on Growth Hormone Insensitivity Syndromes. *Hormone research*. 1999;51(3):128-34. doi:10.1159/000023345.
132. Clemmons DR, Moses AC, McKay MJ, Sommer A, Rosen DM, Ruckle J. The combination of insulin-like growth factor I and insulin-like growth factor-binding protein-3 reduces insulin requirements in insulin-dependent type 1 diabetes: evidence for in vivo biological activity. *The Journal of clinical endocrinology and metabolism*. 2000;85(4):1518-24. doi:10.1210/jcem.85.4.6559.
133. Guevara-Aguirre J, Vasconez O, Martinez V, Martinez AL, Rosenbloom AL, Diamond FB, Jr. et al. A randomized, double blind, placebo-controlled trial on safety and efficacy of recombinant human insulin-like growth factor-I in children with growth hormone receptor deficiency. *The Journal of clinical endocrinology and metabolism*. 1995;80(4):1393-8. doi:10.1210/jcem.80.4.7536209.
134. Haywood NJ, Slater TA, Matthews CJ, Wheatcroft SB. The insulin like growth factor and binding protein family: Novel therapeutic targets in obesity & diabetes. *Molecular metabolism*. 2019;19:86-96. doi:10.1016/j.molmet.2018.10.008.

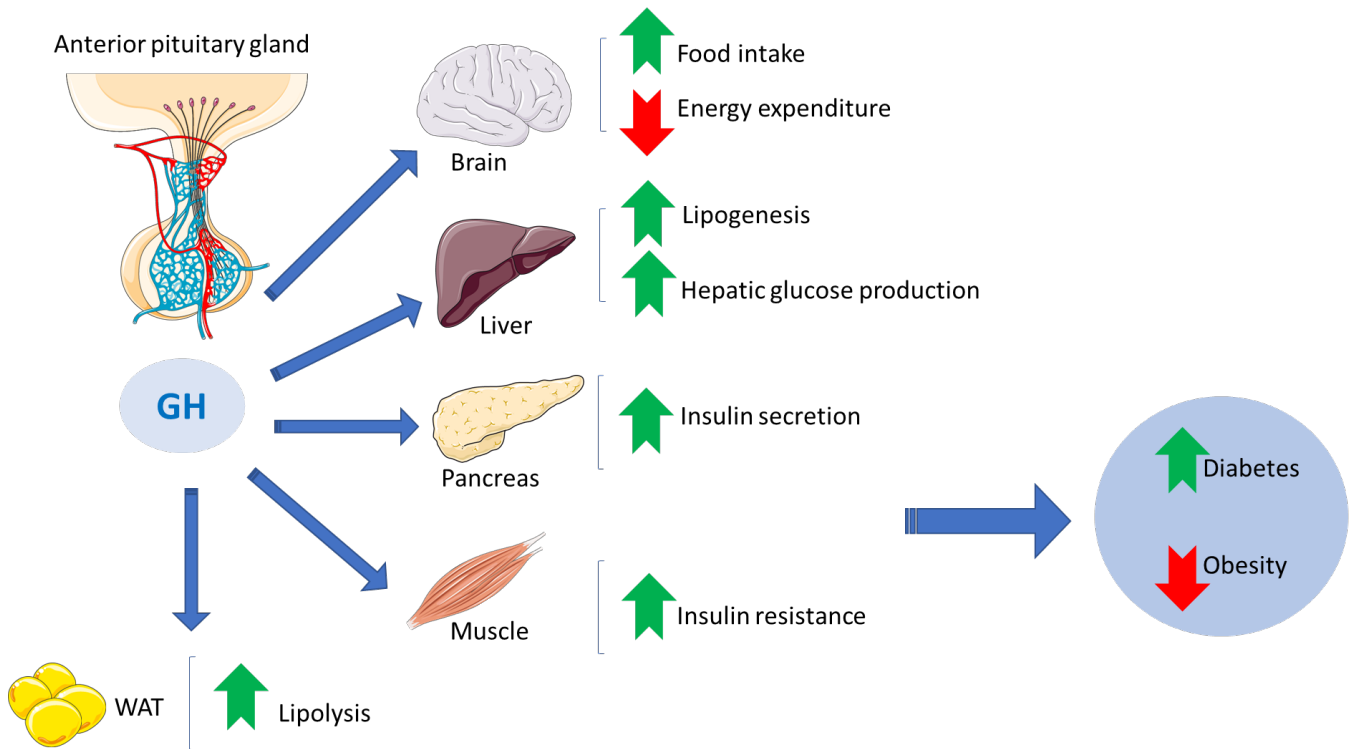


Figure 1: Description of the metabolic actions elicited by GH. GH is released from the pituitary as a potent lipolytic agent however decreases insulin sensitivity and triggers hepatic glucose production, in turn leading to a diabetogenic state. Abbreviations used: GH: growth hormone; WAT: white adipose tissue

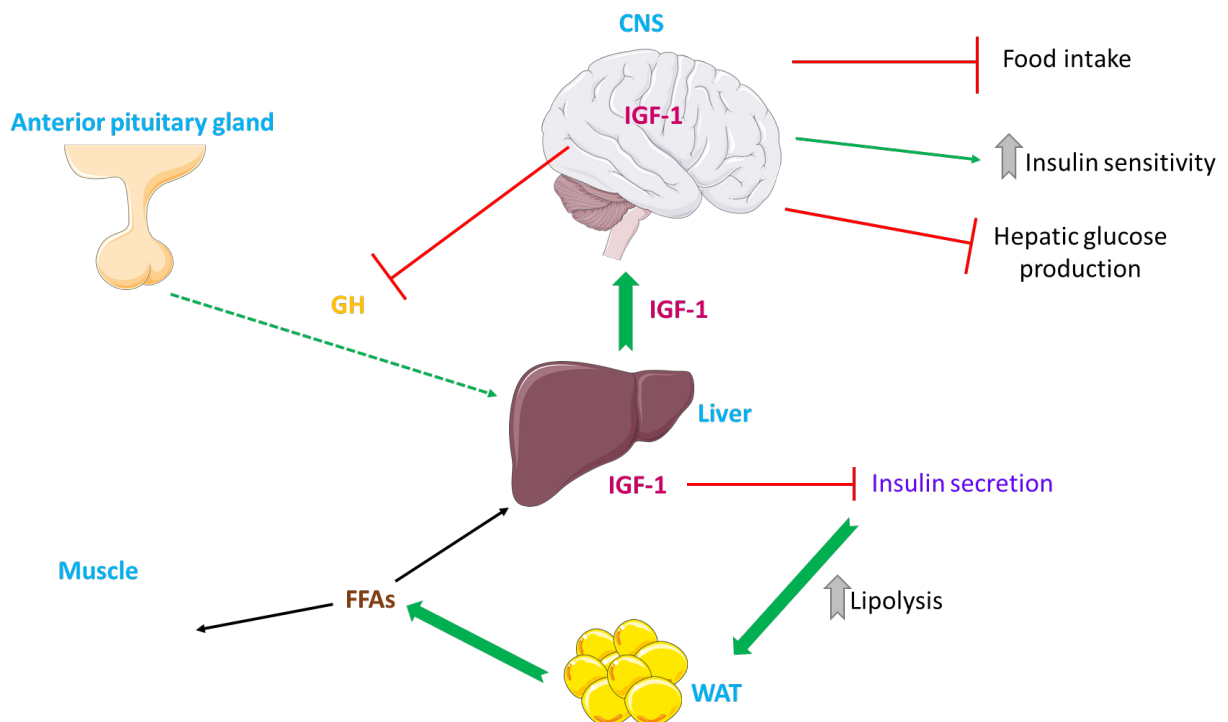


Figure 2: Description of the metabolic actions elicited by IGF-1. IGF-1 is released mainly from the liver and improves insulin sensitivity by suppression of insulin secretion, in turn leading to augmented lipolysis in adipose tissue and promotion of NEFA use in muscle and liver. Abbreviations used: CNS: central nervous system; GH: growth hormone; IGF-1: insulin growth factor-1; FFAs: free fatty acids; WAT: white adipose tissue.