



**HAL**  
open science

**N° de poster: P10.05 Globus Pallidus Contribution to  
Motor Behaviour in Normal and Parkinson's Disease  
States: Optogenetic Studies in murine models**

Abdel-Moultalib Ouagazzal, Sonia Di Bisceglie Caballero, Aurelia Ces,  
Martine Liberge, Frederic Ambroggi, Marianne Amalric

► **To cite this version:**

Abdel-Moultalib Ouagazzal, Sonia Di Bisceglie Caballero, Aurelia Ces, Martine Liberge, Frederic Ambroggi, et al.. N° de poster: P10.05 Globus Pallidus Contribution to Motor Behaviour in Normal and Parkinson's Disease States: Optogenetic Studies in murine models. 6th World Parkinson Congress 2023 (WPC 2023), Jul 2023, Barcelona (SPAIN), Spain. hal-04234909

**HAL Id: hal-04234909**

**<https://hal.science/hal-04234909>**

Submitted on 23 Oct 2023

**HAL** is a multi-disciplinary open access archive for the deposit and dissemination of scientific research documents, whether they are published or not. The documents may come from teaching and research institutions in France or abroad, or from public or private research centers.

L'archive ouverte pluridisciplinaire **HAL**, est destinée au dépôt et à la diffusion de documents scientifiques de niveau recherche, publiés ou non, émanant des établissements d'enseignement et de recherche français ou étrangers, des laboratoires publics ou privés.

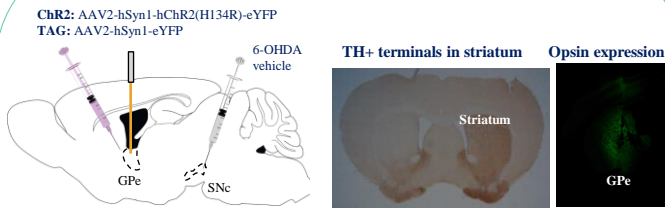
# Globus Pallidus Contribution to Motor Behaviour in Normal and Parkinson's Disease States: Optogenetic Studies in Murine Models

## INTRODUCTION

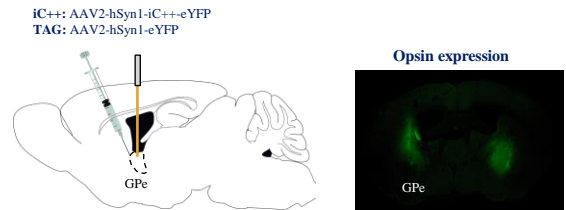
Excessive inhibition of external globus pallidus (GPe) by striatal GABAergic neurons is considered a central mechanism contributing to motor symptoms of Parkinson's disease (PD). While electrophysiological investigations in animal models of PD provide support for this view, behavioural studies assessing beneficial effects of global GPe stimulation in the context of dopamine (DA) depletion are scarce and the reported results are controversial. Here, we used an optogenetic approach and the standard unilateral 6-hydroxydopamine (6-OHDA) nigrostriatal dopamine (DA) lesion model of PD to assess beneficial effects of GPe stimulation on motor deficits in mice. The behavioural effects of GPe optogenetic inhibition were also studied in normal mice under the same testing conditions to verify whether reduced GPe activity reproduces the typical motor deficits of DA lesion in rodents.

## METHODS & RESULTS

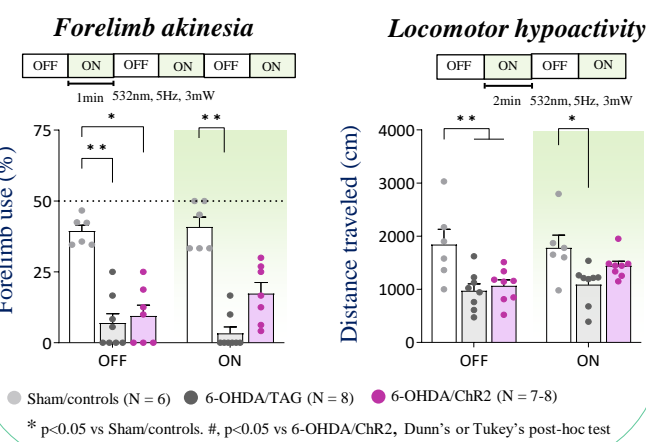
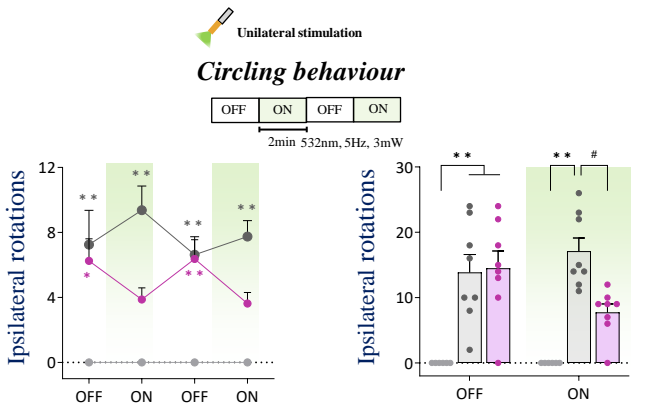
### Hemiparkinsonian mice



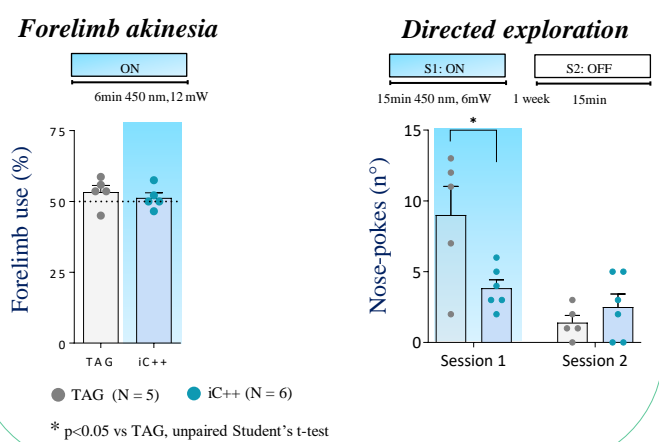
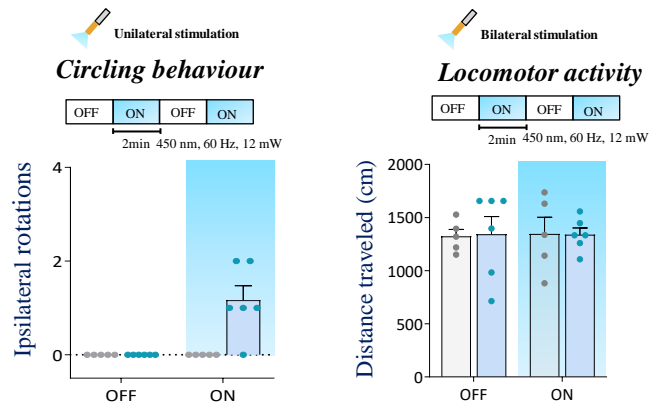
### Intact mice



### GPe Photostimulation



### GPe Photoinhibition



## CONCLUSION

- GPe photostimulation restores a range of motor deficits in 6-OHDA-lesioned mice (ipsilateral circling, forelimb akinesia and locomotor hypoactivity).
- GPe photoinhibition in normal mice has no impact on locomotor behaviour but impairs exploration directed towards salient spatial cues (nose-poke holes).
- In DA-depleted state, GPe plays a more important role in the development of motor deficits.

*GPe is a promising target for neuromodulatory restoration of motor deficits in PD*