



HAL
open science

Acetylcholine and spinal locomotor networks: The insider

Théo Mille, Camille Quilgars, Jean-rené Cazalets, Sandrine Bertrand

► **To cite this version:**

Théo Mille, Camille Quilgars, Jean-rené Cazalets, Sandrine Bertrand. Acetylcholine and spinal locomotor networks: The insider. *Physiological Reports*, 2021, 9 (3), <10.14814/phy2.14736>. <hal-04234706>

HAL Id: hal-04234706

<https://hal.science/hal-04234706v1>

Submitted on 10 Oct 2023

HAL is a multi-disciplinary open access archive for the deposit and dissemination of scientific research documents, whether they are published or not. The documents may come from teaching and research institutions in France or abroad, or from public or private research centers.

L'archive ouverte pluridisciplinaire **HAL**, est destinée au dépôt et à la diffusion de documents scientifiques de niveau recherche, publiés ou non, émanant des établissements d'enseignement et de recherche français ou étrangers, des laboratoires publics ou privés.



HAL Authorization

INVITED REVIEW**Acetylcholine and spinal locomotor networks: The insider**Théo Mille | Camille Quilgars | Jean-René Cazalets  | Sandrine S. Bertrand 

Université de Bordeaux, CNRS UMR
5287, INCIA, Bordeaux, France

Correspondence

Sandrine S. Bertrand. Université de
Bordeaux CNRS UMR 5287, INCIA,
Zone nord, Bat 2, 2e étage, 146, rue Leo
Saignât, 33076 Bordeaux, France.
Email: sandrine.bertrand@u-bordeaux.fr

Funding information

International Foundation for Research in
Paraplegia

Abstract

This article aims to review studies that have investigated the role of neurons that use the transmitter acetylcholine (ACh) in controlling the operation of locomotor neural networks within the spinal cord. This cholinergic system has the particularity of being completely intraspinal. We describe the different effects exerted by spinal cholinergic neurons on locomotor circuitry by the pharmacological activation or blockade of this propriospinal system, as well as describing its different cellular and subcellular targets. Through the activation of one ionotropic receptor, the nicotinic receptor, and five metabotropic receptors, the M1 to M5 muscarinic receptors, the cholinergic system exerts a powerful control both on synaptic transmission and locomotor network neuron excitability. Although tremendous advances have been made in our understanding of the spinal cholinergic system's involvement in the physiology and pathophysiology of locomotor networks, gaps still remain, including the precise role of the different subtypes of cholinergic neurons as well as their pre- and postsynaptic partners. Improving our knowledge of the propriospinal cholinergic system is of major relevance to finding new cellular targets and therapeutics in countering the debilitating effects of neurodegenerative diseases and restoring motor functions after spinal cord injury.

1 | INTRODUCTION

In the spinal cord, to generate locomotor activity, neurons are organized into highly specialized networks called central pattern generators (CPGs), which are endowed with the ability to generate in an autonomous manner both the rhythm itself and the pattern (the precise sequence of muscular activation) of locomotor activity. The motoneurons (MNs) innervating the various effector muscles receive this central command and convert it into contractions through the neuromuscular junctions.

To enable the continual adaptation of the motor command to external and internal demands, both CPG neurons and MNs are targeted by sensory, intraspinal, and supraspinal synaptic inputs that are extremely diverse in terms of

neurochemical phenotype. Classically, a distinction has been made between neurotransmitters that sustain fast chemical transmission between neurons through the activation of ion channel receptors: glutamate, GABA and glycine, and neuromodulators: monoamines, acetylcholine, peptides... whose binding to metabotropic receptors activates intracellular second messenger cascades leading to delayed and prolonged postsynaptic responses. It is now well acknowledged that this distinction is not so clear, with many neuroactive compounds being capable of activating both ionotropic and metabotropic receptors simultaneously. An impressive amount of work has been done to assess the role of the different neurotransmitter/neuromodulatory systems in the physiology and pathophysiology of spinal locomotor networks (for reviews see for examples: Garcia-Campmany et al., 2010; Jordan et al., 2008;

This is an open access article under the terms of the Creative Commons Attribution License, which permits use, distribution and reproduction in any medium, provided the original work is properly cited.

© 2021 The Authors. *Physiological Reports* published by Wiley Periodicals LLC on behalf of The Physiological Society and the American Physiological Society

Katz, 1995; Kiehn, 2016; Miles & Sillar, 2011; Rekling et al., 2000; Sharples et al., 2014).

The goal of this article was to review the cholinergic system that controls spinal locomotor networks, which is a neuromodulatory system that has the particularity of being completely intraspinal—all cholinergic neurons that connect to spinal motor networks reside within the spinal cord. This is in sharp contrast to the monoaminergic system, for example, whose neurons are located mostly in supraspinal areas and exert a major neuromodulatory control of spinal circuitry through descending pathways.

2 | CHOLINERGIC SYSTEMS

Acetylcholine (ACh), the first chemical transmitter shown to be released by neurons, is produced from acetyl-CoA and choline by the enzyme choline acetyltransferase (ChAT) and is loaded into synaptic vesicles by the vesicular acetylcholine transporter (VAcHT). One characteristic of ACh is its very fast degradation after release by the enzyme acetylcholinesterase (AChE), thereby limiting the transmitter's accumulation in the synaptic cleft. Cholinergic neurons are spread in diverse nuclei throughout the central nervous system (CNS) such as the pedunculopontine and laterodorsal tegmental areas, medial habenula, basal forebrain, and the spinal cord. Acetylcholine is implied in multiple nervous functions such as arousal, sleep cycle regulation, learning and memory, sensory integration, and motor control (for reviews see for examples: Haam & Yakel, 2017; Miles & Sillar, 2011; Picciotto et al., 2012; Thiele & Bellgrove, 2018; Umana et al., 2017). Alterations in cholinergic systems have been linked to numerous nervous disorders including Alzheimer and Parkinson's diseases, addiction, biological rhythm perturbation, and depression (for reviews see for examples: Dulawa & Janowsky, 2018; Ferreira-Vieira et al., 2016; Picciotto et al., 2012; Ztaou & Amalric, 2019).

The physiological actions of ACh are mediated by two functionally different types of receptors: one ionotropic receptor, the nicotinic receptor (nAChR) permeant to cations (Zoli et al., 2014) and five types of metabotropic receptors,

the muscarinic receptors (mAChRs; M1 to M5). The latter trigger opposing responses in target neurons according to the G-protein subtype they activate, with M1, M3, and M5 coupled to $G_{q/11}$ and M2–M4 to G_i (Brown, 2010).

3 | CHOLINERGIC NEURONS IN THE SPINAL CORD

The anatomical identification of spinal neurons that use ACh as a neurotransmitter was originally achieved by histological or immunohistological detection of the different proteins involved in ACh metabolism (ChAT, VAcHT, and AChE; Anglister et al., 2008; Arvidsson et al., 1997; Barber et al., 1984; Li et al., 1995). More recently, reporter transgenic mice expressing enhanced green fluorescent protein under the control of the ChAT promoter (ChAT-eGFP mice) have enabled the direct visualization of spinal cholinergic neurons (Tallini et al., 2006). The most abundant class of spinal cholinergic cells comprises somatic MNs located ventrally and extending from the cervical to sacral cord segments (Figure 1). In the spinal cord of mammals, small cholinergic neurons scattered around the central canal (lamina X) and in the superficial laminae of the dorsal horn are also found in all spinal segments, as well as large cell body neurons located at the border between the dorsal and ventral part of the cord in lamina VII (the partition cells). During locomotion, it has been shown that in addition to MNs, both partition cells and small interneurons of lamina X are active in the L3–S1 segments of the cat spinal cord (Huang et al., 2000).

In the mammalian spinal thoracolumbar and sacral segments, these four types of cholinergic neurons are intermingled with cholinergic preganglionic neurons of the autonomic nervous system (ANS) that send their axon in the ventral roots of the spinal cord to synapse with postganglionic neurons. While parasympathetic preganglionic neurons are located in the brainstem and sacral segments, the sympathetic preganglionic neurons (SPNs) span from the first thoracic (T1) to the second or third lumbar segments (L2–L3) in rodents and humans (Barber et al., 1984; Deuchars & Lall, 2015; Krassioukov et al., 1998). Figure 1 shows the three different

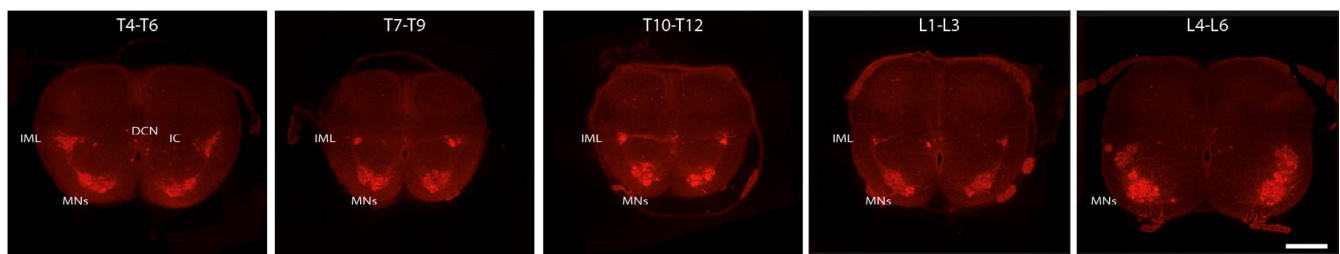


FIGURE 1 Locations of spinal cholinergic neurons. Spinal cord immunofluorescence labeling for choline acetyltransferase (ChAT, lighter red staining) at different indicated thoraco-lumbar (L) levels. IML: intermediolateral column, MNs: motoneurons, DCN: dorsal commissural nucleus, IC: intercalated nucleus. Calibration bar: 100 μ m

subpopulations of SPNs distributed in the intermediolateral nucleus (IML SPNs), the intercalated nucleus (IN), and in the region above the central canal (the dorsal commissural nucleus, DCN) in thoracic segments, but not in the caudal lumbar segments.

4 | CHOLINERGIC NEUROMODULATORY EFFECTS ON SPINAL LOCOMOTOR NETWORKS

As previously mentioned, the source of ACh in the spinal cord appears to be purely intraspinal. None of the descending pathways originating from supraspinal structures that project to the spinal cord have been shown to be cholinergic (Rye et al., 1988; Sherriff et al., 1991; VanderHorst & Ulfhake, 2006). Moreover, spinal cholinergic synapses and their associated receptors have been found to be relatively preserved after a spinal cord injury (SCI), further pointing to their spinal origin (Kanazawa et al., 1979; Kayaalp & Neff, 1980; Vulovic et al., 2018). Although cholinergic neurons are present in all spinal segments, there is no direct evidence as to whether cholinergic modulation occurs at the segmental level on spinal locomotor neurons. In contrast, cholinergic intersegmental interactions have been identified. Cholinergic neurons that connect monosynaptically with MNs innervating limb quadriceps muscle have been found throughout the T11-L6 spinal segments (Stepien et al., 2010). Moreover, ascending cholinergic inputs arising from the sacral and thoracolumbar part of the cord have also been reported (Anglister et al., 2017; Carlin et al., 2006; Finkel et al., 2014).

4.1 | Nicotinic effects in locomotor spinal networks

In the spinal cord, nAChRs are highly expressed, especially in the dorsal part where they control the integration of innocuous and nociceptive inputs (for review see Naser & Kuner, 2018). In the ventral spinal cord, MNs have been shown to be depolarized by nAChR activation in numerous animal models (Blake et al., 1987; Ogier et al., 2004; Perrins & Roberts, 1994; Quinlan & Buchanan, 2008). In addition to their direct excitatory effects on MNs, nAChRs are involved in a very particular function in spinal motor networks, namely recurrent inhibitory feedback onto MNs. For this, MN axons send local collateral branches to synapse with glycinergic neurons, the Renshaw cells, which in turn synapse back onto MNs. When MNs are active, the release of ACh (as well as the co-release of glutamate (Mentis et al., 2005)) and the subsequent activation of specific subtypes of nAChRs leads to Renshaw cell activation, which then inhibits the MNs (Alvarez & Fyffe, 2007; Bhumbra & Beato, 2018; Lamotte d'Incamps

et al., 2018). While the precise role of this recurrent inhibitory circuit is still under debate, it undoubtedly serves as a powerful mechanism for controlling MN excitability.

4.2 | Muscarinic effects in spinal locomotor networks

A large part of the neuromodulatory processes occurring in spinal circuits at both dorsal and ventral levels results from mAChR activation (Davis, 2013; Miles & Sillar, 2011). Among the five mAChR subtypes, the presence of the M2, M3, M4, and M5 receptors in the spinal cord has been established by anatomical and biochemical studies (see, for examples: Höglund & Baghdoyan, 1997; Wei et al., 1994; Yung & Lo, 1997). The spinal expression of M1 receptors has also been observed, but only on the basis of pharmacological experiments using M1 antagonists (see for examples: Bertrand & Cazalets, 2011; Naguib & Yaksh, 1997; Zhuo & Gebhart, 1991).

In isolated spinal cord preparations from newborn rodents, it is possible to elicit by pharmacological or electrical stimulations a rhythmic bursting activity that shares many features with the locomotor pattern recorded *in vivo* (Cazalets et al., 1992; Kudo & Yamada, 1987; Pujala et al., 2016; Magnuson & Trinder, 1997). This activity produced in the absence of muscles and sensory inputs was termed “fictive locomotion” and consists of right-left and homolateral flexor-extensor alternating bursts of action potentials recorded from the lumbar ventral roots. When edrophonium (EDRO), an AChE inhibitor, is applied to the *in vitro* spinal cord preparation of newborn rodents, alone or in combination with ACh, it often induces a slow non locomotor-like activity characterized by left/right alternating motor bursting, but an absence of homolateral flexor/extensor alternation (Anglister et al., 2008; Cowley & Schmidt, 1994; Kiehn et al., 1996). A recent study reexamined this AChE inhibitor-induced activity and revealed that within the slow nonalternating flexor/extensor bursts of activity, a well-coordinated fictive locomotory pattern could be observed (Jordan et al., 2014). The EDRO-induced rhythm is insensitive to nAChR antagonists but is abolished in the presence of mAChR antagonists such as atropine (Jordan et al., 2014; Smith et al., 1988) and appears to require the synergistic activation of M3 receptors on locomotor CPG interneurons and M2 receptors on MNs (Jordan et al., 2014). Moreover, slow nonlocomotor rhythms have been observed in the presence of oxotremorine, a non-selective mAChR agonist, in the *in vitro* spinal cord preparation of newborn rodents (Sourieux et al., 2018) and turtles (Guertin & Hounsgaard, 1999). AChE blockers, nonselective mAChR agonists and antagonists, as well as selective M2 receptor antagonists have been shown to modulate ongoing fictive locomotion expressed spontaneously or induced

with noncholinergic neuroactive compounds (Bertrand & Cazalets, 2011; Fok & Stein, 2002; Milan et al., 2015; Miles et al., 2007; Nascimento et al., 2019; Perrins & Roberts, 1995; Quinlan et al., 2004).

A substantial research literature describing the various cellular targets of the muscarinic cholinergic system in spinal locomotor networks is now available. mAChR activation has been shown to strongly depress the sensory afferent inputs received by MNs (Chen et al., 2014; Zhang et al., 2007). It has been reported that muscarinic agonists decrease glutamatergic synaptic transmission onto MNs (Kurihara et al., 1993) through M2 receptor activation, whereas M3 receptor activation tends to increase transmission (Nascimento et al., 2019). A muscarinic-dependent short-term potentiation of commissural glutamatergic transmission has also been described onto MNs (Bertrand & Cazalets, 2011). In rodents, turtles, and salamanders, mAChR activation has been shown to mediate a global increase in MN excitability (Chevallier et al., 2006; Ghezzi et al., 2017; Ireland et al., 2012; Miles et al., 2007) by: (1) inhibiting several types of potassium currents (such as the M3 receptor-associated noninactivating K^+ current, the M-current (Alaburda et al., 2002; Bertrand & Cazalets, 2011; Ghezzi et al., 2017), the inwardly rectifying K^+ current (Chevallier et al., 2006)), the delayed rectifier K^+ current (Nascimento et al., 2020), as well as the hyperpolarization-activated cation current I_H (Chevallier et al., 2006; Ireland et al., 2012); (2) inducing plateau-like membrane depolarizations (Alaburda et al., 2002; Svirskis & Hounsgaard, 1998), (3) reducing after-spike hyperpolarization (AHP; Chevallier et al., (2006)) and the related Ca^{2+} -activated K^+ current through M2 receptor activation (Miles et al., 2007); and (4) activating voltage-gated Ca^{2+} channels (Svirskis & Hounsgaard, 1998). It should be noted that in both lampreys and *Xenopus* tadpoles, muscarinic agonists have little effect or only trigger a slight hyperpolarization of MNs (Perrins & Roberts, 1994; Quinlan & Buchanan, 2008). In addition to species differences, recent data have suggested that the muscarinic modulation of MN excitability could also differ according to MN subtype. In the zebrafish, muscarine increases the firing rate of slow and intermediate secondary axial MNs but decreases the excitability of fast MNs. Such differential effects have been shown to rely at least partly on differential mAChR expression between MN subtypes (Bertuzzi et al., 2018). In the mouse *in vitro* spinal cord preparation, muscarine has been reported to trigger a M2 receptor-dependent outward current in small MNs, but a M3 receptor-dependent inward current in large MNs (Nascimento et al., 2019).

The majority of the muscarinic modulatory effects described above imply the involvement of M2 and M3 mAChRs. Although the M1, M4, and M5 receptor subtypes have been shown to be present in the spinal cord, their role is still largely overlooked. Using selective mAChR antagonists in the isolated spinal cord of the newborn rat, our group has

shown that the M1 and M4 receptors participate in oxotremorine-induced depolarization of lumbar MNs, and that M4 receptors contribute to the cholinergic response to a commissural stimulation (Bertrand & Cazalets, 2011).

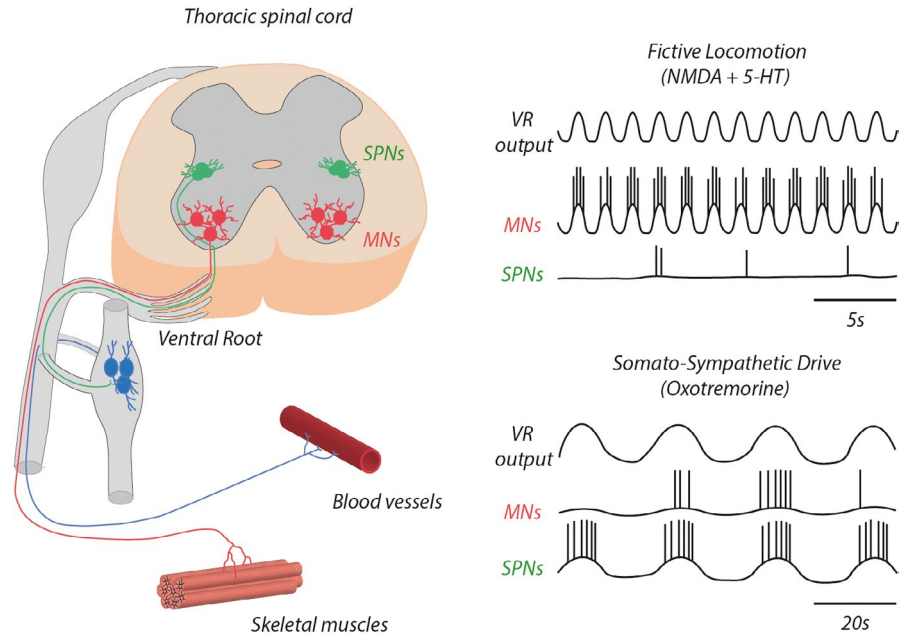
4.3 | Somato-sympathetic coupling: A cholinergic origin

As previously mentioned, AChE inhibitors and mAChR agonists trigger rhythmic activity in the lumbar segments of the spinal cord. We have recently shown that the exogenous application of oxotremorine on isolated thoracic segments induces the expression of a slow motor rhythm in thoracic ventral roots (Sourieux et al., 2018). We observed that during this oxotremorine-induced rhythm, both thoracic MNs and SPNs located in the thoracic segments are rhythmically active (Figure 2). In contrast, when fictive locomotion is induced by NMDA receptor activation (with exogenous NMDA) in combination with serotonin (5-hydroxytryptamine, 5-HT), only the MNs are rhythmically active (Figure 2). In addition to revealing for the first time a distinct rhythmogenic capability of the thoracic cord region, these findings were able to shed light on a functional intraspinal coupling between the somatic and sympathetic systems, the triggering mechanism for which is dependent on mAChR activation (Sourieux et al., 2018). We hypothesize that the somato-sympathetic drive we described could be the basis of the periodic blood pressure variations observed at rest with a period of approximately 10 s, the Mayer waves (Julien et al., 2001).

4.4 | Cholinergic synapses and C boutons

To the best of our knowledge, there is so far no direct evidence for the presence of cholinergic synapses on the distal dendritic tree of MNs, although they almost certainly exist. In contrast, a very easily accessible and particular type of cholinergic synapse located on MN somata and proximal dendrites is very well documented: the C boutons (for reviews see: Deardorff et al., 2014; Witts et al., 2014). Described for the first time in cat MNs (Conradi, 1969), C boutons are large (2–7 μm) synaptic contacts containing spherical synaptic vesicles associated with a highly specialized postsynaptic structure, the subsurface cisternae (SSC) that gave its name to the synapse (Conradi et al., 1979). C boutons seem to be a hallmark of alpha MNs, since gamma MNs, spinal interneurons, and Renshaw cells are devoid of this type of synapse (Deardorff et al., 2014; Hellström et al., 2003). C bouton synapses impinging on MNs were shown to derive from V0c cholinergic interneurons identifiable by their expression of the V0-specific homeobox protein *Dbx1* and the paired-like homeodomain transcription

FIGURE 2 Somato-sympathetic coupling. The specific activation of muscarinic cholinergic receptors (mAChRs) with oxotremorine triggers a slow burst rhythm in thoracic spinal segments. Whereas motoneurons (MNs) are rhythmically active during both fictive locomotion induced by NMDA and serotonin (5-HT) and the oxotremorine-induced slow bursting, intermediolateral sympathetic preganglionic neurons (SPNs) express rhythmicity solely in the presence of oxotremorine. This common synaptic influence shared by MNs and SPNs has been called the somato-sympathetic drive



factor Pitx2, and are located in lamina X and the most medial part of lamina VII (Miles et al., 2007; Zagoraoui et al., 2009). Numerous studies have deciphered the cytoarchitecture of C boutons and described the different proteins present in the pre- and postsynaptic compartments, such as M2 mAChRs (Hellström et al., 2003), SK2/3 subtypes of Ca^{2+} -dependent K^+ channels (Brownstone & Magown, 2013; Deardorff et al., 2013) as well as voltage-activated Kv2.1 channels (Muennich & Fyffe, 2004) at the postsynaptic level and N-type voltage-activated Ca^{2+} channels (Cav2.2; Wilson et al., 2004) in the C bouton terminals facing MNs. The activation of M2 mAChRs in C boutons has been proposed to block directly or indirectly (via N-type Ca^{2+} channel inhibition) the SK channel and shorten spike duration through Kv2.1 delayed rectifier channel activity, leading to a decrease in AHP amplitude and an increase in MN excitability (Deardorff et al., 2014; Miles et al., 2007; Nascimento et al., 2019). Very recently, a new postsynaptic partner of C boutons has been characterized: TMEM16F, a newly emerging family of calcium-activated chloride channels (Soulard et al., 2020). Furthermore, sigma 1 (S1R) (Mavlyutov et al., 2010) and neuroligin 1 (NRG1) receptors (Gallart Palau et al., 2014) have been found at the SSC surface in the postsynaptic C bouton complex. SSC are intracellular Ca^{2+} stores from which Ca^{2+} release is controlled by the S1R (Kourrich et al., 2012), and in turn contributes to the activation of SK channels and AHP generation. Finally, nAChRs and P2X7 ATP receptors were found in the presynaptic compartment of the C bouton and may contribute to the postsynaptic regulation of ACh release (Deng & Fyffe, 2004; Khan et al., 2003). Several studies have provided data on the functional implication of C boutons. The impact of the functional silencing of these

cholinergic synapses has been assessed at the behavioral level in a mouse transgenic line in which ChAT synthesis in $V0_C$ neurons is specifically suppressed. These animals exhibit a preserved locomotor pattern, but exhibit impairments in motor task-dependent modulation, suggesting a crucial role of C boutons in MN recruitment and modulation (Zagoraoui et al., 2009). More recently, Nascimento et al., (2020) showed that the chemogenetic excitation of Pitx2 neurons leads to an increase in motor output through the activation of M2 mAChRs and Kv2.1 channels at C boutons. This study is in agreement with the demonstration of the salient role of C bouton-associated Kv2.1 channels in the regulation of MN firing rate (Romer et al., 2014). In the zebrafish spinal cord, the activation of mAChRs has been shown to alter the operational range of locomotor networks by both facilitating the recruitment of slow and intermediate MNs and depressing fast MN excitability (Bertuzzi & Ampatzis, 2018). Altogether these data reveal that the spinal cholinergic system plays a major role in the state-dependent modulation of motor behaviors.

5 | THE CHOLINERGIC SPINAL SYSTEM IN PATHOPHYSIOLOGICAL CONDITIONS

Altogether, the data gathered on the propriospinal cholinergic system show that it acts through two different types of receptors on all neuronal elements of spinal motor circuitry and plays a major role in network function. Consequently, due to this central role, defects in cholinergic neuromodulatory processes have been consistently associated with spinal motor disorders.

5.1 | Amyotrophic lateral sclerosis (ALS) and C boutons

ALS is a fatal neurodegenerative disorder characterized by the selective degeneration of cortical motor neurons and spinal MNs. Excitability deregulation of MNs has been reported as an important factor in ALS (Jensen et al., 2020; Leroy et al., 2014; Martin et al., 2013; Martínez-Silva et al., 2018) and C bouton synaptic terminal coverage has been shown to differ between MN subtypes, being more prevalent in the most vulnerable fast MNs in ALS (Hellström et al., 2003). Accordingly, numerous studies have been conducted to assess whether an alteration in C bouton morphology occurs during ALS pathogenesis (Casas et al., 2013; Dukkupati et al., 2017; Herron & Miles, 2012; Milan et al., 2015; Pullen & Athanasiou, 2009; Saxena et al., 2013). Although providing contradictory results, these studies have all demonstrated impairments of C bouton cytoarchitecture during the ALS pathogenesis (Casas et al., 2013; Dukkupati et al., 2017; Herron & Miles, 2012; Milan et al., 2015; Pullen & Athanasiou, 2009; Saxena et al., 2013). Moreover, we showed that MNs are not the only spinal neurons to degenerate during ALS, but that cholinergic neurons located in lamina X also undergo cell death processes during the disease's progression (Milan et al., 2015). The physiological consequences of these alterations are still largely unknown, and work is currently in progress to understand further the precise cholinergic inputs received by the different MN subtypes and whether they are at least partly responsible for the fast MNs' selective vulnerability in ALS. A recent study reported that the genetic inactivation of C boutons in the superoxide dismutase 1 (SOD1) mouse model of ALS improves motor performances in early symptomatic stages of ALS, but fails to promote mouse survival (Konsolaki et al., 2020).

5.2 | The cholinergic spinal system after spinal cord injury (SCI)

Lesions of the spinal cord tend to isolate spinal networks from the brain's influence by disconnecting descending pathways from their spinal targets. It is well known that both MNs and SPNs receive a variety of supraspinal synaptic commands (Deuchars & Lall, 2015; Rekling et al., 2000), although there is no direct evidence for supraspinal originating inputs impinging on propriospinal cholinergic interneurons. Pitx2-expressing neurons have been shown to connect ipsilateral MNs and to be driven by local interneurons during fictive locomotion, but their other synaptic partners are so far unknown. (Zagoraiou et al., 2009). However, following SCI, the spinal cholinergic system has been shown to undergo substantial remodeling (Kanazawa

et al., 1979; Kayaalp & Neff, 1980; Vulovic et al., 2018). A unilateral lesion of the corticospinal tract in rats causes a massive elimination of ChAT-positive neurons in lamina X and associated C boutons in the cervical segments, through microglial phagocytosis (Jiang et al., 2018). Additionally, it has been shown that genes coding for nAChR subunits and Ach-releasing machinery are upregulated following a complete sacral SCI, which could lead to an increase in both ACh sensitivity and release (Wienecke et al., 2010). These data are consistent with the observation that the spinal networks exhibit a hypercholinergic state following SCI (Jordan et al., 2014). The contribution of propriospinal cholinergic neurons to functional recovery after SCI is still unclear, although high levels of ChAT immunofluorescence were shown to be strongly correlated with motor recovery after an incomplete SCI in rats (Nakamura et al., 1996). In contrast, in spinal cat and rat, the activation of the spinal cholinergic system appears to be detrimental to locomotor expression, whereas it is improved with cholinergic antagonist administration (Jordan et al., 2014). These authors hypothesized that a strong cholinergic inhibition of sensory afferent inputs could explain their results and suggested that cholinergic antagonists could serve as potent therapeutic drugs to promote motor recovery after SCI.

6 | CONCLUSIONS

The cellular basis of cholinergic neuromodulatory processes in spinal locomotor networks appears to be highly complex and the recent discovery of novel molecular targets, such as TEM16F, suggests that we are far from understanding the full range of this system's actions. We now have some insights into the role of Pitx2 neurons, but important unanswered questions remain: what are the functions of the other propriospinal cholinergic neurons such as non-Pitx2 V0c neurons, partition cells..., do SPNs participate in the cholinergic neuromodulation of spinal locomotor networks, and what are the presynaptic partners of these different cell types? The unique position of the cholinergic neurons as a purely propriospinal neuromodulatory system makes it a prime target for normalizing or reactivating locomotor functions in pathophysiological conditions.

ACKNOWLEDGMENTS

TM and JRC are recipient of a research grant from the International Foundation for Research in Paraplegia (IRP).

CONFLICT OF INTEREST

The authors have no conflict of interest.

AUTHOR CONTRIBUTIONS

TM, CG, JRC, and SSB wrote and revised the manuscript.

ORCID

Jean-René Cazalets  <https://orcid.org/0000-0001-9047-3933>

Sandrine S. Bertrand  <https://orcid.org/0000-0002-3020-7980>

REFERENCES

- Alaburda, A., Perrier, J.-F., & Hounsgaard, J. (2002). An M-like outward current regulates the excitability of spinal motoneurons in the adult turtle. *The Journal of Physiology*, 540(Pt 3), 875–881.
- Alvarez, F. J., & Fyffe, R. E. W. (2007). The continuing case for the Renshaw cell. *The Journal of Physiology*, 584(1), 31–45.
- Anglister, L., Cherniak, M., & Lev-Tov, A. (2017). Ascending pathways that mediate cholinergic modulation of lumbar motor activity. *Journal of Neurochemistry*, 142(Suppl 2), 82–89.
- Anglister, L., Etlin, A., Finkel, E., Durrant, A. R., & Lev-Tov, A. (2008). Cholinesterases in development and disease. *Chemico-biological Interactions*, 175(1–3), 92–100.
- Arvidsson, U., Riedl, M., Elde, R., & Meister, B. (1997). Vesicular acetylcholine transporter (VACHT) protein: A novel and unique marker for cholinergic neurons in the central and peripheral nervous systems. *The Journal of Comparative Neurology*, 378(4), 454–467.
- Barber, R. P., Phelps, P. E., Houser, C. R., Crawford, G. D., Salvaterra, P. M., & Vaughn, J. E. (1984). The morphology and distribution of neurons containing choline acetyltransferase in the adult rat spinal cord: An immunocytochemical study. *The Journal of Comparative Neurology*, 229(3), 329–346.
- Bertrand, S. S., & Cazalets, J.-R. (2011). Cholinergic partition cells and lamina x neurons induce a muscarinic-dependent short-term potentiation of commissural glutamatergic inputs in lumbar motoneurons. *Frontiers in Neural Circuits*, 5, 15.
- Bertuzzi, M., & Ampatzis, K. (2018). Spinal cholinergic interneurons differentially control motoneuron excitability and alter the locomotor network operational range. *Scientific Reports*, 8(1), 1988.
- Bertuzzi, M., Chang, W., & Ampatzis, K. (2018). Adult spinal motoneurons change their neurotransmitter phenotype to control locomotion. *Processing of the National Academy of Sciences of the United States of America*, 40, 201809050.
- Bhumbra, G. S., & Beato, M. (2018). Recurrent excitation between motoneurons propagates across segments and is purely glutamatergic. *PLOS Biology*, 16(3), e2003586–e2003616.
- Blake, J. F., Evans, R. H., & Smith, D. A. (1987). The effect of nicotine on motoneurons of the immature rat spinal cord in vitro. *British Journal of Pharmacology*, 90(1), 167–173.
- Brown, D. A. (2010). Muscarinic acetylcholine receptors (mAChRs) in the nervous system: Some functions and mechanisms. *Journal of Molecular Neuroscience*, 41(3), 340–346.
- Brownstone, R. M., & Magown, P. (2013). Matchmaking: SK channels, C-boutons and motor units. *The Journal of Physiology*, 591(4), 747–748.
- Carlin, K. P., Dai, Y., & Jordan, L. M. (2006). Cholinergic and serotonergic excitation of ascending commissural neurons in the thoraco-lumbar spinal cord of the neonatal mouse. *Journal of Neurophysiology*, 95(2), 1278–1284.
- Casas, C., Herrando-Grabulosa, M., Manzano, R., Mancuso, R., Osta, R., & Navarro, X. (2013). Early presymptomatic cholinergic dysfunction in a murine model of amyotrophic lateral sclerosis. *Brain and Behavior*, 3(2), 145–158.
- Cazalets, J. R., Sqalli-Houssaini, Y., & Clarac, F. (1992). Activation of the central pattern generators for locomotion by serotonin and excitatory amino acids in neonatal rat. *The Journal of Physiology*, 455, 187–204.
- Chen, S.-R., Chen, H., Yuan, W.-X., Wess, J., & Pan, H.-L. (2014). Differential regulation of primary afferent input to spinal cord by muscarinic receptor subtypes delineated using knockout mice. *Journal of Biological Chemistry*, 289(20), 14321–14330.
- Chevallier, S., Nagy, F., & Cabelguen, J.-M. (2006). Cholinergic control of excitability of spinal motoneurons in the salamander. *The Journal of Physiology*, 570(Pt 3), 525–540.
- Conradi, S. (1969). Ultrastructure and distribution of neuronal and glial elements on the surface of the proximal part of a motoneuron dendrite, as analyzed by serial sections. *Acta Physiologica Scandinavica. Supplementum*, 332, 49–64.
- Conradi, S., Kellerth, J. O., & Berthold, C. H. (1979). Electron microscopic studies of serially sectioned cat spinal alpha-motoneurons. II. A method for the description of architecture and synaptology of the cell body and proximal dendritic segments. *The Journal of Comparative Neurology*, 184(4), 741–754.
- Cowley, K. C., & Schmidt, B. J. (1994). A comparison of motor patterns induced by N-methyl-D-aspartate, acetylcholine and serotonin in the in vitro neonatal rat spinal cord. *Neuroscience Letters*, 171(1–2), 147–150.
- Davis, G. W. (2013). Homeostatic signaling and the stabilization of neural function. *Neuron*, 80(3), 718–728.
- Deardorff, A. S., Romer, S. H., Deng, Z., Bullinger, K. L., Nardelli, P., Cope, T. C., & Fyffe, R. E. W. (2013). Expression of postsynaptic Ca²⁺-activated K⁺ (SK) channels at C-bouton synapses in mammalian lumbar -motoneurons. *The Journal of Physiology*, 591(4), 875–897.
- Deardorff, A. S., Romer, S. H., Sonner, P. M., & Fyffe, R. E. W. (2014). Swimming against the tide: Investigations of the C-bouton synapse. *Frontiers in Neural Circuits*, 8, 106.
- Deng, Z., & Fyffe, R. E. W. (2004). Expression of P2X7 receptor immunoreactivity in distinct subsets of synaptic terminals in the ventral horn of rat lumbar spinal cord. *Brain Research*, 1020(1–2), 53–61.
- Deuchars, S. A., & Lall, V. K. (2015). Sympathetic preganglionic neurons: Properties and inputs. *Comprehensive Physiology*, 5(2), 829–869.
- Dukkipati, S. S., Chihi, A., Wang, Y., & Elbasiouny, S. M. (2017). Experimental design and data analysis issues contribute to inconsistent results of C-bouton changes in amyotrophic lateral sclerosis. *eNeuro*, 4(1), ENEURO.0281.
- Dulawa, S. C., & Janowsky, D. S. (2018). Cholinergic regulation of mood: From basic and clinical studies to emerging therapeutics. *Molecular Psychiatry*, 24(5), 694–709.
- Ferreira-Vieira, T. H., Guimaraes, I. M., Silva, F. R., & Ribeiro, F. M. (2016). Alzheimer's disease: Targeting the cholinergic system. *Current Neuropharmacology*, 14(1), 101–115.
- Finkel, E., Etlin, A., Cherniak, M., Mor, Y., Lev-Tov, A., & Anglister, L. (2014). Neuroanatomical basis for cholinergic modulation of locomotor networks by sacral relay neurons with ascending lumbar projections. *The Journal of Comparative Neurology*, 522(15), 3437–3455.
- Fok, M., & Stein, R. B. (2002). Effects of cholinergic and noradrenergic agents on locomotion in the mudpuppy (*Necturus maculatus*). *Experimental Brain Research*, 145(4), 498–504.
- Gallart Palau, X., Tarabal, O., Casanovas, A., Sábado, J., Correa, F. J., Hereu, M., Piedrafita, L., Calderó, J., & Esquerda, J. E. (2014). Neuregulin-1 is concentrated in the postsynaptic subsurface cistern

- of C-bouton inputs to α -motoneurons and altered during motoneuron diseases. *The FASEB Journal: Official Publication of the Federation of American Societies for Experimental Biology*, 28(8), 3618–3632.
- Garcia-Campmany, L., Stam, F. J., & Goulding, M. (2010). From circuits to behaviour: Motor networks in vertebrates. *Current Opinion in Neurobiology*, 20(1), 116–125.
- Ghezzi, F., Corsini, S., & Nistri, A. (2017). Electrophysiological characterization of the M-current in rat hypoglossal motoneurons. *Neuroscience*, 340, 62–75.
- Guertin, P. A., & Hounsgaard, J. (1999). L-Type calcium channels but not N-methyl-D-aspartate receptor channels mediate rhythmic activity induced by cholinergic agonist in motoneurons from turtle spinal cord slices. *Neuroscience Letters*, 261(1–2), 81–84.
- Haam, J., & Yakel, J. L. (2017). Cholinergic modulation of the hippocampal region and memory function. *Journal of Neurochemistry*, 142(Suppl 1), 111–121.
- Hellström, J., Oliveira, A. L. R., Meister, B., & Cullheim, S. (2003). Large cholinergic nerve terminals on subsets of motoneurons and their relation to muscarinic receptor type 2. *The Journal of Comparative Neurology*, 460(4), 476–486.
- Herron, L. R., & Miles, G. B. (2012). Gender-specific perturbations in modulatory inputs to motoneurons in a mouse model of amyotrophic lateral sclerosis. *Neuroscience*, 226(C), 313–323.
- Höglund, A. U., & Baghdoyan, H. A. (1997). M2, M3 and M4, but not M1, muscarinic receptor subtypes are present in rat spinal cord. *Journal of Pharmacology and Experimental Therapeutics*, 281(1), 470–477.
- Huang, A., Noga, B., Carr, P., Fedirchuk, B., & Jordan, L. (2000). Spinal cholinergic neurons activated during locomotion: Localization and electrophysiological characterization. *Journal of Neurophysiology*, 83(6), 3537.
- Ireland, M. F., Funk, G. D., & Bellingham, M. C. (2012). Muscarinic acetylcholine receptors enhance neonatal mouse hypoglossal motoneuron excitability in vitro. *Journal of Applied Physiology (Bethesda, Md.: 1985)*, 113(7), 1024–1039.
- Jensen, D. B., Kadlecova, M., Allodi, I., & Meehan, C. F. (2020). Spinal motoneurons are intrinsically more responsive in the adult G93A SOD1 mouse model of amyotrophic lateral sclerosis. *The Journal of Physiology*, 598(19), 4385–4403.
- Jiang, Y.-Q., Sarkar, A., Amer, A., & Martin, J. H. (2018). Transneuronal downregulation of the premotor cholinergic system after corticospinal tract loss. *Journal of Neuroscience*, 38(39), 8329–8344.
- Jordan, L. M., Liu, J., Hedlund, P. B., Akay, T., & Pearson, K. G. (2008). Descending command systems for the initiation of locomotion in mammals. *Brain Research Reviews*, 57(1), 183–191.
- Jordan, L. M., McVagh, J. R., Noga, B. R., Cabaj, A. M., Majczyński, H., Sławińska, U., Provencher, J., Leblond, H., & Rossignol, S. (2014). Cholinergic mechanisms in spinal locomotion-potential target for rehabilitation approaches. *Frontiers in Neural Circuits*, 8(15), 132.
- Julien, C., Malpas, S. C., & Stauss, H. M. (2001). Sympathetic modulation of blood pressure variability. *Journal of Hypertension*, 19(10), 1707–1712.
- Kanazawa, I., Sutoo, D., Oshima, I., & Saito, S. (1979). Effect of transection on choline acetyltransferase, thyrotropin releasing hormone and substance P in the cat cervical cord. *Neuroscience Letters*, 13(3), 325–330.
- Katz, P. S. (1995). Intrinsic and extrinsic neuromodulation of motor circuits. *Current Opinion in Neurobiology*, 5(6), 799–808.
- Kayaalp, S. O., & Neff, N. H. (1980). Regional distribution of cholinergic muscarinic receptors in spinal cord. *Brain Research*, 196(2), 429–436.
- Khan, I., Osaka, H., Stanislaus, S., Calvo, R. M., Deerinck, T., Yaksh, T. L., & Taylor, P. (2003). Nicotinic acetylcholine receptor distribution in relation to spinal neurotransmission pathways. *The Journal of Comparative Neurology*, 467(1), 44–59.
- Kiehn, O. (2016). Decoding the organization of spinal circuits that control locomotion. *Nature Reviews Neuroscience*, 17(4), 224–238.
- Kiehn, O., Johnson, B. R., & Raastad, M. (1996). Plateau properties in mammalian spinal interneurons during transmitter-induced locomotor activity. *Neuroscience*, 75(1), 263–273.
- Konsolaki, E., Koropouli, E., Tsape, E., Pothakos, K., & Zagoraiou, L. (2020). Genetic inactivation of cholinergic c bouton output improves motor performance but not survival in a mouse model of amyotrophic lateral sclerosis. *Neuroscience*, 450, 71–80.
- Kourrich, S., Su, T.-P., Fujimoto, M., & Bonci, A. (2012). The sigma-1 receptor: Roles in neuronal plasticity and disease. *Trends in Neurosciences*, 35(12), 762–771.
- Krassioukov, A. V., Bygrave, M. A., Puckett, W. R., Bunge, R. P., & Rogers, K. A. (1998). Human sympathetic preganglionic neurons and motoneurons retrogradely labelled with DiI. *Journal of the Autonomic Nervous System*, 70(1–2), 123–128.
- Kudo, N., & Yamada, T. (1987). N-methyl-D, L-aspartate-induced locomotor activity in a spinal cord-hindlimb muscles preparation of the newborn rat studied in vitro. *Neuroscience Letters*, 75(1), 43–48.
- Kurihara, T., Suzuki, H., Yanagisawa, M., & Yoshioka, K. (1993). Muscarinic excitatory and inhibitory mechanisms involved in afferent fibre-evoked depolarization of motoneurons in the neonatal rat spinal cord. *British Journal of Pharmacology*, 110(1), 61–70.
- Lamotte d'Incamps, B., Zorbaz, T., Dingova, D., Krejci, E., & Ascher, P. (2018). Stoichiometry of the heteromeric nicotinic receptors of the renshaw cell. *Journal of Neuroscience*, 38(21), 4943–4956.
- Leroy, F., d'Incamps, B. L., Imhoff-Manuel, R. D., & Zytnicki, D. (2014). Early intrinsic hyperexcitability does not contribute to motoneuron degeneration in amyotrophic lateral sclerosis. *eLife*, 3, pp.–.
- Li, W., Ochalski, P., Brimijoin, S., Jordan, L. M., & Nagy, J. I. (1995). C-terminals on motoneurons: Electron microscope localization of cholinergic markers in adult rats and antibody-induced depletion in neonates. *Neuroscience*, 65(3), 879–891.
- Magnuson, D. S., & Trinder, T. C. (1997). Locomotor rhythm evoked by ventrolateral funiculus stimulation in the neonatal rat spinal cord in vitro. *Journal of Neurophysiology*, 77(1), 200–206.
- Martin, E., Cazenave, W., Cattaert, D., & Branchereau, P. (2013). Embryonic alteration of motoneuronal morphology induces hyperexcitability in the mouse model of amyotrophic lateral sclerosis. *Neurobiology of Disease*, 54, 116–126.
- de Lourdes Martınez-Silva, M., Imhoff-Manuel, R. D., Sharma, A., Heckman, C. J., Shneider, N. A., Roselli, F., Zytnicki, D., & Manuel, M. (2018). Hypoexcitability precedes denervation in the large fast-contracting motor units in two unrelated mouse models of ALS. *eLife*, 7, 1958.
- Mavlyutov, T. A., Epstein, M. L., Andersen, K. A., Ziskind-Conhaim, L., & Ruoho, A. E. (2010). The sigma-1 receptor is enriched in postsynaptic sites of C-terminals in mouse motoneurons. An anatomical and behavioral study. *Neuroscience*, 167(2), 247–255.
- Mentis, G. Z., Alvarez, F. J., Bonnot, A., Richards, D. S., Gonzalez-Forero, D., Zerda, R., & O'Donovan, M. J. (2005). Noncholinergic excitatory actions of motoneurons in the neonatal mammalian

- spinal cord. *Proceedings of the National Academy of Sciences of the United States of America*, 102(20), 7344–7349.
- Milan, L., Courtand, G., Cardoit, L., Masméjean, F., Barrière, G., Cazalets, J.-R., Garret, M., & Bertrand, S. S. (2015). Age-related changes in pre- and postsynaptic partners of the cholinergic C-boutons in wild-type and SOD1G93A lumbar motoneurons. *PLoS One*, 10(8), e0135525–e135621.
- Miles, G. B., & Sillar, K. T. (2011). Neuromodulation of vertebrate locomotor control networks. *Physiology*, 26(6), 393–411.
- Miles, G. B., Hartley, R., Todd, A. J., & Brownstone, R. M. (2007). Spinal cholinergic interneurons regulate the excitability of motoneurons during locomotion. *Processing of the National Academy of Science*, 104(7), 2448–2453.
- Muennich, E. A. L., & Fyffe, R. E. W. (2004). Focal aggregation of voltage-gated, Kv2.1 subunit-containing, potassium channels at synaptic sites in rat spinal motoneurons. *The Journal of Physiology*, 554(Pt 3), 673–685.
- Naguib, M., & Yaksh, T. L. (1997). Characterization of muscarinic receptor subtypes that mediate antinociception in the rat spinal cord. *Anesthesia and Analgesia*, 85(4), 847–853.
- Nakamura, M., Fujimura, Y., Yato, Y., Watanabe, M., & Yabe, Y. (1996). Changes in choline acetyltransferase activity and distribution following incomplete cervical spinal cord injury in the rat. *Neuroscience*, 75(2), 481–494.
- Nascimento, F., Broadhead, M. J., Tetranga, E., Tsape, E., Zagoraiou, L., & Miles, G. B. (2020). Synaptic mechanisms underlying modulation of locomotor-related motoneuron output by premotor cholinergic interneurons. *eLife*, 9, e54170.
- Nascimento, F., Spindler, L. R. B., & Miles, G. B. (2019). Balanced cholinergic modulation of spinal locomotor circuits via M2 and M3 muscarinic receptors. *Scientific Reports*, 9(1), 14051.
- Naser, P. V., & Kuner, R. (2018). Molecular, cellular and circuit basis of cholinergic modulation of pain. *Neuroscience*, 387, 135–148.
- Ogier, R., Liu, X., Tribollet, E., Bertrand, D., & Raggénbass, M. (2004). Identified spinal motoneurons of young rats possess nicotinic acetylcholine receptors of the heteromeric family. *European Journal of Neuroscience*, 20(10), 2591–2597.
- Perrins, R., & Roberts, A. (1994). Nicotinic and muscarinic ACh receptors in rhythmically active spinal neurones in the *Xenopus laevis* embryo. *The Journal of Physiology*, 478(2), 221–228.
- Perrins, R., & Roberts, A. (1995). Cholinergic contribution to excitation in a spinal locomotor central pattern generator in *Xenopus* embryos. *Journal of Neurophysiology*, 73(3), 1013–1019.
- Picciotto, M. R., Higley, M. J., & Mineur, Y. S. (2012). Acetylcholine as a neuromodulator: Cholinergic signaling shapes nervous system function and behavior. *Neuron*, 76(1), 116–129.
- Pujala, A., Blivis, D., & O'Donovan, M. J. (2016). Interactions between dorsal and ventral root stimulation on the generation of locomotor-like activity in the neonatal mouse spinal cord. *eNeuro*, 3(3), ENEURO.0101–16.2016–16.
- Pullen, A. H., & Athanasiou, D. (2009). Increase in presynaptic territory of C-terminals on lumbar motoneurons of G93A SOD1 mice during disease progression. *European Journal of Neuroscience*, 29(3), 551–561.
- Quinlan, K. A., & Buchanan, J. T. (2008). Cellular and synaptic actions of acetylcholine in the lamprey spinal cord. *Journal of Neurophysiology*, 100(2), 1020–1031.
- Quinlan, K. A., Placas, P. G., & Buchanan, J. T. (2004). Cholinergic modulation of the locomotor network in the lamprey spinal cord. *Journal of Neurophysiology*, 92(3), 1536–1548.
- Rekling, J. C., Funk, G. D., Bayliss, D. A., Dong, X. W., & Feldman, J. L. (2000). Synaptic control of motoneuronal excitability. *Physiological Reviews*, 80(2), 767–852.
- Romer, S. H., Dominguez, K. M., Gelpi, M. W., Deardorff, A. S., Tracy, R. C., & Fyffe, R. E. W. (2014). Redistribution of Kv2.1 ion channels on spinal motoneurons following peripheral nerve injury. *Brain Research*, 1547(C), 1–15.
- Rye, D. B., Lee, H. J., Saper, C. B., & Wainer, B. H. (1988). Medullary and spinal efferents of the pedunculopontine tegmental nucleus and adjacent mesopontine tegmentum in the rat. *The Journal of Comparative Neurology*, 269(3), 315–341.
- Saxena, S., Roselli, F., Singh, K., Leptien, K., Julien, J.-P., Gros-Louis, F., & Caroni, P. (2013). Neuroprotection through excitability and mTOR required in ALS motoneurons to delay disease and extend survival. *Neuron*, 80(1), 80–96.
- Sharples, S. A., Koblinger, K., Humphreys, J. M., & Whelan, P. J. (2014). Dopamine: A parallel pathway for the modulation of spinal locomotor networks. *Frontiers in Neural Circuits*, 8(JUNE), 55.
- Sherriff, F. E., Henderson, Z., & Morrison, J. F. B. (1991). Further evidence for the absence of a descending cholinergic projection from the brainstem to the spinal cord in the rat. *Neuroscience Letters*, 128(1), 52–56.
- Smith, J. C., Feldman, J. L., & Schmidt, B. J. (1988). Neural mechanisms generating locomotion studied in mammalian brain stem-spinal cord in vitro. *The FASEB Journal : Official Publication of the Federation of American Societies for Experimental Biology*, 2(7), 2283–2288.
- Soulard, C., Salsac, C., Mouzat, K., Hilaire, C., Roussel, J., Mezghrani, A., Lumbroso, S., Raoul, C., & Scamps, F. (2020). Spinal motoneuron TMEM16F acts at C-boutons to modulate motor resistance and contributes to ALS pathogenesis. *Cell Reports*, 30(8), 2581–2593.e7.
- Sourieux, M., Bertrand, S. S., & Cazalets, J.-R. (2018). Cholinergic-mediated coordination of rhythmic sympathetic and motor activities in the newborn rat spinal cord. *PLOS Biology*, 16(7), e2005460.
- Stepien, A. E., Tripodi, M., & Arber, S. (2010). Monosynaptic rabies virus reveals premotor network organization and synaptic specificity of cholinergic partition cells. *Neuron*, 68(3), 456–472.
- Svirskis, G., & Hounsgaard, J. (1998). Transmitter regulation of plateau properties in turtle motoneurons. *Journal of Neurophysiology*, 79(1), 45–50.
- Tallini, Y. N., Shui, B., Greene, K. S., Deng, K.-Y., Doran, R., Fisher, P. J., Zipfel, W., & Kotlikoff, M. I. (2006). BAC transgenic mice express enhanced green fluorescent protein in central and peripheral cholinergic neurons. *Physiological Genomics*, 27(3), 391–397.
- Thiele, A., & Bellgrove, M. A. (2018). Neuromodulation of attention. *Neuron*, 97(4), 769–785.
- Umana, I. C., Daniele, C. A., Miller, B. A., Abburi, C., Gallagher, K., Brown, M. A., Mason, P., & McGehee, D. S. (2017). Nicotinic modulation of descending pain control circuitry. *Pain*, 158(10), 1938–1950.
- VanderHorst, V. G. J. M., & Ulfhake, B. (2006). The organization of the brainstem and spinal cord of the mouse: Relationships between monoaminergic, cholinergic, and spinal projection systems. *Journal of Chemical Neuroanatomy*, 31(1), 2–36.
- Vulovic, M., Divac, N., & Jakovcevski, I. (2018). Confocal synaptology: Synaptic rearrangements in neurodegenerative disorders and upon nervous system injury. *Frontiers in Neuroanatomy*, 12, 17018–17019.

- Wei, J., Walton, E. A., Milici, A., & Buccafusco, J. J. (1994). m1–m5 muscarinic receptor distribution in rat CNS by RT-PCR and HPLC. *Journal of Neurochemistry*, *63*(3), 815–821.
- Wienecke, J., Westerdahl, A.-C., Hultborn, H., Kiehn, O., & Ryge, J. (2010). Global gene expression analysis of rodent motor neurons following spinal cord injury associates molecular mechanisms with development of postinjury spasticity. *Journal of Neurophysiology*, *103*(2), 761–778.
- Wilson, J. M., Rempel, J., & Brownstone, R. M. (2004). Postnatal development of cholinergic synapses on mouse spinal motoneurons. *The Journal of Comparative Neurology*, *474*(1), 13–23.
- Witts, E. C., Zagoraiou, L., & Miles, G. B. (2014). Anatomy and function of cholinergic C bouton inputs to motor neurons. *Journal of Anatomy*, *224*(1), 52–60.
- Yung, K. K. L., & Lo, Y. L. (1997). Immunocytochemical localization of muscarinic m2 receptor in the rat spinal cord. *Neuroscience Letters*, *229*(2), 81–84.
- Zagoraiou, L., Akay, T., Martin, J. F., Brownstone, R. M., Jessell, T. M., & Miles, G. B. (2009). A cluster of cholinergic premotor interneurons modulates mouse locomotor activity. *Neuron*, *64*(5), 645–662.
- Zhang, H.-M., Chen, S.-R., & Pan, H.-L. (2007). Regulation of glutamate release from primary afferents and interneurons in the spinal cord by muscarinic receptor subtypes. *Journal of Neurophysiology*, *97*(1), 102–109.
- Zhuo, M., & Gebhart, G. F. (1991). Tonic cholinergic inhibition of spinal mechanical transmission. *Pain*, *46*(2), 211–222.
- Zoli, M., Pistillo, F., & Gotti, C. (2014). Diversity of native nicotinic receptor subtypes in mammalian brain. *Neuropharmacology*, 1–10.
- Ztaou, S., & Amalric, M. (2019). Contribution of cholinergic interneurons to striatal pathophysiology in Parkinson's disease. *Neurochemistry International*, *126*, 1–10.

How to cite this article: Mille T, Quilgars C, Cazalets JR, Bertrand SS. Acetylcholine and spinal locomotor networks: The insider. *Physiol Rep*. 2021;9:e14736. <https://doi.org/10.14814/phy2.14736>