



HAL
open science

ADAM10 pharmacological inhibition modifies the expression of components of the dopaminergic system

Subhamita Maitra, Bruno Vincent

► **To cite this version:**

Subhamita Maitra, Bruno Vincent. ADAM10 pharmacological inhibition modifies the expression of components of the dopaminergic system. 2023. hal-04234605

HAL Id: hal-04234605

<https://hal.science/hal-04234605>

Preprint submitted on 10 Oct 2023

HAL is a multi-disciplinary open access archive for the deposit and dissemination of scientific research documents, whether they are published or not. The documents may come from teaching and research institutions in France or abroad, or from public or private research centers.

L'archive ouverte pluridisciplinaire **HAL**, est destinée au dépôt et à la diffusion de documents scientifiques de niveau recherche, publiés ou non, émanant des établissements d'enseignement et de recherche français ou étrangers, des laboratoires publics ou privés.

ADAM10 pharmacological inhibition modifies the expression of components of the dopaminergic system

Subhamita Maitra^{1,#}, Bruno Vincent^{1,2,*}

¹ Institute of Molecular Biosciences, Mahidol University, Nakhon Pathom, 73170 Thailand

² Centre National de la Recherche Scientifique, 2 rue Michel Ange, 75016 Paris, France

Running title: Effects of GI254023X on the dopamine system

* Address correspondence to: Bruno Vincent (Tel: +66 (0)2441 9003-7 (ext 1451); Fax: +66 (0)2441 1013; email: bruno.vin@mahidol.ac.th)

Present address: Department of Radiation Sciences, Umeå University, Umeå 90736, Sweden.

Keywords: Alzheimer's disease; neurodegeneration; cognitive deficits; sAPP α ; α -secretase; dopaminergic transmission.

Abstract

Dopamine is a primary neurotransmitter associated with memory formation, emotional control, reward processing and other higher order mental functions. Altered dopamine signaling is implied in several neuropsychiatric, neurodevelopmental and neurodegenerative disorders including Alzheimer's disease. Age-related memory decline often presents itself with spectrum of overtly behavioral responses in patients diagnosed with Alzheimer's disease, thus suggesting that an alteration of dopaminergic transmission could account for the psychotic symptoms observed along the pathology. Since less sAPP α production due to reduced α -secretase activity is a direct contributor of compromised neuroprotection and can impart higher vulnerability to cellular insults, we explored the impact of specific inhibition of ADAM10, the main neuronal α -secretase, on dopamine system components in cultured human SH-SY5Y neuroblastoma cells. We found that dopamine receptor D4 protein levels were dose-dependently down regulated by GI254023X, but not by the ADAM17-specific inhibitor TAPI-0. We then established that GI254023X operates at a transcriptional levels. Furthermore, we showed that GI254023X treatment also significantly increased the levels of active PKA as well as the transcription of the dopamine-degrading enzymes catechol-O-methyltransferase, monoamine oxidase A and monoamine oxidase B. Altogether, our data propose that ADAM10 inhibition modulates the dopaminergic system to possibly trigger psychosis in Alzheimer's disease.

1. Introduction

Mental health burden in the elderly population is growing by leaps and bounds. Frequent electrolytic imbalance, recurrent strokes and most significantly dementia are the first line contributors of aging brain hazards. Alzheimer's disease (AD), as the first cause of dementia, is associated with severe loss of memory, lack of self-regulation and other cognitive decline. Being a complex multifactorial disorder, several processes including oxidative stress, protein aggregation, mitochondrial dysfunction and neuroinflammation are recurrent events accompanying the development of the disease.

Apart from the initial symptoms of declarative memory loss, working memory inefficiencies that gradually lead to wider range of memory loss and several domain of cognitive impairment [1], a subgroup of AD patients do exhibit psycho behavioural abnormalities characterised as behavioural and psychological symptoms of dementia (BPSD) [2,3]. The frequently noticed symptoms are apathy, aggressiveness, anxiety, depression, delusion and hallucinations [2,4,5]. Anxiety and depression are often so severe that it demands special consideration as a distinct endophenotype [6]. Importantly, AD patients with psychosis displays reduced frontal lobe function when compared to non-psychotic AD [7]. Moreover, BPSD were found to vary between late onset and early onset groups [8], are correlated to sharp cognitive decline [9] and are as heritable as the disease itself [10].

The dopaminergic system is well implied in different neuropsychiatric and neurobehavioral disorders including AD [11]. However, whether dopaminergic system alterations are genuinely involved in the course of AD is still under debate despite the existence of observations going in this direction [12,13]. At the molecular level, two members of the $G_{i\alpha}$ -coupled D2-like family dopamine receptors D2 (DRD2) and D4 (DRD4) emerged as possibly linked to AD due to both their physiological implication in memory functions that are impaired in AD and to their previously reported alteration during the

pathology. Indeed, DRD2, which is involved in memory formation in the dentate gyrus [14] and mediates cognitive flexibility in humans [15], has been shown to be reduced in AD [16] while DRD2 agonist increases cortical excitability and cholinergic transmission in AD patients [17]. As far as DRD4 is concerned, it promotes working memory performance [18-20] and an increased methylation of its promoter augments the risk of developing AD [21].

Moreover, a number of observations suggested a link between the alteration of the dopaminergic system and the amyloid pathology observed in Alzheimer's disease. Thus, it has been shown that dopaminergic pathology and amyloid- β peptide ($A\beta$) deposition are closely related [22]. Moreover, it has been proposed that $A\beta$ oligomers, through their prolonged binding to the $\alpha 7$ neuronal nicotinic acetylcholine receptors ($\alpha 7$ nAChRs), which are present on dopaminergic neurons, could alter the dopaminergic system and disrupt the mechanisms of synaptic plasticity and memory functions via an increase in calcium and an over activation of the ERK/MAPK cascade [23,24]. However, whether modulating the production of other β -amyloid precursor protein (β APP)-derived metabolite through the regulation of secretases could interfere with components of the dopaminergic system still remains elusive. Such a possibility is actually supported by the fact that the treatment of rat hippocampal organotypic slices with 1nM of the β APP α -secretase-derived sAPP α metabolite for 24 hours induces a 1.29-fold increase in DRD2 expression [25].

We here undertook to investigate the impact of a direct and specific inhibition of ADAM10 on the levels of DRD2, DRD4 and several other components of the dopaminergic systems in the human neuroblastoma SH-SY5Y cell line. Importantly, because GI254023X possesses a 100 times greater inhibitory capacity on ADAM10 compared to ADAM17 recombinant proteases [26,27], since it is established that ADAM10 is the main physiological α -secretase activity in neurons [28] and because this inhibitor completely abrogates IGF-1-induced sAPP α production in SH-SY5Y cells at concentrations similar to those used in the

present study [29], we can reasonably consider this inhibitor to be specific for ADAM10 under our experimental conditions.

Our data show that GI254023X, but not the ADAM17-specific inhibitor TAPI-0, dose-dependently decreased DRD4 expression without altering DRD2 levels. Moreover, GI254023X also increased the immunoreactivity of the catalytic subunit α of PKA as well as the mRNA levels of the dopamine-degrading catechol-O-methyltransferase (COMT), monoamine oxidase A (MAOA) and monoamine oxidase B (MAOB) enzymes. Altogether, our results established that ADAM10 specific inhibition perturbs the dopaminergic system and might be part of the molecular bridge linking AD pathology with its associated psychotic symptoms.

2. Materials and Methods

2.1. Antibodies, reagents and cell lines

Polyclonal anti-ADAM10 (AB19026) and anti-ADAM17 (AB19027) antibodies were purchased from Millipore (Bedford, MA, USA). Polyclonal anti- β APP (A8717), monoclonal anti- β -actin (A2228), dimethyl sulfoxide (DMSO) and sodium bicarbonate were from Sigma (St Louis, MO, USA). Monoclonal anti-DRD2 (sc-5303), anti-DRD4 (sc-136169) and anti-GAPDH (sc-32233) antibodies were from Santa Cruz (Santa Cruz, CA, USA). The monoclonal anti- β -amyloid antibody (DE2B4), which was used to specifically detect sAPP α , was from IBL (Minneapolis, MN, USA). The polyclonal antibody specifically recognizing the catalytic subunit α of PKA (4782), the goat anti-mouse (polyclonal 7076) and goat anti-rabbit (polyclonal 7074) peroxidase-conjugated secondary antibodies were from Cell Signaling (Beverly, MA, USA). DMEM complete medium, foetal bovine serum (FBS) and penicillin-streptomycin mix were from Invitrogen (Carlsbad, CA, USA). ECL and ammonium persulphate (APS) were from GE Healthcare (Pisataway, NJ, USA). Tris buffer,

glycine and sodium dodecyl sulphate (SDS) were from Amresco (Solon, CA, USA). Skim milk powder was from Bio Basic (Singapore). Human SH-SY5Y neuroblastoma cells (gift from Dr. Narisorn Kitiyanant, Mahidol University) were grown at 37°C, 5% CO₂ in high glucose-DMEM supplemented with 10% FBS, penicillin (100U/ml) and streptomycin (50mg/ml).

2.2. ADAM10 and ADAM17 specific inhibitions with GI254023X and TAPI-0 respectively

The stock solutions of GI254023X (Sigma) and TAPI-0 (Calbiochem, San Diego, CA, USA) were prepared at 10mM in 100% DMSO from which different intermediate concentrations were prepared in 10% DMSO and kept frozen. The cells were treated with the respective intermediate solutions for 15 hours in complete media. The final concentration of DMSO in each treated well was 0.1%. Therefore, control cells were always vehicle-treated with 0.1% DMSO.

2.3. Western blot analysis

At the end of the 15 hours treatments, 30-40µg of proteins were separated by SDS-polyacrylamide gel electrophoresis on 10% (ADAM10 and ADAM17) or 12% (DRD2, DRD4 and PKA) Tris/glycine gels and run at 100 volts for 2-2.5 hours. Proteins were then transferred onto a nitrocellulose membrane for 60-90 minutes at 90 volts. After the effectiveness of protein transfer was checked with Ponceau red staining, nitrocelluloses were incubated in 5% non-fat milk blocking solution for 30 min. Membranes were then incubated with primary antibodies directed against βAPP (1/4000 dilution), ADAM10 (1/500 dilution), ADAM17 (1/1000 dilution), DRD2 (1/500 dilution), DRD4 (1/500 dilution) or PKA Cα (1/1000 dilution) on a platform shaker overnight at 4°C. On the next day, after 3 washes with PBST (PBS containing 0.05% Tween 20), membranes were incubated with HRP-conjugated

anti-rabbit (β APP, ADAM10, ADAM17, PKA C α) or anti-mouse (D2R, D4R) secondary antibodies (1/3000) for 2h and rinsed 3 times with PBST. Immunoreactivities were processed using ECL and signals were detected using the Azure C400 Gel Imaging System. Quantification of band densities was performed using the Image J Analyzer software (<http://imagej.nih.gov/ij/>). All membranes were subsequently reblotted with GAPDH (1/7500) or β -actin (1/5000) and the HRP-conjugated anti-mouse secondary antibody. GAPDH and β -actin immunoreactivities were used as internal standard to normalize the data.

2.4. sAPP α secretion and measurement

SH-SY5Y cells were cultured in 35mm-dishes until they reached 80% confluence. Cells were incubated without (control) or with GI254023X or TAPI-0 (100nM, 1 μ M, 10 μ M) for 15 hours at 37⁰C in 1ml of serum-free DMEM. TCA (10%) precipitation was then performed from the whole media (1ml) and the entire protein precipitate was submitted to western blot analysis on a 10% SDS-PAGE using the primary antibody DE2B4 directed against sAPP α (1/500 dilution) and the secondary HRP-conjugated anti-mouse antibody and processed as described above.

2.5. Real-time quantitative polymerase chain reaction (q-PCR)

Following treatments for 15 hours in complete media, total RNA was extracted and purified with the PureLink RNA mini kit (Ambion, Life Technologies, Austin, TX, USA). Real-time PCR was performed with 100ng of total RNA using the QuantiFast SYBR Green RT-PCR kit (Qiagen, Singapore) detector system (ABI Quant studio 5) and the SYBR Green detection protocol. The 2x QuantiFast SYBR Green RT-PCR master mix, QuantiFast RT mix, QuantiTectPrimer Assay and template RNA were mixed and the reaction volume was adjusted to 25 μ l using RNase-free water. The specific primers were designed and purchased from

Qiagen. Each primer is a 10x QuantiTect Primer Assay containing a mix of forward and reverse primers for specific targets: Hs_DRD2_1 (QT00012558), Hs_DRD4_1 (QT00204316), Hs-DBH_1 (QT00047194), Hs_DDC_1 (QT00046774), Hs_COMT_2 (QT01890756), Hs_MAOA_1(QT00040411), Hs_MAOB_1 (QT-00009870) and Hs_GAPDH_1_SG (QT00079247, human GAPDH).

2.6. Cell viability assay

Cells were seeded in 96-well polystyrene-coated tissue culture plate (corning) over night. Proper attachment and confluence of the cells were confirmed by checking under microscope. Media was removed and cells were treated with inhibitors at various concentrations in quadruplicate for different time points with control cells being treated with vehicle (0.1% DMSO). Following treatment for 15 hours, (3-(4,5-dimethylthiazol-2-yl)-2,5-diphenyltetrazolium bromide (MTT) (0.5mg/ml) was added for 1.5 hours. Formazan crystals formation was then checked under microscope and the media was replaced by DMSO (100%) until purple crystals have dissolved. Absorbance was measured at 595nm.

2.7. Statistical analysis

Statistical analyses were performed with the Prism software (GraphPad, San Diego, USA) using the unpaired t test for pair-wise comparisons. All values were the means \pm SE with *p* values equal to or less than 0.05 being considered significant.

3. Results

3.1. GI254023X impairs sAPP α production and decreases DRD4 protein levels

We first examined the effect of 15 hour-treatments of cultured SH-SY5Y cells with the specific ADAM10 inhibitor GI254023X at three different doses (0.1, 1 and 10 μ M) on the

production of sAPP α (the β APP-derived metabolite engendered by ADAM10) as well as on the protein levels of β APP (ADAM10 substrate) and ADAM10 itself. The results showed a dose-dependent decrease in sAPP α secretion by GI254023X with about 75% inhibition at 10 μ M (Figure 1A and E) with no modification of β APP (Figure 1A and F) and ADAM10 (Figure 1B and G) immunoreactivities whatever the dose considered. These observations are in good agreement with our previous data having established that 10 μ M of GI254023X only impairs sAPP α production without modifying β APP and ADAM10 levels in the same cell line [30]. We then wanted to determine, as part of our initial objective, whether GI254023X could modify the pattern of DRD2 and DRD4 protein levels under the same experimental conditions. Although no changes were observed regarding DRD2 protein levels following GI254023X treatment at all concentrations (Figure 1C and H), DRD4 immunoreactivity was gradually and significantly diminished by GI254023X with an inhibition profile quite similar to the one observed for sAPP α (Figure 1D and I).

3.2. Specific inhibition of ADAM17 does not modify DRD2 and DRD4 immunoreactivities

We then examined the impact of the specific inhibition of ADAM17, another α -secretase activity barely involved in the constitutive metabolism of β APP, on the same parameters. Firstly, treatments with the ADAM17 specific inhibitor TAPI-0 did not show any decrease in the production of sAPP α (Figure 2A and E) and in the levels of β APP (Figure 2A and F). The absence of participation of this enzyme in the α -secretase cleavage of β APP under our experimental conditions is in accordance with the fact that ADAM17 is principally involved in the PKC-regulated α -secretase cleavage of β APP [31]. Secondly, beyond the fact that TAPI-0 did not change ADAM17 immunoreactivity (Figure 2B and G), it also failed to show an effect on both DRD2 (Figure 2C and H) and DRD4 (Figure 2D and I) protein levels.

3.3. GI254023X and TAPI-0 treatments do not trigger cellular toxicity

At this stage, it was important to rule out the existence of a possible cellular toxicity induced by a prolonged exposure to these inhibitors as performed under our experimental conditions. With the aim of ruling out such a hypothesis, we measured the survival rate of SH-SY5Y cells following a 15 hour treatment without (control) or with GI254023X or TAPI-0 at 0.1, 1 and 10 μ M concentrations by means of the MTT test. The results showed that no notable changes were observed whatever the concentrations considered when compared to the non-treated cells (Figure 3), obviously indicating that GI254023X and TAPI-0 were not conveying toxicity under our experimental conditions as further confirmed by the absence of cell morphology differences between treatment conditions.

3.4. ADAM10 specific inhibition decreases DRD4 and increases COMT, MAOA and MAOB at a transcriptional level

In order to establish whether the lessening of DRD4 protein levels mediated by ADAM10 specific inhibition was reflecting a down regulation of its transcription, we undertook to measure the impact of the treatment with GI254023X at the more efficient concentration (10 μ M) on the mRNA levels of DRD2 and DRD4 by RT-PCR.

Additionally and in order to broaden our field of investigation, we also examined the transcriptional patterns of several other important components of the dopaminergic system. After the careful checking of which of such genes were expressed in SH-SY5Y cells (<https://www.proteinatlas.org/>), we selected dopamine decarboxylase (DDC), dopamine- β -hydroxylase (DBH), monoamine oxidase (MAO) A and B as well as catechol-O-methyltransferase (COMT) for analysis.

The results first showed that, as observed at the protein level, GI254023X does not alter the amounts of DRD2 mRNA while significantly decreasing DRD4 mRNA levels (Figure 4A and B), thereby indicating that ADAM10 inhibition diminishes DRD4 by triggering some mechanisms leading to a modulation of its transcription. Regarding the regulation of some other elements playing important roles in dopaminergic transmission, we first did not evidence any effect of GI254023X treatment on the mRNA levels of the DDC and DBH enzymes (Figure 4C and D), thus indicating that ADAM10 inhibition most likely neither affects the synthesis of dopamine L-DOPA nor the conversion of dopamine to norepinephrine. Interestingly, however, we were able to note a significant stimulating effect of treatment with GI254023X on the transcription of three enzymes responsible for dopamine degradation, namely COMT, MAOA and MAOB (Figure 4E-G).

3.5. GI254023X triggers an increase in active PKA C α immunoreactivity

Finally, in order to correlate the observed GI254023X-mediated decrease in DRD4 expression with some DRD4-dependent downstream signaling events, we examined the effect of a loss of ADAM10 activity on the levels of the catalytic subunit α of PKA that is down regulated by this receptor via the inhibition of adenylate cyclase and the subsequent decrease in cAMP production. The results showed that GI254023X significantly and dose-dependently increased PKA C α protein immunoreactivity (Figure 5).

4. Discussion

Being a multifactorial complex disorder, the exact aetiology of AD is very difficult to pinpoint as multiple interactive pathways are involved. Nevertheless, it is nowadays largely consensual that a deregulation of the processing of β APP is the trigger of a cascade of events involving synergistically toxic A β species and hyperphosphorylated tau [32]. Since it takes

place at the very early stages of the disease, interfering with the differential processing of β APP by secretases has long been considered as a pertinent therapeutic way to combat AD pathology. On the one hand, the β -secretase BACE1, as the limiting factor of A β production, is a first line leakage through which the pathological cascades start penetrating and is therefore widely considered a therapeutic target of choice [33], although its involvement in the cleavage of other substrates supporting important physiological functions brings a downside to this postulate [34]. On the other hand, the non-amyloidogenic processing of β APP by α -secretase prevents A β formation and promotes, through the production of the sAPP α metabolite, neuroprotection, neurotrophism, memory performance, synaptic plasticity and neurogenesis [35]. Considering that α - and β -secretase compete for β APP processing, that β -secretase activity is increased both during normal aging [36] and in AD [37], and given the fact that reduced α -secretase and deficits in sAPP α levels were observed in AD patients [38], restoration of α -secretase activity can be seen as a vital aspect for AD therapeutic intervention [39]. In this context, ADAM10, the main neuronal physiological α -secretase [28], is centre stage to the non-amyloidogenic metabolism of β APP that can potentially cut short the early deleterious events leading to the disease.

Importantly, a certain number of previously reported observations support a probable implication of dopamine (DA) in AD. Firstly, the fact that lower levels of dopamine was reported in AD [13] together with the observation that one third of AD patients present extrapyramidal signs [40], strongly suggest that dopaminergic neurons undergo degeneration during the time course of the disease. Secondly, neurons from the nigrostriatal pathway are not only tightly associated with AD-related pathologic changes such as neurofibrillary tangles (NFT) and senile plaques [41-44], but also show decreased DA content. [45]. Thirdly, the mesocorticolimbic system, another major dopaminergic pathway involved in higher order mental functions, motivation, mood and emotional valence, was also found to undergo

atrophy [46]. Finally, additional works carried out in transgenic mouse models of AD have convincingly strengthen the link between the disease and DA system failure as shown by the fact that dopamine neuronal loss contributes to memory dysfunction in Tg2576 mice [47] while, conversely, the restoration of DA transmission alleviates memory and learning in TgCNRD8 [48] and in 3xTg-AD mice [49].

A role for some β APP-derived metabolites in modulating the dopaminergic system have been brought up in recent years. Thus, intracerebral injection of $A\beta_{42}$ oligomers (produced from the amyloidogenic β/γ processing of β APP) decrease cortical dopamine levels *in vivo* in mice [50] while sAPP α (issued from the non amyloidogenic α processing of β APP) increases by 30% DRD2 mRNA levels in rat hippocampal slice cultures [25]. In this context, we aimed to investigate the effect of ADAM10 inhibition on components of the dopaminergic system endogenously expressed in the human neuroblastoma SH-SY5Y cell line.

We first showed that the specific inhibition of ADAM10 by GI254023X, which as expected leads to a dose-dependent lessening of sAPP α production, has different impacts on the protein and mRNA levels of DRD2 and DRD4, two members of the D2-like family of dopamine receptors that are both implicated in memory functions and altered in AD. Thus, GI254023X specifically and dose-dependently reduced DRD4 immunoreactivity without modifying DRD2 levels. At the same time, quantitative PCR analysis of the impact of the GI254023X concentration producing maximum effect on DRD4 protein levels (10 μ M) went in the same direction with a significant decrease in DRD4 mRNAs and no effect on DRD2. Importantly, our observation that the specific inhibition of ADAM17 by TAPI-0 had no impact on both sAPP α production and DRD4 levels indicated, beyond the fact that the pharmacological inhibitions of two closely related protease from the same family convey distinct effects, that the reduction of DRD4 by GI254023X could putatively be due to a decrease in sAPP α production.

These results may appear contradictory to the finding that treatment with exogenous sAPP α triggers a 1.29-fold up-regulation of DRD2 mRNA levels [25]. This discrepancy could be explained by the implementation of different approaches aimed at modulating the levels of circulating sAPP α (pharmacological inhibition of α -secretase versus exogenous addition of sAPP α ; 15h versus 24h treatments) as well as the models used (human cultured neuroblastoma cells versus rat hippocampal slice cultures). Nonetheless, additional experiments would certainly help to precisely decipher the global implication of the non amyloidogenic processing of β APP on the expression profiles of dopaminergic receptors.

Our additional observation that GI254023X increases the availability of the catalytic subunit α of PKA (PKA C α) added further evidenced the impact of ADAM10 inhibition on DRD4 since these receptors inhibit this kinase via the repression of adenylate cyclase activity and the subsequent reduction in cAMP production. In the context of AD pathogenesis, it is interesting to note that PKA over activation has been shown to increase tau phosphorylation and oxidative stress [51] and to shorten neuronal dendrites in drosophila [52] and rats [53]. Moreover, it has been evidenced that hippocampal PKA over activation disrupts recognition and spatial memory [54]. It is also important to note here that the observed increase in PKA C α levels induced by GI254023X could result, independently of the inhibition of DRD4 expression, from a decrease in the GABA β receptor-dependent signaling pathway. Indeed, sAPP α having been clearly established as a ligand for GABA β R1a [55], it is expected that a decrease in its production will lead to an increase in PKA activation following the reduction in the inhibitory tone of these receptors on adenylate cyclase [56].

Beyond the effects observed on dopaminergic receptors, we have also established that GI254023X, at the concentration of 10 μ M that drastically impairs sAPP α production, also increased the mRNA levels of the three principal dopamine-degrading enzymes COMT, MAOA and MAOB. It has to be underline here that these three enzymes have been

genetically and/or biochemically associated with AD. Thus, the COMT GG genotype (Val/Val) at position 158, where there is a single nucleotide polymorphism (SNP) (G/A; Val/Met), with the Val allele exhibiting a 3- to 4-fold increase in enzyme activity compared to Met, is synergistically associated with the APOE ϵ 4 allele in increasing the risk of AD and mild cognitive impairment (MCI) [57]. In addition, several works have pinpointed some links between MAOA and AD. Firstly, the levels of MAOA mRNA are increased in the frontal cortex of AD patients [58]. Secondly, an association of MAOA polymorphism (GT dinucleotide repeat in MAOA allele 113 gene) with AD has been evidenced [59]. Finally, a promoter polymorphism (high number of tandem repeats) in the MAOA gene was associated with higher MAOA gene expression and activity in AD patients [60]. Regarding MAOB, it has been shown that its activity was increased up to three-fold in the temporal, parietal and frontal cortices of AD cases when compared with controls [61]. Moreover, it has been recently evidenced that MAOB levels were higher in the frontal cortex, hippocampus CA1 and entorhinal cortex of AD brain than in controls, that the enzyme is a γ -secretase-associated protein and that intraneuronal $A\beta_{42}$ levels correlated with MAOB levels [62]. Importantly, this molecular and genetic evidence has recently been reinforced by bioinformatics studies using microarray datasets that have detected higher expression of MAOA, MAOB and COMT in the brain of AD patients when compared to control individuals [63-65] and modified COMT expression in the hippocampus of AD patients [66]. Furthermore, a meta-analytic review has also reported a significant increase in hippocampal MAOB expression in AD [67]. Altogether and in line with our results, these data support the idea that during the time course of AD, an excess in MAOA, MAOB and COMT activities could contribute to an exacerbated dopamine metabolism, thus designating these enzymes as a possible therapeutic targets for the treatment of the disease [68].

5. Conclusions

Altogether, our results established that ADAM10 specific inhibition by GI254023X triggers an overall dopaminergic tonus breakdown manifested on one hand by a decrease in DRD4 expression leading to an augmentation of the levels of the catalytic unit α of PKA and on the other hand to an increase in the levels of the dopamine-degrading enzymes that altogether could account for some of the cognitive and behavioral impairments observed in the course of AD (Figure 6).

In conclusion, our present study sheds new light on the mechanisms likely to induce an alteration of dopaminergic transmission during the development of AD and suggests ADAM10 as an element that could participate in this process. In a near future, it will first be of interest to correlate the herein observed effects on DRD4, COMT, MAOA and MAOB under GI254023X-mediated inhibition with an increase in the amyloidogenic processing of β APP given that the modulation of ADAM10 activity is accompanied by changes in $A\beta$ production [69]. Secondly, it will be necessary to determine whether the effects observed under GI254023X treatments are imputable to a decrease in sAPP α production or rely on some other ADAM10-dependent mechanisms involving the metabolism of one or more of its multiple other substrates [70]. This would undoubtedly help identifying the key mechanistic insights through which the inhibition of ADAM10 catalytic activity operates on the dopaminergic system.

CRedit authorship contribution statement

Subhamita Maitra: Conceptualization, Investigation, Methodology, Data curation, Writing – original draft. **Bruno Vincent:** Conceptualization, Formal analysis, Supervision, Funding acquisition, Project administration, Writing – review & editing.

Acknowledgements

We would like to thank Dr Narisorn Kitiyanant (Institute of Molecular Biosciences, Mahidol University, Thailand) for providing us with the SH-SY5Y cell line and Prof. Duncan R. Smith for his kind gift of GAPDH and PKA antibodies and MTT assay reagents. This work was supported by Mahidol University (NDFR 13/2564) and The Thailand Research Fund (BRG6180002). SM was supported by a Mahidol University postdoctoral research sponsorship.

Declarations of interest: none

References

- [1] Jahn, H. Memory loss in Alzheimer's disease. *Dialogues Clin. Neurosci.* **2013**, *15*, 445-454. <https://doi.org/10.31887/dcns.2013.15.4/hjahn>
- [2] Lanctôt, K.L.; Amatniek, J.; Ancoli-Israel, S.; Arnold, S.E.; Ballard, C.; Cohen-Mansfield, J.; Ismaili, Z.; Lyketsos, C.; Miller, D.S.; Musiek, E.; Osorio, R.; Rosenberg, P.B.; Satlin, A.; Steffens, D.; Tariot, P.; Bain, L.J.; Carillo, M.C.; Hendrix, J.A.; Jurgens, H.; Boot, B. Neuropsychiatric signs and symptoms of Alzheimer's disease: New treatment paradigms. *Alzheimers Dement. (NY)* **2017**, *3*, 440-449. <https://doi.org/10.1016/j.trci.2017.07.001>
- [3] Kim, B.; Noh, G.O.; Kim, K. Behavioural and psychological symptoms of dementia in patients with Alzheimer's disease and family caregiver burden: a path analysis. *BMC Geriatr.* **2021**, *21*:160. <https://doi.org/10.1186/s12877-021-02109-w>
- [4] Ropacki, S.A.; Jeste, D.V. Epidemiology of and risk factors for psychosis of Alzheimer's disease: a review of 55 studies published from 1990 to 2003. *Am. J. Psychiatry* **2005**, *162*, 2022-2030. <https://doi.org/10.1176/appi.ajp.162.11.2022>

- [5] Zhao, Q.F.; Tan, L.; Wang, H.F.; Jiang, T.; Tan, M.S.; Tan, L.; Xu, W.; Li, J.Q.; Wang, J.; Lai, T.J.; Yu, J.T. The prevalence of neuropsychiatric symptoms in Alzheimer's disease: Systematic review and meta-analysis. *J. Affect. Disord.* **2016**, *190*, 264-271. <https://doi.org/10.1016/j.jad.2015.09.069>
- [6] Jeste, D.V.; Finkel, S.I. Psychosis of Alzheimer's disease and related dementias. Diagnostic criteria for a distinct syndrome. *Am. J. Geriatr. Psychiatry* **2000**, *8*, 29-34. <https://doi.org/10.1097/00019442-200002000-00004>
- [7] Koppel, J.; Sunday, S.; Goldberg, T.E.; Davies, P.; Christen, E.; Greenwald, B.S.; Alzheimer's Disease Neuroimaging Initiative. Psychosis in Alzheimer's disease is associated with frontal metabolic impairment and accelerated decline in working memory: findings from the Alzheimer's disease Neuroimaging Initiative. *Am. J. Geriatr. Psychiatry* **2014**, *22*, 698-707. <https://doi.org/10.1016/j.jagp.2012.10.028>
- [8] Ferreira, M.d.C.; Abreu, M.J.; Machado, C.; Santos, B.; Machado, A.; Costa, A.S. Neuropsychiatric profile in early versus late onset Alzheimer's disease. *Am. J. Alzheimers Dis. Other Demen.* **2018**, *33*, 93-99. <https://doi.org/10.1177/1533317517744061>
- [9] Connors, M.H.; Ames, D.; Woodward, M.; Brodaty, H. Psychosis and clinical outcomes in Alzheimer disease: A longitudinal study. *Am. J. Geriatr. Psychiatry* **2018**, *26*, 304-313. <https://doi.org/10.1016/j.jagp.2017.10.011>
- [10] DeMichele-Sweet, M.A.; Sweet, R.A. Genetics of psychosis in Alzheimer's disease: a review. *J. Alzheimers Dis.* **2010**, *19*, 761-780. <https://doi.org/10.3233/jad-2010-1274>
- [11] Vermeiren, Y.; Van Dam, D.; Aerts, T.; Engelborghs, S.; De Deyn, P.P. Brain-region-specific monoaminergic correlates of neuropsychiatric symptoms in Alzheimer's disease. *J. Alzheimers Dis.* **2014**, *41*, 819-833. <https://doi.org/10.3233/jad-140309>

- [12] Martorana, A.; Koch, G. Is dopamine involved in Alzheimer's disease? *Front. Aging Neurosci.* **2014**, *6*:252. <https://doi.org/10.3389/fnagi.2014.00252>
- [13] Pan, X.; Kaminga, A.C.; Wen, S.W.; Wu, X.; Acheampong, K.; Liu, A. Dopamine and dopamine receptors in Alzheimer's disease: A systematic review and network meta-analysis. *Front. Aging Neurosci.* **2019**, *11*:175. <https://doi.org/10.3389/fnagi.2019.00175>
- [14] Nobili, A.; Latagliata, E.C.; Viscomi, M.T.; Cavalucci, V.; Cutuli, D.; Giacobuzzo, G.; Krashia, P.; Rizzo, F.R.; Marino, R.; Federici, M.; De Bartolo, P.; Aversa, D.; Dell'Acqua, M.C.; Cordella, A.; Sancanti, M.; Keller, F.; Petrosini, L.; Puglisi-Allegra, S.; Mercuri, N.B.; Coccorello, R.; Berretta, N.; D'Amelio, M. Dopamine neuronal loss contributes to memory and reward dysfunction in a model of Alzheimer's disease. *Nature Commun.* **2017**, *8*:14727. <https://doi.org/10.1038/ncomms14727>
- [15] Ambrée, O.; Richter, H.; Sachser, N.; Lewejohann, L.; Dere, E.; de Souza Silva, M.A.; Herring, A.; Keyvani, K.; Paulus, W.; Schabitz, W.R. Levopoda ameliorates learning and memory deficits in a murine model of Alzheimer's disease. *Neurobiol. Aging* **2009**, *30*, 1192-1204. <https://doi.org/10.1016/j.neurobiolaging.2007.11.010>
- [16] Guzman-Ramos, K.; Moreno-Castilla, P.; Castro-Cruz, M.; McGaugh, J.L.; Martinez-Coria, H.; LaFerla, F.M.; Bermudez-Rattoni, F. Restoration of dopamine release deficits during object recognition memory acquisition attenuates cognitive impairment in a triple transgenic mice model of Alzheimer's disease. *Learn. Mem.* **2012**, *19*, 453-460. <https://doi.org/10.1101/lm.026070.112>
- [17] Saab, B.J.; Georgiou, J.; Nath, A.; Lee, F.J.S.; Wang, M.; Michalon, A.; Liu, F.; Mansuy, I.M.; Roder, J.C. NCS-1 in the dentate gyrus promotes exploration, synaptic

- plasticity, and rapid acquisition of spatial memory. *Neuron* **2009**, *63*, 643-656.
<https://doi.org/10.1016/j.neuron.2009.08.014>
- [18] Martorana, A.; Di Lorenzo, F.; Esposito, Z.; Lo Giudice, T.; Bernardi, G.; Caltagirone, C.; Koch, G. Dopamine D₂-agonist rotigotine effects on cortical excitability and central cholinergic transmission in Alzheimer's disease patients. *Neuropharmacology* **2013**, *64*, 108-113.
<https://doi.org/10.1016/j.neuropharm.2012.07.015>
- [19] Tiernan, C.T.; Ginsberg, S.D.; He, B.; Ward, S.M.; Guillozet-Bongaarts, A.L.; Kanaan, N.M.; Mufson, E.J.; Counts, S.E. Pretangle pathology within cholinergic nucleus basalis neurons coincides with neurotrophic and neurotransmitter receptor gene dysregulation during the progression of Alzheimer's disease. *Neurobiol. Dis.* **2018**, *117*, 125-136. <https://doi.org/10.1016/j.nbd.2018.05.021>
- [20] Yee, D.M.; Braver, T.S. Interactions of motivation and cognitive control. *Curr. Opin. Behav. Sci.* **2018**, *19*, 83-90. <https://doi.org/10.1016/j.cobeha.2017.11.009>
- [21] Bernaerts, P.; Tirelli, E. Facilitatory effect of the dopamine D4 receptor agonist PD168,077 on memory consolidation of an inhibitory avoidance learned response in C57BL/6J mice. *Behav. Brain Res.* **2003**, *142*, 41-52. [https://doi.org/10.1016/s0166-4328\(02\)00371-6](https://doi.org/10.1016/s0166-4328(02)00371-6)
- [22] Perez, S.E.; Lazarov, O.; Koprach, J.B.; Chen, E.Y.; Rodriguez-Menendez, V.; Lipton, J.W.; Sisodia, S.S.; Mufson, E.J.; Nigrostriatal dysfunction in familial Alzheimer's disease-linked APP^{swe}/PS1^{DeltaE9} transgenic mice. *J. Neurosci.* **2005**, *25*, 10220-10229. <https://doi.org/10.1523/jneurosci.2773-05.2005>
- [23] Palop, J.J.; Mucke, L. Amyloid- β -induced neuronal dysfunction in Alzheimer's disease: from synapses toward neural networks. *Nature Neurosci.* **2010**, *13*, 812-818.
<https://doi.org/10.1038/nn.2583>

- [24] Lilja, A.M.; Porras, O.; Storelli, E.; Nordberg, A.; Marutle, A. Functional interactions of fibrillar and oligomeric amyloid- β with alpha7 nicotinic receptors in Alzheimer's disease. *J. Alzheimers Dis.* **2011**, *23*, 335-347. <https://doi.org/10.3233/jad-2010-101242>
- [25] Ryan, M.M.; Morris, G.P.; Mockett, B.G.; Bourne, K.; Abraham, W.C.; Tate, W.P.; Williams, J.M. Time-dependent changes in gene expression induced by secreted amyloid precursor protein-alpha in the rat hippocampus. *BMC Genomics* **2013**, *14*:376. <https://doi.org/10.1186/1471-2164-14-376>
- [26] Hundhauser, C.; Misztela, D.; Berkhout, T.A.; Broadway, N.; Saftig, P.; Reiss, K.; Hartmann, D.; Fahrenholz, F.; Postina, R.; Matthews, V.; Kallen, K.J.; Rose-John, S.; Ludwig, A. The disintegrin-like metalloproteinase ADAM10 is involved in constitutive cleavage of CX3CL1 (fractalkine) and regulates CX3CL1-mediated cell-cell adhesion. *Blood* **2003**, *102*, 1186-1195. <https://doi.org/10.1182/blood-2002-12-3775>
- [27] Ludwig, A.; Hundhausen, C.; Lambert, M.H.; Broadway, N.; Andrews, R.C.; Bickett, D.M.; Leesnitzer, M.A.; Becherer, J.D. Metalloproteinase inhibitors for the disintegrin-like metalloproteinases ADAM10 and ADAM17 that differentially block constitutive and phorbol ester-inducible shedding of cell surface molecules. *Comb. Chem. High Throughput Screen.* **2005**, *8*, 161-171. <https://doi.org/10.2174/1386207053258488>
- [28] Kuhn, P.H.; Wang, H.; Dislich, B.; Colombo, A.; Zeitschel, U.; Ellwart, J.W.; Kremmer, E.; Roßner, S.; Lichtenthaler, S.F. ADAM10 is the physiological relevant constitutive α -secretase of the amyloid precursor protein in primary neurons. *EMBO J.* **2010**, *29*, 3020-3032. <https://doi.org/10.1038/emboj.2010.167>

- [29] Jacobsen, K.T.; Adlerz, L.; Multhaup, G.; Iverfeldt, K. Insulin-like growth factor (IGF-1)-induced processing of amyloid- β precursor protein (APP) and APP-like protein 2 is mediated by different metalloproteinases. *J. Biol. Chem.* **2010**, *285*, 10223-10231. <https://doi.org/10.1074/jbc.m109.038224>
- [30] Maitra, S.; Sornjai, W.; Smith, D.R.; Vincent, B. Phenanthroline impairs β APP processing and expression, increases p53 protein levels and induces cell cycle arrest in human neuroblastoma cells. *Brain Res. Bull.* **2021**, *170*, 29-38. <https://doi.org/10.1016/j.brainresbull.2021.02.001>
- [31] Buxbaum, J.D.; Liu, K.N.; Luo, Y.; Slack, J.L.; Stocking, K.L.; Peschon, J.J.; Johnson, R.S.; Castner, B.J.; Ceretti, D.P.; Black, R.A. Evidence that tumor necrosis factor α -converting enzyme is involved in regulated α -secretase cleavage of the Alzheimer amyloid protein precursor. *J. Biol. Chem.* **1998**, *273*, 27765-27767. <https://doi.org/10.1074/jbc.273.43.27765>
- [32] Ittner, A.; Ittner, L.M. Dendritic tau in Alzheimer's disease. *Neuron* **2018**, *99*, 13-27. <https://doi.org/10.1016/j.neuron.2018.06.003>
- [33] Vassar, R.; Kuhn, P.H.; Haass, C.; Kennedy, M.E.; Rajendran, L.; Wong, P.C.; Lichtenthaler, S.F. Function, therapeutic potential and cell biology of BACE proteases: current status and future prospects. *J. Neurochem.* **2014**, *130*, 4-28. <https://doi.org/10.1111/jnc.12715>
- [34] Barao, S.; Moechars, D.; Lichtenthaler, S.F.; De Strooper, B. BACE1 physiological functions may limit its use as therapeutic target for Alzheimer's disease. *Trends Neurosci.* **2016**, *39*, 158-169. <https://doi.org/10.1016/j.tins.2016.01.003>
- [35] Mockett, B.G.; Richter, M.; Abraham, W.C.; Muller U.C. Therapeutic potential of secreted amyloid precursor protein APP α . *Front. Mol. Neurosci.* **2017**, *10*:30. <https://doi.org/10.3389/fnmol.2017.00030>

- [36] Fukumoto, H.; Rosene, D.L.; Moss, M.B.; Raju, S., Hyman, B.T.; Irizarry, M.C. β -Secretase activity increases with aging in human, monkey, and mouse brain. *Am. J. Pathol.* **2004**, *164*, 719-725. [https://doi.org/10.1016/s0002-9440\(10\)63159-8](https://doi.org/10.1016/s0002-9440(10)63159-8)
- [37] Ahmed, R.R.; Holler, C.J.; Webb, R.L.; Li, F.; Beckett, T.L.; Murphy, M.P. BACE1 and BACE2 enzymatic activities in Alzheimer's disease. *J. Neurochem.* **2010**, *112*, 1045-1053. <https://doi.org/10.1111/j.1471-4159.2009.06528.x>
- [38] Colciaghi, F.; Borroni, B.; Pastorino, L.; Marcello, E.; Zimmermann, M.; Cattabeni, F.; Padovani, A.; Di Luca, M. α -secretase ADAM10 as well as α APPs is reduced in platelets and CSF of Alzheimer disease patients. *Mol. Med.* **2002**, *8*, 67-74. <http://www.ncbi.nlm.nih.gov/pmc/articles/pmc2039975/>
- [39] Vincent, B.; Govitrapong, P. Activation of the α -secretase processing of A β PP as a therapeutic approach in Alzheimer's disease. *J. Alzheimers Dis.* **2011**, *24 Suppl 2*, 75-94. <https://doi.org/10.3233/jad-2011-110218>
- [40] Lopez, O.L.; Wisniewski, S.R.; Becker, J.T.; Boller, F.; DeKosky, S.T. Extrapyrarnidal signs in patients with probable Alzheimer disease. *Arch. Neurol.* **1997**, *54*, 969-975. <https://doi.org/10.1001/archneur.1997.00550200033007>
- [41] Gibb, W.R.; Mountjoy, C.Q.; Mann, D.M.; Lees, A.J. The substantia nigra and ventral tegmental area in Alzheimer's disease and Down syndrome. *J. Neurol. Neurosurg. Psychiatry* **1989**, *52*, 193-200. <https://doi.org/10.1136/jnnp.52.2.193>
- [42] Selden, N.; Mesulam, M.M.; Geula, C. Human striatum: the distribution of neurofibrillary tangles in Alzheimer's disease. *Brain Res.* **1994**, *648*, 327-331. [https://doi.org/10.1016/0006-8993\(94\)91136-3](https://doi.org/10.1016/0006-8993(94)91136-3)
- [43] Burns, J.M.; Galvin, J.E.; Roe, C.M.; Morris, J.C.; McKeel, D.W. The pathology of the substantia nigra in Alzheimer disease with extrapyramidal signs. *Neurology* **2005**, *64*, 1397-1403. <https://doi.org/10.1212/01.wnl.0000158423.05224.7f>

- [44] Hsu, T.W.; Fuh, J.L.; Wang, D.W.; Chen L.F.; Chang, C.J.; Huang, W.S.; Wu, H.M.; Guo, W.Y. Disrupted metabolic connectivity in dopaminergic and cholinergic networks at different stages of dementia from 18 F-FDG PET brain persistent homology network. *Sci. Rep.* **2021**, *11(1)*:5396. <https://doi.org/10.1038/s41598-021-84722-8>
- [45] Storga, D.; Vrecko, K.; Birkmayer, J.G.; Reibnegger, G. Monoaminergic neurotransmitters, their precursors and metabolites in brains of Alzheimer patients. *Neurosci. Lett.* **1996**, *203*, 29-32. [https://doi.org/10.1016/0304-3940\(95\)12256-7](https://doi.org/10.1016/0304-3940(95)12256-7)
- [46] Iaccarino, L.; Sala, A.; Caminiti, S.P.; Presotto, L.; Perani, D.; Alzheimer's Disease Neuroimaging Initiative. In vivo MRI structural and PET metabolic connectivity study of dopamine pathways in Alzheimer's disease. *J. Alzheimers Dis.* **2020**, *75*, 1003-1016. <https://doi.org/10.3233/jad-190954>
- [47] Browman, K.E.; Curzon, P.; Pan, J.B.; Molesky, A.L.; Komater, V.A.; Decker, M.W.; Brioni, J.D.; Moreland, R.B.; Fox, G.B. A-412997, a selective dopamine D4 agonist, improves cognitive performance in rats. *Pharmacol. Biochem. Behav.* **2005**, *82*, 148-155. <https://doi.org/10.1016/j.pbb.2005.08.002>
- [48] Woolley, M.L.; Waters, K.A.; Reavill, C.; Bull, S.; Lacroix, L.P.; Martyn, A.J.; Hutcheson, D.M.; Valerio, E.; Bate, S.; Jones, D.N.C.; Dawson, L.A. Selective dopamine D4 receptor agonist (A-412997) improves cognitive performance and stimulates motor activity without influencing reward-related behavior in rat. *Behav. Pharmacol.* **2008**, *19*, 765-776. <https://doi.org/10.1097/fbp.0b013e32831c3b06>
- [49] Ji, H.; Wang, Y.; Jiang, D.; Liu, G.; Xu, X.; Dai, D.; Zhou, X.; Cui, W.; Li, J.; Chen, Z.; Li, Y.; Zhou, D.; Zha, Q.; Zhuo, R.; Jiang, L.; Liu, Y.; Shen, L.; Zhang, B.; Xu, L.; Hu, H.; Zhang, Y.; Yin, H.; Duan, S.; Wang, Q. Elevated DRD4 promoter

- methylation increases the risk of Alzheimer's disease in males. *Mol. Med. Rep.* **2016**, *14*, 2732-2738. <https://doi.org/10.3892/mmr.2016.5560>
- [50] Moreno-Castilla, P.; Rodriguez-Duran, L.F.; Guzman-Ramos, K.; Barcenas-Femat, A.; Escobar, M.L.; Bermudez-Rattoni, F. Dopaminergic neurotransmission dysfunction induced by amyloid- β transforms cortical long-term potentiation into long-term depression and produces memory impairment. *Neurobiol. Aging* **2016**, *41*, 187-199. <https://doi.org/10.1016/j.neurobiolaging.2016.02.021>
- [51] Wang, D.L.; Ling, Z.Q.; Cao, F.Y.; Zhu, L.Q.; Wang, J.Z. Melatonin attenuates isoproterenol-induced protein kinase A overactivation and tau hyperphosphorylation in rat brain. *J. Pineal Res.* **2004**, *37*, 11-16. <https://doi.org/10.1111/j.1600-079x.2004.00130.x>
- [52] Copf, T. Developmental shaping of dendritic arbors in drosophila relies on tightly regulated intra-neuronal activity of protein kinase A (PKA). *Dev. Biol.* **2014**, *393*, 282-297. <https://doi.org/10.1016/j.ydbio.2014.07.002>
- [53] Xu, N.; Engbers, J.; Khaja, S.; Xu, L.; Clark, J.J.; Hamsen, M.R. Influence of cAMP and protein kinase A on neurite length from spinal ganglion neurons. *Hear Res.* **2012**, *283*, 33-44. <https://doi.org/10.1016/j.heares.2011.11.010>
- [54] Giralt, A.; Saavedra, A.; Carreton, O.; Xifro, X.; Alberch, J.; Perez-Navarro, E. Increased PKA signaling disrupts recognition memory and spatial memory: role in Huntington's disease. *Hum. Mol. Genet.* **2011**, *20*, 4232-4247. <https://doi.org/10.1093/hmg/ddr351>
- [55] Rice, H.C.; de Malmazet, D.; Schreurs, A.; Frere, S.; Van Molle, I.; Volkov, A.N.; Creemers, E.; Vertkin, I.; Nys, J.; Ranaivoson, F.M.; Comoletti, D.; Savas, J.N.; Remaut, H.; Balschun, D.; Wierda, K.D.; Slutsky, I.; Farrow, K.; De Strooper, B.; de Witt, J. Secreted amyloid- β precursor protein functions as a GABA β R1a ligand to

- modulate synaptic transmission. *Science* **2019**, *363*(6423):eaa04827.
<https://doi.org/10.1126/science.aao4827>
- [56] Bettler, B.; Kaupmann, K.; Mosbacher, J.; Gassmann, M. Molecular structure and physiological functions of GABAB receptors. *Physiol. Rev.* **2004**, *84*, 835-867.
<https://doi.org/10.1152/physrev.00036.2003>
- [57] Martinez, M.F.; Martin, X.E.; Alcelay, L.G.; Flores, J.C.; Uterga Valiente, J.M.; Juanbelta, B.I.; Gomez Beldarrain, M.A.; Lopez, J.M.; Gonzalez-Fernandez, M.C.; Salazar, A.M.; Gandarias, R.B.; Borda, S.I.; Marques, N.O.; Amillano, M.B.; Zabaleta, M.C.; de Pancorbo, M.M. The COMT Val158Met polymorphism as an associated risk factor for Alzheimer disease and mild cognitive impairment in APOE 4 carriers. *BMC Neurosci.* **2009**, *10*:125. <https://doi.org/10.1186/1471-2202-10-125>
- [58] Emilsson, L.; Saetre, P.; Balciuniene, J.; Castensson, A.; Cairns, N.; Jazin, E.E. Increased monoamine oxidase messenger RNA expression levels in frontal cortex of Alzheimer's disease patients. *Neurosci. Lett.* **2002**, *326*, 56-60.
[https://doi.org/10.1016/s0304-3940\(02\)00307-5](https://doi.org/10.1016/s0304-3940(02)00307-5)
- [59] Takehashi, M.; Tanaka, S.; Masliah, E.; Ueda, K. Association of monoamine oxidase A gene polymorphism with Alzheimer's disease and Lewy body variant. *Neurosci. Lett.* **2002**, *327*, 79-82. [https://doi.org/10.1016/S0304-3940\(02\)00258-6](https://doi.org/10.1016/S0304-3940(02)00258-6)
- [60] Wu, Y.H.; Fischer, D.F.; Swaab, D.F. A promoter polymorphism in the monoamine oxidase A gene is associated with the pineal MAOA activity in Alzheimer's disease patients. *Brain Res.* **2007**, *1167*, 13-19. <https://doi.org/10.1016/j.brainres.2007.06.053>
- [61] Saura, J.; Luque, J.M.; Cesura, A.M.; Da Prada, M.; Chan-Palay, V.; Huber, G.; Loffler, J.; Richards, J.G. Increased monoamine oxidase B activity in plaque-associated astrocytes of Alzheimer brains revealed by quantitative enzyme

- radioautography. *Neuroscience* **1994**, *62*, 15-30. <https://doi.org/10.1016%2F0306-4522%2894%2990311-5>
- [62] Schedin-Weiss, S.; Inoue, M.; Hromadkova, L.; Teranishi, Y.; Yamamoto, N.G.; Wiehager, B.; Bogdanovic, N.; Winblad, B.; Sandebring-Matton, A.; Frykman, S.; Tjernberg, L.O. Monoamine oxidase B is elevated in Alzheimer disease neurons, is associated with γ -secretase and regulates neuronal amyloid β -peptide levels. *Alzheimers Res. Ther.* **2017**, *9(1)*:57. <https://doi.org/10.1186/s13195-017-0279-1>
- [63] Li, X.; Wang, H.; Long, J.; Pan, G.; He, T.; Anichtchic, O.; Belshaw, R.; Albani, D.; Edison, P.; Green, E.K.; Scott, J. Systematic analysis and biomarker study for Alzheimer's disease. *Sci. Rep.* **2018**, *8(1)*:17394. <https://doi.org/10.1038/s41598-018-35789-3>
- [64] Yu, W.; Yu, W.; Yang, Y.; Lu, Y. Exploring the key genes and identification of potential diagnosis biomarkers in Alzheimer's disease using bioinformatics analysis. *Front. Aging Neurosci.* **2021**, *13*:602781. <https://doi.org/10.3389/fnagi.2021.602781>
- [65] Zhao, X.; Yao, H.; Li, X. Unearthing of key genes driving the pathogenesis of Alzheimer's disease via bioinformatics. *Front. Genet.* **2021**, *12*:641100. <https://doi.org/10.3389/fgene.2021.641100>
- [66] Ma, G.; Liu, M.; Du, K.; Zhong, X.; Gong, S.; Jiao, L.; Wei, M. Differential expression of mRNAs in the brain tissues of patients with Alzheimer's disease based on GEO expression profile and its clinical significance. *Biomed. Res. Int.* **2019**, *2019*:8179145. <https://doi.org/10.1155/2019/8179145>
- [67] Wang, N.; Zhang, Y.; Xu, L.; Jin, S. Relationship between Alzheimer's disease and the immune system: A meta-analysis of differentially expressed genes. *Front. Neurosci.* **2019**, *12*:1026. <https://doi.org/10.3389/fnins.2018.01026>

- [68] Cai, Z. Monoamine oxidase inhibitors: Promising therapeutic agents for Alzheimer's disease (Review). *Mol. Med. Rep.* **2014**, *9*, 1533-1541. <https://doi.org/10.3892/mmr.2014.2040>
- [69] Postina, R.; Schroeder, A.; Dewachter, I.; Bohl, J.; Schmitt, U.; Kojro, E.; Prinzen, C.; Endres, K.; Hiemke, C.; Blessing, M.; Flamez, P.; Dequenne, A.; Godaux, E.; van Leuven, F.; Fahrenholz, F. A disintegrin-metalloproteinase prevents amyloid plaque formation and hippocampal defects in an Alzheimer disease mouse model. *J. Clin. Invest.* **2004**, *113*, 1456-1464. <https://doi.org/10.1172/jci20864>
- [70] Vincent, B.; Checler, F. α -secretase in Alzheimer's disease and beyond: mechanistic, regulation and function in the shedding of membrane proteins. *Curr. Alzheimer Res.* **2012**, *9*, 140-156. <http://dx.doi.org/10.2174/156720512799361646>

Legends to figures

Figure 1. Effect of GI254023X on sAPP α production and β APP, ADAM10, DRD2 and DRD4 protein levels in human SH-SY5Y cells. Left panels illustrate representative gels of western blot analysis of sAPP α production in media (A) as well as β APP (A), ADAM10 (B), DRD2 (C) and DRD4 (D) and their respective GAPDH/ β -actin in lysates following treatment of cultured SH-SY5Y cells without (CT) or with the indicated concentrations of GI254023X for 15 hours. (B) Right panels show the statistical analysis of the data for sAPP α (E), β APP (F), ADAM10 (G), DRD2 (H) and DRD4 (I). Bars correspond to the densitometric analyses (β APP and ADAM10 being normalized with β -actin, DRD2 and DRD4 being normalized with GAPDH), are expressed as a percentage of control and are the means \pm SE of 11 (sAPP α), 9 (β APP, DRD2 and DRD4) or 6 (ADAM10) independent determinations. * $p \leq 0.05$; ** $p \leq 0.01$; # $p \leq 0.0001$; ns, non-statistically different ($p > 0.05$).

Figure 2. Effect of TAPI-0 on sAPP α production and β APP, ADAM17, DRD2 and DRD4 protein levels in human SH-SY5Y cells. Left panels illustrate representative gels of western blot analysis of sAPP α production in media (A) as well as β APP (A), ADAM17 (B), DRD2 (C) and DRD4 (D) and their respective GAPDH/ β -actin in lysates following treatment of cultured SH-SY5Y cells without (CT) or with the indicated concentrations of TAPI-0 for 15 hours. Right panels show the statistical analysis of the data for sAPP α (E), β APP (F), ADAM17 (G), DRD2 (H) and DRD4 (I). Bars correspond to the densitometric analyses (β APP and ADAM17 being normalized with β -actin, DRD2 and DRD4 being normalized with GAPDH), are expressed as a percentage of control and are the means \pm SE of 6 (β APP and ADAM17), 5 (sAPP α) or 3 (DRD2 and DRD4) independent determinations. ns, non-statistically different ($p > 0.05$). The hatched black line in (B) indicates a splicing of the original gels.

Figure 3. Effect of GI254023X and TAPI-0 on cellular toxicity in SH-SY5Y cells. Cells were incubated without (control, white bar) or with the indicated concentrations of GI254023X (A) or TAPI-0 (B) for 15 hours and cell viability was determined with the MTT assay. The results are expressed as the mean of 14 (A) or 11 (B) independent determinations. ns, non-statistically different ($p > 0.05$).

Figure 4. Effect of GI254023X on the mRNA levels of components of the dopaminergic system. Following treatment of SH-SY5Y cells with GI254023X (10 μ M) for 15 hours, DRD2 (A), DRD4 (B), DBH (C), DDC (D), COMT (E), MAOA (F) and MAOB (G) mRNA levels (normalized with GAPDH) were measured by real-time qPCR. Bars in black are expressed as a percentage of control (white bar) and are the means \pm SE of 12 to 18

independent determinations. ** $p \leq 0.01$; *** $p \leq 0.001$; # $p \leq 0.0001$; ns, non-statistically different ($p > 0.05$).

Figure 5. Effect of GI254023X on the levels of the catalytic unit α of PKA. (A) illustrates a representative gels of western blot analysis of the catalytic unit α of PKA and its corresponding GAPDH in lysates following treatment of cultured SH-SY5Y cells without (CT) or with the indicated concentrations of GI254023X for 15 hours. (B) shows the statistical analysis of the data. Bars correspond to the densitometric analyses (PKA C α being normalized with GAPDH), are expressed as a percentage of control and are the means \pm SE of 9 independent determinations. * $p \leq 0.05$; *** $p \leq 0.001$; ns, non-statistically different ($p > 0.05$).

Figure 6. Schematic representation of the effects of GI254023X on the dopaminergic system, their consequences on the dopaminergic transmission and their possible impact in promoting AD pathogenesis. (A) Illustration of the dopamine system under normal conditions. Dopamine (DA) is first synthesized in a two-step mechanism via the conversion of tyrosine into L-DOPA by tyrosine hydroxylase (TH) and the subsequent transformation of L-DOPA into dopamine by DOPA decarboxylase (DDC) in the presynaptic terminal of dopaminergic neurons (1). Dopamine can then either be converted into norepinephrine by dopamine- β -hydroxylase (DBH) (2) or sequestered into synaptic vesicles by the vesicular monoamine transporter 2 (VMAT2) (3) from where it is released in the synaptic cleft (4). After the binding of DA to its receptors located at the postsynaptic membrane (here only DRD2 and DRD4 are depicted) and the perpetuation of signaling transduction (5), it is recycled (via recapture by the dopamine transporter (DAT)) to the cytoplasm (6) where it can either reincorporate synaptic vesicles through VMAT2 (7) or be degraded by monoamine

oxidase A and B (MAOA and MAOB) and catechol-O-methyltransferase (COMT) (8). (B) Illustration of the changes observed in the dopaminergic system following specific ADAM10 inhibition. GI254023X treatment triggers two main effects. Firstly, it selectively reduces the expression/transcription of DRD4 (no effect on DRD2) thereby reducing DRD4-dependent signal transduction at the post-synaptic membrane (loss of DRD4-dependent inhibition of adenylate cyclase (AC) resulting in an increase of cAMP production and PKA activation). Secondly, it promotes the expression of the DA-degrading enzymes COMT, MAOA and MAOB, thus exacerbating DA breakdown, globally reducing DA concentration at the pre-synaptic terminal and at the synaptic cleft. As a whole, ADAM10 inhibition, via the above described effects, would perturb the entire dopamine cycle and would ultimately lead to cognitive deficits (decrease in DRD4-mediated working memory) as well as behavioral impairments that could altogether contribute to the development of AD pathology.

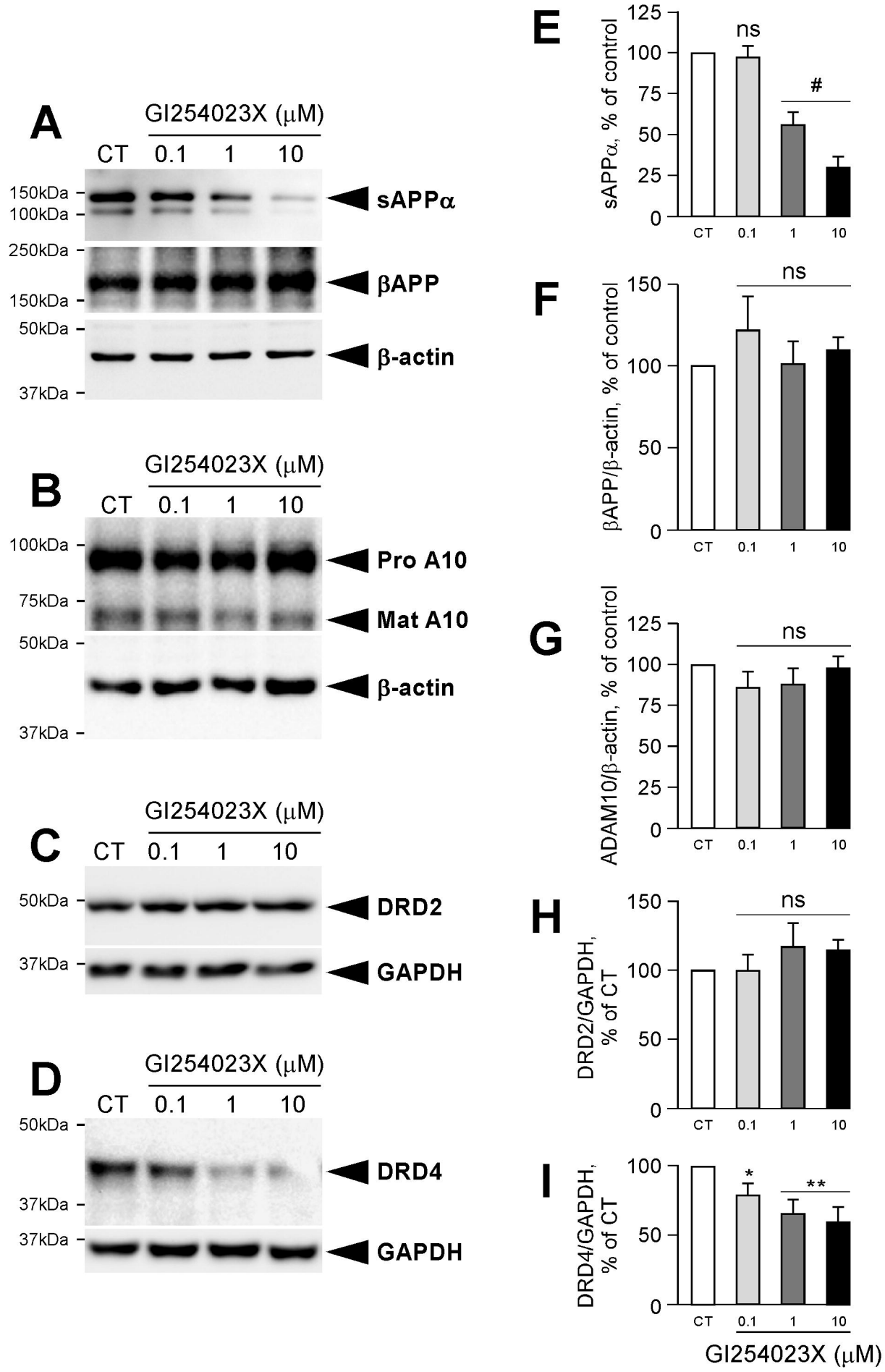


Figure 1

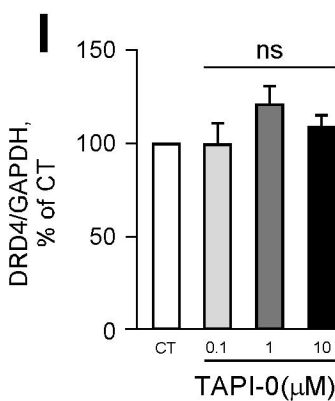
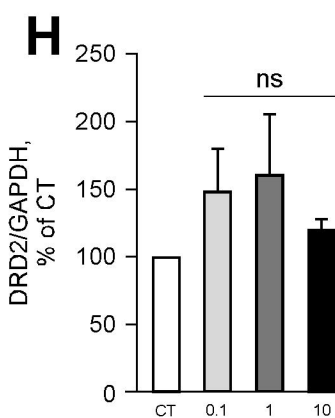
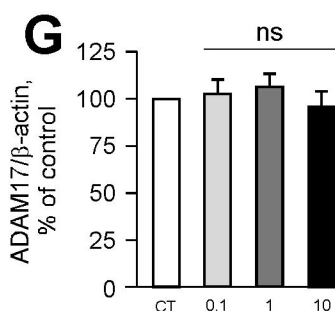
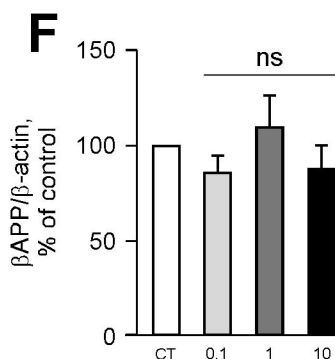
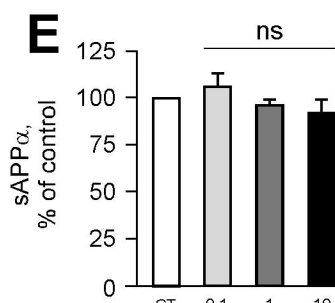
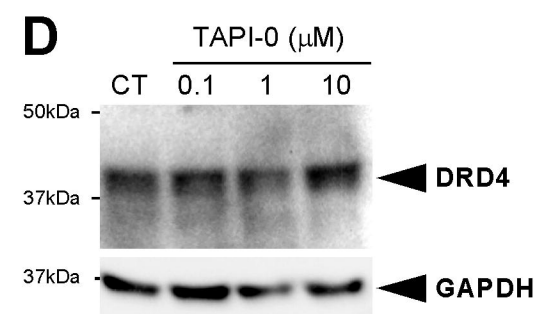
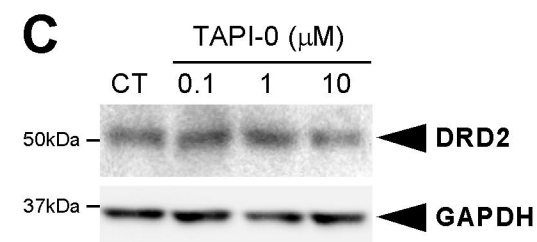
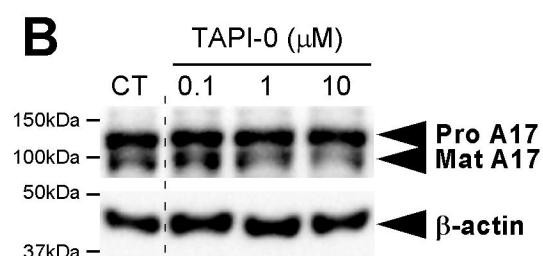
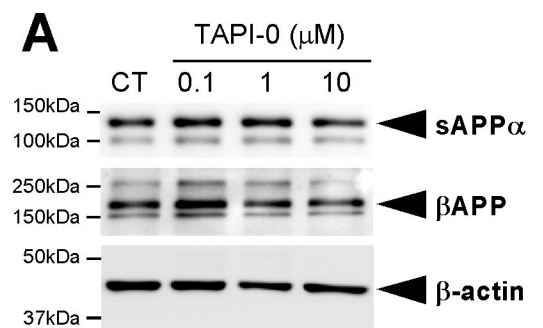


Figure 2

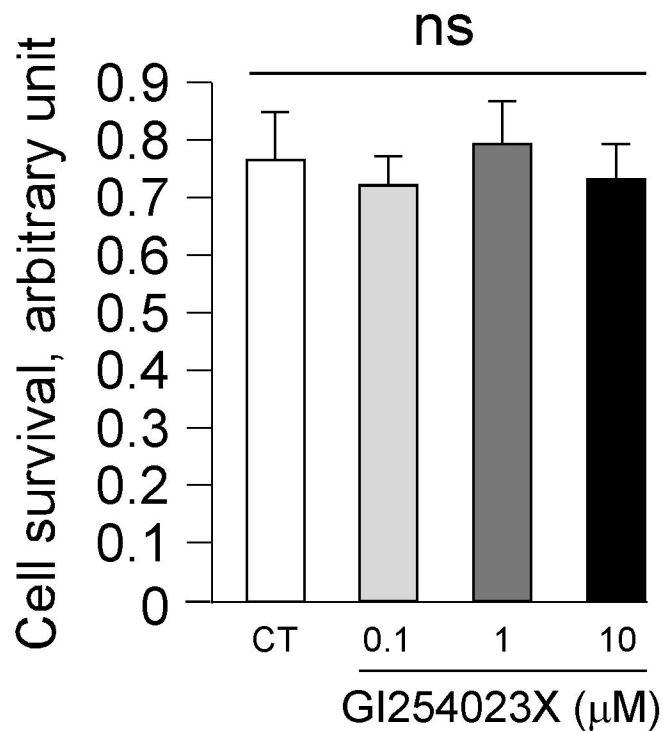
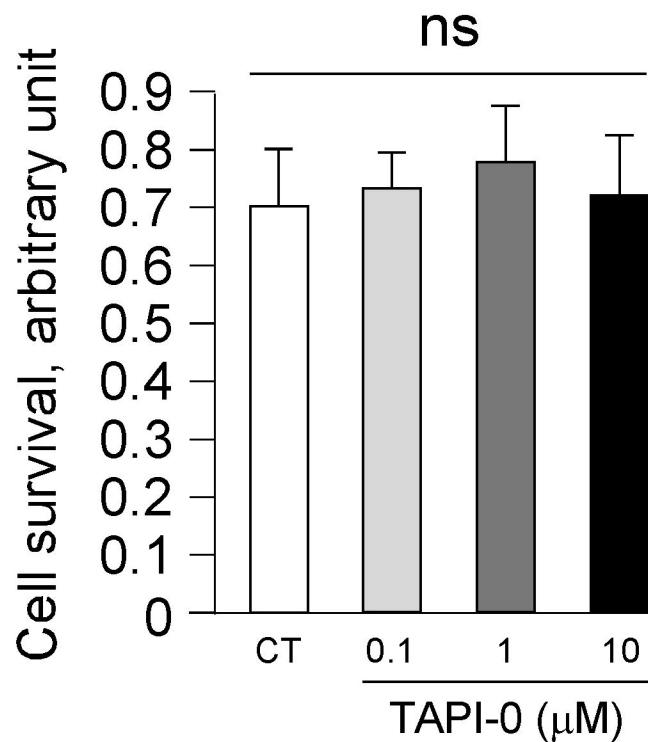
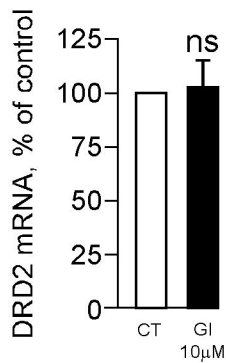
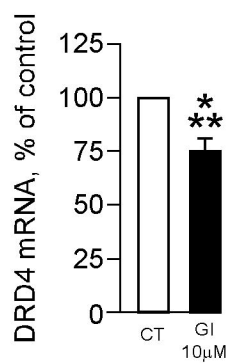
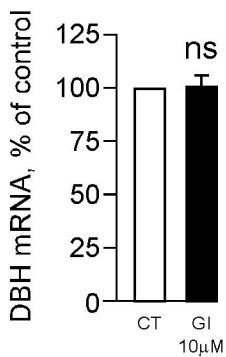
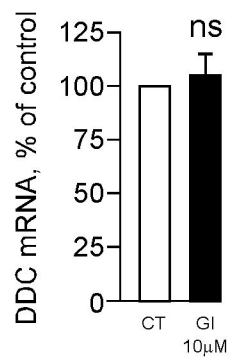
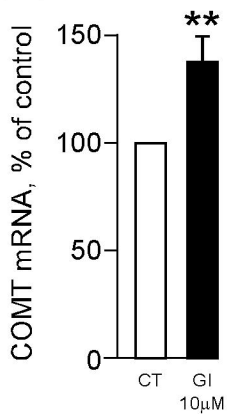
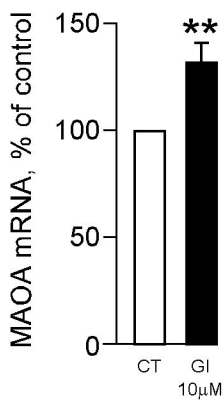
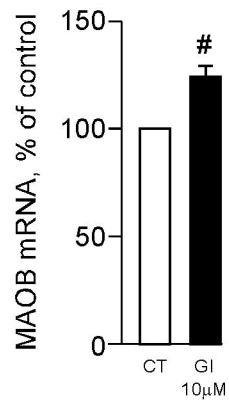
A**B**

Figure 3

A**B****C****D****E****F****G****Figure 4**

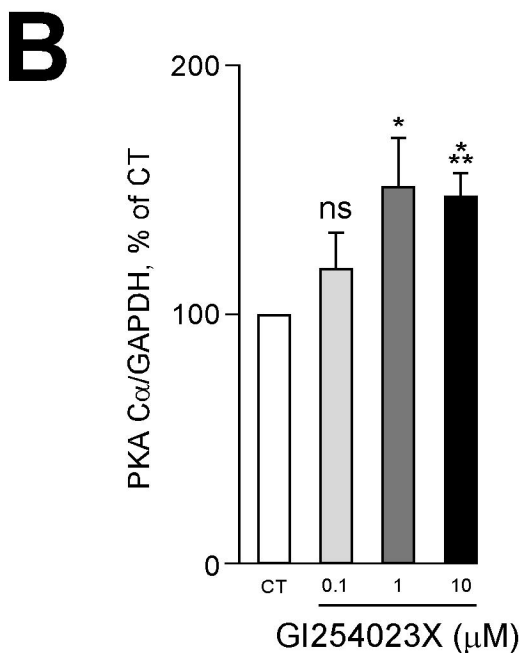
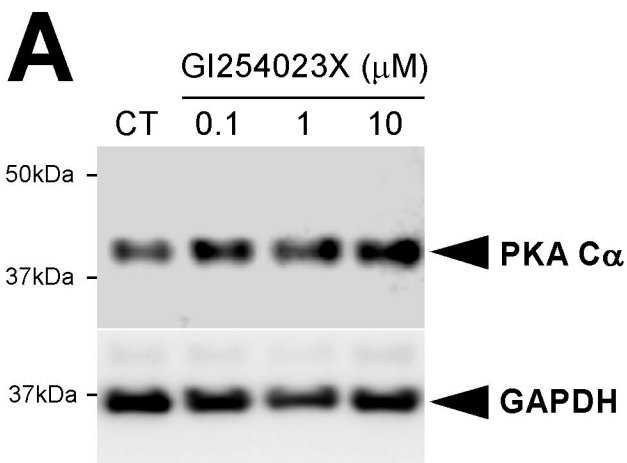
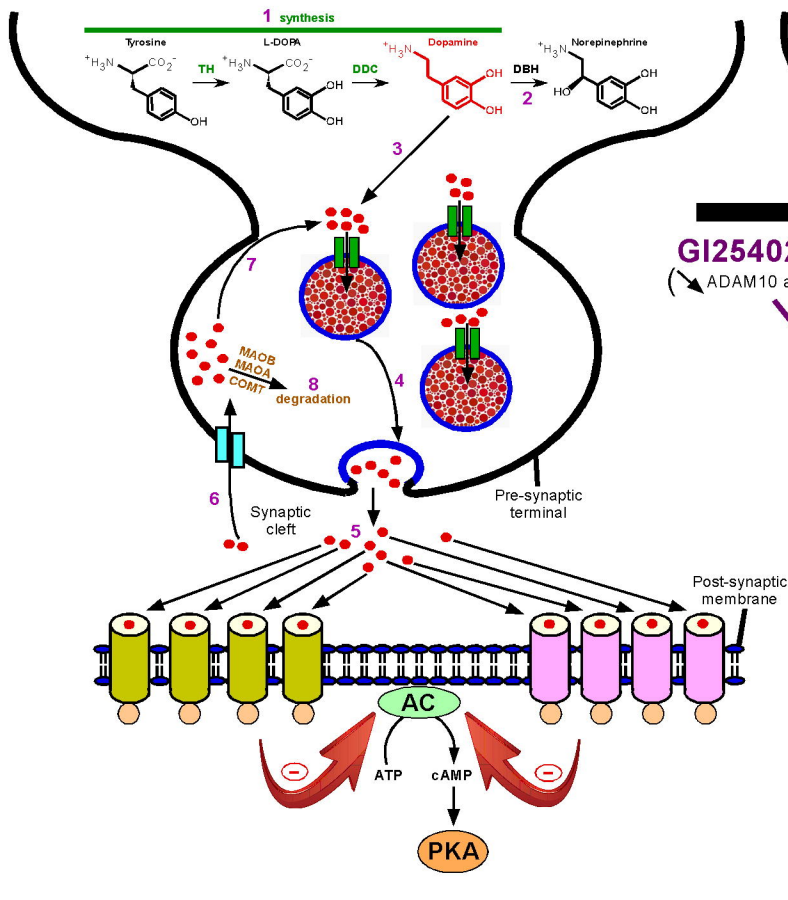
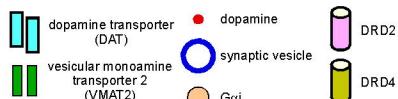
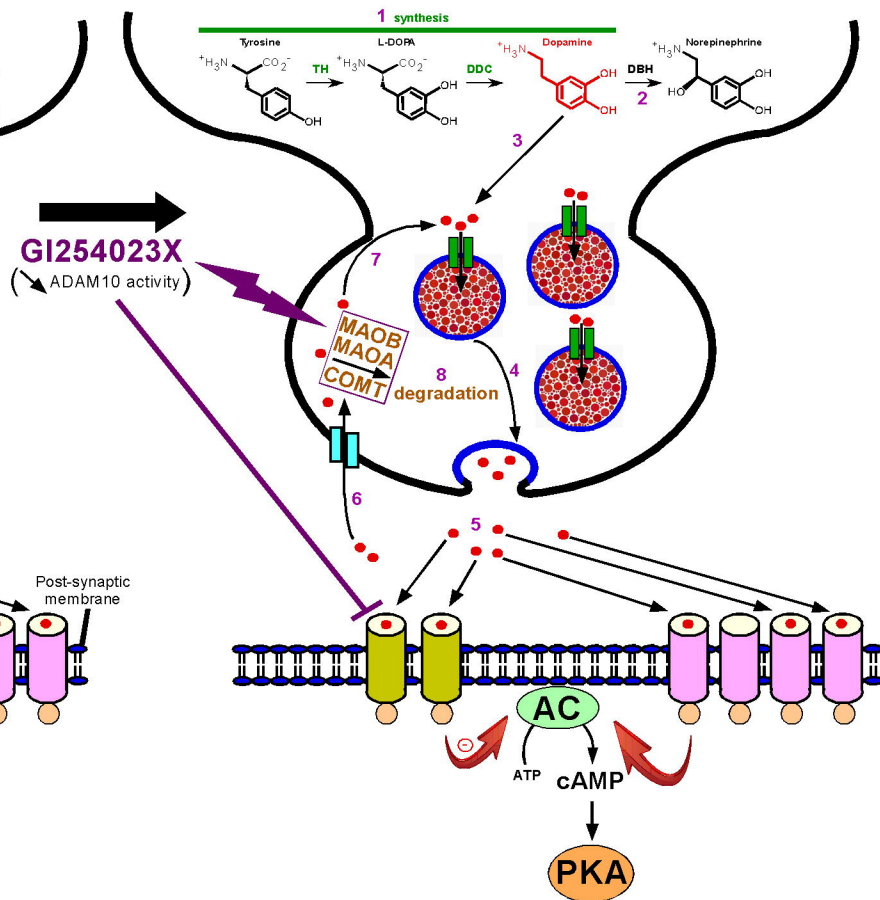


Figure 5

A

Normal dopaminergic transmission

**B**

Compromised dopaminergic system

Deficit in brain dopaminergic transmission

Working memory performances (via \downarrow of D4R)

Age-dependent neurological symptoms associated with dopamine deficits

Figure 6