



HAL
open science

High curvature sensors based on flexoelectric effect in soft semi-conducting polymer films

Julien Le Scornec, Benoit Guiffard

► **To cite this version:**

Julien Le Scornec, Benoit Guiffard. High curvature sensors based on flexoelectric effect in soft semi-conducting polymer films. EMRS (European Materials Research Society) 2023 Fall Meeting, Sep 2023, Warsaw, Poland. hal-04234281

HAL Id: hal-04234281

<https://hal.science/hal-04234281>

Submitted on 10 Oct 2023

HAL is a multi-disciplinary open access archive for the deposit and dissemination of scientific research documents, whether they are published or not. The documents may come from teaching and research institutions in France or abroad, or from public or private research centers.

L'archive ouverte pluridisciplinaire **HAL**, est destinée au dépôt et à la diffusion de documents scientifiques de niveau recherche, publiés ou non, émanant des établissements d'enseignement et de recherche français ou étrangers, des laboratoires publics ou privés.

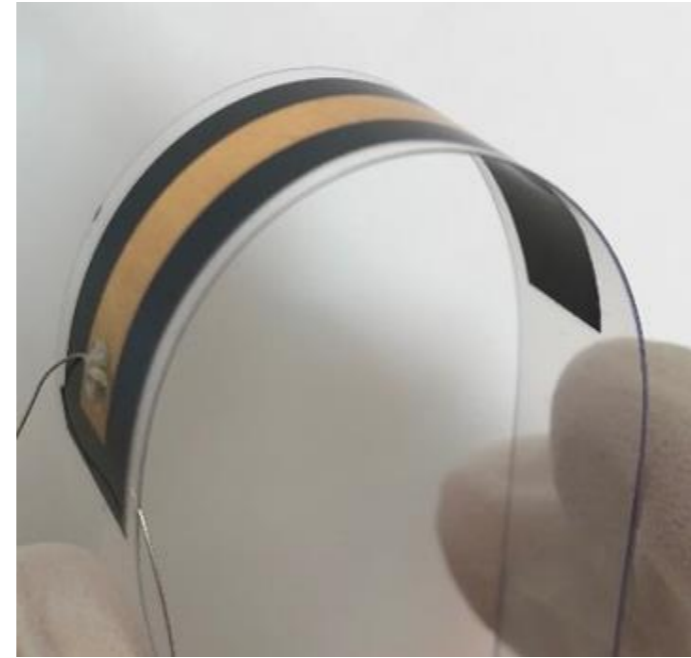
Julien Le Scornec^{1*} and Benoit Guiffard¹

¹IETR UMR CNRS 6164, UBL University, University of Nantes, 2 rue de la Houssinière, 44322 Nantes Cedex 3, France

*julien.le-scornec@univ-nantes.fr

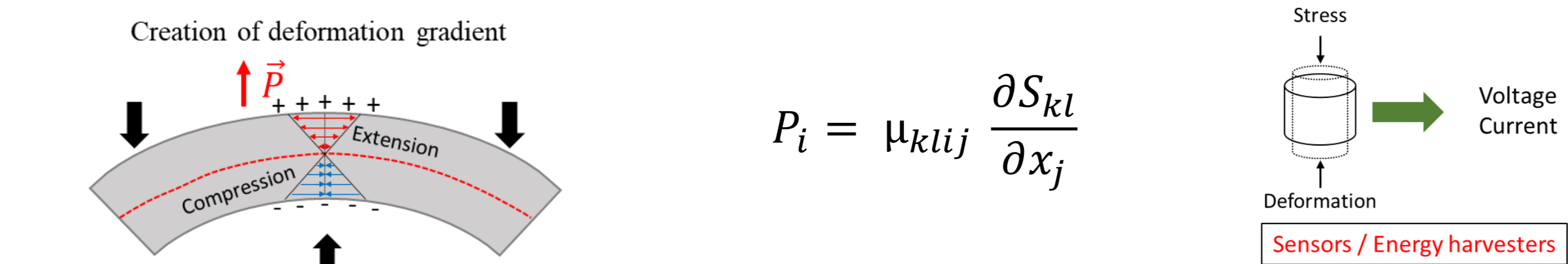
Context

- Objective** : To obtain a high-curvature sensor based on flexoelectric effect
- Solution** : PEDOT:PSS free standing thin film
- Lines of research** :
 - Optimize the flexoelectric sensor

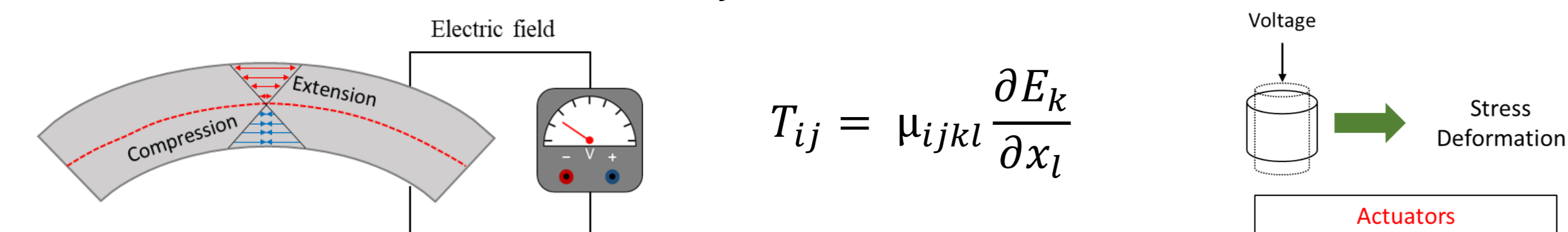


Flexoelectricity ? (direct and reverse effect)

Direct effect : electrical polarization P_i is induced by a deformation gradient



Reverse effect : Mechanical stress T_{ij} induced by an electric field gradient (E_K)



Piezoelectricity vs Flexoelectricity

Piezoelectricity

$$P_{piezo} = e \cdot S$$

S = deformation

No centrosymmetric materials
Electric field polarization : YES
Piezoelectric coefficient $e \approx 10 \text{ C/m}^2$
Effet de vieillissement
Deformation $S \sim 1\%$ S depends on the position of the sensor relative to the neutral axis!

Flexoelectricity

$$P_{flexo} = \mu \left(\frac{\partial S}{\partial x} \right) = \mu \cdot C$$

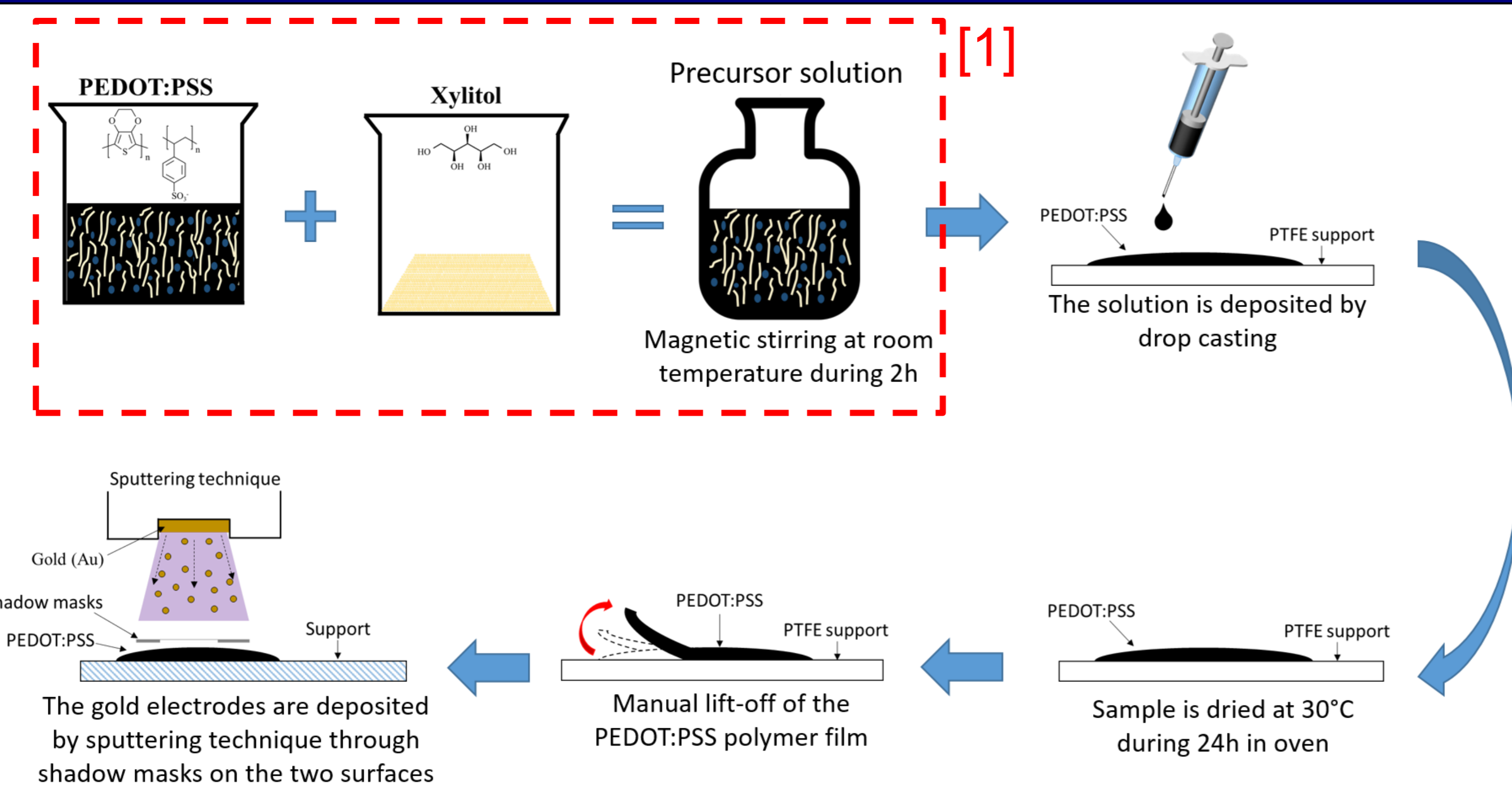
C = curvature

Universal coupling
NO
Flexoelectric coefficient $\mu \approx 10^{-4} \text{ C/m}$
Pas de vieillissement
Curvature $C = \frac{\partial S}{\partial x} \text{ to } 10^6 \text{ m}^{-1}$ C is constant throughout the thickness!

Curvature varies inversely with thickness and mechanical rigidity

Flexible films

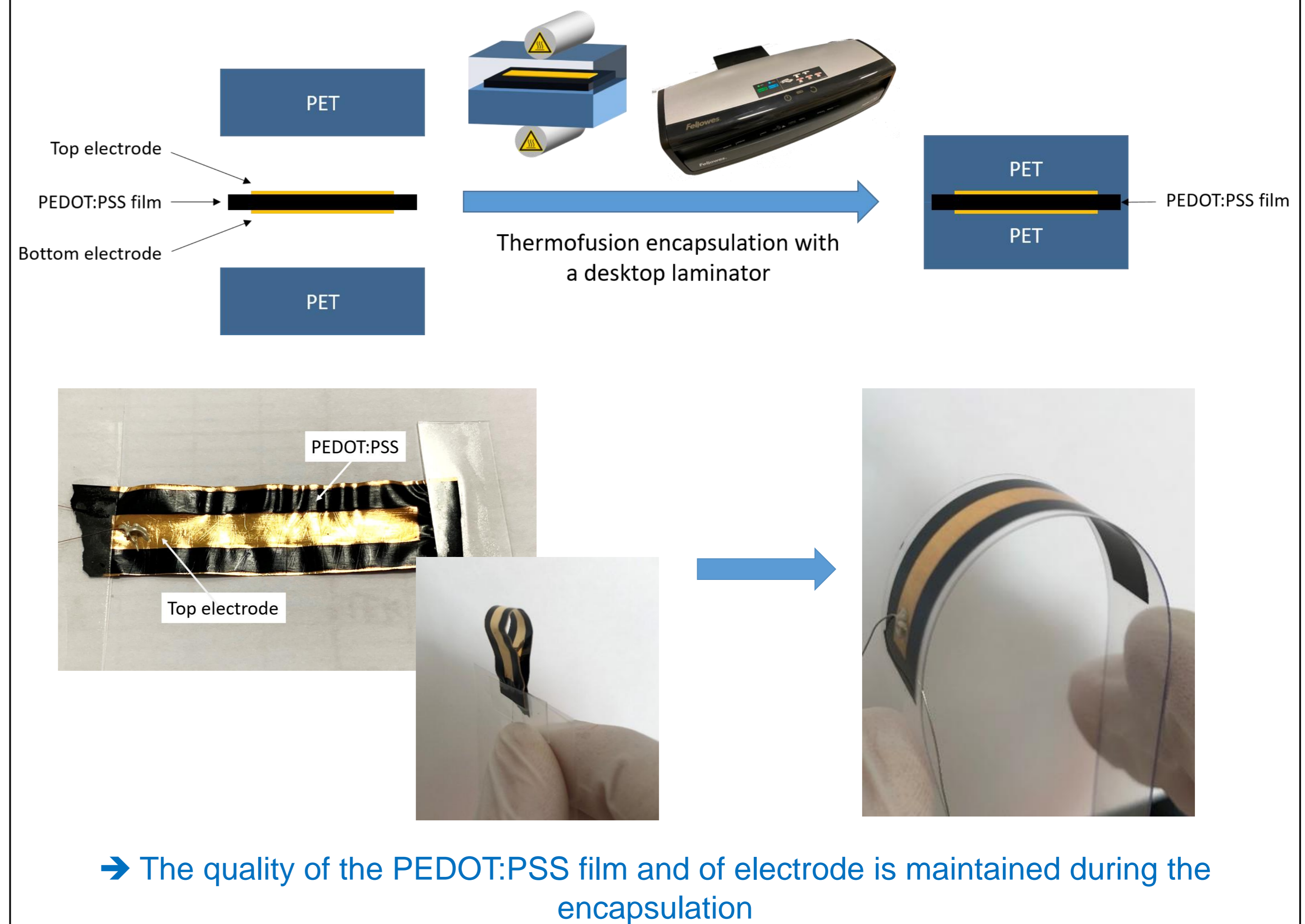
PEDOT:PSS thin film preparation



Research prospects

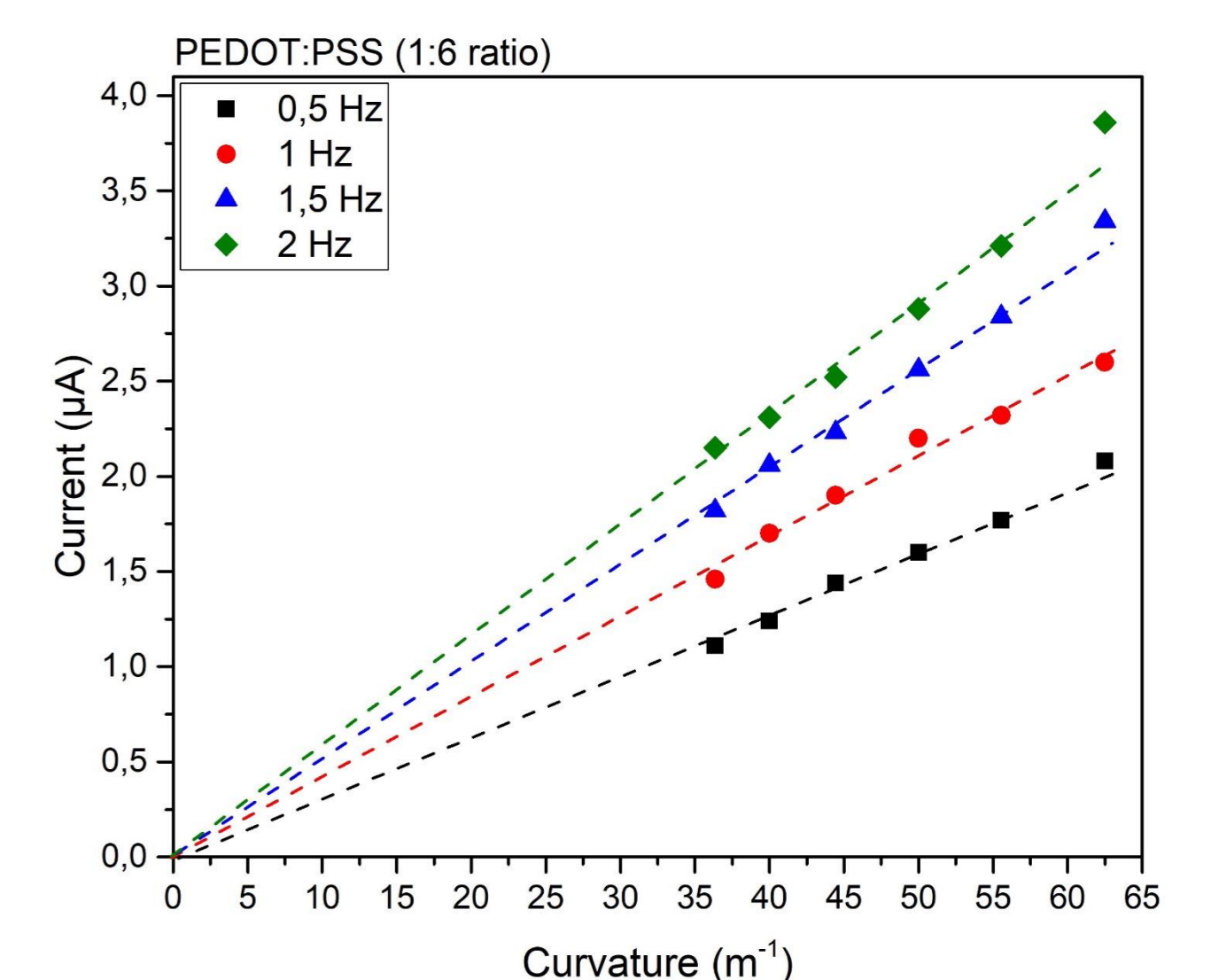
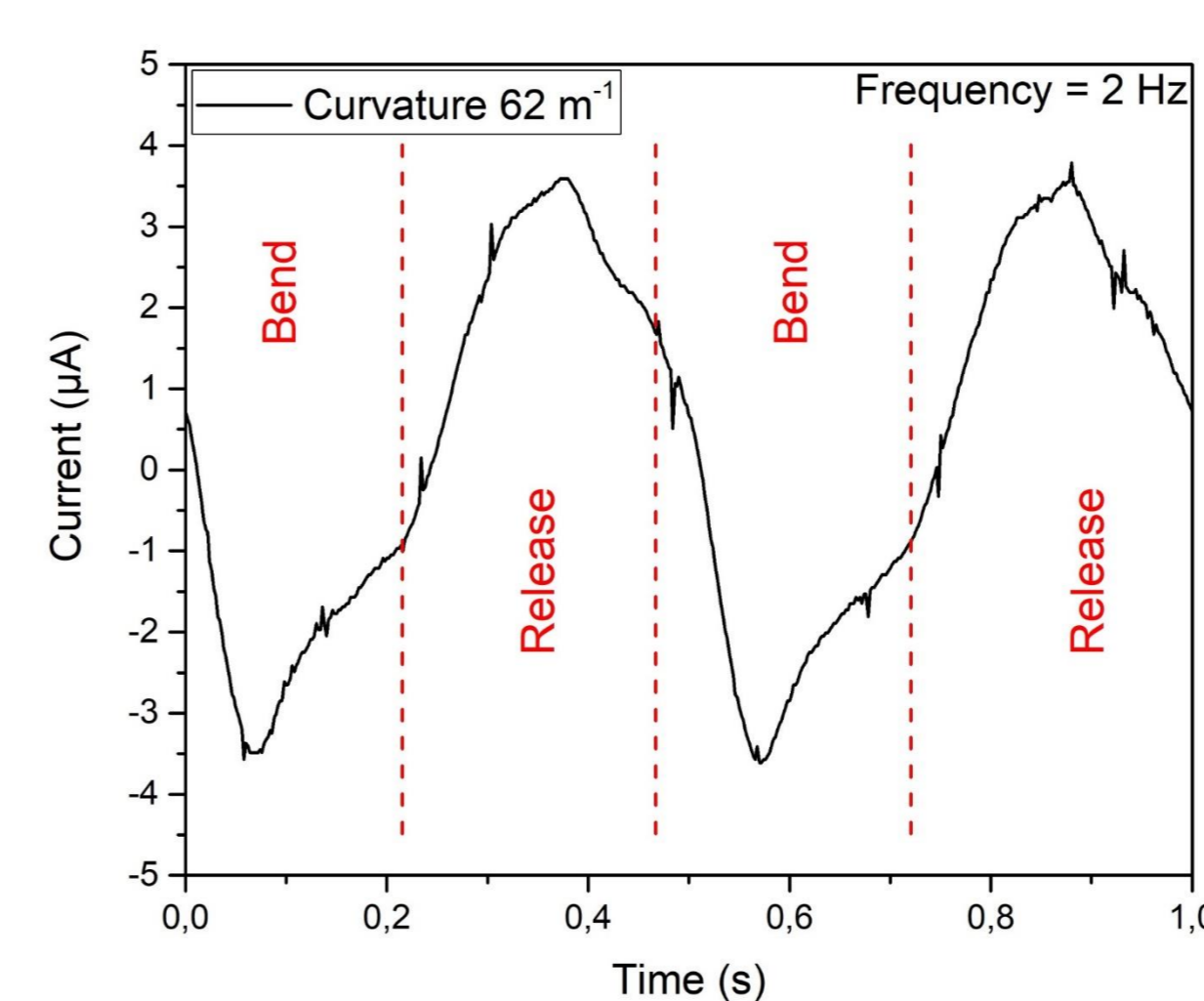
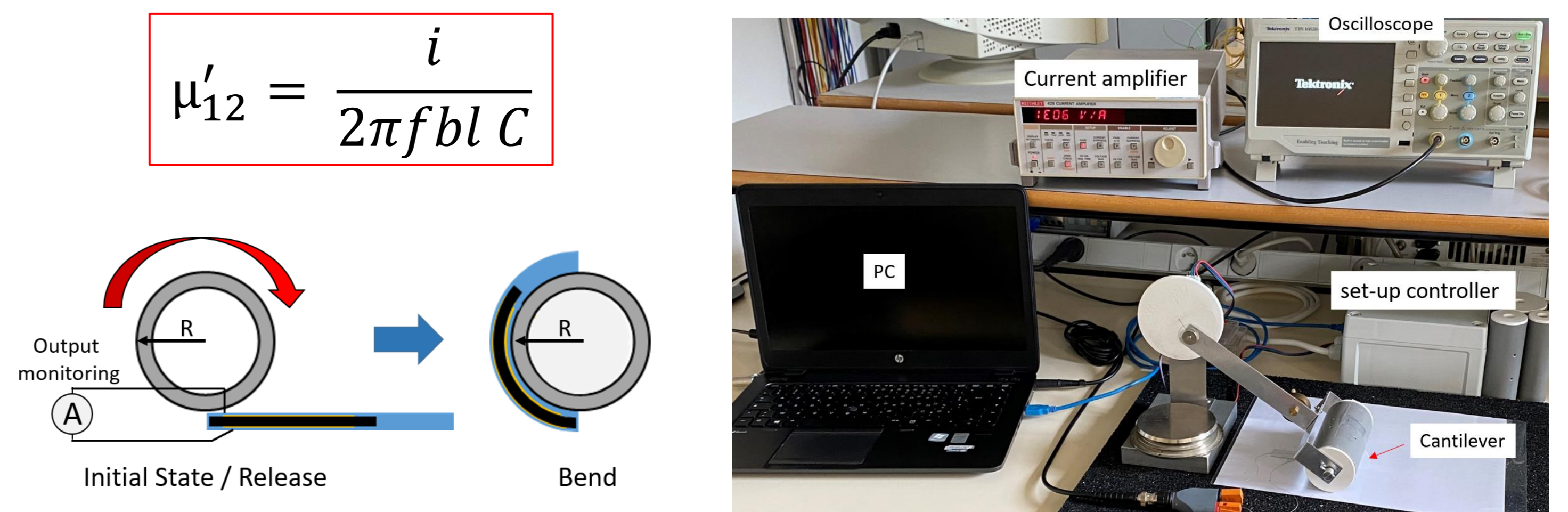
- Optimization of curvature sensor
- Realize a circuit for sensor management
- Making a green curvature sensor
 - biopolymer or biodegradable polymer
 - eco-friendly manufacturing process

Preparation of the flexoelectric sensors

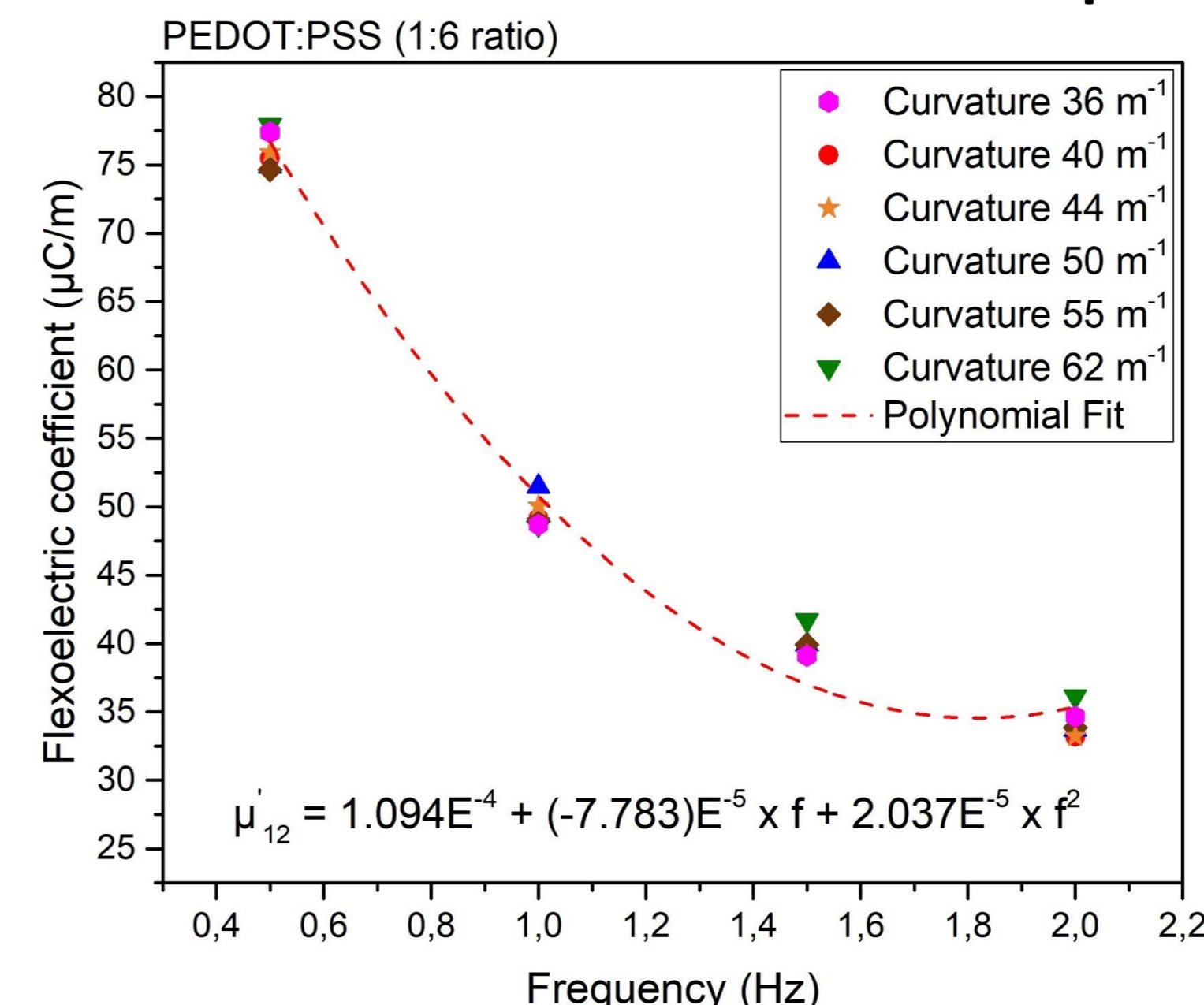


Experiments

Schematic of experimental setup



Schematic of experimental setup



$$C = \frac{i}{2\pi f b l \mu'_{12}(f)}$$

High-curvature sensor based on flexoelectric effect

REFERENCE :

[1] Saadeh, M., Frère, P., and Guiffard, B. (2020). Revealing the flexoelectric-like response of poly(3,4-ethylenedioxythiophene):poly(styrenesulfonate) thin films. *Polymers for Advanced Technologies* 31, 2632–2639. 10.1002/pat.4989.