



HAL
open science

Investigation of the Binary System of Proxiphylline Enantiomers: Phase Diagram Determination

Clément Pinètre, Lina Harfouche, Clément Brandel, Yohann Cartigny, Nicolas Couvrat, Valerie Dupray

► **To cite this version:**

Clément Pinètre, Lina Harfouche, Clément Brandel, Yohann Cartigny, Nicolas Couvrat, et al.. Investigation of the Binary System of Proxiphylline Enantiomers: Phase Diagram Determination. Journées d'Etude des Equilibres entre Phases JEEP2023, Oct 2023, Rouen (FR), France. 2023. hal-04233624

HAL Id: hal-04233624

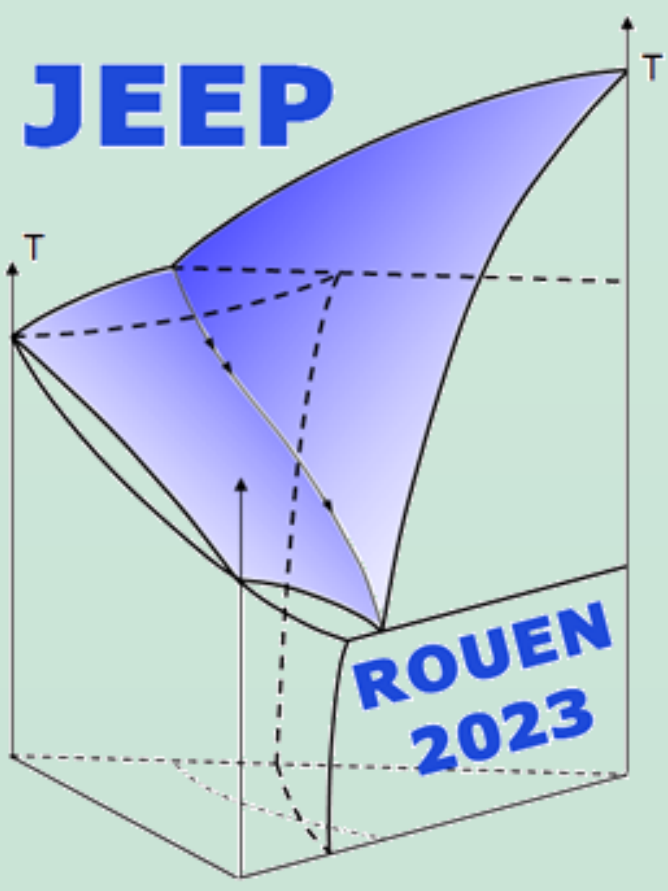
<https://hal.science/hal-04233624>

Submitted on 8 Jan 2024

HAL is a multi-disciplinary open access archive for the deposit and dissemination of scientific research documents, whether they are published or not. The documents may come from teaching and research institutions in France or abroad, or from public or private research centers.

L'archive ouverte pluridisciplinaire **HAL**, est destinée au dépôt et à la diffusion de documents scientifiques de niveau recherche, publiés ou non, émanant des établissements d'enseignement et de recherche français ou étrangers, des laboratoires publics ou privés.

Public Domain



C. Pinère, L. Harfouche, C. Brandel, Y. Cartigny, N. Couvrat, V. Dupray

Univ Rouen Normandie, Normandie Univ, SMS, UR 3233, F-76000 Rouen, France

clement.pinetre1@univ-rouen.fr



Introduction

Proxiphylline :

- Xanthine-based chiral API derived from Theophylline
- Vasodilator, cardiac stimulant and bronchodilator

Three different "modifications" of the racemic composition highlighted by Griesser *et al.*^[1]

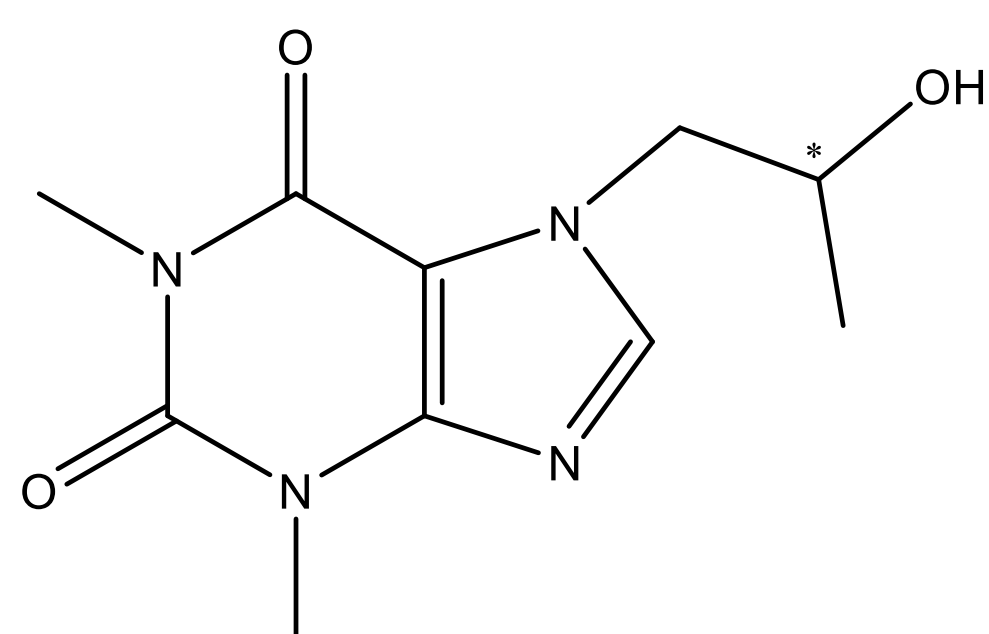
- Mod. I (melting at 133.5°C),
- Mod. II (melting at 113.5°C)
- Mod. III (melting at ca. 82-85°C)

Solid-state classifications?

Crystallization-enhanced chiral resolution by Harfouche *et al.*^[2] :

- Preferential crystallization on a metastable conglomerate of Proxiphylline

Identification and Investigations of the different phases involved in this heterogeneous system



Molecular structure of Proxiphylline

Racemic composition

Stable racemic form :

=> RI [$T_{fus}^{RI} = 134.0^{\circ}C$; $\Delta H_{fus}^{RI} = 22.4 \text{ kJ.mol}^{-1}$]

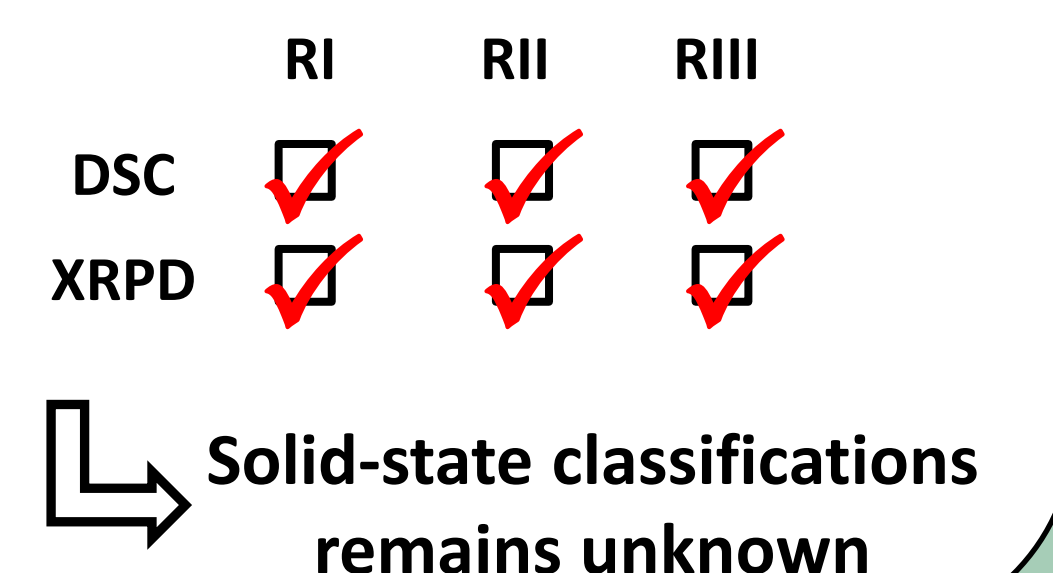
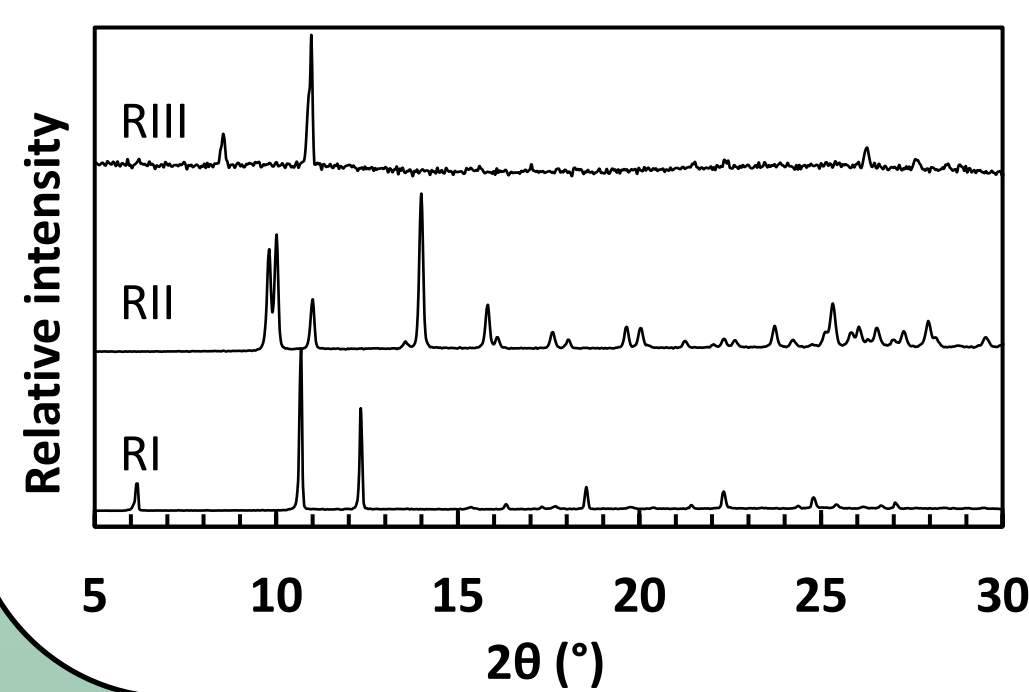
Annealing the SuperCooled Melt (SCM) :

- at 80°C for 30 minutes

=> RII ($T_{fus}^{RII} = 111.5^{\circ}C$; $\Delta H_{fus}^{RII} = 15.2 \text{ kJ.mol}^{-1}$)

- At 80°C for 10 minutes

=> RIII ($T_{fus}^{RIII} = 84.5^{\circ}C$; $\Delta H_{fus}^{RIII} = ?$)

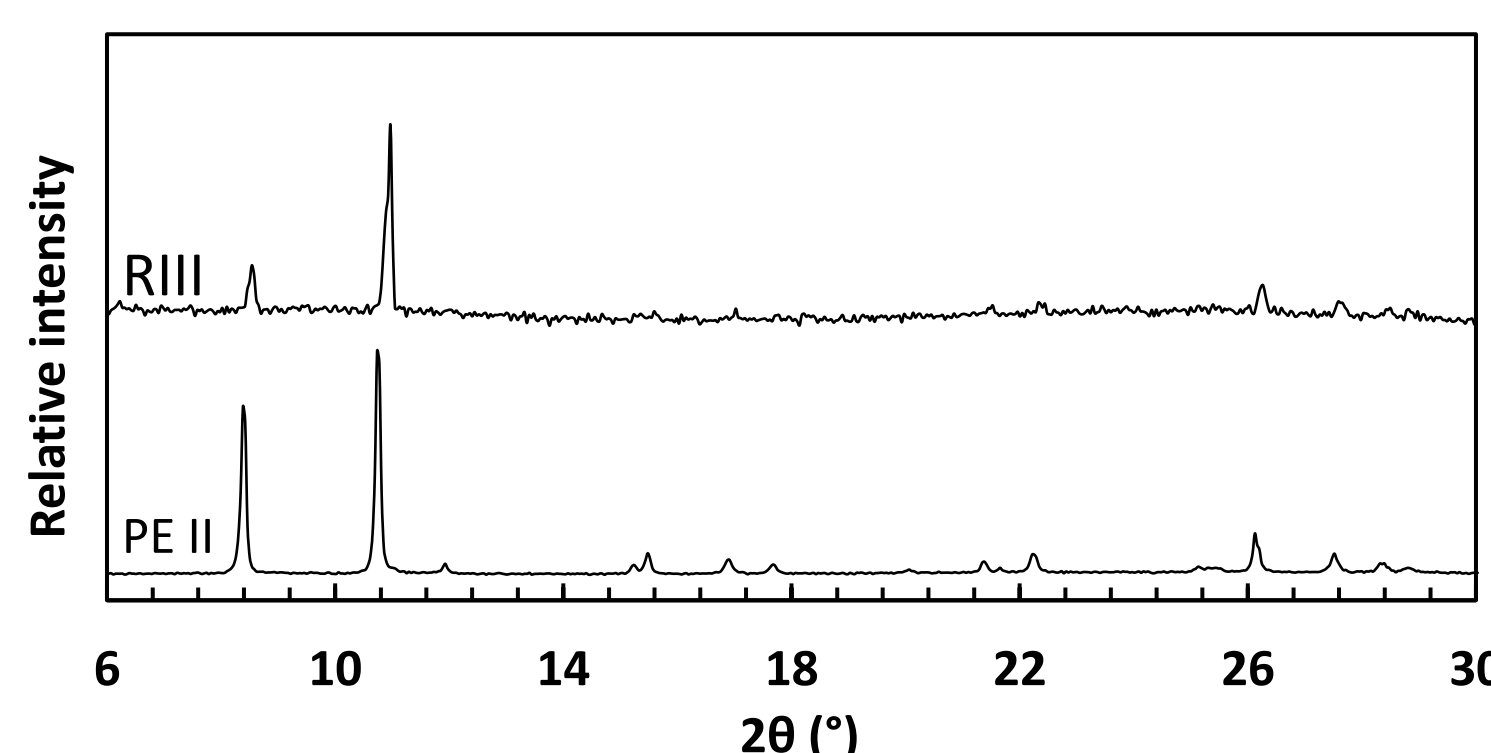


Solid-state classifications remains unknown

RIII

PE II

XRPD comparaison



Superimposable XRPD patterns
Racemic conglomerate **cPE II** [■]

Enantiopure composition

Stable enantiopure form :

=> PEI [$T_{fus}^{PEI} = 148.3^{\circ}C$; $\Delta H_{fus}^{PEI} = 25.6 \text{ kJ.mol}^{-1}$]

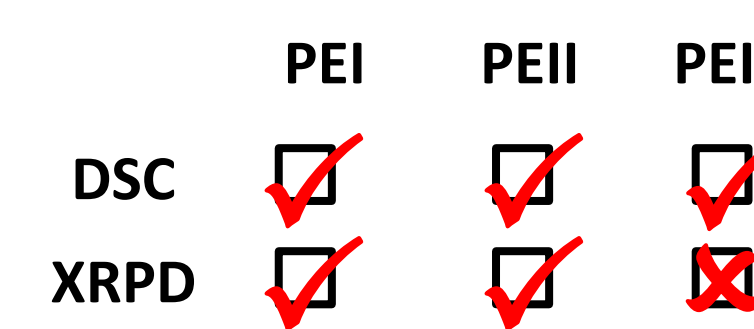
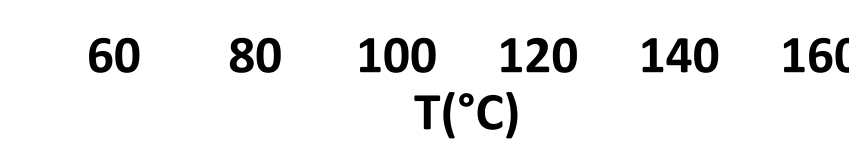
Recrystallization from the SuperCooled Melt :

- Annealing at 80°C for 30min

=> PEII ($T_{fus}^{PEII} = 116.1^{\circ}C$; $\Delta H_{fus}^{PEII} = ?$)

- Heating the SCM from 25 to 160°C at 10K.min⁻¹

=> PEIII ($T_{fus}^{PEIII} = 98.4^{\circ}C$; $\Delta H_{fus}^{PEIII} = ?$)



High metastability of PEIII

Stable equilibria

RI / PEI

DSC measurements of Physical mixtures of RI and PEI at compositions $0.5 < X_{(R)} < 1$

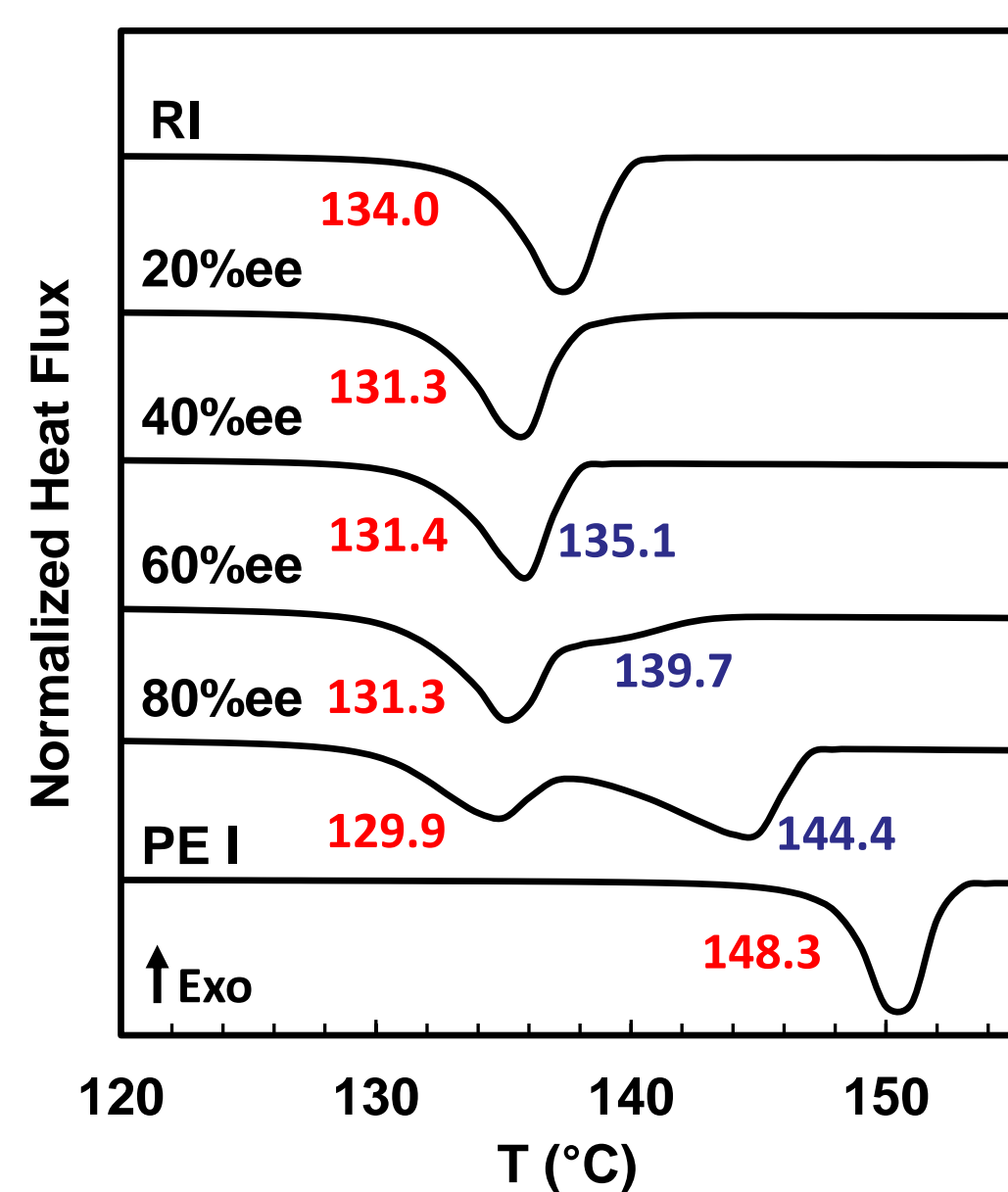
- (i) An endothermic invariant at ca. 131°C

=> Eutectic Invariant

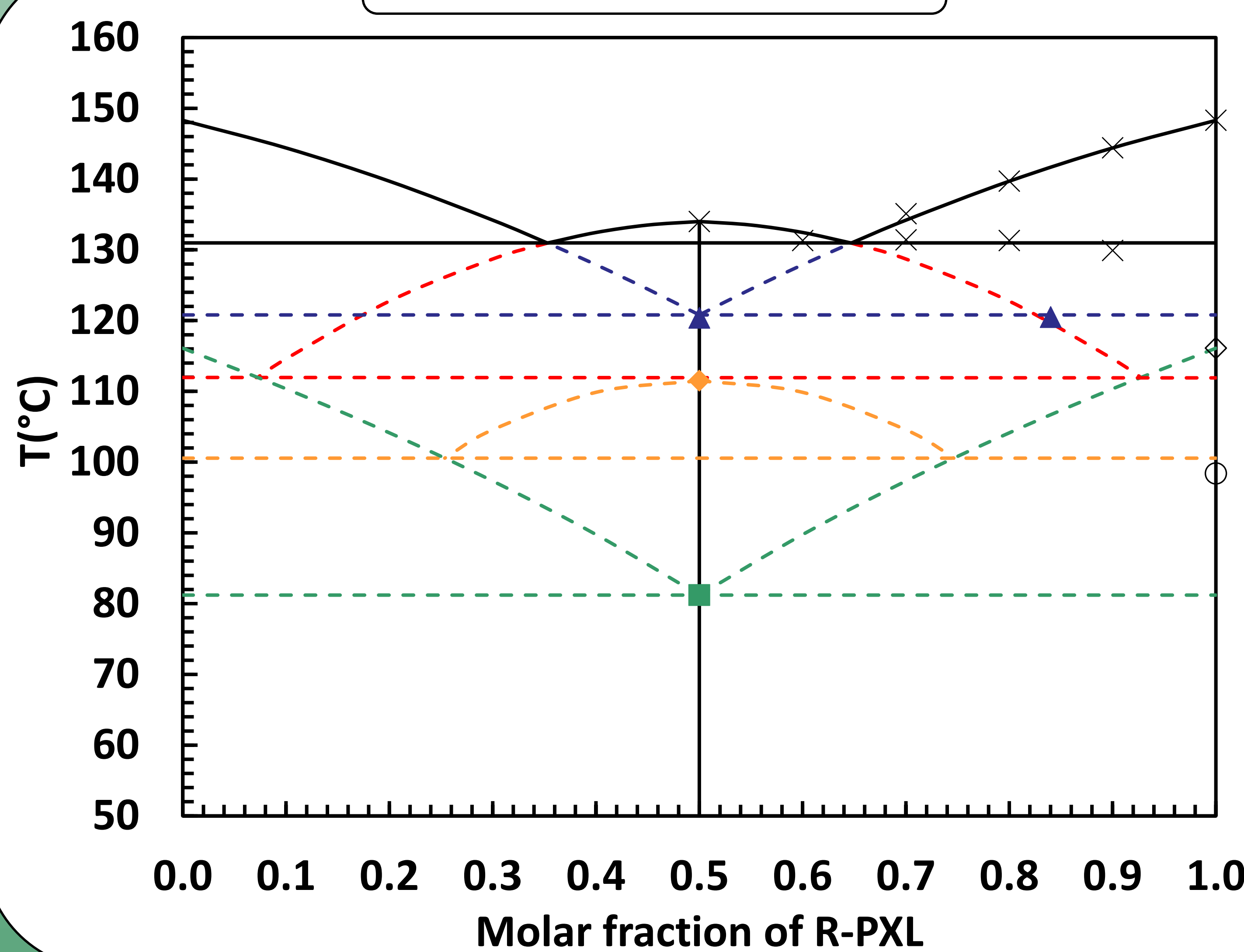
- (ii) An endothermic signal varying between the melting points of pure RI and PEI

=> Liquid

Corresponding experimental points for eutectic invariant and liquidus: (X)



Binary phase diagram



Predicted invariants

Theoretical calculation

Schröder van-Laar and Prigogine-Defay^[3] simplified equation :

$$\ln x = \frac{\Delta H_{fus}}{R} \left(\frac{1}{T_{fus}} - \frac{1}{T_x} \right)$$

$$\ln[4x(1-x)] = \frac{2\Delta H_{fus}}{R} \left(\frac{1}{T_{fus}} - \frac{1}{T_x} \right)$$

- Predict the invariant of **cPE I** & **RI/PE I**

- Estimate the value of $\Delta H_{fus}^{PE II}$ based on experimental determination of $T_{fus}^{cPE II}$

Prediction of two metastable invariants :
RI/PEII and **RII/PEII**

Red and orange dashed lines : Predicted

Equilibrium	Invariant Temperature (°C)		
	Predicted	Measured by DSC	Recalculated
RI / PEI	128.6	131.0	n/a
RI / PEII	n/a	n/a	111.9
RII / PEII	n/a	n/a	100.6
cPEI	111.2	120.4	n/a
(cPEII)	n/a	81.2	n/a

Conclusion

The binary phase diagram between PXL enantiomers presents :

- Three polymorphs of the pure enantiomer (i.e., PE I, PE II, PE III)
- Two polymorphs of the racemic compound (i.e., RI and RII)

Monotropic relationship

Predicted and recalculated invariants via SVL & PD simplified equations

Metastable conglomerates **cPEI** & **cPEII** experimentally characterized

Poor agreement between predicted ($T=111.2^{\circ}C$) and measured ($T=120.4^{\circ}C$) invariant temperatures of **cPEI**

Non-ideal thermodynamic behavior

Hot Stage Microscopy video of SCM experiment on PEII available here !



Enjoy !