



HAL
open science

FANCM missense variants and breast cancer risk: a case-control association study of 75,156 European women

Gisella Figlioli, Amandine Billaud, Thomas U. Ahearn, Natalia Nikolaevna Antonenkova, Heiko Becher, Matthias Wilhelm Beckmann, Sabine Behrens, Javier J. Benitez, Marina A. Bermisheva, Marinus J. Blok, et al.

► To cite this version:

Gisella Figlioli, Amandine Billaud, Thomas U. Ahearn, Natalia Nikolaevna Antonenkova, Heiko Becher, et al.. FANCM missense variants and breast cancer risk: a case-control association study of 75,156 European women. *Eur J Hum Genet*, 2023, 31 (5), pp.578-587. 10.1038/s41431-022-01257-w. hal-04233282

HAL Id: hal-04233282

<https://hal.science/hal-04233282>

Submitted on 27 Oct 2023

HAL is a multi-disciplinary open access archive for the deposit and dissemination of scientific research documents, whether they are published or not. The documents may come from teaching and research institutions in France or abroad, or from public or private research centers.

L'archive ouverte pluridisciplinaire **HAL**, est destinée au dépôt et à la diffusion de documents scientifiques de niveau recherche, publiés ou non, émanant des établissements d'enseignement et de recherche français ou étrangers, des laboratoires publics ou privés.



Distributed under a Creative Commons Attribution 4.0 International License

ARTICLE OPEN



FANCM missense variants and breast cancer risk: a case-control association study of 75,156 European women

Gisella Figlioli¹, Amandine Billaud¹, Thomas U. Ahearn², Natalia N. Antonenkova³, Heiko Becher⁴, Matthias W. Beckmann⁵, Sabine Behrens⁶, Javier Benitez^{7,8}, Marina Bermisheva⁹, Marinus J. Blok¹⁰, Natalia V. Bogdanova^{3,11,12}, Bernardo Bonanni¹³, Barbara Burwinkel^{14,15}, Nicola J. Camp¹⁶, Archie Campbell^{17,18}, Jose E. Castelao¹⁹, Melissa H. Cessna²⁰, Stephen J. Chanock², NBCS Collaborators*, Kamila Czene²¹, Peter Devilee^{22,23}, Thilo Dörk¹², Christoph Engel^{24,25}, Mikael Eriksson²¹, Peter A. Fasching⁵, Jonine D. Figueroa^{2,18,26}, Marika Gabrielson²¹, Manuela Gago-Dominguez^{27,28}, Montserrat Garcia-Closas², Anna González-Neira²⁹, Felix Grassmann^{21,30}, Pascal Guénel³¹, Melanie Gündert^{14,15,32}, Andreas Hadjisavvas³³, Eric Hahnen^{34,35}, Per Hall^{21,36}, Ute Hamann³⁷, Patricia A. Harrington³⁸, Wei He²¹, Peter Hillemanns¹², Antoinette Hollestelle³⁹, Maartje J. Hooning³⁹, Reiner Hoppe^{40,41}, Anthony Howell⁴², Keith Humphreys²¹, KConFab Investigators*, Agnes Jager³⁹, Anna Jakubowska^{43,44}, Elza K. Khusnutdinova^{9,45}, Yon-Dschun Ko⁴⁶, Vessela N. Kristensen⁴⁷, Annika Lindblom^{48,49}, Jolanta Lissowska⁵⁰, Jan Lubiński⁴³, Arto Mannermaa^{51,52,53}, Siranoush Manoukian⁵⁴, Sara Margolin^{36,55}, Dimitrios Mavroudis⁵⁶, William G. Newman^{57,58}, Nadia Obi⁴, Mihalis I. Panayiotidis³³, Muhammad U. Rashid^{37,59}, Valerie Rhenius³⁸, Matti A. Rookus⁶⁰, Emmanouil Saloustros⁶¹, Elinor J. Sawyer⁶², Rita K. Schmutzler^{34,35,63}, Mitul Shah³⁸, Reijo Sironen^{51,52,64}, Melissa C. Southey^{65,66,67}, Maija Suvanto⁶⁸, Rob A. E. M. Tollenaar⁶⁹, Ian Tomlinson⁷⁰, Thérèse Truong³¹, Lizet E. van der Kolk⁷¹, Elke M. van Veen^{57,58}, Barbara Wappenschmidt^{34,35}, Xiaohong R. Yang⁷², Manjeet K. Bolla⁷², Joe Dennis⁷², Alison M. Dunning³⁸, Douglas F. Easton^{38,72}, Michael Lush⁷², Kyriaki Michailidou^{72,73}, Paul D. P. Pharoah^{38,72}, Qin Wang⁷², Muriel A. Adank⁷¹, Marjanka K. Schmidt^{60,74}, Irene L. Andrulis^{75,76}, Jenny Chang-Claude^{6,77}, Heli Nevanlinna⁶⁸, Georgia Chenevix-Trench⁷⁸, D. Gareth Evans^{57,58}, Roger L. Milne^{65,67,79}, Paolo Radice⁸⁰ and Paolo Peterlongo¹

© The Author(s) 2023

Evidence from literature, including the BRIDGES study, indicates that germline protein truncating variants (PTVs) in *FANCM* confer moderately increased risk of ER-negative and triple-negative breast cancer (TNBC), especially for women with a family history of the disease. Association between *FANCM* missense variants (MVs) and breast cancer risk has been postulated. In this study, we further used the BRIDGES study to test 689 *FANCM* MVs for association with breast cancer risk, overall and in ER-negative and TNBC subtypes, in 39,885 cases (7566 selected for family history) and 35,271 controls of European ancestry. Sixteen common MVs were tested individually; the remaining rare 673 MVs were tested by burden analyses considering their position and pathogenicity score. We also conducted a meta-analysis of our results and those from published studies. We did not find evidence for association for any of the 16 variants individually tested. The rare MVs were significantly associated with increased risk of ER-negative breast cancer by burden analysis comparing familial cases to controls (OR = 1.48; 95% CI 1.07–2.04; $P = 0.017$). Higher ORs were found for the subgroup of MVs located in functional domains or predicted to be pathogenic. The meta-analysis indicated that *FANCM* MVs overall are associated with breast cancer risk (OR = 1.22; 95% CI 1.08–1.38; $P = 0.002$). Our results support the definition from previous analyses of *FANCM* as a moderate-risk breast cancer gene and provide evidence that *FANCM* MVs could be low/moderate risk factors for ER-negative and TNBC subtypes. Further genetic and functional analyses are necessary to clarify better the increased risks due to *FANCM* MVs.

European Journal of Human Genetics (2023) 31:578–587; <https://doi.org/10.1038/s41431-022-01257-w>

INTRODUCTION

Since the discovery of the high-risk breast cancer predisposition genes *BRCA1* and *BRCA2*, extensive efforts have tried to identify additional breast cancer predisposition genes. Many candidate genes have been proposed but replication studies have been confirmatory for only few of them [1]. Recently, two large case-control studies were conducted in which several established and candidate breast cancer predisposition genes were tested. The

BRIDGES study from the Breast Cancer Association Consortium (BCAC) tested 34 genes in 60,466 women with breast cancer and 53,461 controls [2]. In the second study, 28 genes were tested among 32,247 women with breast cancer and 32,544 unaffected women from US population-based studies in the CARRIERS consortium [3]. Results from both studies were concordant in confirming that germline protein truncating variants (PTVs) in *BRCA1*, *BRCA2* and *PALB2* are associated with high-risk of breast

A full list of author affiliations appears at the end of the paper.

Received: 15 July 2022 Revised: 11 November 2022 Accepted: 24 November 2022

Published online: 27 January 2023

cancer, that PTVs in *CHEK2* and *ATM* confer moderate risk especially for the ER-positive disease subtype, and that PTVs in *RAD51C*, *RAD51D* and *BARD1* are moderate risk variants for ER-negative breast cancer. Lack of evidence of association was detected for PTVs in the great majority of the other tested candidate genes, but for one—namely *FANCM*—some evidence for association with ER-negative breast cancer was observed [2].

The association between a *FANCM* PTV and breast cancer risk was initially investigated in 2013 [4]. Since then, many case-control studies have been conducted, most based on the testing the three most common PTVs. Specifically, p.Gln1701* (c.5101 C > T) and p.Gly1906Alafs*12 (c.5791 C > T), which are expected to cause the loss of the FAAP24 binding domain in the *FANCM* protein C-terminus, were reported by a study of Finnish women as moderate risk variants for ER-negative and triple-negative breast cancer (TNBC) [5, 6]. In a large study of Caucasian women, we observed that the p.Arg658* (c.1972C > T), the third most common PTV, located in the protein N-terminus, was associated with moderate risk for ER-negative and TNBC subtypes, but the evidence of association for p.Gly1906Alafs*12 was inconclusive, and no evidence was observed for p.Gln1701* [7]. Overall, these and other studies [8, 9]—reviewed in Peterlongo et al. (2021)—indicate that *FANCM* PTVs are potential risk variants for ER-negative and TNBC subtypes; more precisely, they suggest that each PTV confers an increase risk with magnitude that may vary depending on its position in the gene or on the population genetic background [10].

While PTVs in breast cancer predisposition genes are usually considered bona fide pathogenic, missense variants (MVs) are often referred to as “variants of uncertain significance”. Their effect on protein function and cancer risk is generally unknown and difficult to estimate. Several in silico tools that predict pathogenicity of MVs have been developed that, together with additional evidence, such as frequency data, segregation analyses and functional assays, allow some MVs to be classified. However, MVs are often so infrequent that they have to be combined overall, or in subgroups based on their location in the gene domains or pathogenicity prediction score, in order to generate evidence of pathogenicity. MVs in several established and candidate breast cancer predisposition genes have been tested for association with breast cancer risk in many studies. To date, the potential association between *FANCM* MVs and breast cancer risk has been investigated by three studies in which all the rare variants were combined in burden analyses. Two studies were conducted using familial breast cancer cases with no *BRCA1* or *BRCA2* pathogenic variants and controls from the general population. The first, based on the analysis of 1207 cases and 1199 controls from France, did not find clear evidence of association with *FANCM* MVs (OR = 1.6; 95% CI 0.9–2.8) [11]. The second study, including 5770 cases and 5741 population-matched controls predominantly of European ancestry reported a statistically significant association with an OR of 1.50 (95% CI 1.16–1.93) [12]. In the third analysis, which was part of the BRIDGES study, rare *FANCM* MVs (allele frequency <0.1%) were tested in population- and family-based studies combined and separately. An association with breast cancer risk was found when comparing cases selected for family history of breast cancer and controls, with an OR estimate of 1.22 (95% CI 1.05–1.42) [2]. In the present study, we analysed further the BRIDGES data derived from the *FANCM* sequencing in women of European ancestry from population- and family-based studies. Specifically, we assessed 673 rare MVs with allele frequency <0.1% that were combined in burden analyses, but we also assessed individually 16 common MVs with allele frequency ≥0.1%. The burden analyses were based on the MVs’ gene domain location, and their pathogenicity prediction score. Analyses were conducted to assess associations with overall breast cancer but also the ER-negative and TNBC disease subtypes.

MATERIALS AND METHODS

Study sample

In this work we included women affected with breast cancer (cases) and unaffected women (controls) from 40 studies participating in the BRIDGES project (Supplementary Table S1), as previously described [2]. All 40 studies were approved by the relevant ethical review board and used appropriate consent procedures. Twenty-eight studies included cases unselected for breast cancer family history and are defined as “population-based studies”. The remaining 12 studies included cases selected because they had a family history of breast cancer, and are defined as “family-based studies”. All women included in this study were of European ancestry and older than 18 years at breast cancer diagnosis (cases) or interview (controls). We excluded women who, having a family history for breast cancer, were eligible for the *BRCA1* and *BRCA2* test and at the moment of the study enrollment were known to carry a pathogenic variant in these genes. We also excluded all carriers of *FANCM* PTVs and all women with one or more unknown *FANCM* MV genotypes. Thus, a total of 39,885 breast cancer cases (of which 91.6% were invasive cases, 6.2% in situ cases, and 2.2% cases of unknown invasiveness) and 35,271 controls were included in this study. Of the cases, 32,083 (80.4%) were from population-based studies and 7566 (19.0%) were from family-based studies; for the remaining 236 cases (0.6%) this information was not available. Of all cases, 5880 had ER-negative breast cancer and 2176 had TNBC.

Sequencing, variant calling and classification

The *FANCM* gene was included in a panel of 34 established and putative breast cancer predisposition genes that were sequenced in the context of the BRIDGES project [2]. Details of library preparation, next generation sequencing, variant calling, quality control procedures, and variant classification were described previously [2]. The *FANCM* MVs included in the present analyses were defined as common if their allelic frequency in controls was ≥0.1% and defined as rare if their allelic frequency in controls was <0.1%. The exact positions of *FANCM* functional and binding domains were derived from UniProt database and published literature [13–15] (Fig. 1). Pathogenicity scores were assigned to each MV using the in silico prediction tools BayesDel [16], Combined Annotation Dependent Depletion (CADD) [17], Helix [18] and Rare Exome Variant Ensemble Learner (REVEL) [19]. The following cut-off were used to classify MVs as pathogenic: BayesDel score with MaxAF >0.069, CADD phred-scaled score ≥30, Helix score >0.50 and REVEL score >0.50.

Statistical analyses

To test the association between *FANCM* MVs and breast cancer risk, we performed logistic regression analyses adjusting for country. Common MVs were tested individually by deriving allelic odds ratios (ORs) with their corresponding 95% confidence intervals (CIs) and *P* values (*P*). Multiple testing correction was applied using Benjamini and Hochberg procedure [20]. Rare MVs were tested by burden analyses deriving ORs (with 95% CIs) comparing variant carriers with non-carriers. In this case, heterozygous and homozygous carriers were not distinguished as the number of homozygous carriers was too small to be analysed separately. We first combined all rare variants together then grouped them based on their location within functional or binding domains and by pathogenicity score. Statistical analyses for both common and rare MVs were conducted using the full sample, and separately for population- or family-based studies, and for ER-negative and TNBC case subgroups (each compared to controls) separately. Finally, we performed a fixed-effect meta-analysis combining the OR that we derived in the analysis of family-based studies with the ORs derived by the two previously published studies conducted using familial cases [11, 12]. All statistical analyses were performed using STATA version 15.1 (StataCorp LLC, College Station, Texas, USA). All tests were two-sided and *P* < 0.05 were considered statistically significant.

RESULTS

A total of 689 unique *FANCM* MVs, of which 16 were common and 673 were rare, were detected in at least one woman from our study sample (Supplementary Table S2). All 16 common MVs were tested individually for association with breast cancer risk (Supplementary Table S3). Of these 16 MVs, seven showed a possible association (*P* < 0.05) with breast cancer risk or a protective effect in some of the case groups tested. But none

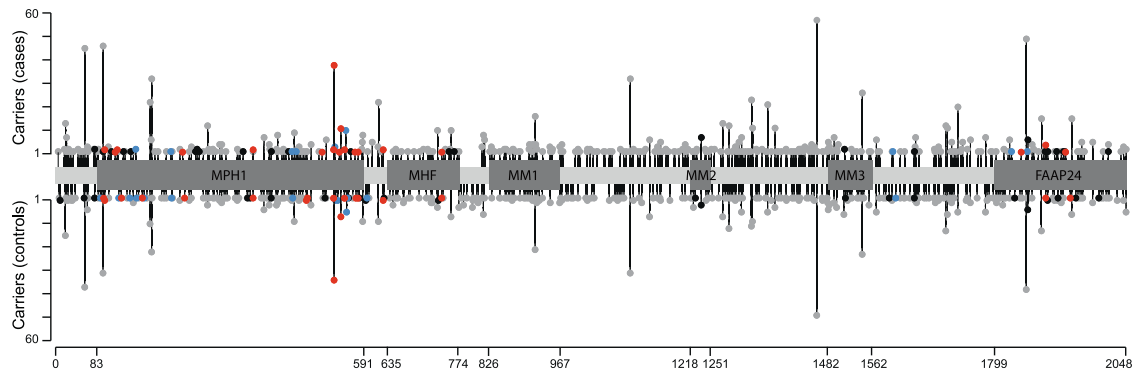


Fig. 1 Representation of the 673 *FANCM* rare missense variants (MVs) with respect to the 2048 amino acid long *FANCM* protein. Functional and binding domains (MPH1, ATP-dependent DNA helicase; MHF, domain of interaction with the Histone Fold 1 and 2 (MHF1/2); MM1, motif of interaction with FANCF within the Fanconi Anemia core complex; MM2, motif of interaction with RecQ-Mediated genome Instability protein 1 (RMI1); MM3, highly conserved motif of still unknown function; FAAP24, domain of interaction with the Fanconi Anemia core complex-Associated Protein 24) are shown in dark grey and their boundaries indicated. The MVs are shown according to their position, the number of carriers in cases and controls, and by their in silico scores of pathogenicity according to BayesDel, CADD, Helix and REVEL tools; in grey are MVs predicted benign by all the tools; in black, MVs predicted pathogenic by one tool; in blue, MVs predicted pathogenic by two tools; in red, MVs predicted pathogenic by three or four tools.

were statistically significant after correction for multiple testing (Supplementary Table S3).

The 673 rare MVs are described and represented, based on their gene location, pathogenicity score according to four in silico tools, and the numbers of variant carriers in cases and controls, in Fig. 1. The burden analyses including all the rare 673 *FANCM* MVs did not indicate any statistically significant association with breast cancer risk either in the analysis of combined population- and family-based studies or when these groups were analysed separately (Table 1). The only significant association, with OR = 1.48 (95% CI 1.07–2.04; $P = 0.017$), was found with ER-negative breast cancer in the analysis of family-based studies. These analyses were repeated with subgroups of the variants. We firstly considered the subgroup of the 372 MVs located within the *FANCM* functional or binding domains but found no evidence of association. We then excluded the 76 MVs located in the FAAP24 domain and found that the 296 remaining MVs were associated with TNBC in familial studies with an OR = 2.27 (95% CI 1.15–4.47; $P = 0.017$). We further selected among the 296 MVs the 61 MVs predicted to be pathogenic by at least one of the four in silico tools used and found an association with TNBC with an OR = 3.51 (95% CI 1.07–11.44; $P = 0.038$) in the familial studies (Table 1).

Finally, we considered the two studies published so far testing the association between *FANCM* MVs and breast cancer risk conducted using familial designs and excluding carriers of *BRCA1* or *BRCA2* pathogenic variants [11, 12]. Thus, we performed a meta-analysis combining results from these studies with those from our analysis and found that all *FANCM* MVs combined were associated with familial breast cancer risk with OR = 1.22 (95% CI 1.08–1.38; $P = 0.002$, Fig. 2).

DISCUSSION

In this study, we re-analysed the BRIDGES *FANCM* sequencing data assessing the breast cancer risk effects of 689 unique MVs in 39,885 European breast cancer cases and 35,271 controls from population- and family-based studies. According to their allele frequencies, these MVs were analysed either individually or by burden analyses, in the latter case combined in groups considering their gene domain location or their pathogenicity score. Also, the cases were analysed in different combinations, by study-design, and overall and for ER-negative or TNBC clinical subtypes.

Sixteen common MVs with an allele frequency $\geq 0.1\%$ were analysed individually but we did not find evidence for association for any of these variants. The remaining 673 MVs were rare, with an allele frequency $< 0.1\%$. The best approach to study the risks conferred by these variants is that of combining single variant data in burden analysis and of conducting meta-analyses of different studies. Overall, our results and those from the previously conducted studies [2, 11, 12], indicate that *FANCM* MVs are associated with familial breast cancer risk, suggesting that these variants are low-risk susceptibility variants for breast cancer. This observation was confirmed by the meta-analysis of our and the published results [11, 12] showing that these variants were associated with familial breast cancer risk (OR = 1.22, Fig. 2). However, as studies with statistically significant results have increased likelihood of being published, we cannot exclude that this result is affected by the presence of publication bias. It is also interesting to note that a higher OR estimate, indicating moderately increased risk, was derived for the 296 MVs located within functional or binding domains excluding those in the FAAP24 (OR = 2.27, Table 1), and for the subgroup of 61 variants that among the 296 were predicted to be pathogenic by at least one of the in silico tools we used (OR = 3.51, Table 1). Further studies based on in vitro assays should be conducted to test if any of these MVs is functionally deleterious allowing to better clarify their risk effect on breast cancer. It should be noted that in the present study, as well as in the previously published ones, the association of *FANCM* MVs was only found in family-based studies. While this supports the hypothesis that *FANCM* MVs are breast cancer risk factors, the ORs we found in this study are an overestimate of the risks these variants confer. The lack of associations of *FANCM* MVs with breast cancer risk in the analyses of only population-based studies could be explained by the presence of other unmeasured risk variants aggregating in families that may interact with *FANCM* MVs. Results from the analysis of family- and population-based studies combined are similar to those of the analysis of only population-based studies as familial cases represent only the 19% of all the cases included.

In conclusion, our data suggest that at least some of the *FANCM* MVs—in particular those located in some gene domains and classified as pathogenic in silico—could be risk variants for ER-negative breast cancer in familial settings. Larger association studies and, functional assays may be helpful to better clarify these MVs effects on breast cancer risk. Overall, our results showed that perturbation of the *FANCM* gene has an impact on breast

Table 1. Association analyses of the 673 FANCM rare MVs with breast cancer risk overall and in ER-negative and TNBC subtypes tested in population- and family-based studies combined and separately.

	All studies			Population-based studies			Family-based studies		
	Carriers/Non-carriers (Freq %)	OR (95% CI); P	Carriers/Non-carriers (Freq %)	OR (95% CI); P	Carriers/Non-carriers (Freq %)	OR (95% CI); P	Carriers/Non-carriers (Freq %)	OR (95% CI); P	
All MVs [673]									
Controls	1006/34,265 (2.85)	–	1006/34,265 (2.85)	–	1006/34,265 (2.85)	–	1006/34,265 (2.85)	–	
All cases	1193/38,692 (2.99)	1.04 (0.95–1.13); 0.396	932/31,151 (2.90)	1.02 (0.93–1.12); 0.637	254/7312 (3.36)	1.12 (0.97–1.30); 0.135	254/7312 (3.36)	1.12 (0.97–1.30); 0.135	
ER-negative	176/5704 (2.99)	1.02 (0.87–1.21); 0.784	133/4763 (2.72)	0.94 (0.78–1.13); 0.491	42/906 (4.43)	1.48 (1.07–2.04); 0.017	42/906 (4.43)	1.48 (1.07–2.04); 0.017	
TNBC	57/2119 (2.62)	0.89 (0.68–1.17); 0.417	42/1813 (2.26)	0.78 (0.57–1.06); 0.112	15/302 (4.73)	1.58 (0.93–2.68); 0.088	15/302 (4.73)	1.58 (0.93–2.68); 0.088	
MVs within functional or binding domains [372]									
Controls	572/34,699 (1.62)	–	572/34,699 (1.62)	–	572/34,699 (1.62)	–	572/34,699 (1.62)	–	
All cases	654/39,231 (1.64)	1.00 (0.90–1.13); 0.921	515/31,568 (1.60)	0.99 (0.88–1.12); 0.877	134/7432 (1.77)	1.06 (0.87–1.30); 0.561	134/7432 (1.77)	1.06 (0.87–1.30); 0.561	
ER-negative	100/5780 (1.70)	1.04 (0.84–1.29); 0.724	77/4819 (1.57)	0.97 (0.76–1.23); 0.780	22/926 (2.32)	1.39 (0.90–2.16); 0.138	22/926 (2.32)	1.39 (0.90–2.16); 0.138	
TNBC	29/2147 (1.33)	0.81 (0.56–1.19); 0.286	20/1835 (1.08)	0.66 (0.42–1.03); 0.070	9/308 (2.84)	1.72 (0.88–3.37); 0.115	9/308 (2.84)	1.72 (0.88–3.37); 0.115	
MVs within functional or binding domains excluding those in the FAAP24 BD [296]									
Controls	440/34,831 (1.25)	–	440/34,831 (1.25)	–	440/34,831 (1.25)	–	440/34,831 (1.25)	–	
All cases	509/39,376 (1.28)	1.01 (0.89–1.15); 0.815	398/31,685 (1.24)	0.99 (0.87–1.14); 0.952	107/7459 (1.41)	1.12 (0.89–1.40); 0.338	107/7459 (1.41)	1.12 (0.89–1.40); 0.338	
ER-negative	80/5800 (1.36)	1.08 (0.85–1.38); 0.528	63/4833 (1.29)	1.03 (0.79–1.34); 0.839	17/931 (1.79)	1.41 (0.86–2.31); 0.177	17/931 (1.79)	1.41 (0.86–2.31); 0.177	
TNBC	26/2150 (1.19)	0.95 (0.64–1.42); 0.812	17/1838 (0.92)	0.73 (0.45–1.19); 0.209	9/308 (2.84)	2.27 (1.15–4.47); 0.017	9/308 (2.84)	2.27 (1.15–4.47); 0.017	
MVs within functional or binding domains excluding those in the FAAP24 BD and predicted pathogenic by at least one in silico tool [61]									
Controls	92/35,179 (0.26)	–	92/35,179 (0.26)	–	92/35,179 (0.26)	–	92/35,179 (0.26)	–	
All cases	107/39,778 (0.27)	1.04 (0.78–1.37); 0.803	81/32,002 (0.25)	0.96 (0.71–1.30); 0.809	25/7541 (0.33)	1.23 (0.76–1.99); 0.394	25/7541 (0.33)	1.23 (0.76–1.99); 0.394	
ER-negative	15/5865 (0.25)	0.98 (0.57–1.70); 0.950	10/4886 (0.20)	0.79 (0.41–1.52); 0.486	5/943 (0.53)	1.93 (0.76–4.89); 0.167	5/943 (0.53)	1.93 (0.76–4.89); 0.167	
TNBC	4/2172 (0.18)	0.71 (0.26–1.94); 0.505	1/1854 (0.05)	0.21 (0.03–1.50); 0.120	3/314 (0.95)	3.51 (1.07–11.44); 0.038	3/314 (0.95)	3.51 (1.07–11.44); 0.038	

The statistically significant results are indicated in bold. In square brackets is indicated the number of the MVs in each tested group.

Freq carrier frequency, OR odds ratio, CI confidence interval, P p value of association from Z-test, TNBC triple-negative breast cancer, BD binding domain.

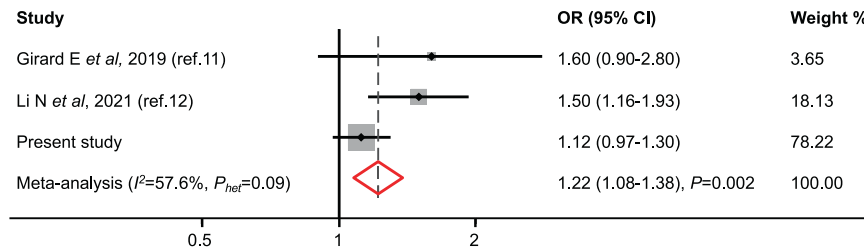


Fig. 2 Meta-analysis of studies testing the association of *FANCM* MVs with familial breast cancer risk and based on the analysis of 14,543 familial breast cancer cases and 42,211 controls. OR odds ratio, CI confidence interval, I^2 percentage of heterogeneity among the studies; P_{het} , p value calculated using the Cochran's Q -test for heterogeneity; P , p value of association from Z-test.

cancer risk, reinforcing the knowledge that *FANCM* is a breast cancer gene predisposing especially to develop ER-negative and TNBC disease subtypes.

DATA AVAILABILITY

The datasets analysed in the current study are available via the BCAC Data Access Co-ordinating Committee (bcac@medschl.cam.ac.uk) upon reasonable request. Summary-level genotype data are available via <http://bcac.ccg.medschl.cam.ac.uk> and in Supplementary Table S2. Individual-level data are available via the BCAC Data Access Co-ordinating Committee (bcac@medschl.cam.ac.uk).

REFERENCES

- Easton DF, Pharoah PD, Antoniou AC, Tischkowitz M, Tavtigian SV, Nathanson KL, et al. Gene-panel sequencing and the prediction of breast-cancer risk. *N Engl J Med.* 2015;372:2243–57.
- Breast Cancer Association C, Dorling L, Carvalho S, Allen J, Gonzalez-Neira A, Luccarini C, et al. Breast Cancer Risk Genes - Association Analysis in More than 113,000 Women. *N Engl J Med.* 2021;384:428–39.
- Hu C, Hart SN, Gnanaolivu R, Huang H, Lee KY, Na J, et al. A Population-Based Study of Genes Previously Implicated in Breast Cancer. *N Engl J Med.* 2021;384:440–51.
- Gracia-Aznarez FJ, Fernandez V, Pita G, Peterlongo P, Dominguez O, de la Hoya M, et al. Whole exome sequencing suggests much of non-BRCA1/BRCA2 familial breast cancer is due to moderate and low penetrance susceptibility alleles. *PLoS ONE.* 2013;8:e55681.
- Kiiski JI, Pelttari LM, Khan S, Freysteinsdottir ES, Reynisdottir I, Hart SN, et al. Exome sequencing identifies *FANCM* as a susceptibility gene for triple-negative breast cancer. *Proc Natl Acad Sci U S A.* 2014;111:15172–7.
- Kiiski JI, Tervasmaki A, Pelttari LM, Khan S, Mantere T, Pylkas K, et al. *FANCM* mutation c.5791C>T is a risk factor for triple-negative breast cancer in the Finnish population. *Breast Cancer Res Treat.* 2017;166:217–26.
- Figlioli G, Bogliolo M, Catucci I, Caleca L, Lasheras SV, Pujol R, et al. The *FANCM*:p.Arg658* truncating variant is associated with risk of triple-negative breast cancer. *NPJ Breast Cancer.* 2019;5:38.
- Neidhardt G, Hauke J, Ramser J, Gross E, Gehrig A, Muller CR, et al. Association Between Loss-of-Function Mutations Within the *FANCM* Gene and Early-Onset Familial Breast Cancer. *JAMA Oncol.* 2017;3:1245–8.
- Peterlongo P, Catucci I, Colombo M, Caleca L, Mucaki E, Bogliolo M, et al. *FANCM* c.5791C>T nonsense mutation (rs144567652) induces exon skipping, affects DNA repair activity and is a familial breast cancer risk factor. *Hum Mol Genet.* 2015;24:5345–55.
- Peterlongo P, Figlioli G, Deans AJ, Couch FJ. Protein truncating variants in *FANCM* and risk for ER-negative/triple negative breast cancer. *NPJ Breast Cancer.* 2021;7:130.
- Girard E, Eon-Marchais S, Olasso R, Renault AL, Damiola F, Dondon MG, et al. Familial breast cancer and DNA repair genes: Insights into known and novel susceptibility genes from the GENESIS study, and implications for multigene panel testing. *Int J Cancer.* 2019;144:1962–74.
- Li N, Lim BWX, Thompson ER, McInerney S, Zethoven M, Cheasley D, et al. Investigation of monogenic causes of familial breast cancer: data from the BEACCON case-control study. *NPJ Breast Cancer.* 2021;7:76.
- Deans AJ, West SC. *FANCM* connects the genome instability disorders Bloom's Syndrome and Fanconi Anemia. *Mol Cell.* 2009;36:943–53.
- UniProt C. UniProt: the universal protein knowledgebase in 2021. *Nucleic Acids Res.* 2021;49:D480–D9.
- Walden H, Deans AJ. The Fanconi anemia DNA repair pathway: structural and functional insights into a complex disorder. *Annu Rev Biophys.* 2014;43:257–78.

- Feng BJ. PERCH: A Unified Framework for Disease Gene Prioritization. *Hum Mutat.* 2017;38:243–51.
- Kircher M, Witten DM, Jain P, O'Roak BJ, Cooper GM, Shendure J. A general framework for estimating the relative pathogenicity of human genetic variants. *Nat Genet.* 2014;46:310–5.
- Vroling B, Heijl S. White paper: The Helix Pathogenicity Prediction Platform 2021 April 01, 2021:[arXiv:2104.01033 p.]. <https://ui.adsabs.harvard.edu/abs/2021arXiv210401033V>.
- Ioannidis NM, Rothstein JH, Pejaver V, Middha S, McDonnell SK, Baheti S, et al. REVEL: An Ensemble Method for Predicting the Pathogenicity of Rare Missense Variants. *Am J Hum Genet.* 2016;99:877–85.
- Benjamini Y, Hochberg Y. Controlling the False Discovery Rate: A Practical and Powerful Approach to Multiple Testing. *J R Stat Soc Ser B (Methodol).* 1995;57:289–300.

ACKNOWLEDGEMENTS

We thank all the individuals who took part in these studies and all the researchers, clinicians, technicians and administrative staff who have enabled this work to be carried out.

ABCS thanks the Blood bank Sanquin, The Netherlands. ABCTB Investigators: Christine Clarke, Deborah Marsh, Rodney Scott, Robert Baxter, Desmond Yip, Jane Carpenter, Alison Davis, Nirmala Pathmanathan, Peter Simpson, J. Dinny Graham, Mythily Sachchithananthan. Samples are made available to researchers on a non-exclusive basis. BIGGS thanks Niall McInerney, Gabrielle Colleran, Andrew Rowan, Angela Jones. The *BREOGAN* study would not have been possible without the contributions of the following: Manuela Gago-Dominguez, Jose Esteban Castela, Angel Carracedo, Victor Muñoz Garzón, Alejandro Novo Domínguez, Maria Elena Martinez, Sara Miranda Ponte, Carmen Redondo Marey, Maite Peña Fernández, Manuel Enguix Castelo, Maria Torres, Manuel Calaza (BREOGAN), José Antúnez, Máximo Fraga and the staff of the Department of Pathology and Biobank of the University Hospital Complex of Santiago-CHUS, Instituto de Investigación Sanitaria de Santiago, IDIS, Xerencia de Xestión Integrada de Santiago-SERGAS; Joaquín González-Carrero and the staff of the Department of Pathology and Biobank of University Hospital Complex of Vigo, Instituto de Investigación Biomedica Galicia Sur, SERGAS, Vigo, Spain. The *BSUCH* study acknowledges the Principal Investigator, Barbara Burwinkel, and, thanks Peter Bugert, Medical Faculty Mannheim. *CCGP* thanks Styliani Apostolaki, Anna Margiolaki, Georgios Nintos, Maria Perraki, Georgia Saloustrou, Georgia Sevastaki, Konstantinos Pompodakis. *CNIO-BCS* thanks Guillermo Pita, Charo Alonso, Nuria Álvarez, Pilar Zamora, Primitiva Menendez, the Human Genotyping-CEGEN Unit (CNIO). *FHRISK* and *PROCAS* thank NIHR for funding. The *GENICA* Network: Dr Margarete Fischer-Bosch-Institute of Clinical Pharmacology, Stuttgart, and University of Tübingen, Germany [RH, Hiltrud Brauch, Wing-Yee Lo], Department of Internal Medicine, Johanniter GmbH Bonn, Johanniter Krankenhaus, Bonn, Germany [YDK, Christian Baisch], Institute of Pathology, University of Bonn, Germany [Hans-Peter Fischer], Molecular Genetics of Breast Cancer, Deutsches Krebsforschungszentrum (DKFZ), Heidelberg, Germany [Ute Hamann], Institute for Prevention and Occupational Medicine of the German Social Accident Insurance, Institute of the Ruhr University Bochum (IPA), Bochum, Germany [Thomas Brüning, Beate Pesch, Sylvia Rabstein, Anne Lotz]; and Institute of Occupational Medicine and Maritime Medicine, University Medical Center Hamburg-Eppendorf, Germany [Volker Harth]. *HEBCS* thanks Johanna Kiiski, Carl Blomqvist, Taru A. Muranen, Kristiina Aittomäki, Kirsimari Aaltonen, Karl von Smitten, Irja Erkkilä, Outi Malkavaara. *HEBON* Investigators are J. Margriet Collée, Frans B. L. Hogervorst, Maartje J. Hooning, Carolien M. Kets, Peter Devilee, Christi J. van Asperen, Matti A. Rookus, Marjanka K. Schmidt, Cora M. Aalfs, Muriel A. Adank, Margreet G. E. M. Ausems, Marinus J. Blok, Encarna B. Gómez García, Bernadette A. M. Heemskerk-Gerritsen, Antoinette Hollestelle, Agnes Jager, Linetta B. Koppert, Marco Koudijs, Mieke Kriege, Hanne E. J. Meijers-Heijboer, Arjen R. Mensenkamp, Thea M. Mooij, Jan C. Oosterwijk, Ans M. W. van den Ouweland,

Frederieke H. van der Baan, Annemieke H. van der Hout, Lizet E. van der Kolk, Rob B. van der Luijt, Carolien H. M. van Deurzen, Helena C. van Doorn, Klaartje van Engelen, Liselotte P. van Hest, Theo A. M. van Os, Senno Verhoef, Maartje J. Vogel & Juul T. Wijnen. *HMBCS* thanks Peter Hillemanns, Hans Christiansen and Johann H. Karstens. *HUBCS* thanks Darya Prokofyeva and Shamil Gantsev. *KARMA* and *SASBAC* thank the Swedish Medical Research Counsel. *KBCP* thanks Eija Myöhänen. *kConFab/AOCS* wish to thank Heather Thorne, Eveline Niedermayr, all the *kConFab* research nurses and staff, the heads and staff of the Family Cancer Clinics, and the Clinical Follow Up Study (which has received funding from the NHMRC, the National Breast Cancer Foundation, Cancer Australia, and the National Institute of Health (USA)) for their contributions to this resource, and the many families who contribute to *kConFab*. *MARIE* thanks Petra Seibold, Nadia Obi, Sabine Behrens, Ursula Eilber and Muhabbet Celik. *MASTOS* thanks all the study participants and express appreciation to the doctors: Yiola Marcou, Eleni Kakouri, Panayiotis Papadopoulos, Simon Malas and Maria Daniel, as well as to all the nurses and volunteers who provided valuable help towards the recruitment of the study participants. *MBCSG* (Milan Breast Cancer Study Group): Bernard Peissel, Jacopo Azzollini, Erica Rosina, Daniela Zaffaroni, Irene Feroce, Mariarosaria Calvello, Aliana Guerrieri Gonzaga, Monica Marabelli, Davide Bondavalli and the personnel of the Cogentech Cancer Genetic Test Laboratory. The *MCCS* was made possible by the contribution of many people, including the original investigators, the teams that recruited the participants and continue working on follow-up, and the many thousands of Melbourne residents who continue to participate in the study. The following are *NBCS* Collaborators: KKS (PhD), A-LB-D (Prof Em.), ITG (Prof), KSO (Assoc. prof.), OE (MD), BN (MD), JG (MD), OSBREAC and GIGA (MSc). The *OFBCR* thanks Teresa Selander, Nayana Weerasooriya and Steve Gallinger. *ORIGO* thanks E. Krol-Warmerdam, and J. Blom for patient accrual, administering questionnaires, and managing clinical information. *PBCS* thanks Louise Brinton, Mark Sherman, Neonila Szeszenia-Dabrowska, Beata Peplonska, Witold Zatonski, Pei Chao, Michael Stagner. The *RBCS* thanks Jannet Blom, Saskia Pelders, Wendy J.C. Prager – van der Smissen, and the Erasmus MC Family Cancer Clinic. *SBCS* thanks Sue Higham, Helen Cramp, Dan Connley, Ian Brock, Sabapathy Balasubramanian and Malcolm W.R. Reed. We thank the *SEARCH* and *EPIC* teams. *SKKDKFZS* thanks all study participants, clinicians, family doctors, researchers and technicians for their contributions and commitment to this study. *SZBCS* thanks Ewa Putresza. *UBCS* thanks all study participants as well as the ascertainment, laboratory, analytics and informatics teams at Huntsman Cancer Institute and Intermountain Healthcare. We thank Justin Williams, Brandt Jones, Myke Madsen, Stacey Knight and Kerry Rowe for their important contributions to this study.

AUTHOR CONTRIBUTIONS

Conceived the study: GF, AB, PRA, PPe. Statistical analyses: GF, PPe. Coordination of the *BRIDGES* study and funding acquisition: JDen, AMD, DFE, MLus, KMi, PDPP. Administrative support and data management: MKB, QW. Provided DNA samples and data: TUA, NNA, HBec, MWB, SBe, JBen, MBerm, MJB, NVB, BBon, BBur, NJC, AC, JEC, MHC, SJC, KCz, PD, TD, CEn, ME, PAF, JDFi, MGa, MG-D, MG-C, AG-N, FGr, PGu, MG, AH, EHah, PHall, UH, PAH, WH, PHI, AHol, MJH, RH, AHow, KHu, AJage, AJak, EKK, Y-DK, VNK, ALin, JLi, JLu, AMan, SMan, SMar, DM, WGN, NOB, MIP, MUR, VRh, MAR, ES, EJS, RKS, MSh, RSi, MCS, MS, RAEMT, IT, TT, LEVDK, EMMV, BWa, XRY. Wrote the paper: GF, PRA, PPe. Contributed to paper writing: MAA, MKS, ILA, JC-C, HNe, GC-T, DGE, RLM. All authors read and approved the final version of the paper.

FUNDING

This study was supported by Associazione Italiana Ricerca sul Cancro (AIRC; IG22860) to Paolo Peterlongo and by a fellowship from Fondazione Umberto Veronesi to Gisella Figlioli. *BCAC* is funded by the European Union's Horizon 2020 Research and Innovation Programme (grant numbers 634935 and 633784 for *BRIDGES* and *B-CAST* respectively), and the *PERSPECTIVE* I&I project, funded by the Government of Canada through Genome Canada and the Canadian Institutes of Health Research, the Ministère de l'Économie et de l'Innovation du Québec through Genome Québec, the Quebec Breast Cancer Foundation. The EU Horizon 2020 Research and Innovation Programme funding source had no role in study design, data collection, data analysis, data interpretation or writing of the report. Additional funding for *BCAC* is provided via the *Confluence* project which is funded with intramural funds from the National Cancer Institute Intramural Research Program, National Institutes of Health. The *BRIDGES* panel sequencing was supported by the European Union Horizon 2020 research and innovation program *BRIDGES* (grant number, 634935) and the Wellcome Trust (v203477/Z/16/Z). The *ABCS* study was supported by the Dutch Cancer Society [grants NKI 2007-3839; 2009 4363]. The work of the *BBCS* was partly funded by ELAN-Fond of the University Hospital of Erlangen. For *BIGGS*, ES is supported by NIHR Comprehensive Biomedical Research Centre, Guy's & St. Thomas' NHS Foundation Trust in partnership with King's College London, United Kingdom. IT is supported by the Oxford Biomedical Research Centre. The *BREast* Oncology

Galician Network (BREOGAN) is funded by Acción Estratégica de Salud del Instituto de Salud Carlos III FIS PI12/02125/Cofinanciado and FEDER PI17/00918/Cofinanciado FEDER; Acción Estratégica de Salud del Instituto de Salud Carlos III FIS Intralud (PI13/01136); Programa Grupos Emergentes, Cancer Genetics Unit, Instituto de Investigación Biomedica Galicia Sur. Xerencia de Xestión Integrada de Vigo-SERGAS, Instituto de Salud Carlos III, Spain; Grant 10CSA012E, Consellería de Industria Programa Sectorial de Investigación Aplicada, PEME I + D e I + D Suma del Plan Gallego de Investigación, Desarrollo e Innovación Tecnológica de la Consellería de Industria de la Xunta de Galicia, Spain; Grant EC11-192. Fomento de la Investigación Clínica Independiente, Ministerio de Sanidad, Servicios Sociales e Igualdad, Spain; and Grant FEDER-Interconecta. Ministerio de Economía y Competitividad, Xunta de Galicia, Spain. The *BSUCH* study was supported by the Dietmar-Hopp Foundation, the Helmholtz Society and the German Cancer Research Center (DKFZ). *CCGP* is supported by funding from the University of Crete. The *CECILE* study was supported by Fondation de France, Institut National du Cancer (INCa), Ligue Nationale contre le Cancer, Agence Nationale de Sécurité Sanitaire, de l'Alimentation, de l'Environnement et du Travail (ANSES), Agence Nationale de la Recherche (ANR). The *CNIO-BCS* was supported by the Instituto de Salud Carlos III, the Red Temática de Investigación Cooperativa en Cáncer and grants from the Asociación Española Contra el Cáncer and the Fondo de Investigación Sanitario (PI11/00923 and PI12/00070). *FHRISK* and *PROCAS* are funded from NIHR grant PGFAR 0707-10031. DGE, AH and WGN are supported by the NIHR Manchester Biomedical Research Centre (IS-BRC-1215-20007). The *GC-HBOC* is funded by the German Cancer Aid (#110837, #70111850, #70114178, coordinator: RKS, Cologne) and the Federal Ministry of Education and Research (BMBF), Germany (grant no 01GY1901). LIFE Leipzig Research Center for Civilisation Diseases, Universität Leipzig, is funded by means of the European Union, by the European Regional Development Fund (ERDF), and by means of the Free State of Saxony within the framework of the excellence initiative. The *GENICA* was funded by the Federal Ministry of Education and Research (BMBF) Germany grants 01KW9975/5, 01KW9976/8, 01KW9977/0 and 01KW0114, the Robert Bosch Foundation, Stuttgart, Deutsches Krebsforschungszentrum (DKFZ), Heidelberg, the Institute for Prevention and Occupational Medicine of the German Social Accident Insurance, Institute of the Ruhr University Bochum (IPA), Bochum, as well as the Department of Internal Medicine, Johanniter GmbH Bonn, Johanniter Krankenhaus, Bonn, Germany. Generation Scotland (*GENSCOT*) received core support from the Chief Scientist Office of the Scottish Government Health Directorates [CZD/16/6] and the Scottish Funding Council [HR03006]. Genotyping of the GS:SFHS samples was carried out by the Genetics Core Laboratory at the Edinburgh Clinical Research Facility, University of Edinburgh, Scotland and was funded by the Medical Research Council UK and the Wellcome Trust (Wellcome Trust Strategic Award "Stratifying Resilience and Depression Longitudinally" (STRADL) Reference 104036/Z/14/Z). Funding for identification of cases and contribution to *BCAC* funded in part by the Wellcome Trust Seed Award "Temporal trends in incidence and mortality of molecular subtypes of breast cancer to inform public health, policy and prevention" Reference 207800/Z/17/Z. The *GESBC* was supported by the Deutsche Krebshilfe e. V. [70492] and the German Cancer Research Center (DKFZ). The *HABCS* study was supported by the Claudia von Schilling Foundation for Breast Cancer Research, by the Lower Saxonian Cancer Society, and by the Rudolf Bartling Foundation. The *HEBCS* was financially supported by the Helsinki University Hospital Research Fund, the Sigrid Juselius Foundation and the Cancer Foundation Finland. The *HEBON* study is supported by the Dutch Cancer Society grants NKI1998-1854, NKI2004-3088, NKI2007-3756, the Netherlands Organisation of Scientific Research grant NWO 91109024, the Pink Ribbon grants 110005 and 2014-187.WO76, the BBMRI grant NWO 184.021.007/CP46 and the Transcan grant JTC 2012 Cancer 12-054. The *HMBCS* was supported by a grant from the Friends of Hannover Medical School and by the Rudolf Bartling Foundation. The *HUBCS* was supported by a grant from the German Federal Ministry of Research and Education (RUS08/017), B.M. was supported by grant 17-44-020498, 17-29-06014 of the Russian Foundation for Basic Research, D.P. was supported by grant 18-29-09129 of the Russian Foundation for Basic Research, E.K was supported by the mega grant from the Government of Russian Federation (2020-220-08-2197), and the study was performed as part of the assignment of the Ministry of Science and Higher Education of the Russian Federation (№AAAA-A16-116020350032-1). Financial support for *KARBAC* was provided through the regional agreement on medical training and clinical research (ALF) between Stockholm County Council and Karolinska Institutet, the Swedish Cancer Society, The Gustav V Jubilee foundation and Bert von Kantzows foundation. The *KARMA* study was supported by Märit and Hans Rausing's Initiative Against Breast Cancer. The *KBCP* was financially supported by the special Government Funding (VTR) of Kuopio University Hospital grants, Cancer Fund of North Savo, the Finnish Cancer Organizations, and by the strategic funding of the University of Eastern Finland. *kConFab* is supported by a grant from the National Breast Cancer Foundation, and previously by the National Health and Medical Research Council (NHMRC), the Queensland Cancer Fund, the Cancer Councils of New South Wales, Victoria, Tasmania and South Australia, and the Cancer Foundation of Western Australia. Financial support for the *AOCS* was provided by the United States Army Medical Research and Materiel Command [DAMD17-01-1-0729], Cancer Council

Victoria, Queensland Cancer Fund, Cancer Council New South Wales, Cancer Council South Australia, The Cancer Foundation of Western Australia, Cancer Council Tasmania and the National Health and Medical Research Council of Australia (NHMRC; 400413, 400281, 199600). GCT and PW are supported by the NHMRC. RB was a Cancer Institute NSW Clinical Research Fellow. The *MARIE* study was supported by the Deutsche Krebshilfe e.V. [70-2892-BR I, 106332, 108253, 108419, 110826, 110828], the Hamburg Cancer Society, the German Cancer Research Center (DKFZ) and the Federal Ministry of Education and Research (BMBF) Germany [01KH0402]. The *MASTOS* study was supported by "Cyprus Research Promotion Foundation" grants 0104/13 and 0104/17, and the Cyprus Institute of Neurology and Genetics. *MBCSG* is supported by grants from the Italian Association for Cancer Research (AIRC). The *MCCS* was further augmented by Australian National Health and Medical Research Council grants 209057, 396414 and 1074383 and by infrastructure provided by Cancer Council Victoria. Cases and their vital status were ascertained through the Victorian Cancer Registry and the Australian Institute of Health and Welfare, including the National Death Index and the Australian Cancer Database. The *NBCS* has received funding from the K.G. Jebsen Centre for Breast Cancer Research; the Research Council of Norway grant 193387/V50 (to A-LB-D and VNK) and grant 193387/H10 (to A-LB-D and VNK), South Eastern Norway Health Authority (grant 39346 to A-LB-D) and the Norwegian Cancer Society (to A-LB-D and VNK). The Ontario Familial Breast Cancer Registry (*OFBCR*) was supported by grant U01CA164920 from the USA National Cancer Institute of the National Institutes of Health. The *ORIGO* study was supported by the Dutch Cancer Society (RUL 1997-1505) and the Biobanking and Biomolecular Resources Research Infrastructure (BBMRI-NL CP16). The *PBCS* was funded by Intramural Research Funds of the National Cancer Institute, Department of Health and Human Services, USA. Genotyping for *PLCO* was supported by the Intramural Research Program of the National Institutes of Health, NCI, Division of Cancer Epidemiology and Genetics. The *PLCO* is supported by the Intramural Research Program of the Division of Cancer Epidemiology and Genetics and supported by contracts from the Division of Cancer Prevention, National Cancer Institute, National Institutes of Health. The *RBCS* was funded by the Dutch Cancer Society (DDHK 2004-3124, DDHK 2009-4318). The *SASBAC* study was supported by funding from the Agency for Science, Technology and Research of Singapore (A*STAR), the US National Institute of Health (NIH) and the Susan G. Komen Breast Cancer Foundation. *SEARCH* is funded by Cancer Research UK [C490/A10124, C490/A16561] and supported by the UK National Institute for Health Research Biomedical Research Centre at the University of Cambridge. The University of Cambridge has received salary support for PDPP from the NHS in the East of England through the Clinical Academic Reserve. *SKKDKFZS* is supported by the DKFZ. The *SMC* is funded by the Swedish Cancer Foundation and the Swedish Research Council (VR 2017-00644) grant for the Swedish Infrastructure for Medical Population-based Life-course Environmental Research (*SIMPLER*). The *SZBCS* was supported by Grant PBZ_KBN_122/P05/2004 and the program of the Minister of Science and Higher Education under the name "Regional Initiative of Excellence" in 2019-2022 project number 002/RID/2018/19 amount of financing 12,000,000 PLN. *UBCS* was supported by funding from National Cancer Institute (NCI) grant R01 CA163353 (to NJC) and the Women's Cancer Center at the Huntsman Cancer Institute (HCI). Data collection for *UBCS* was supported by the Utah Population Database (UPDB) and Utah Cancer Registry (UCR). The UPDB is supported

by HCI (including Huntsman Cancer Foundation, HCF), the University of Utah, and NCI grant P30 CA2014. The UCR is funded by the NCI's SEER Program, Contract No. HHSN2612018000161, the US Center for Disease Control and Prevention's National Program of Cancer Registries (Cooperative Agreement No. NU58DP006320), the University of Utah, and HCF.

COMPETING INTERESTS

MWB conducts research funded by Amgen, Novartis and Pfizer. PAF conducts research funded by Amgen, Novartis and Pfizer; he received Honoraria from Roche, Novartis and Pfizer. All the other authors declare no competing interests.

ETHICS APPROVAL

All contributing studies were approved by the relevant ethical review boards and used appropriate consent procedures. The research conformed to the principles of the Helsinki Declaration.

ADDITIONAL INFORMATION

Supplementary information The online version contains supplementary material available at <https://doi.org/10.1038/s41431-022-01257-w>.

Correspondence and requests for materials should be addressed to Paolo Peterlongo.

Reprints and permission information is available at <http://www.nature.com/reprints>

Publisher's note Springer Nature remains neutral with regard to jurisdictional claims in published maps and institutional affiliations.



Open Access This article is licensed under a Creative Commons Attribution 4.0 International License, which permits use, sharing, adaptation, distribution and reproduction in any medium or format, as long as you give appropriate credit to the original author(s) and the source, provide a link to the Creative Commons licence, and indicate if changes were made. The images or other third party material in this article are included in the article's Creative Commons licence, unless indicated otherwise in a credit line to the material. If material is not included in the article's Creative Commons licence and your intended use is not permitted by statutory regulation or exceeds the permitted use, you will need to obtain permission directly from the copyright holder. To view a copy of this licence, visit <http://creativecommons.org/licenses/by/4.0/>.

© The Author(s) 2023

Gisella Figlioli¹, Amandine Billaud¹, Thomas U. Ahearn², Natalia N. Antonenkova³, Heiko Becher⁴, Matthias W. Beckmann⁵, Sabine Behrens⁶, Javier Benitez^{7,8}, Marina Bermisheva⁹, Marinus J. Blok¹⁰, Natalia V. Bogdanova^{3,11,12}, Bernardo Bonanni¹³, Barbara Burwinkel^{14,15}, Nicola J. Camp¹⁶, Archie Campbell^{17,18}, Jose E. Castela¹⁹, Melissa H. Cessna²⁰, Stephen J. Chanock², NBCS Collaborators, Kamila Czene²¹, Peter Devilee^{22,23}, Thilo Dörk¹², Christoph Engel^{24,25}, Mikael Eriksson²¹, Peter A. Fasching⁵, Jonine D. Figueroa^{2,18,26}, Marika Gabrielson²¹, Manuela Gago-Dominguez^{27,28}, Montserrat Garcia-Closas², Anna González-Neira²⁹, Felix Grassmann^{21,30}, Pascal Guénel³¹, Melanie Gündert^{14,15,32}, Andreas Hadjisavvas³³, Eric Hahnen^{34,35}, Per Hall^{21,36}, Ute Hamann³⁷, Patricia A. Harrington³⁸, Wei He²¹, Peter Hillemanns¹², Antoinette Hollestelle³⁹, Maartje J. Hoening³⁹, Reiner Hoppe^{40,41}, Anthony Howell⁴², Keith Humphreys²¹, KConFab Investigators, Agnes Jager³⁹, Anna Jakubowska^{43,44}, Elza K. Khusnutdinova^{9,45}, Yon-Dschun Ko⁴⁶, Vessela N. Kristensen⁴⁷, Annika Lindblom^{48,49}, Jolanta Lissowska⁵⁰, Jan Lubinski⁴³, Arto Mannermaa^{51,52,53}, Siranoush Manoukian⁵⁴, Sara Margolin^{36,55}, Dimitrios Mavroudis⁵⁶, William G. Newman^{57,58}, Nadia Obi⁴, Mihalis I. Panayiotidis³³, Muhammad U. Rashid^{37,59}, Valerie Rhenius³⁸, Matti A. Rookus⁶⁰, Emmanouil Saloustros⁶¹, Elinor J. Sawyer⁶², Rita K. Schmutzler^{34,35,63}, Mitul Shah³⁸, Reijo Sironen^{51,52,64}, Melissa C. Southey^{65,66,67}, Maija Suvanto⁶⁸, Rob A. E. M. Tollenaar⁶⁹, Ian Tomlinson⁷⁰, Thérèse Truong³¹, Lizet E. van der Kolk⁷¹, Elke M. van Veen^{57,58}, Barbara Wappenschmidt^{34,35}, Xiaohong R. Yang¹², Manjeet K. Bolla⁷², Joe Dennis⁷², Alison M. Dunning³⁸, Douglas F. Easton^{38,72}, Michael Lush⁷², Kyriaki Michailidou^{72,73}, Paul D. P. Pharoah^{38,72}, Qin Wang⁷², Muriel A. Adank⁷¹, Marjanka K. Schmidt^{50,74}, Irene L. Andrulis^{75,76}, Jenny Chang-Claude^{67,77}, Heli Nevanlinna⁶⁸, Georgia Chenevix-Trench⁷⁸, D. Gareth Evans^{57,58}, Roger L. Milne^{65,67,79}, Paolo Radice⁸⁰ and Paolo Peterlongo¹✉

¹IFOM ETS - The AIRC Institute of Molecular Oncology, Genome Diagnostics Program, Milan, Italy. ²Division of Cancer Epidemiology and Genetics, National Cancer Institute, National Institutes of Health, Department of Health and Human Services, Bethesda, MD, USA. ³N.N. Alexandrov Research Institute of Oncology and Medical Radiology, Minsk, Belarus. ⁴University Medical Center Hamburg-Eppendorf, Institute of Medical Biometry and Epidemiology, Hamburg, Germany. ⁵University Hospital Erlangen, Department of Gynecology and Obstetrics, Comprehensive Cancer Center Erlangen-EMN, Friedrich-Alexander University Erlangen-Nuremberg, Erlangen, Germany. ⁶German Cancer Research

Center (DKFZ), Division of Cancer Epidemiology, Heidelberg, Germany. ⁷Spanish National Cancer Research Centre (CNIO), Human Genetics Group, Madrid, Spain. ⁸Centre for Biomedical Network Research on Rare Diseases (CIBERER), Instituto de Salud Carlos III, Madrid, Spain. ⁹Institute of Biochemistry and Genetics of the Ufa Federal Research Centre of the Russian Academy of Sciences, Ufa, Russia. ¹⁰Maastricht University Medical Center, Department of Clinical Genetics, Maastricht, the Netherlands. ¹¹Hannover Medical School, Department of Radiation Oncology, Hannover, Germany. ¹²Hannover Medical School, Gynaecology Research Unit, Hannover, Germany. ¹³IEO, European Institute of Oncology IRCCS, Division of Cancer Prevention and Genetics, Milan, Italy. ¹⁴German Cancer Research Center (DKFZ), Molecular Epidemiology Group, C080 Heidelberg, Germany. ¹⁵University of Heidelberg, Molecular Biology of Breast Cancer, University Womens Clinic Heidelberg, Heidelberg, Germany. ¹⁶University of Utah, Department of Internal Medicine and Huntsman Cancer Institute, Salt Lake City, UT, USA. ¹⁷University of Edinburgh, Centre for Genomic and Experimental Medicine, Institute of Genetics & Cancer, Edinburgh, UK. ¹⁸The University of Edinburgh, Usher Institute of Population Health Sciences and Informatics, Edinburgh, UK. ¹⁹Instituto de Investigación Sanitaria Galicia Sur (IISGS), Xerencia de Xestión Integrada de Vigo-SERGAS, Oncology and Genetics Unit, Vigo, Spain. ²⁰Intermountain Healthcare, Salt Lake City, UT, USA. ²¹Karolinska Institutet, Department of Medical Epidemiology and Biostatistics, Stockholm, Sweden. ²²Leiden University Medical Center, Department of Pathology, Leiden, the Netherlands. ²³Leiden University Medical Center, Department of Human Genetics, Leiden, the Netherlands. ²⁴University of Leipzig, Institute for Medical Informatics, Statistics and Epidemiology, Leipzig, Germany. ²⁵University of Leipzig, LIFE - Leipzig Research Centre for Civilization Diseases, Leipzig, Germany. ²⁶The University of Edinburgh, Cancer Research UK Edinburgh Centre, Edinburgh, UK. ²⁷Fundación Pública Galega de Medicina Xenómica, Instituto de Investigación Sanitaria de Santiago de Compostela (IDIS), Complejo Hospitalario Universitario de Santiago, SERGAS, Genomic Medicine Group, International Cancer Genetics and Epidemiology Group, Santiago de Compostela, Spain. ²⁸University of California San Diego, Moores Cancer Center, La Jolla, CA, USA. ²⁹Spanish National Cancer Research Centre (CNIO), Human Cancer Genetics Programme, Madrid, Spain. ³⁰Health and Medical University, Potsdam, Germany. ³¹INSERM, University Paris-Saclay, Center for Research in Epidemiology and Population Health (CESP), Team Exposome and Heredity, Villejuif, France. ³²Helmholtz Zentrum München, German Research Center for Environmental Health, Institute of Diabetes Research, Neuherberg, Germany. ³³The Cyprus Institute of Neurology & Genetics, Department of Cancer Genetics, Therapeutics and Ultrastructural Pathology, Nicosia, Cyprus. ³⁴Faculty of Medicine and University Hospital Cologne, University of Cologne, Center for Familial Breast and Ovarian Cancer, Cologne, Germany. ³⁵Faculty of Medicine and University Hospital Cologne, University of Cologne, Center for Integrated Oncology (CIO), Cologne, Germany. ³⁶Södersjukhuset, Department of Oncology, Stockholm, Sweden. ³⁷German Cancer Research Center (DKFZ), Molecular Genetics of Breast Cancer, Heidelberg, Germany. ³⁸University of Cambridge, Centre for Cancer Genetic Epidemiology, Department of Oncology, Cambridge, UK. ³⁹Erasmus MC Cancer Institute, Department of Medical Oncology, Rotterdam, the Netherlands. ⁴⁰Dr. Margarete Fischer-Bosch-Institute of Clinical Pharmacology, Stuttgart, Germany. ⁴¹University of Tübingen, Tübingen, Germany. ⁴²University of Manchester, Division of Cancer Sciences, Manchester, UK. ⁴³Pomeranian Medical University, Department of Genetics and Pathology, International Hereditary Cancer Center, Szczecin, Poland. ⁴⁴Pomeranian Medical University, Independent Laboratory of Molecular Biology and Genetic Diagnostics, Szczecin, Poland. ⁴⁵Bashkir State University, Department of Genetics and Fundamental Medicine, Ufa, Russia. ⁴⁶Department of Internal Medicine, Johanniter GmbH Bonn, Johanniter Krankenhaus, Bonn, Germany. ⁴⁷Department of Medical Genetics, Oslo University Hospital and University of Oslo, Oslo, Norway. ⁴⁸Karolinska Institutet, Department of Molecular Medicine and Surgery, Stockholm, Sweden. ⁴⁹Karolinska University Hospital, Department of Clinical Genetics, Stockholm, Sweden. ⁵⁰M. Skłodowska-Curie National Research Oncology Institute, Department of Cancer Epidemiology and Prevention, Warsaw, Poland. ⁵¹University of Eastern Finland, Translational Cancer Research Area, Kuopio, Finland. ⁵²University of Eastern Finland, Institute of Clinical Medicine, Pathology and Forensic Medicine, Kuopio, Finland. ⁵³Kuopio University Hospital, Biobank of Eastern Finland, Kuopio, Finland. ⁵⁴Fondazione IRCCS Istituto Nazionale dei Tumori di Milano, Unit of Medical Genetics, Department of Medical Oncology and Hematology, Milan, Italy. ⁵⁵Karolinska Institutet, Department of Clinical Science and Education, Södersjukhuset, Stockholm, Sweden. ⁵⁶University Hospital of Heraklion, Department of Medical Oncology, Heraklion, Greece. ⁵⁷University of Manchester, Manchester Academic Health Science Centre, Division of Evolution and Genomic Sciences, School of Biological Sciences, Faculty of Biology, Medicine and Health, Manchester, UK. ⁵⁸St Mary's Hospital, Manchester University NHS Foundation Trust, Manchester Academic Health Science Centre, North West Genomics Laboratory Hub, Manchester Centre for Genomic Medicine, Manchester, UK. ⁵⁹Shaukat Khanum Memorial Cancer Hospital and Research Centre (SKMCH & RC), Department of Basic Sciences, Lahore, Pakistan. ⁶⁰The Netherlands Cancer Institute - Antoni van Leeuwenhoek hospital, Division of Psychosocial Research and Epidemiology, Amsterdam, the Netherlands. ⁶¹University Hospital of Larissa, Department of Oncology, Larissa, Greece. ⁶²King's College London, School of Cancer & Pharmaceutical Sciences, Comprehensive Cancer Centre, Guy's Campus, London, UK. ⁶³Faculty of Medicine and University Hospital Cologne, University of Cologne, Center for Molecular Medicine Cologne (MMC), Cologne, Germany. ⁶⁴Kuopio University Hospital, Imaging Center, Department of Clinical Pathology, Kuopio, Finland. ⁶⁵Monash University, Precision Medicine, School of Clinical Sciences at Monash Health, Clayton, Victoria, Australia. ⁶⁶The University of Melbourne, Department of Clinical Pathology, Melbourne, Victoria, Australia. ⁶⁷Cancer Council Victoria, Cancer Epidemiology Division, Melbourne, Victoria, Australia. ⁶⁸University of Helsinki, Department of Obstetrics and Gynecology, Helsinki University Hospital, Helsinki, Finland. ⁶⁹Leiden University Medical Center, Department of Surgery, Leiden, the Netherlands. ⁷⁰The University of Edinburgh, Cancer Research Centre, Edinburgh, UK. ⁷¹The Netherlands Cancer Institute - Antoni van Leeuwenhoek hospital, Family Cancer Clinic, Amsterdam, the Netherlands. ⁷²University of Cambridge, Centre for Cancer Genetic Epidemiology, Department of Public Health and Primary Care, Cambridge, UK. ⁷³The Cyprus Institute of Neurology & Genetics, Biostatistics Unit, Nicosia, Cyprus. ⁷⁴The Netherlands Cancer Institute, Division of Molecular Pathology, Amsterdam, the Netherlands. ⁷⁵Lunenfeld-Tanenbaum Research Institute of Mount Sinai Hospital, Fred A. Litwin Center for Cancer Genetics, Toronto, Ontario, Canada. ⁷⁶University of Toronto, Department of Molecular Genetics, Toronto, Ontario, Canada. ⁷⁷University Medical Center Hamburg-Eppendorf, Cancer Epidemiology Group, University Cancer Center Hamburg (UCCH), Hamburg, Germany. ⁷⁸QIMR Berghofer Medical Research Institute, Department of Genetics and Computational Biology, Brisbane, Queensland, Australia. ⁷⁹The University of Melbourne, Centre for Epidemiology and Biostatistics, Melbourne School of Population and Global Health, Melbourne, Victoria, Australia. ⁸⁰Fondazione IRCCS Istituto Nazionale dei Tumori (INT), Unit of Molecular Bases of Genetic Risk and Genetic Testing, Department of Experimental Oncology, Milan, Italy. *Lists of authors and their affiliations appear at the end of the paper. ⁸²email: paolo.peterlongo@ifom.eu

NBCS COLLABORATORS

Kristine K. Sahlberg^{81,82}, Anne-Lise Børresen-Dale^{83,84}, Inger Torhild Gram⁸⁵, Karina Standahl Olsen⁸⁵, Olav Engebråten^{82,84}, Bjørn Naume⁸⁶, Jürgen Geisler⁸⁷, OSBREAC and Grethe I. Grenaker Alnæs⁴⁷

⁸¹Department of Research, Vestre Viken Hospital, Drammen, Norway. ⁸²Department of Tumor Biology, Institute for Cancer Research, Oslo University Hospital - Radiumhospitalet, Oslo, Norway. ⁸³Department of Cancer Genetics, Institute for Cancer Research, Oslo University Hospital-Radiumhospitalet, Oslo, Norway. ⁸⁴Institute of Clinical Medicine, Faculty of Medicine, University of Oslo, Oslo, Norway. ⁸⁵Department of Community Medicine, The Arctic University of Norway, Tromsø, Norway. ⁸⁶Department of Oncology, Division of Surgery and Cancer and Transplantation Medicine, Oslo University Hospital-Radiumhospitalet, Oslo, Norway. ⁸⁷Department of Oncology, Akershus University Hospital, Lørenskog, Norway

OSBREAC

Tone F. Bathen⁸⁸, Elin Borgen⁸⁹, Britt Fritzman⁹⁰, Øystein Garred⁸⁹, Gry Aarum Geitvik⁸⁹, Solveig Hofvind⁹¹, Anita Langerød⁸⁹, Ole Christian Lingjærde⁹², Gunhild Mari Mælandsmo⁸⁹, Hege G. Russnes⁸⁹, Helle Kristine Skjerven⁹³ and Therese Sørli⁸⁹

⁸⁸Norwegian University of Science and Technology, Trondheim, Norway. ⁸⁹Oslo University Hospital, Oslo, Norway. ⁹⁰Østfold Hospital, Sarpsborg, Norway. ⁹¹Cancer Registry of Norway, Oslo, Norway. ⁹²University of Oslo, Oslo, Norway. ⁹³Vestre Viken Hospital Trust, Drammen, Norway

KCONFAB INVESTIGATORS

David Amor⁹⁴, Lesley Andrews⁹⁵, Yoland Antill⁹⁶, Rosemary Balleine⁹⁷, Jonathan Beesley⁹⁸, Ian Bennett⁹⁹, Michael Bogwitz¹⁰⁰, Leon Botes¹⁰¹, Meagan Brennan¹⁰², Melissa Brown¹⁰³, Michael Buckley¹⁰⁴, Jo Burke¹⁰⁵, Phyllis Butow¹⁰⁶, Liz Caldon¹⁰⁷, Ian Campbell¹⁰⁸, Michelle Cao¹⁰⁹, Anannya Chakrabarti¹¹⁰, Deepa Chauhan¹¹¹, Manisha Chauhan¹¹², Georgia Chenevix-Trench¹¹⁸, Alice Christian¹¹³, Paul Cohen¹¹⁴, Alison Colley¹¹⁵, Ashley Crook¹¹⁶, James Cui¹¹⁷, Eliza Courtney¹¹⁶, Margaret Cummings¹¹⁸, Sarah-Jane Dawson¹¹⁹, Anna deFazio¹²⁰, Martin Delatycki¹²¹, Rebecca Dickson¹²², Joanne Dixon¹²³, Ted Edkins¹²⁴, Stacey Edwards¹²⁵, Gelareh Farshid¹²⁶, Anna Fellows¹²⁷, Georgina Fenton¹²⁸, Michael Field¹²⁹, James Flanagan¹³⁰, Peter Fong¹³¹, Laura Forrest¹³², Stephen Fox¹³³, Juliet French¹³⁴, Michael Friedlander¹³⁵, Clara Gaff¹³⁶, Mike Gattas¹³⁷, Peter George¹³⁸, Sian Greening¹³⁹, Marion Harris¹⁴⁰, Stewart Hart¹⁴¹, Nick Hayward¹⁴², John Hopper¹⁴³, Cass Hoskins¹⁴⁴, Clare Hunt¹⁴⁵, Paul James¹⁴⁶, Mark Jenkins¹⁴³, Alexa Kidd¹⁴⁷, Judy Kirk¹⁴⁸, Jessica Koehler⁹⁵, James Kollias¹⁴⁹, Sunil Lakhani¹⁵⁰, Mitchell Lawrence¹⁵¹, Jason Lee¹⁵², Shuai Li¹⁵³, Geoff Lindeman¹⁵⁴, Lara Lipton¹⁵⁵, Liz Lobb¹⁵⁶, Sherene Loi¹⁵⁷, Graham Mann¹⁵⁸, Deborah Marsh¹⁵⁹, Sue Anne McLachlan¹⁶⁰, Bettina Meiser⁹⁵, Roger Milne^{65,67,79}, Sophie Nightingale¹⁶¹, Shona O'Connell¹⁴⁵, Sarah O'Sullivan¹⁶², David Gallego Ortega¹⁶³, Nick Pachter¹⁶⁴, Jia-Min Pang¹⁶⁵, Gargi Pathak¹⁶⁶, Briony Patterson¹⁶⁷, Amy Pearn¹⁶⁸, Kelly Phillips¹⁶⁹, Ellen Pieper¹⁷⁰, Susan Ramus¹⁷¹, Edwina Rickard¹⁷², Bridget Robinson¹⁷³, Mona Saleh¹⁷⁴, Anita Skandarajah¹⁷⁵, Elizabeth Salisbury¹⁷⁶, Christobel Saunders¹⁷⁷, Jodi Saunus¹⁷⁸, Rodney Scott¹⁷⁹, Clare Scott¹⁸⁰, Adrienne Sexton¹⁸¹, Andrew Shelling¹⁸², Peter Simpson¹⁸³, Melissa Southey^{65,66,67}, Amanda Spurdle¹⁸⁴, Jessica Taylor¹⁸⁵, Renea Taylor¹⁸⁶, Heather Thorne¹⁸⁷, Alison Trainer¹⁸⁸, Kathy Tucker¹⁸⁹, Jane Visvader¹⁹⁰, Logan Walker¹⁹¹, Rachael Williams¹⁹², Ingrid Winship¹⁹³, Mary Ann Young¹⁹⁴ and Milita Zaheed¹⁹⁵

⁹⁴Medical Geneticist, Genetic Health Services, Victoria Royal Children's Hospital, Melbourne, VIC 3050, Australia. ⁹⁵Hereditary Cancer Clinic, Prince of Wales Hospital, Randwick, NSW 2031, Australia. ⁹⁶Department Haem and Medical Oncology, Peter MacCallum Cancer Centre, St Andrews Place East Melbourne, Melbourne, VIC 3002, Australia. ⁹⁷Department of Translational Oncology, C/- Department of Medical Oncology, Westmead Hospital, Westmead, NSW 2145, Australia. ⁹⁸Research Officer, Queensland Institute of Medical Research, Herston Road, Herston, QLD 4002, Australia. ⁹⁹Silverton Place, 101 Wickham, Terrace Brisbane, QLD 4000, Australia. ¹⁰⁰Familial Cancer Centre, The Royal Melbourne Hospital, Grattan Street Parkville, Melbourne, VIC 3050, Australia. ¹⁰¹Clinical Nurse Specialist, Hereditary Cancer Centre, Prince of Wales Hospital, Barker St, Randwick, NSW 203, Australia. ¹⁰²NSW Breast Cancer Institute, PO Box 143, Westmead, NSW 2145, Australia. ¹⁰³Department of Biochemistry, University of Queensland, St. Lucia, QLD 4072, Australia. ¹⁰⁴Molecular and Cytogenetics Unit, Prince of Wales Hospital, Randwick, NSW 2031, Australia. ¹⁰⁵CON Cancer Care, 2 Melville St, Hobart, TAS 7000, Australia. ¹⁰⁶Medical Psychology Unit, Royal Prince Alfred Hospital, Camperdown, NSW 2204, Australia. ¹⁰⁷Replication and Genome Stability, Cancer Division, Garvan Institute of Medical Research, 370 Victoria Street, Darlinghurst, NSW 2010, Australia. ¹⁰⁸Peter MacCallum Cancer Centre, St Andrew's Place, East Melbourne, VIC 3002, Australia. ¹⁰⁹Tasmanian Clinical Genetics Service, Tasmanian Health Service Royal, Hobart Hospital GPO Box 1061, Hobart, TAS 7001, Australia. ¹¹⁰Specialist Breast Cancer Surgery, Richmond, VIC 3121, Australia. ¹¹¹School of Psychology, Brennan MacCallum (Building A18), University of Sydney, Sydney, NSW 2006, Australia. ¹¹²St Vincents Hospital Cancer Genetics Clinic, The Kinghorn Cancer Centre, Sydney, NSW, Australia. ¹¹³Genetics Department, Central Region Genetics Service, Wellington Hospital, New Wellington, New Zealand. ¹¹⁴Director of Gynaecological Cancer Research, St John of God Subiaco Hospital, 12 Salvado Road, Subiaco, WA 6008, Australia. ¹¹⁵Department of Clinical Genetics, Liverpool Health Service, PO Box 103, Liverpool, NSW 2170, Australia. ¹¹⁶Department of Clinical Genetics, Level 3E, Royal North Shore Hospital, St Leonards, NSW 2065, Australia. ¹¹⁷Epidemiology and Preventive Medicine, Monash University, Prahan, VIC 3004, Australia. ¹¹⁸Department of Pathology, University of Queensland Medical School, Herston, NSW 4006, Australia. ¹¹⁹Molecular Genetics Unit, Peter MacCallum Cancer Centre, Melbourne, VIC, Australia. ¹²⁰Department of Gynaecological Oncology, Westmead Institute for Cancer Research, Westmead Hospital, Westmead, NSW 2145, Australia. ¹²¹Director, Clinical Genetics Austin Health, Heidelberg Repatriation Hospital, PO Box 5444, Heidelberg West, VIC 3081, Australia. ¹²²Associate Genetic Counsellor, Level 2, Block 51 Royal North Shore Hospital, North Shore, NSW 2408, Australia. ¹²³Central Regional Genetic Services, Wellington Hospital Private bag 7902, Wellington, New Zealand. ¹²⁴Clinical Chemistry, Princess Margret Hospital for Children, Box D184, Perth, WA 6001, Australia. ¹²⁵Department of Biochemistry and Molecular Biology, University of Queensland, St Lucia Qld 4072, Australia. ¹²⁶Tissue Pathology, IMVS, Adelaide, SA 5000, Australia. ¹²⁷Molecular Diagnostic Development, Pathology Department, Peter MacCallum Cancer Centre, Melbourne East Melbourne, VIC 3002, Australia. ¹²⁸South West Family Cancer Clinic, Liverpool Hospital, Liverpool, NSW 1871, Australia. ¹²⁹Clinical Geneticist, Royal North Shore Hospital, Level 2, Vindin House, St Leonards, NSW 2065, Australia. ¹³⁰Epigenetics Unit, Department of Surgery and Oncology, Imperial College London, London W12 0NN, England. ¹³¹Medical Oncology Department, Regional Cancer and Blood, Services, Level 1 Building 7, Auckland City Hospital, 2 Park Rd. Grafton, Auckland 1023, New Zealand. ¹³²Psychosocial Cancer Genetics Research Group, Parkville Familial Cancer Centre, 305 Grattan Street, Melbourne, VIC 3000, Australia. ¹³³Pathology Department, Level 1, Peter MacCallum Cancer Centre, St Andrew's Place, East Melbourne, VIC 3002, Australia. ¹³⁴School of Molecular and Microbial Sciences, University of Queensland, St Lucia, Qld 4072, Australia. ¹³⁵Professor of Medicine, Department of Medical Oncology, Prince of Wales Hospital, Randwick, NSW 2031, Australia. ¹³⁶Victorian Clinical Genetics Service, Royal Melbourne Hospital, Parkville, VIC 3052, Australia. ¹³⁷Queensland Clinical Genetic Service, Royal Children's Hospital, Bramston Terrace, Herston, QLD 4020, Australia. ¹³⁸Clinical Biochemistry Unit, Canterbury Health Labs, PO Box 151, Christchurch, New Zealand. ¹³⁹Illawarra Cancer Centre, Wollongong Hospital, Private Mail Bag 8808, South Coast Mail Centre, Wollongong, NSW 2521, Australia. ¹⁴⁰Familial Cancer Clinic, Peter MacCallum Cancer Centre, St Andrews Place East Melbourne, Melbourne, VIC 3002, Australia. ¹⁴¹Breast and Ovarian Cancer Genetics, Monash Medical Centre, 871 Centre Road, Bentleigh East, Clayton, VIC 3165, Australia. ¹⁴²Queensland Institute for Medical Research, Royal Brisbane Hospital, Post Office, Herston, QLD 4029, Australia. ¹⁴³Centre for M.E.G.A. Epidemiology, University of Melbourne, Level 1, 723 Swanston Street, Carlton, VIC 3010, Australia. ¹⁴⁴Parkville Familial Cancer Centre, Peter MacCallum Cancer Centre & The Royal Melbourne Hospital, Melbourne, VIC 3000, Australia. ¹⁴⁵Southern Health Familial Cancer Centre, Monash Medical Centre, Special Medicine Building, 246 Clayton Rd Clayton Victoria 3168, Clayton, Australia. ¹⁴⁶Clinical Geneticist, Genetic Health Services, Monash Medical Centre, Clayton, VIC 3168, Australia. ¹⁴⁷Clinical Genetics Departments, Central Regional Genetics Service, Wellington Hospital, Newtown, New Zealand. ¹⁴⁸Familial Cancer Service, Department of Medicine, Westmead Hospital, Westmead, NSW 2145, Australia. ¹⁴⁹Breast Endocrine and Surgical Unit, Royal Adelaide Hospital, North Terrace, Adelaide, SA 5000, Australia. ¹⁵⁰UQ Centre for Clinical Research, Level 6 Building 71/918, University of Queensland, The Royal Brisbane Women's Hospital, Herston, QLD 4029, Australia. ¹⁵¹Prostate Cancer Research Program, 19 Innovation Walk, Level 3, Monash University, Clayton, VIC 3800, Australia. ¹⁵²Epigenetics and Disease Laboratory, QIMR Berghofer Medical Research Institute, Brisbane, QLD 4006, Australia. ¹⁵³Centre for Epidemiology and Biostatistics, Melbourne School of Population and Global Health, The University of Melbourne Level 3, 207 Bouverie Street, Carlton, VIC 3053, Australia. ¹⁵⁴Breast Cancer Laboratory, Walter and Eliza Hall Institute, PO Royal Melbourne Hospital, Parkville, VIC 3050, Australia. ¹⁵⁵Medical Oncology and Clinical Haematology Unit, Western Hospital, Footscray, SA, Australia. ¹⁵⁶Medical Psychology Research Unit, Room 332, Brennan MacCallum Building (A18), The University of Sydney, Camperdown, NSW 2006, Australia. ¹⁵⁷Head of the Translational Breast Cancer, Genomics and Therapeutics Laboratory, Medical Oncologists, The Peter MacCallum Cancer Centre, Melbourne, VIC 3000, Australia. ¹⁵⁸Westmead Institute for Cancer Research, Westmead Millennium Institute, Westmead, NSW 2145, Australia. ¹⁵⁹Kolling Institute of Medical Research, Royal North Shore Hospital, St Leonards, NSW 2065, Australia. ¹⁶⁰Department of Oncology, St Vincent's Hospital, 41 Victoria Parade, Fitzroy, VIC 3065, Australia. ¹⁶¹Western Health and Peter MacCallum Cancer Centre, Consultant, General, Breast and Melanoma Surgeon, St Andrew's Place, East Melbourne, VIC 3002, Australia. ¹⁶²Genetic Services of Western, Level 3 Agnes Walsh House, 374 Bagot Road, Subiaco, WA 6008, Australia. ¹⁶³Tumour Development Group, Garvan Institute of Medical Research, The Kinghorn Cancer Centre, 370 Victoria St, Darlinghurst, NSW 2010, Australia. ¹⁶⁴Familial Cancer and Clinical Genetics, Royal Melbourne Hospital, Grattan Street, Parkville, VIC 3050, Australia. ¹⁶⁵Molecular Pathology Department, Peter MacCallum Cancer Centre, Melbourne, VIC 3000, Australia. ¹⁶⁶Clinical Geneticist, Genetic Services of Western Australia Women and Newborn Health Service Agnes Walsh House, King Edward, Memorial Hospital 374 Bagot Road, Subiaco, WA 6008, Australia. ¹⁶⁷Tas Clinical Genetics Service, Royal Hobart Hospital, GPO Box 1061, Hobart Tasmania, TAS 7001, Australia. ¹⁶⁸The Gene Council, Perth, Australia, PO Box 510, North Perth, WA 6906, Australia. ¹⁶⁹Department of Medical Oncology, Peter MacCallum Cancer Centre, St Andrew's Place, East Melbourne, VIC 3002, Australia. ¹⁷⁰Associate Genetic Counsellor, Parkville Familial Cancer Centre and Genomic Medicine, VCCC Grattan Street, Melbourne, VIC 3000, Australia. ¹⁷¹School of Women's and Children's Health Adult Cancer Program Level 2, Lowy Cancer Research Centre Cnr, High and Botany St, UNSW, Sydney, NSW, Australia. ¹⁷²Familial Cancer Centre, Westmead Hospital, Westmead, NSW 2145, Australia. ¹⁷³Oncology Service, Christchurch Hospital Private Bag 4710, Christchurch, New Zealand. ¹⁷⁴Centre for Genetic Education, Prince of Wales Hospital, Randwick,

NSW 2031, Australia. ¹⁷⁵Deputy Director General Surgery, The Royal Melbourne Hospital, Consultant Breast and Endocrine Surgeon, The Royal Melbourne Hospital and Peter Mac Callum Centre, The University of Melbourne, Melbourne, VIC, Australia. ¹⁷⁶Anatomical Pathology, Conjoint Associate Professor, UNSW, Prince of Wales Hospital Randwick, Randwick 2031 NSW, Australia. ¹⁷⁷Director Breast Surgery, The Royal Melbourne Hospital, The Royal Melbourne Hospital and Peter Mac Callum Centre, The University of Melbourne, Melbourne, VIC, Australia. ¹⁷⁸Breast Pathology, University of Queensland Centre for Clinical Research, Building 71/918 Royal Brisbane and Women's Hospital, Herston, QLD 4029, Australia. ¹⁷⁹Hunter Area Pathology Service, John Hunter Hospital, Locked Bag 1 Regional Mail Centre, Randwick, NSW 2310, Australia. ¹⁸⁰Research Department, WEHI C/o Royal Melbourne Hospital, Parkville, VIC 3050, Australia. ¹⁸¹Familial Cancer Centre, Royal Melbourne Hospital, Grattan Street, Parkville, VIC 3050, Australia. ¹⁸²Obstetrics and Gynecology, University of Auckland, Auckland, New Zealand. ¹⁸³The University of Queensland, Building 71/918, RBWH Campus, Herston, QLD 4029, Australia. ¹⁸⁴Cancer Unit, Queensland Institute of Medical Research, Herston, QLD 4029, Australia. ¹⁸⁵Familial Cancer and Genetics Medicine, Royal Melbourne Hospital, 2nd Floor Grattan Street, Parkville, VIC 3050, Australia. ¹⁸⁶Deputy Head, Cancer Program, Monash University Rm 349, Level 3, Building 76, 19 Innovation Walk, Clayton, VIC 3800, Australia. ¹⁸⁷Research Department, Peter MacCallum Cancer Centre, St Andrew's Place, East Melbourne, VIC 3002, Australia. ¹⁸⁸University of NSW, Prince of Wales Hospital, Barker Street, Randwick, NSW 2031, Australia. ¹⁸⁹Hereditary Cancer Clinic, Prince of Wales Hospital, Randwick, NSW 2031, Australia. ¹⁹⁰The Walter and Eliza Hall Institute of Medical Research, Post Office Royal Melbourne Hospital, Parkville, VIC 3050, Australia. ¹⁹¹Molecular Cancer Epidemiology Laboratory, Queensland Institute of Medical Research, P.O. Royal Brisbane Hospital, Herston, QLD 4027, Australia. ¹⁹²Family Cancer Clinic, St Vincent's Hospital, Darlinghurst, NSW 2010, Australia. ¹⁹³Department of Genetics, Royal Melbourne Hospital, Parkville, VIC 3050, Australia. ¹⁹⁴Genome.One, 370 Victoria St Darlinghurst, Darlinghurst 2010 NSW, Australia. ¹⁹⁵Staff Specialist, Prince of Wales Hereditary Cancer Centre, Level 1, Bright Building, Barker Street, Randwick, NSW 2031, Australia.