



HAL
open science

Regulation of effector-gene expression as concerted waves in *Leptosphaeria maculans*: a twoplayers game

Colin Clairret, Elise J Gay, Antoine Porquier, Thierry Rouxel, Marie-Hélène Balesdent, Isabelle Fudal, Jessica L. Soyer

► To cite this version:

Colin Clairret, Elise J Gay, Antoine Porquier, Thierry Rouxel, Marie-Hélène Balesdent, et al.. Regulation of effector-gene expression as concerted waves in *Leptosphaeria maculans*: a twoplayers game. 16th European Conference on Fungal Genetics, Mar 2023, Innsbruck, Austria. hal-04231683

HAL Id: hal-04231683

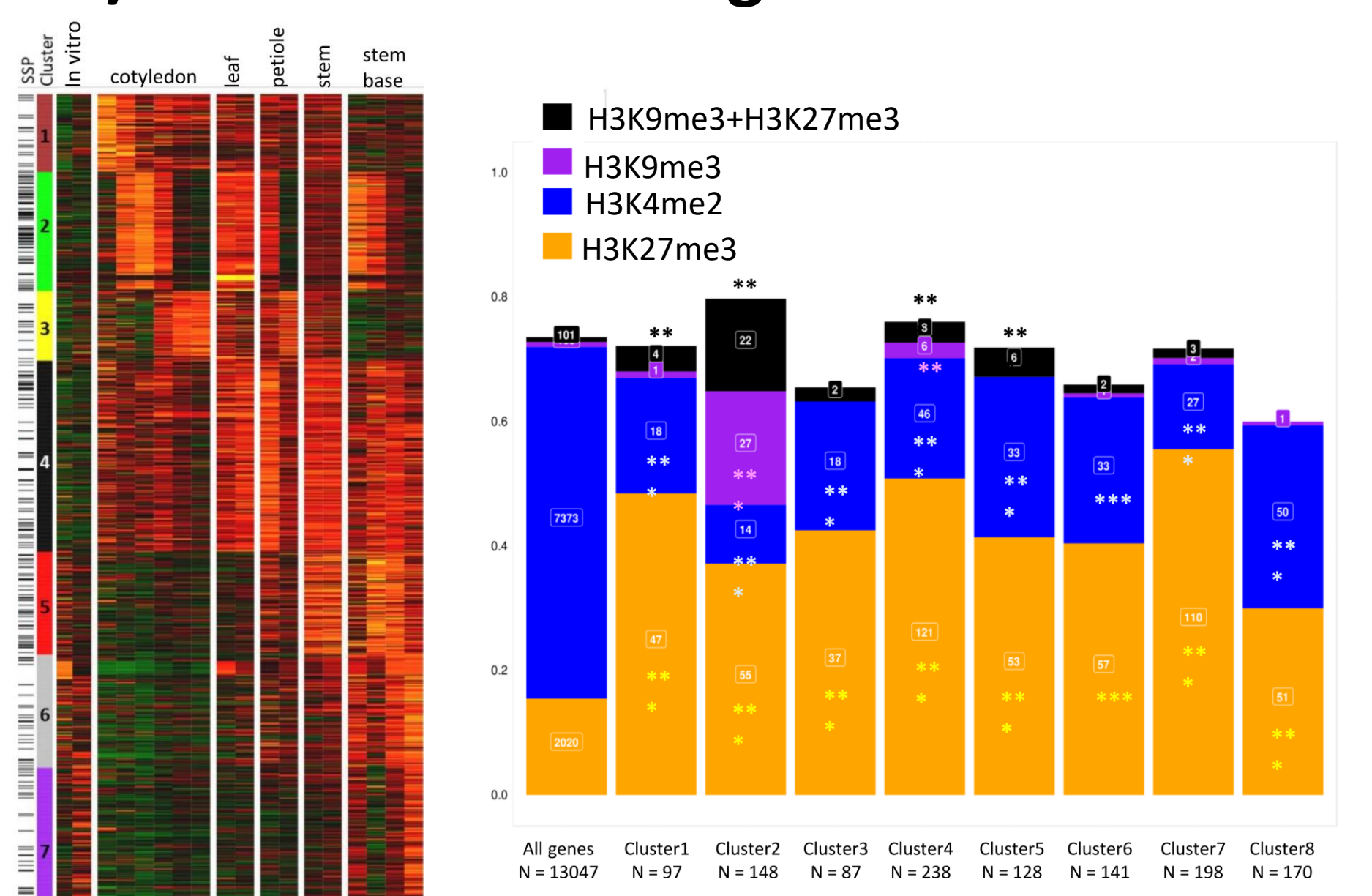
<https://hal.science/hal-04231683>

Submitted on 10 Oct 2023

HAL is a multi-disciplinary open access archive for the deposit and dissemination of scientific research documents, whether they are published or not. The documents may come from teaching and research institutions in France or abroad, or from public or private research centers.

L'archive ouverte pluridisciplinaire **HAL**, est destinée au dépôt et à la diffusion de documents scientifiques de niveau recherche, publiés ou non, émanant des établissements d'enseignement et de recherche français ou étrangers, des laboratoires publics ou privés.

01/ Context: effector-genes are enriched in heterochromatin domains and expressed as concerted waves during infection



- Effector-genes of *L. maculans* are expressed as waves during infection of *Brassica napus* (oilseed rape)
- Genes induced during infection are associated with heterochromatin (H3K9me3- and / or H3K27me3-domains) *in vitro*
- Previous finding that KMT1 (responsible for H3K9me3 deposition) represses effector-gene expression *in vitro*
- The transcription factor (TF) Ppf2 increasingly found as involved in pathogenicity and regulation of effector-gene expression in plant-pathogenic fungi

Our working hypothesis: a two-layer regulatory network

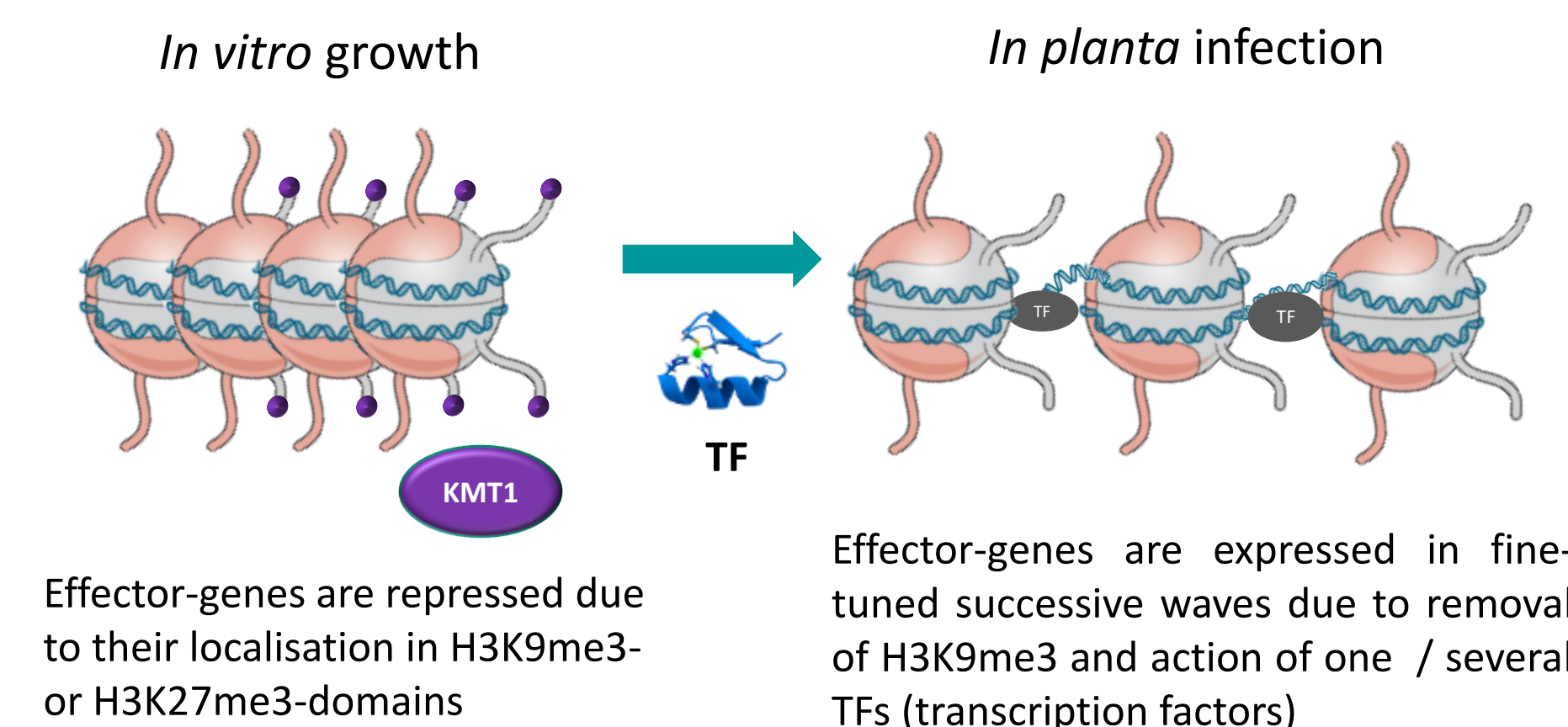


Figure adapted from Soyer et al., 2014; 2015.

Successive waves of *L. maculans* gene expression during infection of oilseed rape. Left panel: heatmap of the genes overexpressed *in planta* compared to *in vitro* conditions; right panel: up-regulated genes *in planta* are enriched in heterochromatin *in vitro*. Figure adapted from Gay et al., 2021.

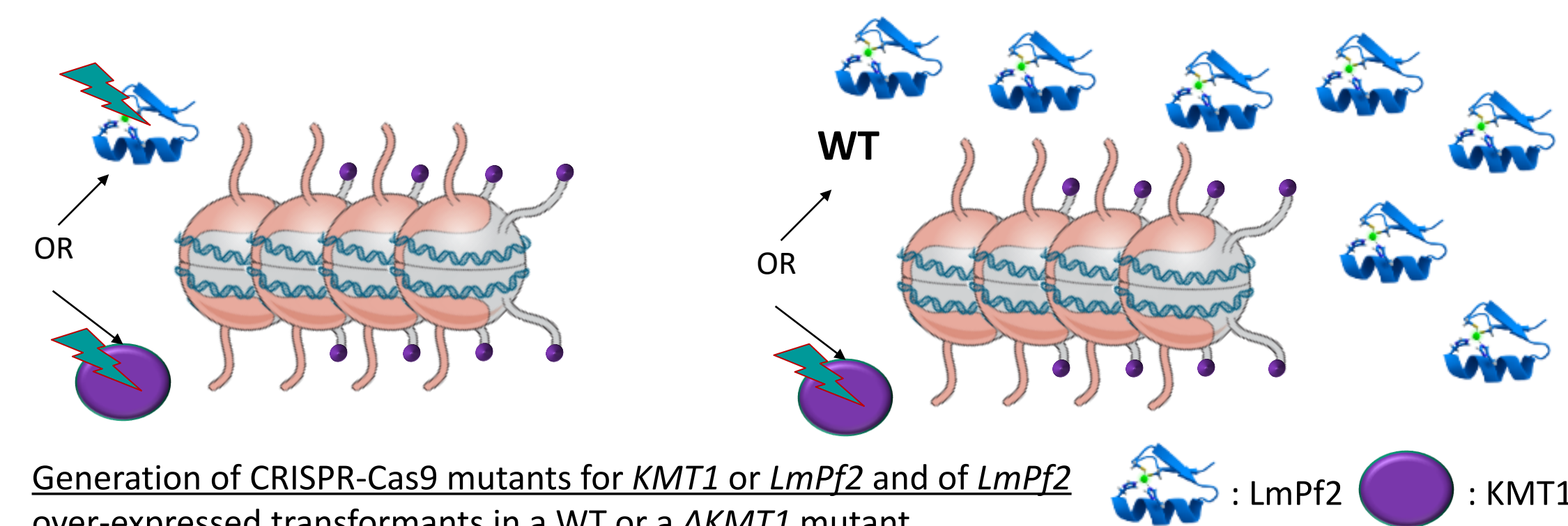
Objective: investing role of KMT1 and LmPpf2 in the regulation of (effector) gene expression in *L. maculans*

02/ Methodology

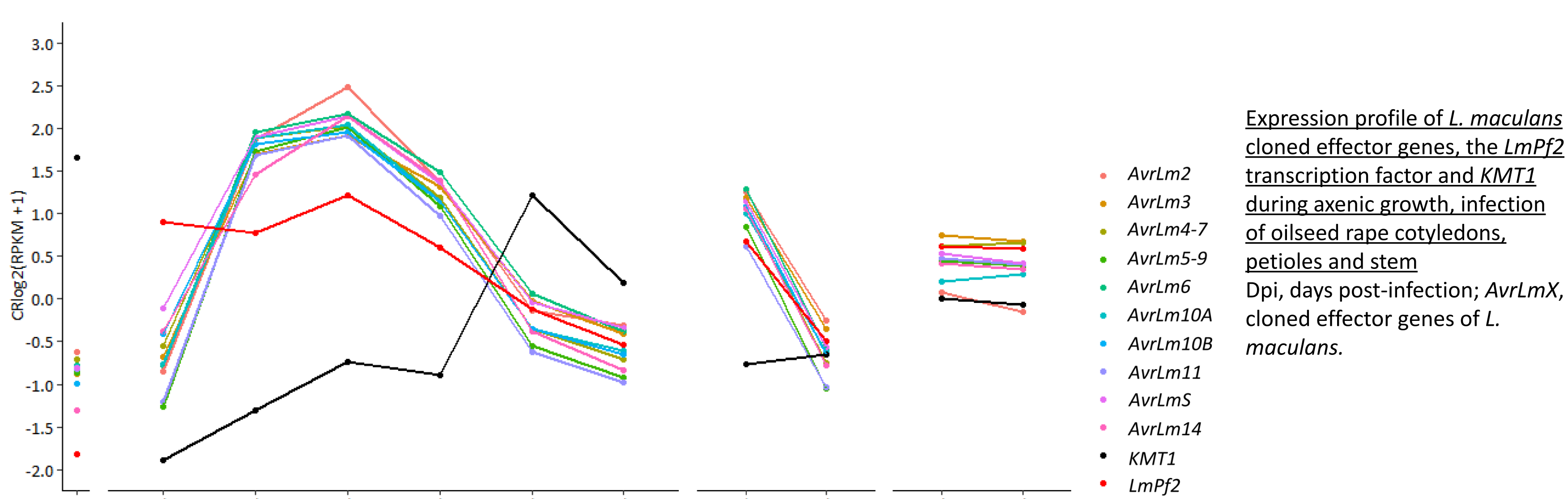
- Analysis of expression of *LmPpf2*, *KMT1* and cloned effector-genes
- CRISPR-Cas9 inactivation of *LmPpf2* and *KMT1*
- Over-expression of *LmPpf2* in a WT and a $\Delta KMT1$ background (i.e. WT_oPpf2, $\Delta KMT1$ _oPpf2)
- Phenotypic characterization of the generated transformants
- Analyses of gene expression in the transformants via RNA-seq

1. Inactivations of *LmPpf2* or *KMT1*

2. Over-expression of *LmPpf2*



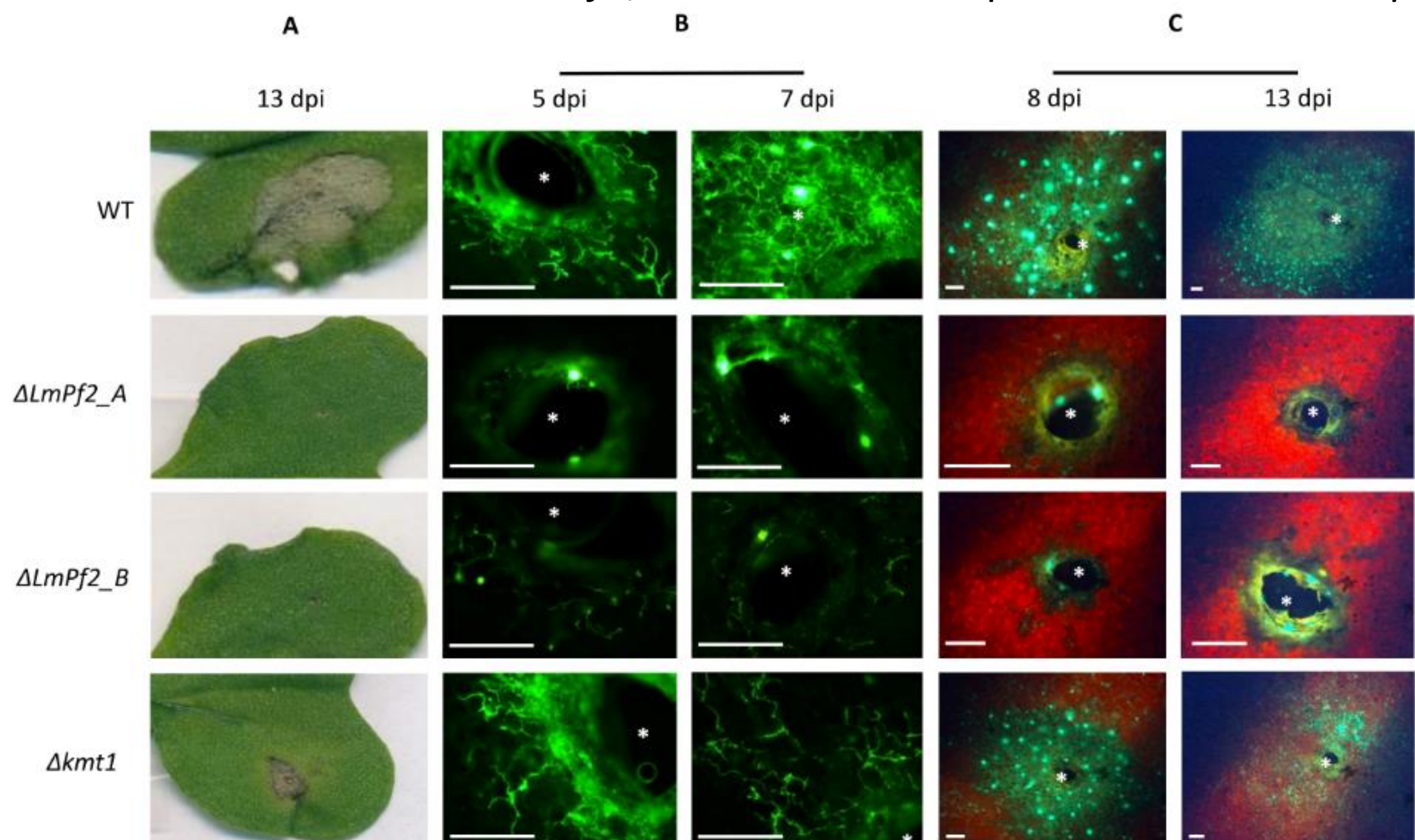
03/ Expression of *KMT1*, *LmPpf2* and cloned effector-genes of *L. maculans*



- Cloned effector-genes are repressed *in vitro*, highly expressed during asymptomatic infection of oilseed rape (i.e. cotyledon 5, 7, 9 dpi; petiole 7 dpi; stem 14, 28 dpi)
- *KMT1* has an opposite expression pattern to that of effector-genes
- *LmPpf2* expression follows the same pattern as cloned effector-genes

04/ *LmPpf2* and *KMT1* are involved in pathogenicity and regulation of cloned effector genes of *L. maculans*

Inoculation of $\Delta LmPpf2$, $\Delta KMT1$ on a susceptible cultivar of *B. napus*



Effect of *LmPpf2* and *KMT1* inactivations on pathogenicity of *L. maculans*. A, Pictures of symptoms 13 dpi; B, fluorescence images of cotyledons infected by GFP mutants and the WT 5 and 7 dpi (confocal microscope); C, fluorescence images of cotyledons infected by GFP mutants and the WT 8 and 13 dpi (fluorescence binocular). White asterisk, infection site; scale bars, 1mm; dpi, days post-inoculation.

Expression of cloned effector genes *in vitro*, in the transformants generated, compared to the WT (RNA-seq data)

name	TE ^a	H3K4me2 ^b	H3K9me3 ^b	H3K27me3 ^b	$\Delta kmt1$ ^c	$\Delta LmPpf2$ ^c	JN2_oPpf2 ^c	$\Delta kmt1$ _oPpf2 ^b
AvrLm3	yes	-	all included	-	up	-	-	up
AvrLm4-7	yes	-	all included	-	-	-	-	up
AvrLm14	yes	-	all included	-	-	-	-	up
AvrLm6	yes	-	all included	-	-	-	-	up
AvrLm2	yes	-	5'_included	-	down	-	-	up
AvrLm10_A	yes	-	all included	-	down	-	-	up
AvrLm10_B	yes	-	all included	all included	-	down	-	up
AvrLm5-Lep2	yes	-	all included	-	-	-	-	up
AvrLm5-9	yes	-	all included	-	-	-	-	-
AvrLm11	yes	-	all included	-	-	-	-	-

^aGenes located in a TE-rich genomic context;

^bGenes associated with H3K4me2, H3K9me3 or H3K27me3 during axenic culture in the wild type strain;

^cGenes deregulated in a given transformant compared to the WT strain during axenic culture.

- $\Delta LmPpf2$ mutants: unable to colonize *B. napus*; $\Delta KMT1$ mutants: less symptoms than the WT
- Over-expression of *LmPpf2* in a WT background: no influence on effector-gene expression
- Over-expression of *LmPpf2* in a $\Delta KMT1$ background: up-regulation of effector-genes located in heterochromatin-domains

05/ *LmPpf2* and *KMT1* are acting together to regulate expression of effector-genes

	Total genes	Effector genes	H3K4me2 genes ^a	H3K9me3 genes ^a	H3K27me3 genes ^a	H3K9me3/H3K27me3 genes ^a	
Up-regulated	$\Delta kmt1$	129	22*	22 [#]	3	64*	4*
	$\Delta LmPpf2$	202	20	68 [#]	4	57*	5*
	WT_oPpf2	247	46*	46 [#]	2	101*	6*
	$\Delta kmt1$ _oPpf2_B	931	154*	233 [#]	25*	329*	24*
Down-regulated	$\Delta kmt1$	143	27*	35 [#]	10*	42*	9*
	$\Delta LmPpf2$	225	40*	58 [#]	4	88*	10*
	WT_oPpf2	277	19	110 [#]	1	60*	3
	$\Delta kmt1$ _oPpf2_B	861	83	364 [#]	11	182*	14*

^aGenes associated with H3K4me2, H3K9me3, H3K27me3 or H3K9me3 and H3K27me3 during axenic growth of the WT isolate;

[#]genes statistically under-represented in a given category; *genes statistically enriched in a given category; Statistical analyses were performed using χ^2 , P value < 0.05.

Carbohydrate uptake Oxydo-reduction processes

Over-expression of *LmPpf2* in a $\Delta KMT1$ background ($\Delta KMT1$ _oPpf2):

- Enhanced effect on gene expression, compared to effect observed by removal of H3K9me3 or over-expression of *LmPpf2*, individually
- 20 out of 36 effector-genes associated with H3K9me3 are up-regulated in the
- Among the 256 effector-genes over-expressed naturally *in planta* in the WT, 45% were up-regulated in at least one of the transformants, 34% in the $\Delta KMT1$ _oPpf2 transformants

Contact

Jessica Soyer: jessica.soyer@inrae.fr

INRAE - UR BIOGER

Campus Agro Paris-Saclay

22 Place de l'Agronomie

91120 Palaiseau

References

Clairet et al., 2022. DOI: 10.1101/2021.12.15.472773
Gay et al., BMC Biology, 2021 DOI: 10.1186/s12915-021-00989-3
Soyer et al., 2014. DOI: 10.1371/journal.pgen.1004227
Soyer et al., 2015. DOI: 10.1016/j.jpb.2015.05.025
Soyer et al., 2021. 10.1007/s10577-021-09658-1

Funding

INRAE SPE Chromadyn

ANR CHOPIN

06/ Take-home message & future work

- *KMT1* inhibits expression of genes naturally over-expressed *in planta*, *LmPpf2* positively regulates these genes
- Regulation of the expression of effector-genes is a two layer-mechanisms
- What are the direct targets of *LmPpf2*?