



## Subsequent female breast cancer risk associated with anthracycline chemotherapy for childhood cancer

Yuehan Wang, Céçile M. Ronckers, Flora Elizabeth van Leeuwen, Chaya S. Moskowitz, Wendy M. Leisenring, Gregory T. Armstrong, Florent de Vathaire, Melissa Maria Hudson, Claudia Elisabeth Kuehni, Michael A. Arnold, et al.

### ► To cite this version:

Yuehan Wang, Céçile M. Ronckers, Flora Elizabeth van Leeuwen, Chaya S. Moskowitz, Wendy M. Leisenring, et al.. Subsequent female breast cancer risk associated with anthracycline chemotherapy for childhood cancer. *Nature Medicine*, 2023, 29 (9), pp.2268-2277. 10.1038/s41591-023-02514-1 . hal-04229501

**HAL Id: hal-04229501**

**<https://hal.science/hal-04229501>**

Submitted on 12 Oct 2023

**HAL** is a multi-disciplinary open access archive for the deposit and dissemination of scientific research documents, whether they are published or not. The documents may come from teaching and research institutions in France or abroad, or from public or private research centers.


L'archive ouverte pluridisciplinaire **HAL**, est destinée au dépôt et à la diffusion de documents scientifiques de niveau recherche, publiés ou non, émanant des établissements d'enseignement et de recherche français ou étrangers, des laboratoires publics ou privés.

# Subsequent female breast cancer risk associated with anthracycline chemotherapy for childhood cancer

Received: 11 January 2023

Accepted: 26 July 2023

Published online: 11 September 2023

 Check for updates

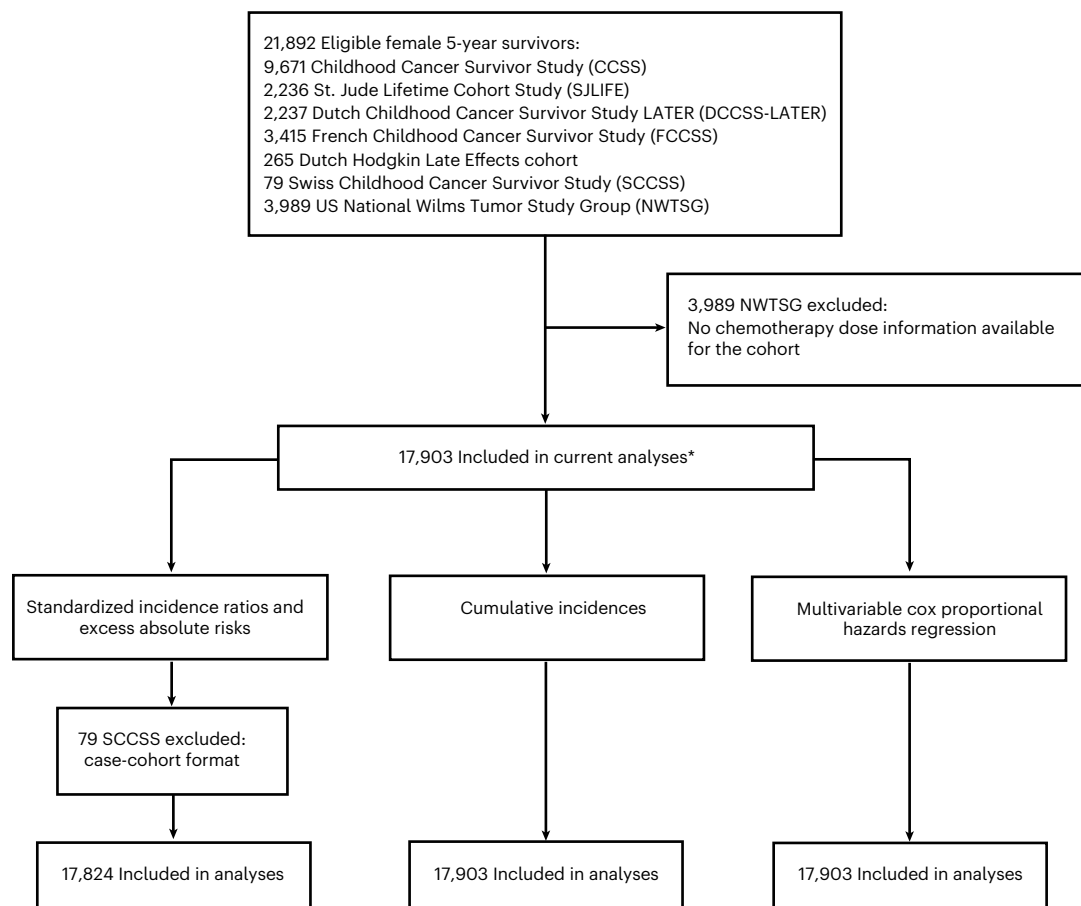
Yuehan Wang<sup>1</sup>✉, Cécile M. Ronckers<sup>1,2,3</sup>, Flora E. van Leeuwen<sup>4</sup>, Chaya S. Moskowitz<sup>5</sup>, Wendy Leisenring<sup>6</sup>, Gregory T. Armstrong<sup>7</sup>, Florent de Vathaire<sup>8</sup>, Melissa M. Hudson<sup>7</sup>, Claudia E. Kuehni<sup>9,10</sup>, Michael A. Arnold<sup>11,12</sup>, Charlotte Demoor-Goldschmidt<sup>8,13,14</sup>, Daniel M. Green<sup>15</sup>, Tara O. Henderson<sup>15</sup>, Rebecca M. Howell<sup>16</sup>, Matthew J. Ehrhardt<sup>7</sup>, Joseph P. Neglia<sup>17</sup>, Kevin C. Oeffinger<sup>18</sup>, Helena J. H. van der Pal<sup>1</sup>, Leslie L. Robison<sup>7</sup>, Michael Schaapveld<sup>4</sup>, Lucie M. Turcotte<sup>17</sup>, Nicolas Waespe<sup>9,10,19</sup>, Leontien C. M. Kremer<sup>1,20</sup>, Jop C. Teepen<sup>1</sup> & The International Consortium for Pooled Studies on Subsequent Malignancies after Childhood and Adolescent Cancer\*

Anthracycline-based chemotherapy is associated with increased subsequent breast cancer (SBC) risk in female childhood cancer survivors, but the current evidence is insufficient to support early breast cancer screening recommendations for survivors treated with anthracyclines. In this study, we pooled individual patient data of 17,903 survivors from six well-established studies, of whom 782 (4.4%) developed a SBC, and analyzed dose-dependent effects of individual anthracycline agents on developing SBC and interactions with chest radiotherapy. A dose-dependent increased SBC risk was seen for doxorubicin (hazard ratio (HR) per 100 mg m<sup>-2</sup>: 1.24, 95% confidence interval (CI): 1.18–1.31), with more than twofold increased risk for survivors treated with ≥200 mg m<sup>-2</sup> cumulative doxorubicin dose versus no doxorubicin (HR: 2.50 for 200–299 mg m<sup>-2</sup>, HR: 2.33 for 300–399 mg m<sup>-2</sup> and HR: 2.78 for ≥400 mg m<sup>-2</sup>). For daunorubicin, the associations were not statistically significant. Epirubicin was associated with increased SBC risk (yes/no, HR: 3.25, 95% CI: 1.59–6.63). For patients treated with or without chest irradiation, HRs per 100 mg m<sup>-2</sup> of doxorubicin were 1.11 (95% CI: 1.02–1.21) and 1.26 (95% CI: 1.17–1.36), respectively. Our findings support that early initiation of SBC surveillance may be reasonable for survivors who received ≥200 mg m<sup>-2</sup> cumulative doxorubicin dose and should be considered in SBC surveillance guidelines for survivors and future treatment protocols.

Over the past six decades, survival rates for childhood cancer have improved markedly in resource-rich countries due to improvements in treatment and supportive care. Unfortunately, the life expectancy and quality of life of long-term survivors are compromised by long-term

adverse effects of treatments such as subsequent neoplasms<sup>1–4</sup>. Breast cancer is one of the most frequent subsequent malignant neoplasms among female childhood cancer survivors<sup>5–7</sup>. Based on strong evidence regarding the effect of chest radiotherapy on subsequent breast cancer

A full list of affiliations appears at the end of the paper. ✉e-mail: [y.wang-2@prinsesmaximacentrum.nl](mailto:y.wang-2@prinsesmaximacentrum.nl)



**Fig. 1 | Cohort composition diagram of eligible female 5-year childhood cancer survivors in each analysis.** \*The number of included survivors in each analysis may vary due to missing values of analysis variables.

(SBC) risk, the International Guideline Harmonization Group (IGHG) recommends initiation of annual breast cancer surveillance for female survivors who received  $\geq 10$  Gray (Gy) chest radiotherapy at age 25 years or  $\geq 8$  years from radiation<sup>8</sup>, which is earlier than the population screening programs for breast cancer that typically recommend initiation of screening at age 40 years or 50 years<sup>9</sup>.

Over time, childhood cancer treatments have been modified to include decreased radiation doses and volumes and increased use of chemotherapy, especially anthracyclines<sup>10</sup>. Several previous studies have shown that anthracycline exposure is associated with increased SBC risk<sup>7,11–15</sup>, including several Childhood Cancer Survivor Study (CCSS) reports<sup>7,11,14,15</sup>, the St. Jude Lifetime Cohort Study (SJLIFE)<sup>13</sup> and the Dutch Childhood Cancer Survivor Study LATER (DCCSS-LATER)<sup>12</sup>. These studies investigated the dose-dependent associations between the sum of anthracycline agents dose and SBC risk. Only a few studies evaluated the dose effects of doxorubicin, an individual anthracycline agent, on SBC risk<sup>12,14,16</sup>. However, these studies all used tertiles of cumulative doxorubicin dose, which are derived from cumulative dose distributions that are study dependent. There is currently no data on dose effects with regard to SBC risks for other individual anthracycline agents (for example, daunorubicin). Moreover, there is little information on the joint effects of anthracyclines and chest radiotherapy<sup>14</sup>. The current evidence is insufficient to alter the SBC screening recommendations because there was inconsistent evidence on dose thresholds for determining which survivors are at moderate or high risk. Furthermore, there were no data on possible differences in dose effects with regard to SBC risk for the different individual anthracycline agents owing to the limited

number of survivors treated with these specific chemotherapy agents in individual cohort studies.

To address these knowledge gaps, detailed treatment data from a large number of individuals are required. Therefore, we pooled individual patient data from six well-established childhood cancer survivor studies in Europe and North America with the aim of estimating the dose-dependent effects of specific anthracycline agents on developing SBC in female childhood cancer survivors, as well as interactions with chest radiotherapy and age at primary cancer diagnosis.

## Results

In total, our pooled cohort included 17,903 5-year survivors, with data from five cohort studies (CCSS: 9,671 women, SJLIFE: 2,236 women, DCCSS-LATER: 2,237 women, French Childhood Cancer Survivor Study (FCCSS): 3,415 women and Dutch Hodgkin Late Effects cohort: 265 women), and one case-cohort study (Swiss Childhood Cancer Survivor Study (SCCSS): 79 women) in Europe and North America (Fig. 1).

Among the eligible 17,903 5-year survivors, the median age at primary childhood cancer diagnosis was 6.7 years (interquartile range (IQR): 2.8–13.0), with leukemia (25.5%), central nervous system tumor (16.5%) and Hodgkin lymphoma (11.7%) as the most frequent childhood cancer types (Table 1 and Supplementary Tables 1 and 2), with some variations by cohort (Supplementary Table 3). Of all survivors, 5,714 (31.9%) received anthracyclines without chest radiotherapy, 1,962 (11.0%) received chest radiotherapy without anthracyclines, 1,634 (9.1%) received both anthracyclines and chest radiotherapy, 7,096 (39.6%) received neither treatment and for 1,497 (8.4%), it was

**Table 1 | Demographic and treatment characteristics of 17,903 female 5-year childhood cancer survivors (primary cancer diagnosis year 1946–2012) overall and by subsequent breast cancer status**

Characteristic	Total (n=17,903)	Subsequent breast cancer <sup>a</sup> (n=782)	No subsequent breast cancer (n=17,121)
	No. (%)	No. (%)	No. (%)
Primary childhood cancer <sup>b</sup>			
Leukemia	4,574 (25.5)	81 (10.4)	4,493 (26.2)
Non-Hodgkin lymphoma	1,097 (6.1)	37 (4.7)	1,060 (6.2)
Hodgkin lymphoma	2,101 (11.7)	405 (51.8)	1,696 (9.9)
Central nervous system tumor	2,946 (16.5)	14 (1.8)	2,932 (17.1)
Neuroblastoma	1,657 (9.3)	15 (1.9)	1,642 (9.6)
Retinoblastoma	426 (2.4)	2 (0.3)	424 (2.5)
Renal tumor	1,372 (7.7)	45 (5.8)	1,327 (7.8)
Bone tumor	1,459 (8.1)	106 (13.6)	1,353 (7.9)
Soft tissue tumor	1,405 (7.8)	55 (7.0)	1,350 (7.9)
Germ cell tumor	440 (2.5)	9 (1.2)	431 (2.5)
Other malignant epithelial	297 (1.7)	11 (1.4)	286 (1.7)
Other <sup>c</sup>	129 (0.7)	2 (0.2)	127 (0.8)
Cumulative doxorubicin dose (mg m <sup>-2</sup> )			
0	11,170 (62.4)	431 (55.1)	10,739 (62.7)
<100	912 (5.1)	16 (2.0)	896 (5.2)
100–199	1,795 (10.0)	69 (8.8)	1,726 (10.1)
200–299	1,026 (5.7)	67 (8.6)	959 (5.6)
300–399	1,012 (5.7)	64 (8.2)	948 (5.5)
≥400	779 (4.4)	58 (7.4)	721 (4.2)
Unknown <sup>d</sup>	1,209 (6.8)	77 (9.8)	1,132 (6.6)
Cumulative daunorubicin dose (mg m <sup>-2</sup> )			
0	14,630 (81.7)	684 (87.5)	13,946 (81.5)
<100	623 (3.5)	7 (0.9)	616 (3.6)
100–199	953 (5.3)	16 (2.0)	937 (5.5)
≥200	645 (3.6)	17 (2.2)	628 (3.7)
Unknown <sup>e</sup>	1,052 (5.9)	58 (7.4)	994 (5.8)
Epirubicin			
No	16,637 (92.9)	717 (91.7)	15,920 (93.0)
Yes	325 (1.8)	9 (1.2)	316 (1.8)
Unknown	941 (5.3)	56 (7.2)	885 (5.2)
Idarubicin			
No	16,843 (94.1)	725 (92.7)	16,118 (94.1)
Yes	107 (0.6)	1 (0.1)	106 (0.6)
Unknown	953 (5.3)	56 (7.2)	897 (5.2)
CED <sup>f</sup> (mg m <sup>-2</sup> )			
0	7,951 (44.4)	301 (38.5)	7,650 (44.7)
<6,000	3,069 (17.1)	94 (12.0)	2,975 (17.4)
6,000–17,999	3,899 (21.8)	192 (24.6)	3,707 (21.7)
≥18,000	1,117 (6.2)	47 (6.0)	1,070 (6.2)
Unknown	1,867 (10.4)	148 (18.9)	1,719 (10.0)
Chest radiotherapy fields and doses <sup>g</sup>			
No chest radiotherapy	13,004 (72.6)	250 (32.0)	12,754 (74.5)
High-dose mantle (≥36 Gy; median: 40 Gy, IQR: 39–44 Gy) <sup>h</sup>	698 (3.9)	238 (30.4)	460 (2.7)
Low-dose mantle (<36 Gy; median: 26 Gy, IQR: 21–30 Gy) <sup>h</sup>	524 (2.9)	93 (11.9)	431 (2.5)
Mediastinal (median: 26 Gy, IQR: 21–36 Gy) <sup>h</sup>	469 (2.6)	33 (4.2)	436 (2.5)

**Table 1 (continued) | Demographic and treatment characteristics of 17,903 female 5-year childhood cancer survivors (primary cancer diagnosis year 1946–2012) overall and by subsequent breast cancer status**

Characteristic	Total ( <i>n</i> =17,903)	Subsequent breast cancer <sup>a</sup> ( <i>n</i> =782)	No subsequent breast cancer ( <i>n</i> =17,121)
	No. (%)	No. (%)	No. (%)
TBI (median: 12 Gy, IQR: 11–13 Gy) <sup>h</sup>	371 (2.1)	22 (2.8)	349 (2.0)
Whole lung (median: 16 Gy, IQR: 12–23 Gy) <sup>h</sup>	184 (1.0)	23 (2.9)	161 (0.9)
Other (median: 28 Gy, IQR: 21–36 Gy) <sup>h</sup>	1,316 (7.4)	63 (8.1)	1,253 (7.3)
Unknown	1,337 (7.5)	60 (7.7)	1,277 (7.5)
Pelvic radiotherapy dose <sup>i</sup>			
No pelvic radiotherapy	13,727 (76.7)	505 (64.6)	13,222 (77.2)
<10 Gy	142 (0.8)	6 (0.8)	136 (0.8)
10–19 Gy	594 (3.3)	24 (3.1)	570 (3.3)
20–29 Gy	719 (4.0)	38 (4.9)	681 (4.0)
30–39 Gy	767 (4.3)	82 (10.5)	685 (4.0)
≥40 Gy	713 (4.0)	72 (9.2)	641 (3.7)
Unknown	1,241 (6.9)	55 (7.0)	1,186 (6.9)
Age at diagnosis of primary cancer (years)			
<5	7,376 (41.2)	66 (8.4)	7,310 (42.7)
5–9	3,788 (21.2)	65 (8.3)	3,723 (21.7)
10–14	3,930 (22.0)	273 (34.9)	3,657 (21.4)
15–21	2,809 (15.7)	378 (48.3)	2,431 (14.2)
Treatment subgroups <sup>j</sup>			
Anthracycline <sup>k</sup> and chest radiotherapy	1,634 (9.1)	163 (20.8)	1,471 (8.6)
Anthracycline and no chest radiotherapy	5,714 (31.9)	156 (19.9)	5,558 (32.5)
No anthracycline and chest radiotherapy	1,962 (11.0)	294 (37.6)	1,668 (9.7)
No anthracycline and no chest radiotherapy	7,096 (39.6)	83 (10.6)	7,013 (41.0)
Unknown	1,497 (8.4)	86 (11.0)	1,411 (8.2)

<sup>a</sup>Included both invasive and ductal carcinoma in situ breast cancer. <sup>b</sup>Because of the eligibility criteria of the cohort, the composition of primary cancer diagnosis groups in our pooled data may differ from the composition in underlying populations of childhood cancer survivors. <sup>c</sup>Included the ICCC-3 classification groups 'hepatic tumor' (0 case/61 survivors), 'other and unspecified' (1 case/38 survivors), and 'unclassified' (1 case/30 survivors). <sup>d</sup>The unknown category under the variable 'doxorubicin dose' included both survivor groups with any doxorubicin (yes/no) unknown (56 cases/941 survivors) and with doxorubicin treatment but dose information unknown (21 cases/268 survivors). <sup>e</sup>The unknown category under the variable 'daunorubicin dose' included both survivor groups with any daunorubicin (yes/no) unknown (56 cases/953 survivors) and with daunorubicin treatment but dose information unknown (2 cases/99 survivors). <sup>f</sup>CED calculation: CED (mg m<sup>-2</sup>)=1.0 (cumulative cyclophosphamide dose (mg m<sup>-2</sup>))+0.244 (cumulative ifosfamide dose (mg m<sup>-2</sup>))+0.857 (cumulative procarbazine dose (mg m<sup>-2</sup>))+14.286 (cumulative chlorambucil dose (mg m<sup>-2</sup>))+15.0 (cumulative BCNU (carbamustine) dose (mg m<sup>-2</sup>))+16.0 (cumulative CCNU (lomustine) dose (mg m<sup>-2</sup>))+40 (cumulative melphalan dose (mg m<sup>-2</sup>))+50 (cumulative Thio-TEPA (thiotepa) dose (mg m<sup>-2</sup>))+100 (cumulative nitrogen mustard dose (mg m<sup>-2</sup>))+8.823 (cumulative busulfan dose (mg m<sup>-2</sup>)). <sup>g</sup>Included radiotherapy fields exposing (parts of) the chest. Radiation dose referred to the cumulative prescribed dose (including boost doses, if applicable), or slight variations, depending on definitions in the underlying cohorts<sup>25</sup>. Chest radiotherapy was categorized as the combination of chest radiation fields with the associated maximum chest radiotherapy dose below or above the median. The variable was classified as follows: high-dose mantle (median: 40 Gy, IQR: 39–44 Gy), low-dose mantle (median: 26 Gy, IQR: 21–30 Gy), mediastinal (median: 26 Gy, IQR: 21–36 Gy), TBI (median: 12 Gy, IQR: 11–13 Gy), whole lung (median: 16 Gy, IQR: 12–23 Gy), other (median: 28 Gy, IQR: 21–36 Gy) and unknown. <sup>h</sup>Dose represents the maximum cumulative prescribed chest dose (including boost doses, if applicable) of survivors classified in this group. This could include doses to chest field other than this category. <sup>i</sup>Included radiotherapy fields exposing (parts of) the pelvis (including TBI). Radiation dose referred to the cumulative prescribed dose (including boost doses, if applicable), or slight variations, depending on definitions in the underlying cohorts<sup>25</sup>. The unknown category under the variable 'pelvic radiotherapy dose' included both survivor groups with any pelvic radiotherapy (yes/no) unknown (54 cases/1,212 survivors) and with pelvic radiotherapy treatment but dose information unknown (1 case/29 survivors). <sup>j</sup>Treatment subgroup variable set to unknown if either of the treatment categories was unknown. <sup>k</sup>Anthracyclines included doxorubicin, daunorubicin, epirubicin and idarubicin.

unclear whether they received anthracycline treatment and/or chest radiotherapy treatment.

Among survivors with a cumulative doxorubicin dose of ≥200 mg m<sup>-2</sup>, the most common childhood cancer types were bone tumors, Hodgkin lymphoma and soft tissue sarcomas (Extended Data Table 1). The highest percentage of survivors who received a cumulative doxorubicin dose of ≥200 mg m<sup>-2</sup> was observed in the Dutch Hodgkin Late Effects cohort (20.8%), followed by the CCSS (16.9%) and the FCCSS (16.0%). Although the percentage of survivors who received any doxorubicin treatment was higher in the diagnosis period ≥1990 (39.3%) compared to the diagnosis periods 1980–1989 (33.0%) and <1980 (20.2%), the percentage of survivors who received ≥200 mg m<sup>-2</sup> cumulative doxorubicin dose was fairly similar across diagnosis period ≥1990 (14.3%), diagnosis period 1980–1989 (18.6%) and diagnosis

period <1980 (14.2%). The median follow-up time after primary cancer diagnosis was 24.9 years (IQR: 19.1–33.2). In total, 782 survivors developed the first SBC at a median age of 39.7 years (IQR: 34.3–44.9), including 616 invasive breast cancer and 166 ductal carcinoma in situ (DCIS) cases. The median attained age at the end of follow-up was 33.7 years (IQR: 25.9–41.6) and 29.6% of survivors attained an age of 40 years or more.

### Comparison with the general population

In Extended Data Table 2, breast cancer risk by doxorubicin and chest radiotherapy treatment is provided. Compared with the general female population, the risk of invasive breast cancer was most elevated in the survivor group that received a cumulative doxorubicin dose ≥200 mg m<sup>-2</sup> and chest radiotherapy (standardized incidence ratio



(SIR): 17.5, 95% confidence interval (CI): 13.3–22.6; median attained age, 36.1 years), followed by the cumulative doxorubicin dose <200 mg m<sup>-2</sup> and chest radiotherapy group (SIR: 13.9, 95% CI: 9.7–19.2; median attained age, 33.8 years), then by the chest radiotherapy-only with no doxorubicin group (SIR: 10.7, 95% CI: 9.4–12.1; median attained age, 38.4 years), then by the cumulative doxorubicin dose ≥200 mg m<sup>-2</sup> with no chest radiotherapy group (SIR: 5.6, 95% CI: 4.5–6.9; median attained age, 36.5 years), then by the cumulative doxorubicin dose <200 mg m<sup>-2</sup> with no chest radiotherapy group (SIR: 3.2, 95% CI: 1.9–5.1; median attained age, 28.9 years) and finally by the group receiving neither doxorubicin nor chest radiotherapy (SIR: 1.7, 95% CI: 1.4–2.1; median attained age, 32.8 years). The highest excess absolute risk (EAR) was observed in the cumulative doxorubicin dose ≥200 mg m<sup>-2</sup> and chest radiotherapy group with 5.0 excess cases per 1,000 person-years.

### Risk factors for SBC

In multivariable Cox regression analyses, cumulative doxorubicin dose was associated with an increased risk of SBC, with a hazard ratio (HR) of 1.76 (95% CI: 0.88–3.51) for <100 mg m<sup>-2</sup>, HR of 1.77 (95% CI: 1.30–2.42) for 100–199 mg m<sup>-2</sup>, HR of 2.50 (95% CI: 1.85–3.40) for 200–299 mg m<sup>-2</sup>, HR of 2.33 (95% CI: 1.68–3.23) for 300–399 mg m<sup>-2</sup> and HR of 2.78 (95% CI: 1.99–3.88) for ≥400 mg m<sup>-2</sup> cumulative doxorubicin dose category compared to the no doxorubicin treatment (Table 2 Model I; survivor characteristics by cumulative doxorubicin dose categories are shown in Extended Data Table 1). Compared to those not treated with daunorubicin, HRs were close to one for those with cumulative doses of daunorubicin <200 mg m<sup>-2</sup> (HR: 0.98, 95% CI: 0.46–2.09 for <100 mg m<sup>-2</sup> and HR: 0.98, 95% CI: 0.55–1.75 for 100–199 mg m<sup>-2</sup>), and the highest cumulative dose group, ≥200 mg m<sup>-2</sup>, conferred a nonstatistically significant association (HR: 1.22, 95% CI: 0.69–2.17). When the continuous cumulative doxorubicin and daunorubicin dose information was included in the model, the risk of developing SBC in survivors treated with doxorubicin increased 1.24-fold (HR per 100 mg m<sup>-2</sup> 1.24, 95% CI: 1.18–1.31) for every 100 mg m<sup>-2</sup> increase in cumulative doxorubicin dose after adjustments (Table 2, model II). Cumulative daunorubicin dose and risk of SBC were not statistically significant (HR per 100 mg m<sup>-2</sup> 1.10, 95% CI: 0.95–1.29). Epirubicin treatment was associated with an increased SBC risk (yes versus no, HR: 3.25, 95% CI: 1.59–6.63).

Additionally, all chest radiotherapy field and dose categories were significantly associated with increased SBC risk, with the highest HRs for those treated with high-dose mantle field (HR: 8.99, 95% CI: 7.00–11.53), followed by whole lung irradiation (HR: 7.58, 95% CI: 4.68–12.27), and total body irradiation (TBI; HR: 7.05, 95% CI: 4.11–12.10; Table 2, model I). Survivors with a primary cancer diagnosis at ages 10–14 or 15–21 years had an elevated risk of SBC with HRs of 2.03 (95% CI: 1.48–2.79) for 10–14 years and 1.83 (95% CI: 1.31–2.55) for 15–21 years compared with the survivors who were diagnosed at ages 0–4. We did not observe significant effects of pelvic radiotherapy or alkylating agents (cyclophosphamide equivalent dose (CED)) on SBC risk. HR per 100 mg m<sup>-2</sup> of cumulative doxorubicin dose was 1.11 (95% CI: 1.02–1.21) for survivors who received chest radiotherapy and 1.26 (95% CI: 1.17–1.36) for survivors who did not receive chest radiotherapy (Table 3).

Joint effects of continuous cumulative doxorubicin dose and chest radiation (yes versus no) were submultiplicative (HR<sub>multiplicative interaction</sub>: 0.86, 95% CI: 0.78–0.96,  $P_{\text{multiplicative interaction}} = 0.006$ ) and compatible with additive effects ( $P_{\text{additive interaction}} = 0.99$ ; Extended Data Table 3). The effect of cumulative doxorubicin dose on SBC risk was significantly less strong among those with high-dose mantle field (HR<sub>multiplicative interaction</sub>: 0.84, 95% CI: 0.71–0.98,  $P_{\text{multiplicative interaction}} = 0.03$ ) and mediastinal field irradiation (HR<sub>multiplicative interaction</sub>: 0.65, 95% CI: 0.45–0.96,  $P_{\text{multiplicative interaction}} = 0.03$ ), compared to those treated without chest radiotherapy. On an additive scale, the joint effects of cumulative doxorubicin dose and chest radiotherapy fields were equal to the sum of these two individual effects (all  $P_{\text{additive interaction}} > 0.05$ ). Joint effects of daunorubicin and chest radiation were on a multiplicative scale ( $P_{\text{multiplicative interaction}} = 0.10$ )

and significantly less than additive (no. of additional cases per 10,000 person-years: −9.67,  $P_{\text{additive interaction}} = 0.002$ ).

Age at childhood cancer diagnosis did not significantly modify the effects of cumulative doxorubicin and daunorubicin dose on SBC risk on a multiplicative scale ( $P_{\text{multiplicative interaction}} = 0.09$  and  $P_{\text{multiplicative interaction}} = 0.30$ , respectively). However, on an additive scale, the joint effects of cumulative doxorubicin dose and age at childhood cancer diagnosis (5–9; 10–14; 15–21 versus 0–4 years) were all significantly greater than the sum of the individual effects (all  $P_{\text{additive interaction}} < 0.05$ ). Such an effect was not found for cumulative daunorubicin dose.

To rule out potential effects of other treatments that have been associated with SBC, such as chest radiotherapy and alkylating agents, we performed separate analyses in survivors who received neither chest radiotherapy nor alkylating agents; the effects of high cumulative doxorubicin dose on SBC risk remained statistically significant, with HR of 2.67 (95% CI: 1.08–6.59) for 300–399 mg m<sup>-2</sup> and HR of 3.58 (95% CI: 1.66–7.71) for ≥400 mg m<sup>-2</sup> cumulative doxorubicin dose category (Table 4).

### Cumulative incidences

For survivors who did not receive chest radiotherapy, cumulative incidences at the age of 40 years were 0.8% for no doxorubicin treatment group, 1.9% for <200 mg m<sup>-2</sup> cumulative doxorubicin dose group and 3.4% for ≥200 mg m<sup>-2</sup> cumulative doxorubicin dose group; for survivors who received chest radiotherapy, corresponding cumulative incidences at age 40 for the three cumulative dose groups were 7.9% for no doxorubicin treatment group, 10.1% for <200 mg m<sup>-2</sup> cumulative doxorubicin dose group and 8.1% for ≥200 mg m<sup>-2</sup> cumulative doxorubicin dose group (Fig. 2a), with some variation by chest radiation field (Fig. 2b–e). In Extended Data Table 4, multivariable Cox regression results for these cumulative doxorubicin dose categories are presented.

### Sensitivity analyses

Sensitivity analyses including (a) only invasive breast cancer as an outcome, (b) censoring at the time of first non-SBC subsequent malignant tumor, (c) excluding females treated before 1970, (d) excluding patients with Hodgkin lymphoma (all in Extended Data Table 5) and (e) excluding each cohort on a one-by-one basis (Supplementary Table 4) yielded similar results. The results of the models conducted in each cohort are shown in Supplementary Table 5.

### Discussion

Previous studies based on single cohorts reported that anthracycline exposure may increase the risk of SBC, but had relatively smaller sample sizes and case numbers<sup>7,11–15</sup>. We are able to estimate precise dose thresholds for doxorubicin and identify the effects of other types of anthracyclines on SBC risk in a pooled cohort analysis of large numbers of childhood cancer survivors. These pooled analyses demonstrate a relationship between increasing cumulative doxorubicin dose and SBC risk, as well as an association between epirubicin exposure (yes versus no) and an increased SBC risk. We observed that treatment with doxorubicin increases SBC risk both in survivors who received chest radiotherapy and in survivors treated without chest radiotherapy. Furthermore, the joint effects between doxorubicin and chest radiotherapy appear to be additive. In addition, our results did not show a statistically significant association between daunorubicin and increased SBC risk.

The mechanisms underpinning anthracycline-related SBC risk have not been elucidated. Known mutagenic properties of anthracycline agents that might contribute to SBC risk include topoisomerase II inhibition, DNA intercalation, oxidative stress and chromatin damage<sup>17</sup>. In regard to our identification of differential risk between different anthracycline agents, potential differences in the mechanisms of developing subsequent neoplasms are unclear. Animal studies indicate that both doxorubicin and daunorubicin can induce mammary tumors<sup>18,19</sup>. The antineoplastic properties of doxorubicin and

**Table 2 | Multivariable Cox proportional hazard regression analyses for subsequent breast cancer in female 5-year childhood cancer survivors (primary cancer diagnosis year 1946–2012)**

Characteristic	Total (n)	%	No. of SBC (n) <sup>c</sup>	%	Model I <sup>a</sup>		Model II <sup>b</sup>	
					HR	95% CI	HR	95% CI
Cumulative doxorubicin dose (mg m <sup>-2</sup> )								
0	11,170	62.4	431	55.1	1.0	Ref.	–	
<100	912	5.1	16	2.0	1.76	0.88–3.51		
100–199	1,795	10.0	69	8.8	1.77	1.30–2.42		
200–299	1,026	5.7	67	8.6	2.50	1.85–3.40		
300–399	1,012	5.7	64	8.2	2.33	1.68–3.23		
≥400	779	4.4	58	7.4	2.78	1.99–3.88		
Unknown	1,209	6.8	77	9.8	–	–		
Continuous variable: cumulative doxorubicin dose (per 100 mg m <sup>-2</sup> )	–	–	–	–	–	–	1.24	1.18–1.31
Cumulative daunorubicin dose (mg m <sup>-2</sup> )								
0	14,630	81.7	684	87.5	1.0	Ref.	–	
<100	623	3.5	7	0.9	0.98	0.46–2.09		
100–199	953	5.3	16	2.0	0.98	0.55–1.75		
≥200	645	3.6	17	2.2	1.22	0.69–2.17		
Unknown	1,052	5.9	58	7.4	–	–		
Continuous variable: cumulative daunorubicin dose (per 100 mg m <sup>-2</sup> )	–	–	–	–	–	–	1.10	0.95–1.29
Epirubicin								
No	16,637	92.9	717	91.7	1.0	Ref.	1.0	Ref.
Yes	325	1.8	9	1.2	3.40	1.66–6.98	3.25	1.59–6.63
Unknown	941	5.3	56	7.2	–	–	–	–
Chest radiotherapy field and dose								
No chest radiotherapy	13,004	72.6	250	32.0	1.0	Ref.	1.0	Ref.
High-dose mantle (≥36 Gy; median: 40 Gy, IQR: 39–44 Gy)	698	3.9	238	30.4	8.99	7.00–11.53	9.12	7.09–11.75
Low-dose mantle (<36 Gy; median: 26 Gy, IQR: 21–30 Gy)	524	2.9	93	11.9	4.72	3.48–6.41	5.23	3.86–7.09
Mediastinal (median: 26 Gy, IQR: 21–36 Gy)	469	2.6	33	4.2	1.65	1.02–2.67	1.71	1.06–2.78
TBI (median: 12 Gy, IQR: 11–13 Gy)	371	2.1	22	2.8	7.05	4.11–12.10	7.18	4.18–12.33
Whole lung (median: 16 Gy, IQR: 12–23 Gy)	184	1.0	23	2.9	7.58	4.68–12.27	8.00	4.94–12.95
Other (median: 28 Gy, IQR: 21–36 Gy)	1,316	7.4	63	8.1	2.61	1.87–3.64	2.68	1.91–3.75
Unknown	1,337	7.5	60	7.7	–	–	–	–
Pelvic radiotherapy ≥5 Gy								
No	13,751	76.8	505	64.6	1.0	Ref.	1.0	Ref.
Yes	2,911	16.3	222	28.4	0.95	0.78–1.17	0.94	0.77–1.16
Unknown	1,241	6.9	55	7.0	–	–	–	–
Age at primary childhood cancer diagnosis (year)								
<5	7,376	41.2	66	8.4	1.0	Ref.	1.0	Ref.
5–9	3,788	21.2	65	8.3	1.13	0.76–1.69	1.12	0.75–1.67
10–14	3,930	22.0	273	34.9	2.03	1.48–2.79	2.04	1.49–2.81
15–21	2,809	15.7	378	48.3	1.83	1.31–2.55	1.84	1.32–2.57
CED <sup>d</sup> (mg m <sup>-2</sup> )								
None	7,951	44.4	301	38.5	1.0	Ref.	1.0	Ref.
<6,000	3,069	17.1	94	12.0	0.87	0.67–1.14	0.95	0.73–1.25
6,000–17,999	3,899	21.8	192	24.6	1.02	0.82–1.27	1.07	0.86–1.32
≥18,000	1,117	6.2	47	6.0	1.20	0.83–1.74	1.23	0.85–1.77
Unknown	1,867	10.4	148	18.9	–	–	–	–

<sup>a</sup>Model I included categorical variables of cumulative doxorubicin and daunorubicin dose by steps of 100 mg m<sup>-2</sup>. <sup>b</sup>Model II included continuous variables of cumulative doxorubicin and daunorubicin dose per 100 mg m<sup>-2</sup>. <sup>c</sup>One survivor had SBC before 5 years after primary cancer. <sup>d</sup>CED calculation: CED (mg m<sup>-2</sup>) = 1.0 (cumulative cyclophosphamide dose (mg m<sup>-2</sup>)) + 0.244 (cumulative ifosfamide dose (mg m<sup>-2</sup>)) + 0.857 (cumulative procarbazine dose (mg m<sup>-2</sup>)) + 14.286 (cumulative chlorambucil dose (mg m<sup>-2</sup>)) + 15.0 (cumulative BCNU (carmustine) dose (mg m<sup>-2</sup>)) + 16.0 (cumulative CCNU (lomustine) dose (mg m<sup>-2</sup>)) + 40 (cumulative melphalan dose (mg m<sup>-2</sup>)) + 50 (cumulative Thio-TEPA (thiotepa) dose (mg m<sup>-2</sup>)) + 100 (cumulative nitrogen mustard dose (mg m<sup>-2</sup>)) + 8.823 (cumulative busulfan dose (mg m<sup>-2</sup>)).

**Table 3 | Multivariable Cox proportional hazard regression analyses for subsequent breast cancer by chest radiotherapy status among female 5-year childhood cancer survivors (primary cancer diagnosis year 1946–2012)**

Models without interaction				
Characteristic	With chest radiotherapy <sup>a</sup>		Without chest radiotherapy <sup>a</sup>	
	HR	95% CI	HR	95% CI
Continuous variable: cumulative doxorubicin dose (per 100 mg m <sup>-2</sup> )	1.11	1.02–1.21	1.26	1.17–1.36
Continuous variable: cumulative daunorubicin dose (per 100 mg m <sup>-2</sup> )	0.95	0.74–1.21	1.12	0.93–1.36
Epirubicin				
No	1.0	Ref.	1.0	Ref.
Yes	2.28	1.00–5.21	2.13	0.49–9.17
Models with a multiplicative interaction				
–	Interaction: cumulative doxorubicin dose × chest radiotherapy status (yes/no)		Interaction: cumulative daunorubicin dose × chest radiotherapy status (yes/no)	
	HR	95% CI	HR	95% CI
Continuous variable: Cumulative doxorubicin dose (per 100 mg m <sup>-2</sup> )	1.28	1.21–1.37	1.21	1.15–1.28
Continuous variable: cumulative daunorubicin dose (per 100 mg m <sup>-2</sup> )	1.04	0.89–1.23	1.15	0.96–1.37
Epirubicin				
No	1.0	Ref.	1.0	Ref.
Yes	2.54	1.22–5.30	2.47	1.17–5.23
Interaction: cumulative doxorubicin dose (per 100 mg m <sup>-2</sup> ) × chest radiotherapy status (yes/no)	0.86	0.78–0.96	–	–
Interaction: cumulative daunorubicin dose (per 100 mg m <sup>-2</sup> ) × chest radiotherapy status (yes/no)	–	–	0.77	0.57–1.05

<sup>a</sup>Models were further adjusted for pelvic radiotherapy ≥5 Gy (yes/no), age at primary childhood cancer diagnosis (categorical variable), and cyclophosphamide equivalent dose (categorical variable).

daunorubicin have both been assumed to result from DNA damage and chromatin damage<sup>17</sup>, and based on limited studies, the anticancer efficacies are thought to be similar<sup>20,21</sup>. Evidence from murine models and human cells suggests that chemically separating those activities by reducing the DNA damage effect while retaining chromatin damage could detoxify the anthracycline variants while maintaining anticancer efficacy<sup>22</sup>. A possible factor that might underlie the differences in dose effects observed between doxorubicin and daunorubicin is the lower number of individuals and SBC cases among those exposed to daunorubicin, which might have limited power to detect a substantial dose–response relationship. For epirubicin (nine SBC cases exposed), we identified an association with SBC increased risk, but for idarubicin (one SBC case exposed), the number of cases was too low. Future experimental and animal studies that elucidate mechanisms underlying breast carcinogenicity among the various anthracycline agents are warranted.

Childhood cancer treatments often feature multimodality regimens<sup>23</sup>, which challenge the elucidation of joint and independent

**Table 4 | Multivariable Cox proportional hazard regression analyses for subsequent breast cancer in female 5-year childhood cancer survivors whose treatment history did not include chest radiotherapy nor alkylating agent chemotherapy (primary cancer diagnosis year 1946–2012)<sup>a</sup>**

	Total (n)	%	No. of SBC (n)	%	HR <sup>b</sup>	95% CI
Cumulative doxorubicin dose (mg m <sup>-2</sup> )						
0	5,880	90.5	61	71.8	1.0	Ref.
<300 <sup>c</sup>	305	4.7	7	8.2	2.35	0.96–5.71
300–399	131	2.0	5	5.9	2.67	1.08–6.59
≥400	136	2.1	8	9.4	3.58	1.66–7.71
Unknown	47	0.7	4	4.7	–	–
Daunorubicin						
No	6,020	92.6	81	95.3	1.0	Ref.
Yes	479	7.4	4	4.7	1.43	0.48–4.24
Epirubicin						
No	6,362	97.9	84	98.8	1.0	Ref.
Yes	137	2.1	1	1.2	3.46	0.41–29.10

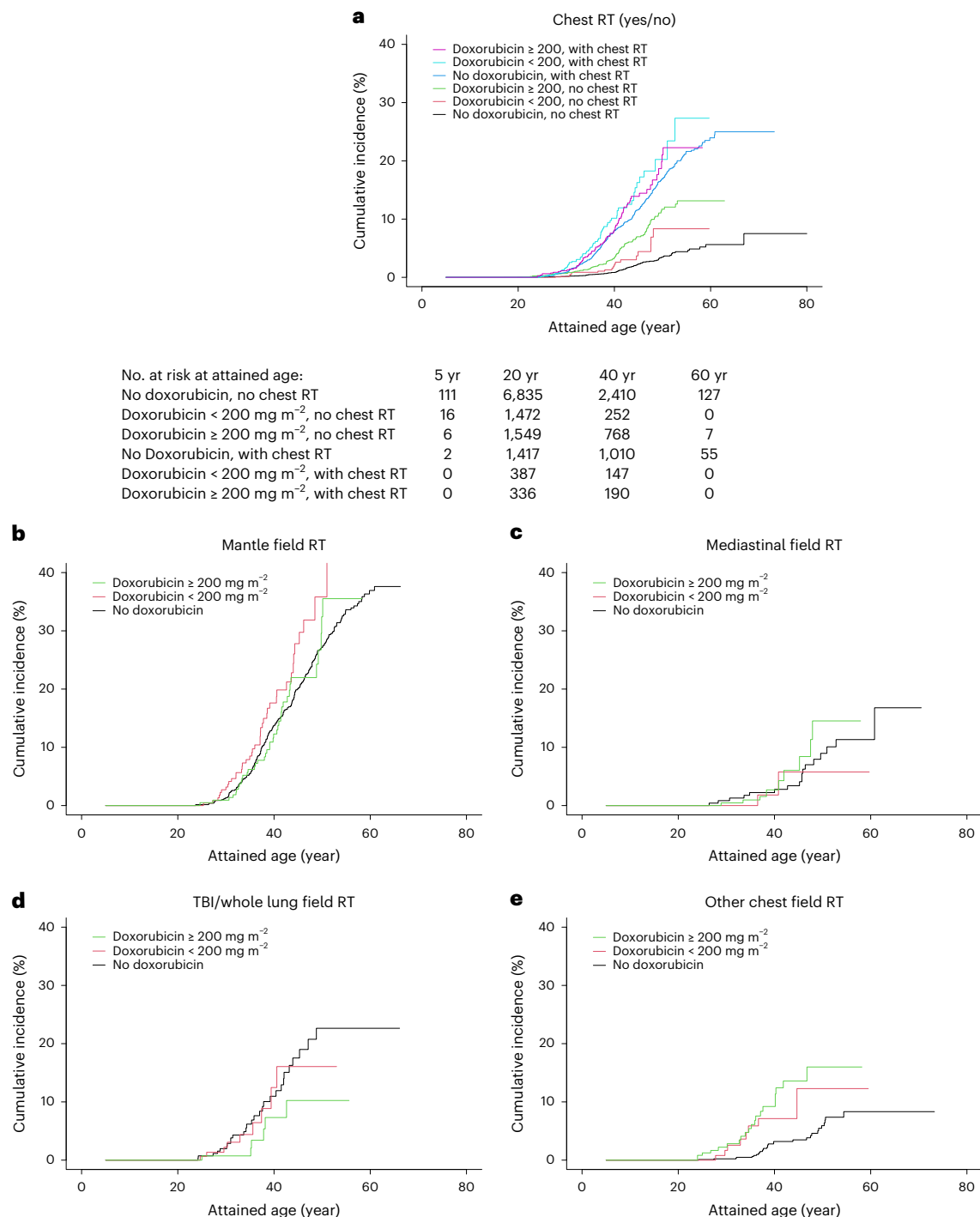
<sup>a</sup>In total, 6,499 female 5-year survivors did not receive chest radiotherapy nor alkylating agent chemotherapy, among whom 85 developed SBC during follow-up. <sup>b</sup>Models were further adjusted for pelvic radiotherapy ≥5 Gy (yes/no) and age at primary childhood cancer diagnosis (categorical variable). <sup>c</sup>The cumulative doxorubicin dose (mg m<sup>-2</sup>) categories <100 (0 case/46 survivors), 100–199 (1 case/129 survivors) and 200–299 (6 cases/130 survivors) were collapsed due to low numbers of SBC cases.

effects of different treatments. Our study provides evidence of the joint effects of chest radiotherapy and individual anthracycline agents. Our findings indicate that the joint effects of doxorubicin and chest radiation are submultiplicative and compatible with additive effects, which implies that the combined effects of doxorubicin and chest radiation are not equal to the product of their individual effects, but to the sum of their individual effects. A previous CCSS case–control study showed that the joint effects of radiotherapy dose to the breast and anthracycline exposure (yes/no) were more than additive<sup>14</sup>. However, they did not investigate the interaction between individual anthracycline agents and chest radiotherapy, and further comparison between the studies is difficult because the CCSS study used a case–control design with estimated radiation dose to breast cancer location.

We did not observe a statistically significant reduction of SBC risk among survivors with radiotherapy delivered to the pelvic region (≥ 5 Gy versus no pelvic radiotherapy or <5 Gy, as an indicator of ovarian dose) in our entire cohort (Table 2), which aligns with a SJLIFE study (pelvic radiotherapy yes versus no) that was also included in our pooled cohort<sup>13</sup>. However, when we restricted our analyses to survivors who received chest radiotherapy (Extended Data Table 6), we found a decreased SBC risk for pelvic radiotherapy, consistent with previous reports that showed reduced SBC risk associated with absorbed ovarian radiation dose ≥5 Gy in survivors treated with chest radiation, likely due to suppression of hormonal stimulation of breast tissue<sup>16</sup>.

Some limitations should be taken into account when interpreting our study findings. For SIR/EAR and cumulative incidence analyses, one should be cautious with interpreting differences between categories, as there might be differences in the duration of follow-up and pelvic radiotherapy exposure between the categories. As we did not have complete data on treatments for subsequent malignant tumors before SBC (66 survivors had subsequent malignant tumors before SBC diagnosis), we were not able to explore the effects of those treatments on SBC risk. However, our sensitivity analyses censoring at the time of the first subsequent malignant tumor (Extended Data Table 5b) were consistent with the results in our main analyses. Our results of a 1.7-time





**Fig. 2 | Cumulative incidence of subsequent breast cancer in female 5-year childhood cancer survivors by cumulative doxorubicin dose, stratified by chest radiotherapy status (primary cancer diagnosis year 1946–2012).** Stratification by **a**, chest radiotherapy status; **b**, Mantle field; **c**, Mediastinal field; **d**, TBI/whole lung field; **e**, Other chest field. The SCCSS was excluded from

cumulative incidence analyses due to the case-cohort design. The cumulative incidence figures represent univariable comparisons. Multivariable Cox regression results for the cumulative doxorubicin dose categories presented in this figure are shown in Extended Data Table 4. No., number; RT, radiotherapy.

increased risk of SBC compared to the general female population for survivors who received neither chest radiotherapy nor doxorubicin (Extended Data Table 2) suggest that other factors, such as genetic predisposition, may also have a role. As we had incomplete information on genetic cancer predispositions in our study, we were not able to evaluate genetic effects and possible gene-treatment interactions. The SJLIFE study, however, demonstrated that anthracycline effects are

independent of cancer predisposition gene mutations<sup>13</sup>. Future studies with germline genetic sequencing data may help to further elucidate the interplay of genetic modifiers and individual chemotherapeutic agent exposure on SBC risk. Furthermore, we did not have information on some other SBC risk factors, such as unhealthy lifestyle (for example, low-level physical activity, obesity and excessive alcohol use) and reproductive history, which could potentially lead to some

degree of confounding bias. Our analyses did not identify associations between gonadotoxic therapies (pelvic radiotherapy and alkylating agents as proxies for reproductive history) and SBC risk, making it unlikely that reproductive factors are strong confounders. Also, most lifestyle factors are not very likely to be associated with anthracycline exposure. This has also been described in a previous study showing that anthracyclines were not associated with being insufficiently active or having high-risk health behaviors<sup>24</sup>. Therefore, we assume that the risk of confounding caused by lifestyle factors is very low. However, it is important to evaluate this in future studies.

According to the current IGHG breast cancer screening guideline, survivors with a relative risk more than two times higher than survivors not exposed to a specific treatment are considered to be at moderate or high risk for SBC. Recommendations for SBC screening in survivors are based on these risk levels<sup>8</sup>. The current IGHG guideline was not able to formulate SBC screening recommendations for survivors treated with anthracyclines because there was inconsistent evidence on dose thresholds for classifying survivors as moderate or high risk and no data on possible dose–effect differences in risks for the different individual anthracycline agents. In our study, we observed a more than two times higher risk of SBC for survivors treated with  $\geq 200$  mg m<sup>-2</sup> cumulative doxorubicin dose compared to the no doxorubicin treatment. Given that trends in childhood cancer treatments include reduced use of chest radiation therapy doses and increased exposure to anthracyclines since the 1970s<sup>7</sup>, our findings support that early initiation of breast cancer surveillance may be reasonable for childhood cancer survivors who have received  $\geq 200$  mg m<sup>-2</sup> cumulative doxorubicin dose. We believe that these findings should be implemented in an update of the SBC surveillance guideline for survivors. Our study also provided insufficient information on the dose–response relation of epirubicin on SBC risk to advise on screening recommendations for this anthracycline agent.

In conclusion, doxorubicin is associated with a dose-dependent increase of SBC, both in women treated with and without chest radiotherapy. Epirubicin is also associated with an increased SBC risk. Our findings support that it may be reasonable to initiate early breast cancer screening in female childhood cancer survivors who have received  $\geq 200$  mg m<sup>-2</sup> cumulative doxorubicin dose. We believe that the results of our study should be considered in updates of the SBC surveillance guidelines for survivors and can inform future treatment protocols for newly diagnosed childhood cancer patients.

## Online content

Any methods, additional references, Nature Portfolio reporting summaries, source data, extended data, supplementary information, acknowledgements, peer review information; details of author contributions and competing interests; and statements of data and code availability are available at <https://doi.org/10.1038/s41591-023-02514-1>.

## References

- Meadows, A. T. et al. Second neoplasms in survivors of childhood cancer: findings from the childhood cancer survivor study cohort. *J. Clin. Oncol.* **27**, 2356–2362 (2009).
- Reulen, R. C. et al. Long-term cause-specific mortality among survivors of childhood cancer. *JAMA* **304**, 172–179 (2010).
- Armstrong, G. T. et al. Reduction in late mortality among 5-year survivors of childhood cancer. *N. Engl. J. Med.* **374**, 833–842 (2016).
- Yeh, J. M. et al. Life expectancy of adult survivors of childhood cancer over 3 decades. *JAMA Oncol.* **6**, 350–357 (2020).
- Bhatia, S. et al. Breast cancer and other second neoplasms after childhood Hodgkin's disease. *N. Engl. J. Med.* **334**, 745–751 (1996).
- Moskowitz, C. S. et al. Breast cancer after chest radiation therapy for childhood cancer. *J. Clin. Oncol.* **32**, 2217–2223 (2014).
- Henderson, T. O. et al. Association of changes in cancer therapy over 3 decades with risk of subsequent breast cancer among female childhood cancer survivors: a report from the childhood cancer survivor study (CCSS). *JAMA Oncol.* **8**, 1765–1774 (2022).
- Mulder, R. L. et al. Updated breast cancer surveillance recommendations for female survivors of childhood, adolescent, and young adult cancer from the international guideline harmonization group. *J. Clin. Oncol.* **38**, 4194–4207 (2020).
- Ren, W., Chen, M., Qiao, Y. & Zhao, F. Global guidelines for breast cancer screening: a systematic review. *Breast* **64**, 85–99 (2022).
- Turcotte, L. M. et al. Temporal trends in treatment and subsequent neoplasm risk among 5-year survivors of childhood cancer, 1970–2015. *JAMA* **317**, 814–824 (2017).
- Henderson, T. O. et al. Breast cancer risk in childhood cancer survivors without a history of chest radiotherapy: a report from the childhood cancer survivor study. *J. Clin. Oncol.* **34**, 910–918 (2016).
- Teepen, J. C. et al. Long-term risk of subsequent malignant neoplasms after treatment of childhood cancer in the DCOG LATER study cohort: role of chemotherapy. *J. Clin. Oncol.* **35**, 2288–2298 (2017).
- Ehrhardt, M. J. et al. Subsequent breast cancer in female childhood cancer survivors in the St Jude Lifetime Cohort Study (SJLIFE). *J. Clin. Oncol.* **37**, 1647–1656 (2019).
- Veiga, L. H. et al. Association of breast cancer risk after childhood cancer with radiation dose to the breast and anthracycline use: a report from the childhood cancer survivor study. *JAMA Pediatr.* **173**, 1171–1179 (2019).
- Turcotte, L. M. et al. Chemotherapy and risk of subsequent malignant neoplasms in the childhood cancer survivor study cohort. *J. Clin. Oncol.* **37**, 3310–3319 (2019).
- Inskip, P. D. et al. Radiation dose and breast cancer risk in the childhood cancer survivor study. *J. Clin. Oncol.* **27**, 3901–3907 (2009).
- van der Zanden, S. Y., Qiao, X. & Neefjes, J. New insights into the activities and toxicities of the old anticancer drug doxorubicin. *FEBS J.* **288**, 6095–6111 (2021).
- Bucclarelli, E. Mammary tumor induction in male and female Sprague-Dawley rats by adriamycin and daunomycin. *J. Natl Cancer Inst.* **66**, 81–84 (1981).
- Solcia, E., Ballerini, L., Bellini, O., Sala, L. & Bertazzoli, C. Mammary tumors induced in rats by adriamycin and daunomycin. *Cancer Res.* **38**, 1444–1446 (1978).
- Buckley, J. D. et al. Remission induction in children with acute non-lymphocytic leukemia using cytosine arabinoside and doxorubicin or daunorubicin: a report from the Childrens Cancer Study Group. *Med. Pediatr. Oncol.* **17**, 382–390 (1989).
- Kaspers, G. L. et al. In vitro cytotoxicity of mitoxantrone, daunorubicin and doxorubicin in untreated childhood acute leukemia. *Leukemia* **8**, 24–29 (1994).
- Qiao, X. et al. Uncoupling DNA damage from chromatin damage to detoxify doxorubicin. *Proc. Natl Acad. Sci. USA* **117**, 15182–15192 (2020).
- Erdmann, F. et al. Childhood cancer: survival, treatment modalities, late effects and improvements over time. *Cancer Epidemiol.* **71**, 101733 (2021).
- Lown, E. A. et al. Patterns and predictors of clustered risky health behaviors among adult survivors of childhood cancer: a report from the childhood cancer survivor study. *Cancer* **122**, 2747–2756 (2016).
- Wang, Y. et al. Cohort profile: risk and risk factors for female breast cancer after treatment for childhood and adolescent cancer: an internationally pooled cohort. *BMJ Open* **12**, e065910 (2022).

**Publisher's note** Springer Nature remains neutral with regard to jurisdictional claims in published maps and institutional affiliations.

**Open Access** This article is licensed under a Creative Commons Attribution 4.0 International License, which permits use, sharing, adaptation, distribution and reproduction in any medium or format, as long as you give appropriate credit to the original author(s) and the source, provide a link to the Creative Commons license, and indicate if changes were made. The images or other third party material in this

article are included in the article's Creative Commons license, unless indicated otherwise in a credit line to the material. If material is not included in the article's Creative Commons license and your intended use is not permitted by statutory regulation or exceeds the permitted use, you will need to obtain permission directly from the copyright holder. To view a copy of this license, visit <http://creativecommons.org/licenses/by/4.0/>.

© The Author(s) 2023

<sup>1</sup>Princess Máxima Center for Pediatric Oncology, Utrecht, The Netherlands. <sup>2</sup>Department of Health Services Research, Carl von Ossietzky University of Oldenburg, Oldenburg, Germany. <sup>3</sup>Division of Childhood Cancer Epidemiology (EpiKiK), Institute of Medical Biostatistics, Epidemiology and Informatics (IMBEI), University Medical Center of the Johannes Gutenberg University Mainz, Mainz, Germany. <sup>4</sup>Netherlands Cancer Institute, Amsterdam, The Netherlands. <sup>5</sup>Memorial Sloan Kettering Cancer Center, New York City, NY, USA. <sup>6</sup>Fred Hutchinson Cancer Center, Seattle, WA, USA. <sup>7</sup>St. Jude Children's Research Hospital, Memphis, TN, USA. <sup>8</sup>Radiation Epidemiology Team, INSERM U1018, Gustave Roussy, Université Paris-Saclay, Villejuif, France. <sup>9</sup>Childhood Cancer Research Group, Institute of Social and Preventive Medicine, University of Bern, Bern, Switzerland. <sup>10</sup>Pediatric Hematology and Oncology, University Children's Hospital Bern, University of Bern, Bern, Switzerland. <sup>11</sup>Department of Pathology and Laboratory Medicine, Children's Hospital Colorado, Aurora, CO, USA. <sup>12</sup>Department of Pathology, University of Colorado Anschutz Medical Campus, Aurora, CO, USA. <sup>13</sup>Department of Pediatric Hematology and Oncology, University-Hospital of Angers, Angers, France. <sup>14</sup>Radiotherapy Department, Francois Baclesse Center, Caen, France. <sup>15</sup>University of Chicago Medicine Comer Children's Hospital, Chicago, IL, USA. <sup>16</sup>University of Texas M.D. Anderson Cancer Center, Houston, TX, USA. <sup>17</sup>University of Minnesota Masonic Cancer Center, Minneapolis, MN, USA. <sup>18</sup>Duke University Medical Center, Durham, NC, USA. <sup>19</sup>CANSEARCH research platform in pediatric oncology and hematology of the University of Geneva, Geneva, Switzerland. <sup>20</sup>University Medical Center Utrecht, Wilhelmina Children's Hospital, Utrecht, The Netherlands. \*A list of authors and their affiliations appears at the end of the paper.

✉ e-mail: [y.wang-2@prinsesmaximacentrum.nl](mailto:y.wang-2@prinsesmaximacentrum.nl)

## The International Consortium for Pooled Studies on Subsequent Malignancies after Childhood and Adolescent Cancer

Yuehan Wang<sup>1</sup>, Cécile M. Ronckers<sup>1,2,3</sup>, Flora E. van Leeuwen<sup>4</sup>, Chaya S. Moskowitz<sup>5</sup>, Wendy Leisenring<sup>6</sup>, Gregory T. Armstrong<sup>7</sup>, Florent de Vathaire<sup>8</sup>, Melissa M. Hudson<sup>7</sup>, Claudia E. Kuehni<sup>9,10</sup>, Michael A. Arnold<sup>11,12</sup>, Charlotte Demoor-Goldschmidt<sup>8,13,14</sup>, Daniel M. Green<sup>7</sup>, Tara O. Henderson<sup>15</sup>, Rebecca M. Howell<sup>16</sup>, Matthew J. Ehrhardt<sup>7</sup>, Joseph P. Neglia<sup>17</sup>, Kevin C. Oeffinger<sup>18</sup>, Helena J. H. van der Pal<sup>1</sup>, Leslie L. Robison<sup>7</sup>, Michael Schaapveld<sup>4</sup>, Lucie M. Turcotte<sup>17</sup>, Nicolas Waespe<sup>9,10,19</sup>, Nadia Haddy<sup>8</sup>, Ibrahima Diallo<sup>8</sup>, K. Scott Baker<sup>6</sup>, Amy Berrington de González<sup>21,22</sup>, Miriam R. Conces<sup>23,24</sup>, Louis S. Constine<sup>25</sup>, Mike Hawkins<sup>26</sup>, Jacqueline J. Loonen<sup>27</sup>, Marloes Louwerens<sup>28</sup>, Geert O. Janssens<sup>1,29</sup>, Lene Mellempkjaer<sup>30</sup>, Raoul Reulen<sup>26</sup>, Jeanette F. Winther<sup>31,32</sup>, Leontien C. M. Kremer<sup>1,20</sup> & Jop C. Teepen<sup>1</sup>

<sup>21</sup>National Cancer Institute, National Institutes of Health, Bethesda, MD, USA. <sup>22</sup>Institute of Cancer Research, Sutton, UK. <sup>23</sup>Department of Pathology and Laboratory Medicine, Nationwide Children's Hospital, Columbus, OH, USA. <sup>24</sup>Department of Pathology, The Ohio State University Wexner Medical Center, Columbus, OH, USA. <sup>25</sup>University of Rochester Medical Center, Rochester, NY, USA. <sup>26</sup>Centre for Childhood Cancer Survivor Studies, University of Birmingham, Birmingham, UK. <sup>27</sup>Radboudumc Center of Expertise for Cancer Survivorship, Department of Hematology, Radboud University Medical Center, Nijmegen, The Netherlands. <sup>28</sup>Department of Internal Medicine, Leiden University Medical Center, Leiden, The Netherlands. <sup>29</sup>Department of Radiation Oncology, University Medical Centre Utrecht, Utrecht, The Netherlands. <sup>30</sup>Danish Cancer Society Research Center, Copenhagen, Denmark. <sup>31</sup>Childhood Cancer Research Group, Danish Cancer Society Research Center, Copenhagen, Denmark. <sup>32</sup>Department of Clinical Medicine, Faculty of Health, Aarhus University and Aarhus University Hospital, Aarhus, Denmark.

## Methods

### Study population

We pooled data from five cohort studies (CCSS (9,671 women diagnosed in period 1970–1999), SJLIFE (2,236 women diagnosed in period 1962–2012), DCCSS-LATER (2,237 women diagnosed in period 1963–2001), FCCSS (3,415 women diagnosed in period 1943–2000) and Dutch Hodgkin Late Effects cohort (265 women diagnosed in period 1965–1995)) and one case–cohort study (SCCSS, 79 women diagnosed in period 1976–2007) in Europe and North America with available data on radiotherapy cumulative dose and fields and cumulative dose for chemotherapy (Fig. 1). Details of the study design and methodology have been previously described<sup>25</sup>. Briefly, eligibility criteria included a primary cancer diagnosis at <21 years of age, survival ≥5 years from primary cancer diagnosis, follow-up data on the presence and type of subsequent primary neoplasms.

### Ethics approval

The contributing cohort study teams obtained institutional review board and/or Ethics Committee approval or exemption in their respective contributing institute (CCSS: The St. Jude Children's Research Hospital Institutional Review Board (ref. 021289), SJLIFE: The St. Jude Children's Research Hospital Institutional Review Board (ref. 021898); DCCSS-LATER: Medical Ethical Committee Academic Medical Center, Amsterdam (ref. MEC 08/2014); FCCSS: ethics committee of the INSERM (ref. 12-077); Dutch Hodgkin Late Effects cohort: the NKI-AVL Institutional Review Board (ref. IRBd20-155); SCCSS: the cantonal ethics committee Bern (ref. KEK BE 166/2014 and KEK BE 183/11)). The pooling effort is exempt from review in compliance with Dutch law and regulations for health research involving human beings. Data sharing agreements between the Princess Máxima Center for Pediatric Oncology and all data providers are in place. Written consent was obtained from all patients of the CCSS and the SJLIFE. Specific informed consent for retrospective data collections for selected groups of patients for the DCCSS-LATER, the Dutch Hodgkin Late Effects cohort, the FCCSS and the SCCSS cohorts was waived in accordance with the country's legislation.

### Ascertainment of treatment information and SBC diagnosis

For each patient in the individual cohorts, diagnostic information of the childhood cancer and treatment details of primary cancer and recurrences were ascertained by medical record abstraction<sup>25</sup>. CED was calculated and used as the cumulative exposure of alkylating agents<sup>26</sup>. Radiotherapy fields involving the chest, collectively referred to as 'chest radiotherapy' included whole lung, TBI, mantle, mediastinal and other chest-exposing fields (for example, axilla and spine). Pelvic radiotherapy included any field involving the pelvis, including TBI.

Methods for ascertainment and validation of SBC differed among the included cohorts. The study teams applied various combinations of cancer registry linkage, self-reported survey data with medical record validation for survivors who reported SBC and/or information extracted from pathology reports or medical records (Supplementary Table 6). Details regarding cohort-specific methodology for definitions of treatment exposures and subsequent tumor ascertainment were reported previously<sup>25</sup>. Vital status was ascertained by linkages to national death registries and/or by medical records.

### Statistical analysis

Childhood cancer survivors were considered at risk for developing SBC from 5 years after a primary cancer diagnosis until the date of the first SBC, death or the date of the last follow-up observation, whichever occurred first.

The incidence of SBC in the pooled cohort was compared with the general female population using country-specific incidence rates of the Cancer Incidence in Five Continents database (CIS, <https://ci5.iarc.fr/>), a database from the International Agency for Research on Cancer containing information from cancer registries

worldwide<sup>27</sup>. Because no French nationwide incidence data were available from the CIS, we used data from the French cancer registry network Francim for the incidence rate of breast cancer in France<sup>28–30</sup>. SIRs were calculated as the ratio of the observed number of SBC to the expected number of female breast cancers. Expected numbers were estimated by accumulating cohort-specific person-years at risk by country, age (5-year bands), and calendar year (1-year bands)-specific strata and multiplying by the corresponding female breast cancer incidence rates in the general population. EARs were calculated as the differences between observed and expected numbers of female breast cancer per 1,000 person-years at risk. Because population-based breast cancer incidence rates only include invasive tumors, we considered the first invasive breast cancer as an event for these analyses. Cumulative incidences of SBC overall and by treatment subgroups were calculated, treating death as a competing risk.

Multivariable Cox proportional hazards regression analyses, stratified by cohort, were used to compute HRs and 95% CIs of SBC, either invasive breast cancer or DCIS, according to treatment exposure categories using a one-stage approach and stratifying the analyses by cohort. Attained age was used as the time scale<sup>31</sup>. Weights were applied to account for the case–cohort data from the SCCSS and for the under-sampling of acute lymphoblastic leukemia cases in the CCSS data. The proportional hazards assumption was checked with scaled Schoenfeld residuals in Cox models; it was not violated. The base multivariable model included specific anthracycline agents, age at primary cancer diagnosis, the combination of the chest radiation field and its associated maximum dose, pelvic radiation dose ≥5 Gy and alkylating agent CED exposure, all of which have been shown or suggested to be associated with breast cancer risk in previous studies<sup>6,11,16,32,33</sup>. We modeled cumulative doxorubicin dose and daunorubicin dose (categories by steps of 100 mg m<sup>-2</sup> to ≥400 mg m<sup>-2</sup> for doxorubicin dose and to ≥200 mg m<sup>-2</sup> for daunorubicin dose due to statistical power reasons, respectively, and continuously per 100 mg m<sup>-2</sup> increase) and epirubicin (yes/no); this proved infeasible for idarubicin owing to limited numbers of females treated with this agent. We first categorized chest radiotherapy as the combination of each eligible radiation field (defined above) with the associated maximum chest radiotherapy dose below or above the median categorized as low-dose or high-dose, respectively. Because results were comparable for fields with similar levels of potential radiation exposure to the breast, we categorized chest radiotherapy as follows: no chest radiotherapy, high-dose mantle, low-dose mantle, mediastinal, TBI, whole lung and other. Because there is only evidence for associations between anthracyclines and alkylating agents on SBC risk, we applied the following selection procedure to evaluate other chemotherapeutic agents: we added binary indicators for epipodophyllotoxins, vinca alkaloids, platinum compounds and antimetabolites to the base model. If addition of each variable changed any HRs of cumulative doxorubicin and/or daunorubicin dose by >10% compared to a model without the variable, it was included in the final models (Supplementary Table 7). Our final multivariable analyses did not include any of the additional classes of chemotherapeutic agents indicated above.

Interaction between cumulative doxorubicin/daunorubicin doses and chest radiotherapy and age at primary childhood cancer diagnosis on a multiplicative scale was evaluated by comparing models with and without the interaction term via likelihood ratio tests. Aalen's additive hazard models were applied to evaluate the interaction of cumulative doxorubicin/daunorubicin exposures and chest radiotherapy and age at primary childhood cancer diagnosis on an additive scale<sup>34</sup>.

A series of prespecified sensitivity analyses were conducted by applying the same regression models to the data with (a) outcome restricted to invasive breast cancer to exclude DCIS, which does not always progress to invasive breast cancer; (b) censoring at the time of the first non-SBC subsequent malignant neoplasm diagnosis to rule out effects of treatments for those tumors; (c) excluding 444 survivors treated for childhood cancer before 1970 to exclude a potentially



influential group of women who reached comparatively high attained age yet showing deviating characteristics owing to improvements in clinical practice and survival trends since the 1970s; (d) excluding survivors treated for Hodgkin lymphoma to exclude patients who generally received extensive radiotherapy fields to the chest (Extended Data Table 5) (e) excluding each cohort on a one-by-one basis to evaluate robustness of findings (Supplementary Table 4) and each cohort to evaluate between-cohort differences (Supplementary Table 5).

All analyses were conducted in R software (version 4.0.3). A *P* value of <0.05 was considered statistically significant in two-sided statistical tests.

### Reporting summary

Further information on research design is available in the Nature Portfolio Reporting Summary linked to this article.

### Data availability

The International Consortium for Pooled Studies on Subsequent Malignancies after Childhood and Adolescent Cancer database is not an open-access database due to ethical and data protection constraints. The pseudonymized data are managed by the Princess Máxima Center for Pediatric Oncology in the Netherlands and cannot be shared with investigators outside the institute without consent from all involved parties. However, potential collaborators are welcome to submit proposals to J.C.T. ([j.c.teepen@prinsesmaximacentrum.nl](mailto:j.c.teepen@prinsesmaximacentrum.nl)), which will be considered by the consortium. The consortium will come up with a decision about submitted proposals within 3 months after application. The country-specific female breast cancer rates of the Cancer Incidence in Five Continents database were used as the general female population in our study. These data are publicly available: <https://ci5.iarc.fr/>.

### Code availability

The statistical code for our main analyses is available at <https://github.com/yuehanwanggitub/IPDanthracyclines.git>.

### References

- Green, D. M. et al. The cyclophosphamide equivalent dose as an approach for quantifying alkylating agent exposure: a report from the childhood cancer survivor study. *Pediatr. Blood Cancer* **61**, 53–67 (2014).
- Bray, F. et al. *Cancer Incidence in Five Continents (Electronic Version)* Vol. 11 (International Agency for Research on Cancer, 2017).
- Binder-Foucard, F. et al. Cancer incidence and mortality in France over the 1980–2012 period: solid tumors. *Rev. Epidemiol. Sante Publique* **62**, 95–108 (2014).
- Defossez, G. et al. Cancer incidence and mortality trends in France over 1990–2018 for solid tumors: the sex gap is narrowing. *BMC Cancer* **21**, 726 (2021).
- Ménégoz, F. et al. Cancer incidence and mortality in France in 1975–95. *Eur. J. Cancer Prev.* **6**, 442–466 (1997).
- Yasui, Y. et al. A methodological issue in the analysis of second-primary cancer incidence in long-term survivors of childhood cancers. *Am. J. Epidemiol.* **158**, 1108–1113 (2003).
- Swerdlow, A. J. et al. Breast cancer risk after supradiaphragmatic radiotherapy for Hodgkin's lymphoma in England and Wales: a National Cohort Study. *J. Clin. Oncol.* **30**, 2745–2752 (2012).
- Moskowitz, C. S. et al. Radiation-associated breast cancer and gonadal hormone exposure: a report from the childhood cancer survivor study. *Br. J. Cancer* **117**, 290–299 (2017).
- Rod, N. H., Lange, T., Andersen, I., Marott, J. L. & Diderichsen, F. Additive interaction in survival analysis: use of the additive hazards model. *Epidemiology* **23**, 733–737 (2012).

### Acknowledgements

This work was supported by the Children Cancer Free Foundation (KiKa; grant 325 title: risk factors for female breast cancer after treatment for childhood and adolescent cancer: individual patient data analyses of an internationally pooled cohort) to C.M.R., F.E.v.L., L.C.M.K. (principal investigators). The CCSS and SJLIFE cohorts are supported by the National Cancer Institute (CA55727 to G.T.A. (principal investigator) and CA195547 to M.M.H. and K.K.N. (principal investigators)) as well as support to St. Jude Children's Research Hospital also provided by the Cancer Center Support (CORE) grant (CA21765 to C.R. (principal investigator)) and the American Lebanese-Syrian Associated Charities (ALSAC). The NWTSG was supported by the National Cancer Institute (CA054498 to N.E.B. and W.L. (principal investigator)). The DCCSS-LATER is supported by the Dutch Cancer Society (DCOG2011-5027 to C.M.R., F.E.v.L. and W.T. (principal investigators) and UVA2012-5517 to C.M.R. and L.C.M.K. (principal investigators)). The FCCSS is funded by the Fondation ARC (PopHARC Grant to F.d.V. (principal investigator)), the Agence Nationale pour la Recherche Médicale (ANR, Hope-Epi Grant to F.d.V. (principal investigator)), and the Gustave Roussy Foundation (Pediatric Program 'Guérir le Cancer de l'Enfant' to F.d.V. (principal investigator)). The SCCSS has been supported by the Swiss Cancer League and the Swiss Cancer Research foundation (KFS-02783-02-2011, KLS-3412-02-2014, KFS-4157-02-2017, KLS/KFS-4825-01-2019, KFS-4722-02-2019, KFS-5027-02-2020, KFS-5302-02-2021 and KLS-5432-08-2021 to C.E.K. (principal investigator)), Kinderkrebs Schweiz ([www.kinderkrebs-schweiz.ch](http://www.kinderkrebs-schweiz.ch)) and Kinderkrebshilfe Schweiz ([www.kinderkrebshilfe.ch](http://www.kinderkrebshilfe.ch)). The Dutch Hodgkin Late Effects cohort has been supported by the Dutch Cancer Society (NKI 2010-4720 to F.E.v.L. (principal investigator)).

### Author contributions

Y.W., J.C.T., L.C.M.K., C.M.R. and F.E.v.L. designed and conceptualized the study. J.C.T., L.C.M.K., C.M.R. and F.E.v.L. acquired funding and supervised the project. G.T.A., M.M.H., W.L., F.v.D., L.C.M.K., F.E.v.L. and C.E.K. provided administrative, technical or material support. Y.W., J.C.T., C.S.M. and W.L. performed the statistical analyses. Y.W., J.C.T., L.C.M.K., C.M.R. and F.E.v.L. drafted the manuscript. All authors contributed to data interpretation and manuscript revision and approved the final version for publication.

### Competing interests

The authors declare no competing interests.

### Additional information

**Extended data** is available for this paper at <https://doi.org/10.1038/s41591-023-02514-1>.

**Supplementary information** The online version contains supplementary material available at <https://doi.org/10.1038/s41591-023-02514-1>.

**Correspondence and requests for materials** should be addressed to Yuehan Wang.

**Peer review information** *Nature Medicine* thanks Joachim Schuz, Giuseppe Curigliano and the other, anonymous, reviewer(s) for their contribution to the peer review of this work. Primary Handling Editor: Ming Yang, in collaboration with the *Nature Medicine* team.

**Reprints and permissions information** is available at [www.nature.com/reprints](http://www.nature.com/reprints).



**Extended Data Table 1 | Demographic and treatment characteristics of female five-year childhood cancer survivors by cumulative doxorubicin dose categories**

	Cumulative doxorubicin dose (mg/m <sup>2</sup> ) category							Total (N = 17,903)
	No doxorubicin (n = 11,170)	<100 (n = 912)	100-199 (n = 1,795)	200-299 (n = 1,026)	300-399 (n = 1,012)	≥400 (n = 779)	Unknown <sup>a</sup> (n = 1,209)	
<b>Cohort</b>								
CCSS	5,729 (51.3%)	502 (55.0%)	769 (42.8%)	590 (57.5%)	568 (56.1%)	474 (60.8%)	1,039 (85.9%)	9,671 (54.0%)
SJLIFE	1,377 (12.3%)	121 (13.3%)	414 (23.1%)	124 (12.1%)	146 (14.4%)	35 (4.5%)	19 (1.6%)	2,236 (12.5%)
DCCSS-LATER	1,541 (13.8%)	188 (20.6%)	232 (12.9%)	62 (6.0%)	77 (7.6%)	124 (15.9%)	13 (1.1%)	2,237 (12.5%)
FCCSS	2,300 (20.6%)	95 (10.4%)	347 (19.3%)	207 (20.2%)	203 (20.1%)	137 (17.6%)	126 (10.4%)	3,415 (19.1%)
DHL	181 (1.6%)	5 (0.5%)	20 (1.1%)	38 (3.7%)	11 (1.1%)	6 (0.8%)	4 (0.3%)	265 (1.5%)
SCCSS	42 (0.4%)	1 (0.1%)	13 (0.7%)	5 (0.5%)	7 (0.7%)	3 (0.4%)	8 (0.7%)	79 (0.4%)
<b>Primary childhood cancer type</b>								
Leukemia	2,974 (26.6%)	576 (63.2%)	404 (22.5%)	110 (10.7%)	116 (11.5%)	82 (10.5%)	312 (25.8%)	4,574 (25.5%)
Non-Hodgkin lymphoma	445 (4.0%)	72 (7.9%)	245 (13.6%)	91 (8.9%)	82 (8.1%)	73 (9.4%)	89 (7.4%)	1,097 (6.1%)
Hodgkin lymphoma	1,007 (9.0%)	63 (6.9%)	457 (25.5%)	284 (27.7%)	104 (10.3%)	22 (2.8%)	164 (13.6%)	2,101 (11.7%)
CNS tumor	2,767 (24.8%)	1 (0.1%)	5 (0.3%)	4 (0.4%)	4 (0.4%)	2 (0.3%)	163 (13.5%)	2,946 (16.5%)
Neuroblastoma	942 (8.4%)	104 (11.4%)	282 (15.7%)	109 (10.6%)	55 (5.4%)	40 (5.1%)	125 (10.3%)	1,657 (9.3%)
Retinoblastoma	360 (3.2%)	9 (1.0%)	35 (1.9%)	3 (0.3%)	4 (0.4%)	-	15 (1.2%)	426 (2.4%)
Renal tumor	950 (8.5%)	28 (3.1%)	158 (8.8%)	98 (9.6%)	50 (4.9%)	22 (2.8%)	66 (5.5%)	1,372 (7.7%)
Bone tumor	213 (1.9%)	23 (2.5%)	110 (6.1%)	175 (17.1%)	417 (41.2%)	387 (49.7%)	134 (11.1%)	1,459 (8.1%)
Soft tissue tumor	814 (7.3%)	25 (2.7%)	74 (4.1%)	111 (10.8%)	145 (14.3%)	136 (17.5%)	100 (8.3%)	1,405 (7.8%)
Germ cell tumor	376 (3.4%)	5 (0.5%)	9 (0.5%)	17 (1.7%)	14 (1.4%)	5 (0.6%)	14 (1.2%)	440 (2.5%)
Other malignant epithelial	266 (2.4%)	-	6 (0.3%)	5 (0.5%)	2 (0.2%)	-	18 (1.5%)	297 (1.7%)
Other <sup>b</sup>	56 (0.5%)	6 (0.6%)	10 (0.6%)	19 (1.9%)	19 (1.9%)	10 (0.6%)	10 (0.8%)	129 (0.7%)
<b>Age at primary childhood cancer diagnosis (yr) category</b>								
<5	5,076 (45.4%)	464 (50.9%)	700 (39.0%)	314 (30.6%)	224 (22.1%)	165 (21.2%)	433 (35.8%)	7,376 (41.2%)
5-9	2,490 (22.3%)	188 (20.6%)	295 (16.4%)	157 (15.3%)	229 (22.6%)	179 (23.0%)	250 (20.7%)	3,788 (21.2%)
10-14	2,139 (19.1%)	181 (19.8%)	452 (25.2%)	301 (29.3%)	326 (32.2%)	257 (33.0%)	274 (22.7%)	3,930 (22.0%)
15-21	1,465 (13.1%)	79 (8.7%)	348 (19.4%)	254 (24.8%)	233 (23.0%)	178 (22.8%)	252 (20.8%)	2,809 (15.7%)
<b>Childhood cancer diagnosis period</b>								
<1980	3,254 (29.1%)	47 (5.2%)	141 (7.9%)	148 (14.4%)	188 (18.6%)	306 (39.3%)	441 (36.5%) <sup>c</sup>	4,525 (25.3%)
1980-1989	3,715 (33.3%)	264 (28.9%)	520 (29.0%)	406 (39.6%)	448 (44.3%)	283 (36.3%)	485 (40.1%) <sup>c</sup>	6,121 (34.2%)
≥1990	4,201 (37.6%)	601 (65.9%)	1,134 (63.2%)	472 (46.0%)	376 (37.2%)	190 (24.4%)	283 (23.4%) <sup>c</sup>	7,257 (40.5%)
<b>Chest radiation fields and total doses combination</b>								
No chest radiotherapy	8,541 (76.5%)	752 (82.5%)	1,215 (67.7%)	693 (67.5%)	775 (76.6%)	655 (84.1%)	373 (30.9%)	13,004 (72.6%)
High-dose mantle (≥36 Gy)	537 (4.8%)	12 (1.3%)	44 (2.5%)	40 (3.9%)	27 (2.7%)	13 (1.7%)	25 (2.1%)	698 (3.9%)
Low-dose mantle (<36 Gy)	190 (1.7%)	19 (2.1%)	171 (9.5%)	81 (7.9%)	39 (3.9%)	6 (0.8%)	18 (1.5%)	524 (2.9%)
Mediastinal	226 (2.0%)	20 (2.2%)	105 (5.8%)	54 (5.3%)	31 (3.1%)	11 (1.4%)	22 (1.8%)	469 (2.6%)
TBI	215 (1.9%)	41 (4.5%)	72 (4.0%)	13 (1.3%)	11 (1.1%)	4 (0.5%)	15 (1.2%)	371 (2.1%)
Whole lung	68 (0.6%)	11 (1.2%)	38 (2.1%)	23 (2.2%)	30 (3.0%)	10 (1.3%)	4 (0.3%)	184 (1.0%)
Other	970 (8.7%)	30 (3.3%)	71 (4.0%)	67 (6.5%)	62 (6.1%)	54 (6.9%)	62 (5.1%)	1,316 (7.4%)
Unknown	423 (3.8%)	27 (3.0%)	79 (4.4%)	55 (5.4%)	37 (3.7%)	26 (3.3%)	690 (57.1%)	1,337 (7.5%)
<b>Treatment combinations<sup>d</sup></b>								
Anthracyclines <sup>e</sup> & Chest radiotherapy	288 (2.6%)	143 (15.7%)	530 (29.5%)	298 (29.0%)	208 (20.6%)	99 (12.7%)	68 (5.6%)	1,634 (9.1%)
Anthracyclines & No chest radiotherapy	1,443 (12.9%)	752 (82.5%)	1,215 (67.7%)	693 (67.5%)	775 (76.6%)	655 (84.1%)	181 (15.0%)	5,714 (31.9%)
No anthracyclines & Chest radiotherapy	1,962 (17.6%)	-	-	-	-	-	-	1,962 (11.0%)
No anthracyclines & No chest radiotherapy	7,096 (63.5%)	-	-	-	-	-	-	7,096 (39.6%)
Unknown	381 (3.4%)	17 (1.9%)	50 (2.8%)	35 (3.4%)	29 (2.9%)	25 (3.2%)	960 (79.4%)	1,497 (8.4%)
<b>Pelvic radiotherapy ≥5 Gy</b>								
No	8,926 (79.9%)	781 (85.6%)	1,388 (77.3%)	803 (78.3%)	799 (79.0%)	652 (83.7%)	402 (33.3%)	13,751 (76.8%)
Yes	1,863 (16.7%)	110 (12.1%)	351 (19.6%)	185 (18.0%)	180 (17.8%)	101 (13.0%)	121 (10.0%)	2,911 (16.3%)
Unknown	381 (3.4%)	21 (2.3%)	56 (3.1%)	38 (3.7%)	33 (3.3%)	26 (3.3%)	686 (56.7%)	1,241 (6.9%)

CCSS = Childhood Cancer Survivor Study; CNS = Central nervous system; DCCSS-LATER = Dutch Childhood Cancer Survivor Study LATER; DHL = Dutch Hodgkin Late Effects cohort; FCCSS = French Childhood Cancer Survivor Study; Gy = Gray; IQR = Interquartile range; SCCSS = Swiss Childhood Cancer Survivor Study; SJLIFE = St. Jude Lifetime Cohort Study; yr = year

<sup>a</sup>The Unknown category under the variable “Doxorubicin dose” included both survivor groups with any doxorubicin (yes/no) unknown (941 survivors) and with doxorubicin treatment but dose information unknown (268 survivors).

<sup>b</sup>Included the ICCC-3 classification groups “Hepatic Tumor” (61 survivors), “Other and Unspecified” (38 survivors), and “Unclassified” (30 survivors).

<sup>c</sup>The Unknown categories included survivors with any doxorubicin (yes/no) unknown and with doxorubicin treatment but dose information unknown: among survivors with childhood cancer diagnosis period <1980, 355 survivors had any doxorubicin (yes/no) unknown; among survivors with childhood cancer diagnosis period 1980-1989, 385 survivors had any doxorubicin (yes/no) unknown; among survivors with childhood cancer diagnosis period ≥1990, 201 survivors had any doxorubicin (yes/no) unknown.

<sup>d</sup>Treatment subgroup variable set to unknown if either of the treatment categories was unknown.

<sup>e</sup>Anthracyclines included doxorubicin, daunorubicin, epirubicin, and idarubicin.

**Extended Data Table 2 | Standardized incidence ratios, excess absolute risks, and cumulative incidences by treatments<sup>a</sup>**

Treatments: Cumulative doxorubicin dose & chest radiotherapy (yes/no)	No. of SBC cases				EAR/1,000 person-yr	Attained age (median, IQR)	Cumulative incidences at attained age 40
	Observed	Expected	SIR	95% CI			
Without chest radiotherapy							
No doxorubicin	91	53.0	1.7	1.4-2.1	0.2	32.8 (25.1-41.2)	0.8%
Cumulative doxorubicin dose <200 mg/m <sup>2</sup>	17	5.3	3.2	1.9-5.1	0.3	28.9 (23.1-35.9)	1.9%
Cumulative doxorubicin dose ≥200 mg/m <sup>2</sup>	84	15.0	5.6	4.5-6.9	1.5	36.5 (29.1-43.5)	3.4%
With chest radiotherapy							
No doxorubicin	250	23.4	10.7	9.4-12.1	4.5	38.4 (30.3-47.4)	7.9%
Cumulative doxorubicin dose <200 mg/m <sup>2</sup>	36	2.6	13.9	9.7-19.2	3.1	33.8 (27.2-39.1)	10.1%
Cumulative doxorubicin dose ≥200 mg/m <sup>2</sup>	58	3.3	17.5	13.3-22.6	5.0	36.1 (29.1-41.8)	8.1%

CI = Confidence interval; EAR = excess absolute risk; IQR = Interquartile range; No. = number; SBC = Subsequent breast cancer; SIR = Standardized incidence ratio; TBI = Total Body Irradiation; yr = year

<sup>a</sup>Because population-based breast cancer incidence rates only include invasive tumors, we considered the first invasive breast cancer as an event for these analyses.

# Extended Data Table 3 | Joint effects of cumulative doxorubicin and daunorubicin doses and other relevant risk factors on subsequent breast cancer among female five-year childhood cancer survivors

Interaction: Chest radiotherapy (yes/no)*Anthracycline agent dose						
	Cumulative doxorubicin dose per 100 mg/m <sup>2a</sup>			Cumulative daunorubicin dose per 100 mg/m <sup>2b</sup>		
	HR	95% CI	P value	HR	95% CI	P value
<b>Multiplicative interaction</b>						
Chest radiotherapy status (yes/no)*Anthracycline agent dose	0.86	0.78 - 0.96	0.006	0.77	0.57 - 1.05	0.10
<b>Additive interaction</b>	No. Additional Cases per 10,000 Person Years	95% CI	P value	No. Additional Cases per 10,000 Person Years	95% CI	P value
Chest radiotherapy status (yes/no)*Anthracycline agent dose	0.04	-4.82 - 4.90	0.99	-9.67	-15.8 - -3.50	0.002
Interaction: Chest radiotherapy field and dose*Anthracycline agent dose						
	Cumulative doxorubicin dose per 100 mg/m <sup>2a</sup>			Cumulative daunorubicin dose per 100 mg/m <sup>2b,c</sup>		
	HR	95% CI	P value	HR	95% CI	P value
<b>Multiplicative interaction</b>						
High-dose mantle (median 40 Gy, IQR 39-44 Gy)*Anthracycline agent dose	0.84	0.71 - 0.98	0.03	0.0003	0.0001 - 0.001	<2×10 <sup>-16</sup>
Low-dose mantle (median 26 Gy, IQR 21-30 Gy)*Anthracycline agent dose	0.94	0.77 - 1.13	0.49	0.0007	0.0002 - 0.002	<2×10 <sup>-16</sup>
Mediastinal (median 26 Gy, IQR 21-36 Gy)*Anthracycline agent dose	0.65	0.45 - 0.96	0.03	0.87	0.41 - 1.88	0.73
TBI (median 12 Gy, IQR 11-13 Gy)*Anthracycline agent dose	0.73	0.41 - 1.30	0.28	1.04	0.75 - 1.44	0.81
Whole lung (median 16 Gy, IQR 12-23 Gy)*Anthracycline agent dose	0.87	0.66 - 1.15	0.33	0.0003	0.00007 - 0.001	<2×10 <sup>-16</sup>
Other (median 28 Gy, IQR 21-36 Gy)*Anthracycline agent dose	1.01	0.86 - 1.18	0.95	0.45	0.18 - 1.15	0.10
			P <sub>Multiplicative interaction</sub> = 0.07			P <sub>Multiplicative interaction</sub> = 0.39
<b>Additive interaction</b>	No. Additional Cases per 10,000 Person Years	95% CI	P value	No. Additional Cases per 10,000 Person Years	95% CI	P value
High-dose mantle (median 40 Gy, IQR 39-44 Gy)*Anthracycline agent dose	-4.54	-25.5 - 16.4	0.66	-75.3	-88.8 - -61.8	<1×10 <sup>-16</sup>
Low-dose mantle (median 26 Gy, IQR 21-30 Gy)*Anthracycline agent dose	7.99	-8.41 - 24.4	0.33	-20.6	-28.0 - -13.2	0.001
Mediastinal (median 26 Gy, IQR 21-36 Gy)*Anthracycline agent dose	-4.48	-12.2 - 3.28	0.26	-2.02	-17.0 - 12.9	0.80
TBI (median 12 Gy, IQR 11-13 Gy)*Anthracycline agent dose	-8.66	-27.3 - 9.98	0.35	4.96	-7.52 - 17.4	0.45
Whole lung (median 16 Gy, IQR 12-23 Gy)*Anthracycline agent dose	-7.48	-23.8 - 8.85	0.37	-20.5	-30.1 - -10.9	0.02
Other (median 28 Gy, IQR 21-36 Gy)*Anthracycline agent dose	5.41	-0.51 - 11.3	0.09	-7.51	-12.1 - -2.96	0.002
Interaction: Age at primary childhood cancer diagnosis*Anthracycline agent dose						
	Cumulative doxorubicin dose per 100 mg/m <sup>2d</sup>			Cumulative daunorubicin dose per 100 mg/m <sup>2e</sup>		
	HR	95% CI	P value	HR	95% CI	P value
<b>Multiplicative interaction</b>						
Diagnosis age 5-9 yr*Anthracycline agent dose	1.33	0.98 - 1.81	0.07	1.76	0.91 - 3.39	0.09
Diagnosis age 10-14 yr*Anthracycline agent dose	1.37	1.03 - 1.82	0.03	1.67	0.88 - 3.17	0.12
Diagnosis age 15-21 yr*Anthracycline agent dose	1.34	1.01 - 1.78	0.04	1.43	0.71 - 2.88	0.32
			P <sub>Multiplicative interaction</sub> = 0.09			P <sub>Multiplicative interaction</sub> = 0.30
<b>Additive interaction</b>	No. Additional Cases per 10,000 Person Years	95% CI	P value	No. Additional Cases per 10,000 Person Years	95% CI	P value
Diagnosis age 5-9*Anthracycline agent dose	2.30	0.42 - 4.18	0.02	3.03	-0.81 - 6.87	0.14
Diagnosis age 10-14*Anthracycline agent dose	6.53	3.55 - 9.51	0.00002	4.43	-1.78 - 10.6	0.16
Diagnosis age 15-21*Anthracycline agent dose	8.71	4.14 - 13.3	0.00019	-1.88	-10.2 - 6.45	0.66

CI = Confidence interval; Gy = Gray; HR = Hazard ratio; IQR = Interquartile range; No. = number; TBI = Total Body Irradiation

Interaction on a multiplicative scale was evaluated by comparing models with and without the interaction term via likelihood ratio tests. Aalen's additive hazard models were applied to evaluate the interaction on an additive scale. A P value of <0.05 was considered statistically significant in 2-sided statistical tests.

<sup>a</sup>Models were further adjusted for cumulative daunorubicin dose (continuous variable), epirubicin (yes/no), pelvic radiotherapy ≥5 Gy (yes/no), age at primary childhood cancer diagnosis category (categorical variable), and cyclophosphamide equivalent dose (categorical variable).

<sup>b</sup>Models were further adjusted for cumulative doxorubicin dose (continuous variable), epirubicin (yes/no), pelvic radiotherapy ≥5 Gy (yes/no), age at primary childhood cancer diagnosis category (categorical variable), and cyclophosphamide equivalent dose (categorical variable).

<sup>c</sup>The estimates for the joint effects between cumulative daunorubicin dose and chest radiotherapy field and dose were unstable due to limited numbers under chest radiotherapy field and dose\*cumulative daunorubicin dose categories.

<sup>d</sup>Models were further adjusted for cumulative daunorubicin dose (continuous variable), epirubicin (yes/no), pelvic radiotherapy ≥5 Gy (yes/no), chest radiotherapy field and dose (categorical variable), and cyclophosphamide equivalent dose (categorical variable).

<sup>e</sup>Models were further adjusted for cumulative doxorubicin dose (continuous variable), epirubicin (yes/no), pelvic radiotherapy ≥5 Gy (yes/no), chest radiotherapy field and dose (categorical variable), and cyclophosphamide equivalent dose (categorical variable).

Extended Data Table 4 | Multivariable Cox proportional hazard regression analyses for subsequent breast cancer in female five-year childhood cancer survivors with different chest radiotherapy fields irradiation<sup>a</sup>

	No chest radiotherapy		Mantle field irradiation		Mediastinal field irradiation		TBI or whole lung field irradiation		Other chest fields irradiation	
	HR	95% CI	HR	95% CI	HR	95% CI	HR	95% CI	HR	95% CI
Cumulative doxorubicin dose, mg/m <sup>2</sup>										
0	1.0	Ref.	1.0	Ref.	1.0	Ref.	1.0	Ref.	1.0	Ref.
<200	1.53	0.84-2.78	2.16	1.36-3.42	0.95	0.17-5.27	1.13	0.40-3.18	3.55	1.33-9.51
≥200	2.90	2.06-4.08	1.62	1.01-2.61	2.30	0.89-5.92	1.22	0.45-3.35	5.20	2.43-11.14
Continuous variable: Chest radiotherapy dose (Gy)			1.03	1.01-1.05	1.02	0.98-1.06	1.03	1.00-1.07	1.01	0.99-1.03
Pelvic radiotherapy ≥5 Gy										
No	1.0	Ref.	1.0	Ref.	1.0	Ref.	1.0	Ref.	1.0	Ref.
Yes	1.79	1.24-2.58	0.90	0.69-1.18	0.41	0.14-1.23	0.53	0.24-1.18	0.91	0.48-1.75
Age at primary childhood cancer diagnosis, yr										
<5	1.0	Ref.	1.0	Ref.	1.0	Ref.	1.0	Ref.	1.0	Ref.
5-9	1.27	0.75-2.14			1.58	0.23-10.76	1.82	0.51-6.46	0.69	0.27-1.77
10-14	2.17	1.44-3.29	3.86	1.42-10.54	1.29	0.26-6.47	2.19	0.64-7.48	0.99	0.46-2.13
15-21	1.80	1.15-2.79	3.45	1.26-9.42	0.91	0.18-4.74	1.77	0.43-7.35	1.80	0.70-4.66
CED <sup>b</sup> , mg/m <sup>2</sup>										
None	1.0	Ref.	1.0	Ref.			1.0	Ref.	1.0	Ref.
<6000	0.92	0.58-1.44	0.59	0.37-0.93			1.20	0.53-2.71	1.17	0.48-2.86
6000-17999	1.28	0.88-1.87	0.76	0.54-1.05			1.30	0.54-3.17	0.48	0.20-1.12
≥18000	2.03	1.26-3.29	0.97	0.46-2.04			0.62	0.16-2.48	0.26	0.06-1.05
Alkylating agents										
No					1.0	Ref.				
Yes					0.75	0.26-2.17				

CED = Cyclophosphamide Equivalent Dose; CI = Confidence interval; Gy = Gray; HR = Hazard ratio; TBI = Total Body Irradiation; yr = year

<sup>a</sup>All models included cumulative doxorubicin dose (categorical variable), chest radiotherapy dose (continuous variable), pelvic radiotherapy ≥5 Gy (yes/no), age at primary childhood cancer diagnosis (categorical variable), and CED dose (categorical variable), except the model in survivors with no chest radiotherapy (no chest radiotherapy dose variable in the model), and the model in survivors with mediastinal field irradiation, which was adjusted for alkylating agents (yes/no), instead of CED dose, owing to a low number of cases in some of the CED categories.

<sup>b</sup>Cyclophosphamide Equivalent Dose calculation: CED (mg/m<sup>2</sup>) = 1.0 (cumulative cyclophosphamide dose (mg/m<sup>2</sup>)) + 0.244 (cumulative ifosfamide dose (mg/m<sup>2</sup>)) + 0.857 (cumulative procarbazine dose (mg/m<sup>2</sup>)) + 14.286 (cumulative chlorambucil dose (mg/m<sup>2</sup>)) + 15.0 (cumulative BCNU (carmustine) dose (mg/m<sup>2</sup>)) + 16.0 (cumulative CCNU (lomustine) dose (mg/m<sup>2</sup>)) + 40 (cumulative melphalan dose (mg/m<sup>2</sup>)) + 50 (cumulative Thio-TEPA (thiotepa) dose (mg/m<sup>2</sup>)) + 100 (cumulative nitrogen mustard dose (mg/m<sup>2</sup>)) + 8.823 (cumulative busulfan dose (mg/m<sup>2</sup>)).

**Extended Data Table 5 | Sensitivity analyses for risk of subsequent breast cancer on subgroups with different treatments or events<sup>a</sup>**

	a) Only invasive breast cancer as events <sup>b</sup>				b) Censoring at the time of the first non-SBC subsequent malignant neoplasm diagnosis <sup>c</sup>				c) Excluding 444 survivors treated for childhood cancer prior to 1970 <sup>d</sup>				d) Excluding survivors treated for Hodgkin lymphoma <sup>e</sup>			
	No. SBC	Total	HR	95% CI	No. SBC	Total	HR	95% CI	No. SBC	Total	HR	95% CI	No. SBC	Total	HR	95% CI
<b>Cumulative doxorubicin dose, mg/m<sup>2</sup></b>																
0	347 (56.3%)	11,170 (62.4%)	1.0	Ref.	390 (54.5%)	11,150 (62.4%)	1.0	Ref.	395 (53.5%)	10,752 (61.6%)	1.0	Ref.	163 (43.2%)	10,163 (64.3%)	1.0	Ref.
<100	12 (1.9%)	912 (5.1%)	1.64	0.74-3.64	16 (2.2%)	910 (5.1%)	1.90	0.94-3.80	16 (2.2%)	912 (5.2%)	1.84	0.92-3.68	10 (2.7%)	849 (5.4%)	1.73	0.70-4.28
100-199	46 (7.5%)	1,795 (10.0%)	1.43	0.99-2.08	63 (8.8%)	1,792 (10.0%)	1.67	1.20-2.31	69 (9.3%)	1,792 (10.3%)	1.83	1.34-2.51	23 (6.1%)	1,338 (8.5%)	1.43	0.85-2.43
200-299	54 (8.8%)	1,026 (5.7%)	2.49	1.77-3.49	64 (8.9%)	1,024 (5.7%)	2.50	1.83-3.41	67 (9.1%)	1,025 (5.9%)	2.57	1.89-3.50	35 (9.3%)	742 (4.7%)	3.21	2.12-4.88
300-399	47 (7.6%)	1,012 (5.7%)	1.95	1.34-2.84	60 (8.4%)	1,007 (5.6%)	2.36	1.68-3.30	63 (8.5%)	1,011 (5.8%)	2.41	1.73-3.34	44 (11.7%)	908 (5.7%)	2.77	1.87-4.11
≥400	48 (7.8%)	779 (4.4%)	2.54	1.76-3.66	52 (7.3%)	778 (4.4%)	2.69	1.90-3.82	58 (7.8%)	778 (4.5%)	2.84	2.02-3.98	54 (14.3%)	757 (4.8%)	3.38	2.30-4.95
Unknown	62 (10.1%)	1,209 (6.8%)	-	-	71 (9.9%)	1,208 (6.8%)	-	-	71 (9.6%)	1,189 (6.8%)	-	-	48 (12.7%)	1,045 (6.6%)	-	-
<b>Cumulative daunorubicin dose, mg/m<sup>2</sup></b>																
0	530 (86.0%)	14,630 (81.7%)	1.0	Ref.	626 (87.4%)	14,602 (81.7%)	1.0	Ref.	648 (87.7%)	14,215 (81.4%)	1.0	Ref.	304 (80.6%)	12,667 (80.2%)	1.0	Ref.
<100	7 (1.1%)	623 (3.5%)	1.22	0.56-2.63	6 (0.8%)	620 (3.5%)	0.90	0.39-2.05	6 (0.8%)	619 (3.5%)	0.88	0.39-2.00	7 (1.9%)	623 (3.9%)	1.02	0.47-2.20
100-199	12 (1.9%)	953 (5.3%)	0.82	0.41-1.64	15 (2.1%)	952 (5.3%)	0.94	0.51-1.73	16 (2.2%)	949 (5.4%)	1.05	0.58-1.87	16 (4.2%)	952 (6.0%)	1.03	0.56-1.88
≥200	14 (2.3%)	645 (3.6%)	1.26	0.68-2.33	16 (2.2%)	644 (3.6%)	1.24	0.70-2.22	17 (2.3%)	644 (3.7%)	1.26	0.71-2.24	17 (4.5%)	645 (4.1%)	1.35	0.74-2.46
Unknown	53 (8.6%)	1,052 (5.9%)	-	-	53 (7.4%)	1,051 (5.9%)	-	-	52 (7.0%)	1,032 (5.9%)	-	-	33 (8.8%)	915 (5.8%)	-	-
<b>Epirubicin</b>																
No	559 (90.7%)	16,637 (92.9%)	1.0	Ref.	657 (91.8%)	16,604 (92.9%)	1.0	Ref.	680 (92.0%)	16,210 (92.8%)	1.0	Ref.	339 (89.9%)	14,685 (92.9%)	1.0	Ref.
Yes	6 (1.0%)	325 (1.8%)	2.67	1.10-6.44	8 (1.1%)	325 (1.8%)	3.99	1.95-8.17	9 (1.2%)	325 (1.9%)	3.70	1.80-7.58	7 (1.9%)	300 (1.9%)	2.99	1.18-7.57
Unknown	51 (8.3%)	941 (5.3%)	-	-	51 (7.1%)	940 (5.3%)	-	-	50 (6.8%)	924 (5.3%)	-	-	31 (8.2%)	817 (5.2%)	-	-

CED = Cyclophosphamide Equivalent Dose; CI = Confidence interval; HR = Hazard ratio; No. = number; SBC = Subsequent breast cancer; TBI = Total body irradiation; yr = year

<sup>a</sup>All sensitivity analyses were further adjusted for chest radiotherapy field and dose (categorical variable), pelvic radiotherapy ≥5 Gy (yes/no), age at primary childhood cancer diagnosis (categorical variable), and cyclophosphamide equivalent dose (categorical variable).<sup>b</sup>Outcome restricted to invasive breast cancer to exclude ductal carcinoma in situ, which does not always progress to invasive breast cancer. In total, 616 survivors developed subsequent invasive breast cancer. One survivor had a SBC prior to five years after primary cancer.<sup>c</sup>Censoring at the time of the first non-SBC subsequent malignant neoplasm diagnosis to rule out effects of treatments for those tumors. In total, 34 survivors who had a subsequent malignant neoplasm other than breast cancer within five years after primary cancer diagnosis were excluded. And 66 SBC cases were not included in the analysis because a subsequent malignant neoplasm other than breast cancer occurred before SBC.<sup>d</sup>Excluding 444 survivors with 43 SBC cases treated for childhood cancer prior to 1970 to exclude a potentially influential group of women who reached comparatively high attained age yet showing deviating characteristics owing to improvements in clinical practice and survival trends since the 1970s.<sup>e</sup>Excluding survivors treated for Hodgkin lymphoma to exclude patients who generally received extensive radiotherapy fields to the chest. In total, 2,101 survivors with 405 SBC cases were excluded.



## Extended Data Table 6 | Multivariable Cox proportional hazard regression analyses for subsequent breast cancer in female five-year childhood cancer survivors stratified by chest radiotherapy status (yes/no)

	Survivors with chest radiotherapy (478 cases/3,693 survivors)								Survivors without chest radiotherapy (250 cases/13,004 survivors)							
					Model I		Model II <sup>a</sup>						Model I		Model II <sup>a</sup>	
	Cohort Members	%	No. SBC	%	HR	95% CI	HR	95% CI	Cohort Members	%	No. SBC	%	HR	95% CI	HR	95% CI
<b>Cumulative doxorubicin dose, mg/m<sup>2</sup></b>																
0	2,260	61.2	313	65.5	1.0	Ref.			8,541	65.7	101	40.4	1.0	Ref.		
<100	143	3.9	8	1.7	1.24	0.54-2.85			752	5.8	7	2.8	2.63	0.93-7.45		
100-199	530	14.4	54	11.3	1.88	1.33-2.65			1,215	9.3	12	4.8	1.25	0.63-2.49		
200-299	298	8.1	42	8.8	2.18	1.46-3.24			693	5.3	23	9.2	2.79	1.67-4.66		
300-399	208	5.6	26	5.4	1.77	1.04-3.01	-		775	6.0	34	13.6	2.65	1.69-4.14	-	
≥400	99	2.7	7	1.5	0.43	0.09-2.01			655	5.0	49	19.6	3.65	2.41-5.53		
Unknown	155	4.2	28	5.9	-	-			373	2.9	24	9.6	-	-		
<b>Continuous variable: Cumulative doxorubicin dose (per 100 mg/m<sup>2</sup>)</b>							1.14	1.04-1.25							1.26	1.17-1.36
<b>Cumulative daunorubicin dose, mg/m<sup>2</sup></b>																
0	3,247	87.9	441	92.3	1.0	Ref.			10,893	83.8	216	86.4	1.0	Ref.		
<100	65	1.8	2	0.4	1.06	0.26-4.42			548	4.2	5	2.0	0.99	0.39-2.52		
100-199	131	3.5	10	2.1	1.71	0.87-3.33			805	6.2	5	2.0	0.49	0.16-1.54		
≥200	131	3.5	4	0.8	0.87	0.31-2.45	-		493	3.8	11	4.4	1.51	0.75-3.02	-	
Unknown	119	3.2	21	4.4	-	-			265	2.0	13	5.2	-	-		
<b>Continuous variable: Cumulative daunorubicin dose (per 100 mg/m<sup>2</sup>)</b>							1.04	0.82-1.33							1.12	0.93-1.36
<b>Epirubicin</b>																
No	3,567	96.6	452	94.6	1.0	Ref.	1.0	Ref.	12,533	96.4	236	94.4	1.0	Ref.	1.0	Ref.
Yes	39	1.1	5	1.0	3.76	1.81-7.82	3.36	1.61-7.01	279	2.1	3	1.2	2.18	0.51-9.38	2.13	0.49-9.17
Unknown	87	2.4	21	4.4	-	-	-	-	192	1.5	11	4.4	-	-	-	-
<b>Chest radiotherapy field and dose</b>																
High-dose mantle (≥36 Gy)	698	18.9	238	49.8	1.0	Ref.	1.0	Ref.								
Low-dose mantle (<36 Gy)	524	14.2	93	19.5	0.54	0.40-0.73	0.61	0.46-0.80								
Mediastinal	468	12.7	32	6.7	0.18	0.10-0.29	0.18	0.10-0.31								
TBI	369	10.0	21	4.4	0.93	0.56-1.54	1.02	0.60-1.71								
Whole lung	184	5.0	23	4.8	0.89	0.54-1.47	0.90	0.55-1.50								
Other	1,312	35.5	63	13.2	0.31	0.22-0.44	0.31	0.22-0.44								
Unknown	138	3.7	8	1.7	-	-	-	-								
<b>Pelvic radiotherapy ≥5 Gy</b>																
No	1,882	51.0	296	61.9	1.0	Ref.	1.0	Ref.	11,869	91.3	209	83.6	1.0	Ref.	1.0	Ref.
Yes	1,783	48.3	181	37.9	0.75	0.60-0.94	0.76	0.60-0.95	1,127	8.7	41	16.4	1.82	1.25-2.64	1.88	1.29-2.72
Unknown	28	0.8	1	0.2	-	-	-	-	8	0.1	-	-	-	-	-	-
<b>Age at primary childhood cancer diagnosis, yr</b>																
<5	769	20.8	25	5.2	1.0	Ref.	1.0	Ref.	6,138	47.2	33	13.2	1.0	Ref.	1.0	Ref.
5-9	699	18.9	23	4.8	0.97	0.51-1.84	0.95	0.50-1.79	2,818	21.7	36	14.4	1.26	0.74-2.13	1.29	0.76-2.17
10-14	1,054	28.5	154	32.2	1.94	1.15-3.29	1.92	1.14-3.25	2,614	20.1	100	40.0	2.17	1.43-3.28	2.24	1.48-3.38
15-21	1,171	31.7	276	57.7	1.85	1.07-3.20	1.86	1.07-3.21	1,434	11.0	81	32.4	1.75	1.12-2.72	1.78	1.14-2.79
<b>CEDe, mg/m<sup>2</sup></b>																
None	1,137	30.8	204	42.7	1.0	Ref.	1.0	Ref.	6,550	50.4	88	35.2	1.0	Ref.	1.0	Ref.
<6000	603	16.3	56	11.7	0.81	0.58-1.14	0.86	0.61-1.21	2,375	18.3	30	12.0	0.93	0.59-1.47	1.06	0.67-1.69
6000-17999	1,123	30.4	114	23.8	0.86	0.66-1.12	0.91	0.71-1.18	2,663	20.5	70	28.0	1.26	0.85-1.86	1.35	0.91-2.00
≥18000	309	8.4	17	3.6	0.68	0.38-1.21	0.66	0.37-1.16	776	6.0	30	12.0	1.92	1.18-3.14	2.15	1.33-3.47
Unknown	521	14.1	87	18.2	-	-	-	-	640	4.9	32	12.8	-	-	-	-

CEDe = Cyclophosphamide Equivalent Dose; CI = Confidence interval; Gy = Gray; HR = Hazard ratio; IQR = Interquartile range; No. = number; SBC = Subsequent breast cancer; TBI = Total Body Irradiation; yr = year

<sup>a</sup>Model II includes continuous variables of cumulative doxorubicin and daunorubicin dose per 100 mg/m<sup>2</sup>.

<sup>b</sup>Cyclophosphamide Equivalent Dose calculation: CEDe (mg/m<sup>2</sup>) = 1.0 (cumulative cyclophosphamide dose (mg/m<sup>2</sup>)) + 0.244 (cumulative ifosfamide dose (mg/m<sup>2</sup>)) + 0.857 (cumulative procarbazine dose (mg/m<sup>2</sup>)) + 14.286 (cumulative chlorambucil dose (mg/m<sup>2</sup>)) + 15.0 (cumulative BCNU (carmustine) dose (mg/m<sup>2</sup>)) + 16.0 (cumulative CCNU (lomustine) dose (mg/m<sup>2</sup>)) + 40 (cumulative melphalan dose (mg/m<sup>2</sup>)) + 50 (cumulative Thio-TEPA (thiotepa) dose (mg/m<sup>2</sup>)) + 100 (cumulative nitrogen mustard dose (mg/m<sup>2</sup>)) + 8.823 (cumulative busulfan dose (mg/m<sup>2</sup>)).

## Reporting Summary

Nature Portfolio wishes to improve the reproducibility of the work that we publish. This form provides structure for consistency and transparency in reporting. For further information on Nature Portfolio policies, see our [Editorial Policies](#) and the [Editorial Policy Checklist](#).

### Statistics

For all statistical analyses, confirm that the following items are present in the figure legend, table legend, main text, or Methods section.

n/a Confirmed

- |                                     |                                     |  |
|-------------------------------------|-------------------------------------|--|
| <input type="checkbox"/>            | <input checked="" type="checkbox"/> | The exact sample size ( $n$ ) for each experimental group/condition, given as a discrete number and unit of measurement  |
| <input checked="" type="checkbox"/> | <input type="checkbox"/>            | A statement on whether measurements were taken from distinct samples or whether the same sample was measured repeatedly  |
| <input type="checkbox"/>            | <input checked="" type="checkbox"/> | The statistical test(s) used AND whether they are one- or two-sided<br><i>Only common tests should be described solely by name; describe more complex techniques in the Methods section.</i>   |
| <input type="checkbox"/>            | <input checked="" type="checkbox"/> | A description of all covariates tested   |
| <input type="checkbox"/>            | <input checked="" type="checkbox"/> | A description of any assumptions or corrections, such as tests of normality and adjustment for multiple comparisons  |
| <input type="checkbox"/>            | <input checked="" type="checkbox"/> | A full description of the statistical parameters including central tendency (e.g. means) or other basic estimates (e.g. regression coefficient) AND variation (e.g. standard deviation) or associated estimates of uncertainty (e.g. confidence intervals) |
| <input type="checkbox"/>            | <input checked="" type="checkbox"/> | For null hypothesis testing, the test statistic (e.g. $F$ , $t$ , $r$ ) with confidence intervals, effect sizes, degrees of freedom and $P$ value noted<br><i>Give <math>P</math> values as exact values whenever suitable.</i>                            |
| <input checked="" type="checkbox"/> | <input type="checkbox"/>            | For Bayesian analysis, information on the choice of priors and Markov chain Monte Carlo settings   |
| <input checked="" type="checkbox"/> | <input type="checkbox"/>            | For hierarchical and complex designs, identification of the appropriate level for tests and full reporting of outcomes   |
| <input checked="" type="checkbox"/> | <input type="checkbox"/>            | Estimates of effect sizes (e.g. Cohen's $d$ , Pearson's $r$ ), indicating how they were calculated   |

Our web collection on [statistics for biologists](#) contains articles on many of the points above.

### Software and code

Policy information about [availability of computer code](#)

Data collection Data formatting was performed by R software (version 4.0.3).

Data analysis All analyses were conducted in R software (version 4.0.3). The statistical code for our main analyses is available at <https://github.com/yuehanwanggitub/IPDanthracyclines.git>.

For manuscripts utilizing custom algorithms or software that are central to the research but not yet described in published literature, software must be made available to editors and reviewers. We strongly encourage code deposition in a community repository (e.g. GitHub). See the Nature Portfolio [guidelines for submitting code & software](#) for further information.

### Data

Policy information about [availability of data](#)

All manuscripts must include a [data availability statement](#). This statement should provide the following information, where applicable:

- Accession codes, unique identifiers, or web links for publicly available datasets
- A description of any restrictions on data availability
- For clinical datasets or third party data, please ensure that the statement adheres to our [policy](#)

The International Consortium for Pooled Studies on Subsequent Malignancies after Childhood and Adolescent Cancer database is not an open-access database due to ethical and data protection constraints. The pseudonymized data is managed by the Princess Máxima Center for Pediatric Oncology in the Netherlands and cannot be shared with investigators outside the institute without consent from all involved parties. However, potential collaborators are welcome to submit

proposals to Dr. Jop Teepen (J.C.Teepen@prinsesmaximacentrum.nl), which will be considered by the consortium. The consortium will come up with a decision about submitted proposals within three months after application. The country-specific female breast cancer rates of the Cancer Incidence in Five Continents database were used as the general female population in our study. These data are publicly available: <https://ci5.iarc.fr/>.

## Human research participants

Policy information about [studies involving human research participants and Sex and Gender in Research](#).

### Reporting on sex and gender

Only female childhood cancer survivors were included in this study because the study outcome was subsequent female breast cancer risk.

### Population characteristics

Specific demographic and treatment characteristics of included female five-year childhood cancer survivors were presented in Table 1, Supplementary Table 1 and 2. Briefly, among the eligible 17,903 five-year survivors, the median age at primary childhood cancer diagnosis was 6.7 years (interquartile range (IQR) 2.8-13.0). In total, 782 survivors developed a first subsequent breast cancer at a median age of 39.7 years (IQR 34.3-44.9), including 616 invasive breast cancer (IBC) and 166 ductal carcinoma in situ (DCIS) cases. The median attained age at the end of follow-up was 33.7 years (IQR 25.9-41.6).

### Recruitment

Data in Europe and North America with available data on radiotherapy cumulative dose and fields and cumulative dose for chemotherapy was collected, including the following six studies: five cohort studies (Childhood Cancer Survivor Study (CCSS), 9,671 women diagnosed in period 1970-1999), St. Jude Lifetime Cohort Study (SJLIFE), 2,236 women diagnosed in period 1962-2012), Dutch Childhood Cancer Survivor Study LATER (DCCSS LATER, 2,237 women diagnosed in period 1963-2001), French Childhood Cancer Survivor Study (FCCSS, 3,415 women diagnosed in period 1943-2000) and Dutch Hodgkin Late Effects cohort (DHL, 265 women diagnosed in period 1965-1995), and one case-cohort study (Swiss Childhood Cancer Survivor Study (SCCSS, 79 women diagnosed in period 1976-2007)) .

### Ethics oversight

This study involves human participants. The contributing cohort study teams obtained institutional review board and/or Ethics Committee approval or exemption in their respective contributing institute. The pooling effort is exempt from review in compliance with Dutch law and regulations for health research involving human beings. Data sharing agreements between the Princess Máxima Center for Pediatric Oncology and all data providers are in place. Written consent was obtained from all patients of the CCSS and the SJLIFE. Specific informed consent for retrospective data collections for selected groups of patients for the DCCSS-LATER, the Dutch Hodgkin Late Effects cohort, the FCCSS and the SCCSS cohorts was waived in accordance with the country's legislation.

Note that full information on the approval of the study protocol must also be provided in the manuscript.

## Field-specific reporting

Please select the one below that is the best fit for your research. If you are not sure, read the appropriate sections before making your selection.

☒ Life sciences ☐ Behavioural & social sciences ☐ Ecological, evolutionary & environmental sciences

For a reference copy of the document with all sections, see [nature.com/documents/nr-reporting-summary-flat.pdf](https://www.nature.com/documents/nr-reporting-summary-flat.pdf)

## Life sciences study design

All studies must disclose on these points even when the disclosure is negative.

### Sample size

Data from five cohort studies (Childhood Cancer Survivor Study (CCSS), St. Jude Lifetime Cohort Study (SJLIFE), Dutch Childhood Cancer Survivor Study LATER (DCCSS LATER), French Childhood Cancer Survivor Study (FCCSS) and Dutch Hodgkin Late Effects cohort (DHL)), and one case-cohort study (Swiss Childhood Cancer Survivor Study (SCCSS)) in Europe and North America with available data on radiotherapy cumulative dose and fields and cumulative dose for chemotherapy was pooled together.

### Data exclusions

Female childhood cancer survivors not meeting the following criteria were excluded in the pooled study: a primary cancer diagnosis at <21 years of age, and survival  $\geq 5$  years from diagnosis.

### Replication

N/A. This study is a pooled analysis of clinical data from various cohort studies. Replication, as in for preclinical work, is therefore not applicable here.

### Randomization

N/A. This study is an observational study; therefore, randomization is not applicable here. Anthracycline-related breast cancer risks were adjusted for other covariates which have been shown or suggested to be associated with breast cancer risk in previous studies, such as chest radiotherapy, pelvic radiotherapy, age at primary cancer diagnosis, and alkylating agents.

### Blinding

Our data were collected from data providers of each included study. No control/placebo arm included in our study, therefore, blinding was not applicable.

## Reporting for specific materials, systems and methods

We require information from authors about some types of materials, experimental systems and methods used in many studies. Here, indicate whether each material, system or method listed is relevant to your study. If you are not sure if a list item applies to your research, read the appropriate section before selecting a response.

Materials & experimental systems

n/a	Involvement in the study
<input checked="" type="checkbox"/>	<input type="checkbox"/> Antibodies
<input checked="" type="checkbox"/>	<input type="checkbox"/> Eukaryotic cell lines
<input checked="" type="checkbox"/>	<input type="checkbox"/> Palaeontology and archaeology
<input checked="" type="checkbox"/>	<input type="checkbox"/> Animals and other organisms
<input checked="" type="checkbox"/>	<input type="checkbox"/> Clinical data
<input checked="" type="checkbox"/>	<input type="checkbox"/> Dual use research of concern

Methods

n/a	Involvement in the study
<input checked="" type="checkbox"/>	<input type="checkbox"/> ChIP-seq
<input checked="" type="checkbox"/>	<input type="checkbox"/> Flow cytometry
<input checked="" type="checkbox"/>	<input type="checkbox"/> MRI-based neuroimaging