

Supplementary data

Bioelectrical impedance analysis (BIA)

BIA measurements were performed while patients were lying on the bed with their arms and legs stretched out. It is difficult to apply touch-type electrodes to ICU patients because of the presence of intravascular lines and the dressing that covers them and so we used adhesive-type electrodes. Eight adhesive electrodes were used: one on the most distal part of the third metacarpal bone of each hand, one on each wrist, one on the most distal part of the second metatarsal bone in each foot, and one on the central part of each ankle. Before pressing the measurement button, manual input of patient information such as age, height, and weight is needed. We used the actual body weight of each patient, which was measured by weighing scales in the ICU bed on the day of their examination.

PTSS-10

The PTSS-10 is a validated screening tool for the detection of PTSD-related symptoms among ICU survivors. Part A consists of four questions concerning memories of traumatic events and feelings while in the ICU, such as nightmares, anxiety or panic, and pain or trouble in breathing. Questions can be answered by yes or no. Part B consists of 10 questions concerning ongoing stress symptoms. Each item is scored from 1 (never) to 7 (always) with a total score range from 10 to 70 points. A score above 34 in PTSS-10, part B, indicates clinically significant post-traumatic stress symptoms and is associated with a diagnosis of PTSD.

HADS

The HADS is a questionnaire consisting of two subscales measuring patients' symptoms of anxiety and depression. Each subscale consists of seven items scored from 0 to 3, resulting in a subscale score range from 0 to 21. A subscale score above 7 suggests clinically significant problems. The questionnaire has been validated in general medical patients and in critically ill patients.

Tables and figures

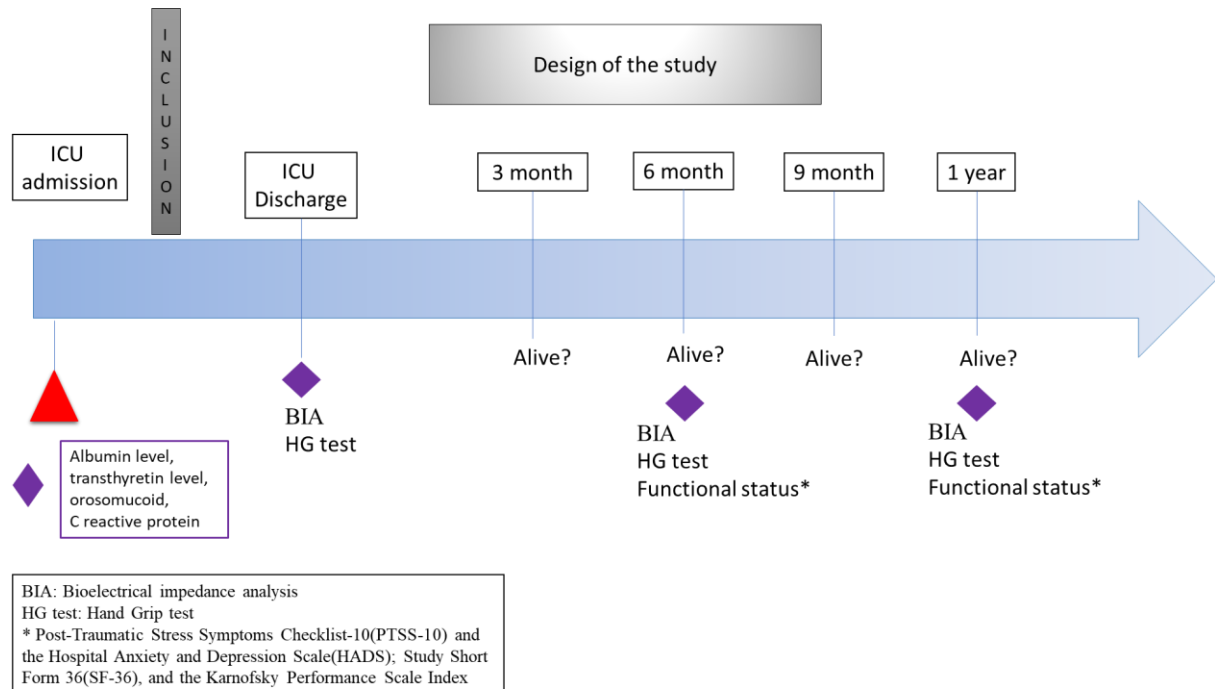


Figure S 1: Design of the study

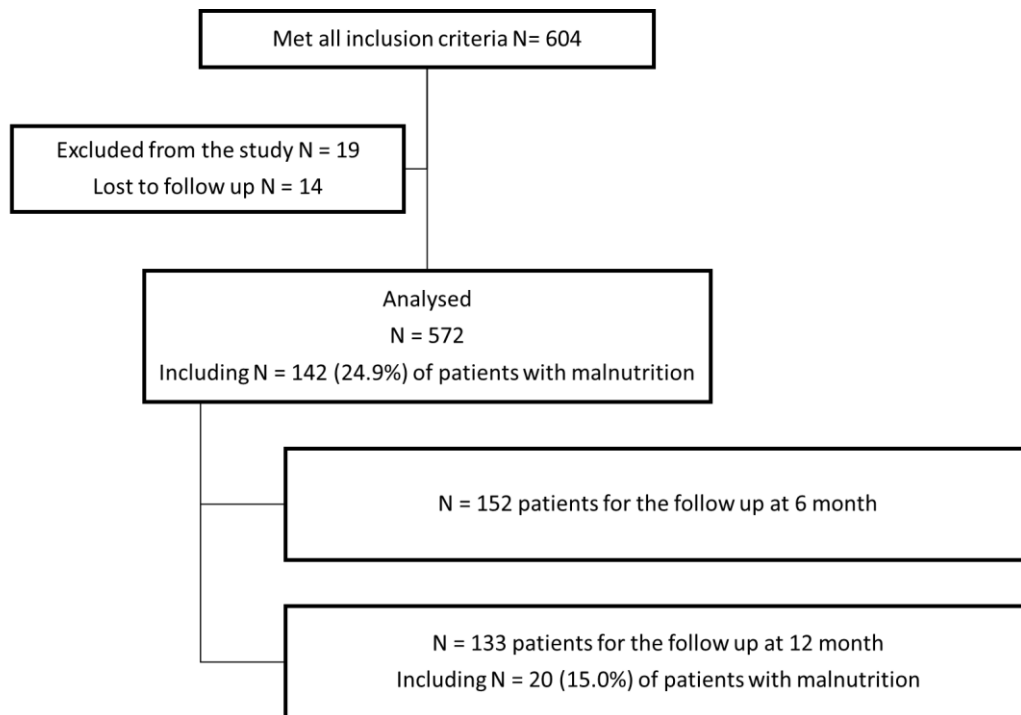


Figure S 2:Flow chart

Table S 1: Indicators from the Handgrip test and BIA according to sex

Indicator (median [IQR])	Male	Female	p-value
Handgrip test - kg (missing=2) *	27 [18 ; 36]	14 [8 ; 20]	<0.01
Fat-free mass index (FFMi) - kg/m²	20.3 [17.9 ; 22.7]	16.6 [14.7 ; 18.9]	<0.01
Appendicular skeletal muscle mass index (aSMi) - kg/m²	8.6 [7.6 ; 10]	6.9 [6 ; 8.6]	<0.01
Phase angle - °	5.3 [4.2 ; 6.6]	4.9 [4 ; 6.5]	0.11
ECW/TBW ratio	0.426 [0.417 ; 0.434]	0.475 [0.459 ; 0.483]	<0.01

ECW/TBW ratio: extracellular water (ECW)/ total body water (TBW)

*19 patients were unable to perform the test and were attributed a 0 kg performance.

Table S 2: Pearson coefficient correlation between indices assessing nutritional status, body composition and physical strength.

Coef cor	Albumin	Trans thyretin	C reactive protein	Handgrip test	FFMI	aSMI	Phase angle	Overload	Malnutrition
Albumin	1	0.28	-0.29	-0.19	-0.01	0.04	-0.14	-0.07	-0.01
Trans thyretin	0.28	1	-0.43	-0.01	0.18	0.19	-0.04	0.01	0.10
C reactive protein	-0.29	-0.43	1	-0.01	-0.02	-0.05	0.06	0.02	0.04
Handgrip test	-0.19	-0.01	-0.01	1	0.16	0.13	0.35	0.3	0.06
FFMI	-0.01	0.18	-0.02	0.16	1	0.64	0.11	0.11	0.57
aSMI	0.04	0.19	-0.05	0.13	0.64	1	0.26	0.21	0.46
Phase angle	-0.14	-0.04	0.06	0.35	0.11	0.26	1	0.51	0.1
Overload	-0.07	0.01	0.02	0.3	0.11	0.21	0.51	1	0

FFMI: fat-free mass index; aSMi: appendicular skeletal muscle mass index
 §Malnutrition according to ESPEN definition 2015 and GLIM definition 2019.

Table S 3: Uni- and multivariate analyses of the factors associated with death at one year after ICU admission.

Variables	Univariate analyses			Multivariate analyses§		
	OR	ORIC	p-value	OR	ORIC	p-value
Age 50 and 60 years	0.98	[0.61 ; 1.54]	0.90	1.00	[0.62 ; 1.64]	0.99
Age 60 and 70 years	1.50	[1.01 ; 2.17]	0.05	1.35	[0.9 ; 2.03]	0.15
Age > 70 yo	2.05	[1.41 ; 2.98]	<0.01	1.58	[1.05 ; 2.37]	0.03
Age < 50 yo	1.000		<0.01	1		<0.01
Sex (female/male)	0.82	[0.65 ; 1.06]	0.13			
BMI > 30 kg/m ²	0.86	[0.67 ; 1.10]	0.23			
Chronic cardiac disease	1.38	[0.99 ; 1.92]	0.06			
Chronic respiratory failure	1.29	[0.94 ; 1.78]	0.12			
Chronic kidney disease	1.46	[1.10 ; 1.93]	<0.01	1.42	[1.04 ; 1.93]	0.03
Diabetes	1.16	[0.91 ; 1.47]	0.23			
Cancer	1.69	[1.32 ; 2.16]	<0.01	1.77	[1.35 ; 2.34]	<0.01
Karnofsky Performance Scale Index < 50%	1.78	[1.23 ; 2.58]	<0.01	0.76	[0.42 ; 1.35]	0.35
Karnofsky Performance Scale Index 50 and 80%	0.76	[0.44 ; 1.30]	0.33	1.61	[1.07 ; 2.42]	0.02
Karnofsky Performance Scale Index > 80%	1			1		<0.01
SAPS II 33 – 44	1.05	[0.73 ; 1.53]	0.74			
SAPS II 44 – 58	0.89	[0.6 ; 1.3]	0.53			
SAPS II > 58	1.41	[0.99 ; 2]	0.07			
SAPS II < 33	1					
SOFA 4 – 6	0.92	[0.61 ; 1.38]	0.88			
SOFA 6 – 9	1.1	[0.80 ; 1.65]	0.59			
SOFA > 9	1.08	[0.78 ; 1.60]	0.68			
SOFA < 4	1					
Treatments during ICU stay						
Steroids	1.12	[0.90 ; 1.41]	0.30			
Blocking agent	1.02	[0.80 ; 1.31]	0.88			
Chemotherapy	1.83	[0.74 ; 4.50]	0.19			
Catecholamines	1.29	[1.01 ; 1.64]	0.04			
Invasive mechanical ventilation	0.80	[0.63 ; 1.01]	0.06			
Sedation	1.00	[0.81 ; 1.26]	0.97			
Renal replacement therapy	1.35	[1.04 ; 1.76]	0.02			
ICU LOS 6 – 9 days	0.99	[0.68 ; 1.43]	0.94			
ICU LOS 9 – 15 days	1.08	[0.74 ; 1.57]	0.69			
ICU LOS >15 days	1.18	[0.81 ; 1.70]	0.39			
ICU LOS < 6 days	1		0.74			
ICU Los > 7 days	1.12	[0.96 ; 1.52]	0.11			
Data recorded at the end of ICU stay						
Albuminemia < 30 g/L	1.52	[1.05 ; 2.22]	0.01			
Transthyretin < 0.2 mg/L	1.21	[0.90 ; 1.64]	0.20			
Orosomuroid > 1.8 mg/L	1.11	[0.82 ; 1.49]	0.51			
C reactive protein > 40 mg/L	1.29	[0.97 ; 1.72]	0.08			
Low handgrip score: < 14 (F) or < 27 (M) - kg	1.72	[1.34 ; 2.21]	<0.01	1.44	[1.1 ; 1.89]	0.01
Bioelectric impedance analysis						
FFMI < 16.5 (F) or < 20 (M) - kg/m ²	1.21	[0.97 ; 1.51]	0.09			
aSMi < 7 (F) or < 8.5 (M) - kg/m ²	1.08	[0.87 ; 1.35]	0.48			
Phase angle < 4.9° (F) or < 5.3° (M)§	1.38	[1.10 ; 1.73]	<0.01			
ECW/TBW < 0.475 (F) or < 0.426 (M)§	1.36	[1.08 ; 1.71]	<0.01			
Malnutrition§§	1.42	[1.11 ; 1.82]	<0.01	1.27	[0.97 ; 1.64]	0.08

§Because of correlation between phase angle and ECW/TBW, only phase angle is tested in multivariate analysis

§§ Malnutrition according to ESPEN definition 2015 and GLIM definition 2019.

BMI: body mass index; SAPS II: simplified acute physiology score; SOFA: sequential organ failure assessment; ICU LOS: intensive care unit length of stay; FFMI: fat-free mass index; aSMi: appendicular skeletal muscle mass index; ECW/TBW ratio: extracellular water (ECW)/total body water (TBW)

Table S 4: Bootstrap sensitivity analyses: association with 1-year mortality, multivariate logistic regression models

Variables	OR	CI OR 95%
Handgrip test*	0.97	[0.94; 0.99]
FFMI*	0.94	[0.86; 1.02]
aSMI*	0.91	[0.76; 1.06]
Phase angle*	0.97	[0.89; 1.02]
ECW/TBW ratio*	2.55	[0.08; 167]
Low handgrip score: 14 (F) or 27 (M) - kg§	1.55	[1.16; 2.17]
FFMI < 16.5 (F) or < 20 (M) - kg/m²§	1.15	[0.86; 1.52]
aSMi < 7 (F) or < 8.5 (M) - kg/m²§	1.08	[0.82; 1.41]
Phase angle < 4.9° (F) or < 5.3° (M)§	1.18	[0.88; 1.57]
ECW/TBM > 0.475 (F) or > 0.426 (M)§	1.22	[0.94; 1.66]
Malnutrition§-§§	1.37	[0.99; 1.83]
Albuminemia < 30 g/L§	1.39	[1.02 ; 1.99]
Trans thyretin < 0.2 mg/L§	0.89	[0.67 ; 1.20]
Orosomucoid > 2 mg/L§	1.17	[0.88 ; 1.56]
C reactive protein > 40 mg/L§	1.09	[0.85; 1.47]
Model 1**		
Age 50 and 60 years	1.07	[0.56; 2.31]
Age 60 and 70 years	1.39	[0.82; 2.84]
Age > 70 years	1.65	[0.98; 3.47]
Age < 50 years	1	
Chronic kidney disease	1.47	[1.04; 2.14]
Cancer	1.77	[1.25; 2.48]
Karnofsky score 50 and 80%	0.65	[0.34; 1.20]
Karnofsky score < 50%	1.59	[1.06; 2.76]
Karnofsky score > 80%	1	
Low handgrip score: < 14 (F) or < 27 (M) - kg	1.46	[1.08; 2.11]
Malnutrition	1.30	[0.90; 1.77]
Model 2**		
Age 50 and 60 years	1.07	[0.54; 1.91]
Age 60 and 70 years	1.42	[0.84; 2.58]
Age > 70 years	1.99	[1.21; 3.77]
Age < 50 years	1	
Albuminemia < 30 g/L	1.42	[1.04; 2.06]
Malnutrition	1.42	[1.01; 1.91]

FFMi: fat-free mass index; aSMi: appendicular skeletal muscle mass index

* In all analyses, variables are considered linearly and adjusted for age and sex.

§Adjustment for age.

§§Malnutrition according to ESPEN definition 2015 and GLIM definition 2019.

** Multivariate logistic regression analyses

The estimates were obtained with bootstrapping based on 1000 datasets of 400 patients obtained from the first imputed dataset of the original dataset.

Table S 5: Characteristics at baseline and at the end of ICU stay and outcomes depending on NUFID score

Characteristics (n(%) or median[IQR])	Score [0 - 1]	Score [2-3]	Score \geq 4	P-value
Number of patients	138	397	37	.
Age – years	47.7 [36.5 ; 57.6]	65.8 [58.1 ; 72.7]	73.9 [65.7 ; 77.8]	<0.01
Sex (Female)	39 (28.3)	140 (35.3)	14 (37.8)	0.28
Body mass index - kg/m²	27.1 [23.4 ; 33.2]	27 [23.3 ; 31.4]	20.9 [19.5 ; 22.8]	<0.01
Chronic kidney disease	11 (8)	59 (14.9)	6 (16.2)	0.11
Chronic respiratory failure	9 (6.5)	41 (10.3)	7 (18.9)	0.08
Chronic cardiac disease	4 (2.9)	44 (11.1)	7 (18.9)	<0.01
Diabetes	19 (13.8)	131 (33)	3 (8.1)	<0.01
Cancer	9 (6.5)	87 (21.9)	10 (27)	<0.01
No comorbidities	85 (61.6)	116 (29.2)	10 (27)	<0.01
Karnofsky Performance Scale Index < 50%	72 (52.2)	143 (36)	15 (40.5)	<0.01
Karnofsky Performance Scale Index 50 and 80%	32 (23.2)	74 (18.6)	5 (13.5)	.
Karnofsky Performance Scale Index > 80%	34 (24.6)	180 (45.3)	17 (45.9)	.
SAPS II	28 [17 ; 39]	33 [4 ; 44]	28 [4 ; 43]	0.46
SOFA	6 [4 ; 8]	7 [4 ; 9]	7 [4 ; 10]	0.04
Treatment during ICU stay				
Steroids	39 (28.3)	137 (34.5)	13 (35.1)	0.39
Blocking agent	31 (22.5)	112 (28.2)	8 (21.6)	0.33
Catecholamines	76 (55.1)	262 (66)	26 (70.3)	0.05
Invasive mechanical ventilation	104 (75.4)	302 (76.1)	24 (64.9)	0.32
Renal replacement therapy	17 (12.3)	73 (18.4)	8 (21.6)	0.20
Albuminemia - g/L	32.4 [30 ; 36]	26.3 [22.5 ; 29.9]	25 [23 ; 27.2]	<0.01
Transthyretin - mg/L	0.2 [0.2 ; 0.3]	0.2 [0.1 ; 0.3]	0.1 [0.1 ; 0.2]	<0.01
Low handgrip score < 14 (F) or < 27 (M) – kg	13 (9.4)	261 (65.7)	37 (100)	<0.01
FFMI < 16.5 (F) or < 20 (M) - kg/m²	40 (29)	192 (48.4)	37 (100)	<0.01
aSMi < 7 (F) or < 8.5 (M) - kg/m²	52 (37.7)	185 (46.6)	30 (81.1)	<0.01
ECW/TBW > 0.475 (F) or > 0.426 (M)	35 (25.4)	213 (53.7)	20 (54.1)	<0.01
Phase angle < 4.9° (F) or < 5.3° (M)	28 (20.3)	222 (55.9)	26 (70.3)	<0.01
Malnutrition §	4 (2.9)	84 (21.2)	37 (100)	<0.01
ICU LOS - days	9 [6 ; 13]	9 [6 ; 16]	10 [7 ; 12]	0.52
Death at one year	4 (2.9)	75 (18.9)	17 (45.9)	<0.01
Nutritional and functional assessment at one year	41 (29.7)	89 (22.4)	3 (8.1)	0.02

NUFID score: nutritional and functional status at ICU discharge score; SAPS II: simplified acute physiology score; SOFA: sequential organ failure assessment; ICU LOS: intensive care unit length of stay; FFMI: fat-free mass index; aSMi: appendicular skeletal muscle mass index; ECW/TBW ratio: extracellular water (ECW)/ total body water (TBW)

§Malnutrition according to ESPEN definition 2015 and GLIM definition 2019.

Table S 6: Functional assessment at one year depending on NUFID score.

Nutritional and functional assessment at one year	Score [0 - 1]	Score [2-3]	Score \geq 4	P-value
Number of patients	41	89	3	0.02
PTSD (y/n) (missing=17)	14 (41.2)	19 (24.1)	2 (66.7)	0.07
HAD A > 40(missing =3)	22 (56.4)	32 (36.4)	2 (66.7)	0.08
HAD D > 40(missing =3)	14 (35)	17 (19.5)	1 (33.3)	0.16
SF-36 PCS < 50	28 (68.3)	77 (86.5)	3 (100)	0.03
SF-36 MCS < 50	23 (56.1)	41 (46.1)	1 (33.3)	0.49
Body mass index - kg/m²	28.4 [23 ; 31.8]	27.3 [23.1 ; 31.3]	20.5 [18 ; 21.8]	0.05
FFMI < 16.5 (F) or < 20 (M) - kg/m²	7 (17.9)	30 (34.5)	3 (100)	<0.01
Low handgrip score: < 14 (F) or < 27 (M) (missing=1)	4 (9.8)	12 (13.5)	0	0.72
aSMi < 7 (F) or < 8.5 (M) - kg/m² (missing =35)	14 (48.3)	31 (47)	3 (100)	0.20
ECW/TBM > 0.475 (F) or > 0.426 (M) (missing =8)	9 (24.3)	35 (41.2)	2 (66.7)	0.12
Phase angle < 4.9° (F) or < 5.3° (M) (missing =35)	2 (6.9)	12 (18.2)	2 (66.7)	0.02
Malnutrition§	7 (17.1)	19 (21.3)	3 (100)	<0.01

NUFID score: Nutritional and Functional status at ICU Discharge score; PTSD: Post-Traumatic Stress Symptoms; HADS: Hospital Anxiety and Depression Scale ; FFMI: Fat-free mass index; aSMi: Appendicular skeletal muscle mass index; ECW/TBW ratio: extracellular water (ECW)/ total body water (TBW)

§Malnutrition according to ESPEN definition 2015 and GLIM definition 2019.

Table S 7: Characteristics at baseline, the end of ICU stay and outcomes depending on hypoalbuminemia, hand grip score and malnutrition at the end of ICU stay

Characteristics	No	Hypoalbu	Malnutrition	Low HG	Low HG Hypoalbu	Hypoalbu Malnut	Malnut Low HG	All	P-value
Number of patients	97	121	19	59	170	24	24	58	.
Score	0.5 [0 ; 1]	1.5 [1 ; 2]	2 [1.5 ; 2]	1.5 [1.5 ; 2]	3 [3 ; 3.5]	3 [2.3 ; 3]	3 [2.5 ; 3.5]	4 [3.5 ; 4.5]	<0.01
Score [0 ; 1]	86 (88.7)	35 (28.9)	4 (21.1)	13 (22)	0(0)	0(0)	0(0)	0(0)	<0.01
Score [1 ; 3]	11 (11.3)	86 (71.1)	15 (78.9)	46 (78)	170 (100)	24 (100)	24 (100)	21 (36.2)	.
Score ≥ 3	0(0)	0(0)	0(0)	0(0)	0(0)	0(0)	0(0)	37 (63.8)	
Age - years	57.2 [47.5 ; 65.7]	58.8 [47.7 ; 66.6]	61.9 [51.1 ; 68.3]	59.8 [51.1 ; 69.8]	67.9 [60.7 ; 76]	63 [51.1 ; 68.5]	69 [57.8 ; 73.5]	65 [57.8 ; 75.1]	<0.01
Sex (Female)	29 (29.9)	34 (28.1)	8 (42.1)	18 (30.5)	57 (33.5)	12 (50)	13 (54.2)	22 (37.9)	0.14
Body Mass Index - kg/m ²	29 [24.4 ; 34.5]	28.1 [24.9 ; 32.4]	20.5 [18.4 ; 22.7]	29.2 [26.1 ; 35.2]	28 [24.9 ; 32]	19.9 [18.1 ; 22.4]	21.3 [19.7 ; 23.1]	20.1 [18.9 ; 22.5]	<0.01
Chronic kidney disease	7 (7.2)	16 (13.2)	1 (5.3)	4 (6.8)	31 (18.2)	2 (8.3)	7 (29.2)	8 (13.8)	0.03
Chronic respiratory failure	10 (10.3)	11 (9.1)	3 (15.8)	6 (10.2)	15 (8.8)	2 (8.3)	1 (4.2)	9 (15.5)	0.77
Chronic cardiac disease	9 (9.3)	8 (6.6)	0	8 (13.6)	19 (11.2)	2 (8.3)	1 (4.2)	8 (13.8)	0.44
Diabetes	22 (22.7)	33 (27.3)	1 (5.3)	24 (40.7)	59 (34.7)	4 (16.7)	4 (16.7)	6 (10.3)	<0.01
Cancer	7 (7.2)	27 (22.3)	3 (15.8)	5 (8.5)	32 (18.8)	9 (37.5)	7 (29.2)	16 (27.6)	<0.01
No comorbidities	54 (55.7)	47 (38.8)	9 (47.4)	19 (32.2)	56 (32.9)	4 (16.7)	4 (16.7)	18 (31)	<0.01
Karnofsky Performance Scale Index < 50%	41 (42.3)	67 (55.4)	6 (31.6)	19 (32.2)	59 (34.7)	7 (29.2)	8 (33.3)	23 (39.7)	<0.01
Karnofsky Performance Scale Index 50 and 80%	26 (26.8)	21 (17.4)	6 (31.6)	14 (23.7)	25 (14.7)	7 (29.2)	4 (16.7)	8 (13.8)	.
Karnofsky Performance Scale Index > 80%	30 (30.9)	33 (27.3)	7 (36.8)	26 (44.1)	86 (50.6)	10 (41.7)	12 (50)	27 (46.6)	.
SAPS II	30 [19 ; 42]	32 [14 ; 43]	31 [14 ; 49]	33 [4 ; 44]	29.5 [4 ; 41]	35 [20.5 ; 44]	38.5 [31 ; 50]	31 [4 ; 43]	0.26
SOFA	5 [3 ; 8]	7 [4 ; 9]	3 [3 ; 6]	7 [5 ; 9.1]	7 [5 ; 10]	4 [3 ; 8]	5 [3.5 ; 8]	7 [4 ; 9.1]	<0.01
Treatment during ICU stay									
Steroids	29 (29.9)	35 (28.9)	7 (36.8)	25 (42.4)	59 (34.7)	5 (20.8)	8 (33.3)	21 (36.2)	0.55
Blocking agent	23 (23.7)	21 (17.4)	4 (21.1)	21 (35.6)	54 (31.8)	4 (16.7)	6 (25)	18 (31)	0.08
Catecholamines	52 (53.6)	76 (62.8)	5 (26.3)	39 (66.1)	124 (72.9)	11 (45.8)	14 (58.3)	43 (74.1)	<0.01
Invasive mechanical ventilation	76 (78.4)	84 (69.4)	15 (78.9)	47 (79.7)	132 (77.6)	19 (79.2)	16 (66.7)	41 (70.7)	0.57
Renal replacement therapy	7 (7.2)	16 (13.2)	4 (21.1)	10 (16.9)	39 (22.9)	1 (4.2)	7 (29.2)	14 (24.1)	<0.01
Albuminemia – g/L	33.8 [32 ; 37]	25.7 [22 ; 27.9]	34.7 [32.1 ; 37.8]	32.1 [31.1 ; 35.6]	24.6 [21.6 ; 27.5]	24.5 [21.2 ; 28.1]	32 [31 ; 34.7]	23.8 [21.5 ; 27]	<0.01
Transthyretin – mg/L	0.2 [0.2 ; 0.3]	0.2 [0.1 ; 0.2]	0.3 [0.2 ; 0.3]	0.2 [0.2 ; 0.3]	0.2 [0.1 ; 0.2]	0.2 [0.1 ; 0.2]	0.2 [0.2 ; 0.3]	0.2 [0.1 ; 0.2]	<0.01
FFMI < 16.5 (F) or < 20 (M) - kg/m ²	28 (28.9)	29 (24)	18 (94.7)	23 (39)	66 (38.8)	23 (95.8)	24 (100)	58 (100)	<0.01
aSMi < 7 (F) or < 8.5 (M) - kg/m ²	32 (33)	32 (26.4)	17 (89.5)	28 (47.5)	69 (40.6)	22 (91.7)	20 (83.3)	47 (81)	<0.01
ECW/TBM > 0.475 (F) or > 0.426 (M)	27 (27.8)	43 (35.5)	6 (31.6)	37 (62.7)	96 (56.5)	8 (33.3)	15 (62.5)	36 (62.1)	<0.01
Phase angle < 4.9° (F) or < 5.3° (M)	19 (19.6)	41 (33.9)	7 (36.8)	29 (49.2)	110 (64.7)	10 (41.7)	17 (70.8)	43 (74.1)	<0.01
ICU LOS – days	9 [5 ; 13]	8 [6 ; 10]	6 [6 ; 9]	13 [7 ; 23]	10 [6 ; 19]	7 [5 ; 9.5]	12.5 [7 ; 25]	10.5 [7 ; 20]	<0.01
Death at one year	4 (4.1)	15 (12.4)	2 (10.5)	9 (15.3)	36 (21.2)	3 (12.5)	3 (12.5)	24 (41.4)	<0.01
Nutritional and functional assessment at one year	36 (37.1)	34 (28.1)	6 (31.6)	13 (22)	30 (17.6)	5 (20.8)	1 (4.2)	8 (13.8)	<0.01

Hypo: hypoalbuminemia; SAPS II: simplified acute physiology score; SOFA: Sequential Organ Failure Assessment; ICU LOS: intensive care unit length of stay; FFMI: Fat-free mass index; aSMi: Appendicular skeletal muscle mass index; ECW/TBW ratio: extracellular water (ECW)/ total body water (TBW).

Table S 8: Functional assessment at one year depending on hypoalbuminemia, hand grip score and malnutrition.

Characteristics	No	Hypoalbu	Malnutrition	Low HG	Low HG Hypoalb	Hyoalb Malnut	Malnut Low HG	All	P-value
Number of patients	36	34	6	13	30	5	1	8	<0.01
PTSD (y/n)(miss=17)	10 (32.3)	7 (21.9)	2 (33.3)	5 (50)	8 (33.3)	0	1 (100)	2 (28.6)	0.37
HAD A > 40(miss=3)	17 (48.6)	14 (42.4)	2 (33.3)	7 (53.8)	10 (34.5)	3 (60)	0	3 (37.5)	0.83
HAD D > 40(miss=3)	11 (31.4)	8 (23.5)	1 (16.7)	6 (46.2)	4 (13.8)	1 (25)	0	1 (12.5)	0.41
SF-36 PCS < 50	26 (72.2)	28 (82.4)	4 (66.7)	12 (92.3)	27 (90)	4 (80)	0	7 (87.5)	0.20
SF-36 MCS < 50	20 (55.6)	16 (47.1)	4 (66.7)	10 (76.9)	10 (33.3)	1 (20)	1 (100)	3 (37.5)	0.116
Body mass index - kg/m²	30.8 [24.6 ; 33.4]	27.5 [24.8 ; 30.1]	22.9 [18.2 ; 26.4]	29.9 [26.4 ; 34.5]	26.9 [23.1 ; 30.9]	20.1 [18.2 ; 23.5]	22.7 [22.7 ; 22.7]	20.1 [17.8 ; 21.8]	<0.01
FFMI < 16.5 (F) or < 20 (M) - kg/m²	6 (17.1)	6 (18.2)	4 (80)	4 (30.8)	9 (30)	5 (100)	1 (100)	5 (71.4)	<0.01
Low handgrip score: < 14 (F) or < 27 (M) (miss=1)	3 (8.3)	0	1 (16.7)	6 (46.2)	4 (13.3)	0	0	2 (28.6)	<0.01
aSMi < 7 (F) or < 8.5 (M) - kg/m² (miss=35)	12 (42.9)	11 (40.7)	3 (100)	4 (50)	8 (38.1)	5 (100)	1 (100)	4 (80)	0.06
ECW/TBW > 0.475 (F) or > 0.426 (M) (miss=8)	9 (27.3)	8 (25)	3 (60)	2 (16.7)	17 (56.7)	4 (80)	0	3 (42.9)	0.02
Phase angle < 4.9° (F) or < 5.3° (M) (miss=35)	3 (10.7)	3 (11.1)	2 (66.7)	1 (12.5)	3 (14.3)	2 (40)	0	2 (40)	0.13
Malnutrition§	6 (16.7)	1 (2.9)	5 (83.3)	1 (7.7)	5 (16.7)	4 (80)	1 (100)	6 (75)	<0.01

Hypo: hypoalbuminemia; PTSD: Post-Traumatic Stress Symptoms; HADS: Hospital Anxiety and Depression Scale; FFMI: Fat-free mass index; aSMi: Appendicular skeletal muscle mass index; ECW/TBW ratio: extracellular water (ECW)/ total body water (TBW).

§Malnutrition according to ESPEN definition 2015 and GLIM definition 2019.