



HAL
open science

Metal hoards in a ritual space? the Atlantic Middle Bronze Age site of Kerouarn, Prat (Côtes-d'Armor, France)

Marilou Nordez

► **To cite this version:**

Marilou Nordez. Metal hoards in a ritual space? the Atlantic Middle Bronze Age site of Kerouarn, Prat (Côtes-d'Armor, France). *Antiquity*, 2023, 97 (394), pp.e23. 10.15184/aqy.2023.92 . hal-04226727

HAL Id: hal-04226727

<https://hal.science/hal-04226727>

Submitted on 3 Oct 2023

HAL is a multi-disciplinary open access archive for the deposit and dissemination of scientific research documents, whether they are published or not. The documents may come from teaching and research institutions in France or abroad, or from public or private research centers.

L'archive ouverte pluridisciplinaire **HAL**, est destinée au dépôt et à la diffusion de documents scientifiques de niveau recherche, publiés ou non, émanant des établissements d'enseignement et de recherche français ou étrangers, des laboratoires publics ou privés.




Distributed under a Creative Commons Attribution - NonCommercial - NoDerivatives 4.0 International License



Project Gallery

Metal hoards in a ritual space? The Atlantic Middle Bronze Age site of Kerouarn, Prat (Côtes-d'Armor, France)

Marilou Nordez^{1,2,*} 

¹ CREAAH – Laboratoire Archéosciences, Campus de Beaulieu, Bâtiment Rennes, Bretagne, France

² TRACES – Université Toulouse-Jean Jaurès Maison de la Recherche, Toulouse, Occitanie, France

* Author for correspondence ✉ marilou.nordez@gmail.com

Geophysical prospection and archaeological excavation are helping to contextualise a group of Middle Bronze Age metalwork hoards in Brittany. At Kerouarn, three hoards with a total of 89 bracelets were found buried in a semi-circular enclosure with a monumental entrance, bounded by two deep ditches and their associated embankments. No domestic or funerary remains were discovered.

Keywords: Ornaments, Hoards, Brittany, Atlantic Middle Bronze Age

Introduction

In April 2021, 59 bronze bracelets from two hoards dating to the Atlantic Middle Bronze Age 2 (AMBA 2, 1450–1300 BC) were extracted by a detectorist at Kerouarn, Prat, in northern Brittany. The archaeological context and the bracelets were partly destroyed, but the Regional Archaeology Service of Brittany prescribed a contextualising study of these hoards to save the remaining information, coordinated by the author. After a magnetic and electromagnetic survey (B. Fores, Inrap), two excavations were carried out in 2021 (Nordez 2022) and 2022 (Nordez unpublished data): 67 features were recorded over an area of 1500m² (Figure 1). Many hoards were deposited in north-western France over this period, mainly made up of palstaves and/or ornaments (Boulud-Gazo *et al.* 2017; O'Connor *et al.* 2017).

Three bracelet hoards

These excavations made it possible to demonstrate that the bracelets, which were complete before the detectorist's intervention, came from two distinct hoards (Figure 2A & 2B), at least one of which had originally been placed in a ceramic vessel (Figure 2A).

During the excavation, a third intact hoard was discovered, made up of 30 bracelets in a vessel with a lid, both ceramic. Field observations revealed that the vessel had been inside a now-lost organic bag, which had held the bracelets against the vessel when it

Received: 4 December 2022; Revised: 14 April 2023; Accepted: 17 April 2023

© The Author(s), 2023. Published by Cambridge University Press on behalf of Antiquity Publications Ltd. This is an Open Access article, distributed under the terms of the Creative Commons Attribution-NonCommercial-NoDerivatives licence (<https://creativecommons.org/licenses/by-nc-nd/4.0/>), which permits non-commercial re-use, distribution, and reproduction in any medium, provided the original work is unaltered and is properly cited. The written permission of Cambridge University Press must be obtained for commercial re-use or in order to create a derivative work.

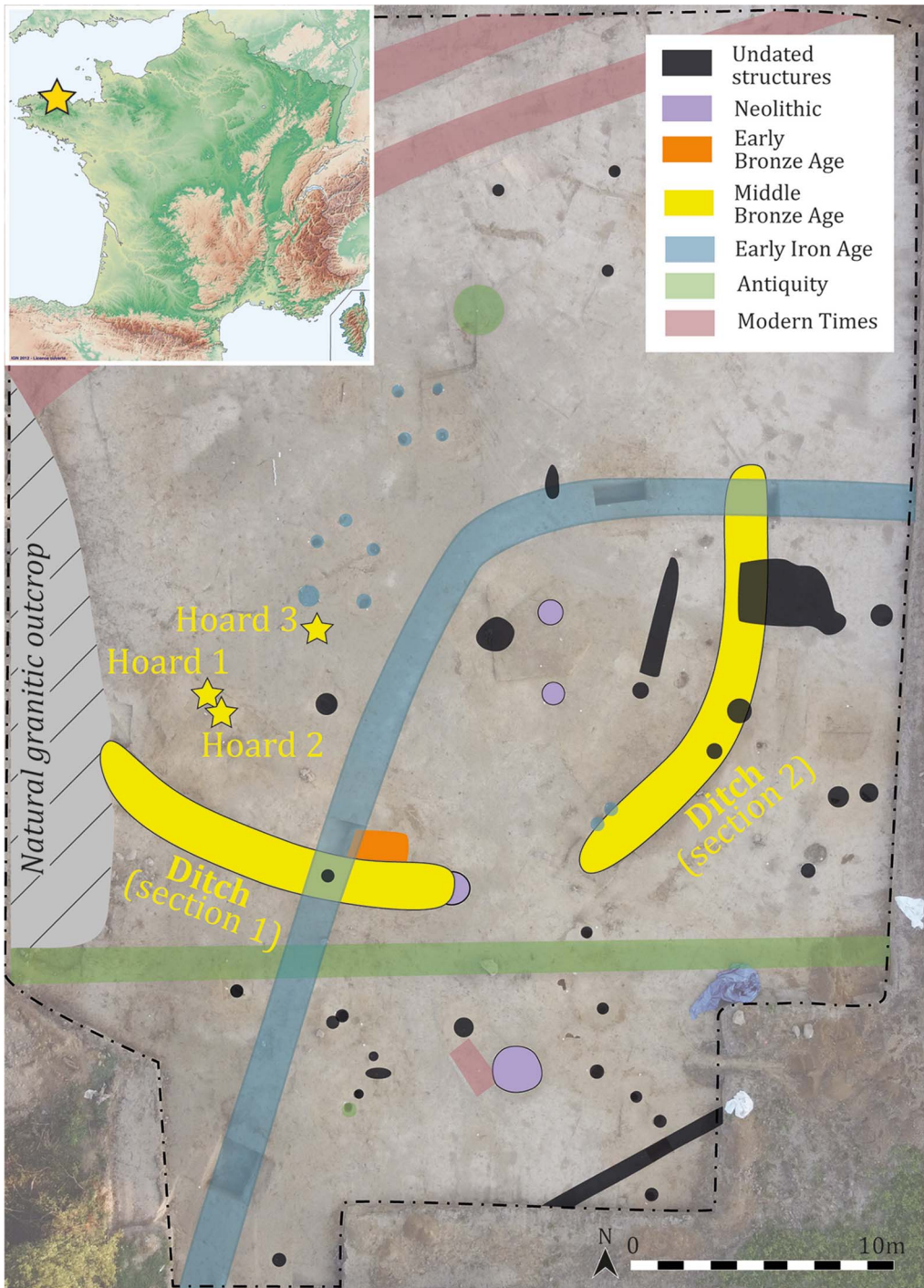


Figure 1. Location of the site and zenithal view, with preliminary phasing of the 67 features (drone photograph by M. Vallée, CAD by M. Nordez).

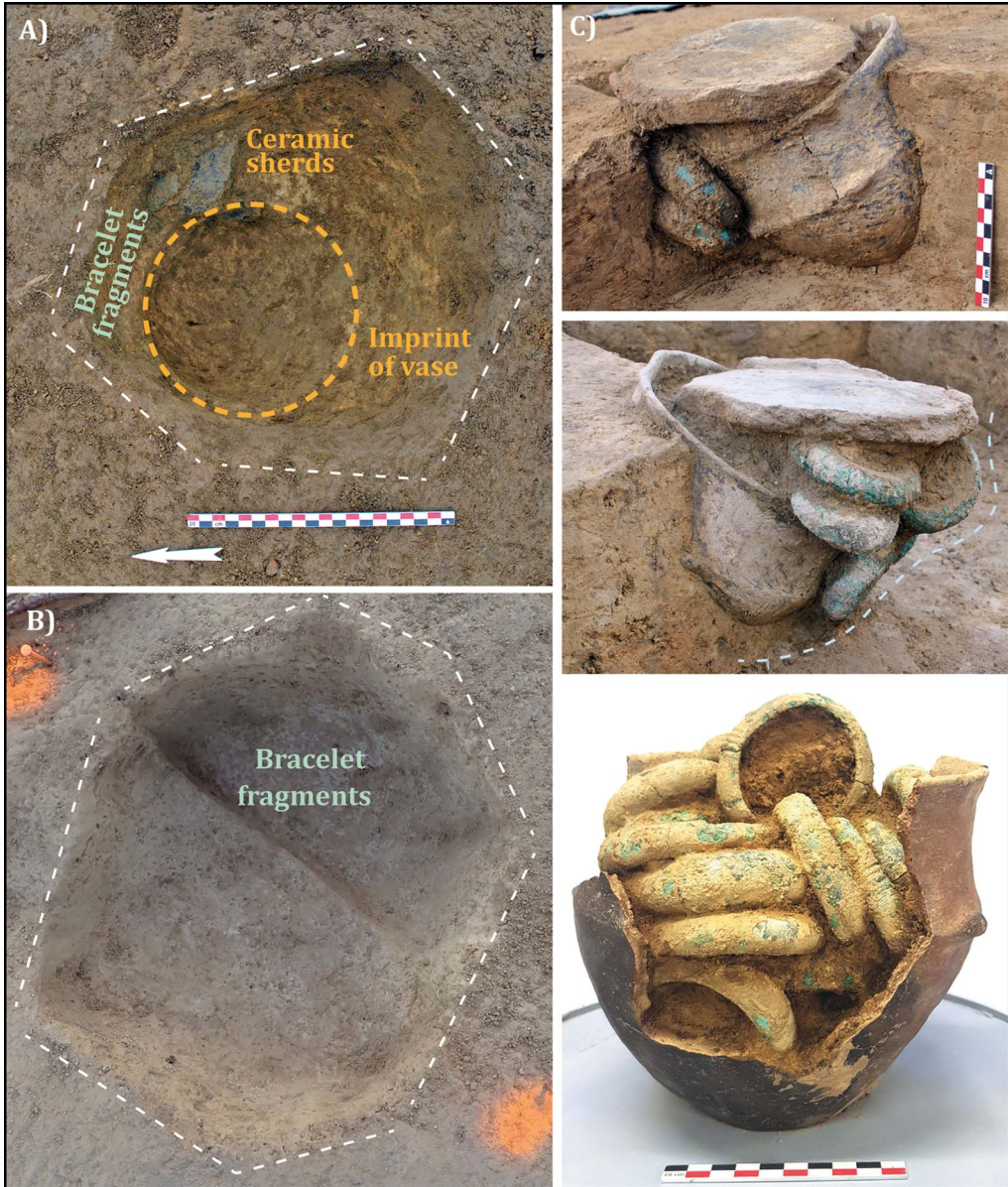


Figure 2. A) & B) Pits dug by the detectorist to extract hoards 1 and 2 (photographs by M. Mélin & I. Le Mée, CAD by M. Nordez); C) Hoard 3 still in situ, perhaps in a textile container (photographs by M. Nordez).

was deposited and tipped over. The vessel was removed as a block and excavated in the Arc'Antique laboratory in Nantes, showing that the bracelets were organised in horizontal and vertical stacks (Figure 2C). To date, the site of Kerouarn has yielded the largest number of bracelets (at least 89) and the largest mass of ornaments (15kg) of the Atlantic Middle Bronze Age.

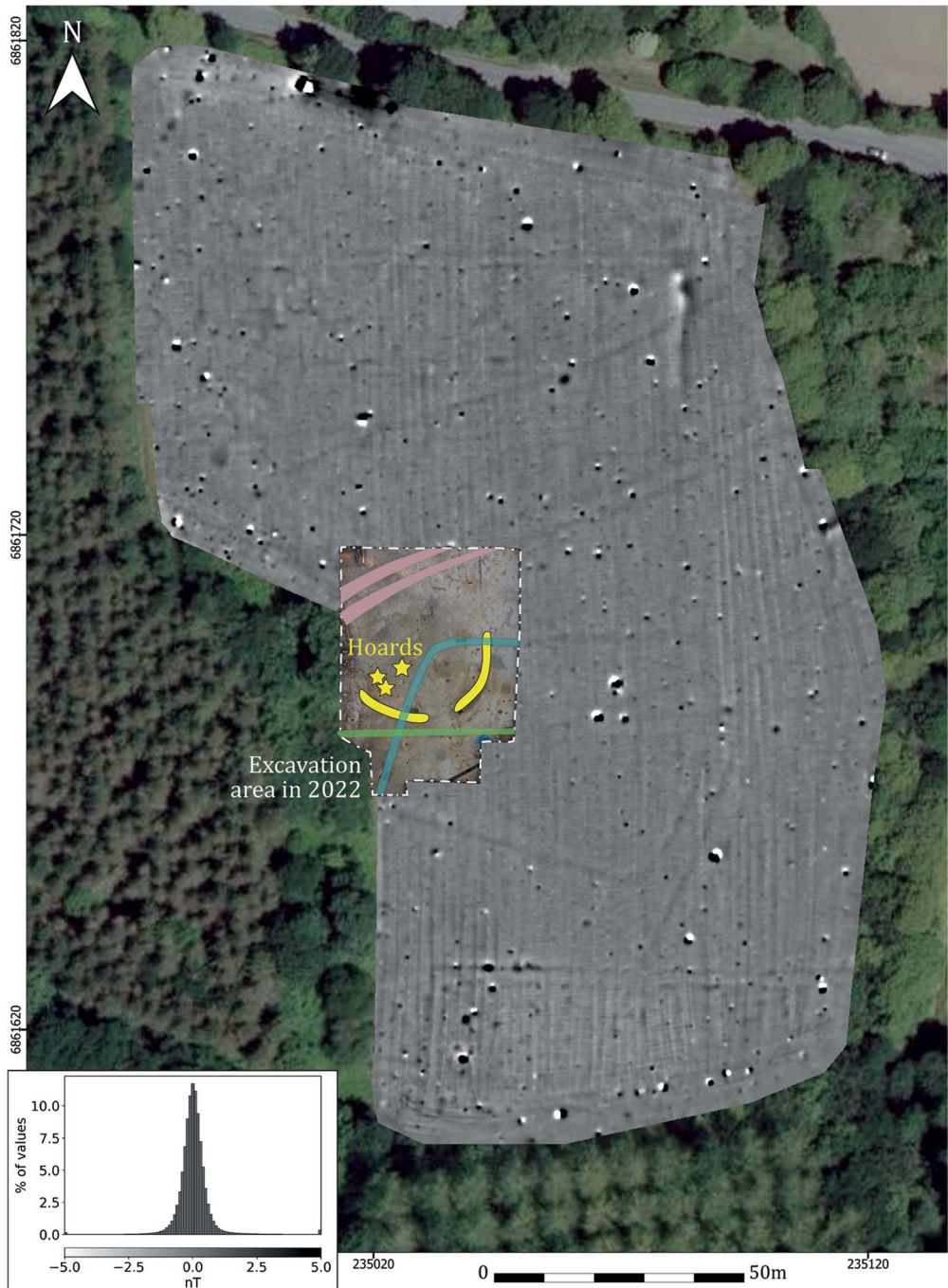


Figure 3. Mapping of magnetic anomalies (by B. Fores, Inrap) and main ditches excavated (CAD by M. Nordez).

A semi-circular monumentalised space

Magnetic surveys (Figure 3) and excavations showed that the three hoards were deposited in a 26m-wide semi-circular area delimited by two curved ditches (Figure 1). Pottery analysis and a radiocarbon date on charcoal (CIRAM-3139: 3087 ± 27 BP, 1421–1272 cal BC at 95.4%; date modelled in OxCal v.4.4.4, using IntCal20 calibration curve (Bronk Ramsey 2021; Reimer *et al.* 2020)) indicates that the ditches and hoards were contemporary. Ditch segment 1 lies against a (now) rather low granitic outcrop in the west, but there is no

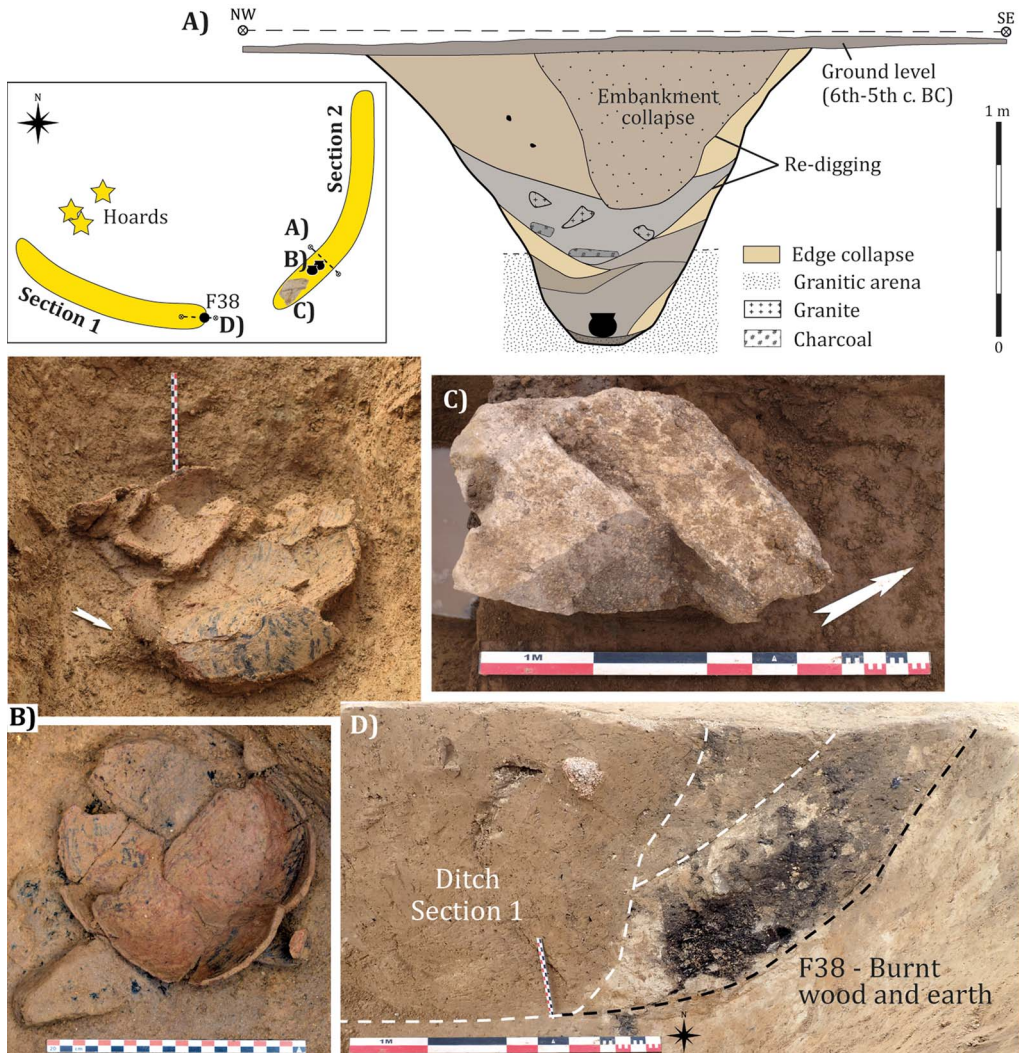


Figure 4. A) Transverse section of the ditch showing the main fill sequence (CAD by M. Nordez); B) vessels deposited at the bottom of the ditch, near the entrance (photographs by A. Maguy & M. Perrin); C) large broken granite block (possible stele fragment?) (photograph by R. Castillo Latorre); D) end of ditch 1 intersecting an older feature, containing burnt wood and sediment (post?) (photograph by G. Daniel, CAD by M. Nordez).

indication that this area was closed to the north. The ditch may have been extended by now-lost structures (e.g. hedge or fence line), or it may have adjoined a natural barrier (e.g. trees or now-eroded hillside).

The two ditch segments, which are preserved to a depth of 1.5m, are associated with an embankment (Figure 4A). The ends are rounded with steep sides, and create a 5m-wide opening. This access from the south must have appeared rather imposing and several elements point to its importance: two ceramic vessels were deposited side by side at the base of ditch segment 2 (Figure 4B), and fragments of a large block of worked granite were found in the upper fill, perhaps indicating the presence of a stele beside the entrance (Figure 4C). In its final phase, ditch section 1 cut through a large hole containing burnt wood and earth. Radiocarbon dates on two charcoal samples indicate that this feature dates to the Middle Neolithic 2 (CIRAM-5186: 5207±30 BP and CIRAM-5745: 5220 ±30 BP, 4054–3958 cal BC, at 90.8% confidence and 4061–3961 cal BC, at 83.4% confidence; date modelled in OxCal v.4.4.4, using IntCal20 calibration curve (Bronk Ramsey 2021; Reimer *et al.* 2020)) (Figure 4D).

The ditch had been repeatedly maintained, and re-dug several times (Figure 4A), but ceramics found in the lower and upper fills are all attributed to the AMBA 2, so it was in use for no more than 150 years.

A communal space? A sacred place?

Geophysical prospections brought to light other features in the area around the hoards, but all are more recent (Figure 3). The only features attributed to the Middle Bronze Age are the two



Figure 5. Main types of bracelets (photographs by M. Nordez): A) Prat type, with variation in the number of terminal bulges; B) unique open bracelet from the hoards; C) cast residues trapped in the internal side of a locking system.

ditch segments and the three ornament hoards. There are no contemporary built structures in this 225m² semi-circular area and this absence cannot be explained by erosion. This lack of domestic or funerary remains, in combination with the monumentality of this complex, suggests other functions. This partially enclosed (and possibly hidden) place may have been used to bring people together, possibly for ritual, religious and/or socioeconomic purposes. The hoards may either be the cause of these gatherings or a visible consequence, possibly among others that left no trace.

Three exceptional sets of bracelets

The 89 bracelets constituting the three hoards all have a massive plano-convex or concave-convex section and are decorated with a finely crafted geometric motif. The majority (81) have a closed shape with bulges hiding the ends (Figure 5A)—very rare characteristics that led us to define them as the ‘Prat’ type, although the typology of AMBA ornaments has



Figure 6. The most massive bracelet, with hinged locking system (photographs by M. Nordez; tomography by G. Bourbouze).

recently been updated (Nordez 2019). Only one bracelet is penannular (Figure 5B). Seven others have a mortise-and-tenon locking system, sometimes hinged (Figures 5C & 6). The most complex example is particularly massive (600g, Figure 6).

Technical markers (dendritic surfaces, casting flaws intersecting the decorations, repairs by secondary casting, etc.) indicate that all the bracelets were made using the lost wax casting technique, like most bracelets of this period (Nordez 2019: 219–22). The quantity and exceptional quality of the bracelets, the fact that they were buried in a vessel and the diverse stages of manufacture and wear (unfinished to very worn) raise the question of the function of these objects. Were they intended to be worn? Are they only ornaments or are they, rather, some form of pre-monetary currency?

Conclusion and further perspectives

Hoardings are no longer considered merely in terms of the objects they comprise but must be understood with reference to their contexts—including the conditions of deposition—and analysed in relation to the site and landscape within which they were deposited. One of the primary results of the Kerouarn project is that it demonstrates the importance of geophysical studies coupled with excavations in understanding metalwork hoards in their archaeological contexts.

Several sites with multiple hoards are known in Brittany (e.g. Belle-Île-en-Mer, Saint-Igeaux, Gouesnac'h, Saint-Glen), but all date from the Late Bronze to the Early Iron Age. To date, Prat is the only AMBA site with multiple hoards in Brittany. There are cases in neighbouring regions, such as Ribécourt-Dreslincourt (Oise, France), where three hoards were each associated with a post that marked their position in the landscape (Guérin *et al.* 2022).

Treatment of the Kerouarn excavation data is still in progress and the results will be presented in detailed publications, which will be prepared in the coming months, concerning the archaeological context, hoarding practices, the ornaments, and the lost-wax casting technique.

Funding statement

This project was funded by the French Ministry of Culture, supported by the Regional Archaeological Service of Brittany.

Acknowledgements

The author would like to thank Muriel Mélin, Adrien Maguy and the whole excavation team for their commitment, as well as all the specialists for their contributions.

References

- BOULUD-GAZO, S., M. MÉLIN & M. NORDEZ. 2017. De la fin du Bronze moyen au début du Bronze final. Un état des lieux dans le Grand Ouest, in T. Lachenal, C. Mordant, T. Nicolas & C. Véber (ed.) *Le Bronze moyen et l'origine du Bronze final en Europe occidentale*: 849–67. Strasbourg: Monographies d'Archéologie du Grand-Est.
- GUÉRIN, S., M. MÉLIN, M. NORDEZ *et al.* 2022. Le site à dépôts multiples du Bronze moyen atlantique 2 de Ribécourt-Dreslincourt (Oise).

Metal hoards in a ritual space?

- Bulletin de la Société préhistorique française* 119–4: 633–720.
- O'CONNOR, B., B.W. ROBERTS & N. WILKIN. 2017. The ornament horizon revisited. New and old finds of Middle Bronze Age ornaments in southern England, in T. Lachenal, C. Mordant, T. Nicolas & C. Véber (ed.) *Le Bronze moyen et l'origine du Bronze final en Europe occidentale*: 269–82.
- Strasbourg: Monographies d'Archéologie du Grand-Est.
- NORDEZ, M. 2019. *La parure en métal de l'âge du Bronze moyen atlantique*. Paris: Société Préhistorique Française.
- 2022. Le site à dépôts multiples du Bronze moyen 2 de Kerouarn à Prat (Côtes-d'Armor). Rapport 2021, Service régional de l'Archéologie de Bretagne, Rennes.