



HAL
open science

Outcomes and time trends of acute respiratory distress syndrome patients with and without liver cirrhosis: an observational cohort

Joris Pensier, Audrey de Jong, Clément Monet, Yassir Aarab, Clément Le Bihan, Mathieu Capdevila, Inès Lakbar, Lucas Stock, Fouad Belafia, Gerald Chanques, et al.

► To cite this version:

Joris Pensier, Audrey de Jong, Clément Monet, Yassir Aarab, Clément Le Bihan, et al.. Outcomes and time trends of acute respiratory distress syndrome patients with and without liver cirrhosis: an observational cohort. *Annals of Intensive Care*, 2023, 13 (1), pp.96. 10.1186/s13613-023-01190-1 . hal-04223588

HAL Id: hal-04223588

<https://hal.science/hal-04223588>

Submitted on 30 Sep 2023

HAL is a multi-disciplinary open access archive for the deposit and dissemination of scientific research documents, whether they are published or not. The documents may come from teaching and research institutions in France or abroad, or from public or private research centers.

L'archive ouverte pluridisciplinaire **HAL**, est destinée au dépôt et à la diffusion de documents scientifiques de niveau recherche, publiés ou non, émanant des établissements d'enseignement et de recherche français ou étrangers, des laboratoires publics ou privés.

Outcomes and time trends of acute respiratory distress syndrome patients with and without liver cirrhosis: an observational cohort

Joris Pensier^{1,2}, Audrey De Jong^{1,2}, Clément Monet^{1,2}, Yassir Aarab¹, Clément Le Bihan¹, Mathieu Capdevila^{1,2}, Inès Lakbar^{1,3}, Lucas Stock¹, Fouad Belafia¹, Gerald Chanques^{1,2}, Nicolas Molinari^{4,5} and Samir Jaber^{1,2,6*}

1 Anesthesiology and Intensive Care; Anesthesia and Critical Care Department B, Saint Eloi Teaching Hospital, PhyMedExp, University of Montpellier, INSERM U1046, 1, 80 Avenue Augustin Fliche, Montpellier Cedex 5, Montpellier, France.

2 Centre Hospitalier Universitaire Montpellier, 34295 Montpellier, France.

3 CEReSS, Health Service Research and Quality of Life Centre, School of Medicine, Aix-Marseille University, La Timone, Marseille, France.

4 Medical Information, IMAG; CNRS, Univ Montpellier, Centre Hospitalier Regional Universitaire de Montpellier, Montpellier, France.

5 Institut Desbrest de Santé Publique (IDESP), INSERM-Université de Montpellier. Département d'informatique Médicale, CHRU Montpellier, Montpellier, France.

6 Département d'Anesthésie Réanimation B (DAR B), 80 Avenue Augustin Fliche, 34295 Montpellier, France.

***Correspondence:**

Samir Jaber s-jaber@chu-montpellier.fr

Keywords

Intensive care unit, Acute respiratory distress syndrome, Ventilation, Liver failure, Cirrhosis

Abstract

Background

In studies prior to lung-protective ventilation, liver cirrhosis in acute respiratory distress syndrome (ARDS) was associated with high mortality rates. Since patients with cirrhosis have been excluded from many trials on ARDS, their outcome when treated with lung-protective ventilation is unclear. The objectives were to assess whether cirrhosis is associated with mortality in ARDS and trends over time in mortality and severity.

Methods

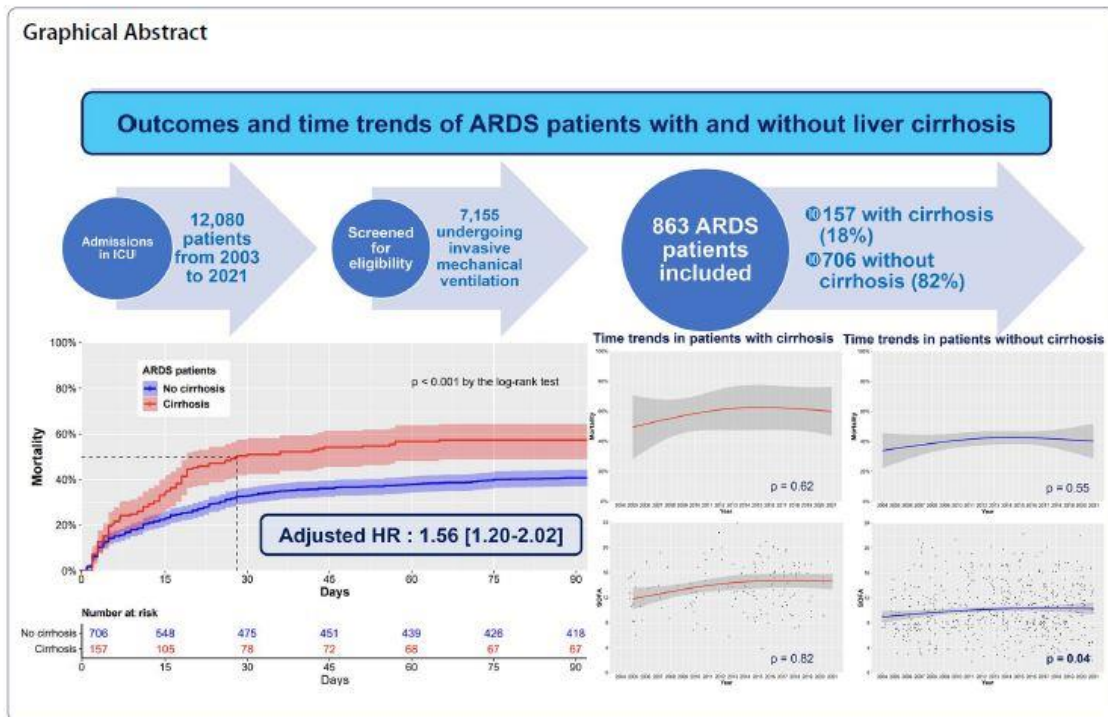
We conducted a retrospective analysis of a prospective observational cohort conducted in a 20-bed tertiary ICU from October 2003 to December 2021. All consecutive adult critically ill patients with ARDS were included. ARDS was defined by the Berlin criteria. The primary outcome was 90 day mortality, assessed with Kaplan–Meier curves and multivariate Cox analysis. Time trends were assessed on 90 day mortality, Sequential Organ-Function Assessment score (SOFA) and non-hepatic SOFA. Ventilation settings were compared between patients with and without cirrhosis.

Results

Of the 7155 patients screened, 863 had a diagnosis of ARDS. Among these ARDS patients, 157(18%) had cirrhosis. The overall 90 day mortality was of 43% (378/863), 57% (90/157) in patients with cirrhosis and 41% (288/706) in patients without cirrhosis ($p < 0.001$). On survival curves, cirrhosis was associated with 90 day mortality ($p < 0.001$). Cirrhosis was independently associated with 90 day mortality in multivariate analysis (hazard ratio = 1.56, 95% confidence interval 1.20–2.02). There was no change in mortality over time in ARDS patients with and without cirrhosis. SOFA ($p = 0.04$) and non-hepatic SOFA ($p = 0.02$) increased over time in ARDS patients without cirrhosis, and remained stable in ARDS patients with cirrhosis. Tidal volume, positive end-expiratory pressure, plateau pressure and driving pressure were not different between ARDS patients with and without cirrhosis.

Conclusions

Although ARDS management improved over the last decades, the 90 day mortality remained high and stable over time for both ARDS patients with (57%) and without cirrhosis (41%). Nevertheless, the severity of patients without cirrhosis has increased over time, while the severity of patients with cirrhosis has remained stable.



Background

The acute respiratory distress syndrome (ARDS) is a serious condition with a high mortality, ranging from 35 to 50% [1–3]. In studies performed before 2000, liver cirrhosis in ARDS patients was associated with an even higher mortality, ranging from 67 to 96% [4–6]. Since then, research has provided new insights on ARDS that have resulted in major clinical implications [7, 8]. Randomized controlled trials have strengthened their methodology over time [9], and lung-protective ventilation has emerged as a standard of care [10, 11]. A decrease of mortality in ARDS since the 1990's has been found [12–14]. However, patients with cirrhosis have been excluded from 9 out of 15 randomized controlled trials on ARDS performed between 2005 and 2015 [1, 15, 16], and recent trials continue to list cirrhosis as an exclusion criterion [17, 18].

At the same time, the proportion of critically ill patients with comorbidities in overall ARDS patients is increasing. Half of the ARDS patients have a major comorbidity [15]. In a study [15], cirrhosis was present in 7.2% of ARDS patients and led to twice as many treatment limitation decisions in Intensive Care Unit (ICU) than patients without comorbidity. However, cirrhosis was not associated with 28 day mortality in a multivariate analysis in this study. In a secondary analysis of ACURASYS and PROSEVA by Dizier and al., early hepatic dysfunction was associated with mortality, but no distinction was made between acute, chronic and acute-on-chronic liver failure [19].

In this setting, it is unclear whether the prognosis of ARDS patients with cirrhosis has improved along with the breakthroughs done in the management of the overall population of ARDS patients [15], or if cirrhosis remains associated with worse outcomes in ARDS.

Our primary objective was to assess whether cirrhosis is associated with the 90 day mortality in ARDS patients.

Our secondary objectives were to assess changes over time in mortality and severity of ARDS patients with and without cirrhosis, and to compare ventilation settings in ARDS patients with and without cirrhosis. Our hypothesis was that cirrhosis remains associated with mortality in ARDS with no decrease over the study period, despite ventilation settings similar in patients with and without cirrhosis.

Material and methods

Study design

We conducted a retrospective analysis of prospectively collected data of all ARDS adult patients consecutively admitted to a 20-bed mixed medical-surgical adult ICU in a university teaching hospital between October 2003 and December 2021. We obtained approval from the Montpellier University Hospital ethics committee for the Forever project on May 29, 2019 (Comité Local d’Ethique Recherche, agreement number: 2019_IRB-MTP_05-25). The study has been performed in accordance with the Helsinki declaration of 1975.

Data collection

Patients were identified through our computerized database. ARDS was identified based on the Berlin criteria consensus definition[20]: (1) timing: onset within 1 week of a known clinical insult or new or worsening respiratory symptoms; (2) chest imaging: bilateral opacities, not fully explained by effusions, lobar/lung collapse or nodules; (3) origin of edema: respiratory failure not fully explained by cardiac failure or fluid overload; (4) PaO₂/FiO₂ ratio (PaO₂/FiO₂) ≤ 300 mmHg with positive end-expiratory pressure (PEEP) or continuous positive airway pressure ≥ 5 cm H₂O. ARDS diagnosis was retrospectively reviewed by two physicians (JP and ADJ). As performed in previous studies [21–23], the diagnosis of cirrhosis was based on previous histology findings when available or on various associations of clinical, biological, endoscopic, and/or ultrasonographic or imaging findings, including cutaneous manifestations such as jaundice or skin telangiectasias, evidence of portal hypertension such as variceal bleeding, ascites, hepatic encephalopathy, and biological results of liver failure. All consecutive adult patients with ARDS undergoing invasive mechanical ventilation hospitalized during the study period in ICU were included in the study. Only the first admission of each patient with ARDS was retained for analysis. Patient data were recorded by the ICU’s physicians and included demographics, anthropometrics, clinical and biological data on ICU admission, as well as the Sequential Organ Failure Assessment (SOFA score) [24], the Simplified Acute Physiology Score II (SAPS II) and comorbidities. The SOFA score was split in non-hepatic SOFA and hepatic SOFA. Ventilator-associated pneumonia was diagnosed as previously published [25]. All ventilation data (plateau pressure, tidal volume (V_t), PEEP, driving pressure (plateau pressure–PEEP), respiration rate) were recorded at day 1 of the ARDS onset. Compliance of the respiratory system (C_{rs}) was calculated using the formula V_t/(plateau pressure–PEEP) [2]. ARDS severity was assessed according to the Berlin definition (severe ARDS: PaO₂/ FiO₂ < 100 mmHg, moderate: PaO₂/ FiO₂ [100–200 mmHg], mild: PaO₂/ FiO₂ > 200 mmHg) [20], based on the worse PaO₂/ FiO₂ at day 1 of ARDS onset. Child–Pugh score was assessed on the day of ICU admission and calculated as previously described [22]. The Model for End-Stage Liver Disease (MELD) score was calculated based on the laboratory results obtained on admission in the ICU [26]. All included patients were ventilated with a lung-protective mechanical ventilation protocol as defined in the literature: objective of low V_t of 6 ml/kg of predicted body weight (PBW), limited plateau pressure [2]. Ventilatory parameters were set to avoid intrinsic PEEP.

Outcomes

The primary outcome was the mortality at 90 days (90 day mortality), obtained using hospital electronic patient records. The secondary outcomes were the evolution of 90 day mortality over the study period, the evolution of the SOFA score and the non-hepatic SOFA score over the study period, and ventilatory parameters at day one of ARDS onset.

Statistical analysis

First, a descriptive analysis was performed overall in cirrhotic and non-cirrhotic patients. Quantitative variables were expressed as mean [standard deviation (SD)] or median (interquartile range, 25–75%) and compared using the Student-t test or Wilcoxon test as appropriate (Gaussian or non-Gaussian variables) [27]. Qualitative variables were expressed as numbers (%) and compared using the uncorrected Chi-square test or Fisher test as appropriate [27].

Survival curves were set up until day 90 using the Kaplan–Meier method and compared with the log-rank test [28]. Then we used a univariate Cox-proportional hazard model to determine whether cirrhosis was associated with 90 day mortality in an unadjusted analysis [28]. Then we used a multivariate Cox-proportional hazard model to determine whether cirrhosis was independently associated with mortality after adjustment for age, non-hepatic SOFA and the PaO₂/FiO₂ at day one of the ARDS onset [2]. Collinearity between variables was tested [9]. No imputation of missing data was made.

Then, we performed an exploratory analysis using a logistic regression. We performed a univariate analysis to assess the variables associated with 90 day mortality in ARDS patients. For both (Cox-proportional and logistic model), variables with a *p*-value < 0.20 in the univariate analysis were selected and a stepwise procedure was used to select the final multivariate model, according to their Akaike Information Criteria (AIC) [9].

Then, we performed an exploratory analysis excluding the patients included in randomized controlled trials. Survival curves were set up until day 90 using the Kaplan–Meier method and compared with the log-rank test [28]. Then we used a univariate Cox-proportional hazard model to determine whether cirrhosis was associated with 90 day mortality in an unadjusted analysis [28]. Then we used a multivariate Cox-proportional hazard model to determine whether cirrhosis was independently associated with mortality after adjustment for age, non-hepatic SOFA and the PaO₂/FiO₂ at day one of the ARDS onset [2].

Time trends in day-90 mortality in ARDS patients with cirrhosis and without cirrhosis were evaluated with the Cochran–Armitage test [15]. Time trends in SOFA score and non-hepatic SOFA score were evaluated with the Mann–Kendall test [29] (to assess monotonic trends over time) and the Pettitt’s test [30] (to detect change-points over time).

Tests were two-sided and *p* < 0.05 were considered significant. We used R (version 4.2.0) to perform all statistical analyses. The study was reported according to the STrengthening the Reporting of OBservational studies in Epidemiology (STROBE) reporting guideline statement [31].

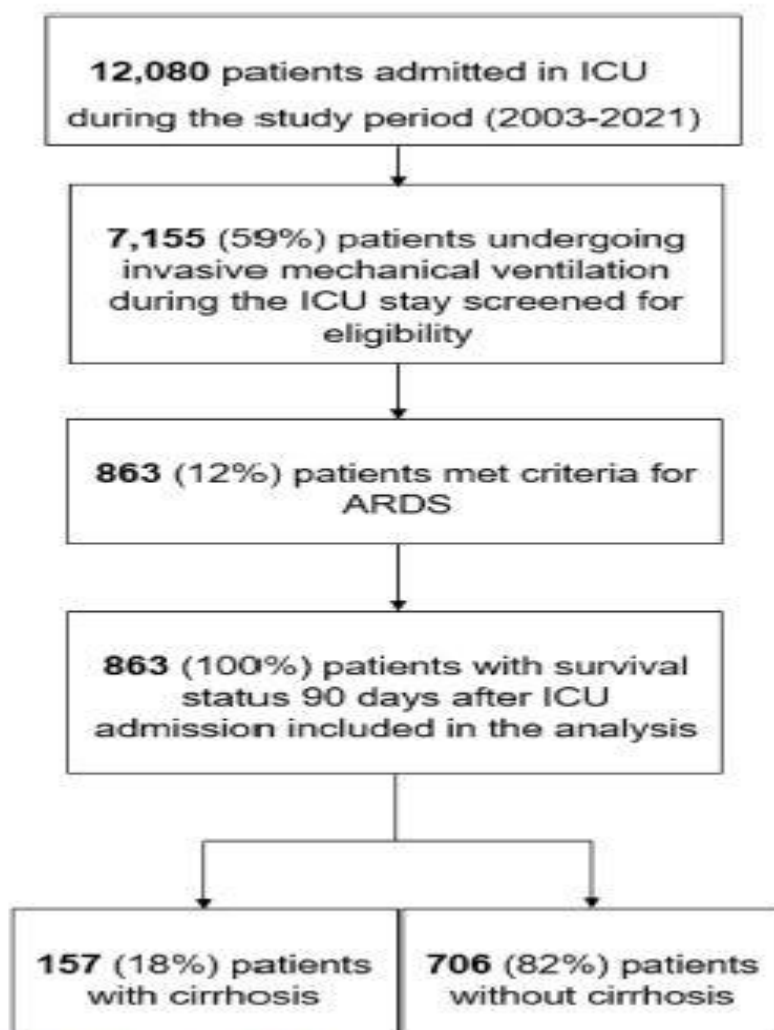


Fig. 1 Flowchart of the study

Results

Patients

During the study period (2003–2021), 12,080 patients were admitted in ICU, and 7155 (59%) patients underwent mechanical ventilation. Among those patients, 863 (12%) met criteria for ARDS. Of these patients, 863 (100%) had an available survival status 90 days after ICU admission and were included in the analysis. Among these 863 patients, 157 (18%) were ARDS patients with cirrhosis and 706 (82%) were ARDS patients without cirrhosis. Figure 1 presents the flowchart of the study. One hundred and forty-two patients (16%) had been included in prospective randomized trials: 12 in the EXPRESS study [32], 26 in the ACURASYS study [33], 12 in the PROSEVA study [34], 42 in the BIRDS study (NCT01862016), and 49 in the LIVE study [18] and one in the HIGH study [35]. The baseline characteristics for ARDS patients with and without cirrhosis are presented in Table 1 and Additional file 1: Table S1. The management and the outcomes of ARDS patients are presented in Table 2.

Table 1 Baseline characteristics in 863 ARDS patients with and without cirrhosis

Characteristics	Total (%) (n = 863)	Patients with cirrhosis (n = 157)	Patients without cirrhosis (n = 706)	p value
Age (years)	60 (±15)	56 (±11)	62 (±15)	<0.001
Sex				0.10
Male	597 (69%)	119 (76%)	478 (68%)	
Female	266 (31%)	38 (24%)	228 (32%)	
BMI (kg/m ²), mean (±SD)	25.9 (±5.9)	25.2 (±5.4)	26.0 (±5.8)	0.24
SAPS II, mean (±SD)	52 (±18)	53 (±18)	52 (±18)	0.62
SOFA, mean (±SD) ^a	11 (±4)	13 (±4)	10 (±4)	<0.001
Non-hepatic SOFA, mean (±SD) ^a	10 (±4)	11 (±3)	9 (±4)	<0.001
Hepatic SOFA, mean (±SD) ^a	1 (±1)	2 (±1)	1 (±1)	<0.001
Cause of ARDS				0.01
Medical	480 (56%)	102 (65%)	378 (54%)	
Postoperative	383 (44%)	55 (35%)	328 (46%)	
Origin of ARDS				0.41
Pulmonary	479 (55%)	82 (52%)	397 (56%)	
Pneumonia	204 (24%)	36 (23%)	168 (24%)	0.80
Extrapulmonary	384 (45%)	75 (48%)	309 (44%)	
Severity of ARDS				0.04
Mild	315 (36%)	45 (28%)	270 (39%)	
Moderate	425 (49%)	83 (53%)	342 (48%)	
Severe	123 (14%)	29 (19%)	94 (13%)	
PaO ₂ /FiO ₂ (mmHg), mean (±SD)	180 (±95)	168 (±82)	183 (±97)	0.58
PaCO ₂ (mmHg), mean (±SD)	40 (±4)	40 (±4)	40 (±4)	0.84
Lactate, mean (±SD)	2.1 (±1)	3.2 (±2)	1.9 (±1)	0.01
pH, mean (±SD)	7.33 (±0.13)	7.30 (±0.16)	7.33 (±0.12)	0.15
Bicarbonate (mmol/L), mean (±SD)	24 (±13)	22 (±5)	24 (±14)	0.17

SD: standard deviation, BMI: body mass index, SAPS II: Simplified Acute Physiology Score II, SOFA: Sequential Organ Failure Assessment, ARDS: acute respiratory distress syndrome, PaO₂/FiO₂: PaO₂/FiO₂ ratio

^a Forty (5%) missing values

Table 2 ARDS management and outcomes in 863 ARDS patients with and without cirrhosis

Characteristics	Total (%) (n = 863)	Patients with cirrhosis (n = 157)	Patients without cirrhosis (n = 706)	p value
Prone positioning	317 (37%)	47 (30%)	270 (38%)	0.06
NMBA	485 (56%)	78 (50%)	407 (58%)	0.08
Inhaled nitric oxide	81 (9%)	7 (4%)	74 (10%)	0.03
Corticosteroids	354 (41%)	129 (83%)	225 (32%)	<0.001
ECMO	18 (2%)	2 (1%)	16 (2%)	0.43
Ventilator-associated pneumonia	156 (18%)	32 (20%)	124 (18%)	0.87
MV-free days at 28 day, mean (±SD)	21 (±7)	22 (±6)	21 (±7)	0.18
ICU length of stay, mean (±SD)	14 (±13)	15 (±12)	14 (±13)	0.07
Hospital length of stay, mean (±SD)	23 (±24)	19 (±23)	24 (±24)	0.01
7 day mortality	146 (17%)	37 (24%)	109 (15%)	0.01
28 day mortality	308 (36%)	78 (50%)	230 (33%)	<0.001
90 day mortality	378 (44%)	90 (57%)	288 (41%)	<0.001

ARDS: acute respiratory distress syndrome, SD: standard deviation, NMBA: neuromuscular blocking agent, ECMO: extra-corporeal membrane oxygenation, MV: mechanical ventilation, ICU: intensive care unit

Among the 157 ARDS patients with cirrhosis, 19 patients (12%) were classified Child–Pugh A, 48 patients (31%) were classified Child–Pugh B, and 90 patients (57%) were classified Child–Pugh C. The main cause of cirrhosis was alcohol in 94 patients (59%), viral hepatitis in 40 patients (26%) and other in 23 patients (15%). Among patients with cirrhosis, 31 (19%) underwent liver transplantation after the diagnosis of ARDS. Specific characteristics of ARDS patients with cirrhosis are presented in Additional file 1: Table S2. Additional file 1: Table S3 summarizes missing values for studied outcomes.

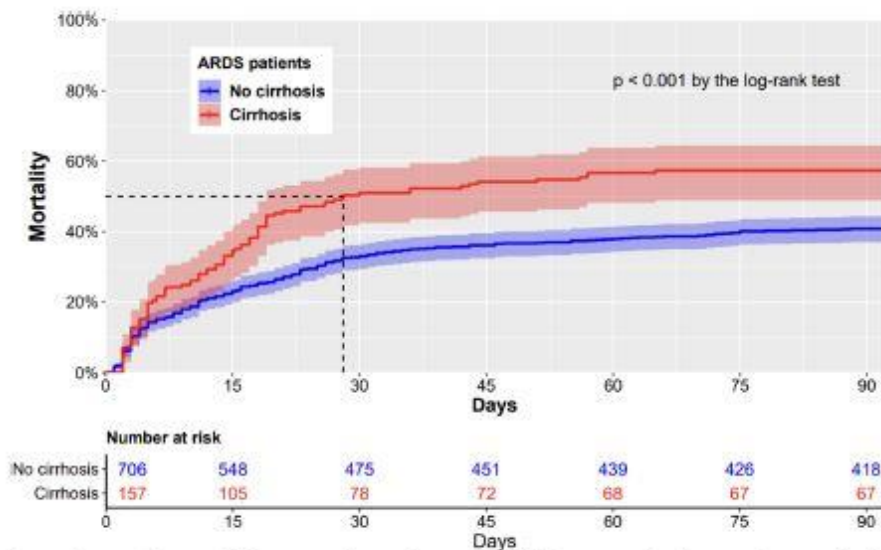


Fig. 2 Cumulative 90 day mortality in 706 ARDS patients without cirrhosis and 157 ARDS patients with cirrhosis. p -value < 0.001 by the log-rank test.

Primary outcome: 90 day mortality

90 day mortality was of 43% overall (378/863). The 90 day mortality was of 57% (90/157) in the ARDS patients with cirrhosis and of 41% (288/706) in the ARDS patients without cirrhosis ($p < 0.001$). Kaplan–Meier survival curves were set up until 90 days after admission in the ICU (Fig. 2). In survival analysis, the 90 day mortality was significantly higher in ARDS patients with cirrhosis, compared to ARDS patients without cirrhosis ($p < 0.001$ by the log-rank test). In the univariate Cox-proportional hazard model, cirrhosis was significantly associated with the 90-mortality (unadjusted hazard ratio (HR) = 1.63, 95% confidence interval (95%CI) [1.28–2.06], $p < 0.001$).

In the multivariate Cox-proportional hazard model, cirrhosis was independently associated with mortality after adjustment for age, non-hepatic SOFA and the PaO₂/FiO₂ at day one of the ARDS onset (adjusted HR = 1.56, 95%CI [1.20–2.02], $p < 0.001$). No collinearity between variables was found (Additional file 1: Table S4).

In the exploratory analysis using a logistic regression, age, non-hepatic SOFA, cause of ARDS, origin of ARDS, ARDS severity and use of neuromuscular blocking agents (NMBA) were selected in the univariate analysis (Additional file 1: Table S5.). After the stepwise procedure, the final multivariate model included cirrhosis, age, non-hepatic SOFA and ARDS severity (Additional file 1: Table S6). In this model, cirrhosis was independently associated with mortality (OR = 1.78, 95%CI [1.15–2.75], $p < 0.01$).

In the exploratory analysis excluding the 142 patients included in randomized controlled trials, Kaplan–Meier survival curves were set up until 90 days after admission in the ICU (Additional file 1: Fig. S1.). In survival analysis, the 90 day mortality was significantly higher in ARDS patients with cirrhosis, compared to ARDS patients without cirrhosis ($p < 0.001$ by the log rank test). In the univariate Cox-proportional hazard model, cirrhosis was significantly associated with the 90-mortality (unadjusted hazard ratio (HR) = 1.61, 95% confidence interval (95%CI) [1.25–2.09], $p < 0.001$). In the multivariate Cox-proportional hazard model, cirrhosis was independently associated with mortality after adjustment for age, non-hepatic SOFA and the PaO₂/FiO₂ at day one of the ARDS onset (adjusted HR = 1.41, 95%CI [1.06–1.87], $p = 0.01$).

Time trends for 90 day mortality and SOFA score

Figure 3A presents the mortality of ARDS patients each year between 2003 and 2021 for patients with cirrhosis and patients without cirrhosis. There was no significant change over time in the 90 day mortality of ARDS patients with cirrhosis (Cochran–Armitage test, $p = 0.62$). There was no significant change over time in the 90 day mortality of ARDS patients without cirrhosis (Cochran–Armitage test, $p = 0.55$).

In ARDS patients with cirrhosis, there was no significant change over time in the SOFA score (Mann–Kendall test for linear trend: $p = 0.82$, Pettit’s test for change-point: $p = 0.36$, Fig. 3B). In these patients, there was no significant change over time in the non-hepatic SOFA score (Mann–Kendall test: $p = 0.52$, Pettit’s test: $p = 0.33$, Fig. 3C).

In ARDS patients without cirrhosis, SOFA score increased significantly over time (Mann–Kendall test for linear trend: $p = 0.04$, Fig. 3B.), with no detected change-point (Pettit’s test for change-point: $p = 0.21$). In these patients, non-hepatic SOFA score increased significantly over time (Mann–Kendall test: $p = 0.02$, Fig. 3C.) with a change-point detected in 2011 (Pettit’s test: $p = 0.01$).

Ventilatory parameters at day one of ARDS onset

Overall, the median V_t was of 6.3 ml/kg of PBW (IQR [5.9–7.0]). There was no significant difference in the set V_t in ARDS patients with cirrhosis compared to ARDS patients without cirrhosis ($p = 0.94$, Fig. 4A.).

Overall, the median PEEP was of 12 cmH₂O (IQR [10–14]). There was no significant difference in the set PEEP in ARDS patients with cirrhosis compared to ARDS patients without cirrhosis ($p = 0.84$, Fig. 4B.).

Overall, the median plateau pressure was of 22 cmH₂O (IQR [19–25]). There was no significant difference in the plateau pressure in ARDS patients with cirrhosis compared to ARDS patients without cirrhosis ($p = 0.44$, Fig. 4C.).

Overall, the median driving pressure was of 10 cmH₂O (IQR [8–12]). There was no significant difference in the driving pressure in ARDS patients with cirrhosis compared to ARDS patients without cirrhosis ($p = 0.35$, Fig. 4D.).

Additional file 1: Table S7 presents the ventilatory parameters set at day one of ARDS onset. The median C_{rs} was of 41 ml/cmH₂O [IQR (32–53)]. There was no significant difference in the C_{rs} in ARDS patients with cirrhosis compared to ARDS patients without cirrhosis ($p = 0.96$, Additional file 1: Fig. S2.). There was no difference in the Respiration Rate in ARDS patients with cirrhosis compared to ARDS patients without cirrhosis ($p = 0.40$, Additional file 1: Fig. S3.).

Figures S4 to S9 present the trends over time for ventilatory parameters in ARDS patients with and without cirrhosis. In ARDS patients with cirrhosis, the tidal volume did not significantly change over time (Additional file 1: Fig. S4, $p = 0.06$), the PEEP increased over time (Additional file 1: Fig. S5, $p < 0.01$), the plateau pressure did not significantly change over time (Additional file 1: Fig. S6, $p = 0.25$), while the driving pressure decreased over time (Additional file 1: Fig. S7, $p < 0.001$) and the C_{rs} increased over time (Additional file 1: Fig. S8, $p < 0.001$). The respiration rate did not significantly change over time (Additional file 1: Fig. S9, $p = 0.16$). In ARDS patients without cirrhosis, the tidal volume decreased over time (Additional file 1: Fig. S4, $p < 0.001$), the PEEP increased over time (Additional file 1:

Fig. S5, $p < 0.001$), the plateau pressure decreased over time (Additional file 1: Fig. S6, $p < 0.001$), the driving pressure decreased over time (Additional file 1: Fig. S7, $p < 0.001$), the Crs increased over time (Additional file 1: Fig. S8, $p = 0.04$) and the respiration rate decreased over time (Additional file 1: Fig. S9, $p < 0.001$).

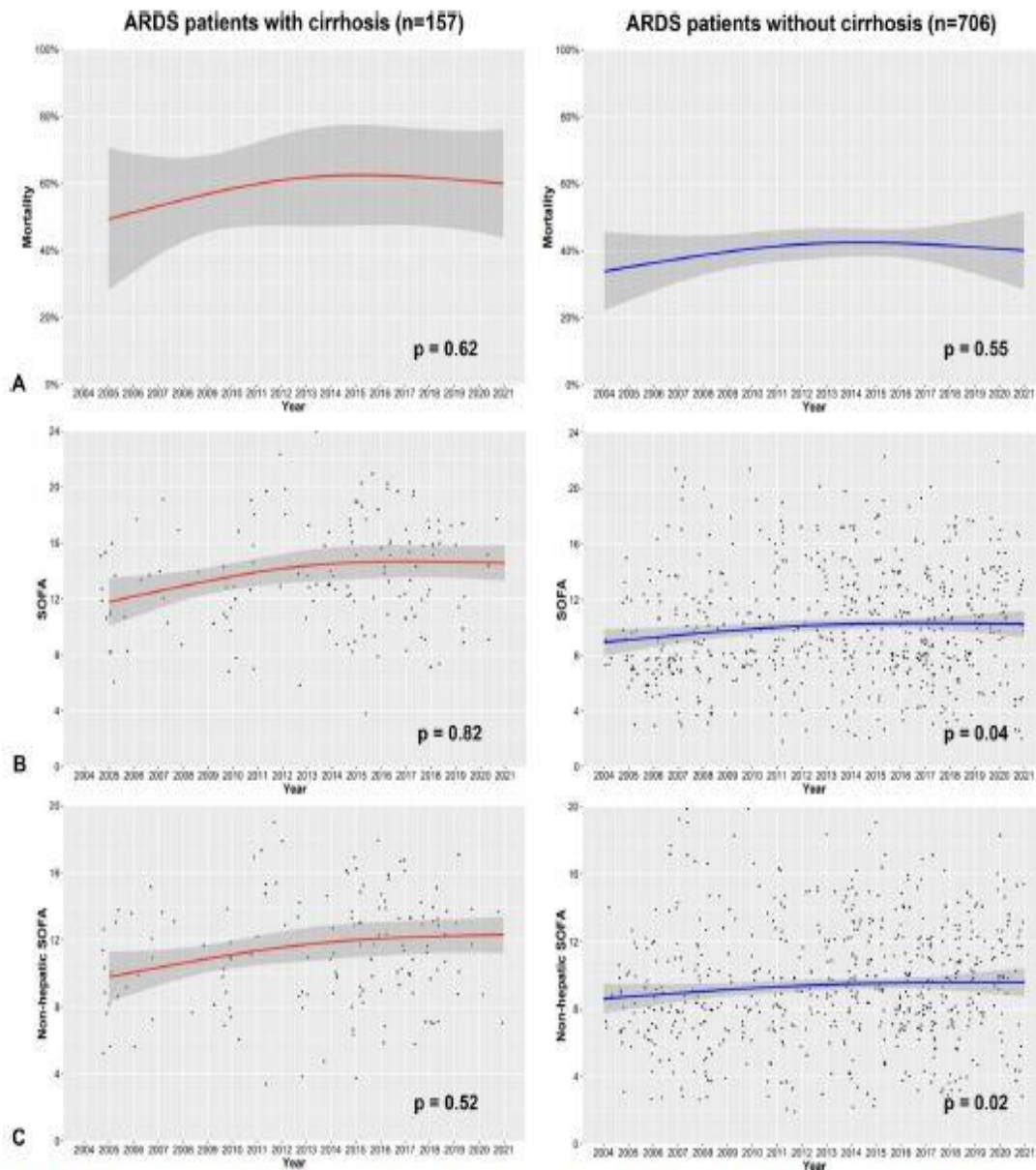


Fig. 3 Time trends over the study period in 863 ARDS patients with and without cirrhosis. **A** 90 day mortality. 90 day mortality (with standard error) during each study year in ARDS patients without cirrhosis (blue bars) and ARDS patients with cirrhosis (red bars). The test for trend was non-significant in the patients without cirrhosis (Cochran–Armitage test, $p = 0.55$) and in patients with cirrhosis (Cochran–Armitage test, $p = 0.62$). **B** SOFA score on ICU admission. SOFA score during each study year in ARDS patients without cirrhosis (blue boxes) and ARDS patients with cirrhosis (red boxes). SOFA: Sequential Organ Failure Assessment. **C** Non-hepatic SOFA score on ICU admission. SOFA score during each study year in ARDS patients without cirrhosis (blue boxes) and ARDS patients with cirrhosis (red boxes). SOFA: Sequential Organ Failure Assessment

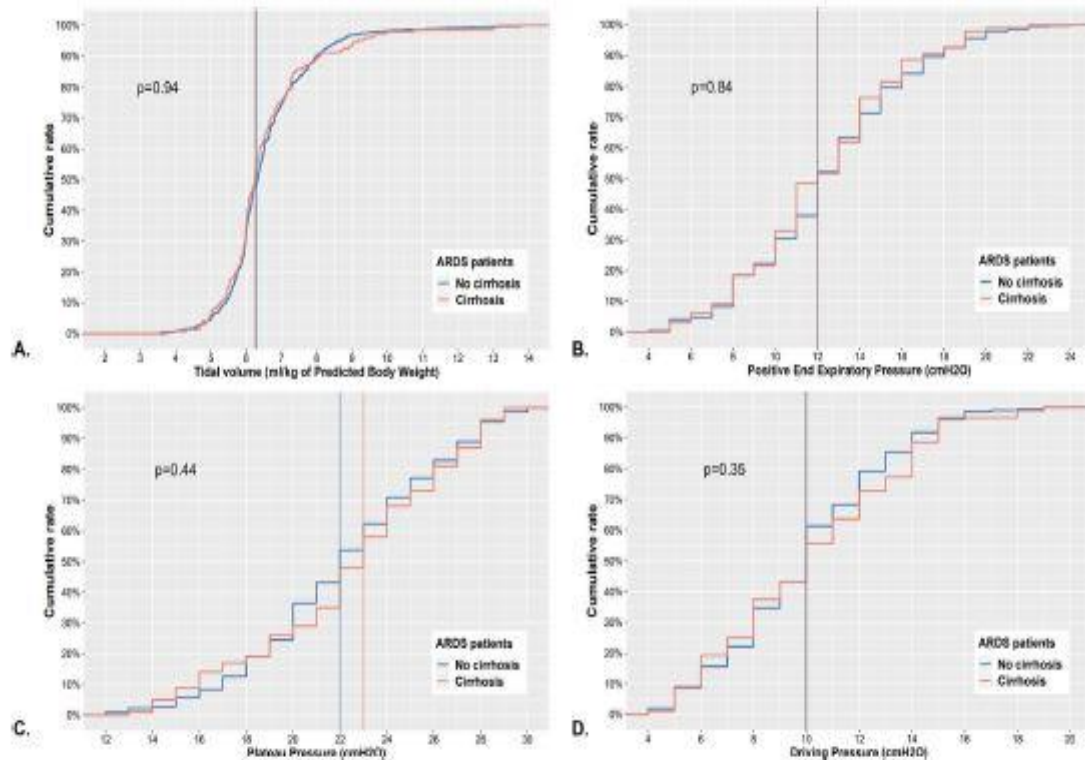


Fig. 4 Cumulative frequency graphs for ventilatory parameters in ARDS patients with and without cirrhosis. **A** Tidal volume. **B** Positive end-expiratory pressure. **C** Plateau pressure. **D** Driving pressure.

Discussion

In this monocentric cohort of 863 consecutive ARDS patients from 2003 to 2021 who received protective lung ventilation, the 90 day mortality was of 43% (378/863). The mortality among ARDS patients with cirrhosis was 57% (90/157), compared to 41% for ARDS patients without cirrhosis (288/706). Cirrhosis was independently associated with mortality, after adjustment for age, nonhepatic SOFA and PaO₂/FiO₂ at day one (HR = 1.56, 95%CI [1.20–2.02]). However, the SOFA score and the non-hepatic SOFA score have increased in ARDS patients without cirrhosis, suggesting a greater initial severity of the patients. In the meantime, the severity of ARDS patients with cirrhosis has remained stable. Ventilatory parameters in ARDS patients with cirrhosis were comparable to ventilatory parameters in ARDS patients without cirrhosis.

To our knowledge, the present study reported the largest sample size of consecutive ARDS patients with cirrhosis ($n = 157$) over an 18-year period in a single medico-surgical ICU. Monchi and al. [5] reported a 96% mortality rate in a cohort of 27 ARDS patients with cirrhosis published in 1998 before the introduction of the protective lung ventilation [36]. Matuschak and al. [4] reported a 93% mortality rate in ARDS patients with cirrhosis awaiting liver transplantation. In 2016, Gacouin and al. [21] reported a 62% mortality rate in a cohort of 42 ARDS patients with cirrhosis, fairly similar to the 57% found in the present study.

The mortality was significantly different between ARDS patients with and without cirrhosis from day 7 and until day 90. The higher mortality in ARDS patients with cirrhosis found in this study might be explained either by the liver failure, by the inadequate ventilatory settings, or by the extrapulmonary organ failures. Acute on chronic liver failure (ACLF) is associated with higher mortality [37]. In our study, 62% of the ARDS patients with cirrhosis were classified grade 3 ACLF. Hence the hepatic disease evolution rather than the ARDS could explain the higher mortality in patients with cirrhosis. However, since ARDS patients with cirrhosis were excluded from 60% of the landmark randomized controlled trials on ARDS, their physiological specificities might need a tailoring of the ventilation settings in order to improve their outcomes [15]. Moreover, mechanical ventilation even without pulmonary failure has been shown to be associated with mortality in patients with cirrhosis, suggesting its deleterious effect on outcomes [38]. In ARDS patients with cirrhosis, the SOFA score and the non-hepatic SOFA score were higher than in ARDS patients without cirrhosis, although no significant difference was found in the PaO₂/FiO₂ at day one. In the same way, Gacouin and al. [21] found that the SOFA score without respiratory points was higher in ARDS patients with cirrhosis. Therefore, we could speculate that extrapulmonary organ failures play an important role in the outcome of ARDS patients with cirrhosis [37].

In ARDS patients without cirrhosis, the overall mortality in the present study of 43% is comparable with the existing literature on the main ARDS studies [2, 3, 15, 39–43] and with the Lung Safe study [1], in a range of 35 to 47%. There are discrepancies in the literature about the evolution over time of the mortality of ARDS patients. The papers that reported an improvement of ARDS outcomes over the last decade included mainly RCTs with selected patients [13]. Albeit, the papers which reported that the mortality remained stable over the last decades included non-interventional observational studies with consecutive non selected patients [14, 44, 45]. Unlike in ARDS, the prognosis of patients with cirrhosis admitted for septic shock has improved in the last decades [46].

In our study, 90% of the patients received a V_t < 8 ml/ kg and less than 5% of the patients had a plateau pressure over 28 cmH₂O, indicating that lung-protective ventilation was applied in our ICU during the study period. There was no difference in ventilation parameters between ARDS patients with and without cirrhosis. Patients with cirrhosis have specific conditions [47] (intraabdominal hypertension, ascites, pleural effusion), and their optimal ventilation settings could differ from that of the overall population. A specific assessment of the phenotype of ARDS in patients with cirrhosis could help to better manage those patients.

The main strength of the present study is the large sample of consecutive ARDS patients in a single center over an 18-year period ($n = 863$), which contains the largest sample of ARDS patients with cirrhosis ($n = 157$) ever published. Moreover, in this cohort, patients were managed with lung-protective ventilation. Finally, the results found in the multivariate Cox-proportional hazard model were confirmed in the exploratory multivariate model using logistic regression.

Our study has several limitations, starting with the monocentric design that hampers the generalization of the results. Second, although the data were prospectively recorded, the analysis is retrospective. It might lead to inhomogeneity of the population that could impact the evolution of the outcomes of ARDS patients with cirrhosis. We could not assess the proportion of ARDS caused by community-acquired pneumonia, although it might be a factor of poor prognosis in patients with cirrhosis [48]. We did not assess the CLIF-C ACLF and the

CLIF-C AD scores, although we assessed the CLIF-C OF and ACLF grade. Last, we cannot rule out that ARDS patients with cirrhosis received less aggressive organ support than ARDS patients without cirrhosis. SOFA, nonhepatic SOFA and ARDS severity were greater in ARDS patients with cirrhosis. For this reason, we performed both the primary multivariate Cox-proportional hazard model and the exploratory multivariate logistic regression adjusting for non-hepatic SOFA and ARDS severity. Nitric oxide use was higher in ARDS patients without cirrhosis, even if it is not a first-line therapy in ARDS. Corticosteroids were administered much more frequently in ARDS patients with cirrhosis. Indeed, acute alcoholic hepatitis and auto-immune hepatitis were treated with corticosteroids regardless of the ARDS. Additionally, the prevalence of critical-illness-related corticoid insufficiency is very high in patients with cirrhosis, and those patients were treated with hydrocortisone. Causes of mortality and proportion of do-not-resuscitate orders resuscitate orders might be more common in ARDS patients with cirrhosis. To partially overcome this bias, we chose to focus the study on ARDS patients receiving invasive mechanical ventilation, thus excluding patients with do-not-intubate orders. Moreover, MV-free days at day 28, the use of NMBA and prone positioning were not significantly different in both groups, and the ICU length of stay was similar in both groups.

Conclusions

In this cohort of 863 ARDS patients from 2003 to 2021 who received protective lung ventilation, ARDS patients with cirrhosis had a significantly higher mortality than ARDS patients without cirrhosis. Although ARDS management improved over the last decades, the 90 day mortality remained high and stable over time for both ARDS patients with (57%) and without cirrhosis (41%). Nevertheless, the severity of patients without cirrhosis has increased over time, while the severity of patients with cirrhosis has remained stable. Improving the prognosis of ARDS patients with cirrhosis might require both tailoring ventilation settings and improving the management of other organ failures.

Abbreviations

ARDS Acute respiratory distress syndrome; ICU Intensive care unit; PaO₂/FiO₂ PaO₂/FiO₂ ratio; SAPS II Simplified Acute Physiology Score II; SOFA Sequential Organ Failure Assessment; V_t Tidal volume; PEEP Positive end-expiratory pressure; Crs Compliance of the respiratory system; MELD Model for end-stage liver disease; PBW Predicted body-weight; NMBA Neuromuscular blocking agent.

Acknowledgements

Not applicable.

Author contributions

JP, ADJ, GC, NM and SJ designed the study. JP and ADJ collected the data. JP, ADJ, GC, NM and SJ analyzed the data. All authors were involved in the data interpretation. JP, ADJ, LS, GC, and SJ wrote the manuscript. All authors read and approved the manuscript.

Funding

The funding source was the Montpellier University Hospital (France). It had no role in the conception, design, or conduct of the trial, nor did their representatives participate in the collection, management, analysis, interpretation, or presentation of the data or in the preparation, review, or approval of the manuscript.

Availability of data and materials

Research data and other material (e.g., study protocol and statistical analysis plan) will be made available to the scientific community, immediately on publication, with as few restrictions as possible. All requests should be submitted to the corresponding author who will review with the other investigators for consideration. A data use agreement will be required before the release of participant data and institutional review board approval as appropriate.

Declarations

Ethics approval and consent to participate

We obtained approval from the Montpellier University Hospital ethics committee for the Forever project on May 29, 2019 (Comité Local d’Ethique Recherche, agreement number: 2019_IRB-MTP_05-25). The requirement for informed consent was waived, and the opportunity to opt out of the study was provided. The study has been performed in accordance with the Helsinki declaration of 1975.

Consent to publication

Not applicable.

Competing interests

Pr. Jaber reports receiving consulting fees from Dräger, Medtronic, Baxter, Fresenius-Xenios, Mindray, and Fisher & Paykel. Dr. De Jong reports receiving consulting fees from Medtronic, Dräger, Viatrix and Fisher & Paykel. No conflict of interests is reported for other authors.

References

1. Bellani G, Laffey JG, Pham T, Fan E, Brochard L, Esteban A, et al. Epidemiology, patterns of care, and mortality for patients with acute respiratory distress syndrome in intensive care units in 50 Countries. *JAMA*. 2016;315(8):788–800.
2. De Jong A, Cossic J, Verzilli D, Monet C, Carr J, Conseil M, et al. Impact of the driving pressure on mortality in obese and non-obese ARDS patients: a retrospective study of 362 cases. *Intensive Care Med*. 2018;44(7):1106–14.

3. Pensier J, de Jong A, Hajjej Z, Molinari N, Carr J, Belafia F, et al. Effect of lung recruitment maneuver on oxygenation, physiological parameters and mortality in acute respiratory distress syndrome patients: a systematic review and meta-analysis. *Intensive Care Med.* 2019;45(12):1691–702.
4. Matuschak GM, Shaw BW Jr. Adult respiratory distress syndrome associated with acute liver allograft rejection: resolution following hepatic retransplantation. *Crit Care Med.* 1987;15(9):878–81.
5. Monchi M, Bellenfant F, Cariou A, Joly LM, Thebert D, Laurent I, et al. Early predictive factors of survival in the acute respiratory distress syndrome. A multivariate analysis. *Am J Res Crit Care Med.* 1998;158(4):1076–81.
6. Zilberberg MD, Epstein SK. Acute lung injury in the medical ICU: comorbid conditions, age, etiology, and hospital outcome. *Am J Respir Crit Care Med.* 1998;157(4 Pt 1):1159–64.
7. Slutsky AS, Villar J, Pesenti A. Happy 50th birthday ARDS! *Intensive Care Med.* 2016;42(5):637–9.
8. Grasselli G, Calfee CS, Camporota L, Poole D, Amato MBP, Antonelli M, et al; European Society of Intensive Care Medicine Taskforce on ARDS. ESICM guidelines on acute respiratory distress syndrome: definition, phenotyping and respiratory support strategies. *Intensive Care Med.* 2023. Epub ahead of print.
9. Pensier J, De Jong A, Chanques G, Futier E, Azoulay E, Molinari N, et al. A multivariate model for successful publication of intensive care medicine randomized controlled trials in the highest impact factor journals: the SCOTI score. *Ann Intensive Care.* 2021;11(1):165.
10. Slutsky AS, Ranieri VM. Ventilator-induced lung injury. *N Engl J Med.* 2013;369(22):2126–36.
11. Constantin JM, Grasso S, Chanques G, Auffer S, Futier E, Sebbane M, et al. Lung morphology predicts response to recruitment maneuver in patients with acute respiratory distress syndrome. *Crit Care Med.* 2010;38(4):1108–17.
12. Milberg JA, Davis DR, Steinberg KP, Hudson LD. Improved survival of patients with acute respiratory distress syndrome (ARDS): 1983–1993. *JAMA.* 1995;273(4):306–9.
13. Zambon M, Vincent JL. Mortality rates for patients with acute lung injury/ ARDS have decreased over time. *Chest.* 2008;133(5):1120–7.
14. Esteban A, Frutos-Vivar F, Muriel A, Ferguson ND, Peñuelas O, Abreira V, et al. Evolution of mortality over time in patients receiving mechanical ventilation. *Am J Respir Crit Care Med.* 2013;188(2):220–30.
15. Azoulay E, Lemiale V, Mourvillier B, Garrouste-Orgeas M, Schwebel C, Ruckly S, et al. Management and outcomes of acute respiratory distress syndrome patients with and without comorbid conditions. *Intensive Care Med.* 2018;44(7):1050–60.

16. Boutin C, Cohendy R, Muller L, Jaber S, Mercat A, Brochard L, et al. Impact of express study on clinical practice in ARDS patients: a single French ICU experience. *Ann Fr Anesth Reanim.* 2010;29(7–8):524–9.
17. Moss M, Huang DT, Brower RG, Ferguson ND, Ginde AA, Gong MN, et al. Early neuromuscular blockade in the acute respiratory distress syndrome. *N Engl J Med.* 2019;380(21):1997–2008.
18. Constantin JM, Jabaudon M, Lefrant JY, Jaber S, Quenot JP, Langeron O, et al. Personalised mechanical ventilation tailored to lung morphology versus low positive end-expiratory pressure for patients with acute respiratory distress syndrome in France (the LIVE study): a multicentre, singleblind, randomised controlled trial. *Lancet Respir Med.* 2019;7(10):870–80.
19. Dizier S, Forel J-M, Ayzac L, Richard J-C, Hraiech S, Lehingue S, et al. Early hepatic dysfunction is associated with a worse outcome in patients presenting with acute respiratory distress syndrome: a post-hoc analysis of the ACURASYS and PROSEVA studies. *PLoS ONE.* 2015;10(12): e0144278.
20. Ranieri VM, Rubenfeld GD, Thompson BT, Ferguson ND, Caldwell E, Fan E, et al. Acute respiratory distress syndrome: the Berlin Definition. *JAMA.* 2012;307(23):2526–33.
21. Gacouin A, Locufier M, Uhel F, Letheulle J, Bouju P, Fillatre P, et al. Liver cirrhosis is independently associated with 90 day mortality in ARDS patients. *Shock.* 2016;45(1):16–21.
22. Artru F, Louvet A, Ruiz I, Levesque E, Labreuche J, Ursic-Bedoya J, et al. Liver transplantation in the most severely ill cirrhotic patients: a multicenter study in acute-on-chronic liver failure grade 3. *J Hepatol.* 2017;67(4):708–15.
23. Levesque E, Saliba F, Ichai P, Samuel D. Outcome of patients with cirrhosis requiring mechanical ventilation in ICU. *J Hepatol.* 2014;60(3):570–8.
24. Vincent JL, Moreno R, Takala J, Willatts S, De Mendonça A, Bruining H, et al. The SOFA (Sepsis-related Organ Failure Assessment) score to describe organ dysfunction/failure On behalf of the Working Group on Sepsis-Related Problems of the European Society of Intensive Care Medicine. *Intensive Care Med.* 1996;22(7):707–10.
25. Jung B, Sebbane M, Chanques G, Courouble P, Verzilli D, Perrigault PF, et al. Previous endotracheal aspirate allows guiding the initial treatment of ventilator-associated pneumonia. *Intensive Care Med.* 2009;35(1):101–7.
26. Wiesner R, Edwards E, Freeman R, Harper A, Kim R, Kamath P, et al. Model for end-stage liver disease (MELD) and allocation of donor livers. *Gastroenterology.* 2003;124(1):91–6.
27. De Jong A, Rolle A, Molinari N, Paugam-Burtz C, Constantin JM, Lefrant JY, et al. Cardiac arrest and mortality related to intubation procedure in critically ill adult patients: a multicenter cohort study. *Crit Care Med.* 2018;46(4):532–9.

28. De Jong A, Molinari N, Sebbane M, Prades A, Futier E, Jung B, et al. Feasibility and effectiveness of prone position in morbidly obese patients with ARDS: a case-control clinical study. *Chest*. 2013;143(6):1554–61.
29. Li P, Zhao W, Kaatz S, Latack K, Schultz L, Poisson L. Factors associated with risk of postdischarge thrombosis in patients with COVID-19. *JAMA Netw Open*. 2021;4(11):e2135397.
30. Rybski D, Neumann J. A Review on the Pettitt Test Pettitt-test. In: Kropp J, Schellnhuber H-J, editors. *In Extremis: Disruptive Events and Trends in Climate and Hydrology*. Berlin, Heidelberg: Springer Berlin Heidelberg; 2011. p. 202–13.
31. von Elm E, Altman DG, Egger M, Pocock SJ, Gøtzsche PC, Vandenbroucke JP. The Strengthening the Reporting of Observational Studies in Epidemiology (STROBE) statement: guidelines for reporting observational studies. *Lancet*. 2007;370(9596):1453–7.
32. Mercat A, Richard JC, Vielle B, Jaber S, Osman D, Diehl JL, et al. Expiratory Pressure (Express) Study Group Positive end-expiratory pressure setting in adults with acute lung injury and acute respiratory distress syndrome: a randomized controlled trial. *JAMA*. 2008;299(6):646–55.
33. Papazian L, Forel JM, Gacouin A, Penot-Ragon C, Perrin G, Loundou A, et al. ACURASYS Study Investigators Neuromuscular blockers in early acute respiratory distress syndrome. *N Engl J Med*. 2010;363(12):1107–16.
34. Guérin C, Reignier J, Richard JC, Beuret P, Gacouin A, Boulain T, et al. PROSEVA Study Group Prone positioning in severe acute respiratory distress syndrome. *N Engl J Med*. 2013;368(23):2159–68.
35. Azoulay E, Lemiale V, Mokart D, Nseir S, Argaud L, Pène F, et al. Effect of high-flow nasal oxygen vs standard oxygen on 28 day mortality in immunocompromised patients with acute respiratory failure: the high randomized clinical trial. *JAMA*. 2018;320(20):2099–107.
36. Acute Respiratory Distress Syndrome Network, Brower RG, Matthay MA, Morris A, Schoenfeld D, Thompson BT, Wheeler A. Ventilation with lower tidal volumes as compared with traditional tidal volumes for acute lung injury and the acute respiratory distress syndrome. *N Engl J Med*. 2000;342(18):1301–8.
37. Jalan R, Stadlbauer V, Sen S, Cheshire L, Chang YM, Mookerjee RP. Role of predisposition, injury, response and organ failure in the prognosis of patients with acute-on-chronic liver failure: a prospective cohort study. *Crit Care*. 2012;16(6):R227.
38. Schulz MS, Mengers J, Gu W, Drolz A, Ferstl PG, Amoros A, et al. Pulmonary impairment independently determines mortality in critically ill patients with acute-on-chronic liver failure. *Liver Int*. 2023;43(1):180–93.
39. Mercat A, Richard JC, Vielle B, Jaber S, Osman D, Diehl JL, et al. Positive end-expiratory pressure setting in adults with acute lung injury and acute respiratory distress syndrome: a randomized controlled trial. *JAMA*. 2008;299(6):646–55.

40. Wongtangman K, Santer P, Wachtendorf LJ, Azimaraghi O, Baedorf Kassis E, Teja B, et al. Association of sedation, coma, and in-hospital mortality in mechanically ventilated patients with coronavirus disease 2019–related acute respiratory distress syndrome: a retrospective cohort study*. *Crit Care Med.* 2021;49(9):1524–34.
41. Camporota L, Sanderson B, Chiumello D, Terzi N, Argaud L, Rimmelé T, et al. Prone Position in COVID-19 and -COVID-19 acute respiratory distress syndrome: an international multicenter observational comparative study*. *Crit Care Med.* 2022;50(4):633.
42. Chotalia M, Ali M, Alderman JE, Kalla M, Parekh D, Bangash MN, et al. Right ventricular dysfunction and its association with mortality in coronavirus disease 2019 acute respiratory distress syndrome*. *Crit Care Med.* 2021;49(10):1757–68.
43. Demoule A, Jung B, Prodanovic H, Molinari N, Chanques G, Coirault C, et al. Diaphragm dysfunction on admission to the intensive care unit. Prevalence, risk factors, and prognostic impact—a prospective study. *Am J Resp Crit Care Med.* 2013;188(2):213–9.
44. Sakr Y, François B, Solé-Violan J, Kotfis K, Jaschinski U, Estella A, et al. Temporal changes in the epidemiology, management, and outcome from acute respiratory distress syndrome in European intensive care units: a comparison of two large cohorts. *Crit Care.* 2021;25(1):87.
45. Cochi SE, Kempker JA, Annangi S, Kramer MR, Martin GS. Mortality trends of acute respiratory distress syndrome in the United States from 1999 to 2013. *Ann Am Thorac Soc.* 2016;13(10):1742–51.
46. Galbois A, Aegerter P, Martel-Samb P, Housset C, Thabut D, Offenstadt G, et al. Improved prognosis of septic shock in patients with cirrhosis: a multicenter study*. *Crit Care Med.* 2014;42(7):1666–75.
47. Verzilli D, Constantin JM, Sebbane M, Chanques G, Jung B, Perrigault PF, et al. Positive end-expiratory pressure affects the value of intra-abdominal pressure in acute lung injury/acute respiratory distress syndrome patients: a pilot study. *Crit Care.* 2010;14(4):R137.
48. Bellinghausen C, Pletz MW, Rupp J, Rupp J Members of the CAPNETZ study group et al. Chronic liver disease negatively affects outcome in hospitalised patients with community-acquired pneumonia. *Gut.* 2021;70:221–2.