



HAL
open science

Enhanced electromechanical coupling of piezoelectric beams through an innovative design

David Gibus, Louison Tourtelier-Gallo, Pierre Gasnier, Adrien Morel, Olivier Freychet, Adrien Badel

► **To cite this version:**

David Gibus, Louison Tourtelier-Gallo, Pierre Gasnier, Adrien Morel, Olivier Freychet, et al.. Enhanced electromechanical coupling of piezoelectric beams through an innovative design. SMART 2023 - 10th ECCOMAS Thematic Conference on Smart Structures and Materials, Jul 2023, Patras, Greece. hal-04217777

HAL Id: hal-04217777

<https://hal.science/hal-04217777>

Submitted on 28 Sep 2023

HAL is a multi-disciplinary open access archive for the deposit and dissemination of scientific research documents, whether they are published or not. The documents may come from teaching and research institutions in France or abroad, or from public or private research centers.

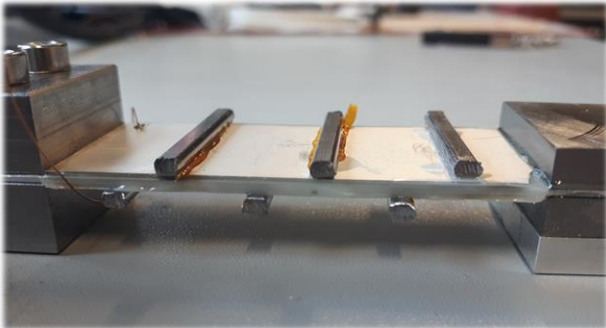
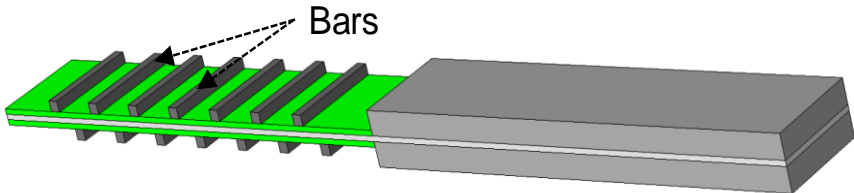
L'archive ouverte pluridisciplinaire **HAL**, est destinée au dépôt et à la diffusion de documents scientifiques de niveau recherche, publiés ou non, émanant des établissements d'enseignement et de recherche français ou étrangers, des laboratoires publics ou privés.

D. Gibus, L. Tourtelier-Gallo, P. Gasnier, A. Morel, O. Freychet, A. Badel

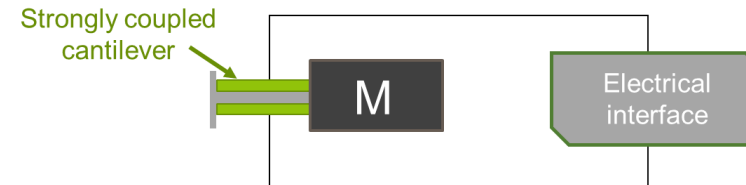
SYMME, Université Savoie Mont-Blanc

CEA Leti

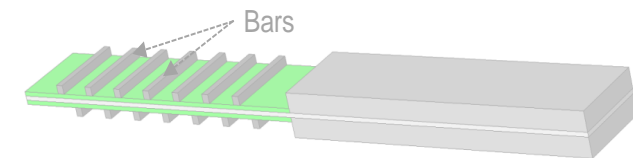
Enhanced electromechanical coupling of piezoelectric beams through an innovative design



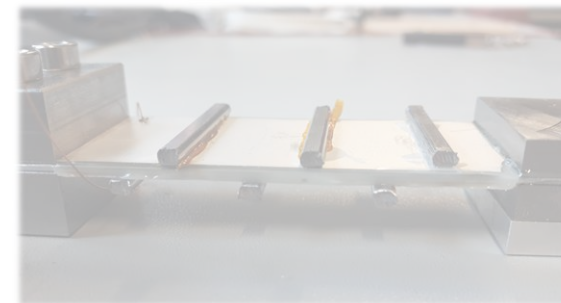
1. Context



2. Solution and simulations

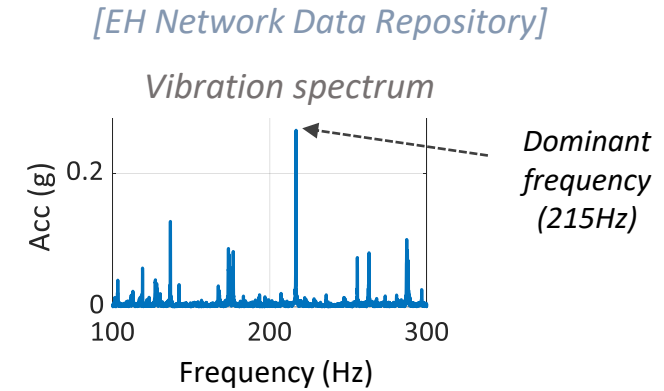
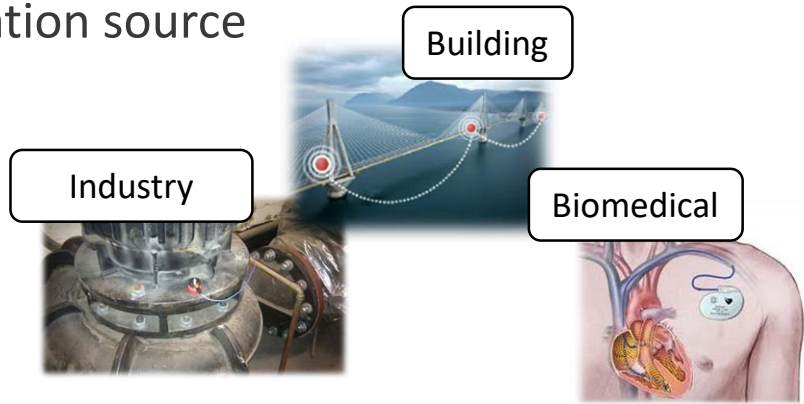


3. Experimental validation

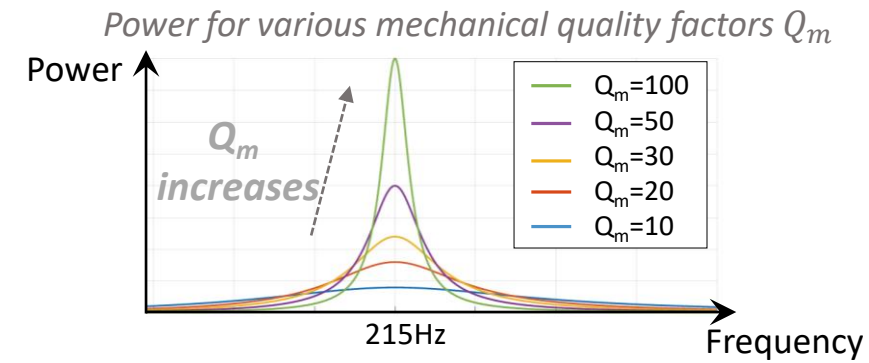
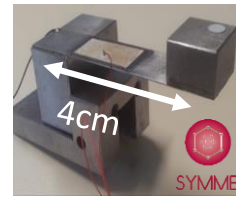
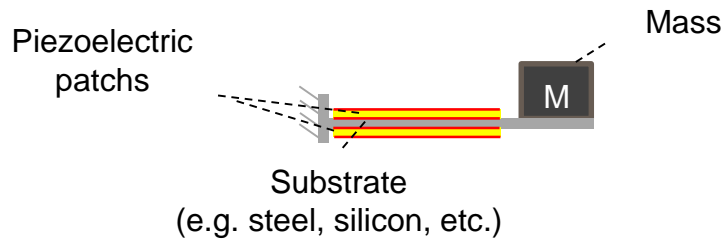


Vibration energy harvesting

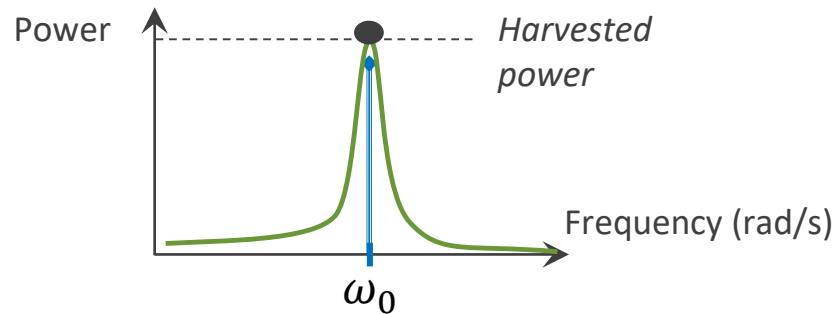
▪ Vibration source



▪ Resonant structure



▪ Tuning of frequencies



$$P_{\max} = \frac{M\gamma_M^2 Q_m}{8\omega_0}$$

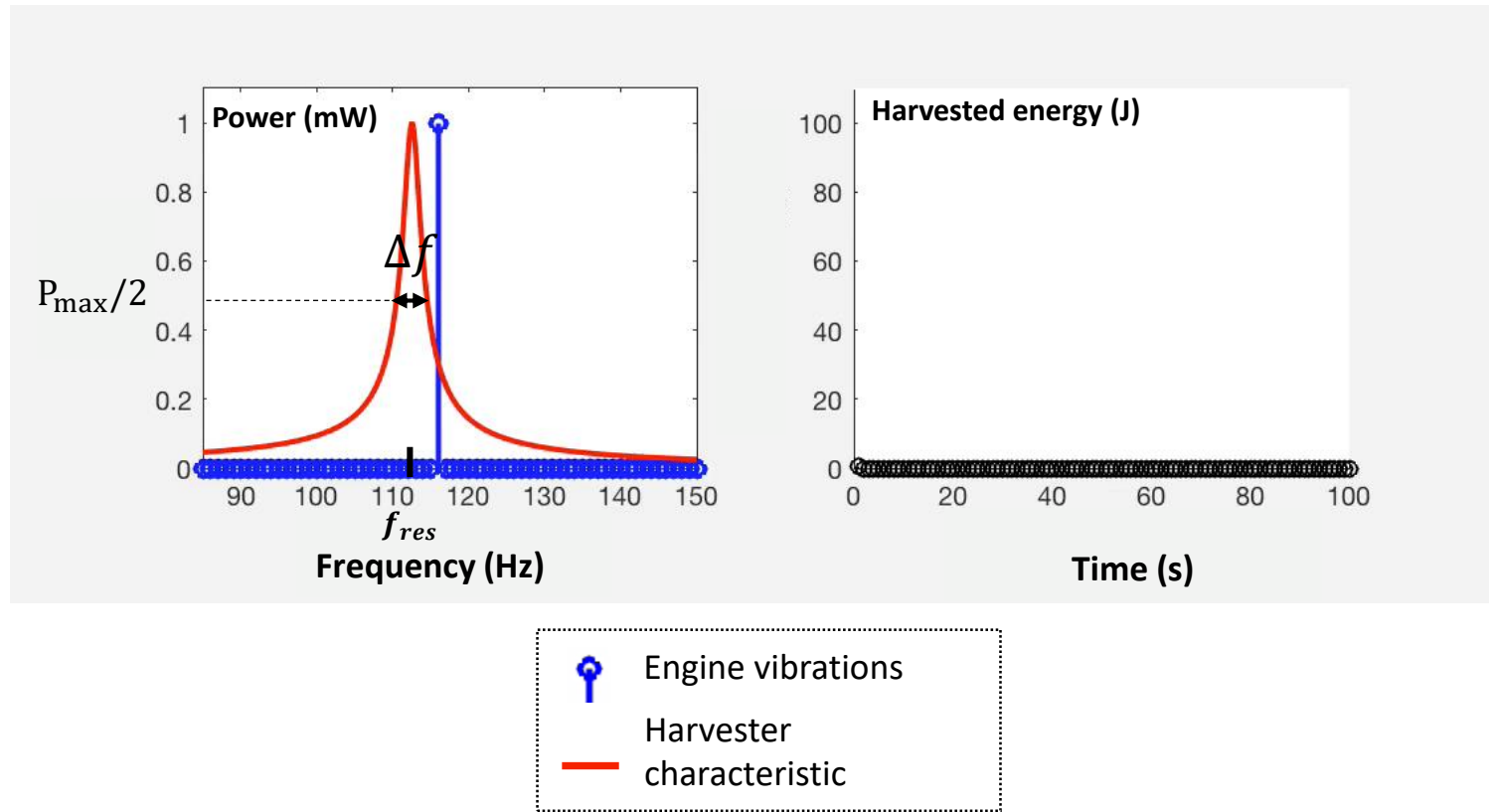
$$\text{Normalized Power Density} = \frac{P_{\max}}{\text{Volume} \times \gamma_M^2}$$

γ_M : Acceleration amplitude
 Q_m : Mechanical quality factor

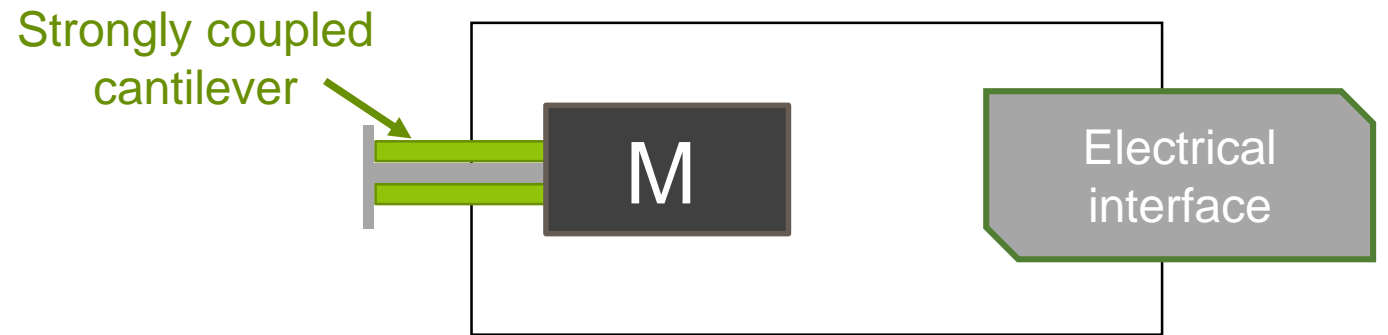
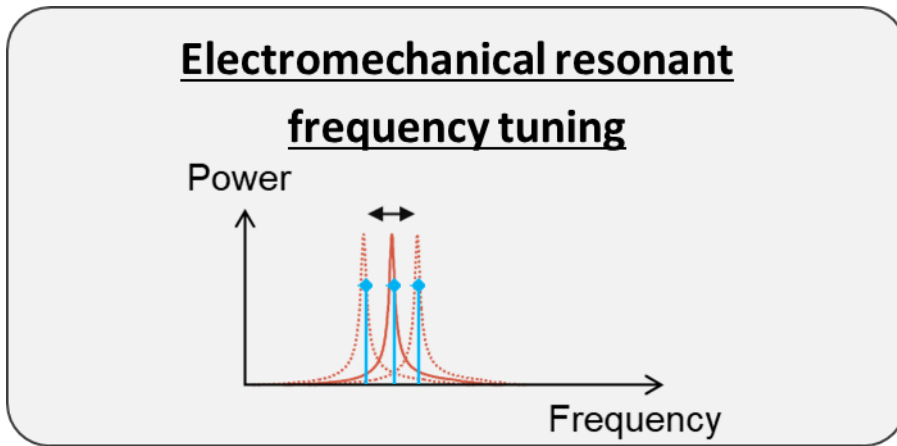
Enough power in small volume
 Usually 10-1 000 $\mu\text{W}/\text{cm}^3/\text{g}^2$

- Linear harvesters efficiencies drastically decrease if their resonant frequency do not match the vibration's frequency
- The intrinsic resonant frequency of piezoelectric energy harvesters may also varies with time, due to aging.

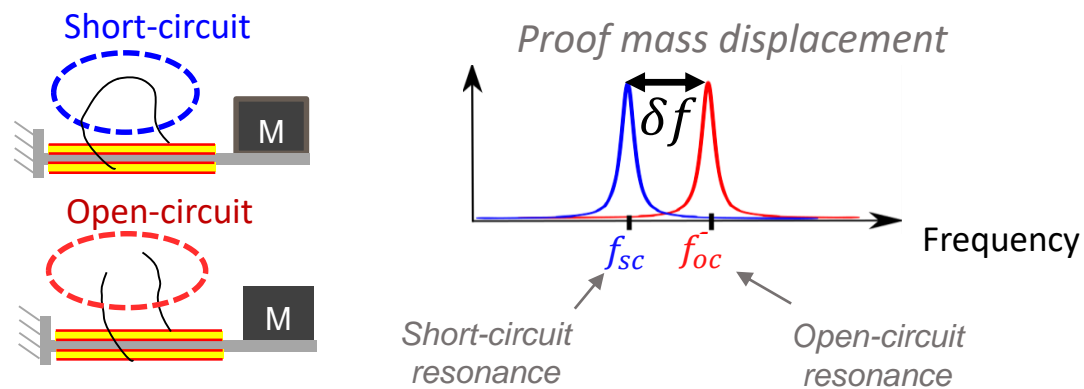
Δf : Frequency bandwidth



Necessity to either enlarge the harvesting bandwidth, or tune the harvester's resonant frequency



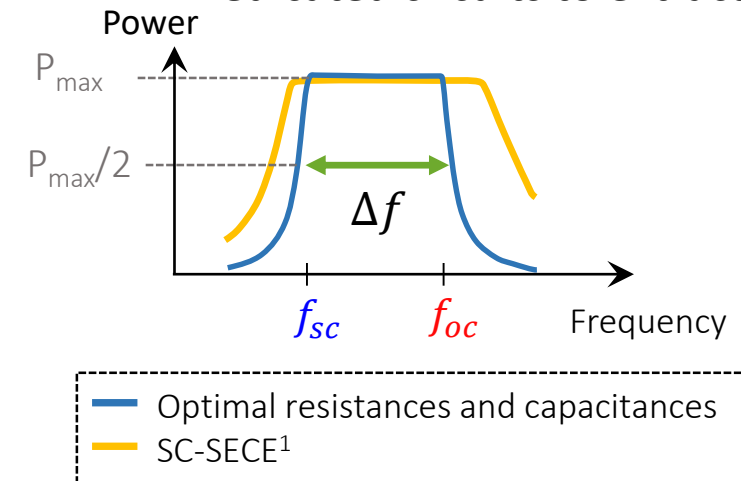
Electromechanical coupling coefficient k^2



$$k^2 = \frac{f_{oc}^2 - f_{sc}^2}{f_{oc}^2} = F(\text{materials, geometry})$$

→ Increasing the coupling k^2 increases the frequency bandwidth Δf

Dedicated circuits to extract power



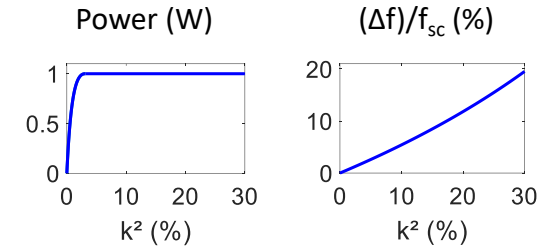
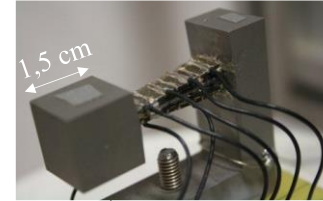
¹ A. Morel *et al.*, SMS, 2018

Electromechanical coupling coefficient

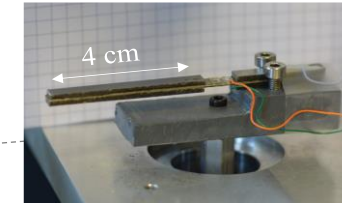
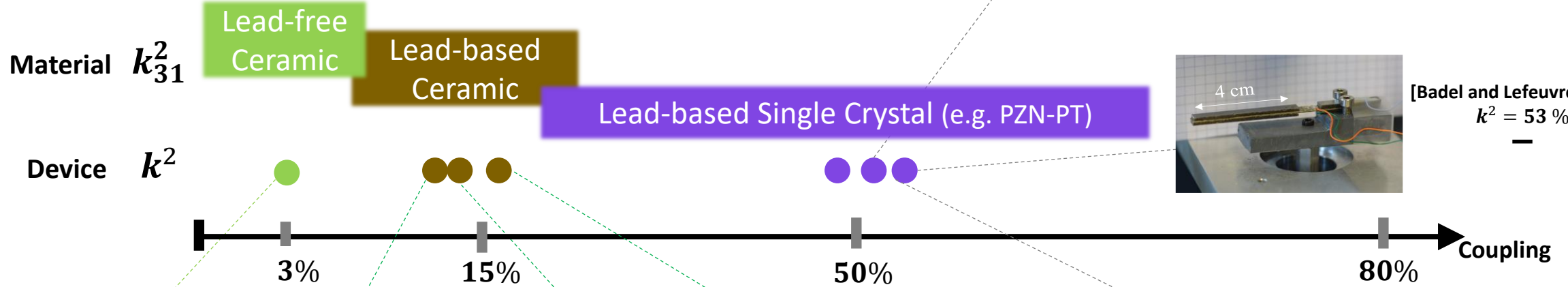
System coupling k^2 can be increased thanks to:

- The **piezoelectric material**
 - High electromechanical properties k_{31}^2
- Device **optimization**
 - Elastic energy localization in piezoelectric material
 - Strain distribution homogenization

[Ahmed-Seddik et al., 2012]
 $k^2 = 49\%$ ◀



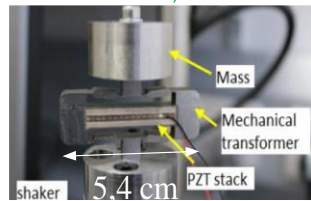
Commonly searched value : $k^2 = 2-3\%$.



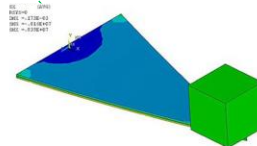
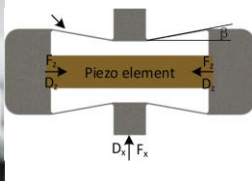
[Badel and Lefeuvre, 2014]
 $k^2 = 53\%$



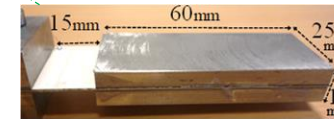
[Clementi et al., 2021]
 $k^2 = 2.8\%$



[Kuang et al., 2020]
 $k^2 = 11\%$



[Siddiqui et al., 2016]
 $k^2 = 12\%$



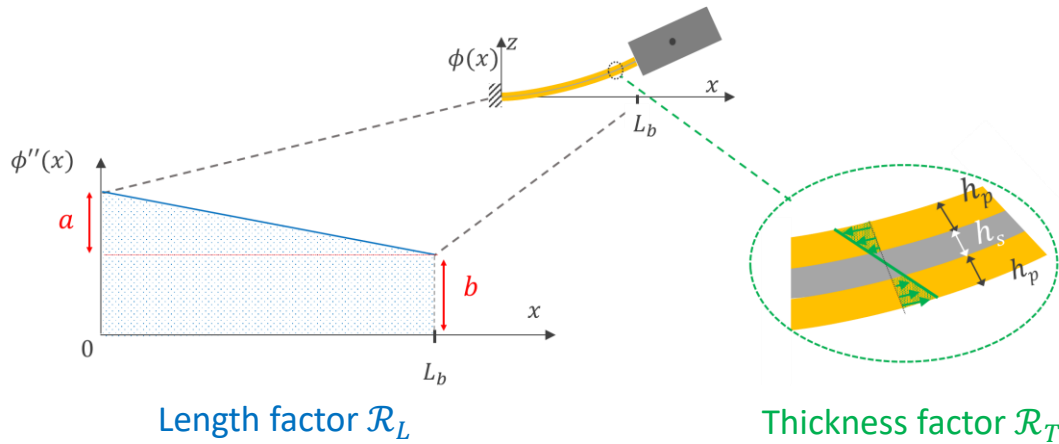
[Gibus et al., 2020]
 $k^2 = 16\%$



[Gibus et al., 2021]
 $k^2 = 50\%$

- ▲ Width tapered
- ▶ Thickness tapered
- Long proof mass
- ◊ Flexensional

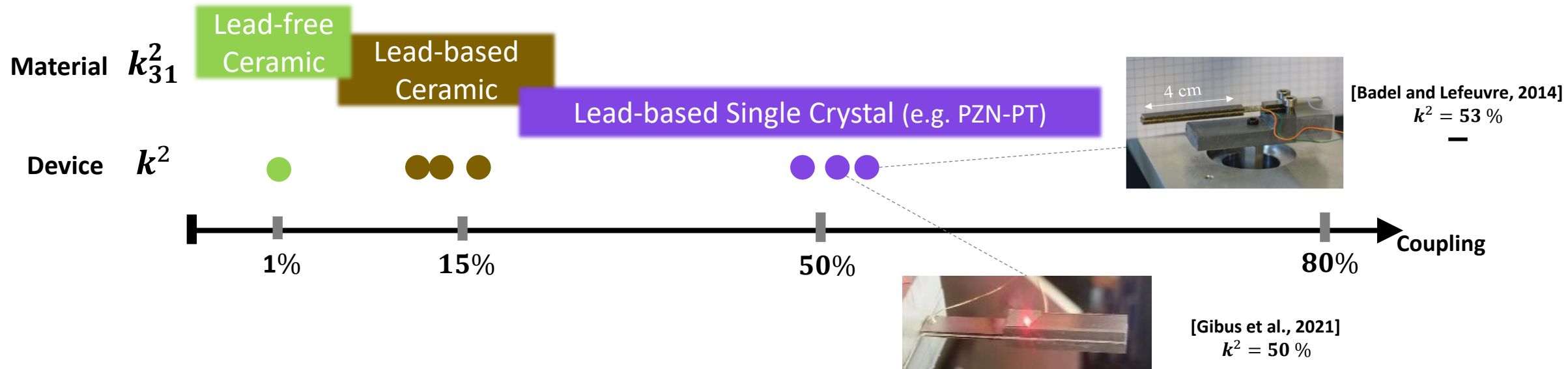
Cantilever optimization



Long proof mass useful to increase coupling coefficient as the strain becomes uniform

Material thicknesses should be optimized

Gibus et al., Applied Energy 2020

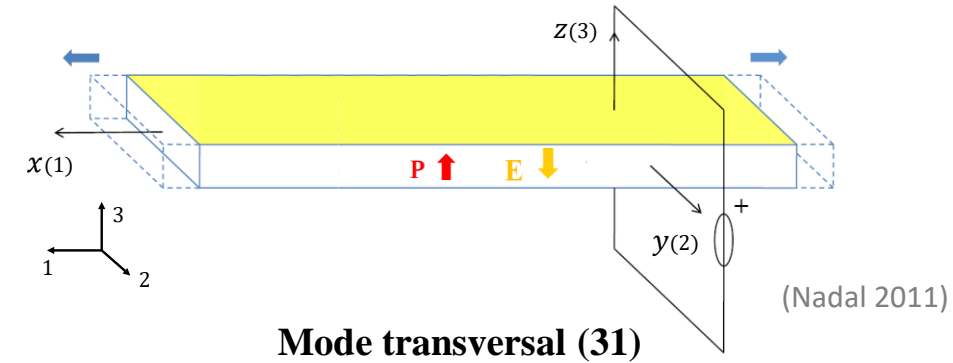


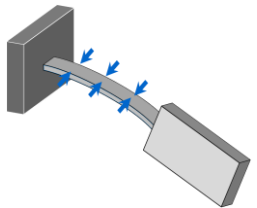
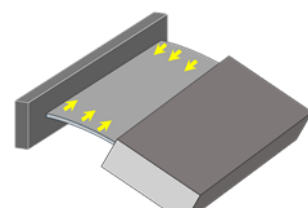
Material coupling

$$\begin{pmatrix} S \\ D \end{pmatrix} = \begin{bmatrix} s^E & -d^t \\ d & \epsilon^T \end{bmatrix} \begin{pmatrix} T \\ E \end{pmatrix}$$

d : Piezoelectric matrix
 s^E : Suppliance matrix
 ϵ^T : Permittivity matrix

T : Stress vector
 S : Strain vector
 D : Displacement electric field vector
 E : Electric field vector

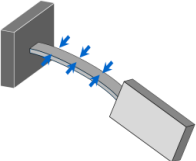
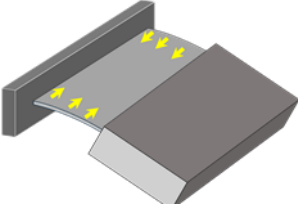


Narrow beam	Wide beam
 <p>Only lateral strain →</p> <p>No lateral stress : $T_2 = 0$</p> $k_{31}^2 = \frac{d_{31}^2}{\epsilon_{33}^T s_{11}^E}$ <p>(Commonly used coupling)</p>	 <p>Only lateral stress →</p> <p>No lateral strain : $S_2 = 0$</p> $k_{31}^{w2} = \frac{\left(d_{31} - \frac{s_{12}^E}{s_{22}^E} d_{32} \right)^2}{\left(\epsilon_{33}^T - \frac{d_{32}^2}{s_{22}^E} \right) \left(s_{11}^E - \frac{s_{12}^E{}^2}{s_{22}^E} \right)}$


For ceramics, $k_{31}^{w2} = \frac{k_{31}^{l2}}{1 - k_{31}^{l2}} \frac{(1 + \nu_p)^2}{1 - \nu_p^2}$ with the Poisson ratio ν_p defined as $\nu_p = -\frac{s_{12}^E}{s_{11}^E}$

$k_{31}^{w2} > k_{31}^2$

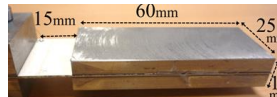
Take benefit of material parameters

	Narrow beam	Wide beam
Assumption	 <p>Only lateral strain →</p>	 <p>Only lateral stress →</p>
Ceramic PZT-5A	$k_{31}^l{}^2 = 15.1\%$	$k_{31}^w{}^2 = 34.2\%$

Experimentally validated
 $k^2 = 11.3\%$



Width × 5
 $k^2 = 16.4\%$
 $k^2 \times 160\%$



Gibus et al., Applied Energy 2020

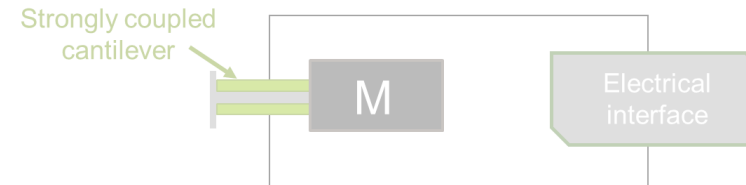
Beam width should be at least **twice** bigger than the **length** for piezoelectric ceramics

but

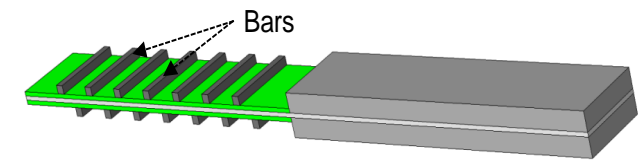
As ↗ beam length helps to ↘ resonant frequency, design issues can occur for small devices volumes and with low resonant frequencies

Is it possible to reach with this behavior without enlarging the beam ?

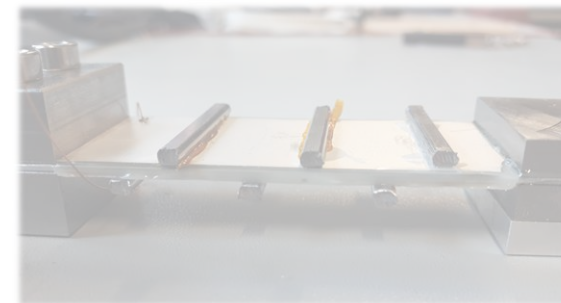
1. Context



2. Solution and simulations

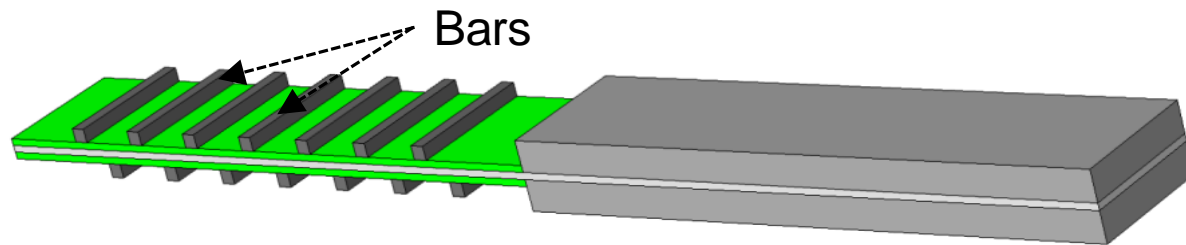
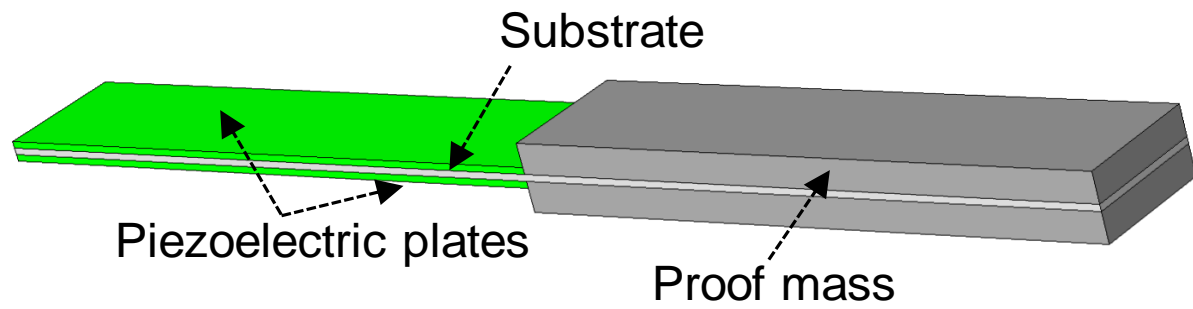


3. Experimental validation

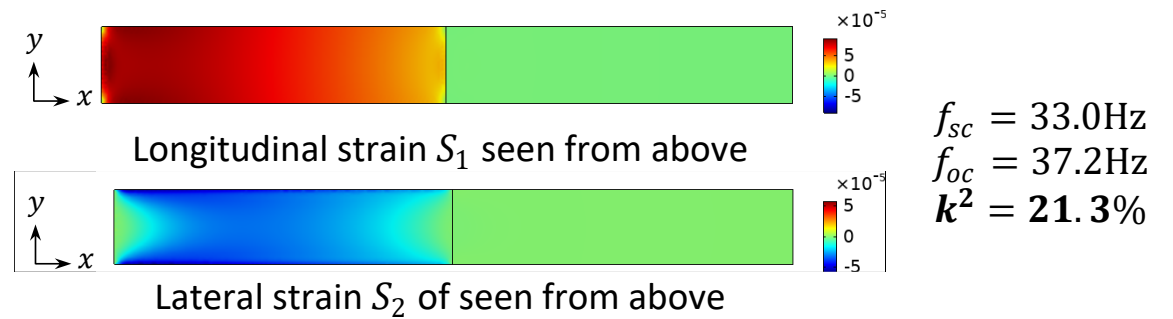


Proposal : adding lateral bars to reduce lateral strain for narrow beams

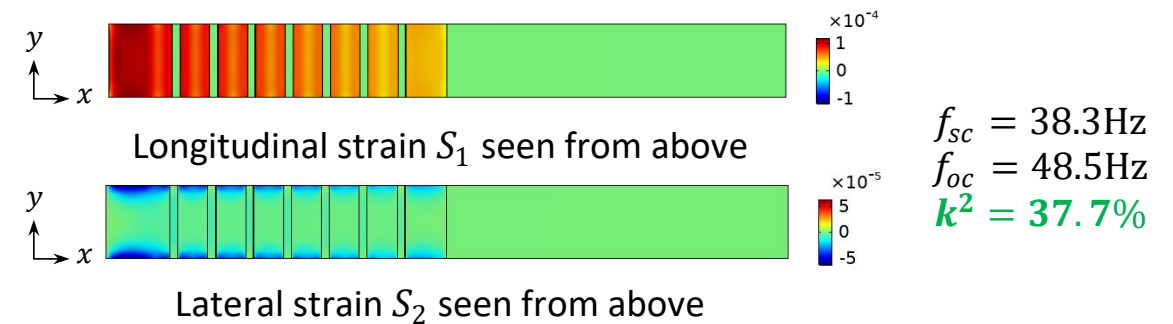
Example with PMN-PT Material on Comsol (FEM)

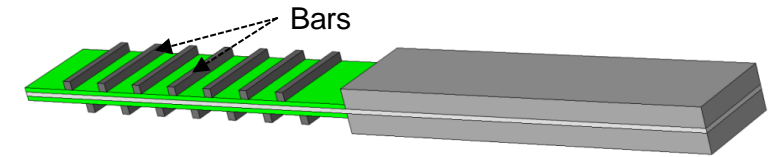


Without bars



With bars





The improvement of the coupling depends on

- **The initial cantilever**

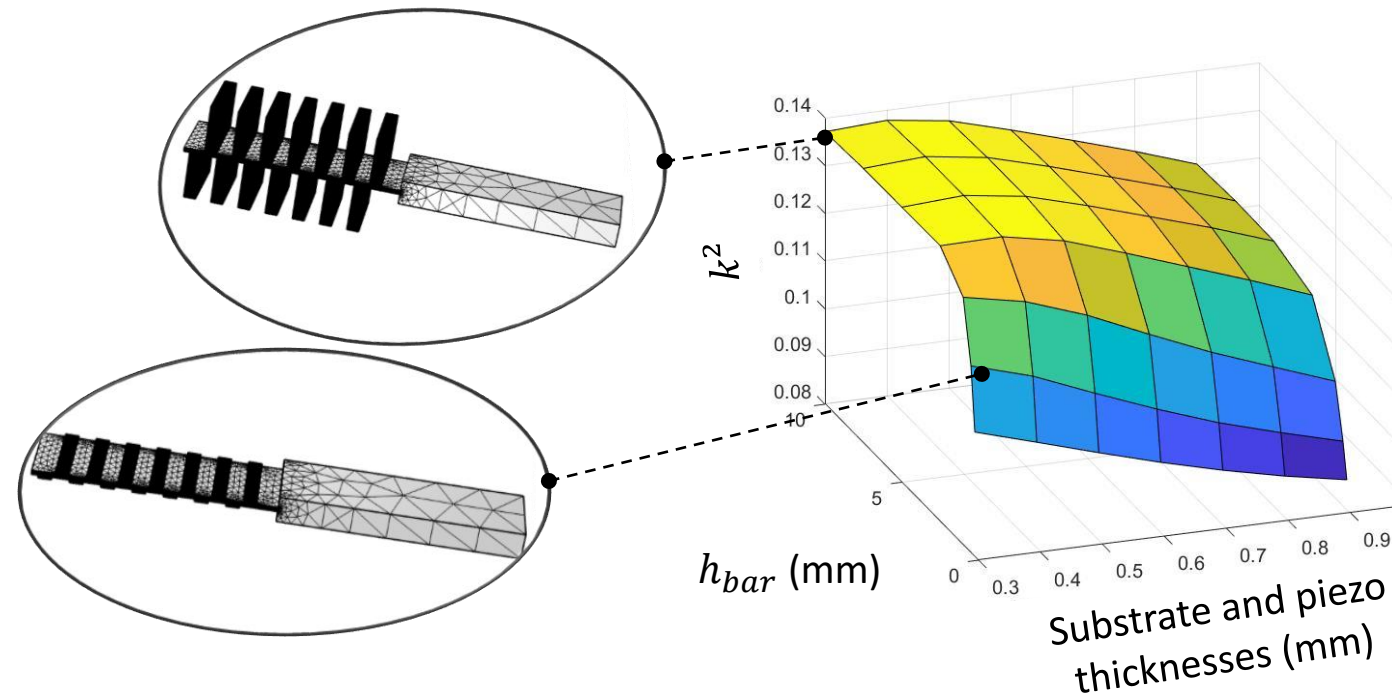
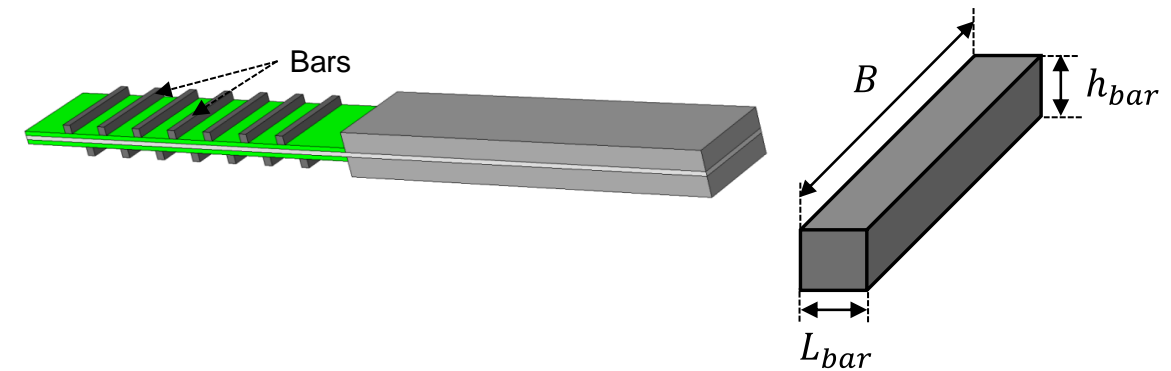
- Coupling coefficients k_{31}^l and k_{31}^w of the piezoelectric material,
- The stiffness of the piezoelectric material and the substrate
- The geometry (length of the beam, mass and thickness of the piezoelectric materials and the substrate)

- **The bars**

- Dimensions (height h_{bar} , length L_{bar})
- The stiffness of the material of the bars
- Number and arrangement (distance between each bar, staggered or face to face arrangement)

Parametric study

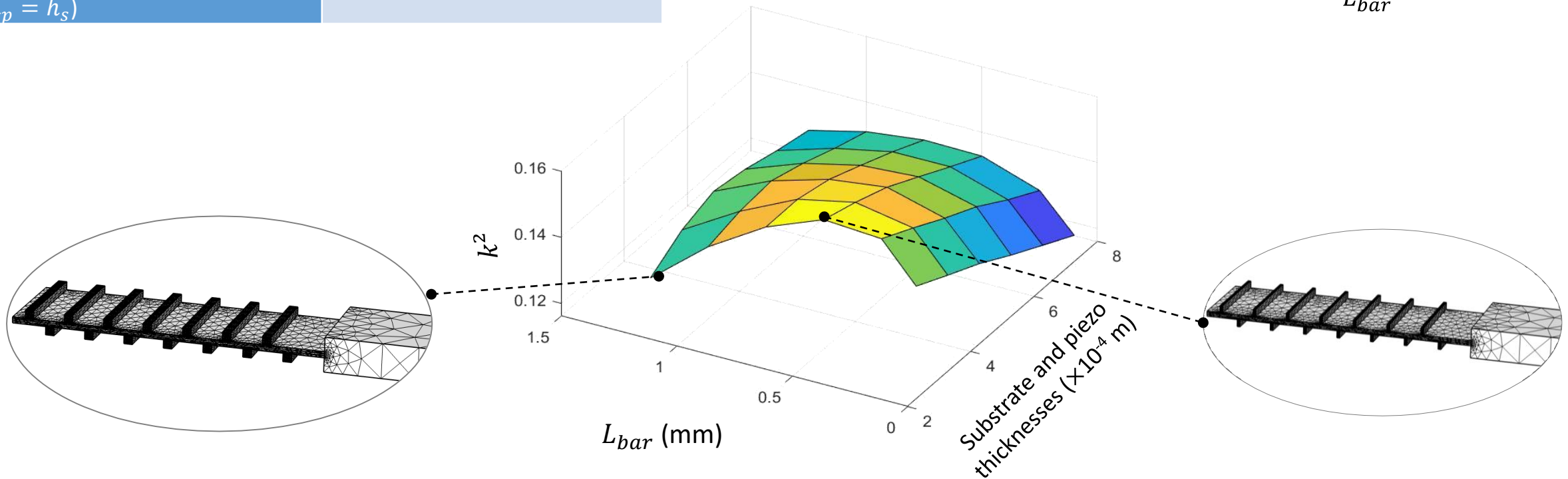
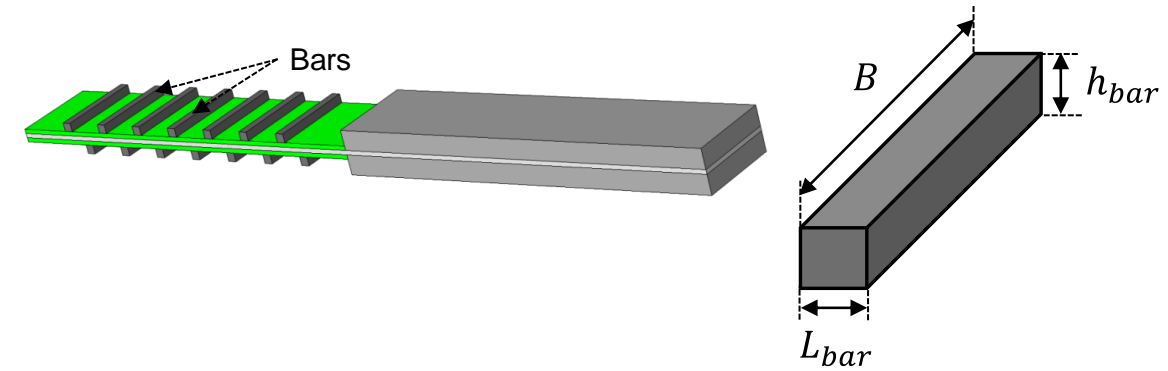
Fixed parameters	Values
Materials	PZT 4 and steel
Beam width	15 mm
Bar width L_{bar}	1 mm
Beam length	45 mm
Variable parameters	
Bar thickness h_{bar}	0.25-0.5-1-2.5-5-7.5-10 mm
Substrate and piezo thicknesses ($h_p = h_s$)	0.3-0.4-0.5-0.6-0.7-0.8-0.9mm



h_{bar} could be maximized and a plateau is reached

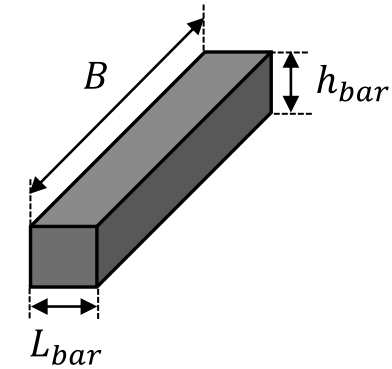
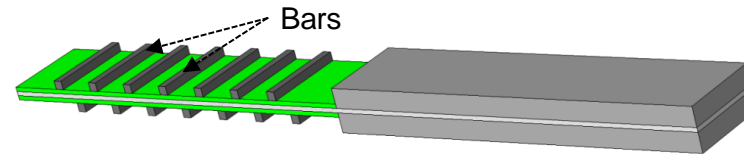
Parametric study

Fixed parameters	Values
Materials	PZT 4 and steel
Beam width	15 mm
Bar thickness h_{bar}	$4 \times$ substrate thickness h_s
Beam length	45 mm
Variable parameters	
Bar width L_{bar}	0.1-0.25-0.5-0.75-1-1.25 mm
Substrate and piezo thicknesses ($h_p = h_s$)	0.3-0.4-0.5-0.6-0.7-0.8 mm



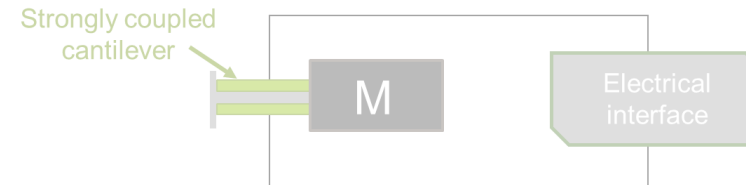
An optimal value of L_{bar} exists

According to our first studies, the bars should cover around 8 % of the beam length

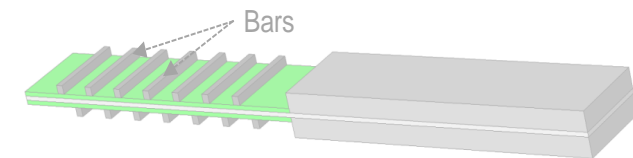


Parameters	Optimal configuration
Bar thickness h_{bar}	At least $4 \times$ substrate thickness (h_s)
Bar width L_{bar}	Around 8 % of the beam length
Number of bars	At least 3 one each side. No significant tendency with more bars
Arrangement (staggered of face to face)	No significant tendency

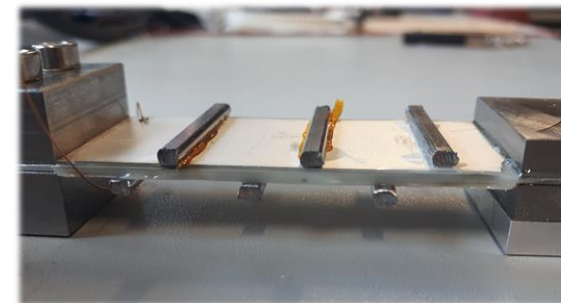
1. Context



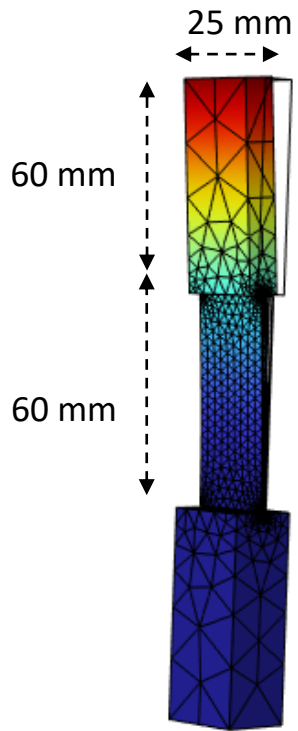
2. Solution and simulations



3. Experimental validation



Prototype



$$f_{sc} = 26.6 \text{ Hz}$$

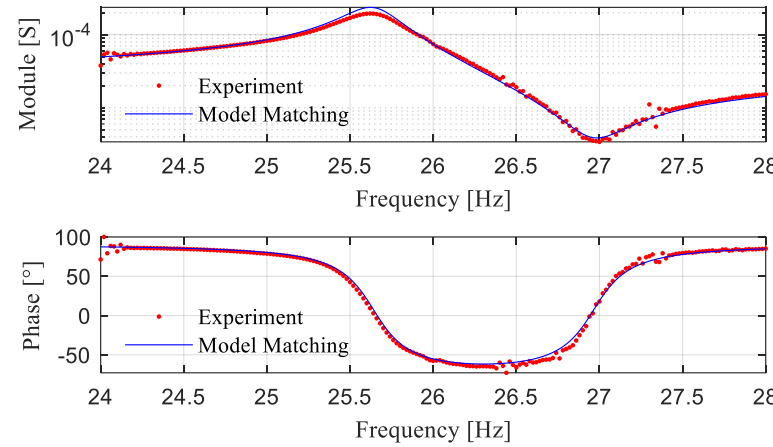
$$k^2 = 10.5 \%*$$

$$f_{sc} = 25.6 \text{ Hz}$$

$$k^2 = 9.5 \%$$

* Considered glue thickness of 100 μm between the piezoelectric plates and the substrate, and considered distance of the piezoelectric plates from clamp of 500 μm

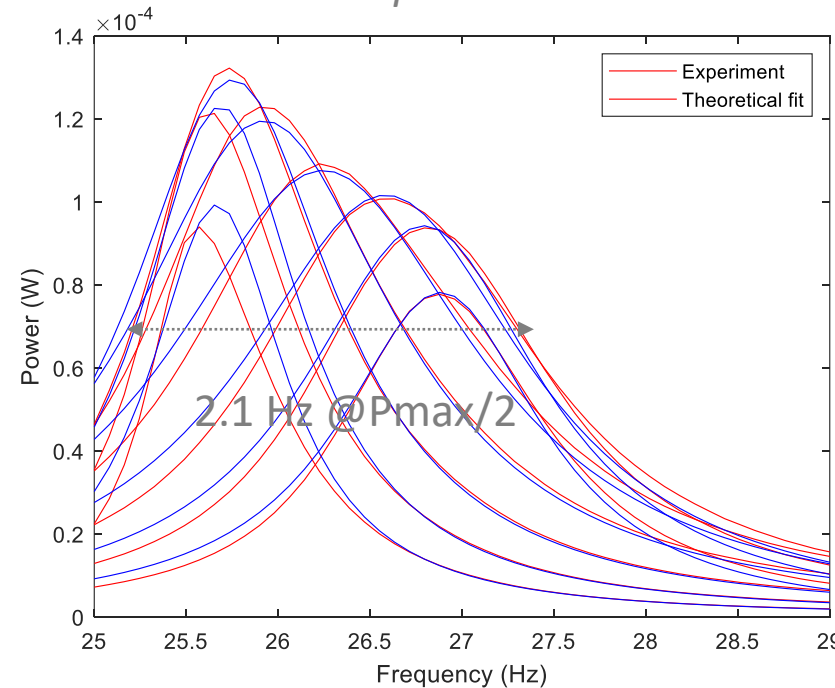
Measure admittance and fit



Bimorph :

- 1 mm thick aluminum substrate
- 2 \times 0.5 mm thick PZT 5H plates
- 10 mm thick steel proof mass

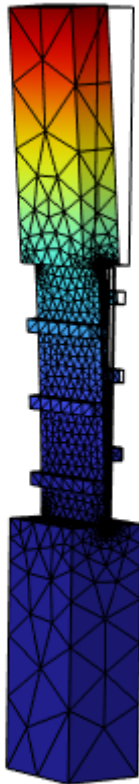
Measured mean power on resistive loads and fit



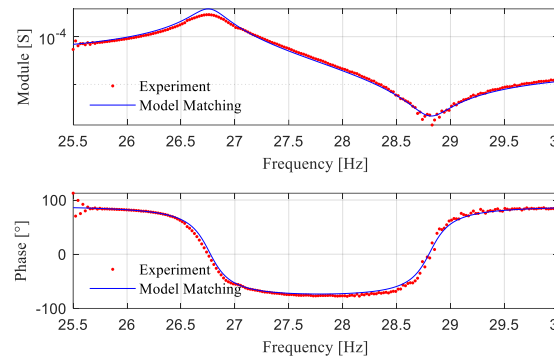
$P_{max} = 130 \mu\text{W} @ 0.2 \text{ m/s}^2$

8.5 % bandwidth at $P_{max}/2$

Results

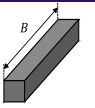


Measure admittance and fit

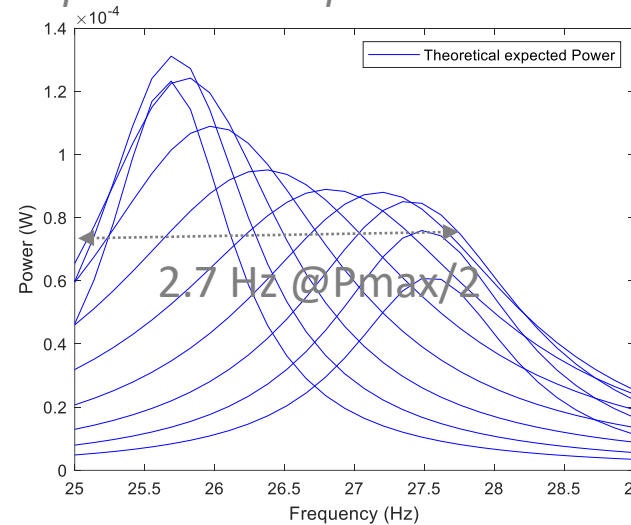


6 Bars:

- 2 mm x 3 mm steel bars
- 3 on each side
- staggered arrangement



Expected mean power on resistive loads



$P_{max} = 130 \mu W @ 0.2 \text{ m/s}^2$

10.5 % bandwidth at $P_{max}/2$

k^2 is multiplied by 1.42 with the bars (from 9.5 % to 13.7%)

The bandwidth is expected to be multiplied by 1.23

$$f_{SC} = 28.2 \text{ Hz}$$

$$k^2 = 14.3 \%^*$$

$$f_{SC} = 26.7 \text{ Hz}$$

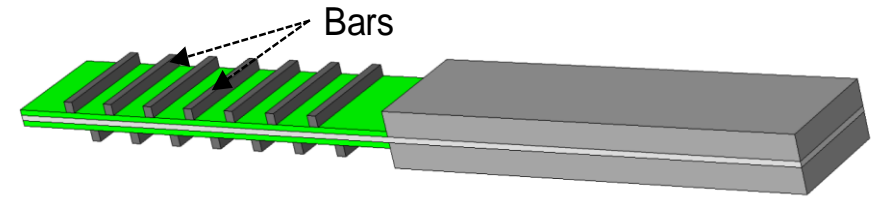
$$k^2 = 13.7 \%$$

* Considered glue thickness of 100 μm between the bars and the piezoelectric plates

Conclusion

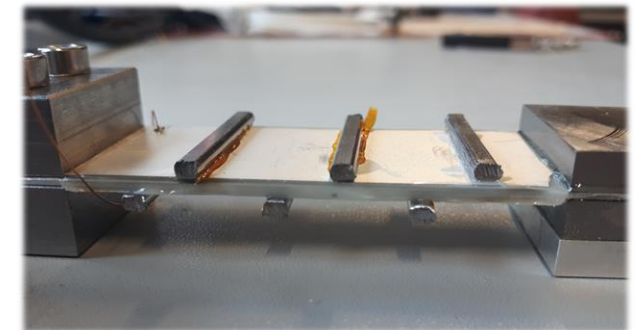
An innovative design was presented for maximizing the coupling

- to maximize the power
- to maximize the frequency bandwidth



Experimental validation was made with PZT 5H

- $\times 1.42$ on the electromechanical coupling coefficient k^2
- $\times 1.24$ expected on the frequency bandwidth



Prospects

- Deeper analysis of the materials impact
- Validation with lead free materials

ΕΥΧΑΡΙΣΤΩ

(Thank you)

D. Gibus, L. Tourtelier-Gallo, P. Gasnier, A. Morel, O. Freychet, A. Badel
david.gibus@univ-smb.fr



SYMME

