



HAL
open science

Description of two new species, with synonymies and
new distribution records, for some species of African
Prosopocera Blanchard and Eunidia Erichson
(Coleoptera, Cerambycidae, Lamiinae)

Riana Bate, Jérôme Sudre, Michael D. Bate

► To cite this version:

Riana Bate, Jérôme Sudre, Michael D. Bate. Description of two new species, with synonymies and new distribution records, for some species of African *Prosopocera* Blanchard and *Eunidia* Erichson (Coleoptera, Cerambycidae, Lamiinae). *Faunitaxys*, 2023, 11 (62), pp.1-19. hal-04216372

HAL Id: hal-04216372

<https://hal.science/hal-04216372v1>

Submitted on 24 Sep 2023

HAL is a multi-disciplinary open access archive for the deposit and dissemination of scientific research documents, whether they are published or not. The documents may come from teaching and research institutions in France or abroad, or from public or private research centers.

L'archive ouverte pluridisciplinaire **HAL**, est destinée au dépôt et à la diffusion de documents scientifiques de niveau recherche, publiés ou non, émanant des établissements d'enseignement et de recherche français ou étrangers, des laboratoires publics ou privés.



Distributed under a Creative Commons Attribution - NonCommercial - NoDerivatives 4.0
International License

Faunitaxys

*Revue de Faunistique, Taxonomie et Systématique
morphologique et moléculaire*



Volume 11
Numéro 62

Septembre 2023

ISSN (Print) : 2269 - 6016
ISSN (Online) : 2970 - 4960
Dépôt légal : Septembre 2023

Faunitaxys

*Revue de Faunistique, Taxonomie et Systématique
morphologique et moléculaire*

ZooBank : <http://zoobank.org/79A36B2E-F645-4F9A-AE2B-ED32CE6771CC>

Directeur de la publication, rédacteur, conception graphique et PAO:

Lionel Delaunay

Cette revue ne peut pas être vendue

Elle est distribuée par échange aux institutions (version papier)

et sur simple demande aux particuliers (format PDF)

à l'adresse suivante:

AFCFF (Association française de Cartographie de la Faune et de la Flore)

28, rue Voltaire, F- 42100 Saint Etienne

E-mail: faunitaxys.journal@gmail.com

Elle est disponible librement au téléchargement à partir du site:

<http://faunitaxys.fr/>

La parution de *Faunitaxys* est apériodique

Faunitaxys est indexé dans / *Faunitaxys* is indexed in:

- **Zoological Record**

Articles and nomenclatural novelties are referenced by:

- **ZooBank** (<http://zoobank.org>)

Online Archives:

- **HAL** (<https://hal.archives-ouvertes.fr>)

- **Internet Archive** (<https://archive.org>)

Imprimée sur les presses de SPEED COPIE, 6, rue Tréfilerie, F- 42100 Saint-Etienne

Imprimé le 24 09 2023

Description of two new species, with synonymies and new distribution records, for some species of African *Prosopocera* Blanchard and *Eunidia* Erichson (Coleoptera, Cerambycidae, Lamiinae)

RIANA BATE (1,*), JÉRÔME SUDRE (2) & MICHAEL D. BATE (3)

(1 & 3) Geovicon Environmental (Pty) Ltd. P.O. Box 4050, Middelburg, Mpumalanga, 1050, South Africa

(1) - E-mail: rbate1960@gmail.com - Orcid: <https://orcid.org/0000-0003-1084-359X> - ZooBank: <https://zoobank.org/C7AF5A68-39B5-44F2-8B5F-E469AA78EDA4>

(2) 6 rue Jules Guesde, F-34080 Montpellier, France. – jsudre@hotmail.com - ZooBank : <https://zoobank.org/08184D6D-3B94-4C47-9706-7CCB7AC259AA>

(3) - ZooBank: <https://zoobank.org/AF79BD88-851A-4340-87A9-1E22AB3DDE69>

* Corresponding author

Keywords:

Coleoptera;
Cerambycidae;
Lamiinae;
Prosopocera;
ndumoensis;
Eunidia;
albomaculata;
taxonomy;
new synonymies;
new species;
distribution;
Africa.

Abstract. – New information on several African Lamiinae is provided. The following synonyms are proposed: *Prosopocera (Alphitopola) albosignata* Breuning, 1938 and *P. (A.) bicornuta* Breuning, 1971 are synonymized with *P. (A.) paykullii* (Fåhraeus, 1872); *P. (Dalterus) matillai* Báguena, 1952 is synonymized with *P. (A.) gahani* (Aurivillius, 1925); *P. (D.) holoflava* Breuning, 1981 is synonymized with *P. (A.) infragrisea* Breuning, 1950; *Eunidia diversipes* Breuning, 1961 is synonymized with *E. timida* Pascoe, 1864; *E. jeanneli* Breuning, 1939 is synonymized with *E. pygmaea* Fåhraeus, 1872; *E. vagefasciata* Breuning, 1955 is synonymized with *E. subfasciata* Gahan 1898; *E. flavoornata* Breuning, 1981 is synonymized with *E. thomsoni* Distant, 1898; *E. obliquealbovittata* Hunt & Breuning, 1957 is synonymized with *E. fasciata* Gahan, 1904; *E. mediomaculatoidea* Breuning, 1981 is synonymized with *E. bifasciata* Aurivillius, 1911; *E. subnebulosa* Breuning, 1961 is synonymized with *E. flavomarmorata* Breuning, 1939; *E. olivacea* Breuning, 1954 is synonymized with *E. albopicta* Breuning, 1939; *E. politzari* Siess, 1981 is synonymized with *E. similis* Breuning, 1942; *E. deceptrix camerunica* Teocchi, 1994 and *E. deceptrix gaboncola* Teocchi, Jiroux & Sudre, 2004 are synonymized with *E. lujai* Breuning 1951. Two new species are described from South Africa: *P. (D.) ndumoensis* **sp. nov.** and *E. albomaculata* **sp. nov.**

Bate R., Sudre J. & Bate M. D., 2023. – Description of two new species, with synonymies and new distribution records, for some species of African *Prosopocera* Blanchard and *Eunidia* Erichson (Coleoptera, Cerambycidae, Lamiinae). *Faunitaxys*, 11(62): 1 – 19.

DOI: [https://doi.org/10.57800/faunitaxys-11\(62\)](https://doi.org/10.57800/faunitaxys-11(62))

ZooBank: <https://zoobank.org/347A754A-D1A3-446E-B703-1FEFE3152BAD>

Received: 07/08/2023 – Revised: 15/09/2023 – Accepted: 16/09/2023

Introduction

During numerous visits to the South African National Collection of Insects and the Ditsong National Museum of Natural History, both in Pretoria, we had the opportunity to study and obtain loans of both identified and unidentified material of Cerambycidae: Lamiinae. Information collated, together with personal observations and photographs of type material housed in various collections and museums around the world, has led to the discovery of new synonyms. We here propose new synonyms and distribution records for taxa belonging to the genera *Prosopocera* Blanchard and *Eunidia* Erichson, and present two undescribed species from South Africa.

Abbreviations of specimen repositories

Recognised codens are taken from: The insect and spider collections of the world website, Evenhuis (2002).

CBR - Collection Bruno Le Ru, Les Matelles, France.

CEJ - Collection Eric Jiroux, France.

CJS - Collection Jérôme Sudre, France.

CTG - Collection Thierry Garnier, France.

CPMM - Dr. Álvaro de Castro Provincial Museum, Lourenço Marques (Maputo), Mozambique.

MHNG - Muséum d'Histoire Naturelle, Genève, Switzerland.

MNCN - Museo Nacional de Ciencias Naturales, Madrid, Spain.

MNHN - Muséum National d'Histoire Naturelle, Paris, France.

MSNM - Museo Civico di Storia Naturale, Milano, Italy.

NHMUK - The Natural History Museum [formerly British Museum (Natural History)], London, United Kingdom.

NHMB - Naturhistorisches Museum, Basel, Switzerland.

Reviewers :

Larry G. Bezark (USA) - ZooBank : <http://zoobank.org/25C35904-2035-4416-9534-8641C1551196>



This is an open access article under the terms of the Creative Commons Attribution-NonCommercial-NoDerivs License, which permits use and distribution in any medium, provided the original work is properly cited, the use is non-commercial and no modifications or adaptations are made.

Copyright 2023 The Authors. *Faunitaxys* published by Lionel Delaunay on behalf of the AFCFF (Association française de Cartographie de la Faune et de la Flore).

NHRS - Naturhistoriska Riksmuseet, Stockholm, Sweden.

RMCA - Musée Royal de l'Afrique Centrale, Tervuren, Belgium.

SAMC - Iziko Museum of Capetown (formerly South African Museum), Cape Town, South Africa.

SANC - South African National Collection of Insects, ARC-PPRI, Pretoria, Gauteng.

TMSA - Ditsong National Museum of Natural History (formerly Transvaal Museum), Pretoria, Gauteng, South Africa.

Acronyms

DRC - Democratic Republic of the Congo

GAU - Gauteng Province, RSA

KNP - Kruger National Park, RSA

KZN - KwaZulu-Natal Province, RSA

LIM - Limpopo Province, RSA

NCape - Northern Cape Province, RSA

NW - North West Province, RSA

RSA - Republic of South Africa

Material & Methods

This study is based on the examination of pinned male and/or female specimens, housed in the SANC, TMSA and CJS entomological collections, as well as personal observations of a variety type specimens. Where type specimens could not be examined personally, high-resolution photographs of dorsal, lateral and/or ventral views of the type specimens were obtained from those institutions in which they are housed. Unless otherwise indicated, photos were taken by one of the authors, M.D Bate.

To extract the male genitalia, pinned specimens were first steamed with distilled water for approximately 20 minutes, to soften and rehydrate the specimen. Extracted genitalia were then placed in a hot 10% KOH solution for approximately 15 minutes, dissected and rinsed in distilled water, and there after transferred to glycerol. Photographs were taken with a Canon EOS 5Ds mounted on a Zeiss Stemi 508 Microscope, and stacked to enhance depth of field, using Photoshop cc software. Measurements are in millimetres, obtained with the measuring tool in ImageJ software. Body length is the total length measured from the anterior margin of the clypeus to the apex of elytra; body width is the maximum width as measured at the humeri.

All dissected structures are preserved in glycerol, in a small plastic vial, attached to the same mounting pin as that of the specimen. Hand written "type labels" are attached to specimens of the newly described species, deposited either in the SANC or TMSA collections, as indicated in the text.

Taxonomy

Tribe *Prosopocerini*

Genus *Prosopocera* Blanchard, 1845: 160

Prosopocera (Alphitopola) paykullii (Fåhraeus, 1872)

(Fig. 1a-f)

Zalatida paykullii Fåhraeus, 1872: 34 (Aurivillius, 1922: 161).

Alphitopola lapidaria Distant, 1898: 374 (Aurivillius, 1922: 161; Breuning, 1936: 168, 214) (Fig. 1a&b).

Prosopocera (Alphitopola) paykullii (Fåhraeus, 1872) in: Breuning, 1936: 168, 214.

Prosopocera (Alphitopola) paykullii Fåhraeus m. *conjux* Breuning, 1938: 35 (Forchhammer & Breuning, 1986: 21).

Prosopocera (Alphitopola) albosignata Breuning, 1938: 35-36 **syn. nov.**

Prosopocera (Alphitopola) bicornuta Breuning, 1971: 3 **syn. nov.**

Chorology

The original description is based on specimens from Caffraria [RSA] (Fåhraeus, 1872).

Republic of South Africa

GAU

- 1 ♂, Pretoria, *leg.* W.L.D.[Distant] ex Distant Coll 1911-383, (syntype: *A. lapidaria*) (NHMUK);

- Pretoria District, Soutpan, 21.xi.1992 (Adlbauer, 1997);

idem, 1 ♀, 25°24'S, 28°06'E, 9.xii.1987, *leg.* M.W. Mansell (SANC);

idem, 1 ♂, 1 ♀, 20.xi.1985, *leg.* M.W. Mansell (SANC);

- 1 ♂, Ezemvelo, Telperion, 25°42'S, 29°00'E, 9.i.2009, *leg.* D. MacFadyen (TMSA);

- 1 ♂, 1 ♀, Roodeplaat; 26.xi.1969, *leg.* H.D. Naude (SANC);

- 1 ♂, Hennops River District, Portion 53 of Vlakplaas, 24.xi-24.xii.2008, *leg.* M. Paulsen (TMSA).

KZN

- 1 ♂, Hluhluwe, 07.xi.1928, *leg.* Marley, holotype : *P. (A.) albosignata* (TMSA) (Fig. 1e&f);

- 1 ♂, Scottburgh, i.1913, holotype: *P. (A.) albosignata* var. *connexa* Det. Gilmour, (NHMUK);

- Richards Bay Minerals, 18°38'S, 32°15'E, 33 m, ii.1987, UV, (Téocchi *et al.*, 2015b);

idem, 42 km southeast of Ingwavuma, 27°16'52"S, 32°07'32"E, 110 m, UV;

- 1 ♂, 1 ♀, Ndumu Game Reserve, 26°54'S, 32°15'E, 05-07.xi.1984, *leg.* R. Oberprieler (SANC);

- 1 ♀, Ntinini Nature Reserve, 28°16'S, 30°55'E, 1.xii.2010, *leg.* Ruth Müller (TMSA);

- 1 ♂, Mkuze; 27°37'S, 32°03'E, i.1982, *leg.* P. Reavell (SANC);

- 1 ♀, Durban, 1908, *leg.* F. Leigh (SANC);

- 1 ♂, Durban, Malvern North, 11.i.1998, (SANC).

LIM

- 1 sp., Warmbaths [Bela-Bela], xii.1997, bequest. T. Beyers (CJS);

- Mica, i.2002, (Téocchi *et al.*, 2015b);

- Nyala Game Ranch, southeast, 28 31 Da, 16.xii.1980, (*idem*);

- 2 ♀, Fiesta Motel, 20 km south of Potgietersrus (Adlbauer, 1997);

- 1 ♀, Ellisras District, D'Nyala Nature Reserve., 23°45'S, 27°49'E, 18-20.xii.1987, *leg.* E. van der Linde (SANC);

idem, 1 ♂, 18.xii.1987, M.W. Mansell (SANC);

idem, 1 ♂, 1 ♀, 13-14.i.1991, *leg.* B. Grobbelaar (SANC);

idem, 1 ♂, 18-20.xii.1987, *leg.* E. van der Linde (SANC);

- 1 ♀, KNP, Shirombe Pan; 22°44'S, 31°24'E, 24.i.1984, *leg.* M.W. Mansell (SANC);

- 1 ♂, KNP, Skukuza, 17.i.1995, *leg.* Endrödy Younga (CJS);

- 1 ♂, KNP, Skukuza, 14.i.1968, *leg.* E. Brinkman (SANC);

- 1 ♀, KNP, Skukuza Rest Camp; 25°00'S, 31°35'E, 8-22.xii.2009, *leg.* J. du Toit & G. Harrison (TMSA);

- 1 ♂, KNP, Letaba, 15.i.1965, *leg.* A.L. Capener (SANC);

- 1 ♀, Zebediela, 26-30.x.1970, *leg.* T.W. Drinkwater (SANC);

- 1 ♀, Hans Merensky Nature Reserve, 23°40'S, 30°39'E, 27-30.xi.1981, *leg.* R.G. Oberprieler (SANC).

MPU

- 1 sp., Lydenburg Dist., *leg.* Zutrenka, syntype: *A. lapidaria* Det. Distant, 1898 (NHMUK);

- 1 ♀, [Ehlanzeni District?] Three Sisters, 25.ii.1911, *leg.* A.J.T. Janse, holotype: *P. paykullii* m. *conjux* Breuning, 1938 (TMSA) (Fig. 1c&d);

- 1 ♀, Nelspruit, 25°45'26"S, 28°30'34"E, 28.iii.2015, *leg.* M. Janssen (SANC);

- 1 ♂, Weltevreden farm near Nelspruit, 25°34'S, 31°10'E, 21-24.i.1990, *leg.* R.G. Oberprieler (SANC);

- 1 ♂, Pullen Farm [near Nelspruit], 25°34'S, 31°13'E, 24-26.xi.2004, *leg.* M. Krüger (TMSA);

- 1 ♀, Presidentsrus, 25°45'33"S, 29°19'05"E, 24.x.2016, *leg.* M.D. & J.M. Bate (SANC);

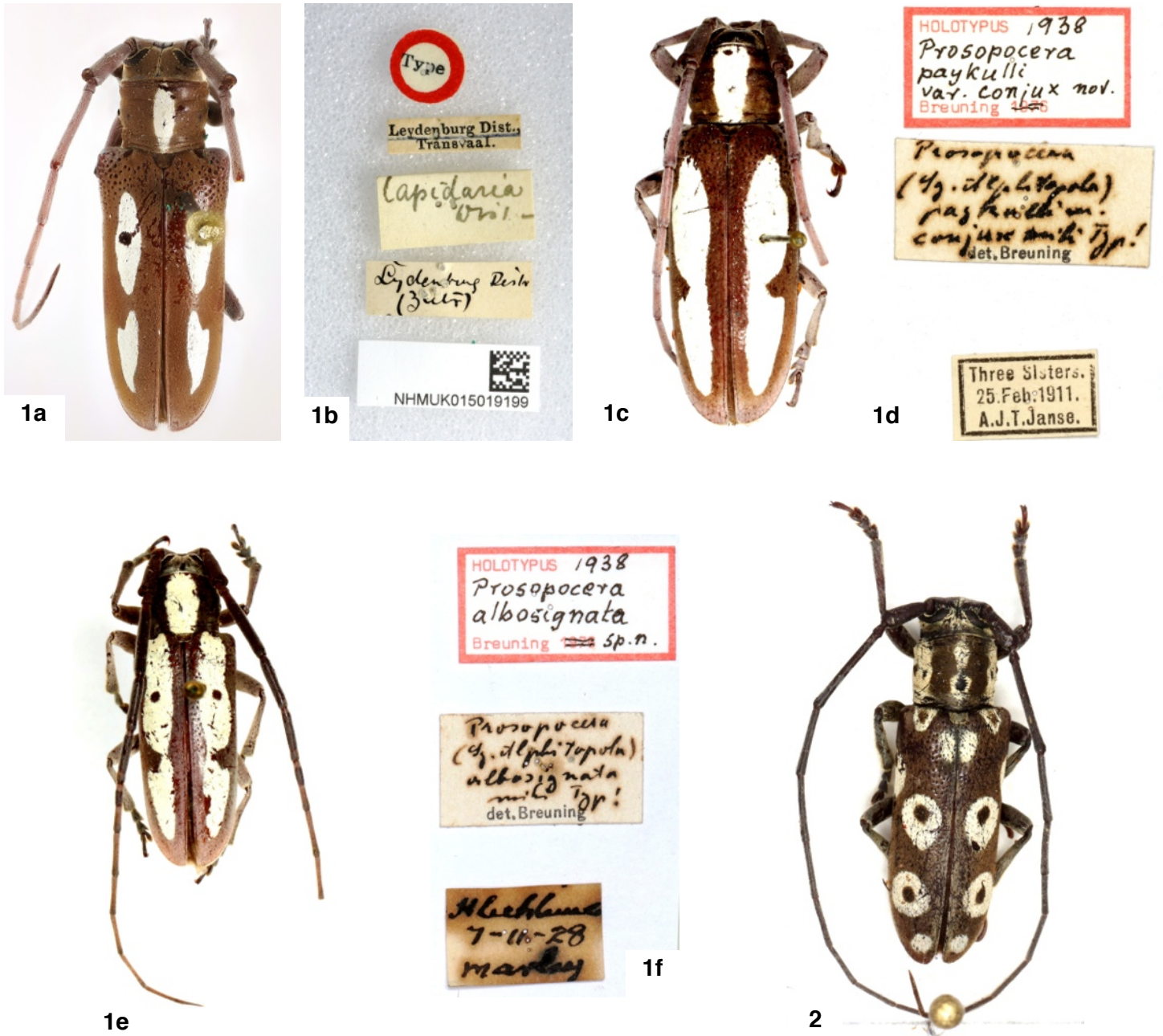


Fig. 1. *Prosopocera (Alphitopola) paykullii* (Fåhraeus, 1872).

1a. *Alphitopola lapidaria* Distant, 1898 syntype, ♀ (NHMUK), length 18 mm. **1b.** *A. lapidaria* syntype labels. **1c.** *P. (A.) paykullii* Fåhraeus m. *conjux* Breuning, 1938 holotype ♀ (TMSA), length 17 mm. **1d.** *P. (A.) paykullii* m. *conjux* holotype labels (TMSA). **1e.** *P. (A.) albosignata* Breuning, 1938 holotype ♂, length 15 mm. **1f.** *P. (A.) albosignata* holotype labels.

Fig. 2. *Prosopocera (Alphitopola) bettoni* (Gahan, 1898), ♂, length 14 mm.

- 1 ♀, Barberton, 1905, leg. D. de Beer (SANC);
- 1 ♂, Luiper[d]shoek Farm near Roossenekal, 25°07'S, 29°50'E, 22.xi.1989, leg. L.G. le Roux (SANC);
- 1 ♂, Mahushe Shongwe Nature Reserve, 25°45'S, 31°44'E, 04-05.ii.1995, leg. Chown, Stals & Browne (SANC).

NW

- 1 ♀, Zeerust, 25°32'S, 26°5'E, 20.xii.2007, leg. G. Lussmann (SANC).

NCape

- 1 ♀, 18.5 km West of Postmasburg, 28°19'43"S, 22°52'45"E, 10.ii.2019, leg. M.D. Bate, *P. (A.) paykullii* det. M.D & J.M. Bate, 2019 (SANC).

Botswana

- Swaneng Hill School, 4 km southeast Serowe, 22 26 Bc, 28.xi.1977, 7-11.xii.1977, 28.xi.1978, 13.i.1980, at Ultraviolet (Forchhammer & Breuning, 1986).

Mozambique

- 1 ♂, Porto Henrique, 30.xi.1968, leg. W. R. Ferreira, type: *Prosopocera (Alphitopola) bicornuta* Breuning, 1971 (CPMM) specimen not found.

Zambia

- 1 ♂, Bruce-Miller farm near Choma, 16°38'2"S, 27° 01'5"E, leg. B.D. Gill & S.M.V. Gussman (SANC).

Zimbabwe

- Turk Mine, i.1957 (Téocchi *et al.*, 2015b);
- Lake Kyle, 30.xi.1992 (Adlbauer, 1997);
- 1 ♂, Matopos Siding, 20°27'S 28°30'E, 4.xii.1990, leg. M.W. Mansell, R.B. Miller & L.A. Stange (SANC);
- 1 sp., Nyagi Rivers Val[ley], 50 km East Bindura, xii.1998, leg. Kantner (CJS).

Comments. – Gemminger & Harold (1873) misspelt the species name *pakulli*[i] in their catalogue, an error that has been perpetuated by subsequent authors e.g.: Aurivillius (1922), Breuning (1936, 1938, 1959), Adlbauer (1997), and Téocchi *et al.* (2015b).

Study of a series of specimens from this taxon showed that in the ♂, the fronto-clypeal horn may be: undeveloped (missing); represented by a small, short medial lateral ridge which may be divided in the centre (giving an impression of two small horns); or have the form of a small short bifurcated horn. In the ♂ and ♀, the marking on the elytral disc is variable in size and shape; the pre-median white laterally elongated maculae may extend from the base of the elytron, or only start between the base and the apical third; or be distinctly separated from the white basal maculae; or occur as a single laterally elongated macula with a distinct indentation indicating where the pre-median and basal maculae join. Further, the black dot situated within the pre-median white maculae on the disk varies in size and colour (from black to brown), and is sometimes absent.

The type specimen of *P. (A.) bicornuta* could not be located in the Entomological collection of Musée du Dr. Álvaro de Castro, Maputo (CPMM) (pers. comm. curator: Dr. Bernardo Muatinte), however, the description by Breuning (1971), as well as the accompanying drawing representing the type, leaves no doubt as to the synonymy of this species with *P. (A.) paykullii*.

Distribution. – Téocchi *et al.* (2015b: 100) incorrectly cited a *P. (A.) paykulli* specimen collected from the Fiesta Motel 20 km South of Potgietersrus (Adlbauer, 1997), as occurring in Tanzania. The correct location for this specimen is RSA: LIM. There is currently no record of this taxon occurring in Tanzania. The known distribution includes Botswana, RSA: GAU, MPU, LIM, KZN and Zimbabwe (Adlbauer (1997), Téocchi *et al.* (2015b)), which is enhanced by our addition of Mozambique (**type**), RSA: NCape and Zambia.

Prosopocera (Alphitopola) bettoni (Gahan, 1898)

(Fig. 2)

Alphitopola bettoni Gahan, 1898: 52 (Breuning, 1936: 215).

Comments. – A male specimen of this taxon was collected in RSA: LIM, Pafuri River Camp, 22°25'S, 31°02' E, 27-28.i. 2017 *leg.* Ruth Müller (TMSA). *Prosopocera (A.) bettoni* was previously only known from Kenya and Tanzania (Breuning, 1936), we add RSA: LIM to its distribution.

Prosopocera (Alphitopola) gahani (Aurivillius, 1925)

(Fig. 3a-d)

Alphitopola gahani Aurivillius, 1925: 3.

Prosopocera (Alphitopola) gahani (Aurivillius, 1925) in Breuning, 1936: 166, 213 (Téocchi, 1994b: 118; 2000a: 640; Téocchi *et al.*, 2014a:19 & Fig. 7; Vittali 2000: 15 & Fig. 2)

Prosopocera (Alphitopola) postscutellaris Breuning, 1961a: 251 (Téocchi, 1994b: 118).

Prosopocera (Timoreticus) matillai Báguena, 1952: 42-43 (Breuning, 1959: 100; Báguena & Breuning, 1962: 164) **syn. nov.**

Comments. – The type specimen of *Prosopocera (Alphitopola) gahani* (Aurivillius, 1925) housed in the NHRS has a collection locality label “Ituru omrad” [Ituru area], a town in Kenya. Aurivillius, 1925 and Téocchi, 1994b both indicate the type specimen collection location of *P. (A.) gahani* as Kartoushi in the Semliki Valley of the former Zaire (Now the Democratic Republic of the Congo). It should also be noted that there are no collection records of *P. (A.) gahani* from Kenya (eg. Aurivillius, 1925; Téocchi, 1994b; Téocchi, 2000a; Delahaye *et al.*, 2000; Téocchi *et al.*, 2014a). We are thus of the belief that the “collection location label” has been mis applied to the NHRS type specimen. The comparison of the type specimens of *A. gahani* (NHRS) (Fig. 3a&b) and *P. (T.) matillai* from Equatorial Guinea, Evinayong (MNCN) (Fig. 3 c&d) leaves no doubt as to their synonymy.

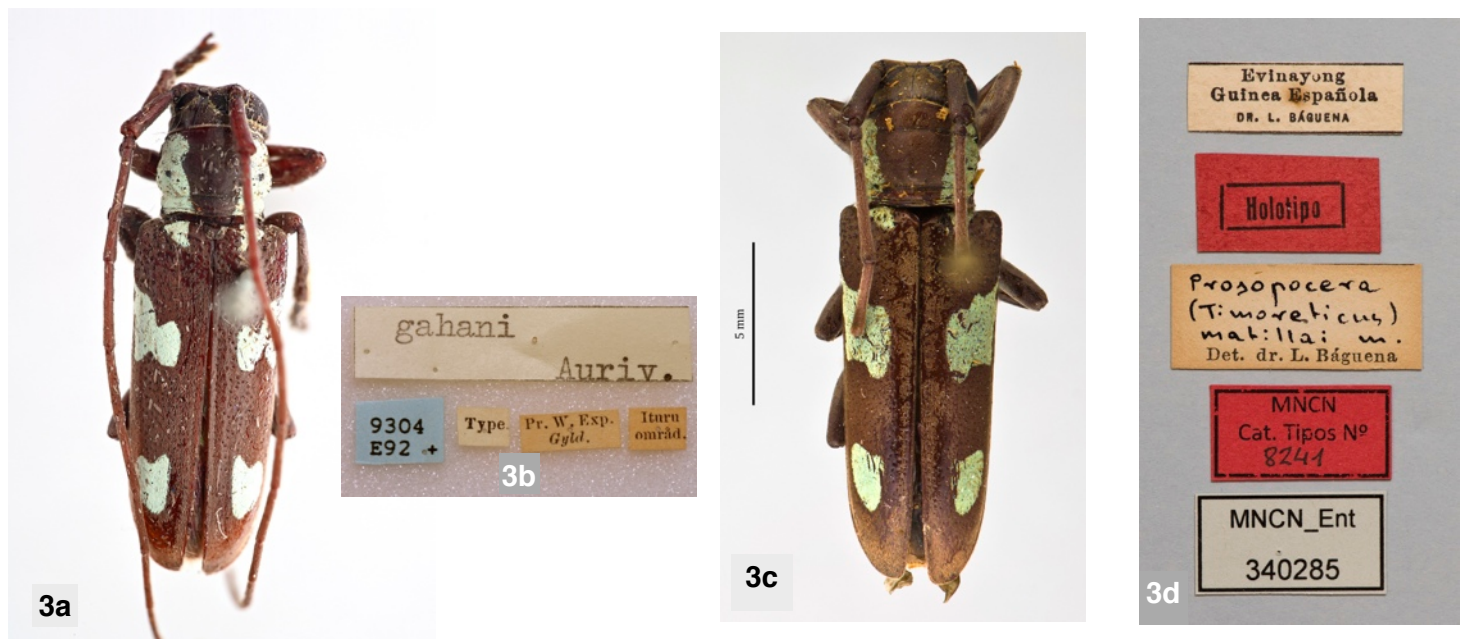


Fig. 3. *Prosopocera (Alphitopola) gahani* (Aurivillius, 1925).

3a. *A. gahani* Aurivillius, 1925 syntype, ♂ (NHRS). **3b.** *A. gahani* syntype labels. **3c.** *P. (T.) matillai* Báguena, 1952 holotype (MNCN). **3d.** *P. (T.) matillai* holotype labels.

Distribution. – The known distribution for this species is Cameroon, DRC (type), Gabon and Ivory Coast (Téocchi, 2000a; Delahaye *et al.*, 2000), and we have enhanced this by the addition of Equatorial Guinea (type).

***Prosopocera (Alphitopola) infragrisea* Breuning, 1950**

(Fig. 4a-c)

Prosopocera (Alphitopola) infragrisea Breuning, 1950: 5 (Hunt & Breuning, 1956: 337).

Prosopocera (Dalterus) holoflava Breuning, 1981a: 37 (Adlbauer, 1997: 304) **syn. nov.**

Prosopocera (Dalterus) flavoides Téocchi, 1990b: 12. nom. nov.

Prosopocera (Dalterus) flava Breuning, 1981b: 57 (Sudre & Téocchi, 2009: 106).

Comments. – We make this synonymy subsequent to the comparison of the **holotypes** of: *P. (A.) infragrisea*, type locality: RSA, Northern Province [LIM], Shiluvane (MHNG)(Fig. 4a); and *P. (D.) holoflava*, type locality: RSA, Northern Province [LIM], KNP, Olifants Kamp. (TMSA) (Fig. 4 b&c); together with the study of a series of *P. (A.) infragrisea* specimens which included the **type** of *P. (D.) flavoides*, type locality: RSA: MPU, Renosterkop. (TMSA). These specimens originated from the collections of the TMSA, SANC and CJS.

Distribution. – RSA: LIM, MPU (Breuning, 1981b; Adlbauer, 1997).

***Prosopocera (Dalterus) ndumoensis* sp. nov.**

(Fig. 5a-e)

ZooBank: <https://zoobank.org/5E96A0ED-8F6C-4991-97A8-A821BA4BCC91>

Holotype, ♂, RSA, KZN, Ndumo Nat. Res. [= Ndumo Game Reserve], 26°54'S, 32°18'E, 09.xii.2010, *leg.* Ruth Müller (TMSA).

Paratype, ♂, RSA, Zululand [KZN], Hluhluwe Game Res[erve], 28°05'S, 32°04'E, 27.xi.1992, E-Y 2857, *leg.* Endrödy-Younga (TMSA).

Description

Habitus Moderately robust; elongate, dorsally flattened.

Measurements. – Length ♂: 23,0 mm - 25,6 mm, width 7,5 mm; antennae are 11 segmented with a total length of 32,7 mm.

Colouration. – Eyes and mandibles black. Head, thorax and legs dark reddish-brown with reddish-brown elytra. First five antennomeres dark reddish-brown, following antennomeres reddish-brown and only darkened apically.

Integument. – The entire body covered with short appressed pubescence. A few longish yellowish setae on the labrum and at the base of mandibles. Also a few scattered erect yellowish setae laterally on the pronotum close to the base. Antennae covered with dense pale appressed pubescence. Antennomeres 5-8 with a brownish pubescent band before the apex, this band almost covers the entire apical half of antennomeres 9-11. Head is covered with sparse yellowish-brown pubescence, denser around the eyes, clypeal margin, margins of the genae, outer margins of the median groove, as well as the base of the head. This denser pubescence outlines the eyes and the median groove. Pronotum covered with sparse yellowish-brown pubescence (sparseness may be due to rubbing and removal over time). Pubescence on the elytra a mixture of short fine yellowish-brown and greyish setation, which forms relatively dense but random greyish setaceous spots. A small greyish macula, surrounded by pale pubescence, occurs in the apical third of the elytra, behind the humeri on the lateral border. Femora covered dorsally with yellowish-brown pubescence, whilst the lateral and ventral sides are covered with a greyish pubescence. Tibiae with greyish pubescence in the basal half, and yellowish-brown pubescence in the apical half. Tarsi covered by a greyish pubescence dorsally, and a sparse yellowish-brown pubescence ventrally.

Head. – Entire head impunctate, with the exception of the antennal tubercles, which are finely and rugosely punctate. Frons slightly convex and sub-quadrate, slightly longer than wide, with a long bifurcate fronto-clypeal horn (male). Lateral margins of the frons with a vertical row of small granules. A median groove extends from the base of the bifurcate horn, between the antennal tubercles and onto the vertex, terminating at the base of the head. Antennal tubercles moderately raised. Ventral lobes of eyes strongly excavated, as long as wide, and nearly twice as long as the genae. Dorsal ocular lobes narrow, not extending beyond the inner side of the antennal tubercles. Vertex convex.

Antennae. – Long, approximately 1,5 times the body length, projecting beyond apex of the elytra after the middle of antennomere 7. Scape elongate and robust, finely punctured, with a distinct apical scar. Antennomeres 3 and 4 laterally expanded. Antennomere 3 longest, approximately 1,7 times longer than scape and 1,5 times the length of antennomere 4. Following antennomeres sub-equal in length, gradually decreasing in length towards the apex, with apical segment longer than the penultimate antennomere, and equal in length to antennomere 5.

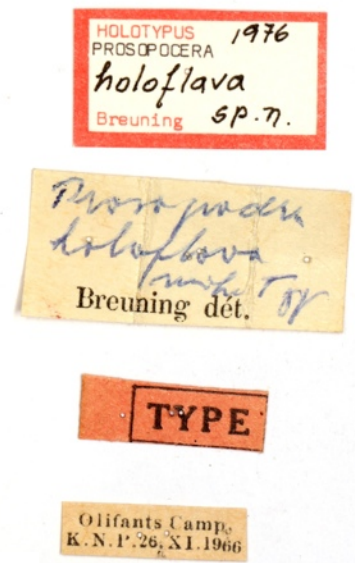
Pronotum. – Transverse (width to length ratio 1,3:1) with long blunt dorsally directed lateral spines, one on either side. Disc slightly convex, with



4a



4b



4c

Fig. 4. *Prosopocera (Alphitopola) infragrisea* Breuning, 1950.

4a. *P. (A.) infragrisea* holotype, ♂ (MHNG), length 15 mm. **4b.** *P. (D.) holoflava* holotype, ♂ (TMSA), length 15 mm. **4c.** *P. (D.) holoflava* holotype labels.

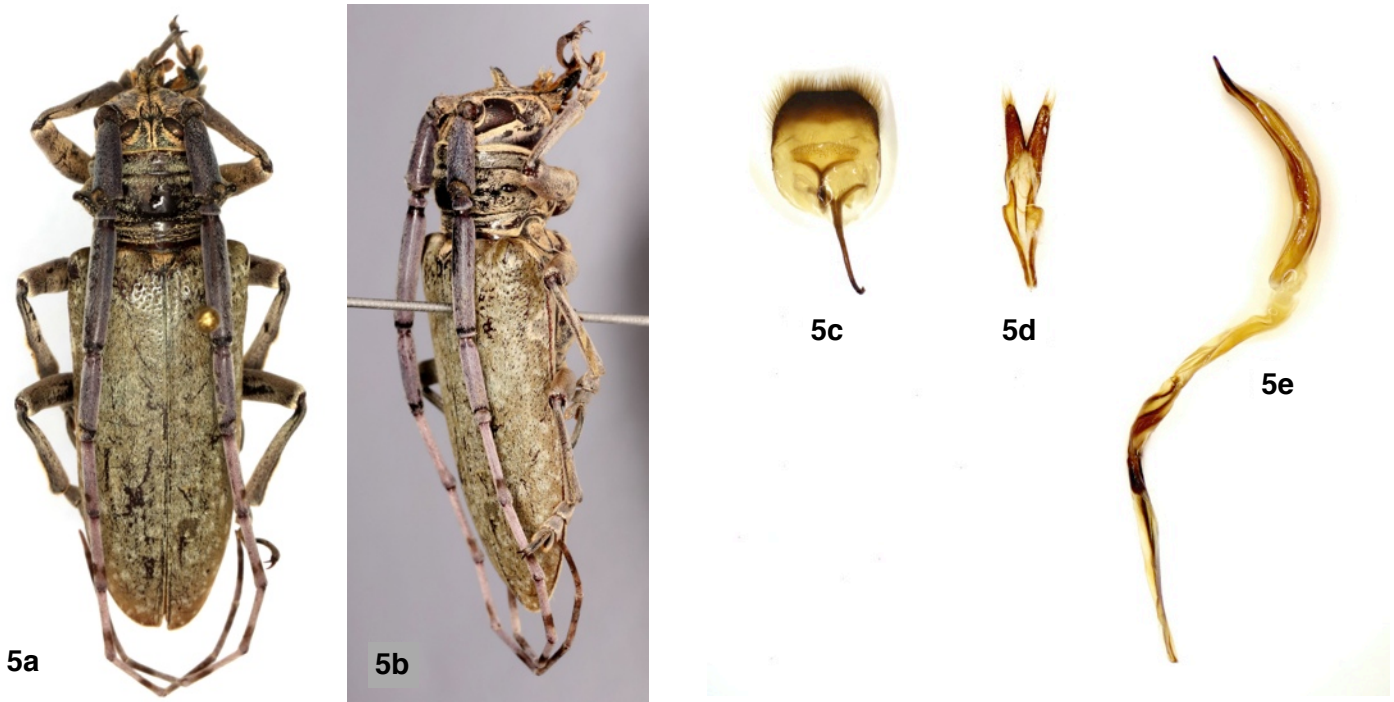


Fig. 5. *Prosopocera (Dalterus) ndumoensis* sp. nov.

5a. Holotype, dorsal view, ♂, length 25,6 mm. **5b.** Holotype, Lateral view. **5c-e.** Aedeagus. **5c.** Tergite 8 with sternites 8 & 9. **5d.** Tegmen (ventral view). **5e.** Median lobe (lateral view) and endophallus.

four distinct straight transverse grooves, two near the basal margin, and two before the apical margin.

Elytra. – Four times longer than the pronotum, basal width about one and half times wider than basal width of pronotum. Parallel-sided in basal two thirds, thereafter narrowing distinctly towards the apex, apices conjointly rounded. Basal fifth of elytra strongly and densely punctured, without granules in the humeral region, punctures becoming progressively smaller and sparser towards apices.

Legs. – Femora short robust and finely punctate. Tibiae moderately expanded apically. Mesotibiae with a medially situated external protrusion.

Ventral aspect. – Pro-sternal projection narrow, concave and regularly curved, its maximum height below that of the pro-coxae. Meso-sternal projection slightly higher than height of meso-coxae, moderately wide (twice the width of the pro-sternal projection), flat and sloping slightly downwards towards the broadly bifurcate apex. Thorax and abdomen without punctures or granules.

Male genitalia. – Aedeagus yellowish-brown (Fig. 5c-e). Tegmen (Fig. 5d) moderately curved in lateral view and about 3,8 mm long, greatest width medially situated in ventral view, parameres about one third of its length. Parameres divergent and not fused medially, tapering towards the apex, with a few basal setae, and long setae in the apical quarter. Median lobe (penis) longer than the tegmen, about 4,9 mm long, moderately curved in lateral view (Fig. 5e), straightening in the apical fifth, with a bluntly pointed median orifice; median struts about one third of its total length. Endophallus in non-everted position, moderately long - about 2,6 times the length of the median lobe, some of its apical sclerites elongate and staff-like, others forming bundles of short curved hair-like structures. Tergite 8 (Fig. 5c) slightly longer than wide, parallel sided, constricted in the apical quarter, truncate apically and densely fringed with long pale setae in the apical half.

Female. – Unknown.

Distribution. – RSA: KZN.

Differential diagnosis. – *P. (D.) ndumoensis* sp. n. has a similar pubescent coloration to *Prosopocera (Alphitopola) capeneri* Hunt and Breuning, 1957, with which it may be confused, but can easily be distinguished by the elongate dorsally directed blunt lateral spines on the pronotum (in *P. (A.) capeneri* the lateral spines are very small, and look like a micro granule (Téocchi *et al.*, 2015a)).

The new species is closely related to *Prosopocera (Dalterus) kulzeri* Breuning, 1936, a species that occurs in Malawi, Zambia, and Zimbabwe (Sudre & Téocchi, 2002), but can be distinguished by the presence of a distinct, elongate laterally situated blunt spine on the pronotum.

The new species differs from the aforementioned by: shorter antennae in the male (twice as long as the body in *kulzeri* Breuning), expanded antennomeres (only antennomeres 3-5 and the base of 6 expanded in *kulzeri* Breuning), and the lack of granules on the base of the elytra. It also has a slightly smaller habitus, different colouration and distribution.

Etymology. – Named for the Ndumo Game Reserve, a conservation area situated in northern KZN, bordering Mozambique.

Tribe **Eunidiini**

Genus *Eunidia* Erichson, 1843: 261

Eunidia duplicata (Pascoe, 1864)

(Fig. 6a&b)

Syessita duplicata Pascoe, 1864: 285.

Eunidia duplicata (Pascoe, 1864) (Thomson, 1868: 138).

This taxon was described from a specimen from South Africa, Natal (now RSA: KZN). To date, no illustration or photograph has been published for this taxon. We rectify this situation by presenting a photograph of the type housed in the Natural History Museum, London (NHMUK).

Eunidia timida Pascoe, 1864

(Fig. 7a-d)

Eunidia timida Pascoe, 1864: 283 (Thomson, 1868: 140; Aurivillius, 1908a: 128; Hunt & Breuning, 1956: 356; Breuning, 1957a: 79).

Eunidia diversipes Breuning, 1961b: 334 **syn. nov.**

Comments. – *E. timida* closely resembles *Eunidia caffra* Fähræus, 1872, but is smaller, 4 mm to 4,5 mm long, compared to the 6 to 8 mm for *E. caffra*. The Breuning (1957) revision of the genus



Fig. 6. *Eunidia duplicata* (Pascoe, 1864).

6a. *Syessita duplicata* Pascoe, 1864 syntype, ♂ (NHMUK), length 7 mm. **6b.** *S. duplicata* syntype labels.

Fig. 7. *Eunidia timida* Pascoe, 1864.

7a. *E. timida* syntype (NHMUK), length 4,5 mm. **7b.** *E. timida* syntype labels. **7c.** *Eunidia diversipes* Breuning, 1961, syntype (NHMB), length 3,8 mm. **7d.** *E. diversipes* syntype labels.

Eunidia, stipulates that the pronotum of *E. timida* is "very transverse," which is incorrect. Pascoe (1864) specifies that the pronotum is as long as wide, narrowing slightly at the base, in the original description. In *E. caffra*, the pronotum is of equal length and width, or only slightly transverse, but does not narrow basally.

Further, *E. timida* has longer antennae, the last 4 antennomeres project beyond the elytral apex, equal to more than a third of their length; antennomeres are long and narrow; fourth antennomere longer than the scape (in *E. caffra* shorter or as long as the scape (Breuning & Téocchi, 1978)); antennomeres 4 & 5 subequal in length (4 slightly shorter than 5 in *E. caffra* (Breuning & Téocchi, 1978)); following antennomeres decreasing gradually in length. Ventral eye lobes unusually short (Aurivillius, 1908a), only slightly longer than wide (about double the length in *E. caffra*); 1.75 times longer than the genae (about 3–4 times longer in *E. caffra* (Breuning & Téocchi, 1978)). Frons moderately transverse, area between one of the eye lobes and midline of frons slightly less than the width of one eye lobe. Interocular space on vertex about 3 times the width of dorsal eye lobe.

Eunidia timida is reddish-brown and covered with a sparse pale-yellow pubescence. Middle and hind femora, and first two or three basal antennomeres sometimes darkened and brownish in colour. Tibiae and tarsi yellowish, antennomeres 4–11 yellowish, sometimes darkened apically.

We had the opportunity to study the types of *E. timida*, type locality RSA, Natal [KZN] (NHMUK) (Fig. 7a&b) and *E. diversipes*, type locality East Africa [Mozambique], Delagoa Bay [now Maputo] (NHMB) (Fig. 7c&d). We see no morphological differences. The dark brown colouration of the medial and posterior femora, in contrast with the lighter tibiae, tarsi and anterior femora as described by Breuning (1961b) for *E. diversipes*, is also indicated by Breuning (1957b) in his redescription of *E. timida*.

Distribution. – RSA: KZN (Breuning 1957a), to which we add Mozambique (type).

Eunidia pygmaea Fåhraeus, 1872

(Fig. 8 a–f)

Eunidia pygmaea [recte *Eunidia pygmaea*] Fåhraeus, 1872: 54 (Breuning 1957a: 55; 1960: 119).

Eunidia jeanneli Breuning, 1939: 219 (Breuning 1957a: 55; 1960: 119; Téocchi, 1989: 27; 1991: 10; Adlbauer, 2000: 976; Téocchi *et al.*, 2014a: 27 & fig. 23) **syn. nov.**

Eunidia densepunctata Breuning, 1942b: 94 (Breuning 1957a: 52; 1960: 119; Téocchi, 1989: 27; 1991: 10).

Eunidia bimaculipennis Breuning, 1954: 15 (Breuning 1957a: 62; 1960: 120; Téocchi, 1989: 27; 1991: 10).

Eunidia bifuscofasciata Breuning, 1955b: 351 (Breuning 1957a: 104; 1960: 124; Téocchi 1991: 10).

Eunidia varidoxa Téocchi, 1985: nom. nov. *E. vagevittipennis* Breuning, 1981: 56 (nom. præoc.) (Téocchi, 1989: 27; 1991: 10).

Eunidia fuscofasciata Breuning, 1986 [in Forchhammer & Breuning, 1986]: 56 (Téocchi 1991: 10).

Material and types examined. – *Eunidia pygmaea* Fåhraeus, 1872: the type of *E. pygmaea* from "Caffraria" (coll. J.A. Wahlberg) could not found in Naturhistoriska Museet, Göteborg. However, a ♂ specimen, ex coll. J. A. Wahlberg (Fig. 8a&b), labelled: Caffraria, J. Wahlb[erg], hand written label 'pygmaea Fåhr', typed label 'pygmaea Fåhr', 9562 E92+ found in NHRS might be the original type specimen as type labels are often absent in old collections. This specimen is designated lectotype and a red label attached: Lectotype *Eunidia pygmaea* Fåhraeus, 1872 designated by R. Bate, 2022; *Eunidia bimaculipennis* Breuning, 1954: holotype, ♂, [Kenya], Mwingi,

Kitui, ii.[19]40, leg. T.H.E. Jackson, ex Coll. Com. Inst. Ent. Coll. No. 10963 (NHMUK), *Eunidia bimaculipennis* type det. Breuning, type locality Kenya, Mwingi, Kitui (NHMUK) (Fig. 8c&d); *Eunidia jeanneli* Breuning 1939, type locality, Tanzania, Kilimanjaro, Neu Moschi (MNHN) (= *Eunidia bimaculipennis* Breuning 1954) det. P. Téocchi, 1979; *Eunidia densepunctata* Breuning, 1942b, type locality Somalia, El Banno (MSNM); *Eunidia bifuscofasciata* Breuning, 1955, Breuning det., holotype, Rhodesia [Zimbabwe], Sebakwe, (SAMC) (Fig. 8e&f); *Eunidia varidoxa* Téocchi, 1985, type locality RSA, North Transvaal [LIM], Potgietersrus District, Limburg (TMSA); *Eunidia fuscofasciata* Breuning, 1986 [in Forchhammer & Breuning, 1986], type locality Tanzania, Ruaha National Park (MNHN).

Comments. – The comparison of the type specimens leaves no doubt as to their synonymy.

Eunidia subfasciata Gahan, 1898

(Fig. 9a–d)

Eunidia subfasciata Gahan, 1898: 58 (Breuning, 1957a: 42; Téocchi, 1992: 74; Téocchi *et al.*, 2010a: 4; Adlbauer & Beck, 2022: 22).

Eunidia tibialis Aurivillius, 1911: 214 (Breuning, 1957a: 42).

Eunidia moltonii Breuning, 1957b: 200 (Téocchi, 1992: 74).

Eunidia brunneomarmorata Breuning, 1970: 170, fig. 3; (Téocchi, 1992: 74).

Eunidia vagefasciata Breuning, 1955b: 352 (Breuning, 1957a: 66) **syn. nov.**

Comments. – We make this synonymy subsequent to the comparison of the **type** of *E. subfasciata* from British East Africa (Kenya), Samburu (NHMUK) (Fig. 9a&b) and the type of *E. vagefasciata*, from RSA (LIM) Transvaal, Leydsdorp (SAMC) (Fig. 9c&d); together with the study of a long series of *E. subfasciata* specimens (including the type of *E. brunneomarmorata* from RSA (MPU) Transvaal, Komatipoort (TMSA)) in collections of the TMSA, SANC and CJS. The type localities of *E. tibialis*, British East Africa (Kenya) (NHRS) and *E. moltonii*, RSA North Transvaal (LIM) (MSNM) are included in the distribution.

Distribution. – Ethiopia, Kenya, Mozambique, RSA (LIM, MPU), Somalia, Swaziland, Tanzania, Zimbabwe (Téocchi, 1992; Adlbauer & Beck, 2022).

Eunidia thomseni Distant, 1898

(Fig. 10a–c)

Eunidia thomseni Distant, 1898: 377 (Distant 1904–1906: 151; Téocchi, 1988: 15–16).

Eunidia thomseni var. *guttulata* Breuning, 1957a: 71 nom. nov. pro. *E. guttulata* Aurivillius, 1908b: 140 (Breuning & Téocchi 1978: 613).

Eunidia ferrandii Aurivillius, 1928: 482 (Breuning & Téocchi, 1978: 613).

Eunidia albicans Breuning, 1939: 211 (Téocchi, 1988: 19).

Eunidia zavattarii Breuning, 1942b: 94 (Breuning & Téocchi, 1978: 613).

Eunidia thomseni ssp. *rubroscapus* Breuning, 1962: 71 (Téocchi, 1988: 19).

Eunidia apiceclarior Breuning, 1967a: 297 (Téocchi, 1988: 18).

Eunidia pseudalbicans Breuning, 1968: 58 nomen nov. pro *E. subalbicans* Breuning, 1967b: 86 (Téocchi, 1988: 19).

Eunidia bicoloripennis Breuning, 1974: 413 (Téocchi, 1988: 20).

Eunidia clarkei Breuning, 1974: 414 (Téocchi, 1988: 19).

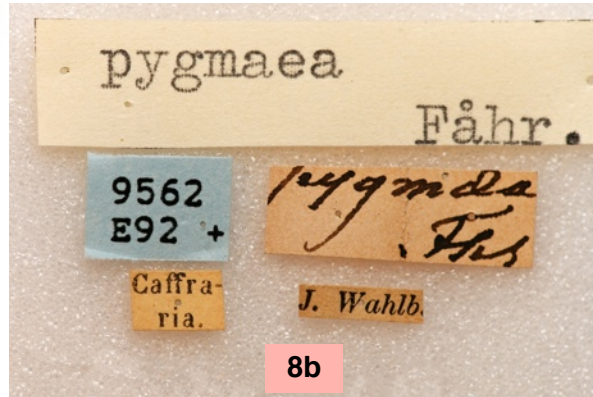
Eunidia suturebrunnea Breuning, 1977: 273 (Téocchi, 1988: 20).

Eunidia flavoornata Breuning, 1981a: 40 **syn. nov.**

Comments. – We compared the syntypes of *E. thomseni* from RSA, Transvaal (LIM), Pienaars River (NHMUK) (Fig. 10a&b); and the holotype of *E. flavoornata* from RSA, Transvaal (LIM), Mapungupwe [recte Mapungubwe], Messina [= Musina] distr[ict], Farm Greefswald (TMSA) (Fig. 10c); and see no morphological differences.



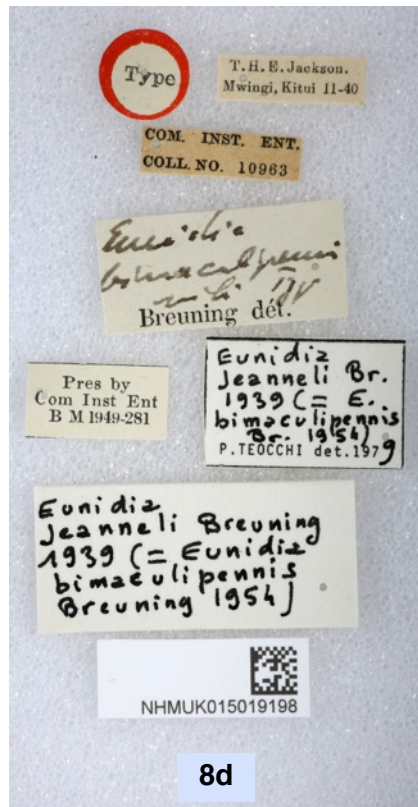
8a



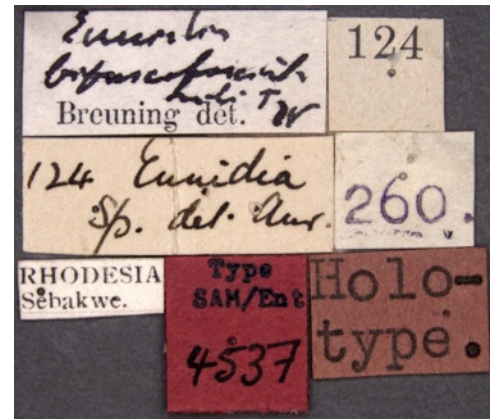
8b



8c



8d



8f



8e

Fig. 8. *Eunidia pygmaea* Fähræus, 1872.

8a. *E. pygmaea* lectotype, ♂ (NHRS), length 7 mm.

8b. *E. pygmaea* lectotype labels.

8c. *E. bimaculipennis* Breuning, 1954, holotype, ♂ (NHMUK), length 6 mm.

8d. *E. bimaculipennis* holotype labels.

8e. *E. bifuscofasciata* Breuning, 1955, holotype (SAMC), length 6 mm.

8f. *E. bifuscofasciata* holotype labels.

Distribution. – Benin, Botswana, Burkina Faso (CJS), Cameroon, Chad, Ethiopia, Kenya, Kongo-Kinshasa, Malawi, Mauritania (Coll J.F. Vayssière and CJS), Moçambique, Namibia, Niger, RSA, Republic of Central Africa, Saudi Arabia, Senegal, Somalia, Tanzania, Uganda, Yemen, Zimbabwe.

Eunidia fasciata Gahan, 1904

(Fig. 11a-d)

Eunidia fasciata Gahan, 1904, [in Distant 1904-1906: 151] (Breuning, 1957a: 110).
Eunidia obliqueflavovittata Breuning, 1981b: 55 (Téocchi, 1993b: 304).
Eunidia obliquealbovittata Hunt & Breuning, 1957: 56 (Breuning, 1957a: 111; 1960: 125) **syn. nov.**

Material examined

E. fasciata Gahan, 1904

- 1 ♀, RSA, Transvaal [MPU], Lydenburg, dist., 1896, leg. P.A. Krantz. Holotype: *Eunidia fasciata* Gahan (NHMUK) (Fig. 11a&b);
 - 1 specimen. South Africa, Naboombruit, Nylsvley, SE 24 28 Da, 7.ii.1975, leg. E. Holm, F. Kirsten & C. Scholtz, *E. fasciata* Gah. Det. Téocchi, 1974 (SANC);
 - 1 ♂, South Africa, KNP, Punda Milia, 18.xi.1969, leg. T. Drinkwater (SANC);
 - 1 ♂ 1 ♀, South Africa, (Mpumalanga), Luipershoek farm near Roossenekal, 25°07' S 29°50' E, 22.xi.1959, leg. L.G. le Roux (SANC);
 - 1 ♂, RSA (LIM), Hans Merensky Nat. Res., 23°45' S 27°49' E, 13-14.i.1991, leg. B. Grobbelaar (SANC).

E. obliquealbovittata Hunt & Breuning, 1957

- 1 ♂, Swaziland, Eranchi [now Tjaneni], 5-10.i.1955, leg. A.L. Capener. Holotype. *Eunidia obliquealbovittata* sp. n. Hunt & Breuning (TMSA) (Fig. 11c&d);
 - 1 ♂, South Africa, Eastern Transvaal [Mpumalanga], Nelspruit Dist., Farm de Hoop 203, 20-21.xi.1972, leg. A. Strydom (TMSA), *Eunidia obliquealbovittata* Hunt & Breuning, Det. Breuning 1975;
 - 1 ♂, RSA, Transvaal [LIM], [Potgietersrus Dist.], Limburg, 23°48' S, 28°55' E, xii.1964, leg. L. Vari (TMSA), *Eunidia obliquealbovittata* Hunt & Breuning, Det. Breuning 1975;
 - 1 ♂, South Africa, (Mpumalanga), Bronkhorstspuit, 22.xii.1959, leg. J.H. Grobler (SANC);
 - 1 ♂, 1 ♀, South Africa, KNP, Magaludzo, 23.xi.1969, leg. A. Braack (SANC);

E. obliqueflavovittata Breuning, 1981

- South Africa, KNP, Skukuza, 27.xii.1970, leg. T. Drinkwater, light trap. Paratype: *Eunidia obliqueflavovittata* sp. n., Det. Breuning (SANC);
 - South Africa, KNP, Skukuza, 29.xi.1990, leg. T. Drinkwater, light trap. Paratype: *Eunidia obliqueflavovittata* sp. n., Det. Breuning (SANC).

Comments. – Following a study of a series of specimens, including the type specimens, we propose the synonymy of *E. obliquealbovittata* with *E. fasciata*. Téocchi (1993b) proposed the synonymy of *E. obliqueflavovittata* from RSA, Transvaal (MPU), KNP, Skukuza (TMSA) with *E. fasciata* with which we concur. The postulation that *E. fasciata* may just be a “morph” of *E. strigata* Fähræus, 1872 (Breuning 1957a; Téocchi, 1993b) is beyond the scope of this paper, but may form part of a future publication.

Distribution. – Mozambique; RSA; Swaziland and Tanzania (Gahan, 1904 [in Distant 1904-1906]; Hunt & Breuning 1957; Téocchi, 1993b; Téocchi *et al.* 2007).

Eunidia bifasciata Aurivillius, 1911

(Fig. 12a-f)

Eunidia bifasciata Aurivillius, 1911: 214.
Eunidia subsenilis Breuning, 1954: 20 (Breuning 1957a: 32; Téocchi *et al.*, 2010c: 6-7; Téocchi *et al.*, 2014b: 58).
Eunidia mediomaculatoides Breuning, 1981a: 43 **syn. nov.**

Comments. – The study of the type specimens *E. bifasciata* from East Africa, Jkutha (Kenya, Ikutha) (NHRS) (Fig. 12a&b); *E. subsenilis* from Kenya, Mackinnon Road (NHMUK) (Fig. 12c&d); and the holotype of *E. mediomaculatoides* from RSA, Eastern Transvaal [MPU], Penge (TMSA) (Fig. 12e&f) leaves no doubt about their synonymy.

Distribution. – Angola, Ethiopia, Kenya, Namibia, RSA (MPU), Somalia, Tanzania (Adlbauer & Beck, 2015).

Eunidia flavomarmorata Breuning, 1939

(Fig. 13a-d)

Eunidia flavomarmorata Breuning, 1939: 215 (Breuning 1957a: 54; Téocchi *et al.*, 2008: 9; Téocchi *et al.*, 2010b: 8).
Eunidia postlatefasciata Breuning, 1981a: 42 (Téocchi, 1992: 75).
Eunidia varidoxa subsp. *strydomia* Téocchi, 1985: 25, nom. nov. pro. *Eunidia vagevittipennis* m. *latevittipennis* Breuning, 1981b: 56 (Téocchi, 1992: 75).
Eunidia subnebulosa Breuning, 1961c: 449 **syn. nov.**

Comments. – The study of the syntype of *E. subnebulosa* from RSA, Transvaal (LIM), KNP, Skukuza (NHMB) (Fig. 13c&d) and syntype *E. flavomarmorata* from Tanganyika territory (Tanzania), Kilosa (NHMUK) (Fig. 13a&b) leaves no doubt as to their synonymy.

Distribution. – Kenya, Malawi, RSA (LIM) (confirmed by type localities of *E. postlatefasciata*, KNP, Pretorius Kop (TMSA), and *E. varidoxa* subsp. *strydomia*, KNP, Punda Milia (TMSA)), Tanzania, Zambia, and Zimbabwe (Breuning 1957; Breuning 1981b; Téocchi *et al.* 2008).

Eunidia albopicta Breuning, 1939

(Fig. 14a&b)

Eunidia albopicta Breuning, 1939: 215 (Breuning 1957a: 111; 1960: 125).
Eunidia olivacea Breuning, 1954: 13 (Breuning 1957a: 112; 1960: 125; Téocchi, 1993b: 305, fig. 10; Adlbauer, 2000: 978; Téocchi *et al.*, 2010b: 10, fig. 26; Adlbauer & Beck, 2015: 179, fig. 572) **syn. nov.**
Eunidia trialbosignata Breuning, 1954: 13 (Breuning 1957a: 112; 1960: 125; Téocchi, 1993b: 305).

Comments. – Study of the syntypes of *E. albopicta* from D. O. Afrika [Tanzania] (NHRS) (Fig. 14 a&b); and *E. olivacea* from Dagahbur, Ethiopia, Ogaden Province, and Somali Region (NHMUK), leaves no doubt about their synonymy. Téocchi (1993b) proposed the synonymy of *E. olivacea* with *E. trialbosignata* from Ethiopia, Ogaden Province, Somali Region, and Warder (NHMUK), with which we agree. Two specimens from this taxon were collected in LIM, RSA, 1 ♂, Soutpansberg, Wylliespoort, 11.iii.1995, leg. N.J. Duke (TMSA); 1 ♂, Lajuma Nature Reserve, 23°02' S, 29°26' E, 12.xii.2017, leg. Ruth Müller (TMSA).

Distribution. – Ethiopia, Kenya, Somalia and Tanzania (Adlbauer & Beck, 2015), to which we add RSA (LIM).

Eunidia ziczac Breuning, 1939

(Fig. 15 a&b)

Eunidia ziczac Breuning, 1939: 218 (Breuning 1957a: 69).

Comments. – This small-sized taxon was described from a specimen from South Africa, Natal [RSA: KZN] (type in NHMUK) and later reported from southern Malawi and Zimbabwe (Sudre & Téocchi, 2002). No drawing or photograph has been published of this taxon. We here present a photograph of the type.

Eunidia similis Breuning, 1942a

(Fig. 16)

Eunidia similis Breuning, 1942a: 135 (Adlbauer & Mourglia, 1999: 338; Téocchi, 2000b: 7).
Eunidia saucissae Breuning & Téocchi, 1978: 606-607, fig. 3 (Téocchi, 1992: 82).
Eunidia politzari Siess, 1981: 175, Abb.1. **syn. nov.**

Comments. – We make this synonymy without having seen the Siess (1981) type from Ivory Coast, Bouaké (MNHN), however, the translated description by Siess (1981), as well as the accompanying



Fig. 9. *Eunidia subfasciata* Gahan, 1898. 9a. *E. subfasciata* syntype, ♂ (NHMUK), length 13 mm. 9b. *E. subfasciata* syntype labels. 9c. *E. vagefasciata* Breuning, 1955b, holotype (SAMC). 9d. *E. vagefasciata* holotype labels.



Fig. 10. *Eunidia thomseni* Distant, 1898. 10a. *E. thomseni* syntype, ♂ (NHMUK), length 11 mm. 10b. *E. thomseni* syntype labels. 10c. *E. flavoornata* Breuning, 1981 paratype, ♂ (TMSA), length 10 mm.



Fig. 11. *Eunidia fasciata* Gahan, 1904. 11a. *E. fasciata* holotype, ♀ (NHMUK), length 8,5 mm. 11b. *E. fasciata* holotype labels. 11c. *Eunidia obliquealbovittata* Hunt & Breuning, 1957 holotype, ♂ (TMSA), length 7,5 mm. 11d. *E. obliquealbovittata* holotype labels.

drawing (Siess, 1981: Abb.1), leaves no doubt that this taxon belongs to the species *E. similis* described by Breuning (1942a).

Observation. – Although Morati (2003) indicates that the Siess collection is housed in the Muséum d'Histoire Naturelle de Genève in the introduction, he does not mention *E. politzari* in the list of types housed in this museum. Further, following the information that we requested concerning the type of *E. politzari*, Dr. G. Cuccodoro (MHNG) informed us that the W. Siess collection was not at the MHNG, so we were unable to locate this type specimen.

Distribution. – Bénin, Boudjagou, Pendjari VI-2005, leg. P. Juhel (CEJ); Burkina Faso (type *E. politzari* from Haute Volta (Burkina Faso): Bobo Dioulasso: Collection W. Siess.), Chaine de l'Atakora, P.N.W, VI-2004, leg. J Bouyer (CJS); Ivory Coast (type *E. similis*); Zou Department, near Kokora, 21-VI-2001, leg. Kantner (coll. P. Kabátek). Cameroon, Central African Republic, Nigeria, Togo (Adlbauer et Mourglia, 1999; Téocchi 2000b). We have added Bénin to this list.

Eunidia lujai Breuning 1951

(Fig. 17a-f)

Eunidia lujai Breuning 1951: 152 (Breuning, 1960: 123).

Eunidia camerunica Sudre & Vitali 2016 : 63 (stat. nov.): *Eunidia deceptrix* subsp. *camerunica* Téocchi 1994a : 209, fig. 4. **syn. nov.**

Eunidia camerunica subsp. *gaboncola* Sudre & Vitali 2016: 63 (stat. nov.): *Eunidia deceptrix* subsp. *gaboncola* Téocchi et al. 2004 : 11, fig. 14. **syn. nov.**

Comments. – Comparaison of the types of *E. lujai* (fig. 17a &b) from Sankuru, Kondué, Belgium Congo [R.D.C.] (RMCA); *E. deceptrix* subsp. *camerunica* (fig. 17c&d) from Efulen, Cameroun (NHMUK); and *E. deceptrix* subsp. *gaboncola* (Fig. 17e&f) from Camp No.1, Cap Esterias, Gabon (NHMUK) together with specimens from Malélé, Kouilou, Congo, I-1999 (CBR), leads to the conclusion that the small variations in size and colouring between the specimens are only elements of individual variability.

Distribution. – R.D.C.: Sankuru, Kondué (Type) ; Cameroun: Efulen (Type : *E. deceptrix* subsp. *camerunica*); Congo: Malélé, Kouilou; Gabon: Cap Esterias (Type : *E. deceptrix* subsp. *gaboncola*).

Eunidia allardi Breuning, 1964

(Fig. 18)

Eunidia allardi Breuning, 1964: 373.

Material examined. – Four specimens, 3 ♂ (10-11 mm) and 1 ♀ (13 mm) from this taxon were captured in Mozambique, Sofala Province, 30 km South of Caia, 18°02'S, 35°12'E, 76 m, 21.xii.2005, leg. Gussmann & Müller (TMSA).

Distribution. – Previously *E. allardi* was only recorded from Central and Eastern Africa: Democratic Republic of the Congo (Breuning, 1964), Kenya & Tanzania (Téocchi, 1990a; Téocchi, 1993a). We add Mozambique to this distribution.

Eunidia quadrialbosignata Breuning, 1965

Eunidia quadrialbosignata Breuning, 1965: 308.

Material examined. – Zambia, Kasanka Nature Park (N. of Serenje), Wasa Lodge, 12°34'04"S, 30°15'06"E, 20.xi.2001, leg. B.D. Gill & S.M.V. Gussmann (SANC).

Comments. – This taxon was previously only known from an 11 mm specimen, described from the Democratic Republic of the Congo, Kivu Region, Kahuzi, xi – xii.1950, leg. Hughes & Bomans (RMCA). During a visit to the SANC by one of us (Riana Bate), a 9 mm specimen of this taxon, from Zambia, was discovered among the unidentified material.

Distribution. – DRC and Zambia.

Eunidia lizleri Téocchi & Sudre, 2002

(Fig. 19)

Eunidia lizleri Téocchi & Sudre, 2002: 10.

Material examined

- 2 specimens: Malawi, Uzuzu Hills, Namizuma forest, xi.2006, J.F. Josso & P. Juhel leg. (CJS & CTG);

- 1 specimen: Zambia, Danger Hill, 20 km north of Mpika, Northern Province, xi.2011, leg. N. Delahaye, (CJS);

- 1 ♂, Zimbabwe, Harare, Criston Bank, 1.xii.1994, leg. N.J. Duke (TMSA).

Comments. – No previous photograph or drawing of this taxon has been published. We take this opportunity to rectify the situation (Fig. 19).

Distribution. – *E. lizleri* was previously only recorded from Tanzania (Téocchi & Sudre, 2002), we here add Malawi, Zambia & Zimbabwe.

Eunidia albomaculata sp. nov.

(Fig. 20a&b)

ZooBank: <https://zoobank.org/C34FFA0F-2E2D-41E8-BA71-5EF160C8833A>

Holotype. ♂, RSA, N. Prov. [LIM], [Tshipise], Nwandeni Resort, 32°38'S, 30°24'E, 05-09.ii.1994, leg. E. Grobbelaar (SANC).

Description.

Habitus small, slender, elongate, dorsally flattened.

Measurements. – Length ♂: 4,9 mm, width 1,1 mm.

Colouration. – Eyes and outer margin of mandibles black. Head, thorax and elytra light reddish-brown. Antennae yellowish-tan, apex of antennomeres 3-10 and almost the entire antennomere 11 pale reddish-brown, legs and abdominal segments yellowish-tan.

Integument. – Body covered with short appressed silky tan setae dorsally. A few longer pale setae on labrum and base of mandibles. Antennae and legs sparsely covered with short pale appressed micro-setae. Frons covered with pale setae which extend around the lower lobe of the eyes. Vertex sparsely covered with shiny tan-coloured setae. Four broad pale silky lateral longitudinal bands on pronotum, two on each side, separated laterally by a narrow tan band. Pale basal band extends onto, and covers, the metepimeron. Five pale silky matte maculae on each elytron: a large sub-circular macula on each humerus; a medially situated large roundish macula, with another at the apex; and two smaller maculae along lateral margin, one pre-median, the other post-median. Ventral surface sparsely covered with pale setae.

Head. – Mandibles short, shiny, arcuate; base broad and hooked apically, incisor edge smooth. Frons transverse, slightly convex, finely rugosely punctate. Antennal tubercles poorly developed, separated by a broad shallow V-shaped groove. Eyes strongly excavated, coarsely granulate. Ventral eye lobes large, 1,3 times longer than wide, and 4 times longer than genae. Dorsal lobes narrow, widely separated, (not extending past the antennal insertion points). Vertex finely rugosely punctate, slightly convex with a short sulcus between the antennal tubercles.

Antennae. – Elongate slender, about 1,4 times longer than body. Scape elongate, without apical scar, finely and rugosely punctate. Antennomere 3 not extended into an apical tooth, approximately double the length of antennomere 2, approximately quarter of the length of antennomere 4; antennomere 4 slightly shorter than the scape and antennomere 5; antennomere 5 as long as the scape and longer than antennomere 6; antennomeres 6-11 decreasing in length, and antennomeres 4-11 with micro-sculpture.

Pronotum. – Transverse, almost as long as wide; lateral edges very slightly rounded medially, faintly constricted both near apex and base; finely and rugosely punctate.

Scutellum. – Small, parallel-sided and broadly rounded apically, with micro-sculpture.

Elytra. – Elongate, about 3 times longer than their maximum width. Distance between the humeri about 1,5 times basal width of pronotum. Dorsally flattened without longitudinal carinae. Densely and finely

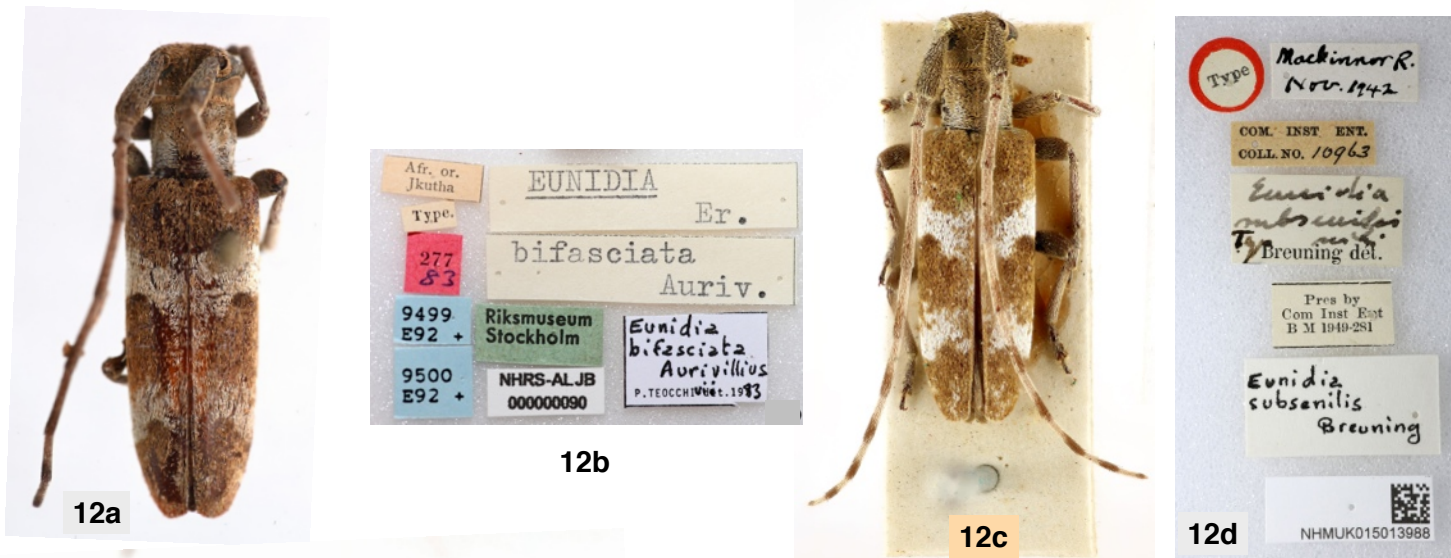


Fig. 12. *Eunidia bifasciata* Aurivillius, 1911.

12a. *E. bifasciata* syntype, ♀ (NHRS), length 11 mm.

12b. *E. bifasciata* syntype labels.

12c. *E. subsenilis* Breuning, 1954, syntype, ♂ (NHMUK), length 10 mm.

12d. *E. subsenilis* syntype labels.

12e. *E. mediomaculatoides* Breuning, 1981a, holotype, ♂ (TMSA), length 9 mm.

12f. *E. mediomaculatoides* holotype labels.



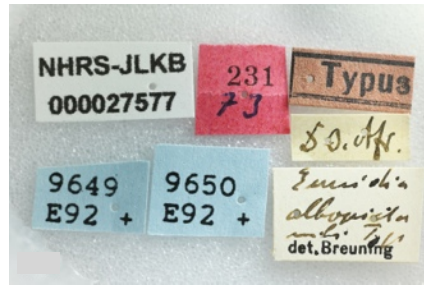
Fig. 13. *Eunidia flavomarmorata* Breuning, 1939.

13a. *E. flavomarmorata* syntype, ♂ (NHMUK), length 6 mm. 13b. *E. flavomarmorata* syntype labels.

13c. *E. subnebulosa* Breuning, 1961 syntype ♂ (NHMB), length 7 mm. 13d. *E. subnebulosa* syntype labels.



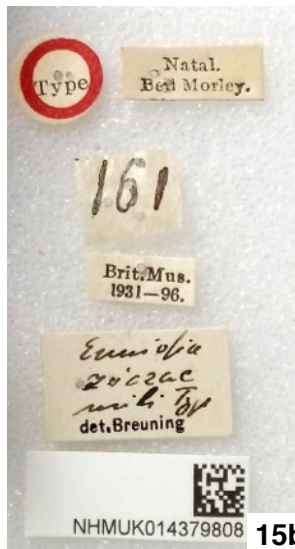
14a



14b



15a



15b



16

Fig. 14. *Eunidia albopicta* Breuning, 1939.

14a. *E. albopicta* syntype, ♂ (NHRS), length 5 mm.

14b. *E. albopicta* syntype labels.

Fig. 15. *Eunidia ziczac* Breuning, 1939.

15a. *E. ziczac* holotype, ♂ (NHMUK), length 4,5 mm.

15b. *E. ziczac* holotype labels.

Fig. 16. *Eunidia similis* Breuning, 1942a, ♂, length 8 mm.

punctured, distance between punctures less than width of punctures, punctuation becoming finer in apical third. Parallel-sided laterally and rounded to sub-truncate apically.

Legs. – Rugosely micro-punctate, femora weakly clavate. First segment of hind tarsi as long as following two combined.

Ventral aspect. – Fine scattered punctures, with the fifth visible sternite the longest.

Female. – Unknown.

Distribution. – RSA: LIM.

Differential diagnosis. – The pale pubescent ornamentation of *E. albomaculata* sp. nov. is unique, although it has some similarities with two central African species; *E. elisae* Sudre & Vitali, 2016 (nom. nov. pro *Eunidia teocchii* Vitali & Sudre, 2015) and *E. octoplagiata* Breuning, 1955a. Both aforementioned species have eight pale maculae on the elytra (Vitali & Sudre, 2015); in *E. elisae* six on the disc and one laterally on either side, and in *E. octoplagiata* eight on the disc. In *E. albomaculata* sp. nov. there are ten elytral maculae (six on the disc and two laterally on either side). It also differs from *E. elisae* by lacking a pale elongate median band on the pronotum, has two lateral pronotal bands (only one in *E. elisae*), coarser punctuation on the elytra, and is smaller in size. The presence of the lateral pronotal bands, coarser elytral punctuation and its smaller size (4,5 mm versus 10 mm for *E. octoplagiata*) also

distinguish the new species from *E. octoplagiata*.

The new species *E. albomaculata* shares important characters with *E. nebulosa* Erichson, 1843 and *E. ochreomarmorata* Breuning, 1939. The pronotal shape, shape of third antennomere (not extended into an apical tooth), and relative length of antennomere 5, are similar in all three species. However, the new species differs from *E. nebulosa* by not having truncate elytra, being smaller in size, and has different ornamentation on the pronotum and the elytra. It differs from *E. ochreomarmorata* in having coarser elytral punctuation as well as different ornamentation on the pronotum and the elytra.

Etymology. – The new species name, *albomaculata*, is formed by the prefix albo- and suffix macula (of Latin origin) meaning ‘with white spots.’ The gender of the name is masculine.

Acknowledgments

Our sincerest thanks to Keita Matsumoto and Max Barclay of the Natural History Museum, London, for their kind assistance, and photography of type specimens housed in their collection.

Dr. Christoph Germann and Isabelle Zürcher of the Museum of Natural History, Basel, thank you for the type photographs of *E. diversipes* Breuning, 1961 and *E. subnebulosa* Breuning, 1961. Stéphane Hanot (photographer) of the Musée royal de l’Afrique central, Tervuren, Belgium, thank you for the type photographs of *E. lujai* Breuning, 1951.



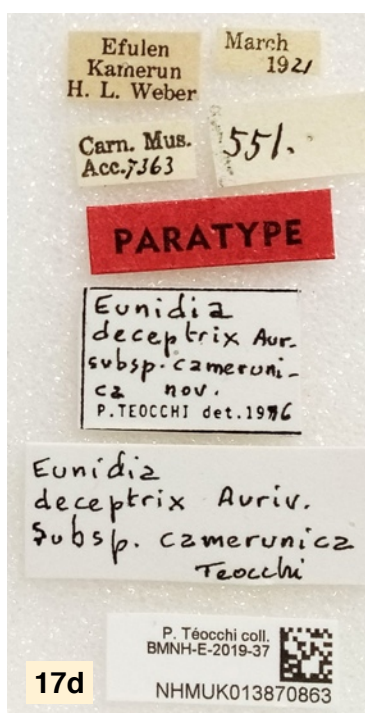
17a



17b



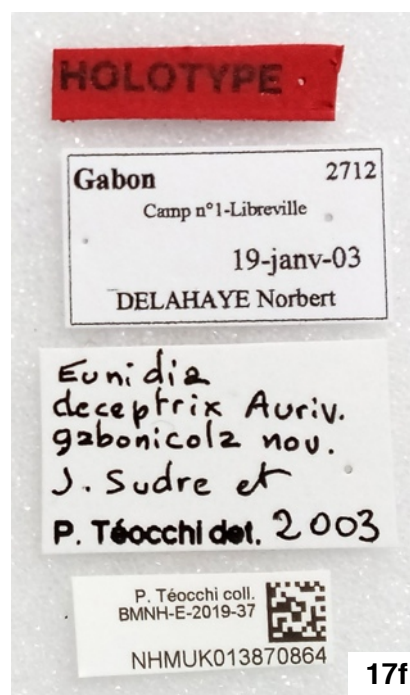
17c



17d



17e



17f

Fig. 17. *Eunidia lujai* Breuning 1951.

17a. *E. lujai* holotype, ♂ (RMCA), length 8 mm.

17b. *E. lujai* holotype labels.

17c. *E. deceptrix camerunica* Teocchi, 1994, paratype, ♂, length 11,5 mm (NHMUK).

17d. *E. deceptrix camerunica* paratype labels.

17e. *E. deceptrix gaboncola* Teocchi, Jiroux & Sudre, 2004, holotype, ♀, length 11,5 mm (NHMUK).

17f. *E. deceptrix gaboncola* holotype labels.

To Aisha Mayekiso, Z. Njeza and M. Hector of the Entomological Collection, Iziko South African Museum, for their kind assistance and photography of the type specimens of *E. vagefasciata* Breuning, 1955 and *E. bifuscifasciata* Breuning, 1955.

Mercedes Paris, curator of the Museo Nacional de Ciencias Naturales, Madrid, thank you for allowing us to study and photograph the types described by Báguena.

Our friend, Stanislav Snäll, many thanks for the photography of type specimens in the Naturhistoriska Riksmuseet, Stockholm.

Thanks also go to Werner Strümpher, curator of the Coleoptera at the Ditsong National Museum of Natural History, Pretoria, for his kind and friendly assistance to one of us during our many visits to the museum, and for the loan of *Eunidia* specimens.

Elizabeth Grobbelaar (Beth) of the South African National Collection of Insects, ARC-PPRI, Pretoria, our gratitude for the loan of specimens, kind assistance and fruitful discussions during our many visits.

References

- Adlbauer K., 1997. – Bockkäfer aus Zimbabwe und Transvaal, Teil III - Lamiinae (Coleoptera Cerambycidae). *Lambillionea*, 97 (2): 298-320, 42 figures.
- Adlbauer K., 2000. – Zur Cerambycidenfauna Äthiopiens II - Lamiinae (Coleoptera, Cerambycidae). *Linzer biologische Beiträge*, 32 (2): 963-998, 21 figures.
- Adlbauer K. & Mourglia R., 1999. – Zur Bockkäferfauna von Togo II. Lamiinae (Col. Cerambycidae). *Bonner Zoologische Beiträge*, 48 (3-4): 329-352, 7 figures.
- Adlbauer K. & Beck R., 2015. – *Katalog und Fotoatlas der Bockkäfer Äthiopiens (Coleoptera, Cerambycidae)*. Taita Publishers, Czech Republic, 312 pp.
- Adlbauer K. & Beck R., 2022. – Zweiter Nachtrag zum Katalog und Fotoatlas der Bockkäfer Äthiopiens und Beschreibung einer noch unbekanntem Art (Coleoptera, Cerambycidae). *Les Cahiers Magellanes*, (NS) 42: 14-30, 30 figures.
- Aurivillius C., 1908a. – Von Dr. I. Trägårdh in Natal und dem Zululande gesammelte Cerambyciden. *Entomologisk Tidskrift*, 29 (2-3): 127-130, 1 figure.
- Aurivillius C., 1908b. – Neue oder wenig bekannte Coleoptera Longicornia. 10. *Arkiv för Zoologi*, 4 (17): 133-141, 6 figures. <https://www.biodiversitylibrary.org/item/30144#page/575/mode/1up>
- Aurivillius C., 1911. – Neue oder wenig bekannte Coleoptera Longicornia. 12. *Arkiv för Zoologi*, 7 (19): 187-228, figures 49-57. <http://www.biodiversitylibrary.org/item/30233#page/453/mode/1up>
- Aurivillius C., 1922. – Cerambycidae : Lamiinae. I. Coleopterorum Catalogus pars 73 [vol. 23] I: 1-322, *W. Junk & S. Schenkling*, Berlin. <http://www.biodiversitylibrary.org/item/38769 § 15 janvier 1922 §>
- Aurivillius C., 1925. – Zoological results of the Swedish Expedition to Centrale Africa 1921. Insecta. 13. Cerambycidae; *Arkiv för Zoologi*, 17 B (2): 1-3.
- Aurivillius C., 1928. – Neue Cerambyciden aus dem Somaliland und Abessinien in Museo Civico di Storia Naturale in Genova. *Annali del Museo Civico di Storia Naturale Giacomo Doria*, 52: 473-486, plate. IV.
- Báguena Corella L., 1952. – Primera note sobre Lamiinae de los territorios españoles del Golfo de Guinea (Col. Phytophagoidae); *EOS. Revista Española de Entomología*, 28 (1): 7-56, 1 figure.
- Báguena Corella L. & Breuning S., 1962. – Catálogo de los Cerambycidae de las Provincias españolas del Golfo de Guinea (Coleoptera). *Graellsia*, 19 (4-6): 137-228.
- Blanchard C.É., 1845. – Histoire des Insectes, traitant de leurs mœurs et de leurs métamorphoses en général, et comprenant une nouvelle classification fondée sur leurs rapports naturels. Paris, *Didot Frères* 2: 1-524.
- Breuning S., 1936. – Études sur les Lamiaires (Coléop. Cerambycidae). Troisième Tribu: Prosopocerini Thomson. *Novitates Entomologicae*, 3ème supplément (21-29): 157-230, fig. 269-371.
- Breuning S., 1938. – Nouveaux Cerambycidae (Col.). *Novitates Entomologicae*, 9: 30-63, 24 figures.
- Breuning S., 1939. – Novae species Cerambycidarum VII. *Festschrift zum 60. Geburtstag von Professor Dr. Embrik Strand*, 5: 144-290.
- Breuning S., 1942a. – Novae Species Cerambycidarum XI. *Folia Zoologica et Hydrobiologica*, 1: 113-175.
- Breuning S., 1942b. – Über einige neue ostafrikanische Cerambyciden (Lamiinae) des Museo civico di Storia naturale, Trieste. *Atti del Museo Civico di Storia Naturale di Trieste*, 15 (4): 87-94.
- Breuning S., 1950. – Nouvelles formes de Lamiaires, (troisième partie). *Bulletin de l'Institut Royal des Sciences Naturelles de Belgique*, 26 (12): 1-32.
- Breuning S., 1951. – Lamiaires nouveaux du Congo belge (Col. Cerambycidae). *Revue de Zoologie et de Botanique Africaines*, 44 (2): 148-155.
- Breuning S., 1954. – Nouvelles formes de Lamiaires (Sixième partie). *Bulletin de l'Institut Royal des Sciences Naturelles de Belgique*, 30 (28): 1-23, 4 figures.
- Breuning S., 1955a. – Nouveaux Lamiaires du Muséum national d'Histoire Naturelle (2e Note) [Col. Cerambycidae] (suite). *Bulletin de la Société Entomologique de France*, 60 (5): 70-77, 6 figures.
- Breuning S., 1955b. – Neue Lamiinae aus dem South African Museum (Coleoptera Cerambycidae). *Annals of the South African Museum*, 41 (6): 345-357.
- Breuning S., 1957a. – Revision du genre *Eunidia* Erichson (Coleoptera Cerambycidae). *Annales du Musée Royal du Congo Belge*, Tervuren, série in-8, Sciences Zoologiques 53: 5-127.
- Breuning S., 1957b. – Quatre nouveaux Longicornes du Musée de Milan (Col. Ceramb.). *Atti della Società Italiana di Scienze Naturali e del Museo Civico di Storia Naturale in Milano*, 96 (3-4): 200-202.
- Breuning S., 1959. – Catalogue des Lamiaires du Monde (Col. Céramb.) 2. Lieferung. *Tuntzing bei München, Museums G. Frey*: 49-107.
- Breuning S., 1960. – Catalogue des Lamiaires du Monde (Col. Céramb.). *Verlag des Museums G. Frey*, (3): 109-182.
- Breuning S., 1961a. – Nouveaux Lamiaires de l'Afrique centrale (Coleoptera Cerambycidae Lamiinae). *Revue de Zoologie et de Botanique Africaines*, 63 (3/4): 249-257.
- Breuning S., 1961b. – Neue Lamiinae aus dem Museum G. Frey (Col. Cerambycidae). *Entomologische Arbeiten aus dem Museum G. Frey*, 12 (2): 326-342.
- Breuning S., 1961c. – Neue, von Dr. Haaf in Afrika gesammelte Lamiiden (Col. Ceramb.). *Entomologische Arbeiten aus dem Museum G. Frey*, 12 (2): 448-451.
- Breuning S., 1962. – Zwei neue Lamiiden aus den Beständen des Museums G. Frey (Col. Ceramb.). *Entomologische Arbeiten aus dem Museum G. Frey*, 13 (1): 71.
- Breuning S., 1964. – Coléoptères Cerambycidae nouveaux des collections du Musée Royal de l'Afrique Centrale, à Tervuren. *Revue de Zoologie et de Botanique Africaines*, 69 (3/4): 369-376.

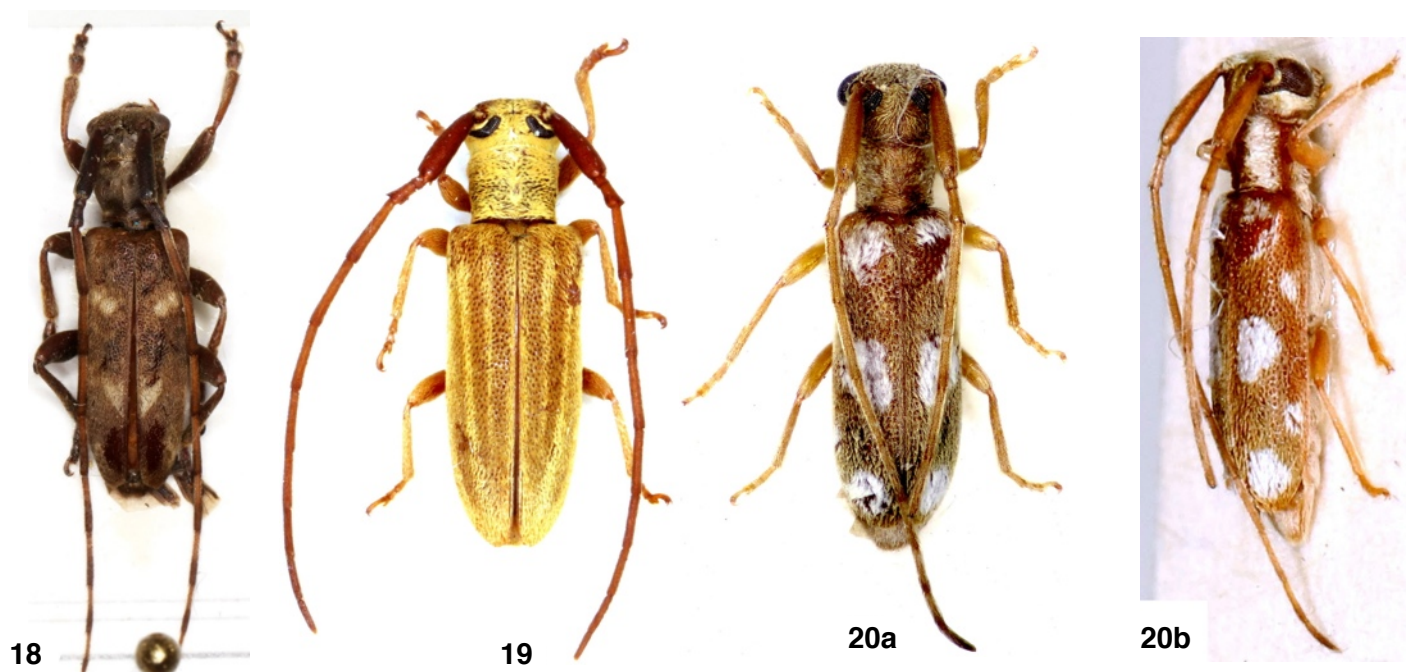


Fig. 18. *Eunidia allardi* Breuning, 1964, ♂, length 11 mm.

Fig. 19. *Eunidia lizleri* Téocchi & Sudre, 2002, ♂, length 7 mm.

Fig. 20. *Eunidia albomaculata* sp. nov. **20a.** holotype, ♂, length 4,9 mm, Dorsal view. **20b.** Lateral view.

Breuning S., 1965. – Nouveaux Lamiaires du Congo (Coleoptera Cerambycidae). *Revue de Zoologie et de Botanique Africaines*, 71 (3/4): 304-308.

Breuning S., 1967a. – Nouveaux Lamiaires du British Museum (Natural History), (Coleoptera, Cerambycidae). *Journal of Natural History*, 1: 295-297.

Breuning S., 1967b. – Descriptions de Lamiaires africains nouveaux (Coleoptera Cerambycidae). *Revue de Zoologie et de Botanique Africaines*, 75 (1-2): 82-94.

Breuning S., 1968. – Quelques rectifications systématiques sur les Lamiaires (Col. Cerambycidae). *Bulletin de la Société Entomologique de Mulhouse*: 57-58.

Breuning S., 1970. – Neue Lamiinen aus Südafrika (Coleoptera: Cerambycidae). *Annals of the Transvaal Museum*, 26 (7): 169-171, 4 figures.

Breuning S., 1971. – Nouveaux Cerambycides, Lamiinae, de Lourenço Marques des collections du Museu Dr. Álvaro de Castro. *Novos Taxa Entomológicos*, 85: 3-10, 12 figures.

Breuning S., 1974. – Descriptions de nouvelles formes de Lamiinae d'Ethiopie (Coleoptera Cerambycidae). *Revue de Zoologie et de Botanique Africaines*, 88 (2): 413-420.

Breuning S., 1977. – Nouveaux Lamiaires africains des collections du Muséum de Paris (Col. Cerambycidae). *Bulletin du Muséum National d'Histoire Naturelle de Paris* (3ème série) Zoologie, 304: 265-303.

Breuning S., 1981a. – Beschreibungen neuer Lamiinae des Transvaal Museums, Pretoria (Coleoptera: Cerambycidae). *Folia Entomologica Hungarica* (series nova), 42 (34) 2: 35-54, 3 pls, 18 fig.

Breuning S., 1981b. – Descriptions supplémentaires de Lamiinae, Sud Africains nouveaux (Coleoptera: Cerambycidae). *Folia Entomologica Hungarica*, (series nova), 42 (34) 2: 55-59.

Breuning S. & Téocchi P., 1978. – Notes et mises au point concernant quelques Apomecynini africains (Coleoptera, Cerambycidae, Lamiinae). *Bulletin de l'institut Fondamental d'Afrique Noire*, 40, série A (3): 605-620, 10 figures.

Delahaye N., Sudre J. & Téocchi P., 2000. – Description de *Prosopocera (Alphitopola) lambda* n. sp. du Gabon et captures intéressantes de quelques *Prosopocerini*, Thomson, 1868 (Coleoptera, Cerambycidae, Lamiinae, Prosopocerini). *Bulletin Mensuel de la Société Linnéenne de Lyon*, 75 (7): 289-295, 2 figures.

Distant W.L., 1898. – Coleoptera collected in the Transvaal. *The Annals and Magazine of Natural History*, (7) 1: 366-378. <https://www.biodiversitylibrary.org/item/53361#page/382/mode/1up>

Distant W.L., 1904-1906. – *Insecta Transvaaliensia*. A contribution to a knowledge of the entomology of South Africa. Order Coleoptera. Fam. Cerambycidae. (Longicornia) Publisher W.L. Distant, Hatton Garden, London 1 (5-6), 98-252, figures 15-27, plates 9-16.

Erichson W.F., 1843. – Beitrag zur Insecten-Fauna von Angola, in besonderer Beziehung zur geographischen Verbreitung der Insecten in Afrika. *Archiv für Naturgeschichte*, 9: 199-267.

Evenhuis N.L., 2020. – The insect and spider collections of the world website. Available at: <http://hbs.bishopmuseum.org/codens/> [Last accessed: 2023-04-25].

Fähræus O.I., 1872. – Coleoptera Caffrariae, annis 1838-1845 a J. A. Wahlberg collecta. Longicornia descriptis. *Öfversigt af Kongliga Svenska Vetenskaps-Akademiens Förhandlingar*, Stockholm 29 (2): 29-61. <https://www.biodiversitylibrary.org/item/279720#page/169/mode/1up>

Forchhammer P. & Breuning S., 1986. – Annotated list of Cerambycidae, subfamily Lamiinae collected in Tanzania, Zambia and Botswana 1969-80 with description of 86 new taxa. Contributions to the knowledge of Ethiopian Cerambycidae (Coleoptera) II. *Natura Jutlandica*, 22 (1): 1-72, 84 figures.

- Gahan C.J., 1898. – Descriptions of new Longicorn Coleoptera from East Africa. *The Annals and Magazine of Natural History*, 2 (7) 7: 40-59.
- Gemminger M. & von Harold E., 1873. – *Catalogus coleopterorum hucusque descriptorum synonymicus et systematicus*, 10: 2989-3232 & index.
- Hunt J.W. & Breuning S., 1956. – A Check List of South African Lamiinae (Coleoptera, Cerambycidae). *Durban Museum Novitates*, 4 (19): 329-368.
- Hunt J.W. & Breuning S., 1957. – New Lamiinae (Coleoptera, Cerambycidae) from South Africa. *Durban Museum Novitates*, 5 (5): 51-70.
- Morati J., 2003. – Catalogue des types de Lamiinae (Coleoptera, Cerambycidae) conservés au Muséum d'histoire naturelle, Genève. *Revue Suisse de Zoologie*, 110 (1): 155-206.
- Pascoe F.P., 1864. – Additions to the Longicornia of South Africa, including a few Species from Old Calabar and Madagascar. *The Journal of Entomology*, 2 (11): 270-291, pl. XIII. <http://www.biodiversitylibrary.org/item/47912> § décembre 1864 §
- Siess W., 1981. – Neue Lamiiden aus Obervolta (Coleoptera Cerambycidae). *Reichenbachia Museum Tierkung Dresden*, 19 (29): 175-178; 1 figure.
- Sudre J. & Vitali C., 2016. – Synonymie, combinaisons, statuts nouveaux et captures intéressantes concernant quelques lamiaires africains (Coleoptera, Cerambycidae, Lamiinae). *Les Cahiers Magellanes*, (NS) 21: 60-71, 1 figure.
- Sudre J. & Téocchi P., 2002. – Contribution à la connaissance des longicornes du Malawi et description de nouveaux taxa (Coleoptera, Cerambycidae, Lamiinae). *Les Cahiers Magellanes*, 14: 1-38, 27 Colour figures.
- Sudre J. & Téocchi P., 2009. – Notes synonymiques et chorologie concernant quelques Lamiaires africains (Insecta, Coleoptera, Cerambycidae, Lamiinae). *Bulletin Mensuel de la Société Linnéenne de Lyon*, 78 (5-6): 105-110.
- Téocchi P., 1985. – Quelques rectifications systématiques sur les Lamiaires (Suite) (Col. Cerambycidae). *Bulletin de la Société Entomologique de Mulhouse*: 25-26.
- Téocchi P., 1988. – Synonymies, diagnoses et bionomie de quelques lamiaires africains du genre *Eunidia* Erichson (Coleoptera, Cerambycidae). II. *Elytron*, 2: 15-22.
- Téocchi P., 1989. – Notes concernant divers Lamiaires africains (Coleoptera Cerambycidae Lamiinae). *Bulletin de la Société Sciences Nat* (Venette), 60 [1988]: 25-28.
- Téocchi P., 1990a. – Diagnoses et rectifications systématiques concernant quelques Lamiaires africains (Coleoptera Cerambycidae Lamiinae). *Bulletin de la Société Sciences Nat* (Venette), 64: 19-22, 6 figures.
- Téocchi P., 1990b. – Quelques rectifications systématiques sur les Lamiaires (Coleoptera Cerambycidae) (Suite). *Bulletin de la Société Entomologique de Mulhouse*: 11-12.
- Téocchi P., 1991. – Synonymies, corrections et observations relatives à la note de St. von Breuning (Coleoptera Cerambycidae Lamiinae) (suite et fin). *Bulletin de la Société Sciences Nat* (Venette), 71: 9-11.
- Téocchi P., 1992. – Synonymies, diagnoses et bionomie de quelques Lamiaires africains du genre *Eunidia* Erichson (Coleoptera: Cerambycidae). IV. *Elytron*, 5 [1991]: 71-83, 17 figures.
- Téocchi P., 1993a. – Observations sur le terrain. Plantes-hôtes de quelques Cerambycidae africains. *Bulletin de la Société Sciences Nat* (Venette), 78: 37-38, 7 figures.
- Téocchi P., 1993b. – Synonymies, diagnoses et bionomie de quelques Lamiaires africains du genre *Eunidia* Erichson (Coleoptera, Cerambycidae). V. *Lambillionea*, 93 (3): 300-306, 12 figures, 1pl.
- Téocchi P., 1994a. – Diagnose de lamiaires africains nouveaux (Coleoptera, Cerambycidae, Lamiinae). *Lambillionea*, 94 (2) 1: 206-210, 10 figures.
- Téocchi P., 1994b. – Synonymies et chorologie de quelques Prosopocerini (Coleoptera Cerambycidae). *Bulletin Mensuel de la Société Linnéenne de Lyon*, 63 (4): 117-124.
- Téocchi P., 2000a. – Synonymies, diagnoses et bionomie de quelques Cérambycides africains (Coleoptera Cerambycidae) (suite 1). *Lambillionea*, 100 (4) 2: 639-652, 17 figures.
- Téocchi P., 2000b. – Note sur une petite collection de Lamiaires du Lusée d'Helsinki (Coleoptera, Cerambycidae, Lamiinae). *Les Cahiers Magellanes*, 1: 1-32, 5 figures.
- Téocchi P. & Sudre J., 2002. – Synonymies, diagnoses et bionomie de quelques lamiaires africains (8e note), 1re partie (Coleoptera, Cerambycidae, Lamiinae). *Les Cahiers Magellanes*, 11: 1-22, 12 figures.
- Téocchi P., Jiroux E. & Sudre J., 2004. – Synonymies, diagnoses et bionomie de quelques Cerambycidae africains (10 ème note) Première partie (Coleoptera, Cerambycidae). *Les Cahiers Magellanes*, 38: 1-30, 18 figures.
- Téocchi P., Jiroux E. & Sudre J., 2007. – Synonymies, diagnoses et bionomie de quelques Lamiaires africains (11e note) (Coleoptera, Cerambycidae, Lamiinae). *Les Cahiers Magellanes*, 65: 1-25, 25 figures.
- Téocchi P., Sudre J. & Jiroux E., 2008. – Synonymies, diagnoses et bionomie de quelques Lamiaires africains (12e note) (Coleoptera, Cerambycidae, Lamiinae). *Les Cahiers Magellanes*, 85: 1-28, 24 figures.
- Téocchi P., Sudre J. & Jiroux E., 2010a. – Synonymies, diagnoses et bionomie de quelques Lamiaires africains (13e note) (Coléoptères Cerambycidae Lamiinae). *Les Cahiers Magellanes*, 107: 1-24, 36 figures.
- Téocchi P., Sudre J. & Jiroux E., 2010b. – Synonymies, diagnoses et bionomie de quelques Lamiaires africains (14e note) (Coléoptera, Cerambycidae, Lamiinae). *Les Cahiers Magellanes*, 111: 1-24, 49 figures.
- Téocchi P., Sudre J. & Jiroux E., 2010c. – Synonymies, diagnoses et bionomie de quelques Lamiaires africains (16e note) (Coleoptera, Cerambycidae Lamiinae). *Les Cahiers Magellanes*, (NS) 2: 1-30, 35 figures.
- Téocchi P., Sudre J. & Jiroux E., 2014a. – Synonymies, diagnoses et bionomie de quelques Lamiaires africains (19e note) (Coleoptera, Cerambycidae, Lamiinae). *Les Cahiers Magellanes*, (NS) 14: 16-50, 76 figures.
- Téocchi P., Sudre J. & Jiroux E., 2014b. – Synonymies, diagnoses et bionomie de quelques Lamiaires africains (20e note) (Coleoptera, Cerambycidae, Lamiinae). *Les Cahiers Magellanes*, (NS) 15: 51-95, 66 figures.
- Téocchi P., Sudre J. & Jiroux E., 2015a. – Synonymies, diagnoses et bionomie de quelques Lamiaires africains (21e note) (Coleoptera, Cerambycidae, Lamiinae). *Les Cahiers Magellanes*, (NS) 17: 35-85, 98 figures.
- Téocchi P., Sudre J. & Jiroux E., 2015b. – Synonymies, diagnoses et bionomie de quelques Lamiaires africains, 22e note, 1ère partie (Coleoptera, Cerambycidae, Lamiinae). *Les Cahiers Magellanes*, (NS) 18: 94-116, 32 figures.

- Thomson J., 1868. – Matériaux pour servir à une révision des desmiphorites (lamites, cérambycides, coléoptères). *Physis Recueil d'Histoire Naturelle*, Paris, 2 (6): 101-146.
- Vitali C. & Sudre J., 2015. – Description de deux lamiaines nouveaux d'Afrique équatoriale (Coleoptera, Cerambycidae, Lamiinae). *Entomologia Africana*, 20 (2): 46-51, pl. VIII, 4 figures.
- Vitali C., 2020. – Notes et mises au point concernant quelques Prosopocerini avec la description de deux nouvelles espèces (Coleoptera Cerambycidae Lamiinae). *Les Cahiers Magellanes*, (NS) 36: 14-21, 8 figures.

Contribution des auteurs ⁽¹⁾

Publisher correspondence. – RB

Writing the article. – RB & JS

Description. – RB, JS & MB

Article proofreading. – RB, JS & MB

Bibliographic work. – RB & JS

Material study. – RB, JS & MB

Author of the figures. – JS (Fig. 4a, 16), MB (Fig. 2, 4b, 5, 10c, 11c, 12e, 18, 19, 20)

⁽¹⁾ **RB** = Riana Bate – **JS** = Jérôme Sudre – **MB** = Michael D. Bate

Résumé

Bate R., Sudre J. & Bate M. D., 2023. – Description de deux nouvelles espèces, nouvelles synonymies et nouvelles données concernant plusieurs espèces africaines des genres *Prosopocera* Blanchard et *Eunidia* Erichson (Coleoptera, Cerambycidae, Lamiinae). *Faunitaxys*, 11(62): 1 – 19.

De nouvelles informations sur plusieurs Lamiinae africains sont fournies. Les synonymes suivants sont proposés : *Prosopocera* (*Alphitopola*) *albosignata* Breuning, 1938 et *P. (A.) bicornuta* Breuning, 1971 deviennent des synonymes de *P. (A.) paykullii* (Fähræus, 1872) ; *P. (Dalterus) matillai* Báguena, 1952 devient un synonyme de *P. (A.) gahani* (Aurivillius, 1925) ; *P. (D.) holoflava* Breuning, 1981 devient un synonyme de *P. (A.) infragrisea* Breuning, 1950. *Eunidia diversipes* Breuning, 1961 devient un synonyme de *E. timida* Pascoe, 1864 ; *E. jeanneli* Breuning, 1939 devient un synonyme de *E. pygmaea* Fähræus, 1872 ; *E. vagefasciata* Breuning, 1955 devient un synonyme de *E. subfasciata* Gahan 1898 ; *E. flavoornata* Breuning, 1981 devient un synonyme de *E. thomseni* Distant, 1898 ; *E. obliquealbovittata* Hunt & Breuning, 1957 devient un synonyme de *E. fasciata* Gahan, 1904 ; *E. mediomaculatoidea* Breuning, 1981 devient un synonyme de *E. bifasciata* Aurivillius, 1911 ; *E. subnebulosa* Breuning, 1961 devient un synonyme de *E. flavomarmorata* Breuning, 1939 ; *E. olivacea* Breuning, 1954 devient un synonyme de *E. albopicta* Breuning, 1939 ; *E. politzari* Siess, 1981 devient un synonyme de *E. similis* Breuning, 1942 ; *E. deceptrix camerunica* Teocchi, 1994 et *E. deceptrix gaboncola* Teocchi, Jiroux & Sudre, 2004 sont des synonymes de *E. lujai* Breuning 1951. Deux nouvelles espèces d'Afrique du Sud sont décrites : *P. (D.) ndumoensis* **sp. nov.** et *E. albomaculata* **sp. nov.**

Mots-clés. – Coleoptera, Cerambycidae, Lamiinae, *Prosopocera*, *ndumoensis*, *Eunidia*, *albomaculata*, taxonomie, nouveaux synonymes, nouvelles espèces, répartition, Afrique.

Derniers articles publiés

- Gouverneur X., 2023. – Description d'une nouvelle espèce du genre *Saperdoglenea* Breuning, 1964 de Malaisie (Coleoptera, Cerambycidae). *Faunitaxys*, 11(51): 1 – 4. [https://doi.org/10.57800/faunitaxys-11\(51\)](https://doi.org/10.57800/faunitaxys-11(51))
- Qiu L., 2023. – New and little-known species of *Corymbitodes* from China (Coleoptera: Elateridae: Dendrometrinae). *Faunitaxys*, 11(52) : 1 – 7. [https://doi.org/10.57800/faunitaxys-11\(52\)](https://doi.org/10.57800/faunitaxys-11(52))
- Háva J., 2023. – A new *Pseudotriphyllus* Reitter, 1880 species (Coleoptera: Mycetophagidae) from the Azores. *Faunitaxys*, 11(53) : 1 – 2. [https://doi.org/10.57800/faunitaxys-11\(53\)](https://doi.org/10.57800/faunitaxys-11(53))
- Badry A., Saleh M., Sarhan M. M. H., Younes M., Lourenço W. R. & Ythier E., 2023. – A new species of *Leiurus* Ehrenberg (Scorpiones: Buthidae) from Sinai, Egypt and comments on its relationships with *L. quinquestriatus* and *L. hebraeus* using morphological and molecular evidence. *Faunitaxys*, 11(54): 1 – 10. [https://doi.org/10.57800/faunitaxys-11\(54\)](https://doi.org/10.57800/faunitaxys-11(54))
- Zhao M.-Z. & Pham P.V., 2023. – Two new species of the genus *Anomala* Samouelle from Vietnam and Laos, with a checklist of Vietnamese *Anomala* (Coleoptera: Scarabaeidae: Rutelinae). *Faunitaxys*, 11(55): 1 – 9. [https://doi.org/10.57800/faunitaxys-11\(55\)](https://doi.org/10.57800/faunitaxys-11(55))
- Santos-Silva A. & Botero J. P., 2023. – Taxonomic and geographical notes on *Leptostylus* LeConte, 1852 (Coleoptera, Cerambycidae, Lamiinae, Acanthocinini) with the descriptions of two new species. *Faunitaxys*, 11(56): 1 – 9. [https://doi.org/10.57800/faunitaxys-11\(56\)](https://doi.org/10.57800/faunitaxys-11(56))
- Lourenço W. R. & Velten J., 2023. – A second species of *Archaeoscorpions* Lourenço, 2015 from Cretaceous Burmese amber (Scorpiones: Palaeoescorpionidae). *Faunitaxys*, 11(57): 1 – 4. [https://doi.org/10.57800/faunitaxys-11\(57\)](https://doi.org/10.57800/faunitaxys-11(57))
- Rubio G.D., Stolar C.E., Baigorria J.E.M. & Baptista R.L.C., 2023. – Description of two new species of jumping spider *Colonus* F. O. Pickard-Cambridge, 1901 (Araneae: Salticidae) from Brazil and Argentina. *Faunitaxys*, 11(58): 1 – 10. [https://doi.org/10.57800/faunitaxys-11\(58\)](https://doi.org/10.57800/faunitaxys-11(58))
- Santos-Silva A. & Monné M. A., 2023. – A new species and new Brazilian state record in *Lepturges* (*Lepturges*) Bates (Coleoptera, Cerambycidae, Lamiinae). *Faunitaxys*, 11(59): 1 – 4. [https://doi.org/10.57800/faunitaxys-11\(59\)](https://doi.org/10.57800/faunitaxys-11(59))
- Háva J. & Coache A., 2023. – A contribution to knowledge of Mycetophagidae (Coleoptera) from Benin. *Faunitaxys*, 11(60): 1 – 4. [https://doi.org/10.57800/faunitaxys-11\(60\)](https://doi.org/10.57800/faunitaxys-11(60))
- Ythier E. & Giupponi A. P. L., 2023. – A new whip spider species of the genus *Charinus* Simon, 1892 (Amblypygi: Charinidae) from French Guiana. *Faunitaxys*, 11(61): 1 – 5. [https://doi.org/10.57800/faunitaxys-11\(61\)](https://doi.org/10.57800/faunitaxys-11(61))

Faunitaxys

Volume 11, Numéro 62, Septembre 2023

SOMMAIRE

Description de deux nouvelles espèces, nouvelles synonymies et nouvelles données concernant plusieurs espèces africaines des genres *Prosopocera* Blanchard et *Eunidia* Erichson (Coleoptera, Cerambycidae, Lamiinae).

Riana Bate, Jérôme Sudre & Michael D. Bate 1 – 19

CONTENTS

Description of two new species, with synonymies and new distribution records, for some species of African *Prosopocera* Blanchard and *Eunidia* Erichson (Coleoptera, Cerambycidae, Lamiinae).

Riana Bate, Jérôme Sudre & Michael D. Bate 1 – 19



Illustration de la couverture :

SANC Cerambycidae Collection.

Crédits:

Keita Matsumoto (Natural History Museum, London) : Fig. 1a&b, 6, 7a&b, 8c&d, 9a&b, 10a&b, 11a&b, 12c&d, 13a&b, 15, 17e-f.

Michael D. Bate : Fig. 1c-f, 2, 5, 10c&d, 11c&d, 12e&f, 18, 19, 20.

Stanislav Snäll : Fig. 3a&b, 8a&b, 12a&b, 14.

Mercedes París García (Museo Nacional de Ciencias Naturales, Madrid) : Fig. 3c&d.

Christoph Germann (Naturhistorisches Museum, Basel) : Fig. 7c&d.

Isabelle Zuercher (Naturhistorisches Museum, Basel) : Fig. 13c&d.

M. Hector (Iziko Museum of Cape Town) : Fig. 8e&f.

Zikhona Njeza (Iziko Museum of Cape Town) : Fig. 9c&d.

Jérôme Sudre : Fig. 4a, 16.

Stéphane Hanot (Musée Royal de l'Afrique Centrale, Tervuren) : Fig. 17a&b.

Elsa van Niekerk (Agricultural Research Council–Plant Health & Protection) : Couverture.