



**HAL**  
open science

# Wind sensing and thigmomorphogenetic enhancement of secondary growth as a major contributor to the trait of biomechanical resistance to wind in a beech forest

Jana Dlouha, Thiéry Constant, François Ningre, Vivien Bonnesoeur, Bruno Moulia, Meriem Fournier

## ► To cite this version:

Jana Dlouha, Thiéry Constant, François Ningre, Vivien Bonnesoeur, Bruno Moulia, et al.. Wind sensing and thigmomorphogenetic enhancement of secondary growth as a major contributor to the trait of biomechanical resistance to wind in a beech forest. Functional Ecology Conference, Dec 2018, Nancy & Metz, France. hal-04215008

**HAL Id: hal-04215008**

**<https://hal.science/hal-04215008v1>**

Submitted on 3 Oct 2023

**HAL** is a multi-disciplinary open access archive for the deposit and dissemination of scientific research documents, whether they are published or not. The documents may come from teaching and research institutions in France or abroad, or from public or private research centers.

L'archive ouverte pluridisciplinaire **HAL**, est destinée au dépôt et à la diffusion de documents scientifiques de niveau recherche, publiés ou non, émanant des établissements d'enseignement et de recherche français ou étrangers, des laboratoires publics ou privés.



Distributed under a Creative Commons Attribution - NonCommercial - NoDerivatives 4.0 International License



# Wind sensing and thigmomorphogenetic as a major contributor to the trait of in a beech forest.



# enhancement of secondary growth biomechanical resistance to wind

Jana DLOUHA<sup>1</sup>, Thiéry CONSTANT<sup>1</sup>, François NINGRE<sup>1</sup>, Vivien BONNESOEUR<sup>1</sup>, Bruno MOULIA<sup>2</sup>, Meriem FOURNIER<sup>1</sup>

<sup>1</sup>Université de Lorraine, AgroParisTech, INRA, UMR Silva, F-54000 Nancy, France  
<sup>2</sup>Université Clermont Auvergne, INRA, PIAF, F-63000 Clermont-Ferrand, France

## Context

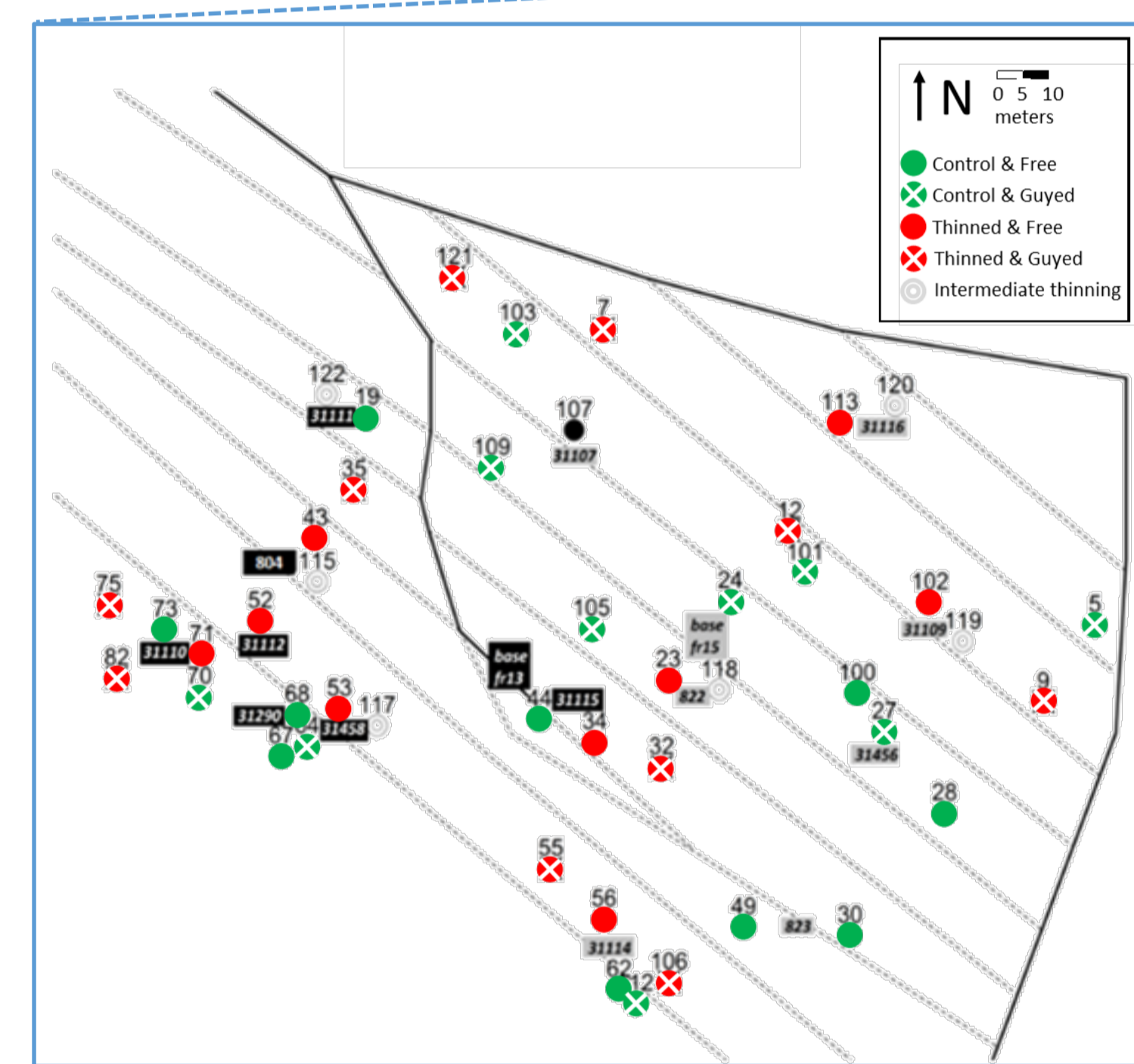
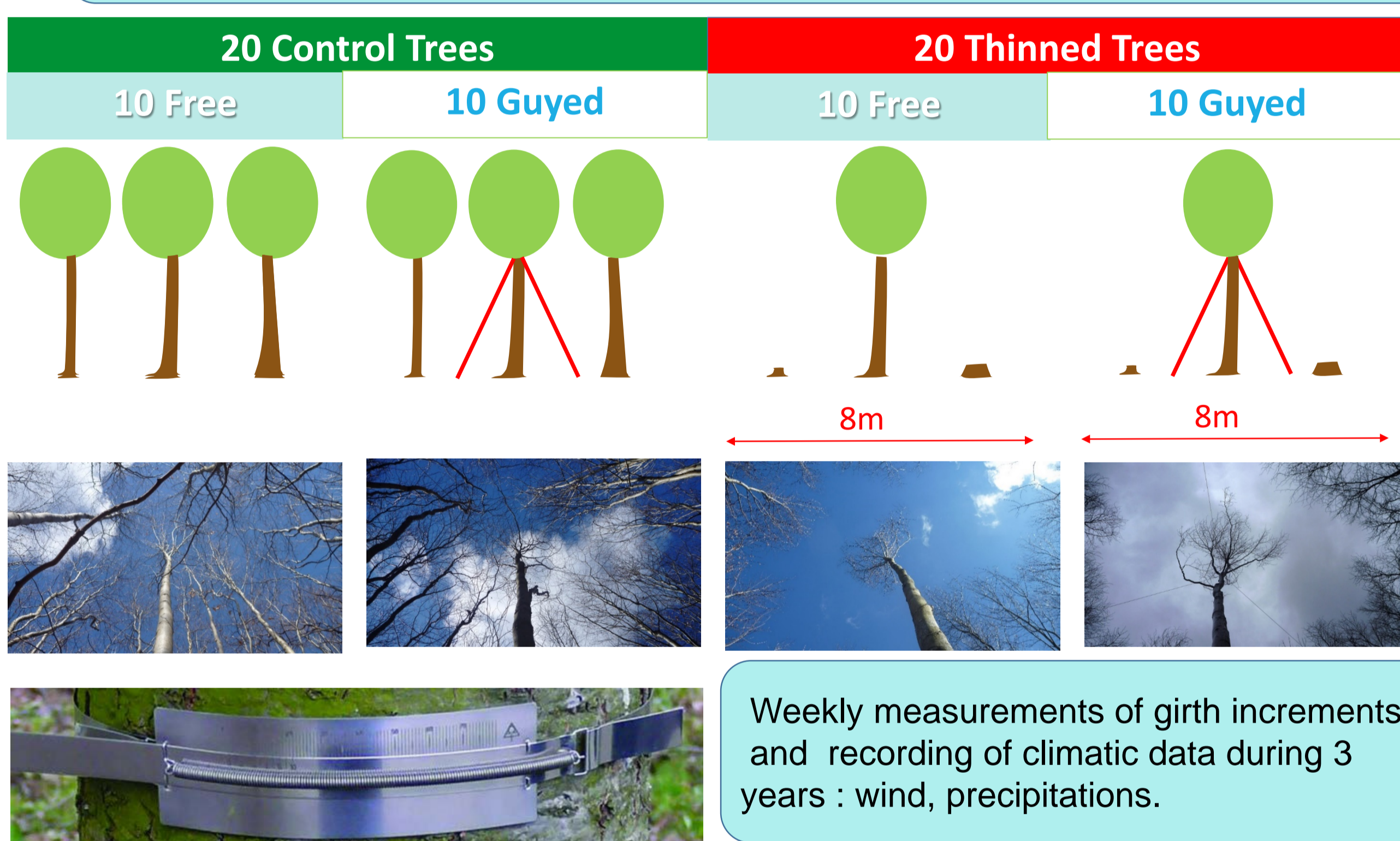
Keep an erected habit is essential requirement for the tree ability to survive and perform photosynthetic function. The mechanism responsible for acclimation of trees to mechanical cues induced by wind is called thigmomorphogenesis. Stimulations perceived by trees as a result of swaying are the longitudinal strains - elongation or compression - of wood living cells. In reaction to these stimuli, a tree modulates the spatial distribution of wood biomass to secure itself against the wind load by increasing its diameter growth to boost its stem resistance to breakage, by limiting its height growth to reduce the wind load, and, by developing its root system to improve its anchorage. (Telewski 1986, Coutand 2009).

## Objectives

- Provide a quantification of the rôle of thigmomorphogenesis in a silvicultural context, and more particularly during the reaction due to thinning since besides a better light exposure and lower competition, the thinned tree is also more exposed to wind with less support from its neighbors.
- Focus on one of the most important hardwood species in Europe, knowing that works concerning thigmomorphogenesis were mainly carried out on conifers except for laboratory studies on poplar trees.

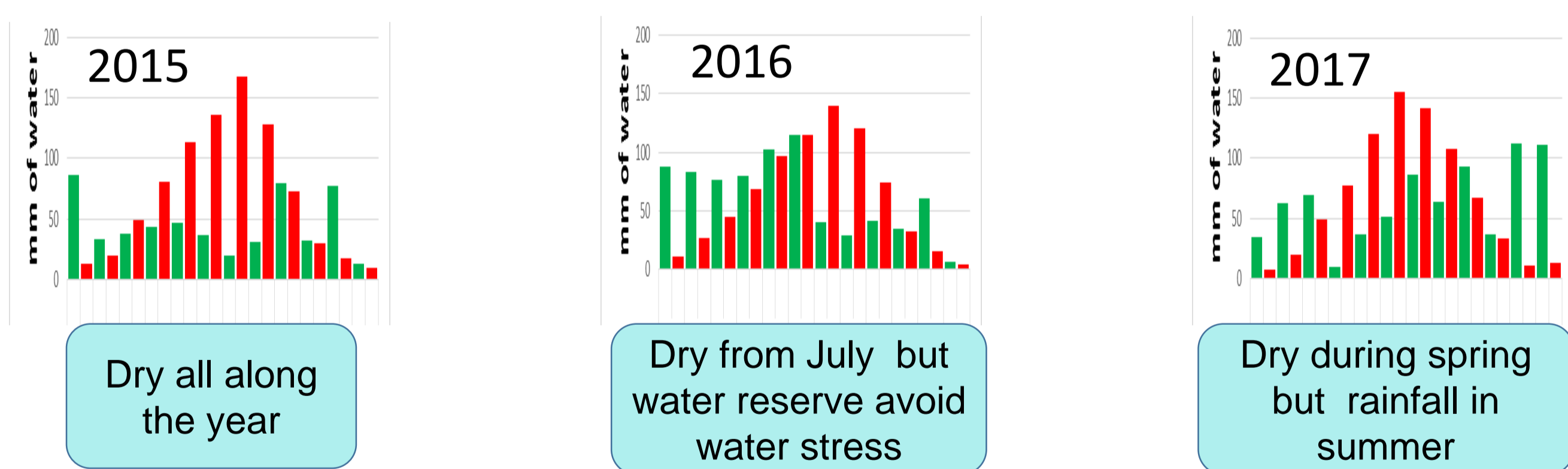
## Materials and Methods

In the Haye State Forest close to Nancy, a stand of beech poles with a rather high density was selected at the end of 2014 (DBH ~13 cm, Ho ~ 13 m, RDI = 0.87, Age ~30 years) 40 well-conformed trees were selected and split into 4 groups representative of the within-stand variation of trees size, as follows:

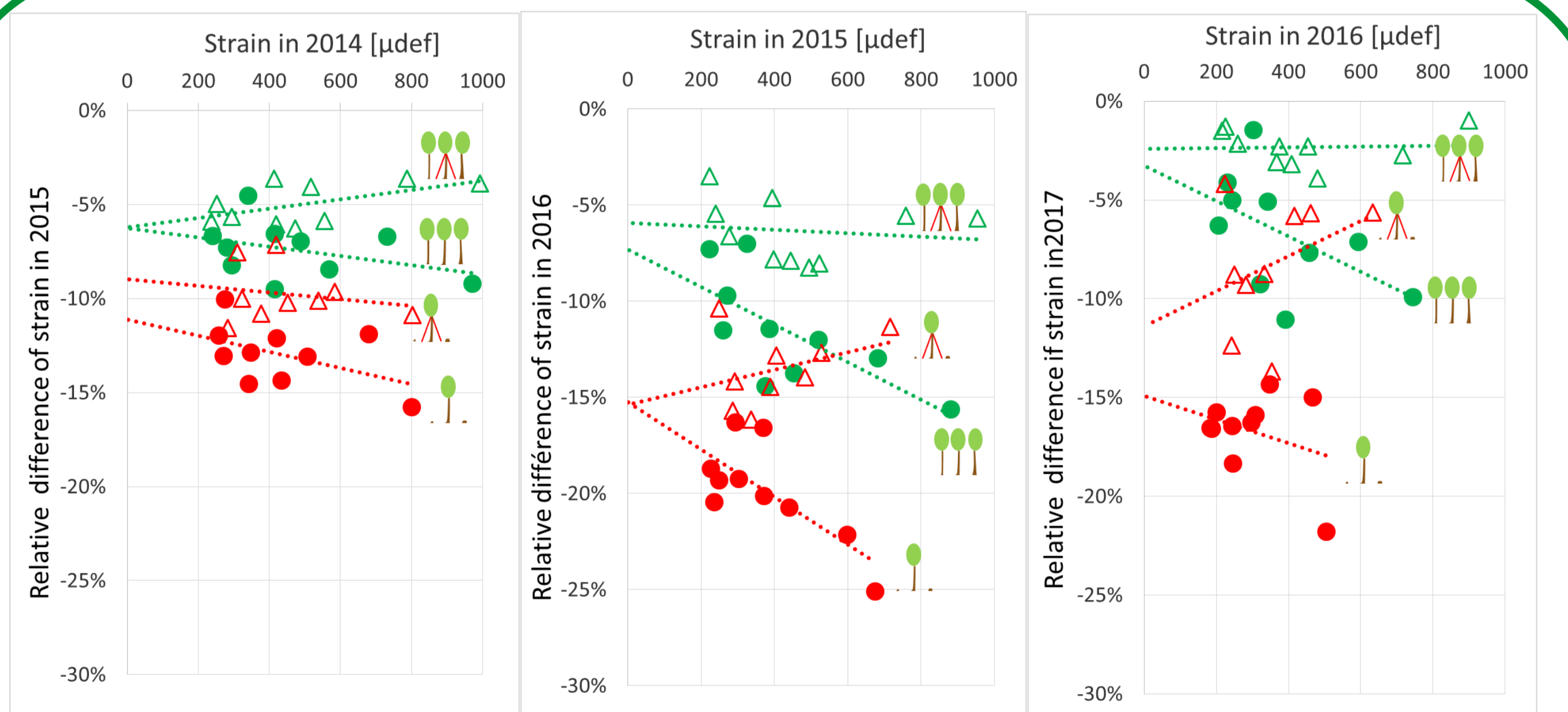
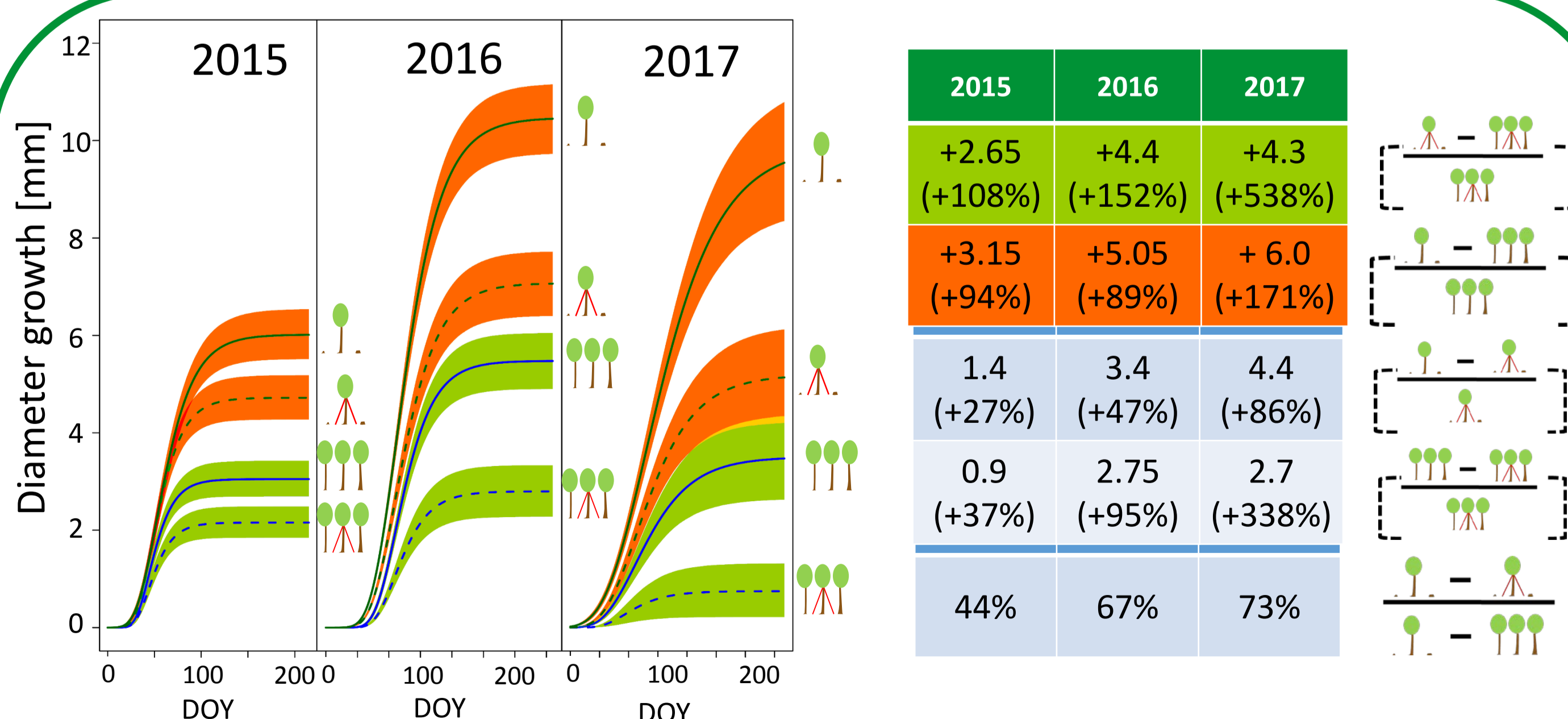
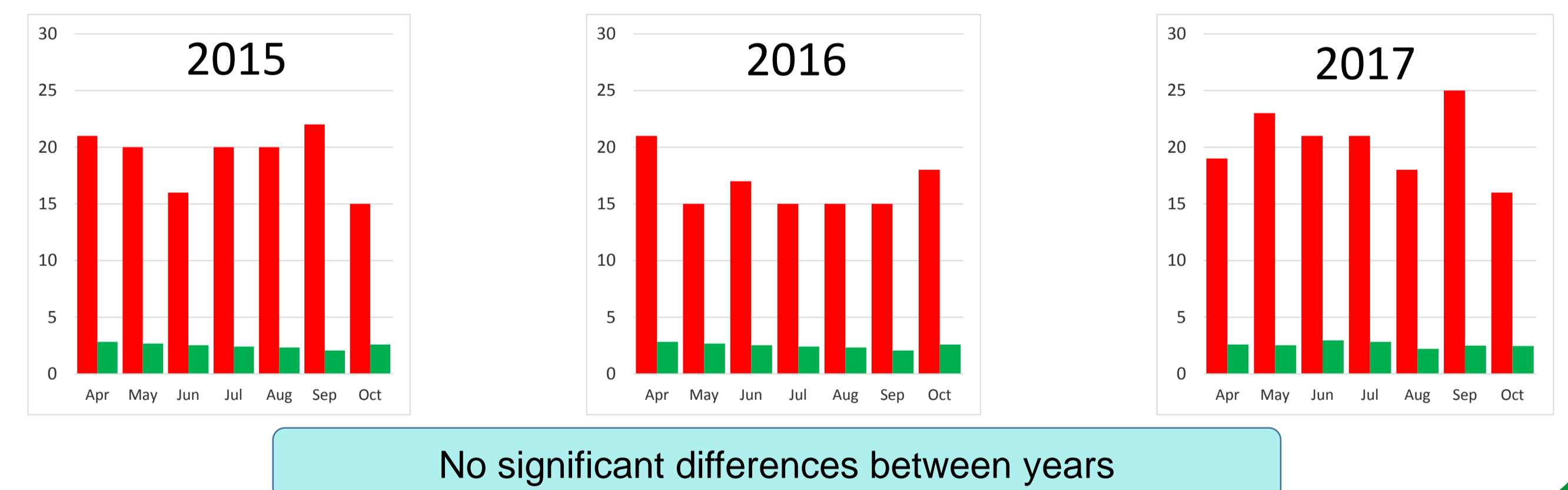


## Results and Discussion

### Evaporation and Precipitations Data [mm of water]



### Wind Speed Data [m.s<sup>-1</sup>] Max & Mean / month



The positive effect of thinning on diametral growth is more pronounced for free to sway trees than for guyed trees. The limitation of tree motion always decreases diametral growth with a more pronounced effect for thinned trees. The ability to move under wind corresponds to 45% to 73% of the annual diametral increment resulting from thinning.

Assuming the occurrence of the same flexural moment, the simulation of the reduction of strains induced by the annual diametral increment revealed a trend to linear relationships with the preceding year strains : small trees seem more responsive to mechanical cues, and when mechanical signals were impeded, the reduction tend to decrease, resulting in a more risky situation.