

CIRCULARITY AND RESILIENCE

From multidisciplinary experimentation to urban design



Marie Asma Ben Othmen
Associate professor in
Environmental and agricultural
economics,
Institut Polytechnique UniLaSalle,
Rouen (FR)



Gabriella Trotta-Brambilla
Associate professor in Architecture
and urbanism,
École Nationale Supérieure
d'Architecture de Normandie,
Rouen (FR)





The Seine Valley, a vulnerable territory

Le Havre

Rives-en-Seine

Rouen

Source gallica.bnf.fr / Bibliothèque nationale de France

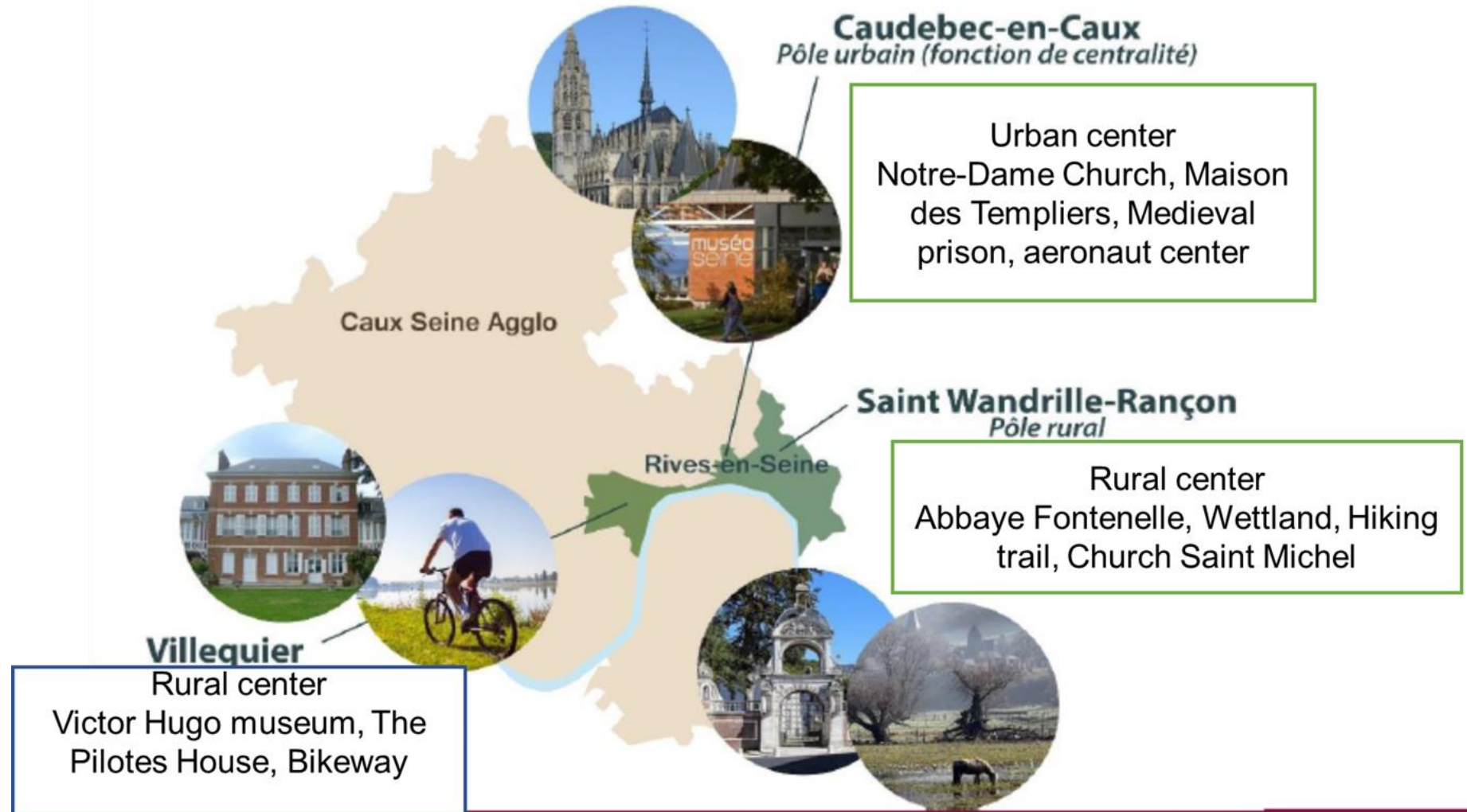


Municipality formed on January 1st, 2016

Total area: 34 Km²

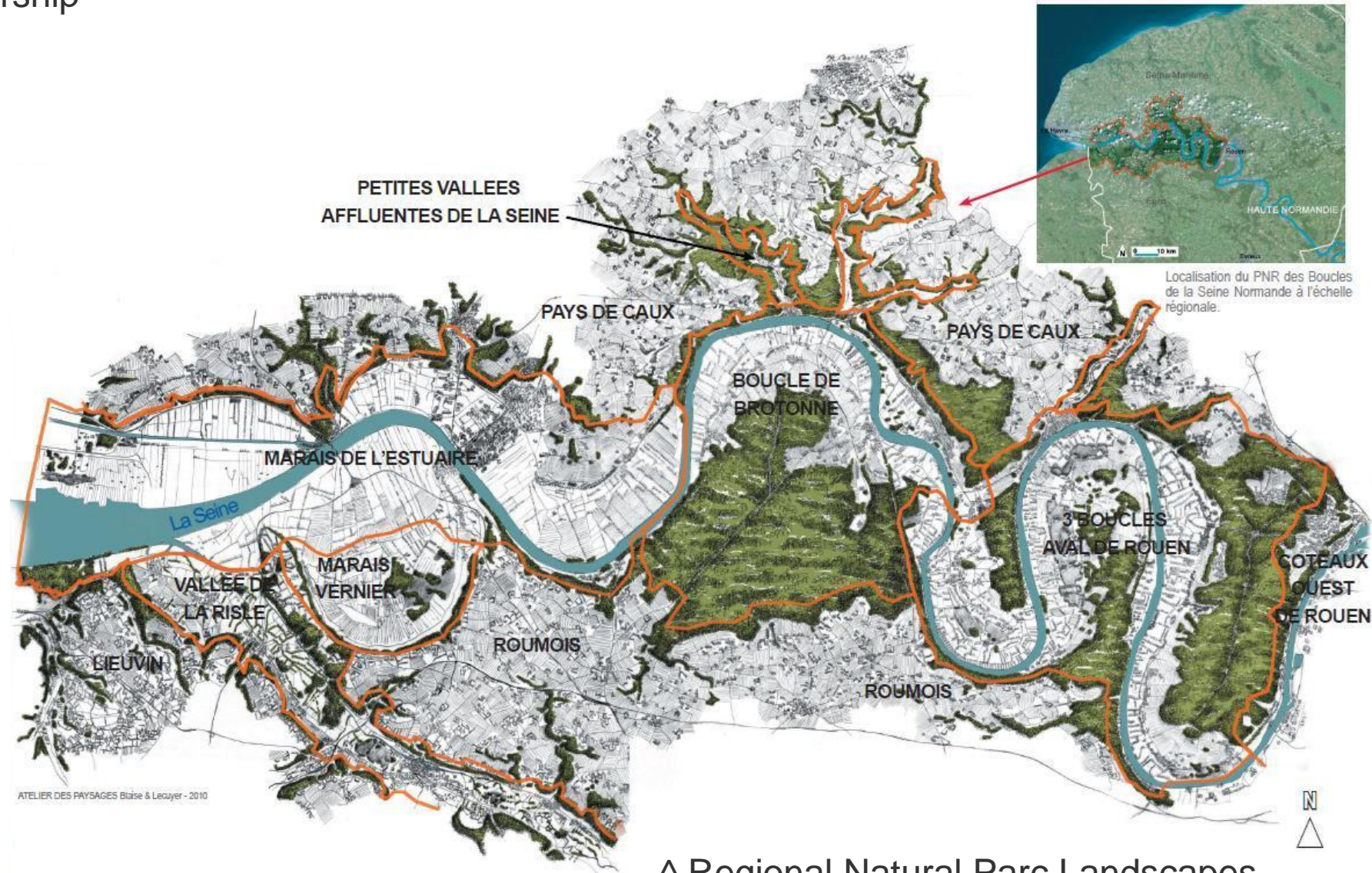
Population: 4259

A rich cultural history, natural resources and landscapes





< Partnership



^ Regional Natural Parc Landscapes



Rives-en-Seine, « little town of tomorrow »





Rives-en-Seine, wetlands and the Seine River





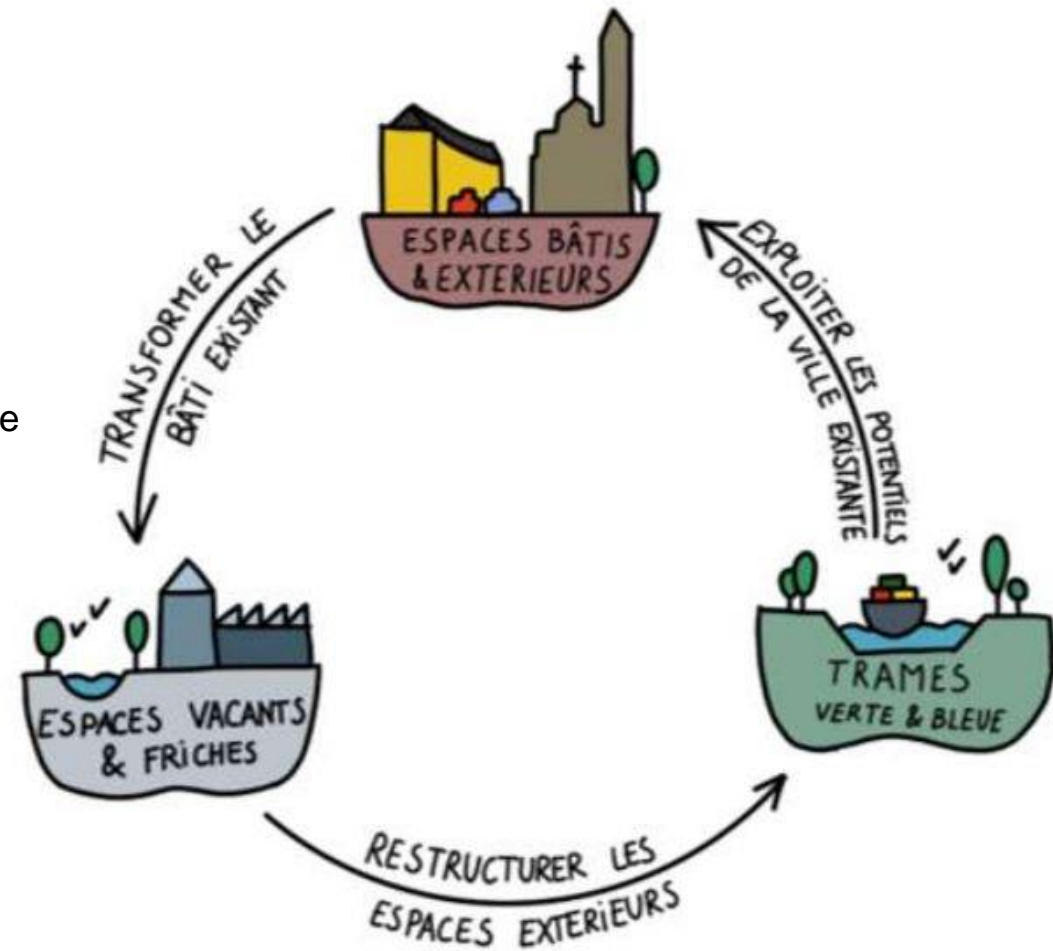
the “3-R
vision”:
rethink,
rebuild,
revitalize



Bastien Coriton,
Mayor of
Rives-en-Seine



-  built heritage
-  public spaces to adapt
-  buildings to transform
-  walkable pathways
-  water streams
-  existing porosities
-  porosities to create
-  walkable pathway to create
-  touristic attraction
-  transformable area



“Outside the walls” workshop: multidisciplinary experimentation with students and professors



École
nationale supérieure
d'architecture
de Normandie

UniLaSalle
Terre & Sciences





Methodological steps

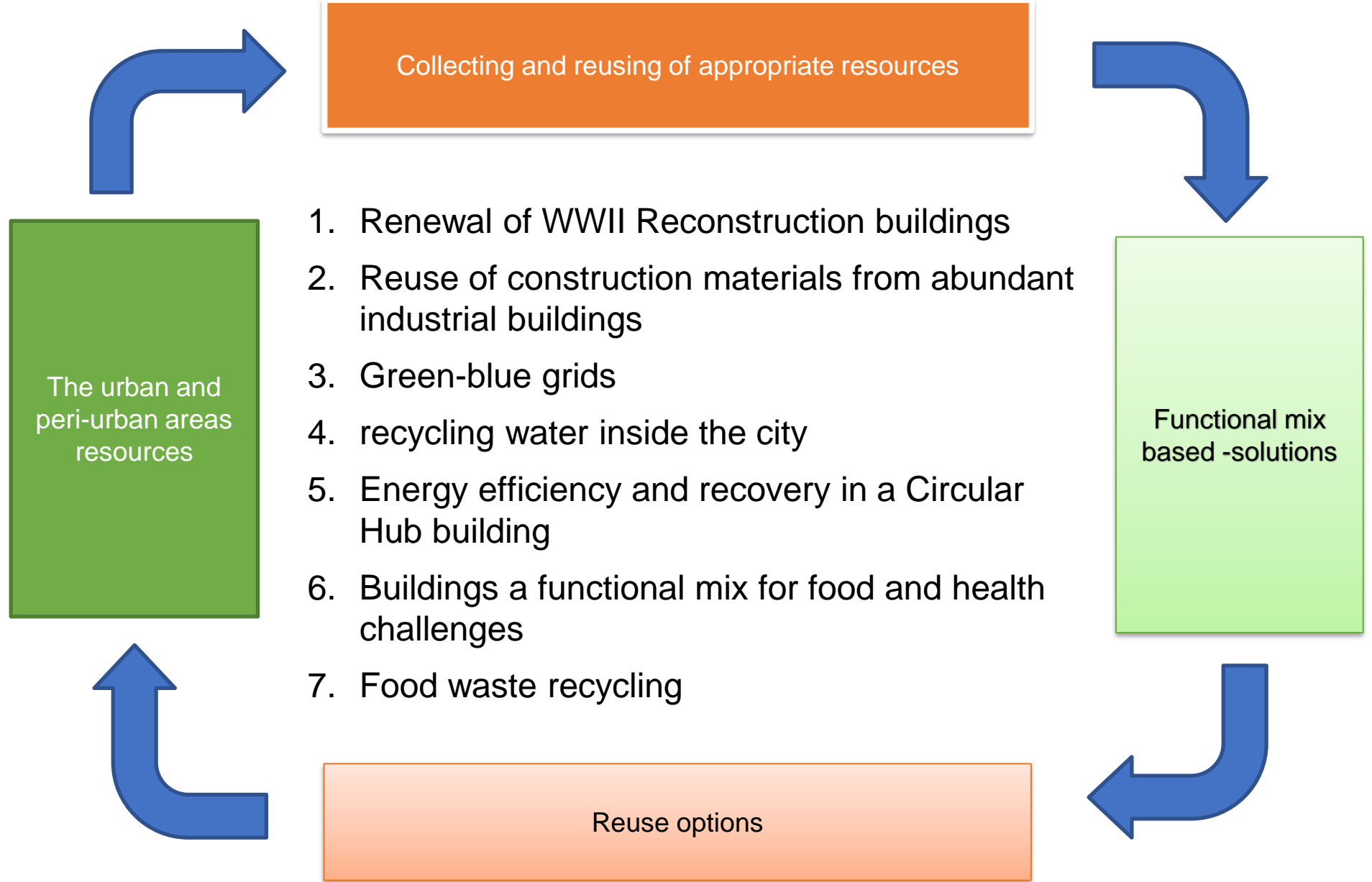
context understanding of the circularity approach and how it applies to Rives-en-Seine

identifying resources flows

debates with stakeholders

first guidelines for a local development project

Projects options





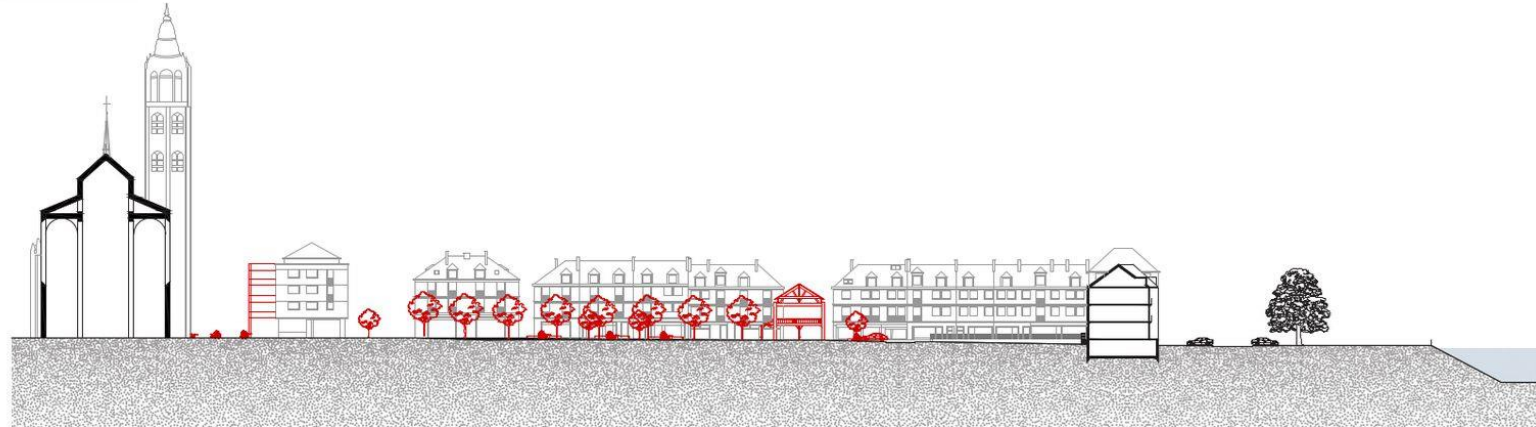
Panoramic view in 1948



Panoramic view in 1954

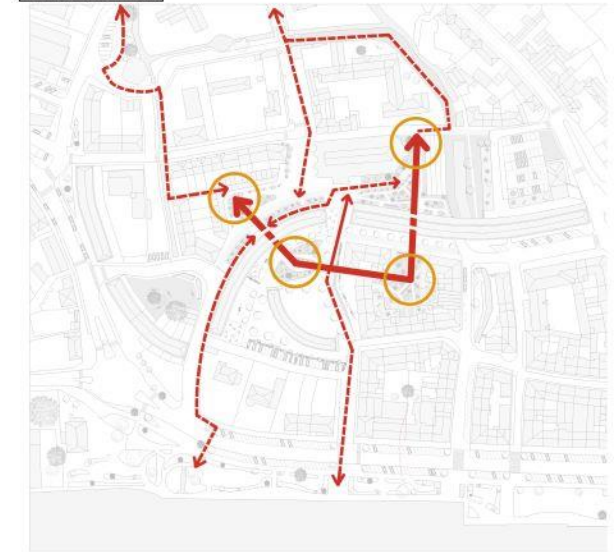
1. Renewal of WWII Reconstruction buildings

COUPE URBAINE AA

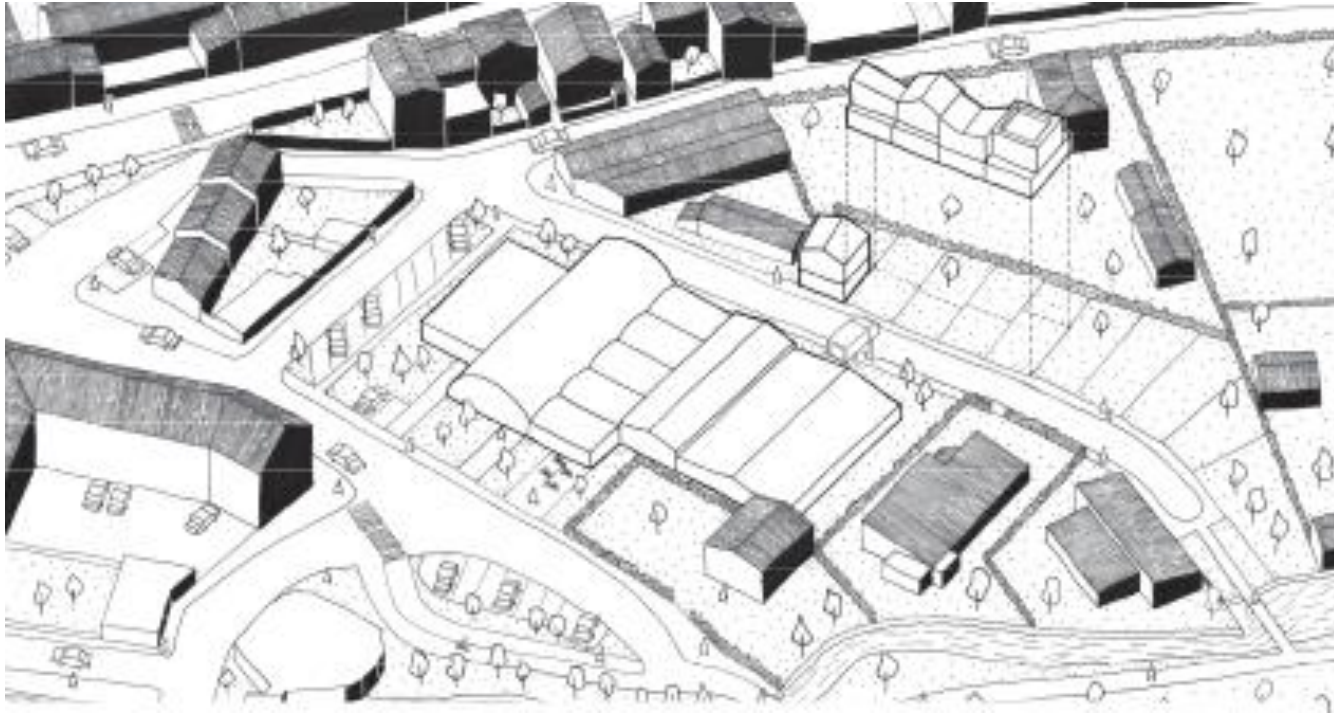


Actual view of the heart of a block

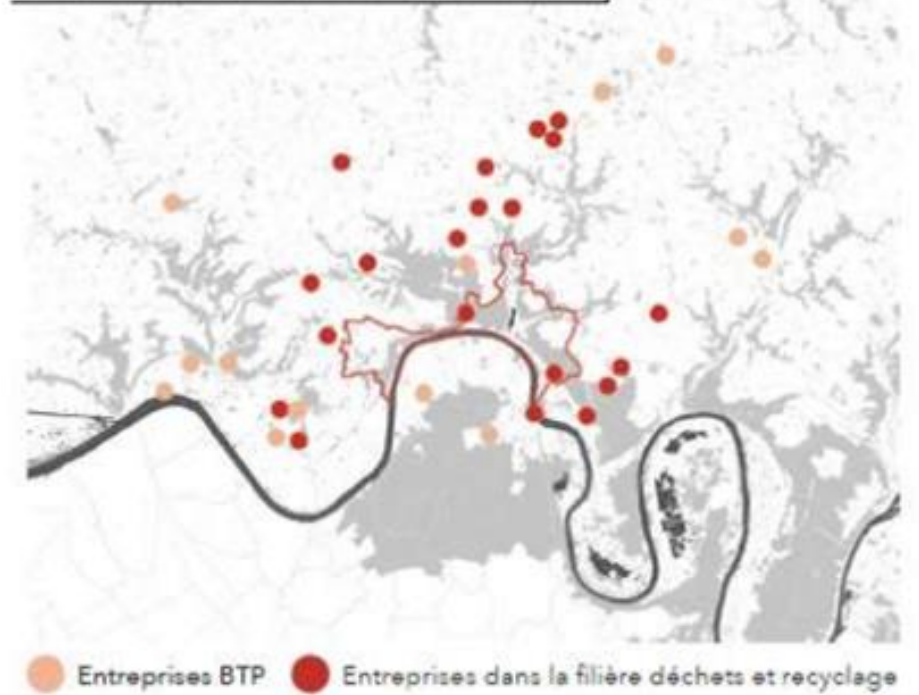
AXES DIRECTEURS



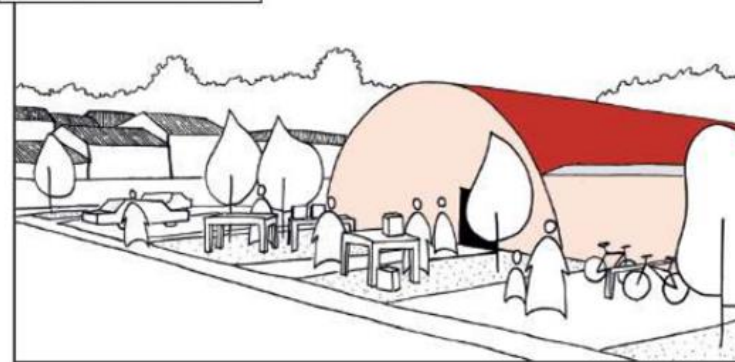
2. Reuse of construction materials from abundant industrial buildings



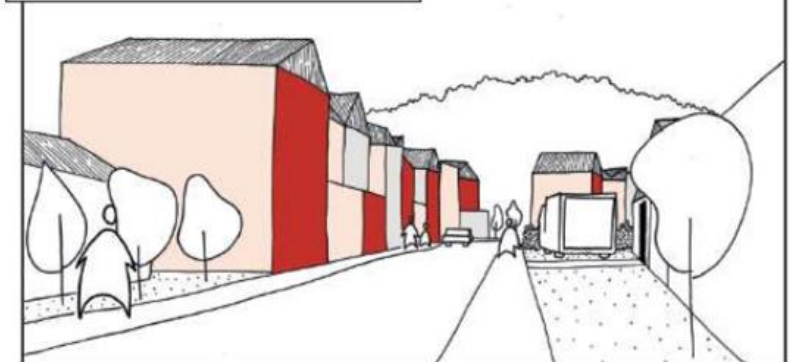
ENTREPRISES À PROXIMITÉ DE RIVES-EN-SEINE



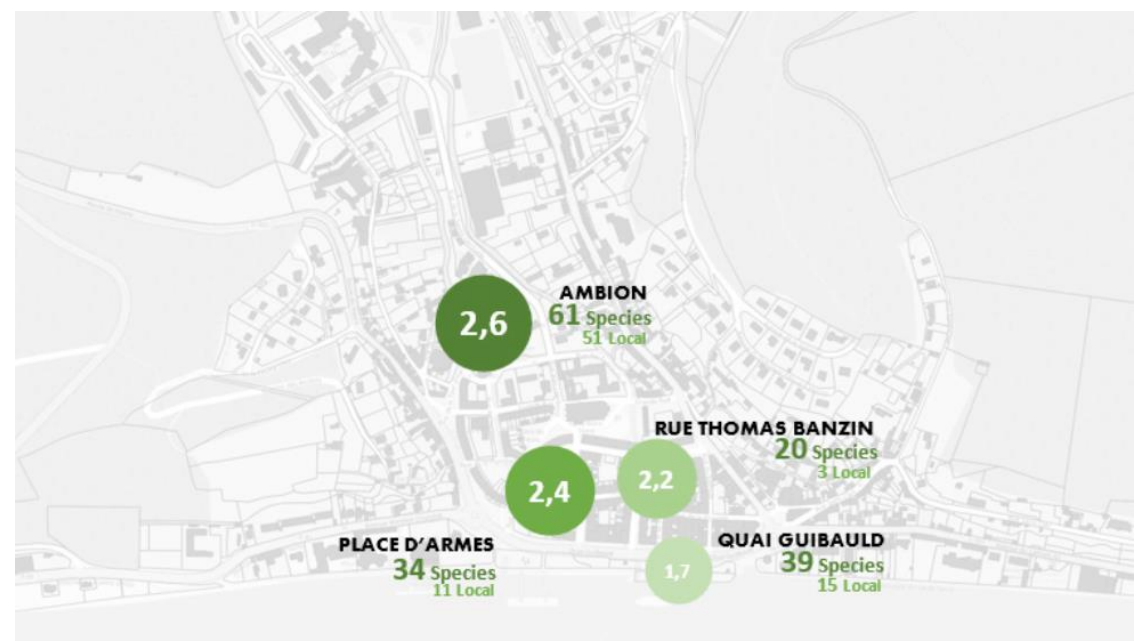
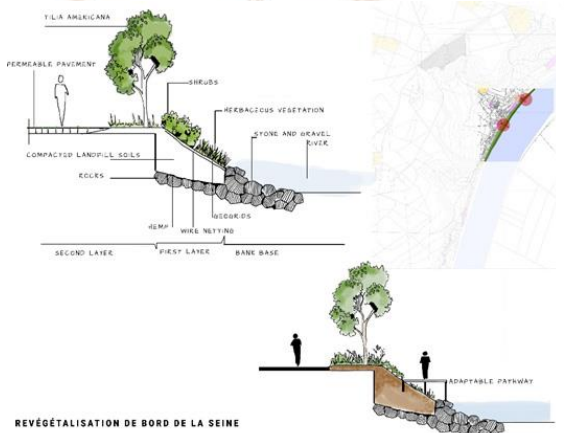
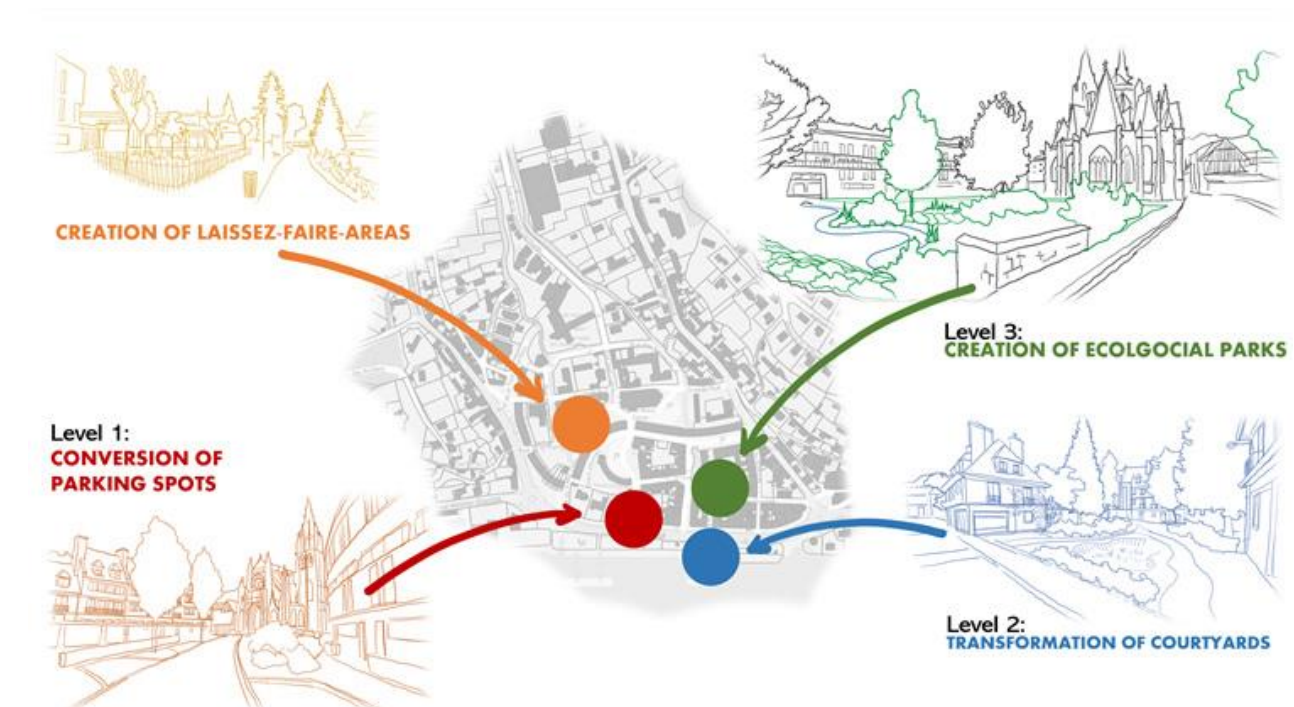
ENTRÉE DE LA RESSOURCERIE



MAISONS CONSTRUITES À PARTIR DU RÉEMPLOI



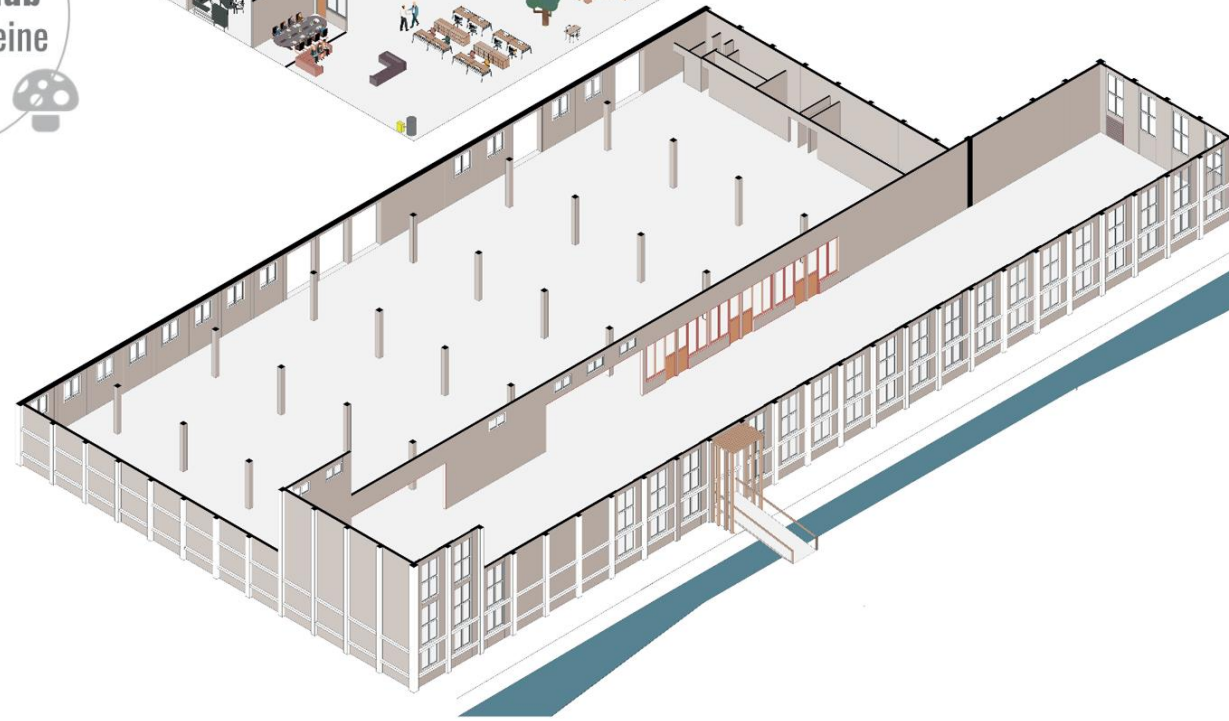
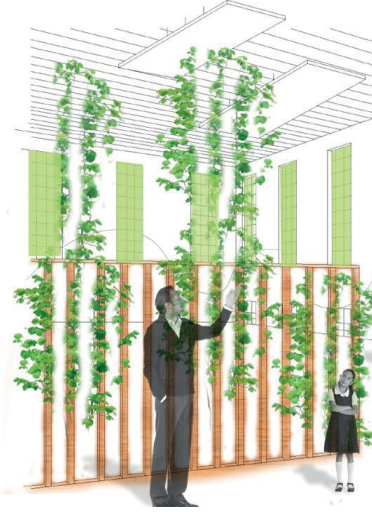
3. Green-blue grids



4. recycling water inside the city

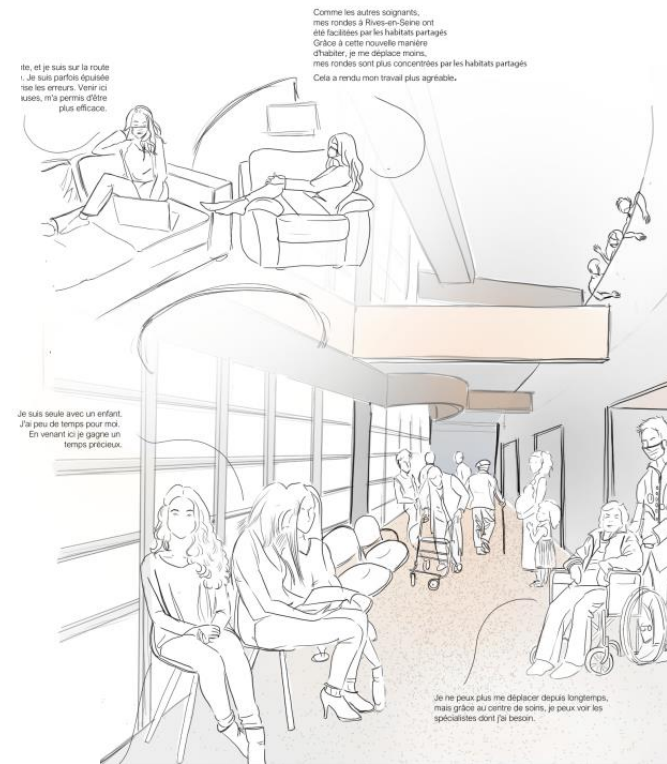
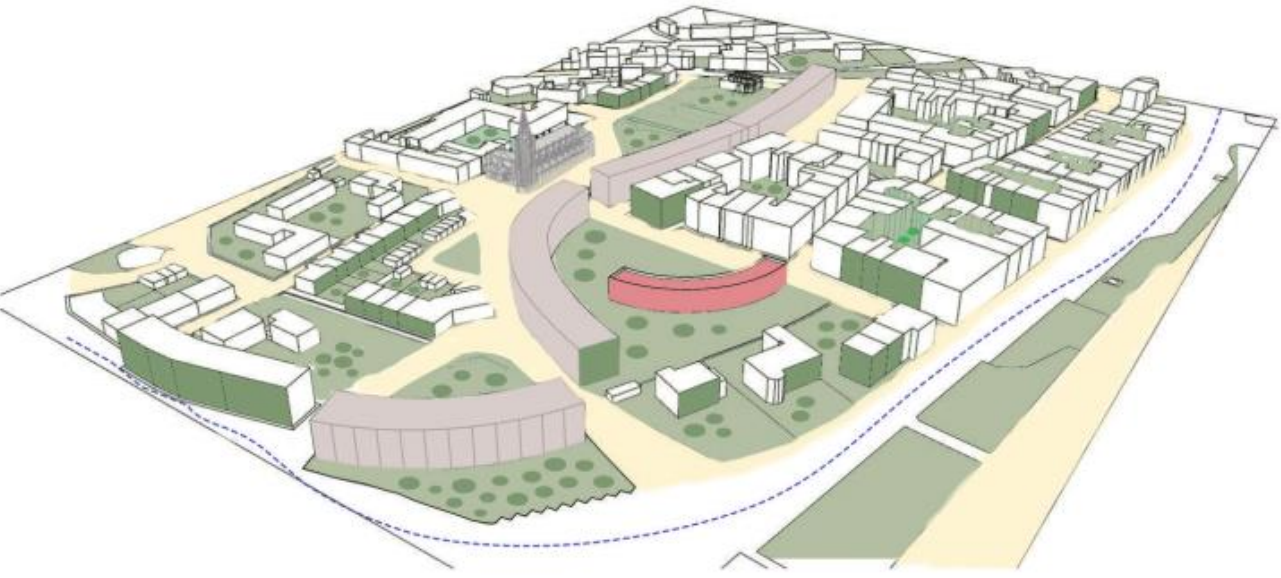


5. Energy efficiency and recovery in a Circular Hub building



6. Buildings a functional mix to face food and health challenges

A third of the inhabitants of Rives-en-Seine are elderly. 88% of these people live alone. these people should be helped to meet and help each other



Je suis seule avec un enfant. J'ai peu de temps pour moi. En venant ici je gagne un temps précieux.

Comme les autres soignants, mes rondes à Rives-en-Seine ont été facilitées par les habitats partagés. Grâce à cette nouvelle manière d'habiter, je me déplace moins, mes rondes sont plus concentrées par les habitats partagés. Cela a rendu mon travail plus agréable.

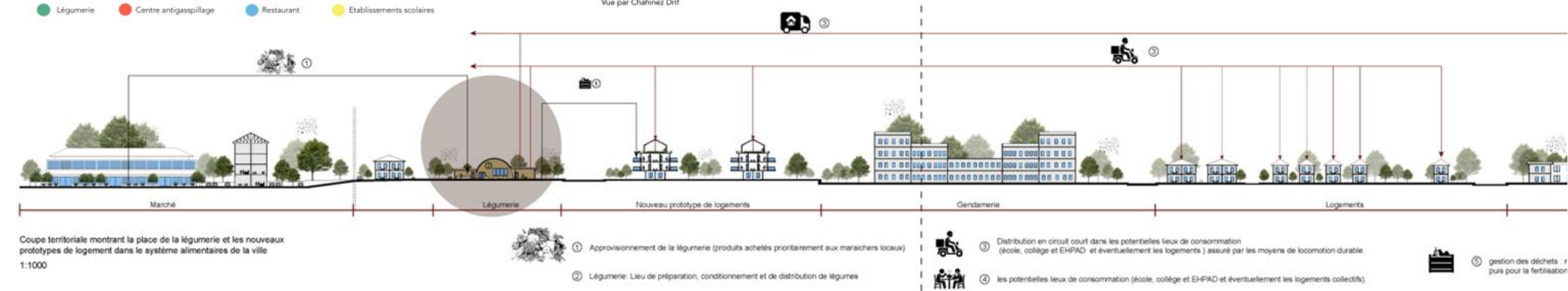
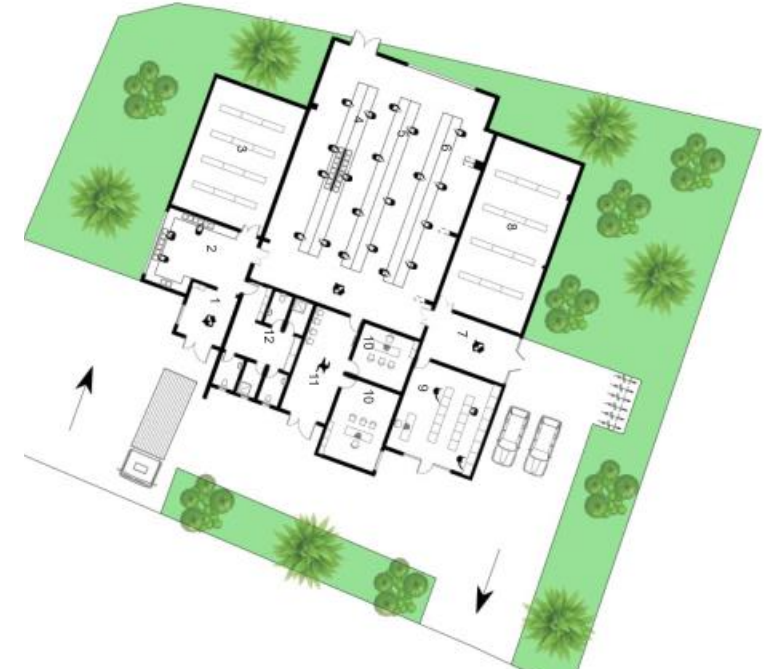
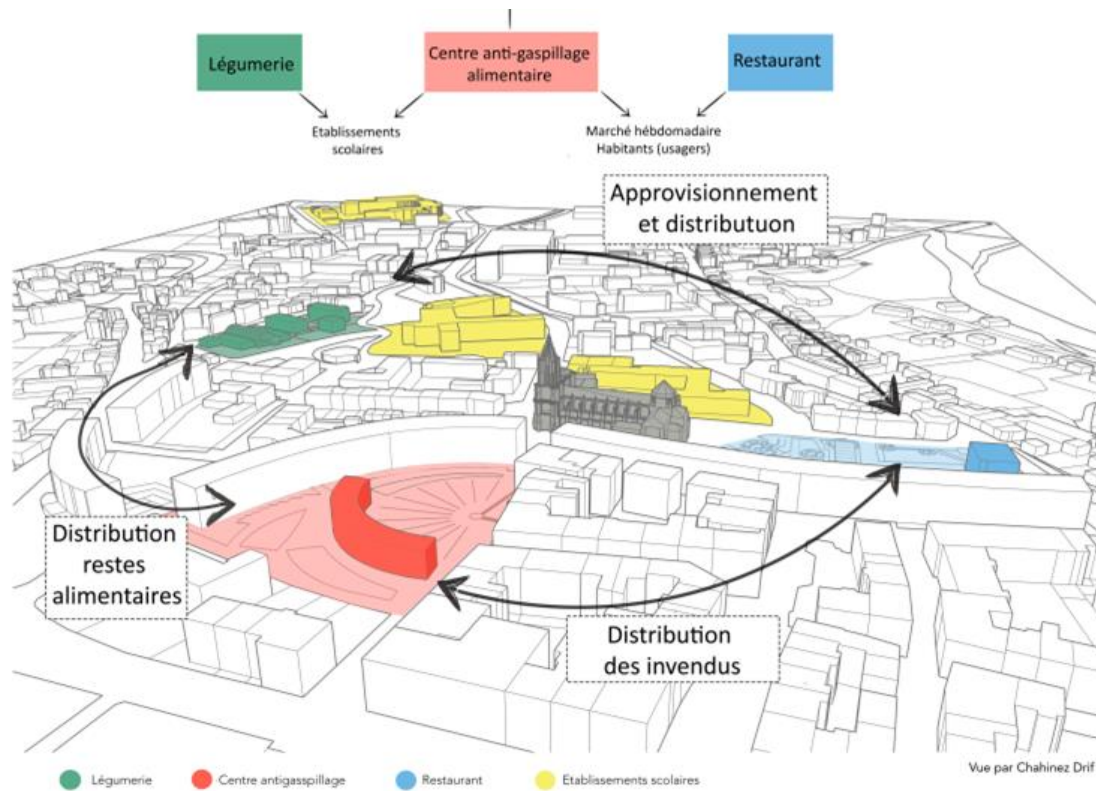
Je ne peux plus me déplacer depuis longtemps, mais grâce au centre de soins, je peux voir les spécialistes dont j'ai besoin.

Je viens ici une fois par semaine voir mes patients. Tout le matériel est déjà sur place. Ça me change de venir ici aider les habitants. Mon collègue podologue ne vient qu'une fois par mois. Chacun choisit à quelle fréquence il vient travailler ici.



3

7. Food waste recycling





The Originality of the approach

- A mixed approach based on cross-fertilization of mixed knowledge and scientific corpus.
- Considering the urban-peri-urban metabolism in the design and planning processes of cities



Thank you all !