



**HAL**  
open science

# Controls on the spatial distribution and temporal variations of PAH in the sediments of the Paris sewerage system.

Camille Asselin, Jérémy Jacob, Régis Moilleron, Sophie Ayrault, Stéphane Rican

## ► To cite this version:

Camille Asselin, Jérémy Jacob, Régis Moilleron, Sophie Ayrault, Stéphane Rican. Controls on the spatial distribution and temporal variations of PAH in the sediments of the Paris sewerage system.. IMOG 2023 - 31st International Meeting on Organic Geochemistry, Sep 2023, Montpellier, France. . hal-04213726

**HAL Id: hal-04213726**

**<https://hal.science/hal-04213726>**

Submitted on 21 Sep 2023

**HAL** is a multi-disciplinary open access archive for the deposit and dissemination of scientific research documents, whether they are published or not. The documents may come from teaching and research institutions in France or abroad, or from public or private research centers.

L'archive ouverte pluridisciplinaire **HAL**, est destinée au dépôt et à la diffusion de documents scientifiques de niveau recherche, publiés ou non, émanant des établissements d'enseignement et de recherche français ou étrangers, des laboratoires publics ou privés.

## Controls on the spatial distribution and temporal variations of PAH in the sediments of the Parisian sewerage system



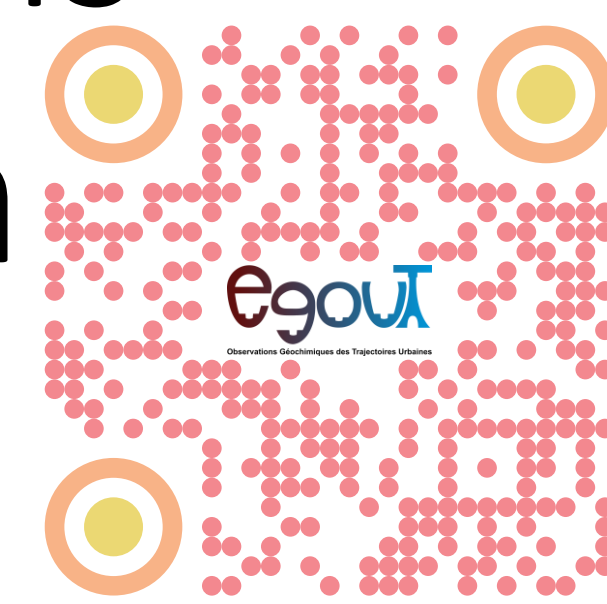
Camille Asselin<sup>1</sup>, Jérémy Jacob<sup>1</sup>, Régis Moilleron<sup>2</sup>, Sophie Ayrault<sup>1</sup>, Stéphane Rican<sup>3</sup>

<sup>1</sup> Laboratoire des Sciences du Climat et de l'Environnement (LSCE-IPSL), UMR 8212 (CEA/CNRS/UVSQ), Université Paris-Saclay, France

<sup>2</sup> LEESU, Ecole des Ponts, Université Paris Est Creteil, France

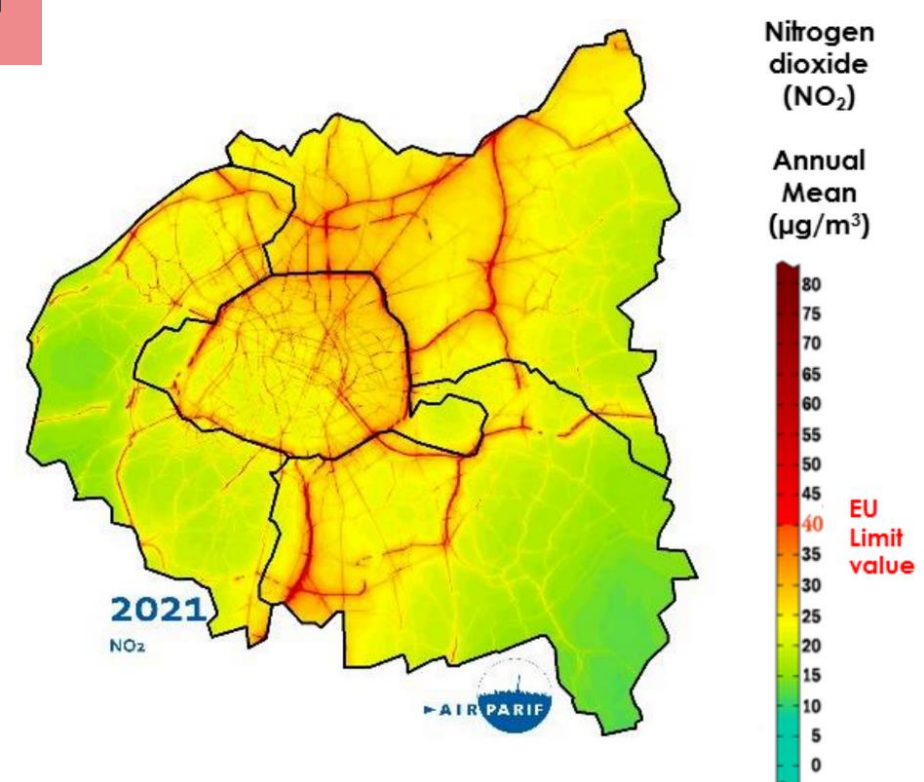
<sup>3</sup> Laboratoire Dynamiques sociales et recomposition des espaces (LADYSS), UMR 7533, Université Paris Nanterre, France

camille.asselin@lsce.ipsl.fr



### INTRODUCTION

- Heterogeneities of urban environments -> difference in exposure to pollution -> health issues



- City management through public policy: low emission zone
- EGOUT project: sediment and water in sewers provide information on surface dynamics (Jacob et al., 2020)

### Working hypothesis:

- The diversity and the changes of urban contexts are expressed in the spatio-temporal distribution of tracers archived in sewer sediments

### Questions:

- What determines the spatial and temporal distributions of PAH ?
- Can regulatory data be used for scientific purposes ?

### MATERIAL AND METHODS

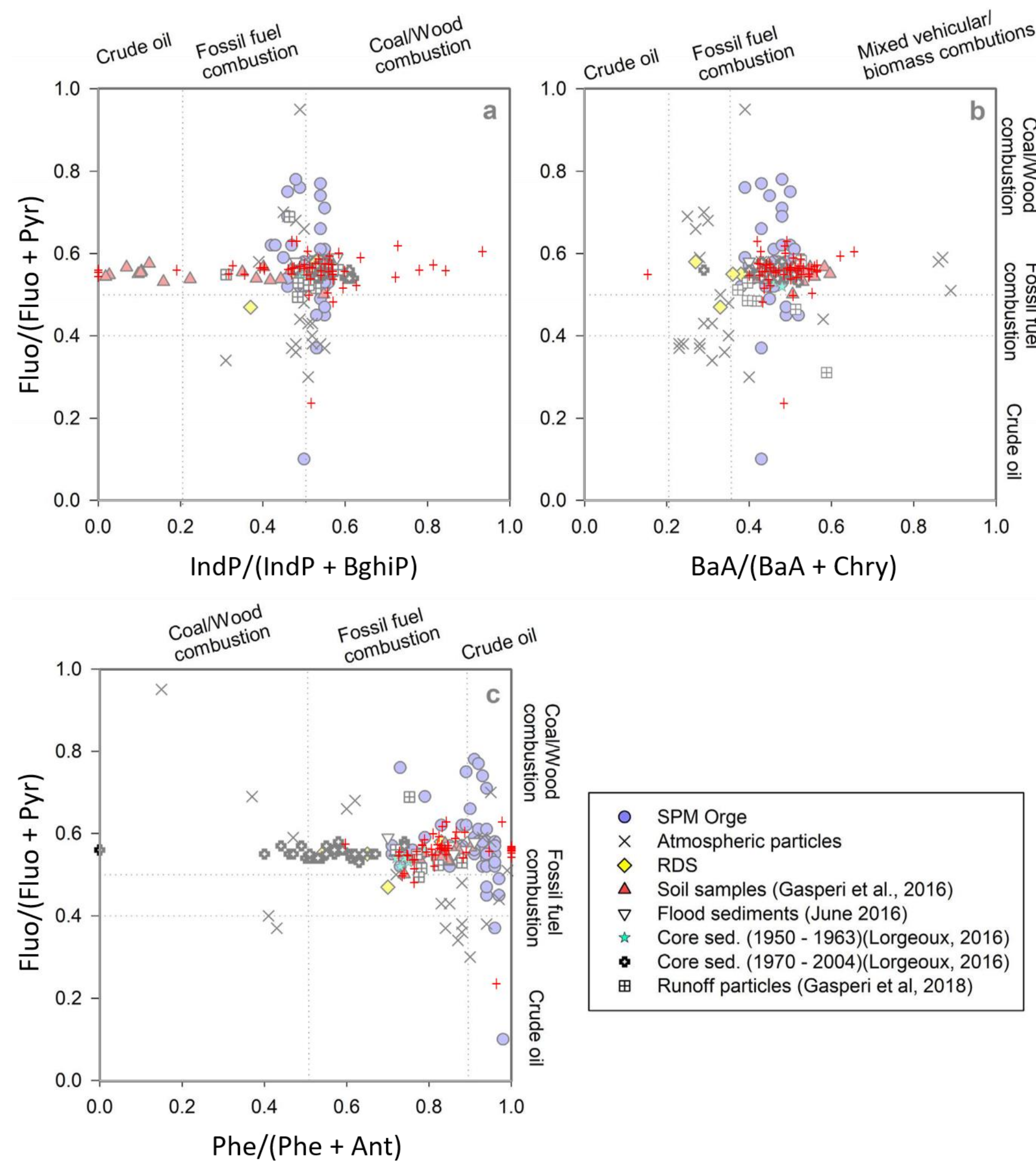
- Regulatory results on silt traps sediments -> available since 2000: grain size, organic matter, 16 PAH... (624 samples)
- GIS approach: sewershed (159)



A silt trap in sewers network

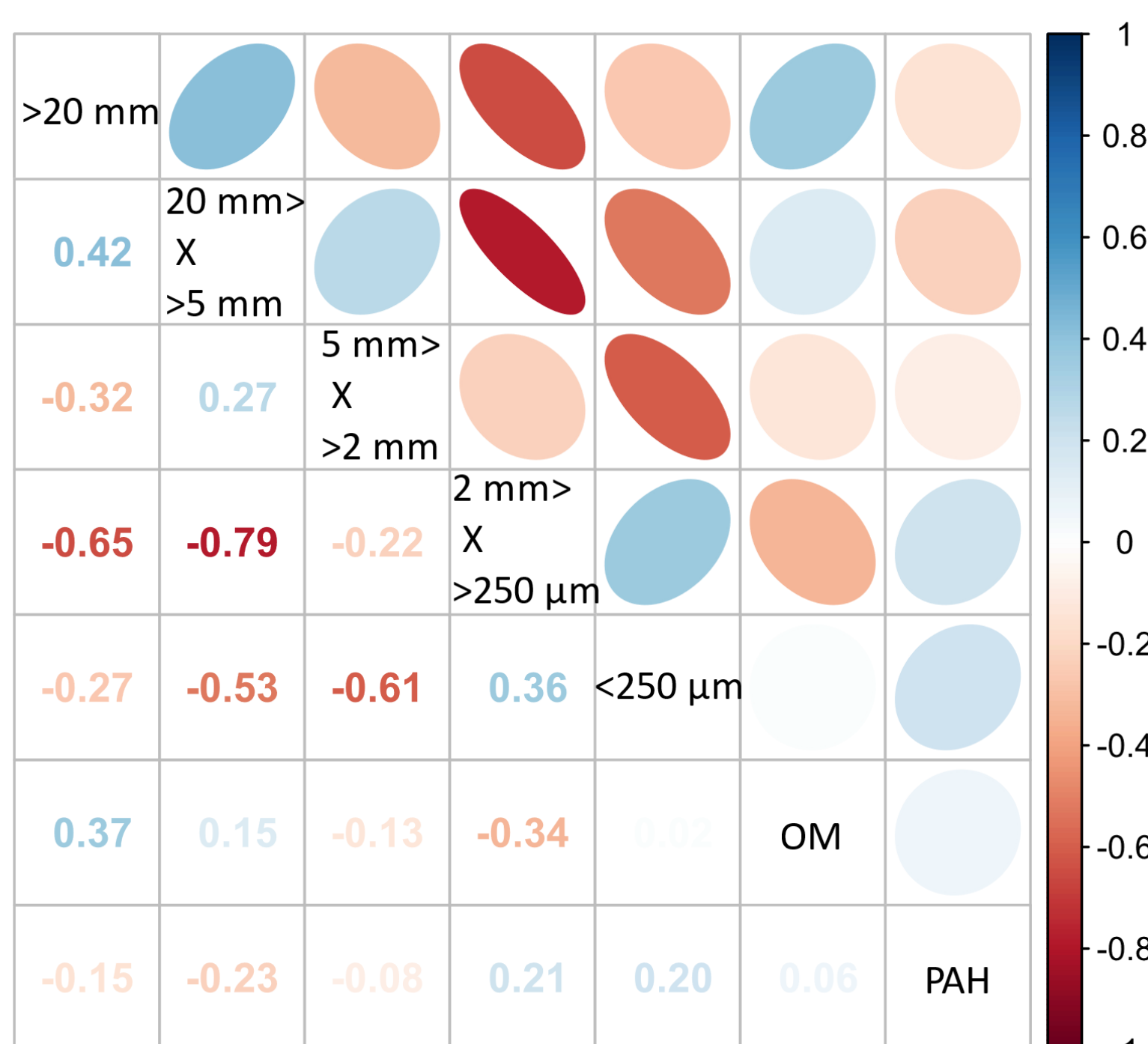
### RESULTS

#### Source of PAH:



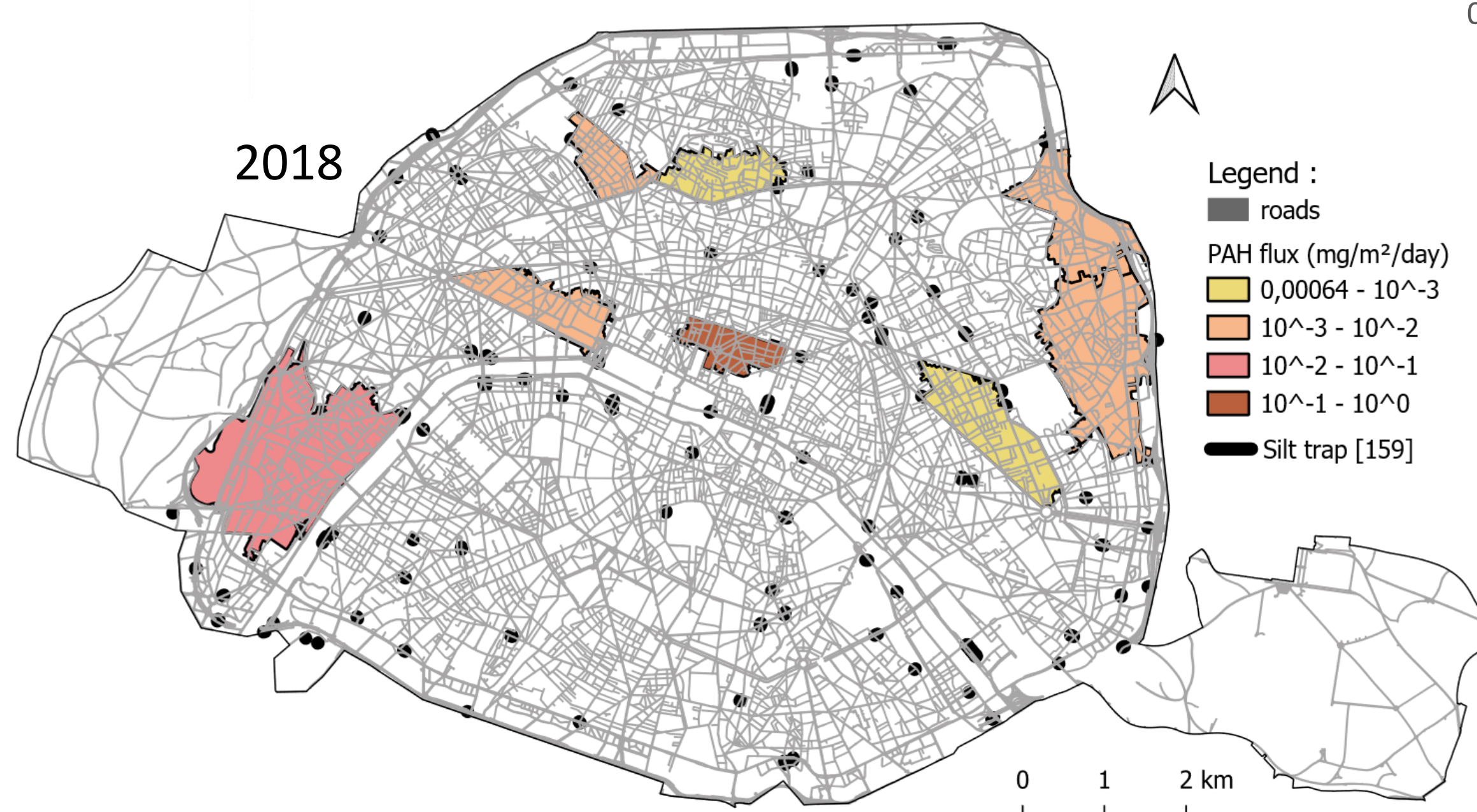
- Possible origins: coal/wood combustion, fossil fuel combustion or mixed vehicular/biomass combustions

#### Supporting phases (OM, minerals...):

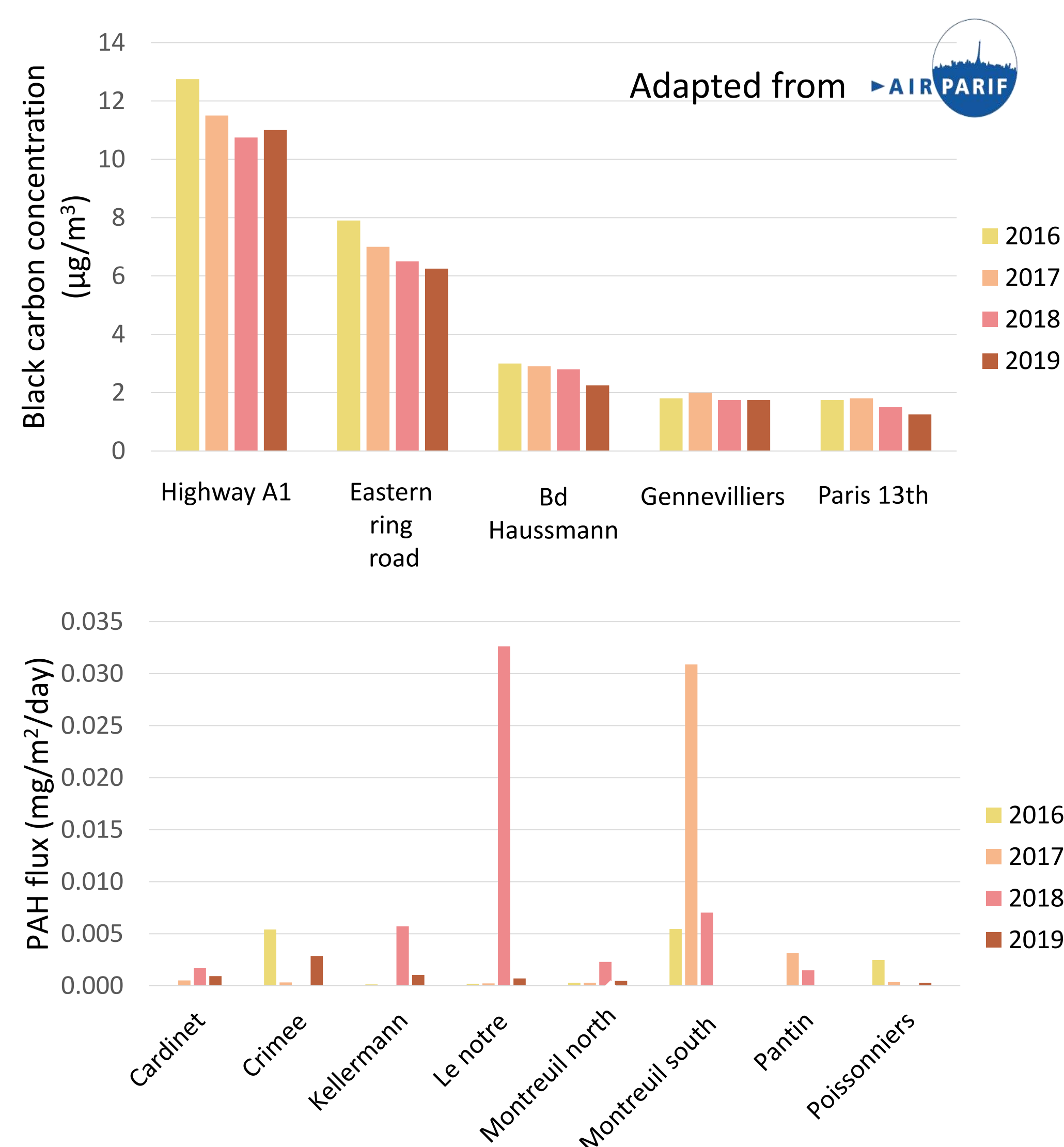


- PAH are not correlated

#### Spatial distribution:



#### Temporal evolution:



- Black carbon and PAH (same origin ?) -> not correlated
- Extreme values

- No link between traffic and PAH

### CONCLUSIONS AND PERSPECTIVES

- PAH measured in sewage originate from distinct origins
- PAH are not correlated with granulometric, or organic matter (different sources ?)
- The temporal evolution and spatial distribution of PAH are not explained by the distribution of roads or by household heating -> spatio-temporal representativeness issues

- Representativeness of sampling, changes of analytical protocols ?

22 new sediments core will be analyzed

Froger, C., Ayrault, S., Gasperi, J., Caupos, E., Monvoisin, G., Evrard, O., Quantin, C., 2019. Innovative combination of tracing methods to differentiate between legacy and contemporary PAH sources in the atmosphere-soil-river continuum in an urban catchment (Orge River, France). Science of The Total Environment 669, 448–458. <https://doi.org/10.1016/j.scitotenv.2019.03.150>  
 Jacob, J., Thibault, A., Simonneau, A., Sabatier, P., Le Milbeau, C., Gautret, P., Ardito, L., Morio, C., 2020. High-resolution sedimentary record of anthropogenic deposits accumulated in a sewer decantation tank. Anthropocene 30, 100238. <https://doi.org/10.1016/j.ancene.2020.100238>

