



**HAL**  
open science

# Intellectual Disability and Behavioral Deficits Linked to CYFIP1 Missense Variants Disrupting Actin Polymerization

Vittoria Mariano, Alexandros K Kanellopoulos, C Ricci, Daniele Di Marino,  
Sarah C Borrie, Sebastian Dupraz, Frank Bradke, Tilmann Achsel, Eric  
Legius, Sylvie Odent, et al.

## ► To cite this version:

Vittoria Mariano, Alexandros K Kanellopoulos, C Ricci, Daniele Di Marino, Sarah C Borrie, et al.. Intellectual Disability and Behavioral Deficits Linked to CYFIP1 Missense Variants Disrupting Actin Polymerization. *Biological Psychiatry*, 2024, 95 (2), pp.161-174. 10.1016/j.biopsych.2023.08.027 . hal-04212584

**HAL Id: hal-04212584**

**<https://hal.science/hal-04212584>**

Submitted on 22 Nov 2023

**HAL** is a multi-disciplinary open access archive for the deposit and dissemination of scientific research documents, whether they are published or not. The documents may come from teaching and research institutions in France or abroad, or from public or private research centers.

L'archive ouverte pluridisciplinaire **HAL**, est destinée au dépôt et à la diffusion de documents scientifiques de niveau recherche, publiés ou non, émanant des établissements d'enseignement et de recherche français ou étrangers, des laboratoires publics ou privés.



Distributed under a Creative Commons Attribution - NonCommercial 4.0 International License

1 **Intellectual Disability and Behavioral Deficits Linked to *CYFIP1* Missense Variants**

2 **Disrupting Actin Polymerization**

3

4 Vittoria Mariano<sup>1,2</sup>, Alexandros K. Kanellopoulos<sup>1</sup>, Carlotta Ricci<sup>3</sup>, Daniele Di Marino<sup>4</sup>, Sarah C.  
5 Borrie<sup>2</sup>, Sebastian Dupraz<sup>5</sup>, Frank Bradke<sup>5</sup>, Tilmann Achsel<sup>1</sup>, Eric Legius<sup>2</sup>, Sylvie Odent<sup>6,7</sup>, Pierre  
6 Billuart<sup>8</sup>, Thierry Bienvenu<sup>8</sup> and Claudia Bagni<sup>1,3</sup>

7

8 <sup>1</sup>Department of Fundamental Neurosciences, University of Lausanne, 1005 Lausanne,  
9 Switzerland.

10 <sup>2</sup>Department of Human Genetics, KU Leuven, 3000 Leuven, Belgium.

11 <sup>3</sup>Department of Biomedicine and Prevention, University of Rome Tor Vergata, 00133 Rome, Italy.

12 <sup>4</sup>Department of Life and Environmental Sciences, New York-Marche Structural Biology Center  
13 (NY-MaSBiC), Polytechnic University of Marche, 60131 Ancona, Italy.

14 <sup>5</sup>Axonal Growth and Regeneration Group, German Center for Neurodegenerative Diseases  
15 (DZNE), Venusberg-Campus 1, Building 99, 53127 Bonn, Germany.

16 <sup>6</sup>Service de Génétique Clinique, Centre Labellisé pour les Anomalies du Développement Ouest,  
17 Centre Hospitalier Universitaire de Rennes, 35203 Rennes, France.

18 <sup>7</sup>Institut de Génétique et Développement de Rennes, CNRS, UMR 6290, Université de Rennes,  
19 ERN ITHACA, France.

20 <sup>8</sup>Institut de Psychiatrie et de Neurosciences de Paris (IPNP), Institut National de la Santé et de la  
21 Recherche Médicale (INSERM) U1266, Université de Paris Cité (UPC), Paris 75014, France.

22

23 **\*Corresponding author:** Claudia Bagni, Ph.D.

24 Email: Claudia.Bagni@unil.ch; Claudia.Bagni@uniroma2.it;

25 Tel (1): +41-216925120; Tel (2): +39-0672596063

26

27 **Keywords:** *CYFIP1*, Autism Spectrum Disorder, Actin remodeling, *Drosophila*, Social deficits,  
28 Motor impairment.

29

30 **Short running title:** *CYFIP1* SNVs Affect Actin Polymerization and Behavior

31



1 **Abstract**

2 *Background:* 15q11.2 Deletions and duplications have been linked to autism spectrum disorder  
3 (ASD), schizophrenia, and intellectual disability (ID). Recent evidence suggests that dysfunctional  
4 *Cytoplasmic FMR1 Interacting Protein 1 (CYFIP1)* contributes to the clinical phenotypes observed  
5 in individuals with 15q11.2 deletion/duplication syndrome. *CYFIP1* plays crucial roles in neuronal  
6 development and brain connectivity, promoting actin polymerization and regulating local protein  
7 synthesis. However, the impact of single nucleotide variants in *CYFIP1* to neurodevelopmental  
8 disorders is limited.

9 *Methods:* Here, we report a family with two probands exhibiting ID, ASD, spastic tetraparesis, and  
10 brain morphology defects carrying biallelic missense point mutations in the *CYFIP1* gene. We  
11 used skin fibroblasts from one of the proband, parents, and typically developing individuals to  
12 investigate the effect of the variants on the functionality of *CYFIP1*. In addition, we generated  
13 *Drosophila* knock-in mutants to address the effect of the variants *in vivo* and gain insight into the  
14 molecular mechanism underlying the clinical phenotype.

15 *Results:* Our study revealed that the two missense variants are in protein domains responsible  
16 for maintaining the interaction within the wave regulatory complex (WRC). Molecular and cellular  
17 analyses in skin fibroblasts from one proband showed deficits in actin polymerization. The fly  
18 model for these mutations exhibited abnormal brain morphology and F-actin loss and  
19 recapitulated the core behavioral symptoms, such as deficits in social interaction and motor  
20 coordination.

21 *Conclusions:* Our findings suggest that the two *CYFIP1* variants contribute to the clinical  
22 phenotype observed in the proband that reflects deficits in actin-mediated brain development  
23 processes.

24

## 1 **Introduction**

2 The 15q11.2 (BP1-BP2) has emerged as a susceptibility locus for neuropsychiatric disorders,  
3 including intellectual disabilities and neurobehavioral disturbances (1-6). Copy number variants  
4 (CNV) in the 15q11.2 region have been identified in patients with autism spectrum disorders  
5 (ASD), schizophrenia (SCZ), neurodevelopmental delay, intellectual disability (ID) and epilepsy  
6 (1, 5, 7-17). Although, four genes are present within the human BP1-BP2 region (*TUBGCP5*,  
7 *CYFIP1*, *NIPA2*, and *NIPA1*), increasing evidence points to the relevance of *Cytoplasmic FMR1*  
8 *Interacting Protein 1* (*CYFIP1*). Due to its crucial role in synaptic development and functionality  
9 (18, 19), neuronal connectivity (19, 20), brain wiring (21, 22) and GABAergic signaling (23, 24),  
10 dysregulation of *CYFIP1* has been suggested to contribute to the clinical phenotype observed in  
11 patients with 15q11.2 variations. *CYFIP1* CNVs have been associated with ASDs, SCZ, epilepsy,  
12 and cognitive deficits (2, 8, 10, 11, 15, 17, 25-33). Single nucleotide variants (SNV) in coding  
13 regions affecting the protein sequence have been reported in ASD cases (34-36) and in an  
14 individual with congenital heart disease and learning disability (37). In addition, SNVs in the  
15 noncoding regions of the *CYFIP1* gene have been detected in large-scale whole genome  
16 sequencing (WGS) studies in cohorts affected by ASD (38-41). Finally, GWAS-ATLAS reveals  
17 *CYFIP1* association with neurological and metabolic disorders (42). However, the precise role of  
18 *CYFIP1* in those clinically relevant cases remains elusive.

19 *CYFIP1* plays a role in neurodevelopment by linking FMRP-dependent local protein synthesis  
20 with actin cytoskeleton remodeling through Rac1 small GTPase signaling (18, 43). When bound  
21 to Rac1, *CYFIP1* is part of the Wave Regulatory Complex (WRC), containing *WAVE1/2/3*, *ABI1/2*,  
22 *NCKAP1* and *HPSC300* (44-46), which regulates the actin nucleation activity of the Arp2/3  
23 complex. Under basal conditions, *CYFIP1* inhibits the Arp2/3 complex, while upon binding of  
24 Rac1-GTP, *CYFIP1* conformational change in the WRC allows activation of the Arp2/3 complex  
25 and actin polymerization (45-53). Fine-tuned actin cytoskeleton dynamics plays a crucial role in

1 neurodevelopmental processes such as dendritic spine morphology (54), axonal guidance and  
2 branching (55), and synapse functionality (56, 57).

3 This study aimed to understand how SNVs in *CYFIP1* could contribute to neurodevelopmental  
4 deficits. We report a family case with two probands carrying biallelic missense variants in the  
5 *CYFIP1* gene, one variant inherited from each parent. Individuals are affected by severe ID and  
6 ASD, together with epileptic encephalopathy, spastic tetraparesis, and microcephaly. Parents do  
7 not show the clinical phenotype reported for the probands. Using available skin fibroblasts from  
8 one of the probands, parents and typical developing individuals, and *Drosophila* CRISPR knock-  
9 in (KI) models for the two missense variants, we investigated the impact of these SNVs on the  
10 functionality of CYFIP1 and their contribution to the clinical phenotype of the proband.

11

1 **Methods and Materials**

2 **Ethics statements.** Human skin fibroblasts from Proband 1 and their parents were received from  
3 clinical collaborators and coauthors of this study. All procedures performed in this study were in  
4 accordance with the ethical standards of the French Institute Cochin research committee and with  
5 the Declaration of Helsinki of 1964 and its subsequent amendments. Written informed consent to  
6 the molecular diagnosis of genetic diseases was obtained from parents.

7

8 **Human fibroblast cell lines.** Fibroblasts from healthy volunteers (typically developing individuals  
9 (TDI) were obtained from: 1) purchased from Coriell Institute Cell Repositories (Camden, NJ); 2)  
10 UZ/KU Leuven Biobank (Dr. Hilde Van Esch, Belgium) and previously described (58, 59) (n = 4,  
11 age range 22-33 years and n = 3 age 42-57). Human fibroblasts from father (I-1), mother (I-2) and  
12 proband 1 (II-2) were obtained from the Institut Cochin, Université de Paris (France). See  
13 Supplemental Information for culture conditions.

14

15 **Live imaging and analysis of actin cytoskeleton remodeling.** Cells on glass bottom plates  
16 (MatTek) were transfected with CMV-Lifeact-EGFP (60) using Lipofectamine 2000 transfection  
17 reagent (Invitrogen, Thermo Fisher Scientific) in Opti-MEM (Gibco, Thermo Fisher Scientific).  
18 After 6 h, the medium was replaced and 24 h cells were imaged. Time-lapse imaging was  
19 performed for 2 min/cell, on a Nikon A1R Eclipse Ti for fast and high-resolution acquisition. Argon  
20 laser at 5% and 60x objective (UPlanSApo, NA 1.2, water immersion) were used. A chamber  
21 around the microscope kept the sample at a constant temperature of 37 °C, CO<sub>2</sub> level and  
22 humidity. Kymographs were generated from pixel-wide lines drawn orthogonally to the cell edge  
23 in regions where lamellar protrusions of fibroblasts were actively protruding, using FIJI (61).

1 **Fly stocks and genetics.** Flies were maintained on standard cornmeal fly food at 25 ° C, 60 %  
2 humidity, in a 12-h light/dark cycle. Wild type cantonized *w<sup>1118</sup>* (23, 62) flies were used as control.  
3 All transgenic lines tested were initially backcrossed into the *w<sup>1118</sup>* background. Because the two  
4 variants are present in a boy, male flies 5-7 days after eclosion were used for all experiments.  
5 Behavioral experiments were performed between ZT1-ZT4 (Zeitgeber Time). Detailed information  
6 on CRISPR/Cas9 generation of the *Drosophila* Cyfip-KI mutants, immunofluorescence,  
7 mushroom body morphometric measurement and behavioral experiments are provided in  
8 Supplemental Information.

9

10 **Statistics.** Analyses were performed using GraphPad Prism software (v.9). The Shapiro-Wilk test  
11 for normal distribution of the data was used. Statistical tests are listed in the respective figure  
12 legends. *p*-values < 0.05 were considered significant. The results are represented as mean ±  
13 standard error of the mean (S.E.M.).

14

15 See Supplemental Information for description of the following methods: exome sequencing,  
16 description and in silico analysis of the sequence variants, variant validation, structural variant  
17 modeling, RNA isolation and qPCR, western blotting, surface sensing of translation (SUnSET)  
18 assay, immunofluorescence, and immunoprecipitation of the CYFIP1 complex.

19

## 1 **Results**

### 2 **Exome sequencing and genetic analyses reveal potentially pathogenic missense variants** 3 **in *CYFIP1***

4 We identified a non-consanguineous family with two individuals (II-2 and II-3) affected by a severe  
5 neurodevelopmental disorder (Figure 1A). Both individuals show developmental delay,  
6 microcephaly (with head circumference (HC) below 2 standard deviations), inability to walk  
7 without assistance, and absence of speech, consistent with a severe form of intellectual disability  
8 (ID). ID was classified in both probands as severe or profound (according to DSM-5 criteria (63)).  
9 The two probands exhibit autistic symptoms characterized by a “pseudo-Angelman” phenotype  
10 (paroxysmal laughter and happy demeanor) and severe motor deficits. Proband 1 shows  
11 hyperactivity and repetitive self-mutilating behavior (head-banging). Frequent generalized non-  
12 motor seizures with onset between 3-6 years of age have been detected in both probands. Brain  
13 FLAIR magnetic resonance imaging reported white matter hyperintensities in the thalamus with  
14 moderate ventriculomegaly in proband 1. Table 1 reports a detailed summary of the clinical  
15 characteristics of the two probands. Clinical evaluations report that neither of the parents (I-1 and  
16 I-2) has clinical phenotypes. The family also has one unaffected sibling (II-1).

17 We performed Whole Exome Sequencing (WES) analysis on proband 1 (II-2) and his parents (I-  
18 1 and I-2). In total 26'060 to 26'216 single nucleotide polymorphisms (SNPs) and 902 to 906 small  
19 deletions/insertions (1-10 bp) were identified across the exomes of this family. After testing for *de*  
20 *novo*, recessive and X-linked inheritance and filtering the variants for moderate/high pathogenicity  
21 score impact (PolyPhen-2, SIFT, CADD and REVEL scores), we identified 14 potential pathogenic  
22 genetic variants (Table 2). Pathogenic variants that were not detected in both probands and that  
23 were not involved in syndromic disorders that could explain the clinical phenotype were excluded.  
24 We narrowed the list down to two biallelic variants in the *Cytoplasmic FMRP interacting protein 1*  
25 (*CYFIP1*) gene, potentially involved in the neurodevelopmental disorder of the probands. The

1 variant p.(Ile476Val), inherited from the father (15/152142 alleles in gnomAD v.3.0) was reported  
2 tolerated, disease-causing, and “possibly damaging” by the pathogenicity prediction tools. The  
3 variant p.(Pro742Leu), inherited from the mother (6/152210 alleles) was predicted to be tolerated  
4 and benign by *in silico* analysis. Both missense variants were also detected in the second proband  
5 and were confirmed by direct Sanger sequencing. Genetic analysis showed that the probands  
6 were compound heterozygotes, while the parents and the sibling are heterozygotes for a single  
7 variant (Figure 1A-B). Considering these findings and the prominent roles of *CYFIP1* in  
8 neurodevelopment, we focused our attention on understanding the role of the two *CYFIP1* SNVs.

9 We utilized the available crystal structure of the human WRC (45, 64) to map the two *CYFIP1*  
10 variants (Figure 1C-D). The p.(Ile476Val) variant is situated in the globular N-domain, in proximity  
11 to the RAC1 binding site A (Figure 1C)(45). The isoleucine residue is embedded within a complex  
12 set of secondary structural elements, specifically  $\alpha$ -helices (Figure 1D, lower insets). Our  
13 hypothesis suggests that the substitution of valine for isoleucine at position 476 could potentially  
14 destabilize the structure of *CYFIP1*, due to the smaller size and lower hydrophobicity of valine  
15 compared to isoleucine, resulting in a decrease in hydrophobicity. This would lead to a subtle  
16 disruption in the contacts between the two secondary structural elements of the proteins and  
17 hinder interaction with the amino acids Leu605 and Phe608 (Figure 1D, lower insets). This is  
18 further supported by the protein stability analysis, which estimates a  $\Delta\Delta G$  value of  $+ 1.28 \pm 0.036$   
19 kcal/mol for the Ile476Val variant.

20 The p.(Pro742Leu) variant is located in the central domain, that confers structural flexibility to  
21 *CYFIP1* (Figure 1C), and contributes to the binding with the translation factor eIF4E and to the  
22 interactions with WAVE1 and NCKAP1 in the WRC (45, 47, 48, 51, 64-66). A butterfly-like motion  
23 has been associated with the ability of *CYFIP1* to switch from the WAVE complex towards the  
24 eIF4E complex (43, 65), suggesting that the decrease in flexibility associated with the Pro742Leu  
25 mutation could affect this switching ability (Figure 1D, upper insets). This is consistent with the

1 protein stability analysis, which revealed that this variation has a slightly destabilizing effect on  
2 the 3D structure of CYFIP1 with a  $\Delta\Delta G$  value of  $+ 0.72 \pm 0.023$  kcal/mol (Figure 1D, upper insets).  
3 Importantly, both variants affect amino acid regions that are highly conserved between taxa, from  
4 humans to fruit flies (Figure 1E), underlying the relevance of these domains.

5

## 6 **Bi-allelic *CYFIP1* variants underlie a complex disorder affecting actin remodeling**

7 To determine the effect of the missense variants in *CYFIP1* at the functional level, we used the  
8 available skin fibroblasts from proband 1, the two parents and age-matched typical developing  
9 individuals (TDI). No defective levels of *CYFIP1* mRNA (Figure 2A) and protein levels (Figure 2B)  
10 were observed in proband 1, neither differences in expression for the other genes deleted in the  
11 BP1-BP2 deletion syndrome (*NIPA1*, *NIPA2*, and *TUBGCP5*), nor the Angelman syndrome-  
12 associated gene *UBE3A* (Figure S1A).

13 *CYFIP1* coordinates cytoskeletal actin remodeling through interactions with the WRC (18, 20, 67)  
14 and protein synthesis through interactions with FMRP and eIF4E (18, 19, 33, 43, 68). Impairments  
15 in these molecular mechanisms are notably implicated in ASD pathogenesis (34, 68-74). We  
16 performed surface sensing of translation (SUnSET) (75) to measure relative protein synthesis  
17 rates in human fibroblasts (58). No differences in puromycin incorporation were observed  
18 between fibroblasts from the proband and/or parents and TDI individuals, suggesting that these  
19 variants do not affect overall protein synthesis levels (Figure S1B). In contrast, using phalloidin-  
20 TRITC immunofluorescence to detect filamentous (F) actin (Figure 3A), we found that fibroblasts  
21 from the proband 1 displayed a reduction in phalloidin intensity and therefore, F-actin levels  
22 (Figure 3B). In addition, an increase in the aspect ratio (AR: major axis/minor axis, Figure 3C) in  
23 the proband fibroblasts, indicated a subtle and yet significant change in cell morphology from a  
24 typical spindle-like to a more stellate-shaped cell phenotype (Figure 3D).



1 F-actin remodeling is crucial for lamellar protrusion and cell motility (76). We performed live  
2 imaging of actin lamellar protrusion dynamics in TDI and proband 1 fibroblasts after transfection  
3 with Lifeact-GFP (60) to allow visualization of F-actin dynamics (77). Kymograph analysis of the  
4 lamellar protrusions (Figure 3E) revealed a significant reduction in protrusion length, number, and  
5 velocity (Figure 3F-H) in proband 1 cells, confirming the actin polymerization defects observed in  
6 the presence of bi-allelic *CYFIP1* variants. Next, we investigated whether the two missense  
7 variants affect the interaction of CYFIP1 within the WRC. We coprecipitated the CYFIP1-WRC  
8 complex from TDI (Figure 3I-K, lane 1-3) and proband 1 (Figure 3I, lane 4-6) fibroblasts and  
9 assessed the levels of CYFIP1 interactors with known involvement in Arp2/3 activation and actin  
10 remodeling (44, 49, 50, 64, 78, 79). Notably, a significant reduction of CYFIP1 interaction with  
11 NCKAP1 and WAVE1 in the proband 1 compared to TDI fibroblasts was observed (Figure 3I-K).  
12 Collectively, these results suggest that the biallelic missense variants in the cells of proband 1  
13 possibly impair the WRC functionality in actin polymerization due to the reduced CYFIP1 stability  
14 inside the complex leading to the deficits in cytoskeleton actin dynamics.

15

### 16 ***CYFIP* SNVs recapitulate human deficits in actin polymerization in *Drosophila***

17 We utilized the model organism *Drosophila melanogaster* to investigate the effects of bi-allelic  
18 *CYFIP1* missense variants on ID/ASD pathologies. Notably, *Drosophila* has been extensively  
19 used to model specific aspects of human pathologies (80-82). The *Drosophila* genome contains  
20 a single homolog (*Cyfp*) (83) of the two vertebrate genes, *CYFIP1* and *CYFIP2*, with high  
21 homology (DIOPT score 15/18, 65% amino acid identity and 80% similarity). Alignment of the  
22 human *CYFIP1* and the *Drosophila* *Cyfp* protein sequences revealed that the SNVs-containing  
23 regions are conserved in the two organisms (Figure 4A), therefore, using the *scarless* CRISPR-  
24 Cas9 gene-editing approach (Figure 4B), we generated knock-in (KI) fly lines for the human

1 missense variants, the p.(Ile476Val), p.(Ile471Val) in the fly genome and the p.(Pro742Leu)  
2 variant, p.(Pro760Leu) in the fly genome.

3 While the *Cytip* homozygous null mutants are lethal at the pupa stage (83). The homozygous KI  
4 animals (*Cytip*<sup>I471V</sup>/*Cytip*<sup>I471V</sup> and *Cytip*<sup>P760L</sup>/*Cytip*<sup>P760L</sup>) and the compound heterozygous genotype  
5 (*Cytip*<sup>I471V</sup>/*Cytip*<sup>P760L</sup>) were viable, fertile, and did not display visible morphological phenotypes. No  
6 differences in *Cytip* mRNA levels were detected in mutant flies (Figure S2A), consistent with the  
7 previous observation in human skin fibroblasts (Figure 2A). Therefore, we asked if the actin  
8 polymerization deficits observed upon the presence of the two variants were recapitulated within  
9 the KI fly model system. We performed biochemical fractionation to measure the F- and globular  
10 (G) actin amounts in the control and *Cytip* mutant heads. F-actin appeared to be significantly  
11 reduced compared to G-actin in *Cytip*<sup>I471V</sup>/*Cytip*<sup>P760L</sup> flies in comparison to control and parental  
12 lines, as shown by the reduced F-/G- actin ratio (Figure 4C). These results show that flies carrying  
13 both *Cytip* variants, exhibit actin cytoskeleton deficits, like the molecular phenotypes observed in  
14 the human cells.

15

### 16 **CYFIP SNVs affect neuronal morphology in *Drosophila***

17 CYFIP1 has been shown to regulate dendrite morphogenesis and axonal growth, pathfinding, and  
18 branching (67, 84). To determine whether the missense *CYFIP1* variants affect neuronal  
19 morphology in the fly model, we analyzed the structure of a well-characterized subset of neurons  
20 called small lateral ventral neurons (s-LNVs). Their stereotyped axonal projection pattern (Figure  
21 4D-E) allows studies of axonal arborization phenotypes (85, 86). Changes in s-LNVs axonal 3D  
22 arborization were analyzed in *Cytip* mutant flies and control flies (Figure 4D-F), as previously  
23 described (87). 3D spread analysis of the dorsal s-LNVs termini (Figure 4G) showed a decreased  
24 in the spread of the arborizations in flies carrying the two missense variants, compared to control

1 flies and to flies heterozygous for the single missense variant. In addition, the axonal volume  
2 occupied by the dorsal axonal projections was reduced in the *Cytip*<sup>I471V/P760L</sup> and *Cytip*<sup>P760L/+</sup>  
3 mutants compared to the control flies (Figure 4H), indicating a morphological deficit. To further  
4 investigate the brain morphology in the different *Cytip-KI* mutant flies, we conducted morphology  
5 analyses of the mushroom bodies (MB) and the ellipsoid body (EB), high brain structures involved  
6 in behaviors, from learning and memory, to social behavior and motor skills (88, 89) (Figure S2B-  
7 C). No gross morphological defects were observed in mutant flies, however, a detailed  
8 morphometric analysis (89) of the different structures revealed consistent subtle differences in  
9 neuroanatomical organization. We quantified the widths and lengths of  $\alpha$ - and  $\beta$ -lobes and surface  
10 areas of the ellipsoid body (Figure S2D-F), uncovering significant differences in  $\alpha$ - and  $\beta$ -lobe  
11 lengths between control and *Cytip*<sup>I471V</sup>/*Cytip*<sup>P760L</sup> flies (Figure S2D). In addition, the  $\alpha$ -lobe length  
12 in heterozygous flies for the single and the double variants was significantly increased, while the  
13  $\beta$ -lobe length was increased in *Cytip*<sup>I471V</sup>/*Cytip*<sup>P760L</sup> and in *Cytip*<sup>P760L/+</sup> flies (Figure S2D). No  
14 changes in the  $\alpha$ - and  $\beta$ -lobes width was observed (Figure S2E). Finally, an increase in the  
15 ellipsoid surface relative to the control was observed in heterozygous flies for the two single  
16 variants and in biallelic variant flies (Figure S2F). In summary, we showed that biallelic *Cytip*  
17 missense variants in flies induces axonal lobe extension defects, suggesting that the biallelic  
18 presence of the *CYFIP1* variants negatively impacts the neuronal and brain morphology in flies.

19

## 20 ***CYFIP* SNVs showed ASD-like behaviors in *Drosophila***

21 *CYFIP1* heterozygosity in animal models induced cognitive impairments (15), ASD- and SCZ-like  
22 behaviors (22, 62, 90) including social and motor deficits (21-23, 90, 91).

23 Male flies were tested for competition for food (aggression paradigm), a well-established social  
24 behavior assay (23) (Figure 5A). *Cytip*<sup>I471V/+</sup>, *Cytip*<sup>P760L/+</sup> and *Cytip*<sup>I471V</sup>/*Cytip*<sup>P760L</sup> flies showed

1 fewer social events than controls, indicating that the *Cytip* variants contribute to the aggression  
2 phenotype and their combination exacerbate this phenotype (Figure 5B and Video S1). Second,  
3 we assessed fly social group behavior using the Social Space Arena paradigm (Figure 5C).  
4 Analyzing the overall social space distribution between each fly, we observed that most control  
5 flies (> 40%) spend time at a close distance (< 0.5 cm). In contrast, *Cytip-KI* mutants exhibit a  
6 different distribution in the arena (Figure 5D). Notably, *Cytip*<sup>I471V</sup>/*Cytip*<sup>P760L</sup>, *Cytip*<sup>I471V/+</sup> and  
7 *Cytip*<sup>P760L/+</sup> flies distribute in the arena at farther distance from each other compared to control  
8 flies. In addition, the social preference index as in (92, 93) revealed a decreased index for the  
9 *Cytip* variants (Figure 5E). Overall, our analyses suggest that the *Cytip* missense variants give  
10 susceptibility to social interaction defects strengthening the role of CYFIP in regulating social  
11 interactions (23).

12 Additionally, we assessed motor skills in the flies carrying the missense variants. We evaluated  
13 motor reflex as the ability to climb after sudden stimuli (namely, negative geotaxis behavior)  
14 (Figure 5F) (94). The number of flies above a 6 cm distance 9 seconds after the startle input was  
15 recorded (Figure 5G). The number of *Cytip*<sup>I471V</sup>/*Cytip*<sup>P760L</sup> flies above the target line compared to  
16 control and flies with the missense variant in heterozygosity was significantly reduced. No  
17 difference was observed between controls and *Cytip*<sup>I471V/+</sup> and *Cytip*<sup>P760L/+</sup> (Figure 5G and Video  
18 S2). The reduced climbing behavior of *Cytip*<sup>I471V</sup>/*Cytip*<sup>P760L</sup> flies might be related to deficits in motor  
19 reflexes or reflect a general locomotion deficit. To tease these apart, we assessed the total  
20 locomotion (activity paradigm) (Figure 5H-I). Activity analysis revealed a reduced number of total  
21 beam crossings in the bi-allelic mutants *Cytip*<sup>I471V</sup>/*Cytip*<sup>P760L</sup> compared to control, to *Cytip*<sup>I471V/+</sup> and  
22 *Cytip*<sup>P760L/+</sup> flies, reflecting reduction in locomotion in the presence of both missense variants  
23 (Figure 5I). These results confirm that the bi-allelic presence of the missense variants induces  
24 motor deficits, including motor reflex deficits and hypo-activity in *Drosophila*.

25

## 1 **Discussion**

2 Previous reports have identified SNVs in *CYFIP1* in individuals with neurodevelopmental  
3 disorders (NDD) or affected by ASD and learning disabilities (34-41), with no clinical evaluation  
4 or investigation of the pathogenicity. Here, we report a complete clinical, molecular, and functional  
5 characterization of two rare biallelic missense variants in the *CYFIP1* gene, predicted to be  
6 deleterious and pathogenic. The two probands are affected by severe ID, motor deficits, repetitive  
7 behavior, and social deficits. Notably, alterations in pathways regulated by CYFIP1 lead to cellular  
8 (*i.e.*, spine structure and neurotransmission) and molecular (*i.e.*, actin dynamics and protein  
9 synthesis) (18, 19, 23, 24, 33, 43, 68, 91, 95) defects possibly contributing to the severe  
10 phenotype. *CYFIP1* haploinsufficiency in animal models revealed deficits in brain connectivity  
11 abnormalities and ASD/SCZ- like behavioral phenotypes, *i.e.*, social interaction, repetitive  
12 behaviors, learning, and sensory-motor processing (15, 21-23, 90).

13 The two variants cluster with domains relevant for the CYFIP1 function. In *silico* structural  
14 modeling analysis revealed that the amino acid substitutions could impair the flexibility, the  
15 motions of the secondary structure, and the network of hydrophobic interactions, possibly  
16 affecting binding to eIF4E or to WRC (45, 47, 48, 51, 65, 96). Protein synthesis was not affected  
17 by the presence of the missense variants, while a general reduction of actin cytoskeleton  
18 dynamics and polymerization was observed. These findings are supported by the protein stability  
19 analysis and immunoprecipitation experiments, indicating that the identified SNVs destabilize the  
20 CYFIP1 structure inside the WRC, with the Pro742Leu and Ile476Val mutations acting inter- and  
21 intra-molecularly, respectively, and impairing the interaction between CYFIP1 and its binding  
22 partners, NCKAP1 and WAVE1. This disruption is likely to lead to WRC function defects that  
23 might explain the observed phenotypes in the actin cytoskeleton and lamellar behavior in Proband  
24 1 fibroblasts. Notably, NCKAP1 and WAVE family protein, including WAVE1, are known to  
25 regulate the activity of Arp2/3 complex-mediated actin assembly (45, 50, 52, 64, 97-100),

1 necessary to promote cell shape, motility, and functionality. In line with our findings, F-actin  
2 polymerization is reduced upon disruption of the CYFIP1-NCKAP1 interaction in dendritic spines  
3 (18) and actin remodeling, migration and lamellipodia formation are impaired after NCKAP1  
4 abrogation (49, 101). In addition, lamellipodia protrusion length deficits, reduced F-actin at leading  
5 edges and deficits in dorsal ruffles formation and actin elongation have been observed upon  
6 WAVE1 deletion (97, 102-104).

7 Dysregulation in actin polymerization causes neuronal and glial developmental abnormalities  
8 (105), leading to ASD and neurological disorder, including seizures (106-109). Fine-tuned  
9 cytoskeleton function regulates proper spine morphology, with spine abnormalities likely to confer  
10 susceptibility to epilepsy due to disruptions to the excitatory/inhibitory (E/I) balance of neuronal  
11 circuitries (110). E/I balance and GABAergic signaling dysregulations have been described in  
12 animal models for *CYFIP1* haploinsufficiency, from flies to mice (23, 24). Interestingly, epileptic  
13 encephalopathy, and intellectual disability have also been reported in patients with missense  
14 variants in the *CYFIP1*-homologous gene, *CYFIP2* (106, 111, 112). *Drosophila* *Cyfp* null mutant  
15 exhibit impaired axonal growth, guidance, and branching (20, 83). *CYFIP1* deficiency has been  
16 shown to reduce axonal growth (84) and to regulate axonal outgrowth (67). We observed that the  
17 *CYFIP1* variants affect mushroom bodies and ellipsoid body morphology and s-LNVs neurons  
18 axonal branching in *Drosophila*. Interestingly, *Rho*, *Cdc42* and *Rac1* over-expression in these  
19 neurons in *Drosophila* induces axonal branch overgrowth (87), a phenotype opposite than the  
20 one observed in the *Cyfp-KI* bi-allelic mutants. We speculate that the reduced axonal projection  
21 and volume that we observed in flies harboring the bi-allelic missense variants might be related  
22 to deficits in actin polymerization. However, other mechanisms – such as guidance cues, neuronal  
23 activity, and neurotransmitter release (55, 113, 114), not depending on actin remodeling - might  
24 be involved in the observed cellular phenotype.

1 Social and motor coordination deficits are hallmarks of ASD and NDDs (115) and reported within  
2 the 15q11.2 deletion (7, 13). These phenotypes have also been described in animal models for  
3 *CYFIP1* haploinsufficiency with brain connectivity abnormalities and motor coordination deficits  
4 (21-23, 90). The observed behavioral deficits in social interaction and motor skills in flies harboring  
5 the *CYFIP1* missense variants, suggest that the combination of both Cyfip I471V and Cyfip P760L  
6 contribute to the clinical phenotypes of the two probands. Furthermore, in the social domains,  
7 social deficits have also been observed in the presence of single missense variants in  
8 heterozygosity. Although mutants carrying the single or both missense mutations show a similar  
9 pattern for certain cellular and behavioral phenotypes, the variability in the data make us cautious  
10 to conclude on the specific contribution of each variant while the presence of both variants result  
11 in a clear more severe phenotype. Consistently, it was shown that the combination of rare and  
12 recessive biallelic mutations contribute to the pathogenicity of NDDs and ASD (116-120).

13 In conclusion, we reported a rare case of biallelic missense variants in the *CYFIP1* gene in two  
14 individuals with NDD. Using the fly model, we investigated their impact in the absence of the  
15 confounding effects of genetic background gaining insights on the pathogenicity underlying the  
16 relevance of *CYFIP1* in NDDs. Variants in the *CYFIP1* gene can represent susceptibility factors  
17 for variable cognitive, neurological, and psychiatric disorders and may result in severe NDDs such  
18 as those observed in the probands. Future work on KI mouse models and brain organoids will  
19 complement our study to further clarify the functional consequences of *CYFIP1* variants in  
20 mammalian brain development.

1 **Acknowledgments:** We thank the probands and the family for participating in this study. We  
2 thank Nicolas Lebrun for technical assistance, Patrick Nitschké and members of the Cochin  
3 Hospital Cell Bank and Bioinformatics platforms (Institut Imagine) for technical and bioinformatics  
4 assistance. The co-author Dr. Sylvie Odent is a member of the European Reference Network on  
5 Rare Congenital Malformations and Rare Intellectual Disability ERN-ITHACA. We thank Dr. Hilde  
6 Van Esch (UZ Leuven, Belgium) and UZ Biobank (Belgium) for generously providing one of the  
7 TDI fibroblast cell line. We thank the Developmental Hybridoma Studies Bank for antibodies,  
8 FlyCRISPR and Flybase for informations, Prof. Brian McCabe (EPFL) for sharing reagents,  
9 grateful to Arianna Ravera (DCSR, University of Lausanne) for the 3D reconstruction of the sLNv  
10 axonal projections. We thank the Bagni laboratory for inputs and discussion on this work and A.  
11 Crevoisier and J. Viguié for excellent administrative and technical support, Nuria Dominguez-  
12 Iturza for confocal imaging assistance, Giulia Cencelli for sharing samples, Adrian Lo for support  
13 with the custom R scripts and Marie Fagotto Kaufmann for helping with some of the initial  
14 experiments. We acknowledge Dr. Kris Dickson for comments and initial editing the the  
15 manuscript. C.B. was supported by Etat de Vaud, SNFS 310030-182651, NCCR Synapsy  
16 51NF40-158776, Novartis Foundation for medical-biological research (Switzerland), ERANET-  
17 NEURON Joint Transnational Research Projects on Sensory Disorders 2020-088, PRIN  
18 201789LFBK MIUR and Telethon GGP20137 (Italy), KULeuven Opening the Future, UCB Award,  
19 Queen Elizabeth Foundation (Belgium). VM is a recipient of Women in Science (WIS) Award  
20 2022, A.K.K was supported by Autism Speaks Meixner Translational Postdoctoral Fellowship (No  
21 9728), and Pierre Mercier Foundation (Switzerland). F.B. is supported by the DZNE, the  
22 International Foundation for Research in Paraplegia, Wings for Life, the Deutsche  
23 Forschungsgemeinschaft, ERANET AXON REPAIR, and ERANET RATER SCI. F.B. is a member  
24 of the excellence cluster ImmunoSensation2 (EXC2151–390873048). ChatGPT was used as a  
25 proofreader for the revised version.



1 **Competing interests:** The authors report no biomedical financial interests or potential conflicts  
2 of interest.

3

#### 4 **Figure Legends**

##### 5 **Figure 1: Identifications of two missense variants in human *CYFIP1*.**

6 (A) Pedigree chart showing segregation of rare pathogenic *CYFIP1* variants c.1426A > G;  
7 p.(Ile476Val) and c.2225C > T; p.(Pro742Leu) in the family. Unfilled shapes denote typically  
8 developing individuals (TDI), while filled shapes denote probands; squares are males; circles are  
9 females. (B) Electropherograms of Sanger sequencing of genomic DNA of exons 14 and 20 of  
10 the *CYFIP1* from the family members (I-1, I-2, II-2 and II-3). The variants are highlighted in yellow.  
11 For exon 20 the overlapping peaks have been detected as “N” (an ambiguous, or unknown base)  
12 from the automatic detection software and interpreted as “T”. (C) Schematic representation of the  
13 *CYFIP1* protein (NP\_001274739.1). The functional domains are color coded: in magenta and  
14 orange (Rac1-binding sites), green (WAVE1-VCA), blue (Abi2-HSPC300) and purple (eIF4E),  
15 Arf1 (grey) respectively (45, 46, 51, 53, 65, 66). The putative FMRP binding region is shown in  
16 light blue (18, 43, 121). In light yellow the putative NCKAP1 binding regions (45, 47, 52, 66).  
17 Asterisks indicate missense variants, in black, the previously identified in individuals with ASD  
18 and learning disabilities (34-37) and in red the new identified variants in this work. (D) Structure  
19 of the WAVE regulatory complex (WRC) indicating the sites of *CYFIP1* variants. *CYFIP* is shown  
20 in red. Amino acid residues affected by missense variants are enlarged in circles. Next to each  
21 substitution the  $\Delta\Delta G$  value is reported. (E) Alignment of human *CYFIP1* protein  
22 (NP\_001274739.1) against the mouse (NP\_001158133.1), zebrafish (NP\_997924.1) and  
23 *Drosophila* (NP\_650447.1) homologs showing the conservation of sequences where the  
24 missense mutations are located. The variants identified in the probands are marked in light blue.

25

##### 26 **Figure 2: Characterization of the *CYFIP1* missense variants.**

1 (A) Quantification of *CYFIP1* mRNA levels by real-time qPCR in the affected individual (proband  
2 1, p.[(Ile476Val)];[(Pro742Leu)]) compared to TDI (3 lines, 22-33 years old and 1 line, 50 years  
3 old) and parents (the father, p.[(Ile476Val)];[(=)]) and the mother p. [(=)]; [(Pro742Leu)])  
4 fibroblasts. TDI n = 12, Proband 1 n = 3, Father n = 3, Mother n = 3, technical replicate. One-Way  
5 ANOVA, n.s. not significant. Data are represented as mean  $\pm$  S.E.M. (B) Left, representative  
6 Western blot showing *CYFIP1* in fibroblasts from the proband 1, parents and TDI (4 lines 22-33  
7 years old and 2 lines 50-57 years old). Right, bar plots showing the quantification of *CYFIP1* levels  
8 normalized over Vinculin,  $\alpha$ -Tubulin, and total protein content. TDI n = 31, Proband 1 n = 6, Father  
9 n = 7, Mother n = 7, technical replicates. One-Way ANOVA. n.s. not significant. Data are  
10 represented as mean  $\pm$  S.E.M.

11

### 12 **Figure 3: Impact of human *CYFIP1* missense variants on actin polymerization.**

13 (A) Representative images of primary fibroblasts from Proband 1, parental and TDI lines stained  
14 with phalloidin-TRITC to detect F-actin and DAPI for nuclei (Scale bar = 55  $\mu$ m). Quantification  
15 TRITC fluorescent intensity (B) and aspect ratio (C-D) in the proband 1, parents and TDI (4 lines  
16 22-33 years old and 3 lines 43-57 years old), fibroblasts. (C) Schematic representation of the  
17 Aspect Ratio parameter. Created with BioRender.com. Dots represent the quantification of a  
18 technical replicate performed on cells at different passage (TDI n = 26, Proband 1 = 5, Mother =  
19 5, Father = 5, 50-60 cells for each line). One-Way ANOVA followed by Sidak's multiple  
20 comparison test; exact significant *p*-values are reported in the figure. Data are represented as  
21 mean  $\pm$  S.E.M. (E) Representative kymographs at the level of the lamellar protrusions extracted  
22 from the fibroblasts from the Proband 1 and TDI (2 lines of 22 years). Quantification of length (F)  
23 number (G) and velocity (H) of lamellar protrusions. Dots represent kymographs from TDI (2 lines,  
24 n = 131 and Proband 1 n = 82, from 18-20 cells per genotype recorded and analyzed) (scale bar  
25 = 1  $\mu$ m). (F and H) unpaired Student's t-test. (G) Mann Whitney test, exact significant *p*-values  
26 are reported in the figure. Data are represented as mean  $\pm$  S.E.M. (I-J) Representative Western

1 blot showing the CYFIP1 immunoprecipitated complex from TDI (2 lines) and Proband 1  
2 fibroblasts protein extracts (lanes 1-3 and 4-6, respectively, Input) and the detection of NCKAP1  
3 (I) and WAVE1 (J). (K) Quantification of NCKAP1 and WAVE1 in the CYFIP1 immunoprecipitated  
4 complex. The protein levels were normalized to the immunoprecipitated CYFIP1 levels. Dots  
5 represent the quantification of a technical replicate performed on cells at different passages.  
6 NCKAP1 (TDI n = 16, Proband 1 n = 9), WAVE1 (TDI n = 8, Proband 1 n = 5). Multiple t-test  
7 corrected for multiple comparisons using Holm-Sidak method, exact significant *p*-values are  
8 reported in the figure. Data are represented as mean ± S.E.M.

9

10 **Figure 4: Modelling the human *CYFIP1* missense variants in *Drosophila*.**

11 (A) Alignment of the protein sequences of the human CYFIP1 with the fly CYFIP showing the  
12 similarity in the region affected by the missense variants. The variants identified in the probands  
13 are marked in light blue. (B) Generation of *Cytip*<sup>L471V</sup> and *Cytip*<sup>P760L</sup> alleles using the *scarless*  
14 genome editing approach. (C) Upper panel: representative Western blots for F-actin and G-actin  
15 levels from *Drosophila* whole brain. Lanes belongs to the same blot, n = 5-6 (pool of 20 fly heads)  
16 in control and *Cytip* KI flies. Lower panel: Quantification of the F/G actin ratio normalized to control  
17 flies. One-way ANOVA followed by Sidak's multiple comparisons test, exact significant *p*-values  
18 are reported in the figure. Data are represented as mean ± S.E.M. (D-H) 3D structure analysis of  
19 the s-LNvs axonal arborization in control and *Cytip* KI mutant flies. (D) Schematic representation  
20 of an hemibrain of *Drosophila* with highlighted the location and structure of the s-LNvs axonal  
21 dorsal projections. Left insets show a schematic magnification of the s-LNv dorsal projections and  
22 a max intensity confocal projection s-LNvs dorsal projections stained with PDF antibody. (E)  
23 Representative 3D reconstructions of the s-LNv dorsal projections showing the local z- and y axis.  
24 (F) Representative confocal max intensity projections of the s-LNv dorsal projections in control  
25 and *Cytip* mutant flies (upper panels, scale bar = 10 μm) and their 3D reconstructions (lower  
26 panels) (z-axis in blue-to-red color scale), 1 pixel = 0.06 μm and z-step size = 1 μm (see

1 Supplemental Materials and Methods for details). (G - H) Quantification of the 3D spread (G) and  
2 the axonal 3D volume (H) covered by the axonal arborization.  $n = 24-29$  axonal projections from  
3 14-15 brains per genotype. One-way ANOVA followed by Sidak's multiple comparisons test: exact  
4 significant  $p$ -values are reported in the figure. Data are represented as mean  $\pm$  S.E.M.

5

6 **Figure 5: Effects of the human *CYFIP1* missense variants on *Drosophila* social and motor**  
7 **behaviors.**

8 (A-B) Control and *Cyfi*p mutant flies were analyzed for the total number of social interactions in a  
9 competition for food assay. (A) Schematic representation of the behavioral protocol and setup for  
10 the competition for food assay. (B) Quantification of the total number of social interaction events.  
11  $n > 10$  (pool of 8 male flies each, from 3-5 independent experiments). One-way ANOVA followed  
12 by Sidak's multiple comparisons test; exact significant  $p$ -values are reported in the figure. Data  
13 are represented as mean  $\pm$  S.E.M. (C-E) Social space behavior. (C) Representative images of  
14 the social space arena in control and *Cyfi*p mutant flies. Different distances among flies are  
15 depicted in circles: in red, a close distance (0-0.5 cm) and in blue (1.0 – 1.5 cm) (scale bar = 1  
16 cm). (D) Distance to the closest flies indicated as percentage distribution of flies in the indicated  
17 ranges of distances, 0 - 0.5 cm, 0.5 - 1.0 cm, 1.0 -1.5 cm and  $> 1.5$  cm bins.  $n > 8$  arenas of 29-  
18 30 flies each per genotype. Kolmogorov–Smirnov test was assessed on the total distribution of  
19 the distances to the closest fly, exact significant  $p$ -values are reported in the figure. Data are  
20 represented as mean  $\pm$  S.E.M. (E) Social preference (social space index) based on the distribution  
21 of flies over a 1 cm maximum distance.  $n > 8$  arenas per genotype. One sample t- test compared  
22 to equal preference (0), exact significant  $p$ -values are reported in the figure. Data are represented  
23 as mean  $\pm$  S.E.M. (F-G) Rapid Iterative Negative Geotaxis climbing assay (RING) in control and  
24 *Cyfi*p KI mutants. (F) Schematic representation of the climbing assay (negative geotaxis)  
25 behavioral protocol. (G) Quantification of the number of flies (in percentage) that climbed the 6  
26 cm distance in 9 seconds after sudden stimulus.  $n > 11$  (groups of 17-20 flies each). One-way

1 ANOVA followed by Sidak's multiple comparisons test; exact significant  $p$ -values are reported in  
2 the figure. Data are represented as mean  $\pm$  S.E.M. (H-I) Locomotor activity in control and *Cyfi*  
3 KI mutants measured with the *Drosophila* Activity Monitoring System (DAMs, Trikinetics). (H)  
4 Schematic representation of the experimental setup composed of an activity monitoring tube for  
5 individual fly activity recording. The monitoring tubes are in an incubator with control light dark  
6 cycle and automatically recorded. Created with BioRender.com. (I) Quantification of the total  
7 activity in control and *Cyfi* KI mutants. Activity (beam crossings) over 24 hr.  $n = 70-100$  flies per  
8 genotype, from  $> 3$  independent experiments. One-way ANOVA followed by Sidak's multiple  
9 comparisons test: exact significant  $p$ -values are reported in the figure. Data are represented as  
10 mean  $\pm$  S.E.M.  
11

## 1 References

- 2 1. Abdelmoity AT, LePichon JB, Nyp SS, Soden SE, Daniel CA, Yu S (2012): 15q11.2  
3 proximal imbalances associated with a diverse array of neuropsychiatric disorders and mild  
4 dysmorphic features. *J Dev Behav Pediatr.* 33:570-576.
- 5 2. Burnside RD, Pasion R, Mikhail FM, Carroll AJ, Robin NH, Youngs EL, et al. (2011):  
6 Microdeletion/microduplication of proximal 15q11.2 between BP1 and BP2: a susceptibility region  
7 for neurological dysfunction including developmental and language delay. *Hum Genet.* 130:517-  
8 528.
- 9 3. Butler MG (2017): Clinical and genetic aspects of the 15q11.2 BP1-BP2 microdeletion  
10 disorder. *J Intellect Disabil Res.* 61:568-579.
- 11 4. Kirov G, Pocklington AJ, Holmans P, Ivanov D, Ikeda M, Ruderfer D, et al. (2012): De  
12 novo CNV analysis implicates specific abnormalities of postsynaptic signalling complexes in the  
13 pathogenesis of schizophrenia. *Mol Psychiatry.* 17:142-153.
- 14 5. Vanlerberghe C, Petit F, Malan V, Vincent-Delorme C, Bouquillon S, Boute O, et al. (2015):  
15 15q11.2 microdeletion (BP1-BP2) and developmental delay, behaviour issues, epilepsy and  
16 congenital heart disease: a series of 52 patients. *Eur J Med Genet.* 58:140-147.
- 17 6. Chaste P, Sanders SJ, Mohan KN, Klei L, Song Y, Murtha MT, et al. (2014): Modest impact  
18 on risk for autism spectrum disorder of rare copy number variants at 15q11.2, specifically  
19 breakpoints 1 to 2. *Autism Res.* 7:355-362.
- 20 7. Cox DM, Butler MG (2015): The 15q11.2 BP1-BP2 microdeletion syndrome: a review. *Int*  
21 *J Mol Sci.* 16:4068-4082.
- 22 8. Zhao Q, Li T, Zhao X, Huang K, Wang T, Li Z, et al. (2013): Rare CNVs and tag SNPs at  
23 15q11.2 are associated with schizophrenia in the Han Chinese population. *Schizophr Bull.*  
24 39:712-719.
- 25 9. Stefansson H, Meyer-Lindenberg A, Steinberg S, Magnusdottir B, Morgen K, Arnarsdottir  
26 S, et al. (2014): CNVs conferring risk of autism or schizophrenia affect cognition in controls.  
27 *Nature.* 505:361-366.
- 28 10. Cafferkey M, Ahn JW, Flinter F, Ogilvie C (2014): Phenotypic features in patients with  
29 15q11.2(BP1-BP2) deletion: further delineation of an emerging syndrome. *Am J Med Genet A.*  
30 164A:1916-1922.
- 31 11. de Kovel CG, Trucks H, Helbig I, Mefford HC, Baker C, Leu C, et al. (2010): Recurrent  
32 microdeletions at 15q11.2 and 16p13.11 predispose to idiopathic generalized epilepsies. *Brain.*  
33 133:23-32.

- 1 12. Ghani M, Pinto D, Lee JH, Grinberg Y, Sato C, Moreno D, et al. (2012): Genome-wide  
2 survey of large rare copy number variants in Alzheimer's disease among Caribbean hispanics.  
3 *G3 (Bethesda)*. 2:71-78.
- 4 13. Baldwin I, Shafer RL, Hossain WA, Gunewardena S, Veatch OJ, Mosconi MW, et al.  
5 (2021): Genomic, Clinical, and Behavioral Characterization of 15q11.2 BP1-BP2 Deletion  
6 (Burnside-Butler) Syndrome in Five Families. *Int J Mol Sci*. 22:1660.
- 7 14. Rafi SK, Butler MG (2020): The 15q11.2 BP1-BP2 Microdeletion (Burnside-Butler)  
8 Syndrome: In Silico Analyses of the Four Coding Genes Reveal Functional Associations with  
9 Neurodevelopmental Phenotypes. *Int J Mol Sci*. 21:3296.
- 10 15. Woo YJ, Kanellopoulos AK, Hemati P, Kirschen J, Nebel RA, Wang T, et al. (2019):  
11 Domain-Specific Cognitive Impairments in Humans and Flies With Reduced CYFIP1 Dosage. *Biol*  
12 *Psychiatry*. 86:306-314.
- 13 16. Silva AI, Kirov G, Kendall KM, Bracher-Smith M, Wilkinson LS, Hall J, et al. (2021):  
14 Analysis of Diffusion Tensor Imaging Data From the UK Biobank Confirms Dosage Effect of  
15 15q11.2 Copy Number Variation on White Matter and Shows Association With Cognition. *Biol*  
16 *Psychiatry*. 90:307-316.
- 17 17. Writing Committee for the E-CNVWG, van der Meer D, Sonderby IE, Kaufmann T, Walters  
18 GB, Abdellaoui A, et al. (2020): Association of Copy Number Variation of the 15q11.2 BP1-BP2  
19 Region With Cortical and Subcortical Morphology and Cognition. *JAMA Psychiatry*. 77:420-430.
- 20 18. De Rubeis S, Pasciuto E, Li KW, Fernandez E, Di Marino D, Buzzi A, et al. (2013): CYFIP1  
21 coordinates mRNA translation and cytoskeleton remodeling to ensure proper dendritic spine  
22 formation. *Neuron*. 79:1169-1182.
- 23 19. Pathania M, Davenport EC, Muir J, Sheehan DF, Lopez-Domenech G, Kittler JT (2014):  
24 The autism and schizophrenia associated gene CYFIP1 is critical for the maintenance of dendritic  
25 complexity and the stabilization of mature spines. *Transl Psychiatry*. 4:e374.
- 26 20. Zhao L, Wang D, Wang Q, Rodal AA, Zhang YQ (2013): *Drosophila* cyfip regulates  
27 synaptic development and endocytosis by suppressing filamentous actin assembly. *PLoS Genet*.  
28 9:e1003450.
- 29 21. Dominguez-Iturza N, Lo AC, Shah D, Armendariz M, Vannelli A, Mercaldo V, et al. (2019):  
30 The autism- and schizophrenia-associated protein CYFIP1 regulates bilateral brain connectivity  
31 and behaviour. *Nat Commun*. 10:3454.
- 32 22. Silva AI, Haddon JE, Ahmed Syed Y, Trent S, Lin TE, Patel Y, et al. (2019): Cyfip1  
33 haploinsufficient rats show white matter changes, myelin thinning, abnormal oligodendrocytes  
34 and behavioural inflexibility. *Nat Commun*. 10:3455.

- 1 23. Kanellopoulos AK, Mariano V, Spinazzi M, Woo YJ, McLean C, Pech U, et al. (2020):  
2 Aralar Sequesters GABA into Hyperactive Mitochondria, Causing Social Behavior Deficits. *Cell*.  
3 180:1178-1197 e1120.
- 4 24. Davenport EC, Szulc BR, Drew J, Taylor J, Morgan T, Higgs NF, et al. (2019): Autism and  
5 Schizophrenia-Associated CYFIP1 Regulates the Balance of Synaptic Excitation and Inhibition.  
6 *Cell Rep*. 26:2037-2051 e2036.
- 7 25. Stefansson H, Rujescu D, Cichon S, Pietilainen OP, Ingason A, Steinberg S, et al. (2008):  
8 Large recurrent microdeletions associated with schizophrenia. *Nature*. 455:232-236.
- 9 26. Mullen SA, Carvill GL, Bellows S, Bayly MA, Trucks H, Lal D, et al. (2013): Copy number  
10 variants are frequent in genetic generalized epilepsy with intellectual disability. *Neurology*.  
11 81:1507-1514.
- 12 27. Nebel RA, Zhao D, Pedrosa E, Kirschen J, Lachman HM, Zheng D, et al. (2016): Reduced  
13 CYFIP1 in Human Neural Progenitors Results in Dysregulation of Schizophrenia and Epilepsy  
14 Gene Networks. *PLoS One*. 11:e0148039.
- 15 28. Peng J, Wang Y, He F, Chen C, Wu LW, Yang LF, et al. (2018): Novel West syndrome  
16 candidate genes in a Chinese cohort. *CNS Neurosci Ther*. 24:1196-1206.
- 17 29. De Rubeis S, He X, Goldberg AP, Poultney CS, Samocha K, Cicek AE, et al. (2014):  
18 Synaptic, transcriptional and chromatin genes disrupted in autism. *Nature*. 515:209-215.
- 19 30. Purcell SM, Moran JL, Fromer M, Ruderfer D, Solovieff N, Roussos P, et al. (2014): A  
20 polygenic burden of rare disruptive mutations in schizophrenia. *Nature*. 506:185-190.
- 21 31. Tam GW, van de Lagemaat LN, Redon R, Strathdee KE, Croning MD, Malloy MP, et al.  
22 (2010): Confirmed rare copy number variants implicate novel genes in schizophrenia. *Biochem*  
23 *Soc Trans*. 38:445-451.
- 24 32. Glessner JT, Wang K, Cai G, Korvatska O, Kim CE, Wood S, et al. (2009): Autism  
25 genome-wide copy number variation reveals ubiquitin and neuronal genes. *Nature*. 459:569-573.
- 26 33. Oguro-Ando A, Rosensweig C, Herman E, Nishimura Y, Werling D, Bill BR, et al. (2015):  
27 Increased CYFIP1 dosage alters cellular and dendritic morphology and dysregulates mTOR. *Mol*  
28 *Psychiatry*. 20:1069-1078.
- 29 34. Griesi-Oliveira K, Suzuki AM, Alves AY, Mafra A, Yamamoto GL, Ezquina S, et al. (2018):  
30 Actin cytoskeleton dynamics in stem cells from autistic individuals. *Sci Rep*. 8:11138.
- 31 35. Waltes R, Duketis E, Knapp M, Anney RJ, Huguet G, Schlitt S, et al. (2014): Common  
32 variants in genes of the postsynaptic FMRP signalling pathway are risk factors for autism  
33 spectrum disorders. *Hum Genet*. 133:781-792.



- 1 36. Toma C, Torrico B, Hervas A, Valdes-Mas R, Tristan-Noguero A, Padillo V, et al. (2014):  
2 Exome sequencing in multiplex autism families suggests a major role for heterozygous truncating  
3 mutations. *Mol Psychiatry*. 19:784-790.
- 4 37. Homsy J, Zaidi S, Shen Y, Ware JS, Samocha KE, Karczewski KJ, et al. (2015): De novo  
5 mutations in congenital heart disease with neurodevelopmental and other congenital anomalies.  
6 *Science*. 350:1262-1266.
- 7 38. Yuen RKC, Merico D, Bookman M, Howe LJ, Thiruvahindrapuram B, Patel RV, et al.  
8 (2017): Whole genome sequencing resource identifies 18 new candidate genes for autism  
9 spectrum disorder. *Nat Neurosci*. 20:602-611.
- 10 39. Yuen RK, Merico D, Cao H, Pellecchia G, Alipanahi B, Thiruvahindrapuram B, et al.  
11 (2016): Genome-wide characteristics of de novo mutations in autism. *NPJ Genom Med*.  
12 1:160271-1602710.
- 13 40. Werling DM, Brand H, An JY, Stone MR, Zhu L, Glessner JT, et al. (2018): An analytical  
14 framework for whole-genome sequence association studies and its implications for autism  
15 spectrum disorder. *Nat Genet*. 50:727-736.
- 16 41. Turner TN, Coe BP, Dickel DE, Hoekzema K, Nelson BJ, Zody MC, et al. (2017): Genomic  
17 Patterns of De Novo Mutation in Simplex Autism. *Cell*. 171:710-722 e712.
- 18 42. Watanabe K, Stringer S, Frei O, Umicevic Mirkov M, de Leeuw C, Polderman TJC, et al.  
19 (2019): A global overview of pleiotropy and genetic architecture in complex traits. *Nat Genet*.  
20 51:1339-1348.
- 21 43. Napoli I, Mercaldo V, Boyl PP, Eleuteri B, Zalfa F, De Rubeis S, et al. (2008): The fragile  
22 X syndrome protein represses activity-dependent translation through CYFIP1, a new 4E-BP. *Cell*.  
23 134:1042-1054.
- 24 44. Takenawa T, Suetsugu S (2007): The WASP-WAVE protein network: connecting the  
25 membrane to the cytoskeleton. *Nat Rev Mol Cell Biol*. 8:37-48.
- 26 45. Chen Z, Borek D, Padrick SB, Gomez TS, Metlagel Z, Ismail AM, et al. (2010): Structure  
27 and control of the actin regulatory WAVE complex. *Nature*. 468:533-538.
- 28 46. Ding B, Yang S, Schaks M, Liu Y, Brown AJ, Rottner K, et al. (2022): Structures reveal a  
29 key mechanism of WAVE regulatory complex activation by Rac1 GTPase. *Nat Commun*. 13:5444.
- 30 47. Eden S, Rohatgi R, Podtelejnikov AV, Mann M, Kirschner MW (2002): Mechanism of  
31 regulation of WAVE1-induced actin nucleation by Rac1 and Nck. *Nature*. 418:790-793.
- 32 48. Kobayashi K, Kuroda S, Fukata M, Nakamura T, Nagase T, Nomura N, et al. (1998):  
33 p140Sra-1 (specifically Rac1-associated protein) is a novel specific target for Rac1 small GTPase.  
34 *J Biol Chem*. 273:291-295.

- 1 49. Steffen A, Rottner K, Ehinger J, Innocenti M, Scita G, Wehland J, et al. (2004): Sra-1 and  
2 Nap1 link Rac to actin assembly driving lamellipodia formation. *EMBO J.* 23:749-759.
- 3 50. Rottner K, Stradal TEB, Chen B (2021): WAVE regulatory complex. *Curr Biol.* 31:R512-  
4 R517.
- 5 51. Schaks M, Singh SP, Kage F, Thomason P, Klunemann T, Steffen A, et al. (2018): Distinct  
6 Interaction Sites of Rac GTPase with WAVE Regulatory Complex Have Non-redundant Functions  
7 in Vivo. *Curr Biol.* 28:3674-3684 e3676.
- 8 52. Stradal TE, Rottner K, Disanza A, Confalonieri S, Innocenti M, Scita G (2004): Regulation  
9 of actin dynamics by WASP and WAVE family proteins. *Trends Cell Biol.* 14:303-311.
- 10 53. Yang S, Tang Y, Liu Y, Brown AJ, Schaks M, Ding B, et al. (2022): Arf GTPase activates  
11 the WAVE regulatory complex through a distinct binding site. *Sci Adv.* 8:eadd1412.
- 12 54. Tada T, Sheng M (2006): Molecular mechanisms of dendritic spine morphogenesis. *Curr*  
13 *Opin Neurobiol.* 16:95-101.
- 14 55. Lewis TL, Jr., Courchet J, Polleux F (2013): Cell biology in neuroscience: Cellular and  
15 molecular mechanisms underlying axon formation, growth, and branching. *J Cell Biol.* 202:837-  
16 848.
- 17 56. Soderling SH, Guire ES, Kaech S, White J, Zhang F, Schutz K, et al. (2007): A WAVE-1  
18 and WRP signaling complex regulates spine density, synaptic plasticity, and memory. *J Neurosci.*  
19 27:355-365.
- 20 57. Spence EF, Soderling SH (2015): Actin Out: Regulation of the Synaptic Cytoskeleton. *J*  
21 *Biol Chem.* 290:28613-28622.
- 22 58. Jacquemont S, Pacini L, Jonch AE, Cencelli G, Rozenberg I, He Y, et al. (2018): Protein  
23 synthesis levels are increased in a subset of individuals with fragile X syndrome. *Hum Mol Genet.*  
24 27:2039-2051.
- 25 59. Cencelli G, Pacini L, De Luca A, Messia I, Gentile A, Kang Y, et al. (2023): Age-Dependent  
26 Dysregulation of APP in Neuronal and Skin Cells from Fragile X Individuals. *Cells.* 12:758.
- 27 60. Riedl J, Crevenna AH, Kessenbrock K, Yu JH, Neukirchen D, Bista M, et al. (2008):  
28 Lifeact: a versatile marker to visualize F-actin. *Nat Methods.* 5:605-607.
- 29 61. Doggett TM, Breslin JW (2011): Study of the actin cytoskeleton in live endothelial cells  
30 expressing GFP-actin. *J Vis Exp.* 57:3187.
- 31 62. Mariano V, Kanellopoulos AK, Aiello G, Lo AC, Legius E, Achsel T, et al. (2023): SREBP  
32 modulates the NADP(+)/NADPH cycle to control night sleep in Drosophila. *Nat Commun.* 14:763.
- 33 63. Association AP (2013): DSM-5 Diagnostic Classification. *Diagnostic and Statistical*  
34 *Manual of Mental Disorders*, 5th edition, text rev. ed: American Psychiatric Association.

- 1 64. Chen B, Brinkmann K, Chen Z, Pak CW, Liao Y, Shi S, et al. (2014): The WAVE regulatory  
2 complex links diverse receptors to the actin cytoskeleton. *Cell*. 156:195-207.
- 3 65. Di Marino D, Chillemi G, De Rubeis S, Tramontano A, Achsel T, Bagni C (2015): MD and  
4 Docking Studies Reveal That the Functional Switch of CYFIP1 is Mediated by a Butterfly-like  
5 Motion. *J Chem Theory Comput*. 11:3401-3410.
- 6 66. Chen B, Chou HT, Brautigam CA, Xing W, Yang S, Henry L, et al. (2017): Rac1 GTPase  
7 activates the WAVE regulatory complex through two distinct binding sites. *Elife*. 6:e29795.
- 8 67. Kawano Y, Yoshimura T, Tsuboi D, Kawabata S, Kaneko-Kawano T, Shirataki H, et al.  
9 (2005): CRMP-2 is involved in kinesin-1-dependent transport of the Sra-1/WAVE1 complex and  
10 axon formation. *Mol Cell Biol*. 25:9920-9935.
- 11 68. Santini E, Huynh TN, Longo F, Koo SY, Mojica E, D'Andrea L, et al. (2017): Reducing  
12 eIF4E-eIF4G interactions restores the balance between protein synthesis and actin dynamics in  
13 fragile X syndrome model mice. *Sci Signal*. 10:eaan0665.
- 14 69. Parenti I, Rabaneda LG, Schoen H, Novarino G (2020): Neurodevelopmental Disorders:  
15 From Genetics to Functional Pathways. *Trends Neurosci*. 43:608-621.
- 16 70. Kelleher RJ, 3rd, Bear MF (2008): The autistic neuron: troubled translation? *Cell*. 135:401-  
17 406.
- 18 71. Mercaldo V, Vidimova B, Gastaldo D, Fernandez E, Lo AC, Cencelli G, et al. (2023):  
19 Altered striatal actin dynamics drives behavioral inflexibility in a mouse model of fragile X  
20 syndrome. *Neuron*. 111:1760-1775 e1768.
- 21 72. Gkogkas CG, Khoutorsky A, Ran I, Rampakakis E, Nevarko T, Weatherill DB, et al. (2013):  
22 Autism-related deficits via dysregulated eIF4E-dependent translational control. *Nature*. 493:371-  
23 377.
- 24 73. Wiebe S, Nagpal A, Sonenberg N (2020): Dysregulated translational control in brain  
25 disorders: from genes to behavior. *Curr Opin Genet Dev*. 65:34-41.
- 26 74. Longo F, Klann E (2021): Reciprocal control of translation and transcription in autism  
27 spectrum disorder. *EMBO Rep*. 22:e52110.
- 28 75. Schmidt EK, Clavarino G, Ceppi M, Pierre P (2009): SUnSET, a nonradioactive method  
29 to monitor protein synthesis. *Nat Methods*. 6:275-277.
- 30 76. Svitkina T (2018): The Actin Cytoskeleton and Actin-Based Motility. *Cold Spring Harb*  
31 *Perspect Biol*. 10:a018267.
- 32 77. Dupraz S, Hilton BJ, Husch A, Santos TE, Coles CH, Stern S, et al. (2019): RhoA Controls  
33 Axon Extension Independent of Specification in the Developing Brain. *Curr Biol*. 29:3874-3886  
34 e3879.

- 1 78. Pollard TD, Borisy GG (2003): Cellular motility driven by assembly and disassembly of  
2 actin filaments. *Cell*. 112:453-465.
- 3 79. Suraneni P, Rubinstein B, Unruh JR, Durnin M, Hanein D, Li R (2012): The Arp2/3 complex  
4 is required for lamellipodia extension and directional fibroblast cell migration. *J Cell Biol*. 197:239-  
5 251.
- 6 80. van der Voet M, Nijhof B, Oortveld MA, Schenck A (2014): Drosophila models of early  
7 onset cognitive disorders and their clinical applications. *Neurosci Biobehav Rev*. 46 Pt 2:326-342.
- 8 81. Coll-Tane M, Krebbers A, Castells-Nobau A, Zweier C, Schenck A (2019): Intellectual  
9 disability and autism spectrum disorders 'on the fly': insights from Drosophila. *Dis Model Mech*.  
10 12:dmm039180.
- 11 82. Mariano V, Achsel T, Bagni C, Kanellopoulos AK (2020): Modelling Learning and Memory  
12 in Drosophila to Understand Intellectual Disabilities. *Neuroscience*. 445:12-30.
- 13 83. Schenck A, Bardoni B, Langmann C, Harden N, Mandel JL, Giangrande A (2003):  
14 CYFIP/Sra-1 controls neuronal connectivity in Drosophila and links the Rac1 GTPase pathway to  
15 the fragile X protein. *Neuron*. 38:887-898.
- 16 84. Cioni JM, Wong HH, Bressan D, Kodama L, Harris WA, Holt CE (2018): Axon-Axon  
17 Interactions Regulate Topographic Optic Tract Sorting via CYFIP2-Dependent WAVE Complex  
18 Function. *Neuron*. 97:1078-1093 e1076.
- 19 85. Fernandez MP, Berni J, Ceriani MF (2008): Circadian remodeling of neuronal circuits  
20 involved in rhythmic behavior. *PLoS Biol*. 6:e69.
- 21 86. Kozlov SV, Bogenpohl JW, Howell MP, Wevrick R, Panda S, Hogenesch JB, et al. (2007):  
22 The imprinted gene Magel2 regulates normal circadian output. *Nat Genet*. 39:1266-1272.
- 23 87. Petsakou A, Sapsis TP, Blau J (2015): Circadian Rhythms in Rho1 Activity Regulate  
24 Neuronal Plasticity and Network Hierarchy. *Cell*. 162:823-835.
- 25 88. Zwarts L, Vanden Broeck L, Cappuyens E, Ayroles JF, Magwire MM, Vulsteke V, et al.  
26 (2015): The genetic basis of natural variation in mushroom body size in Drosophila melanogaster.  
27 *Nat Commun*. 6:10115.
- 28 89. Rollmann SM, Zwarts L, Edwards AC, Yamamoto A, Callaerts P, Norga K, et al. (2008):  
29 Pleiotropic effects of Drosophila neuralized on complex behaviors and brain structure. *Genetics*.  
30 179:1327-1336.
- 31 90. Bachmann SO, Sledziowska M, Cross E, Kalbassi S, Waldron S, Chen F, et al. (2019):  
32 Behavioral training rescues motor deficits in Cyfip1 haploinsufficiency mouse model of autism  
33 spectrum disorders. *Transl Psychiatry*. 9:29.

- 1 91. Kim NS, Ringeling FR, Zhou Y, Nguyen HN, Temme SJ, Lin YT, et al. (2022): CYFIP1  
2 Dosages Exhibit Divergent Behavioral Impact via Diametric Regulation of NMDA Receptor  
3 Complex Translation in Mouse Models of Psychiatric Disorders. *Biol Psychiatry*. 92:815-826.
- 4 92. Simon AF, Chou MT, Salazar ED, Nicholson T, Saini N, Metchev S, et al. (2012): A simple  
5 assay to study social behavior in *Drosophila*: measurement of social space within a group. *Genes*  
6 *Brain Behav*. 11:243-252.
- 7 93. Jiang L, Cheng Y, Gao S, Zhong Y, Ma C, Wang T, et al. (2020): Emergence of social  
8 cluster by collective pairwise encounters in *Drosophila*. *Elife*. 9:e51921.
- 9 94. Gargano JW, Martin I, Bhandari P, Grotewiel MS (2005): Rapid iterative negative geotaxis  
10 (RING): a new method for assessing age-related locomotor decline in *Drosophila*. *Exp Gerontol*.  
11 40:386-395.
- 12 95. Hsiao K, Harony-Nicolas H, Buxbaum JD, Bozdagi-Gunal O, Benson DL (2016): Cyfip1  
13 Regulates Presynaptic Activity during Development. *J Neurosci*. 36:1564-1576.
- 14 96. Di Marino D, D'Annessa I, Tancredi H, Bagni C, Gallicchio E (2015): A unique binding  
15 mode of the eukaryotic translation initiation factor 4E for guiding the design of novel peptide  
16 inhibitors. *Protein Sci*. 24:1370-1382.
- 17 97. Bieling P, Hansen SD, Akin O, Li TD, Hayden CC, Fletcher DA, et al. (2018): WH2 and  
18 proline-rich domains of WASP-family proteins collaborate to accelerate actin filament elongation.  
19 *EMBO J*. 37:102-121.
- 20 98. Pollard TD, Blanchoin L, Mullins RD (2000): Molecular mechanisms controlling actin  
21 filament dynamics in nonmuscle cells. *Annu Rev Biophys Biomol Struct*. 29:545-576.
- 22 99. Rotty JD, Wu C, Bear JE (2013): New insights into the regulation and cellular functions of  
23 the ARP2/3 complex. *Nat Rev Mol Cell Biol*. 14:7-12.
- 24 100. Adzhubei IA, Schmidt S, Peshkin L, Ramensky VE, Gerasimova A, Bork P, et al. (2010):  
25 A method and server for predicting damaging missense mutations. *Nat Methods*. 7:248-249.
- 26 101. Whitelaw JA, Swaminathan K, Kage F, Machesky LM (2020): The WAVE Regulatory  
27 Complex Is Required to Balance Protrusion and Adhesion in Migration. *Cells*. 9:1635.
- 28 102. Yamazaki D, Fujiwara T, Suetsugu S, Takenawa T (2005): A novel function of WAVE in  
29 lamellipodia: WAVE1 is required for stabilization of lamellipodial protrusions during cell spreading.  
30 *Genes Cells*. 10:381-392.
- 31 103. Sweeney MO, Collins A, Padrick SB, Goode BL (2015): A novel role for WAVE1 in  
32 controlling actin network growth rate and architecture. *Mol Biol Cell*. 26:495-505.
- 33 104. Suetsugu S, Yamazaki D, Kurisu S, Takenawa T (2003): Differential roles of WAVE1 and  
34 WAVE2 in dorsal and peripheral ruffle formation for fibroblast cell migration. *Dev Cell*. 5:595-609.

- 1 105. Tahirovic S, Hellal F, Neukirchen D, Hindges R, Garvalov BK, Flynn KC, et al. (2010):  
2 Rac1 regulates neuronal polarization through the WAVE complex. *J Neurosci.* 30:6930-6943.
- 3 106. Begemann A, Sticht H, Begtrup A, Vitobello A, Faivre L, Banka S, et al. (2021): New  
4 insights into the clinical and molecular spectrum of the novel CYFIP2-related neurodevelopmental  
5 disorder and impairment of the WRC-mediated actin dynamics. *Genet Med.* 23:543-554.
- 6 107. Yan Z, Kim E, Datta D, Lewis DA, Soderling SH (2016): Synaptic Actin Dysregulation, a  
7 Convergent Mechanism of Mental Disorders? *J Neurosci.* 36:11411-11417.
- 8 108. Parviainen L, Dihanich S, Anderson GW, Wong AM, Brooks HR, Abeti R, et al. (2017):  
9 Glial cells are functionally impaired in juvenile neuronal ceroid lipofuscinosis and detrimental to  
10 neurons. *Acta Neuropathol Commun.* 5:74.
- 11 109. Thomason EJ, Escalante M, Osterhout DJ, Fuss B (2020): The oligodendrocyte growth  
12 cone and its actin cytoskeleton: A fundamental element for progenitor cell migration and CNS  
13 myelination. *Glia.* 68:1329-1346.
- 14 110. Rubenstein JL, Merzenich MM (2003): Model of autism: increased ratio of  
15 excitation/inhibition in key neural systems. *Genes Brain Behav.* 2:255-267.
- 16 111. Nakashima M, Kato M, Aoto K, Shiina M, Belal H, Mukaida S, et al. (2018): De novo  
17 hotspot variants in CYFIP2 cause early-onset epileptic encephalopathy. *Ann Neurol.* 83:794-806.
- 18 112. Zweier M, Begemann A, McWalter K, Cho MT, Abela L, Banka S, et al. (2019): Spatially  
19 clustering de novo variants in CYFIP2, encoding the cytoplasmic FMRP interacting protein 2,  
20 cause intellectual disability and seizures. *Eur J Hum Genet.* 27:747-759.
- 21 113. Spillane M, Gallo G (2014): Involvement of Rho-family GTPases in axon branching. *Small*  
22 *GTPases.* 5:e27974.
- 23 114. Bradke F (2022): Mechanisms of Axon Growth and Regeneration: Moving between  
24 Development and Disease. *J Neurosci.* 42:8393-8405.
- 25 115. MacDonald M, Lord C, Ulrich D (2013): The relationship of motor skills and adaptive  
26 behavior skills in young children with autism spectrum disorders. *Res Autism Spectr Disord.*  
27 7:1383-1390.
- 28 116. Doan RN, Lim ET, De Rubeis S, Betancur C, Cutler DJ, Chiochetti AG, et al. (2019):  
29 Recessive gene disruptions in autism spectrum disorder. *Nat Genet.* 51:1092-1098.
- 30 117. Bacchelli E, Ceroni F, Pinto D, Lomartire S, Giannandrea M, D'Adamo P, et al. (2014): A  
31 CTNNA3 compound heterozygous deletion implicates a role for alphaT-catenin in susceptibility  
32 to autism spectrum disorder. *J Neurodev Disord.* 6:17.

- 1 118. Siu WK, Lam CW, Gao WW, Vincent Tang HM, Jin DY, Mak CM (2016): Unmasking a  
2 novel disease gene NEO1 associated with autism spectrum disorders by a hemizygous deletion  
3 on chromosome 15 and a functional polymorphism. *Behav Brain Res.* 300:135-142.
- 4 119. Vorstman JA, van Daalen E, Jalali GR, Schmidt ER, Pasterkamp RJ, de Jonge M, et al.  
5 (2011): A double hit implicates DIAPH3 as an autism risk gene. *Mol Psychiatry.* 16:442-451.
- 6 120. Lim ET, Raychaudhuri S, Sanders SJ, Stevens C, Sabo A, MacArthur DG, et al. (2013):  
7 Rare complete knockouts in humans: population distribution and significant role in autism  
8 spectrum disorders. *Neuron.* 77:235-242.
- 9 121. Schenck A, Bardoni B, Moro A, Bagni C, Mandel JL (2001): A highly conserved protein  
10 family interacting with the fragile X mental retardation protein (FMRP) and displaying selective  
11 interactions with FMRP-related proteins FXR1P and FXR2P. *Proc Natl Acad Sci U S A.* 98:8844-  
12 8849.

13

**KEY RESOURCES TABLE**

Resource Type	Specific Reagent or Resource	Source or Reference	Identifiers	Additional Information
Add additional rows as needed for each resource type	Include species and sex when applicable.	Include name of manufacturer, company, repository, individual, or research lab. Include PMID or DOI for references; use "this paper" if new.	Include catalog numbers, stock numbers, database IDs or accession numbers, and/or RRIDs. RRIDs are highly encouraged; search for RRIDs at <a href="https://scicrunch.org/resources">https://scicrunch.org/resources</a> .	Include any additional information or notes if necessary.



**Table 1. Clinical features of individuals with recessive *CYFIP1* missense variants.**

	<b>Individual 1 (II-2) – Proband 1</b>	<b>Individual 2 (II-3)</b>
<b>CYFIP1 variant</b>	p.(Ile476Val); p.(Pro746Val)	p.(Ile476Val); p.(Pro746Val)
<b>Inheritance</b>	p.(Ile476Val) paternal p.(Pro746Val) maternal	p.(Ile476Val) paternal p.(Pro746Val) maternal
<b>Sex</b>	Male	Male
<b>Gestational age (weeks)</b>	39 (amenorrhea)	40 (amenorrhea)
<b>Birth HC/length/weight standard deviations</b>	32,5cm (-2 SD) /50 cm (M)/3315gr (M)	32 cm (-2 SD)/ 48 (-1,5 SD)/ 2630gr (-1,5 SD)
<b>HC/length/weight at last investigation standard deviations</b>	52 cm (-3SD)/ 157 cm (-3SD)/ 43,5 Kgs (-2,5SD) at 17,5 years	48 cm (-3SD)/ 120,5 cm (M)/ 23,4kgs (-1SD) at 9 years
<b>Microcephaly</b>	Yes	Yes
<b>Morphological features</b>	Large mouth, thick lips, hypertelorism, low hairline	Large mouth, thick lips, hypertelorism, low hairline
<b>Developmental delay</b>	Severe developmental delay can sit up, walk with assistance	Severe developmental delay can sit up, walk with assistance
<b>Age at unassisted sitting</b>	4 years	1 year
<b>Age at independent walking</b>	No independent walking	No independent walking
<b>Age at first words</b>	No words	No words
<b>Age at last evaluation</b>	17 years and 8 months old	13 years et 4 months old
<b>Speech development</b>	Non-verbal	Non-verbal
<b>Intellectual disability</b>	Profound	Profound
<b>Abnormal behavior</b>	Paroxysmal bursts of laughter/ pseudo-Angelman behavior (happy demeanor) Hyperactivity Repetitive behavior (head banging)	Unmotivated laughter/ pseudo-Angeln behavior (happy demeanor)
<b>Seizure (age of onset)</b>	Yes (3 years)	Yes (6 years)
<b>Epilepsy syndrome</b>	Yes	Yes
<b>Seizure type/ medicament</b>	Absence seizures / ZONISAMIDE and valproate	Absence seizures / valproate
<b>Current seizure frequency</b>	Several times a week	Stabilized epilepsy
<b>EEG findings</b>	Paroxysm	Slow track
<b>Cerebral MRI findings</b>	FLAIR hyper signal in the thalamus, moderate ventriculomegaly, normal spectroscopy	Normal
<b>Muscular hypo-/hypertonia</b>	Spasticity of the lower limbs, pyramidal syndrome	Trunk ataxia
<b>Other neurological issues</b>	Autistic symptoms	Autistic symptoms
<b>Other features</b>	Scoliosis (arthrodesis), strabismus	Valgus flat feet (arthrodesis)

Abbreviations: HC: head circumference; EEG: electroencephalogram; MRI: magnetic resonance imaging.

**Table 2. Detection of the SNVs by Sanger sequencing in the proband 1 and prediction of pathogenicity.**

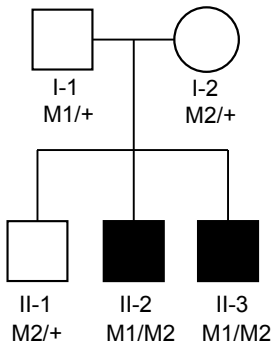
Gene variant	Genomic position	Mode of transmission	Dbsnp	PolyPhen-2	SIFT	CADD phred	Revel	GnomAD v3	SPiP prediction	Reason for exclusion
<i>CLCN3</i> (c.2031G>A p.Val677=)	chr4:g.170628299G>A	<i>De novo</i>	Not reported	Benign	Tolerated			Not reported		Considered benign by all predicting bioinformatic softwares; Not present in proband 2
<i>SFI1</i> (c.1323G>A p.Leu441=)	chr22:g.31985435G>A	<i>De novo</i>	rs1479552764	Benign	Benign			Not reported		Considered benign by all predicting bioinformatic softwares; Not present in proband 2
<i>POLA1</i> (c.617C>T p.Thr206Met)	chrX:g.24734570C>T	X-linked	rs200356660	Benign	Tolerated	7.66	Benign	5/112242	69.33% risk of altering the consensus splice site	Considered benign/tolerated by SIFT, CADD, PolyPhen2, REVEL; Not present in proband 2
<i>MAGEB2</i> (c.47G>A p.Arg16His)	chrX:g.30236744G>A	X-linked	rs151181148	Possibly damaging	Tolerated	10.29	Benign	33/112089		Considered benign/tolerated by SIFT, CADD, REVEL; Not present in proband 2
<i>SMC1A</i> (c.861G>A p.Lys287=)	chrX:g.53439197C>T	X-linked	rs782543093	Benign	Benign			13/111573		Considered benign by all predicting bioinformatic softwares;
<i>UXT</i> (c.264C>G p.Asn88Lys)	chrX:g.47516991G>C	X-linked	Not reported	Probably damaging	Damaging	24.1	Uncertain	Not reported	30.67% risk of creation of a new splice site	Gene involved in syndromic disorder that cannot explain the probands phenotype (124)
<i>IFIH1</i> (c.1230T>G p.Ile410Met)	chr2:g.163138952A>C	Recessive	Not reported	Probably damaging	Damaging	22.70		Not reported		Inherited from the unaffected father; Not present in proband 2
<i>IFIH1</i> (c.949C>T p.Gln317*)	chr2:g.163144791G>A	Recessive	rs74162079			37.00		5/151872		Inherited from the unaffected mother; Loss of function of the gene is related to syndromic disorders that cannot explain the probands phenotype (125)

<i>TTN</i> (c.89846C>T p.Thr29949Ile)	chr2:g.179417781G>A	recessive	rs1284316750	Possibly damaging	Damaging	22.5	Uncertain	1/247238		Not present in proband 2
<i>TTN</i> (c.55378A>G p.Thr18460Al a)	chr2:g.179466439T>C	recessive	rs727503600	Probably damaging	Tolerated	24.00	Uncertain	17/152066		Gene involved in syndromic disorder that cannot explain the probands phenotype (126)
<i>CYFIP1</i> (c.1426A>G p.Ile476Val)	chr15:g.22954276A>G	recessive	rs148341871	Possibly damaging	Tolerated	22.70	Benign	15/152142		//
<i>CYFIP1</i> (c.2225C>T p.Pro742Leu)	chr15:g.22962505C>T	recessive	rs139576657	Benign	Tolerated	23.40	Benign	6/152210		//
<i>SCAF1</i> (c.436A>C p.S146R)	chr19:g.50150045A>C	recessive	Not reported	Benign	Damaging	23.8	Benign	Not reported		Not present in proband 2
<i>SCAF1</i> (c.3181G>A p.A1061T)	chr19:g.50156827G>A	recessive	rs183980772	Benign	Damaging	22.8	Benign	42/152020		Not present in proband 2

Selected variants have been narrowed down using consecutive filters based on different models of inheritance (*De novo*, X-linked and recessive) and damage prediction scores (PolyPhen-2 (102), SIFT (127), CADD (128), Revel (129) and SPIP (130)). All the variants listed have been checked for their presence in the second affected individual (II-3).

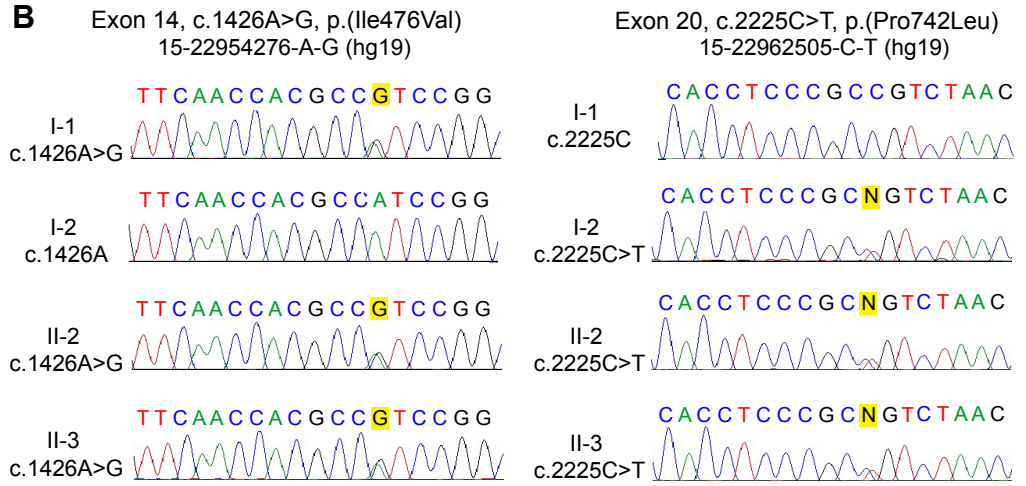
**Figure 1.**

**A**

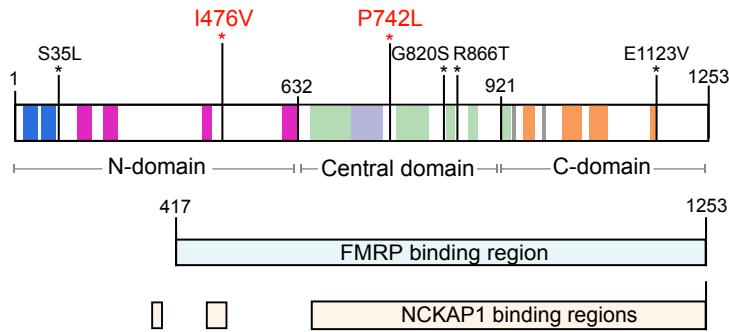


M1: *CYFIP1*: chr15:c.1426A>G  
M2: *CYFIP1*: chr15:c.2225C>T

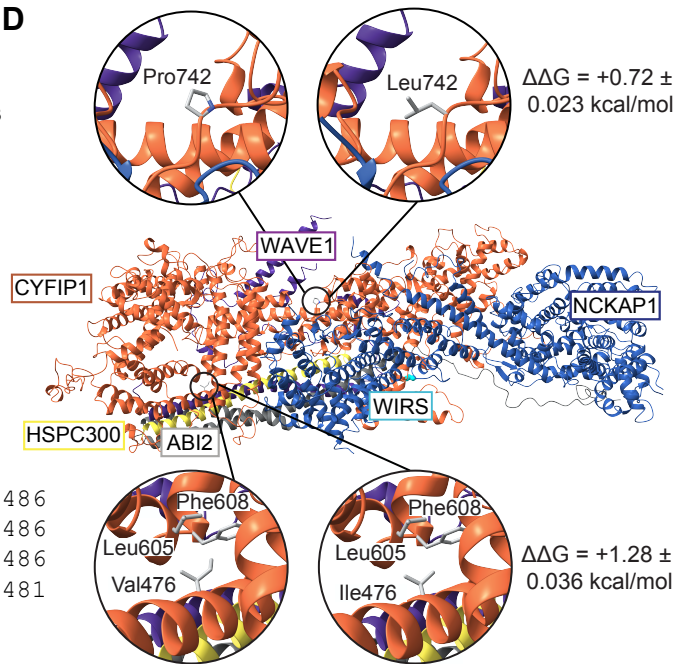
**B**



**C**



**D**



**E**

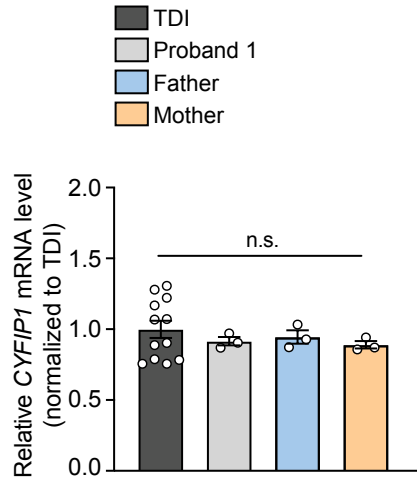
		p.I476			
<i>H. sapiens</i>	CYFIP1	469	ESVFNHAI	RHTVYAALQD	486
<i>M. musculus</i>	Cyfp1	469	ESVFNHAI	RHTVYAALQD	486
<i>D. rerio</i>	cyfp1	469	ESVFNHAI	RHTIYSALQD	486
<i>D. melanogaster</i>	CYFIP	464	ETVLCEAI	RNNIYSELQD	481

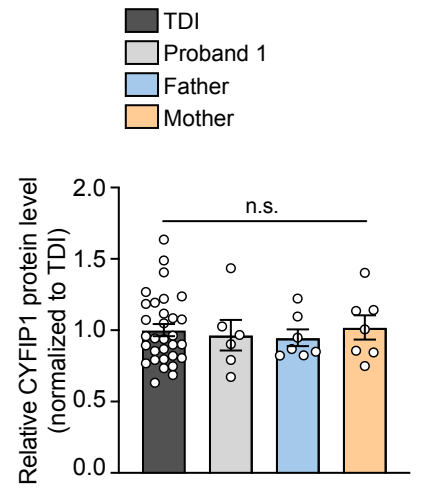
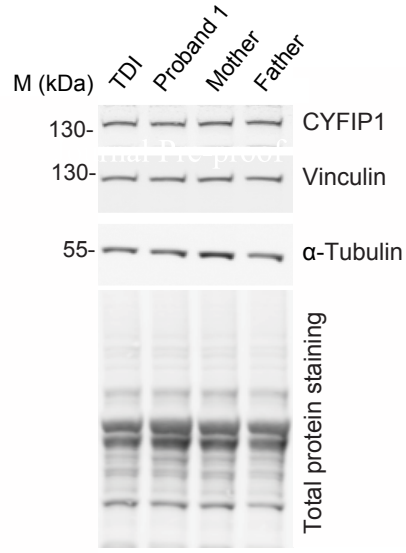
		p.P742			
<i>H. sapiens</i>	CYFIP1	736	GATIH-L	PSPNRYETLLK	752
<i>M. musculus</i>	Cyfp1	736	GATIH-L	PSPNRYETLLK	752
<i>D. rerio</i>	cyfp1	736	GANIS-W	PSSNRYETLLK	752
<i>D. melanogaster</i>	CYFIP	753	GFNFQSY	PRNNRYETLLK	770

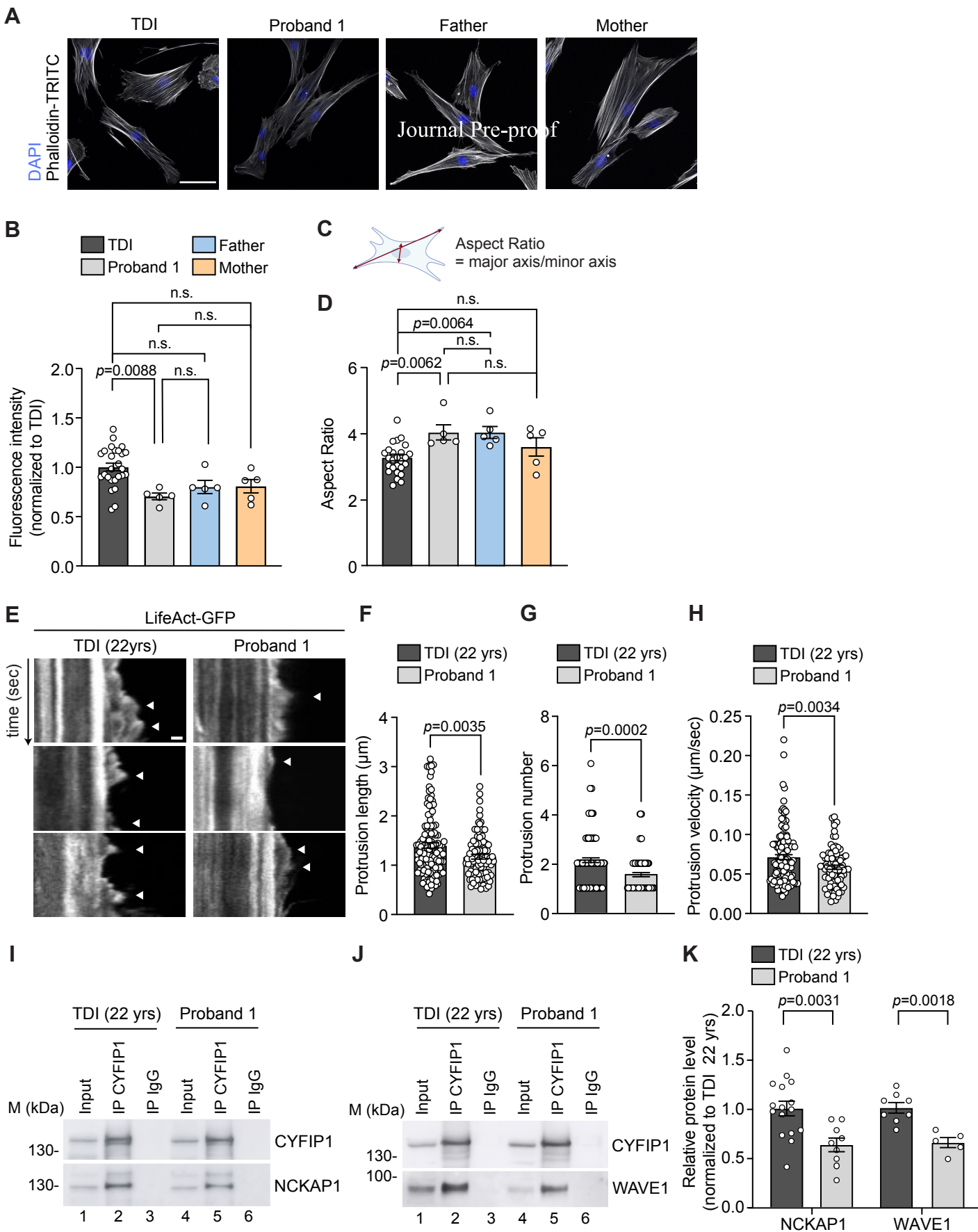
**Figure 2.**

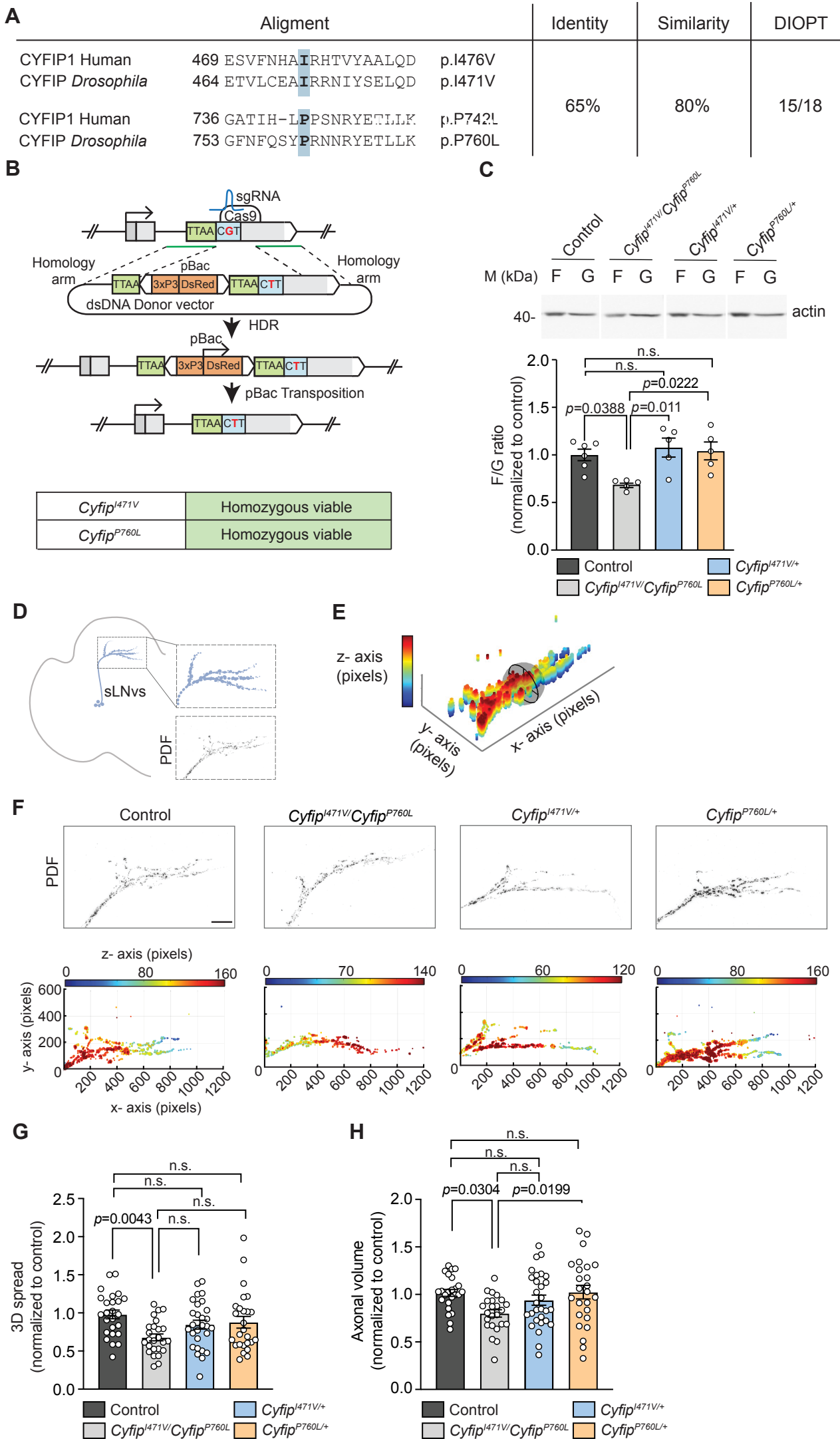
**A**



**B**



**Figure 3.**

**Figure 4.**

**Figure 5.**