

Innovative governance models to manage World Heritage sites.

Government And Local Communities In Participatory Processes Towards Sustainable Management Of World Heritage Sites.

Camille Castelain, Etienne Polge & Laurent Rieutort

UMR Territoires

(Université Clermont Auvergne, AgroParisTech, INRAE, VetAgro Sup)

IGU Paris 2022

20/07/2022 à l'Institut de Géographie



Summary

Research issue and hypothesis

Overview of the research

Material and methods

Multi-party governance arrangements

Simplified and cohesive management

Participatory and collaborative processes

International and cross-site support

Conclusion and perspectives



Research issue and hypothesis

Research objective:

To understand the participatory processes including government and local communities towards sustainable management of World Heritage sites



Research issue:

How innovative governance arrangements at the local level are created and institutionalized in World Heritage sites ?



Main hypothesis:

Governance arrangements are created in order to respond to the requirements of the World Heritage Convention and its orientations and then modified to be adapted to the management of the World Heritage site

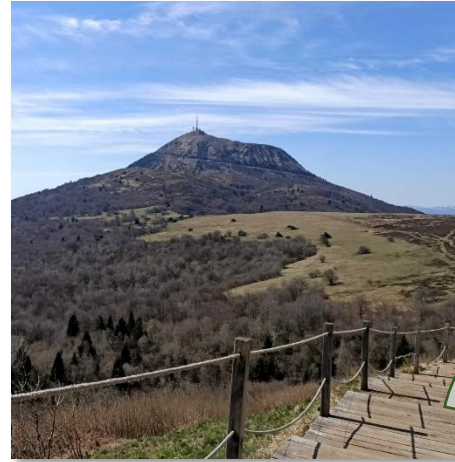


Underlying assumption:

Governance arrangements can evolve and be mobilized in order to involve Government, co-managers and local communities in managing World Heritage sites

Overview of the research

- **Ph. D thesis:** appropriation by locals of the process of inscription and valorisation of a rural territory on the World Heritage list.
- **Research program: Valo-sites**
 - Creation of evaluation methods in order to quantify the socio-economic benefits of management policies of natural sites
 - Main studied area: Chaîne des Puys - Limagne fault tectonic arena
 - Partner sites including the The Causses and the Cévennes, Mediterranean agro-pastoral Cultural Landscape
- **Studied areas :**
 - Chaîne des Puys – Limagne Fault
 - Causses et Cévennes



Material & Methods

- **Primary data collection :**
 - 26 exploratory interviews (e.g. with the management team, local elected officials, departmental tourism agencies)
 - 60 semi-directed and sociometric interviews (e.g. with associations and companies involved in the valorisation of the World Heritage recognition)
- **Secondary data collection :**
 - Literature review on the process of candidature and its effects on management
 - Bibliographic review :
 - Programmatic documents (e.g. management plans)
 - Meeting minutes of the various governance bodies
 - Archives of the project team (e.g. team behind the World Heritage site's recognition)
- **Data analysis :**
 - Analysis of the candidature and recognition's valorisation as a process (Oiry et al., 2010)
 - Analysis of the governance mechanisms as model of territorial governance (Lamara et al., 2009 ; Leloup et al., 2005 ; Rey-Valette et al., 2014)






















Multi-party governance arrangements (1/2)



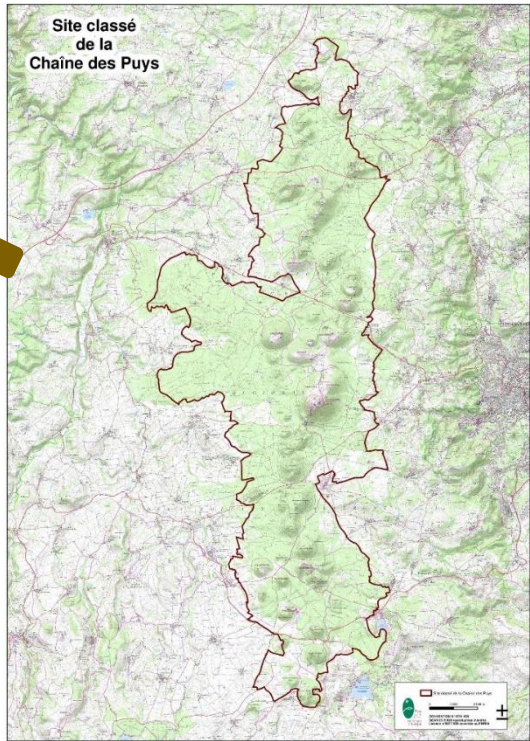
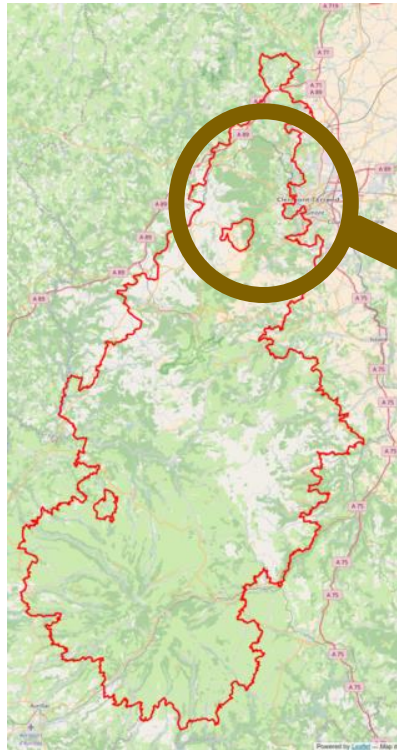
Management bodies	Chaîne des Puys - Limagne fault	Causse et Cévennes
Consultative bodies	Local board	Territorial conference
Steering body	Steering committee	Steering committee
Operational bodies	World Heritage team Technical committee Monitoring unit	Technical team
Advice and support bodies	Scientific council of the World Heritage site and of the « Grand Site de France » Working groups : <ul style="list-style-type: none"> • Agriculture • Outdoor activities • Geological heritage and quarries • Police authorities • Business development • Forest management • Urban planning and landscapes 	Scientific council of the World Heritage site Working groups

Multi-party governance arrangements (2/2)

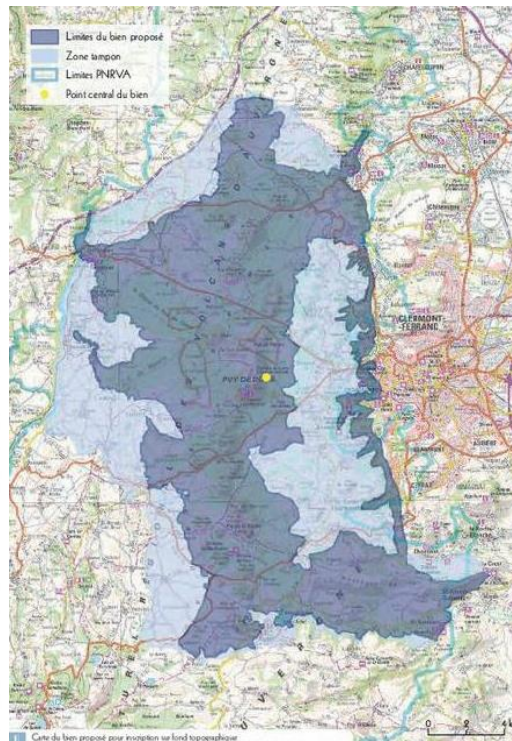


Management bodies	Chaîne des Puys - Limagne fault	Causse et Cévennes
Consultative bodies	Local board 	Territorial conference  (2018)
Steering body	Steering committee 	Steering committee  (2015)
Operational bodies	Shared management team  (2020) Public authority : <ul style="list-style-type: none"> • Major heritage sites • World Heritage sites and tourism  (2021) 	Administrative cross-region management team  (2012)
Advice and support bodies	Scientific council of the World Heritage site  Scientific council of the « Grand Site de France »  Working group : <ul style="list-style-type: none"> • Police authorities  • Forest management  • Landscape planning  	Scientific council of the World Heritage site  Working groups : <ul style="list-style-type: none"> • Management plan  • Landscape  • Cultural heritage  • Tourism  • Agro pastoralism  Committee of decentralized services 

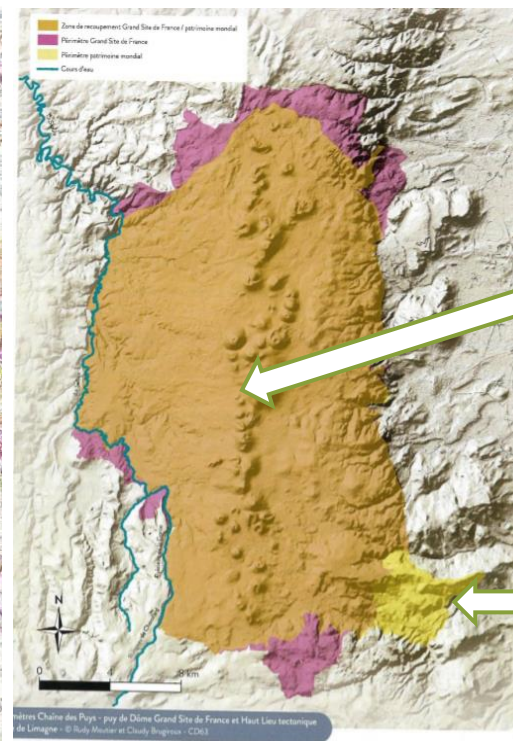
Simplified and cohesive management (1/2)



Regional natural park (1977) managed by the natural park team



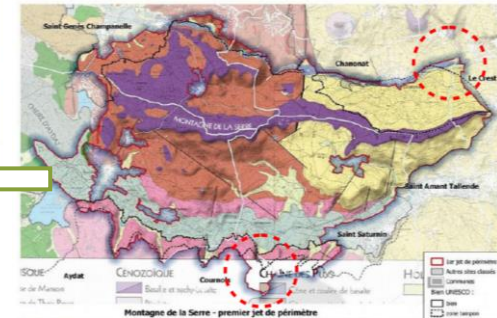
World Heritage site (2018) managed by the department and the natural park



« Grand Site de France » (2008 - 2014 - 2020) managed by the decentralized services and the department



« Grand Site de France »

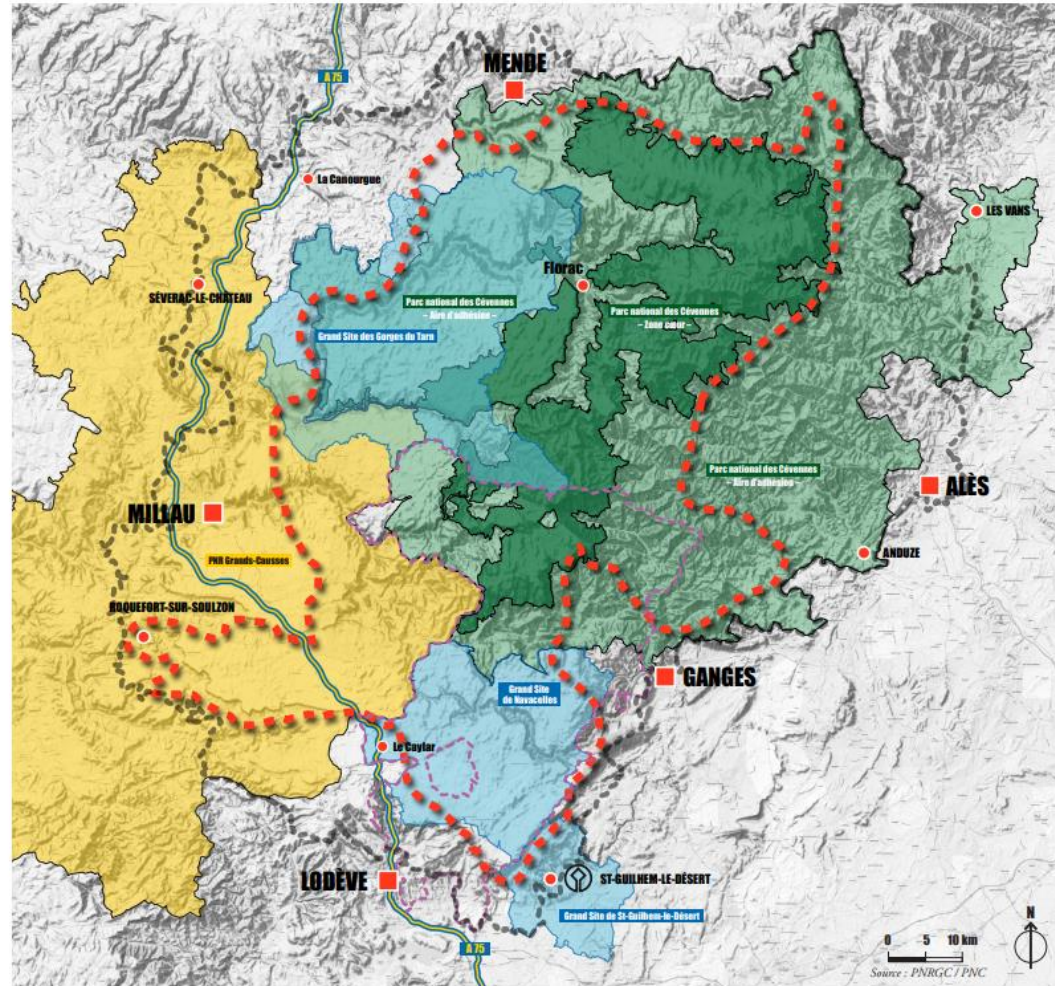


New « Site classé » (2024 ?) managed by decentralized services

Simplified and cohesive management (2/2)

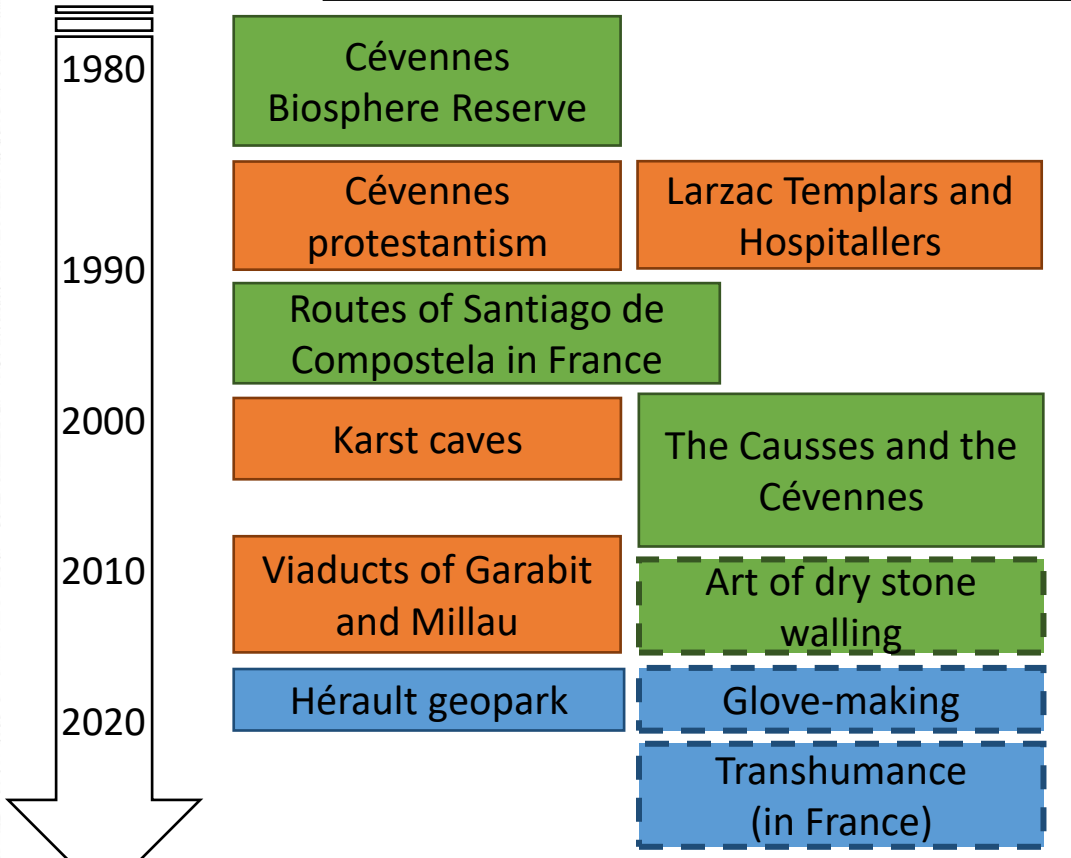
Légende

- Parc national des Cévennes - Zone cœur
- Parc national des Cévennes - Aire d'adhésion
- Parc naturel régional des Grands Causses
- Opérations Grands sites
- Centres permanents d'initiatives pour l'environnement (CPIE) des causses méridionaux
- Périmètre proposé à l'inscription
- Zone tampon
- Ville-porte



Caption :

Inscribed	World Heritage List
Not inscribed	List of Intangible Cultural Heritage
On going	



Participatory and collaborative processes (1/2)

Scientific council
Local board
Manager's team
Guides' network
Foundation

Mobilization of the research sector

- Conventions with university
- Employment of researchers
- Funding of local research
- Funding of conferences

Mobilization of the private sector

- Chaine des Puys - Limagne Fault foundation
- Committed companies network
- Committed mountain guides network
- Catalog of derivative products
- Auvergne destination network

Mobilization of local officials

- Support letters from mayors
- Meetings with municipal teams
- Funding by cross-municipal agencies

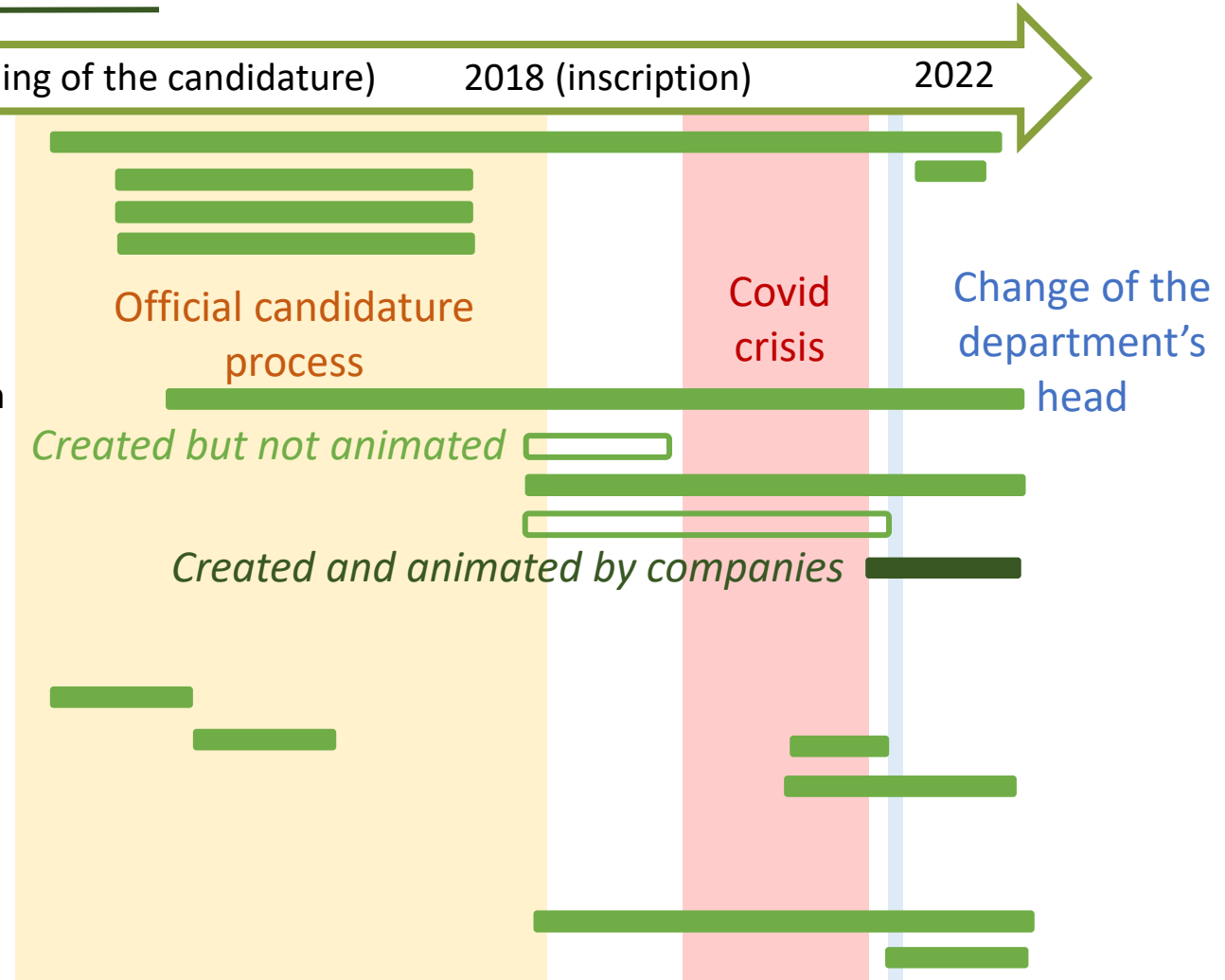
Mobilization of inhabitants

- Local ambassadors network
- Guided tours in village by managers

2006 (beginning of the candidature)

2018 (inscription)

2022



Local board

Local board

Local board

Participatory and collaborative processes (2/2)

Mobilization of the research sector

- TerraMed network
- Ph-D funding

Mobilization of the private sector

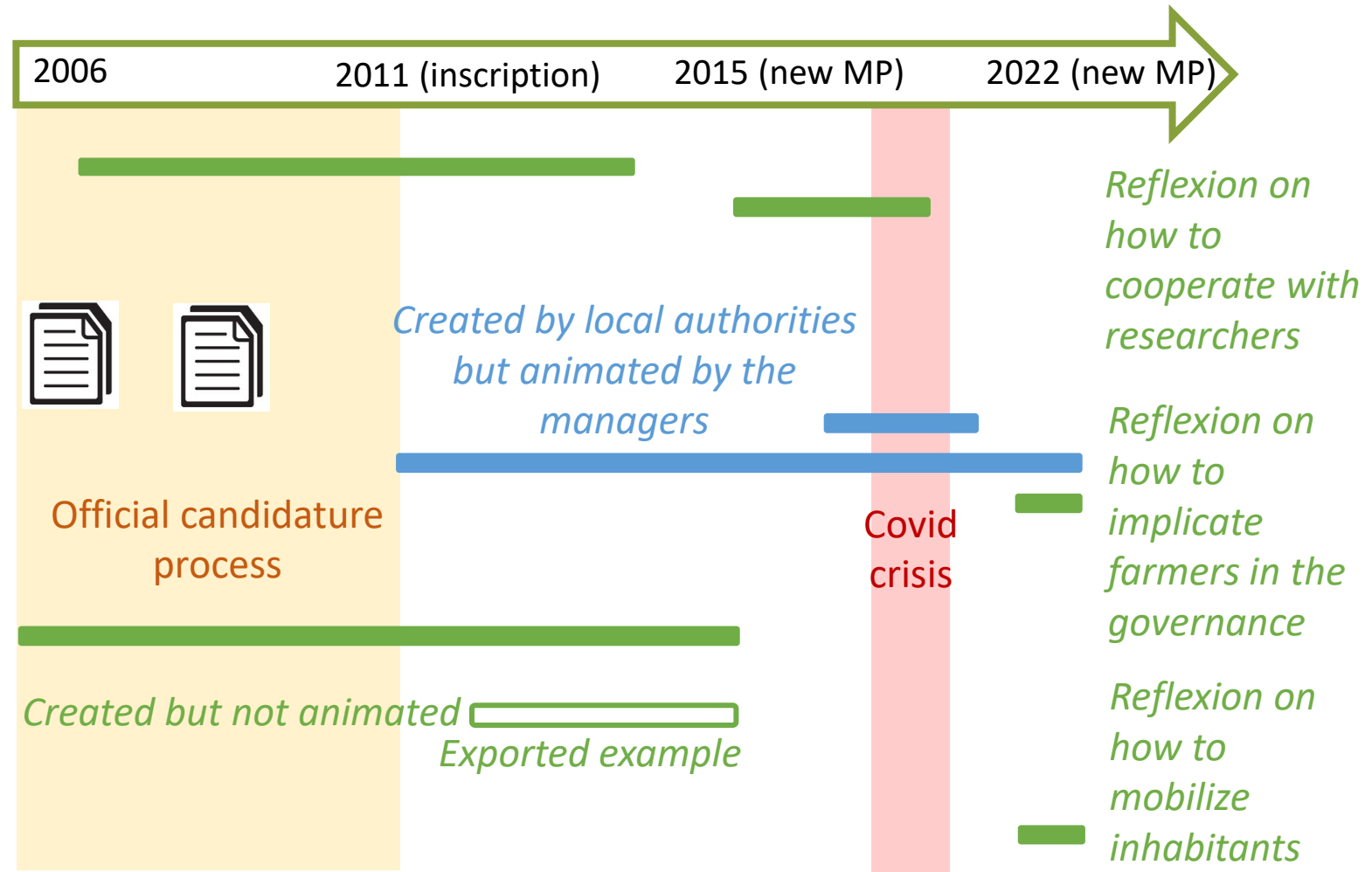
- PDO for cheese production
- PDO for meat production
- Local farms
- Committed touristic destination network
- Study of the implication of farm owners

Mobilization of local officials

- Association of political personalities (supposed to be the steering committee)
- Cities' (as entrance gate) network

Mobilization of inhabitants

- Talks and spectacles in villages





International and cross-site support


World Heritage sites	Cross-sites cooperation	Research cooperation
Chaîne des Puys – Limagne Fault	<ul style="list-style-type: none"> • Study in Ethiopia in order to launch a project of candidature on the World Heritage list (→ <i>project unachieved</i>) • Creation of an association in 2021 “Association of the inhabited natural sites on the World Heritage List” (→ <i>launch for the 50th anniversary of the convention</i>) 	Scientific conferences: <ul style="list-style-type: none"> • 2011: France (forum on geotourism) • 2013: France (MINaH)
	<ul style="list-style-type: none"> • Participation in the French World Heritage sites association • Discussion with Laponia or the Loire Valley World Heritage site 	Valo-sites project (→ <i>no discussion initiated yet</i>)
Causses and Cévennes	<ul style="list-style-type: none"> • Twinnings: <ul style="list-style-type: none"> ○ Madriu-Perafita-Claror Valley (→ <i>trip with touristic ambassadors cancelled in 2020</i>) ○ South China Karst (→ <i>pre-existing twinning between regions</i>) • World heritage sites of Occitanie region network 	Scientific conferences (ResoPasto → TerraMed): <ul style="list-style-type: none"> • 2007: France • 2009: Albania • 2012: France • 2014 : Greece


Conclusion


Topics:

- Diversity of actors 
 - Huge number of actor from different sectors
 - Higher when thought about during the candidature phase
 - Farmers are missing!

- Actors' involvement in management 
 - Strong involvement in preservation from public actors and valorization from private ones
 - Awareness transferred to private actors
 - Networks need to be animated

- Governance bodies' role 
 - Working operational and advice bodies
 - Lack of steering committee
 - Consultative bodies to be improved

- Cohesive management between governance bodies 
 - Actions implemented to simplify co-management
 - Collaboration should be thought through between co-managers / governance bodies

- Governance arrangements' evolution 
 - Creation of a governance body or a network doesn't mean it will be mobilized and perpetuated

Perspectives: creation of adaptable governance models

Research issue: **DISCUSSED**

How innovative governance arrangements of WH sites at the local level are created and institutionalized ?



- Governance arrangements created by public actors → candidature phase
- First changes when the WH site is recognized → implementation phase
- Later changes depending on the actors' involvement → management phase

Main hypothesis: **PROVED**

Governance arrangements :

- are created in order to respond to the requirements of the WHC
- and then modified to be adapted to the management of the WH site



- Requirements based on the creation of governance bodies in order to edit and implement the management plan + the participation of local communities
- Governance arrangements are implemented in:
 - a institutional context with preexisting managers
 - a political context with set priorities
 - a financial context with limited resources allocated

Underlying assumption: **TO BE NUANCED**

Governance arrangements can evolve and be mobilized in order to involve government, co-managers and local communities



- Involvement of researchers / politicians / companies / associations
- Government represented by decentralized services backing managers
- Collaboration with co-managers doesn't mean it is coordinated
- Locals are represented by officials or associations, they can participate in management activities but are not decision makers

Further research is needed such as a study of the coordination of actors in governance arrangements