



**HAL**  
open science

# In process temperature and tool wear for the machining of aeronautic aluminum under different lubrication conditions

Bruno Lavisse, Xavier Tardif, Dmitry Bondarenko, Mathieu Ritou, Guénaël Germain

## ► To cite this version:

Bruno Lavisse, Xavier Tardif, Dmitry Bondarenko, Mathieu Ritou, Guénaël Germain. In process temperature and tool wear for the machining of aeronautic aluminum under different lubrication conditions. *Machining Science and Technology*, 2023, 27 (5), pp.556-576. 10.1080/10910344.2023.2255238 . hal-04210302

**HAL Id: hal-04210302**

**<https://hal.science/hal-04210302v1>**

Submitted on 18 Sep 2023

**HAL** is a multi-disciplinary open access archive for the deposit and dissemination of scientific research documents, whether they are published or not. The documents may come from teaching and research institutions in France or abroad, or from public or private research centers.

L'archive ouverte pluridisciplinaire **HAL**, est destinée au dépôt et à la diffusion de documents scientifiques de niveau recherche, publiés ou non, émanant des établissements d'enseignement et de recherche français ou étrangers, des laboratoires publics ou privés.



Distributed under a Creative Commons Attribution - NonCommercial - NoDerivatives 4.0 International License

# **Investigation of in process temperature and tool wear for the machining of aeronautic aluminum under different lubrication conditions**

*Machining Science and Technology*

Bruno Lavisse<sup>a\*</sup> Xavier Tardif<sup>b</sup>, Dmitry Bondarenko<sup>c,d</sup>, Mathieu Ritou<sup>c</sup>, Guénaél  
Germain<sup>a</sup>

<sup>a</sup> Arts et Métiers ParisTech, LAMPA, 2 bd du Ronceray, 49035, Angers , France

<sup>b</sup> Institut de Recherche Technologique Jules Verne, Chemin du Chaffault, 44340 Bouguenais, France

<sup>c</sup> Nantes University, LS2N (UMR CNRS 6004), 1 Quai de Tourville, 44000 Nantes, France

<sup>d</sup> Hexagon Manufacturing Intelligence, 32 Avenue de la Baltique 91140 Villebon-sur-Yvette, France

*\* Corresponding author:*

B. Lavisse <sup>1</sup>Arts et Métiers ParisTech, LAMPA, 2 bd du Ronceray, 49035, Angers, CEDEX, France.  
Tel +33241207343 e-mail: [bruno.lavisse@ensam.eu](mailto:bruno.lavisse@ensam.eu)

# **Investigation of in process temperature and tool wear for the machining of aeronautic aluminum under different lubrication conditions**

The use of aluminum-lithium alloys in aeronautics is an efficient solution for light-weight structures, but its machinability can cause increased tool wear. The cutting temperature is one of the most important parameters controlling the tool wear and the quality of machined surfaces. Therefore, its measurement is of great interest to analyze the heat generation during the cut and then being able to limit it in the cutting edge.

This paper presents an original experimental study of the cutting temperature of two aluminum alloys (7000 series and Li-containing 2000 series), for dry, MQL and wet machining conditions. The interactions between tool wear and cutting temperature are also investigated. To be able to observe tool wear, the milling of very large volumes of aluminum alloys have been necessary, since tool lifetime is of several hours when machining this kind of material. To measure temperature as close as possible of the cutting zone, an original set-up with machinable thermocouples were used, enabling measurements on a large frequency bandwidth. Complementary investigations by SIMS revealed a diffusion of lithium in the cutting insert, which can reduce its lifetime (divided by 8, with the Li-containing 2000 series compared to the 7000 series).

Keywords: Cutting temperature, machinable thermocouples, tool wear, lubrication

## **1) Introduction**

In the industry, innovative aluminum alloys are developed such as aluminum-lithium. Indeed, they have very interesting properties such as lower density, high mechanical strength and high stiffness. However, the machining of these new alloys can lead to premature tool wear, compared to classical aluminum alloys. One solution consists in reducing the cutting conditions which results in lower productivity and quality.

The heat generation and the plastic deformation induced during machining affect the machined surface. In particular, the heat generated induces residual stresses, and activates the tool wear mechanisms. Therefore, it is of great interest to analyze and identify the heat generation during the milling of aluminum alloy for different lubrication conditions of lubrication.

Different studies have been conducted to determine cutting temperature when machining, particularly in turning.

A very common method is the use of a pyrometer or infrared camera to observe the contact between the tool and the workpiece. In that way, (Kuzcmaszewski et Zagòrski 2013) used data collected from thermal image sequence to analyze face milling of magnesium alloy. They observe that changing the cutting speed does not cause a significant increase of the temperature in the cutting area. Nevertheless, this method can entail dealing with inaccuracy due to changing emissivity coefficient and is inapplicable with lubricant.

Then a very reliable temperature measurement method in machining is the use of a thermocouple; either embedded in the workpiece, either in the tool depending if it is turning or milling. (Kerrigan et O'Donnell

2013) for example used a Wireless Tool-Integrated sensor (developed by ACTARUS) to measure temperature in CFRP Milling. The review of (Davies, et al. 2007) on the temperature measurement in material removal processes demonstrates a very good time resolution and a weak uncertainty for the thermocouple. (Kitagawa, Kubo et Maekawa 1997) provide quantitative data on tool temperature with increasing cutting speed and were interested in tool wear characteristics in high-speed machining from a thermal point of view. Measurements of cutting temperatures were made (by an embedded thermocouple in the tool) during intermittent turning a titanium disk, which was supposed to simulate a milling process. Thanks to this device, the authors observe that the maximum rake temperature is lower for intermittent cutting than for continuous cutting by approximately 15%. They also show that wet cutting led to a decrease in the maximum temperature and in the temperature in the non-cutting period in comparison to dry conditions.

However, temperature measurements during intermittent turning do not take into account the change in the chip thickness while cutting which occur in milling. That's why other authors such as (Hou, Zhao et Zhu 2011) used in their work an embedded thermocouple inside the workpiece to measure the temperature profile while face milling a magnesium alloy. During milling, the thermocouple is heated by the shear plane until the top of the thermocouple is cut off. Authors show that the temperature increases slightly when the cutting speed is less than 1507 m/min.

However, because only one part of the sensor is cut off during the milling, authors observe only 3°C of temperature rise. (Kesrikioğlu et Pfefferkorn 2018) also used embedded thermocouples in milling. To obtain a more precise temperature in the cutting edge, (Dewez, et al. 1999) propose a machinable thermocouple. The authors implant a suitable insulated thermocouple wire into a workpiece. When the workpiece is sheared during the machining process, the insulation is broken, and an instantaneous hot junction is formed between the wire and the workpiece material in the cutting zone. Thanks to this method, authors observe that temperature increased with cutting speed and no reduction at higher speeds occurred. Moreover, machining with a worn tool generated higher temperatures when using new tools. (Hirao 1989) with this method was able to determine the temperature distribution on the flank face of cutting tool. He demonstrated that with a small enough wire, very fast response time (about 100 kHz) may be reached. This machinable device is also very useful to measure temperature in the contact zone in grinding processes (Lefebvre, et al. 2012).

(Le Coz et Dudzinski 2014) also studied temperature variation in the workpiece and in the cutting tool when dry milling Inconel 718. A similar measurement method as (Dewez, et al. 1999) was employed. Indeed, a specially developed machinable thermocouple was used. The hot junction was realized by the action of the cutting edge. It consisted of two dissimilar thermocouple materials, iron and constantan, to form a standardized and calibrated J-type thermocouple combination insulated from the workpiece by using mica. During the cutting test, as soon as the cutting edge of the tool cut off the sensor, a smearing of one material upon the other was produced, creating a first hot junction of the thermocouple. This junction allowed the measurement of the temperature at the tool-workpiece interface. Authors also measured the subsurface temperature by using an embedded thermocouple. Then they defined what they called a gradient temperature from the surface to the subsurface. A large temperature gradient was observed from the surface to the subsurface, especially for the higher cutting speed values.

Because of the promising results of (Le Coz et Dudzinski 2014) the same type of machinable thermocouple was used in the present study. Therefore, the temperature in the contact area of a milling process was measured on two different aluminum alloys (a Li-containing 2000 series alloy and a 7000 series alloy). Firstly, a frequency analysis was performed to determine the contact time between the tool and the workpiece. Then temperature profiles for three different cooling conditions (dry, MQL and wet lubrication) and for different tool wear rates were analyzed. Finally, SIMS cartographies were done on the tool after machining Li-containing 2000 series to better understand the tool wear.

## 2) Experimental setup

### 2.1 Materials used

The sample was composed of two pieces of aluminum alloy of 100 mm height, 30 mm length and 200 mm width. 10 300 $\mu$ m section channels were machining in a lonely aluminum piece to insert thermocouples.

Two types of aluminum alloy A (Li-containing 2000 series alloy) and B (7000 series alloy) were used. The A alloy was slightly less dense than the B alloy (-5%) and it was also less able to evacuate the heat. Indeed at 20°C the thermal diffusivity of the B alloy was 50% higher than for the A alloy and 34% higher at 300°C.

### 2.2 Cutting conditions and temperature measurement

Table 1 present the cutting conditions that were chosen for the experiments. They are common ones in the High Speed Machining of aluminum alloys in the aeronautic industry (Wang, et al. 2020). Where  $a_e$  is the width of cut,  $a_p$  the depth of cut, N the spindle speed and  $f_z$  the feed per tooth.

**Table 1: Cutting conditions of the milling process**

$a_e$ (mm)	$a_p$ (mm)	N (rpm)	$f_z$ (mm/tooth)
30	5 mm	24 000	0.1

The machine-tool was a Huron KX30 equipped with a Fischer spindle MFW2310 (24kRPM, 70kW). The tool was a 40mm-diameter R4 bull-nose tool with 4 uncoated Kennametal inserts, which is typically used for rough milling operations in the aeronautic industry.

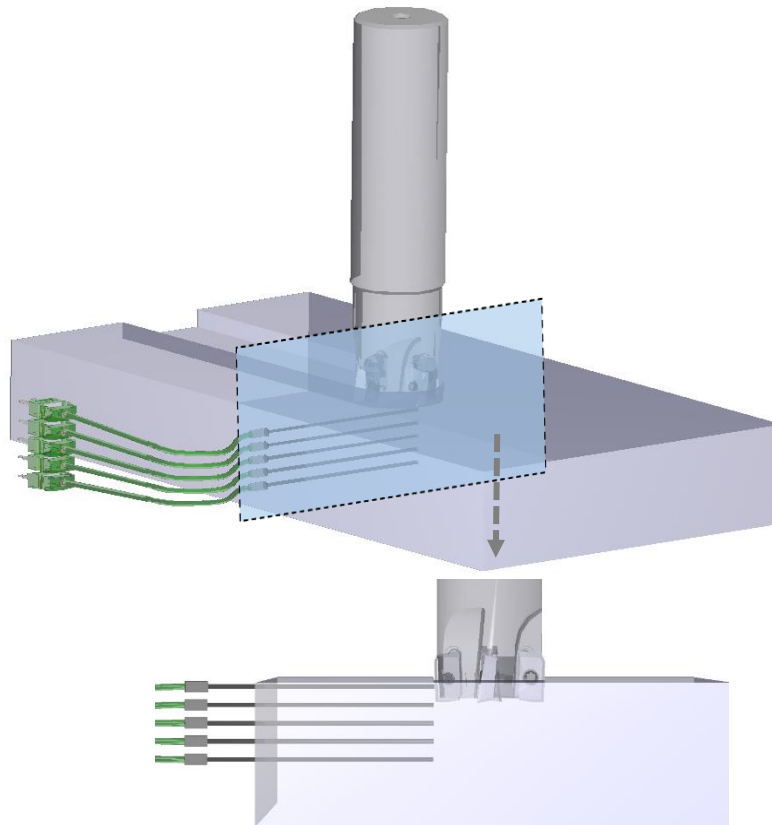
Experiments under different lubrication conditions were carried out: dry machining, wet machining and MQL machining. For the wet machining, a Blaser emulsion lubricant type was used. Moreover, all along the study, cutting conditions were identical. The stability of the cut has been verified during all the experiments, by vibration measurement with EmmaTools device (Godreau, et al. 2019)

An original setup for thermal measurement in milling was developed, as presented in Figure 1. The temperature of the aluminum sample was measured by a sequence of five thermocouples (K type) along the height of the workpiece. They were inserted in the sample perpendicularly to the toolpath (Figure 2). The first thermocouple was placed 3 mm below the top of the sample. The other thermocouples were separated by 5 mm between each other. The diameter of each wire of the thermocouples was 125  $\mu$ m and was surrounded by a 10  $\mu$ m isolating polyimide coating. The two wires of the thermocouples were twisted together in order to make the couple stiffer and to insert it properly in the channel of 300 $\mu$ m width and 300 $\mu$ m depth. The thermocouple channels were then filled by an electrically conductive paste and the thermocouples were then inserted in the channels.

The temperature was measured during the milling. Indeed, each time the tool is cutting the thermocouples a hot junction was created thanks to the contact between the tool and the two wires of the thermocouple. Therefore, the temperature was measured as close as possible to the surface of the

sample. The electrical contact between the two wires of the thermocouples was also guaranteed by the conductive paste. In this case, the conductive paste was considered as an isothermal intermediate media which does not influence the temperature measurement. This hypothesis was made by (Le Coz et Dudzinski 2014) and validated by the review of (Bhirud et Gawande 2017).

The temperature was studied during a pocket machining operation of the two aluminum alloys under three lubrication conditions: dry, wet or MQL. The pocket got a parallelepiped shape and corresponded to a metal removal of  $0.19 \text{ dm}^3$ . Several pockets were machined until respectively a 0.06 mm and a 0.2 mm VB tool flank wear. The effect of the tool wear on the temperature in the contact area was then investigated in the TC-instrumented sample, for its two wear levels VB of 0.06 and 0.2 mm.



**Figure 1: Temperature measurement set up. Schematic view of one face before milling**

The temperature recording was performed by an HBM quantum MX840 device. The sample frequency was 19200 Hz and a low-pass filter with a 2000 Hz cut-off frequency was applied. This cut-off frequency has been chosen in order to observe the teeth passing frequency at 1600 Hz. The recording of the temperature signal was triggered by a machine's signal to automate the measurement.

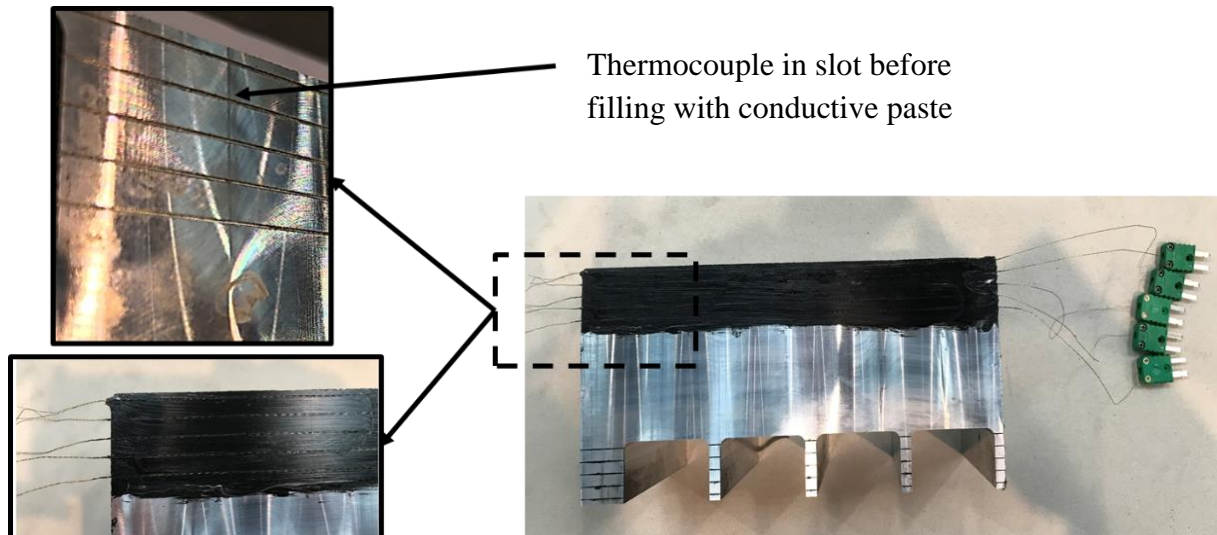


Figure 2: Experimental setup for thermal measurement

### 3) Results and Discussions

Based on the cutting conditions and tool dimension, the contact time  $t$  was determined and was 0.125s Eq1.

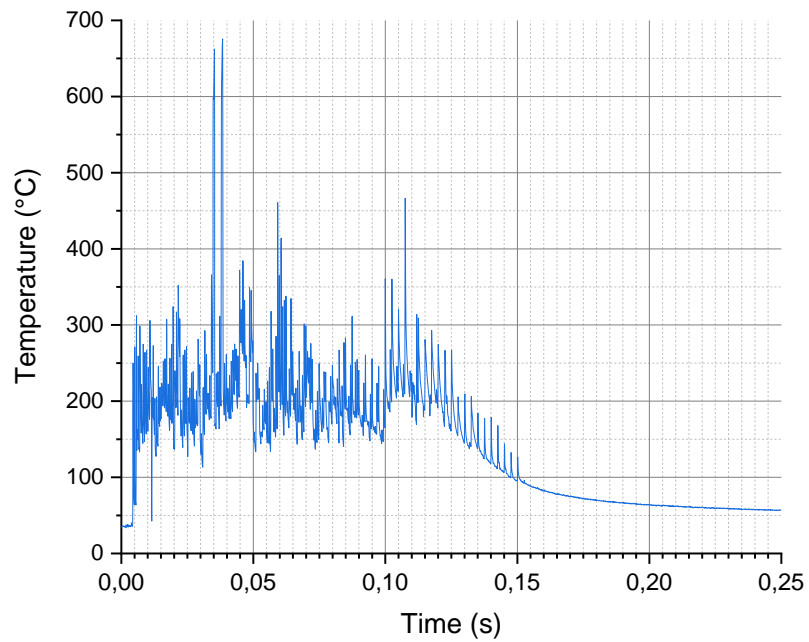
$$t = R_{tool} / (Z \cdot f_z \cdot f_s) \quad \text{Eq 1}$$

where:  $R_{tool}$  was the radius of the tool in mm,  $f_z$  the feed per tooth in mm,  $Z$  the number of teeth and  $f_s$  the spindle frequency with  $f_s = N/60$ .

The tooth passing frequency  $f_t$  was also calculated from Eq2 (1600 Hz in the cutting tests).

$$f_t = Z \cdot f_s \quad \text{Eq 2}$$

In the Figure 3 is an example of a temperature profile during a dry cutting path. Before the tool reaches the thermocouple, the temperature measured by the thermocouple is the sample temperature. When the tool reaches the thermocouple, the measured temperature increases very quickly, stays high, and finally decreases to the initial temperature. The measured temperature appears to be noisy (numbers of peaks can be seen in Figure 3), but a closer look at the evolution of temperature enabled the understanding of the occurrence of these peaks.



**Figure 3: Temperature profile of the dry machining of a 7000 series aluminum sample**

In the following parts, a frequency analysis was firstly made to link the obtained signal to the milling conditions. Then the signal has been processed in order to determine a coherent milling temperature and to be able to observe the effect of dry MQL and wet conditions on the tool wear in a thermal point of view.



### 3.1 Frequency analysis of the temperature profile

Figure 4 presents 3 different time windows (from Figure 3), in order to observe more accurately the evolution of the temperature during the machining of the toolpath. The temperature is plotted between 0s and 0.05s in the subgraph a; the temperature is the plotted between 0.05s and 0.1 s in the subgraph b; the temperature is finally plotted between 0.1s and 0.15 s in the subgraph c. The “noisy” appearance of the signal is due to temperature peaks, which seems to occur periodically (Figure 4).

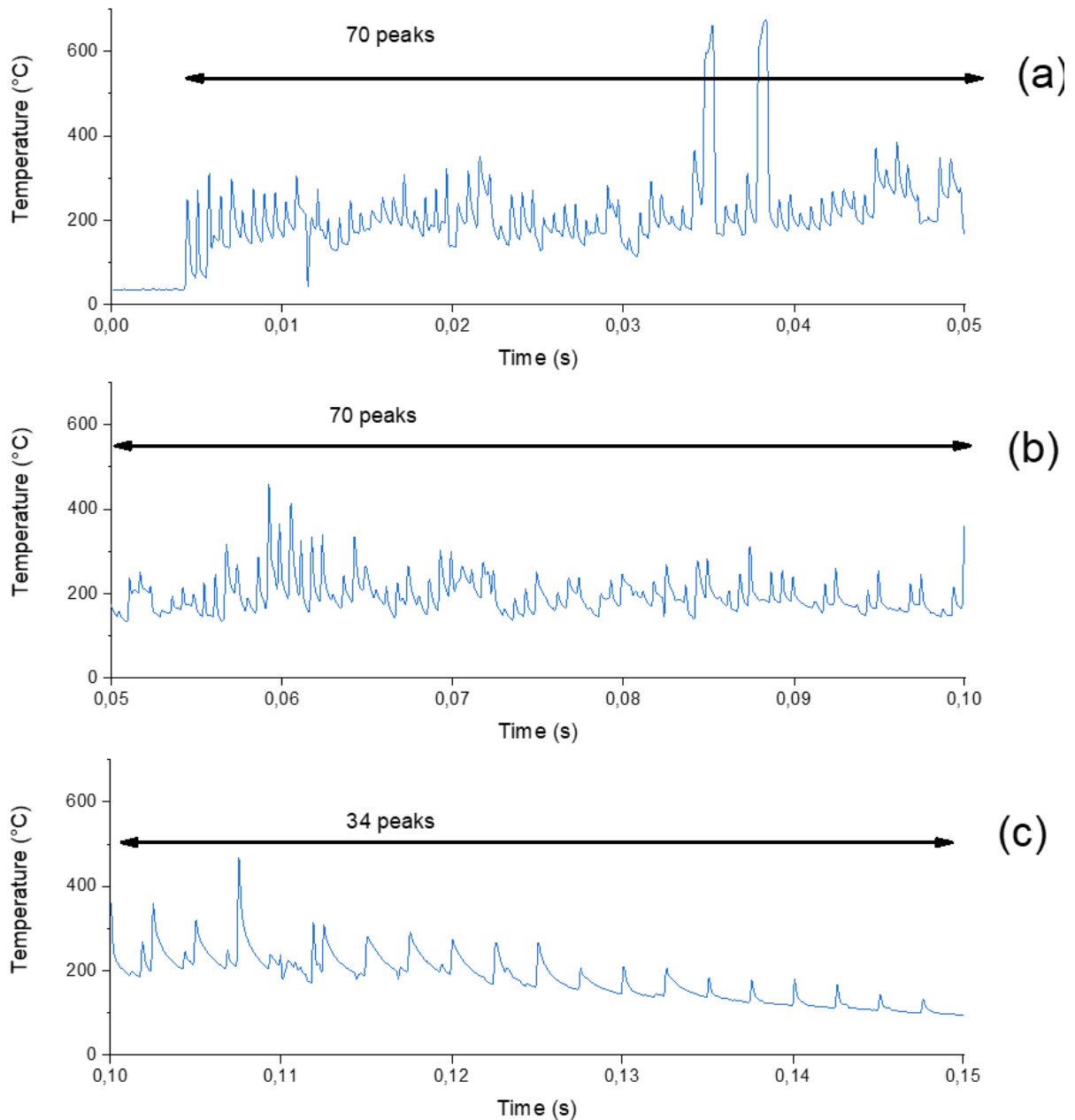


Figure 4: Temperature profile during dry milling divided into 3 parts (a, b, c)

Hence, the time between two peaks in Figure 5 has been measured. This Figure 6 presents the evolution of temperature between 0.085s and 0.095s. The temperature peaks are easily observable and the duration between two peaks is generally close to 0.65 ms, which corresponds to the tooth passing frequency at 1600 Hz. However, in some cases, this duration is significantly longer and corresponds to a 800 Hz frequency. These figures demonstrate that the peaks were due to the passing of the teeth of the cutting tool on the sensor. The higher frequency was related to the cutting frequency (4 teeth at 400 Hz). The lower frequencies at 400 Hz are explained by the slight differences in the radial eccentricity of the inserts of the tool, of which the largest one passes periodically at the spindle frequency  $f_s$  (Ritou, et al. 2014). Indeed, each insert cannot be mounted exactly in the radial position on the tool. The difference between one tooth and the next one may be of about 20 $\mu$ m. This difference had a very limited impact on the signal at the beginning of the measurement. However, at the end, when the thermocouple is almost perpendicular to the tool path, this is only the longer tooth which may cut the thermocouple. The other teeth are not long enough to touch the hot junction and to provoke any temperature peaks, the signal frequency is therefore 400 Hz.

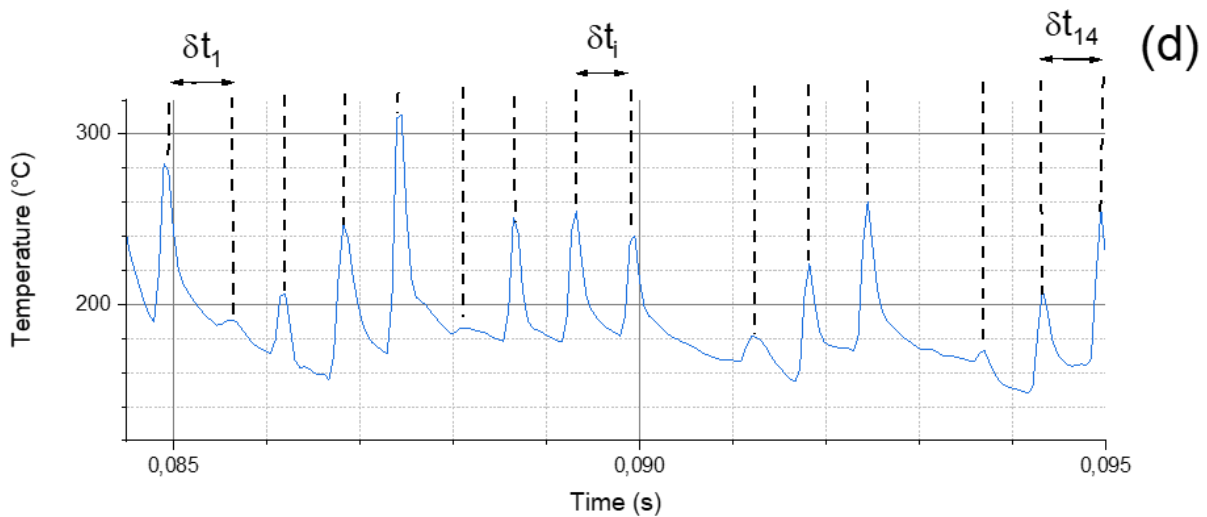


Figure 5: Temperature profile for dry machining (between 0.85s and 0.95s)

To confirm the relation between the teeth of the tool and the temperature peaks from the signal, a spectrum analysis was performed on the temperature signal thanks to an FFT algorithm. The Figure 6 presents the magnitude of the frequency spectrum of the temperature signal during the dry cut. The magnitude of signal is high at very low frequency (due to slow evolution of signal shape in Figure 3). Two contributions at 395 Hz and 1595 Hz are clearly noticeable, which corresponds respectively to the spindle frequency (400 Hz) and the tooth passing frequency (1600 Hz).

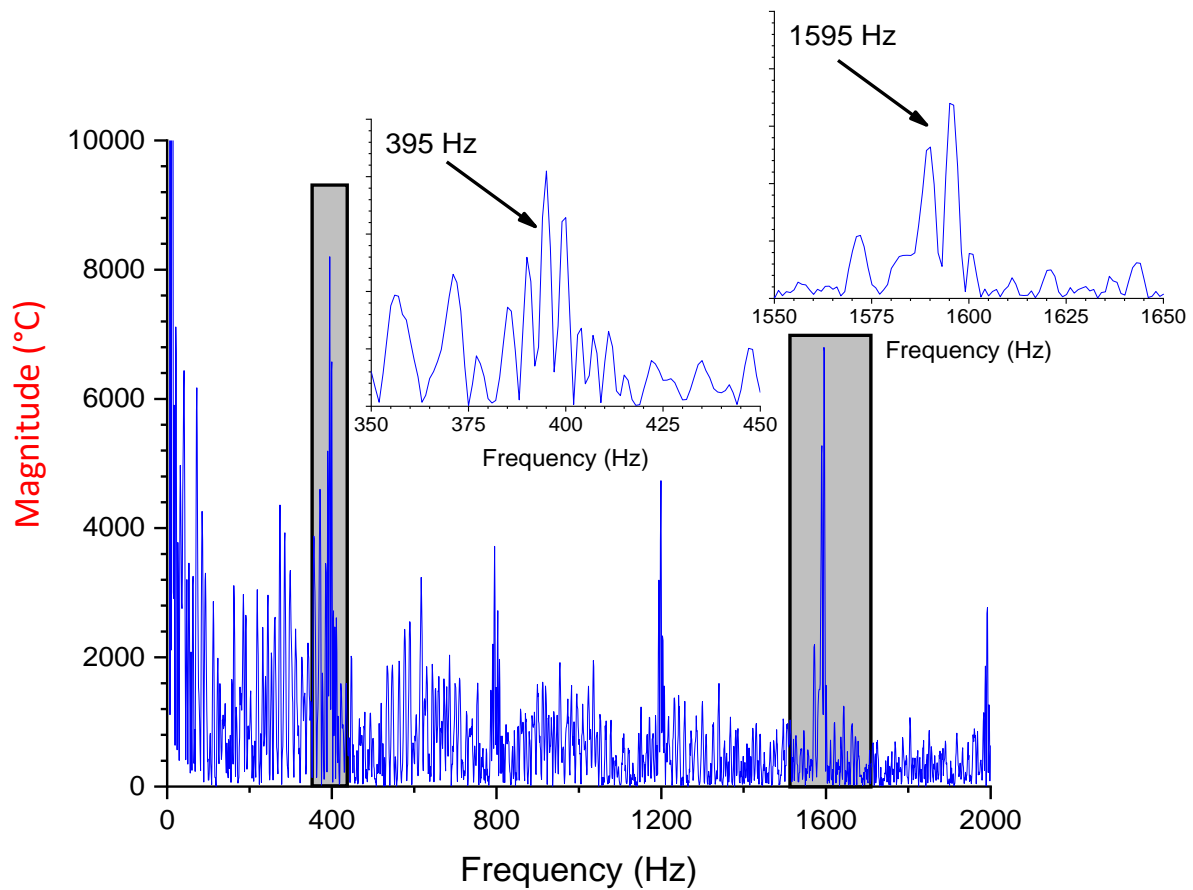


Figure 6: Frequency spectrum of the temperature during the toolpath

### 3.2 Signal processing and determination of the cutting temperature in the ending contact zone

The frequency analysis revealed a consistent relation between the cutting speed and the occurrence of temperature peaks. However, it was also essential to obtain a coherent workpiece temperature from these peaks.

In their work, (Le Coz et Dudzinski 2014) explained that during milling, as soon as the cutting edge of the tool cut the thermocouple, a first hot junction was created. As a result, the created junction allowed the measurement of the temperature at the tool-workpiece interface. The entire tool was moving linearly depending on the feed direction and on the feed per tooth amplitude. Then a succession of hot junctions was created until the last intersection of the tool at the final junction. The thermocouple observed a peak temperature when a tooth was crossing the sensor, then a decrease of temperature when the tooth was gone. These peaks successions were defining the gradient of temperature in the cutting edge. However, those temperature variations were very quick and occurred in the extreme surface of the sample. Indeed, in their work (Le Coz et Dudzinski 2014) with an embedded thermocouple sensor placed at only 0.5 mm of the contact zone were unable to observe the same variations. Therefore, these peaks seem to be related to a very quick localized heating which does not affect the workpiece integrity. To get rid of these peaks, in the grinding process, (Rowe, et al. 1995) defined the background temperature whose maximum must not overcome a threshold hereafter grinding burns will occur.

In this paper, the signal of the thermocouple was processed to obtain the background temperature in order to define the temperature profile absorbed by the workpiece. (Batako, Rowe et Morgan 2005) in

their study removed the temperature peaks after using a grindable thermocouple. To remove the temperature flashes (Lefebvre, et al. 2012) developed a method based on the finding of local minima inside the signal. In our study, we adapted this approach. Indeed, to process the raw signal, local minima was obtained by using a minimum filter, which replaced every value by the minimum value in the range of 10 neighborhoods. In order to avoid the measurement artefacts and to smooth the curve a median filter on a range of 10 data is then applied.

A comparison of raw data, the background temperature as defined by (Rowe, et al. 1995) and the local minimum is presented in the Figure 7. It shows a very good correlation (temperature difference  $<10^{\circ}\text{C}$ ) between the background temperature of the raw signal and the envelope curve. This method of determining the background temperature was used throughout our study. Since earlier studies found that the temperature distribution is very sensitive to filter parameters (Xu et Malkin 2001, Fang, Huang et Xu 2008), the same filter characteristics were kept constant for the analysis.

To compare each test the temperature at the end of the contact time was used. Considering the workpiece speed, the end of the contact was defined by averaging all the data of the background signal located between 0.115s and 0.135s (orange line on the Figure 7 after the beginning of the cutting.)

To enhance the chance to get a signal at the end of the contact and to minimize the variability of the results each temperature when machining a pocket (equal to the removed volume of  $0.19\text{dm}^3$ ) has been averaged over the five thermocouples measurements. This hypothesis was made since the measuring range of the 5 temperatures (given by the 5 thermocouples) was quite small (about  $10^{\circ}\text{C}$ ).

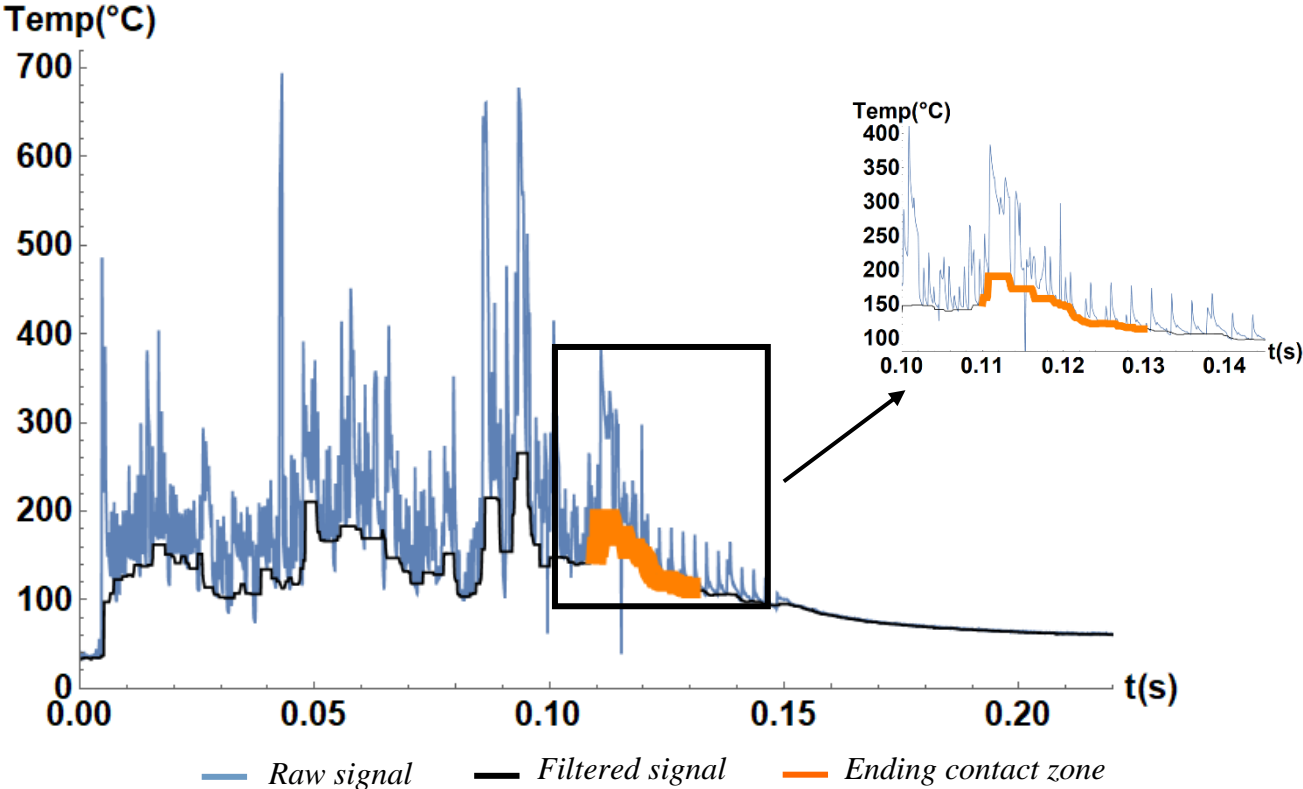


Figure 7: Background temperature profile of the dry cutting of a 7000 series sample

### 3.3 Cutting temperature in the ending contact zone after one path

The temperature in the ending contact zone for dry, MQL and wet conditions after machining of  $1.86 \cdot 10^{-1} \text{ dm}^3$  for the 2 aluminum alloys (7000 and Li-containing 2000 series) has been presented on the Figure 8. The obtained temperatures between 130°C and 210°C are consistent with the work of (Ming, et al. 2003).

It is interesting to point out that the 7000 series always present lower temperature than the Li-containing 2000 series. Indeed, for this last material, temperature is around 9-25% higher. It may be explained by the fact that the 7000 series has a higher thermal diffusivity than the Li-containing 2000 series (about 50% higher at 20°C as previously explained).

Moreover, as expected the wet conditions enabled the contact temperature to be decreased by more than 30% compared to the MQL. This observation applies for both the 7000 and Li containing 2000 series, as the presence of the coolant impacts the heat generation by reducing friction and by absorbing and removing heat from the cutting area thanks to the conduction and the cooling effects (Klocke et Eisenblätter 1997, Weinert, et al. 2004). For example, in their work (Kalidas, DeVor et Kapoor 2001) investigated the effect of drill coatings on hole quality under dry and wet cutting conditions. By using many thermocouples located at different positions inside the workpiece, they observed for every thermocouple temperatures 50% lower under wet conditions than under dry conditions. (Weinert, et al. 2004) explained in their work that the oil used in MQL mostly contributes to reducing friction and adhesion between the workpiece and the tool. However, in case of MQL the direct cooling effect of oil/air mix is of minor importance compared to full wet conditions. For these reasons, it made sense to observe only a little drop in the temperature by using MQL instead of dry conditions. Indeed, the drop of about 6% for the 7000 series and 7.5 % for the Li containing 2000 was outlined.

It was also observed that the difference between the 7000 series and Li containing 2000 series alloy in terms of contact temperature is strongly reduced under the wet conditions. It revealed that the ratio of heat flux absorbed by the workpiece out of the total cutting power is reduced thanks to the heat flux absorbed by the cutting fluid. Indeed, under the wet conditions the convection heat transfer coefficient may reach more than 100 kW/m<sup>2</sup>K while machining (Jin, Stephenson et Rowe 2003). We suppose that a large part of the heat is absorbed by the fluid under the wet conditions. The temperature in the tool – workpiece contact area is then stabilized and depends more on the boiling fluid temperature than on the heat properties of the machined material.

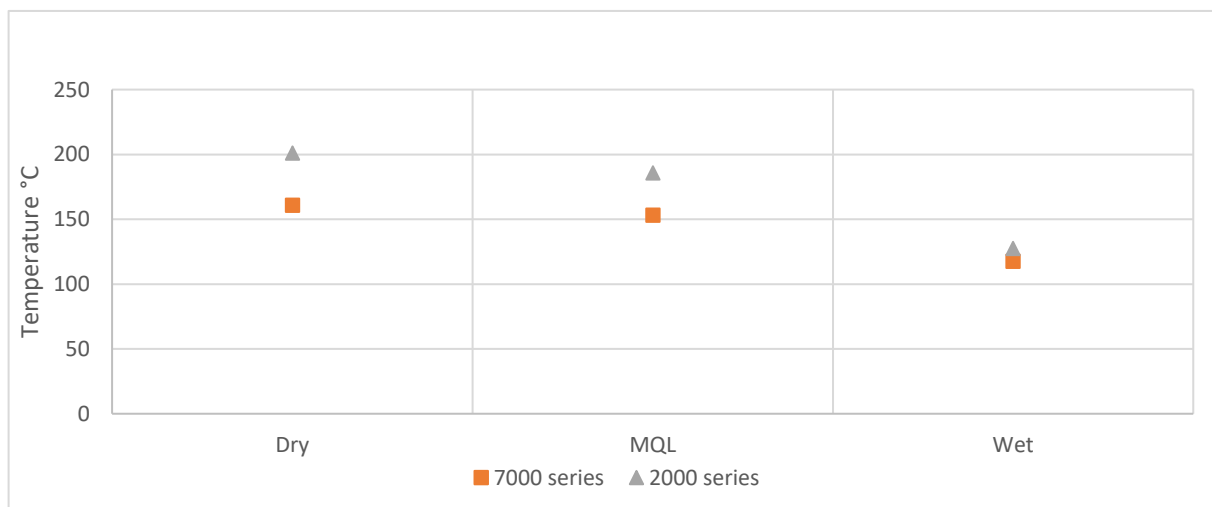


Figure 8: Temperature at the ending contact zone for dry, MQL and wet conditions on 7000 series and 2000 series samples

### 3.4 Tool wear effect on the cutting temperature

The effect of the tool wear was also studied, and the results are presented on the Figure 9. It is obtained that the rise in the machined volume has led to the growth of tool wear. The increase of the tool wear is also depended on the cutting and on the coolant conditions. As we can observe on the Figure 9, for the two aluminum alloys, that the dry conditions led to a quicker tool wear than with MQL or under wet conditions.

For the Li containing 2000 series scattered results were obtained under wet conditions (2000 Li- Wet 1 and 2000 Li wet 2 Figure 9). An average of these two series of results was considered for the following of the study.

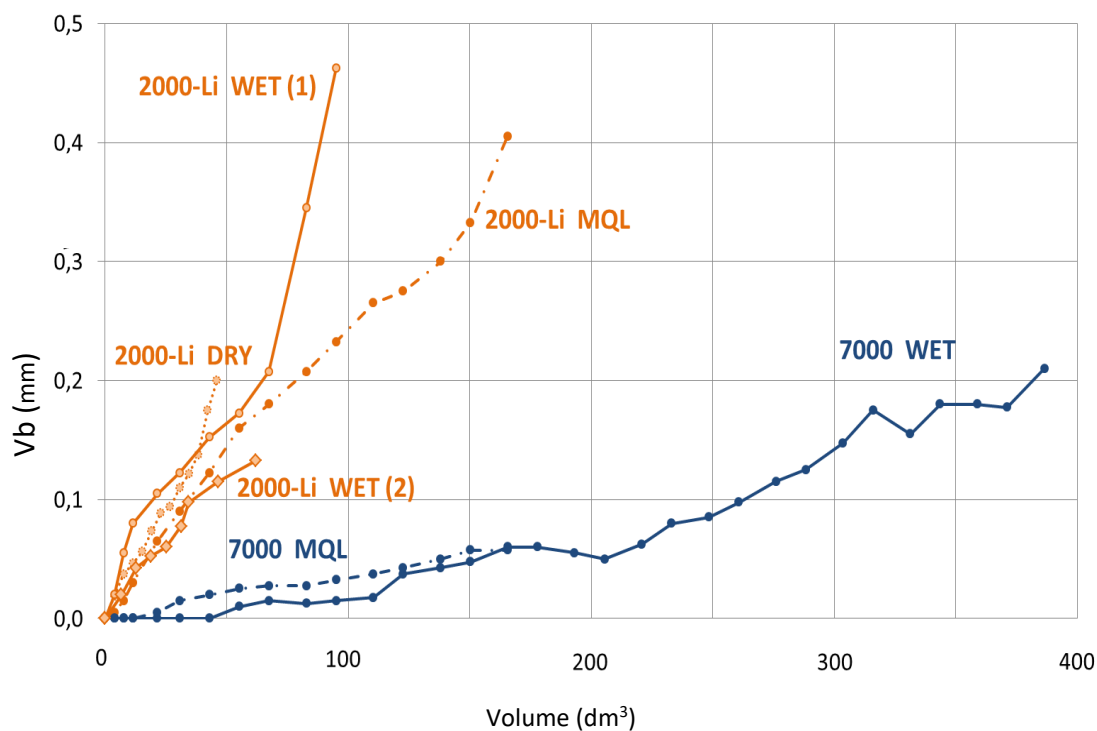


Figure 9: Evolution of tool wear, in relation to the lubrication conditions and the alloy

It is supposed to impact the temperature of the ending contact zone by contributing to the friction mechanism between the tool and the machined part. Thus, this temperature has been reported into the Figure 10 graph after machining each pocket ( $0.19 \text{ dm}^3$  of material removal). The Figure 10(a) presents the temperature on the 7000 series and the Figure 10(b) stands for the 2000 Li-containing series. On the Figure 10(a) the values corresponding to a 0.06 mm flank wear (for MQL and wet conditions) are highlighted and the Figure 10(b) illustrates the evolution of temperature for both 0.06 mm and 0.2 mm flank wear.

One can observe that the increase in the machined volume, which involves an increase in the tool cutting time and thus an increase in the tool wear, led to a gradual increase of the ending contact zone temperature. This behavior seems to be realistic for MQL and dry conditions on the 7000 and Li-containing 2000 series both. Indeed, the temperature passed from  $155^\circ\text{C}$  to  $195^\circ\text{C}$  for the 7000 series and from  $190^\circ\text{C}$  to  $270^\circ\text{C}$  for the 2000 series. This increase of temperature linked to the tool wear was also observed by (O'Sullivan et Cotterell 2001). They studied the effect of tool wear on the temperature

in single point turning and showed a 15% increase in the temperature between a sharp tool and a tool with 0.35 mm flank wear. They explained this phenomenon by the fact that when the tool was wearing there was an increase in the contact area at the tool chip and tool work interface due to the presence of the flank and crater wear mechanisms. The overall efficiency of the cutting process was therefore reduced and an excess of amount of energy was required to perform the cutting process. This excess of energy led to higher cutting forces and temperatures. Similar observation of raised temperature after tool wear was also detailed in many other studies (Young 1996, Ay et Yang 1998, Chu et Wallbank 1998). On the Figure 9, the evolution of the temperature is more substantial for Li-containing 2000 alloys under MQL and dry conditions (+80°C after 65 dm<sup>3</sup> removed) than for the 7000 alloys (+40°C after 65 dm<sup>3</sup> removed). (Young 1996) demonstrate that the tool wear phenomenon is strongly temperature dependent. Then as the machining of Li-containing 2000 series led to a higher milling temperature than the 7000 without any tool wear. This initial higher temperature will boost the increase of the tool wear after each pocket machining and will further increase the temperature.

At last, it was interesting to observe that under the wet conditions, the ending contact zone temperature was similar to the two alloys and was stable even after machining more than 1000 dm<sup>3</sup> (approximately 303 kg of metal removal). It is well known that the lubricant enables the tool wear to be reduced and its life expectancy to be improved (El-Hossainy 2001). Therefore, the first explanation to this no-increase in the temperature after a large number of machining was the ability of the coolant to avoid the tool wear.

However, to better understand the tool wear phenomenon on the ending contact zone temperature, the temperature for a given flank wear was investigated as shown with the Figure 10. On this Figure, the temperatures for the 7000 series under MQL and wet conditions after a 0.06 mm flank wear but also the temperature of the Li-containing 2000 series under dry MQL and wet conditions for the same flank wear were reported. It is important to explain that unfortunately we were unable to get any flank wear measurements for the 7000 series dry tests. Indeed, under this dry condition with this alloy a lot of chip adhesion (built up edge) was observed on the flank face and it was impossible to obtain a precise value of the flank wear with the adhered chip. This phenomenon is detailed by (List, et al. 2005) who observed a lot of adhesion after dry machining of an aluminum alloy. The considered flank wear is weak. However, it needed to remove about 150dm<sup>3</sup> and 200dm<sup>3</sup> for the MQL and wet conditions with the 7000 series to get the 0.06 mm flank wear (Figure 9). For material saving considerations, we were not able to get a bigger wear for the 7000 series MQL.

The temperature under MQL conditions was quasi similar after the same flank wear for the 7000 alloy and the 2000 (respectively 206°C for the first one and 202°C for the second). The same observation was done under wet conditions. Indeed, the ending contact zone temperature for the 7000 series was about 140°C and 130°C for the Li-containing 2000 series. We can deduce that even with a worn tool, a large amount of cooling (if we compare wet and MQL conditions) enabled to a large part of the heat in the cutting contact area to be evacuated. Therefore, for a limited tool wear, the trend of temperature increase related to greater tool flank wear was completely annihilated by the cooling efficiency of the lubricant. However, it was interesting to observe that the lubrication also enabled the tool wear for the Li-containing 2000 series to be limited. Indeed, under dry cutting conditions for this material, an amount of 18.6 dm<sup>3</sup> (about 53 kg) of metal was machined to get the 0.06 mm flank wear. And for the wet condition, it was possible to remove 6 dm<sup>3</sup> (17 kg) more before observing the same level of wear. Nevertheless, even with those wet conditions this volume removed for the Li-containing 2000 series for given flank wear is about ten times lower than with the 7000 series. However, a work on the lubricating condition (use of high-pressure jet for example) could certainly improve the tool life expectancy while machining the Li-containing 2000 series as in the study of (Ayed et Germain 2018).

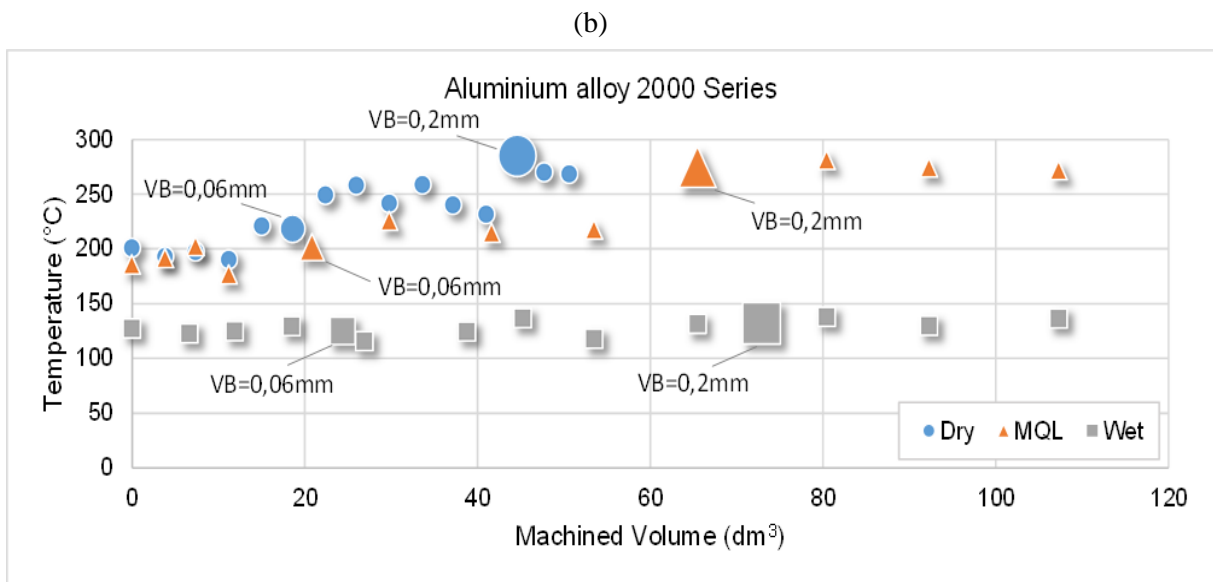
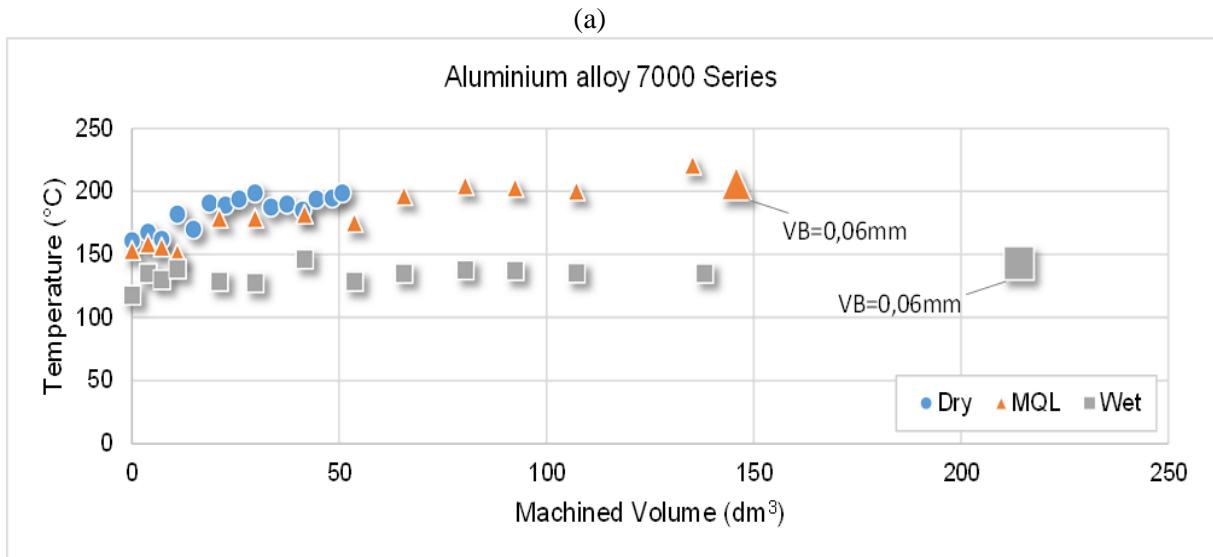


Figure 10: a) Evolution of the end milling temperature and the tool wear vs the volume removed in the 7000 series b) in the 2000 series



In order to analyze the effect of a more pronounced flank wear, end milling temperature of the Li-containing 2000 series after a 0.2 mm tool flank wear were reported in the Figure 11. As in Figure 10 temperature and volume removed are compared with the same flank wear under respectively dry, MQL and wet conditions.

For this wear there were no results for the 7000 series. Indeed, it was already noticed for a weak flank wear (0.06 mm) that about ten times more material removal was needed to get the same wear as with the Li-containing 2000 series (Figure 9). Then the same thing happened for a bigger wear, for example more than 270 dm<sup>3</sup> (760 kg) had to be removed for the 7000 under wet conditions just to get only 0.11 mm flank wear when 90 kg of the Li-containing 2000 series under wet conditions were sufficient for the same wear. For material saving reasons, it was therefore decided to study the bigger flank wear on the Li-containing 2000 alloy only, as shown with the Figure 11.

For the 0.2 mm wear, the observation is quite similar in terms of temperature: the amount of lubricant under MQL is not sufficient to substantially reduce the end milling temperature compared to dry conditions (275°C vs 285°C). However, the wet conditions enable the same temperature as with no wear to be obtained (140°C). Once again, it demonstrates that the ability of the coolant to evacuate heat is predominant compared to the rise in friction due to the tool wear. Then, it prevents any temperature runaway as long as the flank wear remains reasonable (<0.3 mm).

The observation that the lubrication improved the tool life expectancy for the Li-containing 2000 series is even more striking after a 0.2 mm flank wear. Indeed, passing from dry to MQL conditions enables a 50% increase in the volume of the alloy to be milled before reaching 0.2 mm tool wear. It was an only 20 % improvement between dry and MQL for the 0.06 mm flank wear.

In wet conditions, a volume of alloy removed 15% bigger than in MQL conditions is needed to get also 0.2 mm flank wear. This 15% increase was also observed for a 0.06 mm flank wear.

However, the big dispersion in the wet wear results (Figure 9) makes difficult to conclude to a real improvement of the wear reducing effect under wet conditions compared to MQL ones.

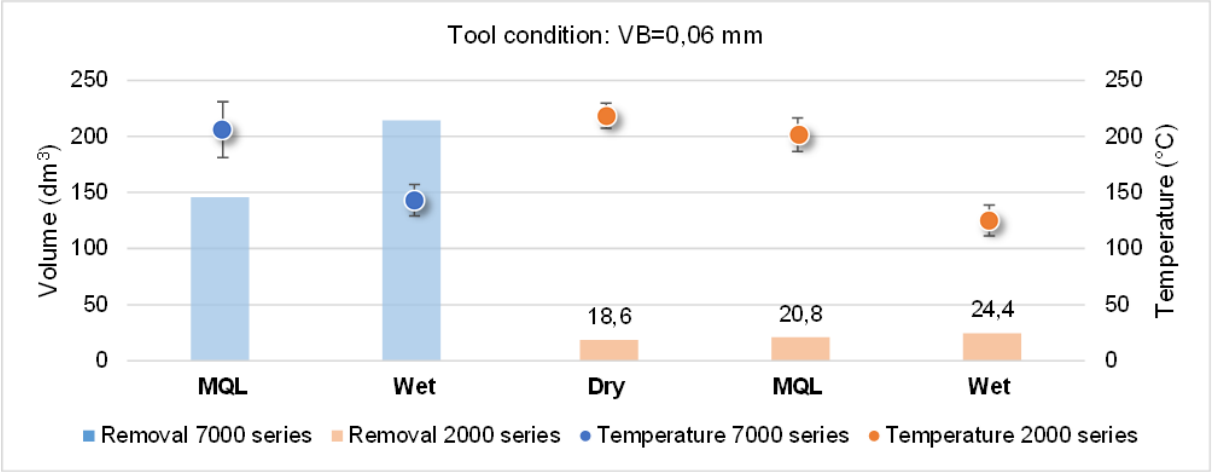


Figure 11: Cutting temperature (at the ending contact zone) and the corresponding volume of alloy removed for 0.06 mm flank wear

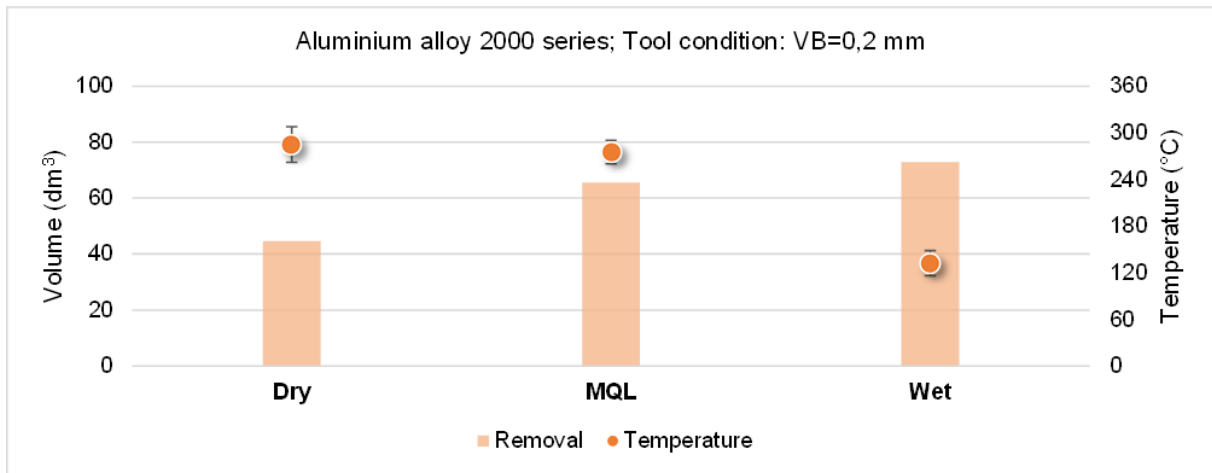


Figure 12: Cutting temperature (at the ending contact zone) and the corresponding volume of alloy removed for 0.2 mm flank wear

#### 4) Analysis of the cutting tool

In order to understand the important tool wear observed after machining Li containing 2000 alloy (under dry, MQL and wet conditions) compared with those after machining the 7000 series a SIMS (Second Ion Mass Spectroscopy) was done on the tool (Figure 13).

The target of this physicochemical technic was to make a qualitative analysis of the cutting tool, to detect the potential diffusion of the elements of the aluminum alloy or of the cutting tool (especially Li, Cu, Mg, W, Co and Cr). The detection was made from 10 ppm to hundreds of ppm.

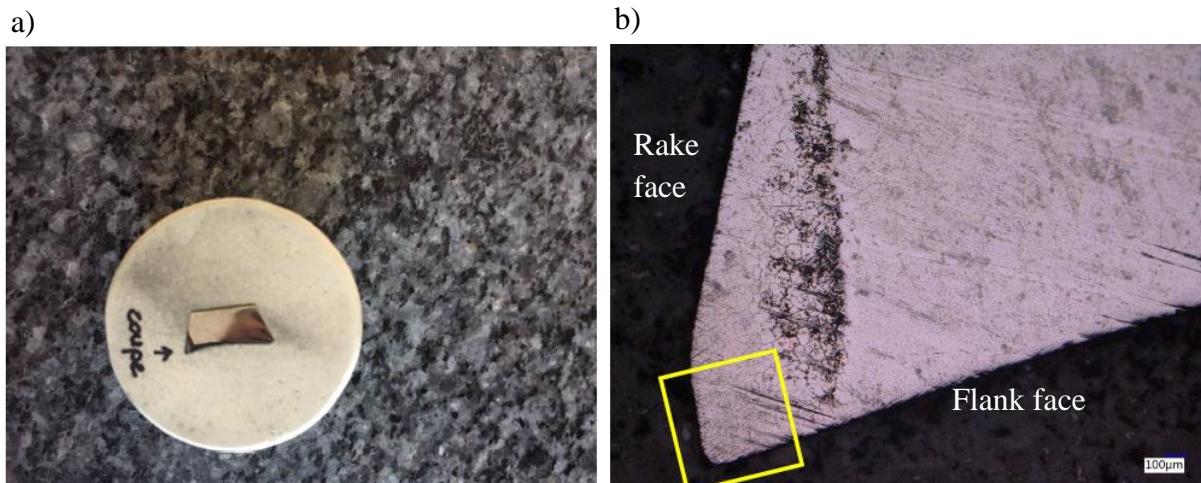


Figure 13: a) Picture of the slice of the carbide insert (cutting edge on the left) b) Cutting edge analyzed by SIMS (yellow square)

## ***Set-up conditions***

Instrumental measurements of SIMS:

- depth of measurements (100 nm to 500 $\mu$ m)
- electron beam (Bi keV)
- abrasion beam (Cs<sup>+</sup> for the negative polarity and O<sub>2</sub> for the positive polarity +)

A slice of the carbide insert was cut by wire EDM and polished. In Figure 13, the yellow square around the cutting edge was analyzed by SIMS. The dimension of the area was 500 $\mu$ m\*500 $\mu$ m with a lateral resolution of 2 $\mu$ m.

## ***Results***

The following significant ionic elements were investigated: Li<sup>+</sup>, C<sup>+</sup>, Mg<sup>+</sup>, Al<sup>+</sup>, V<sup>+</sup>, Cr<sup>+</sup>, Co<sup>+</sup> and W<sup>+</sup>. The Figure 14 displays the results for Li<sup>+</sup>, Mg<sup>+</sup>, and Al<sup>+</sup>, the major components of the alloy. (Figure 14).

The cutting insert is at the right-hand side of the 110  $\mu$ m abscissa. On its left, an adhesive layer of aluminum alloy is sticking on the cutting insert. It can be observed that there is no diffusion of Al or Mg (from the alloy), into the cutting tool. Peaks are due to some little impurities generated during the preparation of the sample. To the contrary, a diffusion of lithium inside the cutting tool is clearly observable (Figure 14 Li<sup>+</sup>). Indeed, the amount of lithium is high in a thin band where some aluminum alloy is sticking on the flank face of the cutting insert. Then it slowly decreases into the tool, which reveals a phenomenon of diffusion. The lithium is highly reactive during thermo-mechanical processing (Ahmad 1987). Therefore, during milling of Li-containing Aluminum alloy, a loss of lithium is often observed in the chip (Wagner, et al. 2016). For the other elements, no diffusion inside the tool was observed.

The diffusion of Li is activated by the thermo-mechanical loads occurring during the machining the Li-containing 2000 Aluminum alloy. The atoms that are diffused from the tool to the chip are carried away by the flow of work material along the tool surface (List, et al. 2005). The increasing flank wear and the atoms that are diffused from the chip to the tool deteriorate the tool surface finish. It leads to the occurrence of an adhesion layer and a build-up edge or to the formation of a crater on the tool. It may consequently lead to significant increase in the tool wear and a reduced tool lifetime

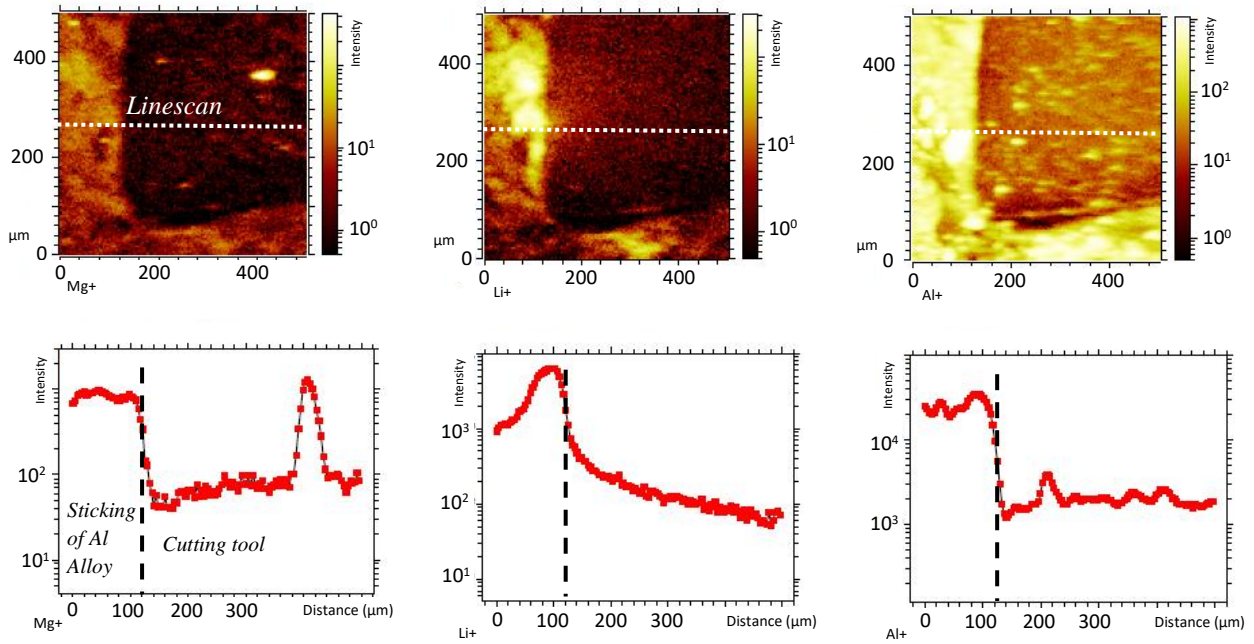


Figure 14: Chemical cartography and linescan ( $\text{Li}^+$ ,  $\text{Mg}^+$ , and  $\text{Al}^+$ ) in logarithmic scale

## 5) Conclusion

In this work, an experimental study of the milling temperature of two aluminum alloys (7000 series and Li-containing 2000 series) was made for dry, MQL and wet machining. In order to be able to observe the effect of the tool wear on the temperature, the milling of very large volumes of aluminum alloys has been necessary.

The original experimental device of temperature measurement (machinable thermocouples settled on a large frequency bandwidth) revealed, after a spectrum analysis, contributions at the tooth passing frequency.

The 7000 series, because of its better ability to conduct heat, presented lower cutting temperature in the ending contact zone than the Li-containing 2000 alloy. Indeed, under dry and MQL condition, the temperature was about  $150^\circ\text{C}$  versus  $190^\circ\text{C}$  for new uncoated inserts.

It was shown that tool wear has clearly an effect on the temperature for dry and MQL conditions. Indeed, for the two alloys, an increase of about 50% of the temperature was observed. However, for identical flank wear level, no difference of cutting temperature was noticed between the two alloys.

Wet condition provides the best results in terms of temperature. Indeed, with that lubrication condition, the cutting temperatures for the 7000 and Li-containing 2000 series were identical at about  $130^\circ\text{C}$  and were constant even after the machining of large volumes of material. The cooling effect of the lubricant was therefore predominant, compared to the increase of friction due to the tool flank wear. Moreover, the use of lubricant was clearly responsible for an increase of the tool lifetime. For a given level of flank wear, the volume of material removed was bigger under wet conditions than for dry conditions. Considering the scattered results obtained with the wet conditions in terms of tool wear, the difference observed with MQL conditions was not significant enough to conclude to an improvement in the tool life. However, for all lubrication conditions of our study, the tool flank wear appears earlier for the Li-containing 2000 alloy than for the 7000. Indeed, under wet conditions and despite similar cutting temperatures, the flank wear observed while machining a Li-containing 2000 series is still larger than while machining the 7000 series. The SIMS cartography revealed an important Li diffusion inside the

cutting tool after machining Li-containing 2000 series, which may be the source of the reduced lifetime of the tool.

On the contrary, MQL conditions (with quasi no effects on the contact temperature) led to a relatively similar decrease of the flank wear (compared to wet conditions). It demonstrates that these conditions are hardly less efficient than the wet one, whereas it is less expensive and more ecofriendly. Hence, it highlights the high potential of MQL for the machining of these aluminum alloys in industry.

## **6) Acknowledgement**

This study is part of the CUT project managed by IRT Jules Verne (French Institute in Research and Technology in Advanced Manufacturing Technologies for Composite, Metallic and Hybrid Structures). The authors wish to acknowledge the industrial and academic partners of this project, respectively Constellium, Europe Technologies, Capacités, Airbus, l'Université de Nantes and Arts et Métiers. We also would like to sincerely acknowledge Kevin DAUVERGNE, from Europe Technologies, for his great help during this study.

## 7) References

- Ahmad, M. "Thermal oxidation behavior of an Al-Li-Cu-Mg-Zr alloy." *Metallurgical and Materials Transactions A* 18 (1987): 681-689.
- Ay, H., and W. J. Yang. "Heat transfer and life of metal cutting tools in turning." *International Journal of Heat and Mass Transfer* 41 (1998): 613-623.
- Ayed, Y., and G. Germain. "High-pressure water-jet-assisted machining of Ti555-3 titanium alloy: investigation of tool wear mechanisms." *International Journal of Advanced Manufacturing Technology* 96 (2018): 845-856.
- Batako, A. D., W. B. Rowe, and M. N. Morgan. "Temperature measurement in high efficiency deep grinding." *International Journal of Machine Tools & Manufacture* 45 (2005): 1231-1245.
- Bhirud, N. L., and R. R. Gawande. "Measurement and prediction of cutting temperatures during dry milling: review and discussions." *Journal of the Brazilian Society of Mechanical Sciences and Engineering* 39 (2017): 5135–5158.
- Chu, T. H., and J. Wallbank. "Determination of the Temperature of a Machined Surface." *Journal of Manufacturing Science and Engineering* 120 (1998): 259-263.
- Davies, M. A., T. Ueda, R. M'Saoubi, B. Mullany, and A. L. Cooke. "On The Measurement of Temperature in Material Removal Processes." *CIRP Annals* 581-604, no. 56 (2007).
- Dewez, R. C., E. Ng, K. S. Chua, P. G. Newton, and D. K. Aspinwall. "Temperature measurement when high speed machining hardened mould/die steel." *Journal of Materials Processing Technology* 92-93 (1999): 293-301.
- El-Hossainy, T. M. "Tool wear monitoring under dry and wet machining." *Materials and Manufacturing Processes* 16 (2001): 165-176.
- Fang, C., H. Huang, and X. Xu. "The Influence of Thermocouples on the Measurement of Grinding Temperatures." *Key Engineering Materials* 375-376 (2008): 549-552.
- Godreau, V., M. Ritou, E. Chové, B. Furet, and D. Dumur. "Continuous improvement of HSM process by datamining." *Journal of Intelligent Manufacturing* 30 (2019): 2781-2788.
- Hirao, M. "Determining Temperature Distribution on Flank Face of Cutting Tool." *Journal of Materials Shaping Technology* 6 (1989): 143-148.
- Hou, J., N. Zhao, and S. Zhu. "Influence of Cutting Speed on Flank Temperature during Face Milling of Magnesium Alloy." *Materials and Manufacturing Processes* 26 (2011): 1059-1063.
- Jin, T., D. J. Stephenson, and W. B. Rowe. "Estimation of the Convection Heat transfer Coefficient of Coolant within the Grinding Zone." *Journal of Engineering Manufacture* 217 (2003): 397-407.

- Kalidas, S., R. E. DeVor, and S. G. Kapoor. "Experimental investigation of the effect of drill coatings on hole quality under dry and wet drilling conditions." *Surface and Coatings Technology* 148 (2001): 117-128.
- Kerrigan, K., and G. O'Donnell. "Temperature Measurement in CFRP Milling Using a Wireless Tool-Integrated Process Monitoring Sensor." *International Journal of Automation Technology* 6 (2013): 742-750.
- Kesrikioğlu, S., and F. E. Pfefferkorn. "Real time temperature measurement with embedded thin-film." *Procedia CIRP* 77 (2018): 618-621.
- Kitagawa, T., A. Kubo, and K. Maekawa. "Temperature and wear of cutting tools in high-speed machining of Incone1718 and Ti-6Al-6V-2Sn." *Wear* 202 (1997): 142-148.
- Klocke, F., and G. Eisenblätter. "Dry Cutting." *CIRP Annals* 46 (1997): 519-526.
- Kuzcmaszewski, J., and I. Zagórski. "Methodological problems of temperature measurement in the cutting area during milling magnesium alloys." *Management and Production Engineering Review* 4 (2013): 26-33.
- Le Coz, Gael, and D. Dudzinski. "Temperature variation in the workpiece and in the cutting." *International Journal of Advanced Manufacturing Technology* 74 (2014): 1133-1139.
- Lefebvre, A., F. Lanzetta, P. Lipinski, and A. A. Torrance. "Measurement of grinding temperatures using a foil/workpiece thermocouple." *International Journal of Machine Tools & Manufacture* 58 (2012): 1-10.
- List, G., et al. "Wear behaviour of cemented carbide tools in dry machining of aluminium alloy." *Wear* 259 (2005): 1177-1189.
- Ming, C., S. Fanghong, W. Haili, Y. Renwei, Q. Zhenghong, and Z. Shuqiao. "Experimental research on the dynamic characteristics of the cutting temperature in the process of high-speed milling." *Journal of Materials Processing Technology* 138 (2003): 468-471.
- O'Sullivan, D., and M. Cotterell. "Temperature measurement in single point turning." *Journal of Material Processing Technology* 118 (2001): 301-308.
- Ritou, M., S. Garnier, B. Furet, and J. Y. Hascoet. "Angular approach combined to mechanical model for tool breakage detection by eddy current sensors." *Mechanical System and Signal Processing* 44 (2014): 211-220.
- Rowe, W. B., S. C. Black, B. Mills, H. S. Qi, and M. N. Morgan. "Experimental Investigation of Heat Transfer in Grinding." *CIRP Annals* 44 (1995): 329-332.
- Wagner, V., A. Vissio, E. Duc, and M. Pijolat. "Relationship between cutting conditions and chips morphology during milling of aluminium Al-2050." *International Journal of Advanced Manufacturing Technology* 82 (2016): 1881-1897.
- Wang, Z., M. Ritou, C. Da Cunha, and B. Furet. "Contextual classification for smart machining based on unsupervised machine learning by Gaussian mixture model." *International Journal of Computer Integrated Manufacturing*, 2020: 1042-1054.

Weinert, K., I. Inasaki, J. W. Sutherland, and T. Wakabayashi. "Dry Machining and Minimum Quantity Lubrication." *CIRP Annals* 53 (2004): 511-537.

Xu, X., and S. Malkin. "Comparison of Methods to Measure Grinding Temperatures." *Journal of Manufacturing Science and Engineering* 123 (2001): 191-195.

Young, H. T. "Cutting temperature response to flank wear." *Wear* 201 (1996): 117-120.