



HAL
open science

Microdroplet Approach for Measuring Aqueous Solubility and Nucleation Kinetics of a Metastable Polymorph: The case of KDP Phase IV

Ruel Cedeno, Romain Grossier, Nadine Candoni, Stéphane Veessler

► **To cite this version:**

Ruel Cedeno, Romain Grossier, Nadine Candoni, Stéphane Veessler. Microdroplet Approach for Measuring Aqueous Solubility and Nucleation Kinetics of a Metastable Polymorph: The case of KDP Phase IV. *Crystal Growth & Design*, In press. hal-04206235v2

HAL Id: hal-04206235

<https://hal.science/hal-04206235v2>

Submitted on 6 Nov 2023

HAL is a multi-disciplinary open access archive for the deposit and dissemination of scientific research documents, whether they are published or not. The documents may come from teaching and research institutions in France or abroad, or from public or private research centers.

L'archive ouverte pluridisciplinaire **HAL**, est destinée au dépôt et à la diffusion de documents scientifiques de niveau recherche, publiés ou non, émanant des établissements d'enseignement et de recherche français ou étrangers, des laboratoires publics ou privés.

Microdroplet Approach for Measuring Aqueous Solubility and Nucleation Kinetics of a Metastable Polymorph: The case of KDP Phase IV

Ruel Cedeno¹, Romain Grossier¹, Nadine Candoni¹, Stéphane Veessler^{1*}

¹CNRS, Aix-Marseille Université, CINaM (Centre Interdisciplinaire de Nanosciences de Marseille), Campus de Luminy, Case 913, F-13288 Marseille Cedex 09, France

Abstract

Solubility and interfacial energy are two fundamental parameters underlying the competitive nucleation of polymorphs. However, solubility measurement of metastable phases comes with a risk of solvent-mediated transformations which can render the results unreliable. In this work, we present a rapid microfluidic technique for measuring aqueous solubility of the metastable form using KDP Phase IV as a model system. This bracketing approach involves analyzing the dissolution behavior of crystals in contact with supersaturated microdroplets generated via evaporation. Then, with the help of our recently developed nucleation time measurement technique, together with Mersmann calculation of interfacial energies from solubilities, we were able to access the interfacial energies of both metastable and stable phases. To gain further insights into the observed nucleation behavior, we employed the Classical Nucleation Theory (CNT) to model the competition of polymorphs using our measured solubility and calculated interfacial energies. The results show that the stable form is favored at lower supersaturation while the metastable form is favored at higher supersaturation, in good agreement with our observations and experimental reports in the literature. Overall, our microfluidic approach allows access to unprecedentedly deep levels of supersaturation and reveals an interesting interplay between thermodynamics and kinetics in polymorphic nucleation. The experimental methods and insights presented herein can be of great interest, notably in the mineral processing and pharmaceutical industry.

INTRODUCTION

The solubility of metastable polymorphs with respect to the stable form is important information required in quantifying the kinetics of competitive polymorphic nucleation. However, obtaining the solubility of the metastable phases can be challenging due to the risk of solvent-mediated transformation during measurement. This is the case for potassium dihydrogen phosphate (KH_2PO_4 or KDP), one of the most important optoelectronic materials.¹ While its tetragonal polymorph (Phase II, $I\bar{4}2d$) is the most stable at ambient conditions, KDP can crystallize in several polymorphic forms depending on temperature and pressure.² Recently, the high pressure monoclinic polymorph (Phase IV, $P2_1c$) that is usually accessible at 1.6 GPa has been crystallized at ambient conditions. This was achieved by carefully eliminating impurities and potential heterogeneous nucleation sites such as in specially-treated glass¹ or in levitating droplets.³ Moreover, KDP Phase IV has been shown to have interesting optical properties.¹ However, due to the lack of solubility data for Phase IV, there has been no quantitative studies on its nucleation barrier in comparison with the stable tetragonal Phase II. Indeed, the solubility of the metastable polymorph in water is difficult to measure using conventional methods⁴ because it readily converts to the stable tetragonal Phase II form upon contact with moisture.⁵ As a result, the interfacial energies governing the competitive nucleation kinetics of the metastable and stable polymorphs are currently lacking.

In this work, we report a rapid microdroplet approach to estimate the ambient aqueous solubility of the metastable Phase IV KDP. This involves analyzing the dissolution behavior of crystals of the metastable

phase in contact with supersaturated microdroplets, with respect to the stable phase, generated via evaporation. Moreover, with the help of our measured solubility and classical nucleation theory, we calculated its interfacial energy by employing our recently-developed microdroplet-based nucleation measurement technique.⁶ Furthermore, upon applying the empirical correlation of Mersmann⁷ between solubility and interfacial energy, we analyze the interplay of thermodynamics and kinetics in the competitive nucleation of the metastable and stable polymorph. Our investigation on KDP polymorphs reveal interesting insights into the competitive nucleation of stable and metastable crystals.

MATERIALS AND METHODS

Solubility Measurement. The schematic diagram of the setup is shown in **Figure 1a**. Given that the solubility of the metastable polymorph is higher than that of the stable polymorph, the solution that would equilibrate with the metastable polymorph must be supersaturated with respect to the stable polymorph. To generate supersaturated solutions while avoiding the nucleation of the stable polymorph, we took advantage of the long nucleation times in microdroplets (i.e. nucleation time is inversely proportional to volume). To ensure that the evaporation rate is slow enough to reach quasi-equilibrium, we submerged the microdroplets in an oil bath (0.8 mm layer of PDMS 10 cSt). For perspective, sessile microdroplets (2-3 nL) in air would evaporate within few seconds while those under oil would take several hours (see Figure S1 of SI). As shown in our previous work,⁸ such a system maintains a uniform concentration distribution in the microdroplet, i.e. Peclet number $\ll 1$.

To obtain the supersaturated droplet in Figure 1, we prepared a saturated solution ex-situ by equilibrating it with the powder for at least 2 days. Then, we injected the saturated solution to the motorized micropipette which was used to generate the saturated microdroplets under the PDMS oil. Given that water is marginally soluble in oil, the water from the microdroplet can diffuse (evaporate) through the oil, resulting in a supersaturated microdroplet (and our prior studies suggest that the salt ions do not diffuse through the oil). As the initially saturated microdroplet evaporates, the supersaturation S (i.e. c/c_{sat} where c_{sat} is the saturation concentration) slowly increases. Consequently, different supersaturation levels can be achieved by varying the evaporation time. The supersaturation ratio S is calculated from the ratio of the volume with respect to the initial volume, measured from the lateral optical images. The metastable crystal is then brought in contact with the supersaturated microdroplet using a microcapillary to observe its dissolution/growth behavior. For any given supersaturation S , if the crystal dissolves, solubility $> S_{dissolve}$; conversely, if the crystal grows, then the solubility $< S_{grow}$. The procedure is done for several incremental supersaturation levels until a reasonable precision is achieved on the lower and upper bound of solubility, i.e. $S_{dissolve} < \text{solubility} < S_{grow}$.

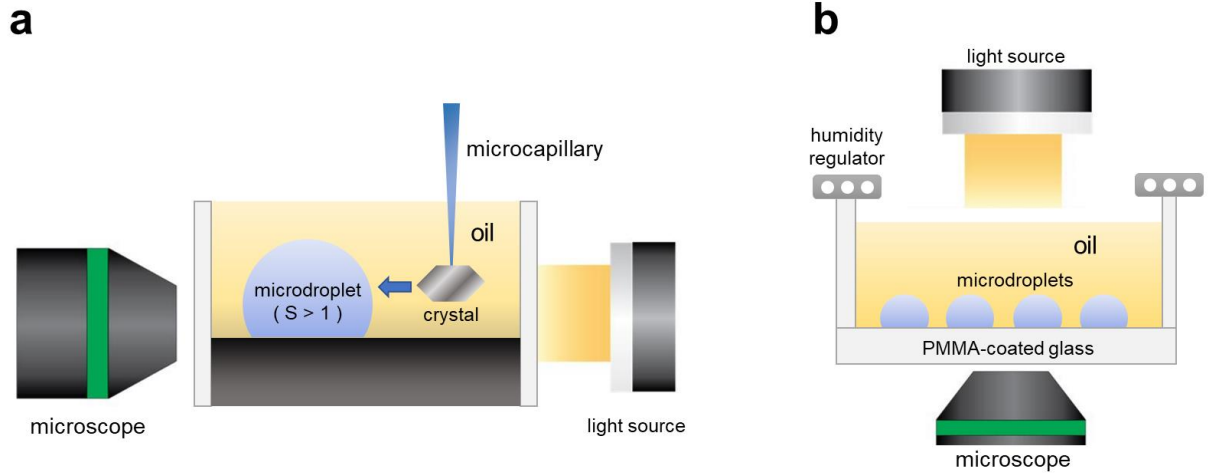


Figure 1. (a) Schematic diagram of solubility measurement. Supersaturation is achieved via evaporation starting from initially saturated microdroplet. The dissolution behavior of the metastable crystal when brought in contact with the supersaturated microdroplet is probed by lateral imaging (b) Schematic diagram of the interfacial energy measurement in which the probability distribution of nucleation times is obtained from hundreds of droplets via image analysis.⁹ (Figure adapted from Ref.¹⁰)

Nucleation time and interfacial energy measurement. The schematic diagram of the setup is shown in **Figure 1b** based on a previously reported experiment protocol in Ref⁶. However, unlike NaCl that dissolves upon exposure to humidity (RH > 75%), KDP does not absorb enough moisture to undergo deliquescence, preventing the use of the RH cycling technique. Thus, we modify the procedure by generating initially saturated microdroplets (i.e. saturation time = 0). This is done at RH close to 100% to minimize possible evaporation during microdroplet generation. Once the desired number of microdroplets are generated, the RH is lowered to 10%, causing the droplets to evaporate and eventually nucleate. Using our tailor-made evaporation model¹⁰, the supersaturation ratio of the microdroplets can be obtained as a function of time. Then, we employed the inhomogeneous Poisson distribution coupled with classical nucleation theory to extract the interfacial energy from the probability distribution of nucleation times which can be written as

$$P(t) = 1 - \exp \left[- \int_{t_{sat}}^{t_{nuc}} J(t)V(t)dt \right] \quad (1)$$

with $P(t)$ as the fraction of microdroplets nucleated after time t , $V(t)$ droplet volume at time t , t_{sat} time at which the microdroplet becomes saturated and t_{nuc} nucleation time.

For the primary nucleation rate $J(t)$, we used the classical nucleation theory (CNT) as

$$J(t) = A \exp \left[-\frac{16\pi}{3} \frac{\gamma_{eff}^3}{\rho_s^2 (k_b T)^3 \ln^2 S(t)} \right] \quad (2)$$

where A is the pre-exponential factor, γ_{eff} is the effective interfacial energy, ρ_s is the number density of formula units in the solid ($1.04 \times 10^{28} \text{ m}^{-3}$ for KDP), $k_b T$ is the thermal energy, $S(t)$ is the supersaturation expressed as the ratio of concentrations (concentration at nucleation / concentration at saturation) at nucleation at time t (more details in Ref⁸).

RESULTS AND DISCUSSION

In a separate preliminary experiment, we have observed that the crystal nucleated from microdroplet dissolves in the presence of the stable crystal (see Video 1 of SI), suggesting the formation of a more soluble metastable phase. To identify this phase, we characterized the crystals using powder X-ray diffraction (PXRD) and compared it with the simulated patterns of known polymorphs. The result is shown in **Figure 2a** which indicates a match between our crystals and the KDP Phase IV of Ren et al.¹ While the Phase IV crystallized at high pressure (1.6 GPa) has been observed to transform to Phase I upon pressure release,² our Phase IV from microdroplets remain stable at ambient pressures as evidenced by the absence of Phase I peaks. This is also in agreement with Ren et al.¹ The SEM image of the Phase IV shown in **Figure 2b** also reveals a crystal habit that is different from the stable tetragonal phase II polymorph which exhibits both prismatic and pyramidal facets corresponding to the (100) and (101) planes respectively.¹¹

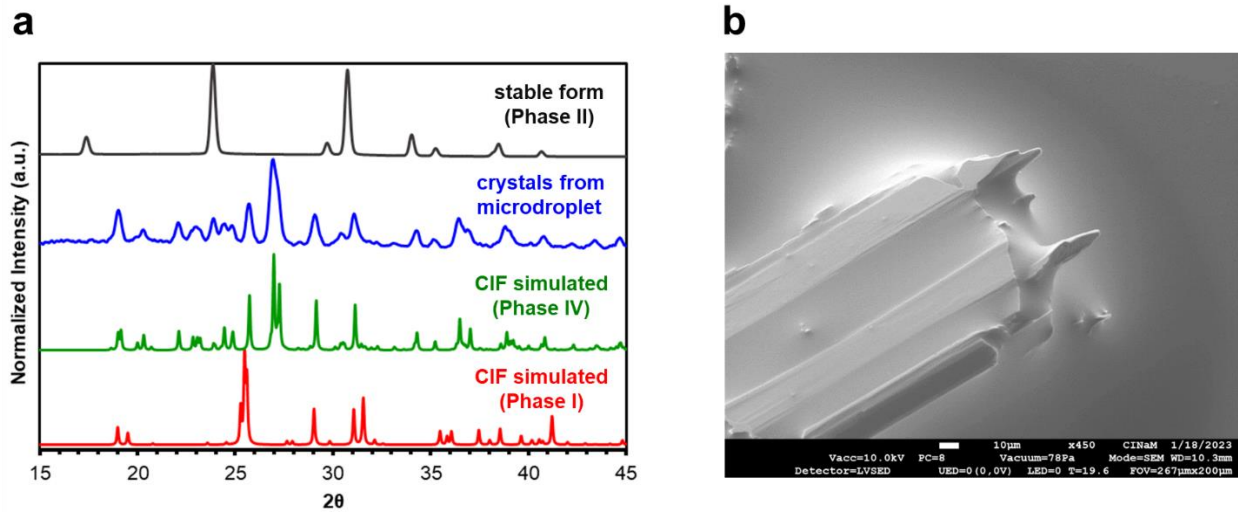


Figure 2. (a) Powder X-ray diffraction pattern of the commercially available stable tetragonal polymorph (black), crystals obtained from microdroplet (blue), and the CIF simulated patterns of Phase IV (green) and Phase I (red) polymorphs (b) SEM image of the crystal from microdroplet

Having confirmed the formation of KDP Phase IV, we proceed by investigating its aqueous solubility. Note that the solubility is required in evaluating its supersaturation ratio and in turn, its associated nucleation free energy barrier. However, aqueous solubility measurement of a metastable form is technically difficult, especially in the case of KDP which has been shown to undergo transformation to the stable

Phase II in the presence of moisture.⁵ Consequently, the risk of polymorphic transformation during measurement would render the conventional techniques unreliable. To address this, we report the use of a simple approach to rapidly estimate the solubility of the metastable form. This approach takes advantage of microdroplets evaporating in oil wherein (1) highly supersaturated states can be achieved without premature nucleation of the stable form (2) uniform concentration distribution is achieved, i.e. Peclet number $\ll 1$, (3) slow evaporation permits sufficient crystal-solution equilibration.

To demonstrate this approach, the snapshots of the solubility measurement in shown in **Figure 3** (corresponding videos 2-4 available in SI). Notice that at supersaturation ratio $S = 1.5$, the metastable crystal dissolved upon contact with the microdroplet. In contrast, at $S = 2.5$, the crystal grew. This suggests that the solubility of phase IV lies between 1.5 and 2.5. We then tested several values within this range and the results are displayed in **Table 1**.

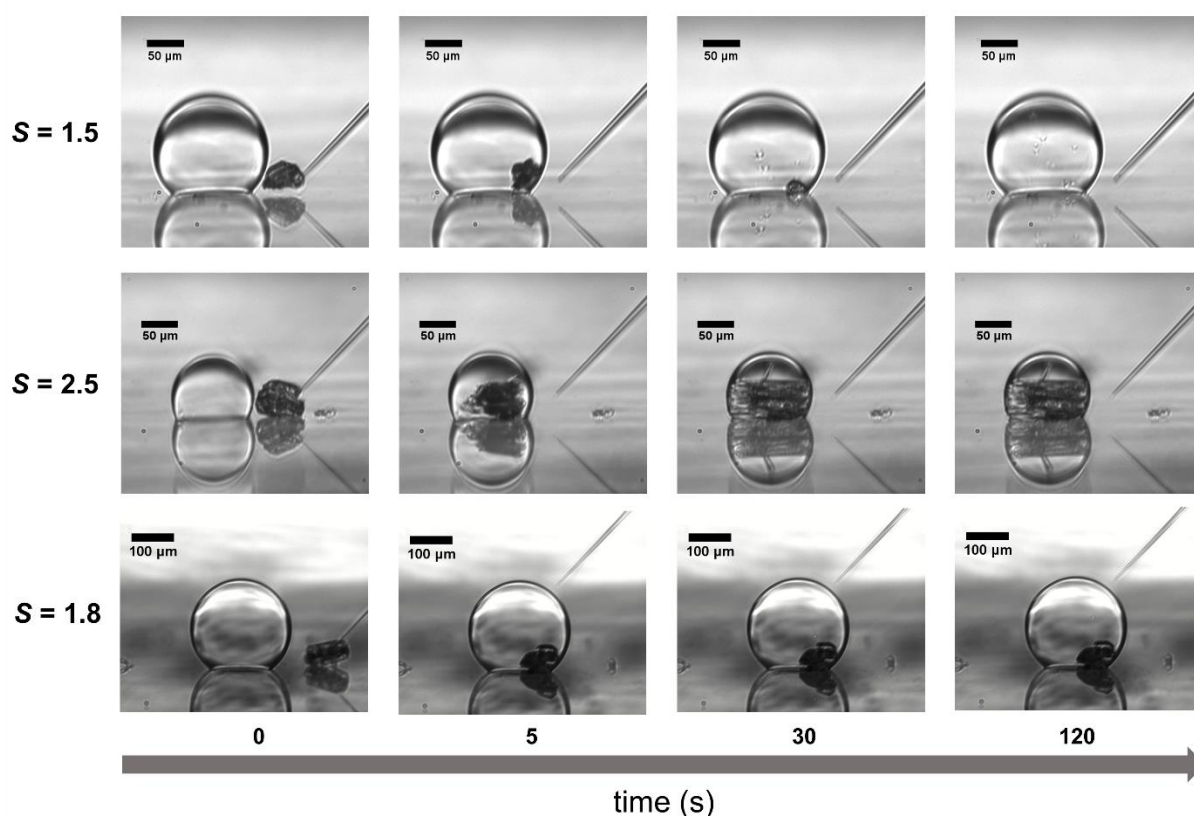


Figure 3. Snapshots during the solubility measurement of phase IV at selected times for different supersaturation ratios, with respect to phase II, performed at ambient conditions (25 °C, 1 atm, RH=0.35). The corresponding videos are available in Video S2-S4 of the Supplementary information.

Table 1. Dissolution behavior of the metastable crystal inside the microdroplet as a function of supersaturation ratio (with respect to the stable form) in the bracketing experiment.

Supersaturation Ratio S with respect to the stable form	Outcome
1.5	dissolve
1.6	dissolve

1.7	dissolve
1.8	~constant
1.9	grow
2.5	grow

We found that at $S=1.8$, the crystal essentially undergoes neither dissolution nor growth, indicating an equilibrium. Thus, the solubility can be conservatively estimated at $S = 1.8 \pm 0.1$ (corresponds to around 45 ± 2 g KDP per 100 g water at 25°C)¹²

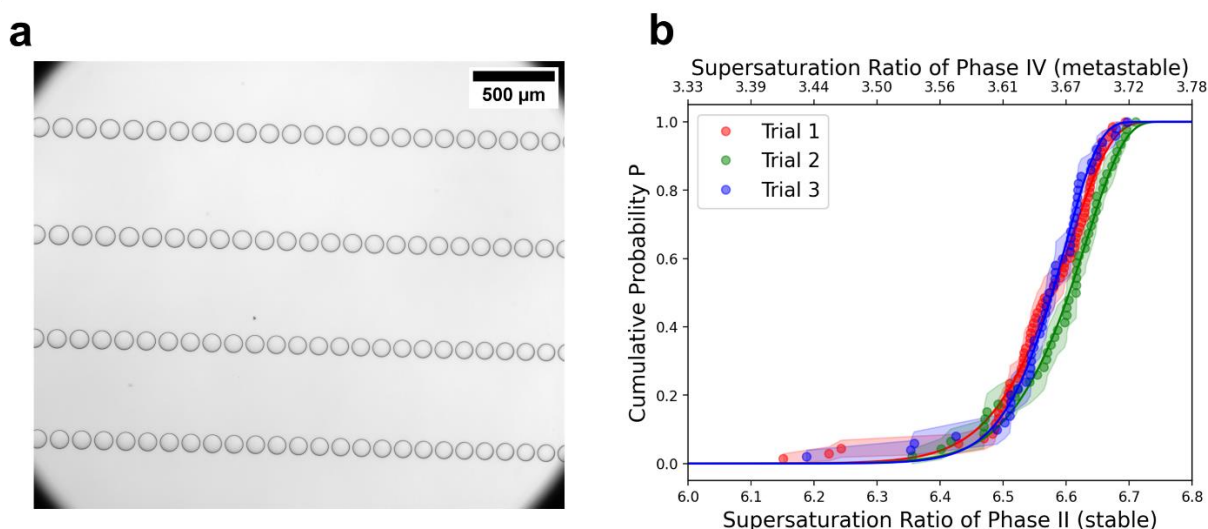


Figure 4. (a) Bottom-view image of sessile microdroplets (~ 200 μL at saturation) used in the nucleation kinetic measurement performed at 25°C , 1 bar, 10% RH. This process yields KDP Phase IV as confirmed by PXRD. (b) Cumulative probability plot ($N=68, 46, 50$ for Trials 1,2,3 respectively) as a function of supersaturation ratio with respect to stable form (bottom axis) and metastable form (top axis) fitted with inhomogeneous Poisson distribution coupled with classical nucleation theory⁸.

With the knowledge of the solubility of the metastable polymorph, we would be able to measure its interfacial energy from its probability distribution of nucleation times using the experimental setup in Ref⁸. The bottom-view optical image is shown in **Figure 4a** and the resulting probability plots for three trials are presented in **Figure 4b**. As part of data cleaning and pre-processing of induction time results, we applied a statistical test (k -sample Anderson Darling test) to identify and eliminate outliers in the dataset.⁶ We also removed the droplets that showed evidence of droplet interactions (using the image analysis protocol in Ref⁶). Then, we calculated the supersaturation ratio as a function of dimensionless induction time using a tailor-made evaporation model¹⁰ (details in section S1 of SI). The calculated Peclet number (Pe) suggests that the droplets maintain a homogeneous concentration distribution (i.e. $Pe \ll 1$, Figure S2d of SI). It is worth noting that for aqueous KDP solutions, we achieved unprecedentedly deep levels of supersaturation ($S > 6$ as shown in Figure 4b) which is even higher than in levitating droplets of Lee et al

($S \approx 4.1$).³ This can be explained in terms of the droplet size; our sessile microdroplets are thousand times smaller than that of Lee et al³ (30-200 pL vs 1-8 μ L). Indeed, smaller droplets can achieve deeper supersaturation levels due to the kinetic and thermodynamic confinement effects.¹³

Finally, by applying a fitting method (inhomogeneous Poisson distribution coupled with classical nucleation theory)⁸, we obtained the pre-exponential factor ($\log A$) and the effective interfacial energy (γ_{eff}) as displayed in Table 2. To evaluate the reproducibility across the 3 independent trials, we again applied the Anderson Darling test, which consequently confirmed that the 3 datasets have statistically identical distribution at 95% confidence (p -value = 0.09)

Table 2. Fitted pre-exponential factor and interfacial energy of the metastable KDP Phase IV from the probability distribution of nucleation times in Figure 4.

	N	$\log A$ ($\text{m}^{-3}\text{s}^{-1}$)	γ_{eff} (mJ/m^2)
Trial 1	68	36.7	56.1
Trial 2	46	38.0	57.2
Trial 3	50	43.9	60.9
Mean	--	39.5 ($\pm 8\%$)	58.1 ($\pm 4\%$)

Our estimated effective aqueous interfacial energy γ_{eff} for the metastable KDP Phase IV based on the mean of 3 trials is 58 mJ/m^2 . Alternatively, fitting using the combined dataset ($N = 164$) resulted in $\gamma_{\text{eff}} = 57 \text{ mJ}/\text{m}^2$ (which is essentially equivalent). To the best of our knowledge, this is the first experimental report of the aqueous interfacial energy of KDP Phase IV based on classical nucleation theory and its experimental solubility.

In general, metastable forms are expected to have lower γ_{eff} in comparison with the stable form. To estimate the γ_{eff} of the stable form, we employ the empirical correlation by Mersmann⁷ which can be written as

$$\gamma_{SL} = K(c_{sol})^{2/3} \ln\left(\frac{c_{sol}}{c_{sat}}\right) \quad (3)$$

with γ_{SL} as the interfacial energy (between crystal and solution), K as an empirical constant (identical for both polymorphs), and c_{sol} and c_{sat} as the equilibrium solid-state and liquid-phase concentrations (in mol/m^3) respectively. For the stable Phase II at ambient conditions, $c_{sol} = 17179 \text{ mol}/\text{m}^3$ and $c_{sat} = 1621.8 \text{ mol}/\text{m}^3$ (see Table 1 of Ref⁷). For the metastable Phase IV, $c_{sol} = 17032 \text{ mol}/\text{m}^3$ (from the ratio of solid-state densities). Applying ratio and proportion between the stable and metastable form, the empirical constant K is canceled out. This effectively removes the dependence of the model prediction on the accuracy of the empirical fitting parameter K (originally defined as $0.414k_bT N_A^{2/3}$ where k_bT and N_A correspond to thermal energy and Avogadro's number respectively)⁷.

Using our measured solubility ratio of 1.8, the Mersmann correlation yields $\gamma_{\text{stable}}/\gamma_{\text{metastable}} = 1.35$. Knowing that $\gamma_{\text{metastable}} = 58 \text{ mJ}/\text{m}^2$, the effective interfacial energy barrier of the stable form (Phase II) is then predicted to be around 78 mJ/m^2 .

With the knowledge of the interfacial energies γ_{eff} of both the stable Phase II and metastable Phase IV, we can proceed to model the competitive nucleation of the two polymorphs using classical nucleation theory (equation 2). Given that the mass transfer properties of the supersaturated solution (i.e. diffusivity, viscosity, etc) are identical in the liquid phase for both polymorphs, we can suppose that the parameter A (related to the mass transfer rate of the monomers towards the nucleus) is similar for both polymorphs, as in the analysis of Sato¹⁴ and Deij et al.¹⁵ Thus, for comparison, we can use the term (J/A) to describe the relative nucleation rate. Using $\gamma_{\text{eff}} = 58 \text{ mJ/m}^2$ for the metastable Phase IV (obtained from nucleation statistics) and $\gamma_{\text{eff}} = 78 \text{ mJ/m}^2$ for the stable Phase II (Mersmann correlation), the relative nucleation rates as a function of supersaturation ratio (with respect to both forms) are shown in **Figure 5**.

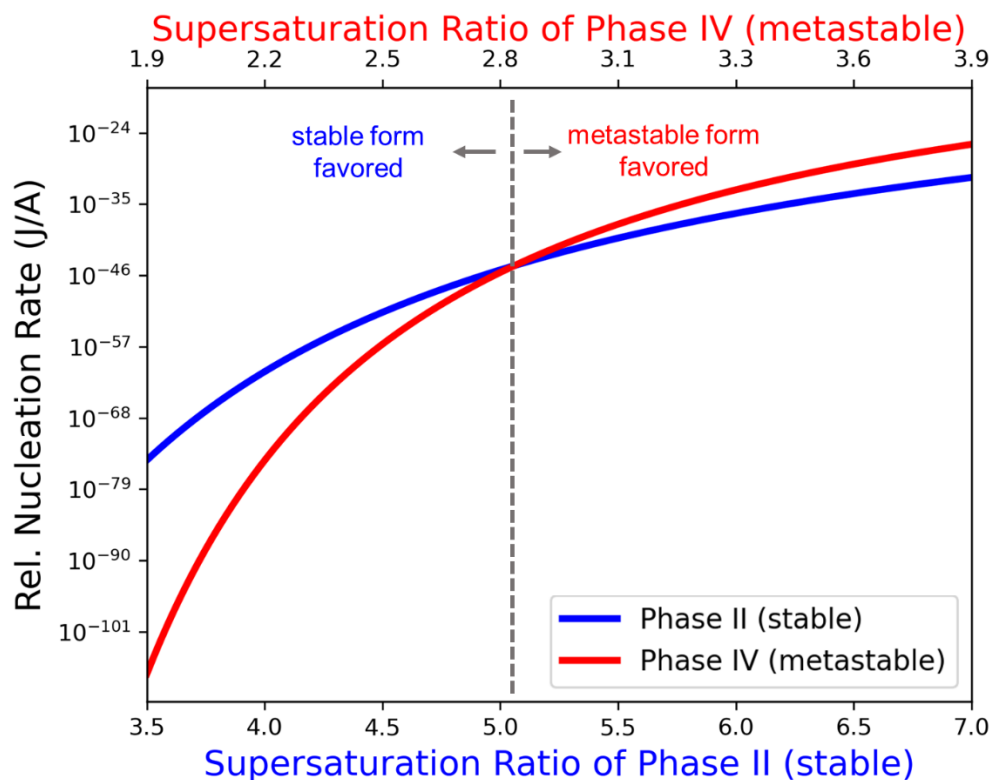


Figure 5. Relative nucleation rate (J/A) as a function of supersaturation ratio with respect to the stable phase (bottom axis) and the metastable phase (top axis).

We observe that the stable form is favored at low supersaturations while the metastable one at high supersaturations. This result is consistent with the experimental observation of Lee et al.³ This phenomenon can be explained by the competition between thermodynamics and kinetics.¹⁶ Although the metastable form has a lower nucleation barrier (kinetically favored), it experiences a lower supersaturation due to its high solubility (thermodynamically hindered). On the other hand, the stable form experiences a higher supersaturation (thermodynamically favored) but it needs to overcome a higher nucleation barrier (kinetically hindered). Thus, in the case of KDP, the stable Phase II dominates at lower concentrations because the highly soluble Phase IV is not sufficiently supersaturated. At higher concentrations, Phase IV dominates as it achieves sufficient supersaturation to overcome its lower nucleation barrier. Overall, our microfluidic experiments and modeling study reveal interesting insights on the competitive nucleation of KDP polymorphs.

CONCLUSION

In this work, we demonstrate a rapid microfluidic approach to measure the aqueous solubility and interfacial energy of a metastable polymorph using KDP Phase IV as a model compound. Using our measured solubility, we estimated its interfacial energy from its nucleation time statistics. Our results reveal that the KDP Phase IV is about 1.8 times more soluble in water than the stable Phase II, and its estimated aqueous interfacial energy is around 58 mJ/m². Applying Mersmann correlation⁷, the interfacial energy of the stable phase II is predicted to be around 78 mJ/m². With these interfacial energies, we used the classical nucleation theory to model the competitive nucleation of both polymorphs and the results show that the stable phase is favored at lower supersaturation while the metastable phase is favored at higher supersaturation, which agrees with our observations and experimental reports in the literature. Indeed, these findings reveal an interesting interplay between thermodynamics and kinetics in competitive polymorphic nucleation. Moreover, our results also highlight the advantage of the small volume (pL range) achieved in our microdroplet approach which permits access to unprecedentedly deep levels of supersaturation that would otherwise be unattainable with μ L scale experiments.

Our results also open routes for future investigations. Knowing that the stable form is favored at low supersaturations, it would be interesting to develop microfluidic platforms that offer a wider range of accessible concentrations and volume. Furthermore, our results can be used for comparison with other experimental approaches. For instance, interfacial energies can be accessed by measuring the contact angle of the saturated solution with the crystal face.¹⁷ Finally, the microfluidic approach presented herein can be used to study other polymorphic systems which are ubiquitous in the mineral processing and pharmaceutical industry.

SUPPORTING INFORMATION

The Supporting Information is available free of charge at <https://pubs.acs.org>

Evaporation Model

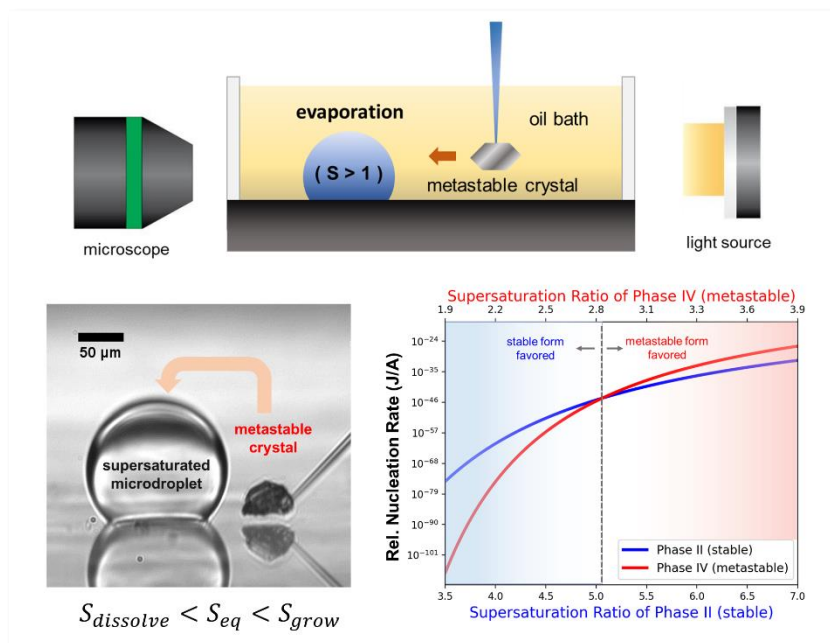
Video S1 : Crystal nucleated from microdroplet dissolves in the presence of the stable crystal

Video S2-S4 : Solubility measurement of phase IV for different supersaturation ratios, with respect to phase II, performed at ambient conditions, showing dissolution, growth and equilibrium at at S=1.5, 2.5 and 1.8 respectively.

ACKNOWLEDGEMENT

RC acknowledges the financial support of ANR-FACET, ANR-19-CE08-0014-02.

TOC GRAPHIC



REFERENCES

1. Ren, Y.; Zhao, X.; Hagley, E. W.; Deng, L., Ambient-condition growth of high-pressure phase centrosymmetric crystalline KDP microstructures for optical second harmonic generation. *Science Advances* **2016**, 2 (8), e1600404.
2. Cai, W.; Katrusiak, A., Structure of the high-pressure phase IV of KH_2PO_4 (KDP). *Dalton Transactions* **2013**, 42 (4), 863-866.
3. Lee, S.; Wi, H. S.; Jo, W.; Cho, Y. C.; Lee, H. H.; Jeong, S.-Y.; Kim, Y.-I.; Lee, G. W., Multiple pathways of crystal nucleation in an extremely supersaturated aqueous potassium dihydrogen phosphate (KDP) solution droplet. *Proceedings of the National Academy of Sciences* **2016**, 113 (48), 13618-13623.
4. Nicoud, L.; Licordari, F.; Myerson, A. S., Estimation of the Solubility of Metastable Polymorphs: A Critical Review. *Crystal Growth & Design* **2018**, 18 (11), 7228-7237.
5. Zhang, Y.; Huang, H.; Li, Y.; Liu, W.; Jiang, J.; Guo, K.; Yi, R.; Fei, Z.; Zhang, X.-a.; Mu, R.; Liu, X.; Chen, L.; Fang, H., Tuning crystal structure of potassium dihydrogen phosphate at ambient conditions. *Physical Review Materials* **2021**, 5 (10), 103401.
6. Cedeno, R.; Grossier, R.; Lagaize, M.; Nerini, D.; Candoni, N.; Flood, A.; Veesler, S., Nucleation in sessile saline microdroplets: induction time measurement via deliquescence–recrystallization cycling. *Faraday Discuss.* **2022**, 235 (0), 183-197.
7. Mersmann, A., Calculation of interfacial-tensions. *J. Cryst. Growth* **1990**, 102, 841.
8. Cedeno, R.; Grossier, R.; Candoni, N.; Levernier, N.; Flood, A. E.; Veesler, S., CNT effective interfacial energy and pre-exponential kinetic factor from measured NaCl crystal nucleation time distributions in contracting microdroplets. *The Journal of Chemical Physics* **2023**, 158 (19).

9. Grossier, R.; Tishkova, V.; Morin, R.; Veessler, S., A parameter to probe microdroplet dynamics and crystal nucleation. *AIP Advances* **2018**, *8* (7), 075324.
10. Cedeno, R.; Grossier, R.; Tishkova, V.; Candoni, N.; Flood, A. E.; Veessler, S., Evaporation Dynamics of Sessile Saline Microdroplets in Oil. *Langmuir* **2022**, *38* (31), 9686-9696.
11. Leroudier, J.; Zaccaro, J.; Ildefonso, M.; Veessler, S.; Baruchel, J.; Ibanez, A., Nucleation Control and Rapid Growth of KDP Crystals in Stationary Conditions. *Crystal Growth & Design* **2011**, *11* (6), 2592-2598.
12. Li, W.; Yu, G.; Wang, S.; Ding, J.; Xu, X.; Gu, Q.; Wang, D.; Huang, P., Influence of temperature on the growth and surface morphology of Fe³⁺ poisoned KDP crystals. *RSC Advances* **2017**, *7* (28), 17531-17538.
13. Hammadi, Z.; Candoni, N.; Grossier, R.; Ildefonso, M.; Morin, R.; Veessler, S., Small-volume nucleation. *C. R. Phys.* **2013**, *14*, 192.
14. Sato, K., Polymorphic transformations in crystal growth. *J. Phys. D: Appl. Phys.* **1993**, *26* (8B), B77.
15. Deij, M. A.; ter Horst, J. H.; Meekes, H.; Jansens, P.; Vlieg, E., Polymorph Formation Studied by 3D Nucleation Simulations. Application to a Yellow Isoxazolone Dye, Paracetamol, and L-Glutamic Acid. *The Journal of Physical Chemistry B* **2007**, *111* (7), 1523-1530.
16. Sun, W.; Ceder, G., Induction time of a polymorphic transformation. *CrystEngComm* **2017**, *19* (31), 4576-4585.
17. Machefer, S.; Schnitzlein, K., Experimental Study on the Effect of Polyol Admixtures on the Interfacial Tension of Potassium Dihydrogen Phosphate in Aqueous Solutions: Induction Time Experiments Versus Drop Shape Analysis. *Industrial & Engineering Chemistry Research* **2009**, *48* (5), 2659-2670.

Supplementary Material for:

Microdroplet Approach for Measuring Aqueous Solubility and Nucleation Kinetics of a Metastable Polymorph: The case of KDP Phase IV

Ruel Cedeno¹, Romain Grossier¹, Nadine Candoni¹, Stéphane Veessler^{1*}

¹CNRS, Aix-Marseille Université, CINaM (Centre Interdisciplinaire de Nanosciences de Marseille), Campus de Luminy, Case 913, F-13288 Marseille Cedex 09, France

S1. Evaporation Model

Table S1 Numerical values used as input in evaporation model¹ for aqueous KDP droplets, referenced at 25°C and 1 atm.

Quantity	Symbol	Value	Unit
solubility of water in PDMS oil ¹	c_s	8.76	mol/m ³
diffusivity of water in PDMS oil ¹	D	6.74×10^{-9}	m ² s ⁻¹
supersaturation at matching time*	S_{match}	4.90	-
coefficient of density change for KDP ²	b_1	0.0738	-
coefficient of water activity lowering for KDP**	b_2	0.130	-
solubility of KDP in water ³	c_{eq}	1.83	mol/kg
molar mass of KDP ⁴	M_{NaCl}	0.136	kg/mol
diffusivity of KDP in water ⁵	D_i	1.27×10^{-9}	m ² /s
density of pure water ⁴	ρ_w	997	kg/m ³

*measured by monitoring/interpolating the droplet volume (lateral view) as it optically disappears

**measured by fitting the evolution of droplet volume with the evaporation model

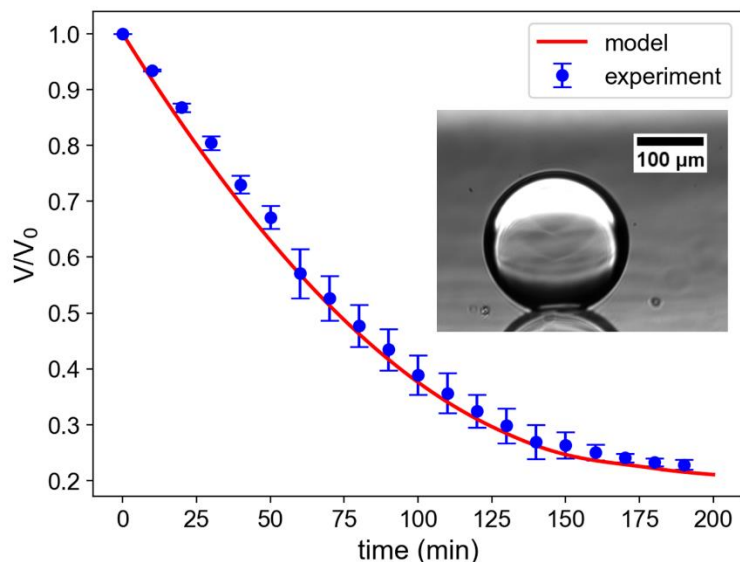


Figure S1. Evolution of relative droplet volume (V/V_0) as a function of time (3 replicates) taken from lateral images which were used to calibrate the evaporation model (for water activity dependence on supersaturation ratio).

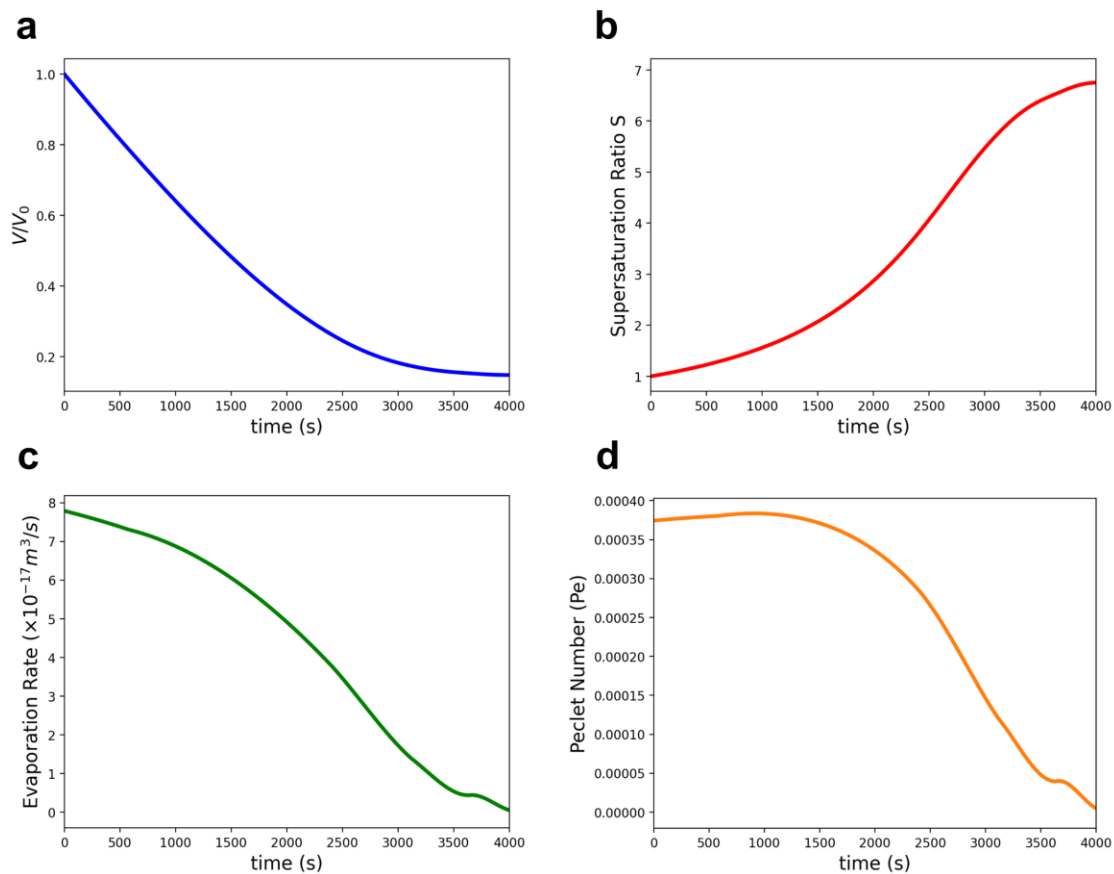


Figure S2. Model predictions for bottom-view arrays of microdroplets in terms of (a) relative volume V/V_0 (b) supersaturation ratio (c) evaporation rate (d) Peclet number^{1, 6}. $Pe < 1$ suggests a uniform distribution of concentration within the droplet. The droplets were subjected under the following conditions: $RH = 0.10$, $S_0 = 1$, $V_0 = 205 \text{ pL}$, $n_x = 3$, $n_y = 1$ where RH is the relative humidity, S_0 is the initial supersaturation ratio, V_0 is the initial volume, n_x and n_y are the effective number of intraline and interline interactions respectively. Note that we have demonstrated in Ref⁷ (section S4.4) that the resulting τ distributions are not sensitive to the choice of n_x and n_y .

REFERENCES

1. Cedeno, R.; Grossier, R.; Tishkova, V.; Candoni, N.; Flood, A. E.; Veessler, S., Evaporation Dynamics of Sessile Saline Microdroplets in Oil. *Langmuir* **2022**, *38* (31), 9686-9696.
2. Takubo, H.; Makita, H., Refractometric studies of $\text{NH}_4\text{H}_2\text{PO}_4$ and KH_2PO_4 solution growth; experimental setup and refractive index data. *J. Cryst. Growth* **1989**, *94* (2), 469-474.
3. Li, W.; Yu, G.; Wang, S.; Ding, J.; Xu, X.; Gu, Q.; Wang, D.; Huang, P., Influence of temperature on the growth and surface morphology of Fe^{3+} poisoned KDP crystals. *RSC Advances* **2017**, *7* (28), 17531-17538.
4. Don, W. G.; Robert, H. P., *Perry's Chemical Engineers' Handbook, Eighth Edition*. 8th ed. / ed.; McGraw-Hill Education: New York, 2008.
5. Mihailescu, M.; Gabor, A. R., Diffusion coefficient of potassium dihydrogen phosphate using holographic interferometry. *Romanian Reports of Physics* **2011**, *56*, 399-410.
6. Gregson, F. K. A.; Robinson, J. F.; Miles, R. E. H.; Royall, C. P.; Reid, J. P., Drying Kinetics of Salt Solution Droplets: Water Evaporation Rates and Crystallization. *The Journal of Physical Chemistry B* **2019**, *123* (1), 266-276.
7. Cedeno, R.; Grossier, R.; Candoni, N.; Levernier, N.; Flood, A. E.; Veessler, S., CNT effective interfacial energy and pre-exponential kinetic factor from measured NaCl crystal nucleation time distributions in contracting microdroplets. *The Journal of Chemical Physics* **2023**, *158* (19).