



**HAL**  
open science

## How carbon black nanoparticles affect the occurrence of soft-sparking during plasma electrolytic oxidation

L. Magniez, C. da Silva Tusch, S. Fontana, J. Martin, T. Czerwiec, C. Hérold, G. Henrion

► **To cite this version:**

L. Magniez, C. da Silva Tusch, S. Fontana, J. Martin, T. Czerwiec, et al.. How carbon black nanoparticles affect the occurrence of soft-sparking during plasma electrolytic oxidation. *Materials Letters*, 2023, 350, pp.134960. 10.1016/j.matlet.2023.134960 . hal-04205582

**HAL Id: hal-04205582**

**<https://hal.science/hal-04205582v1>**

Submitted on 13 Sep 2023

**HAL** is a multi-disciplinary open access archive for the deposit and dissemination of scientific research documents, whether they are published or not. The documents may come from teaching and research institutions in France or abroad, or from public or private research centers.

L'archive ouverte pluridisciplinaire **HAL**, est destinée au dépôt et à la diffusion de documents scientifiques de niveau recherche, publiés ou non, émanant des établissements d'enseignement et de recherche français ou étrangers, des laboratoires publics ou privés.



Distributed under a Creative Commons Attribution 4.0 International License

# 1 **How carbon black nanoparticles affect the occurrence of soft-sparking during** 2 **plasma electrolytic oxidation**

3  
4 L. Magniez, C. Da Silva Tousch, S. Fontana, J. Martin, T. Czerwicz, C. Hérold, G. Henrion\*  
5 Université de Lorraine, CNRS, IJL, F-54000 Nancy, France

6 \*Corresponding author: [gerard.henrion@univ-lorraine.fr](mailto:gerard.henrion@univ-lorraine.fr)

7  
8 **Keywords:** Aluminium, carbon-black, plasma electrolytic oxidation, soft-sparking

## 9 10 **Abstract**

11 The effect of dispersed carbon black nanoparticles in the electrolyte on the plasma electrolytic  
12 oxidation of aluminium under soft sparking regime is investigated. Increasing the concentration of  
13 particles reduces the breakdown voltage. It also makes the transition to soft sparking to occur earlier,  
14 which can favour a more homogeneous coating. However, it is shown that a too high concentration  
15 of particles can be detrimental to the coating morphology despite an apparent soft sparking regime  
16 characterized by a decrease in anodic voltage.

## 17 **1. Introduction**

18 Plasma electrolytic oxidation (PEO) has gained a growing interest over the last decades since it can  
19 advantageously replace anodizing and bring the processed parts new or at improved properties.  
20 Jaspard-Mecuson *et al.* [1] pointed out an interesting feature of PEO they named the “soft” regime.  
21 Indeed, when using an AC current to supply the processed parts, a transition from the conventional  
22 “arc” PEO to the “soft” PEO can occur depending on the processing parameters, especially the ratio  
23 of anodic to cathodic charge quantity  $RCQ = Q_A/Q_C$  delivered to the system [1, 2]. Transition to soft  
24 sparking is often characterized by an anodic voltage drop [2, 3] as well as a decrease in acoustic  
25 emission [1, 3-4], and sometimes the discharge extinction [1]. It must be mentioned however, that

1 under certain conditions, all these phenomena do not necessarily occur at the transition to soft  
2 sparking and, conversely, that the transition to soft sparking can occur without any decrease in  
3 anodic voltage [5].

4 Over the years, some factors have been identified to promote the transition to soft sparking: a higher  
5 current density or current frequency [6], a lower  $RCQ$  [4], the thickness of a pre-existing oxide layer  
6 [3], and the ageing of the electrolyte [7].

7 Particle incorporation into the PEO layer has also been a concern over the last years to improve the  
8 performance of the coating for various applications. The review by Lu *et al.* [8] gives an extensive  
9 overview of the PEO processing with particle addition. Most papers however focus on the properties  
10 of the resulting coating, and only few of them report on the influence of the particles on the process  
11 itself [9, 10]. Particularly, there is quite no paper dealing with the effect of particle addition on the  
12 occurrence of soft sparking.

13 Thus, this work focuses on the influence of carbon black nanoparticles (CB) on the PEO process,  
14 especially on the transition to soft regime and on the structure and morphology of the resulting PEO  
15 coatings. Considering that carbon particles are electrically conductive, this work could be of interest  
16 to modify the electrical resistivity of the resulting PEO coating.

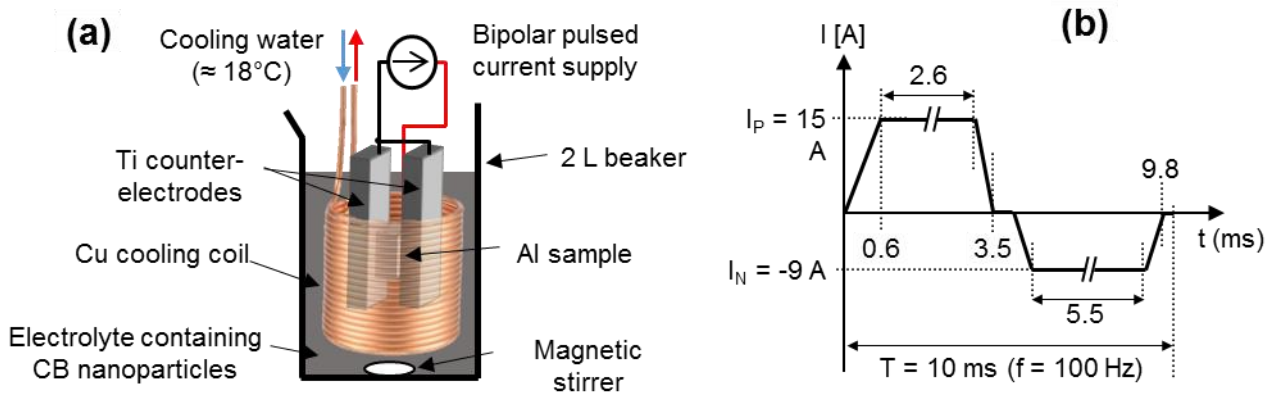
## 17 **2. Materials and methods**

18 PEO was carried out in a 2 L beaker with 1.7 L of electrolyte containing dispersed CB nanoparticles  
19 (Fig. 1). The electrolyte consisted of a base alkaline solution of potassium hydroxide ( $[KOH] = 17.8$   
20  $\text{mmol}\cdot\text{L}^{-1}$ ) and sodium silicate ( $[Na_2SiO_3] = 13.5 \text{ mmol}\cdot\text{L}^{-1}$ ) diluted in deionized water. The  
21 measured electrical conductivity and pH were  $7.4 \text{ mS}\cdot\text{cm}^{-1}$  and 12.3, respectively. To prepare the  
22 electrolytes, CB nanoparticles (VULCAN<sup>®</sup> XC72) were dispersed in this base solution with  
23 concentration ranging from 0 to  $12 \text{ g}\cdot\text{L}^{-1}$ . Before PEO processing, these suspensions were sonicated

1 for 30 min. In the following, samples are referred to as CB<sub>x</sub>, where x stands for the CB concentration  
2 (in g·L<sup>-1</sup>) in the base electrolyte.

3 Water at 18 °C flowed in a copper coil, which ensured the stabilization of the electrolyte temperature  
4 at 40 °C during treatment. A magnetic stirrer served to homogenize the electrolyte and to prevent  
5 sedimentation of CB particles. Rectangular samples (50×32×5 mm<sup>3</sup>) of 1050 aluminium alloy (> 99  
6 wt% Al) served as working electrode. Two titanium plates (120×50×1 mm<sup>3</sup>) placed 2 cm apart from  
7 each side of the sample served as counter electrodes.

8 A pulsed bipolar current generator (Ceratroni<sup>®</sup>) supplied the electrodes. The current waveform was  
9 specifically adjusted to achieve  $RCQ = 0.89$  (Fig. 1b), which promotes soft sparking [1]. For all  
10 experiments, anodic and cathodic current amplitudes were set at  $I_p = 15$  A and  $I_N = -9$  A,  
11 respectively, the current frequency was set at 100 Hz, and the treatment duration at 60 min.  
12 Variations of the current and voltage during the process were recorded using an AD board  
13 (KPCI3100) and a 1 GHz oscilloscope (Agilent 8132B).



14  
15 **Figure 1.** (a) Experimental set-up for PEO treatments with dispersed CB; (b) One period of the  
16 current waveform indicating the time at each change in the current rising/falling rate.

17  
18  
19 After PEO processing, samples were washed in an ultrasonic bath in ethanol and then dried in an  
20 oven at 100 °C before characterisation. Samples were observed by SEM (Quanta 650 FEG) working



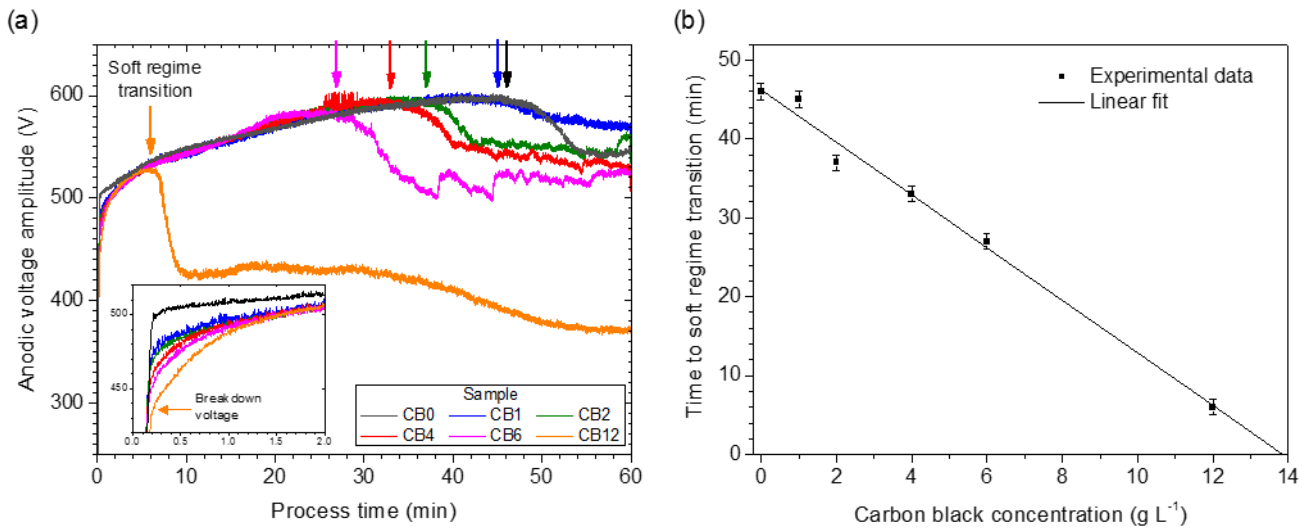
1 in back-scattered electron mode (for cross section views) and secondary electron mode (for surface  
2 views). Prior to SEM examination, samples were coated with a 10 nm gold layer to avoid charging  
3 issues. SEM observations were made in the middle of the sample at 1 cm from the bottom of the  
4 samples.

### 5 **3. Results and discussion**

6 The evolution of the anodic voltage amplitude as a function of the processing time is plotted in figure  
7 2a for different CB concentrations. Three main features can be noticed as the CB concentration  
8 varies. Firstly, the addition of particles reduces the breakdown voltage (inset in Fig. 2a) as reported  
9 in [9, 10]. Secondly, the higher the CB concentration in the electrolyte, the earlier the transition to  
10 soft sparking (Fig. 2a), and thirdly the amplitude of the voltage drop associated to the transition to  
11 soft regime increases with the CB concentration. It is also worth noting that the linear relationship  
12 between the time at transition to soft sparking and the CB concentration in the electrolyte (Fig. 2b)  
13 clearly evidences that there is a direct effect of the quantity of dispersed particles on the transition to  
14 the soft sparking regime. Up to now, the phenomena that sustain this effect are not clearly  
15 established. It could happen that the particles charge under the applied electric field, which would  
16 therefore affect the potential distribution at the electrolyte-coating interface, favouring the transition  
17 to soft regime.

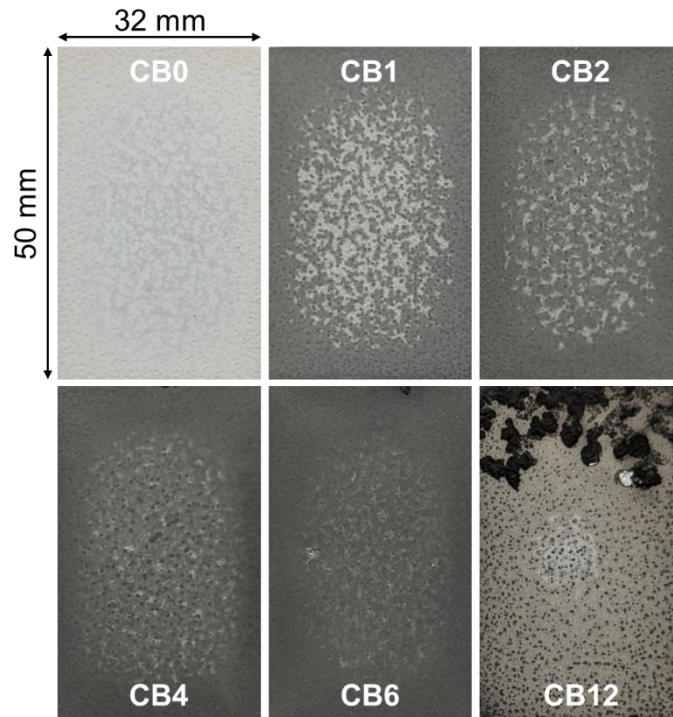
18 As expected, a progressive decrease in acoustic emission of the process is also noticed for each  
19 treated sample. Except for high CB concentration (CB12), the time at which the process becomes  
20 almost silent corresponds to the transition to the soft sparking regime and the associated anodic  
21 voltage drop. Regarding the specific case CB12, the decrease in acoustic emission only occurred at ~  
22 45 min, that is 40 min after the sharp voltage drop observed at 6 min of process. This could mean  
23 that, despite the voltage drop, some discharges continue to ignite. Considering that the anodic voltage  
24 value stays around the breakdown voltage (see inset in Fig. 2) all along these 40 min, the acoustic  
25 emission could be associated to discharges igniting at some locations, thus creating large cavities

1 lined with a PEO layer as observed in Fig. 4 for CB12 sample. Consequently, the process may not  
2 pass to soft regime under these conditions of high concentration in CB particles.



3  
4 **Figure 2.** (a) Evolution of the anodic voltage amplitude as a function of the processing time for  
5 different CB concentrations. Inset is an enlarged view of the first two minutes of process. (b)  
6 Variations of the time to soft regime transition as a function of the CB concentrations.

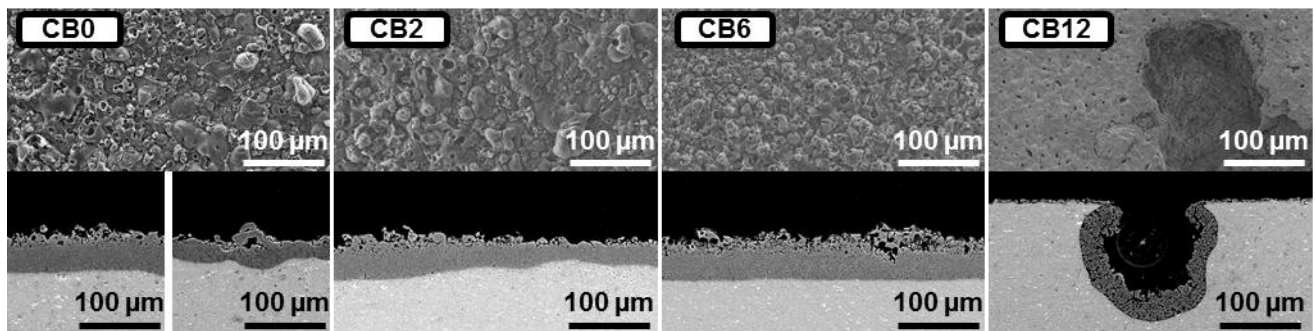
7  
8 Macroscopic views of the sample surface after treatment are shown in figure 3. The presence of CB  
9 in the electrolyte gives the samples a more or less dark grey colour as opposed to the very light grey  
10 (nearly white) aspect of sample processed without particle (CB0). This could indicate that carbon  
11 particles are indeed incorporated, at least on the top surface of the coating. An inhomogeneity can be  
12 observed between the centre and the edge of the samples, the edge being darker in case of a treatment  
13 with CB nanoparticles. Such an inhomogeneity is likely due to a stronger electric field at the edges  
14 (edge effect) [3, 6]. As the concentration in particles increases, the external aspect of the coatings  
15 becomes more homogeneous and darker, up to a concentration of 6 g·L<sup>-1</sup> (CB6). For the highest CB  
16 concentration (CB12), the colour of the sample is clearer and cavities can be seen on the surface.  
17 Some areas still look like bare aluminium and some aggregates of carbon particles are observed on  
18 the upper part of the sample. These aggregates could form because of the high particle concentration,  
19 and be pushed upward and agglomerate at the top part of the sample because of strong bubbling.



**Figure 3.** Visual aspects of the samples obtained after PEO treatment performed under soft regime conditions with different CB concentrations.

Top-most surface and cross-sectional SEM micrographs displayed in figure 4 show the morphology of the PEO coatings produced with various CB concentrations in the electrolyte. Without dispersed CB as well as for low concentrations (CB0 and CB2 in Fig. 4), two typical surface morphologies can be observed: the so-called “pancake”-like structure [11], and a “sponge”-like structure usually formed after establishment of the soft sparking regime. The cross section views confirm these two morphologies. In contrast, for sample CB6, only the “sponge”-like morphology is observed, thus forming a more homogeneous PEO coating due to a longer time under soft regime. As for CB12 sample, most of the surface is covered with a very thin oxide layer of about 3-5  $\mu\text{m}$  in thickness with relatively large pores (up to 10  $\mu\text{m}$ ). In some places, large open spherical cavities (up to 50  $\mu\text{m}$  in diameters) form open geodes-like structures with a porous oxide layer lining their internal walls.





**Figure 4.** Top-surface and cross sectional SEM micrographs recorded at the centre of the samples treated with different CB concentrations.

#### 4. Conclusion

The results presented in this study prove that adding CB nanoparticles in the electrolyte lowers the breakdown voltage and promotes a drop of the anodic voltage amplitude, which is usually associated with the transition to the soft sparking regime. However, this holds for reasonable CB concentrations (up to  $6 \text{ g}\cdot\text{L}^{-1}$  presently). Indeed, for higher concentrations of particles, although a sharp anodic voltage drop is observed, the PEO process does not seem to enter the soft sparking regime, as indicated by the acoustic emission and pointed out by the morphology and microstructure of the resulting coatings. It can thus be concluded that, for PEO processing of aluminium, the transition to soft sparking regime, as indicated by an anodic voltage drop, is not necessarily the relevant criterion for dense and high quality PEO coatings.

#### 5 Acknowledgements

This work was funded by the French national research agency (ANR21-CE08-0029).

#### 6 References

- [1] F. Jaspard-Mécuson, T. Czerwiec, G. Henrion, T. Belmonte, L. Dujardin, A. Viola, J. Beauvir, Surf. Coat. Technol. 201 (2007) 8677.
- [2] A. Melhem, G. Henrion, T. Czerwiec, J.L. Briançon, T. Duchanoy, F. Brochard, T. Belmonte, Surf. Coat. Technol. 205 (2011) S133.



- 1 [3] E. Matykina, R. Arrabal, P. Skeldon, G.E. Thompson, P. Belenguer, Surf. Coat. Technol. 205  
2 (2010) 1668.
- 3 [4] W. Gebarowski, S. Pietrzyk, Arch. Metall. Mater. 58 (2013) 241–245.
- 4 [5] Y. Cheng, T. Feng, Y. Cheng, J. Electrochem. Soc. 169 (2022) 071505
- 5 [6] J. Martin, A. Melhem, I. Shchedrina, T. Duchanoy, A. Nominé, G. Henrion, T. Czerwiec, T.  
6 Belmonte, Surf. Coat. Technol. 221 (2013) 70.
- 7 [7] J. Martin, P. Leone, A. Nominé, D. Veys-Renaux, G. Henrion, T. Belmonte, Surf. Coat.  
8 Technol. 269 (2015) 36.
- 9 [8] X. Lu, M. Mohedano, C. Blawert, E. Matykina, R. Arabal, K. U. Kainer, M. L. Zeludkevich,  
10 Surf. Coat. Technol. 307 (2016) 1165-1182.
- 11 [9] X. Li, B.L. Luan, Mater. Lett. 86 (2012) 88.
- 12 [10] K.M. Lee, Y.G. Ko, D.H. Shin, Current Applied Physics 11 (2011) S55.
- 13 [11] G. Sundararajan, L. Rama Krishna, Surf. Coat. Technol. 167 (2003) 269