



**HAL**  
open science

## **A new species and new Brazilian state record in *Lepturges* (*Lepturges*) Bates (Coleoptera, Cerambycidae, Lamiinae)**

Antonio Santos Silva, Miguel A. Monné

### ► **To cite this version:**

Antonio Santos Silva, Miguel A. Monné. A new species and new Brazilian state record in *Lepturges* (*Lepturges*) Bates (Coleoptera, Cerambycidae, Lamiinae). *Faunitaxys*, 2023, 11 (59), pp.1-4. <hal-04203385>

**HAL Id: hal-04203385**

**<https://hal.science/hal-04203385v1>**

Submitted on 11 Sep 2023

**HAL** is a multi-disciplinary open access archive for the deposit and dissemination of scientific research documents, whether they are published or not. The documents may come from teaching and research institutions in France or abroad, or from public or private research centers.

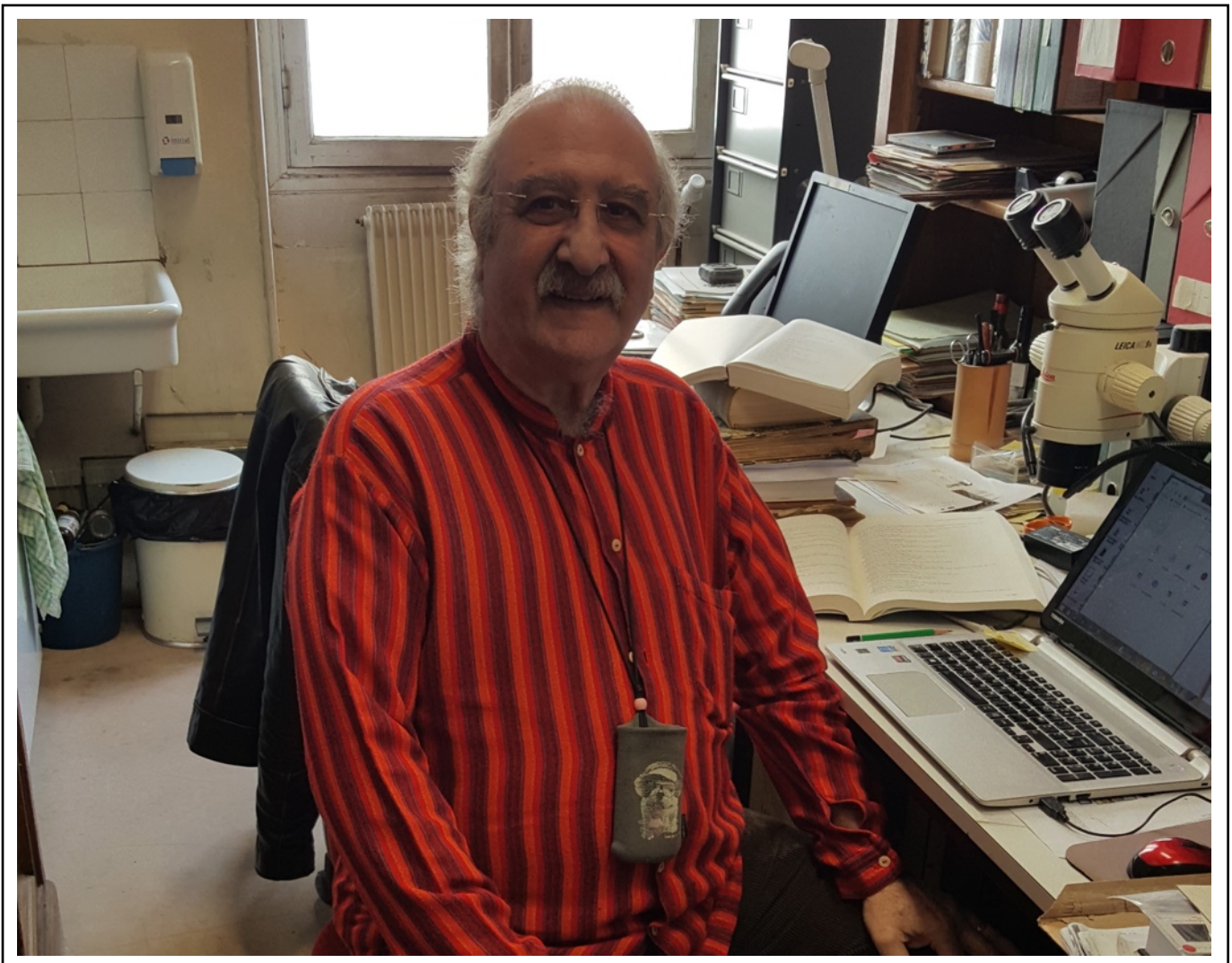
L'archive ouverte pluridisciplinaire **HAL**, est destinée au dépôt et à la diffusion de documents scientifiques de niveau recherche, publiés ou non, émanant des établissements d'enseignement et de recherche français ou étrangers, des laboratoires publics ou privés.



Distributed under a Creative Commons CC BY-NC-ND 4.0 - Attribution - Non-commercial use - No Derivative Works - International License

# Faunitaxys

*Revue de Faunistique, Taxonomie et Systématique  
morphologique et moléculaire*



Volume 11  
Numéro 59

Septembre 2023

ISSN (Print) : 2269 - 6016  
ISSN (Online) : 2970 - 4960  
Dépôt légal : Septembre 2023

# Faunitaxys

*Revue de Faunistique, Taxonomie et Systématique  
morphologique et moléculaire*

ZooBank : <http://zoobank.org/79A36B2E-F645-4F9A-AE2B-ED32CE6771CC>

Directeur de la publication, rédacteur, conception graphique et PAO:

*Lionel Delaunay*

Cette revue ne peut pas être vendue

Elle est distribuée par échange aux institutions (version papier)

et sur simple demande aux particuliers (format PDF)

à l'adresse suivante:

AFCFF (Association française de Cartographie de la Faune et de la Flore)

28, rue Voltaire, F- 42100 Saint Etienne

E-mail: [faunitaxys.journal@gmail.com](mailto:faunitaxys.journal@gmail.com)

Elle est disponible librement au téléchargement à partir du site:

<http://faunitaxys.fr/>

La parution de *Faunitaxys* est apériodique

*Faunitaxys* est indexé dans / *Faunitaxys* is indexed in:

- **Zoological Record**

Articles and nomenclatural novelties are referenced by:

- **ZooBank** (<https://zoobank.org>)

Online Archives:

- **HAL** (<https://hal.archives-ouvertes.fr>)

- **Internet Archive** (<https://archive.org>)

Imprimée sur les presses de SPEED COPIE, 6, rue Tréfilerie, F- 42100 Saint-Etienne

**Imprimé le 10 09 2023**

# A new species and new Brazilian state record in *Lepturges* (*Lepturges*) Bates (Coleoptera, Cerambycidae, Lamiinae)

ANTONIO SANTOS-SILVA (1, \*) & MIGUEL A. MONNÉ (2)

(1) Museu de Zoologia, Universidade de São Paulo, São Paulo, SP, Brazil.

- E-mail: [toncriss@uol.com.br](mailto:toncriss@uol.com.br) - Orcid: <https://orcid.org/0000-0001-7128-1418>

- ZooBank: <https://zoobank.org/8E7804F2-4315-4D23-9FA5-2E5D13841364>

(2) Museu Nacional, Universidade Federal do Rio de Janeiro, Quinta da Boa Vista, São Cristóvão, 20940.040, Rio de Janeiro, RJ, Brazil.

- E-mail: [monne@uol.com.br](mailto:monne@uol.com.br) - Orcid: <https://orcid.org/0000-0001-8825-3122>

- ZooBank: <https://zoobank.org/7AE99463-7ABC-465F-9B15-875AB7C70A20>

\* Corresponding author

## Keywords:

Coleoptera; taxonomy;  
Cerambycidae; description;  
*Lepturges*; Neotropical region;  
new species; South America.

**Abstract.** – *Lepturges* (*Lepturges*) *pfanderæ* sp. nov. is described from Brazil (Bahia and Espírito Santo). *Lepturges* (*Lepturges*) *linearis* Bates, 1863 is recorded from the Brazilian state of Roraima.

Santos-Silva A. & Monné M. A., 2023. – A new species and new Brazilian state record in *Lepturges* (*Lepturges*) Bates (Coleoptera, Cerambycidae, Lamiinae). *Faunitaxys*, 11(59): 1 – 4.

DOI: [https://doi.org/10.57800/faunitaxys-11\(59\)](https://doi.org/10.57800/faunitaxys-11(59))

ZooBank: <https://zoobank.org/F0451A09-0313-4A84-A363-4AC500ECFC33>

Received: 08/08/2023 – Revised: 10/09/2023 – Accepted: 11/09/2023

## Introduction

During the process of identification of specimens belonging to the MZSP (Museu de Zoologia, Universidade de São Paulo, São Paulo, Brazil) collection we found three specimens of a new species of *Lepturges* (*Lepturges*) Bates, 1863 (Lamiinae, Acanthocinini) that we are describing here. Additionally, we found a specimen of *Lepturges* (*Lepturges*) *linearis* Bates, 1863 allowing us to provide a new Brazilian state record for the species.

*Lepturges* (*Lepturges*) includes 85 species distributed from Canada to southern South America (Bezark 2023b; Monné 2023; Tavakilian & Chevillotte 2023). Based on the extremely variable shape of several morphological features, apparently, it includes more than one genus. *Lepturges* (*Lepturges*) includes species with different body shapes, different pronotal shape and position of lateral tubercles, different distance between upper eye lobes, different scape length, different elytral apex shape, and different shape and length of metafemora. All of this together strongly suggest that there are at least two mixed genera within it. Therefore, it is not possible to provide a reliable definition of the subgenus.

## Material and methods

Photographs were taken at MZSP with a Canon EOS TD Mark II camera and Canon MP-E 65 mm f/2.8 1-5X macro lens, controlled by Zerene Stacker AutoMontage software. Measurements were taken in “mm” using measuring ocular Hensoldt/Wetzlar - Mess 10 in the Leica MZ6 stereomicroscope, also used in the study of the specimens. The references on *L. (L.) linearis* are restricted to the original description and Monné’s catalog (2023).

## Reviewers :

Dan Heffern (Houston, Texas, USA) - <https://zoobank.org/E3B400A7-9B0B-44AF-B0DE-DEF90A638A27> - <https://orcid.org/0000-0003-2263-6643>

Felipe A. Noguera (Universidad Nacional Autónoma de México) - <https://zoobank.org/630F4E91-D507-46F5-A942-49D1A7CD2C4C> - <https://orcid.org/000-0003-4417-8436>

## Results

ACANTHOCININI Blanchard, 1845

*Lepturges* (*Lepturges*) Bates, 1863

*Lepturges* (*Lepturges*) *pfanderæ* sp. nov.

(Fig. 1-5)

ZooBank: <https://zoobank.org/D14C2540-A485-4263-878D-A01FDC486561>

**Holotype**, ♀, (MZSP 55493), BRAZIL, *Espírito Santo*: Linhares, Fazenda São Félix, 11.X.1966, Niella leg. (MZSP).

## Paratypes

BRAZIL

*Bahia*: Itajuípe, Fazenda Santa Luiza, 1 ♂ (MZSP 55495), 9.IX.1969, J. Silva leg. (MZSP).

*Espírito Santo*: Linhares, Fazenda Boa Esperança, 1 ♂ (MZSP 55494), 13.XII.1968, J.M. Abreu leg. (MZSP).

## Description of the holotype

**Coloration.** – Integument mostly black; ventral mouthparts brown, except yellowish apex of maxillary palpomere IV and labial palpomere III; anteclypeus brownish; anterior half of labrum yellowish-brown; antennae dark brown. Profemora orangish except dark-brown apex of dorsal and lateral surfaces; mesofemora orangish except dark brown apical third; metafemora dark brown, slightly lighter on basal quarter. Tibiae dark brown. Tarsi brown.

**Head.** – Frons densely, finely punctate; with abundant bluish-gray pubescence not obscuring integument, except glabrous median groove. Vertex distinctly elevated, convex from area of antennal tubercles; abundantly, finely punctate, except subsmooth area close to prothorax; with abundant bluish-gray pubescence not obscuring integument on punctate area, glabrous on subsmooth area. Median groove well marked



This is an open access article under the terms of the Creative Commons Attribution-NonCommercial-NoDerivs License, which permits use and distribution in any medium, provided the original work is properly cited, the use is non-commercial and no modifications or adaptations are made.

Copyright 2023 The Authors. *Faunitaxys* published by Lionel Delaunay on behalf of the AFCFF (Association française de Cartographie de la Faune et de la Flore).

from clypeus to area between antennal tubercles. Area behind with dense pubescence close to eye, pubescence bluish-gray close to upper eye lobes, gradually whitish and sparser toward inferior region of lower eye lobe. Genae abundantly, finely punctate, with abundant whitish pubescence not obscuring integument, except glabrous apex. Wide central area of postclypeus with abundant, bristly bluish-gray pubescence not obscuring integument, and a few long, erect, thick blackish setae interspersed. Sides of postclypeus glabrous. Labrum with abundant bluish-gray pubescence not obscuring integument on posterior half, with long, erect, thick setae interspersed, setae blackish basally, gradually yellowish toward their apices, glabrous on anterior half, except anterior margin with sparse, short yellowish setae. Distance between upper eye lobes 0.32 times distance between outer margins of eyes; in frontal view, distance between lower eye lobes 0.60 times distance between outer margins of eyes. Antennae 3.8 times elytral length, reaching elytral apex at apical quarter of antennomere V. Scape with abundant brown pubescence not obscuring integument, except ventral surface with abundant bluish-gray pubescence not obscuring integument. Pedicel with abundant brown pubescence not obscuring integument, with whitish pubescence interspersed on basal third; with one long, erect, thick blackish setae ventrally. Antennomeres III–V with abundant brown pubescence not obscuring integument, with decumbent, whitish setae interspersed; VI–XI with abundant brownish pubescence not obscuring integument, and short, erect white setae interspersed; III–V with a few long, erect, thick blackish setae ventrally; VI–IX with a few long, erect blackish setae on ventral apex.

Antennal formula (ratio) based on length of antennomere III:

– Scape = 1.39. – Pedicel = 0.13. – IV = 1.04. – V = 1.08. – VI = 1.08. – VII = 1.08. – VIII = 1.13. – IX = 1.19. – X = 1.22. – XI = 1.87.

**Thorax.** – Prothorax wider than long; anterior constriction well marked; sides divergent from anterior constriction to lateral tubercles; lateral tubercles as a continuation of the sides of prothorax, located about posterior sixth, with acute apex directed backward. Pronotum densely, finely punctate; with transverse, irregular row of coarse punctures near posterior margin (Fig. 5); with abundant bluish-gray pubescence not obscuring integument, except sparse pubescence close to anterior margin; with a few long, erect dark-brown setae near lateral tubercles of prothorax. Sides of prothorax densely, finely punctate; with abundant bluish-gray pubescence not obscuring integument, except glabrous area close to anterior margin. Ventral surface of thorax with abundant bluish-gray pubescence not obscuring integument, except sparse pubescence close to anterior margin of prosternum. Prosternal process 0.09 times procoxal width. Narrowest area of mesoventral process located centrally, 0.19 times mesocoxal width. Scutellum with abundant bluish-gray pubescence not obscuring integument.

**Elytra.** – Moderately abundantly, coarsely punctate on basal half, punctures slightly finer and sparser toward apex on posterior half; apex truncate, slightly concave; with abundant bluish-gray pubescence not obscuring integument.

**Legs.** – Pro- and mesofemora with abundant whitish pubescence not obscuring integument; metafemora with abundant grayish-white pubescence not obscuring integument. Protibiae with abundant whitish pubescence partially obscuring integument dorsally and laterally and dense, bristly brown pubescence ventrally; mesotibiae with abundant whitish pubescence partially obscuring integument dorsally and laterally, except brown pubescence on apical third, and abundant brown pubescence ventrally, brown pubescence bristly on apical quarter; metatibiae with abundant grayish-white pubescence partially obscuring integument dorsally and laterally, and abundant brown pubescence not obscuring integument ventrally; mesotibiae with a few short, thick, erect dark-brown setae ventrally; metatibiae with short, thick, erect dark-brown setae throughout. Dorsal surface of tarsomeres with abundant brownish pubescence partially obscuring integument, with grayish-white pubescence interspersed on metatarsomere I; metatarsomere I 1.8 times longer than II–III together.

**Abdomen.** – Ventrites with abundant bluish-gray pubescence partially obscuring integument, except glabrous central apex of ventrites 3–4; ventrite 5 subtriangular, longer than ventrite 4, with rounded apex.

**Male.** Similar to female, differing by the abdominal ventrite 5 transverse.

**Dimensions** (mm) (holotype ♀ / paratype ♂).

- Total length, 4.50 / 4.85–4.90;
- Prothoracic length, 0.80 / 0.85–0.85;
- Anterior prothoracic width, 0.85 / 0.90–0.95;
- Posterior prothoracic width, 1.00 / 1.05–1.05;
- Maximum prothoracic width, 1.30 / 1.35–1.40;
- Humeral width, 1.50 / 1.60–1.65;
- Elytral length, 3.20 / 3.45–3.55.

**Etymology.** – The new species is dedicated to Isabelle Zürcher Pfander (Naturhistorisches Museum Basel, Basel, Switzerland) for constant help to the first author.

**Remarks.** – *Lepturges* (*Lepturges*) *pfanderae* sp. nov. is similar to *L. (L.) spitzii* Melzer, 1928 (Fig. 6), but differs as follows: body stouter in both sexes; elytral apex truncate and slightly concave; general pubescence bluish-gray; and metatibiae with short, erect and thick dark-brown setae dorsally. In *L. (L.) spitzii*, the body is slender, elytral apex rounded, general pubescence brown, and the metatibiae have no short, erect and thick setae dorsally. It differs from *L. (L.) unicolor* Gilmour, 1959 (see photographs on Bezark 2023a and in the original description) by the general pubescence bluish-gray (brown in *L. (L.) unicolor*) and by the elytral apex truncate and slightly concave (rounded in *L. (L.) unicolor*). *Lepturges* (*Lepturges*) *pfanderae* sp. nov. is also similar to *L. (L.) brunneus* Roguet, 2022 (see photographs on Bezark 2023a and in the original description), but differs by the general pubescence bluish-gray (brown in *L. (L.) brunneus*), and by the mesoventral process not sublaminiform (sublaminiform in *L. (L.) brunneus*).

#### *Lepturges* (*Lepturges*) *linearis* Bates, 1863

(Fig. 7)

*Lepturges linearis* Bates, 1863: 369; Monné, 2023: 110.

**Material examined.** – BRAZIL, *Roraima* (new state record): Caracarái, (Vila Caicubi, trilha do INPA), 01°01'45.2"S 62°05'12.2"W, 1 ♂ (MZSP 55492), 7.IX.2011, G. Biffi & L.R. Prado leg. (MZSP).

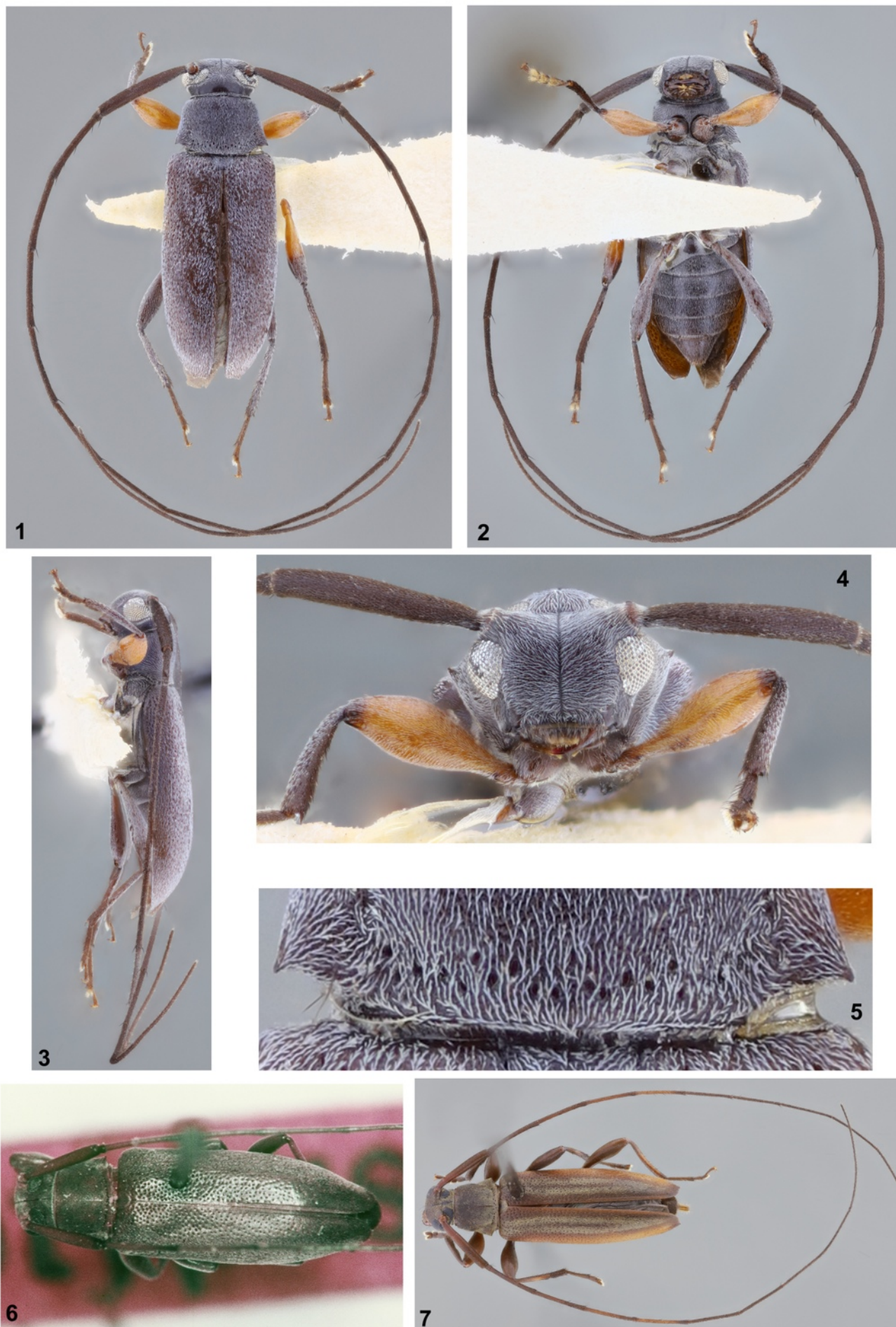
**Remarks.** – This species was described based on syntypes from Brazil (Amazonas). Currently it is known from Brazil (Amazonas, Mato Grosso) and Bolivia (Santa Cruz) (Bezark 2023b; Monné 2023; Tavakilian & Chevillotte 2022).

#### Acknowledgments

We thank the Taxonline Project (Projeto Taxonline—Rede Paranaense de Coleções Biológicas) for sending some slides used in this work, which belong to the Coleção de Imagens de material-tipo J.S. Moure (CITIMOURE) of the entomological collection Pe. J.S. Moure (DZUP).

#### References

- Bates H.W., 1863. – Contributions to an insect fauna of the Amazon Valley. Coleoptera: Longicornes. *The Annals and Magazine of Natural History*, (3)12: 367–381.
- Bezark L.G., 2023a. – A photographic Catalog of the Cerambycidae of the World. New World Cerambycidae Catalog. Available from <http://bezbycids.com/byciddb/wdefault.asp?w=n/> (Last accessed 31 July 2023.)
- Bezark L.G., 2023b. – Checklist of the Oxypeltidae, Vesperidae, Disteniidae and Cerambycidae (Coleoptera) of the Western



Figures 1-7. *Lepturges (Lepturges)* spp.

- 1-5. *Lepturges (Lepturges) pfanderae* sp. nov., holotype ♀. 1. Dorsal habitus. 2. Ventral habitus. 3. Lateral habitus. 4. Head, frontal view. 5. Posterior region of the pronotum.  
 6. *Lepturges (Lepturges) spitzi* Melzer, 1928, paratype, dorsal habitus, by Jesus Santiago Moure.  
 7. *Lepturges (Lepturges) linearis* Bates, 1863, male from Brazil (Roraima), dorsal habitus.

Hemisphere. 2023 Edition (updated through 31 December 2022). Available from <http://bezbycids.com/byciddb/wdefault.asp?w=n> (Last accessed 6 August 2023.)

Monné M.A., 2023. – Catalogue of the Cerambycidae (Coleoptera) of the Neotropical region. Part II. Subfamily Lamiinae. Available from: <https://cerambycids.com/catalog/> (Last accessed 6 August 2023.)

Tavakilian G.L. & Chevillotte H., 2023. – Titan: base de données internationales sur les Cerambycidae ou Longicornes. Available from: <http://titan.gbif.fr/> (Last accessed 6 August 2023.)

## Résumé

Santos-Silva A. & Monné M. A., 2023. – Une nouvelle espèce du genre *Lepturges* (*Lepturges*) Bates, du Brésil (Coleoptera, Cerambycidae, Lamiinae). *Faunitaxys*, 11(59): 1–4.

*Lepturges* (*Lepturges*) *pfanderæ* **sp. nov.** est décrite du Brésil (Bahia et Espírito Santo). *Lepturges* (*Lepturges*) *linearis* Bates, 1863 est signalé de l'État brésilien de Roraima.

Mots-clés. – Coleoptera, Cerambycidae, *Lepturges*, espèce nouvelle, taxonomie, description, Région néotropicale, Amérique du Sud.

## Contribution of the authors <sup>1</sup>

Project initiator. – AS

Scientific coordinator. – AS

Publisher Correspondence. – AS

Writing the article. – AS, MM

Article proofreading. – AS

Bibliographic work. – AS

Material study. – AS

Author of the figures. – AS

<sup>1</sup> AS = Antonio Santos-Silva. – MM = Miguel A. Monné.

---

## Derniers articles publiés

Lanuzza-Garay A., 2023. – A New Genus, New Species and New Country Records of Longhorned Beetles (Cerambycidae, Lamiinae) from Panama. *Faunitaxys*, 11(25): 1–5. [https://doi.org/10.57800/faunitaxys-11\(25\)](https://doi.org/10.57800/faunitaxys-11(25))

Delaunay L. & Coache A., 2023. – Contribution à la connaissance de la biodiversité entomique africaine. III. – *Oedichirus georgesi* **n. sp.** de Sao Tomé & Principe (Coleoptera, Staphylinidae, Paederinae). *Faunitaxys*, 11(26): 1–7. [https://doi.org/10.57800/faunitaxys-11\(26\)](https://doi.org/10.57800/faunitaxys-11(26))

Platia G. & Coache A., 2023. – Description of a new species of *Rismethus* Fleutiaux, 1947 from Republic of Benin with a key to the known African species (Coleoptera, Elateridae, Agrypnini). *Faunitaxys*, 11(27): 1–4. [https://doi.org/10.57800/faunitaxys-11\(27\)](https://doi.org/10.57800/faunitaxys-11(27))

Santos-Silva A., Delahaye N. & Pirk I. J., 2023. – The mysterious *Aplagiognathus serratus* Thomson: a new synonym in Macrotomini (Coleoptera, Cerambycidae, Prioninae, Macrotomini). *Faunitaxys*, 11(28): 1–4. [https://doi.org/10.57800/faunitaxys-11\(28\)](https://doi.org/10.57800/faunitaxys-11(28))

Vives E., 2023. – Especies nuevas o interesantes de longicórnios de Filipinas (Pars 27) (Coleoptera, Cerambycidae). *Faunitaxys*, 11(29): 1–3. [https://doi.org/10.57800/faunitaxys-11\(29\)](https://doi.org/10.57800/faunitaxys-11(29))

Coache A., Vitali F., Richard D. & Maquart P. O., 2023. – Description of a new species of *Calanthemis* Thomson, 1864 (Coleoptera: Cerambycidae) from Principe Island. *Faunitaxys*, 11(30): 1–3. [https://doi.org/10.57800/faunitaxys-11\(30\)](https://doi.org/10.57800/faunitaxys-11(30))

Platia G. & Pulvirenti E., 2023. – New species and new records of click beetles of the genera *Girardelater* Schimmel, 1999, *Procræus* Reitter, 1905 and *Xanthopenthes* Fleutiaux, 1928 from the Oriental Region (Coleoptera, Elateridae, Elaterini and Megapenthini). *Faunitaxys*, 11(31): 1–18. [https://doi.org/10.57800/faunitaxys-11\(31\)](https://doi.org/10.57800/faunitaxys-11(31))

Háva J. & Coache A., 2023. – A contribution to knowledge of Mycetophagidae (Coleoptera) from Sao Tome and Principe. *Faunitaxys*, 11(32): 1–5. [https://doi.org/10.57800/faunitaxys-11\(32\)](https://doi.org/10.57800/faunitaxys-11(32))

Devesa S. & Santos-Silva A., 2023. – On *Elaphidion tuberculicolle* Fisher, 1932 and *Elaphidion scaramuzzai* Fisher, 1951 (Coleoptera, Cerambycidae). *Faunitaxys*, 11(33): 1–7. [https://doi.org/10.57800/faunitaxys-11\(33\)](https://doi.org/10.57800/faunitaxys-11(33))

Delahaye N., Marazzi G. & Marazzi V., 2023. – Quelques remarques sur le genre *Xixuthrus* Thomson, 1864 avec la description de deux nouvelles espèces (Coleoptera, Cerambycidae, Prioninae, Macrotomini, Xixuthrina). *Faunitaxys*, 11(34): 1–9. [https://doi.org/10.57800/faunitaxys-11\(34\)](https://doi.org/10.57800/faunitaxys-11(34))

Lourenço W. R. & Velten J., 2023. – Confirmation of the validity of the genus *Cretaceousbuthus* Lourenço, 2022 and description of a new species from Burmite (Scorpiones: Buthoidea: Buthidae). *Faunitaxys*, 11(35): 1–6. [https://doi.org/10.57800/faunitaxys-11\(35\)](https://doi.org/10.57800/faunitaxys-11(35))

Théry T., 2023. – Description of *Derolathrus foveiceps* **n. sp.** from Florida (Coleoptera: Jacobsoniidae). *Faunitaxys*, 11(36): 1–4. [https://doi.org/10.57800/faunitaxys-11\(36\)](https://doi.org/10.57800/faunitaxys-11(36))

Bate R. & Bate M. D., 2023. – New synonymies and distribution records of some longhorn beetles (Coleoptera, Cerambycidae) occurring in South Africa. *Faunitaxys*, 11(37): 1–9. [https://doi.org/10.57800/faunitaxys-11\(37\)](https://doi.org/10.57800/faunitaxys-11(37))

Háva J. & Coache A., 2023. – *Anthrenus* (*Anthrenodes*) *sarahae* **sp. nov.**, a new species from Benin (Coleoptera: Dermestidae). *Faunitaxys*, 11(38): 1–3. [https://doi.org/10.57800/faunitaxys-11\(38\)](https://doi.org/10.57800/faunitaxys-11(38))

Keith D. & Coache A., 2023. – Sur *Phaeochrous thomensis* Arrow, 1909 (Coleoptera, Scarabaeoidea, Hybosoridae). *Faunitaxys*, 11(39): 1–5. [https://doi.org/10.57800/faunitaxys-11\(39\)](https://doi.org/10.57800/faunitaxys-11(39))

Vlasak J. & Santos-Silva A., 2023. – Cerambycidae (Coleoptera) from Ecuador and Central America: new species and new country records. *Faunitaxys*, 11(40): 1–12. [https://doi.org/10.57800/faunitaxys-11\(40\)](https://doi.org/10.57800/faunitaxys-11(40))

- Gouverneur X. & Chemin G., 2023. – Description d'une nouvelle espèce du genre *Erythresthes* Thomson, 1864 du Laos (Coleoptera, Cerambycidae). *Faunitaxys*, 11(41): 1 – 3. [https://doi.org/10.57800/faunitaxys-11\(41\)](https://doi.org/10.57800/faunitaxys-11(41))
- Devesa S. & Vlasak J., 2023. – New species and new country records in Neotropical Cerambycidae (Coleoptera). *Faunitaxys*, 11(42): 1 – 10. [https://doi.org/10.57800/faunitaxys-11\(42\)](https://doi.org/10.57800/faunitaxys-11(42))
- Drumont A., Komiya Z., Do C., Toan Phan Q., Constant J. & Ripaille C., 2023. – Revision of the genus *Hystatoderes* Lameere, 1917 (Part I): species from Vietnam (Coleoptera, Cerambycidae, Prioninae, Anacolini). *Faunitaxys*, 11(43): 1 – 11. [https://doi.org/10.57800/faunitaxys-11\(43\)](https://doi.org/10.57800/faunitaxys-11(43))
- Le Tirant S. & Santos-Silva A., 2023. – Description of two new species of Cerambycidae (Coleoptera) and notes on *Macrodonia crenata* and *Deltaspis cyanipes*. *Faunitaxys*, 11(44): 1 – 13. [https://doi.org/10.57800/faunitaxys-11\(44\)](https://doi.org/10.57800/faunitaxys-11(44))
- Hennemann F. H., 2023. – *Theramenes letiranti* – a remarkable new species of Obriminae stick insects from Mindanao, Philippines (Insecta: Phasmatodea: Heteropterygidae). *Faunitaxys*, 11(45): 1 – 9. [https://doi.org/10.57800/faunitaxys-11\(45\)](https://doi.org/10.57800/faunitaxys-11(45))
- Háva J., 2023. – Study of the genus *Anthrenus* subgenus *Florilinus* from the Afrotropical Region (Coleoptera: Dermestidae: Megatominae). *Faunitaxys*, 11(46): 1 – 2. [https://doi.org/10.57800/faunitaxys-11\(46\)](https://doi.org/10.57800/faunitaxys-11(46))
- Laguerre M., Espinoza B.A., Janzen D.H. & Hallwachs W., 2023. – Revision of the genus *Cloesia* Hampson, 1900: description of five new species and recombination of two species (Noctuoidea Erebidae Arctiinae Lithosiini). *Faunitaxys*, 11(47): 1 – 21. [https://doi.org/10.57800/faunitaxys-11\(47\)](https://doi.org/10.57800/faunitaxys-11(47))
- Háva J. & Hodeček J., 2023. – A new species of *Cryptorhopalum* (Coleoptera: Dermestidae: Megatominae) from the Dominican Republic. *Faunitaxys*, 11(48): 1 – 3. [https://doi.org/10.57800/faunitaxys-11\(48\)](https://doi.org/10.57800/faunitaxys-11(48))
- Keith D., 2023. – Rectificatif concernant *Miridiba brancuccii* Keith, 2023 (Coleoptera: Scarabaeidae, Melolonthinae, Rhizotrogini). *Faunitaxys*, 11(49): 1. [https://doi.org/10.57800/faunitaxys-11\(49\)](https://doi.org/10.57800/faunitaxys-11(49))
- Cerda J.-A., 2023. – Description d'une nouvelle espèce du genre *Glaucostola*, de Guyane (Lepidoptera, Noctuoidea, Erebidae, Arctiinae, Arctiini, Phaenopterina). Treizième note. *Faunitaxys*, 11(50): 1 – 9. [https://doi.org/10.57800/faunitaxys-11\(50\)](https://doi.org/10.57800/faunitaxys-11(50))
- Gouverneur X., 2023. – Description d'une nouvelle espèce du genre *Saperdoglenea* Breuning, 1964 de Malaisie (Coleoptera, Cerambycidae). *Faunitaxys*, 11(51): 1 – 4. [https://doi.org/10.57800/faunitaxys-11\(51\)](https://doi.org/10.57800/faunitaxys-11(51))
- Qiu L., 2023. – New and little-known species of *Corymbitodes* from China (Coleoptera: Elateridae: Dendrometrinae). *Faunitaxys*, 11(52): 1 – 7. [https://doi.org/10.57800/faunitaxys-11\(52\)](https://doi.org/10.57800/faunitaxys-11(52))
- Háva J., 2023. – A new *Pseudotriphyllus* Reitter, 1880 species (Coleoptera: Mycetophagidae) from the Azores. *Faunitaxys*, 11(53): 1 – 2. [https://doi.org/10.57800/faunitaxys-11\(53\)](https://doi.org/10.57800/faunitaxys-11(53))
- Badry A., Saleh M., Sarhan M. M. H., Younes M., Lourenço W. R. & Ythier E., 2023. – A new species of *Leiurus* Ehrenberg (Scorpiones: Buthidae) from Sinai, Egypt and comments on its relationships with *L. quinquestriatus* and *L. hebraeus* using morphological and molecular evidence. *Faunitaxys*, 11(54): 1 – 10. [https://doi.org/10.57800/faunitaxys-11\(54\)](https://doi.org/10.57800/faunitaxys-11(54))
- Zhao M.-Z. & Pham P.V., 2023. – Two new species of the genus *Anomala* Samouelle from Vietnam and Laos, with a checklist of Vietnamese *Anomala* (Coleoptera: Scarabaeidae: Rutelinae). *Faunitaxys*, 11(55): 1 – 9. [https://doi.org/10.57800/faunitaxys-11\(55\)](https://doi.org/10.57800/faunitaxys-11(55))
- Santos-Silva A. & Botero J. P., 2023. – Taxonomic and geographical notes on *Leptostylus* LeConte, 1852 (Coleoptera, Cerambycidae, Lamiinae, Acanthocini) with the descriptions of two new species. *Faunitaxys*, 11(56): 1 – 9. [https://doi.org/10.57800/faunitaxys-11\(56\)](https://doi.org/10.57800/faunitaxys-11(56))
- Lourenço W. R. & Velten J., 2023. – A second species of *Archaeoscorpions* Lourenço, 2015 from Cretaceous Burmese amber (Scorpiones: Palaeoescorpionidae). *Faunitaxys*, 11(57): 1 – 4. [https://doi.org/10.57800/faunitaxys-11\(57\)](https://doi.org/10.57800/faunitaxys-11(57))
- Rubio G.D., Stolar C.E., Baigorria J.E.M. & Baptista R.L.C., 2023. – Description of two new species of jumping spider *Colonus* F. O. Pickard-Cambridge, 1901 (Araneae: Salticidae) from Brazil and Argentina. *Faunitaxys*, 11(58): 1 – 10. [https://doi.org/10.57800/faunitaxys-11\(58\)](https://doi.org/10.57800/faunitaxys-11(58))

### Faunitaxys est échangée avec les revues suivantes (« print versions ») :

- Annali del Museo Civico di Storia Naturale G. Doria (Italie)
- Boletín de la Asociación española de Entomología (Espagne)
- Boletín de la Sociedad Andaluza de Entomología (Espagne)
- Bollettino del Museo di Storia Naturale di Venezia (Italie)
- Bulletin de la Société linnéenne de Lyon (France)
- Bulletin of Insectology (Italie)
- Heteropterus Rev. Entomol. (Espagne)
- Israel Journal of Entomology (Israël)
- Klapalekiana (République Tchèque)
- Koleopterologische Rundschau (Allemagne)
- Memorie del Museo Civico di Storia Naturale di Verona (Italie)
- Nova Supplementa Entomologica (Allemagne)
- Proceedings of the Entomological Society of Washington (USA)
- Revue suisse de Zoologie (Suisse)
- Spixiana (Allemagne)
- Stuttgarter Beiträge zur Naturkunde A, Biologie (Allemagne)
- Zoosystematica Rossica (Russie)

# Faunitaxys

*Volume 11, Numéro 59, Septembre 2023*

## SOMMAIRE

Une nouvelle espèce du genre *Lepturges* (*Lepturges*) Bates, du Brésil (Coleoptera, Cerambycidae, Lamiinae).

*Antonio Santos-Silva & Miguel A. Monné* . . . . . 1 – 4

## CONTENTS

A new species and new Brazilian state record in *Lepturges* (*Lepturges*) Bates (Coleoptera, Cerambycidae, Lamiinae).

*Antonio Santos-Silva & Miguel A. Monné* . . . . . 1 – 4



### *Illustration de la couverture :*

Gérard L. Tavakilian at the Muséum national d'Histoire naturelle, Paris, France.

### Crédits:

**Antonio Santos-Silva** : Fig. 1-7.

**Eugenio H. Nearns**: Couverture.