



**HAL**  
open science

## Characterization of Microtubule Lattice Heterogeneity by Segmented Subtomogram Averaging

Clément Bousquet, John M Heumann, Denis Chrétien, Charlotte Guyomar

► **To cite this version:**

Clément Bousquet, John M Heumann, Denis Chrétien, Charlotte Guyomar. Characterization of Microtubule Lattice Heterogeneity by Segmented Subtomogram Averaging. *Bio-Protocol*, 2023, 13 (14), 10.21769/BioProtoc.4723 . hal-04197848

**HAL Id: hal-04197848**

**<https://hal.science/hal-04197848>**

Submitted on 11 Oct 2023

**HAL** is a multi-disciplinary open access archive for the deposit and dissemination of scientific research documents, whether they are published or not. The documents may come from teaching and research institutions in France or abroad, or from public or private research centers.

L'archive ouverte pluridisciplinaire **HAL**, est destinée au dépôt et à la diffusion de documents scientifiques de niveau recherche, publiés ou non, émanant des établissements d'enseignement et de recherche français ou étrangers, des laboratoires publics ou privés.

# Characterization of Microtubule Lattice Heterogeneity by Segmented Subtomogram Averaging

Clément Bousquet<sup>1</sup>, John M. Heumann<sup>2</sup>, Denis Chrétien<sup>1</sup>, and Charlotte Guyomar<sup>1,\*</sup>

<sup>1</sup>Univ Rennes, CNRS, IGDR (Institut de génétique et développement de Rennes)-UMR 6290, F-35000 Rennes, France

<sup>2</sup>Department of Molecular, Cellular and Developmental Biology, University of Colorado Boulder, Boulder, Colorado 80309, USA

\*For correspondence: [charlotte.guyomar@univ-rennes1.fr](mailto:charlotte.guyomar@univ-rennes1.fr)

## Abstract

Microtubule structure is commonly investigated using single-particle analysis (SPA) or subtomogram averaging (STA), whose main objectives are to gather high-resolution information on the  $\alpha\beta$ -tubulin heterodimer and on its interactions with neighboring molecules within the microtubule lattice. The maps derived from SPA approaches usually delineate a continuous organization of the  $\alpha\beta$ -tubulin heterodimer that alternate regularly head-to-tail along protofilaments, and that share homotypic lateral interactions between monomers ( $\alpha$ - $\alpha$ ,  $\beta$ - $\beta$ ), except at one unique region called the seam, made of heterotypic ones ( $\alpha$ - $\beta$ ,  $\beta$ - $\alpha$ ). However, this textbook description of the microtubule lattice has been challenged over the years by several studies that revealed the presence of multi-seams in microtubules assembled in vitro from purified tubulin. To analyze in deeper detail their intrinsic structural heterogeneity, we have developed a segmented subtomogram averaging (SSTA) strategy on microtubules decorated with kinesin motor-domains that bind every  $\alpha\beta$ -tubulin heterodimer. Individual protofilaments and microtubule centers are modeled, and sub-volumes are extracted at every kinesin motor domain position to obtain full subtomogram averages of the microtubules. The model is divided into shorter segments, and subtomogram averages of each segment are calculated using the main parameters of the full-length microtubule settings as a template. This approach reveals changes in the number and location of seams within individual microtubules assembled in vitro from purified tubulin and in *Xenopus* egg cytoplasmic extracts.

## Key features

- This protocol builds upon the method developed by J.M. Heumann to perform subtomogram averages of microtubules and extends it to divide them into shorter segments.
- Microtubules are decorated with kinesin motor-domains to determine the underlying organization of its constituent  $\alpha\beta$ -tubulin heterodimers.
- The SSTA approach allows analysis of the structural heterogeneity of individual microtubules and reveals multi-seams and changes in their number and location within their shaft.

**Keywords:** Microtubules,  $\alpha\beta$ -tubulin heterodimer, A- and B-microtubule lattices, Multi-seams, Kinesin motor-domain decoration, Purified tubulin, *Xenopus* egg cytoplasmic extracts, Single- and dual-axis cryo-electron tomograms, Segmented subtomogram averaging

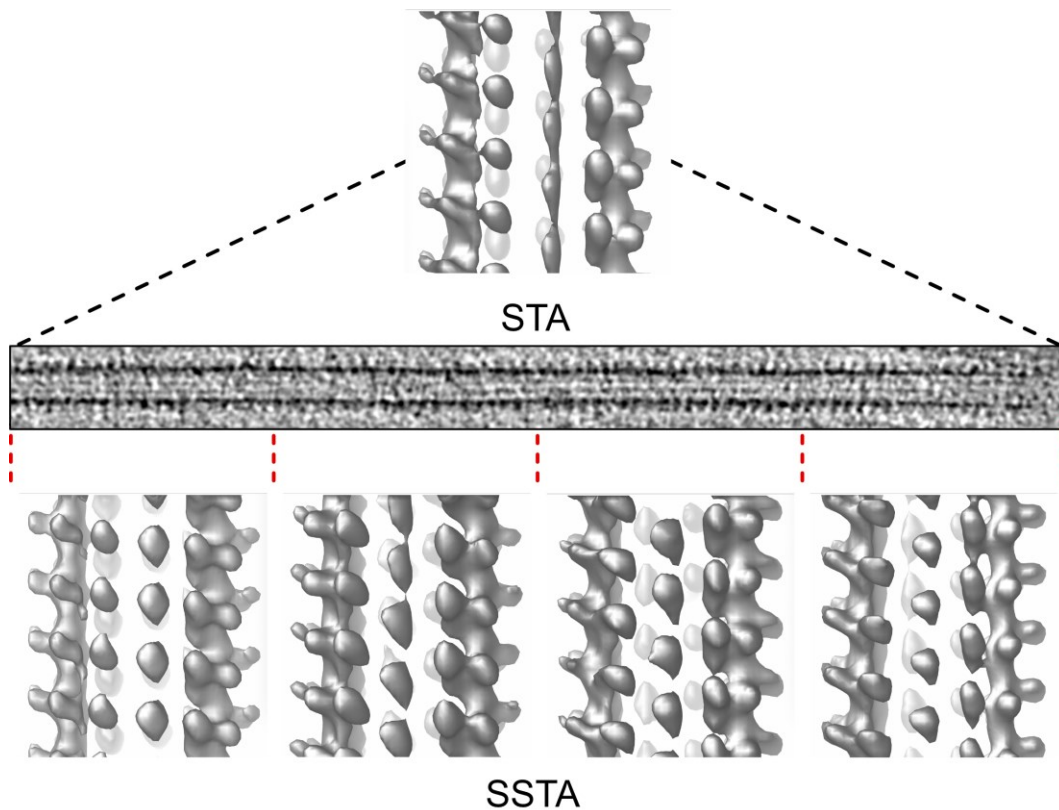
**This protocol is used in:** eLife (2022), DOI: 10.7554/eLife.83021

Cite as: Bousquet, C. et al. (2023). Characterization of Microtubule Lattice Heterogeneity by Segmented Subtomogram Averaging. *Bio-protocol* 13(14): e4723. DOI: 10.21769/BioProtoc.4723.

Copyright: © 2023 The Authors; exclusive licensee Bio-protocol LLC.

This is an open access article under the CC BY 4.0 license (<https://creativecommons.org/licenses/by/4.0/>).

## Graphical overview



## Background

Microtubules are essential components of the cytoskeleton, built from the  $\alpha\beta$ -tubulin heterodimer that shares both heterotypic (A-type;  $\alpha\beta$ ,  $\beta\alpha$ ) and homotypic (B-type;  $\alpha\alpha$ ,  $\beta\beta$ ) lateral interactions within their shaft. While the B-type lattice predominates in microtubules assembled *in vitro*, multi-seams of the A-type occur frequently in microtubules assembled from purified tubulin (Kikkawa et al., 1994; Sosa and Milligan, 1996; Sosa et al., 1997; Dias and Milligan, 1999; des Georges et al., 2008; Debs et al., 2020). Conversely, very little is known concerning the organization of the  $\alpha\beta$ -tubulin heterodimer within cytoplasmic microtubules. Using a segmented subtomogram averaging (SSTA) strategy on microtubules assembled *in vitro* from purified tubulin and in *Xenopus* egg cytoplasmic extracts, we found that both the location and number of seams vary within individual microtubules, leaving holes of one to a few subunits size inside their shaft (Guyomar et al., 2022). This observation has consequences for our understanding of microtubule dynamics, since it implies that tubulin can engage unique lateral interactions without longitudinal ones at the microtubule growing end, and provides a molecular basis to the recent observation that tubulin exchange does not happen uniquely at microtubules ends, but also in their shaft (Théry and Blanchoin, 2021). By contrast to single-particle analysis (SPA)- and full-length subtomogram averaging (STA)-based approaches, where several thousands of images are averaged to obtain one to a few structures supposedly representatives of the whole sample, SSTA addresses the structural heterogeneity of individual microtubule lattices, but with no aim to gather high-resolution information on the  $\alpha\beta$ -tubulin heterodimer. Ideally, localization of changes in lattice types and holes within individual microtubules would be better described without averaging; however, we found that the imaging artifacts inherent to cryo-electron tomography, as well as denaturation of the specimen at the air–water interfaces, limit their characterization in the raw data (Guyomar et al., 2022). While those limitations do not depend on the instrument used, high-end cryo-electron microscopes equipped with modern direct electron detection cameras may produce cryo-electron tomograms with a better signal-to-noise ratio that should permit a reduction in segment

Cite as: Bousquet, C. et al. (2023). Characterization of Microtubule Lattice Heterogeneity by Segmented Subtomogram Averaging. *Bio-protocol* 13(14): e4723. DOI: 10.21769/BioProtoc.4723.

size, and hence a finer sampling of the structural heterogeneity of the microtubule lattice.

At the specimen level, SSTA requires decoration of the microtubules with a protein that binds every  $\alpha\beta$ -tubulin heterodimer, such as kinesin motor-domains. While this is easily performed in open systems such as microtubules assembled in vitro from purified components or in *Xenopus* egg cytoplasmic extracts, it requires removing the membrane with detergents for whole cells (Kikkawa et al., 1994; McIntosh et al., 2009). Hence, new strategies will have to be envisioned to overcome this limitation and explore the structural heterogeneity of microtubules in intact cells.

## Equipment

1. MacBook Pro (16 inches, 2021), Apple M1 Max 3.22 GHz, LPDDR5 RAM 64 Go, SSD 4 To, macOS version 13.0.1 (Apple Inc.)

*Notes:*

- a. *Since IMOD and PEET are multi-platform, the procedure can be performed on computers running macOS, Windows, or Linux operating systems.*
  - b. *We recommend at least one CPU with four physical cores and 16 GB of RAM.*
2. Extended keyboard with numeric keypad (Apple Inc.).  
*Note: If using a MacBook Pro without external keyboard, we recommend using a numerical keypad to enter values in the graphical user interfaces of IMOD and PEET.*
  3. M1 wireless three-button mouse (Satechi)

## Software and datasets

1. IMOD (v4.12.30, 2022-10-13), University of Colorado, Boulder (<https://bio3d.colorado.edu/imod/>) (Kremer et al., 1996; Mastronarde, 1997).
2. PEET (v1.16.0 alpha, 2022-10-13), University of Colorado, Boulder (<https://bio3d.colorado.edu/PEET/>) (Nicastro et al., 2006; Heumann et al., 2011).
3. Cryo-electron tomogram of microtubules assembled in vitro from purified porcine brain tubulin in the presence of GMPCPP ([https://ftp.ebi.ac.uk/empiar/world\\_availability/11264/data/reconstructed\\_tomogram/GMPCPP\\_tomoFig5\\_bin4.mrc](https://ftp.ebi.ac.uk/empiar/world_availability/11264/data/reconstructed_tomogram/GMPCPP_tomoFig5_bin4.mrc)) (Guyomar et al., 2022). Other datasets are available for microtubules assembled in the presence of GMPCPP (EMPIAR-11264), GTP (EMPIAR-11253), and in *Xenopus* egg cytoplasmic extracts (EMPIAR-11263).

## Procedure

### A. Preparation of the working directory

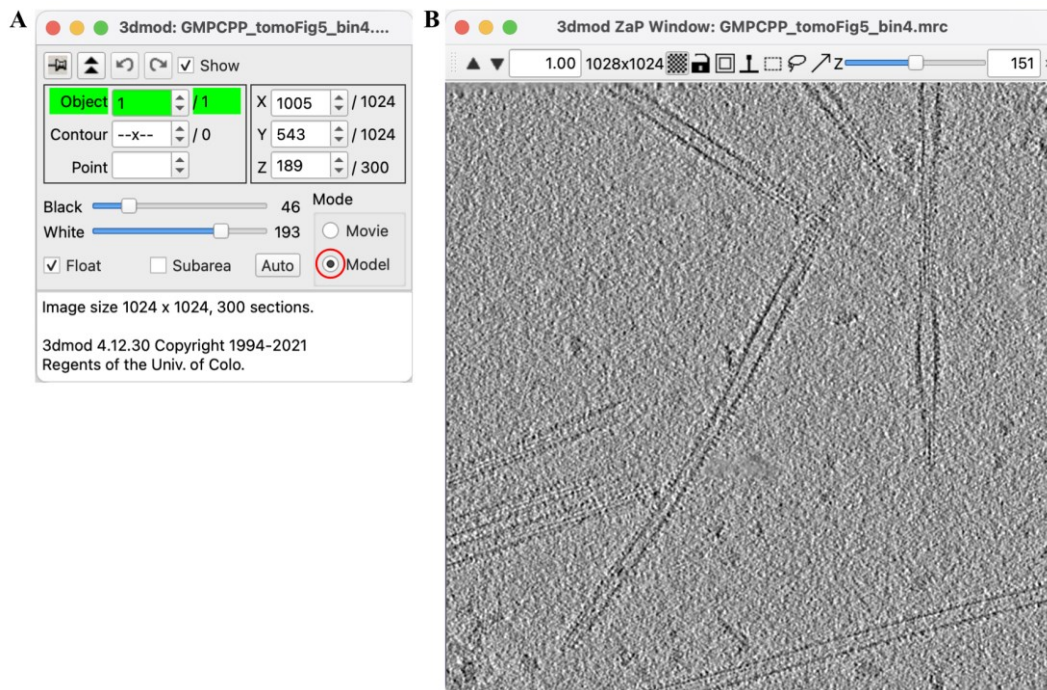
1. Create a directory named *tomogram*.
2. Download the tomogram GMPCPP\_tomoFig5\_bin4.mrc deposited on the EMPIAR database (access code 11264, see the link above) and save it to the *tomogram* folder.

### B. Modeling the protofilament path with 3dmod

1. Open a terminal window and enter “cd *your\_path*/tomogram.”
2. Enter “3dmod GMPCPP\_tomoFig5\_bin4.mrc MT\_Model.mod.” The 3dmod Information Window opens (Figure 1A) together with the ZaP window displaying the middle slice (151) of the tomogram (Figure 1B).

Cite as: Bousquet, C. et al. (2023). Characterization of Microtubule Lattice Heterogeneity by Segmented Subtomogram Averaging. *Bio-protocol* 13(14): e4723. DOI: 10.21769/BioProtoc.4723.

3. Select the *Model* mode in the 3dmod Information Window (Figure 1A, red circle).  
*Note: Regularly save the model during the modeling of the protofilament and microtubule paths using the short-cut key S.*



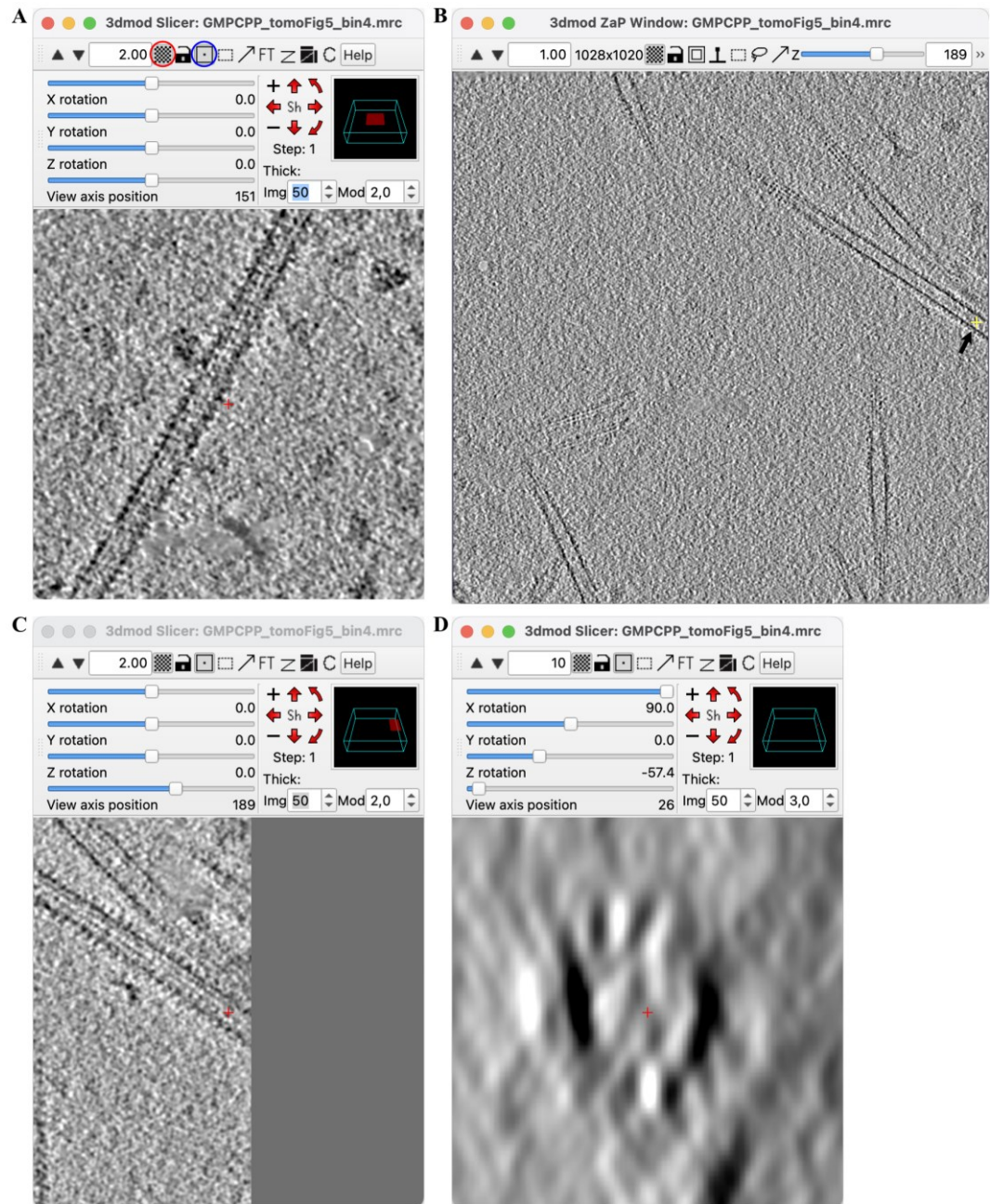
**Figure 1. Tomogram visualization.** (A) 3dmod Information Window. Selection of the *Model* mode (red circle). (B) 3dmod ZaP Window.

4. On the main menu, select Image > Slicer (Figure 2A), click on the *Checkerboard* button to activate high-resolution drawing (red circle), on the *Centering* button (blue circle) to associate the Slicer and ZaP windows, enter 50 in the *Thick: Img* text box, and press Enter.
5. In the ZaP window, scroll up to Slice 189 and click in the middle of the microtubule at the position marked by a yellow cross in Figure 2B (arrow). The corresponding microtubule segment is presented in the Slicer Window (Figure 2C).
6. In the Slicer Window, position the X rotation slider to 90.0, the Z rotation slider to -57.4, and adjust the zoom text box to 10.00 with the up arrow of the slicer (Figure 2D). The microtubule is displayed in cross section and its protofilaments are well individualized.

*Notes:*

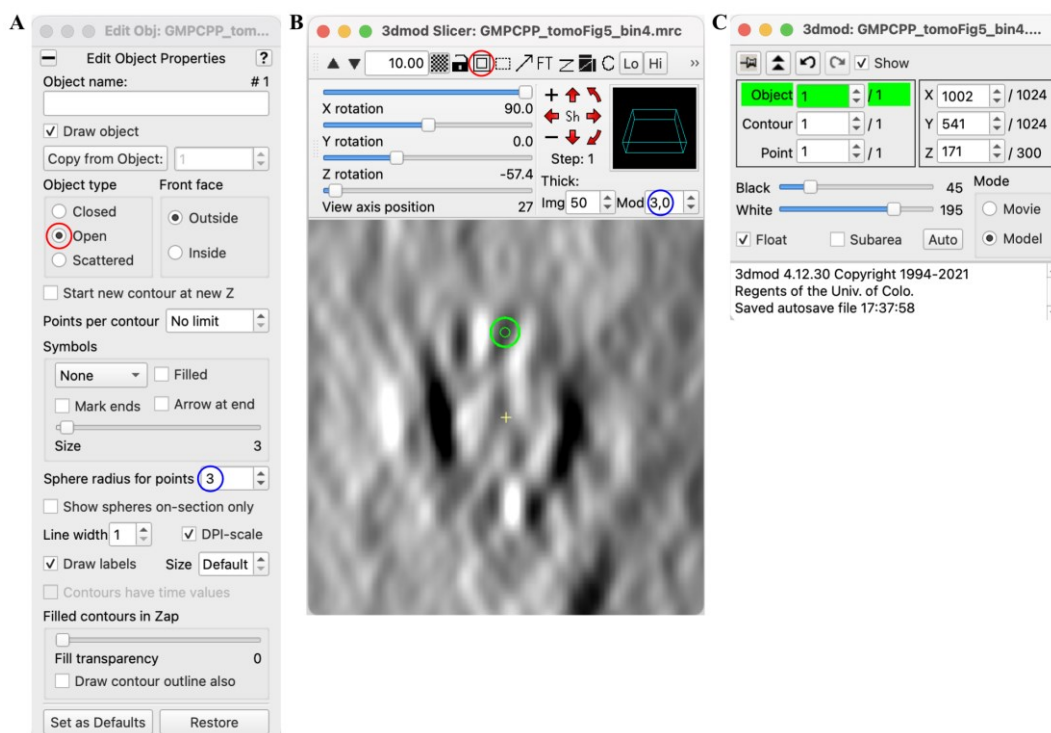
- a. *The appropriate zoom level in the Slicer may vary depending on the screen resolution. A 10× zoom is appropriate for a MacBook Pro retina display, which translates to a 5× zoom on a classical display.*
- b. *If the microtubule is not oriented parallel to the plane of the tomogram, which happens frequently in thick ice layers, adjust the X rotation slicer to maximize the contrast of the protofilaments in cross-section.*
- c. *We advise modeling consistently a microtubule from the bottom towards the top of the tomogram, especially with microtubules showing a high degree of curvature in the XY plane.*





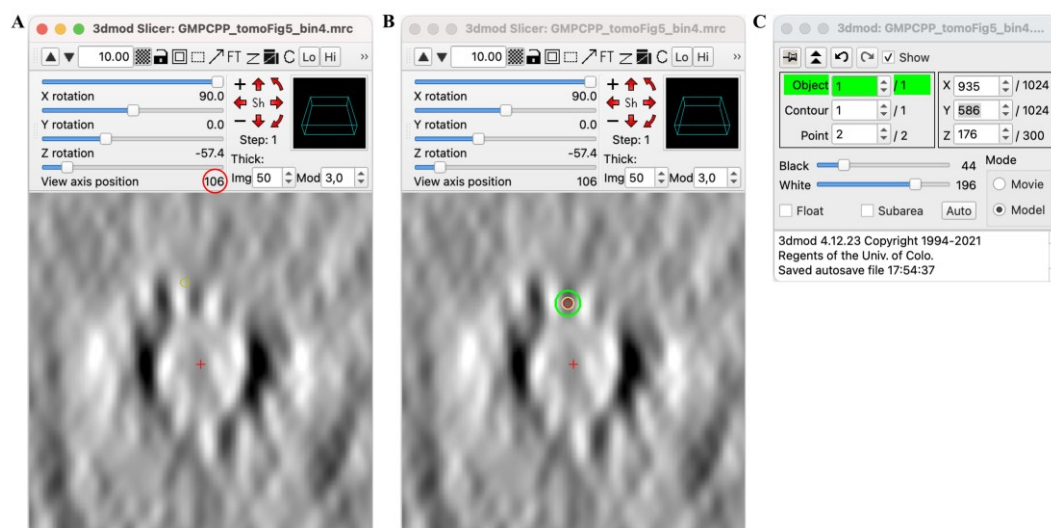
**Figure 2. Microtubule selection.** (A) Tomogram visualized in the Slicer. (B) Selection of the microtubule (arrow). (C) Microtubule in (B) visualized in the Slicer averaged over 50 slices. (D) Microtubule oriented in cross-section after rotation of  $90^\circ$  around the X-axis and  $-57.4^\circ$  around the Z-axis.

7. On the main menu, select Edit > Object > Type... In the window that opens (Figure 3A), click on *Object type: Open* (red circle) and adjust the *Sphere radius for points* to 3 (blue circle).
8. In the Slicer (Figure 3B) unselect the *Centering* button (red circle) and click on the top protofilament with the middle button of the mouse. This creates a new contour at this position (green circle) and in the 3dmod Information Window (Figure 3C: Object 1, Contour 1, Point 1). Increase the thickness of the point by adjusting the *Thick: Mod* to 3.0 (Figure 3B, blue circle).



**Figure 3. Creation of a protofilament model.** (A) Configuration of the *Object type* menu. (B) Creation of the first point. (C) Information window showing a first contour and a first point for Object 1.

9. Press and maintain the Page Up key of the keyboard to scroll along the microtubule axis until *View axis position* indicates 106 (Figure 4A, red circle).  
*Note: On the MacBook Pro keyboard, the Page Up and Down can be accessed by pressing the function key together with the up and down arrow keys.*



**Figure 4. Modeling the protofilament path.** (A) Microtubule cross-section at *View axis position* 106. (B) Addition of Point 2 on the same protofilament as in Figure 3B. (C) 3dmod Information Window showing a second point in Contour 1, Object 1.

10. Create a new point by clicking with the middle mouse button on the protofilament (Figure 4B). This creates a new point 2 for Object 1, Contour 1 (Figure 4C).

Notes:

- a. During this procedure, it may be necessary to readjust the X and Z rotation sliders to keep the microtubule in cross-section.
- b. Points can be repositioned by clicking with the right button of the mouse on the image.
- c. X, Y, and Z coordinates may slightly vary with respect to the one shown in the Figures and those listed in Table 1.

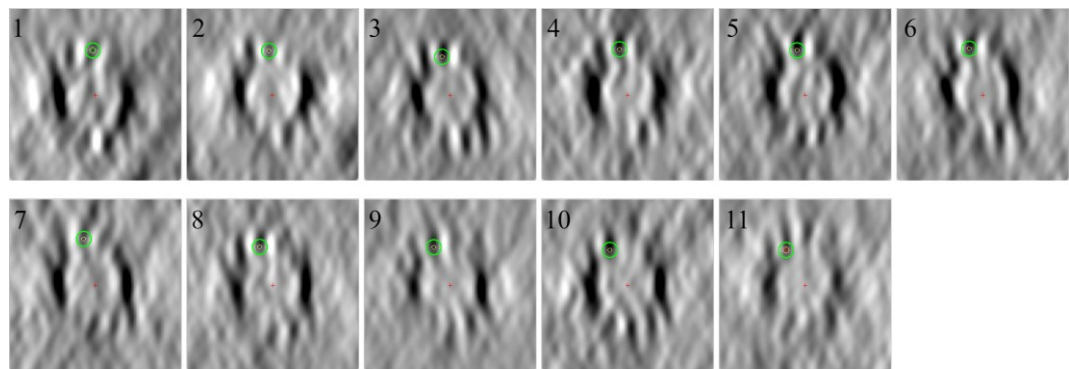
**Table 1. Protofilament model points**

Point	1	2	3	4	5	6	7	8	9	10	11
X	1002	936	867	802	733	664	597	538	470	405	342
Y	541	586	630	672	718	761	806	845	889	931	972
Z	171	175	176	174	171	163	154	148	142	137	134
View	27	106	187	264	347	428	508	578	659	736	811

The X, Y, Z, and View axis position (View) are indicated for each point in the model.

11. Continue adding points at View axis positions listed in Table 1 up to the end of the microtubule, following the above procedure. Here, 11 points were added (Figure 5).

Note: During this procedure, recenter the microtubule cross-section with the left mouse key.



**Figure 5. Microtubule cross-sections at positions listed in Table 1**

Notes:

- a. Note that the protofilaments gradually rotate anticlockwise, since they have a  $\sim 0.7^\circ$  left-handed skew. Note also that setting the X-axis slider to  $-90^\circ$  instead of  $+90^\circ$  would have produced a clockwise rotation of the protofilaments.
- b. If the protofilament rotates up to the edge of the microtubule cross-section where it cannot be individualized anymore, add a new contour (Edit > Contour > New), and click on another protofilament. Several contours may be necessary to model a long microtubule with skewed protofilaments.

### C. Modeling the microtubule center path

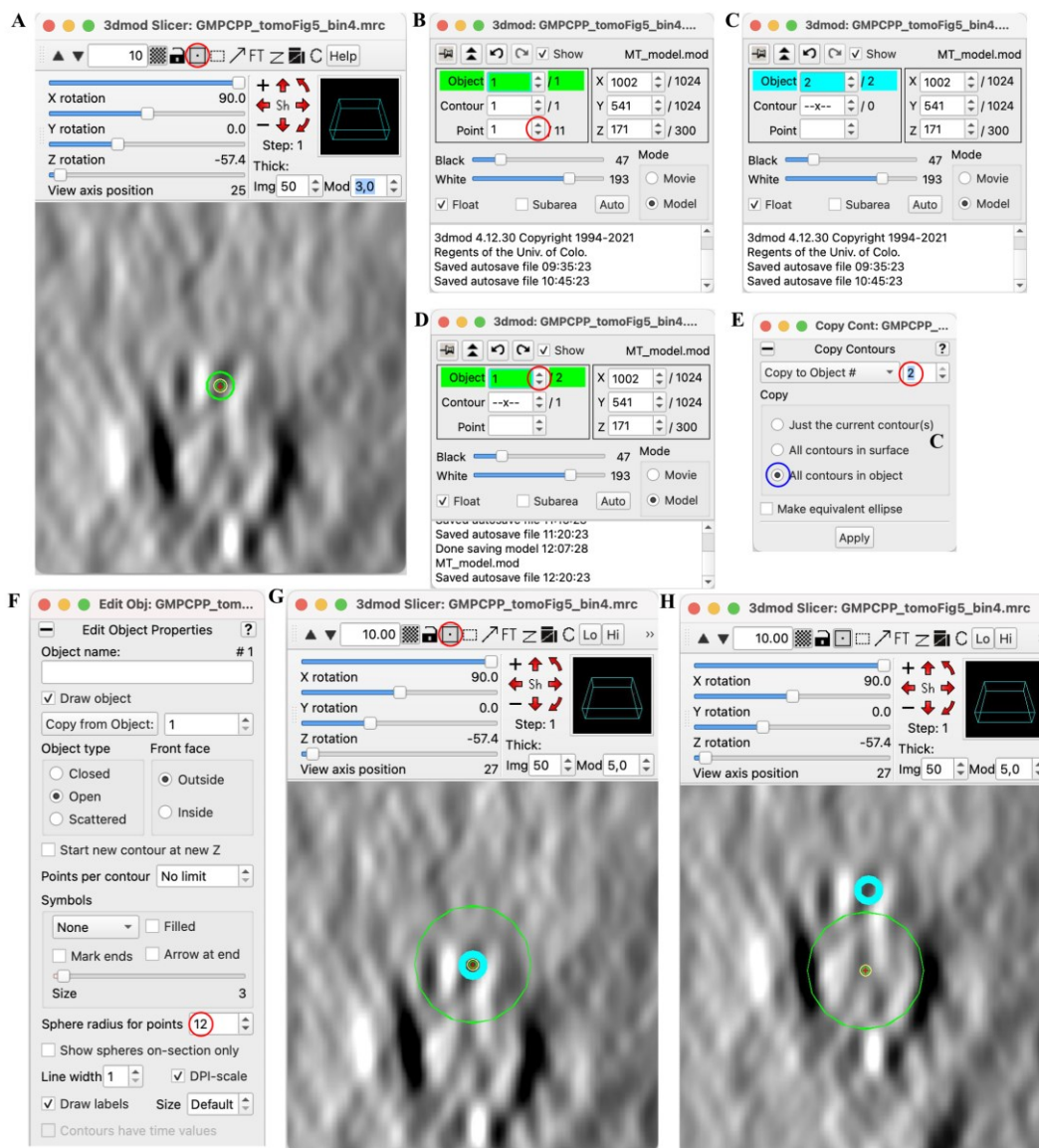
1. In the Slicer Window, select the *Centering button* (Figure 6A, red circle), and in the Information Window, select point 1 in Contour 1 of Object 1 (Figure 6B).
2. In the main menu, select Edit > Object > New. Object 2 (in cyan) is created in the Information Window (Figure 6C).
3. Select Object 1 in the Information Window with the arrow button (Figure 1D, red circle), and in the main menu select Edit > Contour > Copy...



4. In the *Copy Contour* menu that opens, select *Copy to object #2* (red circle) and *All contours in object* (blue circle), then click on *Apply* (Figure 6E).
5. In the Edit object menu (Figure 6F), increase the *Sphere radius for points* to 12 (red circle). Note the increase of the sphere diameter in the Slicer (Figure 6G).

Notes:

- a. Another method to set the sphere diameter is to select *Edit > Point > Size...* and in the *Surf/Cont/Pt:* menu that opens, select *Set* with mouse wheel. The sphere diameter can be precisely adjusted using the mouse wheel.
- b. The 'Thick: Mod' can be increased to 5 to improve the visibility of Object 1 Points (green circle).



**Figure 6. Microtubule center modeling.** (A) Selection of the *Centering* button. (B) Selection of Point 1 in Object 1 Contour 1. (C) Selection of Object 2. (D) Selection of Object 1. (E) Copy Contours of Object 1 to Object 2. (F) Increase of the sphere radius of Point 1 in Object 1. (G) Colocalization of Points 1 of Objects 1 (green circle) and 2 (cyan circle). (H) Centering of Point 1 of Object 1 with the right mouse button.

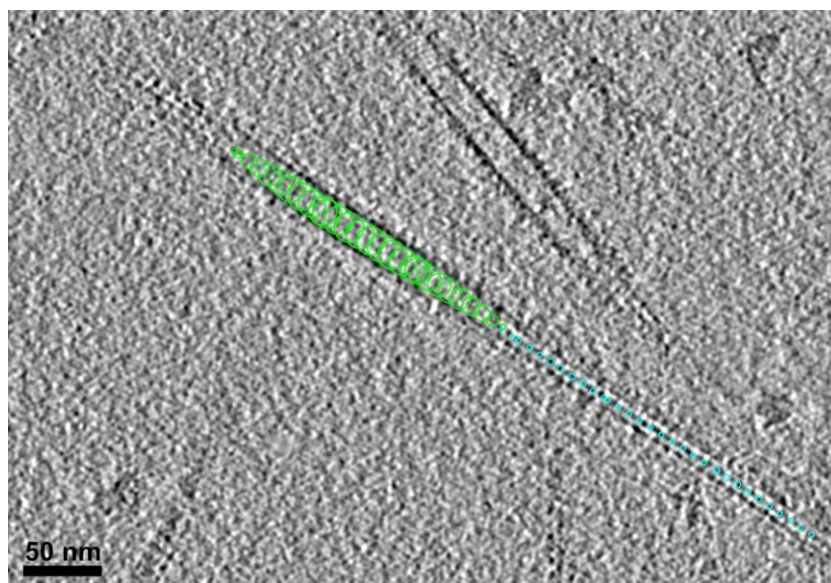
6. In the Information Window, select Contour 1 and point 1 of Object 1 (as in Figure 6B).
7. In the Slicer, right-click in the middle of the microtubule to center the point. Adjust the position of the point with the right click if necessary (Figure 6H).
8. Repeat this operation for every point in Object 1 Contour 1.  
*Note: If several contours have been created, repeat the operation for all contours.*
9. Save the model (short key S).

#### D. Adding points spaced every ~8 nm in the model

1. In the terminal, enter “addModPts MT\_Model.mod 10 T.” A new file named “MT\_Model\_PtsAdded.mod” is created with points spaced every ~8 nm along the microtubule. Note the total number of points created as indicated in the terminal window (here, 81 points).

*Notes:*

- a. *The voxel size of the tomogram is 8.3 Å. This can be verified using the command “header GMPCPP\_tomoFig5\_bin4.mrc.” The command “addModPts MT\_model.mod 10 T” places points every  $10 \times 0.83$  nm along the microtubule, i.e., every ~8 nm, which corresponds to the kinesin motor-domain repeat along protofilaments.*
- b. *To visualize the new model, select File > Open Model and select the file MT\_model\_PtsAdded.mod (Figure 7).*



**Figure 7. Addition of points spaced every ~8 nm on the model.** The points of Object 1 (green circles) follow the microtubule center path, and those of Object 2 (cyan circles) follow the protofilament path.

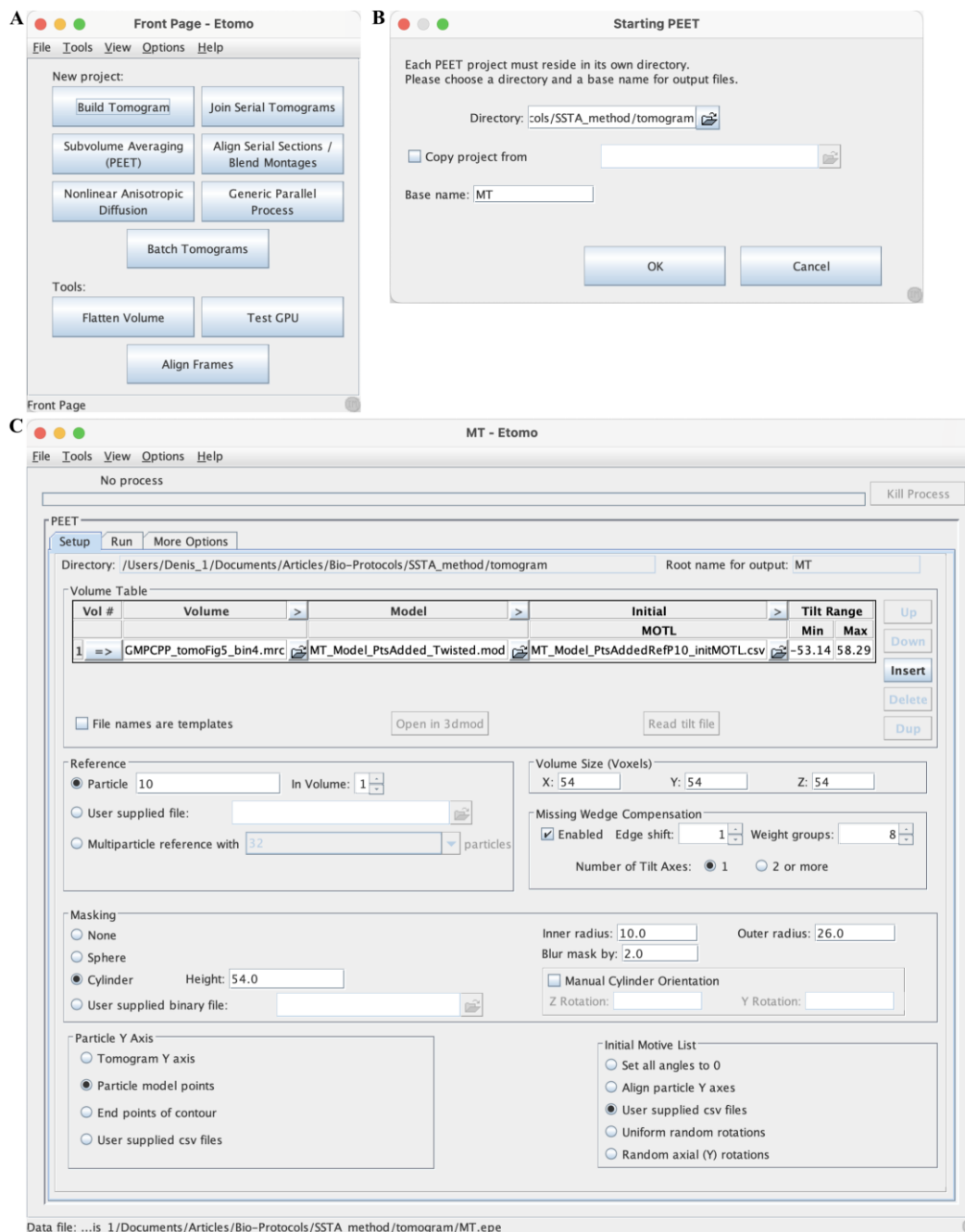
2. In the terminal, enter “modTwist2EM MT\_Model\_PtsAdded.mod 10 1.” Two new files are created: a model file named “MT\_Model\_PtsAdded\_Twisted.mod” and a motive list named “MT\_Model\_PtsAddedRefP10\_initMOTL.csv.”

*Notes:*

- a. *To list the files present in the working directory, enter “ls” on the terminal.*
  - b. *The two numerical values in the modTwist2EM command are the point (10) and contour (1) numbers. The sub-volume extracted at this position will be used as the initial reference in the subtomogram averaging procedure. Hence, this reference point can be chosen based on the quality of the cross-section of the microtubule at any location along the microtubule.*
3. In the main menu, select 3dmod > Quit 3dmod.

## E. Subtomogram average of the full-length microtubule

1. In the terminal, enter “etomo” and click on Subvolume Averaging (PEET) (Figure 8A).

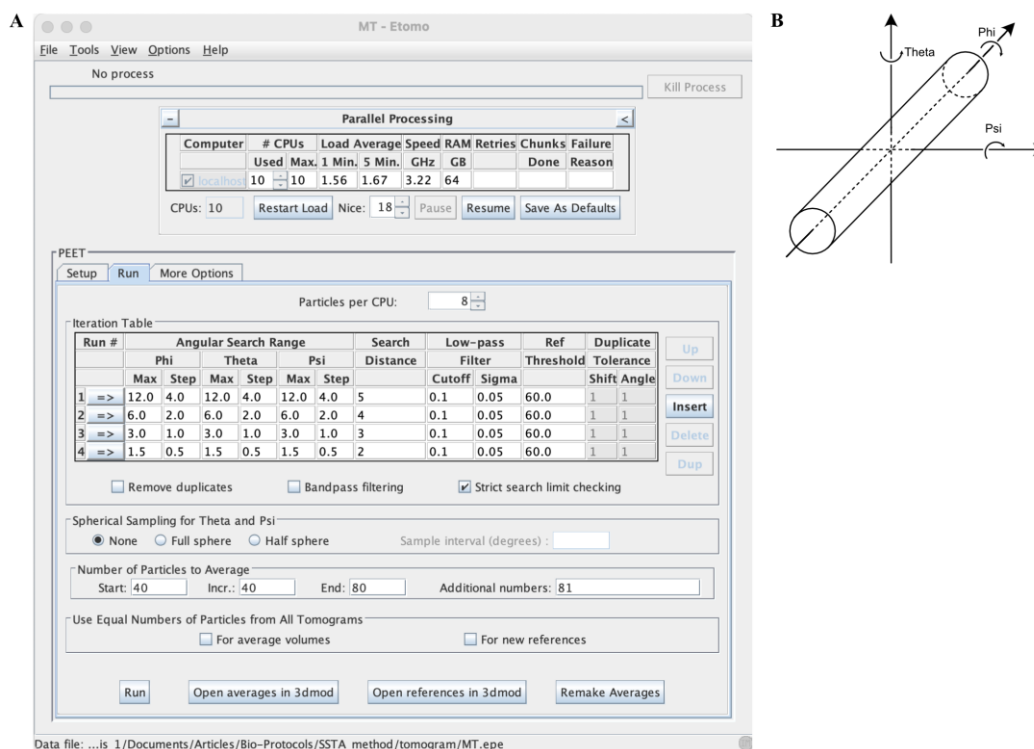


**Figure 8. Configuration of the Setup tab of Etomo.** (A) Front page of Etomo. (B) Starting PEET menu. (C) Setup tab.

2. In the Starting PEET panel that opens, enter “MT” in the *Base name*: textbox and click on OK.
3. Configure the Setup tab of the PEET interface as in Figure 8C:
  - a. Volume Size (Voxels): enter 54 in the X, Y, and Z text boxes.

*Note: The volume size can be specified as the diameter of the microtubule (in pixels) plus twice the*

- maximum search distance at any iteration.
  - b. Missing Wedge Compensation: Select *Enabled*. Let the *Edge shift* and *Weight groups* default values to 1 and 8, respectively, and the *Number of Tilt Axes* to 1.  
*Note: For dual-axis tomograms, click on 2 or more and see General note 2.*
  - c. Masking: Select *Cylinder* and set the following parameters: Height: 54, Inner radius: 10, Outer radius: 26, Blur mask by: 2.
  - d. Particle Y Axis: Select *Particle model points*.
  - e. Initial Motive List > Select *User supplied csv files*.
  - f. Volume Table: Click on *Insert*.
  - g. Open a file chooser by selecting the Folder icon under *Volume* and select the “GMPCPP\_tomoFig5\_bin4.mrc” file.
  - h. Open a file chooser under *Model* and select the “MT\_Model\_PtsAdded\_Twisted.mod” file.
  - i. Open a file chooser under *Initial MOTL* and select the “MT\_Model\_PtsAddedRefP10\_initMOTL.csv” file.
  - j. Under *Tilt Range*, set the min to -53.14 and the max to 58.29.  
*Note: These angles can be read from the tomogram.tlt file generated during 3D reconstruction of the tomogram. If present, click on the => button under Vol # (the background of the line turns cyan) and click on Read tilt file, then select the tomogram.tlt file. This populates the Tilt Range with the minimal and maximal tilt angles of the series.*
  - k. Reference: Enter 10 in the *Particle* text box and let the default *In Volume* value to 1.  
*Note: Resize the MT-Etomo panel if necessary.*
4. Configure the *Run* tab as in Figure 9:



**Figure 9. Configuration of the Run tab of Etomo.** (A) Iteration runs. (B) Rotations used to adjust the subvolumes with the reference.

- a. Parallel Processing: in the # CPUs Used text box, allocate the maximum as indicated in the Max text box (here, 10).



- b. Particles per CPU: divide the number of particles by the number of CPUs on your computer (here, 8).
- c. In the Iteration table, unselect *Remove duplicates*, *Bandpass filtering*, and select *Strict search limit*.
- d. Iteration Table: Enter Max = 12 and Step = 4 in the Phi, Theta, and Psi columns. Fix the *Search distance* to 5, the *Low-pass Filter Cutoff* to 0.1, the *Low-pass Filter Sigma* to 0.05, and the *Ref Threshold* to 60.

Notes:

- i. Since we have selected the Particle Y axis as Particle model points in the Setup tab, Phi turns around the microtubule (Y) axis, Theta turns in plane, and Psi turns out off plane (Figure 9B).
- ii. Phi has been set to 12° (i.e., 24° since the search occurs in both directions) to keep the angular search restricted to an interval between two protofilaments. This number might be adjusted using  $360^\circ/2N$ , where N is the protofilament number.
- e. Select line 1 by clicking on the => button, click on the Dup button to duplicate the line, and change the Max and Step values by dividing by 2 those of the first run.
- f. Decrease the Search Distance by one.
- g. Reiterate steps (e–f) to implement 4 Runs.
- h. Spherical Sampling for Theta and Psi: Select None.
- i. Number of Particles to Average: Set the Start and Incr to 40, the End to 80, and the Additional numbers to 81.

Notes:

- i. Using this strategy, three maps will be calculated with 40, 80, and 81 particles.
- ii. Adjust these numbers to the total number of particles generated by the addModPts command if needed.

5. Configure the More Options table (Figure 10)

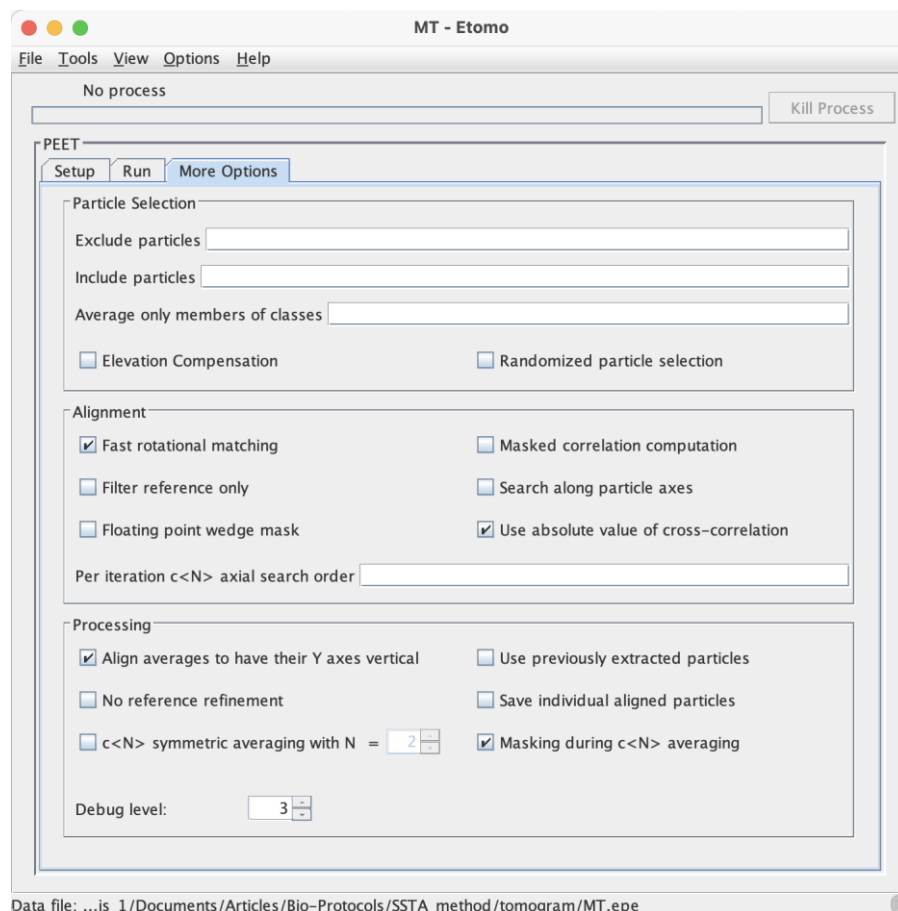
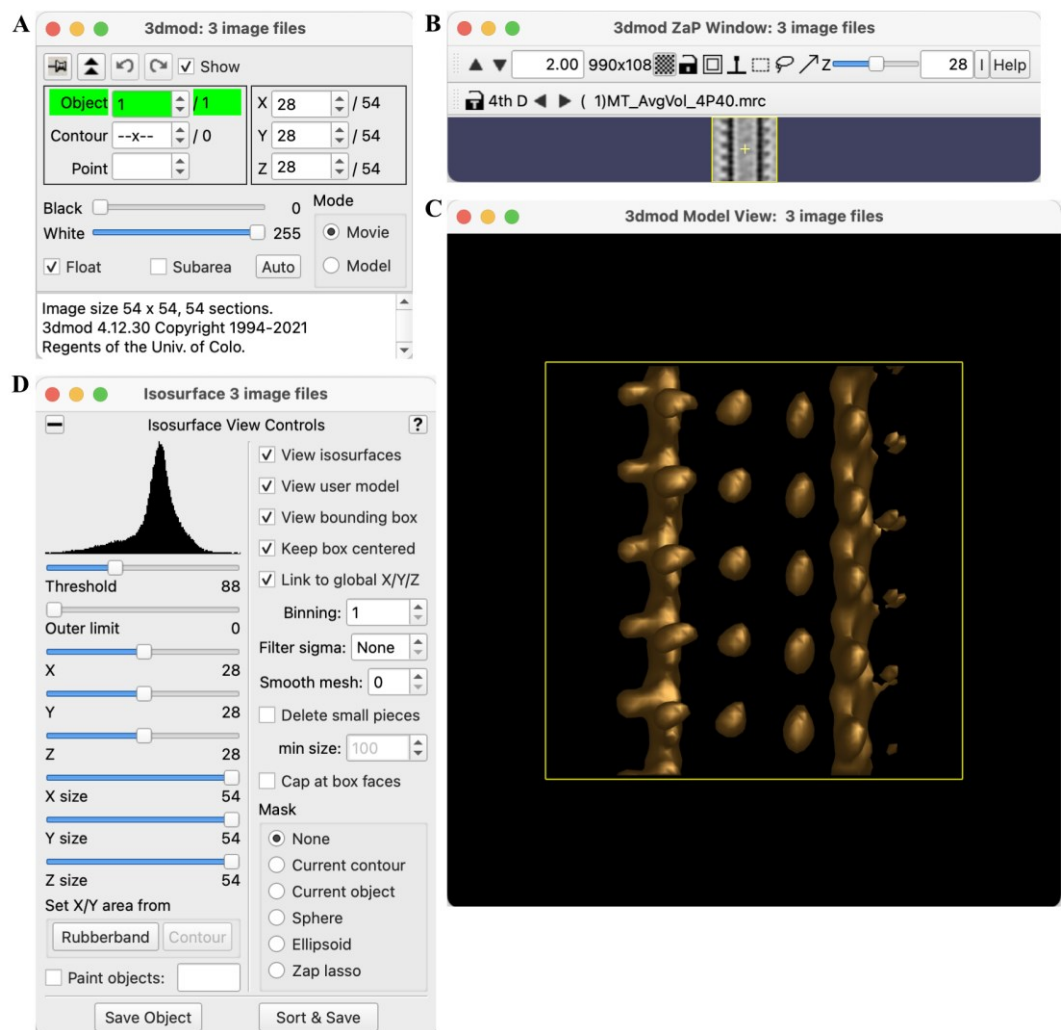


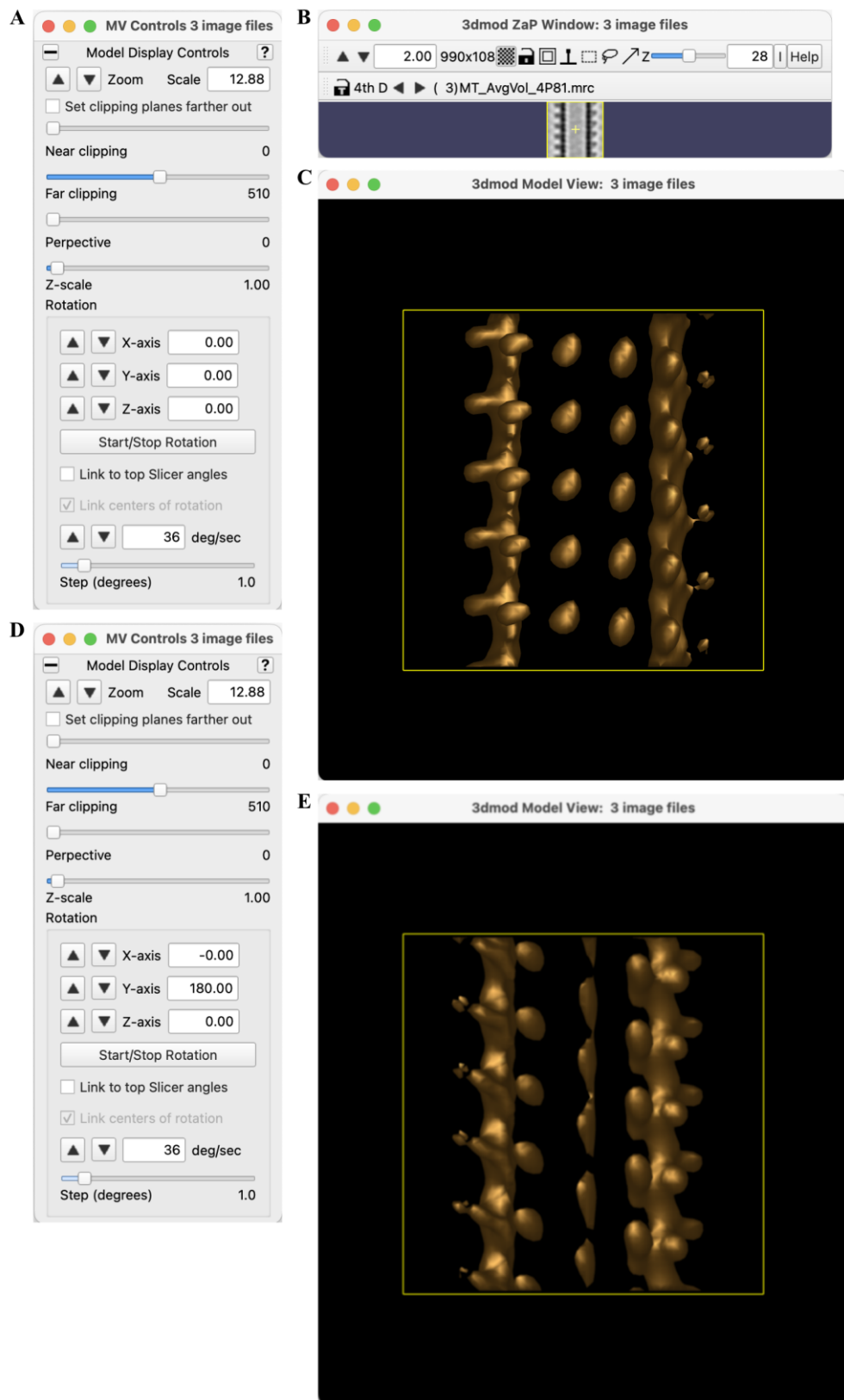
Figure 10. Configuration of the More Options tab of Etomo

- a. Alignment: Select the *Fast rotational matching* and *Use absolute value of cross-correlation* checkboxes.
  - b. Processing: Select the *Align averages to have their Y axes vertical*.  
*Note: The Masking during c <N> averaging can be left selected but is not relevant to this procedure.*
6. Subtomogram averaging
- a. Select the *Run* tab and press Run.  
*Note: With the current configuration (see Equipment section), the process takes ~9 min to complete.*
  - b. At the end of the process, click on *Open averages in 3dmod*. The *3dmod Information Window* opens (Figure 11A), together with the *3dmod ZaP Window* displaying the middle Y section of the 40 particles subtomogram average (MT\_AvgVol\_40P40.mrc, Figure 11B), the *3dmod Model View* that displays the isosurface (Figure 11C), and the *Isosurface control panel* (Figure 11D).  
*Note: Click on Open References in 3dmod to check that the inner and outer masks were properly positioned and oriented.*



**Figure 11. Subtomogram average of the full-length microtubule.** (A) 3dmod Information Window. (B) 3dmod ZaP window displaying the intermediate 40 particles subtomogram average. (C) Isosurface of (B). (D) Isosurface control panel.

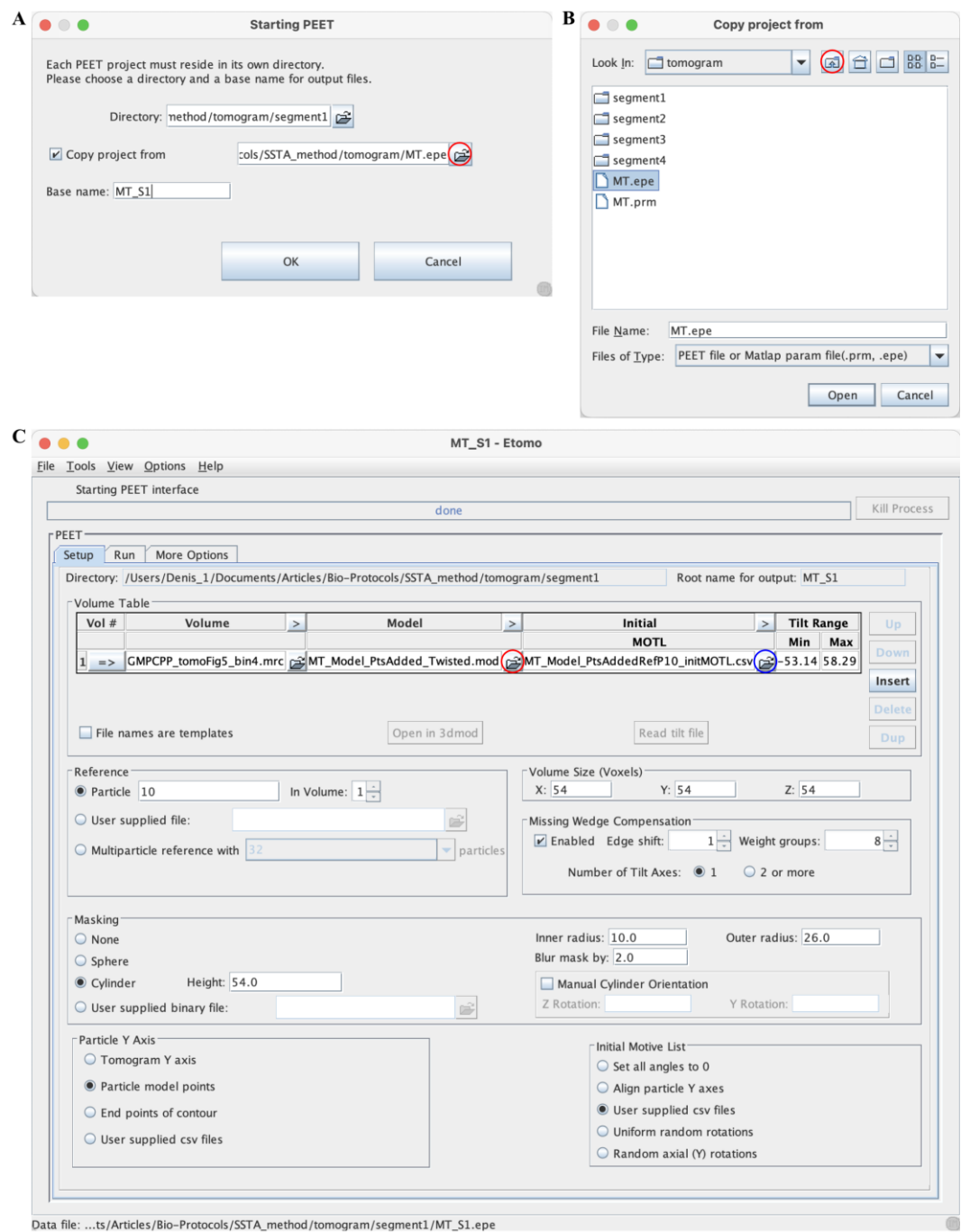
- c. Click on the *3d Model View* window and, in the main menu, select *Edit > Controls...* In the *MV Controls* panel that opens, move the *Near clipping* slider to 510 (Figure 12A).



**Figure 12. Inspection of the subtomogram average of the full-length microtubule.** (A) MV Controls menu. (B) Selection of the 81 particle subtomogram average (MT\_AvgVol\_81.mrc) in the ZaP window.

- (C) Visualization of the 81 particle subtomogram average showing a B-type lattice organization. (D) Rotation of the map by 180° around the Y-axis. (E) Visualization of the 81 particle subtomogram average showing two seams of the A-lattice type and the middle protofilament with thinner densities with respect to the adjacent protofilaments.
- d. Select the *3dmod ZaP* window and click twice on the right arrow to display the final map *MT\_AVgVol\_4P81.mrc* (Figure 12B). The isosurface view displays kinesin molecules that are slightly offset longitudinally from one protofilament to the next (Figure 12C), indicating that the underlying  $\alpha\beta$ -tubulin heterodimers share homotypic lateral interactions of the B-type.
  - e. Select the *MV controls* panel, enter 180 in the Y-axis textbox, and press Enter (Figure 12D). The kinesin molecules display large longitudinal offsets between the three front protofilaments (Figure 12E), indicating that the underlying  $\alpha\beta$ -tubulin heterodimers share heterotypic lateral interactions of the A-type. In addition, the kinesin densities of the central protofilament are less well defined than those of the two adjacent protofilaments, suggestive of a transition in lattice-type in this region.
  - f. Select the Etomo panel and click on File > Exit, then answer Yes to the question “There are still 3dmod programs running. Do you wish to end these programs?”
7. Segmented subtomogram averaging
- a. In the terminal, enter “`splitIntoNSegments 4 MT_Model_PtsAdded_Twisted.mod MT_model_PtsAddedRefP10_initMOTL.csv.`” This command creates five directories numbered *segment1* to *segment5*. As indicated in the terminal, *segment1* to *segment4* contain 20 particles each, and *segment5* contains one particle.  
*Note: The directory segment5 can be deleted using the command “rm -r segment5.”*
  - b. Enter “`cd segment1.`”
  - c. Enter “`etomo`” and click on *Subvolume Averaging (PEET)* (see Figure 8A).
  - d. In the *Starting PEET* window, select the *Copy project from* and click on the folder icon on the right (Figure 13A, red circle).
  - e. In the *Copy project from* window, click on the folder icon with an arrow (Figure 13B, red circle) to move up one level, and double-click on the *MT.epe* file.
  - f. In the *Starting PEET* window (Figure 13A), rename the *Base name* *MT\_S1* and press OK. This opens the Etomo panel for *MT\_S1* (Figure 13C).
  - g. In the volume Table, click on the Model file chooser (Figure 13C, red circle), double-click on the folder *segment1*, then double-click on the file “*MT\_model\_PtsAdded\_Twisted.mod.*”
  - h. Click on the *Initial MOTL folder* icon (Figure 13C, blue circle), double-click on the folder *segment1*, then double-click on the file “*MT\_model\_PtsAddedRefP10\_initMOTL.csv.*”  
*Notes:*
    - i. If you choose a reference point other than 10 for the full-length microtubule, adjust the Reference: Particle number to 10, which is half the number of particles in the segments.
    - ii. See General note 2.
  - i. Select the *Run* tab (Figure 14) and change the number of *Particles per CPU* to 2.  
*Note: Adjust the value with respect to the total number of CPU on your computer.*
  - j. In the *Iteration Table*, change the *Ref Threshold* to 18 in each row.  
*Note: If only one row is present, add the three other rows as in Figure 9B.*
  - k. In the *Number of Particles to Average*, change the *Start*, *Incr.*, and *End* values to 20, erase the value present in the *Additional numbers* textbox and press *Run*.  
*Note: With these settings, only one map will be calculated.*
  - l. In the terminal, enter “`cd ../segment2.`”
  - m. Repeat steps c-k used for *segment1* using its *MT\_S1.epe* file as a template. Modify the *Base name* accordingly (*MT\_S2* to *MT\_S4*); in the *Setup* tab, select the corresponding model and initial motive list files, and press *Run*.





**Figure 13. Preparation of the first segment.** (A) Starting PEET menu. (B) Selection of the MT.epe file of the full-length microtubule. (C) PEET interface of segment 1.

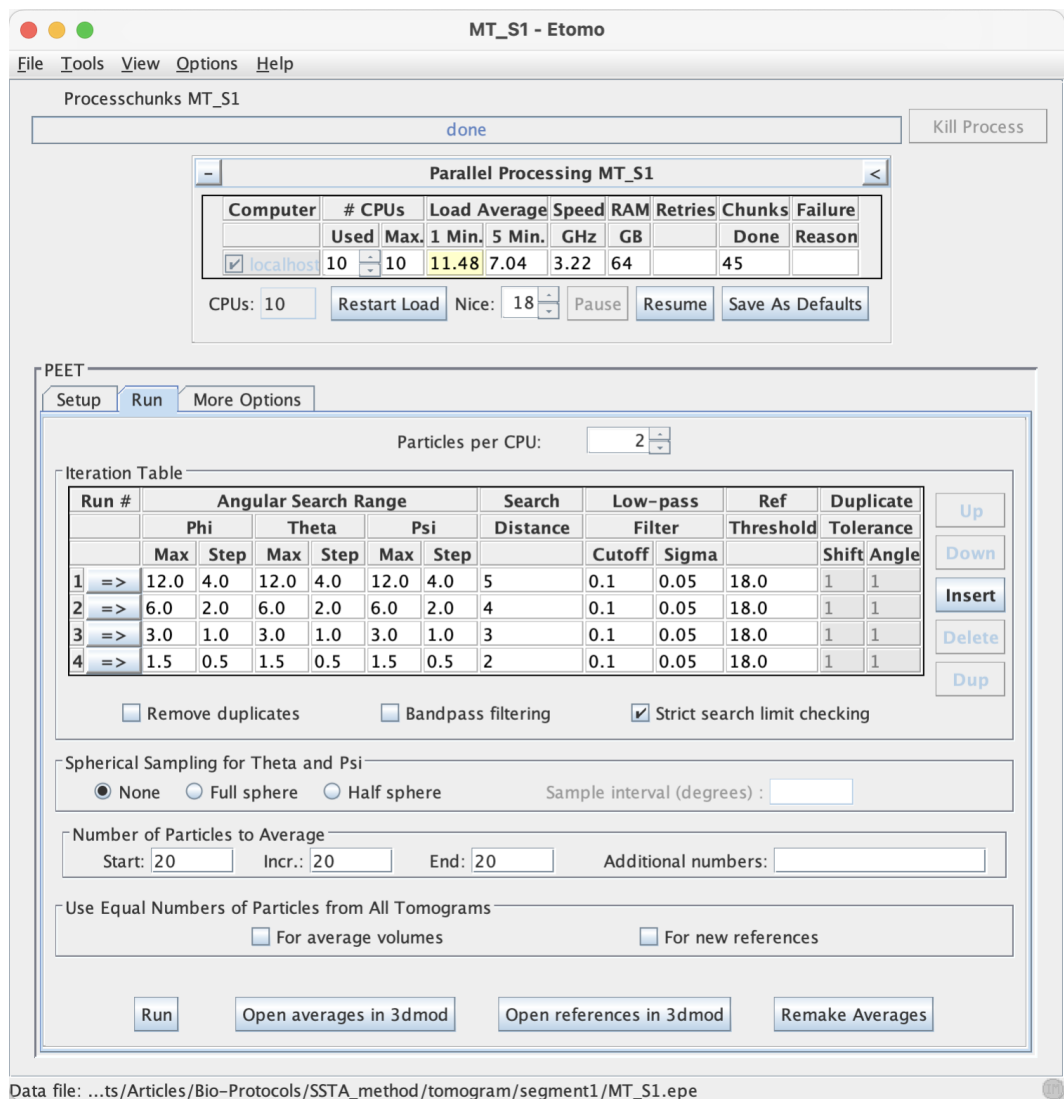
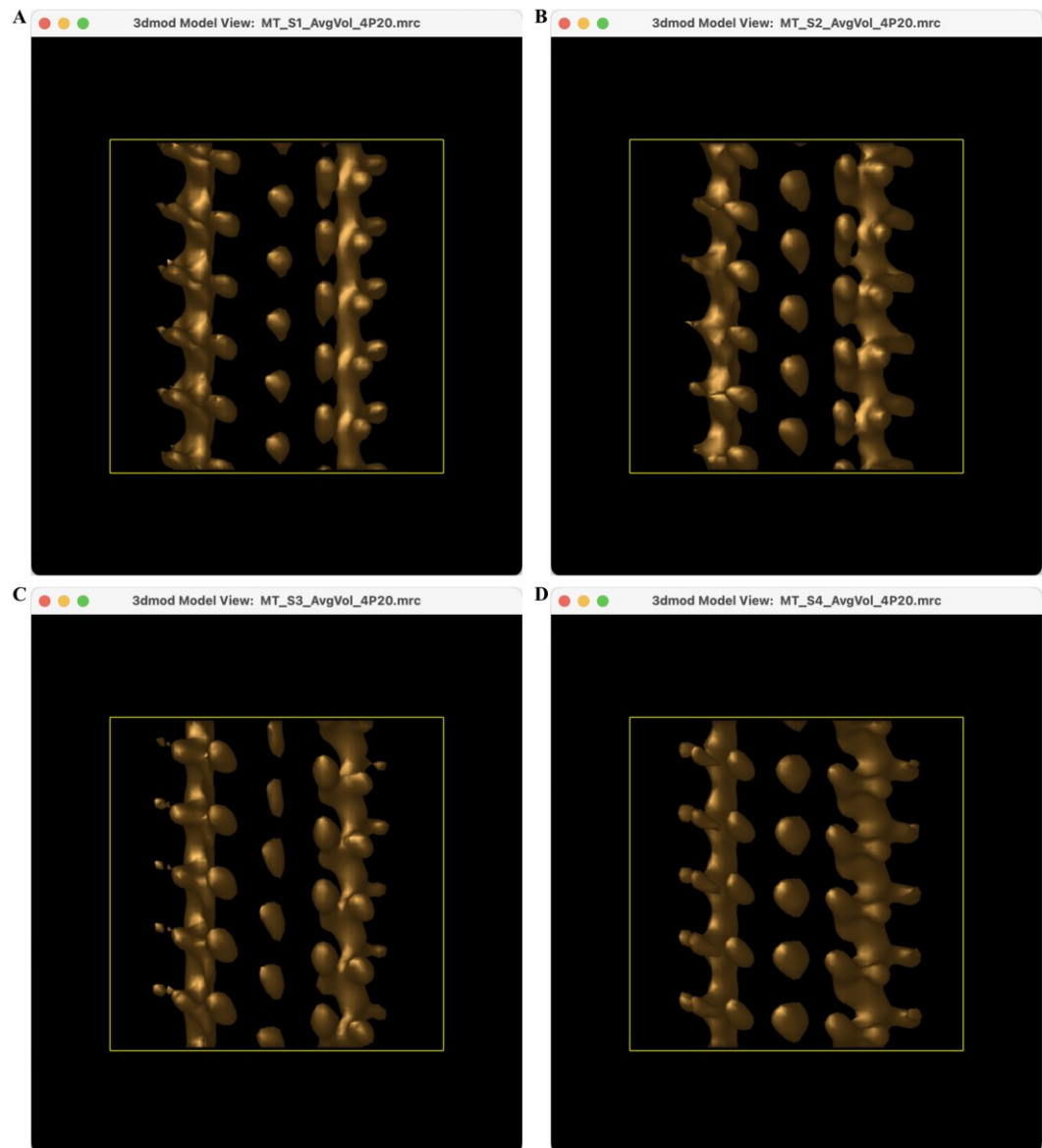


Figure 14. Configuration of the 'Run' tab of segment1

- n. Inspect the subtomogram averages of segment1–4, as done for the full-length microtubule (see §6, Figure 12). The three first segments display a A-lattice type organization in the three front protofilaments observed in the  $Y = 180^\circ$  view (Figure 15A–15C), while the fourth segment displays a B-type lattice organization in the same region (Figure 15D), implicating that a hole of at least one monomer (or a larger odd number) exists at the transition region between segments 3 and 4 (visualized in the raw data, see Figure 5 of Guyomar et al., 2022).

*Note: An additional seam is visible on the right in all subvolumes and can be visualized more clearly by turning the maps around Y by  $90^\circ$ .*



**Figure 15. Segmented subtomogram averaging.** (A) Segment 1. (B) Segment 2. (C) Segment 3. (D) Segment 4. Views turned by 180° around the Y-axis are displayed in (A–D). The kinesin motor domain densities in the three front protofilaments of segments (1–3) are shifted longitudinally by  $\sim 49.2$  Å indicating that the underlying  $\alpha\beta$ -tubulin molecules share heterotypic interactions of the A-type. Conversely, they are shifted longitudinally by  $\sim 9.2$  Å in segment 4 indicating that the underlying  $\alpha\beta$ -tubulin molecules share homotypic interactions of the B-type.

## Validation of protocol

This protocol allowed us to analyze 134 microtubules that were divided into 938 segments (see Table 1 in Guyomar et al. 2022). A total of 172 lattice-type transitions were observed within individual microtubules assembled from purified tubulin in the presence of GTP (24 microtubules, 195 segments, 119 transitions), GMPCPP (31 microtubules, 238 segments, 37 transitions), and *Xenopus* egg cytoplasmic extracts in the presence of 5% DMSO (64 microtubules, 419 segments, 6 transitions) and RanQ69L (15 microtubules, 86 segments, 2 transitions).

## General notes and troubleshooting

### General notes

1. A detailed tutorial on subtomogram averaging of full-length microtubules decorated with kinesin motor domains can be found at the following URL (session *Aligning and Averaging Filaments: Microtubules*): [https://bio3d.colorado.edu/RML\\_2017/2017\\_IMOD\\_PEET\\_Workshop](https://bio3d.colorado.edu/RML_2017/2017_IMOD_PEET_Workshop). A tutorial video is also available at the following URL: <https://www.youtube.com/watch?v=aC8gEurMhO8>.
2. When performing subtomogram averaging on dual-axis cryo-electron tomograms, a missing prism mask must be created. A suitable mask can be generated using program `dualAxisMask` if the two tilt files, `tomogram_a.tlt` and `tomogram_b.tlt`, are present in the working directory. The general format of the command to enter in the terminal is “`dualAxisMask szMask dirname basename edgeShift`.” In the example of the tutorial, this could have been “`dualAxisMask 54. tomogram 2.`” This command creates a file named “`tomogram_DualAxisMask.mrc`.” Alternatively, this mask file can be generated using the command “`multiTiltMask`.” After creating the mask, on the *Setup* tab of Etomo’s PEET interface, select *Number of Tilt Axis: 2 or more*. A new column named *Missing Wedge Mask* appears in the *Volume Table*. Click on the folder icon and select the `tomogram_DualAxisMask.mrc` file.
3. After copying the project from `../MT`, the Volume, Model, and Initial MOTL will default to those of the project you copied from. Additionally, the *browsing directory* will typically also default to the source directory, so when you open up a file chooser, you will see files in the parent directory. Therefore, make sure you are choosing the newly generated model and motive list in the appropriate segment <N> directory and not the parent.

## Acknowledgments

This work was financially supported by the French National Research Agency (ANR-16-CE11-0017 and ANR-18-CE13-0001) to D.C. Cryo-electron microscopy data were acquired on the Microscopy Rennes imaging center platform (Biosit, Rennes, France), member of the national infrastructure France-BioImaging (FBI) supported by the French National Research Agency (ANR-10-INBS-04). This protocol was adapted from Guyomar et al. (2022). We thank Céline Callens (team MiToS, IGDR) and Sophie Chat (team QCPS, IGDR) for testing the protocol and for their useful feedback.

## Competing interests

The authors declare no conflicts of interests.

## References

- Debs, G. E., Cha, M., Liu, X., Huehn, A. R. and Sindelar, C. V. (2020). [Dynamic and asymmetric fluctuations in the microtubule wall captured by high-resolution cryoelectron microscopy](#). *Proc Natl Acad Sci U S A* 117(29): 16976-16984.
- des Georges, A., Katsuki, M., Drummond, D. R., Osei, M., Cross, R. A. and Amos, L. A. (2008). [Mal3, the Schizosaccharomyces pombe homolog of EB1, changes the microtubule lattice](#). *Nat Struct Mol Biol* 15(10): 1102-1108.
- Dias, D. P. and Milligan, R. A. (1999). [Motor protein decoration of microtubules grown in high salt conditions reveals the presence of mixed lattices](#). *J Mol Biol* 287(2): 287-292.
- Guyomar, C., Bousquet, C., Ku, S., Heumann, J. M., Guilloux, G., Gaillard, N., Heichette, C., Duchesne, L.,



- Steinmetz, M. O., Gibeaux, R., et al. (2022). [Changes in seam number and location induce holes within microtubules assembled from porcine brain tubulin and in \*Xenopus\* egg cytoplasmic extracts](#). *Elife* 11: e83021.
- Heumann, J. M., Hoenger, A. and Mastronarde, D. N. (2011). [Clustering and variance maps for cryo-electron tomography using wedge-masked differences](#). *J Struct Biol* 175(3): 288-299.
- Kikkawa, M., Ishikawa, T., Nakata, T., Wakabayashi, T. and Hirokawa, N. (1994). [Direct visualization of the microtubule lattice seam both in vitro and in vivo](#). *J Cell Biol* 127(6 Pt 2): 1965-1971.
- Kremer, J. R., Mastronarde, D. N. and McIntosh, J. R. (1996). [Computer visualization of three-dimensional image data using IMOD](#). *J Struct Biol* 116(1): 71-76.
- Mastronarde, D. N. (1997). [Dual-Axis Tomography: An Approach with Alignment Methods That Preserve Resolution](#). *J Struct Biol* 120(3): 343-352.
- McIntosh, J. R., Morphew, M. K., Grissom, P. M., Gilbert, S. P. and Hoenger, A. (2009). [Lattice structure of cytoplasmic microtubules in a cultured Mammalian cell](#). *J Mol Biol* 394(2): 177-182.
- Nicastro, D., Schwartz, C., Pierson, J., Gaudette, R., Porter, M. E. and McIntosh, J. R. (2006). [The molecular architecture of axonemes revealed by cryoelectron tomography](#). *Science* 313(5789): 944-948.
- Sosa, H., Hoenger, A. and Milligan, R. A. (1997). [Three different approaches for calculating the three-dimensional structure of microtubules decorated with kinesin motor domains](#). *J Struct Biol* 118(2): 149-158
- Sosa, H. and Milligan, R. A. (1996). [Three-dimensional structure of ncd-decorated microtubules obtained by a back-projection method](#). *J Mol Biol* 260(5): 743-755.
- Théry, M. and Blanchoin, L. (2021). [Microtubule self-repair](#). *Curr Opin Cell Biol* 68: 144-154.

## Supplementary information

The sessions to reconstruct the full-length microtubule and the 4 segments are provided as a zipped supplementary file. Download and decompress this file, then place the “GMPCPP\_tomoFig5\_bin4.mrc” file downloaded onto the EMPIAR database into the tomogram folder. ETomo sessions can be launched using “etomo \*.epe”, where \* replaces the file name.

The original tilt series and the reconstructed cryo-electron tomograms used in Guyomar et al. (2022) have been deposited onto the EMPIAR database (access codes 11253, 11263, 11264), see Supplementary Table 2 in Guyomar et al. (2022). This includes all the models used to segment the 134 microtubules analyzed in this study. Subtomogram averages of the microtubules presented in the Figures in Guyomar et al. (2022) have been deposited on the EMDB database, see Supplementary Table 1 in Guyomar et al. (2022).