



HAL
open science

Assessment of Thoracic Endovascular Aortic Repair Using Relay Proximal Scallop: Results of a French Prospective Multicentre Study

Lucie Derycke, Jacques Tomasi, Pascal Desgranges, Francis Pesteil, Didier Plissonier, Mathieu Pernot, Antoine Millon, Robert Martinez, Nabil Chakfé,
Jean Marc Alsac

► To cite this version:

Lucie Derycke, Jacques Tomasi, Pascal Desgranges, Francis Pesteil, Didier Plissonier, et al.. Assessment of Thoracic Endovascular Aortic Repair Using Relay Proximal Scallop: Results of a French Prospective Multicentre Study. *European Journal of Vascular and Endovascular Surgery*, 2023, 10.1016/j.ejvs.2023.08.002 . hal-04196144

HAL Id: hal-04196144

<https://hal.science/hal-04196144>

Submitted on 14 Sep 2023

HAL is a multi-disciplinary open access archive for the deposit and dissemination of scientific research documents, whether they are published or not. The documents may come from teaching and research institutions in France or abroad, or from public or private research centers.

L'archive ouverte pluridisciplinaire **HAL**, est destinée au dépôt et à la diffusion de documents scientifiques de niveau recherche, publiés ou non, émanant des établissements d'enseignement et de recherche français ou étrangers, des laboratoires publics ou privés.



Distributed under a Creative Commons Attribution - NonCommercial 4.0 International License

1 **Assessment of Thoracic Endovascular Aortic Repair Using Relay Proximal Scallop: Results of a**
2 **French Prospective Multicentre Study**

3 **Short title:** Proximal Scallop for Simpler Endovascular Treatment in the Aortic Arch

4 **Lucie Derycke ^{a,*}, Jacques Tomasi ^b, Pascal Desgranges ^c, Francis Pesteil ^d, Didier Plissonier ^e,**
5 **Mathieu Pernot^f, Antoine Millon ^g, Robert Martinez ^h, Nabil Chakfe ⁱ, and Jean-Marc Alsac ^a**

6 ^a Department of Cardio-Vascular and Vascular Surgery, Hôpital Européen Georges Pompidou, Paris,
7 France

8 ^b Department of Thoracic and Cardiovascular Surgery, University Hospital Centre-INSERM LTSI 1099,
9 Rennes, France

10 ^c Department of Vascular Surgery, Centre Hospitalier Universitaire Henri Mondor, Créteil, France

11 ^d Department of Vascular Medicine and Surgery, Dupuytren University Hospital, Limoges, France

12 ^e Department of Vascular Surgery, Rouen University Hospital, Rouen, France

13 ^f Department of Cardiology and Cardio-Vascular Surgery, Hopital Cardiologique de Haut-Leveque,
14 Bordeaux University Hospital, Pessac, France

15 ^g Department of Vascular and Endovascular Surgery, Hospices Civils de Lyon, Louis Pradel University
16 Hospital, Bron, France

17 ^h Department of Cardio-Vascular Surgery, University Hospital of Tours, Tours, France

18 ⁱ Department of Vascular Surgery and Kidney Transplantation, University Hospital of Strasbourg,
19 Strasbourg, France

20 ^j Department of Cardio-Vascular Surgery, University Hospital of St Etienne, St Etienne, France

21 * Corresponding author. Department of Cardio-Vascular and Vascular Surgery, Hôpital Européen
22 Georges Pompidou, Paris, France.

23 lucie.derycke@aphp.fr (Lucie Derycke).

24 **WHAT THIS PAPER ADDS**

25 Proximal scalloped endograft may allow endovascular repair in the aortic arch in a select patient
26 population with minimal supra-aortic vessel and wire manipulation without compromising longer term
27 durability. This multicentre prospective study evaluates the safety and efficacy at one year of the Relay
28 proximal scallop stent graft. Treatment in 40 patients from 10 centres with a patients per centre median
29 of 2, of whom 50% targeted aortic arch zone 0 and 35% had associated supra-aortic revascularisation,
30 resulted in 95% primary technical success, 10% 30 day mortality, 5% stroke, and 2.5% type Ia endoleak
31 at one year. Overall mortality at one year was 17.5%.

32 **Objective:** A proximal scallop design allows aortic arch repair without complex endovascular
33 manipulation in the aortic arch. The aim was to assess the safety and efficacy at one year of the Relay
34 proximal scallop stent graft.

35 **Methods:** A prospective multicentre study evaluated consecutive patients treated with the Relay
36 proximal scallop stent graft in 10 French aortic centres. All consecutive patients eligible for elective
37 thoracic endovascular repair with proximal scallop in the 10 participating centres between January 2015
38 and July 2018 were included. Primary endpoints were 30 day mortality, stroke, and spinal cord
39 ischaemia (SCI) rates. Outcomes including safety and efficacy, technical and clinical success, all cause
40 mortality, neurological events, vessel patency, and device specific complications were analysed.
41 Survival and survival without severe complications were estimated using Kaplan–Meier estimates.

42 **Results:** Ten aortic centres treated 40 patients for thoracic aortic aneurysm (45%), penetrating
43 atherosclerotic aneurysm (30%), and dissection (25%). Half of the procedures (50%) targeted zone 0 of
44 the aortic arch (zone 0 in 17.5% and zones 0/1 in 32.5%), 37.5% targeted zone 2 (35% zone 2 alone;
45 2.5% zones 1/2), and 15% targeted zone 1 (12.5% zone 1 alone). Median follow up was one year. Thirty
46 day mortality, stroke, and SCI rates were 10%, 5%, and 0% respectively. Primary technical success was
47 95%. Type Ia, Ib, and III endoleaks rates were 5.4%, 0%, and 0% respectively at one month. Overall
48 mortality rate at one year was 17.5%. Aneurysm expansion was > 5 mm in one case at one year

49 associated with type Ia endoleak (3%). There was no supra-aortic trunk thrombosis, one (2%) graft kink,
50 and no migration.

51 **Conclusion:** One year outcomes showed that the Relay proximal scallop stent graft is an acceptable
52 answer to aortic thoracic disease to deal with short proximal landing zones.

53 <H1>INTRODUCTION

54 Thoracic endovascular aortic repair (TEVAR) has become the first line treatment of thoracic aortic
55 aneurysm and type B aortic dissection, particularly in high risk patients.¹⁻³ This technique is associated
56 with drastic reduction of early morbidity and mortality compared with open surgical repair, particularly
57 if the proximal landing zone does not include the supra-aortic trunk (SAT).⁴ Nevertheless, up to 40% of
58 patients will have lesions extending to or involving the orifice of the left subclavian artery (LSA) and
59 may require coverage for adequate stent graft sealing.⁵ Open repair remains the reference standard in
60 medically fit patients, despite a peri-operative mortality rate of 7 – 12% reported for elective cases.^{3,6,7}
61 Aortic arch anatomy is subject to many variations and tortuosity as well as greater pulsatile forces,
62 making it a very challenging segment for endovascular repair. During the last decade, short neck issues
63 in TEVAR led surgeons to develop alternative techniques, such as hybrid arch repair with supra-aortic
64 debranching,^{8,9} chimneys,^{10,11} fenestrations,¹² and branches.¹³⁻¹⁷ However, complex endovascular
65 manipulations in the aortic arch increase the theoretical risk of embolisation and stroke and SAT
66 debranching may also have a risk of stroke and nerve palsy.^{8,9,18}

67 A simpler endovascular device design allowing proximal sealing in the aortic arch while
68 maintaining perfusion to one or more of the SAT vessels and limiting additional endovascular or open
69 revascularisation should therefore be considered. The custom made Relay proximal scallop device
70 (Terumo Aortic, Sunrise, FL, USA) (Fig. 1) has a bare stent and a graft cut away design to preserve
71 follow to one (or more) of the SAT vessels. This device is based on the standard Relay platform known
72 for its dual sheath delivery system that allows the descending thoracic aorta and aortic arch to be reached
73 using a soft, inner sheath.¹⁹ A pre-curved catheter goes along the length of the stent graft, providing
74 longitudinal support to accurately place the scallop systematically on the upper side of aortic arch.

75 Scallop length and width can be 10 – 30 mm and 13 – 22 mm, respectively, and depend on graft
76 diameter. Custom Relay diameters can be between 20 and 50 mm and allow tapering. Finally, distal
77 scallop designs are also possible.²⁰ Previous studies have reported its feasibility and showed satisfying
78 early and midterm results.²⁰⁻²³

79 The REP (*Relay Echancrée en Proximal*) study is the first prospective, multicentre study to
80 assess the Relay proximal scallop configuration in terms of security and efficacy.

81 <H1>MATERIALS AND METHODS

82 <H2>Study design and population

83 The study was non-interventional, non-randomised, and single arm. Ethics approval for this study was
84 given by the CCTIRS (*Comité Consultatif sur le Traitement de l'Information en matière de Recherche*
85 *dans le domaine de la Santé*) and the Île-de-France CPP (*Comités de protection des personnes IDF2*).
86 Regulatory approval was from the ANSM (*Agence nationale de sécurité du médicament et des produits*
87 *de santé*, DR-2014-435).

88 In accordance with French guidelines for TEVAR, participating aortic centres were required
89 to have expertise in both open and endovascular aortic repairs. Choice of TEVAR with a proximal
90 scallop was determined by each centre after multidisciplinary team meetings of each case. All French
91 centres that used Relay proximal scallop devices during inclusion period were included in the study.
92 All consecutive patients in 10 participating French aortic centres with appropriate anatomy and who
93 were deemed eligible by the centre for TEVAR with a proximal scallop configuration were
94 prospectively included. Patients needed to have life expectancy greater than one year. Urgent
95 procedures that would not allow the procedure to be deferred for three weeks without increasing the
96 medical risk to the patient were excluded to allow at least three weeks for device manufacture.
97 Informed written consent for the study was obtained from all patients. Indications for TEVAR with a
98 proximal scallop were maximum aneurysm diameter > 6 cm or rapid aneurysm growth (>5 mm/6
99 months or 1 cm/year), symptomatic aneurysm <6 cm without rupture complication, type B aortic
100 dissection without malperfusion or rupture signs, grade I or II isthmic rupture, saccular aneurysm,

101 penetrating aortic ulcer (PAU), type Ia endoleak post-standard TEVAR; proximal TEVAR landing
102 zone in the aortic arch requiring at least LSA coverage and distal sealing in the descending thoracic
103 aorta without coverage of the coeliac trunk; and proximal sealing from the proximal end of the stent
104 graft ≥ 2 cm

105 Also excluded were infectious aneurysms and patients unexpected to be able to comply with
106 clinical or radiological follow up.

107 <H2>*Peri-operative and post-operative follow up*

108 All management options were discussed at multidisciplinary team meetings with vascular and cardiac
109 surgeons. All clinical preoperative and peri-operative data, as well as follow up data were prospectively
110 collected. All procedures were performed under general anaesthesia. Peri-operative management
111 followed the French Society of Anaesthesiology standards.²⁴ Patients underwent intravenous induction
112 and maintenance with either volatile agents or total intravenous anaesthesia with a target controlled
113 infusion of sufentanil and propofol and orotracheal intubation. The anaesthesiologist monitored the
114 patient during the entire procedure. In addition to fluid therapy, noradrenaline (norepinephrine) support
115 was added for a target mean arterial pressure of 65 mmHg. Heparin administration was not standardised
116 and dose administered at the beginning of the procedure could vary between centres (between 50 and
117 100 IU/kg). Devices were flushed with 60 cc of heparinised saline. The scalloped TEVAR procedure
118 followed recommendations that have been previously described.²⁵ Post-operative follow up included
119 clinical assessment and computed tomography (CT) or magnetic resonance imaging (MRI) imaging
120 evaluation at one month, six months, and one year (CT or MRI choice was left to the discretion of
121 centres).

122 <H2>*Endpoints*

123 The primary endpoints were 30 day mortality, stroke, and spinal cord ischaemia (SCI) rates. Secondary
124 endpoints were technical success, all cause mortality, symptomatic left arm ischaemia, phrenic paralysis,
125 SAT patency, per-operative conversion, early post-operative local surgical complications, TEVAR-
126 related complications, re-intervention, and associated complications. Severe complications were defined

127 as all cause mortality, ischaemic stroke/transient ischaemic attack (TIA), SCI, peripheral ischaemia,
128 nerve injury, SAT thrombosis, type I/III endoleak, any secondary intervention, and post-operative
129 dialysis.

130 <H2>*Statistical analysis*

131 All data were collected in a secured electronic data capture platform (S4 Research, OpenClinica
132 platform, version 3.4). A descriptive analysis was performed. Quantitative variables were expressed as
133 mean \pm standard deviation or median (interquartile range [IQR]), as appropriate, and qualitative
134 variables as number (percentage).

135 Survival curves were constructed using the Kaplan–Meier method. All statistical analyses were
136 performed with SAS, statistical and analytic software version 9.4 (SAS institute inc., SAS Campus
137 Drive, Cary, NC, USA) and R statistical software version 4.1.1 (R foundation for Statistical Computing,
138 Vienna, Austria).

139 <H1>RESULTS

140 <H2>*Baseline characteristics of the patients*

141 A total of 40 patients underwent scalloped TEVAR between January 2015 and July 2018 in 10 French
142 aortic centres (patients per centre was median of 2; IQR 1, 15). The majority were men (82.5%, 33/40);
143 mean age was 70.6 ± 14.1 years. Patient baseline characteristics and pre-operative conditions are
144 described in Table 1. Indications for treatment were $n = 18$ (45%) atherosclerotic thoracic aortic
145 aneurysms, three of which were symptomatic, one (2.5%) was a Kommerel diverticulum and $n = 8$
146 (20%) were saccular aortic aneurysms; $n = 12$ (30%) PAU; $n = 10$ (25%) aortic dissection. Four
147 procedures (10%) were secondary interventions for failure of prior standard TEVAR (proximal
148 endoleak): two in type B aortic dissection, one in PAU, and one in atherosclerotic aneurysm. Three
149 symptomatic cases involved dysphonia and dysphagia ($n = 1$), back pain ($n = 1$), and nerve compression
150 ($n = 1$). All procedures were elective or semi-elective.

151 Half of the interventions (50%, 20/40) targeted aortic arch zone 0, one-third (35%, 14/40) zone
152 2, and 15% zone 1 (6/40). For two patients, proximal landing zone presented concentric or
153 circumferential calcium plaque. One-third of patients ($n = 12$, 30%) had had prior standard TEVAR.

154 Device details along with anatomical and procedural characteristics are described in Tables 2
155 and 3. With the exception of the eight cases treated after previous ascending aortic surgery with neo-
156 brachiocephalic trunk (BCT), one-third of patients ($n = 14$, 35%) had planned concomitant SAT
157 revascularisation. Scallop characteristics are presented in Figure 2.

158 <H2>*Peri-operative results*

159 Mean procedural and fluoroscopy times were 188.7 ± 107.8 minutes (112.5 – 228.5) and 12.7 ± 8.9
160 minutes (7.0 – 17.0) respectively. Mean procedural time was 267.7 ± 127.6 minutes in the subgroup
161 with concomitant SAT revascularisation and 142.3 ± 59.6 minutes in the subgroup without additional
162 procedures. Rapid pacing was used for one patient. Overall technical success was obtained in 97.5% of
163 cases (39/40). For one patient, stent graft maldeployment was followed by antegrade dissection and
164 aortic rupture that was treated by adding proximal extension. No open conversion was needed. For one
165 patient, type Ib endoleak was noticed and treated by an additional stent graft distally.

166 Additional details on devices and concomitant revascularisations are provided in Table 3.

167 In hospital death was 5% (two patients). One patient died from respiratory complications, the
168 other from a gastric haemorrhage with pneumoperitoneum. Two patients presented with neurological
169 complication (5%): the first underwent TEVAR with proximal landing in zone 1 and concomitant
170 revascularisation by bilateral carotid–subclavian bypass for the artery of Lusoria. He presented an
171 occipital lobe stroke in the early post-operative period. The second was treated for PAU in arch zone 2.
172 At day 1 he presented with a stroke of the anterior cerebral territory with complete occlusion of the right
173 anterior cerebral artery. Lower limb weakness was the only symptom. A coagulation test revealed the
174 presence of lupus anticoagulant.

175 There was no SCI. One patient presented with dysphonia and swallowing problems without
176 identified aetiology as no SAT bypass was needed for this case. Three days after the procedure, one
177 patient presented an acute leg ischaemia treated by femoral–femoral bypass.

178 <H2>*Follow up results*

179 The median follow up period was 12.02 months (IQR 8.84, 15.39). Four patients (10%) died within
180 one month or before discharge and a further three died within 12 months. Of the five patients who died
181 after discharge, two died within one month, one within six months, and two within 12 months. For
182 these cases, no identified causes of death were reported (no autopsy) and clinical and imaging
183 evaluations during the last follow up before the event were normal. All cause mortality at one year was
184 17.5%. Kaplan–Meier estimate of freedom from all cause mortality at one year was 82.5% (95% CI
185 80.5 – 84.50 (Fig. 3).

186 One patient presented TIA. One patient presented extension of its dissection to the abdominal
187 aorta. One patient presented an iliac stenosis that was treated by stenting. One patient with severe chronic
188 respiratory failure was hospitalised for check up. One patient presented with severe renal insufficiency
189 with permanent dialysis, and one patient presented a problem of healing of the wound in the groin. There
190 were no local complications related to revascularisation. Freedom from severe complications at one year
191 was 65% (95% CI 62.1 – 67.9) (Fig. 3).

192 Aneurysm exclusion at one year was obtained in 86.2% of cases (26/30, three missing). There
193 were no scallop positioning changes, stent graft migration, or kink noticed during follow up. No SAT
194 thrombosis was reported at one year. One patient, who underwent subsequent elective TEVAR for
195 chronic aortic dissection and had post-operative renal artery malperfusion treated by stenting, presented
196 renal stent thrombosis. Endoleak complications details during follow up are presented in Table 4.

197 <H1>DISCUSSION

198 This study presents the prospective multicentre results of scalloped TEVAR for 40 patients in 10 French
199 aortic centres. Satisfactory results were observed with technical success of 97.5% (39/40) and rate of

200 type Ia endoleak of 3.0% at one year (1/33), suggesting that, despite a relatively large proximal scallop
201 (mean length and width 31.6 mm and 18.8 mm, respectively), there was sufficient stent radial force for
202 adequate sealing. The concept of large scallops in combination with or without debranching remains
203 controversial with concerns about proximal sealing and durability. Sealing requirements are determined
204 by the interaction of the aortic wall and the stent graft in the treated area. Shahcheraghi *et al.*
205 demonstrated that the higher haemodynamic pressure in the aortic arch is along the outer wall near the
206 SAT.²⁶ Unlike visceral abdominal aortic aneurysms, where stent graft is deployed in the middle of the
207 sac, leaving a large gap between stent graft and aortic wall, in the aortic arch, haemodynamic forces and
208 angulation align the deployed stent graft against the greater curvature. This could explain the relatively
209 low rate of type Ia endoleaks.

210 The results are consistent with the literature. Since the first case series of four patients
211 demonstrating the feasibility and safety of the technique in 2011,²⁵ several studies have reported early
212 and mid-term experience with technical success in 100% of cases, 30 day mortality rate of 3 – 10%,
213 post-operative stroke rate of 3 – 14.3%.^{20,21,27,28} One study reported long term durability in a
214 retrospective review of 38 patients operated on in a single centre with median follow up of 4.5 years.²³
215 Technical success was 98%, and freedom from thoracic reintervention was 92%. Thirty day mortality
216 was 5%, post-operative stroke 8%, and type Ia endoleak 5%. Further prospective data are needed to
217 establish long term sealing and durability.

218 Most TEVAR failures are caused by proximal endoleaks originating from the smaller curvature
219 of the aortic arch.²⁹ To obtain a sufficient sealing zone for apposition in the inner curvature, a longer
220 length needs to be covered in the outer curvature. Recently, numerical and clinical studies assessed the
221 Modified Arch Landing Areas Nomenclature (MALAN classification) to predict proximal endograft
222 failures and showed that classification as a valuable tool in the preoperative decision process.^{30,31} Aortic
223 arch types were not analysed in this study. The use of such classification could help to better understand
224 in which aortic anatomy scalloped TEVAR is safest.

225 Fifty per cent of cases had anatomy compatible with landing zone in Ishimaru zone 0. The
226 alternative to scalloped TEVAR would have been aortic arch replacement surgery on cardiopulmonary
227 bypass, with significant associated morbidity and mortality, particularly in high risk patients. In recent
228 years, high volume centres have adopted fenestrated and branched TEVAR (f/b-TEVAR) with
229 encouraging results, especially in aortic dissection pathologies.^{16,32} Recent studies have reported b-
230 TEVAR results with 30 day mortality between 0% and 16.6%, stroke 11 – 25%, endoleaks 6 – 18.5%,
231 and technical success 96 – 100%.^{13,33,34} A recent study on 108 consecutive patients treated with f-
232 TEVAR in six experienced European vascular centres was reported by Tsilimparis in 2021.¹² The cohort
233 was quite similar to ours with 15% previous ascending aortic repair, 16% PAU, 39% post-dissection,
234 and 36% degenerative aneurysms. Proximal landing zone was in zone 0, 1, or 2 in 19.4%, 42%, and
235 39% of cases, respectively. A proximal scallop was used in conjunction with fenestration in 59% of
236 cases. They reported similar results with 30 day mortality, stroke, and late type Ia endoleaks, and
237 technical success rates of 3.7%, 7.5%, 3.8%, and 99%. However, f/b-TEVAR is technically complex,
238 time and contrast consuming, and requires advanced skills and experience. In particular, a significant
239 learning curve associated with the procedure has been reported.¹³ Moreover, multiple endovascular
240 manoeuvres for catheterisation or snaring of wires to access the SAT ostia could be associated with a
241 higher risk of stroke. In pre-loaded f-TEVAR, a high rate of wire entanglement has been reported (near
242 30%) that have been successfully managed by experienced operators but can increase manipulation in
243 the arch.¹² When anatomy allows, scalloped TEVAR seems to be much simpler and therefore more
244 accessible to vascular surgeons. This study is the first to prospectively report the mid-term results of
245 scalloped TEVAR. All the aortic French centre that used the Relay proximal scallop device included
246 patients with a median of two patients per centre and the eligibility criteria were not limited in order to
247 best represent the population treated, with a heterogeneous group of patients in terms of aortic diseases
248 morphologies and aetiologies. Moreover, no medical proctoring was required. Systematic positioning
249 of the scallop in the outer curvature is obtained with its pre-curved nitinol catheter and the operator
250 should only focus on the distal marker of the scallop, which can be easily identified and positioned at
251 the distal level of the SAT. Only one case used rapid pacing in this cohort. All these elements underline

252 that scalloped TEVAR technique is less technically demanding than modular stent grafts, resulting in
253 potentially fewer complications.

254 Stroke remains a major concern of thoracic endovascular repair of the aortic arch, with rates up
255 to 14%, probably less risky in aortic dissection pathology because of less atheroma ratio.^{16,32,35-38}
256 TEVAR for descending aortic aneurysm is associated with stroke rate up to 5%.³⁹ These rates could be
257 underestimated, with a 50% incidence of silent brain infarction reported in endovascular arch procedures
258 in a recent study.⁴⁰ Guidewire manipulation should be reduced to the minimum to limit the risk.
259 Moreover, according to Rylski *et al.*, the dual sheath design seems to be effective in reducing the
260 clinically relevant volume of gas released that can trigger cerebral embolisation by compartmentalising
261 the total volume into two quantities, only one of which represents a relevant risk for cerebral embolic
262 events.¹⁹ The cohort was a high risk population for stroke complication. Indeed, the landing zone was
263 in Ishimaru zone 0 or 1 in 65% of cases (26/40) and 75% of cases (30/40) presented atheromatous aortic
264 arch disease. Finally, the rate of post-operative stroke was 5%, similar to stroke rate reported for
265 descending aorta TEVAR.

266 Another complication is the risk of stroke and ischaemia associated with LSA coverage and the
267 Society of Vascular Surgery and the European Society for Vascular Surgery guidelines recommend
268 revascularisation of the LSA for patients considered at risk.^{1,4} Long term permeability of LSA bypass
269 or transposition is up to 97%, but this surgery can be also responsible for early complications such as
270 haematoma, stroke, and phrenic nerve palsy.^{41,42} Moreover, complications are reported to be even more
271 relevant in left common carotid artery (LCCA) and BCT debranching. A stent graft design able to
272 provide comfortable proximal sealing at the level of the aortic arch and endovascular SAT perfusion
273 while limiting SAT debranching would reduce risk of complications. In the study, 35% of patients
274 (14/40) required SAT debranching, 25% concerning the LSA ($n = 10$), and 17.5% the LCCA ($n = 7$).
275 No nerve injury related to SAT debranching was noticed.

276 TEVAR carries lower in hospital morbi-mortality than open repair in emergency situations.⁴³
277 However, the time to manufacture a custom made device is not compatible with emergent aortic repair.

278 Alternatives to open surgery, such as parallel grafting and physician modified endografts (PMEGs),
279 were presented as the answer for that kind of situation. Chimneys carry a high risk of proximal endoleak
280 due to gutters between the main stent graft and the parallel graft(s). PMEGs involve deployment of a
281 conventional stent graft device *ex vivo*, creation of customised fenestrations and placing it back into the
282 delivery system. The main limits are the uncertainties about long term resistance of the home made
283 customised fenestrations.^{44,45} Consequently, an off the shelf device available in the operating area
284 inventory setting with the most frequent aortic arch anatomies could provide an appropriate response to
285 urgent situations. Although no real consensus on a standard method to analyse aortic arch anatomy
286 exists, evaluation of arch morphology and applicability of off the shelf devices has been previously
287 published.⁴⁶⁻⁴⁸ Similar results were found with previous study of the Relay proximal scallop with 70%
288 and 85.5% of cases compatible with a scallop of 22 mm in width and 30 – 40 mm in length, respectively
289 and 75% of TEVAR with proximal and distal diameters between 34 and 44 mm and 30 and 40 mm,
290 respectively. The device is not yet available in emergency situations but its production for limited range
291 of diameters seems to be feasible.

292 There limitations to this study, including the heterogeneity of patients in terms of aortic disease
293 morphologies and aetiologies. Despite being a prospective protocol, one patient was lost to follow up at
294 one year and five patients died during follow up with no identified causes. The specific reason why the
295 scalloped TEVAR was selected (as opposed to alternatives such as f/b-TEVAR or hybrid repair) was
296 left to the discretion of centres, potentially creating selection bias and potential confounding by
297 indication. Moreover, the prospective protocol may result in missing data that were not initially defined
298 as criteria of the study, such as the use of cerebrospinal fluid drainage or femoral access modalities.
299 Interpretation of outcomes of supra-aortic revascularisation is limited by the small number of cases.

300 This study showed that scalloped TEVAR is an acceptable answer to aortic thoracic disease to
301 deal with short proximal landing zones. An off the shelf device should be developed to enhance the
302 range of possibilities for endovascular specialists dealing with complex thoracic aortic pathology in
303 emergency situations. Long term data are required to confirm durability and safety. More detailed

304 anatomical analysis, such as the MALAN classification and possibly numerical simulation, could help
305 to establish in which type of arch anatomy scalloped TEVAR is safest.

306 CONFLICT OF INTEREST

307 All authors were investigators in the Relay proximal scallop study sponsored by the manufacturer.
308 J.M.A. is a consultant and proctor for Terumo Aortic.

309 FUNDING

310 None.

311 ACKNOWLEDGEMENTS

312 The authors would like to acknowledge that the REP study was sponsored by Terumo Aortic (formerly
313 Bolton Medical).

314 REFERENCES

- 315 1 Riambau V, Böckler D, Brunkwall J, Cao P, Chiesa R, Coppi G, et al. Editor's Choice – Management
316 of Descending Thoracic Aorta Diseases: Clinical Practice Guidelines of the European Society for
317 Vascular Surgery (ESVS). *Eur J Vasc Endovasc Surg* 2017;**53**:4–52.
- 318 2 MacGillivray TE, Gleason TG, Patel HJ, Aldea GS, Bavaria JE, Beaver TM, et al. The Society of
319 Thoracic Surgeons/American Association for Thoracic Surgery clinical practice guidelines on the
320 management of type B aortic dissection. *J Thorac Cardiovasc Surg* 2022;**163**:1231–49.
- 321 3 Czerny M, Schmidli J, Adler S, Berg JC van den, Bertoglio L, Carrel T, et al. Editor's Choice –
322 Current options and recommendations for the treatment of thoracic aortic pathologies involving the
323 aortic arch: an expert consensus document of the European Association for Cardio-Thoracic Surgery
324 (EACTS) & the European Society for Vascular Surgery (ESVS). *Eur J Vasc Endovasc Surg*
325 2019;**57**:165–98.
- 326 4 Matsumura JS, Lee WA, Mitchell RS, Farber MA, Murad MH, Lumsden AB, et al. The Society for
327 Vascular Surgery Practice Guidelines: management of the left subclavian artery with thoracic
328 endovascular aortic repair. *J Vasc Surg* 2009;**50**:1155–8.
- 329 5 Karaolani GI, Antonopoulos CN, Charbonneau P, Georgakarakos E, Moris D, Scali S, et al. A
330 systematic review and meta-analysis of stroke rates in patients undergoing thoracic endovascular
331 aortic repair for descending thoracic aortic aneurysm and type B dissection. *J Vasc Surg*
332 2022;**76**:292–301.
- 333 6 Maurel B, Sobocinski J, Spear R, Azzaoui R, Koussa M, Prat A, et al. Current and future perspectives
334 in the repair of aneurysms involving the aortic arch. *J Cardiovasc Surg (Torino)* 2015;**56**:197–215.
- 335 7 Tian DH, Wan B, Eusanio MD, Black D, Yan TD. A systematic review and meta-analysis on the
336 safety and efficacy of the frozen elephant trunk technique in aortic arch surgery. *Ann Cardiothorac*
337 *Surg* 2013;**2**:58191–591.
- 338 8 Wallen T, Carter T, Habertheuer A, Badhwar V, Jacobs JP, Yerokun B, et al. National outcomes of
339 elective hybrid arch debranching with endograft exclusion versus total arch replacement procedures:
340 analysis of the Society of Thoracic Surgeons Adult Cardiac Surgery Database. *Aorta (Stamford)*
341 2021;**9**:21–9.

- 342 9 Cao P, Rango PD, Czerny M, Evangelista A, Fattori R, Nienaber C, et al. Systematic review of
343 clinical outcomes in hybrid procedures for aortic arch dissections and other arch diseases. *J Thorac*
344 *Cardiovasc Surg* 2012;**144**:1286–1300.e2.
- 345 10 Moulakakis KG, Mylonas SN, Dalainas I, Sfyroeras GS, Markatis F, Kotsis T, et al. The chimney-
346 graft technique for preserving supra-aortic branches: a review. *Ann Cardiothorac Surg*
347 2013;**2**:33946–33346.
- 348 11 Atkins MD, Lumsden AB. Parallel grafts and physician modified endografts for endovascular repair
349 of the aortic arch. *Ann Cardiothorac Surg* 2022;**11**:16–25.
- 350 12 Tsilimparis N, Prendes CF, Rouhani G, Adam D, Dias N, Stana J, et al. Pre-loaded fenestrated
351 thoracic endografts for distal aortic arch pathologies: multicentre retrospective analysis of short and
352 mid term outcomes. *Eur J Vasc Endovasc Surg* 2021;**62**:887–95.
- 353 13 Spear R, Haulon S, Ohki T, Tsilimparis N, Kanaoka Y, Milne CPE, et al. Editor's Choice –
354 Subsequent results for arch aneurysm repair with inner branched endografts. *Eur J Vasc Endovasc*
355 *Surg* 2016;**51**:380–5.
- 356 14 Tsilimparis N, Debus ES, Kodolitsch Y von, Wipper S, Rohlfes F, Detter C, et al. Branched versus
357 fenestrated endografts for endovascular repair of aortic arch lesions. *J Vasc Surg* 2016;**64**:592–9.
- 358 15 Haulon S, Greenberg RK, Spear R, Eagleton M, Abraham C, Lioupis C, et al. Global experience with
359 an inner branched arch endograft. *J Thorac Cardiovasc Surg* 2014;**148**:1709–16.
- 360 16 Czerny M, Berger T, Kondov S, Siepe M, Saint Lebes B, Mokrane F, et al. Results of endovascular
361 aortic arch repair using the Relay Branch system. *Eur J Cardio-Thorac Surg* 2021;(ezab160).
- 362 17 Nana P, Tyrrell MR, Guihaire J, Le Houérou T, Gaudin A, Fabre D, et al. A review: Single and multi-
363 branch devices for the treatment of aortic arch pathologies with proximal sealing in Ishimaru zone 0.
364 *Ann Vasc Surg* 2022.
- 365 18 Varkevisser RRB, Swerdlow NJ, de Guerre LEVM, Dansey K, Li C, Liang P, et al. Thoracic
366 endovascular aortic repair with left subclavian artery coverage is associated with a high 30-day stroke
367 incidence with or without concomitant revascularization. *J Endovasc Ther* 2020;**27**:769–76.
- 368 19 Rylski B, Mayer F, Beyersdorf F, Kondov S, Kolowca M, Kreibich M, et al. How to minimize air
369 embolisms during thoracic endovascular aortic repair with Relay Pro? *Interact CardioVasc Thorac*
370 *Surg* 2019.
- 371 20 van der Weijde E, Bakker OJ, Tielliu IFJ, Zeebregts CJ, Heijmen RH. Results from a nationwide
372 registry on scalloped thoracic stent-grafts for short landing zones. *J Endovasc Ther* 2017;**24**:97–106.
- 373 21 Fernández-Alonso L, Fernández Alonso S, Martínez Aguilar E, Santamarta Fariña E, Alegret Solé J,
374 Atienza Pascual M, et al. Fenestrated and scalloped endovascular grafts in zone 0 and zone 1 for
375 aortic arch disease. *Ann Vasc Surg* 2020;**69**:360–5.
- 376 22 Ben Abdallah I, El Batti S, Julia P, Alsac J-M. Thoracic stent-grafts with proximal scallop in aortic
377 arch repair. *Eur J Vasc Endovasc Surg* 2019;**58**(Suppl. 1):e178–9.
- 378 23 Hanna L, Abdullah A, Kashef E, Riga C, Jenkins M, Bicknell C, et al. Four-year results of the Bolton
379 relay proximal scallop endograft in the management of thoracic and thoracoabdominal aortic
380 pathology with unfavorable proximal landing zone. *J Vasc Surg* 2021;**74**:1447–55.
- 381 24 Vallet B, Blanloeil Y, Cholley B, Orliaguet G, Pierre S, Tavernier B, et al. Guidelines for
382 perioperative haemodynamic optimization. *Ann Fr Anesth Reanim* 2013;**32**:e151–8.
- 383 25 Kashef E, Aldin Z, Jenkins MP, Gibbs R, Bicknell CD, Cheshire NJW, et al. Scalloped thoracic stent-
384 graft for treatment of aortic arch aneurysms with unfavourable landing zones. *Cardiovasc Intervent*
385 *Radiol* 2011;**34**:845–51.
- 386 26 Shahcheraghi N, Dwyer HA, Cheer AY, Barakat AI, Rutaganira T. Unsteady and three-dimensional
387 simulation of blood flow in the human aortic arch. *J Biomech Eng* 2002;**124**:378–87.
- 388 27 Ben Abdallah I, El Batti S, Sapoval M, Abou Rjeili M, Fabiani J-N, Julia P, et al. Proximal scallop
389 in thoracic endovascular aortic aneurysm repair to overcome neck issues in the arch. *Eur J Vasc*
390 *Endovasc Surg* 2016;**51**:343–9.
- 391 28 Alsafi A, Bicknell CD, Rudarakanchana N, Kashef E, Gibbs RG, Cheshire NJ, et al. Endovascular
392 treatment of thoracic aortic aneurysms with a short proximal landing zone using scalloped endografts.
393 *J Vasc Surg* 2014;**60**:1499–506.

- 394 29 Ueda T, Fleischmann D, Dake MD, Rubin GD, Sze DY. Incomplete endograft apposition to the aortic
395 arch: bird-beak configuration increases risk of endoleak formation after thoracic endovascular aortic
396 repair. *Radiology* 2010;**255**:645–52.
- 397 30 Marrocco-Trischitta MM, van Bakel TM, Romarowski RM, de Beaufort HW, Conti M, van
398 Herwaarden JA, et al. The Modified Arch Landing Areas Nomenclature (MALAN) improves
399 prediction of stent graft displacement forces: proof of concept by computational fluid dynamics
400 modelling. *Eur J Vasc Endovasc Surg* 2018;**55**:584–92.
- 401 31 Marrocco-Trischitta MM, de Beaufort HW, Piffaretti G, Bonardelli S, Gargiulo M, Antonello M, et
402 al. The Modified Arch Landing Areas Nomenclature predicts proximal endograft failure after
403 thoracic endovascular aortic repair. *Eur J Cardiothorac Surg* 2020;**58**:309–18.
- 404 32 Verscheure D, Haulon S, Tsilimparis N, Resch T, Wanhainen A, Mani K, et al. Endovascular
405 treatment of post type a chronic aortic arch dissection with a branched endograft: early results from
406 a retrospective international multicenter study. *Ann Surg* 2021;**273**:997–1003.
- 407 33 Tsilimparis N, Detter C, Law Y, Rohlfes F, Heidemann F, Brickwedel J, et al. Single-center
408 experience with an inner branched arch endograft. *J Vasc Surg* 2019;**69**:977–85.
- 409 34 Ferrer C, Cao P, Coscarella C, Ferri M, Lovato L, Camparini S, et al. Italian Registry of double
410 inner branch stent graft for arch pathology (the TRIUMPH Registry). *J Vasc Surg* 2019;**70**:672–82.
- 411 35 Masada K, Kuratani T, Shimamura K, Kin K, Shijo T, Goto T, et al. Silent cerebral infarction after
412 thoracic endovascular aortic repair: a magnetic resonance imaging study. *Eur J Cardiothorac Surg*
413 2019;**55**:1071–8.
- 414 36 Kahlert P, Eggebrecht H, Jánosi RA, Hildebrandt HA, Plicht B, Tsagakis K, et al. Silent cerebral
415 ischemia after thoracic endovascular aortic repair: a neuroimaging study. *Ann Thorac Surg*
416 2014;**98**:53–8.
- 417 37 Grover G, Perera AH, Hamady M, Rudarakanchana N, Barras CD, Singh A, et al. Cerebral embolic
418 protection in thoracic endovascular aortic repair. *J Vasc Surg* 2018;**68**:1656–66.
- 419 38 Perera AH, Rudarakanchana N, Monzon L, Bicknell CD, Modarai B, Kirimi O, et al. Cerebral
420 embolization, silent cerebral infarction and neurocognitive decline after thoracic endovascular aortic
421 repair. *Br J Surg* 2018;**105**:366–78.
- 422 39 von Allmen RS, Gahl B, Powell JT. Editor's Choice – Incidence of stroke following thoracic
423 endovascular aortic repair for descending aortic aneurysm: a systematic review of the literature with
424 meta-analysis. *Eur J Vasc Endovasc Surg* 2017;**53**:176–84.
- 425 40 Charbonneau P, Kölbel T, Rohlfes F, Eilenberg W, Planche O, Bechstein M, et al. Silent brain
426 infarction after endovascular arch procedures: preliminary results from the STEP registry. *Eur J Vasc*
427 *Endovasc Surg* 2021;**61**:239–45.
- 428 41 Protack CD, Smith A, Moennich LA, Hardy D, Lyden SP, Farivar BS. Midterm outcomes of
429 subclavian artery revascularization in the setting of thoracic endovascular aortic repair. *J Vasc Surg*
430 2020;**72**:1222–8.
- 431 42 Voigt SL, Bishawi M, Ranney D, Yerokun B, McCann RL, Hughes GC. Outcomes of carotid-
432 subclavian bypass performed in the setting of thoracic endovascular aortic repair. *J Vasc Surg*
433 2019;**69**:701–9.
- 434 43 Harky A, Bleetman D, Chan JSK, Eriksen P, Chaplin G, MacCarthy-Ofosu B, et al. A systematic
435 review and meta-analysis of endovascular versus open surgical repair for the traumatic ruptured
436 thoracic aorta. *J Vasc Surg* 2020;**71**:270–82.
- 437 44 Cao S-H, Canonge J, Gaudric J, Dion D, Kuntz S, Jayet J, et al. Degradation phenomena on
438 “homemade” explanted aortic textile endografts. *EJVES Vascular Forum* 2021.
- 439 45 Canonge J, Jayet J, Heim F, Chakfé N, Coggia M, Coscas R, et al. Comprehensive review of
440 physician modified aortic stent grafts: technical and clinical outcomes. *Eur J Vasc Endovasc Surg*
441 2021.
- 442 46 Mougin J, Sobocinski J, Kratzberg J, Fabre D, Haulon S. Applicability of a standardized thoracic
443 endograft with a single branch for the left subclavian artery to treat aortic disease involving the distal
444 arch. *J Vasc Surg* 2020;**72**:1516–23.
- 445 47 van der Weijde E, Bakker OJ, Kamman AV, van Herwaarden JA, Trimarchi S, Vos JA, et al. A
446 feasibility study of off-the-shelf scalloped stent-grafts in acute type b aortic dissection. *J Endovasc*
447 *Ther* 2017;**24**:819–24.

448 48 Bosse C, Kölbel T, Mougin J, Kratzberg J, Fabre D, Haulon S. Off-the-shelf multibranched endograft
 449 for total endovascular repair of the aortic arch. *J Vasc Surg* 2020;**72**:805–11.

450 **Figure 1.** (A) Image of the custom made Relay proximal scallop device (Terumo Aortic, Sunrise, FL,
 451 USA). (B) Supra-aortic trunk scallop target vessels according to Ishimaru arch zones.

452 **Figure 2.** Scallop characteristics and stent graft diameters distribution. (A, B) Length and width of the
 453 scallop. (C, D) Proximal and distal diameter of the proximal stent graft.

454 **Figure 3.** (A) Cumulative Kaplan–Meier (KM) estimate of freedom from all cause mortality after
 455 scalloped thoracic endovascular aortic repair (TEVAR). (B) Cumulative KM estimate of freedom from
 456 complication related to scalloped TEVAR.

Variable	Patients
Age – y	70.6 ± 14.1 (28–89)
Female	7 (17.5)
Hypertension	31 (77.5)
Smoker	22 (55.5)
Dyslipidaemia	16 (40.0)
Peripheral artery disease	12 (30.0)
Former TEVAR	12 (30.0)
Cardiopathy	11 (27.5)
Chronic obstructive pulmonary disease	7 (17.5)
Chronic renal failure	5 (12.5)
Diabetes mellitus	4 (10.0)
Stroke	2 (5.1)

Previous ascending aortic surgery with neo-BCT	8 (20)
<i>Atherosclerotic aortic aneurysm</i>	18 (45)
Including saccular aortic aneurysm	8 (20)
Penetrating aortic ulcer	12 (30)
Aortic dissection	10 (25)
Type Ia endoleak (post standard TEVAR)	4 (10.0)

457 Data are *n* (%) or mean \pm standard deviation (min–max). TEVAR = thoracic endovascular aortic repair;

458 BCT = brachiocephalic trunk.

Table 2. Anatomical characteristics of treated patients.	
Variable	Patients (<i>n</i> = 40)
Length from LSA to lesion – mm	3.0 \pm 6.6 (–10 – 24)
Length from LCCA to lesion – mm	15.1 \pm 9.4 (7–22)
Length from BCT to lesion – mm	28.7 \pm 14.7 (8–67)
Length from neo-BCT to lesion (<i>n</i> = 8) – mm	17.0 \pm 22.0 (0–62)
Diameter of proximal landing zone – mm	34.0 \pm 5.9 (25–48)
Length of proximal landing zone – mm	28.5 \pm 6.5 (11–41)
Diameter of distal landing zone – mm	31.4 \pm 6.1 (22–49)
Length of distal landing zone – mm	39.1 \pm 15.5 (15–72)
Maximal diameter of total aorta – mm	56.0 \pm 15.1 (25–99)
Lateral angle between branches and aortic arch – °	32.2 \pm 20.1 (0–74)
Posterior lateral angle	23 (57.5)

459 Data are mean (\pm standard deviation) (min–max) or n (%). BCT = brachiocephalic trunk; LCCA = left
 460 common carotid artery; LSA = left subclavian artery; RCCA = right common carotid artery; SD =
 461 standard deviation.

Table 3. Device/scallop characteristics.	
Variable	Patients ($n = 40$)
Stent graft proximal diameter – mm	39.0 \pm 5.6 (28–50)
Stent graft distal diameter – mm	35.2 \pm 6.4 (25–50)
Stent graft length – mm	161.5 \pm 34.6 (90–200)
Scallop length – mm	31.6 \pm 10.4 (10–55)
Scallop width – mm	18.8 \pm 2.2 (12–22)
<i>Additional stent graft(s)</i>	18 (45.0)
1	15 (37.5)
2	2 (5.0)
3	1 (2.5)
<i>Concomitant revascularisation</i>	14 (35.0)
LSA to LCCA transposition/bypass	10 (71.4)
LCCA to RCCA bypass	5 (35.7)
Other	4 (28.6)

462 Data are mean (\pm standard deviation) (min–max) or n (%). BCT = brachiocephalic trunk; LCCA = left
 463 common carotid artery; LSA = left subclavian artery; RCCA = right common carotid artery.

Table 4. Outcomes of patients undergoing scalloped thoracic endovascular aortic repair.
--

Variable	1 month (n = 37)	6 months (n = 35)	12 months (n = 33)
<i>Lesion exclusion</i>			
Yes	32 (86.5)	25 (83.3)	25 (86.2)
No	5	5 (16.7)	4 (13.8)
Missing	0	5	4
Maximum diameter of lesion – mm	51.3 ± 18.8	50.5 ± 17.9	49.7 ± 17.9
	53.0 (38.0–64.5)	50.0 (36.0–65.0)	50.0 (35.0–60.0)
Change from baseline – mm	–4.5 ± 9.7	–8.0 ± 10.8	–6.6 ± 10.3
	0.0 (–8.0, 0.0)	–5.0 (12.0, 0.0)	–5.0 (–11.0, 1.0)
<i>Total aortic diameter change</i>			
Increase ≤5 mm	11 (30.6)	13 (48.1)	12 (48.0)
Stable	24 (66.7)	13 (48.1)	12 (48.0)
Decrease >5 mm	1 (2.8)	1 (3.7)	1 (4.0)
Missing	1	8	8
<i>Endoleaks</i>			
Any	5 (13.5)	5 (14.3)	4 (12.1)
Type Ia	2 (5.4)	0 (0.0)	1 (3.0)
Type Ib	0 (0.0)	0 (0.0)	1 (3.0)
Type II	3 (8.1)	4 (11.4)	1 (3.0)
Type III	0 (0.0)	1 (2.9)	1 (3.0)

Scallop related endoleak	0 (0.0)	0 (0.0)	0 (0.0)
--------------------------	---------	---------	---------

464 Data are mean \pm standard deviation, median (interquartile range), or n (%).

465

466

Journal Pre-proof

Table 1. Patient demographics, characteristics and indication for treatment	
Variable	Patients (n=40)
Age - y	70.6 ± 14.1 [28-89]
Female	7 (17.5)
Hypertension	31 (77.5)
Smoker	22 (55.5)
Dyslipidemia	16 (40.0)
Peripheral artery disease	12 (30.0)
Former TEVAR	12 (30.0)
Cardiopathy	11 (27.5)
Chronic obstructive pulmonary disease	7 (17.5)
Chronic renal failure	5 (12.5)
Diabetes mellitus	4 (10.0)
Stroke	2 (5.1)
Previous ascending aortic surgery with neo-BCT	8 (20)
Atherosclerotic aortic aneurysm	18 (45)
Including saccular aortic aneurysm	8 (20)
Penetrating aortic ulcer	12 (30)
Aortic dissection	10 (25)
Type Ia endoleak (post standard TEVAR)	4 (10.0)
Data are n (%) or mean ± SD [min-max]; TEVAR: thoracic endovascular aortic repair; BCT: brachio-cephalic trunk	

1

Table 2. Anatomical characteristics	
Variable	Patients (n=40)
Length from LSA to lesion - mm	3.0 ± 6.6 [-10-24]
Length from LCCA to lesion - mm	15.1 ± 9.4 [7-22]
Length from BCT to lesion - mm	28.7 ± 14.7 [8-67]
Length from neo-BCT to lesion (n=8) - mm	17.0 ± 22.0 [0-62]
Diameter of proximal landing zone - mm	34.0 ± 5.9 [25-48]
Length of proximal landing zone - mm	28.5 ± 6.5 [11-41]
Diameter of distal landing zone - mm	31.4 ± 6.1 [22-49]
Length of distal landing zone - mm	39.1 ± 15.5 [15-72]
Maximal diameter of total aorta - mm	56.0 ± 15.1 [25-99]
Lateral angle between branches and aortic arch - °	32.2 ± 20.1 [0-74]
Posterior lateral angle	23 (57.5)
Data are mean (±SD) [min-max] or n (%).	
BCT, brachiocephalic trunk; LCCA, left common carotid artery; LSA, left subclavian artery; RCCA, right common carotid artery; SD, standard deviation.	

2

3

4

5

Table 3. Device/scallop characteristics	
Variable	Patients (n=40)
Stent-graft proximal diameter - mm	39.0 ± 5.6 [28-50]
Stent-graft distal diameter - mm	35.2 ± 6.4 [25-50]
Stent-graft length - mm	161.5 ± 34.6 [90-200]
Scallop length - mm	31.6 ± 10.4 [10-55]
Scallop width - mm	18.8 ± 2.2 [12-22]
Additional stent-graft(s)	18 (45.0)
1	15 (37.5)
2	2 (5.0)
3	1 (2.5)
Concomitant revascularization	14 (35.0)
LSA to LCCA transposition/bypass	10 (52.7)
LCCA to RCCA bypass	5 (26.3)
Other	4 (21.1)
Data are mean (±SD) [min-max] or n (%).	
BCT, brachiocephalic trunk; LCCA, left common carotid artery; LSA, left subclavian artery; RCCA, right common carotid artery; SD, standard deviation.	

Table 4. Outcomes			
Variable	1 month n=37	6 months n=35	12 months N=33
Lesion exclusion	32 (86.5)	25 (83.3)	25 (86.2)
Maximum diameter of lesion - mm	51.3 ± 18.8	50.5 ± 17.9	49.7 ± 17.9
	53.0 (38.0-64.5)	50.0 (36.0-65.0)	50.0 (35.0-60.0)
Change from baseline - mm	-4.5 ± 9.7	-8.0 ± 10.8	-6.6 ± 10.3
	0.0 (-8.0-0.0)	-5.0 (12.0-0.0)	-5.0 (-11.0-1.0)
Total aortic diameter change			
Increase ≤5 mm	11 (30.6)	13 (48.1)	12 (48.0)
Stable	24 (66.7)	13 (48.1)	12 (48.0)
Decrease >5 mm	1 (2.8)	1 (3.7)	1 (4.0)
Missing	1	8	8
Endoleaks			
Any	5 (13.5)	5 (14.3)	4 (12.1)
Type Ia	2 (5.4)	0 (0.0)	1 (3.0)
Type Ib	0 (0.0)	0 (0.0)	1 (3.0)
Type II	3 (8.1)	4 (11.4)	1 (3.0)
Type III	0 (0.0)	1 (2.9)	1 (3.0)
Scallop-related endoleak	0 (0.0)	0 (0.0)	0 (0.0)
Data are mean ±SD , median (IQR) or n (%).			
IQR, interquartile range; SD, standard deviation			

Journal Pre-proof

Figure 1

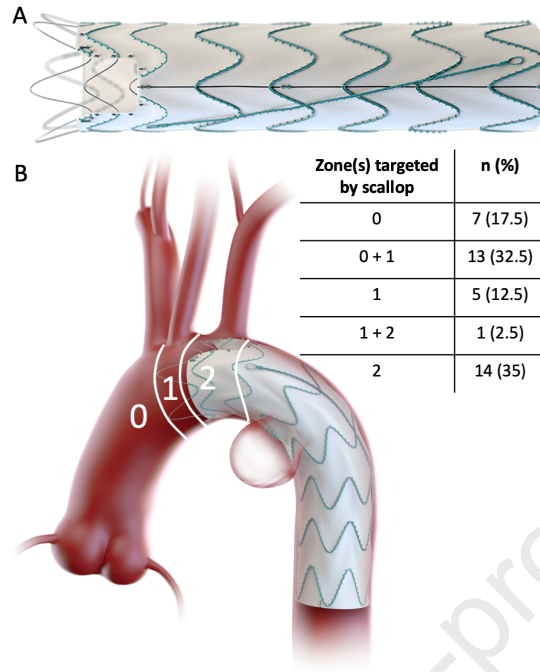


Figure 2

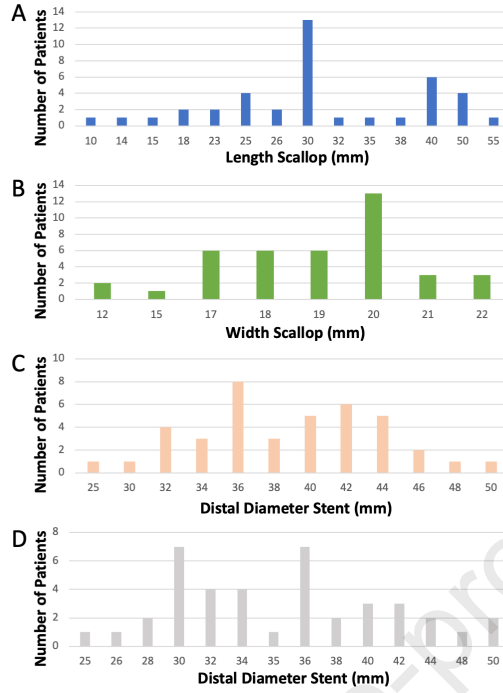
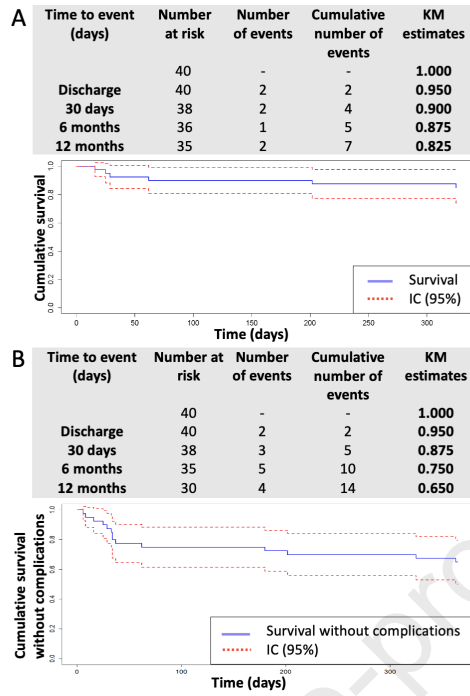


Figure 3



Short title: Proximal Scallop for Simpler Endovascular Treatment in The Aortic Arch

Figure 1: change n to n

Figure 2: follow E1 and E2

Figure 3: follow H1 and H2; change IC (95%) to 95% CI

An appendix file has been added

Journal Pre-proof