



HAL
open science

Perception of Extreme Climatic Events on Bananas around the Petit Balè Dam in the Boromo Commune (Burkina Faso)

Joseph Yaméogo, Songanaba Rouamba, Korotimi Sanou, Richard Zongo,
Pawendkissgou Isidore Yanogo

► **To cite this version:**

Joseph Yaméogo, Songanaba Rouamba, Korotimi Sanou, Richard Zongo, Pawendkissgou Isidore Yanogo. Perception of Extreme Climatic Events on Bananas around the Petit Balè Dam in the Boromo Commune (Burkina Faso). *European Journal of Science, Innovation and Technology*, In press, 3 (4), pp.209-223. hal-04194966

HAL Id: hal-04194966

<https://hal.science/hal-04194966v1>

Submitted on 4 Sep 2023

HAL is a multi-disciplinary open access archive for the deposit and dissemination of scientific research documents, whether they are published or not. The documents may come from teaching and research institutions in France or abroad, or from public or private research centers.

L'archive ouverte pluridisciplinaire **HAL**, est destinée au dépôt et à la diffusion de documents scientifiques de niveau recherche, publiés ou non, émanant des établissements d'enseignement et de recherche français ou étrangers, des laboratoires publics ou privés.



Distributed under a Creative Commons Attribution - NonCommercial 4.0 International License

Perception of Extreme Climatic Events on Bananas around the Petit Balè Dam in the Boromo Commune (Burkina Faso)

Joseph YAMÉOGO*, Songanaba ROUAMBA, Korotimi SANOU, Richard ZONGO,
Pawendkisgou Isidore YANOOGO

Norbert ZONGO University, Department of Geography, Koudougou, Burkina Faso

ABSTRACT

The aim of this study is to analyse local extreme weather events and their impact on the banana sector, as perceived by small-scale producers in the village of Lapara, in the municipality of Boromo. To do this, primary data was collected using a survey method. One hundred producers were interviewed in the field using questionnaires. The study showed that small banana growers have a wide range of socio-demographic and socio-economic characteristics. They perceive rainfall extremes (R95P, SDII, CWD, R10mm) and temperature extremes (TXx). The study also showed that climate extremes lead to problems such as reduced banana quality, lower producer incomes, loss of banana production and a reduction in the area planted along the main river bed. It is therefore important that local authorities adopt proactive strategies to help growers cope with climatic extremes.

Keywords: Burkina Faso, extreme climatic events, smallholder banana producers

INTRODUCTION

Studies on climate change and agricultural production are well established. The impact of climate change on agricultural production has been observed in Africa (Barrios et al., 2008; Blanc, 2012; Ochieng et al., 2016), Europe (Olesen et al., 2011; Alexandrov & Eitzinger, 2005), Asia (Aryal et al., 2020, Mendelsohn, 2014) and the Americas (Adams et al., 1998; Isik & Devadoss, 2006). The impact is felt on productivity (Ayinde et al., 2011; Lobell & Gourdji, 2012; Ozdemir, 2021) and soil fertility (Ramankutty et al., 2002; St. Clair & Lynch, 2010).

This situation has led many farmers around the world to turn to fruit production, such as bananas, as a coping strategy (Zhu et al., 2021). Several countries in sub-Saharan Africa, notably Burkina Faso, have also started to produce bananas near various dams. Today, bananas rank third in fruit production, after mangoes and citrus fruits in Burkina Faso (Ministry of Agriculture and Amenagements Hydraulics, 2016). Many regions, including the Boucle Mouhoun region, have invested in banana production. This has enabled producers in Boromo to generate financial resources ranging from 135,000 FCFA to 3,125,000 FCFA (Yaméogo et al., 2022). Burkina Faso is also subject to climatic variability, manifested by variations in climatic variables (rain, temperature, wind, evapotranspiration) (Lodoun et al., 2013; Ibrahim et al., 2014).

Moreover, recent rainfall patterns (1990-2020) are also characterized by the occurrence of extreme rainfall events (Yanogo & Yaméogo, 2023). In this context, the following research question can be justified: are small banana growers affected by extreme climatic events in Burkina Faso? The main objective of this study is to analyse local extreme climatic events and their impact on the banana sector, as perceived by small-scale producers in the village of Lapara, in the Boromo commune. The aim is to identify the socio-economic characteristics of small-scale producers, to analyse their perceptions of extreme climatic events and the problems they cause.

*Corresponding author, e-mail: josephyameogo10@gmail.com

REVIEW OF THE LITERATURE

There are numerous studies on climate extremes in world. They focus on trend analysis of climate extremes (Ajjur & Riffi, 2020; Abbasnia & Toros, 2020), on the impacts of climate extremes on ecosystems (Christensen et al., 2021; Sabater et al., 2023), food security (Gbegbelegbe et al., 2014; Lesk et al., 2016; Pagani et al., 2017; Hasegawa et al., 2021) and health (Mason et al., 2020; Ebi et al., 2021). Moreover, most studies on climate extremes (Costa et al., 2020; Dos Reis et al., 2020; Shawul & Chakma, 2020; Pervin & Khan, 2022; Ryan et al., 2022) use the indices defined by the World Meteorological Organisation (WMO) in the framework of the CC/CLIVAR Expert Team on Climate Change Detection, Monitoring and Indices (ETCCDMI) using the RclimDex software (Zhang & Yang, 2004). In Sub-Saharan Africa (SSA), the impacts of climate change and extreme weather events are becoming more intense and frequent (Ayanlade et al., 2022). Thus, most studies focus on characterising climatic extremes (Nangombe et al., 2018; Adeyeri et al., 2019), farmers' adaptation strategies to climatic extremes (Boansi et al., 2017; Owusu & Yiridomoh, 2021). However, very few studies (Yiridomoh et al., 2021) have focused on farmers' perceptions of extreme weather events and their impact on production activities. However, understanding local people's perceptions of extreme rainfall events and their variability is essential for reducing the natural risks associated with extreme events (Eini et al., 2022). It is therefore appropriate to address this issue in order to fill this gap in studies on climate extremes.

DATA AND METHODS

Presentation of the Study Area

The study site is located in the Boucle du Mouhoun region, in the Balè province (Figure 1).

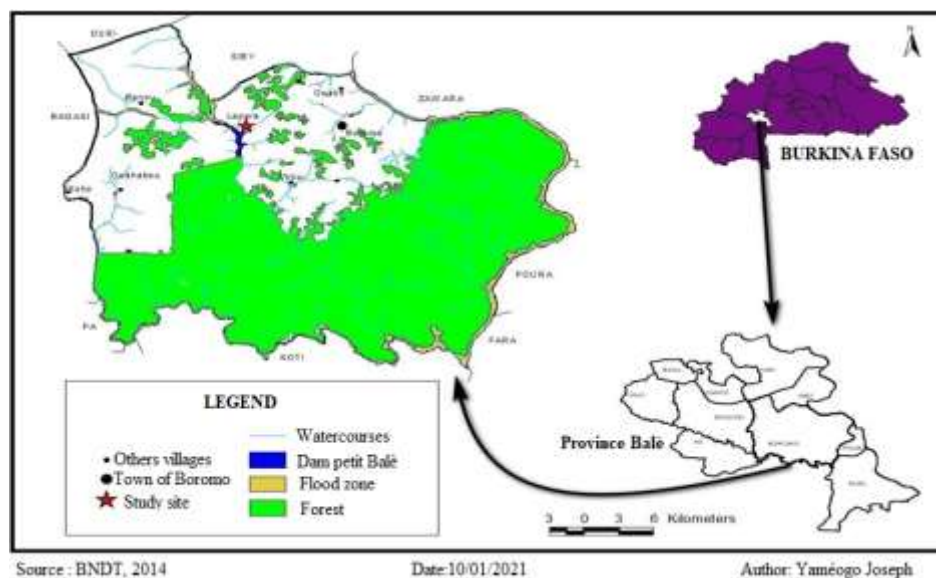


Figure 1. Localization of study site

The region has a Sudano-Sahelian climate, with an alternating dry season (November to May) and rainy season (June to September-October), with maximum rainfall in July and August (Yaméogo et al., 2022).

Data Collection Methods

They are based on field surveys. Indeed, in the study area, a survey was carried out over a period of four (04) months (January-April 2023). The population concerned by the study was the banana producers around the Petit Balè dam, in the village of Lapara, in the commune of Boromo. 50% of the banana growers were involved in the study, i.e. 100 banana growers in the study village. The surveys focused on the perception of extreme rainfall events, their impacts on banana producers. The extreme climate indices that the farmers have to face are listed in Table 1.

Table 1. Producer-reported climate index extremes

Element	Index	Definition according to the Expert Team on Climate Change Detection, Monitoring and Indices (ETCCDMI)	Definition as provided by the banana growers	Unit
Temperature	TXx	Annual maximum temperature	Very high temperature	°C
	TXn	Annual minimum temperature	Low temperatures	°C
Precipitation	R1mm	Number of days with rainfall ≥ 1 mm	Waterlogging of the ground for a few minutes	day
	R10mm	Number of days with rainfall ≥ 10 mm	Heavy run-off of rainwater for several hours	day
	R20mm	Number of days with rainfall ≥ 20 mm	Seedlings are underwater for several days	day
	SDII	Simple daily intensity index	Heavy rain (with wind and for a long period of time)	mm/day
	CWD	Consecutive wet days	Flooding of the major bed of the Petit Balè dam for several days	days
	R95p	Very wet days	Heavy rain (associated with large quantities of water)	mm

Source: Gnjata et al., 2021; Field surveys, January-April 2023

Data Processing Methods and Analysis

The methods used to analyse the primary data consist of calculating: the index of occurrence of extreme climatic events, ordinal logistic regression, and the problem confrontation index.

Index of relative importance of extreme climatic events (IRIECE)

The assessment of climatic extremes makes extensive use of importance index methods (Ndamani & Watanabe, 2017; Likinaw et al., 2022; Liu et al., 2022) whose formula is (Kassem et al., 2020):

$$IRIECE = \frac{\sum W}{A * N} \tag{1}$$

Where N is the total number of respondents; A is the highest weight (1...3): W is the weight assigned to each factor by respondents on the Likert scale shown in Table 2.

Table 2. Response categories and their weight

Response	Weight
Very common (VF)	3
Frequent (F)	2
Uncommon frequency (UF)	1
Frequency Unimportant (FU)	0

Source: Adapted from Abd El-Razek et al., 2008

Ordered logit model (OLM)

The perception of extreme weather events is recorded on a Likert ordinal scale. The ordered logit model (OLM) is therefore used to capture the factors that determine banana growers' perceptions of extreme weather events. The purpose of this model is the prediction of relationships between independent variables and perceptions of the types of extreme weather events. The dependent variables are the types of extreme climate events perceived by farmers, and the independent variables are socio-economic characteristics (age, gender, level of education, distance from the dam and income level). The ordinal logistic model used in this study is as follows (Ehsan et al., 2022):

$$\text{Logit } Y = \ln \left(\frac{\text{prob}(\text{cat.} \leq j)}{\text{prob}(\text{cat.} \geq j)} \right) = \alpha_i + (\beta_i \times X_i) \tag{2}$$

Where, Y represents the types of extreme climate events perceived (with Very frequent (3), Frequent (2), Infrequent (1), Unimportant (0)), j represents the categories of the ordinal dependent variable and j -1 is the cumulative logit, α is the constant, β is the parameter and xi is a set of independent variables (binary and/or continuous).

Problem confrontation index

The problems faced by producers after the occurrence of extreme climate events are expressed through the Problem Confrontation Index (PCI), which is a measure for identifying problems and constraints that are tabulated according to their severity (Kabir et al., 2019). several studies (Hossain et al., 2011; Roy et al., 2013; Mithun et al., 2018; Popoola et al., 2020; Antwi-Agyei et al., 2021) use the index to elucidate the problems encountered by respondents, whose formula is as follows (Pickon & He, 2021):

$$PCI = (P_H \times 3) + (P_M \times 2) + (P_L \times 1) + (P_N \times 0) \tag{3}$$

Where, PCI= problem confrontation index, P_H= number of producers finding the problem high, P_M = number of producers finding the medium problem, P_L=number of producers finding the low problem, P_N= number of producers finding no problem. The response options were placed on a Likert scale as follows: high, medium, low, and not at all. The scores assigned to the responses were 3, 2, 1, and 0 respectively.

RESULT AND DISCUSSION

Perception of Extreme Climatic Events and Factors of Influence

Socio-economic and demographic characteristics of banana growers

Banana growers have a wide range of socio-economic and sociodemographic characteristics (Figure 2).

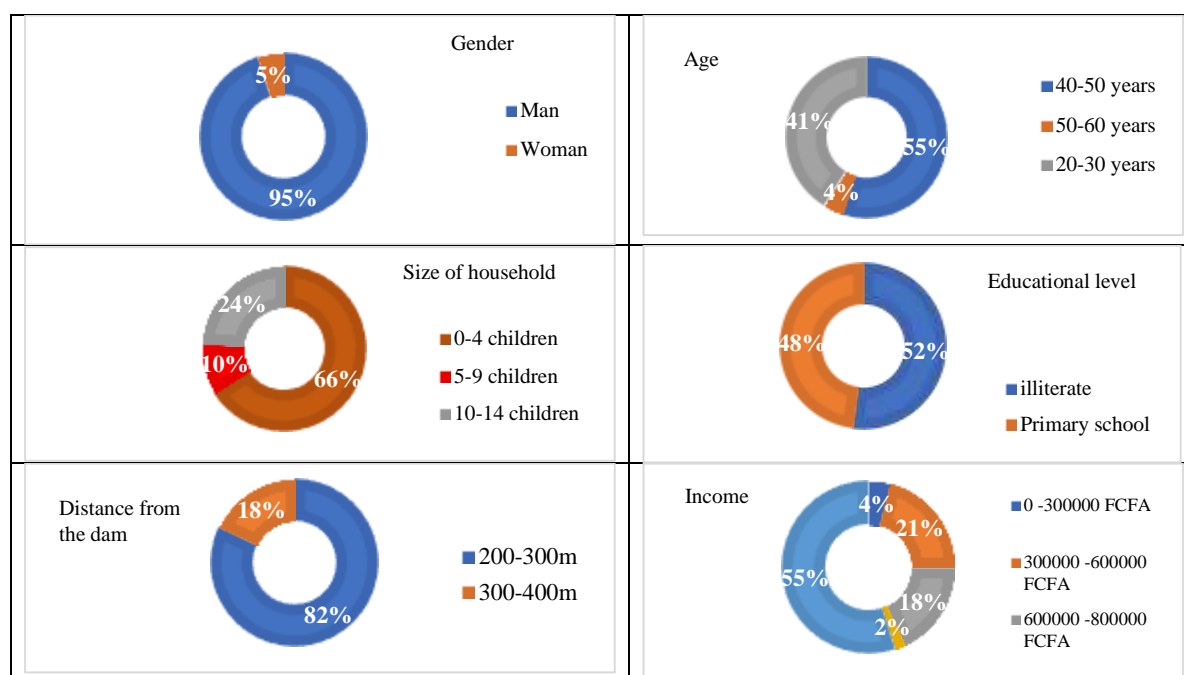


Figure 2. Socio-economic and demographic characteristics

The figure shows that 95% of the sample were men, with 55% in the 40-50 age bracket, 41% in the 20-30 age bracket and 4% in the 50-60 age bracket. 52% of respondents were illiterate, compared with 42% who had attended primary school. 55% of respondents have an annual income of between 0 and 300,000 CFA francs, compared with 21% who earn between 300,000 and 600,000 CFA francs. 82% of respondents have plots of land between 200 and 300 meters from the Petits Balè dam.

Perception of extreme climatic events

Table 3 shows that farmers' perceptions are based on heavy and intense rainfall (R95P, SDII, R1mm, R10mm, R20mm, CWD). As far as temperature is concerned, the scorching nature of the temperatures (TXx) is revealed by producers.

Table 3. Producers' perceptions of climatic extremes

Extreme climatic seen by producers	Very frequent (3)	Frequent (2)	Infrequent (1)	Unimportant (0)	IRIECE	Rank
Rain						
Heavy rain (associated with large quantities of water) (R95P)	45 (26.68%)	130 (68.42%)	15 (7.90%)	0 (0%)	63.33	2 nd
Heavy rain (with wind and for a long period of time) (SDII)	105 (51.23%)	90 (43.90%)	10 (4.88%)	0 (0%)	68.33	1 st
Waterlogging of the ground for a few minutes (R1mm)	9 (7.56%)	80 (67.23%)	30 (25.21%)	0 (0%)	39.66	6 th
Heavy run-off of rainwater for several hours (R10mm)	0 (0%)	86 (71.07%)	35 (28.92%)	0 (0%)	40.33	5 th

Flooding of the major bed of the Petit Balè dam for several days (CWD)	9 (5.23%)	134 (77.91%)	29 (16.86%)	0 (0%)	57.33	3 th
Seedlings are underwater for several days (R20mm)	21 (12.28%)	120 (70.17%)	30 (17.54%)	0 (0%)	57	4 th
Temperature						
Seedlings wither as temperatures rise in the dry season (TXx)	180 (72%)	60 (24%)	10 (4%)	0 (0%)	83.33	1 st
During the dry season, the water in the dam is so hot that fish are scarce (TXx).	150 (63.83%)	80 (34.04%)	5 (2.13%)	0 (0%)	78.33	2 rd

Source: Field surveys, January-April 2023

This table shows that the first extreme rainfall event affecting bananas considered by producers is the SDII, R95P, CWD) with IRIECE 68.33, 63.33 and 57.33 respectively. This was followed by R20mm, R10mm and R1mm. The occurrence of scorching temperatures (TXx) during the dry season is considered an extreme temperature by producers. In addition, 68.42% of farmers stated that R95P was frequent during the period 1991-2021. SDII is very frequent and frequent with 51.23% and 43.90% of banana growers respectively. R10mm and CWD are also frequent according to growers. Torrid temperatures were observed very frequently by banana growers during the 1991-2021 period.

The perceptions of banana growers near the Petit Balè dam are also reported by several authors in Burkina Faso. De Longueville et al (2015) note that extreme rainfall (SDII, R10mm, R20mm, PXJA) is increasing in Burkina Faso. This finding is confirmed by Yanogo and Yameogo (2023), since the occurrence of extreme rainfall (total wet days (rainfall ≥ 1 mm) (JP), frequency of intense rainfall (P95 (day), intensity of rainy days (SDII (mm/day), maximum daily rainfall (PXJA (mm))) was observed between 1990 and 2020. Romero et al (2011) also report an increase in maximum temperatures, which could lead to an increase in the country's evapotranspiration potential. This increase in precipitation extremes is a global trend in West Africa between 1961 and 2010. In fact, most West African countries were also affected by the emergence of extreme indices during this period (1961-2010) (Barry et al., 2018).

Socio-economic factors influence perceptions of climate extremes

The perceptions of smallholder banana growers depend on socio-economic characteristics. The perception of extremes such as Heavy rain (associated with large quantities of water) (R95P), Heavy rain (with wind and for a long period of time) (SDII) depends on the income level and age of the growers. For the case of Flooding of the major bed of the Petit Balè dam (CWD), seedlings underwater for several days (R20mm), age, household size and distance from the dam influence these rainfall extremes. As for the wilting of the plants with the increase of the dry season temperatures, the size of the household, the age and the level of education have an effect on the extreme temperature index. Tables 4, 5 and 6 below show in detail the factors influencing the perception of climate extremes.

However, other studies do not fully support the findings regarding the influence of socio-demographic factors on the perception of climate extremes. In Ghana, Yiridomoh et al. (2021) found that gender influences climate risk perception, with women more likely to perceive climate extremes. Abuloye and Moruff (2016) came to the same conclusion in Nigeria. However, in this study, gender did not influence the perception of climate extremes, which could be explained by the fact that few women were able to respond, unlike in Ghana and Nigeria where women made up almost the entire research sample. Furthermore, Lechowska (2018) notes that when climate extremes cause climate risks, such as flooding, the socio-

economic and demographic factors of the population (gender, age, education, income, number of children) are particularly affected by the risk.

Other studies (Kellens et al., 2011; Wang et al., 2018; Liu et al., 2022) have concluded that the perception of flood risk is significantly correlated with age, marital status, education, monthly income, occupation, experience and distance from the dam.

Table 4. Regression result between R95P, SDII and socioeconomic characteristics

Heavy rain (associated with large quantities of water) (R95P)				Estimates of parameters		Heavy rain (with wind and for a long period of time) (SDII)				Estimates of parameters	
				95% Confidence Interval						95% Confidence Interval	
		ddl	p-value	Lower Bound	Upper Bound			ddl	p-value	Lower Bound	Upper Bound
Threshold	[Heavy rain (associated with large quantities of water) (R95P) = 1]	1	.466	-5.379	2.461	Threshold	[Heavy rain (with wind and for a long period of time) (SDII) = 1]	1	.825	-4.337	5.438
	[Heavy rain (associated with large quantities of water) (R95P) = 2]	1	.371	-2.099	5.618		[Heavy rain (with wind and for a long period of time) (SDII) = 2]	1	.015	1.198	11.240
	[Heavy rain (associated with large quantities of water) (R95P) = 3]	1	.055	-.078	7.920						
Position	Age	1	.488	-.255	.534	Position	Age	1	.002*	.330	1.423
	Household size	1	.498	-.129	.266		Household size	1	.252	-.471	.124
	Education level	1	.693	-.837	1.260		Education level	1	.057	-.038	2.578
	Distance to dam	1	.111	-.241	2.334		Distance to dam	1	.344	-2.111	.736
	Income level	1	.005*	-.604	-.107		Income level	1	.054	-.006	.671

Note: *** p ≤ 0.001, **p ≤ 0.01; * p ≤ 0.05

Table 5. Regression result between CWD, R20mm and socioeconomic characteristics

Flooding of the major bed of the Petit Balè dam for several days (CWD)				Estimates of parameters		Seedlings are underwater for several days (R20mm)				Estimates of parameters	
				95% Confidence Interval						95% Confidence Interval	
		ddl	p-value	Lower Bound	Upper Bound			ddl	p-value	Lower Bound	Upper Bound
Threshold	[Flooding of the major bed of the Petit Balè dam for several days (CWD) = 1]	1	.308	-2.217	7,030	Threshold	[Seedlings are underwater for several days (R20mm) = 1]	1	.239	-1.657	6.650
	[Flooding of the major bed of the Petit Balè dam for several days (CWD) = 2]	1	.001	3.674	13,457		[Seedlings are underwater for several days) (R20mm) = 2]	1	.003	2.109	10.343
	[Flooding of the major bed of the Petit Balè dam for several days (CWD) = 3]	1	.000	6.635	17,410		[Seedlings are underwater for several days) (R20mm) = 3]		.000	3.957	12.531
Position	Age	1	.001**	.426	1,545	Position	Age	1	.013*	.105	.908
	Household size	1	.009*	.094	,658		Household size	1	.787	-.168	.221
	Education level	1	.824	-1.103	1,386		Education level	1	.090	-.143	1.978
	Distance to dam	1	.001**	1.057	4,335		Distance to dam	1	.024*	.198	2.855
	Income level	1	.830	-.344	,276		Income level	1	.424	-.138	.328

Note: *** p ≤ 0.001, **p ≤ 0.01; * p ≤ 0.05

Table 6. Regression result TXx and socioeconomic characteristics

Seedlings wither as temperatures rise in the dry season (TXx)					Estimates of parameters	
					95% Confidence Interval	
		ddl	p-value	Lower Bound	Upper Bound	
Threshold	[Seedlings wither as temperatures rise in the dry season (TXx) = 1]	1	.226	-1.653	7.011	
	[Seedlings wither as temperatures rise in the dry season (TXx)= 2]	1	.006	1.839	10.859	
Position	Age	1	.035*	.033	.935	
	Household size	1	.023*	.038	.508	
	Education level	1	.035*	.090	2.554	
	Distance to dam	1	.165	-2.461	.420	
	Income level	1	.593	-.204	.357	

Note: *** p ≤ 0.001, **p ≤ 0.01; * p ≤ 0.05

Problems Faced by Producers as a Result of Extreme Climatic Events

The occurrence of extreme weather conditions has caused problems for producers in the production and sale of bananas. The problems faced by small producers are listed in Table 7 below.

Table 7. The problems faced by small-scale producers

Problems	No problem (0)	Low problem (1)	Medium problem (2)	Problem high (3)	PCI	Rank
Banana production losses	0 (0%)	5 (2.32%)	150 (79.77%)	60 (27.91%)	215	1 st
Reducing the surface area of parcels located close to the major bed of the Petit Balè dam	0 (0%)	30 (18.18%)	120 (72.72%)	15 (9.09%)	165	2 rd
Decline in producers' incomes	0 (0%)	75 (74.26%)	20 (19.80%)	6 (5.94%)	101	4 th
Increase in banana diseases due to the presence of water	0 (0%)	8 (100%)	0 (0%)	0 (0%)	8	6 th
Decline in the quality of bananas	0 (0%)	60 (54.54%)	20 (18.18%)	30 (27.27%)	110	3 th
Loss of banana seedlings	0 (0%)	15 (60%)	10 (40%)	0 (0%)	25	5 th

Source: January-April 2023

The table shows that 79.77% of growers consider loss of production to be a medium problem, while 27.91% consider it to be a high problem. The loss of banana plantations is due to the rise in temperature, which causes the drying and yellowing of the banana leaves (Figure 3).



Figure 3. Banana leaves drying and yellowing after scorching temperatures in April 2023

In addition, some banana plants find it difficult to develop properly. Figure 4 below shows a stunted plant as a result of high temperatures.



Figure 4. Banana plants dying due to water stress caused by rising temperatures

This leads to lost bananas and therefore reduced productivity. Similarly, 72.72% of respondents had noted a reduction in the size of their plots, but considered this to be a medium problem. On the other hand, the reduction in income, the increase in banana diseases, the reduction in banana quality and the loss of banana plants were considered to be minor problems by producers.

The problems caused by climate extremes are confirmed by other studies. For Calberto et al. (2016), the impact of weather events causes problems for banana productivity and profitability worldwide, particularly in Africa. Varma and Bebbler (2019), Karienyee et al. (2021), Watts et al. (2023) report that increasing climatic parameters are lowering banana yields worldwide. This could be because high temperatures can damage the plant and fruit, while low temperatures slow growth and affect fruit quality (Ortiz, 2012). Noleppa et al. (2021) have identified other problems, such as the fall in banana prices and the impact on the incomes and profitability of producers in Latin American countries (Colombia, Costa Rica, the Dominican Republic, and Ecuador).

CONCLUSION

Climate extremes are a reality for small banana growers, as they perceive them in terms of both temperature and rainfall. However, producers' perceptions are influenced by socio-demographic and socio-economic characteristics. Extreme climatic conditions also have an impact on banana production (reduction in banana quality) and on farmers (loss of banana production, reduction in farmers' incomes). There is therefore an urgent need for the Boromo commune to help banana growers cope with the region's extreme climatic.

REFERENCES

- Abbasnia, M., & Toros, H. (2020). Trend analysis of weather extremes across the coastal and non-coastal areas (case study: Turkey). *Journal of Earth System Science*, 129, 1-13. <https://doi.org/10.1007/s12040-020-1359-3>
- Abd El-Razek, M. E., Bassioni, H. A., & Mobarak, A. M. (2008). Causes of delay in building construction projects in Egypt. *Journal of Construction Engineering and Management*, 134(11), 831-841.
- Abuloye, A., & Moruff, G. A. (2016). Climate variability and extreme climate events: Rural women farmers' perception in southwest Nigeria. *Journal of Geography & Natural Disasters*, 6(2), 1-4. <https://doi.org/10.4172/2167-0587.1000166>
- Adams, R. M., Hurd, B. H., Lenhart, S., & Leary, N. (1998). Effects of global climate change on agriculture: an interpretative review. *Climate Research*, 11(1), 19-30. <https://doi.org/10.3354/cr011019>

- Ajjur, S. B., & Riffi, M. I. (2020). Analysis of the observed trends in daily extreme precipitation indices in Gaza Strip during 1974–2016. *International Journal of Climatology*, 40(14), 6189-6200. <https://doi.org/10.1002/joc.6576>
- Adeyeri, O. E., Lawin, A. E., Laux, P., Ishola, K. A., & Ige, S. O. (2019). Analysis of climate extreme indices over the Komadugu-Yobe basin, Lake Chad region: Past and future occurrences. *Weather and Climate Extremes*, 23, 100194. <https://doi.org/10.1016/j.wace.2019.100194>
- Alexandrov, V. A., & Eitzinger, J. (2005). The potential effect of climate change and elevated air carbon dioxide on agricultural crop production in central and southeastern Europe. *Journal of Crop Improvement*, 13(1-2), 291-331. https://doi.org/10.1300/J411v13n01_14
- Antwi-Agyei, P., Abalo, E. M., Dougill, A. J., & Baffour-Ata, F. (2021). Motivations, enablers and barriers to the adoption of climate-smart agricultural practices by smallholder farmers: Evidence from the transitional and savannah agroecological zones of Ghana. *Regional Sustainability*, 2(4), 375-386. <https://doi.org/10.1016/j.regsus.2022.01.005>
- Aryal, J. P., Sapkota, T. B., Khurana, R., Khatri-Chhetri, A., Rahut, D. B., & Jat, M. L. (2020). Climate change and agriculture in South Asia: Adaptation options in smallholder production systems. *Environment, Development and Sustainability*, 22(6), 5045-5075. <https://doi.org/10.1007/s10668-019-00414-4>
- Ayanlade, A., Oluwaranti, A., Ayanlade, O. S., Borderon, M., Sterly, H., Sakdapolrak, P., ... & Ayinde, A. F. (2022). Extreme climate events in sub-Saharan Africa: A call for improving agricultural technology transfer to enhance adaptive capacity. *Climate Services*, 27, 100311. <https://doi.org/10.1016/j.cliser.2022.100311>
- Ayinde, O. E., Muchie, M., & Olatunji, G. B. (2011). Effect of climate change on agricultural productivity in Nigeria: a co-integration model approach. *Journal of Human Ecology*, 35(3), 189-194.
- Barry, A. A., Caesar, J., Klein Tank, A. M. G., Aguilar, E., McSweeney, C., Cyrille, A. M., Ni-kiema, M. P., Narcisse, K. B., Sima, F., Stafford, G., Touray, L. M., Ayilari-Naa, J. A., Mendes, C. L., Tounkara, M., Gar-Glahn, E. V. S., Coulibaly, M. S., Dieh, M. F., Mouhaimouni, M., Oyegade, J.A, Sambou, E., & Laogbessi, E. T. (2018). West Africa cli-mate extremes and climate change indices. *International Journal of Climatology*, 38, 1-18. <https://doi.org/10.1002/joc.5420>
- Blanc, E. (2012). The impact of climate change on crop yields in Sub-Saharan Africa. *American Journal of Climate Change*, 1(1), 1-13. <https://doi.org/10.4236/ajcc.2012.11001>
- Barrios, S., Ouattara, B., & Strobl, E. (2008). The impact of climatic change on agricultural production: Is it different for Africa? *Food Policy*, 33(4), 287-298. <https://doi.org/10.1016/j.foodpol.2008.01.003>
- Boansi, D., Tambo, J. A., & Müller, M. (2017). Analysis of farmers' adaptation to weather extremes in West African Sudan Savanna. *Weather and Climate Extremes*, 16, 1-13. <https://doi.org/10.1016/j.wace.2017.03.001>
- Calberto, G., Blake, D., Staver, C., Carvajal M & Brown D. (2016). The frequency and effects of weather events on banana productivity-results of a global survey. In X International Symposium on Banana: *ISHS-ProMusa Symposium on Agroecological Approaches to Promote Innovative Banana*, 1196, 179-186.
- Christensen, T.R., Lund, M., Skov, K., Abermann, J., López-Blanco, E., Scheller, J., Scheel, M., Jackowicz-Korczynski, M., Langley, K., Murphy, M.J. & Mastepanov, M., 2021. Multiple ecosystem effects of extreme weather events in the Arctic. *Ecosystems*, 24(1), 122-136. <https://doi.org/10.1007/s10021-020-00507-6>

- Costa, R. L., de Mello Baptista, G. M., Gomes, H. B., dos Santos Silva, F. D., da Rocha Júnior, R. L., de Araújo Salvador, M., & Herdies, D. L. (2020). Analysis of climate extremes indices over northeast Brazil from 1961 to 2014. *Weather and Climate Extremes*, 28, 100254. <https://doi.org/10.1016/j.wace.2020.100254>
- De Longueville, F., Gemenne, F., & Ozer, P. (2015). Perception des changements de précipitation et migration au Burkina Faso. In 28e *Colloque International de l'Association Internationale de Climatologie*. ULg-Université de Liège, Belgium.
- Dos Reis, L. C., Silva, C. M. S. E., Bezerra, B. G., Mutti, P. R., Spyrides, M. H. C., & Da Silva, P. E. (2020). Analysis of climate extreme indices in the MATOPIBA region, Brazil. *Pure and Applied Geophysics*, 177, 4457-4478. <https://doi.org/10.1007/s00024-020-02474-4>
- Ebi, K.L., Capon, A., Berry, P., Broderick, C., de Dear, R., Havenith, G., Honda, Y., Kovats, R.S., Ma, W., Malik, A. & Morris, N.B. (2021). Hot weather and heat extremes: health risks. *The Lancet*, 398(10301), 698-708. [https://doi.org/10.1016/S0140-6736\(21\)01208-3](https://doi.org/10.1016/S0140-6736(21)01208-3)
- Eini, M. R., Rahmati, A., Salmani, H., Brocca, L., & Piniewski, M. (2022). Detecting characteristics of extreme precipitation events using regional and satellite-based precipitation gridded datasets over a region in Central Europe. *Science of The Total Environment*, 852, 158497. <https://doi.org/10.1016/j.scitotenv.2022.158497>
- Ehsan, S., Begum, R. A., Maulud, K. N. A., & Mia, M. S. (2022). Assessing household perception, autonomous adaptation and economic value of adaptation benefits: Evidence from West Coast of Peninsular Malaysia. *Advances in Climate Change Research*, 13(5), 738-758. <https://doi.org/10.1016/j.accre.2022.06.002>
- Gnjato, S., Popov, T., Ivanišević, M., & Trbić, G. (2021). Changes in extreme climate indices in Sarajevo (Bosnia and Herzegovina). *Glasnik Srpskog geografskog drustva*, 101(2), 1-21. <https://doi.org/10.2298/GSGD2102001G>
- Hasegawa, T., Sakurai, G., Fujimori, S., Takahashi, K., Hijioka, Y., & Masui, T. (2021). Extreme climate events increase risk of global food insecurity and adaptation needs. *Nature Food*, 2(8), 587-595. <https://doi.org/10.1038/s43016-021-00335-4>
- Hossain, K. Z., Rayhan, S. J., Arif, M. N., & Rahman, M. M. (2011). Farmers' problem confrontation towards seed potato production. *Dev. Ctry. Stud*, 1, 27-33. <https://www.iiste.org/Journals/index.php/DCS/article/viewFile/707/606>
- Ibrahim, B., Karambiri, H., Polcher, J., Yacouba, H., & Ribstein, P. (2014). Changes in rainfall regime over Burkina Faso under the climate change conditions simulated by 5 regional climate models. *Climate Dynamics*, 42, 1363-1381. <https://doi.org/10.1007/s00382-013-1837-2>
- Isik, M., & Devadoss, S. (2006). An analysis of the impact of climate change on crop yields and yield variability. *Applied Economics*, 38(7), 835-844. <https://doi.org/10.1080/00036840500193682>
- Kabir, M. S., Radović Marković, M., & Radulović, D. (2019). The determinants of income of rural women in Bangladesh. *Sustainability*, 11(20), 5842. <https://doi.org/10.3390/su11205842>
- Karienyé, D. K., Nduru, G. M., & Kamiri, H. W. (2021). Climate variability and adaptation among small holder banana farmers in mountain regions of Kenya. *Geography, Environment, Sustainability*, 14(1), 161-170. <https://doi.org/10.24057/2071-9388-2019-27>
- Kassem, M. A., Khoiry, M. A., & Hamzah, N. (2020). Using relative importance index method for developing risk map in oil and gas construction projects. *Jurnal Kejuruteraan*, 32(3), 441-453. [https://doi.org/10.17576/jkukm-2020-32\(3\)-09](https://doi.org/10.17576/jkukm-2020-32(3)-09)
- Kellens, W., Zaalberg, R., Neutens, T., Vanneuville, W., & De Maeyer, P. (2011). An analysis of the public perception of flood risk on the Belgian coast. *Risk Analysis: An*

- International Journal*, 31(7), 1055-1068. <https://doi.org/10.1111/j.1539-6924.2010.01571.x>
- Lechowska, E. (2018). What determines flood risk perception? A review of factors of flood risk perception and relations between its basic elements. *Natural Hazards*, 94(3), 1341-1366. <https://doi.org/10.1007/s11069-018-3480-z>
- Lesk, C., Rowhani, P., & Ramankutty, N. (2016). Influence of extreme weather disasters on global crop production. *Nature*, 529(7584), 84-87. <https://doi.org/10.1038/nature16467>
- Likinaw, A., Bewket, W., & Alemayehu, A. (2022). Smallholder farmers' perceptions and adaptation strategies to climate change risks in northwest Ethiopia. *International Journal of Climate Change Strategies and Management*, 1-20. <https://doi.org/10.1108/IJCCSM-01-2022-0001>
- Liu, D., Li, M., Li, Y. and Chen, H., 2022. Assessment of Public Flood Risk Perception and Influencing Factors: An Example of Jiaozuo City, China. *Sustainability*, 14(15), 9475. <https://doi.org/10.3390/su14159475>
- Lobell, D. B., & Gourdji, S. M. (2012). The influence of climate change on global crop productivity. *Plant Physiology*, 160(4), 1686-1697. <https://doi.org/10.1104/pp.112.208298>
- Lodoun, T., Giannini, A., Traoré, P. S., Somé, L., Sanon, M., Vaksmann, M., & Rasolodimby, J. M. (2013). Changes in seasonal descriptors of precipitation in Burkina Faso associated with late 20th century drought and recovery in West Africa. *Environmental Development*, 5, 96-108.
- Mendelsohn, R. (2014). The impact of climate change on agriculture in Asia. *Journal of Integrative Agriculture*, 13(4), 660-665. <https://doi.org/10.1016/j.envdev.2012.11.010>
- Ministry of Agriculture and Amenagements Hydraulics (2016). Preliminary draft of the national program to revitalize the banana sector (PN-REDYFBanane), Ouagadougou, Burkina Faso, 14.
- Mason, L. R., Sharma, B. B., Walters, J. E., & Ekenga, C. C. (2020). Mental Health and weather extremes in a Southeastern US city: exploring group differences by race. *International Journal of Environmental Research and Public Health*, 17(10), 3411. <https://doi.org/10.3390/ijerph17103411>
- Mithun, M. N. A. S., Hoque, M. J., & Rahman, M. H. (2018). Problem Confrontation in Participating Professional Trainings by the Sub Assistant Agriculture Officers. *Bangladesh Journal of Extension Education*, 1011, 3916. <http://bjee.com.bd/public/articles/Problems-confrontation-in-professional-training.pdf>
- Nangombe, S., Zhou, T., Zhang, W., Wu, B., Hu, S., Zou, L., & Li, D. (2018). Record-breaking climate extremes in Africa under stabilized 1.5 C and 2 C global warming scenarios. *Nature Climate Change*, 8(5), 375-380. <https://doi.org/10.1038/s41558-018-0145-6>
- Ndamani, F., & Watanabe, T. (2017). Determinants of farmers' climate risk perceptions in agriculture-A rural Ghana perspective. *Water*, 9(3), 210. <https://doi.org/10.3390/w9030210>
- Noleppa, S., Gornott, C., Luttringhaus, S., Hackenberg, I., Gleixner, S. (2021). *Climate change and its effects on banana production: Colombia, Costa Rica, the Dominican Republic, and Ecuador*, Potsdam Institute for Climate Impact Research, 199.
- Pagani, V., Guarneri, T., Fumagalli, D., Movedi, E., Testi, L., Klein, T., Calanca, P., Villalobos, F., Lopez-Bernal, A., Niemeyer, S. and Bellocchi, G., 2017. Improving cereal yield forecasts in Europe–The impact of weather extremes. *European Journal of Agronomy*, 89, 97-106. <https://doi.org/10.1016/j.eja.2017.06.010>
- Pervin, L., & Khan, M. S. M. (2022). Variability and trends of climate extremes indices from the observed and downscaled GCMs data over 1950–2020 period in Chattogram City,

- Bangladesh. *Journal of Water and Climate Change*, 13(2), 975-998. <https://doi.org/10.2166/wcc.2021.331>
- Pickson, R. B., & He, G. (2021). Smallholder farmers' perceptions, adaptation constraints, and determinants of adaptive capacity to climate change in Chengdu. *SAGE Open*, 11(3), 1-16. <https://doi.org/10.1177/21582440211032638>
- Popoola, O. O., Yusuf, S. F. G., & Monde, N. (2020). Information sources and constraints to climate change adaptation amongst smallholder farmers in Amathole District Municipality, Eastern Cape Province, South Africa. *Sustainability*, 12(14), 5846. <https://doi.org/10.3390/su12145846>
- Ochieng, J., Kirimi, L., & Mathenge, M. (2016). Effects of climate variability and change on agricultural production: The case of small-scale farmers in Kenya. *NJAS-Wageningen journal of life sciences*, 77, 71-78. <https://doi.org/10.1016/j.njas.2016.03.005>
- Olesen, J.E., Trnka, M., Kersebaum, K.C., Skjelvåg, A.O., Seguin, B., Peltonen-Sainio, P., Rossi, F., Kozyra, J. and Micale, F. (2011). Impacts and adaptation of European crop production systems to climate change. *European Journal of Agronomy*, 34(2), 96-112. <https://doi.org/10.1016/j.eja.2010.11.003>
- Ortiz, A. M. (2012). *Climate change impacts on banana production in the Davao Region of the Philippines*. Master Thesis, University of Copenhagen, Faculty of Life Sciences, Copenhagen, Denmark, 115.
- Owusu, V., & Yiridomoh, G. Y. (2021). Assessing the determinants of women farmers' targeted adaptation measures in response to climate extremes in rural Ghana. *Weather and Climate Extremes*, 33, 100353. <https://doi.org/10.1016/j.wace.2021.100353>
- Ozdemir, D. (2021). The impact of climate change on agricultural productivity in Asian countries: a heterogeneous panel data approach. *Environmental Science and Pollution Research*, 1-13. <https://doi.org/10.1007/s11356-021-16291-2>
- Ryan, C., Curley, M., Walsh, S., & Murphy, C. (2022). Long-term trends in extreme precipitation indices in Ireland. *International Journal of Climatology*, 42(7), 4040-4061. <https://doi.org/10.1002/joc.7475>
- Romero, A., Belemvire, A., & Saulière, S. (2011). *Climate change and women farmers in Burkina Faso: impact and adaptation policies and practices*. Oxfam Research Report, 46.
- Roy, D., Farouque, M. G., & Rahman, M. Z. (2013). Problem confrontation of the FFS farmers in participating farmer field school training session. *Progressive Agriculture*, 24(1-2), 273-280. <https://doi.org/10.3329/pa.v24i1-2.19179>
- Sabater, S., Freixa, A., Jiménez, L., López-Doval, J., Pace, G., Pascoal, C., Perujo, N., Craven, D. and González-Trujillo, J.D., 2023. Extreme weather events threaten biodiversity and functions of river ecosystems: evidence from a meta-analysis. *Biological Reviews*, 98(2), 450-461. <https://doi.org/10.1111/brv.12914>
- Shawul, A. A., & Chakma, S. (2020). Trend of extreme precipitation indices and analysis of long-term climate variability in the Upper Awash basin, Ethiopia. *Theoretical and Applied Climatology*, 140(1-2), 635-652. <https://doi.org/10.1007/s00704-020-03112-8>
- St. Clair, S. B., & Lynch, J. P. (2010). The opening of Pandora's Box: climate change impacts on soil fertility and crop nutrition in developing countries. *Plant and Soil*, 335, 101-115. <https://doi.org/10.1007/s11104-010-0328-z>
- Varma, V., & Bebbber, D. P. (2019). Climate change impacts on banana yields around the world. *Nat Clim Change*, 9, 752-757. <https://doi.org/10.1038/s41558-019-0559-9>
- Watts, M., Mpanda, M., Hemp, A., & Peh, K. S. H. (2023). The potential impact of future climate change on the production of a major food and cash crop in tropical (sub) montane homegardens. *Science of the Total Environment*, 865, 161263. <https://doi.org/10.1016/j.scitotenv.2022.161263>

- Yanogo, I. P & Yaméogo, J. (2023). Recent rainfall trends between 1990 and 2020: contrasting characteristics between two climate zones in Burkina Faso (West Africa). *Bulletin of the Serbian Geographical Society*, 103(1), 87-106. <https://glasniksgd.rs/index.php/home/issue/view/107>
- Yaméogo, J., Sanou, K., & Yanogo, P. I. (2022). La recomposition des systèmes de culture dans les bananiers autour du barrage de petit Balé : cas du village de Lapara dans la commune de Boromo, au Burkina Faso. *Akofena, Spécial* 9(1), Décoloniser la recherche scientifique en Lettres et Sciences Humaines : épistémologie, théorie, empirisme et perspectives, Université Houphouët Boigny, Côte d'Ivoire, 271-286.
- Yarou, H., Obada, E., Biao, E. I., Badou, D. F., & Alamou, E. A. (2019). Variabilité Des Extrêmes Pluviométriques Récents Dans Le Bassin Béninois Du Fleuve Niger (1960-2016), Bénin. *Rev. Ivoir. Sci. Technol.*, 34, 112-126.
- Wang, Z., Wang, H., Huang, J., Kang, J. & Han, D., 2018. Analysis of the public flood risk perception in a flood-prone city: The case of Jingdezhen city in China. *Water*, 10(11), 1577. <https://doi.org/10.3390/w10111577>
- Yiridomoh, G. Y., Bonye, S. Z., Derbile, E. K., & Owusu, V. (2022). Women farmers' perceived indices of occurrence and severity of observed climate extremes in rural Savannah, Ghana. *Environment, Development and Sustainability*, 24(1), 810-831. <https://doi.org/10.1007/s10668-021-01471-4>
- Zhang, X & Yang, F. (2004). RCLimDex (1.0) *User Manual*, Climate Research Branch Environment, Canada, 23 p.
- Zhu, Y., Yang, Q., & Zhang, C. (2021). Adaptation strategies and land productivity of banana farmers under climate change in China. *Climate Risk Management*, 34, 100368. <https://doi.org/10.1016/j.crm.2021.100368>