



HAL
open science

Acquiring MRI brain images in awake unrestrained sheep

C Pluchot, Hans Adriaensen, Céline Parias, Cécile Arnould, D Dubreuil, O Lasserre, Scott A. Love, F Elleboudt, K Larose, J.-N Couet, et al.

► **To cite this version:**

C Pluchot, Hans Adriaensen, Céline Parias, Cécile Arnould, D Dubreuil, et al.. Acquiring MRI brain images in awake unrestrained sheep. FENS (Federation of European Neuroscience Societies) REGIONAL MEETING, May 2023, ALGARVE, Portugal. hal-04191525

HAL Id: hal-04191525

<https://hal.science/hal-04191525v1>

Submitted on 30 Aug 2023

HAL is a multi-disciplinary open access archive for the deposit and dissemination of scientific research documents, whether they are published or not. The documents may come from teaching and research institutions in France or abroad, or from public or private research centers.

L'archive ouverte pluridisciplinaire **HAL**, est destinée au dépôt et à la diffusion de documents scientifiques de niveau recherche, publiés ou non, émanant des établissements d'enseignement et de recherche français ou étrangers, des laboratoires publics ou privés.

Sheep voluntarily participate in awake and unrestrained MRI sessions after positive reinforcement-based training



Introduction

Magnetic Resonance Imaging (MRI) is a non-invasive technique that requires the participant to be completely motionless. To date, MRI in awake and unrestrained animals has only been achieved with humans and dogs (Andics et al., 2014). For other species, alternative techniques such as anesthesia (Barrière et al., 2019), restraint (Stefanacci et al., 1998) and/or sedation (Behroozi et al., 2018) have been necessary. MRI studies with sheep have only been conducted under general anesthesia. This ensures the absence of movement and allows relatively long MRI experiments. However, it can also be detrimental to health, disrupt neurovascular coupling (Aksenov et al., 2015) and does not permit the study of higher-level cognition. Here we present a proof of concept that positive reinforcement training in sheep is sufficient to be able to acquire MRI of their brain. Specifically, we are currently using functional MRI to study the mechanisms of vocalization perception in these farm animals.

Method

1. Step-by-step training protocol with 10 lambs (5 ♂ - 5 ♀)

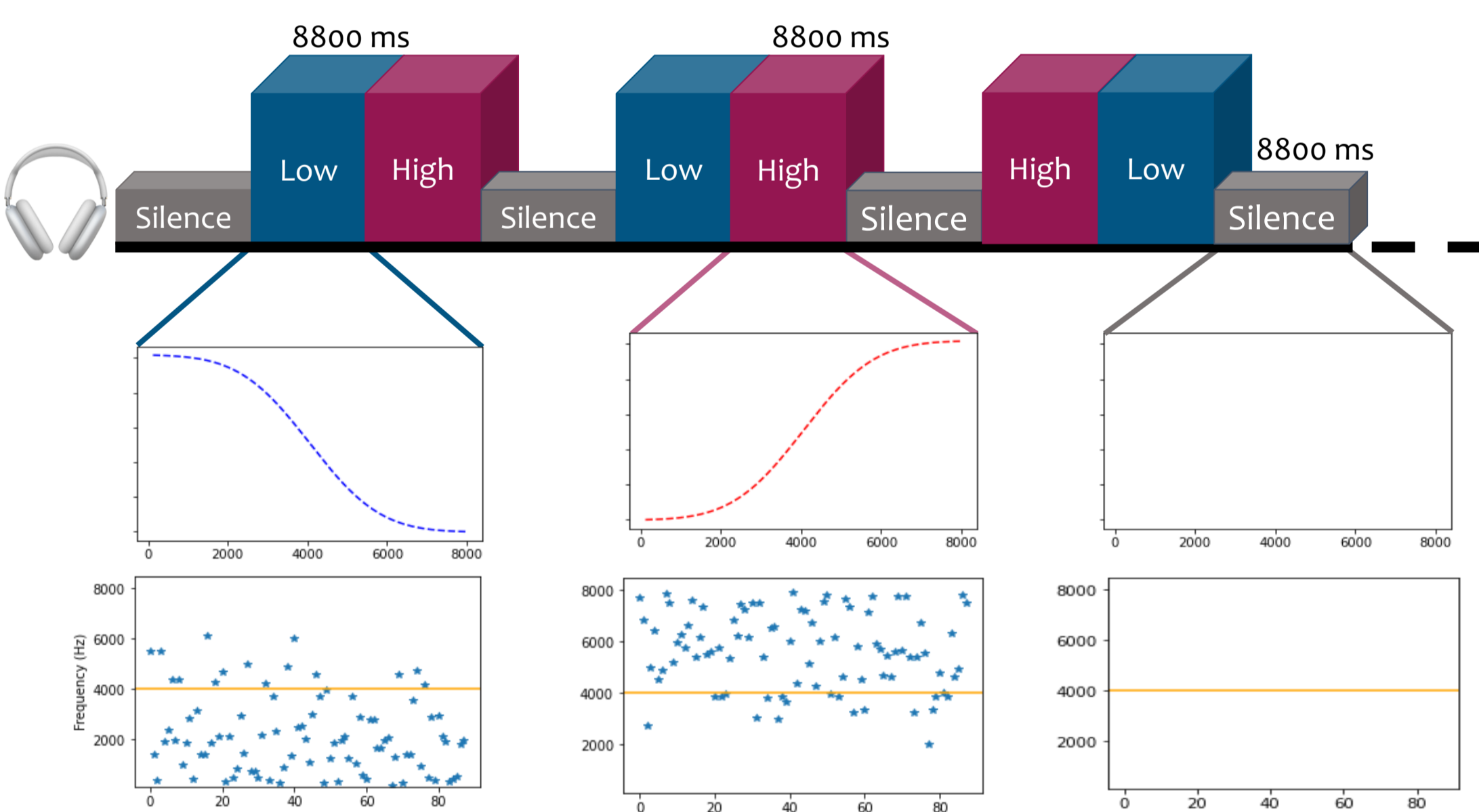
→ Lying motionless on the MRI table for the minimum time required for an acquisition (~10 min)

- **Sheepfold training phase**
(mock MRI table and coil, scanner noise desensitization)
- **MRI room training phase**
(table movements, scanner bore, MRI coil, headphones)

2. MRI acquisition

→ Localize the sheep auditory cortex and identify its functional organization

■ Auditory stimulation paradigm



■ MRI sequences

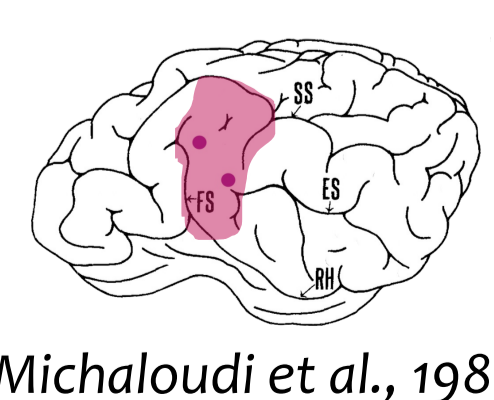
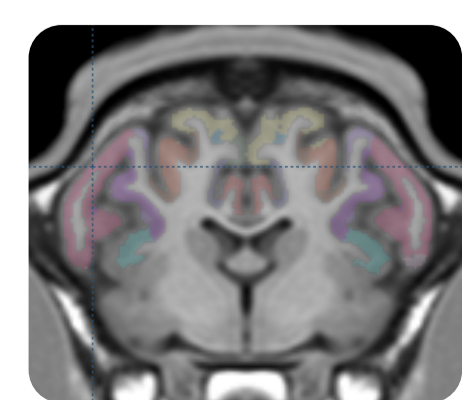
T1-weighted structural scan: TR = 2200 ms, TE = 2.64 ms, flip angle = 12°, voxel size = 1.12 mm³, TA = 2 min 36 sec

Gradient echo fieldmap: TR = 500 ms, TE = 4.92/7.38 ms, flip angle = 55°, voxel size = 1.5 x 1.5 x 2 mm, TA = 1 min 57 sec

EPI functional images: multiband acceleration factor = 2, TR = 2000 ms, TE = 40 ms, flip angle = 12°, number of slices = 40, voxel size = 1.51 mm³, number of volumes = 112, TA = 4 min 04 sec

Discussion

- ❖ Positive reinforcement training of sheep and positive human-animal cooperation are sufficient to enable acquiring MRI images of their brain.
- ❖ This innovative training protocol opens the door to the possibility of conducting animal welfare friendly functional MRI studies with sheep.
- ❖ The preliminary awake sheep fMRI results localize the auditory cortex similarly to the putative region proposed by Michaloudi and colleagues.



(Michaloudi et al., 1986)

Acknowledgements

We would like to thank UE-PAO; Platform PIXANIM and PRC workshop for their invaluable help. This project is funded by the ANR (SheepVoicefMRI : ANR-20-CE20-0001-01) and INRAE Département PHASE

1 CNRS, IFCE, INRAE, Université de Tours, PRC, Nouzilly, France
2 INRAE, UEPAO 1297, Nouzilly, France

ACQUIRING MRI BRAIN IMAGES IN AWAKE UNRESTRAINED SHEEP

C. Pluchot¹, H. Adriaensens¹, C. Parias¹, C. Arnould¹, D. Dubreuil², O. Lasserre², K. Larose², F. Elleboudt¹, J.-N. Couet¹, E. Chaillou¹, S. Love¹

LAMB'S BIRTH

March 2022



GROUP SELECTION

- ❖ Male and female lamb's under artificial feeding
- ❖ Positive interactions with the lambs twice a day, 7 days a week
- ❖ New objects / Exercises [foam, ramp]

March 2022



SHEEPFOLD TRAINING PHASE

- ❖ Climb a ramp to reach the mock MRI
- ❖ Put their head inside the mock MRI
- ❖ Lie still on a moving table

March 2022 to September 2022



MRI ROOM TRAINING PHASE

- ❖ Accept headphones on their ears
- ❖ Put their head inside the real MRI coil
- ❖ Lie still on the moving table
- ❖ Stay motionless inside the scanner bore

September 2022 to now

	Robin	Brook	Maggie	Ted	Léonard	Tony	Lily	Joe	Jackson	Barnita
Lie down on the table	✓	✓	✓	✓	✓	✓	✓	✓	✓	✓
Wear headphones	✓	✓	✓	✓	✓	✓	✓	✓	✓	✓
Head inside the coil	✓	✓	✓	✓	✓	✓	✓	✓	✓	✓
Scanner bore	✓	✓	✓	✓	✓	✓	✓	✓	✓	✓
Stay motionless (~10 min)	✓	✓	✓	✓	✓	✓	✓	✓	✓	✓

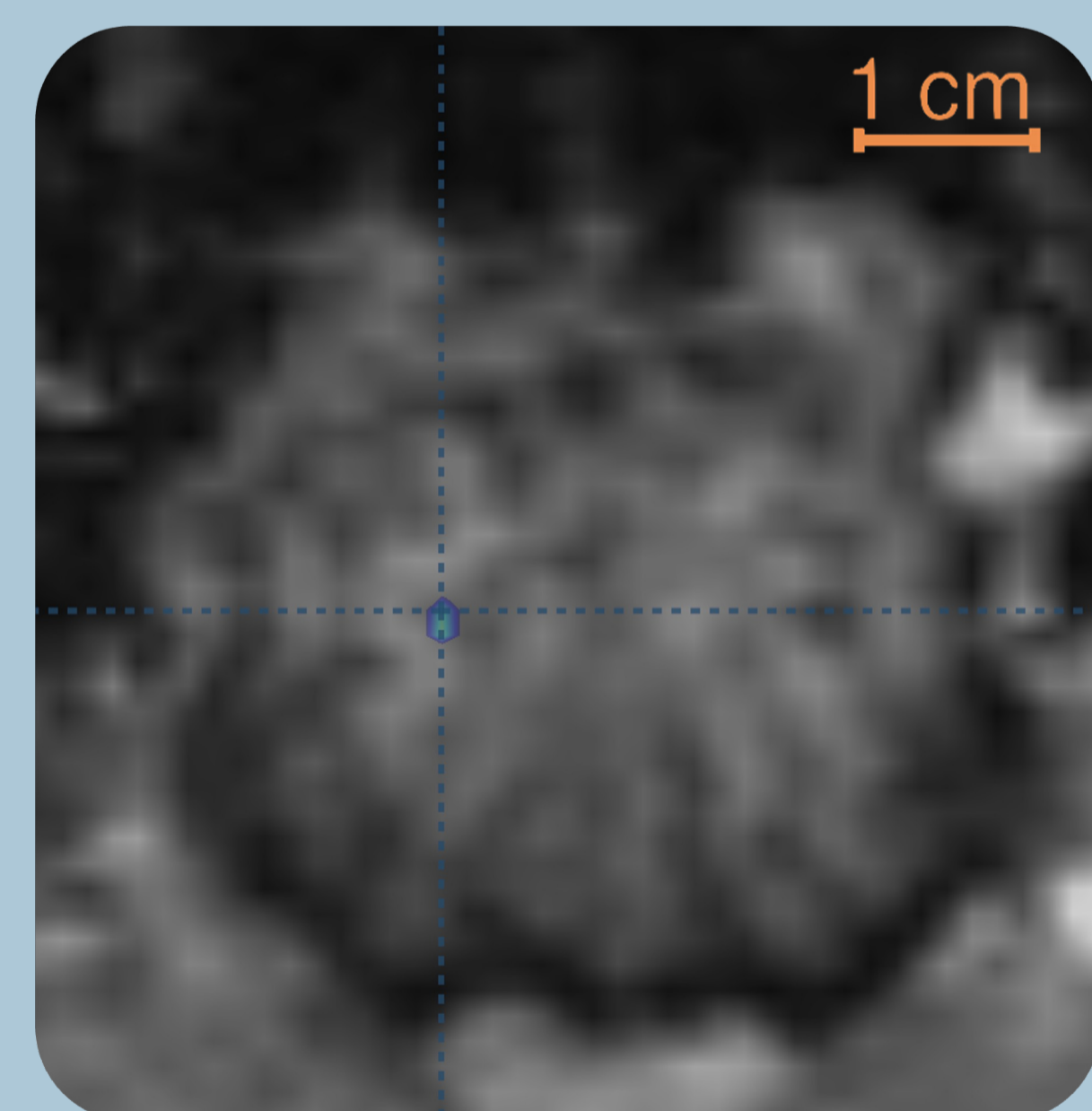
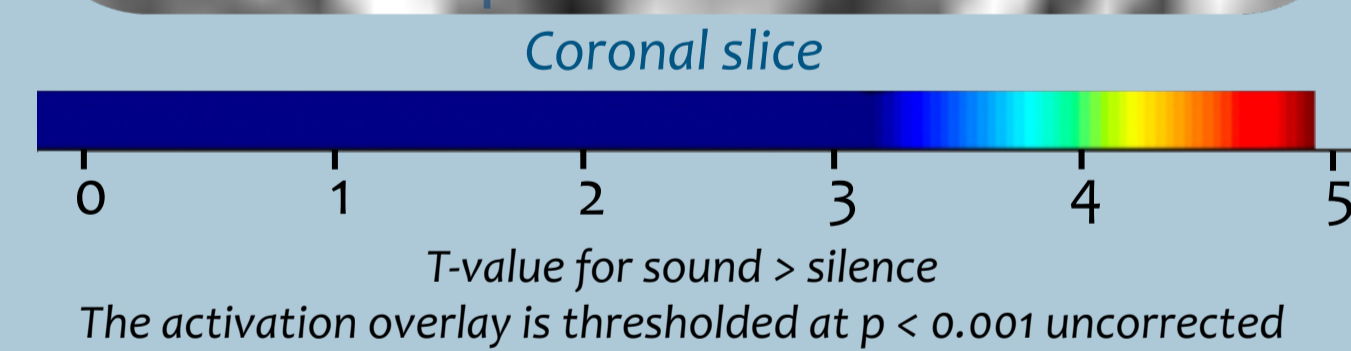
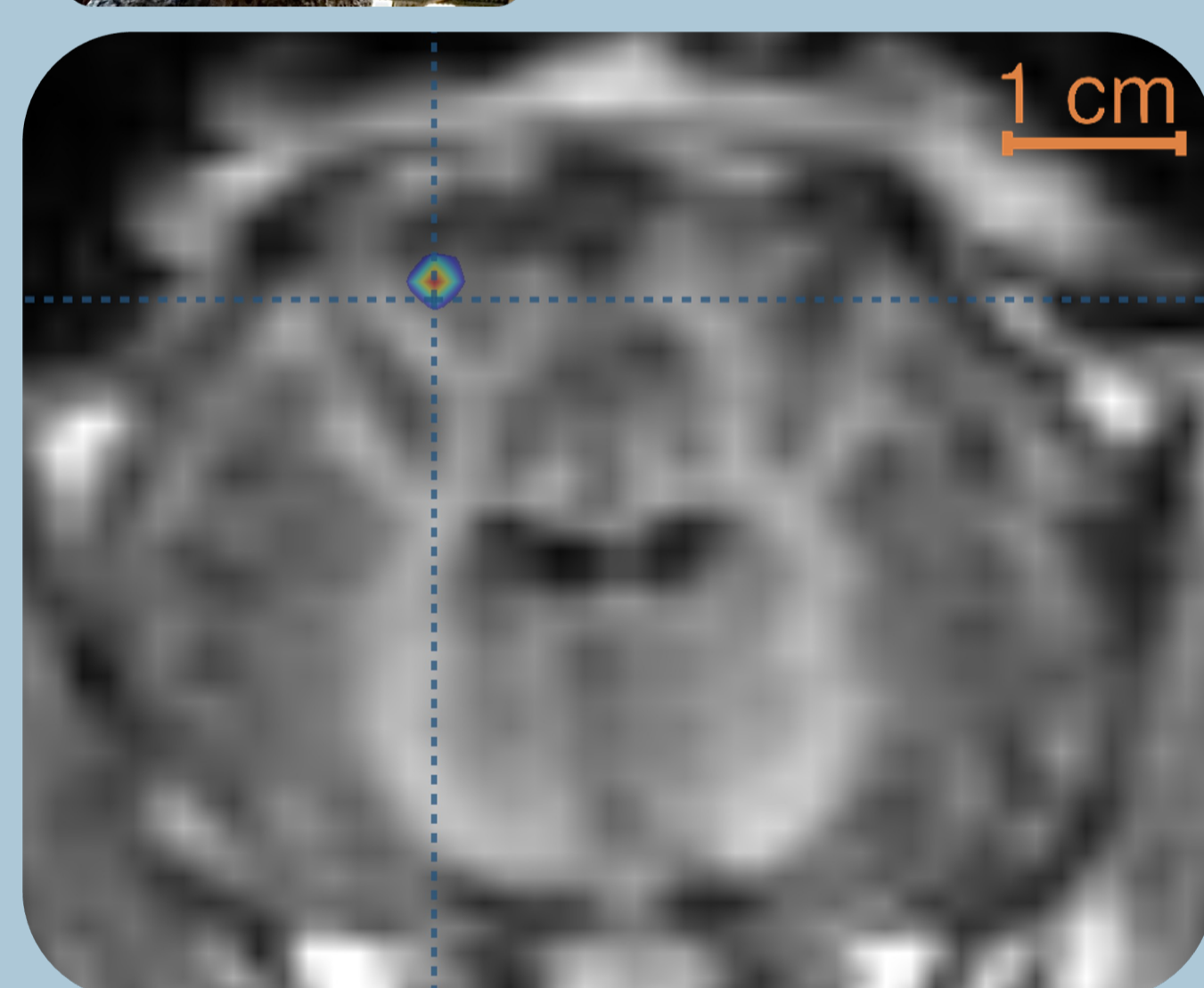
Training Progress. The different steps performed in the MRI room for each sheep
♀ : Robin, Brook, Maggie, Lily, Barnita ; ♂ : Ted, Léonard, Tony, Joe, Jackson

	Robin	Brook	Maggie	Ted	Léonard	Tony	Lily
LOCA (~30 sec)	✓	✓	✓	✓	✓	✓	✓
Run 1 (4 min 04)	✓	✓	✓	✓	✓	✓	✓
Fieldmap (1 min 57)	✓	✓	✓	✓	✓	✓	✓
T1 (2 min 36)	✓	✓	✓	✓	✓	✓	✓
Run 2 (4 min 04)	✓	✓	✓	✓	✓	✓	✓

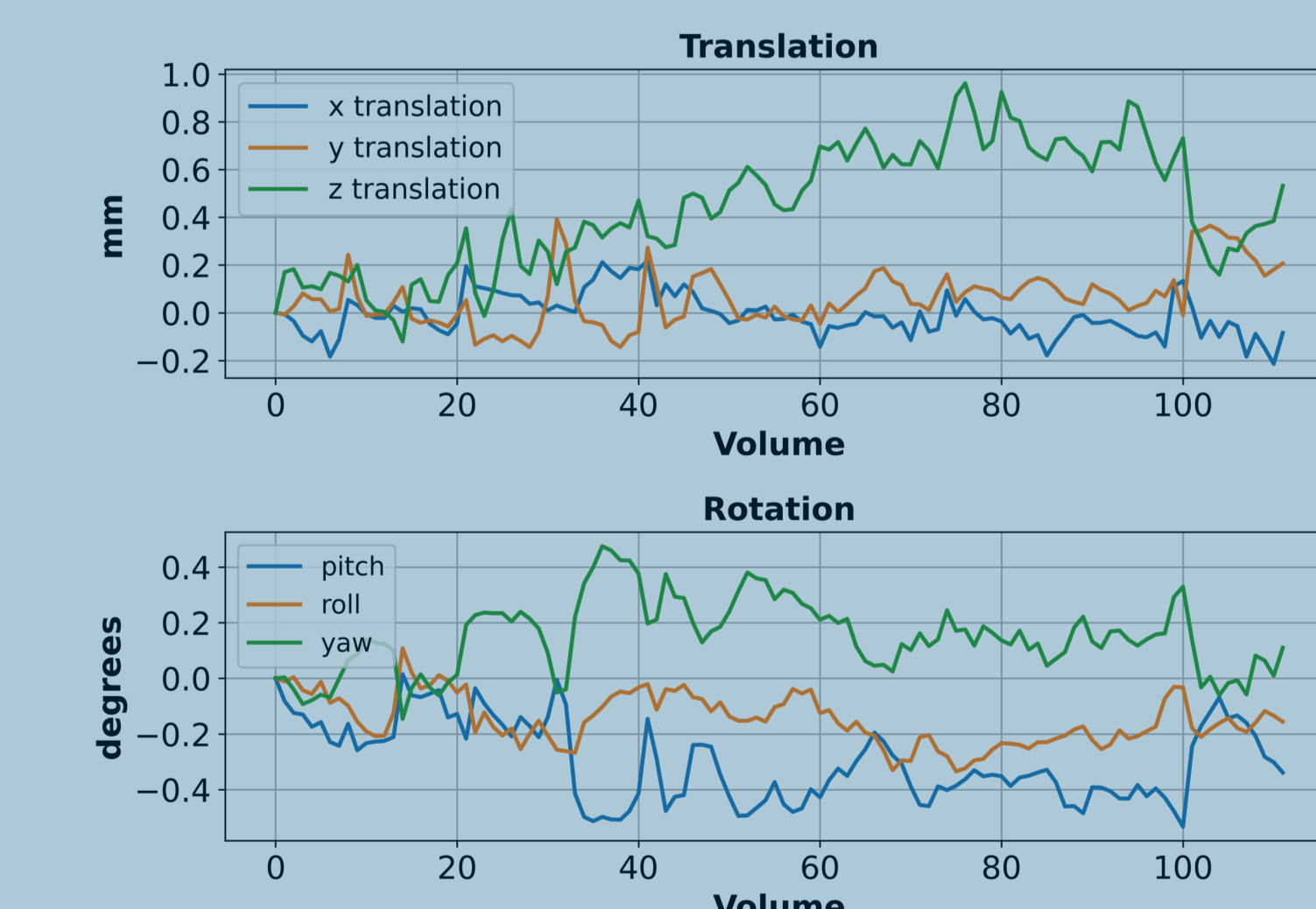
Progress in MRI data collection during a single session



LÉONARD



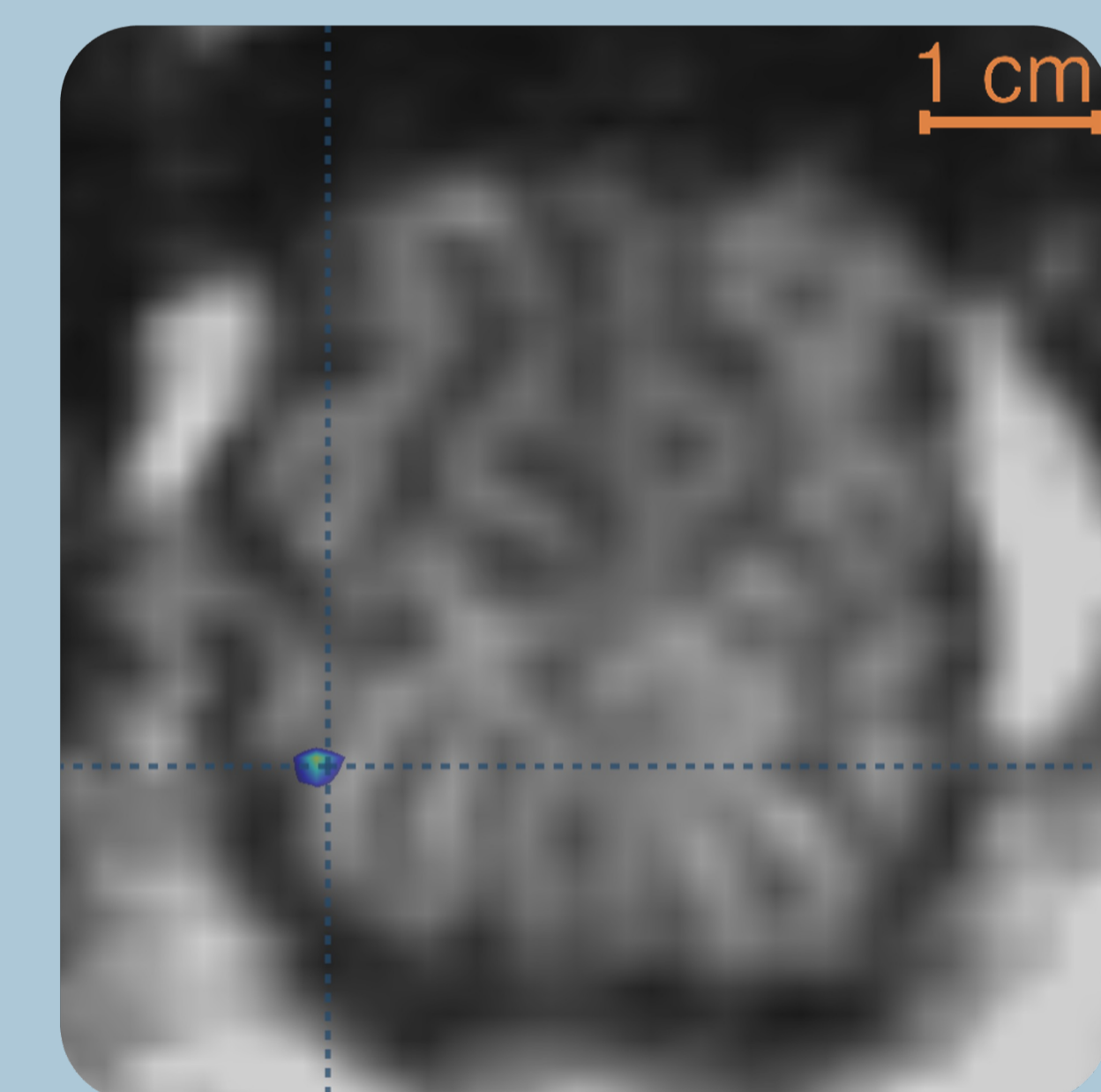
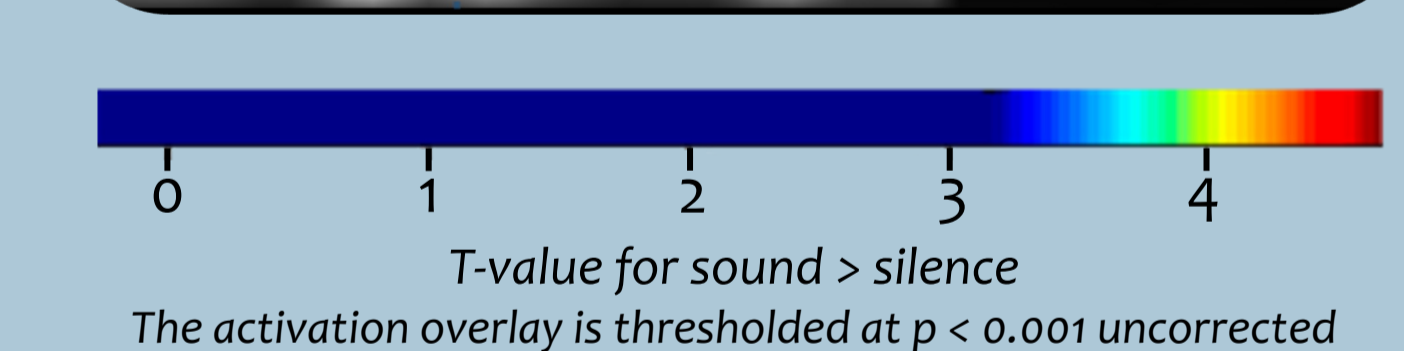
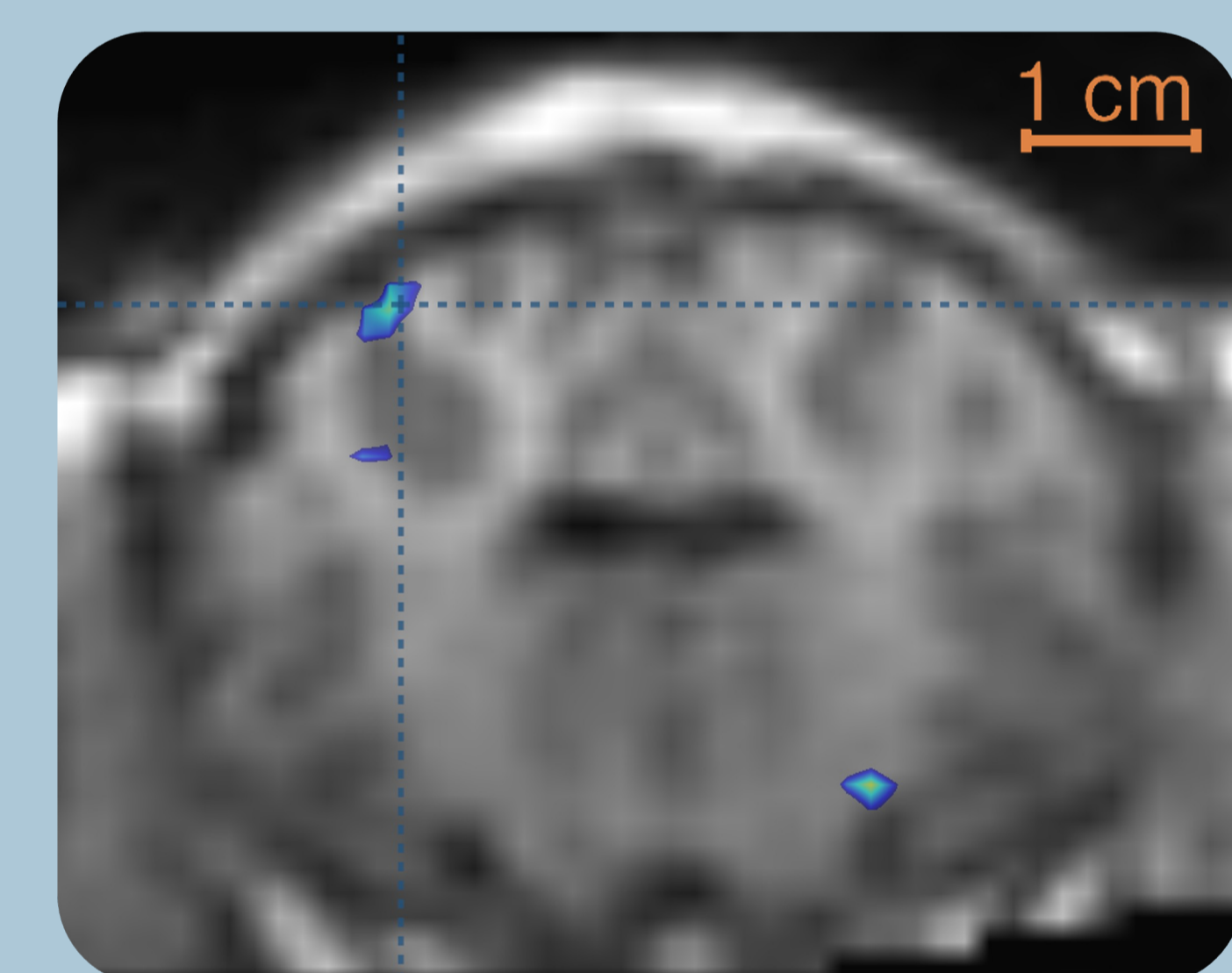
Axial slice



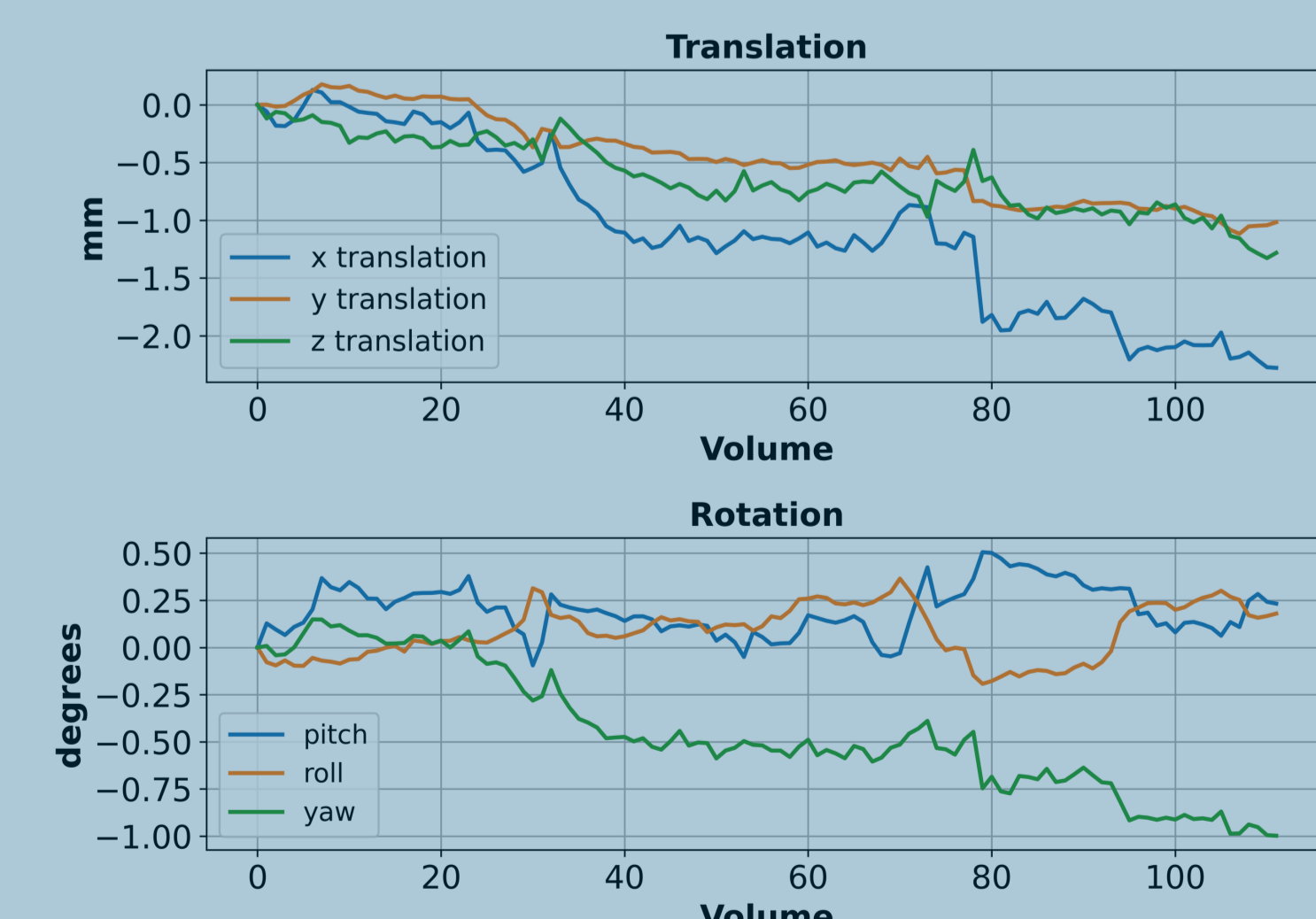
Motion parameters representing the amount of motion in each of the six directions for each volume acquired.



BROOK



Axial slice



Motion parameters representing the amount of motion in each of the six directions for each volume acquired.