



**HAL**  
open science

## Localizing the sheep auditory cortex using functional magnetic resonance imaging

Camille Pluchot, Hans Adriaensen, Céline Parias, Cécile Arnould, Didier Dubreuil, Olivier Lasserre, Karine Larose, Frédéric Elleboudt, Jean-Noël Couet, Elodie Chaillou, et al.

### ► To cite this version:

Camille Pluchot, Hans Adriaensen, Céline Parias, Cécile Arnould, Didier Dubreuil, et al.. Localizing the sheep auditory cortex using functional magnetic resonance imaging: The sheep auditory cortex is located in the anterior part of the posterior ectosylvian gyrus. Sheep voluntarily participate in awake and unrestrained fMRI sessions.. Organization for Human Brain Mapping, Jul 2023, Montréal, France. hal-04190964

**HAL Id: hal-04190964**

**<https://hal.science/hal-04190964>**

Submitted on 30 Aug 2023

**HAL** is a multi-disciplinary open access archive for the deposit and dissemination of scientific research documents, whether they are published or not. The documents may come from teaching and research institutions in France or abroad, or from public or private research centers.

L'archive ouverte pluridisciplinaire **HAL**, est destinée au dépôt et à la diffusion de documents scientifiques de niveau recherche, publiés ou non, émanant des établissements d'enseignement et de recherche français ou étrangers, des laboratoires publics ou privés.

# The sheep auditory cortex is located in the anterior part of the posterior ectosylvian gyrus.

## Sheep voluntarily participate in awake and unrestrained fMRI sessions.

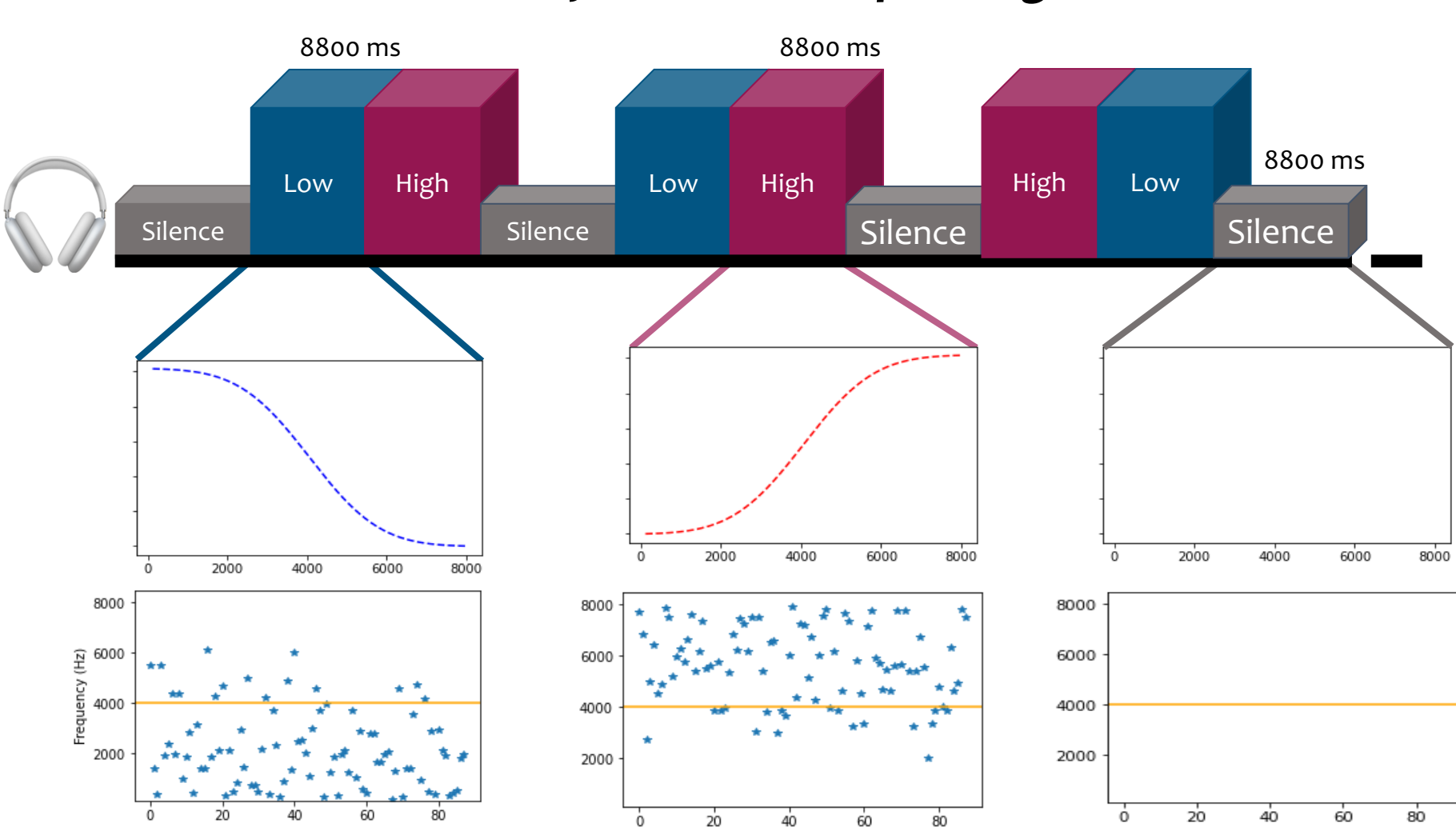


### Introduction

The precise 3D location of the sheep auditory cortex is unknown. A single neuronal tracer study highlighted that a small region of the rostral most part of the posterior ectosylvian gyrus may constitute the sheep auditory cortex (Michaloudi et al., 1986). This region received fibers from the ventral medial geniculate nucleus, which is believed to be exclusively auditory. Clearly, more evidence is required to accurately localize and understand the anatomical and functional properties of the sheep auditory cortex. To precisely map its 3D location, we use fMRI to acquire functional brain images from a group of anesthetized sheep. However, anesthesia can be detrimental to health, disrupt neurovascular coupling (Aksenov et al., 2015) and does not permit the study of higher-level cognition. Thus we also present a proof of concept that positive reinforcement training in sheep is sufficient to be able to acquire MRI of their brain.

### Method

#### Auditory stimulation paradigm



### 1- Awake & unrestrained sheep

#### 1. Step-by-step training protocol with 10 lambs (5♂ - 5♀)

→ Lying motionless on the MRI table for the minimum time required for an acquisition (~10 min)

- **Sheepfold training phase** (mock MRI table and coil, scanner noise desensitization)
- **MRI room training phase** (table movements, scanner bore, MRI coil, headphones)

#### 2. MRI sequences

**T1-weighted structural scan:** TR = 2200 ms, TE = 2.64 ms, flip angle = 12°, voxel size = 1.12 mm<sup>3</sup>, TA = 2 min 36 sec

**Gradient echo fieldmap:** TR = 500 ms, TE = 4.92/7.38 ms, flip angle = 55°, voxel size = 1.5 x 1.5 x 2 mm, TA = 1 min 57 sec

**EPI functional images:** multiband acceleration factor = 2, TR = 2000 ms, TE = 40 ms, flip angle = 12°, number of slices = 40, voxel size = 1.51 mm<sup>3</sup>, number of volumes = 112, TA = 4 min 04 sec

### 2- Anesthetized sheep

#### 1. Participants (2♂ - 2♀)

#### 2. MRI sequences

**T1-weighted structural scan:** TR = 2200 ms, TE = 2.99 ms, flip angle = 12°, voxel size = 0.6 mm<sup>3</sup>, TA = 2 min 36 sec

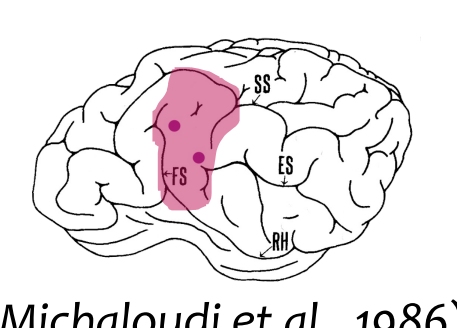
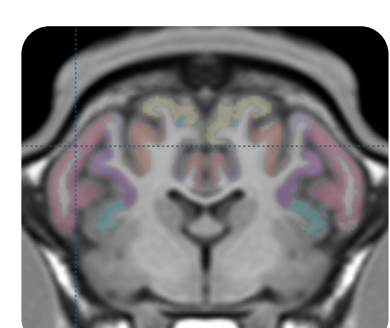
**Gradient echo fieldmap:** TR = 500 ms, TE = 4.92/7.38 ms, flip angle = 55°, voxel size = 1.5 x 1.5 x 2 mm, TA = 1 min 57 sec

**EPI functional images:** multiband acceleration factor = 2, TR = 1564 ms, TE = 35 ms, flip angle = 80°, number of slices = 40, voxel size = 1.51 mm<sup>3</sup>, number of volumes = 846, TA = 22 min 19 sec

### Discussion

❖ Except for one run in an anesthetized sheep, no brain activation in response to auditory stimuli was found.

❖ The preliminary awake sheep fMRI results localize the auditory cortex similarly to the putative region proposed by Michaloudi and colleagues.



(Michaloudi et al., 1986)

### LOCALIZING THE SHEEP AUDITORY CORTEX USING FUNCTIONAL MAGNETIC RESONANCE IMAGING

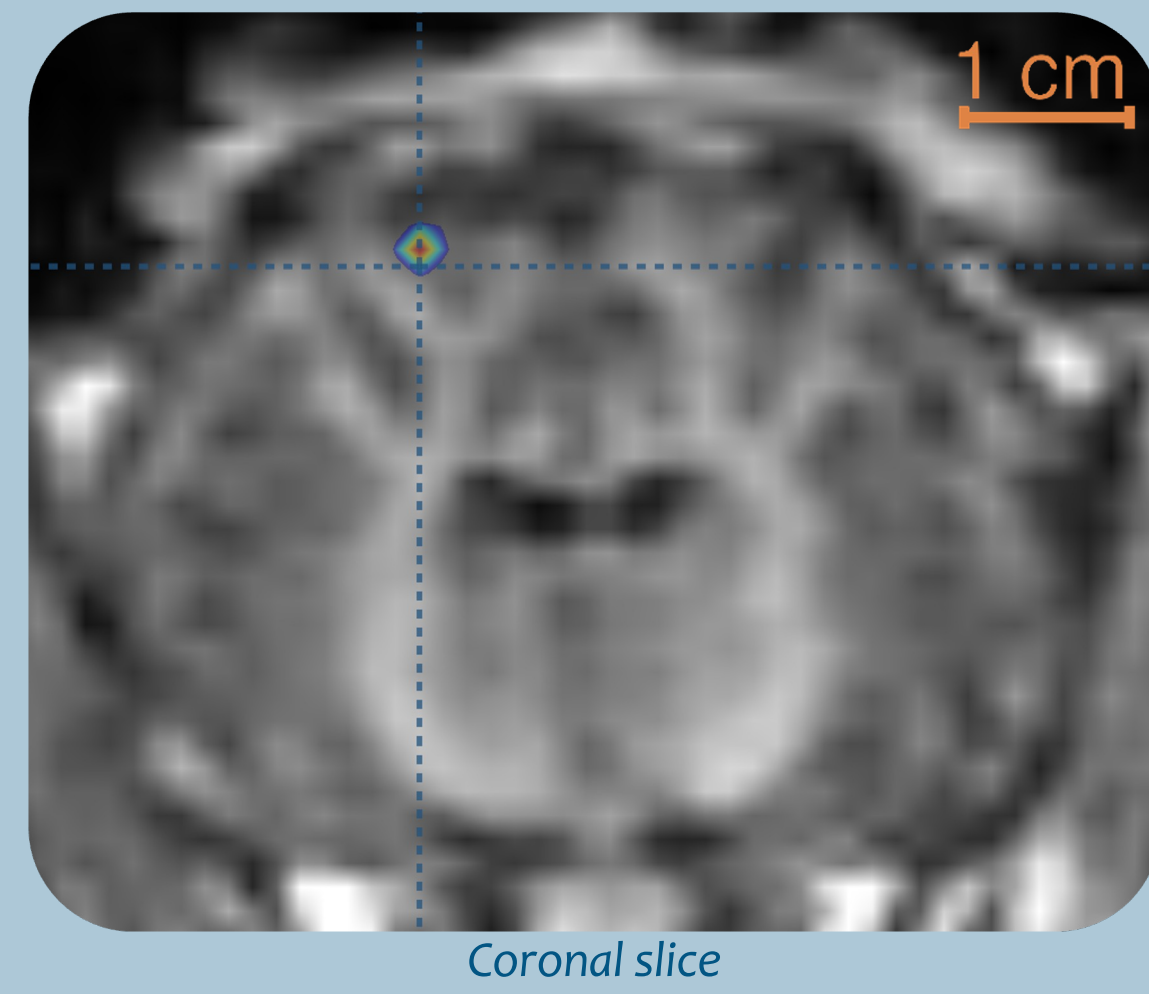
C. Pluchot<sup>1</sup>, H. Adriaensen<sup>1</sup>, C. Parias<sup>1</sup>, C. Arnould<sup>1</sup>, D. Dubreuil<sup>2</sup>, O. Lasserre<sup>2</sup>, K. Larose<sup>2</sup>, F. Elleboudt<sup>1</sup>, J.-N. Couet<sup>1</sup>, E. Chaillou<sup>1</sup>, S. Love<sup>1</sup>

<sup>1</sup>CNRS, IFCE, INRAE, Université de Tours, PRC, Nouzilly, France ; <sup>2</sup>INRAE, UEPAO 1297, Nouzilly, France

### 1- Awake & unrestrained sheep



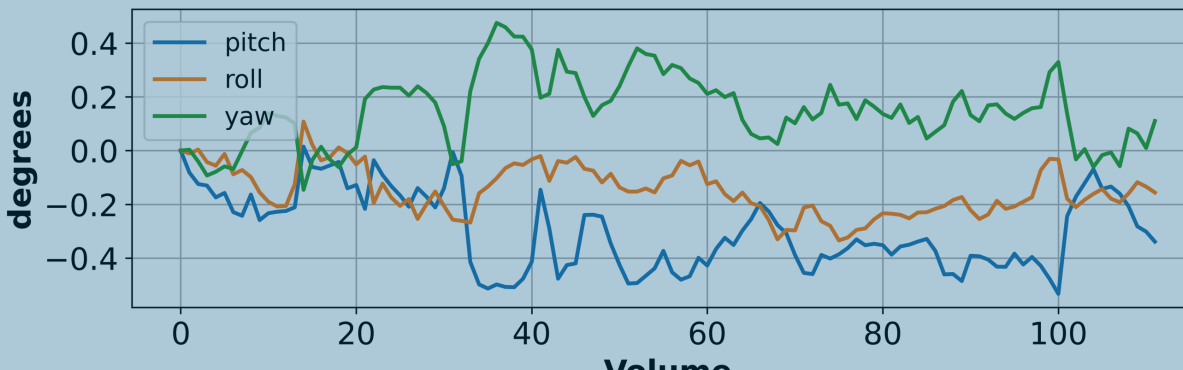
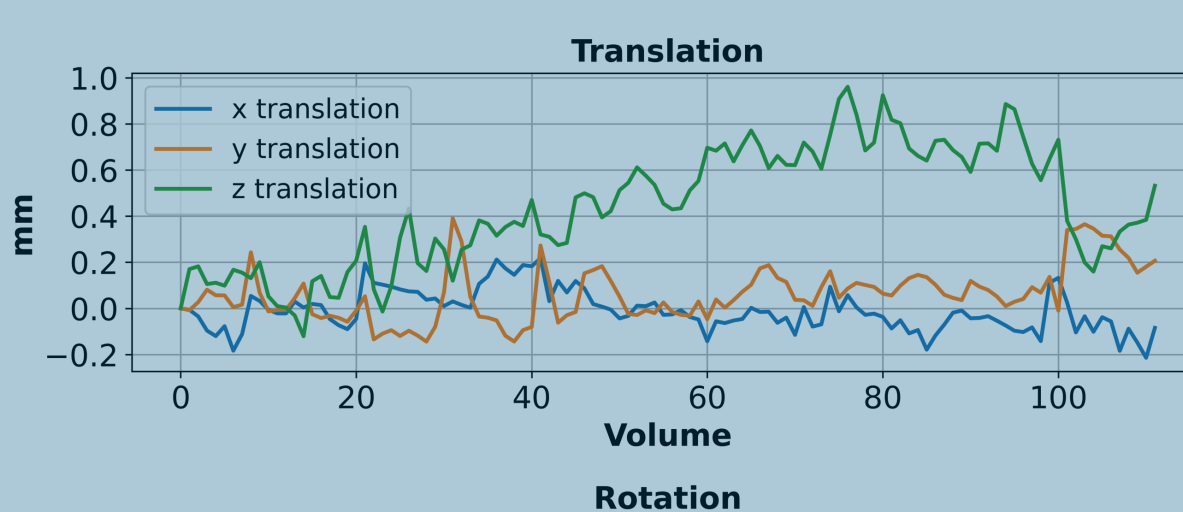
LÉONARD



Superior  
Left Right  
Inferior

1 cm

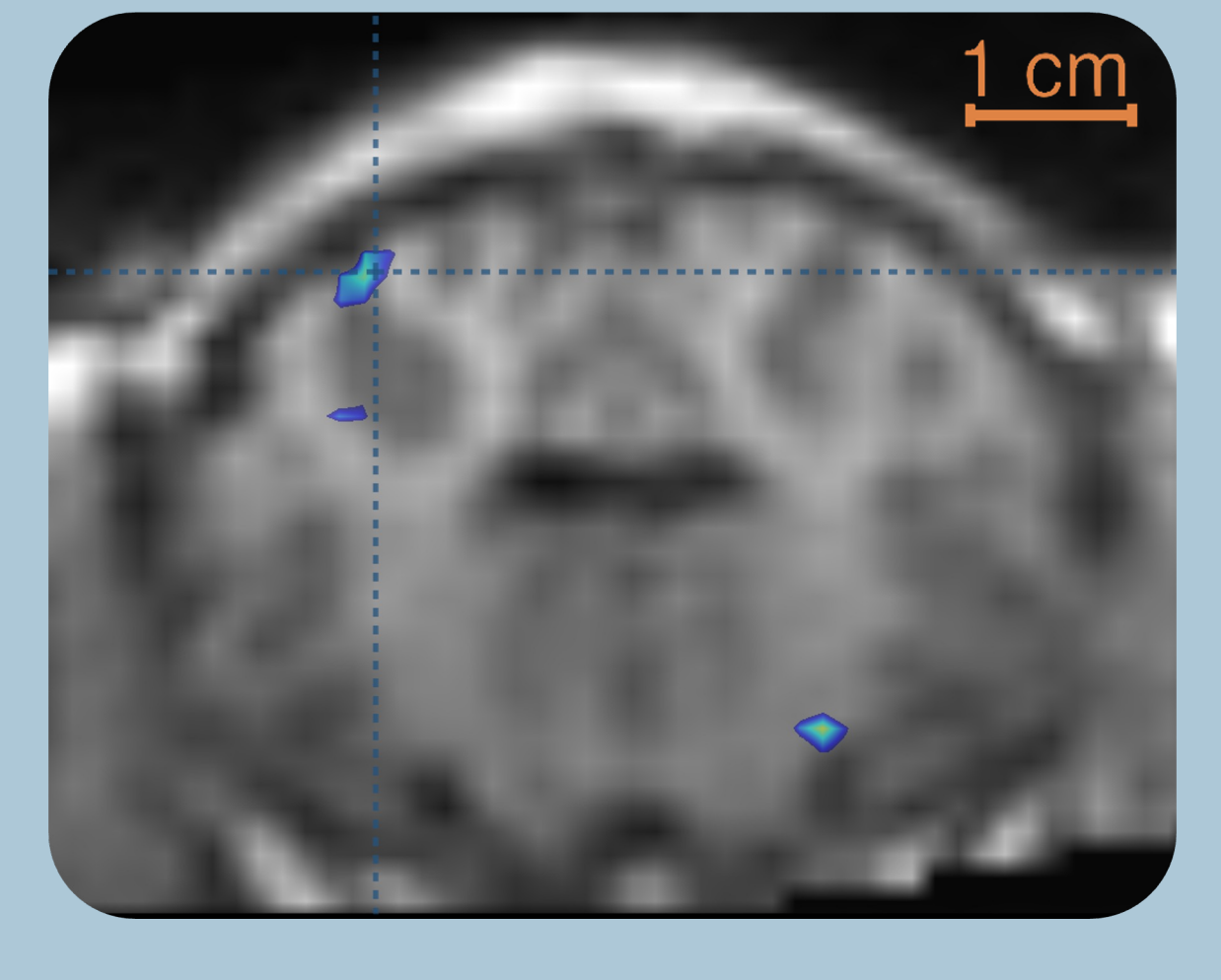
T-value for sound > silence  
The activation overlay is thresholded at  $p < 0.001$  uncorrected



Motion parameters representing the amount of motion in each of the six directions for each volume acquired.

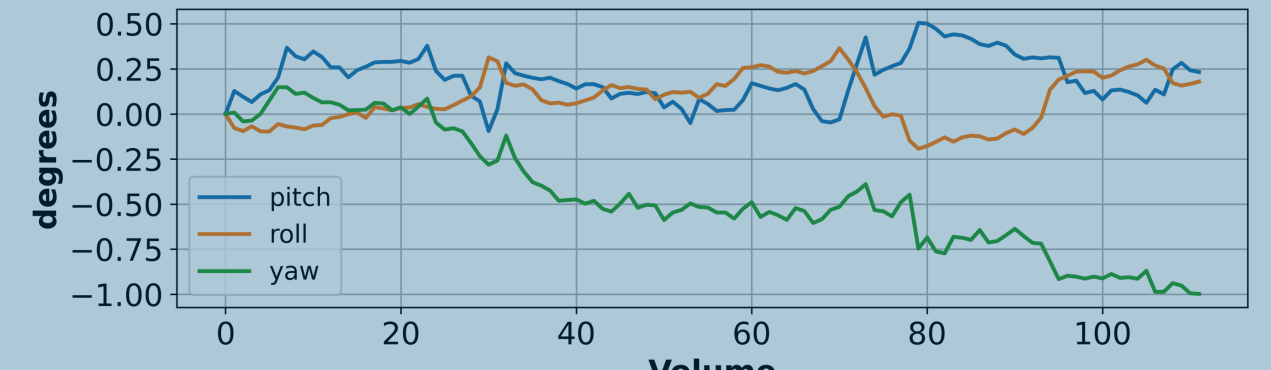
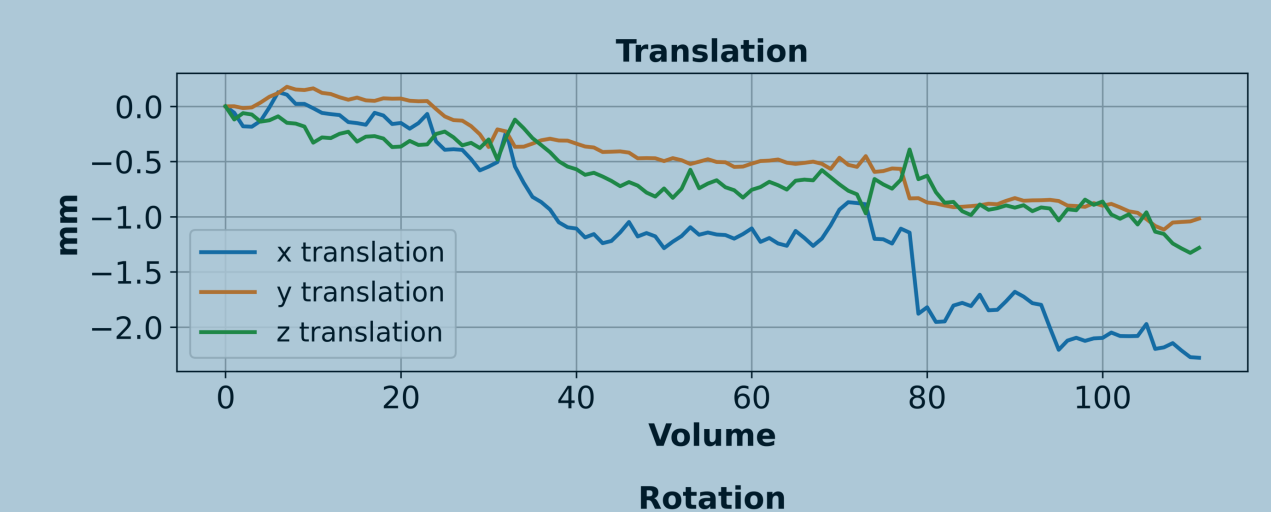


BROOK

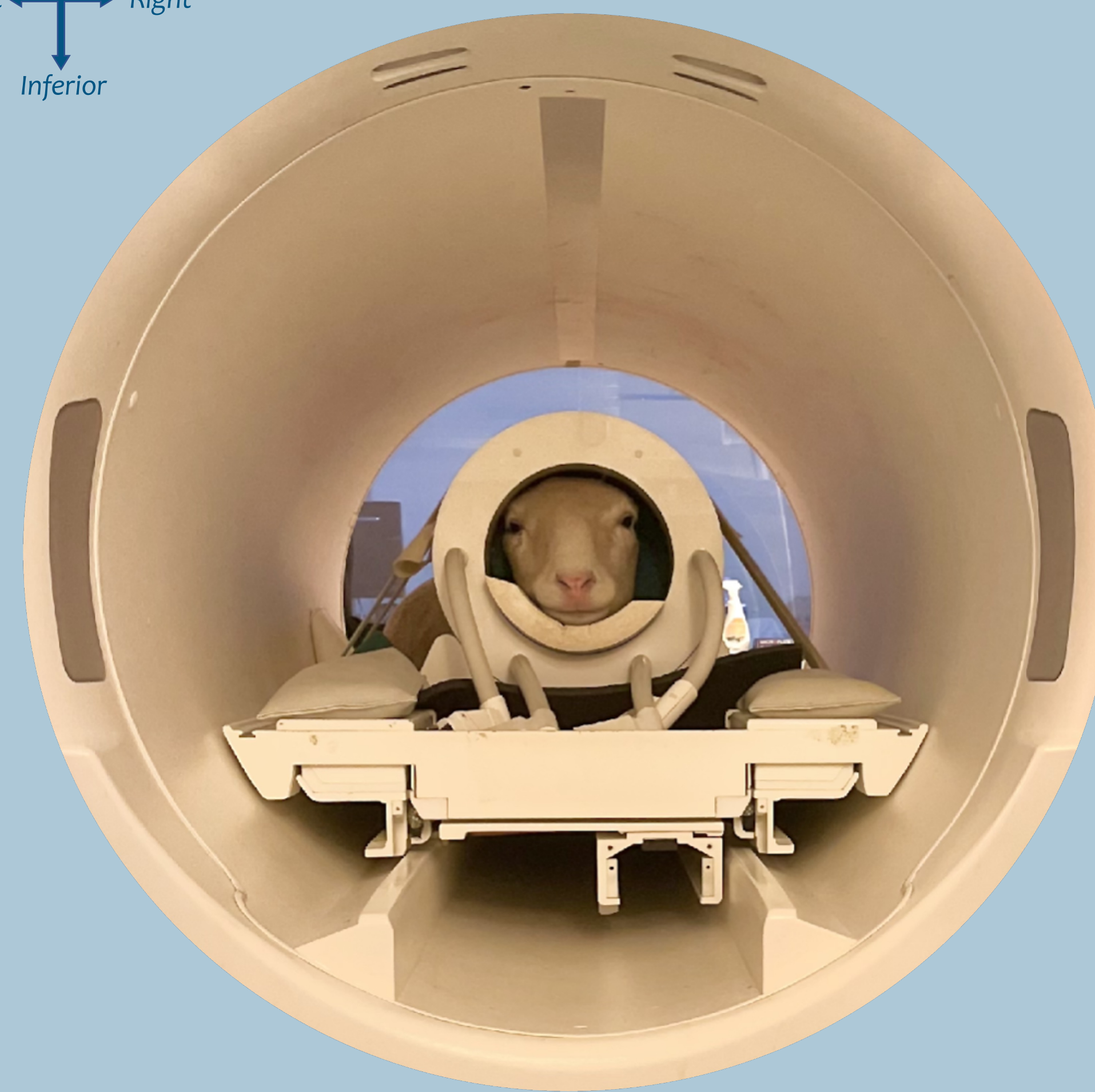


1 cm

T-value for sound > silence  
The activation overlay is thresholded at  $p < 0.001$  uncorrected



Motion parameters representing the amount of motion in each of the six directions for each volume acquired.



#### LAMB'S BIRTH

March 2022



#### GROUP SELECTION

- ❖ Male and female lamb's under artificial feeding
- ❖ Positive interactions with the lambs twice a day, 7 days a week
- ❖ New objects / Exercises [foam, ramp]

March 2022



#### SHEEPFOLD TRAINING PHASE

- ❖ Climb a ramp to reach the mock MRI
- ❖ Put their head inside the mock MRI coil
- ❖ Lie still on a moving table

March 2022 to September 2022



#### MRI ROOM TRAINING PHASE

- ❖ Accept headphones on their ears
- ❖ Put their head inside the real MRI coil
- ❖ Lie still on the moving table
- ❖ Stay motionless inside the scanner bore

September 2022 to now

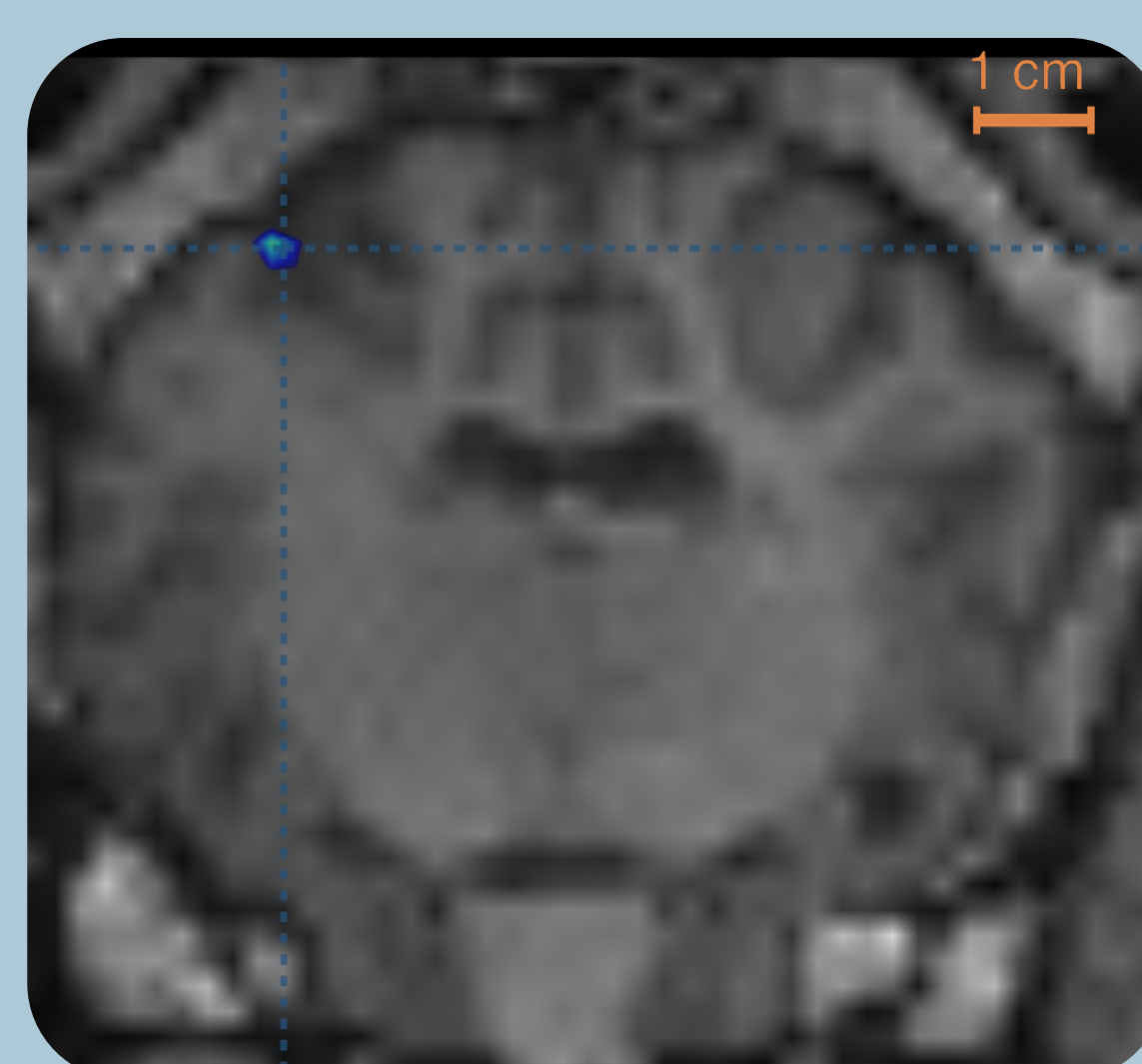
	Robin	Brook	Maggie	Ted	Léonard	Tony	Lily	Joe	Jackson	Barnita
Lie down on the table	✓	✓	✓	✓	✓	✓	✓	✓	✓	✓
Wear headphones	✓	✓	✓	✓	✓	✓	✓	✓	✓	✓
Head inside the coil	✓	✓	✓	✓	✓	✓	✓	✓	✓	✓
Scanner bore	✓	✓	✓	✓	✓	✓	✓	✓	✓	✓
Stay motionless (~10 min)	✓	✓	✓	✓	✓	✓	✓	✓	✓	✓

Training Progress. The different steps performed in the MRI room for each sheep  
 ♀ : Robin, Brook, Maggie, Lily, Barnita ; ♂ : Ted, Léonard, Tony, Joe, Jackson

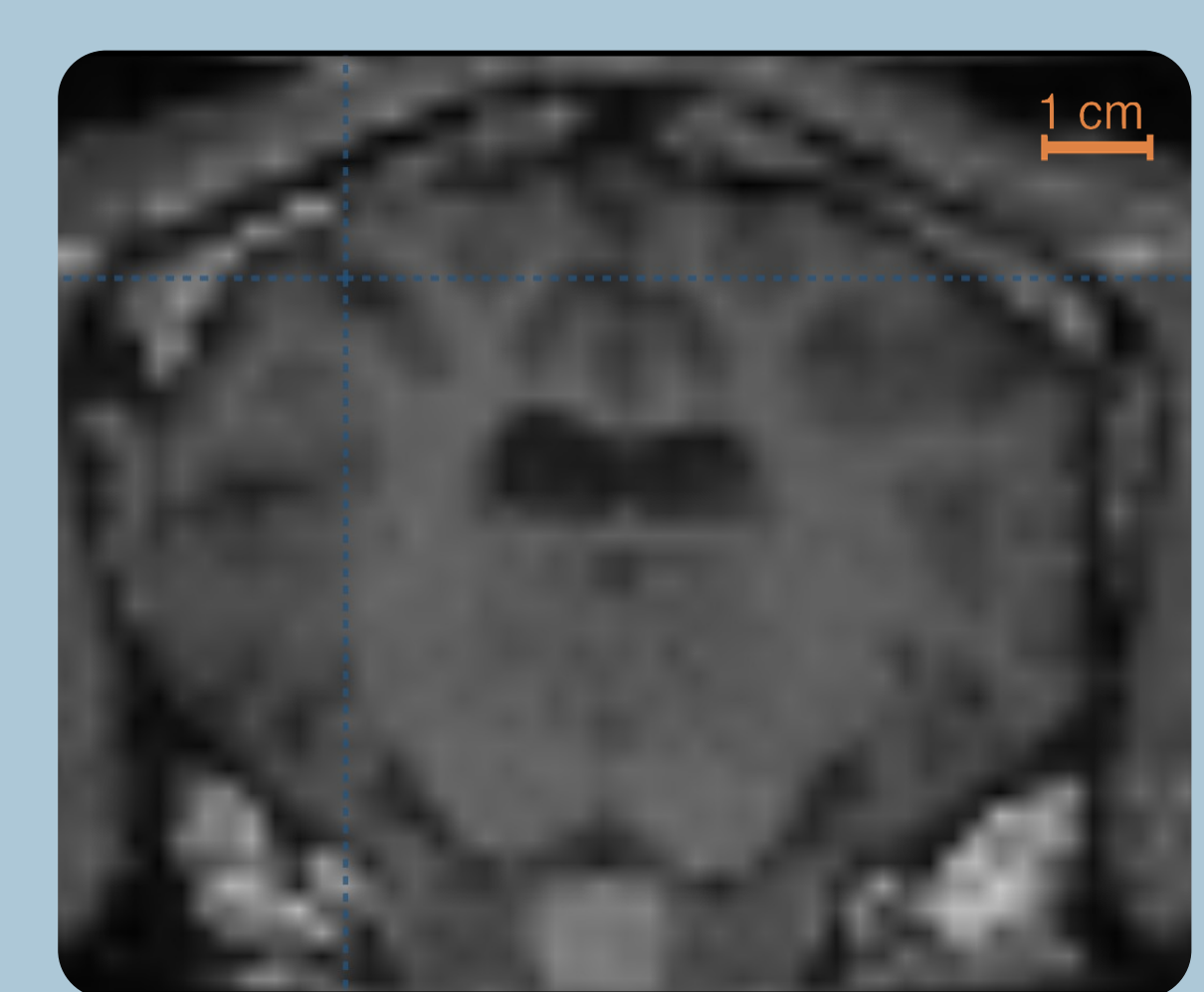
	Robin	Brook	Maggie	Ted	Léonard	Tony	Lily
LOCA (~30 sec)	✓	✓	✓	✓	✓	✓	✓
Run 1 (4 min 04)	✓	✓	✓	✓	✓	✓	✓
Fieldmap (1 min 57)	✓	✓	✓	✓	✓	✓	✓
T1 (2 min 36)	✓	✓	✓	✓	✓	✓	✓
Run 2 (4 min 04)	✓	✓	✓	✓	✓	✓	✓

Progress in MRI data collection during a single session

### 2- Anesthetized sheep



T-value for sound > silence  
The activation overlay is thresholded at  $p < 0.001$  uncorrected



Superior  
Left Right  
Inferior

### Acknowledgements

We would like to thank UE-PAO; Platform PIXANIM and PRC workshop for their invaluable help. This project is funded by the ANR (SheepVoicefMRI : ANR-20-CE20-0001-01) and INRAE Département PHASE

