



**HAL**  
open science

## Semi-empirical modeling of low-dimensional metal-halide perovskites

Simon Thébaud, Tan Nguyen, Claudine Katan, Jacky Even

► **To cite this version:**

Simon Thébaud, Tan Nguyen, Claudine Katan, Jacky Even. Semi-empirical modeling of low-dimensional metal-halide perovskites. International Summer School on Extreme Nonlinear Optics in Solids, Aug 2023, Cork, Ireland. . hal-04190543

**HAL Id: hal-04190543**

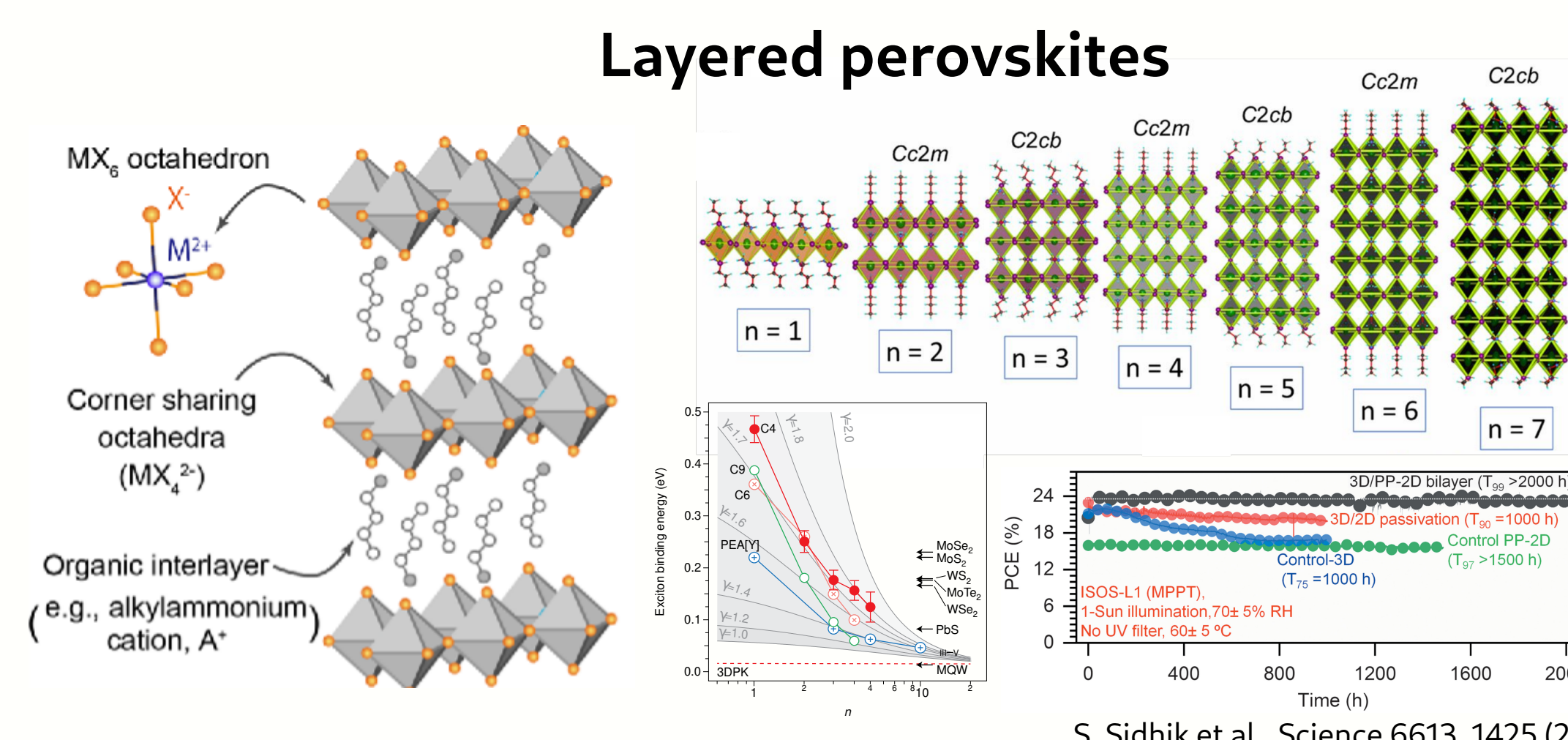
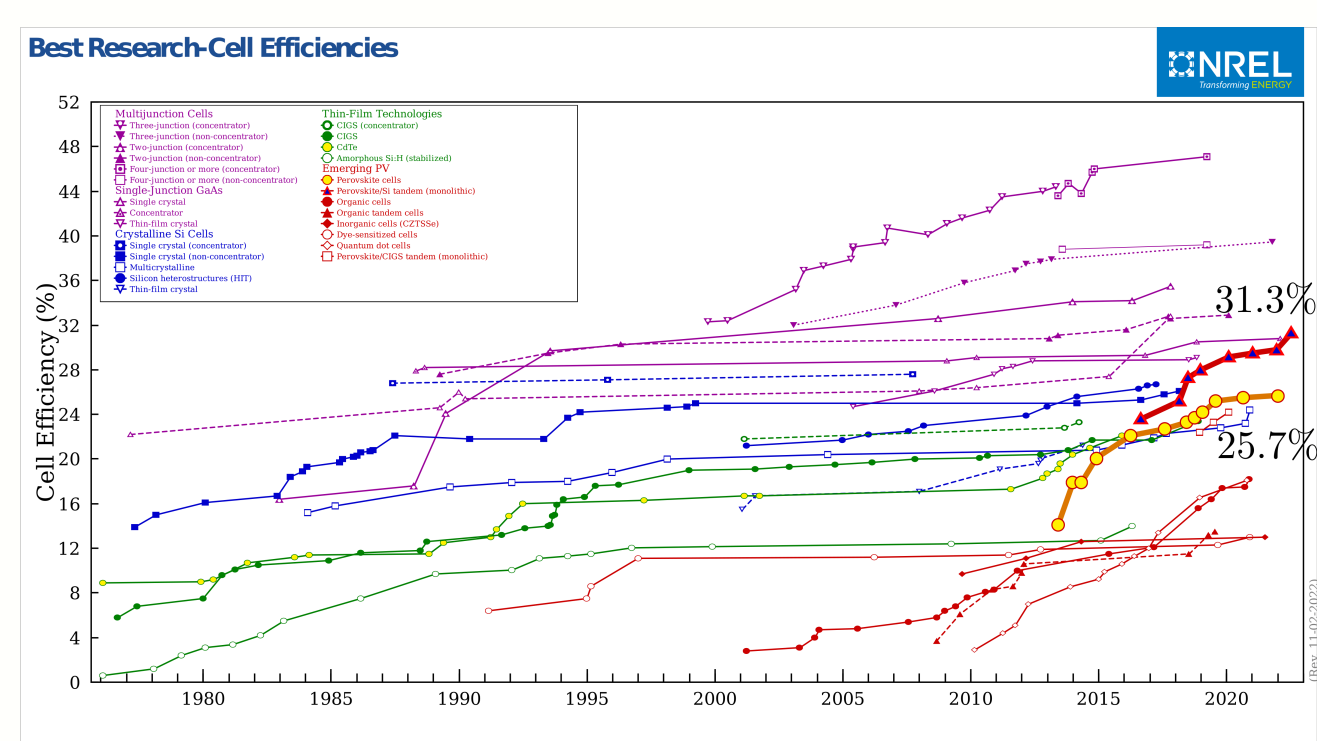
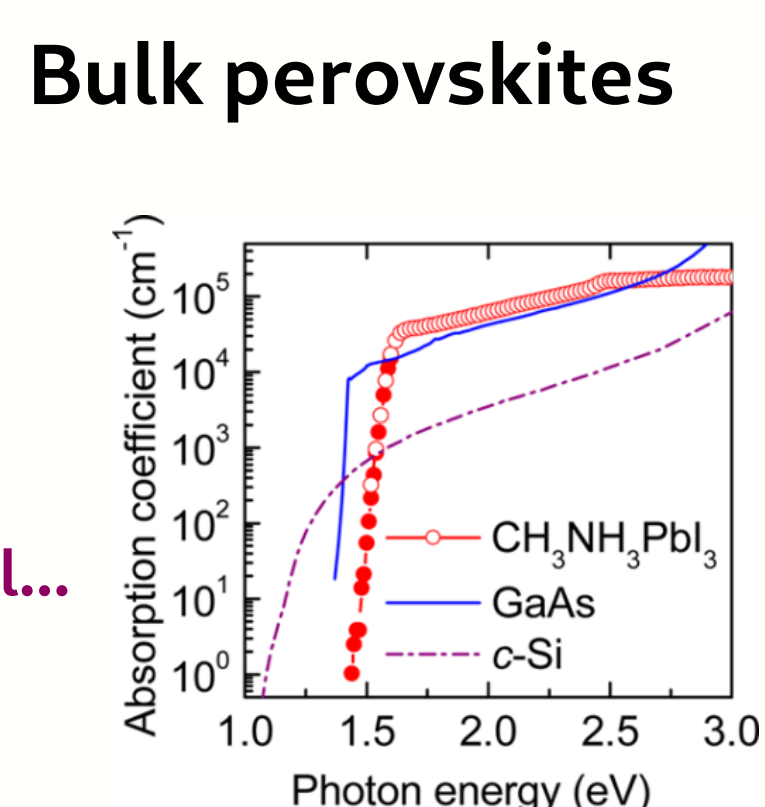
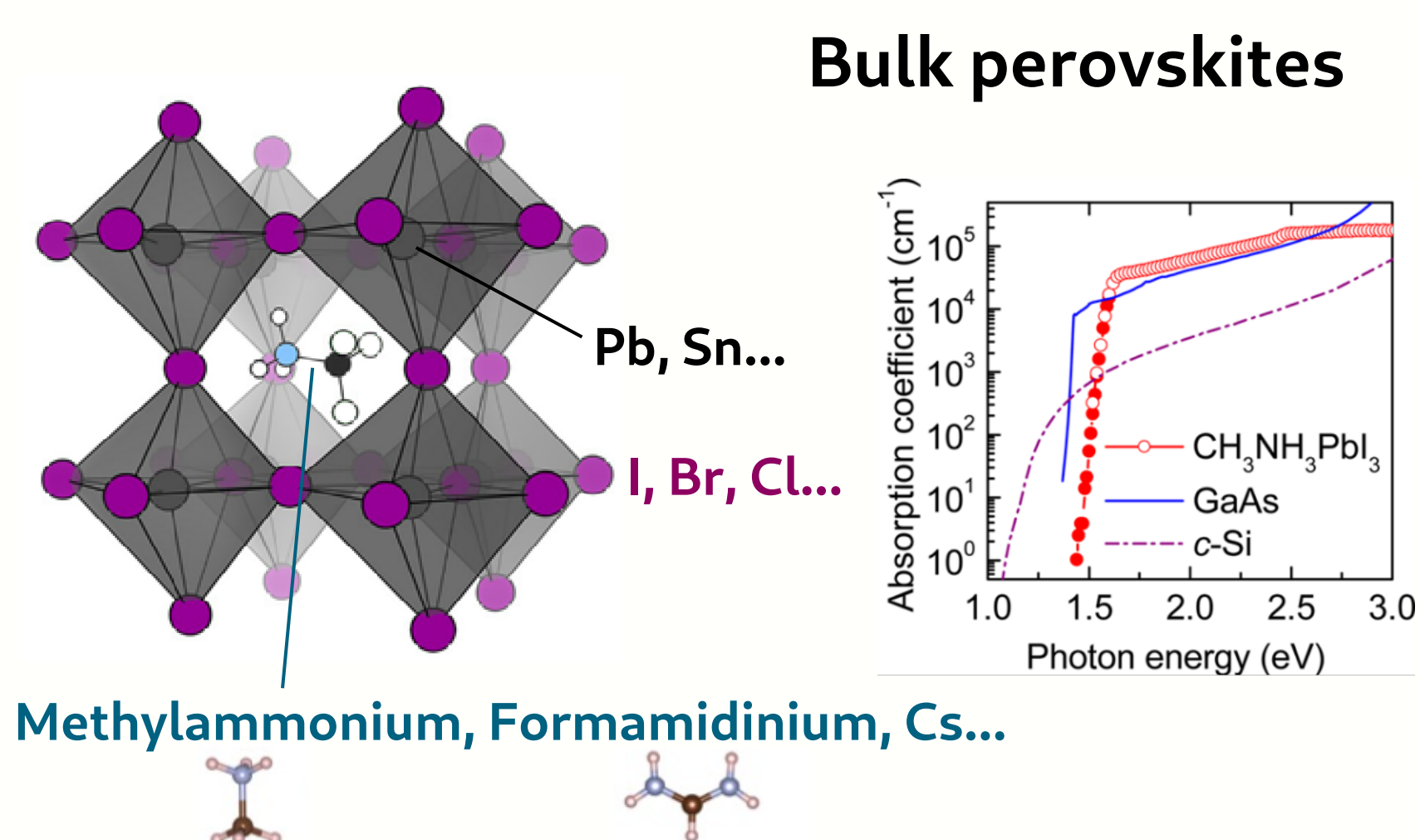
**<https://hal.science/hal-04190543>**

Submitted on 29 Aug 2023

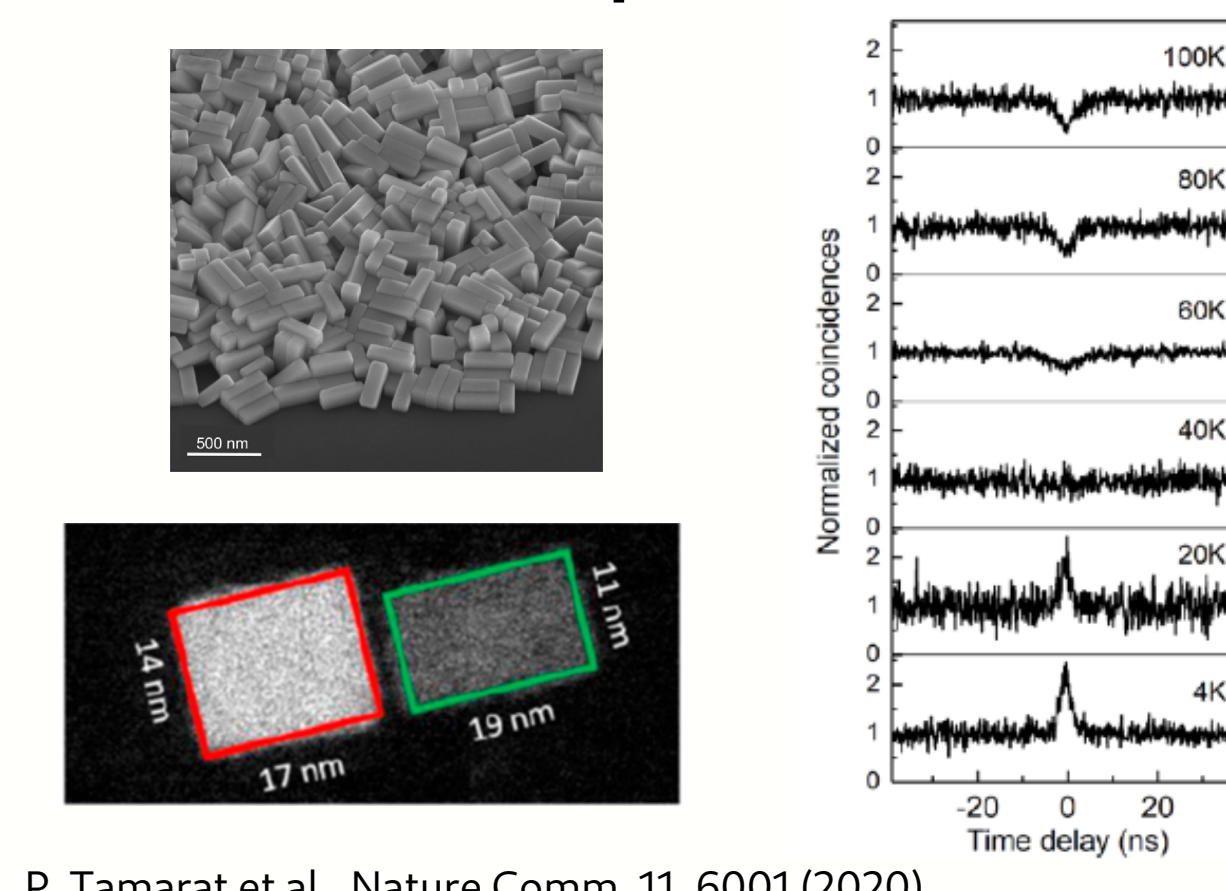
**HAL** is a multi-disciplinary open access archive for the deposit and dissemination of scientific research documents, whether they are published or not. The documents may come from teaching and research institutions in France or abroad, or from public or private research centers.

L'archive ouverte pluridisciplinaire **HAL**, est destinée au dépôt et à la diffusion de documents scientifiques de niveau recherche, publiés ou non, émanant des établissements d'enseignement et de recherche français ou étrangers, des laboratoires publics ou privés.

## Metal-halide perovskites as optoelectronic materials



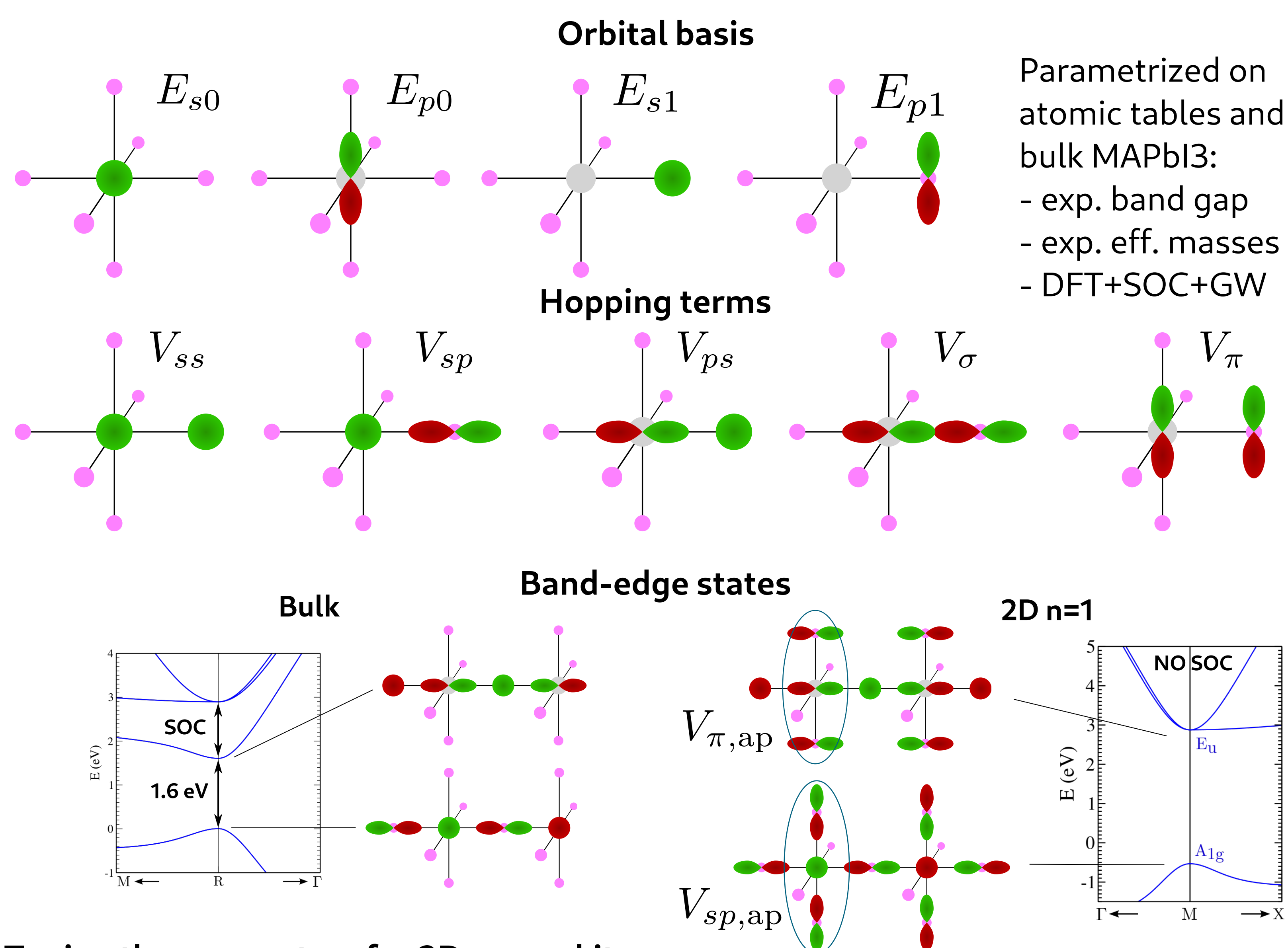
**Perovskite quantum dots**



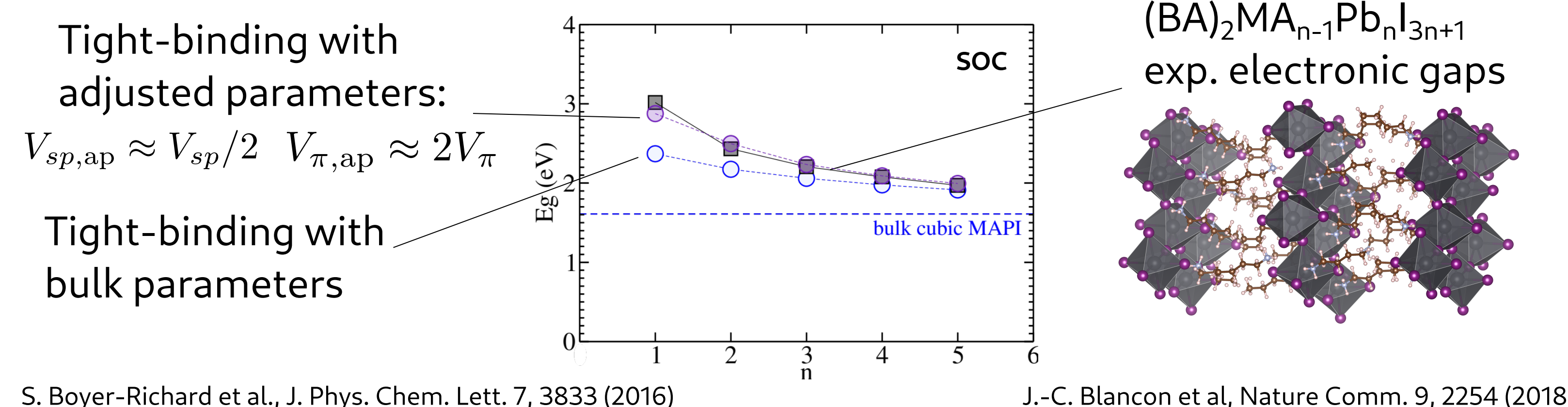
S. Sidhik et al., Science 6613, 1425 (2022)

P. Tamarat et al., Nature Comm. 11, 6001 (2020)

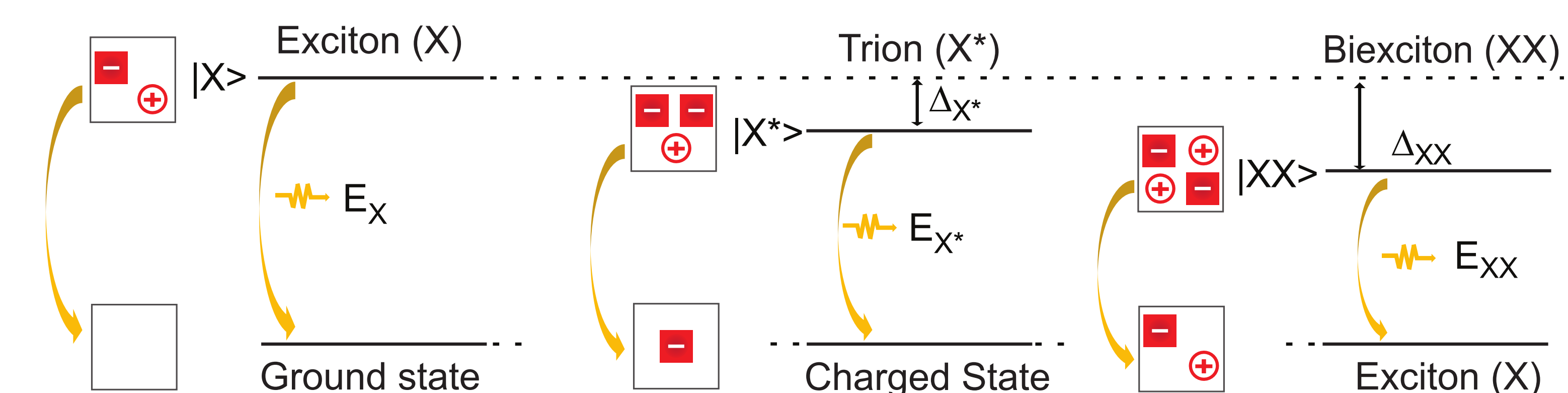
## Tight-binding modeling of perovskites



**Tuning the parameters for 2D perovskites**



## Multiexcitons in perovskite quantum dots



**Configuration interaction**

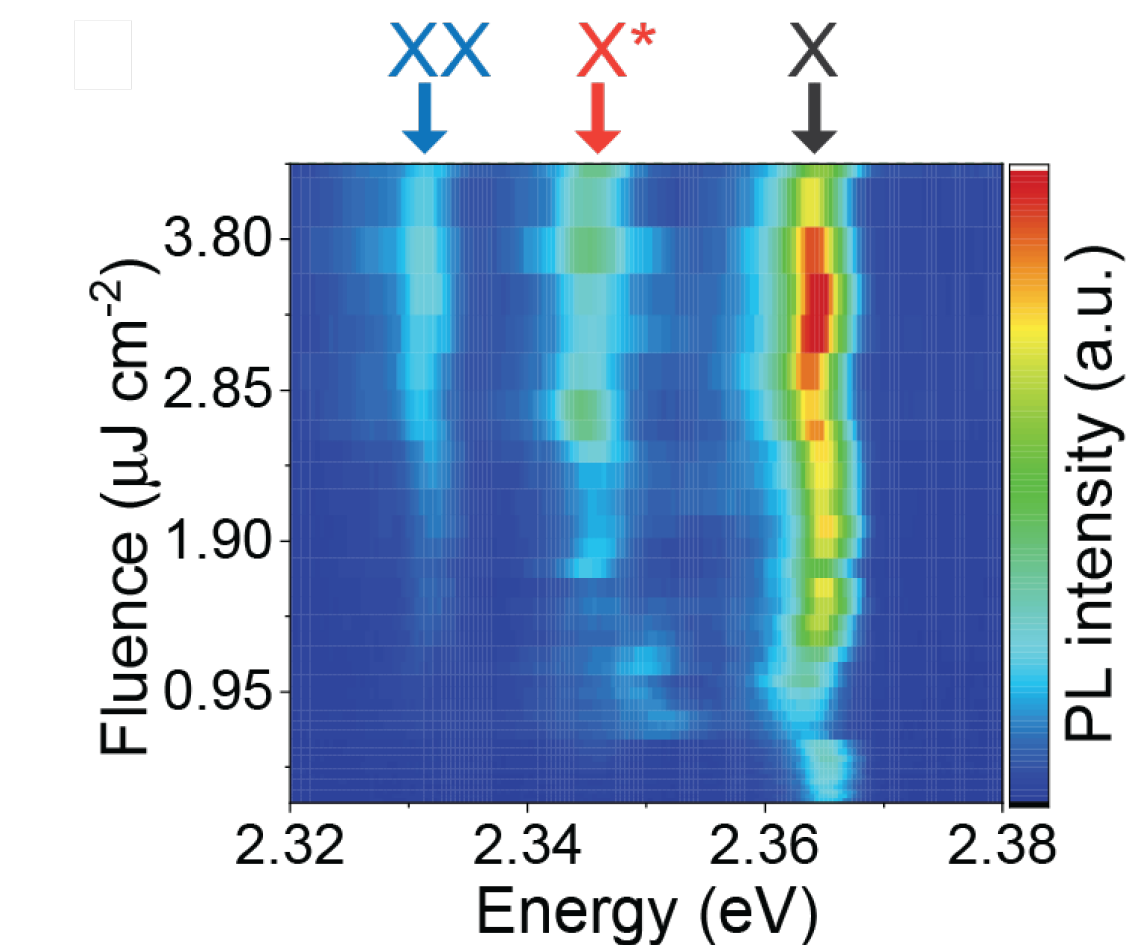
$$\sum_{eh} (H_{eff})_{e'h',eh} A_{eh}^{\alpha} = \omega_{\alpha} A_{e'h'}^{\alpha}$$

Effective mass model:

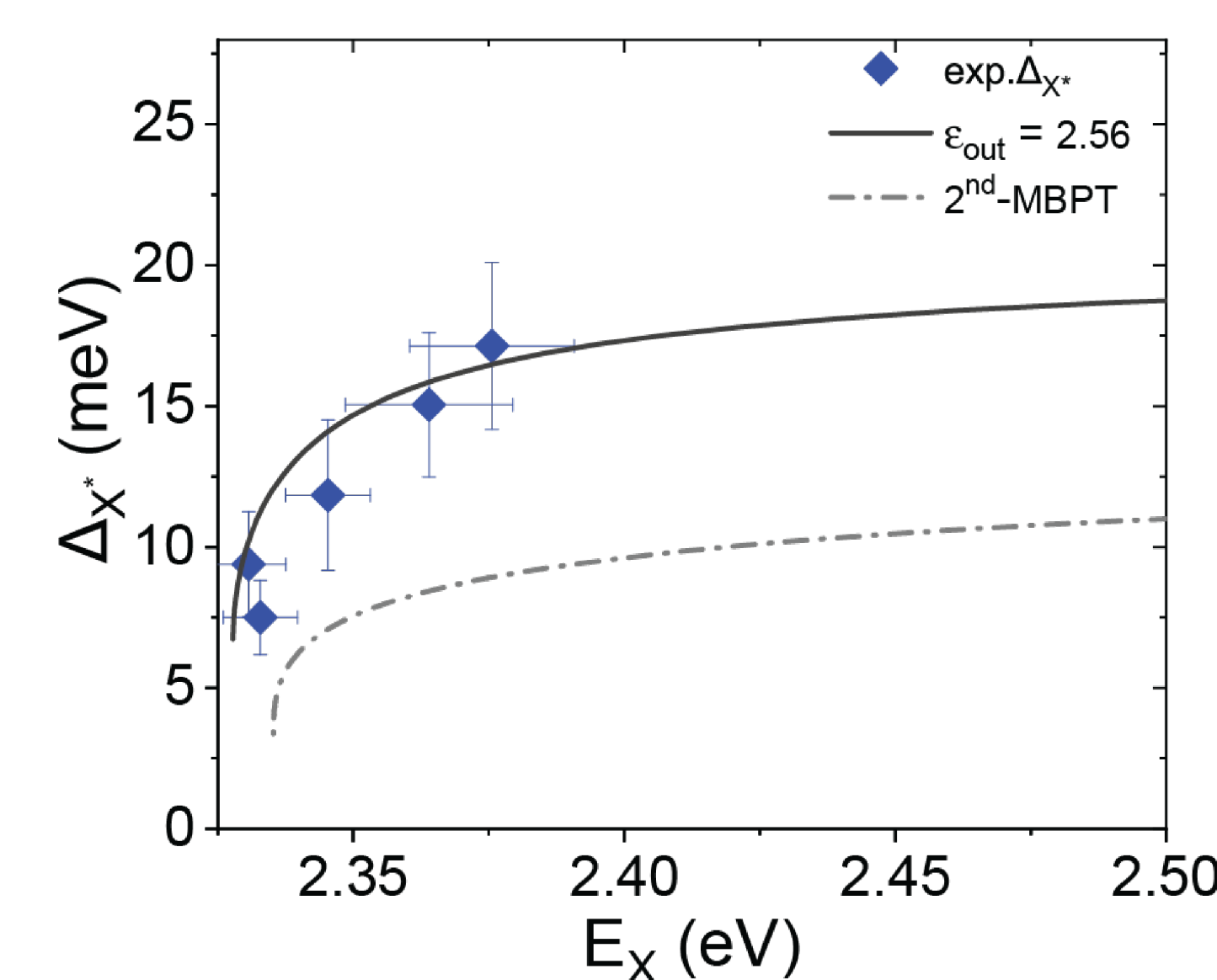
$$(E_e^0 + E_h^0) \delta_{e',e} \delta_{h',h} + V_{e'h',eh}$$

Exciton state:  $|\alpha\rangle = \sum_{eh} A_{eh}^{\alpha} |\psi_e\rangle \otimes |\psi_h\rangle$

**Photoluminescence measurements**



**Multiexciton binding energies**



Zhu, C. et al., Advanced Materials, 2208354 (2022)

Tamarat, P. et al., Nature Comm. 14 (1), 229 (2023)