



HAL
open science

Optimization of RecoBundles for recognition of short white matter bundles

Nabil Vindas, Nicole Labra, Cyril Poupon, Jean-François Mangin

► **To cite this version:**

Nabil Vindas, Nicole Labra, Cyril Poupon, Jean-François Mangin. Optimization of RecoBundles for recognition of short white matter bundles. Organization for Human Brain Mapping (OHBM) 2022, Jun 2022, Glasgow, United Kingdom. 2022. hal-04189509

HAL Id: hal-04189509

<https://hal.science/hal-04189509>

Submitted on 28 Aug 2023

HAL is a multi-disciplinary open access archive for the deposit and dissemination of scientific research documents, whether they are published or not. The documents may come from teaching and research institutions in France or abroad, or from public or private research centers.

L'archive ouverte pluridisciplinaire **HAL**, est destinée au dépôt et à la diffusion de documents scientifiques de niveau recherche, publiés ou non, émanant des établissements d'enseignement et de recherche français ou étrangers, des laboratoires publics ou privés.

Introduction

Although less studied than long-range connections, **superficial white matter** has been linked with **neurodegeneration** during ageing as well as to neurodegenerative diseases like Alzheimer's disease [1]. Most of the studies about **short-range connections** use small cohorts and a very small number of short-range bundles because the **available white matter bundles atlases contain mainly large connections** and the **tools used to study them are adapted for long connections**. Here, we optimize the RecoBundles method [3] for **automated recognition of short fibers** found in the short-range atlases developed by [4]. For each bundle in the atlas, this new method finds geometrical parameters describing the bundle and uses them to extract the bundle in a subject's tractogram. Hence, this method can be applied to big databases and different atlases with little parameter tuning.



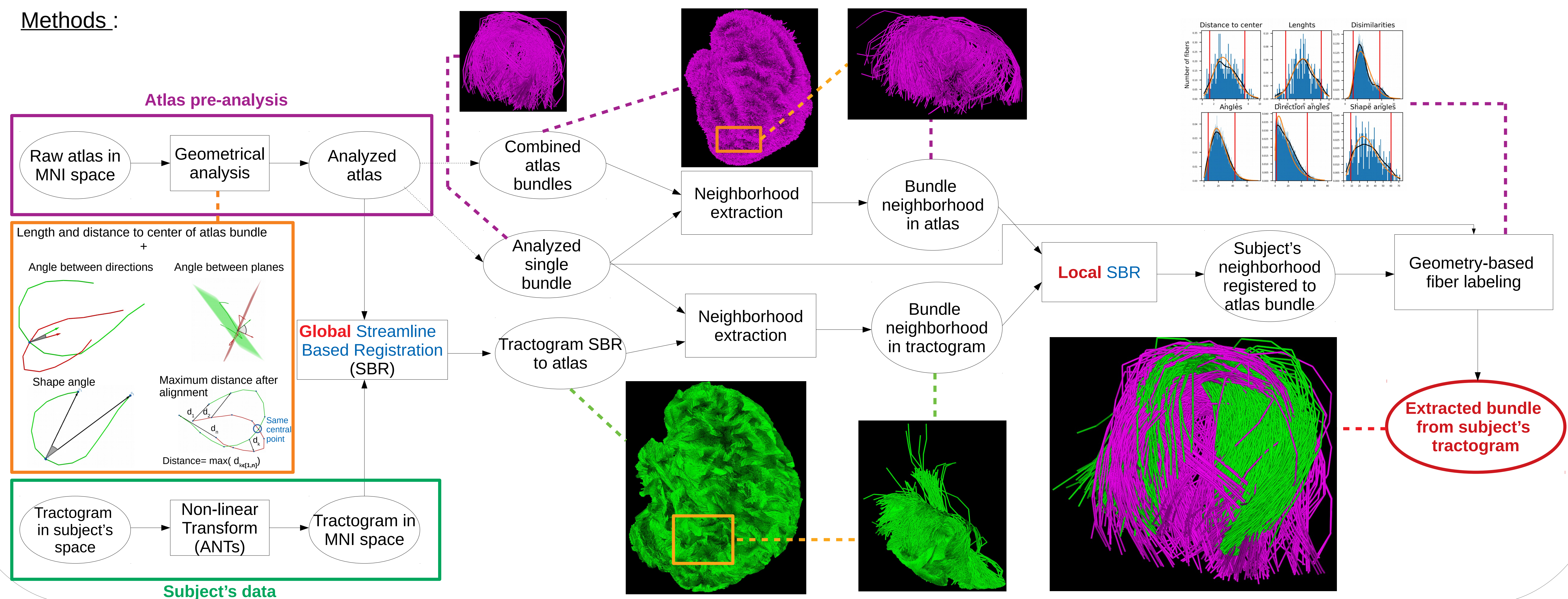
Figure 1 : Different shapes of short-range connections found in the superficial white matter (SWM) atlases developed by [ref] : U-shaped, C-shaped, open U-shaped, V-shaped, 6-shaped, straight and curved.

Materials and methods

Materials :

- **14 healthy subjects from the HCP database** that were among the 76 ones used by [4].
- Subjects registered to **MNI152 space** using a non-linear transformation (ANTs).
- Tractograms computed using MRtrix's **multi-shell multi-tissue model** and its **probabilistic tractography algorithm** (10 000 000 fibers).
- Short-range connection atlas : ARCHI atlas with 486 short bundles [4]

Methods :



Results

Comparison of our method (geoLab : geometrical labeling) to MDF* (mean for the 14 subjects) :

	Affine		ANTs		Disco/Dartel		SBR (geoLab)
	MDF	geoLab	MDF	geoLab	MDF	geoLab	
% found out of 486 bundles	78	77	80	78	36	34	90
% in common to all subjects	62	60	69	65	15	13	83
Adjacency*	0,81	0,85	0,82	0,86	0,75	0,79	0,88
Coverage*	0,74	0,85	0,75	0,85	0,70	0,79	0,87
Overlap*	16,7	21,8	16,8	21,6	14,7	18,8	22,4

* Metrics defined in [2]

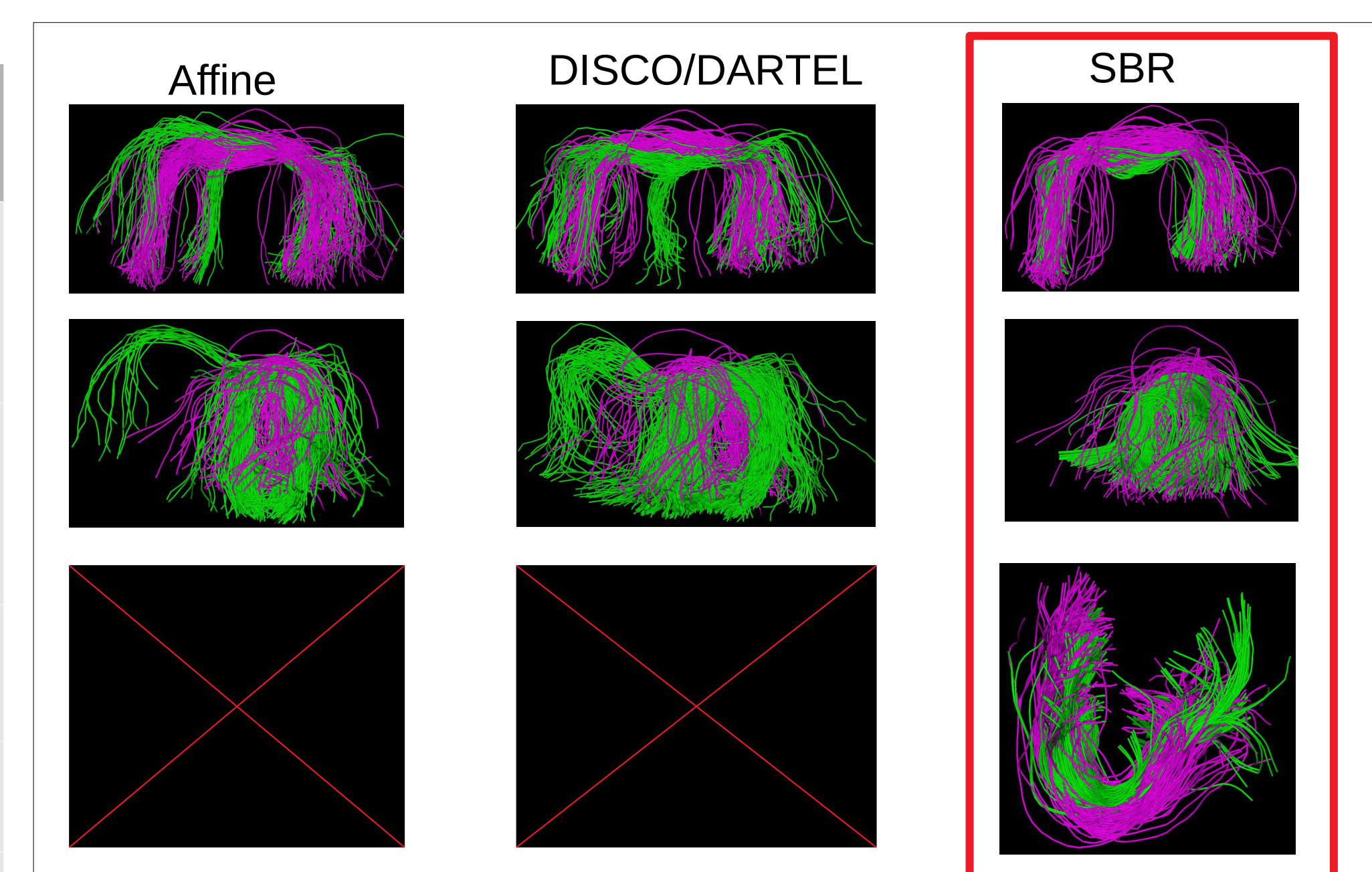


Figure 2 : Instances of extracted bundles using a geometrical approach. In green the extracted bundle and in purple the atlas bundle.

Conclusion

- Group level : **bigger adjacency, coverage and overlap** with SBR.
- Individual level : significant **improvement in the fiber labeling** when using a two-step SBR.
- Working directly in the space of streamlines seems to be **better for the extraction of short-range connections**.

[1] Gao, Junling, Raymond T. F. Cheung, Ying-Shing Chan, Leung-Wing Chu, Henry K. F. Mak, et Tatia M. C. Lee. (2014), 'The Relevance of Short-Range Fibers to Cognitive Efficiency and Brain Activation in Aging and Dementia'. PLoS ONE 9, n° 4

[2] Garyfallidis, Eleftherios, Matthew Brett, Marta Correia, Guy Williams, et Ian Nimmo-Smith. (2012), 'QuickBundles, a Method for Tractography Simplification'. Frontiers in Neuroscience 6

[3] Garyfallidis E., Côté M.A., Rheault F., Sidhu J., Hau J., Petit L., Fortin D., Cunanne S., Descoteaux M. (2017), 'Recognition of white matter bundles using local and global streamline-based registration and clustering'. Neuroimage. vol. 170, pp. 283-295.

[4] Labra-Avila, N. (2020), 'Inference of a U-fiber bundle atlas informed by the variability of the cortical folding pattern'. Doctoral thesis. EOBÉ. Université Paris-Saclay