



HAL
open science

A distributed and parallel scheduling method for demand response in energy communities with distributed generation and storage

Mariam Sangaré, Eric Bourreau, Michael Poss

► To cite this version:

Mariam Sangaré, Eric Bourreau, Michael Poss. A distributed and parallel scheduling method for demand response in energy communities with distributed generation and storage. 2023. hal-04188878v1

HAL Id: hal-04188878

<https://hal.science/hal-04188878v1>

Preprint submitted on 27 Aug 2023 (v1), last revised 15 Jan 2024 (v3)

HAL is a multi-disciplinary open access archive for the deposit and dissemination of scientific research documents, whether they are published or not. The documents may come from teaching and research institutions in France or abroad, or from public or private research centers.

L'archive ouverte pluridisciplinaire **HAL**, est destinée au dépôt et à la diffusion de documents scientifiques de niveau recherche, publiés ou non, émanant des établissements d'enseignement et de recherche français ou étrangers, des laboratoires publics ou privés.

A distributed and parallel scheduling method for demand response in energy communities with distributed generation and storage

Mariam Sangaré¹, Eric Bourreau¹, and Michael Poss¹

¹ LIRMM, University of Montpellier, Montpellier, France, ✉{eric.bourreau,michael.poss,mariam.sangare}@lirmm.fr

Abstract

This paper presents a distributed optimization methods for energy communities having distributed renewable generation and storage units. We explain how the resulting optimization problem can be cast as a bi-level optimization problem where the followers solve mixed-integer linear programs. Given the difficulty of these problems for the dimensions at hand, we develop a heuristic iterative algorithm where incentives are sent to the followers. Specifically, to maximize the collective-self consumption rate, we exploit the notion of allocation key traditionally used a posteriori for economic gain sharing to build an a priori incentive to Demand response. The proposed distributed management method returns a solution within 5% cost of the optimal centralized realistic benchmark’s solution of an instance built over a month with accurate historical data from our demonstrator located in the south of France.

Keywords— Distributed management, Demand response, Collective self-consumption, Bilevel optimization.

1 Introduction

Global economic and demographic growth is driving a significant increase in energy demand. Against this backdrop, governments and communities strive to increase the production and consumption of renewable energies. States are developing regulations to promote access to production and storage tools on the one hand [3, 4], and surplus trading on the other [10, 24, 11]. In this context, collective self-consumption appeared in France in 2015, enabling renewable energy generators to exchange their surpluses with specific individuals. The French Energy Code defines collective self-consumption as an operation linking one or more producers to one or more consumers using the public electricity distribution network for their energy exchanges. In addition to the social benefits, the advantages of collective self-consumption include participating in the energy transition, saving money on energy bills, reducing fuel poverty, and minimizing energy generation surpluses. These energy and economic challenges require optimization tools to maximize local consumption of locally-produced energy.

We consider a set of $|N|$ individuals involved in a collective self-consumption project, each having different asset possession characteristics as schematized in Figure 1 i.e., each member can own or not some local tool. An energy community in this work refers to individuals connected to the same distribution network that produce, consume, and exchange energy. We specifically consider renewable energy communities as defined by [3]. A community coordinator (CC) ensures the community’s good functioning: in terms of collective self-consumption; for example, an aggregator collects the energy surpluses. In such a community, producers can store (if they own a storage system) or exchange their surpluses with other members or the aggregator. No additional links exist between members apart from the green energy exchange ones, i.e., they do not exchange their private information and preferences. CC is the intermediary between members. It collects specific information and shares incentives to ensure the whole community’s good management. Each member remains directly connected to the primary grid and collects energy when needed. In this context, CC maximizes collective self-consumption by optimizing the

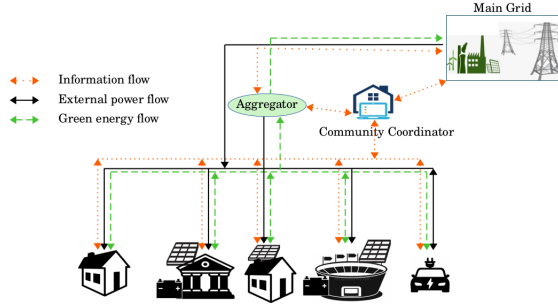


Figure 1: Community.

periodic day-ahead incentives while considering the aggregator’s periodic buying prices and the main grid’s selling prices. CC must build incentives to Demand response (DR) since the members do not directly communicate. DR is a load profile modulation granted by an individual in return for a certain amount of consideration. Thus, CC receives each member’s hourly energy demand and prosumers’ energy availability to compute the incentives. These incentives aim to limit the periodic energy exchanges with the aggregator and the main grid, which is equivalent to maximizing collective self-consumption. They also incentivize prosumers having batteries to store and inject when needed during planning horizon to serve the community or the primary grid. Notice the more green energy is exchanged in the community, the more the coordinator realizes the economic gain as they are correlated; this allows CC to help such a community unleash its potential [7] fully.

As shown in Figure 1, a member can be a traditional consumer, a prosumer with a battery storage system (BSS), or a consumer owing BSS. Following [33], we assume each member has the required control and exchange equipment for this study. Each member must perform certain tasks that we classify into three classes according to their characteristics. The first class contains tasks that allow modulation of certain environments’ temperatures (house room, water heater). We call this type A class. Each member must decide the periodic power consumption to reach the desired temperature at the desired time. We use function θ_j to evaluate the temperature in member i ’s room where task $j \in J_{iA}$ is performed.

- The temperature variation function derived from the Newton cooling law [1] θ_1 is:

$$\theta_1(p_h) = \theta_1(p_{h-1}) + \frac{\Delta}{C_r}(p_h - U(\theta_1(p_{h-1}) - T_h^{\text{out}})),$$

for house rooms. Where C_r is heat capacity (J/K), parameter U designates the heat loss coefficient of a room in (W/K), and Δ is the heating time in second. T_h^{out} is the external temperature at period h .

- For a water heater, using the method from [30], the temperature variation function θ_2 is given by

$$\theta_2(p_h) = \frac{\Delta_h}{M c_p} \left(-\frac{S}{R} [\theta_2(p_{h-1}) - T_h^{\text{room}}] + v p_h - 1000 M_w c_p [\theta_2(p_{h-1}) - T_{in}] \right) + \theta_2(p_{h-1}),$$

where c_p is the isobaric specific heat capacity of water (kcal/kg·°C), v is the efficiency of the electricity-to-heat transformation, M is the weight of the water (kg). The data S designates the exchange surface of the water container with the external area, R is the thermal resistance of the tank insulation in $m^2 \cdot ^\circ\text{C}/\text{W}$ and M_w is the average hot water demand rate during the time interval, which we assume to be equal to zero since we don’t have that information. Parameter T_{in} is the supply domestic cold water temperature, and T^{room} is the temperature of the ambient environment. Finally, Δ_h heating time in seconds.

The schedules start at period 1. We have the initial period $h = 0$ where no decision is required, i.e., $p_0 = 0$. In addition, each task $j \in J_{iA}$ that is performed in room k of member i has a power $\bar{p}_{ijk} > 0$, expressed in kW. In this work, we discretize $[0, \bar{p}_{ijk}]$ by considering only the integer values in $[1, \bar{p}_{ijk}]$ (0 is not considered as in that case, the device is turned off). Our numerical experiments consider devices with $\bar{p}_{ijk} = 2$.

The second class, called type B, contains the tasks that must be performed during defined periods under some energy consumption level constraint (charging the electric vehicle or washer). For example, each member i must decide a schedule in a set of feasible schedules S_{ij} to perform task j . The last class, called type C class, contains uncontrollable tasks. Type C tasks' periodic energy consumption is estimated for each member during the planning horizon. The question we address in this paper is: how to efficiently perform the tasks in a community to maximize the collective self-consumption rate?

Optimization is crucial at all levels of energy system planning. Long-term planning is addressed by [27, 22]. The authors of [27] study a model for extending a power system. The goal is to determine the investment to expand a multi-commodity power system. To do so, the authors consider Demand Response as a capacity reserve. The resulting problem is intrinsically uncertain since DR remains uncertain even over short-term planning. Planning in energy systems is subject to many uncertainties making robust models untenable given the systems' size. In this context, [22] presents a robust optimization framework considering all uncertain parameters. In medium-term planning, [34] presents a bilevel problem of a single leader and several followers. The leader interacts with each follower via a contract detailing the parties' exchange prices. The leader's problem is choosing the contract to propose to each follower to maximize his profit, given that the members may or may not accept them. If a follower refuses the leader's contract, she can exchange with one of the leader's competitors. Each follower's objective is to choose the least expensive contract. Finally, [32] and our work are in short-term planning. The authors of [32] deal with the decentralized coordination of flexible loads and uncertain renewable generation. The authors rely on demand-side incentives to attract low-cost flexibility in a decentralized and uncertain context to balance supply and demand in each period.

Two optimization approaches exist in the literature on energy system planning: centralized and distributed optimization. Centralized optimization methods, which consist of a central manager collecting information and preferences from all members, solving an optimization problem then sending signals to each individual, are widely used in the literature [5, 33] as well as the aforementioned [27, 34]. While they can return optimal solutions, they have some drawbacks:

- The large computational capacity requirement.
- The information bottlenecks which lead to long transfer times.
- The question of social acceptance, since people may be reluctant to accept instructions from a third party regarding the use of their devices [29].

In our context, distributed optimization refers to each member locally determining their loads. Therefore, distributed optimization is a relevant alternative for large electrical systems. Indeed, the computational effort is not borne by an individual, but each member locally solves an optimization problem. The local optimization problems are often some linear program (LP). Some of the most used distributed optimization methods are the alternating direction method of multipliers ADMM [6, 18, 19, 20, 31], dual decomposition [21] and consensus + innovations [13, 15].

Regarding ADMM, [19] proposes a method for day-ahead scheduling and compares the centralized and distributed approaches. Reference [18] presents a distributed model for multi-microgrids that cooperate to reduce the aggregated operational cost. The authors of [31] present a community that cannot inject the surplus in the distribution network and an ADMM-based method to maximize the community's utility. The authors use game theory to model members' preferences. Each member solves an optimization problem to maximize the local utility. Thus, global problems are solved under global constraints, such as the battery storage system (BSS) management constraints. On a ring network composed of several agents, the next agent i starts to calculate and update only after receiving information from the previous agent, which can be problematic for more complex problems. The authors of [6] then present a parallel and distributed method for energy management to increase ADMM's convergence rate.

Turning to Consensus + innovation, [13] presents an approach to coordinate the loads, energy generation, and storage for a set of auto-sufficient agents that compose a microgrid. Each agent interacts with a defined neighborhood to find a consensus on the power supply price while ensuring the total generation and load are equal. The authors of [15] provide a relaxed consensus + innovation-based management to coordinate the power exchanges and prices among the microgrid and the smart grid and study the uncertainty impact on such system's performance.

Finally, the ADMM works in a cascade, making it ineffective for large systems. The authors of [35] present a distributed Lagrangian dual method that rapidly converges based on Nesterov accelerated

gradient and dynamic set-sizes. The author of [17] generalizes the Lagrangians to a wider class of functions that satisfies the strong duality between primal and dual problems then, derives the generalized Karush–Kuhn–Tucker conditions for this generalized Lagrange multiplier method which is helpful to provide consensus protocols.

In this paper, we introduce a bilevel formulation to manage the community:

$$x_L^* = \min_{x_L \in X_L} f_L(x_L, x_F) \quad (1a)$$

$$\text{s.t.} \quad x_F \in \arg \max_{x_F \in X_F} g_F(x_L, x_F), \quad (1b)$$

where x_L and x_F are, respectively, the leader’s and followers’ decision variables, f_L is the leader’s objective function which in our case is the energy coming from the primary grid. Each follower’s objective function is the gain which is negative if the member’s global need is greater than the energy availability; it is positive otherwise. This bilevel formulation is hardly solvable due to integer variables and the problem’s size. Thus, we introduce a heuristic where CC provides the surplus allocation rule called: allocation key as an incentive. The notion of allocation key is a well-known concept used (a posterior) to share the economic gain between the members who share their generation surplus [25]. In this paper, we use the concept of allocation key to share the energy injected by prosumers in the community for day-ahead scheduling. Thus, we define the allocation key as an algorithm that returns the maximum amount of energy a given member can collect from the community at each period. After receiving the incentive, each member determines her load, need, withdraws, and/or storage and injection schedules. Then, she sends her energy need and availability information to CC, which updates its incentives. Since there are no direct information links between each pair of members, prosumer i does not know which part of the injection is consumed in the community. If the total periodic injection exceeds the total needed, the remaining energy is injected into the aggregator; otherwise, the remaining required energy is collected from the primary grid. The main aim is to consume local generation as much as possible locally. As the BSS deteriorate with use, the coordinator must provide some selling prices which cover the marginal degradation cost if it wants them to provide flexibility.

The rest of the paper is structured as follows Section 2 details the formulation of each level of formulation (1). Section 3 presents an iterative heuristic, returning the efficient solution. Section 4 presents the experimental results. The paper concludes with a conclusion in Section 5.

2 Mathematical formulation

In this section, we detail the bilevel formulation (1). CC is the leader and each member in the community is a follower. Let us first detail the input data and followers’ variables, provided in Tables 1 and 2. In addition leader’s variables are the maximum amount of energy a given member can take from the community. We detail next the two main ingredient of problem (1).

2.1 Leader’s problem

CC determines the periodic day-ahead the incentive to maximize the collective self-consumption rate. This incentive that we note F_{ih}^{RCom} is the maximum amount of energy member i can draw from the community at period h . The leader shares the energy between members via F^{RCom} and the remaining energy at period h is denoted I_h which is injected into the main grid. Recall f_L is the leader’s objective function, which designates the total amount of energy collected from the main grid. Minimizing f_L is equivalent to maximizing the collective self-consumption rate. The leader’s problem is:

$$x_L^* = \min_{x_L \in X_L} f_L(x_L, x_F), \quad (2)$$

where x_F represent followers’ response to leader’s decision, and $x_L = (F^{\text{RCom}}, I)$. More explicitly, the leader’s problem is:

$$\min \sum_{i \in N} \sum_{h \in H} C_{ih} \quad (3a)$$

Sets	
N	set of community's members
J_{iA}	set of member i 's type A tasks
J_{iB}	set of member i 's type B tasks
H	set of the planning horizon's periods
K_{ij}^A	set of rooms of member i where task $j \in J_{iA}$ can be performed
S_{ij}	set of schedules given by $i \in N$ for task $j \in J_{iB}$
P_{ijk}^A	set of the power levels available to perform task $j \in J_{iA}$ in room $k \in K_{ij}^A$ of $i \in N$
Parameters	
Δ_h	length of period h (<i>hour</i>)
π_i	member i 's subscribed power level
Γ_i	member's i 's BSS's capacity
ξ_i	initial amount of electricity in member i 's BSS $i \in N$
η_i	member i 's BSS's automatic discharge rate of battery $i \in N$
ϕ_i	member i 's BSS's maximum cycles during horizon H $i \in N$
β	maximum spending degradation threshold allowed (%)
Ω_i	equal to 1 if member i is allowed to exchange electricity, 0 otherwise
d_i, c_i	discharge and charging efficiencies of i 's BSS $i \in N$ (%)
ν_{ijk}	equal 1 if task $j \in J_{iA}$ is executed by member i in room $k \in K_{ij}^A$, 0 otherwise
$\theta_j(p)$	temperature variation function when performing task $j \in J_{iA}$ according to power p
$[t_{ijk}^{\text{low}}, t_{ijk}^{\text{up}}]$	temperature targeted by member i when performing task $j \in J_{iA}$ in room k ($^{\circ}\text{C}$)
$[h_{ijk}^{\text{low}}, h_{ijk}^{\text{up}}]$	time where member i 's confort zone must be reached when performing task $j \in J_{iA}$
$\bar{T}_{i1k}^{\text{room}}$	initial temperature of room $k \in K_{i1}^A$ where member i wants to perform task $j = 1$
$\bar{T}_{i2k}^{\text{water}}$	initial water's temperature in heater $k \in K_{i2}^A$ where member i wants to perform task $j = 2$
$\bar{T}_{ijk}^{\text{all}}$	$\bar{T}_{ijk}^{\text{all}} = \bar{T}_{i1k}^{\text{room}}$ if $j = 1$, $\bar{T}_{ijk}^{\text{all}} = \bar{T}_{i2k}^{\text{water}}$ if $j = 2$
T_h^{out}	outside temperature at time period $h \in H$ ($^{\circ}\text{C}$)
T_{kh}^{room}	ambient temperature in the room where is placed water heater $k \in K_{i2}^A$ at period h ($^{\circ}\text{C}$)
P_{ih}^{gen}	energy production of member i at period h (kW)
P_{ijhs}^B	consumption of task $j \in J_{iB}$ of member i at period h in the schedule $s \in S_{ij}$ (kW)
P_{ih}^{gen}	energy production of member i at period h (kW)
P_{ijhs}^B	consumption of task $j \in J_{iB}$ of member i at period h in the schedule $s \in S_{ij}$ (kW)
$P_i^{\text{in}}, P_i^{\text{out}}$	charging and discharging power of member i 's BSS (kW)
p_{ih}^C	cumulative power consumption of type C tasks at time period $h \in H$
G_i	gain of member $i \in N$ when operating outside a community (€)
v_h^{MG}	unit purchase price of electricity from the primary grid at period $h \in H$ (€/kWh)
\tilde{v}_h^{MG}	unit sale price of electricity to the primary grid during period $h \in H$ (€/kWh)
v_h^{Com}	unit purchase price of electricity in the community during period $h \in H$ (€/kWh)
\tilde{v}_h^{Com}	unit sale price in the community during period $h \in H$ (€/kWh)
v_h^{GES}	unit purchase price to the green energy supplier at period $h \in H$ (€/kWh)
\tilde{v}_h^{GES}	unit sale price to the aggregator at period $h \in H$ (€/kWh)

Table 1: Data.

$$\text{s.t.} \quad \sum_{i \in N} F_{ih}^{\text{RCom}} + I_h = \sum_{i \in N} F_{ih}^{\text{out}} \quad h \in H \quad (3b)$$

$$F_{ih}^{\text{RCom}}, I_h \geq 0 \quad i \in N, h \in H \quad (3c)$$

The leader shares the injection between members and sends the remaining energy I to the aggregator in constraint (3b).

2.2 The followers

Each follower i 's objective is to determine her consumption, injection, and storage schedules to maximize her gain g_F . Let X_F be the feasible region of the lower level's decision variable x_F . Thus:

$$x_F^* = \max_{x_F \in X_F} g_F(x_L, x_F) \quad (4)$$

$x_{ijkhp}^A \in \{0, 1\}$	is equal to 1 if and only if task $j \in J_{iA}$ is at progress at period h in member i 's room $k \in K_{ij}^A$ and the device is on power level p ,
$x_{ij}^s \in \{0, 1\}$	is equal to 1 if and only if schedule $s \in S_{ij}$ is chosen for member i 's task $j \in J_{iB}$,
$z_{ih} \in \{0, 1\}$	is equal to 1 if and only if i 's BSS is charging in time period h ,
$w_{ih} \in \{0, 1\}$	is equal to 1 if and only if i 's BSS's state changes from discharging or inactive to charging at period h ,
$T_{ijkh} \geq 0$	the temperature in room k of i where task $j \in J_{iA}$ is performed at period h ,
$q_{ih} \in \mathbb{R}$	is the amount of energy injected into/out i 's BSS at period h , with $q_{bih} \leq 0$ if b discharges, $q_{bih} \geq 0$ if b charges, and $q_{bih} = 0$ if b is inactive,
$E_{bih} \geq 0$	the amount of electricity available in battery $b \in B_i$ of i at the end of period h ,
$F_{ih}^{\text{out}} \geq 0$	is the amount of energy injected by member i at period h ,
$F_{ih}^{\text{in}} \geq 0$	is the amount of energy drawn from the community by member i at period h ,
$C_{ih} \geq 0$	is the amount of energy withdrawn from the grid by member $i \in N$ at period h ,
$\tilde{G}_i \in \mathbb{R}$	is the gain of member i when operating in the community.

Table 2: Each member's variables.

The detailed lower level problem is presented in what follows. Each follower i has individual constraints related to the tasks to perform. These are listed below and commented subsequently.

$$\sum_{s \in S_{ij}} x_{ij}^s = 1 \quad j \in J_{iB} \quad (5a)$$

$$\forall j \in J_{iA}, k \in K_{ij}^A,$$

$$\sum_{p \in P_{ijk}^A} x_{ijkhp}^A \leq 1 \quad h \in H \quad (5b)$$

$$T_{ijkh} = \theta_j \left(\sum_{p \in P_{ijk}^A} p \cdot x_{ijkhp}^A \right) \quad h \in H \quad (5c)$$

$$\text{if } \nu_{ijk} = 1$$

$$t_{ijk}^{\text{low}} \leq T_{ijkh} \leq t_{ijk}^{\text{up}} \quad h \in [h_{ijk}^{\text{low}}, h_{ijk}^{\text{up}}] \quad (5d)$$

$$T_{ijk0} = \bar{T}_{ijk}^{\text{all}} \quad (5e)$$

Recall a type A task is performed to regulate the temperature in certain rooms (room or water heating), and the type B task must be performed under time window and consumption level constraints. Constraint (5a) refers to type B tasks. Indeed, for each type B task, exactly one schedule must be selected. Constraints (5b)–(5e) are related to type A tasks. At each period, for each type A task, at most, one power level is selected (5b). Constraint (5c) ensures the temperature calculation at each period. Constraint (5d) imposes the temperature to be in the desired comfort zone, and (5e) sets the initial rooms' temperature.

Another individual $\forall i \in N$ constraints concern the BSS management constraint:

$$\Delta_h d_i P_i^{\text{out}} (z_{ih} - 1) \leq q_{ih} \quad h \in H \quad (6a)$$

$$q_{ih} \leq \Delta_h c_i P_i^{\text{in}} z_{ih} \quad h \in H \quad (6b)$$

$$z_{ih} - z_{i(h-1)} \leq w_{i(h-1)} \quad h \in 2, \dots, |H| \quad (6c)$$

$$\frac{E_{ih} - q_{i(h-1)}}{E_{i(h-1)}} = \eta_i \quad h \in 1, \dots, |H| \quad (6d)$$

$$\sum_{h \in H} w_{ih} \leq \phi_i \quad (6e)$$

$$E_{ih} \leq \Gamma_i \quad h \in H \quad (6f)$$

$$E_{i0} = \xi_i \quad (6g)$$

Constraints (6a) and (6b) avoid the simultaneous BSS's charge and discharge. Variable q_{ih} is the amount injected if positive. Otherwise, it is the amount discharged from BSS. (6d) updates the BSS's state at

each period, and (6e) limits the number of cycles during the planning horizon. Constraint (6f) enforces the amount of energy in the BSS to be less than its capacity and (6g) sets the BSS's initial state.

Each member i maximizes her gain \tilde{G}_i . Constraint (7a) calculates member i 's gain that must not be deteriorated by more than $\beta\%$ of i 's state when she does not exchange energy (7b). Prosumers gain also depends on the amount injected in the aggregator, we denote τ_{ih} as a parameter that designate member i 's contribution to this amount at period h .

$$\tilde{G}_i = \sum_{h \in H} [v_h^{\text{Com}} F_{ih}^{\text{out}} - \tilde{v}_h^{\text{Com}} F_{ih}^{\text{in}} + \tau_{ih} v_h^{\text{GES}} I_h - \tilde{v}_h^{\text{MG}} C_{ih}] \Delta_h \quad (7a)$$

$$\frac{\tilde{G}_i - G_i}{|G_i|} \geq \beta. \quad (7b)$$

In addition, each member i has some global operational constraints at each period $h \in H$ which are:

$$\sum_{j \in J_{iA}} \sum_{k \in K_{ij}^A} \sum_{p \in P_{ijk}^A} p \cdot x_{ijkhp}^A + \sum_{j \in J_{iB}} \sum_{s \in S_{ij}} P_{ijhs}^B x_{ijs}^s + p_{ih}^C + \frac{q_{ih}}{\Delta_h} = P_{ih}^{\text{Gen}} + C_{ih} + F_{ih}^{\text{in}} - F_{ih}^{\text{out}} \quad (8a)$$

$$F_{ih}^{\text{out}} \leq P_{ih}^{\text{Gen}} + \frac{E_{ih}}{\Delta_h} \Omega_i \quad (8b)$$

$$F_{ih}^{\text{in}} + C_{ih} \leq \pi_i \quad (8c)$$

$$F_{ih}^{\text{in}} \leq F_{ih}^{\text{RCOM}} \quad (8d)$$

$$F_{ih}^{\text{out}} \leq \pi_i \quad (8e)$$

Constraint (8a) ensures energy conservation. A member can inject if she is a prosumer or a prosumer owning BSS (8b). Parameter Ω_i equals one if member i can inject energy, i.e., if i is a prosumer or holds a BSS, 0 otherwise. Constraints (8c), and (8e) enforce each member's energy flows to the less than her subscribed power. Constraint (8d) imposes F_{ih}^{RCOM} as the upper bound on F_{ih}^{in} for $i \in N, h \in H$

Finally, we have the variables domains defined as follows: $\forall i \in N, j \in J_{iA}, h \in H, p \in P_{ijk}^A, k \in K_{ij}^A, j' \in J_{iB}, s \in S_{ij}$,

$$x_{ijkhp}^A \in \{0, 1\} \quad (9a)$$

$$x_{ijs'}^s \in \{0, 1\} \quad i \in N \quad (9b)$$

$$z_{ih}, w_{ih} \in \{0, 1\} \quad (9c)$$

$$F_{ih}^{\text{out}}, F_{ih}^{\text{in}}, C_{ih}, E_{ih} \geq 0, q_{ih} \in \mathbb{R} \quad (9d)$$

Overall, the lower level problem is:

$$\begin{aligned} \max \quad & \tilde{G}_i \\ \text{s.t.} \quad & (5), (6), (7), (8), (9). \end{aligned} \quad (10a)$$

2.3 The full bilevel problem

The bilevel problem's generic form is:

$$x_L^* = \min_{x_L \in X_L} f_L(x_L, x_F) \quad (11a)$$

$$\text{s.t.} \quad x_F \in \arg \max_{x_F \in X_F} g_F(x_L, x_F), \quad (11b)$$

which contains some integer variables in the lower level. Therefore, classical approaches like KKT reformulation cannot be used. Despite the recent progresses for solving mixed-integer bilevel linear program [8, 16], some based on intersection cuts [9], these problems remain extremely difficult to solve exactly and hardly capable of addressing the large problems we encounter in this work. Therefore, we propose a greedy algorithm where each member operates independently of the others, and the coordinator coordinates the demand response.

3 Iterative heuristic

Since the bilevel program (11) can hardly be solved exactly for the large instances, we introduce a heuristic algorithm. Each member determines local schedules and sends information about power requirements and availability to CC, the intermediary between members. Before presenting our distributed framework, we present the local scheduling model solved by each member. The local scheduling model for each member $i \in N$ is the following:

$$\begin{aligned} \max \quad & \tilde{G} \\ \text{s.t.} \quad & (5), (6), (7a), (8), (9). \end{aligned} \tag{12a}$$

Model (12) does not contain constraint (7b) since the prosumer's gain depends on the ability to exchange energy. The members do not have information on the community's state in the distributed scheme. As a result, consumers do not know when to consume, and who sends the received energy. Thus, at each iteration, CC will provide the information F^{RCom} to incentivize the members to shift their consumption to period $h \in H$ where F_{ih}^{RCom} exceeds zero.

3.1 Allocation keys

Allocation keys are traditionally used as an after-the-fact means of distributing financial gains among members who inject their surplus during one month. Used a posteriori, allocation key is not an incentive since members cannot decide at this point. In this paper, we use allocation keys for day-ahead scheduling. We use this notion to incentivize members to modulate their consumption during their local day-ahead planning. Therefore, in this paper, the allocation key is an algorithm that returns values that indicates to each member the maximum amount of energy she can collect from the community.

Definition 1. An allocation key is an algorithm **K** that, given C_{ih} and F^{out} , computes F_{ih}^{RCom} for $i \in N, h \in H$.

The key allows CC to indicate the energy availability state to each member without sharing private information with the members. Several a posteriori key exist in the literature [25], some currently used in the French electrical power system. Among the keys in the literature, we have the allocation in prorate to consumption, production, investment etc. The a posteriori key used in Smart Lou Quila [23] inspires **K1**. We further introduce a second key, denoted **K2**, that fits well with day-ahead scheduling.

- **Fair repartition (K1).** Presented in Algorithm 3 for $l = 1$, this key shares the energy according members' demand. Lines 7–10 in Algorithm 3 address the case where the total injection $\sum_{i \in N} F_{ih}^{\text{out}}$ exceeds the demand $\sum_{i \in N} C_{ih}$ for $h \in H$. In this case, each member i receives the amount C_{ih} at period h . In lines 14–31, we consider case where each member can receive the minimum energy required in the community C^{min} at a given period h , i.e., if $|N| \cdot C^{\text{min}} \leq \text{residual}$. In that case, we allocate C^{min} to members. We remove the satisfied members and share the *residual* energy among the remaining members. In lines 29–31 the residual is insufficient to serve each member, i.e., $u \cdot C^{\text{min}} \geq \text{residual}$, where u is the number of unsatisfied members so, we share the *residual* uniformly among the remaining members. In lines 34–35, we handle the case where the energy available is insufficient to satisfy the total need and not sufficient to allocate C^{min} to each member, so we share the energy available uniformly between members. Finally, in lines 38–40, value F_{ih}^{RCom} equals zero for each member i if the total injection equals zero at period h .
- **Peer need (K2).** This key consists in determining the candidates for the energy reception and then sharing (uniformly) the power between these members. Member i is a candidate at period h if she does not inject energy, i.e., if $F_{ih}^{\text{out}} = 0$. After receiving all members' information, CC determines at each period who are the individuals likely to receive energy and shares the energy available uniformly among these members as detailed in Algorithm 1 where σ_{ih} is equal to 1 if member $i \in N$ is a candidate to receive energy from other members at period $h \in H$, in other words, if $F_{ih}^{\text{out}} = 0$. Value σ_h^{Tot} is the number of candidates to receive energy from the community at period $h \in H$.

We set $F_h^{\text{in}} = \sum_{i \in N} F_{ih}^{\text{in}}$ and $F_h^{\text{out}} = \sum_{i \in N} F_{ih}^{\text{out}}$ for $h \in H$ for simplicity in Algorithm 2.

Algorithm 1: Key **K2 (per need).**

Input : F^{out}
Output: initial F^{RCom}
 $\sigma_h^{\text{Tot}} = |N|$; $\sigma_{ih} \leftarrow 1$ for $i \in N, h \in H$
for $h \in H$ **do**
 for $i \in N$ **do**
 if $F_{ih}^{\text{out}} > 0$ **then**
 $\sigma_{ih} \leftarrow 0$
 $\sigma_h^{\text{Tot}} \leftarrow \sigma_h^{\text{Tot}} - 1$
 for $i \in N$ **do**
 $F_{ih}^{\text{RCom}} \leftarrow \sigma_{ih} \sum_{i' \in N} F_{i'h}^{\text{out}} / \sigma_h^{\text{Tot}}$

Algorithm 2: Update **K2.**

Input : $F^{\text{in}}, F^{\text{out}}$ and F^{RCom}
Output: updated F^{RCom}
 $\sigma_h^{\text{Tot}} = |N|$; $\sigma_{ih} \leftarrow 1$ for $i \in N, h \in H$
for $h \in H$ **do**
 for $i \in N$ **do**
 if $F_{ih}^{\text{RCom}} - F_{ih}^{\text{in}} > 0$ **then**
 $\sigma_{ih} \leftarrow 0$; $F_{ih}^{\text{RCom}} \leftarrow F_{ih}^{\text{in}}$
 $\sigma_h^{\text{Tot}} \leftarrow \sigma_h^{\text{Tot}} - 1$
 for $i \in N$ **do**
 $F_{ih}^{\text{RCom}} \leftarrow$
 $F_{ih}^{\text{RCom}} + \sigma_{ih} (F_h^{\text{out}} - F_h^{\text{in}}) / \sigma_h^{\text{Tot}}$

- **Fair repartition (**K3**)**. Key **K1** allocates energy even to members who inject energy since it is based on consumption, and there is no test on prosumers' injections. Thus, a prosumer can simultaneously receive and inject energy at certain periods. To avoid simultaneous injection and extraction, we combine keys **K1** and **K2** in a key called **K3**. Key **K3** is presented in Algorithm 3 for input $l = 3$. We add some lines into **K1** that allow determining the candidates as defined previously. Thus, **K3** allocates energy according to consumption to members who need energy.
- **In prorate to consumption (**K4**)**. This key consist in sharing the surplus in prorate to consumption between members in need. Thus,

$$F_{ih}^{\text{RCom}} = \frac{\sigma_{ih} C_{ih}}{\sum_{i' \in N: \sigma_{i'h} > 0} C_{i'h}} \sum_{i' \in N} F_{i'h}^{\text{out}},$$

where σ_{ih} equals one if member i is candidate to receive energy as defined in **K2**.

- **In prorate to investment (**K5**)**. This key consist in sharing the surplus between the members who need energy in prorate to their investment in storage and generation tools. Thus, let us note Σ_i as member i 's total investment to aquire some tools,

$$F_{ih}^{\text{RCom}} = \frac{\sigma_{ih} \Sigma_i}{\sum_{i' \in N: \sigma_{i'h} > 0} \Sigma_{i'}} \sum_{i' \in N} F_{i'h}^{\text{out}}.$$

Notice that keys **K1** and **K3** are fair in the sens of [14], i.e., the member who consumes the less is favored to the one who consumes the most while sharing the surplus. Key **K1** does not encourage members to modulate their consumption in the previous setting, as shown in the results section. In contrast, key **K2** may encourage consumption modulation. Note that by using the key **K2**, some members needing energy might receive more than required at certain times since the surplus is allocated uniformly, hence the need to update values F_{ih}^{RCom} at each iteration to ensure more efficient management. Let us denote $F_h^{\text{out}} = \sum_{i \in N} F_{ih}^{\text{out}}$ $h \in H$ and $F_h^{\text{in}} = \sum_{i \in N} F_{ih}^{\text{in}}$ $h \in H$ for each period $h \in H$. Thus, $F_h^{\text{rest}} = F_h^{\text{out}} - F_h^{\text{in}}$, is the amount of remaining energy after each iteration using key **K2**. Since the members determine their schedules after receiving F^{RCom} , these values should be dynamic to avoid giving energy to members that do not need it. Indeed, CC must reallocate F_h^{rest} . We update key **K2** as presented in Algorithm 2. Member i will not receive more energy then F_{ih}^{in} at period h if $F_{ih}^{\text{RCom}} - F_{ih}^{\text{in}} > 0$.

3.2 The overall algorithm

Each member initially solves the load scheduling MILP with no energy exchanges between the members, i.e., $F_{ih}^{\text{RCom}} = 0$ for $i \in N, h \in H$. That allows members to determine their initial periodic energy needs and availability. The members then send their injection and need information to CC, who shares the energy available using the allocation key, sends values F_i^{RCom} to each member who updates the local schedules,

Algorithm 3: key **K1** and **K3** (fair repartition).

```

Input      :  $C, F^{\text{out}}$  and  $l \in \{1, 3\}$ 
Output     :  $F^{\text{RCom}}$ 
1 if  $l = 3$  then  $\sigma_h^{\text{Tot}} = |N|$  for  $h \in H$ ;    $\sigma_{ih} = 1$    for  $i \in N, h \in H$ 
2 for  $h \in H$  do
3   if  $\sum_{i \in N} F_{ih}^{\text{out}} > 0$  then
4     for  $i \in N$  do
5       if  $F_{ih}^{\text{out}} > 0$  and  $l = 3$  then
6          $\sigma_{ih} \leftarrow 0$ ;    $\sigma_h^{\text{Tot}} \leftarrow \sigma_h^{\text{Tot}} - 1$ ;    $C_{ih} \leftarrow +\infty$ 
7     if  $\sum_{i \in N} F_{ih}^{\text{out}} \geq \sum_{i \in N} C_{ih}$  then
8       for  $i \in N$  do
9         if  $l = 1$  then
10           $F_{ih}^{\text{RCom}} \leftarrow C_{ih}$ 
11        else
12           $F_{ih}^{\text{RCom}} \leftarrow C_{ih} \cdot \sigma_{ih}$ 
13      else
14         $C^{\min} \leftarrow \min_{i \in N}(C_{ih})$ 
15        if  $l = 1$  then  $u \leftarrow |N|$  else  $u \leftarrow \sigma_h^{\text{Tot}}$ 
16        if  $u \cdot C^{\min} \leq \sum_{i \in N} F_{ih}^{\text{out}}$  then
17          for  $i \in N$  do
18            if  $l = 1$  then  $idx_i \leftarrow i$  else  $idx_i \leftarrow i \cdot \sigma_{ih}$ 
19           $residual \leftarrow \sum_{i \in N} F_{ih}^{\text{out}}$ 
20          while  $u \cdot C^{\min} \leq residual$  do
21             $m \leftarrow 0$ 
22            for  $i \in N$  do
23              if  $idx_i \neq 0$  then
24                 $F_{ih}^{\text{RCom}} \leftarrow F_{ih}^{\text{RCom}} + C^{\min}$ 
25              if  $C_{ih} = C^{\min}$  then
26                 $m \leftarrow m + 1$ ;    $idx_i \leftarrow 0$ ;    $C_{ih} \leftarrow +\infty$ 
27             $residual \leftarrow residual - u \cdot C^{\min}$ 
28             $u \leftarrow u - m$ ;    $C^{\min} \leftarrow \min_{i \in N}(C_{ih})$ 
29          for  $i \in N$  do
30            if  $idx_i \neq 0$  then
31               $F_{ih}^{\text{RCom}} \leftarrow F_{ih}^{\text{RCom}} + (residual/u)$ 
32        else
33          for  $i \in N$  do
34            if  $l = 1$  then
35               $F_{ih}^{\text{RCom}} \leftarrow (\sum_{i \in N} F_{ih}^{\text{out}} / u)$ 
36            else
37               $F_{ih}^{\text{RCom}} \leftarrow (\sum_{i \in N} F_{ih}^{\text{out}} / u) \cdot \sigma_{ih}$ 
38      else
39        for  $i \in N$  do
40           $F_{ih}^{\text{RCom}} \leftarrow 0$ 

```

Algorithm 4: Distributed management model.

Input : $\mathbf{K} \in \{\mathbf{K1}, \mathbf{K2}, \mathbf{K3}\}$
Output: F^{RCom} and the local best schedules

Step 0: $F_{ih}^{\text{RCom}} \leftarrow 0$ for $i \in N, h \in H, \text{iter} \leftarrow 1$

Each member i solves (12) (in parallel) and sends (F_i^{out}, C) to CC; $F_h^{\text{rest}} \leftarrow F_h^{\text{out}}$
Step 1: CC determines F^{RCom} using key \mathbf{K} and sends F_i^{RCom} to member i who solves (12) for $i \in N, \text{iter} \leftarrow \text{iter} + 1$
if $\mathbf{K} = \mathbf{K2}$ **then**

 while $\text{iter} \leq \text{maxIter}$ **do**

 CC updates F^{RCom} using Algorithm 2 and sends F_i^{RCom} to member $i \in N$

 Each member i solves (12) and sends $(F_i^{\text{out}}, F^{\text{in}})$ to CC, $\text{iter} \leftarrow \text{iter} + 1$
Step 2: Manage F^{rest} which corresponds to variable I , determine τ for gain sharing.

and so on until the community reaches an acceptable level for the day's operations. Algorithm 4 presents the distributed management framework.

At the end of the second step, if there exists a period h where $F_h^{\text{rest}} \neq 0$, the amount F_h^{rest} is injected into the aggregator, and the economic gain associated to F^{rest} is shared between the prosumers inject their surplus, **Step 2** refers to that in Algorithm 4. We do not treat this gain-sharing aspect in this paper. Observe that, for $\mathbf{K} = \mathbf{K2}$, the members' local solutions do not change after at most $\text{maxIter} = |N| + 1$ if each local problem is optimally solved at each iteration. Indeed, at each iteration, a group of $l \in \{1, \dots, |N|\}$ members is satisfied and removed from the set of candidates to receive energy all over the horizon. These members will not receive more energy over the horizon: their solutions stay the same, and F_h^{rest} is allocated to the candidates $h \in H$ who optimally solve their problem. The worst case occurs if $l = 1$ at each iteration; hence $\text{maxIter} = |N| + 1$ iterations with the initial iteration.

3.3 The remaining energy and storage

The members that own BSS should be encouraged to store energy at certain periods of the planning horizon. Indeed, since CC maximizes the consumption of locally produced energy and the member the local profit, the prosumers can inject more energy than required to satisfy the global energy need. If $\sum_{i \in N} F_{ih}^{\text{out}}$ is greater than the energy requirement at period h , a portion of it can be consumed in the community, and the other is injected into the main grid (MG) or stored. Being decentralized, prosumers and CC cannot foresee what portion is consumed locally. Therefore, CC can only provide storage incentives when needed. Thus, members owning a BSS are encouraged to store if the need is less than the energy available or if CC wants the community to provide energy to the main network. The storage incentive must prioritize local consumption, hence, the interest in setting limits to the maximum a member who owns a battery can store. Let us introduce ρ_{ih} as the value which limits member $i \in N$ injection at period $h \in H$. We assume that ρ_{ih} is proportional to quantity depending on member $i \in N$'s physical characteristic in terms of asset owing plus a variable a quantity depending on the member i 's participation in the global production, which multiplies the global need.

$$\rho_{ih} = \delta_i + \frac{P_{ih}^{\text{Gen}}}{\sum_{i' \in N} P_{i'h}^{\text{Gen}}} C_h \quad h \in H. \quad (13)$$

We set ρ_{ih} for each $i \in N, h \in H$ such that it is proportional to the energy need, and inversely proportional to the community's generation as presented in constraint (13), where δ_i is an ad-hoc constant determined by trial and error. This makes sense since we assume that the self-discharge rate of the batteries is low. We add constraints (14) to the members' model (12).

$$F_h^{\text{out}} \leq \rho_{ih} \zeta_i + \pi_i (1 - \zeta_i) \quad h \in H, \quad (14)$$

where ζ_i is equal to 1 if member $i \in N$ owns a storage unit, 0 otherwise and δ_i a physical parameter related to member i 's generation and storage systems' size. Figure 6 presents the periodic F^{rest} and Need before and after adding constraints (14).

4 Numerical experiments

We use a realistic instance based on Smart Lou Quila’s seven-member demonstrator [23]. The planning horizon consists of a day sliced into 24 equal-length periods. The first six members’ real asset-owing characteristics are presented in Table 3. The last member does not have any assets. Members subscribed power are respectively $\pi = [36, 9, 6, 9, 9, 6, 9]$ kVa.

Member 1		Member 2	
Photovoltaic (PV)	Yes	PV	Yes
PV Capacity	6.12kWp	PV Capacity	3.2kWp
Battery	Yes	Battery	Yes
Number	1 unit	Number	1 unit
Capacity	9.8kWh	Capacity	9.8kWh
Initial state of charge	4.5kWh	Initial state of charge	4.5kWh
Efficiency	97.5%	Efficiency	97.5%
Power	5kW	Power	3.7kW
Periodic discharge rate	1%	Periodic discharge rate	1%
Member 3		Member 4	
PV	No	PV	Yes
PV Capacity	0kWp	PV Capacity	3.2kWp
Battery	yes	Battery	No
Number	1 unit	Number	0 unit
Capacity	9.8kWh	Capacity	0kWh
Initial state of charge	4.5kWh	Initial state of charge	0kWh
Efficiency	97.5%	Efficiency	0%
Power	3.7kW	Power	0kW
Periodic discharge rate	1%	Periodic discharge rate	0%
Member 5		Member 6	
PV	Yes	PV	Yes
PV Capacity	3.2kWp	PV Capacity	3.2kWp
Battery	No	Battery	No

Table 3: Production and storage assets description in the community.

We use the energy generation data collected on July 23th 2022. Figure 2 presents prosumers’ individual production and the community’s total periodic production. The members’ loads are artificially generated. In other words, we generate some loads of the different types namely type A, B, and C. The following array ν shows the requested type A tasks by each member. We consider two different type A tasks i.e. $|J_{iA}| = 2 \forall i \in N; \forall j \in J_{iA}, j = 1$ means the corresponding task is room heating and $j = 2$ means that the requested task is water heating. Finally, ν_{ijk} is equal to 1 if task $j \in J_{iA}$ is executed by member i in room k , 0 otherwise. We refer to [26] for more details:

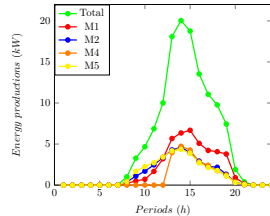


Figure 2: Generation on July 23th 2022.

$$\nu_1 = \begin{pmatrix} \mathbf{1} & \mathbf{1} \\ 0 & 1 \\ 1 & 1 \\ 1 & 1 \\ 1 & 1 \\ 0 & 1 \\ 1 & 1 \end{pmatrix} \quad \nu_2 = \begin{pmatrix} \mathbf{1} & \mathbf{0} \\ 0 & 0 \\ 1 & 0 \\ 0 & 0 \\ 0 & 0 \\ 1 & 0 \\ 1 & 0 \end{pmatrix} \quad \nu_3 = \begin{pmatrix} \mathbf{0} & \mathbf{0} \\ 1 & 0 \\ 1 & 0 \\ 0 & 0 \\ 0 & 0 \\ 1 & 0 \\ 1 & 0 \end{pmatrix}.$$

Table 4 presents members 2 to 7 houseroom characteristics. For simplicity we assume that each room k

Member	room	Surface	C_r	U
Member 2	room 1	$9m^2$	297	12
	room 2	$15m^2$	495	20
	room 3	$18m^2$	594	24
Member 3	room 1	$18m^2$	594	24
	room 2	$9m^2$	297	12
	room 3	$9m^2$	297	12
Member 4	room 1	$12m^2$	396	16
	room 2	$20m^2$	660	26.6
	room 3	$12m^2$	396	16
Member 5	room 1	$25m^2$	825	33.3
	room 2	$10m^2$	330	13.3
	room 3	$12m^2$	396	16
Member 6	room 1	$18.5m^2$	610.5	24.6
	room 2	$9m^2$	297	12
	room 3	$10m^2$	330	13.3
Member 7	room 1	$15m^2$	495	20
	room 2	$10m^2$	330	13.3
	room 3	$14m^2$	462	18.6

Table 4: Rooms physical characteristics.

of each member has an initial temperature equal to 22°C and that the temperature of these rooms must lie in the interval $[t_{ik}^{\text{low}}, t_{ik}^{\text{up}}]$ during the time interval $[34, 48]$.

$$t^{\text{low}} = \begin{pmatrix} 20 & 19 & 20 & 20 & 21 & 20 & 19 \\ 20 & 19 & 20 & 20 & 20 & 20 & 19 \\ 20 & 19 & 20 & 20 & 20 & 20 & 19 \end{pmatrix} t^{\text{up}} = \begin{pmatrix} 25 & 25 & 25 & 25 & 25 & 25 & 25 \\ 25 & 25 & 25 & 25 & 25 & 25 & 25 \\ 25 & 25 & 25 & 25 & 25 & 25 & 25 \end{pmatrix}$$

Each member has a single water heater, and Table 5 presents their physical characteristics. Parameter $c_p = 1$ is the specific heat capacity of water. Column M shows the weight of the water (kg), column S designates the exchange surface of the water container with the external area, K is the exchange coefficient ($\text{kcal}/\text{h}\cdot\text{m}^2\cdot^\circ\text{C}$). Finally, column \bar{T}^{water} presents the initial temperature of each member's water heater. The members' water must reach 60°C at period 16. The efficiency of the electricity-to-heat transformation $v = Mc_p / (Mc_p r + \Delta SKr)$. Also, for simplicity, we assume that p_{ih}^c which is member

Member	S	M	\bar{T}^{water}	K	r
1	7	350	15	1	1.2
2	1.5	75	17	1	1.2
3	2	100	18	1	1.2
4	3.75	200	19	1	1.2
5	2.4	150	10	1	1.2
6	2	100	10	1	1.2
7	2.6	150	8	1	1.2

Table 5: Water heaters characteristics.

$i \in N$ non-controllable consumption at period h , is equal to one for each member at each period.

4.1 Keys comparison

We present our numerical results in this section. First, we compare the key calculation methods, and an illustration of the need for CC to control storage. Then, we show the impact of this control on the distributed solution. Each member’s local scheduling problem (12) is reformulated using Special Ordered Set variables as presented in Section 7.1 of [26] with a time limit `time_limit = 20` seconds. Table 6 presents the distributed solution for our instance. We do not update **K2**. In this table, Column **Avail** is the amount of photovoltaic energy that can be shared in the community or injected into the main grid, and column **Loss** is part of **Avail** that needs to be injected into the main grid. Table 6 shows

Key	Distributed solutions			
	obj kWh	CPU	Available kWh	Loss kWh
K1	125.62	0.20	27.97	13.78
K2	115.50	0.20	27.97	3.65
K3	117.96	0.20	27.97	6.11
K4	115.50	0.25	27.97	3.65
K5	119.30	0.25	27.97	7.44

Table 6: Key comparison.

that the distributed management with keys **K2** and **K4** returns the best solutions, i.e., ensures more local consumption of green energy than the other keys. Since initial consumption is determined without information, consumers consume randomly to meet their initial optimum. Therefore, a sharing scheme based on consumption will not incentive these members to shift the load. On the other hand, sharing based on consumption leads to allocating energy to members who do not need it. Figure 3 shows the different keys’ consumption shifts during the planning horizon after $|N| + 1$ iterations for key **K2**, and two iterations for **K1** and **K3**. Curves **Available** and **Used** represent respectively the amount of green

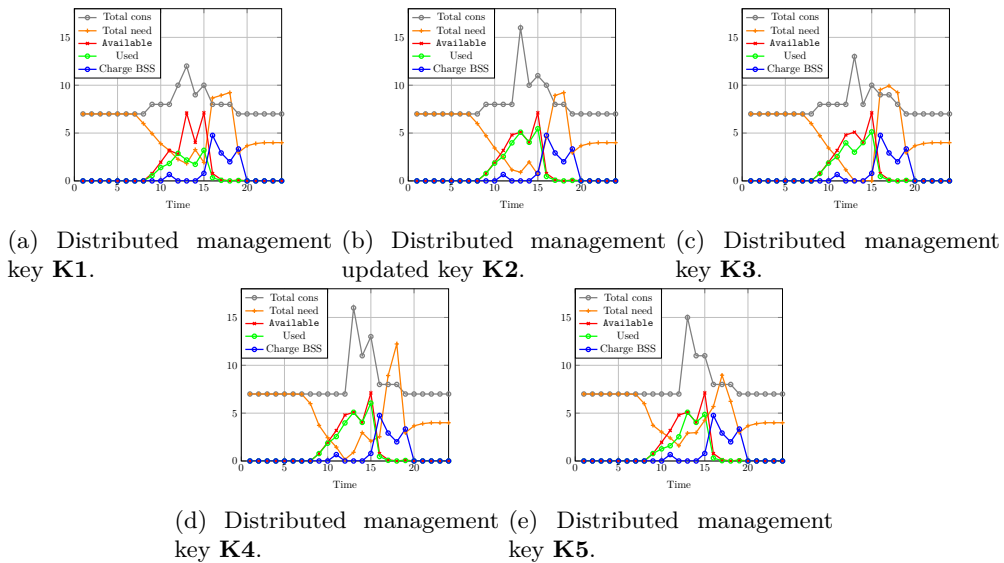


Figure 3: Demand response illustration.

energy injected by prosumers and the amount of green energy available which is locally consumed. **Total need** represents the total energy needed in the community for direct consumption or to be stored for ulterior consumption. The area between curves **Available** and **Used** is the energy injected into the main grid. It corresponds to column **Loss** in Table 6. Allocating energy to members who need it reduces the area between available and **Used** curves, leading to a good distributed solution.

Table 7 presents the solution instance using updated **K2**. Iteration 1 in column 1 corresponds to the case where $F^{RCOM} = 0$. Each column shows each member’s total energy collected from the main grid during the planning horizon, one row per member. Row **Sum** presents the energy collection for the whole community during the planning horizon. Updating keys provides good solutions for distributed

iteration \ Members	1	2	3	4	5	6	7	8	9
1	8.71	8.13	8.13	8.13	8.13	8.13	8.13	8.13	8.13
2	7.6	7.6	7.6	7.6	7.6	7.6	7.6	7.6	7.6
3	12	9.86	9.69	9.64	9.64	9.63	9.63	9.63	9.63
4	13.52	12.39	12.39	12.39	12.39	12.39	12.39	12.39	12.39
5	34	26.84	26.21	25.75	25.66	25.58	25.56	25.54	25.54
6	31	23.84	23.21	22.75	22.66	22.58	22.56	22.54	22.54
7	34	26.84	26.27	26.09	26.06	26.04	26.03	26.03	26.03
Sum	139.83	115.5	113.5	112.35	112.14	111.94	111.9	111.86	111.86

Table 7: Distributed management solution.

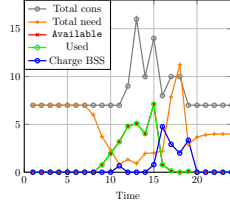


Figure 4: Optimal distributed solution with updated **K2**.

management since it leads to better allocation. Consequently, consumers shift more loads at available energy periods leading to a good solution since the objective value of the centralized optimum solution is 111.16 kWh. However, there is a need to incentive storage if the energy to be shared is important. Indeed, since the prosumers maximize their profit, they inject more at periods where the prices lead to a maximum profit. This results in too much injection than required at certain periods. For example, if we increase the total production $\sum_{i \in N} P_{ih}^{\text{Gen}}$ for $h \in H$ by 50%, the glutton algorithm leads to a solution with 79.34 kWh versus 64.02 kWh the optimal centralized solution's objective value, which is an increase of 24%. The remaining energy F^{rest} is presented by Figure 5. We notice a lot of green energy available in periods 10 to 17 while no energy is needed in the whole community (the opposite situation occurs after period 17). That is due to the lack of global perception of the community's state for prosumers. CC could have incentive members owning batteries to store energy during periods 10 to 17 for ulterior use.

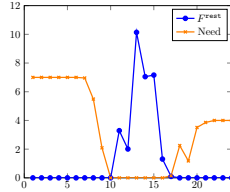


Figure 5: Storage requirement illustration.

4.2 Storage control

As shown in Figure 5, there is a need to incentivize the prosumers owing a BSS to store energy at certain periods. We express this incentive as a limitation of the periodic injection of these members. Indeed, if they cannot inject, they will store for the next periods. We introduce constraint (14) to achieve it. Then, at each iteration, CC calculates ρ_{ih} for $i \in N, h \in H$. In this paper, we set δ_i proportional to the size of member $i \in N$ compared to the other generating members who own the BSS. Each member i owing a BSS has an initial $\delta_i = 1$ kWh. Suppose member i' produces twice as much as the other members, $\delta_{i'} = 2$ kWh. Three members own the BSS, namely members 1, 2, and 3, according to the previous

affirmation $\delta = [2, 1, 1, 0, 0, 0, 0]$. We set the local scheduling time limit to 50 seconds for each member at each iteration.



(a) Before storage control: objective is 79.37 kWh, energy injected into MG is 31.10 kWh.

(b) After storage control: objective 68.13 kWh, energy injected into MG is 14.65 kWh.

Figure 6: Storage control's impact.

Since each member maximizes the profit, without injection limitation, the prosumers will directly inject their surplus. That leads to important energy injected into the main grid (the area between the red and green curves, which corresponds to the curve F^{rest} respectively in Figures 6a and 6b). Limiting prosumers owing BSS makes these members stock to reinject at other times, which allows having better solutions, as displayed on Figure 6b.

4.3 Test on real data

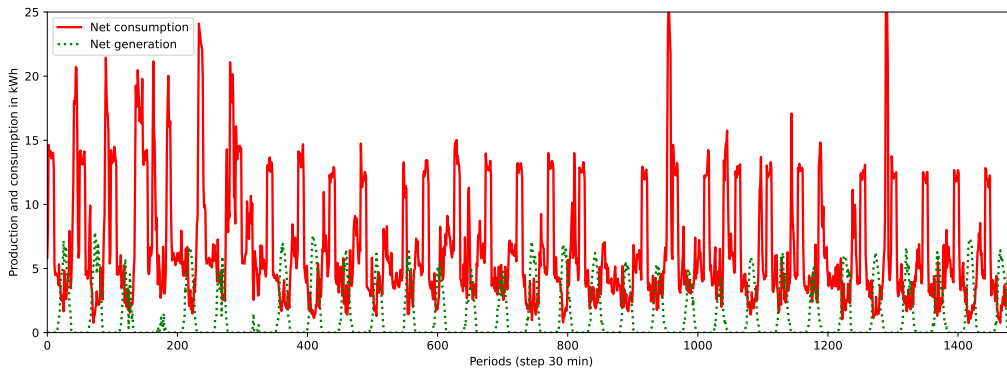
This section presents numerical results using accurate historical data collected from Smart Lou Quila's demonstrator. Since we do not know the actual load classification, we assume each member's loads belong to the type C, i.e., no consumption modulation is expected. We compare the a priori and a posteriori management and the keys. In the a posteriori case, the member n solves the problem with all scheduling variables fixed except C_{ih} , F_{nh}^{out} and F_{nh}^{in} for $n \in N, h \in H$. In the a priori management, the variables related to storage are not fixed in addition to these previous variables.

We collect the generation and load data for one month, specifically, February 2023 for winter and August 2021 for summer. Figure 7a presents the community's cumulative load and generation for the summer instance. The data are collected every 30 minutes over the horizons, respectively, 1344 and 1488 periods for february 2023 and august 2021. Each local problem is solve with a time limit `time_limit = 50` seconds at each iteration.

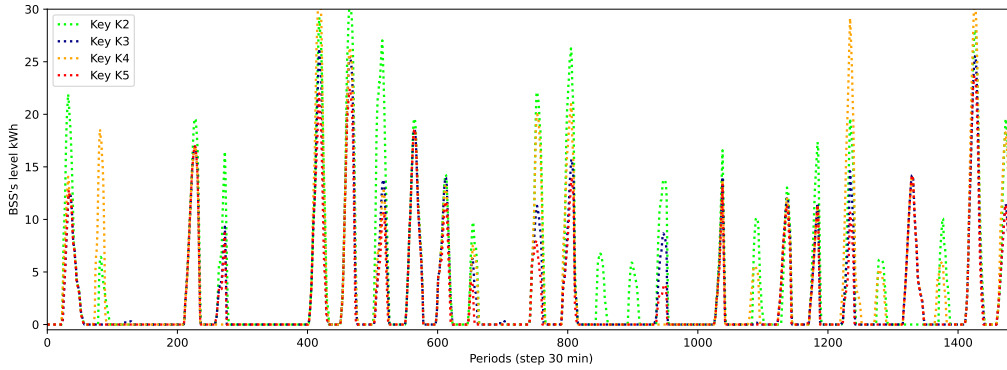
- **A posteriori comparison.** Here, we consider only the summer instance since it is the one that allows a clear a posteriori comparison; the prosumers inject more. For this instance, the community draws 4677.11 kWh from the main grid and injects 846.11 kWh into it if the members do not exchange the energy. Notice that a distributed solution is optimal if all members optimally solve their local problem at each iteration. If members exchange energy, the optimal distributed solution using key **K1** leads the community to collect 4240.87 kWh from the main grid, and 48.4% of the injection (846.11 kWh) is not locally consumed. Key **K2** returns an optimal solution of 4194.44 kWh drawn from MG, and 43% of the surplus goes to the main network. In the same line we obtain an optimal solution of 4209.16 kWh using key **K3**, 45% of the surplus is injected into the main grid. Finally, the keys **K4** and **K5** lead respectively to 4198.39 and 4369.30 collected from the main grid, respectively 43.4% and 63.6% of the surplus goes to the main grid.
- **A priori comparison.** For the winter instance, using key **K1**, the community collects 7474.9 kWh. The total injection of the community is 182.8 kWh, of which 25.3% is injected into the main grid mainly because the energy allocated to some members was not consumed. Updated **K2** increases collective self-consumption, and only 0.13% of the local generation goes to the main grid. Key **K3**, which improves key **K1** by allocating energy only to members who need it leads to 7453.78 kWh and 13.19% of the available energy injected into the main grid. For the summer instance, if the prosumers do not exchange their surplus in the local community, a total of 4560 kWh is collected from the main grid, and 714.77 kWh are injected into the main grid by the prosumers over the month. If members exchange their surplus, the optimal centralized solution leads to 3867.88 kWh collected from MG. For distributed management, on the one hand, using key **K1**, the community

collects 4153.15 kWh for the main grid. On the other hand, the members inject 714.77 kWh of their energy generation over the month, and 42.45% of this amount goes to the main grid. On the other hand, the community collects 4063.07 kWh from MG using updated **K2**, and 28.7% of injection goes to the main grid during summer. Key **K3** leads to 4133.72 kWh collected from the main grid, and 39.73% of the energy available goes to the main grid. In the line keys **K4** and **K5** lead respectively to 4079.66 and 4234.52 kWh collected from the main grid and 31.6% and 53% of the injection goes respectively to the main grid. Finally, limiting the BSS owners' injection using key **K2** leads to 4062.85 kWh collected from MG while members inject 707.67 kWh from which 28.11% goes to the main grid.

Key **K2** returns better solutions because it allows, on the one hand, a better surplus allocation. On the other hand, it allows storage for ulterior usage. Indeed, keys **K1**, **K3** and **K4** are related to the individual consumption level and **K5** is not related to the operations. In opposition, **K2** shares the surplus between the candidates uniformly, if a member i owning a BSS receives at period h an amount f_{ih} greater than her consumption, i.e., $f_{ih} \geq C_{ih}$, she can store the excess for her ulterior usage (see Figure 7b). These BSS owners can store for the community only under CC signals on prices and injection limitations.



(a) Inputs



(b) Total BSSs' level

Figure 7: Summer instance.

Experience has shown that, unlike the conventional approach, proactive management can effectively establish DR in a community. However, its effectiveness depends on the surplus allocation rules. On the other hand, there is a conflict between equity and maximizing the rate of collective self-consumption for a priori management. We recall that equity in this work consists in prioritizing the member who consumes the least when sharing the energy surplus. In this case, the keys **K2**, **K4**, **K5** are not fair. However, **K2** is the best solution, as it allows storage for later consumption.

Notice that we do not address the pricing issue in this work, i.e., we do not consider how prices \tilde{v}_h^{Com} and v_h^{Com} for $h \in H$ are set. CC determines these prices for the Smart Lou Quila scheme. The aim

is to maximize local consumption of locally produced energy correlated to CC's margin. Therefore, the exchange prices in the community must be more attractive, i.e., the selling in the community must be higher than the price at which the aggregator takes the excess, and the buying prices in the community must be lower than the buying price from MG. That is why we use the following prices in euros per kWh:

$$\begin{aligned} v_h^{\text{MG}} = v_h^{\text{GES}} &= 0.1685, \tilde{v}_h^{\text{GES}} = 0.065 \\ v_h^{\text{Com}} &= 0.1400, \tilde{v}_h^{\text{Com}} = 0.12. \end{aligned}$$

where \tilde{v}^{GES} is the price of selling the surplus to the aggregator. These prices must also be sufficient to amortize the marginal cost of using the BSS if we limit the injections.

5 Conclusion

In this paper, we present a parallel and distributed management method for large energy communities, which leads to some reasonable solutions compared to centralized solutions. Furthermore, we introduce an efficient allocation key for a priori management, which leads to a solution at 5.2% from the optimal centralized solution on real world data. We finally emphasize the conflict between fair surplus allocation and the high self-consumption rate that rises for certain definitions of fairness.

Some critical perspectives of this work are electric mobility and grid services. Concerning mobility, for example, we would like to charge the community's electric vehicles with the quantities injected at the aggregator, considering the travel schedule. As for grid services, we can imagine a form of collaboration between CC and the main grid, which would enable the community to supply neighboring households or communities, depending on the state of the overall grid. Finally, the system includes uncertainty at several levels; we have handled the deterministic case for simplicity's sake. Future work may consider them.

References

- [1] Anonymous. Scala graduum caloris. calorum descriptiones & signa. *Philosophical Transactions*, 22:824–829, 1701.
- [2] Bo Chen, Jianhui Wang, Xiaonan Lu, Chen Chen, and Shijia Zhao. Networked microgrids for grid resilience, robustness, and efficiency: A review. *IEEE Transactions on Smart Grid*, 12(1):18–32, 2020.
- [3] European Commission. Clean energy for all europeans package. <https://ec.europa.eu/energy/topics/energy-strategy/clean-energy-all-europeans>, (accessed: 27.03.2023).
- [4] European Commission. Renewable energy directive. <https://energy.ec.europa.eu/topics/renewable-energy/renewableenergydirectivetargetsandrules/renewableenergydirective>, (accessed: 27.03.2023).
- [5] S. Conti, R. Nicolosi, S. A. Rizzo, and H. H. Zeineldin. Optimal dispatching of distributed generators and storage systems for mv islanded microgrids. *IEEE Transactions on Power Delivery*, 27(3):1243–1251, 2012.
- [6] Pengfei Du, Li Ran, Daosen Zhai, Ruiling Ren, and Qi Zeng. Admm-based distributed online algorithm for energy management in hybrid energy powered cellular networks. *IEEE Access*, 7:83343–83353, 2019.
- [7] Davide Fioriti, Antonio Frangioni, and Davide Poli. Optimal sizing of energy communities with fair revenue sharing and exit clauses: Value, role and business model of aggregators and users. *Applied Energy*, 299:117328, 2021.
- [8] Matteo Fischetti, Ivana Ljubic, Michele Monaci, and Markus Sinnl. A new general-purpose algorithm for mixed-integer bilevel linear programs. *Oper. Res.*, 65(6):1615–1637, 2017.
- [9] Matteo Fischetti, Ivana Ljubić, Michele Monaci, and Markus Sinnl. On the use of intersection cuts for bilevel optimization. *Mathematical Programming*, pages 1–27, September 2017.

- [10] France. Code de l'énergie: L'autoconsommation (articles l315-1 à l315-8). https://www.legifrance.gouv.fr/codes/section_lc/LEGITEXT000023983208/LEGISCTA000032939883/. (Online; accessed: 27.03.2023).
- [11] France. Décret n° 2017-676 du 28 avril 2017 relatif à l'autoconsommation d'électricité et modifiant les articles d. 314-15 et d. 314-23 à d. 314-25 du code de l'énergie. <https://www.legifrance.gouv.fr/jorf/id/JORFTEXT000034517272>. (Online; accessed: 27.03.2023).
- [12] Jie Gao, Mushu Li, Peter He, and Lian Zhao. Incentive for distributed optimization in multi-user network: A study of two scenarios. In *2017 IEEE 86th Vehicular Technology Conference (VTC-Fall)*, pages 1–5, 2017.
- [13] Gabriela Hug, Soumya Kar, and Chenye Wu. Consensus + innovations approach for distributed multiagent coordination in a microgrid. *IEEE Transactions on Smart Grid*, 6(4):1893–1903, 2015.
- [14] Matthew Joseph, Michael Kearns, Jamie H Morgenstern, and Aaron Roth. Fairness in learning: Classic and contextual bandits. In D. Lee, M. Sugiyama, U. Luxburg, I. Guyon, and R. Garnett, editors, *Advances in Neural Information Processing Systems*, volume 29. Curran Associates, Inc., 2016.
- [15] Soumya Kar and Gabriela Hug. Distributed robust economic dispatch in power systems: A consensus + innovations approach. In *2012 IEEE Power and Energy Society General Meeting*, pages 1–8, 2012.
- [16] Thomas Kleinert, Martine Labbé, Ivana Ljubic, and Martin Schmidt. A survey on mixed-integer programming techniques in bilevel optimization. *EURO J. Comput. Optim.*, 9:100007, 2021.
- [17] Mengmou Li. Generalized lagrange multiplier method and kkt conditions with an application to distributed optimization. *IEEE Transactions on Circuits and Systems II: Express Briefs*, 66(2):252–256, 2019.
- [18] Qiang Li, Yuexi Liao, Kunming Wu, Leiqi Zhang, Jiayang Lin, Minyou Chen, Josep M. Guerrero, and Derek Abbott. Parallel and distributed optimization method with constraint decomposition for energy management of microgrids. *IEEE Transactions on Smart Grid*, 12(6):4627–4640, 2021.
- [19] Stefano Lilla, Camilo Orozco, Alberto Borghetti, Fabio Napolitano, and Fabio Tossani. Day-ahead scheduling of a local energy community: An alternating direction method of multipliers approach. *IEEE Transactions on Power Systems*, 35(2):1132–1142, 2020.
- [20] Yun Liu, Hoay Beng Gooi, and Huanhai Xin. Distributed energy management for the multi-microgrid system based on admm. In *2017 IEEE Power & Energy Society General Meeting*, pages 1–5, 2017.
- [21] Daniel K Molzahn, Florian Dörfler, Henrik Sandberg, Steven H Low, Sambuddha Chakrabarti, Ross Baldick, and Javad Lavaei. A survey of distributed optimization and control algorithms for electric power systems. *IEEE Transactions on Smart Grid*, 8(6):2941–2962, 2017.
- [22] Stefano Moret, Frédéric Babonneau, Michel Bierlaire, and François Maréchal. Decision support for strategic energy planning: A robust optimization framework. *Eur. J. Oper. Res.*, 280(2):539–554, 2020.
- [23] Voir plus. Smart lou quila : la première communauté énergétique de la start-up beoga. <https://voir-plus.com/2021/05/26/smart-lou-quila-la-premiere-communaute-energetique-de-la-start-up-beoga/>.
- [24] PUCA. Émergence de l'autoconsommation collective d'électricité en france : modèles et perspectives. https://www.urbanisme-puca.gouv.fr/IMG/pdf/rapport_final_vf.pdf.
- [25] Anthony Roy, Jean-Christophe Olivier, François Auger, Bruno Auvity, Salvy Bourguet, and Emmanuel Schaeffer. A comparison of energy allocation rules for a collective self-consumption operation in an industrial multi-energy microgrid. *Journal of Cleaner Production*, 389:136001, 2023.

- [26] Mariam Sangaré, Eric Bourreau, Bernard Fortz, Amaury Pachurka, and Michael Poss. Loads scheduling for demand response in energy communities. *Computers & Operations Research*, 160:106358, 2023.
- [27] Sajad Aliakbari Sani, Olivier Bahn, and Erick Delage. Affine decision rule approximation to address demand response uncertainty in smart grids’ capacity planning. *Eur. J. Oper. Res.*, 303(1):438–455, 2022.
- [28] Nripsuta Ani Saxena, Karen Huang, Evan DeFilippis, Goran Radanovic, David C Parkes, and Yang Liu. How do fairness definitions fare? examining public attitudes towards algorithmic definitions of fairness. In *Proceedings of the 2019 AAAI/ACM Conference on AI, Ethics, and Society*, pages 99–106, 2019.
- [29] Miadreza Shafie-Khah and Pierluigi Siano. A stochastic home energy management system considering satisfaction cost and response fatigue. *IEEE Transactions on Industrial Informatics*, 14(2):629–638, 2018.
- [30] Gulai Shen, Zachary E. Lee, Ali Amadeh, and K. Max Zhang. A data-driven electric water heater scheduling and control system. *Energy and Buildings*, 242:110924, 2021.
- [31] Matthieu Stephant, Dhaker Abbes, Kahina Hassam-Ouari, Antoine Labrunie, and Benoît Robyns. Distributed optimization of energy profiles to improve photovoltaic self-consumption on a local energy community. *Simulation Modelling Practice and Theory*, 108:102242, 2021.
- [32] Philipp Ströhle and Christoph M Flath. Local matching of flexible load in smart grids. *European Journal of Operational Research*, 253(3):811–824, 2016.
- [33] Antonis G. Tsikalakis and Nikos D. Hatziargyriou. Centralized control for optimizing microgrids operation. *IEEE Transactions on Energy Conversion*, 23(1):241–248, 2008.
- [34] Wim van Ackooij, Jérôme De Boeck, Boris Detienne, Stefania Pan, and Michael Poss. Optimizing power generation in the presence of micro-grids. *Eur. J. Oper. Res.*, 271(2):450–461, 2018.
- [35] Kunming Wu, Qiang Li, Jiayang Lin, Yongli Yi, Ziyu Chen, and Minyou Chen. Fast distributed lagrange dual method based on accelerated gradients for economic dispatch of microgrids. *Energy Reports*, 6:640–648, 2020. 2020 The 7th International Conference on Power and Energy Systems Engineering.
- [36] Yuekuan Zhou and Peter D. Lund. Peer-to-peer energy sharing and trading of renewable energy in smart communities trading pricing models, decision-making and agent-based collaboration. *Renewable Energy*, 207:177–193, 2023.