



HAL
open science

Rb₂Ti₂O₅: Superionic conductor with colossal dielectric constant

Rémi Federicci, Stéphane Holé, Aurelian Florin Popa, Luc Brohan, Benoît Baptiste, Silvana Merccone, Brigitte Leridon

► To cite this version:

Rémi Federicci, Stéphane Holé, Aurelian Florin Popa, Luc Brohan, Benoît Baptiste, et al.. Rb₂Ti₂O₅: Superionic conductor with colossal dielectric constant. *Physical Review Materials*, 2017, 1 (3), pp.032001. 10.1103/PhysRevMaterials.1.032001 . hal-04188652

HAL Id: hal-04188652

<https://hal.science/hal-04188652>

Submitted on 26 Aug 2023

HAL is a multi-disciplinary open access archive for the deposit and dissemination of scientific research documents, whether they are published or not. The documents may come from teaching and research institutions in France or abroad, or from public or private research centers.

L'archive ouverte pluridisciplinaire **HAL**, est destinée au dépôt et à la diffusion de documents scientifiques de niveau recherche, publiés ou non, émanant des établissements d'enseignement et de recherche français ou étrangers, des laboratoires publics ou privés.



HAL
open science

Rb₂Ti₂O₅: Superionic conductor with colossal dielectric constant

Rémi Federicci, Stéphane Holé, Aurelian Florin Popa, Luc Brohan, Benoît Baptiste, Silvana Mercone, Brigitte C. Leridon

► **To cite this version:**

Rémi Federicci, Stéphane Holé, Aurelian Florin Popa, Luc Brohan, Benoît Baptiste, et al.. Rb₂Ti₂O₅: Superionic conductor with colossal dielectric constant. *Physical Review Materials*, 2017, 1 (3), 10.1103/PhysRevMaterials.1.032001 . hal-01705365

HAL Id: hal-01705365

<https://hal.science/hal-01705365>

Submitted on 11 Oct 2021

HAL is a multi-disciplinary open access archive for the deposit and dissemination of scientific research documents, whether they are published or not. The documents may come from teaching and research institutions in France or abroad, or from public or private research centers.

L'archive ouverte pluridisciplinaire **HAL**, est destinée au dépôt et à la diffusion de documents scientifiques de niveau recherche, publiés ou non, émanant des établissements d'enseignement et de recherche français ou étrangers, des laboratoires publics ou privés.



Rb₂Ti₂O₅: Superionic conductor with colossal dielectric constant

Rémi Federicci,¹ Stéphane Holé,¹ Aurelian Florin Popa,² Luc Brohan,² Benoît Baptiste,³
Silvana Mercone,^{4,1} and Brigitte Leridon^{1,*}

¹LPEM-ESPCI Paris, PSL Research University, CNRS, Sorbonne Universités, UPMC, 10 rue Vauquelin, F-75005 Paris, France

²Institut des Matériaux Jean Rouxel (IMN), Université de Nantes, CNRS, 2 rue de la Houssinière, BP 32229, F-44322 Nantes Cedex 3, France

³IMPMC, Sorbonne Universités UPMC, CNRS, 4 Place Jussieu, F-75005 Paris, France

⁴Université Paris 13, Sorbonne Paris Cité, LSPM, CNRS, 99 Avenue J.-B. Clément, F-93430 Villetaneuse, France

(Received 7 June 2016; published 30 August 2017)

Electrical conductivity and high dielectric constant are in principle self-excluding, which makes the terms insulator and dielectric usually synonymous. This is certainly true when the electrical carriers are electrons, but not necessarily in a material where ions are extremely mobile, electronic conduction is negligible, and the charge transfer at the interface is immaterial. Here we demonstrate in a perovskite-derived structure containing five-coordinated Ti atoms, a colossal dielectric constant (up to 10^9) together with very high ionic conduction 10^{-3} S cm⁻¹ at room temperature. Coupled investigations of I - V and dielectric constant behavior allow us to demonstrate that, due to ion migration and accumulation, this material behaves like a giant dipole, exhibiting colossal electrical polarization (of the order of 0.1 C cm⁻²). Therefore it may be considered as a “ferro-ionet” and is extremely promising in terms of applications.

DOI: 10.1103/PhysRevMaterials.1.032001

The perovskite structure was initially discovered in CaTiO₃ by Gustav Rose in 1839 and named after the famous mineralogist Lev Perovski. Ever since then, perovskites, as well as their derived structures, have demonstrated outstanding properties. These span, for instance, from ferroelectricity and piezoelectricity in BaTiO₃ and in Pb(Zr_xTi_{1-x})O₃ [1–4], to unrivaled high critical temperature for superconductivity in the cuprates [5,6], and include also colossal magnetoresistance in the manganites [7]. Among the derived structures from perovskites, the $M_2Ti_2O_5$ family (with M an alkaline element) constitutes a peculiar class of materials. As a matter of fact, the titanium atoms in these materials are of five-coordination, which initially raised the question of their structure and chemical stability in the 1960s [8,9], and the structure is lamellar, with planes of pyramids separated by the alkaline elements. We present here the first electrical study of Rb₂Ti₂O₅ and demonstrate extremely unusual and interesting properties. In particular, we show that when oxygen vacancies are created in the material, the dielectric constant and the electrical polarization reach unprecedented values such as 10^9 and 0.1 C cm⁻², respectively, which we attribute to high ionic conduction of the order of 10^{-3} S cm⁻¹, together with extremely low electronic conductivity (lower than 10^{-8} S cm⁻¹). These two combined properties make the material simultaneously a superionic conductor and an extremely good dielectric, promoting this material as an ideal candidate for applications, especially in supercapacitors.

$M_2Ti_2O_5$ samples. Crystals of $M_2Ti_2O_5$ were synthesized using the technique described in the Supplemental Material [11]. The crystals take the shape of long transparent needles of typical length about 1 mm. In Fig. 1 is displayed the atomic structure of $M_2Ti_2O_5$. This structure was known to be $C2/m$ for $M = K$ [8,9], and we have shown through x-ray diffraction (XRD) experiments presented in the Supplemental Material

[11] that it is also the case for $M = Rb$. For the electrical measurements, we mostly focused on Rb₂Ti₂O₅ samples.

Electrical measurements: I - V curves. Several crystals of Rb₂Ti₂O₅ of typical dimensions $200\ \mu\text{m} \times 400\ \mu\text{m} \times 1\ \text{mm}$ were isolated and contacted using silver wire two-probe contacts glued with carbon paint. (See the photograph in Fig. 1 in the Supplemental Material [11].) Typical contact areas were about 0.1 mm². Other types of contacts and electrodes were experimented with, and all gave similar results. (See the corresponding paragraphs in the Supplemental Material [11].)

The electrical resistivity of the as-grown Rb₂Ti₂O₅ crystals was found to be extremely high (typically above $10^8\ \Omega\ \text{cm}$). However, after annealing under helium atmosphere at 400 K for a couple of hours, the resistance at 300 K went down by at least 4 orders of magnitude. We hereafter refer to this process as “activation” of the material and will discuss later a possible interpretation. The material could be subsequently “deactivated” by annealing under oxygen atmosphere, which tends to indicate that the mechanisms at play are redox processes.

In Fig. 2 is displayed the I - V curve of an “activated” single crystal at 260 K, for an oscillation frequency of the applied voltage of 1.2 mHz. This hysteresis curve is typical of what is found in the 200–330 K temperature range, although the current is maximal at 260 K. Outside this temperature range, by contrast, the I - V curve is typical of a simple small capacitance in parallel with a high resistance corresponding to a resistivity value of about 10^8 – $10^9\ \Omega\ \text{cm}$. (See Fig. 2 of the Supplemental Material [11].) Please note that the curve is *not self-crossing* and is odd with respect to voltage. The difference between σ_{ON} and σ_{OFF} , defined as indicated in Fig. 2, characterizes the current hysteresis.

The inset of Fig. 2 represents the polarization, calculated by integrating over time the measured current and dividing by the area of the contacts, as a function of the applied voltage. Such cycles are indeed evocative of a ferroelectric behavior. The colossal value of this polarization, of about 0.2 C cm⁻², is noteworthy. For the whole set of measured samples, the

*Corresponding author: brigitte.leridon@espci.fr

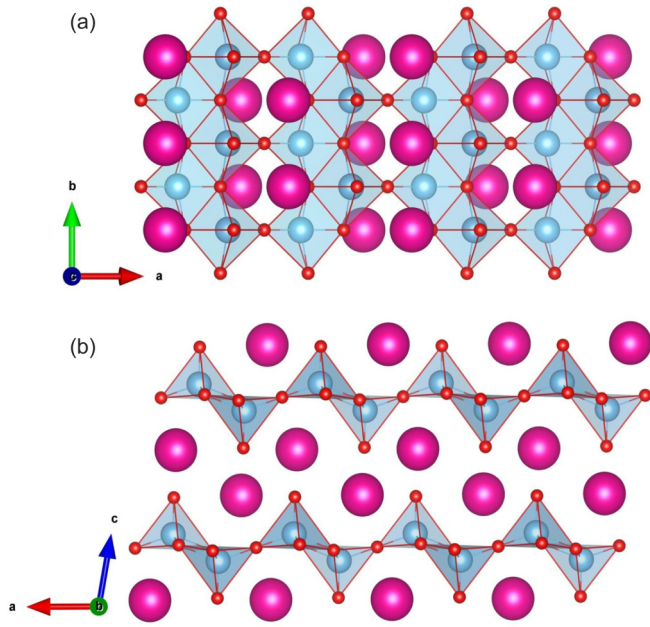


FIG. 1. Crystal structure of $M_2Ti_2O_5$, visualized using VESTA [10] software. (a) View along the c axis. (b) View along the b axis, evidencing the lamellar structure. The $(Ti_2O_5)^{2-}$ planes are composed of staggered upside and downside oxygen pyramids that share either a vertex or an edge. The Ti atoms (in blue) are inside the oxygen pyramids (oxygen atoms are in red). These planes are separated by the $M = Rb$ or K atoms (in pink).

integrated charge was typically of the order of $100 \mu C$ and the corresponding polarization typically about $0.1 C cm^{-2}$.

Relevance of a structural transition. Since the I - V and P - V curves of Fig. 2 are strongly evocative of a ferroelectric response, the possible existence of structural transitions at around 330 and 200 K, which could explain the strong polarization of the system, was investigated. The powder X-ray diffractograms of $Rb_2Ti_2O_5$ at temperatures spanning from 100 to 400 K are displayed in Fig. 10 of the Supplemental Material [11], fully consistent with a $C2/m$ centrosymmetric structure and exhibiting no indication for a structural transition. The obtained lattice parameters are given in Table I of the Supplemental Material [11]. As a matter of fact, similar results were obtained for a sample activated by vacuum annealing or N_2 annealing at 400 K (see Fig. 11 in Supplemental Material [11]). These results allowed us to discard the possibility of a structural transition toward a conventional ferroelectric state for both as-grown and activated samples, at least to the level of precision of the XRD. (XRD data are not able to infer the presence of vacancies at the O sites.)

Permittivity measurements. The dielectric constant as a function of temperature and frequency was also investigated and the results are displayed in Fig. 3. The complex admittance of the sample was measured using a Solartron 1296 Dielectric interface and a Solartron 1260 impedance/gain phase analyzer, and the corresponding equivalent dielectric constant $\epsilon_r = \epsilon/\epsilon_0$ was extracted. In Fig. 3(a) the real part of the dielectric constant is plotted in logarithmic units. It increases by up to 6 orders of magnitude from high to low frequency between 200 and 320 K and reaches a value of more than 10^8 at 300 K at

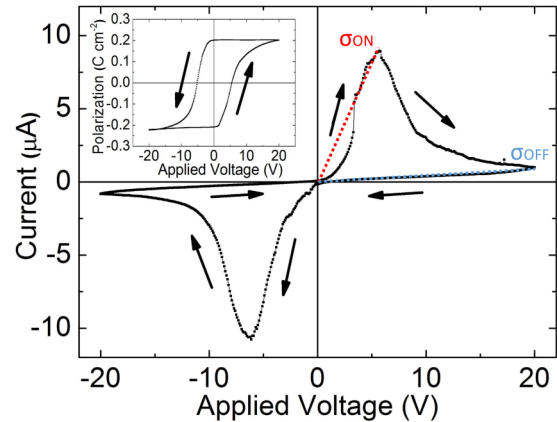


FIG. 2. Typical measured current versus applied voltage for a single crystal at 260 K (for a sawtooth voltage with $\omega = 1.2$ mHz). For this sample the crystal size is about $200 \mu m \times 400 \mu m \times 1000 \mu m$. The peak current density is about $10 mA cm^{-2}$. Inset: Corresponding polarization versus applied voltage. Note the colossal value of the polarization. For a typical sample, the integrated charge is of the order of $100 \mu C$, which divided by the contact area gives a density of polarization of the order of $0.1 C cm^{-2}$.

0.01 Hz. The imaginary part of ϵ_r , displayed in Fig. 3(b), is found to follow a similar behavior. In Fig. 3(c) are plotted the real and imaginary parts of ϵ_r as a function of frequency for three different temperature values. While the curves are featureless at 170 and 400 K, the curves at 300 K exhibit two distinct regimes separated by a cutoff frequency ω_C of about 10 Hz.

Remarkably enough, below this cutoff frequency, the imaginary and real parts of the dielectric constant seem to converge to the same frequency behavior approximately following $1/\sqrt{\omega}$ [see Fig. 3(c)]. This observation is typical of ionic diffusion processes as described by Warburg impedances [12] evolving as $Z_W \propto (1-j)/\sqrt{\omega}$ in the case of an ideal semi-infinite system with a perfectly flat electrode interface. It is related to the presence of a diffusion layer in the system, whose thickness increases when ω decreases. Therefore this Warburg element points toward an electrolyte nature for the material. Figure 3(d), displaying Cole-Cole [13,14] plots acquired at 260 and 300 K, gives a better picture of the diffusion mechanism. Below 5–10 Hz the linear relation typical of the ionic diffusion is clearly evidenced through the existence of a constant phase element.

These results were reproduced for many different single crystals and polycrystals of $Rb_2Ti_2O_{5-\delta}$ (see the Supplemental Material [11]) and were also observed in $K_2Ti_2O_{5-\delta}$, although most of the study was performed on $Rb_2Ti_2O_{5-\delta}$. Here δ refers to the reduction process occurring during the annealing. Its value depends on the annealing conditions, and systematic measurements of δ will be the object of another study. For as-grown samples or samples annealed at 400 K under oxygen atmosphere, the effects are strongly reduced and the sample is equivalent to a capacitor with a parallel resistance of very high resistivity larger than $\sim 10^9 \Omega cm$. (See the corresponding maps for oxygen-annealed crystals in Fig. 4 of the Supplemental Material [11].)

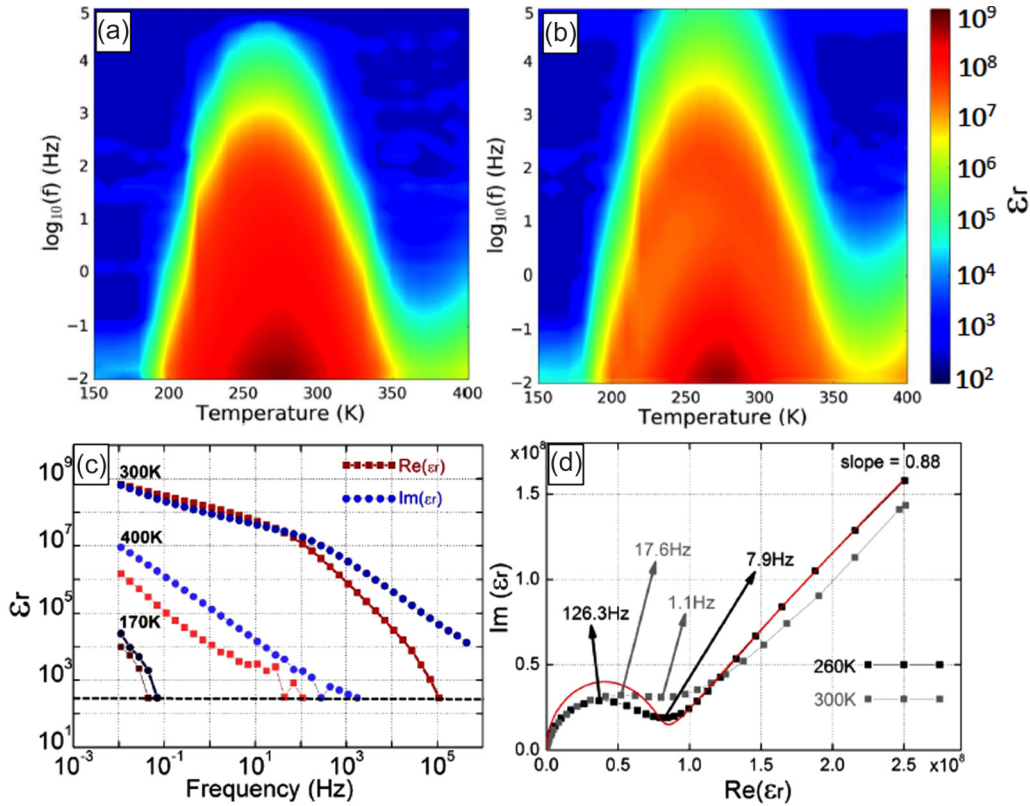


FIG. 3. Top: Dielectric constant of a helium-annealed monocrystalline sample. (a) $\text{Re}(\epsilon_r)$ and (b) $\text{Im}(\epsilon_r)$ as a function of temperature and frequency with $V_{AC} = 100$ mV. Bottom: (c) $\text{Re}(\epsilon_r)$ (red squares) and $\text{Im}(\epsilon_r)$ (blue dots) curves vs frequency for the corresponding temperatures: 170, 300, and 400 K. The dotted line represents the measurement threshold. (d) Cole-Cole plot of the permittivity at 300 K [corresponding to the upper curves in (c)], exhibiting a linear part with a slope of about 0.9. Red line: Electrical model pictured in Fig. 4(a), with parameters $R_l = 3 \times 10^5 \Omega$, $C_{\max} = 1.5 \times 10^{-6}$ F, $C_w = 30.7 \times 10^{-9}$ F, $W = 5 \times 10^7 \text{ F s}^{-1/2}$. The fact that the slope of the line is close to 1, and that $\text{Re}(\epsilon_r)$ and $\text{Im}(\epsilon_r)$ tend to $1/\omega^{1/2}$ variation at low frequency, points toward a Warburg-type impedance, characteristic of a diffusion process.

In Fig. 4(a) is displayed another permittivity curve obtained under ambient atmosphere as a function of frequency. In this case, the “Warburg” impedance element is slightly modified and a saturation effect for $\text{Re}(\epsilon_r)$ appears at low frequency. The curves indeed exhibit three distinct regimes: the saturation at

low frequency, the Warburg regime with slope $-1/2$, and a conduction regime where $\text{Im}(\epsilon_r)$ has a slope -1 with $\log(f)$.

We are then able to propose an equivalent electrical model for the samples, which is pictured in the inset of Fig. 4(a). In this equivalent circuit model, C_{\max} is the maximal capacitance

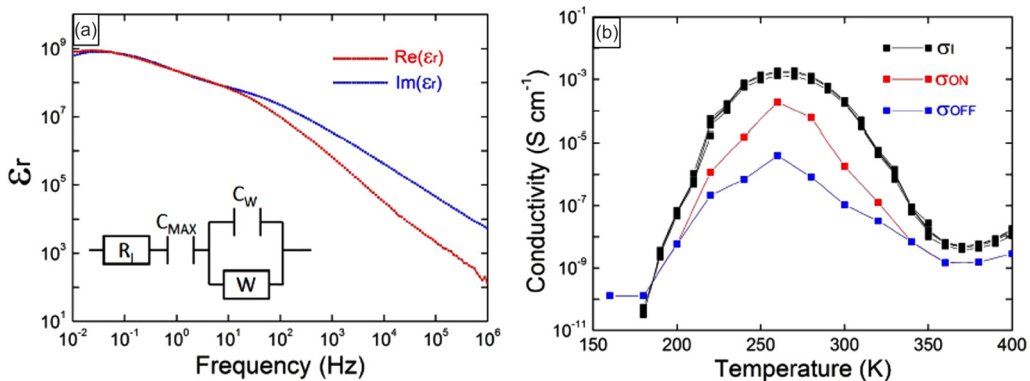


FIG. 4. (a) Real and imaginary parts of the relative permittivity $\epsilon_r = \epsilon/\epsilon_0$ as function of frequency at 300 K under ambient pressure and temperature conditions. $\text{Re}(\epsilon_r)$ shows a saturation at low frequency corresponding to accumulation of ionic species on the edges of the sample. Inset: Equivalent electrical model for the samples, accounting for the Cole-Cole plots of Fig. 3(d). (b) Ionic conductivity σ_I extracted from the high-frequency value of $\text{Re}(\epsilon)$ plotted as a function of temperature. σ_{ON} and σ_{OFF} are extracted from the I - V curves as shown in Fig. 2. The difference between σ_{ON} and σ_{OFF} characterizes the existence of the ferroelectric-like cycles and the figure evidences the strong correlation between the existence of the hysteretic cycles and the ionic conductivity.

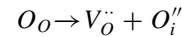
that can be attained by the sample. This corresponds to the maximum of dielectric constant $\epsilon_r \approx 10^9$ and describes a microscopic situation where all the negative ionic species are stacked at one edge of the crystal and the positive ionic species at the opposite edge. The polarization is then maximal. This is attained at extremely low frequency and for sufficient value of the electric field, where the crystal behaves like a double-layer supercapacitor. The second capacitance C_W in parallel with the Warburg impedance element determines, together with R_I , the cutoff frequency $\omega_C = 1/R_I C_W$ that separates the Warburg regime, where the diffusion layer is experienced by the system, from the regime of freely moving ions characterized by the resistivity R_I at high frequency, when edge effects are not relevant anymore. This electrical model accounts reasonably well for the Cole-Cole plot of Fig. 2(d). The conductivity $\sigma_I = R_I^{-1}$ is plotted in Fig. 4(b) together with σ_{ON} and σ_{OFF} extracted from the I - V curves as a function of temperature. The excellent agreement between these values allows one to establish, without any doubt, that the origin of the hysteretic cycles and of the giant polarization is the presence of these extremely mobile ions.

Colossal permittivity due to ionic motion. The most salient feature of this new material is its colossal dielectric constant (up to 10^9 at low frequency under ambient atmosphere). This observation is corroborated by independent measurement of the electrical polarization through the I - V data, which is also remarkably high and quantitatively consistent with the dielectric constant values.

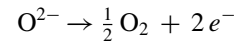
This anomalously high value of the polarization suggests the existence of a macroscopic dipole in the sample. This dipole is shown to be related to ion displacements in the material, as ion diffusion is attested by the presence of a Warburg element as explained above. It is established that this dipole is maximal between 200 and 320 K, precisely in the range where the ionic conductivity extracted from the equivalent permittivity measurements is maximal. This macroscopic dipole can only exist provided the electrodes are ion blocking. This has to be the case, since for any combination of electrodes, the presence of a giant moment and a Warburg element is observed. This Warburg element corresponds to the local accumulation of charges that build up an electric field, which corrects the external field. If the electrodes were not ion blocking, such a charge accumulation could not occur. In addition, for evaporated gold electrodes that are specifically ion-blocking, the same results are obtained. (See Fig. 6 in the Supplemental Material [11].) Another condition for the observation of such a high dielectric constant is that at least two ionic species of opposite signs are involved in the process. If only one were at play, the high capacity would be in series with a low capacity, which would be detrimental to ϵ_r . This may explain, indeed, why this material is the first ionic conductor where such a high dielectric constant is reported.

The fact that annealing under oxygen-depleted atmosphere strongly enhances the polarization and the dielectric constant and annealing under oxygen strongly decreases it (see Fig. 4 in Supplemental Material [11]) points toward the role of oxygen vacancies. The presence of O vacancies is also highly suspected since reversible color changes are observed with annealing [15]. (See the last paragraph in the Supplemental Material [11].) In this case, a possible mechanism could be the creation

of a Frenkel anionic defect or (using the Kröger-Vink notation)



where one oxygen atom gives one vacancy and one interstitial oxygen ion O^{2-} . This mechanism is thermally activated and the oxygen-poor atmosphere favors the evaporation of oxygen. In this case, when escaping the sample, the O^{2-} should leave behind negative charges:



When the material is annealed under oxygen atmosphere, then the reverse processes should take place.

Natural candidates for the migrating ions are therefore the oxygen ions and/or vacancies, but further work has to be carried out in order to decipher the exact nature of these ions. As a matter of fact, we cannot discard any possible contamination by water vapor during even brief exposure to atmosphere. This would open the possibility for other mobile ionic species such as protons or hydroxide ions, etc... In any case, the mobility appears to be favored by the presence of oxygen vacancies, but it is also necessary to understand the mechanism for suppression of motion above 330 K.

Another titanate known for its high dielectric constant is $\text{CaCu}_3\text{Ti}_4\text{O}_{12}$ (CCTO) [16,17]. In this compound, a giant dielectric constant (about 10^3 – 10^5 , so still 4–5 orders of magnitude smaller) and “relaxorlike” behavior has been evidenced and attributed either to internal barrier effects [18] or to the presence of oxygen vacancies [19]. On the other hand, entropy-stabilized oxides have been shown to exhibit very high dielectric constant (10^4) [20] and superionic conduction [21]. However, in these previously discovered giant dielectric constant materials [16,17,20,22,23], the dielectric constant shows a conventional behavior without ionic diffusion processes such as Warburg elements.

The ionic conductivity σ_I extracted from the I - V measurements is of the order of $10^{-3} \text{ S cm}^{-1}$ at room temperature, which makes this material a superionic conductor. The electronic conductivity is estimated from the value of the resistance outside the temperature range where the material shows charge accumulation and is found to be lower than $10^{-9} \text{ S cm}^{-1}$. This extremely low electronic conductivity is consistent with band-structure calculations presented in Fig. 12 in the Supplemental Material [11] that show that the material is electronically insulating with a gap of 3.53 eV. This proves that the reduction process due to annealing has a negligible effect on the electronic doping, which is at odds with what is observed in other perovskites (see, e.g., [24] and references therein) or in memristive titanium oxide devices [25].

It is this combination of extremely small electronic conductivity and relatively high ionic conductivity that makes the system behave like a giant dipole. This also implies that charge transfer at the electrode interfaces is negligible; the carriers are confined in the sample and then accumulate at the edges.

Why is the reported colossal dielectric constant not universal to all superionic conductors? As a matter of fact, the dielectric constant of most solid electrolytes is usually not reported to be very high. For instance, sodium-beta-alumina has a dielectric constant along the c axis, which is the nonconductive direction, of about ~ 200 [26]. An explanation

may be that, in order to protect the colossal dielectric constant, the electronic conductivity needs to be extremely small (and the charge transfer at the interfaces immaterial). In most of the oxygen-conducting electrolytes, for instance, the presence of vacancies is generally known to dope the system and increase its electronic conductivity, which is detrimental to ϵ due to possible screening from the electrons or holes. Recent results on a polymer-based solid electrolyte report a very high dielectric constant [27], which could be explained by the above proposed mechanism, although no hysteretic behavior is reported to our knowledge. On the other hand, some titanium-based perovskites have been reported to be good oxygen conductors [28]. Another explanation could be that the mechanism has to imply at least two different ionic species with charges of opposite signs, as demonstrated above.

The remarkable properties of this material make it interesting for applications, in particular, for the realization of supercapacitors for energy storage [29,30]. Its high ionic conductivity and very low electronic conductivity are particularly interesting for its use as a solid electrolyte. The above-described properties were also observed on a ceramic, and work is in progress to characterize the ionic behavior in this material at the nanoscale [31].

Conclusion. We have demonstrated a colossal dielectric constant (up to 10^9 , so 2–3 orders of magnitude larger than the current state of the art in crystals) in a lamellar perovskite structure of chemical formula Rb₂Ti₂O_{5- δ} . Evidence has been provided that this material behaves like a ferroelectric

material in the temperature range 200–320 K, although its crystal structure does not belong to pyroelectric classes. The presence of Warburg impedance elements in the permittivity at low frequency points toward the existence of ionic diffusion processes. We provide an explanation in terms of a giant dipole created by ion migration inside the sample with the creation of a diffusion layer due to accumulation near the interfaces with the electrodes. A correlation between ionic conductivity and the polarizability character is demonstrated. This material may therefore be qualified as a “ferro-ionet” by analogy to ferro-electrets. It realizes at the same time a colossal dielectric constant at low frequency together with a high internal ionic conduction. These findings in a crystalline solid (single crystal or ceramic) open new possibilities in particular for the realization of solid electrolytes and supercapacitors.

Acknowledgments. This work was supported by French state funds managed by the Agence Nationale de la Recherche (ANR) within the Investissements d’Avenir program under reference ANR-11-IDEX-0004-02, and more specifically within the framework of the Cluster of Excellence MATISSE led by Sorbonne Universités. The project was also supported by the Région Ile-de-France through a SESAME grant. The authors acknowledge Hervé Arribart, Abhay Shukla, Paola Giura, and Fabio Finocchi for stimulating discussions, as well as Lise Marie Chamoreau at the diffraction facility (IPCM, UPMC) for her assistance during the single-crystal XRD measurements at low temperature and Gwenaëlle Rouse for her help regarding Rietveld refinements.

-
- [1] A. Von Hippel, R. G. Breckenridge, F. G. Chesley, and L. Tisza, High dielectric constant ceramics, *Ind. Eng. Chem.* **38**, 1097 (1946).
- [2] B. Wul and J. M. Goldman, Ferroelectric switching in BaTiO₃ ceramics, *C. R. Acad. Sci. USSR* **51**, 21 (1946).
- [3] B. Jaffe, W. R. Cook, and H. Jaffe, *Piezoelectric Ceramics* (Academic, New York, 1971).
- [4] R. E. Cohen, Origin of ferroelectricity in perovskite oxides, *Nature (London)* **358**, 136 (1992).
- [5] J. G. Bednorz and K. A. Müller, Possible high-T_c superconductivity in the Ba-La-Cu-O system, *Z. Phys. B: Condens. Matter* **64**, 189 (1986).
- [6] M. K. Wu, J. R. Ashburn, C. J. Torng, P. H. Hor, R. L. Meng, L. Gao, Z. J. Huang, Y. Q. Wang, and C. W. Chu, Superconductivity at 93 K in a New Mixed-Phase Y-Ba-Cu-O Compound System at Ambient Pressure, *Phys. Rev. Lett.* **58**, 908 (1987).
- [7] A. P. Ramirez, Review article: Colossal magnetoresistance, *J. Phys.: Condens. Matter* **9**, 8171 (1997).
- [8] S. Andersson and A. D. Wadsley, Five co-ordinated titanium in K₂Ti₂O₅, *Nature (London)* **187**, 499 (1960).
- [9] S. Andersson and A. D. Wadsley, The crystal structure of K₂Ti₂O₅, *Acta Chem. Scand.* **15**, 663 (1961).
- [10] K. Momma and F. Izumi, Vesta 3 for three-dimensional visualization of crystal, volumetric and morphology data, *J. Appl. Crystallogr.* **44**, 1272 (2011).
- [11] See Supplemental Material at <http://link.aps.org/supplemental/10.1103/PhysRevMaterials.1.032001> for additional detail about the electrical measurements, additional I/V and permittivity data and powder x-ray diffraction data.
- [12] E. Warburg, Ueber die spitzenentladung, *Ann. Phys. (Berlin, Ger.)* **303**, 493 (1899).
- [13] K. S. Cole and R. H. Cole, Dispersion and absorption in dielectrics, I. Alternating current characteristics, *J. Chem. Phys.* **9**, 341 (1941).
- [14] K. S. Cole, Dispersion and absorption in dielectrics, II. Direct current characteristics, *J. Chem. Phys.* **10**, 98 (1942).
- [15] T. Sekiya, K. Ichimura, M. Igarashi, and S. Kurita, Absorption spectra of anatase TiO₂ single crystals heat-treated under oxygen atmosphere, *J. Phys. Chem. Solids* **61**, 1237 (2000).
- [16] A. P. Ramirez, M. A. Subramanian, M. Gardel, G. Blumberg, D. Li, T. Vogt, and S. M. Shapiro, Giant dielectric constant response in a copper-titanate, *Solid State Commun.* **115**, 217 (2000).
- [17] C. C. Homes, T. Vogt, S. M. Shapiro, and S. Wakimoto, Optical response of high-dielectric-constant perovskite-related oxide, *Science* **293**, 673 (2001).
- [18] J. Li, A. W. Sleight, and M. A. Subramanian, Evidence for internal resistive barriers in a crystal of the giant dielectric constant material: CaCu₃Ti₄O₁₂, *Solid State Commun.* **135**, 260 (2005).
- [19] C.-C. Wang, M.-N. Zhang, K.-B. Xu, and G.-J. Wang, Origin of high-temperature relaxor-like behavior in CaCu₃Ti₄O₁₂, *J. Appl. Phys.* **112**, 034109 (2012).
- [20] D. Bérardan, S. Franger, D. Dragoe, A. K. Meena, and N. Dragoe, Colossal dielectric constant in high entropy oxides, *Phys. Status Solidi RRL* **10**, 328 (2016).
- [21] D. Bérardan, S. Franger, A. K. Meena, and N. Dragoe, Room temperature lithium superionic conductivity in high entropy oxides, *J. Mater. Chem. A* **4**, 9536 (2016).

- [22] J. Wu, C.-W. Nan, Y. Lin, and Y. Deng, Giant Dielectric Permittivity Observed in Li and Ti Doped NiO, *Phys. Rev. Lett.* **89**, 217601 (2002).
- [23] P. K. Larsen and R. Metselaar, Electric and dielectric properties of polycrystalline yttrium iron garnet: Space-charge-limited currents in an inhomogeneous solid, *Phys. Rev. B* **8**, 2016 (1973).
- [24] J. Biscaras, B. Leridon, D. Colson, A. Forget, and P. Monod, Direct evidence of interchange between hole doping and Curie paramagnetism in underdoped $\text{YBa}_2\text{Cu}_3\text{O}_x$, *Phys. Rev. B* **85**, 134517 (2012).
- [25] D. B. Strukov, G. S. Snider, D. R. Stewart, and R. S. Williams, The missing memristor found, *Nature (London)* **453**, 80 (2008).
- [26] B. N. Pal, B. M. Dhar, K. C. See, and H. E. Katz, Solution-deposited sodium beta-alumina gate dielectrics for low-voltage and transparent field-effect transistors, *Nat. Mater.* **8**, 898 (2009).
- [27] N. Srivastava and M. Kumar, Ion dynamics and relaxation behavior of NaPF_6 -doped polymer electrolyte systems, *J. Solid State Electrochem.* **20**, 1 (2016).
- [28] M. Li, M. J. Pietrowski, R. A. De Souza, H. Zhang, I. M. Reaney, S. N. Cook, J. A. Kilner, and D. C. Sinclair, A family of oxide ion conductors based on the ferroelectric perovskite $\text{Na}_{0.5}\text{Bi}_{0.5}\text{TiO}_3$, *Nat. Mater.* **13**, 31 (2013).
- [29] P. Simon and Y. Gogotsi, Materials for electrochemical capacitors, *Nat. Mater.* **7**, 845 (2008).
- [30] P. Simon, Y. Gogotsi, and B. Dunn, Where do batteries end and supercapacitors begin? *Science* **343**, 1210 (2014).
- [31] J. Maier, Nanoionics: Ion transport and electrochemical storage in confined systems, *Nat. Mater.* **4**, 805 (2005).