



**HAL**  
open science

## Classification of PRSS1 variants responsible for chronic pancreatitis: An expert perspective from the Franco-Chinese GREPAN Study Group

Emmanuelle Masson, Wen-Bin Zou, Na Pu, Vinciane Rebours, Emmanuelle Génin, Hao Wu, Jin-Huan Lin, Yuan-Chen Wang, Zhao-Shen Li, David Cooper, et al.

### ► To cite this version:

Emmanuelle Masson, Wen-Bin Zou, Na Pu, Vinciane Rebours, Emmanuelle Génin, et al.. Classification of PRSS1 variants responsible for chronic pancreatitis: An expert perspective from the Franco-Chinese GREPAN Study Group. *Pancreatology*, 2023, 23 (5), pp.491-506. 10.1016/j.pan.2023.04.004 . hal-04188275

**HAL Id: hal-04188275**

**<https://hal.science/hal-04188275>**

Submitted on 6 Nov 2023

**HAL** is a multi-disciplinary open access archive for the deposit and dissemination of scientific research documents, whether they are published or not. The documents may come from teaching and research institutions in France or abroad, or from public or private research centers.

L'archive ouverte pluridisciplinaire **HAL**, est destinée au dépôt et à la diffusion de documents scientifiques de niveau recherche, publiés ou non, émanant des établissements d'enseignement et de recherche français ou étrangers, des laboratoires publics ou privés.



Distributed under a Creative Commons Attribution - NonCommercial 4.0 International License

# Classification of *PRSSI* variants responsible for chronic pancreatitis: an expert perspective from the Franco-Chinese GREPAN Study Group

## Short title: Classification of *PRSSI* variants

Emmanuelle Masson,<sup>1,2,#</sup> Wen-Bin Zou,<sup>3,4,#</sup> Na Pu,<sup>1,5</sup> Vinciane Rebours,<sup>6</sup> Emmanuelle Génin,<sup>1,2</sup> Hao Wu,<sup>3,4</sup>  
Jin-Huan Lin,<sup>3,4</sup> Yuan-Chen Wang,<sup>3,4</sup> Franco-Chinese GREPAN Study Group,<sup>§</sup> Zhao-Shen Li,<sup>3,4</sup>  
David N. Cooper,<sup>7</sup> Claude Férec,<sup>1</sup> Zhuan Liao,<sup>3,4,\*</sup> Jian-Min Chen<sup>1,\*</sup>

<sup>1</sup>Univ Brest, Inserm, EFS, UMR 1078, GGB, F-29200 Brest, France.

<sup>2</sup>Service de Génétique Médicale et de Biologie de la Reproduction, CHRU Brest, F-29200 Brest, France.

<sup>3</sup>Department of Gastroenterology, Changhai Hospital, The Secondary Military Medical University, Shanghai, China.

<sup>4</sup>Shanghai Institute of Pancreatic Diseases, Shanghai, China.

<sup>5</sup>Department of Critical Care Medicine, Jinling Hospital, Affiliated Hospital of Medical School, Nanjing University, Nanjing, China.

<sup>6</sup>Pancreatology and Digestive Oncology Department, Beaujon Hospital, APHP - Clichy, Université Paris Cité, Paris, France.

<sup>7</sup>Institute of Medical Genetics, School of Medicine, Cardiff University, Cardiff, United Kingdom

<sup>#</sup>These authors share co-first authorship.

<sup>§</sup>Members of the Franco-Chinese GREPAN (Genetic REsearch on PANcreatitis) Study Group are listed in the Acknowledgements section.

### \*Correspondence:

Jian-Min Chen, MD, PhD, INSERM UMR1078 – EFS – UBO, 22 avenue Camille Desmoulins, 29238 BREST, France. Email: jian-min.chen@univ-brest.fr (**lead contact**)

Zhuan Liao, Department of Gastroenterology, Changhai Hospital, Second Military Medical University, 168 Changhai Road, Shanghai 200433, China. E-mail: liaozhuan@smmu.edu.cn

**ABSTRACT**

*Background:* *PRSSI* was the first reported chronic pancreatitis (CP) gene. The existence of both gain-of-function (GoF) and gain-of-proteotoxicity (GoP) pathological *PRSSI* variants, together with the fact that *PRSSI* variants have been identified in CP subtypes spanning the range from monogenic to multifactorial, has made the classification of *PRSSI* variants very challenging.

*Methods:* All currently reported *PRSSI* variants (derived primarily from two databases) were manually reviewed with respect to their clinical genetics, functional analysis and population allele frequency. They were classified by variant type and pathological mechanism within the framework of our recently proposed ACMG/AMP guidelines-based seven-category system.

*Results:* The total number of distinct germline *PRSSI* variants included for analysis was 100, comprising 3 copy number variants (CNVs), 12 5' and 3' variants, 19 intronic variants, 5 nonsense variants, 1 frameshift deletion variant, 6 synonymous variants, 1 in-frame duplication, 3 gene conversions and 50 missense variants. Based upon a combination of clinical genetic and functional analysis, population data and *in silico* analysis, we classified 26 variants (all 3 CNVs, the in-frame duplication, all 3 gene conversions and 19 missense) as “pathogenic”, 3 variants (missense) as “likely pathogenic”, 5 variants (four missense and one promoter) as “predisposing”, 13 variants (all missense) as “unknown significance”, 2 variants (missense) as “likely benign”, and all remaining 51 variants as “benign”.

*Conclusions:* We describe an expert classification of the 100 *PRSSI* variants reported to date. The results have immediate implications for reclassifying many ClinVar-registered *PRSSI* variants as well as providing optimal guidelines/standards for reporting *PRSSI* variants.

**Keywords:** Chronic pancreatitis; Genetic predisposition to disease; *PRSSI* gene; Trypsinogen/trypsin; Variant classification

**List of abbreviations**

ACMG/AMP, the American College of Medical Genetics and Genomics/Association for Molecular Pathology

ACP, alcoholic chronic pancreatitis

AIP, autoimmune pancreatitis

AP, acute pancreatitis

CFTR, cystic fibrosis transmembrane conductance regulator

CI, confidence interval

CP, chronic pancreatitis

CNV, copy number variant

CTRRC, chymotrypsin C

ER, endoplasmic reticulum

FCP, familial chronic pancreatitis

gnomAD, the Genome Aggregation Database

GoF, gain-of-function

GoP, gain-of-proteotoxicity

gpAF, global population allele frequency

GREPAN, Genetic REsearch on PANcreatitis

GWAS, genome-wide association study

HGMD, Human Gene Mutation Database

hspAF, highest subpopulation allele frequency

ICP, idiopathic chronic pancreatitis

8.3KJPN, 8.3 K Japanese population reference panel

KRGDB, Korean Reference Genome Database

LD, linkage disequilibrium

LoF, loss-of-function

NA, not available

OR, odds ratio

RAP, recurrent acute pancreatitis

## 1. Introduction

Chronic pancreatitis (CP) is a chronic inflammatory process leading to progressive morphological and functional changes of the pancreas [1, 2]. It has a prevalence of 36-125 per 100,000 individuals [3]. The process of CP is thought to be irreversible once initiated [4, 5] and there is currently no cure for the disease. Therefore, determining the genetic basis of CP holds out promise for developing new options in disease prevention and treatment. In 1996, a missense variant, p.R122H, in the *PRSS1* gene (encoding cationic trypsinogen) was identified as a cause of an inherited form of CP, namely autosomal dominant hereditary CP (HCP) [6]. This marked the beginning of a new era in CP research. To date, more than 10 CP-related gene loci have been reported (for references, see [7]). Moreover, studies of *PRSS1* variants led to the recognition of two distinct pathological pathways in the etiology of CP, namely the trypsin-dependent pathway [8] and the misfolding-dependent pathway [9]. *PRSS1* variants belonging to the former pathway include missense variants that increase trypsinogen (auto)activation and/or trypsin stability as well as copy number and regulatory variants that increase *PRSS1* dosage; these variants have been collectively termed gain-of-function (GoF) variants [10]. *PRSS1* variants belonging to the latter pathway include only missense variants that could induce the formation of misfolded proteins that would in turn elicit endoplasmic reticulum (ER) stress; these variants have been termed gain-of-proteotoxicity (GoP) variants [10]. The existence of both GoF and GoP pathologically relevant *PRSS1* variants, together with the fact that *PRSS1* variants have been identified in CP subtypes spanning monogenic to multifactorial, complicate the classification and interpretation of *PRSS1* variants [11].

The American College of Medical Genetics and Genomics/Association for Molecular Pathology (ACMG/AMP)-recommended five-category scheme (i.e., “pathogenic”, “likely pathogenic”, “uncertain significance”, “likely benign” and “benign”) for classifying variants in Mendelian disease genes [12] has been widely used in the human genetics field. However, a serious drawback of this five-category scheme is that it cannot deal properly with variants that fall somewhere between “pathogenic” and “benign”. Employing CP as a disease model, and focusing on the four most studied CP-related genes (i.e., *PRSS1*, *CFTR* (encoding cystic fibrosis transmembrane conductance regulator) [13, 14], *SPINK1* (encoding pancreatic secretory trypsin inhibitor) [15] and *CTRC* (encoding chymotrypsin C [16, 17]), we have recently proposed a seven-category system (i.e., “pathogenic”, “likely pathogenic”, “predisposing”, “likely predisposing”, “unknown significance”, “likely benign” and “benign”) for classifying variants in any disease-causing gene [10]. In a preprint, we have provided evidence to support our contention that the newly added “*predisposing*” variant classificatory category

is an appropriate repository for the many intermediate variants that fall somewhere between “pathogenic” and “benign” [18].

As far as *PRSSI* is concerned, our previous study employed many of the experimentally demonstrated GoF and GoP variants to establish proof of concept for our seven-category variant classification system [10]. Prior to our own study, two papers were directly relevant to the classification of *PRSSI* variants. In 2014, Németh and Sahin-Tóth provided an early classification of the then published *PRSSI* variants [19]. Their classifications relied strongly upon functional analysis data. For example, all variants that had not been functionally analyzed (apart from nonsense and canonical GT-AG splice site variants) were classified as being of “unknown significance”. Moreover, all missense variants that were experimentally shown to be compatible with a GoF or GoP mechanism were classified as “pathogenic”. The second paper did not include 5' and 3' variants or intronic variants (except for those occurring within the GT-AG canonical splice sites) and designated specific terms for classifying pathologically relevant *PRSSI* variants (e.g., “pathogenic variants with established risk to be disease-causing”) [11]. Herein, we describe a classification of all currently known *PRSSI* variants for CP within the framework of the ACMG/AMP guidelines-based seven-category variant classification system; an expert perspective from the Franco-Chinese GREPAN (Genetic REsearch on PANcreatitis) Study Group.

## 2. Methods

### 2.1. *PRSSI* variants

*PRSSI* variants (and related references) were derived primarily from the Database of Genetic Risk Factors in Chronic Pancreatitis (will be described as the CP Database throughout the manuscript) [19, 20] and complemented by data from the Human Gene Mutation Database (HGMD) [21, 22]. Three variants were excluded from further consideration: one somatic variant (i.e., p.G191R identified in four tumors [23]; registered in the CP database) and two variants obtained via personal communications (registered in HGMD). Cross-reference examination and keyword search (“*PRSSI*” plus “variant” or “mutation”) in PubMed identified 6 additional variants (Figure 1).

Variant nomenclature employed here was in accordance with [24]; NM\_002769.5 and GRCh37/hg19 chromosome 7 sequence were used as reference *PRSSI* mRNA and DNA sequences, respectively. Herein, we would like to emphasize two points. First, multiple variant nomenclature errors have been corrected by the CP Database [20]. Second, NG\_001333.2 (*Homo sapiens* T cell receptor beta locus on chromosome 7) has been

used by many investigators and the CP Database as reference *PRSSI* DNA sequence, resulting in alternate names for five common 5' variants (see subsections 3.2.1 and 3.4).

## 2.2. Approaches to, and principles for, variant classification

Functionality, a prerequisite for pathological relevance, is closely bound up with the type of variant or the variant's location within the genomic sequence of the gene in question. This is of particular importance for classifying *PRSSI* variants because both GoF and GoP variants are of pathological relevance whereas loss-of-function (LoF) variants are benign in relation to CP [10]. We therefore classified them by variant type and pathological mechanism within the framework of our recently proposed seven-category framework (Figure 1). Here, it is worth emphasizing three points. First, we previously proposed an allele frequency threshold, 0.001 as an aid to distinguish *PRSSI* "pathogenic" variants from "predisposing" variants with respect to CP [10]. Thus, any pathologically relevant *PRSSI* variant having an allele frequency of  $\geq 0.001$  in the general population would be considered to be too common to cause CP; rather, it would be regarded as predisposing to CP. This proposition, which was based on the allele frequency cutoff recommended for filtering dominant Mendelian disease-causing variants [25], and validated against most of the experimentally confirmed *PRSSI* GoF and GoP variants [10], will be adopted in the current study. Second, we previously proposed to classify LoF *PRSSI* variants (e.g., nonsense and canonical GT-AG splice site variants) as "benign" whilst specifying their *protective* nature in parentheses after the primary variant classificatory category [10]. Herein, we will classify all predicted and experimentally demonstrated LoF variants as "benign" whilst using the complementary term *protective* only for those variants causing a complete or almost complete LoF of the affected allele. Third, *PRSSI* variants were not only reported in subjects with CP but also in subjects with other diseases (see subsection 2.3.1). Here we included all known germline *PRSSI* variants in our classification. However, for those variants that were reported only in the context of non-CP diseases, their classification was carried out solely in relation to their pathological relevance to CP rather than to the non-CP diseases.

## 2.3. Factors taken into consideration for variant classification

### 2.3.1. Clinical genetic data

Clinical genetic data refer to whether or not the variant in question has been found in subjects with CP or other diseases, or in controls. Data from some original reports were reinterpreted according to our working definitions of HCP, familial CP (FCP) and idiopathic CP (ICP), in line with our previous publications [17, 26].

For variants that were reported in  $\leq 3$  studies, all studies were cited. For variants that were reported in  $>3$  studies, only the first three publications or the first publication plus two other selected publications were cited along with the CP Database [20] (N.B. the CP Database collated comprehensively the related original reports and extracted the numbers of CP carriers and non-CP carriers for each variant). For any variant, a publication that possibly overlapped with a prior one from the same group (as annotated by [20]) was not cited here. Definitions of a variant as common (allele frequency of  $\geq 0.05$ ), low frequency ( $\geq 0.005$  to  $< 0.05$ ), rare ( $\geq 0.001$  to  $< 0.005$ ) or very rare ( $< 0.001$ ) are in accordance with Manolio et al. [27].

*PRSSI* variants have been confirmed to play a pathological role (either causative or predisposing) in not only HCP, FCP and ICP but also in alcoholic CP (ACP) (e.g., [28, 29]). *PRSSI* variants may also play a role in autoimmune pancreatitis (AIP) (e.g., [30]) or asparaginase-associated pancreatitis [31] but definitive conclusions cannot be drawn at this stage owing to the limited data available and/or lack of replication. Here, clinical genetic findings made in these two rather specific manifestations of pancreatitis will not be considered as being informative with regard to the pathological role of *PRSSI* variants in the etiology of CP.

Whilst GoF and GoP *PRSSI* variants predispose to CP, CP itself increases the risk of pancreatic cancer [32]. However, to date, a direct causal link between GoF and GoP *PRSSI* variants and an increased risk of pancreatic cancer has not been established. Thus, germline *PRSSI* variants found in pancreatic cancer will not be considered as equivalent to variants found in CP, let alone for those found in cancers affecting other organs/tissues.

*PRSSI* variants have sometimes been identified in patients with acute pancreatitis (AP), particularly recurrent AP (RAP) without known etiological factors. Given that 10% of subjects with a first attack of AP and 36% of subjects with RAP would progress to CP [33], such findings will be considered here as clinical genetic evidence pertinent to the pathological role of *PRSSI* variants in the etiology of CP.

### 2.3.2. Functional analysis data

Functional analysis data (with respect to the functional effect of the variant in question) refer to laboratory findings obtained from either biochemical analysis, cell transfection experiments, transgenic mouse studies or analyses performed using patient-derived material.

### 2.3.3. Population allele frequency data



Global population allele frequency (gpAF) and highest subpopulation allele frequency (hspAF) of studied variants were obtained from the Genome Aggregation Database (gnomAD) [34, 35].

#### 2.3.4. In silico analyses and evidence-based conjecture

The linkage disequilibrium (LD) between two variants was evaluated by means of the LDpair Tool available on the LD link website [36]. The regulatory potential of 5' and 3' variants was evaluated in terms of their RegulomeDB probability scores [37, 38], a model that integrated functional genomics features along with continuous values such as ChIP-seq signals, DNase-seq signals, information content change, and DeepSEA scores. The score ranges from 0 to 1. The higher the score, the more likely the variant is to be a functional regulatory variant [39]. SpliceAI [40, 41], the currently most accurate tool for predicting splicing variants (e.g., [42, 43]), was used to classify intronic, nonsense and synonymous variants in terms of their contribution to aberrant splicing. Evidence-based conjecture was employed for classifying variants without supporting functional data whenever appropriate.

### 3. Results

A total of 100 distinct germline *PRSSI* variants, all reported in peer-reviewed papers, were derived from a combination of data from the CP Database, HGMD and literature search (Figure 1). Mindful of the existence of two discrete pathological mechanisms underlying CP-related *PRSSI* variants, these were divided into five subcategories for classificatory purposes (Figure 1). Before going into the details, we reiterate that some *PRSSI* variants have so far only been reported in subjects with diseases other than CP; these variants were classified with respect to their relevance to CP rather than the non-CP diseases.

#### 3.1. Classification of gain of trypsinogen CNVs

Consistent with previous publications [10, 19], all three gain of trypsinogen CNVs were classified as “pathogenic” because (i) they have been identified in multiple ICP patients and/or HCP or FCP families; (ii) they are absent or extremely rare in the general population; and (iii) their presumed dosage effect on the etiology of CP was confirmed by transgenic mouse studies (Table 1).

#### 3.2. Classification of 5' and 3' variants

For ease of discussion, the 12 5' and 3' variants will be divided into common and uncommon variants.

### 3.2.1. Common variants

All six common variants are in high LD, as indicated by the  $R^2$  values in Table 2. The first reported variant, c.-408T>C (rs10273639; known as c.-408C>T in accordance with NG\_001333.2), will henceforth be used as a tag for this common haplotype. c.-408T>C has a gpAF of 0.5189 in gnomAD (v2.1.1) [35]. A previous meta-analysis showed that c.-408T>C had a pooled odds ratio (OR) of 1.28 (95% confidence interval (CI) 1.17-1.40;  $p < 0.00001$ ) for ICP [44].

c.-204A>C (rs4726576; known as c.-204C>A in accordance with NG\_001333.2) has been shown, both *in silico* and *in vitro*, to be a functional regulatory variant [45, 46]. It has previously been classified as “predisposing” in the context of CP [10]. Of the remaining five variants, only c.-408T>C was subjected to a promoter reporter gene assay, and was shown to have no effect on gene expression [46].

Herein, we assessed the regulatory potential of the six common variants in terms of the RegulomeDB probability score [37, 38]. As shown in Table 2, the experimentally demonstrated functional c.-204A>C variant has a RegulomeDB probability score of 0.75713 whereas the other five variants have scores of  $< 0.14$ . We further correlated the six common variants with DNase I-accessible DNA regions in pancreatic tissue using data available from the NIH Roadmap Epigenomics Mapping Consortium website [47]. Only c.-204A>C was found to be located within a significant DNaseI-accessible DNA region within the *PRSSI* locus (Supplementary Figure 1). Additionally, c.-204A>C occurred within a MAF transcription factor binding site motif, according to RegulomDB [38] (Supplementary Figure 2a). Although MAF protein is highly expressed in the pancreas [48], to date, no studies have investigated its role in the exocrine pancreas. MAF proteins can act as transcriptional activators or repressors depending upon the target genes [49].

The above cross-variant comparisons have demonstrated a clear difference between c.-204A>C and the other five common variants in terms of their potential regulatory features. This has served to strengthen the previous classification of c.-204A>C as “predisposing” while suggesting that the other five variants could be classified as “benign”. It should however be emphasized that c.-204A>C may not be the sole functional variant underlying the increased risk of the c.-408T>C-tagged haplotype. This risk haplotype has been recently shown to contain the *PRSS3P2* and *TRY7* pseudogenes whereas the alternative haplotype has lost the two pseudogenes [50, 51]; this alternative haplotype was reported to be associated with a protective effect against CP [52]. Interestingly, the risk haplotype appears to contain still functional *PRSS3P2/TRY7* pseudogene enhancers that serve to upregulate pancreatic *PRSS2* expression [53], which is consistent with the increasingly appreciated role of *PRSS2* in

pancreatitis (see Masson et al. [52] and references therein). It is plausible that the risk conferred by the c.-408T>C-tagged haplotype is attributable to two non-mutually exclusive mechanisms.

### 3.2.2. Uncommon 5' variants

Except for c.-338T>G, which was identified in 3 of 65 Chinese patients with pancreatic cancer but without pancreatitis [54], all six uncommon 5' variants have been reported only once, either in CP patients or controls (Table 3). Herein, it should be noted that whereas c.-338T>G is very rare in combined gnomAD populations, it occurs as a low frequency variant in the Japanese and Korean populations according to their respective population-specific databases (i.e., 0.01468 in accordance with the 8.3 K Japanese population reference panel (8.3KJPN) project and 0.0109 in accordance with the Korean Reference Genome Database (KRGDB); Table 3).

Four variants (c.-184G>A, c.-173C>T, c.-147C>T and c.-30\_-28delTCC) were subjected to a promoter reporter gene assay but only c.-147C>T exhibited a significant (and negative) effect on gene expression [55]. Notably, c.-147C>T was identified as affecting a binding site for ATF4 [55]; ATF4 is highly expressed in the pancreas [48] and knockout of ATF4 has been reported to cause pancreatic deficiency in mice [56].

We further performed a cross-variant comparison in terms of regulatory potential. All six uncommon 5' variants are located within the significant DNase I-accessible DNA region that contains the common c.-204A>C variant (refer to Supplementary Figure 1a). Presumably, the high RegulomeDB probability score for the functional c.-147C>T variant, 0.98, would be largely attributable to its location within this significant DNase I-accessible DNA region and its disruption of the binding site for transcription factor ATF4 that has an experimentally confirmed role in the exocrine pancreas (Supplementary Figure 2b). By contrast, the identical and lower RegulomeDB probability score, 0.60906, for the other five variants would be accounted for by their location within the same significant DNase I-accessible DNA region even though they do not affect any known transcription factor binding sites (Table 3).

Taken together, all six uncommon 5' variants could be classified as “benign” (Table 3).

### 3.3. Classification of intronic variants

There existed no functional analytic data for all 19 *PRSSI* intronic variants with the exception of c.200+64\_68delCCCAG.

#### 3.3.1. Two canonical splice site variants

Neither of the two canonical splice site variants, c.40+1G>A and c.200+1G>A, was found in subjects with pancreatitis (Table 4). Both of them represent predicted LoF (pLoF) variants in accordance with [34]. Herein, we confirmed their LoF nature by means of SpliceAI [40, 41]. c.40+1G>A was predicted to disrupt the splice donor site of intron 1 whilst activating a nearby downstream cryptic splice donor site; the mutant transcript, which would be predicted to encode a product comprising only 19 amino acids (Supplementary Figure 3), is likely to be subject to significant degradation by nonsense-mediated mRNA decay [57]. c.200+1G>A was predicted to disrupt the splice donor site of intron 2 whilst activating an upstream cryptic splice donor site within exon 2; this would be predicted to lead to the loss of the terminal 33 bp of exon 2, which would in turn lead to the translation of a protein with an internal deletion of 11 amino acids; the mutant protein cannot be functional owing to the loss of histidine 63, one of trypsin's catalytic triad residues (Supplementary Figure 4).

Consistent with our previous publication [10], these two pLoF variants were classified as “benign (protective)”.

### 3.3.2. A pentanucleotide deletion variant with accompanying *in vivo* functional data

c.200+64\_68delCCCAG was detected in a Chinese AIP family but did not segregate with the disease [all three patients (one homozygote) and 3 of 7 genetically analyzed healthy members carried the variant]; it was also detected in a Chinese idiopathic AIP patient but was absent from 520 unrelated healthy controls [58]. RNA analysis using patient blood cells revealed a mutant transcript harboring an in-frame deletion of the first 141 nucleotides of exon 2 [58]. *In vitro* biochemical characterization demonstrated that the mutant protein had lower trypsin activity than the wild-type protein with or without enterokinase treatment [58]. However, as illustrated in Supplementary Figure 5, the mutant transcript would encode a protein lacking amino acids 14-60 in the context of pretrypsinogen and the first 37 amino acids in the context of trypsin. Such a significantly truncated protein at the N-terminal end is unlikely to have any trypsin activity. These, together with the fact that *PRSSI* has no confirmed role in AIP, would suggest that the detection of c.200+64\_68delCCCAG in AIP was most probably a chance finding. Consequently, we think that it is reasonable to classify c.200+64\_68delCCCAG as “benign” in the context of CP.

### 3.3.3. The remaining intronic variants

Two of the remaining 16 entries are worthy of mention. The first is c.41-49C>T, which was identified in 2 patients (father and son) of an FCP family. However, c.41-49C>T has a rather high allele frequency in the

general population (i.e., gpAF, 0.001122; hspAF, 0.005499 (Table 4)). Applying our previously proposed allele frequency threshold of 0.001 [10] suggests that it is unlikely to be a “pathogenic” variant. The second is c.454+172C>T, which was found in a HCP family. However, it was co-inherited with *PRSSI* p.N29I, the second most frequent *PRSSI* variant causing HCP.

Importantly, none of these 16 variants were predicted by SpliceAI to affect splicing, supporting their “benign” nature from a mechanistic viewpoint.

### 3.4. Classification of nonsense, frameshift deletion and synonymous variants

In common with the two canonical splice site LoF variants (Table 4), none of the six pLoF variants including five nonsense (p.Y37\*, p.Q56\*, p.W57\*, p.Q86\* and p.C160\*) and one frameshift deletion (p.P164Lfs\*3), were found in patients with CP (Supplementary Table 1). They are unequivocal LoF variants and were thus classified as “benign (protective)”.

The two common silent variants, c.486T>C (c.486C>T in accordance with NG\_001333.2; p.D162=) and c.738T>C (c.738C>T in accordance with NG\_001333.2; p.N246=), are in high LD with the previously discussed c.-408T>C variant. Of the four rare silent variants, only c.204C (p.R68=) was identified in a patient with idiopathic pancreatitis (Supplementary Table 1). All six silent variants could be reasonably classified as “benign” since none of them were predicted to affect splicing by SpliceAI.

### 3.5. Classification of missense, small in-frame duplication and gene conversion variants

#### 3.5.1. Variants with supporting functional analysis

Thirty-six of the 54 missense, small in-frame duplication and gene conversion variants have been functionally analyzed, mainly by the Sahin-Tóth group. A functional test is generally regarded as the gold standard for classifying any variant. Therefore, it is relatively straightforward to classify these 36 variants on the basis of their supporting functional data.

All 17 experimentally demonstrated GoF variants had a hspAF of <0.001. Of these variants, 7 affected the activation peptide sequence (i.e., the first 7 variants in Table 5), 3 affected Asn29, 4 affected Arg122, p.V39A segregated perfectly with the disease in a large HCP family (i.e., the variant was identified in all seven genetically analyzed patients but not in any of the four healthy family members analyzed [59]) whilst p.E190K was identified in an 11-year-old girl with ICP. All these 16 variants were characterized by a GoF effect on *PRSS1* itself. The remaining p.E79K variant, which was identified in a total of 17 patients with FCP, ICP or

ACP in multiple studies [20], may be regarded as an outlier with respect to the GoF mechanism. The p.E79K-cationic trypsin was shown to transactivate PRSS2 (encoding anionic trypsinogen, the second major trypsinogen isoform after PRSS1) more efficiently than the wild-type [60]; a finding compatible with the growing view that increased PRSS2 expression acts as an independent GoF mechanism underlying CP [52]. In short, the clinical genetic, functional and population data concurred, supporting a “pathogenic” classification for all 17 variants.

Of the 10 experimentally demonstrated GoP variants, 6 were characterized by a severe secretion effect and all these 6 variants had a hspAF of  $<0.001$ . Of the 6 variants associated with a severe secretion effect, 3 were further analyzed with respect to ER stress in transfected cells; all three were found to exhibit increased ER stress markers. Of these 3 variants, two had been identified in HCP families (Table 5). By contrast, none of the four variants characterized by a moderate secretion effect were found in HCP families. Most importantly, one of these variants, p.G208A, had an allele frequency of 0.009514 in East Asians; based upon data from a large Chinese cohort study [61], p.G208A had an OR of 4.72 for ICP (95% CI 2.88-7.72,  $p=9.2 \times 10^{-11}$ ) [62]. As a matter of fact, it was these two latter observations that prompted our proposal of the seven-category variant classification system [10]. Now that p.G208A is unequivocally categorized as a “predisposing” variant, it would appear reasonable to use “moderate secretion defect” and “severe secretion effect” as additional and functional criteria for classifying these GoF variants. Thus, the six variants with a severe secretion effect were classified as “pathogenic” whereas the four variants with a moderate secretion effect were classified as “predisposing” (Table 5).

All nine variants characterized by no effect or LoF were classified as “benign” (Table 5).

### 3.5.2. Variants without supporting functional data

The 18 missense variants lacking supporting functional data are summarized in Table 6. All were reported in single studies and were almost invariably found in single subjects. Moreover, eight of these variants were either found in controls or individuals with a disease that was not considered to be relevant to a pathological role for *PRSSI* variants in CP. Nonetheless, just as a rare benign variant may be found in a CP patient by chance (see Table 5), a rare pathological variant may also be found in a non-CP patient or control by chance for many reasons (e.g., asymptomatic disease, late disease onset, low penetrance, *de novo*). It should also be emphasized that *in silico* prediction tools tend to have relatively poor overall performance in relation to missense variants [63]. Their utility would be even more limited for the prediction of functional consequences of *PRSSI* variants owing to the existence of two possible pathological mechanisms. GoF variants are inherently refractory to

prediction [64] and we are not aware of any *in silico* tools that can distinguish GoP variants from LoF variants. Therefore, to be on the safe side, and following in the footsteps of Németh and Sahin-Tóth [19], all 18 missense variants could conservatively be classed as being of “unknown significance”. We nevertheless attempted to improve upon the classification of five of these variants using evidence-based conjecture.

p.V39E was found in a patient with RAP and is absent from gnomAD (Table 6). p.V39A, which affected the same amino acid site as p.V39E, was a “pathogenic” GoF variant (see Table 5). p.V39A is thought to modify PRSS1 structure in such a way as to reduce trypsinogen cleavage at Arg122 by trypsin and at Leu81 by CTRC as well as reducing trypsin degradation by CTRC [65]. It is possible that p.V39E (as well as p.V39G that was identified serendipitously in a pediatric soft tissue sarcoma survivor; Table 6) has a similar effect to p.V39A. Taken together, we are minded to classify both p.V39E and p.V39G as “likely pathogenic”.

p.Q98R was identified in a single patient with pancreatitis and has an extremely low allele frequency in gnomAD (Table 6). Interestingly, p.Q98K was a “benign” variant (see Table 5). Given that arginine and lysine have remarkably similar physicochemical properties (i.e., both are polar and positively charged) [66], we suggest classifying p.Q98R as “likely benign”.

p.R122G was identified in a health control and has an extremely low allele frequency in gnomAD (Table 6). Given that both p.R122H and p.R122C are disease-causing, we would classify p.R122G as “likely pathogenic”.

p.V123L was found in a subject without any overt pancreatic disease and is very rare in gnomAD (Table 6). p.V123M was a “benign” variant (see Table 5) and leucine is a conservative substitution for methionine [67], suggesting that p.V123L is a “likely benign” variant.

#### 4. Discussion

The Franco-Chinese GREPAN Study Group comprises clinicians, geneticists, bioinformaticists and basic researchers with diverse and complementary expertise in CP. In this study, the Group provides an expert classification of the currently reported 100 *PRSS1* variants with respect to their clinical relevance in relation to CP. Based upon the combined consideration of clinical genetic, functional analysis, population data and *in silico* analysis and evidence-based conjecture when appropriate, we classified 26 variants as “pathogenic”, 3 variants as “likely pathogenic”, 5 variants as “predisposing”, 13 variants as of “unknown significance”, 2 variants as “likely benign”, and 51 variants as “benign”. Apart from its completeness in terms of variants included, this study is characterized by two features. First, it employed *in silico* tools to aid the classification of 5' and 3', nonsense, silent and intronic variants but not missense variants. This decision was made on the basis of

balancing the biological plausibility of a given type of variant being pathologically relevant to CP or not with the reliability (and feasibility) of the *in silico* prediction tools on the other. For example, SpliceAI is a highly accurate tool for predicting the potential effects of single nucleotide substitutions or small indel variants on splicing. Therefore, a negative prediction for any silent or intronic *PRSSI* variant strongly supports a “benign” classification. Even in the case of a positive prediction (i.e., predicted to affect splicing), from a mechanistic viewpoint, the aberrantly spliced transcript would most likely lead to a LoF rather than a GoF or GoP. In this regard, it is worth mentioning that the vast majority of the silent and intronic *PRSSI* variants registered by ClinVar are classified as “uncertain significance”, “conflicting interpretations of pathogenicity” or “likely benign” [68]. In line with our above reasoning, most, if not all, of these ClinVar-registered silent and intronic *PRSSI* variants should be reclassified as “benign” with respect to CP. By contrast, the existence of two types of *PRSSI* pathologically relevant missense variants, GoF and GoP, made *in silico* predictions undesirable because these predictions could be potentially misleading. Therefore, one may have to rely heavily on functional analysis to classify clinically relevant *PRSSI* missense variants. Second, having compared the GoP variants with respect to their clinical genetic, functional analysis and population data, we proposed to classify the variants with a “moderate secretion defect” as “predisposing” and the variants with a “severe secretion defect” as “pathogenic”. This functional phenotype-based classification criterion, together with our previously proposed allele frequency threshold, promises to improve our understanding of the complexity underlying disease expression and the genotype-phenotype relationship in CP.

Variant classification is an important, complex and evolving issue in the field of human genetics, and this is reflected in the constantly refined variant classification standards/guidelines and the ever increasing number of reports of reclassified variants (for examples in both contexts, see [18]). In this vein, our proposed allele frequency threshold and functional phenotype-based classification criterion for distinguishing *PRSSI* “pathogenic” variants from “predisposing” variants (as well as our proposed classifications for some rare *PRSSI* missense variants) may need to be refined as more data become available. Indeed, separating “predisposing” variants from “pathogenic” variants is a difficult task, a process that would require us to make semi-arbitrary but nevertheless operational thresholds. As we noted previously, all such decisions “need to be made on a gene-by-gene basis and would require close collaboration between researchers and clinicians with specific expertise in the diseases/genes in question” [10]. Finally, it should be emphasized that some variants classified as “benign” may occur in *cis* with an as yet unidentified pathological variant.



In summary, this study provides a systematic classification of the so far reported 100 *PRSSI* variants for CP within the framework of the ACMG/AMP guidelines-based seven-category variant classification system. We believe that our study will have immediate implications for interpreting ClinVar-registered *PRSSI* variants and should serve to provide optimal guidelines/standards for reporting *PRSSI* variants in the future.

### Acknowledgements

Members of the Franco-Chinese GREPAN Study Group

**France:** Amandine ABRANTES (CH Cornouaille, Quimper, France), Lina AGUILERA MUNOZ (Beaujon Hospital, Clichy, France), Jérémie ALBOUYS (Dupuytren University Hospital, Limoges, France), Laurent ALRIC (CHU Rangueil, Toulouse, France), Xavier AMIOT (Hôpital Tenon (AP-HP), Paris, France), Isabelle ARCHAMBEAUD (CHU Nantes, Nantes, France), Solène AUDIAU (CH Cholet, Cholet, France), Laetitia BASTIDE (Hospital of Saint-Etienne, Saint-Etienne, France), Julien BAUDON (CH Cholet, Cholet, France), Guy BELLAICHE (CHI d'Aulnay-sous-Bois, Aulnay-sous-Bois, France), Serge BELLON (Avignon Hospital, Avignon, France), Valérie BERTRAND (Le Havre Hospital, Le Havre, France), Karine BIDEAU (CH Cornouaille, Quimper, France), Kareen BILLIEMAZ (Hospital of Saint-Etienne, St-Etienne, France), Claire BILLILOUD (University Hospital Croix Rousse, Lyon, France), Sabine BONNEFOY (HIA Clermont-Tonnerre, Brest, France), Corinne BORDERON (CHU Estaing, Clermont Ferrand, France), Barbara BOURNET (CHU Rangueil, Toulouse, France), Estelle BRETON (CH Saint Briec, Saint-Briec, France), Mathias BRUGEL (CHU Reims, Reims, France), Louis BUSCAIL (CHU Rangueil, Toulouse, France), Guillaume CADIOT (CHU Reims, Reims, France), Marine CAMUS (Saint Antoine Hospital, Paris, France), Xavier CAUSSE (CHR Orléans, Orléans, France), Patrick CHAMOUARD (CHRU Strasbourg, Strasbourg, France), Ulriikka CHAPUT (Saint Antoine Hospital, Paris, France), Franck CHOLET (CHU Brest, Brest, France), Dragos Marius CIOCAN (Hôpital Antoine-Béclère, Clamart, France), Christine CLAVEL (Hôpital Robert Debré, Reims, France), Benoit COFFIN (Hôpital Louis Mourier, Colombes, France), Laura COIMET-BERGER (CH Cahors, Cahors, France), Isabelle CREVEAUX (CHU Clermont-Ferrand, Clermont-Ferrand, France), Adrian CULETTO (CHU Rangueil, Toulouse, France), Oussama DABOUSSI (CH Chartres, Chartres, France), Louis DE MESTIER (Beaujon Hospital, Clichy, France), Thibault DEGAND (CHU Dijon, Dijon, France), Christelle D'ENGREMONT (CHU Grenoble, Grenoble, France), Bernard DENIS (Hôpital Pasteur, Colmar, France), Solène DERMINE (Beaujon Hospital, Clichy, France), Romain DESGRIPPES (CH Saint-Malo, Saint-Malo, France), Augustin DROUET D'AUBIGNY (CH Cornouaille, Quimper, France), Raphaël ENAUD (Pellegrin-Enfants Hospital, Bordeaux,

France), Alexandre FABRE (Hôpital de la Timone Enfants, Marseille, France), Dany GARGOT (CH Blois, Blois, France), Eve GELSI (Archet II Hospital, Nice, France), Elena GENTILCORE (CH des Escartons, Briançon, France), Rodica GINCUL (Hôpital privé Jean Mermoz, Lyon, France), Emmanuelle GINGLINGER-FAVRE (Hôpital de Mulhouse, Mulhouse, France), Marc GIOVANNINI (Institut Paoli Calmettes, Marseille, France), Cécile GOMERCIC (Archet II Hospital, Nice, France), Hannah GONDRAN (CHU Nantes, Nantes, France), Thomas GRAINVILLE (CHU Rennes, Rennes, France), Philippe GRANDVAL (Timone University Hospital, Marseille, France), Denis GRASSET (CH Bretagne Atlantique, Vannes, France), Stéphane GRIMALDI (CH Dax-Côte d'Argent, Dax, France), Sylvie GRIMBERT (GH Diaconesses, Paris, France), Hervé HAGEGE (CHI Villeneuve Saint Georges, Créteil, France), Sophie HEISSAT (Hôpital Femme Mère Enfant, Bron, France), Olivia HENTIC (Beaujon Hospital, Clichy, France), Anne HERBER-MAYNE (CH Chartres, Le Coudray, France), Marc HERVOUET (Hôpital d'instruction des armées Percy, Clamart, France), Solene HOIBIAN (Institut Paoli Calmettes, Marseille, France), Jérémie JACQUES (Dupuytren University Hospital, Limoges, France), Bénédicte JAIS (Beaujon Hospital, Paris, France), Mehdi KAASSIS (CH Cholet, Cholet, France), Stéphane KOCH (University Hospital of Besançon, Besançon, France), Elodie LACAZE (Le Havre Hospital, Le Havre, France), Joël LACROUTE (Clinique Sainte Barbe, Strasbourg, France), Thierry LAMIREAU (Pellegrin-Enfants Hospital, Bordeaux, France), Lucie LAURENT (Beaujon Hospital, Clichy, France), Xavier LE GUILLOU (CHU Poitiers, Poitiers, France), Marc LE RHUN (CHU Nantes, Nantes, France), Sarah LEBLANC (Hôpital privé Jean Mermoz, Lyon, France), Philippe LEVY (Beaujon Hospital, Clichy, France), Astrid LIEVRE (CHU Rennes, Rennes, France), Diane LORENZO (Beaujon Hospital, Paris, France), Frédérique MAIRE (Beaujon Hospital, Clichy, France), Kévin MARCEL (CH Bretagne Atlantique, Vannes, France), Clément MATIAS (CHU Amiens, Amiens), Jacques MAUILLON (Rouen University Hospital, Rouen, France), Stéphanie MORGANT (Beaujon Hospital, Clichy, France), Driffa MOUSSATA (Trousseau Hospital, Tours, France), Nelly MULLER (Beaujon Hospital, Clichy, France), Sophie NAMBOT (CHU Dijon, Dijon, France), Bertrand NAPOLEON (Hôpital privé Jean Mermoz, Lyon, France), Anne OLIVIER (Angers University Hospital, Angers, France), Maël PAGENAULT (CHU Rennes, Rennes, France), Anne-laure PELLETIER (Bichat Hospital, Paris France), Olivier PENNEC (CH Cornouaille, Quimper, France), Fabien PINARD (CH Cornouaille, Quimper, France), Mathieu PIOCHE (Edouard Herriot Hospital, Lyon, France), Bénédicte PROST (CH Saint Joseph Saint Luc, Lyon, France), Lucille QUENEHERVE (CHU Brest, Brest, France), Vinciane REBOURS (Beaujon Hospital, Clichy, France), Noemi REBOUX (CHU Brest, Brest, France), Samia REKIK (Bichat Hospital, Paris, France), Ghassan RIACHI (Rouen University Hospital, Rouen, France),

Barbara ROHMER (Hôpital Femme Mère Enfant, Bron, France), Bertrand ROQUELAURE (Hôpital de la Timone Enfants, Marseille, France), Isabelle ROSA HEZODE (CHI de Créteil, Créteil, France), Florian ROSTAIN (Edouard Herriot Hospital, Lyon, France), Jean-Christophe SAURIN (Edouard Herriot Hospital, Lyon, France), Laure SERVAIS (Clinique Charcot, Saint Foy les Lyon, France), Roxana STAN-IUGA (Hôpital Dreux, Dreux, France), Clément SUBTIL (CHU Bordeaux, Bordeaux, France), Charles TEXIER (CH Cholet, Cholet, France), Lucie THOMASSIN (Rouen University Hospital, Rouen, France), David TOUGERON (Poitiers University Hospital, Poitiers, France), Laurent TSAKIRIS (CH Melun, Melun, France), Jean-Christophe VALATS (Hôpital Saint-Eloi, Montpellier, France), Lucine VUITTON (University Hospital of Besançon, Besançon, France), Timothée WALLENHORST (CHU Rennes, Rennes, France), Marc WANGERME (Poitiers University Hospital, Poitiers, France), Hélène ZANALDI (CH Bastia, Bastia, France), Frank ZERBIB (CHU Bordeaux, Bordeaux, France).

**China:** Chen-Guang Bai (Changhai Hospital, Shanghai, China), Yun Bian (Changhai Hospital, Shanghai, China), Zhen-Zhai Cai (The Second Affiliated Hospital of Wenzhou Medical University, Wenzhou, China), Xiao-Yan Chang (Peking Union Medical College Hospital, Beijing, China), Guo-Dong Chen (Peking University People's Hospital, Beijing, China), Li Cheng (Shanghai General Hospital, Shanghai, China), Yu Chen (The Nanhai Hospital of Southern Medical University, Foshan, China), Jin-Tao Guo (Shengjing Hospital, Shenyang, China), Tao Guo (Peking Union Medical College Hospital, Beijing, China), Jun-Ling Han (Chinese PLA No.928 Hospital, Haikou, China), Chao-Hui He (The Fifth Affiliated Hospital of Zunyi Medical University, Zhuhai, China), Liang-Hao Hu (Changhai Hospital, Shanghai, China), Hao-Jie Huang (Changhai Hospital, Shanghai, China), Li Huang (The First Affiliated Hospital of Sun Yat-sen University, Guangzhou, China), Li-Ya Huang (General Hospital of Ningxia Medical University, Yinchuan, China), Si-Lin Huang (South China Hospital of Shenzhen University, Shenzhen, China), Wei Huang (West China Hospital, Chengdu, China), Fei Jiang (Changhai Hospital, Shanghai, China), Hui Jiang (Changhai Hospital, Shanghai, China), Feng-Chun Lu (Fujian Medical University Union Hospital, Fuzhou, China), Guo-Tao Lu (The Affiliated Hospital of Yangzhou University, Yangzhou, China), Zi-Peng Lu (The First Affiliated Hospital of Nanjing Medical University, Nanjing, China), Hui-Ping Li (The First Affiliated Hospital of Wenzhou Medical University, Wenzhou, China), Jing Li (West China Hospital, Chengdu, China), Le Li (The First Affiliated Hospital of Harbin Medical University, Harbin, China), Qiang Li (Heilongjiang Provincial Hospital, Harbin, China), Xiao-Yu Li (The Affiliated Hospital of Qingdao University, Qingdao, China), Qing Lin (Guangdong Provincial People's Hospital, Guangdong, China), Yu-Li Lin (Basic Medical College of Fudan University, Shanghai, China), Gai-Fang Liu

(The Third Hospital of Hebei Medical University, Shijiazhuang, China), Jie-Min Liu (Guizhou Provincial People's Hospital, Guiyang, China), Li-Xin Liu (The First Affiliated Hospital of Shanxi Medical University, Taiyuan, China), Pi Liu (The People's Hospital of Longhua, Shenzhen, China), Yi-Pin Liu (Yantai Affiliated Hospital of Binzhou Medical University, Yantai, China), Dong Lu (The First Affiliated Hospital of Fujian Medical University), Xiao-Dong Shao (General Hospital of Shenyang Military Command, Shenyang, China), Zhuo Shao (Changhai Hospital, Shanghai, China), Xu-Rui Song (970 Hospital, Weihai, China), Lei Wang (Changhai Hospital, Shanghai, China), Li-Juan Wang (Shanghai Institute of Pancreatic Diseases, Shanghai, China), Li-Sheng Wang (Shenzhen People's Hospital, Shenzhen, China), Lin Wang (Xijing Hospital, Xi'an, China), Wei Wang (Shanghai General Hospital, Shanghai, China), Zheng Wang (The First Affiliated Hospital of Xi'an Jiao Tong University, Xi'an, China), Li Wen (Peking Union Medical College Hospital, Beijing, China), Xi Wu (Peking Union Medical College Hospital, Beijing, China), Lei Xin (Changhai Hospital, Shanghai, China), Jing Xue (Ren Ji Hospital, Shanghai, China), Hong Yang (Peking Union Medical College Hospital, Beijing, China), Jian-Feng Yang (Affiliated Hangzhou First People's Hospital, Hangzhou, China), Tao Yin (Wuhan Union hospital, Wuhan, China), Bei-Ping Zhang (Guangdong Provincial Hospital of Chinese Medicine, Guangdong, China), Guo-Wei Zhang (Nanfang Hospital, Guangzhou, China), Hong Zhang (Shaanxi University of Chinese Medicine, Shaanxi, China), Rong-Chun Zhang (Xiamen humanity hospital, Xiamen, China), Yi-Jun Zhao (The First Affiliated Hospital of Anhui Medical University, Hefei, China), Si-Si Zhou (Qinghai Provincial People's Hospital, Qinghai, China), Ke-Xiang Zhu (The First Hospital of Lanzhou University, Lanzhou, China).

### **Financial support**

This work was supported by the Institut National de la Santé et de la Recherche Médicale (INSERM), the Association des Pancréatites Chroniques Hérititaires and the Association Gaétan Saleün, France and the National Natural Science Foundation of China (no. 82120108006 [Z.L.]). N.P. received a one-year visiting PhD student scholarship from the China Scholarship Council, the Ministry of Education of China (no. 202006190267). The funding sources did not play any role in the study design, collection, analysis or interpretation of the data or in the writing of the report.

### **Author contributions**

E.M. and W.B.Z. contributed to the study design, data collection, performed variant classification and contributed to manuscript writing. N.P. collected data and performed variant classification. V.R. and E.G.

analyzed data and critically revised the manuscript with important intellectual input. H.W, J.H.L. and Y.C.W. contributed to data collection and variant classification. Z.S.L. contributed to study conception and critically revised the manuscript with important intellectual input. D.N.C. contributed to the study design and variant classification and led manuscript revision. C.F. contributed to study conception, supervised the study and critically revised the manuscript with important intellectual input. Z.L. contributed to study conception, led the Chinese group and contributed to variant classification. J.M.C. conceived and coordinated the study, collected data, performed variant classification and drafted the manuscript. All authors approved the final manuscript submitted.

### Declaration of competing interest

The authors are unaware of any conflict of interest.

### Appendix A. Supplementary data

#### References

1. Hegyi P, Parniczky A, Lerch MM, Sheel ARG, Rebours V, Forsmark CE, et al. International consensus guidelines for risk factors in chronic pancreatitis. Recommendations from the working group for the international consensus guidelines for chronic pancreatitis in collaboration with the International Association of Pancreatology, the American Pancreatic Association, the Japan Pancreas Society, and European Pancreatic Club. *Pancreatology*. 2020;20(4):579-85.
2. Vege SS, Chari ST. Chronic pancreatitis. *N Engl J Med*. 2022;386(9):869-78.
3. Singh VK, Yadav D, Garg PK. Diagnosis and management of chronic pancreatitis: a review. *JAMA*. 2019;322(24):2422-34.
4. Kleeff J, Whitcomb DC, Shimosegawa T, Esposito I, Lerch MM, Gress T, et al. Chronic pancreatitis. *Nat Rev Dis Primers*. 2017;3:17060.
5. Mayerle J, Sendler M, Hegyi E, Beyer G, Lerch MM, Sahin-Toth M. Genetics, cell biology, and pathophysiology of pancreatitis. *Gastroenterology*. 2019;156(7):1951-68.e1.
6. Whitcomb DC, Gorry MC, Preston RA, Furey W, Sossenheimer MJ, Ulrich CD, et al. Hereditary pancreatitis is caused by a mutation in the cationic trypsinogen gene. *Nat Genet*. 1996;14(2):141-5.
7. Tóth A, Demcsák A, Zankl F, Oracz G, Unger LS, Bugert P, et al. Loss-of-function variant in chymotrypsin like elastase 3B (*CELA3B*) is associated with non-alcoholic chronic pancreatitis. *Pancreatology*. 2022;22(6):713-8.
8. Hegyi E, Sahin-Tóth M. Genetic risk in chronic pancreatitis: the trypsin-dependent pathway. *Dig Dis Sci*. 2017;62(7):1692-701.
9. Sahin-Tóth M. Genetic risk in chronic pancreatitis: the misfolding-dependent pathway. *Curr Opin Gastroenterol*. 2017;33(5):390-5.
10. Masson E, Zou WB, Génin E, Cooper DN, Le Gac G, Fichou Y, et al. Expanding ACMG variant classification guidelines into a general framework. *Hum Genomics*. 2022;16(1):31.
11. Girodon E, Rebours V, Chen JM, Pagin A, Levy P, Férec C, et al. Clinical interpretation of *PRSSI* variants in patients with pancreatitis. *Clin Res Hepatol Gastroenterol*. 2021;45(1):101497.
12. Richards S, Aziz N, Bale S, Bick D, Das S, Gastier-Foster J, et al. Standards and guidelines for the interpretation of sequence variants: a joint consensus recommendation of the American College of Medical Genetics and Genomics and the Association for Molecular Pathology. *Genet Med*. 2015;17(5):405-24.
13. Cohn JA, Friedman KJ, Noone PG, Knowles MR, Silverman LM, Jowell PS. Relation between mutations of the cystic fibrosis gene and idiopathic pancreatitis. *N Engl J Med*. 1998;339(10):653-8.

14. Sharer N, Schwarz M, Malone G, Howarth A, Painter J, Super M, et al. Mutations of the cystic fibrosis gene in patients with chronic pancreatitis. *N Engl J Med*. 1998;339(10):645-52.
15. Witt H, Luck W, Hennies HC, Classen M, Kage A, Lass U, et al. Mutations in the gene encoding the serine protease inhibitor, Kazal type 1 are associated with chronic pancreatitis. *Nat Genet*. 2000;25(2):213-6.
16. Rosendahl J, Witt H, Szmola R, Bhatia E, Ozsvari B, Landt O, et al. Chymotrypsin C (CTRC) variants that diminish activity or secretion are associated with chronic pancreatitis. *Nat Genet*. 2008;40(1):78-82.
17. Masson E, Chen JM, Scotet V, Le Maréchal C, Férec C. Association of rare chymotrypsinogen C (*CTRC*) gene variations in patients with idiopathic chronic pancreatitis. *Hum Genet*. 2008;123(1):83-91.
18. Chen JM, Masson E, Zou WB, Liao Z, Génin E, Cooper DN, et al. Validation of the ACMG/AMP guidelines-based seven-category variant classification system. medRxiv 2023.01.23.23284909; doi: <https://doi.org/10.1101/2023.01.23.23284909>.
19. Nemeth BC, Sahin-Toth M. Human cationic trypsinogen (*PRSSI*) variants and chronic pancreatitis. *Am J Physiol Gastrointest Liver Physiol*. 2014;306(6):G466-73.
20. Database of Genetic Risk Factors in Chronic Pancreatitis. <https://pancreasgenetics.org/>. Last accessed 04 April 2023.
21. Stenson PD, Mort M, Ball EV, Chapman M, Evans K, Azevedo L, et al. The Human Gene Mutation Database (HGMD®): optimizing its use in a clinical diagnostic or research setting. *Hum Genet*. 2020;139(10):1197-207.
22. The Human Gene Mutation Database (HGMD). <https://www.hgmd.cf.ac.uk>. Accessed 22 February 2023.
23. Chmielecki J, Bailey M, He J, Elvin J, Vergilio JA, Ramkissoon S, et al. Genomic profiling of a large set of diverse pediatric cancers identifies known and novel mutations across tumor spectra. *Cancer Res*. 2017;77(2):509-19.
24. den Dunnen JT, Dalgleish R, Maglott DR, Hart RK, Greenblatt MS, McGowan-Jordan J, et al. HGVS recommendations for the description of sequence variants: 2016 update. *Hum Mutat*. 2016;37(6):564-9.
25. Bamshad MJ, Ng SB, Bigham AW, Tabor HK, Emond MJ, Nickerson DA, et al. Exome sequencing as a tool for Mendelian disease gene discovery. *Nat Rev Genet*. 2011;12(11):745-55.
26. Chen JM, Férec C. Chronic pancreatitis: genetics and pathogenesis. *Annu Rev Genomics Hum Genet*. 2009;10:63-87.
27. Manolio TA, Collins FS, Cox NJ, Goldstein DB, Hindorf LA, Hunter DJ, et al. Finding the missing heritability of complex diseases. *Nature*. 2009;461(7265):747-53.
28. Whitcomb DC, LaRusch J, Krasinskas AM, Klei L, Smith JP, Brand RE, et al. Common genetic variants in the *CLDN2* and *PRSSI-PRSS2* loci alter risk for alcohol-related and sporadic pancreatitis. *Nat Genet*. 2012;44(12):1349-54.
29. Wang YC, Zou WB, Tang DH, Wang L, Hu LH, Qian YY, et al. High clinical and genetic similarity between chronic pancreatitis associated with light-to-moderate alcohol consumption and classical alcoholic chronic pancreatitis. *Gastro Hep Adv*. 2023;2(2):186-95.
30. Chang MC, Jan IS, Liang PC, Jeng YM, Yang CY, Tien YW, et al. Human cationic trypsinogen but not serine peptidase inhibitor, Kazal type 1 variants increase the risk of type 1 autoimmune pancreatitis. *J Gastroenterol Hepatol*. 2014;29(12):2038-42.
31. Wolthers BO, Frandsen TL, Patel CJ, Abaji R, Attarbaschi A, Barzilai S, et al. Trypsin-encoding *PRSSI-PRSS2* variations influence the risk of asparaginase-associated pancreatitis in children with acute lymphoblastic leukemia: a Ponte di Legno toxicity working group report. *Haematologica*. 2019;104(3):556-63.
32. Lowenfels AB, Maisonneuve P, Cavallini G, Ammann RW, Lankisch PG, Andersen JR, et al. Pancreatitis and the risk of pancreatic cancer. International Pancreatitis Study Group. *N Engl J Med*. 1993;328(20):1433-7.
33. Sankaran SJ, Xiao AY, Wu LM, Windsor JA, Forsmark CE, Petrov MS. Frequency of progression from acute to chronic pancreatitis and risk factors: a meta-analysis. *Gastroenterology*. 2015;149(6):1490-500.
34. Karczewski KJ, Francioli LC, Tiao G, Cummings BB, Alfoldi J, Wang Q, et al. The mutational constraint spectrum quantified from variation in 141,456 humans. *Nature*. 2020;581(7809):434-43.
35. gnomAD (Genome Aggregation Database). <https://gnomad.broadinstitute.org/>. Accessed 31 March 2023.
36. LD link. Available at: <https://ldlink.nci.nih.gov/?tab=home>. Accessed 26 January 2023.
37. Boyle AP, Hong EL, Hariharan M, Cheng Y, Schaub MA, Kasowski M, et al. Annotation of functional variation in personal genomes using RegulomeDB. *Genome Res*. 2012;22(9):1790-7.
38. RegulomeDB<sup>2.0.3</sup>. <https://regulomedb.org/regulome-search/>. Accessed 26 January 2023.
39. Dong S, Boyle AP. Predicting functional variants in enhancer and promoter elements using RegulomeDB. *Hum Mutat*. 2019;40(9):1292-8.
40. Jaganathan K, Kyriazopoulou Panagiotopoulou S, McRae JF, Darbandi SF, Knowles D, Li YI, et al. Predicting splicing from primary sequence with deep learning. *Cell*. 2019;176(3):535-48.
41. SpliceAI Lookup. <https://spliceailookup.broadinstitute.org/>. Accessed 16 March 2023.

42. Dawes R, Joshi H, Cooper ST. Empirical prediction of variant-activated cryptic splice donors using population-based RNA-Seq data. *Nat Commun.* 2022;13(1):1655.
43. Lord J, Baralle D. Splicing in the diagnosis of rare disease: advances and challenges. *Front Genet.* 2021;12:689892.
44. Herzig AF, Genin E, Cooper DN, Masson E, Férec C, Chen JM. Role of the common *PRSSI-PRSS2* haplotype in alcoholic and non-alcoholic chronic pancreatitis: Meta- and re-analyses. *Genes (Basel).* 2020;11(11):1349.
45. Zou WB, Cooper DN, Masson E, Pu N, Liao Z, Férec C, et al. Trypsinogen (*PRSSI* and *PRSS2*) gene dosage correlates with pancreatitis risk across genetic and transgenic studies: a systematic review and re-analysis. *Hum Genet.* 2022;141(8):1327-38.
46. Boulling A, Sato M, Masson E, Genin E, Chen JM, Férec C. Identification of a functional *PRSSI* promoter variant in linkage disequilibrium with the chronic pancreatitis-protecting rs10273639. *Gut.* 2015;64(11):1837-8.
47. The NIH Roadmap Epigenomics Mapping Consortium website. [https://egg2.wustl.edu/roadmap/web\\_portal/](https://egg2.wustl.edu/roadmap/web_portal/). Accessed 26 January 2023.
48. The Human Protein Atlas. <https://www.proteinatlas.org>. Accessed 22 March 2023.
49. Simile MM, Latte G, Pascale RM. MAF proteins: a family of regulating and regulated molecules. *Dig Med Res* 2018;1:22.
50. Lou H, Xie B, Wang Y, Gao Y, Xu S. Improved NGS variant calling tool for the *PRSSI-PRSS2* locus. *Gut.* 2022;Mar 14;gutjnl-2022-327203. doi: 10.1136/gutjnl-2022-. Online ahead of print.
51. Mastromatteo S, Chen A, Gong J, Lin F, Thiruvahindrapuram B, Sung WWL, et al. High-quality read-based phasing of cystic fibrosis cohort informs genetic understanding of disease modification. *HGG Adv.* 2023;4(1):100156.
52. Masson E, Ewers M, Paliwal S, Kume K, Scotet V, Cooper DN, et al. The *PRSS3P2* and *TRY7* deletion copy number variant modifies risk for chronic pancreatitis. *Pancreatology.* 2023;23(1):48-56.
53. Lou H, Wang Y, Xie B, Bai X, Gao Y, Zhang R, et al. Structural evolution of trypsinogen gene redundancy confers risk for pancreas diseases. <https://ssrn.com/abstract=4205753> or <http://dx.doi.org/10.2139/ssrn.4205753>. Accessed 28 October 2022.
54. Yi Q, Dong F, Lin L, Liu Q, Chen S, Gao F, et al. *PRSSI* mutations and the proteinase/antiproteinase imbalance in the pathogenesis of pancreatic cancer. *Tumour Biol.* 2016;37(5):5805-10.
55. Boulling A, Abrantes A, Masson E, Cooper DN, Robaszkiewicz M, Chen JM, et al. Discovery and functional annotation of *PRSSI* promoter variants in chronic pancreatitis. *Hum Mutat.* 2016;37(11):1149-52.
56. Iida K, Li Y, McGrath BC, Frank A, Cavener DR. PERK eIF2 alpha kinase is required to regulate the viability of the exocrine pancreas in mice. *BMC Cell Biol.* 2007;8:38.
57. Nickless A, Bailis JM, You Z. Control of gene expression through the nonsense-mediated RNA decay pathway. *Cell Biosci.* 2017;7:26.
58. Gao F, Li Y, Wang C, Zhuang Z, Liu QC, Chen J, et al. Identification of a novel frame-shift mutation in *PRSSI* gene in Han patients with autoimmune pancreatitis. *Curr Mol Med.* 2014;14(3):340-8.
59. Arduino C, Salacone P, Pasini B, Brusco A, Salmin P, Bacillo E, et al. Association of a new cationic trypsinogen gene mutation (V39A) with chronic pancreatitis in an Italian family. *Gut.* 2005;54(11):1663-4.
60. Teich N, Le Maréchal C, Kukor Z, Caca K, Witzigmann H, Chen JM, et al. Interaction between trypsinogen isoforms in genetically determined pancreatitis: mutation E79K in cationic trypsin (*PRSS1*) causes increased transactivation of anionic trypsinogen (*PRSS2*). *Hum Mutat.* 2004;23(1):22-31.
61. Zou WB, Tang XY, Zhou DZ, Qian YY, Hu LH, Yu FF, et al. *SPINK1*, *PRSSI*, *CTRC*, and *CFTR* genotypes influence disease onset and clinical outcomes in chronic pancreatitis. *Clin Transl Gastroenterol.* 2018;9(11):204.
62. Chen JM, Herzig AF, Génin E, Masson E, Cooper DN, Férec C. Scale and scope of gene-alcohol interactions in chronic pancreatitis: a systematic review. *Genes (Basel).* 2021;12(4):471.
63. Qorri E, Takaacs B, Graf A, Enyedi MZ, Pinter L, Kiss E, et al. A comprehensive evaluation of the performance of prediction algorithms on clinically relevant missense variants. *Int J Mol Sci.* 2022;23(14).
64. Gerasimavicius L, Livesey BJ, Marsh JA. Loss-of-function, gain-of-function and dominant-negative mutations have profoundly different effects on protein structure. *Nat Commun.* 2022;13(1):3895.
65. Szabó A, Sahin-Tóth M. Increased activation of hereditary pancreatitis-associated human cationic trypsinogen mutants in presence of chymotrypsin C. *J Biol Chem.* 2012;287(24):20701-10.
66. Betts MJ, Russell RB. Amino acid properties and consequences of substitutions. In: Barnes MR, Gray IC, editors. *Bioinformatics for geneticists.* John Wiley & Sons, Ltd. 2003. p.289-316.
67. Pechmann S, Frydman J. Interplay between chaperones and protein disorder promotes the evolution of protein networks. *PLoS Comput Biol.* 2014;10(6):e1003674.
68. *ClinVar.* <https://www.ncbi.nlm.nih.gov/clinvar/>. Accessed 16 February 2023.

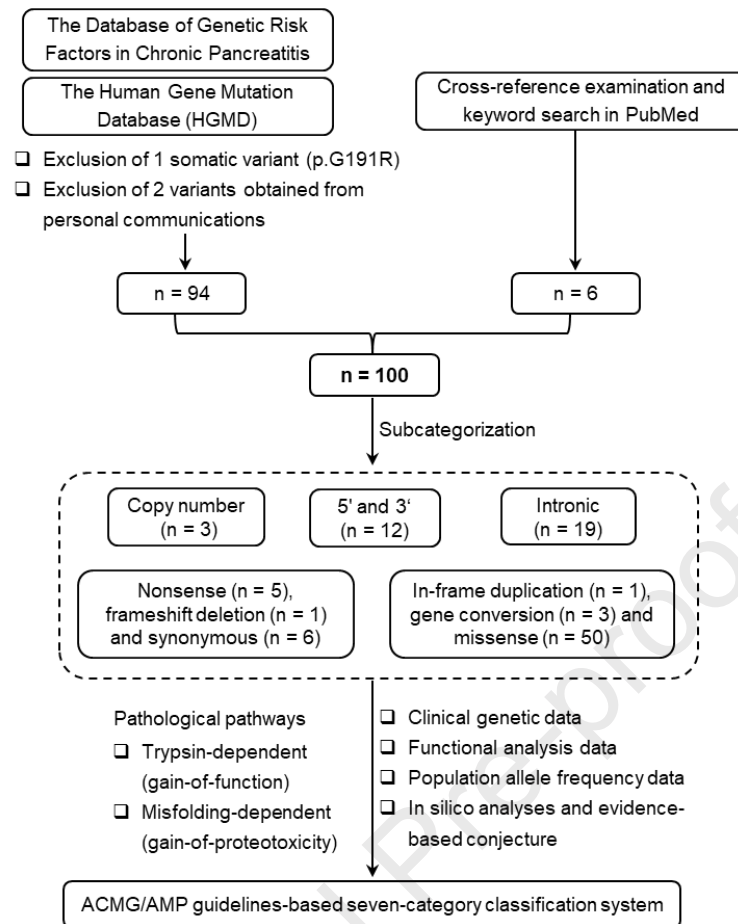
69. Le Maréchal C, Masson E, Chen JM, Morel F, Ruzsniwski P, Levy P, et al. Hereditary pancreatitis caused by triplication of the trypsinogen locus. *Nat Genet.* 2006;38(12):1372-4.
70. Masson E, Le Maréchal C, Chandak GR, Lamoril J, Bezieau S, Mahurkar S, et al. Trypsinogen copy number mutations in patients with idiopathic chronic pancreatitis. *Clin Gastroenterol Hepatol.* 2008;6(1):82-8.
71. Chauvin A, Chen JM, Quemener S, Masson E, Kehrer-Sawatzki H, Ohmle B, et al. Elucidation of the complex structure and origin of the human trypsinogen locus triplication. *Hum Mol Genet.* 2009;18(19):3605-14.
72. Athwal T, Huang W, Mukherjee R, Latawiec D, Chvanov M, Clarke R, et al. Expression of human cationic trypsinogen (PRSS1) in murine acinar cells promotes pancreatitis and apoptotic cell death. *Cell Death Dis.* 2014;5:e1165.
73. Huang H, Swidnicka-Siergiejko AK, Daniluk J, Gaiser S, Yao Y, Peng L, et al. Transgenic expression of PRSS1<sup>R122H</sup> sensitizes mice to pancreatitis. *Gastroenterology.* 2020;158(4):1072-82.
74. Wan J, Haddock A, Edenfield B, Ji B, Bi Y. Transgenic expression of human PRSS2 exacerbates pancreatitis in mice. *Gut.* 2020;69(11):2051-2.
75. LaRusch J, Barmada MM, Solomon S, Whitcomb DC. Whole exome sequencing identifies multiple, complex etiologies in an idiopathic hereditary pancreatitis kindred. *JOP.* 2012;13(3):258-62.
76. Masson E, Chen JM, Cooper DN, Férec C. PRSS1 copy number variants and promoter polymorphisms in pancreatitis: common pathogenetic mechanism, different genetic effects. *Gut.* 2018;67(3):592-3.
77. Masson E, Le Maréchal C, Delcenserie R, Chen JM, Férec C. Hereditary pancreatitis caused by a double gain-of-function trypsinogen mutation. *Hum Genet.* 2008;123(5):521-9.
78. Derikx MH, Kovacs P, Scholz M, Masson E, Chen JM, Ruffert C, et al. Polymorphisms at PRSS1-PRSS2 and CLDN2-MORC4 loci associate with alcoholic and non-alcoholic chronic pancreatitis in a European replication study. *Gut.* 2015;64(9):1426-33.
79. Masamune A, Nakano E, Hamada S, Kakuta Y, Kume K, Shimosegawa T. Common variants at PRSS1-PRSS2 and CLDN2-MORC4 loci associate with chronic pancreatitis in Japan. *Gut.* 2015;64(8):1345-6.
80. Paliwal S, Bhaskar S, Nageshwar Reddy D, Rao GV, Thomas V, Singh SP, et al. Association analysis of PRSS1-PRSS2 and CLDN2-MORC4 variants in nonalcoholic chronic pancreatitis using tropical calcific pancreatitis as model. *Pancreas.* 2016;45(8):1153-7.
81. Wang YC, Mao XT, Yu D, Mao SH, Li ZS, Zou WB, et al. Alcohol amplifies the association between common variants at PRSS1-PRSS2 locus and chronic pancreatitis in a dose-dependent manner. *Gut.* 2022;71(11):2369-71.
82. Tadaka S, Hishinuma E, Komaki S, Motoike IN, Kawashima J, Saigusa D, et al. jMorp updates in 2020: large enhancement of multi-omics data resources on the general Japanese population. *Nucleic Acids Res.* 2021;49(D1):D536-D44.
83. Jung KS, Hong KW, Jo HY, Choi J, Ban HJ, Cho SB, et al. KRGDDB: the large-scale variant database of 1722 Koreans based on whole genome sequencing. *Database (Oxford).* 2020;2020.
84. Tzetis M, Kaliakatsos M, Fotoulaki M, Papatheodorou A, Doudounakis S, Tsezou A, et al. Contribution of the CFTR gene, the pancreatic secretory trypsin inhibitor gene (SPINK1) and the cationic trypsinogen gene (PRSS1) to the etiology of recurrent pancreatitis. *Clin Genet.* 2007;71(5):451-7.
85. Férec C, Raguénès O, Salomon R, Roche C, Bernard JP, Guillot M, et al. Mutations in the cationic trypsinogen gene and evidence for genetic heterogeneity in hereditary pancreatitis. *J Med Genet.* 1999;36(3):228-32.
86. Gullo L, Laghi L, Migliori M, Lucrezio L, Bianchi P, Randolph AE, et al. SPINK1 and PRSS1 mutations in benign pancreatic hyperenzymemia. *Pancreas.* 2008;37(1):31-5.
87. Keiles S, Kammesheidt A. Identification of CFTR, PRSS1, and SPINK1 mutations in 381 patients with pancreatitis. *Pancreas.* 2006;33(3):221-7.
88. Gomez Lira M, Patuzzo C, Castellani C, Bovo P, Cavallini G, Mastella G, et al. CFTR and cationic trypsinogen mutations in idiopathic pancreatitis and neonatal hypertrypsinemia. *Pancreatolgy.* 2001;1(5):538-42.
89. Chen JM, Le Maréchal C, Lucas D, Raguénès O, Férec C. "Loss of function" mutations in the cationic trypsinogen gene (PRSS1) may act as a protective factor against pancreatitis. *Mol Genet Metab.* 2003;79(1):67-70.
90. Carvalho J, Oliveira P, Senz J, Sao Jose C, Hansford S, Teles SP, et al. Redefinition of familial intestinal gastric cancer: clinical and genetic perspectives. *J Med Genet.* 2021;58(1):1-11.
91. Liu QC, Zhuang ZH, Zeng K, Cheng ZJ, Gao F, Wang ZQ. Prevalence of pancreatic diabetes in patients carrying mutations or polymorphisms of the PRSS1 gene in the Han population. *Diabetes Technol Ther.* 2009;11(12):799-804.
92. Gao F, Liu QC, Zhang S, Zhuang ZH, Lin CZ, Lin XH. PRSS1 intron mutations in patients with pancreatic cancer and chronic pancreatitis. *Mol Med Rep.* 2012;5(2):449-51.



93. Zeng K, Liu QC, Lin JH, Lin XH, Zhuang ZH, Gao F, et al. Novel mutations of *PRSSI* gene in patients with pancreatic cancer among Han population. *Chin Med J (Engl)*. 2011;124(13):2065-7.
94. Liu QC, Gao F, Cheng ZJ, Ou QS. Multisite mutations of the *PRSSI* gene in a Chinese patient with chronic pancreatitis. *Hepatobiliary Pancreat Dis Int*. 2008;7(3):331-2.
95. Chua KH, Pua SM, Chew CH, Wong CH, Goh KL. Interaction between a novel intronic IVS3+172 variant and N29I mutation in *PRSSI* gene is associated with pancreatitis in a Malaysian Chinese family. *Pancreatology*. 2011;11(4):441-4.
96. Tautermann G, Ruebsamen H, Beck M, Dertinger S, Drexel H, Lohse P. R116C mutation of cationic trypsinogen in a Turkish family with recurrent pancreatitis illustrates genetic microheterogeneity of hereditary pancreatitis. *Digestion*. 2001;64(4):226-32.
97. Singhi AD, Pai RK, Kant JA, Bartholow TL, Zeh HJ, Lee KK, et al. The histopathology of *PRSSI* hereditary pancreatitis. *Am J Surg Pathol*. 2014;38(3):346-53.
98. Giefer MJ, Lowe ME, Werlin SL, Zimmerman B, Wilschanski M, Troendle D, et al. Early-onset acute recurrent and chronic pancreatitis is associated with *PRSSI* or *CTRC* gene mutations. *J Pediatr*. 2017;186:95-100.
99. Sofia VM, Da Sacco L, Surace C, Tomaiuolo AC, Genovese S, Grotta S, et al. Extensive molecular analysis suggested the strong genetic heterogeneity of idiopathic chronic pancreatitis. *Mol Med*. 2016;22:300-9.
100. Chen JM, Férec C, Cooper DN. Patterns and mutational signatures of tandem base substitutions causing human inherited disease. *Hum Mutat*. 2013;34(8):1119-30.
101. Grocock CJ, Rebours V, Delhaye MN, Andren-Sandberg A, Weiss FU, Mountford R, et al. The variable phenotype of the p.A16V mutation of cationic trypsinogen (*PRSSI*) in pancreatitis families. *Gut*. 2010;59(3):357-63.
102. Witt H, Luck W, Becker M. A signal peptide cleavage site mutation in the cationic trypsinogen gene is strongly associated with chronic pancreatitis. *Gastroenterology*. 1999;117(1):7-10.
103. Chen JM, Raguénès O, Férec C, Deprez PH, Verellen-Dumoulin C, Andriulli A. The A16V signal peptide cleavage site mutation in the cationic trypsinogen gene and chronic pancreatitis. *Gastroenterology*. 1999;117(6):1508-9.
104. Génin E, Cooper DN, Masson E, Férec C, Chen JM. NGS mismapping confounds the clinical interpretation of the *PRSSI* p.Ala16Val (c.47C>T) variant in chronic pancreatitis. *Gut*. 2022;71(4):841-2.
105. Németh BC, Szücs A, Hegyi P, Sahin-Tóth M. Novel *PRSSI* mutation p.P17T validates pathogenic relevance of *CTRC*-mediated processing of the trypsinogen activation peptide in chronic pancreatitis. *Am J Gastroenterol*. 2017;112(12):1896-8.
106. Chen JM, Kukor Z, Le Maréchal C, Tóth M, Tsakiris L, Raguénès O, et al. Evolution of trypsinogen activation peptides. *Mol Biol Evol*. 2003;20(11):1767-77.
107. Yilmaz B, Ekiz F, Karakas E, Aykut A, Simsek Z, Coban S, et al. A rare *PRSSI* mutation in a Turkish family with hereditary chronic pancreatitis. *Turk J Gastroenterol*. 2012;23(6):826-7.
108. Werlin S, Konikoff FM, Halpern Z, Barkay O, Yerushalmi B, Broide E, et al. Genetic and electrophysiological characteristics of recurrent acute pancreatitis. *J Pediatr Gastroenterol Nutr*. 2015;60(5):675-9.
109. Nemoda Z, Sahin-Tóth M. The tetra-aspartate motif in the activation peptide of human cationic trypsinogen is essential for autoactivation control but not for enteropeptidase recognition. *J Biol Chem*. 2005;280(33):29645-52.
110. Teich N, Ockenga J, Hoffmeister A, Manns M, Mossner J, Keim V. Chronic pancreatitis associated with an activation peptide mutation that facilitates trypsin activation. *Gastroenterology*. 2000;119(2):461-5.
111. Jancsó Z, Sahin-Tóth M. Mutation that promotes activation of trypsinogen increases severity of secretagogue-induced pancreatitis in mice. *Gastroenterology*. 2020;158(4):1083-94.
112. Joergensen MT, Geisz A, Brusgaard K, Schaffalitzky de Muckadell OB, Hegyi P, Gerdes AM, et al. Intragenic duplication: a novel mutational mechanism in hereditary pancreatitis. *Pancreas*. 2011;40(4):540-6.
113. Gorry MC, Gabbazedeh D, Furey W, Gates LK, Jr., Preston RA, Aston CE, et al. Mutations in the cationic trypsinogen gene are associated with recurrent acute and chronic pancreatitis. *Gastroenterology*. 1997;113(4):1063-8.
114. Masson E, Chen JM, Audrézet MP, Cooper DN, Férec C. A conservative assessment of the major genetic causes of idiopathic chronic pancreatitis: data from a comprehensive analysis of *PRSSI*, *SPINK1*, *CTRC* and *CFTR* genes in 253 young French patients. *PLoS One*. 2013;8(8):e73522.
115. Teich N, Nemoda Z, Köhler H, Heinritz W, Mössner J, Keim V, et al. Gene conversion between functional trypsinogen genes *PRSSI* and *PRSS2* associated with chronic pancreatitis in a six-year-old girl. *Hum Mutat*. 2005;25(4):343-7.

116. Dytz MG, Mendes de Melo J, de Castro Santos O, da Silva Santos ID, Rodacki M, Conceicao FL, et al. Hereditary pancreatitis associated with the N29T mutation of the *PRSSI* gene in a Brazilian family: a case-control study. *Medicine (Baltimore)*. 2015;94(37):e1508.
117. Applebaum-Shapiro SE, Finch R, Pfitzer RH, Hepp LA, Gates L, Amann S, et al. Hereditary pancreatitis in North America: the Pittsburgh-Midwest Multi-Center Pancreatic Study Group Study. *Pancreatology*. 2001;1(5):439-43.
118. Rosendahl J, Landt O, Bernadova J, Kovacs P, Teich N, Bodeker H, et al. *CFTR*, *SPINK1*, *CTRC* and *PRSSI* variants in chronic pancreatitis: is the role of mutated *CFTR* overestimated? *Gut*. 2013;62(4):582-92.
119. Chen JM, Piepoli Bis A, Le Bodic L, Ruszniewski P, Robaszkiewicz M, Deprez PH, et al. Mutational screening of the cationic trypsinogen gene in a large cohort of subjects with idiopathic chronic pancreatitis. *Clin Genet*. 2001;59(3):189-93.
120. Bernardino AL, Guarita DR, Mott CB, Pedrosa MR, Machado MC, Laudanna AA, et al. *CFTR*, *PRSSI* and *SPINK1* mutations in the development of pancreatitis in Brazilian patients. *JOP*. 2003;4(5):169-77.
121. Le Maréchal C, Chen JM, Quéré I, Raguénès O, Férec C, Auroux J. Discrimination of three mutational events that result in a disruption of the R122 primary autolysis site of the human cationic trypsinogen (*PRSS1*) by denaturing high performance liquid chromatography. *BMC Genet*. 2001;2:19.
122. Simon P, Weiss FU, Sahin-Tóth M, Parry M, Nayler O, Lenfers B, et al. Hereditary pancreatitis caused by a novel *PRSSI* mutation (Arg-122 --> Cys) that alters autoactivation and autodegradation of cationic trypsinogen. *J Biol Chem*. 2002;277(7):5404-10.
123. de las Heras-Castano G, Castro-Senosiain B, Fontalba A, Lopez-Hoyos M, Sanchez-Juan P. Hereditary pancreatitis: clinical features and inheritance characteristics of the R122C mutation in the cationic trypsinogen gene (*PRSSI*) in six Spanish families. *JOP*. 2009;10(3):249-55.
124. Gui F, Zhang Y, Wan J, Zhan X, Yao Y, Li Y, et al. Trypsin activity governs increased susceptibility to pancreatitis in mice expressing human *PRSS1*<sup>R122H</sup>. *J Clin Invest*. 2020;130(1):189-202.
125. Jancsó Z, Morales Granda NC, Demcsák A, Sahin-Tóth M. Mouse model of *PRSSI* p.R122H-related hereditary pancreatitis highlights context-dependent effect of autolysis-site mutation. *Pancreatology*. 2023;23(2):131-42.
126. Howes N, Greenhalf W, Rutherford S, O'Donnell M, Mountford R, Ellis I, et al. A new polymorphism for the R122H mutation in hereditary pancreatitis. *Gut*. 2001;48(2):247-50.
127. Chen JM, Raguénès O, Férec C, Deprez PH, Verellen-Dumoulin C. A CGC>CAT gene conversion-like event resulting in the R122H mutation in the cationic trypsinogen gene and its implication in the genotyping of pancreatitis. *J Med Genet*. 2000;37(11):E36.
128. Rygiel AM, Beer S, Simon P, Wertheim-Tysarowska K, Oracz G, Kucharzik T, et al. Gene conversion between cationic trypsinogen (*PRSSI*) and the pseudogene trypsinogen 6 (*PRSS3P2*) in patients with chronic pancreatitis. *Hum Mutat*. 2015;36(3):350-6.
129. Jancsó Z, Oracz G, Kujko AA, Kolodziejczyk E, Radisky ES, Rygiel AM, et al. Novel pathogenic *PRSSI* variant p.Glu190Lys in a case of chronic pancreatitis. *Front Genet*. 2019;10:46.
130. Schnúr A, Beer S, Witt H, Hegyi P, Sahin-Tóth M. Functional effects of 13 rare *PRSSI* variants presumed to cause chronic pancreatitis. *Gut*. 2014;63(2):337-43.
131. Hamoir C, Pepermans X, Piessevaux H, Jouret-Mourin A, Weynand B, Habyalimana JB, et al. Clinical and morphological characteristics of sporadic genetically determined pancreatitis as compared to idiopathic pancreatitis: higher risk of pancreatic cancer in *CFTR* variants. *Digestion*. 2013;87(4):229-39.
132. Masson E, Hammel P, Garceau C, Benech C, Quemener-Redon S, Chen JM, et al. Characterization of two deletions of the *CTRC* locus. *Mol Genet Metab*. 2013;109(3):296-300.
133. Teich N, Bauer N, Mossner J, Keim V. Mutational screening of patients with nonalcoholic chronic pancreatitis: identification of further trypsinogen variants. *Am J Gastroenterol*. 2002;97(2):341-6.
134. Németh BC, Patai ÁV, Sahin-Tóth M, Hegyi P. Misfolding cationic trypsinogen variant p.L104P causes hereditary pancreatitis. *Gut*. 2017;66(9):1727-8.
135. Enea A, Pizzol A, Pinon M, Cisaró F, Tandoi F, Arduino C, et al. Hereditary pancreatitis in paediatrics: the causative role of p.Leu104Pro mutation of cationic trypsinogen gene also in young subjects. *Gut*. 2019;68(4):767-8.
136. Balazs A, Hegyi P, Sahin-Tóth M. Pathogenic cellular role of the p.L104P human cationic trypsinogen variant in chronic pancreatitis. *Am J Physiol Gastrointest Liver Physiol*. 2016;310(7):G477-86.
137. Pho-Iam T, Thongnoppakhun W, Yenchitsomanus PT, Limwongse C. A Thai family with hereditary pancreatitis and increased cancer risk due to a mutation in *PRSSI* gene. *World J Gastroenterol*. 2005;11(11):1634-8.
138. Kereszturi E, Szmola R, Kukor Z, Simon P, Weiss FU, Lerch MM, et al. Hereditary pancreatitis caused by mutation-induced misfolding of human cationic trypsinogen: a novel disease mechanism. *Hum Mutat*. 2009;30(4):575-82.

139. Thiel F, Reiser M, Weiss FU. A rare *PRSSI* p.S127C mutation is associated with chronic pancreatitis and causes misfolding-induced ER-stress. *Pancreatology*. 2022;22(8):1112-9.
140. Chang YT, Wei SC, L PC, Tien YW, Jan IS, Su YN, et al. Association and differential role of *PRSSI* and *SPINK1* mutation in early-onset and late-onset idiopathic chronic pancreatitis in Chinese subjects. *Gut*. 2009;58(6):885.
141. Sultan M, Werlin S, Venkatasubramani N. Genetic prevalence and characteristics in children with recurrent pancreatitis. *J Pediatr Gastroenterol Nutr*. 2012;54(5):645-50.
142. Rebours V, Boutron-Ruault MC, Schnee M, Ferec C, Le Marechal C, Hentic O, et al. The natural history of hereditary pancreatitis: a national series. *Gut*. 2009;58(1):97-103.
143. Lee YJ, Kim KM, Choi JH, Lee BH, Kim GH, Yoo HW. High incidence of *PRSSI* and *SPINK1* mutations in Korean children with acute recurrent and chronic pancreatitis. *J Pediatr Gastroenterol Nutr*. 2011;52(4):478-81.
144. Masamune A, Nakano E, Kume K, Takikawa T, Kakuta Y, Shimosegawa T. *PRSSI* c.623G>C (p.G208A) variant is associated with pancreatitis in Japan. *Gut*. 2014;63(2):366.
145. Gao F, Li YM, Hong GL, Xu ZF, Liu QC, He QL, et al. *PRSSI*\_p.Leu81Met mutation results in autoimmune pancreatitis. *World J Gastroenterol*. 2013;19(21):3332-8.
146. Szmola R, Sahin-Tóth M. Chymotrypsin C (caldecrin) promotes degradation of human cationic trypsin: identity with Rinderknecht's enzyme Y. *Proc Natl Acad Sci U S A*. 2007;104(27):11227-32.
147. CTTC - Chymotrypsin-C - Homo sapiens (Human) - UniProt. <https://www.uniprot.org/uniprotkb/Q99895/entry>. Accessed 14 February 2023.
148. Szabó A, Sahin-Tóth M. Determinants of chymotrypsin C cleavage specificity in the calcium-binding loop of human cationic trypsinogen. *FEBS J*. 2012;279(23):4283-92.
149. Felderbauer P, Schnekenburger J, Lebert R, Bulut K, Parry M, Meister T, et al. A novel A121T mutation in human cationic trypsinogen associated with hereditary pancreatitis: functional data indicating a loss-of-function mutation influencing the R122 trypsin cleavage site. *J Med Genet*. 2008;45(8):507-12.
150. Liu QC, Gao F, Ou QS, Zhuang ZH, Lin SR, Yang B, et al. Novel mutation and polymorphism of *PRSSI* gene in the Chinese patients with hereditary pancreatitis and chronic pancreatitis. *Chin Med J (Engl)*. 2008;121(2):108-11.
151. Szmola R, Sahin-Tóth M. Uncertainties in the classification of human cationic trypsinogen (*PRSS1*) variants as hereditary pancreatitis-associated mutations. *J Med Genet*. 2010;47(5):348-50.
152. Tamura K, Yu J, Hata T, Suenaga M, Shindo K, Abe T, et al. Mutations in the pancreatic secretory enzymes CPA1 and CPB1 are associated with pancreatic cancer. *Proc Natl Acad Sci U S A*. 2018;115(18):4767-72.
153. Huang KL, Mashl RJ, Wu Y, Ritter DI, Wang J, Oh C, et al. Pathogenic germline variants in 10,389 adult cancers. *Cell*. 2018;173(2):355-70.
154. Corleto VD, Gambardella S, Gullotta F, D'Apice MR, Piciocchi M, Galli E, et al. New *PRSSI* and common *CFTR* mutations in a child with acute recurrent pancreatitis, could be considered an "hereditary" form of pancreatitis ? *BMC Gastroenterol*. 2010;10:119.
155. Pelaez-Luna M, Robles-Diaz G, Canizales-Quinteros S, Tusie-Luna MT. *PRSSI* and *SPINK1* mutations in idiopathic chronic and recurrent acute pancreatitis. *World J Gastroenterol*. 2014;20(33):11788-92.
156. Kim J, Gianferante M, Karyadi DM, Hartley SW, Frone MN, Luo W, et al. Frequency of pathogenic germline variants in cancer-susceptibility genes in the Childhood Cancer Survivor Study. *JNCI Cancer Spectr*. 2021;5(2).
157. Shindo K, Yu J, Suenaga M, Fesharakizadeh S, Cho C, Macgregor-Das A, et al. Deleterious germline mutations in patients with apparently sporadic pancreatic adenocarcinoma. *J Clin Oncol*. 2017;35(30):3382-90.
158. Gou S, Yu J, Wang C, Liu T, Cui P, Li X. Three female familial cases of solid pseudopapillary tumors with a protease serine 1 gene mutation. *Pancreas*. 2013;42(1):168-73.



**Figure 1.** Variant collection and classification procedures.

**Table 1.** Classification of gain of trypsinogen CNVs

Variant	Clinical genetic data	Functional analytic data	gpAF (hspAF) <sup>a</sup>	Classification (for CP)
Triplication	Causes HCP in multiple families [69]; has also been identified in cases with FCP and ICP [45, 70]. Triplication CNVs identified in French patients [69, 70] were found to arise from a common founder chromosome [71])	GoF (three mouse transgenic studies [72-74] were retrospectively identified to be informative in relation to the pathogenic mechanism underlying the trypsinogen gene dosage effect in pancreatitis [45])	NA	Pathogenic
Duplication	Detected in multiple ICP patients and 2 FCP patients [20, 45, 70]; detected only in the youngest patient from an HCP family (the variant must have originated <i>de novo</i> since it was not detected in either parent) [75]. There existed at least five distinct duplication CNVs based upon breakpoint sequences characterized at the nucleotide sequence level [76]	Same as above	0.00004610 (0.0001049, African/African American)	Pathogenic
Double GoF hybrid variant	Identified in 1 HCP family with 6 patients across 3 generations [77]	GoF (gene dosage plus the effect of p.Asn29Ile) [77])	NA	Pathogenic

<sup>a</sup>In accordance with gnomAD SVs v2.1 [35]. NA, not available.

**Table 2.** Classification of common *PRSSI* 5' and 3' variants

Location	Variant <sup>a</sup>			$R^2$ (with respect to rs10273639) <sup>b</sup>	Clinical genetic data	Functional data	RegulomeDB score <sup>c</sup>	Classification (for CP)
	c.nomenclature (NM_002769.5)	g.nomenclature (chr7, hg19)	rs number					
5'	c.-408T>C (c.-408C>T) <sup>d</sup>	g.142456928T>C	rs10273639		Association with CP discovered by means of GWAS [28]; replicated in multiple subsequent studies [20, 78, 79]; pooled odds ratio of the risk allele for ICP was 1.28 [44]	Not functional by means of a promoter reporter gene assay [46]; the risk haplotype is associated with slightly increased <i>PRSSI</i> and <i>PRSS2</i> mRNA expression in pancreatic tissue in a dosage-dependent manner [28, 44]; the risk haplotype contains still functional <i>PRSS3P2/TRY7</i> pseudogene enhancers that upregulate pancreatic <i>PRSS2</i> expression [52, 53]	0.13454	Benign
5'	c.-204A>C (c.-204C>A) <sup>d</sup>	g.142457132A>C	rs4726576	0.9365	Found to be in complete LD with c.-408T>C by resequencing the promoter region of <i>PRSSI</i> in French Caucasian individuals [46]; associated with CP in an Indian study [80] and a Chinese study [81]	GoF (increased gene expression by means of a promoter reporter gene assay [46])	0.75713	Predisposing
5'	c.-1809G>A <sup>e</sup>	g.142455527G>A	rs3757378	0.7111	Found by direct sequencing of 2.1 kb <i>PRSSI</i> 5' region; linked with c.-408T>C and c.-204A>C but not associated with tropical calcific pancreatitis [80]	No data available	0.00347	Benign
5'	c.-1798C>T	g.142455538C>T	rs3757377	0.7158	Same as c.-1809A>G	No data available	0.13454	Benign

5'	c.-1383A>G (c.-1383G>A) <sup>d</sup>	g.142455953A>G	rs9969188	0.9568	Same as c.-1809A>G	No data available	0.0	Benign
3'	c.*12,596G>A	g.142473466G>A	rs13228878	0.6593	Identified by GWAS; linked with c.-408T>C and associated with asparaginase- associated pancreatitis [31]	No data available	0.09659	Benign

<sup>a</sup>Variants are listed in the order of publication year.

<sup>b</sup>Data were obtained using the LDproxy Tool available on the LD link website [36] in the context of all populations.

<sup>c</sup>Data were obtained from the RegulomeDB website [38].

<sup>d</sup>Alternate name in accordance with NG\_001333.2 (Homo sapiens T cell receptor beta locus on chromosome 7).

<sup>e</sup>This variant was incorrectly listed as c.-1,808G>A in the original report [80].

**Table 3.** Classification of uncommon *PRSSI* 5' variants

Variant			Clinical genetic data	Functional data	gpAF (hspAF) <sup>a</sup>	RegulomeDB <sup>b</sup>		Classification (for CP)
c.nomenclature (NM_002769.5)	g.nomenclature (chr7, hg19)	rs number				Score	Motif	
c.-338T>G	g.142456998T>G	rs184553357	Identified in 3 of 65 Chinese patients with pancreatic cancer (but without pancreatitis) [54]	No data available	0.00006389 (0.001284, East Asian) [N.B. allele frequency in the Japanese population, 0.01468 (8.3KJPN project) [82]; allele frequency in the Korean population, 0.0109 (KRGDB project) [83]]	0.60906	No	Benign
c.-184G>A	g.142457152G>A	rs139432246	Found in 1 of 242 French ICP patients (not in 384 controls) by resequencing [55]	No effect on reporter gene expression [55]	0.005121 (0.01849, African/African American)	0.60906	No	Benign
c.-173C>T	g.142457163C>T	rs572772014	Found in 1 of 384 French controls (not in 242 ICP patients) by resequencing [55]	No effect on reporter gene expression [55]	0.00003225 (0.00006529, non-Finnish European)	0.60906	No	Benign
c.-147C>T	g.142457189C>T	rs754367025	Found in 1 of 384 French controls (not in 242 ICP patients) by resequencing [55]	Significantly reduced reporter gene expression (a reduction of 86% of normal) by reducing the affinity of an ATF4 transcription factor binding site [55]	Absent	0.98 <sup>c</sup>	ATF4 <sup>c</sup>	Benign
c.-36G>A	g.142457300G>A	rs377134514	Found in 1 of 236 healthy Greek subjects [84]	No data available	0.00002475 (0.00005014, East Asian)	0.60906	No	Benign
c.-30_-28delTCC	g.142457306_142457308del	rs1287463139	Found in a single CP patient [85]	Mild effect on reporter gene expression (a	0.0004914 (0.004245, African/African American)	0.60906 <sup>d</sup>	No <sup>d</sup>	Benign



				reduction of 24% of normal) [55]				
--	--	--	--	-------------------------------------	--	--	--	--

<sup>a</sup>In accordance with gnomAD v2.1.1 [35].

<sup>b</sup>Data were obtained from the RegulomeDB website [38].

<sup>c</sup>Used chr7(hg19):142457189-142457190 for querying RegulomeDB [38].

<sup>d</sup>Used chr7(hg19):142457306-142457307 for querying RegulomeDB [38].

Journal Pre-proof

**Table 4.** Classification of *PRSSI* intronic variants

Intron	Variant			Clinical genetic data	gpAF (hspAF) <sup>a</sup>	Classification (for CP)
	c.nomenclature (NM_002769.5)	g.nomenclature (chr7, hg19)	rs number			
1	c.40+1G>A	g.142457376G>A	rs149125789	Identified in a patient with benign pancreatic hyperenzymemia but without pancreatitis [86]	0.00006010 (0.0003204, African/African American)	Benign (protective)
1	c.40+40delC	g.142457415del	rs779579792	Identified in 1 of 381 patients with pancreatitis; no controls were analyzed [87]	NA	Benign
1	c.40+299G>A	g.142457674G>A	rs2011216	In LD with c.-408T>C [28]	0.3759 (0.6515, East Asian)	Benign
1	c.41-49C>T	g.142458357C>T	rs190942214	Detected in 2 patients (father and son) from a FCP family; no controls were analyzed [88]	0.001122 (0.005499, Ashkenazi Jewish)	Benign
2	c.200+1G>A	g.142458566G>A	rs143909348	Identified in 1 of 55 alcoholics without pancreatitis [89]	0.004579 (0.02871 African/African American)	Benign (protective)
2	c.200+64_68delC CCAG <sup>b</sup>	g.142458629_142458633del	rs377590054	Detected in all three patients (one homozygote) and in 3 of 7 healthy members of a Chinese AIP family; detected also in a Chinese idiopathic AIP patient [58]	0.00001422 (0.0002009, East Asian)	Benign
2	c.201-99G>C	g.142459526G>C	rs530207004	Identified in 1 of 50 patients with familial intestinal gastric cancer and 1 of 107 subjects from the normal Italian Tuscany population [90]	0.0007646 (0.001297, European (non-Finnish))	Benign
3	c.454+10A>C <sup>c</sup>	g.142459888A>C	Not available	Identified in 5 of 253 Han Chinese patients with pancreatitis (comprising 22 with alcohol-related diseases, 16 with idiopathic disease, 30 cases with hyperlipidemia, 35 with the hereditary form from six families, and 150 with gallbladder disease) [91]	NA	Benign
3	c.454+36T>C <sup>d</sup>	g.142459914T>C	rs761438114	Identified in 1 of 65 Chinese patients with pancreatic cancer [92]	0.0001275 (0.001655, East Asian)	Benign
3	c.454+75A>G	g.142459953A>G	rs1376416883	Identified in 27 of 253 Chinese patients with pancreatitis (comprising 22 with alcohol-related diseases, 16 with idiopathic disease, 30 cases with hyperlipidemia, 35 with the hereditary form from six families, and 150 with gallbladder disease) and in 4 of 320 controls [91]	NA	Benign
3	c.454+127A>T <sup>e</sup>	g.142460005A>T	rs376116875	Detected in 1 of 29 Chinese patients with pancreatitis; this patient also carried	NA	Benign

				c.454+157C>G (incorrectly named c.454+157G>C) [92]. Whether the two variants were in <i>cis</i> or in <i>trans</i> is unknown		
3	c.454+157C>G <sup>f</sup>	g.142460035C>G	rs371236770	Detected in 2 of 156 Chinese patients with pancreatic cancer [93] and 1 of 29 Chinese patients with pancreatitis [92]	NA	Benign
3	c.454+157C>A <sup>g</sup>	g.142460035C>A	Not available	Detected in 1 Chinese patient with CP [94]	NA	Benign
3	c.454+172C>T	g.142460050C>T	rs878977606	Co-inherited with <i>PRSSI</i> p.Asn29Ile in four patients from a HCP family [95]	NA	Benign
3	c.455-192T>A <sup>g</sup>	g.142460090T>A	Not available	Detected in 1 Chinese patient with CP [94]	NA	Benign
4	c.592-79G>A <sup>h</sup>	g.142460640G>A	rs531271210	Detected in 2 (one Italian male and one Turkish female) of 109 patients with ICP [96]	NA	Benign
4	c.592-78G>A <sup>h</sup>	g.142460641G>A	rs1337286040	Detected in 2 (one Italian male and one Turkish female) of 109 patients with ICP [96]	NA	Benign
4	c.592-24C>T	g.142460695C>T	rs192452846	Detected in 4 patient with pancreatitis [20, 87, 97, 98]	0.003316 (0.005373, non-Finnish European)	Benign
4	c.592[-11C>T;-8C>T] <sup>i</sup>	g.[142460708C>T;142460711C>T]	rs183791770; rs200381474	Detected in 6 subjects with pancreatitis [20, 87, 98, 99]	0.003305 (0.01476, South Asian)	Benign

<sup>a</sup>In accordance with gnomAD v2.1.1 [35].

<sup>b</sup>Incorrectly named as c.200+56\_60delCCCAG in the original report [58].

<sup>c</sup>Incorrectly named as c.454+10T>G in the original report [91].

<sup>d</sup>Incorrectly named as c.454+36A>G in the original report [92].

<sup>e</sup>Incorrectly named as c.454+127T>A in the original report [92].

<sup>f</sup>Incorrectly named as c.454+157G>C in the original reports [92, 93].

<sup>g</sup>These variants were incorrectly described as exon 3 variants in the original report and were identified in the same patient [94]. Whether the two variants were in *cis* or in *trans* is unknown.

<sup>h</sup>These two variants were detected together. They are most likely to have been generated simultaneously [100] given their occurrence at adjacent positions and their absence in gnomAD.

<sup>i</sup>The two variants were annotated here to be in *cis* since (i) they are in complete LD ( $R^2 = 1.0$ ) using the LDpair Tool [36] in the context of all populations and (ii) they were detected together in all six carriers.

**Table 5.** Classification of functionally analyzed *PRSSI* missense variants, small in-frame duplication and gene conversion variants

Exon	Variant		Clinical genetic data <sup>a</sup>		Functional consequence	gpAF (hspAF) <sup>d</sup>	Classification (for CP)
	c.nomenclature (NM_002769.5)	Amino acid change	Number of HCP families (family description) reported <sup>b</sup>	Other <sup>c</sup>			
<b>GoF</b>							
2	c.47C>T	p.A16V	2 (4 patients across 2 generations; 3 patients across 2 generations) [101]	Frequently reported in patients with FCP or ICP [20, 102, 103]. It is the third most commonly detected rare <i>PRSSI</i> variant in CP [20]	Increased activation [65]	NA [104]	Pathogenic
2	c.49C>A	p.P17T		Arose <i>de novo</i> in a Hungarian CP patient [105]	Increased activation [105]	NA	Pathogenic
2	c.56A>C	p.D19A		Identified in a French ICP patient [106]	Increased autoactivation [106]	NA	Pathogenic
2	c.62A>C	p.D21A	1 (5 patients across 3 generations; all 3 tested patients carried the mutation) [107]	Also found in 1 patient with RAP [108] and 1 patient with early onset pancreatitis [98]	Increased activation [109]	NA	Pathogenic
2	c.65A>G	p.D22G		Identified in two patients of a FCP family [110]	Increased autoactivation [106]	NA	Pathogenic
2	c.68A>G	p.K23R		Reported in 12 CP patients with FCP, RAP or ICP [20, 85, 98, 108]	Increased autoactivation [106, 111]	NA	Pathogenic
2	c.63_71dup	p.K23_I24in sIDK	1 (3 patients across 2 generations; all 3 patients carried the variant) [112]		Increased activation [112]	NA	Pathogenic
2	c.86A>T	p.N29I	The second most frequent variant causing HCP [20]; in the first report, one family had 19 patients across 7 generations [113]	Also frequently reported in patients with ICP [20, 61, 114]	Increased activation and stability [65]	NA	Pathogenic
2	c.[86A>T;161A>G] (gene conversion)	p.[N29I;N54S]		Identified in a patient with ICP [115]	Increased autoactivation (solely due to p.N29I) [115]	NA	Pathogenic

2	c.86A>C	p.N29T	1 (8 patients across 3 generations; all patients were mutation carriers) [116]	Also reported in patients with FCP, ICP or RAP [20, 117, 118]	Increased activation and stability [65]	NA	Pathogenic
2	c.116T>C	p.V39A	1 (9 patients across 3 generations; all 7 genetically analyzed patients carried the mutation whilst all 4 genetically analyzed unaffected members did not carry the mutation) [59]		Increased stability [65]	NA	Pathogenic
3	c.235G>A	p.E79K		Identified in a total of 17 patients with ICP, FCP or ACP [20], the first three reports being [60, 119, 120]	Increased transactivation of PRSS2 [60]; there is growing evidence that increased expression of PRSS2 is an independent mechanism underlying CP [52]	0.00003579 (0.0003076, African/African American)	Pathogenic
3	c.364C>T	p.R122C		Identified in cases with ICP or FCP worldwide [20, 121-123]	Increased autoactivation and stability [65, 122]	0.00001988 (0.00003517, European (non-Finnish))	Pathogenic
3	c.365G>A	p.R122H	The most frequent variant causing HCP [20]; in the discovery report, one family had 20 patients across 4 generations [6]	Also frequently reported in ICP patients [20, 114, 118]	Increased autoactivation and stability [65, 124, 125]	0.00001062 (0.00002327, European (non-Finnish))	Pathogenic
3	c.365_366GC>AT (gene conversion)	p.R122H	1 (4 patients across 4 generations; the two genetically analyzed patients carried the mutation) [126]	Identified in a Belgian patient with ICP [127]	Increased autoactivation and stability [65, 124, 125]	NA	Pathogenic
3	c.[343T>A;347G>C;365_366delinsAT] (gene conversion)	p.[S115T;R116P;R122H]		Identified in a 20-year-old German male with RAP; <i>de novo</i> occurrence in a 7-year-old Polish girl with CP [128]	A combination of increased trypsinogen activation (attributable to p.R122H) and secretion	NA	Pathogenic

					(attributable to p.R116P) [128]		
4	c.568G>A	p.E190K		Identified in an 11-year-old girl with ICP [129]	Increased autoactivation [129]	NA	Pathogenic
<b>GoP</b>							
3	c.276G>T	p.K92N		Identified in a Caucasian ICP patient [119] and a Chinese AIP patient [30]	Moderate secretion defect [130]	NA	Predisposing
3	c.298G>C	p.D100H		Identified in 1/109 [96] and 1/351 [131] patients with ICP; co-inherited with a <i>CTRC</i> -deleting complex rearrangement in a subject with diabetes and identified alone in two clinically unaffected family members [132]	Severe secretion defect [130]	NA	Pathogenic
3	c.311T>C	p.L104P	2 (both having 3 patients across 3 generations) [133, 134];	Identified in two ICP patients [20] and two FCP families [135]	Severe secretion defect and elevation of ER stress marker [136]	NA	Pathogenic
3	c.346C>T	p.R116C	2 (3 patients across 2 generations [137]; 3 patients across 3 generations [138])	Also reported in nearly 40 patients with FCP or ICP [20, 96]	Severe secretion defect and elevation of ER stress marker [138]	0.00007072 (0.0007018, East Asian)	Pathogenic
3	c.371C>T	p.S124F		Identified in 1 of 660 German CP patients [118]	Moderate secretion effect [130]	0.000003977 (0.00005437, East Asian)	Predisposing
3	c.380C>G	p.S127C		Identified in an ICP patient and his unaffected mother [139]	Severe secretion defect and elevation of ER stress marker [139]	NA	Pathogenic
3	c.415T>A	p.C139S		Identified in 13 CP carriers [20], the first three reports being [87, 91, 140]	Severe secretion defect [138]	NA	Pathogenic
3	c.416G>T	p.C139F		Identified in 4 patients with ICP or RAP [99, 133, 141]	Severe secretion defect [130]	NA	Pathogenic
4	c.508A>G	p.K170E		Identified in 1 patient with CP [142] and 2 patients	Moderate secretion effect [130]	NA	Predisposing

				with tropical calcific pancreatitis [80]			
5	c.623G>C	p.G208A		148 CP carriers reported [20], the first 3 reports being [87, 143, 144]. Based upon data from ref. [61], the allele-based OR of p.G208A for ICP was 4.72 (95% CI 2.88-7.72, $p = 9.2 \times 10^{-11}$ ) [62]	Moderate secretion defect [130]	0.0007141 (0.009873, East Asian)	Predisposing
<b><i>No effect or loss-of-function</i></b>							
2	c.107C>G	p.P36R		Identified in two patients with ICP [119, 130]	Loss-of-function (degradation by CTRC) [130]	0.00009908 (0.001353, East Asian)	Benign
3	c.241C>A	p.L81M		Not segregated with CP in a Chinese AIP family (i.e., the variant was identified in the index patient with CP (12 y, female), her grandmother with CP and her healthy aunt but not in her grandfather with CP) [145]	Biochemical analysis of recombined trypsinogen expressed in <i>E. coli</i> did not find differences in autoactivation or trypsin activity between the mutant and wild-type molecules [145]. Cleavage at Leu81 by CTRC is required for CTRC-dependent degradation of PRSS1 [65, 146]; methionine is one of the conservative substitutions for leucine [67] and is one of the preferential cleavage sites of CTRC [147]; and p.L81M mutant was cleaved by CTRC as efficiently as wild-type [148]	NA	Benign
3	c.248G>A	p.G83E		Identified in 1 patient with ICP [119]	Loss-of-function (degradation by CTRC) [130]	NA	Benign

3	c.263T>A	p.I88N		Identified in 1 patient with CP [87]	Loss-of-function (degradation by CTTC) [130]	0.000007953 (0.00004619, European (Finnish))	Benign
3	c.292C>A	p.Q98K		Identified in 1 patient with CP [142]	Functionally neutral [130]	0.0001494 (0.0005880, Ashkenazi Jewish)	Benign
3	c.361G>A	p.A121T		15 CP carriers and 6 non-CP carriers reported [20], the first 3 reports being [91, 149, 150]	Functionally neutral by biochemical analysis; and no secretion defect [151]	0.00001995 (0.00006172, African/African American)	Benign
3	c.367G>A	p.V123M		Identified in 1 patient with ICP [119] and five non-CP subjects (1 unaffected control and four cancer patients) [20, 152, 153]	Loss-of-function (degradation by CTTC) [130]	0.00003183 (0.0001003, East Asian)	Benign
3	c.410C>T	p.T137M		Reported in a total of 12 CP carriers and 15 non-CP carriers [20], the first three reports being [87, 93, 140]	Functionally neutral [130]	0.0006792 (0.009425, East Asian)	Benign
4	c.541A>G	p.S181G		Identified in 6-year-old Italian boy with RAP; the patient also carried <i>CFTR</i> p.Phe508del; the two variants were present in the clinically normal mother [154]	Functionally neutral [130]	0.00006362 (0.0002613, South Asian)	Benign

<sup>a</sup>Data from some original reports were reinterpreted according to our working definitions of HCP, FCP and ICP [17, 26].

<sup>b</sup>Most of these data were taken from Masson et al. [10]. Segregation data were additionally provided for variants reported in single HCP families.

<sup>c</sup>For variants reported in >3 unrelated studies, only the first three publications or the first publication and two other selected publications were cited along with the CP Database [20].

<sup>d</sup>In accordance with gnomAD v2.1.1 [35].



**Table 6.** Classification of *PRSSI* missense variants without supporting functional data

Exon	Variant		Clinical genetic data	gpAF (hspAF) <sup>a</sup>	Classification
	c.nomenclature (NM_002769.5)	Amino acid change			
2	c.97A>G	p.N33D	Identified in 1 patient (African origin) with idiopathic pancreatitis <sup>b</sup> [11]	NA	Unknown significance
2	c.116T>A	p.V39E	Identified in 1 patient with RAP [155]	NA	Likely pathogenic
2	c.116T>G <sup>c</sup>	p.V39G	Identified in a pediatric soft tissue sarcoma survivor [156]	NA	Likely pathogenic
2	c.125A>G	p.N42S	Identified in 1 patient with RAP [155]	NA	Unknown significance
2	c.200C>T	p.S67F	Reported by a study of 10,389 cases from 33 cancer types [153]	0.00001593 (0.00002892, Latino/Admixed American)	Unknown significance
3	c.293A>G	p.Q98R	Identified in 1 patient with pancreatitis [98]	0.000003976 (0.000008790, European (non-Finnish))	Likely benign
3	c.296A>G	p.Y99C	Identified in a patient with pancreatic ductal adenocarcinoma [157]	0.000007953 (0.00001758, European (non-Finnish))	Unknown significance
3	c.303G>C	p.R101S	Identified in 1 patient (Caucasian origin) with idiopathic pancreatitis <sup>b</sup> [11]	NA	Unknown significance
3	c.310C>G	p.L104V	Identified in two patients and two healthy members of a family with solid pseudopapillary tumors [158]	NA	Unknown significance
3	c.364C>G	p.R122G	Identified in 1 health control [152]	0.00003193 (0.00006498, European (non-Finnish))	Likely pathogenic
3	c.367G>T	p.V123L	Found in 1/1000 German subjects without any pancreatic disease [130] and 1 patient with pancreatic cancer [152]	0.00003536 (0.00006970, European (non-Finnish))	Likely benign
3	c.403A>G	p.T135A	Found in a Chinese patient with pancreatic cancer who also carried c.410C>T (p.Thr137Met; see Table 5); whether the two variants are in <i>cis</i> or in <i>trans</i> remains unknown [93]	NA	Unknown significance
3	c.443C>T	p.A148V	Identified in a patient with benign pancreatic hyperenzymemia [86]	0.0003605 (0.002564, African/African American)	Unknown significance
4	c.487G>A	p.A163T	Identified in 1 ICP patient [99]	0.00004242 (0.0002257, Latino/Admixed American)	Unknown significance
4	c.544A>T	p.N182Y	Identified in 1 of 1061 Chinese patients with ICP [61]	NA	Unknown significance
4	c.557T>C	p.V186A	Identified in 1 patient (Ashkenaze origin) with idiopathic pancreatitis <sup>b</sup> [11]	NA	Unknown significance

5	c.689C>T	p.T230I	Identified in a patient with idiopathic pancreatitis <sup>b</sup> [11]	NA	Unknown significance
5	c.721A>G	p.N241D	Identified in 1 patient (North Africa origin) with CP <sup>b</sup> [11]	0.000003981 (0.000008799, European (non-Finnish))	Unknown significance

<sup>a</sup>In accordance with gnomAD v2.1.1 [35].

<sup>b</sup>Thierry Bienvenu, personal communication.

<sup>c</sup>Converted from chr7(hg19):142458481T>G (refer to Supplementary Table S2 in the original report [156]).

Journal Pre-proof