



**HAL**  
open science

## Removal of heavy metal ions from aqueous solutions by a local dairy sludge as a biosorbant

M. Sassi, B. Bestani, A. Hadj Said, N. Benderdouche, Guibal Eric

### ► To cite this version:

M. Sassi, B. Bestani, A. Hadj Said, N. Benderdouche, Guibal Eric. Removal of heavy metal ions from aqueous solutions by a local dairy sludge as a biosorbant. *Desalination*, 2010, 262 (1-3), pp.243-250. 10.1016/j.desal.2010.06.022 . hal-04184220

**HAL Id: hal-04184220**

**<https://hal.science/hal-04184220v1>**

Submitted on 31 Oct 2024

**HAL** is a multi-disciplinary open access archive for the deposit and dissemination of scientific research documents, whether they are published or not. The documents may come from teaching and research institutions in France or abroad, or from public or private research centers.

L'archive ouverte pluridisciplinaire **HAL**, est destinée au dépôt et à la diffusion de documents scientifiques de niveau recherche, publiés ou non, émanant des établissements d'enseignement et de recherche français ou étrangers, des laboratoires publics ou privés.

# Removal of heavy metal ions from aqueous solutions by a local dairy sludge as a biosorbant

M. Sassi <sup>a</sup>, B. Bestani <sup>b,\*</sup>, A. Hadj Said <sup>a</sup>, N. Benderdouche <sup>b</sup>, E. Guibal <sup>c</sup>

<sup>a</sup> Laboratoire de Recherche d'Agro Biotechnologie et de Nutrition en Zone Semi-aride, Université de Tiaret, Algérie

<sup>b</sup> Laboratoire de Structure, Elaboration et Application des matériaux moléculaires (SEA2M), Faculté des Sciences et de la technologie, Université de Mostaganem, Algérie

<sup>c</sup> Ecole des Mines d'Alès, Laboratoire Génie de l'Environnement Industriel, 6 avenue de Clavières, 30319 Alès CEDEX, France

## Abstract

In this work, the removal of lead and cadmium from an aqueous solution by a local dairy sludge was investigated in a batch system. Biosorption of these heavy metals was studied as a function of solution initial pH, equilibrium time, temperature, biosorbent dose, biosorbent particle diameter and initial metal ion concentration. Maximum sorption was observed at a pH value of 5 and a temperature of 40 °C. Equilibrium uptake increased with increasing metal ion concentration for both metals with a maximum sorption capacity of a 148.6 mg/g for Pb (II) and 66.7 mg/g for Cd(II). The Langmuir model was found to better describe the sorption of lead ions with a correlation factor of 0.99 while Freundlich and Temkin models were better for Cd(II) sorption. The temperature increase from 20 to 40 °C enhanced the uptake of Pb(II) by 20% and Cd(II) by 5%. The sorption kinetics were compatible with the pseudo-second order model for the systems investigated. SEM micrographs were determined before and after sorption. Nitric and hydrochloric acids were used for the metals desorption. Pb(II) was better desorbed by nitric acid whereas Cd(II) was eluted slightly better by chlorhydric acid.

### Keywords:

Heavy metals

Sorption

Dairy sludge

Isotherms

## 1. Introduction

Many industries produce significant amounts of heavy metal-laden wastewater, often discharged in the environment without any prior treatment, which may constitute a major source of pollution and health hazard. However, due to stringent legislation, heavy metal ion levels must be controlled before release into the environment [1] as they are classified as poisons since they accumulate in living species with a permanent toxic and carcinogenic effect. They are characterized by their persistence in the ecosystems, their non biodeterioration and their bioaccumulation along the food chain [2]. For these reasons, the presence of the heavy metal ions in the environment with concentrations not complying with pollution legislation is unacceptable and their removal from wastewater using different ways such as biosorption is increasingly attracting interest [3,4].

In many countries, dairy industries are often a large source of wastewater as they use activated sludge for their effluent treatment. The sludge formed during the aerobic biodegradation processes may lead to serious and costly disposal problems. This can be aggravated by the ability of sludge to adsorb specific organic compounds and even toxic heavy metals.

The use of the adsorbents able to trap micropollutants is an interesting starting step in order to decrease the degree of pollution [5–16]. Recently, a large number of works have studied the use of

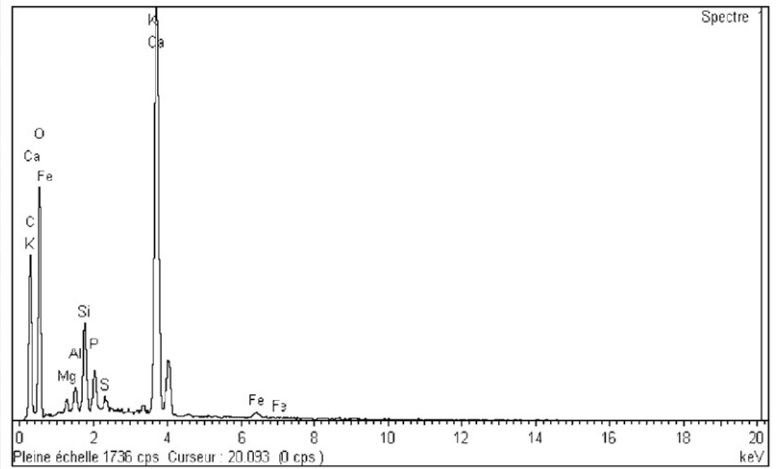
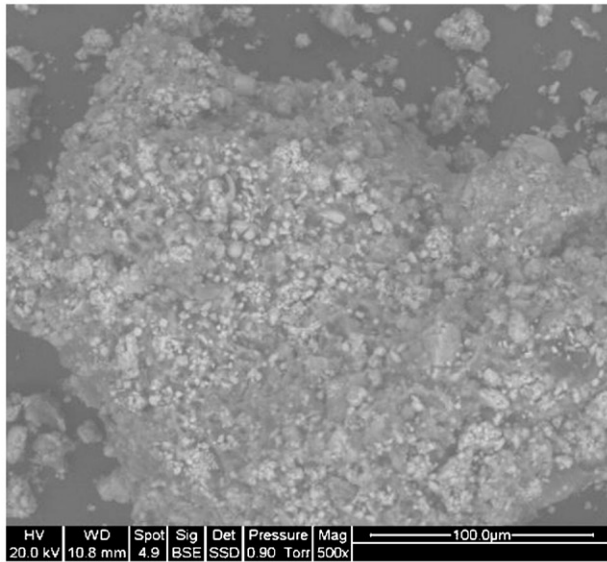
biosorbents (bacteria, algae and fungi, etc.) as an alternative or complementary sorbents to the existing standard adsorbents which are often expensive, ineffective and which generate great quantities of undesirable waste [17–21]. Living or dead microorganisms have been shown to be effective for the removal of the mineral micropollutants. However, alive cells are prone to the toxic effect of heavy metals and require also nutrients [22]. Hence, dead biomaterials can be more attractive [23] for metal removing applications. Activated sludges resulting from the stations of biological treatment can be good biosorbents of heavy metals because of their high content of microorganisms [24–27]. This work aimed at investigating the biosorption of Pb(II) and Cd(II) ions from aqueous solution by a local dairy sludge resulting from the water treatment processes [28–33]. The influence of pH, contact time, sorbent dose on biosorption were investigated. Experimental sorption isotherms were fitted to the Langmuir, Freundlich, and Temkin models. The pseudo first and second order models were used to study the sorption kinetics. Finally, acid desorption tests were performed.

## 2. Materials and methods

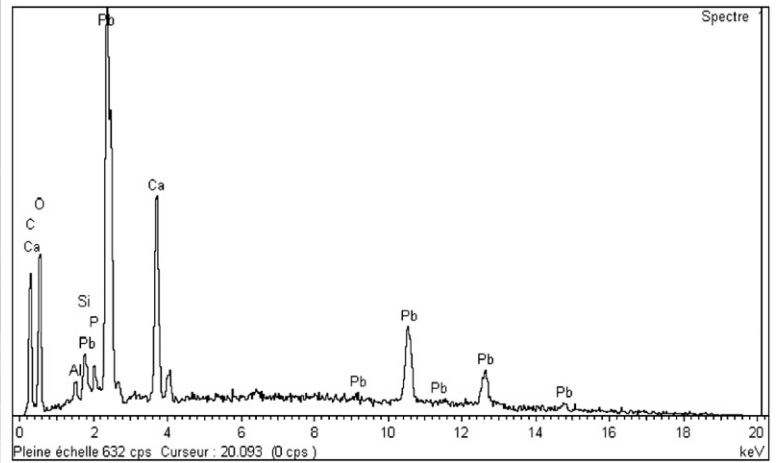
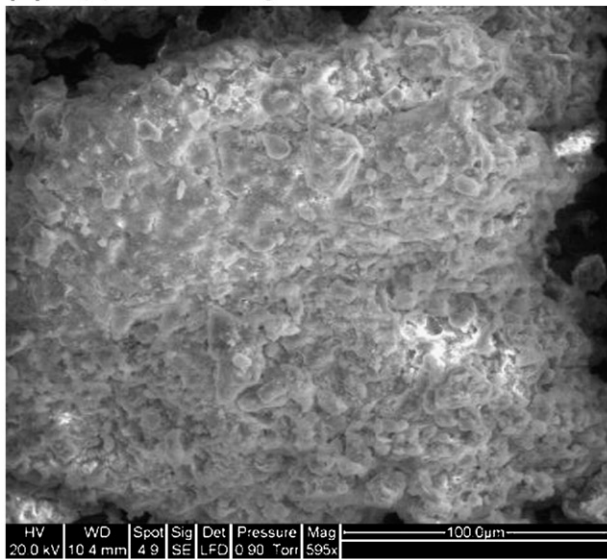
### 2.1. Preparation of metal ions stock solutions

Metal ions stock solutions were prepared from analytical grade PbCl<sub>2</sub> and CdCl<sub>2</sub>, H<sub>2</sub>O (Merck, Germany) and were further diluted as required with deionised water produced in the laboratory, then acidified at pH 5.

**(a) Unloaded sludge**



**(b) Pb(II) loaded sludge**



**(c) Cd loaded sludge**

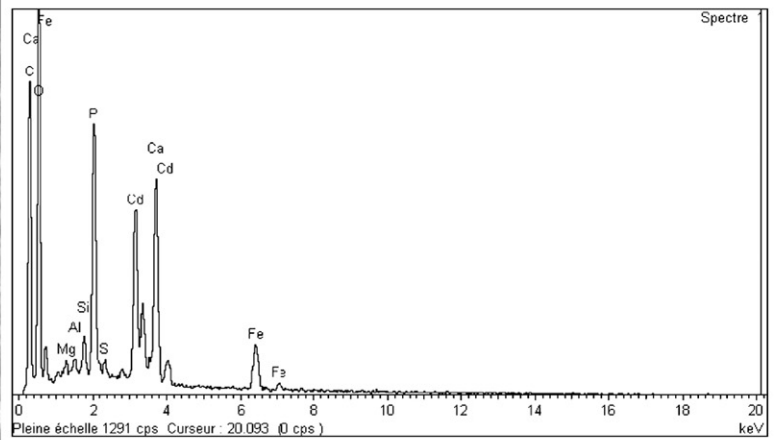
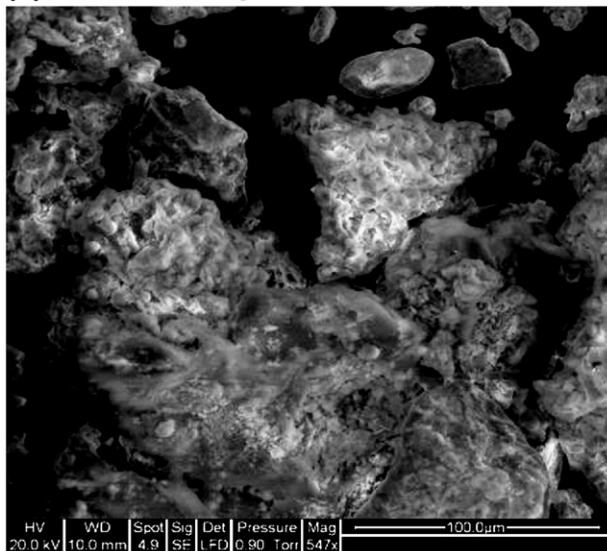


Fig. 1. Sludge SEM/EDX before and after lead and cadmium bio sorption: sludge (a), sludge-Pb (b) and sludge-Cd (c).

**Table 1**  
Chemical composition of the dairy sludge (SEM/DEX).

| Element | % Mass | % Atom |
|---------|--------|--------|
| C       | 32.19  | 45.17  |
| O       | 40.72  | 42.89  |
| Mg      | 0.42   | 0.29   |
| Al      | 0.64   | 0.40   |
| Si      | 2.22   | 1.33   |
| P       | 1.57   | 0.85   |
| S       | 0.45   | 0.24   |
| K       | 0.42   | 0.18   |
| Ca      | 19.76  | 8.31   |
| Fe      | 0.67   | 0.20   |
| Sn      | 0.94   | 0.13   |
| Total   | 100.00 |        |

## 2.2. Biosorbent characterizations

The sludge was collected from drying beds of a nearby dairy plant, dried overnight at 383 K, ground and sieved, and finally kept in desiccators before use.

The organic fraction was determined by sludge calcinations to constant weight. Microbiological characterization revealed the presence of bacteria, fungi, and algae. Scanning electronic microscopy (SEM) and X-ray spectrometry were used to characterize the biosorbent.

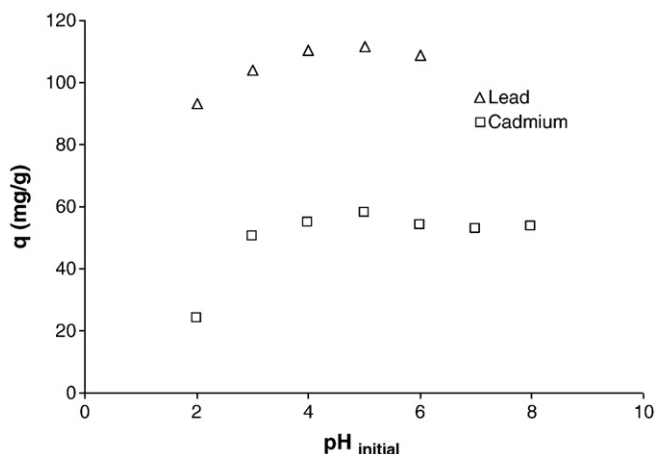
## 2.3. Experimental procedure

### 2.3.1. pH effect

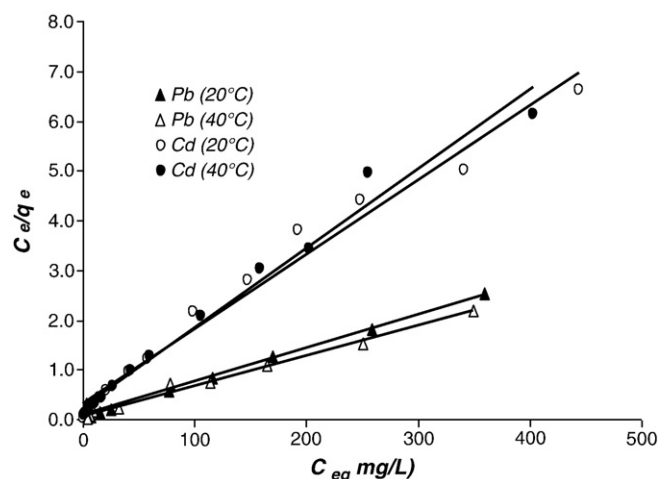
Initial pH was varied from a value of 2 to 6 by addition of concentrated hydrochloric acid or caustic soda as required to a suspension prepared by mixing 20 mg of biosorbent with 25 mL of solution of Pb(II) or Cd(II) (100 ppm). The resulting suspension was agitated magnetically for 48 h at 20 °C and the final pH value recorded.

### 2.3.2. Equilibrium isotherm models

For biosorption isotherms, a series of capped flasks containing 25 mL of metal ions solutions of known concentrations, varying from 10 to 500 mg/L were prepared. Identical amounts (20 mg) of sludge were added to the flasks and the resulting suspensions were agitated magnetically at 200 rpm and 20 °C for 48 h at a constant pH of 5. A 1.2 µm diameter filtration membrane was used to remove the biosorbent, and the filtrates were analysed by inductively coupled



**Fig. 2.** Initial pH effect on Pb (▲) and Cd (◆) removal conditions ( $C_i = 100$  mg/L, 20 °C, 200 rpm, particle size: 250–500 µm).



**Fig. 3.** Langmuir isotherms for Pb(II) and Cd(II) biosorption at (pH = 5; 20 and 40 °C).

plasma mass spectrometry (ICP-MS: 2000 spectrometer Jobin-Yvon, Longjumeau, France). The equilibrium adsorption capacity (or adsorption density),  $q_e$ , (mg/g) at different metal ions concentrations was determined using the following equation:

$$q_e = \frac{(C_0 - C_{eq})V}{1000m} \quad (1)$$

where  $C_0$  is the initial (adsorbate) solute concentration (mg/L),  $C_{eq}$  is the equilibrium adsorbate concentration (mg/L),  $V$  is the volume of the liquid phase (mL), and  $m$  is the mass of the adsorbent sample (mg).

Three frequently used single-component adsorption models were considered: Langmuir, Freundlich and Temkin [34] models. The Langmuir isotherm may be expressed in its linearised form as:

$$\frac{C_{eq}}{q_e} = \frac{1}{Kb} + \frac{1}{b}C_{eq} \quad (2)$$

The linear plot of  $C_{eq}/(q_e)$  versus  $C_{eq}$  yields the maximum adsorption capacity corresponding to complete monolayer coverage  $b$ (mg/g) and the Langmuir constant  $K$  (L/mg). The Freundlich model has been widely used to describe adsorption experiments. In this model, the uptake of metal ions occurs on a heterogeneous adsorbent surface. It is assumed that the stronger binding sites are occupied first and that the

**Table 2**

Langmuir, Freundlich and Temkin parameters for the biosorption of Pb(II) and Cd(II) by dairy sludge at pH 5.

| Metal ions     | Isotherm type                |                             |       |                               |      |       |        |                             |       |
|----------------|------------------------------|-----------------------------|-------|-------------------------------|------|-------|--------|-----------------------------|-------|
|                | Langmuir                     |                             |       | Freundlich                    |      |       | Temkin |                             |       |
|                | $b$<br>(mg g <sup>-1</sup> ) | $K$<br>(L g <sup>-1</sup> ) | $R^2$ | $k_f$<br>(L g <sup>-1</sup> ) | $n$  | $R^2$ | $B$    | $A$<br>(L g <sup>-1</sup> ) | $R^2$ |
| <b>Lead</b>    |                              |                             |       |                               |      |       |        |                             |       |
| 20 °C          | 148.5                        | 0.074                       | 0.992 | 21.9                          | 2.6  | 0.611 |        |                             |       |
| 40 °C          | 178.6                        | 0.030                       | 0.948 | 18.6                          | 2.16 | 0.406 |        |                             |       |
| <b>Cadmium</b> |                              |                             |       |                               |      |       |        |                             |       |
| 20 °C          | 66.7                         | 0.049                       | 0.980 | 16.2                          | 4.10 | 0.967 | 7.926  | 1.772                       | 0.967 |
| 40 °C          | 69.9                         | 0.050                       | 0.944 | 16.2                          | 3.97 | 0.893 | 8.086  | 1.699                       | 0.965 |

A quantitative chemical analysis was also performed at the "Service central d'analyse" at the National Centre for Scientific Research (CNRS), Solaize (France) after lead intake which revealed that level of calcium did not change after fixation and therefore ion exchange cannot account for the high sorption capacity as calcium is strongly linked to proteins as in caseins.

**Table 3**  
Maximum uptake  $b$  (mg/g) for some biosorbents taken from literature.

|                             | Pb(II) | Cd(II) | Ref.       |
|-----------------------------|--------|--------|------------|
| Activated sludge            | 131.6  | 84.30  | [28]       |
| Fungal biomass              | 47.40  | 35.90  | [17]       |
| Phanerochaete chrysosporium | 85.86  | 27.79  | [18]       |
| Algal biomass: Nostoc       | 93.46  | –      | [21]       |
| Ulva Lactuca                | 34.70  | 29.20  | [19]       |
| Grape stalk waste           | 49.88  | 27.87  | [10]       |
| Dairy sludge                | 148.6  | 66.70  | This study |

These relatively high sorption capacities cannot solely be explained by the small surface area found around  $1.2 \text{ m}^2/\text{g}$  but rather by the numerous and complex functional groups present on the sludge surface.

binding strength decreases with the increasing degree of site occupation. The linearised form of Freundlich equation is given by:

$$\log q_e = \log k_f + \frac{1}{n} \log C_e \quad (3)$$

where the parameters  $k_f$  and  $n$  can be obtained from the intercept and slope of the plot of  $\log q_e$  versus  $\log C_{eq}$ .

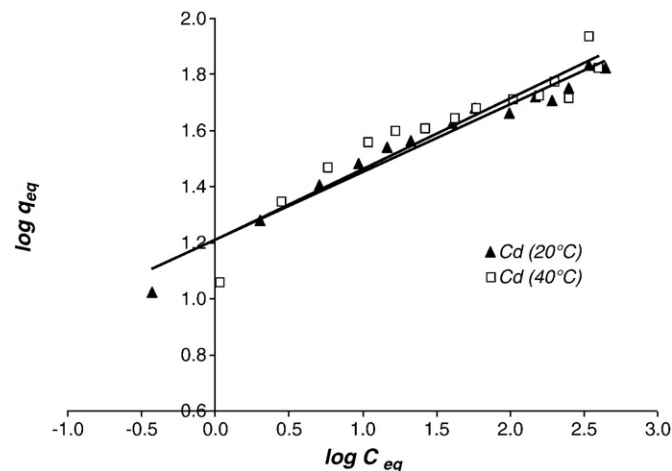
The Temkin isotherm assumes that the fall in the heat of sorption is linear rather than logarithmic, as implied in the Freundlich equation. The linearised Temkin isotherm model has generally been applied in the following form

$$q_e = B \ln A + B \ln C_e \quad (4)$$

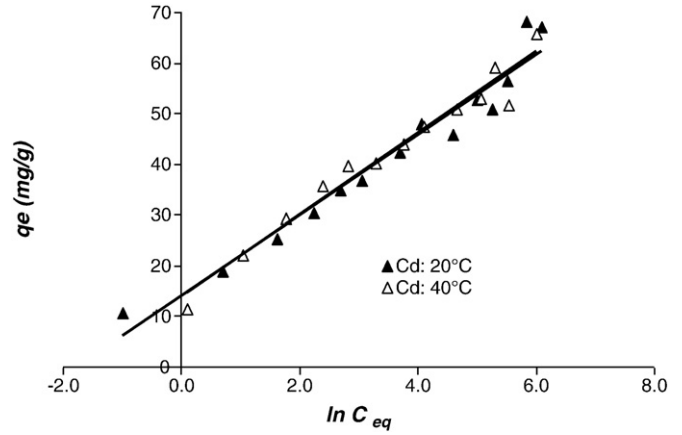
where,  $q_e$  ( $\text{mg g}^{-1}$ ) and  $C_e$  ( $\text{mg L}^{-1}$ ) are the amounts of adsorbed metal ion per unit weight of adsorbent and unadsorbed metal ion concentration in solution at equilibrium, respectively and  $B = (RT)/b$ .  $T$  the absolute temperature and  $R$  is the universal gas constant ( $8.314 \text{ J mol}^{-1} \text{ K}^{-1}$ ). The constant  $b$  is related to the heat of sorption. If a plot of  $q_e$  versus  $\ln C_e$  yields a linear line,  $A$  and  $B$  can be found.

### 2.3.3. Kinetic modeling

In order to examine the adsorption controlling mechanism, pseudo-first-order and pseudo-second-order kinetic models [35] were applied to experimental data of the studied metal ions. Kinetic experiments were conducted for different initial quantities ((0.5 g, 1.0 g and 2.0 g for Pb(II), and 1.0 g, 2.0 g and 4.0 g for Cd(II) respectively), and for particle diameters of  $80 \mu\text{m}$ ,  $125\text{--}250 \mu\text{m}$  and  $250\text{--}500 \mu\text{m}$ ) of sludge to which identical volumes of Pb(II) or Cd(II) solutions ( $100 \text{ g/L}$ ) were added in stirred flasks for 72 h at a speed of



**Fig. 4.** Freundlich isotherm for Cd(II) biosorption at (pH=5; 20 and 40 °C).



**Fig. 5.** Temkin isotherm for Cd(II) biosorption at (pH=5; 20 and 40 °C).

200 rpm, a pH of 5, and a temperature of 20 °C. Solution samples of 4 mL were withdrawn at regular intervals, filtered and the metal ions concentration measured. Similar tests were performed by varying the initial concentration of the metal ions (50, 100 and 200 mg/L) and the average particle diameter ( $<80$ ,  $125\text{--}250$  and  $250\text{--}500 \mu\text{m}$ ).

Effects of biosorbent dose, initial concentration and particle diameter on kinetics were also performed [36,37]. The pseudo first kinetic model for adsorption can be described by the following equation:

$$\log(q_e - q_t) = \log q_{e,1} - \frac{k_1}{2.303} t \quad (5)$$

where  $q_e$  and  $q_t$  ( $\text{mg g}^{-1}$ ) are the amount of adsorbed metal ion at equilibrium and at time  $t$  respectively and  $k_1$  ( $\text{min}^{-1}$ ) is the rate constant of first order adsorption. The applicability of this kinetic model is suggested by the straight line of  $\log(q_e - q_t)$  versus  $t$ . From the intercept and slope of the plot  $q_e$  and  $k_1$  can be determined respectively.

The pseudo second order can be described by:

$$\frac{t}{q_t} = \frac{1}{k_2 q_{e,2}^2} + \frac{1}{q_e} t \quad (6)$$

where  $q_t$  ( $\text{mg g}^{-1}$ ), is the amount of metal ion adsorbed at various times  $t$  ( $q_2$  and  $k_2$  are the maximum adsorption capacity ( $\text{mg g}^{-1}$ ) and

**Table 4**  
Kinetic parameters for the biosorption of Pb(II) and Cd(II) ions onto dairy sludge.

| Conditions                      | Lead (II)    |   |        | Cadmium (II) |   |        |
|---------------------------------|--------------|---|--------|--------------|---|--------|
|                                 | $q_e$ (mg/g) | $K_2 \cdot 10^{-3}$ ( $\text{g mg}^{-1} \text{ min}^{-1}$ ) | $R^2$  | $q_e$ (mg/g) | $K_2 \cdot 10^{-3}$ ( $\text{g mg}^{-1} \text{ min}^{-1}$ ) | $R^2$  |
| Initial conc. (mg/L)            |              |   |        |              |   |        |
| 50                              | 45.87        | 3.5   | 0.9968 | 21.5         | 6.0   | 0.9999 |
| 100                             | 88.50        | 0.49  | 0.9992 | 32.7         | 3.2   | 0.9999 |
| 200                             | 117.6        | 0.27  | 0.9985 | 39.1         | 3.22  | 0.9998 |
| Particle size ( $\mu\text{m}$ ) |              |   |        |              |   |        |
| 80                              | 76.90        | 1.2   | 0.999  | 5            | 5.0   | 0.9998 |
| 125–250                         | 88.50        | 0.5   | 0.9992 | 3.2          | 3.2   | 0.9999 |
| 250–500                         | 90.10        | 1.3   | 0.9996 | 1.5          | 1.5   | 0.9996 |
| Sludge dose (g/L)               |              |   |        |              |   |        |
| 0.5                             | 112.40       | 0.67  | 0.9994 |              |   |        |
| 1.0                             | 98.00        | 0.18  | 0.9888 | 44.4         | 4.2   | 0.9999 |
| 2.0                             | 43.10        | 16.5  | 0.9987 | 32.7         | 3.2   | 0.9999 |
| 4.0                             |              |   |        | 21.8         | 4.8   | 0.9977 |

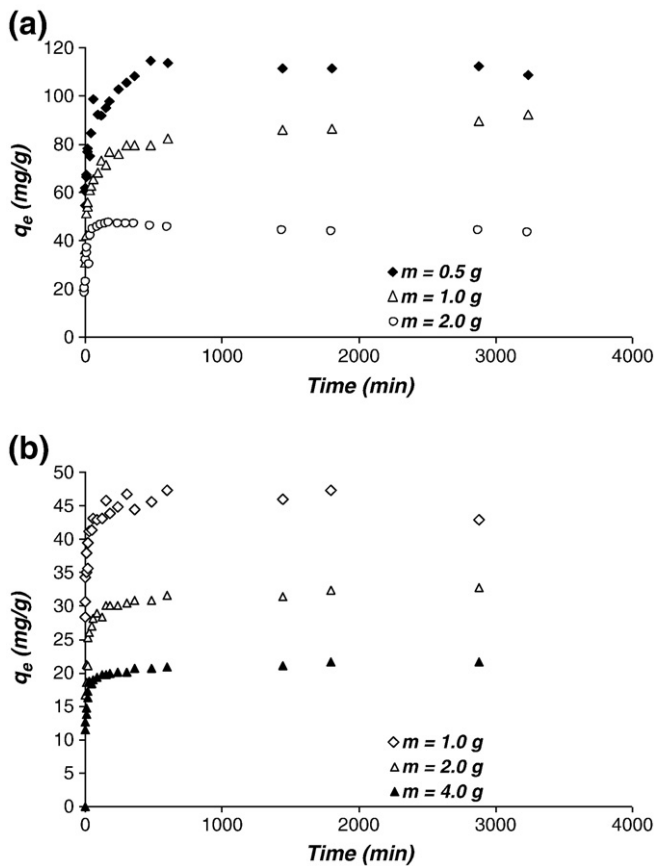


Fig. 6. Biosorption kinetics of Pb (a) and Cd (b) removals as a function of biosorbent dose.

the equilibrium constant rate for the pseudo-second-order adsorption ( $\text{g mg}^{-1} \text{min}^{-1}$ ), respectively.

### 2.3.4. Metal ions desorption

Several methods have been developed that can strip metal ions from solid surface to a certain extent. They are based on desorption of metal ions using acids, bases, inorganic salts or solvents [38]. The recovery of lead and cadmium has been the subject of some investigations [39,40]. In order to determine the recovery rate, samples containing metal ions used during adsorption experiments were treated by hydrochloric and nitric acids (HCl and  $\text{HNO}_3$ ) with various concentrations (0.1, 0.2 and 0.3 M). In each case, 20 mg of metal ion laden sludge were mixed with 25 mL of acid and agitated during 3 h at 20 °C for 200 rpm. The sample was centrifuged and the clear supernatant was filtered through a 1.2  $\mu\text{m}$  diameter membrane and analysed for metal ion contents.

## 3. Results and discussion

### 3.1. Characterizations of biosorbent

The analysis of the sludge gave a 65% of organic matter content and a presence of aerobic germs, total coliforms, staphylococcal, the streptococcus lactic ones, bacterial spores, yeasts and moulds, algae and protozoa. The sludge analysis by Scanning Electron Microscopy before and after metals uptake is shown in Fig. 1 (a, b, c). The micrographs show the appearance of grains on biosorbent after adsorption whereas they were absent before the biosorption. The SEM observed grains were also characterized by energy dispersive X-ray spectrometry: EDX. Fig. 1b and c shows the signals of Pb(II) and Cd(II) on the surface of biosorbent. Table 1 summarizes the chemical

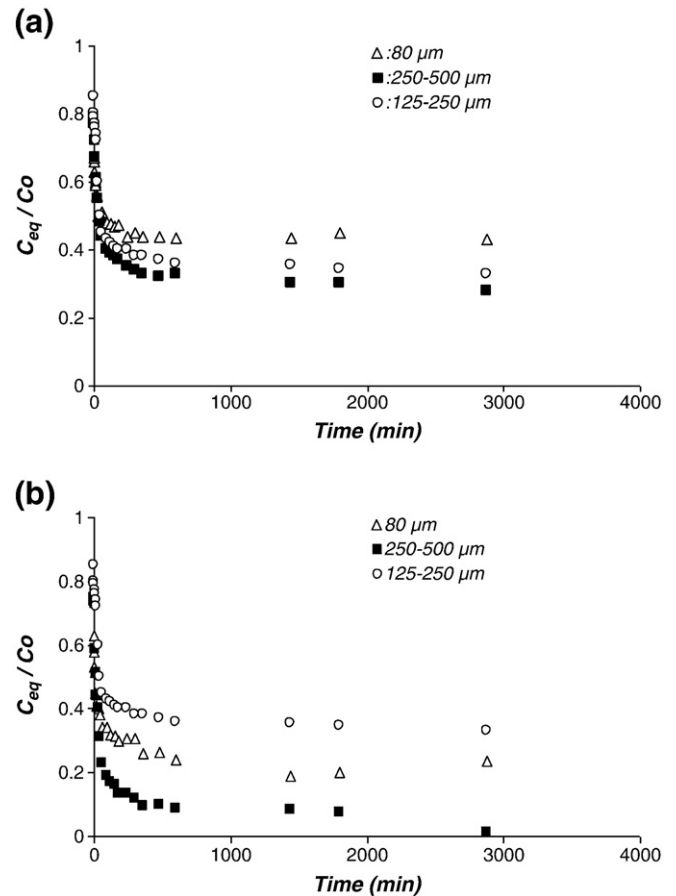


Fig. 7. Biosorption kinetics of Pb (a) and Cd (b) removals as a function of particles diameter.

composition of biosorbent used. Besides carbon and oxygen, high level of calcium was found in this sludge. The dairy wastewater is laden with lactoserum which is rich in calcium complexing proteins as in caseins, for instance.

### 3.2. pH effect

The effect of hydrogen ions concentration on biosorption of heavy metals has been the subject of many studies which showed the importance of this parameter on the solubility of the metal ions as well as on the ionization of the fixing sites [41]. In this work, pH was varied in order to determine its optimum value for maximum biosorption of lead and cadmium ions. As depicted in Fig. 2, the metal ions uptake ions was strongly affected by the pH of the medium as it increased with solution pH increase. The sharpest increase in maximum capacity ( $q_e$ ) was obtained between pH values of 2 and 5, corresponding for the latter pH value to capacities of 111.8 mg/g and 58.1 mg/g for lead and cadmium, respectively. To avoid metal precipitation biosorption tests were not conducted beyond this maximum value of pH [31].

At low pH values, the high concentration of  $\text{H}^+$  protons competes with and decreases the adsorption of positively charged metal ions [8,41] but an increase in the pH causes the ionization of the biosorbent surface functional groups and thus, increases the total negative charge which increases biosorption. The variation of the final pH as a function of the initial pH tests was also conducted. We found that the equilibrium pH stabilizes at around 5 for an initial pH of 5. The biosorbents would behave as buffers by modifying the pH of the medium [17].

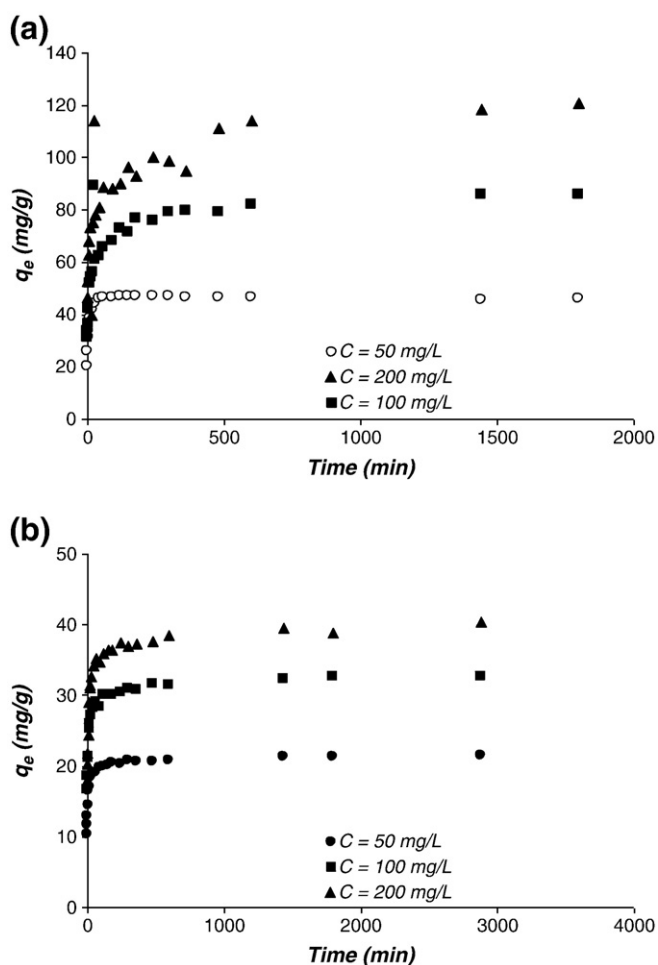


Fig. 8. Biosorption kinetics of Pb (a) and Cd (b) removals as a function of initial concentration.

### 3.3. Biosorption isotherms

The equilibrium adsorption isotherm which gives the capacity of the adsorbent at a fixed temperature is an important physicochemical quantity for evaluating an adsorption process. Three commonly used types of adsorption isotherms are considered here: Langmuir, Freundlich and Temkin adsorption isotherms [34].

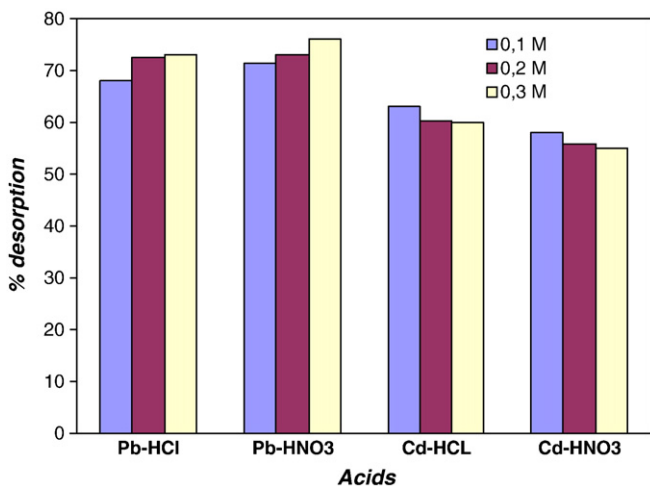


Fig. 9. Acid nature and concentration effects on Pb(II) and Cd(II) elution.

They correspond to the metal ions splitting between the liquid and solid phases at equilibrium. Fig. 3 shows the linear form of the Langmuir adsorption isotherm of Pb(II) and Cd(II) by dairy sludge at a pH of 5 and temperatures of 20 and 40 °C. Initially, the adsorption rate increases linearly with the increase in the concentration until equilibrium is reached corresponding to the maximum adsorption capacity for metal ions (saturation). The temperature increase to 40 °C enhanced the maximum capacity especially for Pb(II).  $Q_{max}$  at 40 °C is higher than at 20 °C (from 148.6 to 178.5 mg/g): It is an endothermic process as an increase in temperature would entail the appearance of new fixing sites leading to a higher  $Q_{max}$ . The values of the maximum capacity of adsorption  $b$  are shown in Table 2 compared with some values reported in literature for both metal uptakes, given in Table 3. The results obtained show a good correlation for the Langmuir model for both metals and a good affinity of this material for lead. The Freundlich model does not apply well, especially in the case of Pb at 40 °C at high concentrations (100 to 500 mg/l) as it is well known that it best fit slow concentration ranges. But at low concentrations it fitted well the experimental data with a determination coefficient  $R^2$  higher than 0.98. As shown in Figs. 3–5 the three proposed models best fit the cadmium removal at both considered temperatures.

### 3.4. Kinetic studies

Sorption equilibria investigation is important for the determination of the sorption efficiency but cannot explain the mechanisms involved that is the reason why kinetic studies are performed.

The fitting of the intraparticle model may give an insight as to what step controls the sorption process. For the three parameters studied (initial concentration, sludge dose, particle diameter). Three distinct parts can be identified on the kinetic curves: The first one corresponds to the external diffusion, the second phase which is longer to intraparticle diffusion and the equilibrium step to a plateau like behavior. When more than one step are present, intraparticle diffusion is not the sole limiting step. Sorption itself can be accounted for by several interactions between the metal ions and the sorbent due to the numerous and complex surface functional groups present on the sludge.

The kinetics of biosorption, representing the rate of adsorption of the biosorbate controlled by the residence time in the solid-liquid interface is the principal characteristic defining the sorption efficiency [42]. The biosorption kinetic parameters of lead and cadmium found from a linear form of the pseudo-second order model are given in Table 4. The best fit model was selected based on the correlation coefficient,  $R^2$  values (first order parameters are not shown as a figure since  $R^2$  values are low). The second order model includes the different phases of the sorption process (external diffusion, intraparticle diffusion and sorption itself) and also its applicability suggests that a chemical process might control the sorption process but the mechanisms involved are not identified. In this case, the pseudo second-order kinetic model mechanisms describe well the biosorption of lead and cadmium with correlation coefficients greater than 0.998 for all the studied cases.

#### 3.4.1. Effect of biosorbent dose

The sludge dose effect on Pb(II) and Cd(II) removal is shown in Fig. 6. The maximum uptake of the two metals was obtained at a sludge concentration of 0.5 g/L and 1.0 g/L respectively for Pb(II) and Cd(II). The increase of biomass dose decreases slightly the equilibrium time and prevents the metal ions from reaching the various sites of biosorption [27].

#### 3.4.2. Effect of particle diameter

The biosorbent contact surface area with metal ions solution is important for biosorption process. Fig. 7 shows the effect of particle size on the biosorption. The quantity of metal remaining in the

solution increases slightly with a decrease in particle diameter, particularly at equilibrium.

#### 3.4.3. Effect of initial concentration

The initial metal concentration constitutes a significant driving force allowing the metallic mass transfer between the aqueous and the solid phases [25]. The relationship between contact time and metal ion removal by the dairy sludge for three different initial concentrations is illustrated in Fig. 8 at a pH of 5 and for an adsorbent dose of 1 g/L and 2 g/L for Pb(II) and Cd(II), respectively. It can be seen from Fig. 9 that an increase in initial concentration results in an increase in the amount of metal removed. It can be concluded that the rate of binding with sludge is initially high, but it gradually decreases to reach equilibrium after a period of 500 min for both metal ions.

The result obtained for the biosorption kinetics of Pb(II) and Cd(II) onto the dairy sludge as a function of biosorbent dose, initial concentration and particle diameter are shown in Table 4. The various correlation coefficients being greater than 0.998 indicate that the pseudo-second order model best describes the metals ions biosorption and that a chemical biosorption process may be involved [43].

#### 3.5. Metal ions desorption

Desorption experiments of lead and cadmium ions with nitric and hydrochloric acids were carried out in duplicate and are shown in Fig. 9. It can be seen that lead is better eluted with HNO<sub>3</sub> (0.3 M) yielding a desorption rate of 76.6% whereas cadmium was better recovered with HCl (0.1 M) with 62.5 % recovery rate. The smaller elution of Cd<sup>++</sup> ions with respect to Pb<sup>++</sup> may be explained by its fixation in depth the sorbent due its smaller ionic diameter. In the literature, both ions are reported to be well eluted by both HNO<sub>3</sub> and HCl.

### 4. Conclusions

The capacity of a dairy sludge to remove Pb(II) and Cd(II) was investigated. The room temperature maximum uptakes obtained at a pH of 5 for Pb(II) and Cd(II) were 148.6 and 66.7 mg/g, respectively. The temperature increase from 20 °C to 40 °C enhanced the maximum capacity especially for Pb(II) from 148.6 to 178.5 mg/g. The experimental adsorption data for both metal ions fitted reasonably well the Langmuir model, while, the Freundlich and Temkin models described well the Cd(II) biosorption. The lower values of R<sup>2</sup> show that the biosorption of lead is not well described by the Freundlich isotherm especially at higher concentration (>100 mg/L).

The biosorption kinetics for the metal ions studied at different initial solutions concentrations, dairy sludge loadings and particle diameter were best described using pseudo-second order suggesting a chemical process for the mechanism of biosorption between the metal ions and the sorbent. The tests of desorption showed that up to 76.6% of Pb(II) were recovered by HNO<sub>3</sub> (0.3 M) and 62.5% of Cd(II) by HCl (0.1 M). This study shows that this dairy sludge as a solid waste can be used as an alternative to cleanse heavy metal laden industrial wastewater.

### References

- [1] L.K. Wang, H. Yung-Tse, H. Howard Lo, C. Yapijakis, Waste Treatment in the Food Processing Industry Taylor & Francis Group 6000, Florida, FL, 2006 chapter 1.
- [2] M. Sittling, Handbook of Toxic and Hazardous Chemicals, Noyes Publications, Park Ridge, New Jersey, 1981.
- [3] B. Volesky, Bio sorption and me, Water Research 41 (2007) 4017–4029.
- [4] M. Tsezos, Bio sorption of metals. The experience accumulated and the outlook for technology development, Hydrometallurgy 59 (2001) 241–243.
- [5] A. Malik, Metal bioremediation through growing cells, Environment International 30 (2004) 261–278.
- [6] C.K. Singh, J.N. Sahu, K.K. Mahalik, C.R. Mohanty, B. Raj Mohan, B.C. Meikap, Studies on the removal of Pb(II) from wastewater by activated carbon developed from *Tamarind wood* activated with sulphuric acid, Journal of Hazardous Materials 153 (2008) 221–228.
- [7] D. Zhou, L. Zhang, G. Shenglian, Mechanisms of lead biosorption on cellulose/chitin beads, Water Research 39 (2005) 3755–3762.
- [8] G. Gilles, V.H. Eric, B. François, Lead and cadmium biosorption by extracellular polymeric substances (EPS) extracted from activated sludge: pH-sorption edge tests and mathematical equilibrium modelling, Chemosphere 64 (2006) 1955–1962.
- [9] N. Fiol, I. Villaescusa, M. Martinez, N. Miralles, J. Poch, J. Serarols, Sorption of Pb(II), Ni(II), Cu(II) and Cd(II) from aqueous solution by olive stone waste, Separation and Purification Technology 50 (2006) 132–140.
- [10] M. Martinez, N. Miralles, S. Hidalgo, N. Fiol, I. Villaescusa, J. Poch, Removal of lead (II) and cadmium(II) from aqueous solutions using grape stalk waste, Journal of Hazardous Materials B133 (2006) 203–211.
- [11] S. Luo, L. Yuan, L. Chai, X. Min, Y. Wang, Y. Fang, P. Wang, Biosorption behaviors of Cu<sup>2+</sup>, Zn<sup>2+</sup>, Cd<sup>2+</sup> and mixture by waste activated sludge, Transactions of Nonferrous Metals Society of China 16 (2006) 143 1–1435.
- [12] J. Yu, M. Tong, X. Sun, B. Li, Biomass grafted with polyamic acid for enhancement of cadmium(II) and lead(II) biosorption, Reactive & Functional polymers 67 (2007) 564–572.
- [13] T. Fan, et al., Biosorption of cadmium(II), zinc(II) and lead(II) by *Penicillium simplicissimum*: Isotherms, kinetics and thermodynamics, Journal of Hazardous Materials (2008).
- [14] V. Singh, Removal of lead from aqueous solutions using *Cassia grandis* seed gum-graft-poly(methylmethacrylate), Journal of Colloid and Interface Science 316 (2007) 224–232.
- [15] R. Ayyappan, A. Carmalin Sophia, K. Swaminathan, S. Sandhya, Removal of Pb (II) from aqueous solution using carbon derived from agricultural wastes, Process Biochemistry 40 (2005) 1293–1299.
- [16] X.S. Wang, Z.Z. Li, C. Sunb, Removal of Cr(VI) from aqueous solutions by low-cost biosorbents: marine macroalgae and agricultural by-products, Journal of Hazardous Materials 153 (2008) 1176–1184.
- [17] Lenka Svecova, Marketa Spanelova, Martin Kubal, Eric Guibal, Cadmium, lead and mercury biosorption on waste fungal biomass issued from fermentation industry. I. Equilibrium studies, Separation and purification Technology 52 (2006) 142–153.
- [18] S. Ridvan, Adil Denizli, M. Yakup Arica, Biosorption of cadmium(II), lead(II) and copper(II) with the filamentous fungus *Phanerochaete chrysosporium*, Bioresource Technology 76 (2001) 67–70.
- [19] A. Sari, M. Tuzen, Biosorption of Pb(II) and Cd(II) from aqueous solution using green alga (*Ulva lactuca*) biomass, Journal of Hazardous Materials 152 (2008) 302–308.
- [20] Ayselgul Seker, Talal Shahwan, Ahmet E. Eroglu, Sinan Yilmaz, Zeliha Demirel, Meltem Conk, Dalay, Equilibrium, thermodynamic and kinetic studies for the biosorption of aqueous lead(II), cadmium(II) and nickel(II) ions on *Spirulina platensis*, Journal of Hazardous Materials 154 (2008) 973–980.
- [21] V.K. Gupta, A. Rastogi, Biosorption of lead from aqueous solutions by green algae *Spirogyra* species: kinetics and equilibrium studies, Journal of Hazardous Materials 152 (2008) 407–414.
- [22] V.K. Gupta, A. Rastogi, Biosorption of lead(II) from aqueous solutions by non-living algal biomass *Oedogonium* sp. and *Nostoc* sp. – a comparative study, Colloids and Surfaces, B: Biointerfaces 64 (2008) 170–178.
- [23] Z. Al-Qodah, Bio sorption of heavy metal ions from aqueous solutions by activated sludge, Desalination 196 (2006) 164–176.
- [24] Mehmet Kılıç, Mustafa Erol Keskin, Süleyman Mazlum, Nazire Mazlum, Hg(II) and Pb(II) adsorption on activated sludge biomass: effective biosorption mechanism, International Journal of Mineral Processing 87 (2008) 1–8.
- [25] W. Xuejiang, et al., Technical note, Bio sorption of Cu(II) and Pb(II) from aqueous solutions by dried activated sludge, Minerals Engineering 19 (2006) 968–971.
- [26] Z. Aksu, D. Akpınar, Modelling of simultaneous bio sorption of phenol and nickel (II) onto dried aerobic activated sludge, Separation and Purification Technology 21 (2000) 87–99.
- [27] Osman Gulnaz, Saadat Saygideger, Erdal Kusvuran, Study of Cu(II) biosorption by dried activated sludge: effect of physico-chemical environment and kinetics study, Journal of Hazardous Materials B120 (2005) 193–200.
- [28] W. Xue-jiang, et al., Bio sorption of cadmium(II) and lead(II) ions from aqueous solutions onto dried activated sludge, Journal of Environmental Sciences 18 (5) (2006) 840–844.
- [29] A. Hammami, F. González, A. Ballester, M.L. Blázquez, J.A. Muñoz, Bio sorption of heavy metals by activated sludge and their desorption characteristics, Journal of Environmental Management 84 (2007) 419–426.
- [30] T. Emre, Y. Ulku, Pb(II) bio sorption using anaerobically digested sludge, Journal of Hazardous Materials B 137 (2006) 1674–1680.
- [31] M. Kiliç, et al., Hg(II) and Pb(II) adsorption on activated sludge biomass: effective biosorption mechanism, International Journal of Mineral Processing 87 (2008) 1–8.
- [32] S. Sirianuntapiboon, O. Ungkprasatcha, Removal of Pb<sup>2+</sup> and Ni<sup>2+</sup> by bio-sludge in sequencing batch reactor (SBR) and granular activated carbon-SBR (GAC-SBR) systems, Bioresource Technology 98 (14) (2007) 2749–2757.
- [33] G. Naja, C. Mustin, J. Berthelin, B. Volesky, Lead biosorption study with *Rhizopus arrhizus* using a metal-based titration technique, Journal of Colloid and Interface Science 292 (2005) 537–543.
- [34] D.O. Cooney, Adsorption design for wastewater treatment, Lewis Publishers, Florida, FL, 1999.
- [35] Y.S. Ho, G. McKay, Kinetic models for the sorption of dye from aqueous solution by wood, Journal of Environmental Health Part B: Process Safety Environmental Protection 76 (B2) (1998) 183–191.
- [36] M.Y. Arica, Y. Kacar, O. Genc, Entrapment of white-fungus *Trametes versicolor* in Ca-alginate beads: preparation and biosorption kinetic analysis for cadmium removal from an aqueous solution, Bioresource Technology 80 (2001) 121–129.



- [37] Y.S. Ho, G. McKay, Pseudo-second order model for sorption processes, *Process Biochemistry* 34 (1999) 451–465.
- [38] B. Roop, G. Meenaski, Activated carbon adsorption, CRC PressTaylor & Francis Group, NW, FL, 2005 chapter 5.
- [39] L. Deng, et al., Sorption and desorption of lead (II) from wastewater by green algae *Cladophora fascicularis*, *Journal of Hazardous Materials* 143 (2007) 220–225.
- [40] P. Lodeiro, R. Herrero, M.E. Sastre de Vicente, Batch desorption studies and multiple sorption–regeneration cycles in a fixed-bed column for Cd(II) elimination by protonated *Sargassum muticum*, *Journal of Hazardous Materials* B137 (2006) 1649–1655.
- [41] Vítor J.P. Vilar, Cidália M.S. Botelho, Rui A.R. Boaventura, Influence of pH, ionic strength and temperature on lead biosorption by *Gelidium* and agar extraction algal waste, *Process Biochemistry* 40 (2005) 3267–3275.
- [42] Claudio C.V. Cruz, Antonio Carlos A. da Costa, Cristiane Assumpção Henriques, Aderval S. Luna, Kinetics modelling and equilibrium studies during cadmium biosorption by dead *Sargassum* sp. biomass, *Bioresource Technology* 91 (3) (2004) 249–257.
- [43] B. Cordero, P. Lodeiro, R. Herrero, M.E. Sastre de Vicente, Biosorption of cadmium by *Fucus spiralis*, *Environmental Chemistry* 1 (2004) 180–187.